

**Clare Rojas**

**Chinatown Subway Mural**



34'-10"





The tiles will be chosen based on a wide spectrum of colors and tone, organized at random with neutral and white tones placed evenly throughout.



Swatches will be sourced from art and design institutions, individual designers, and fabric stores. Details from each swatch will be identified and cropped to diamond frame.



**Asian Art Museum**  
 Contact: Cathy Mano  
 Permission pending  
 Awaiting hi-res images \$

**MET / ArtRes**  
 Contact: Kerry Gaertner  
 Permission pending  
 Awaiting hi-res \$

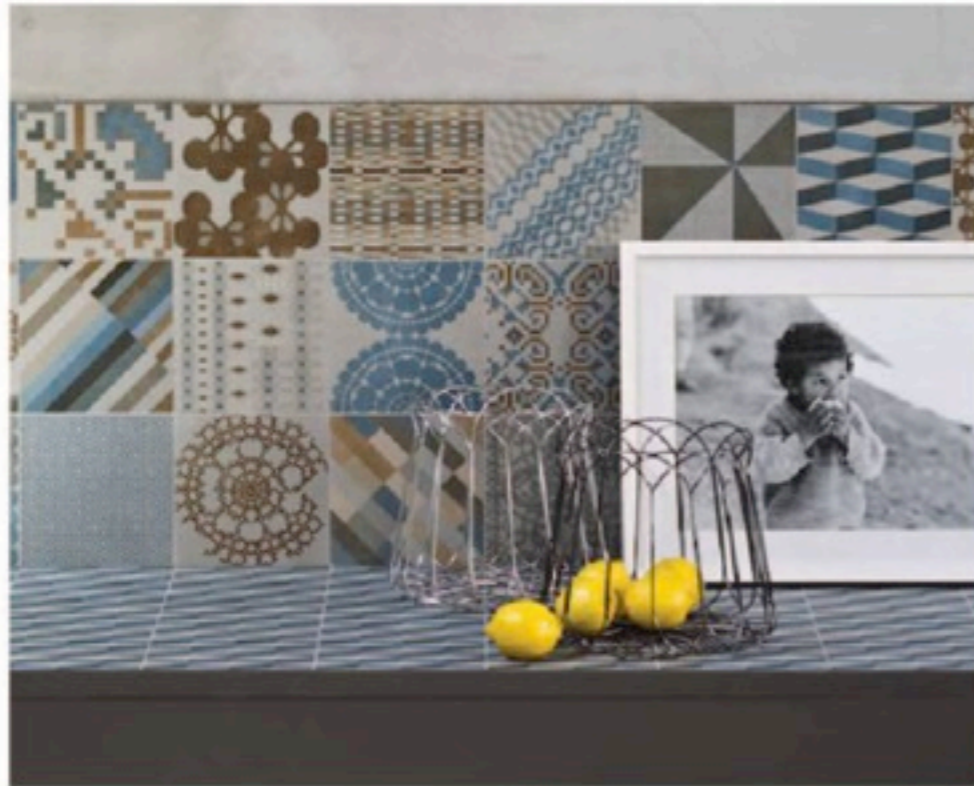
**RISD Museum**  
 Contact: Sionan Guenther  
 Approved

Florence Broadhurst  
 Awaiting response

Vivienne Tam  
 Awaiting response

**W&Q Design**  
 Siwen Huang  
 Qiongjie Yu  
 Awaiting response

**Peter Som Design**  
 Awaiting response



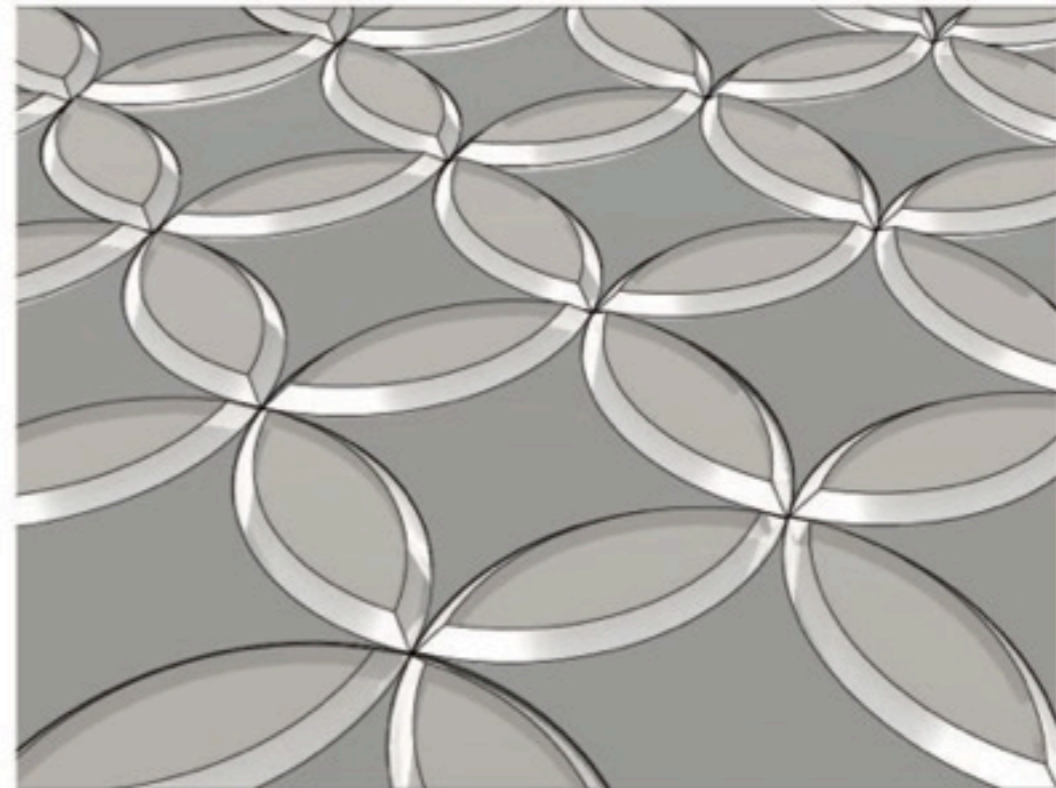
Digitally printed tiles are fabricated using high-resolution images, matching the original color and details with precision.



This process is incredibly durable and has been tested in outdoor environments, as well as in areas with high foot traffic.



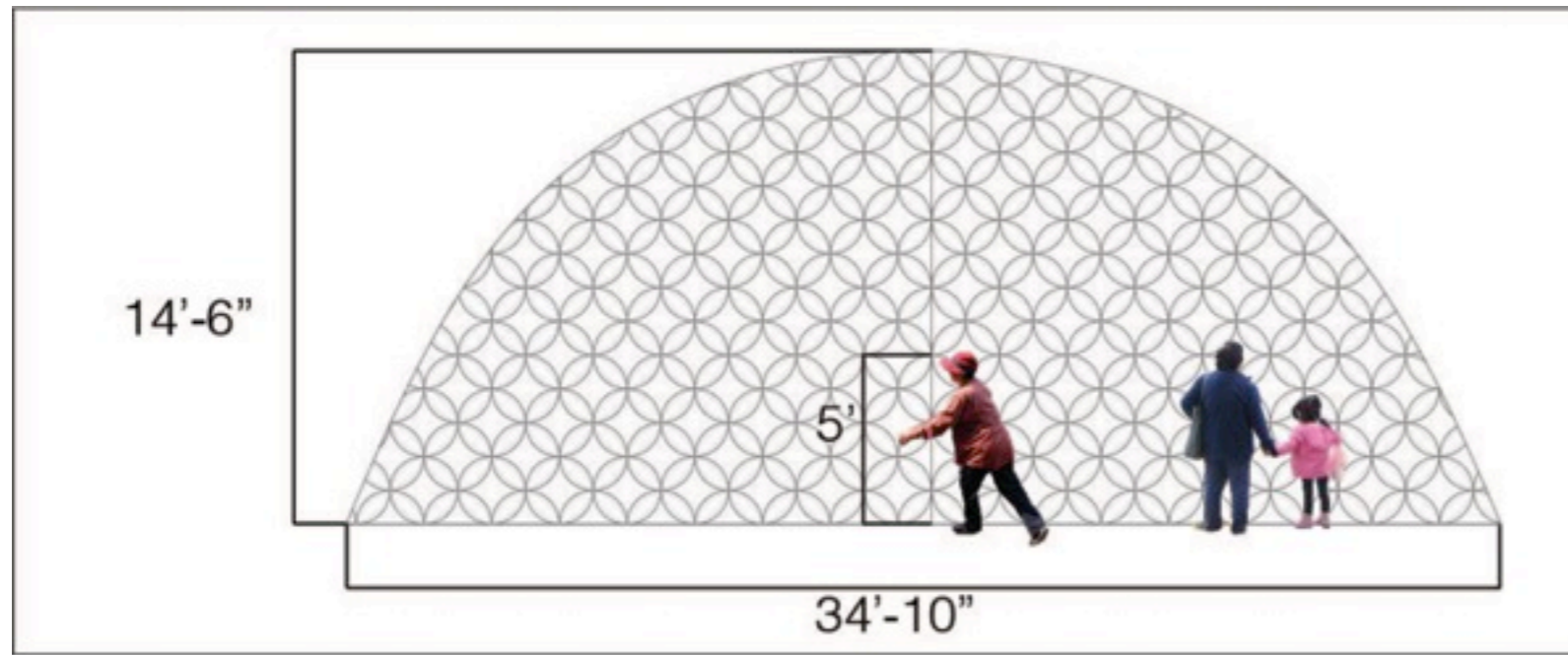
Ideally our tiles will be digitally printed and lasercut into form.



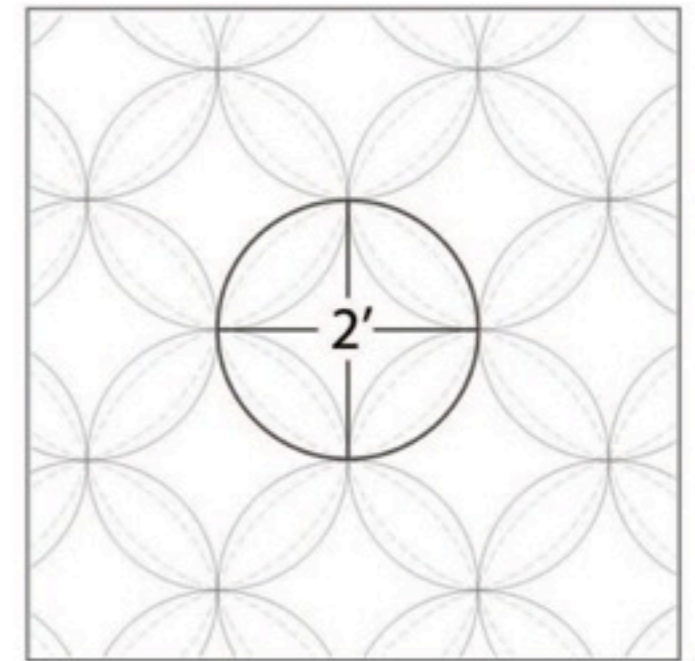
Tiles will be lasercut into the two components of a cathedral quilt pattern: the diamond and the elliptic form. The diamond tile will appear embedded within a circle and the surrounding elliptic forms will be raised with a beveled edge, adding a tactile element to the mural.







The mural reaches 14.5 feet tall and spans just over 34 feet wide. Subway commuters will take in their initial view from 10-15 feet away. The scale of each cathedral quilt pattern component is 2 feet in diameter. At this scale, the textile swatches are readable at a 15-foot distance, while allowing further visual discovery upon closer investigation.



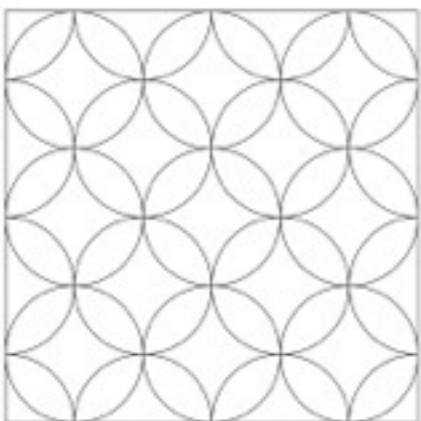
Each circular component is 2 feet in diameter. The mural contains approximately 200 components taken from 75-100 textile swatches.



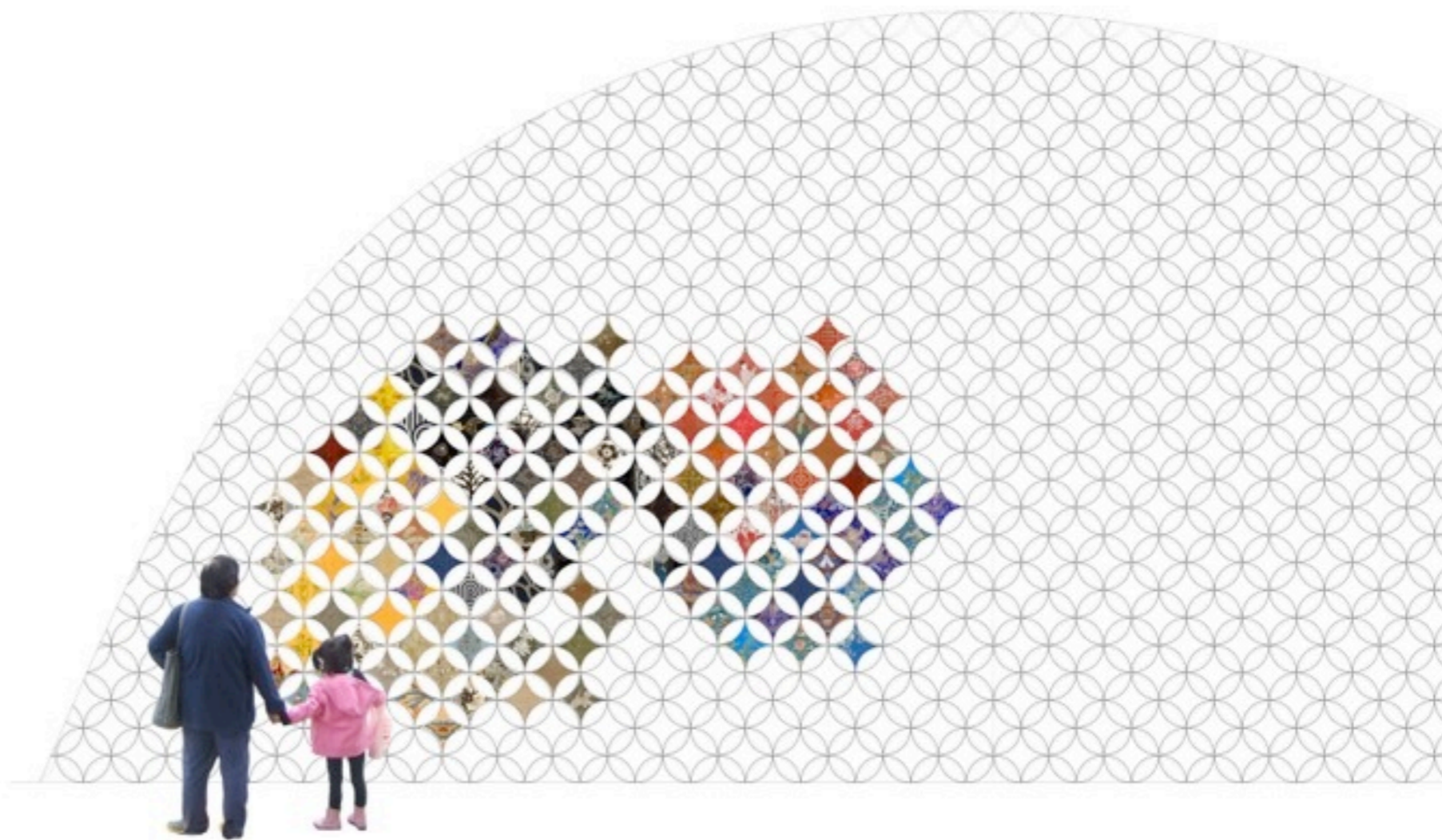
34'-10"



1'



2'

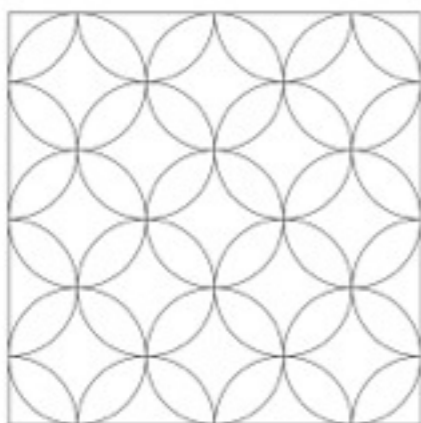


1.5" = 1'





1'

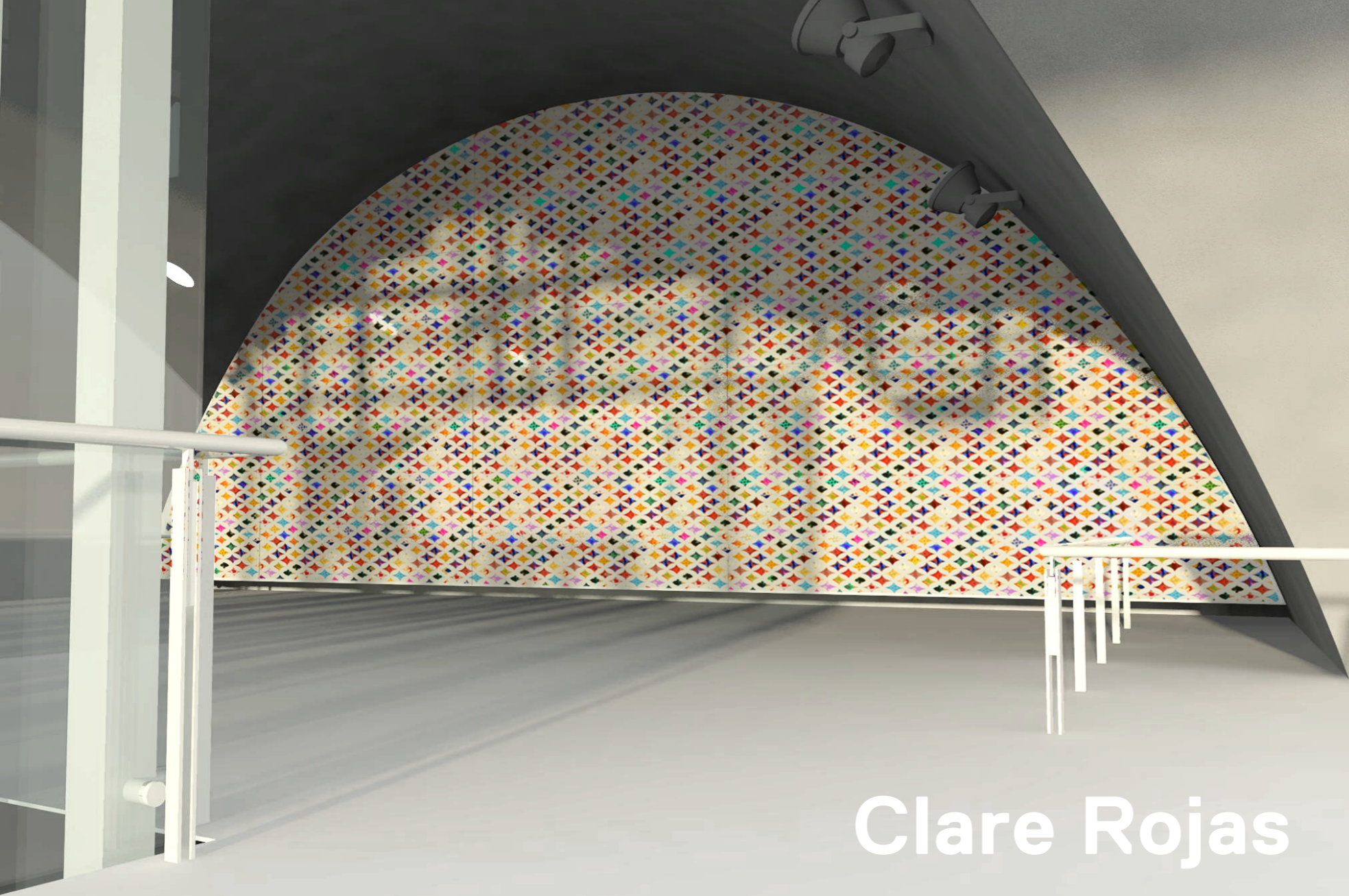


2'



1.5" = 1'





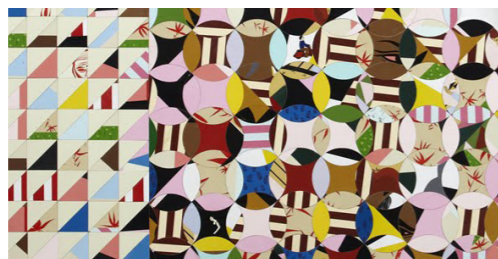
# Clare Rojas

## A Sense of Community

Through carefully selected swatches of textiles, the cathedral quilt pattern illustrates a sense of community and unity in the Chinatown neighborhood. Each swatch depicts an image of an individual person within the community. This piece, connected to the larger pattern, demonstrates the individual's connection to the unified Chinese Culture as a whole. The textiles chosen will be of Chinese decent and culture.



**Cathedral Quilt**  
This traditional quilting style uses various patchwork patterns that, when sewn together, give the effect of a stained glass window.



### Recent Work

**We They, We They**  
Installation at the San Francisco Museum of Craft and Folk Art

