

Civic Design Review Phase 1

Chinatown Plaza

Application for Review submitted May 12, 2014

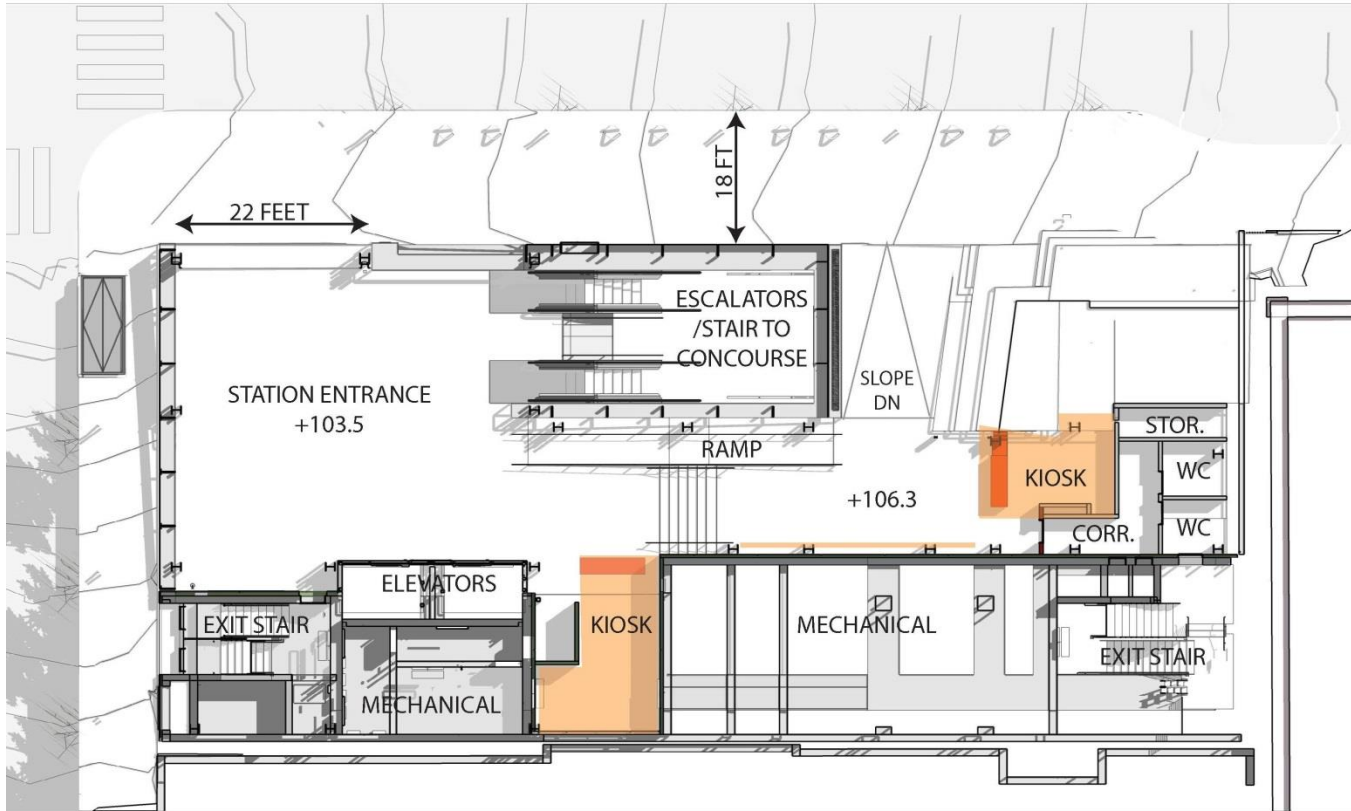


Chinatown Plaza Changes since previous review

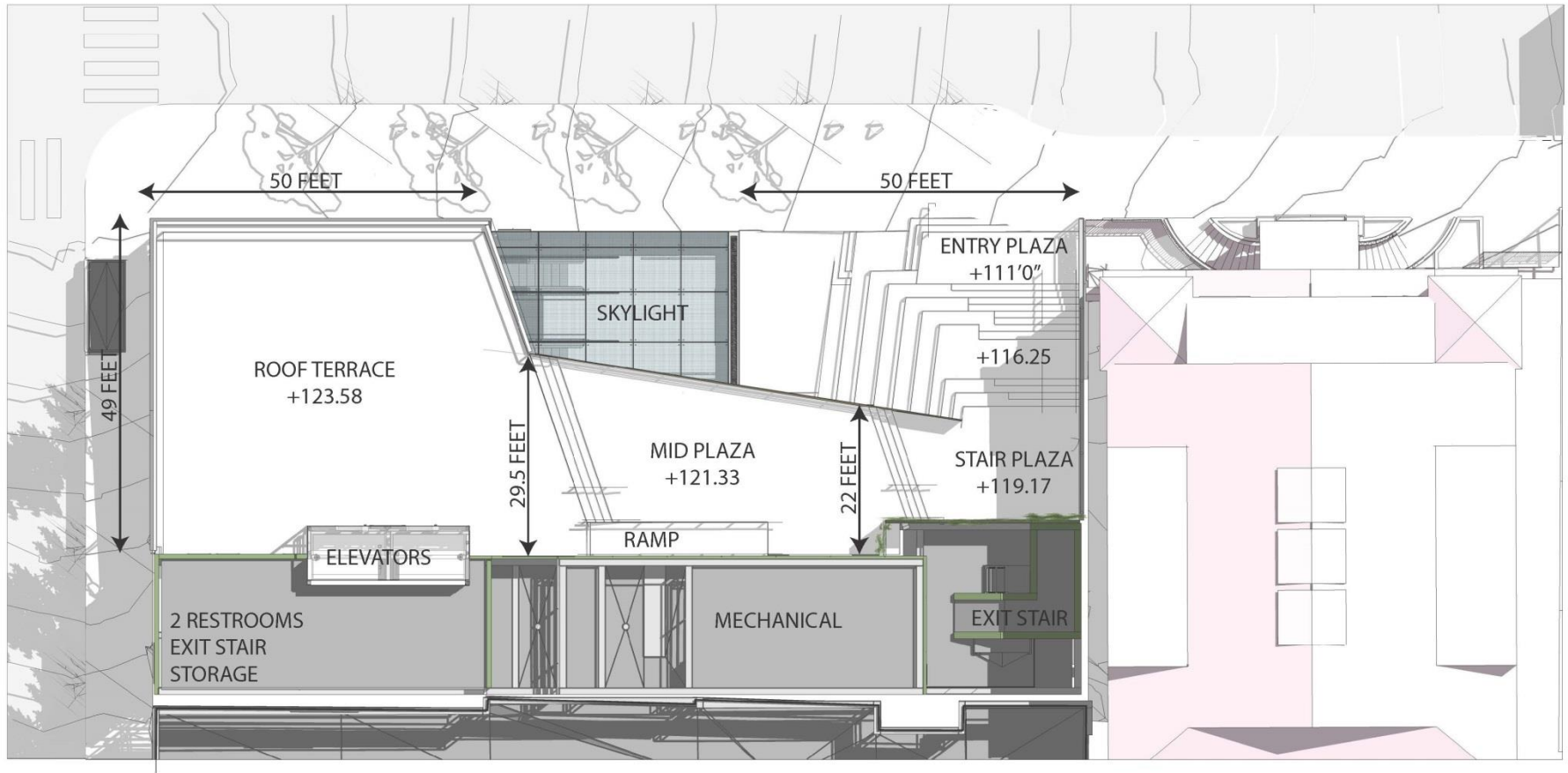
- Phase 3 of Chinatown Station was approved Jan. 23, 2012
- Community-led process to determine use above station completed Oct. 2013
 - Goals, program & conceptual design developed during multiple community workshops and meetings
- Key changes to the Station & Station Site since Phase 3 approval:
 - Secondary entrance to the station along Stockton St.
 - Addition of a Public Rooftop Plaza including Stair/Seating along Stockton St.
 - Scope of Artwork Extended along Washington St. ,South Elevation



Chinatown Plaza Surface Level Plan



Chinatown Plaza Roof Level Plan



Chinatown Station View from Station Entrance looking South



Chinatown Station View from Station Entrance looking South

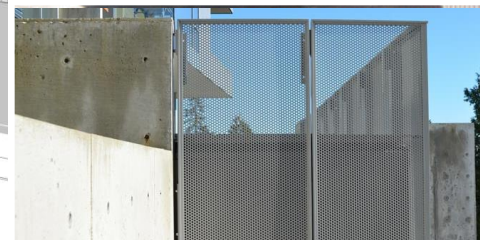


Chinatown Plaza

View from across Stockton Street



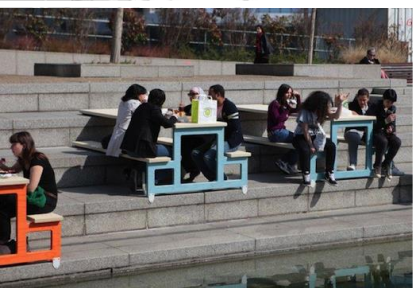
Chinatown Plaza View from Stockton Street



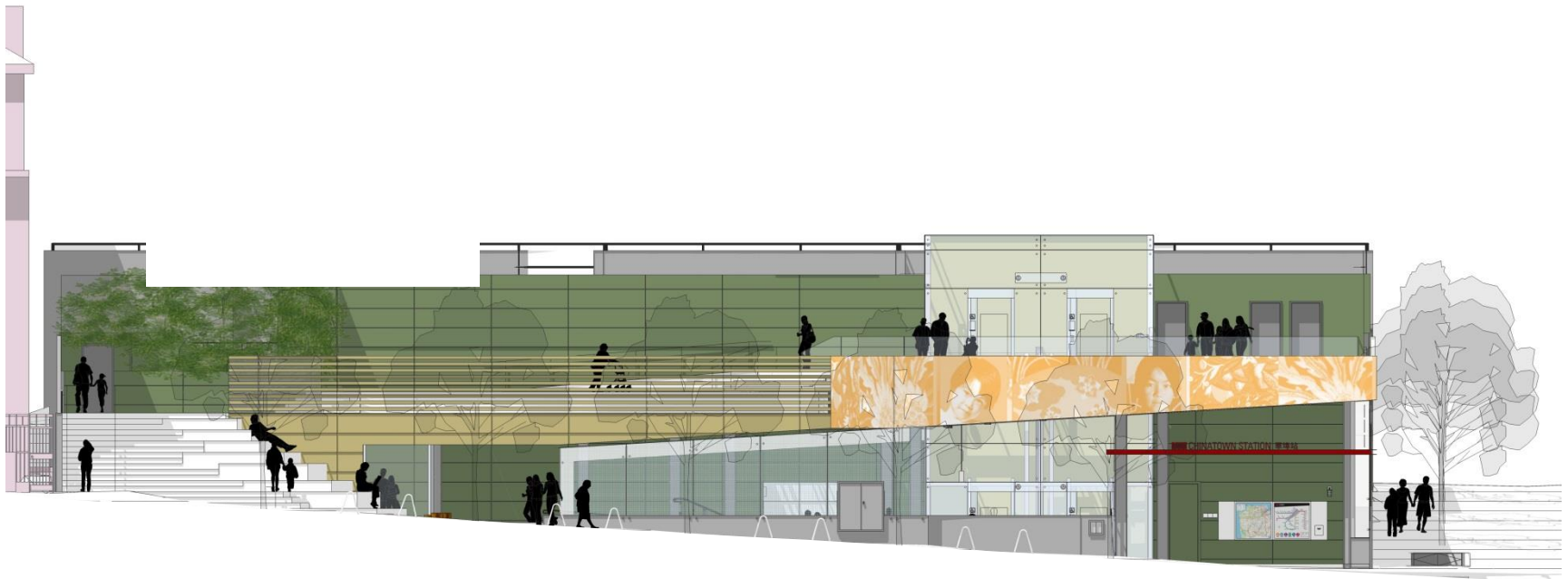
Chinatown Plaza View of Roof Plaza



Chinatown Plaza View of Roof Plaza



Chinatown Plaza Stockton St. Elevation



Chinatown Plaza Washington St. Elevation



Chinatown Plaza

View from across Washington Street

