



# Restroom Bond Program

## Civic Design Review

“Contemporary” Design – Phase 3  
For DuPont Courts Restroom

*February 10, 2014*

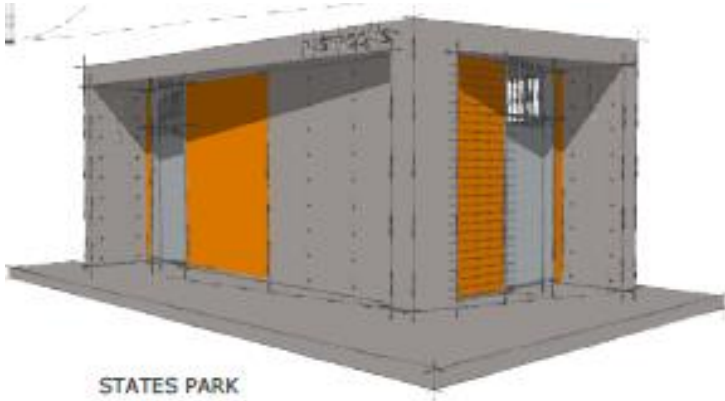


# Replacement Sites





# States Street Restroom







# DuPont Tennis Courts



31ST. AVENUE VIEW



31TH. AVENUE VIEW

SURROUNDING AREAS



LOCATION OF EXISTING RESTROOMS

PROJECT LOCATION - SITE MAP



EXISTING CONDITIONS



# Changes Since Phase 2

## Phase 2 Comments

- Use steel form with snap ties (ala Tadao Ando)
- Use blue tile on exterior

## Approved for States St.

- Expanded plumbing chase
- Slits on privacy walls



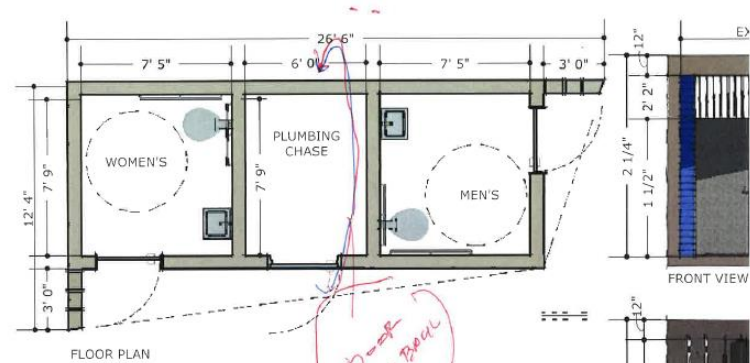
# Administrative Approval

Hi Marvin,

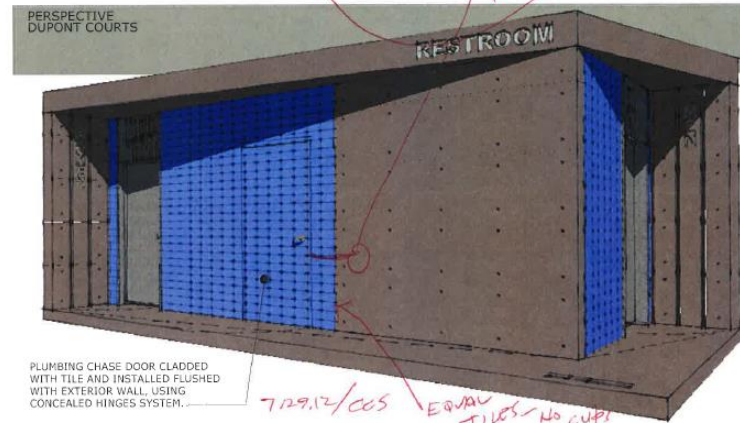
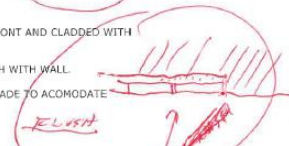
I've attached Commissioner Smith's comments on the designs. I followed up with him to explain that the maintenance doors need to be on the front of the buildings and he agreed that it is okay. Please see the other recommendations.

Thanks,

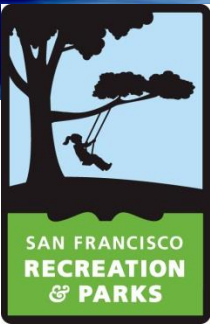
Vicky Knoop, Program Manager  
Civic Design Review | San Francisco Arts Commission



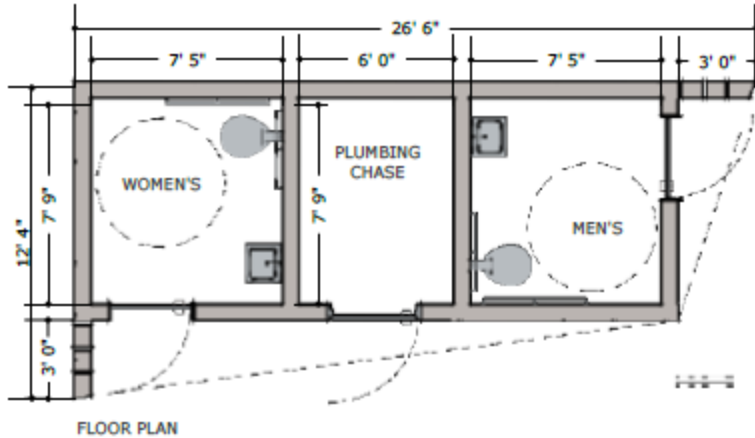
**NOTES:**  
PLUMBING CHASE DOOR MOVE FROM BACK TO THE FRONT AND CLADDED WITH MATCHING TILE, FLUSHED WITH WALL.  
CONCEALED HINGES SYSTEM TO INSTALL DOOR FLUSH WITH WALL.  
EXTEND TILE COVERING SURFACE ON THE FRONT FACADE TO ACOMODATE RELOCATION OF CHASE DOOR.



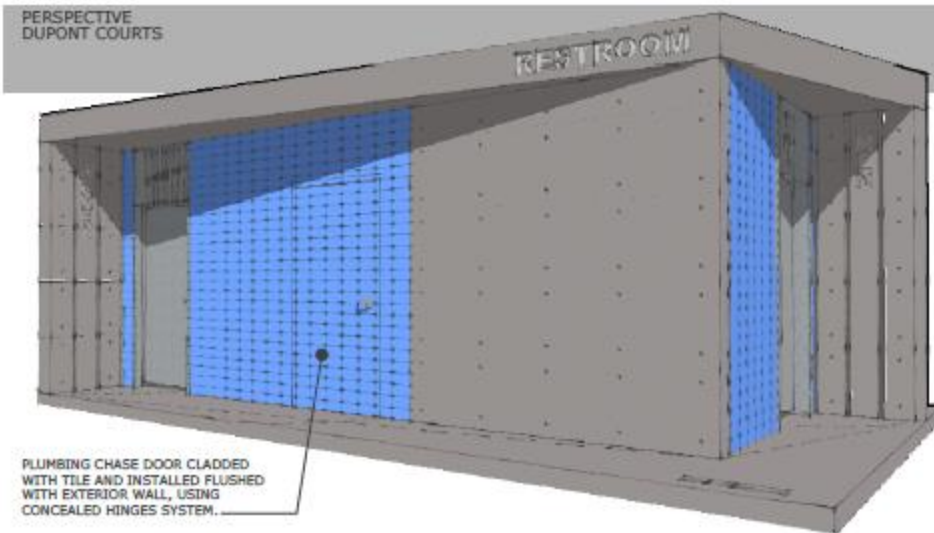
PLUMBING CHASE DOOR CLADDED WITH TILE AND INSTALLED FLUSHED WITH EXTERIOR WALL, USING CONCEALED HINGES SYSTEM.



# Summary of Changes



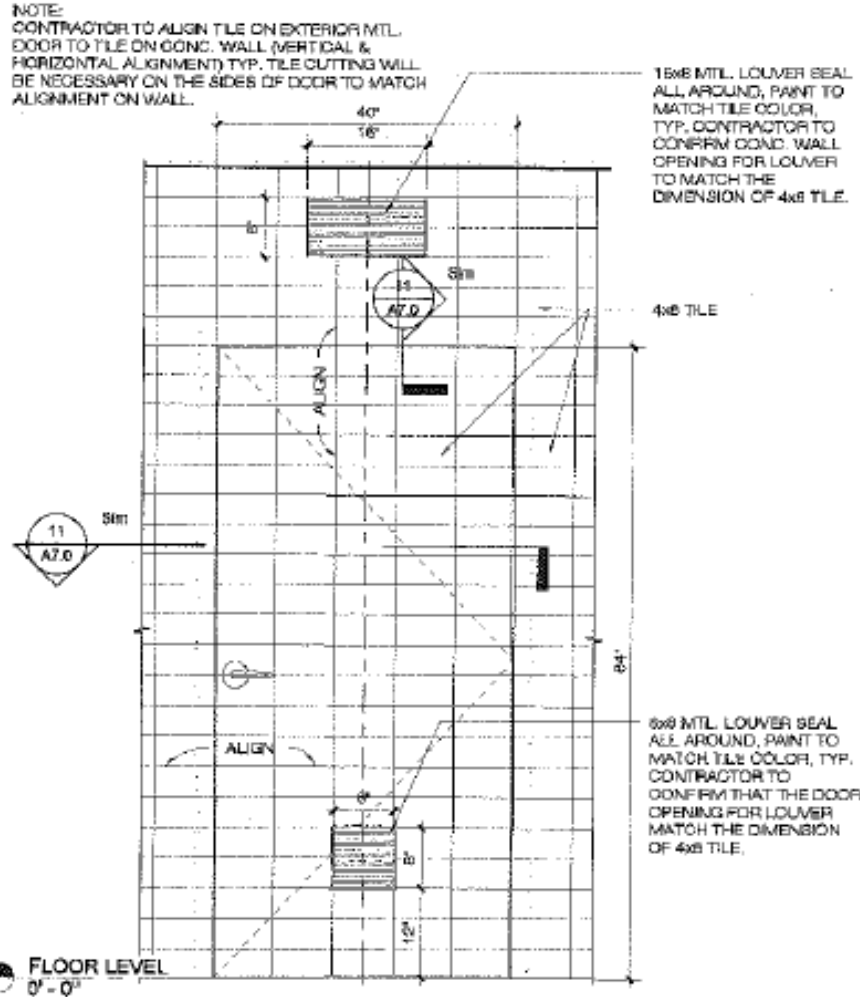
- Use steel form with snap ties (ala Tadao Ando)
- Use blue tile on exterior
- Expanded plumbing chase
- Slits on privacy walls
- Relocate plumbing chase door to front
- Flush door with tiles
- Tiles to contain no cuts







# Plumbing Chase Door: Detail 4 - Sheet A7.0



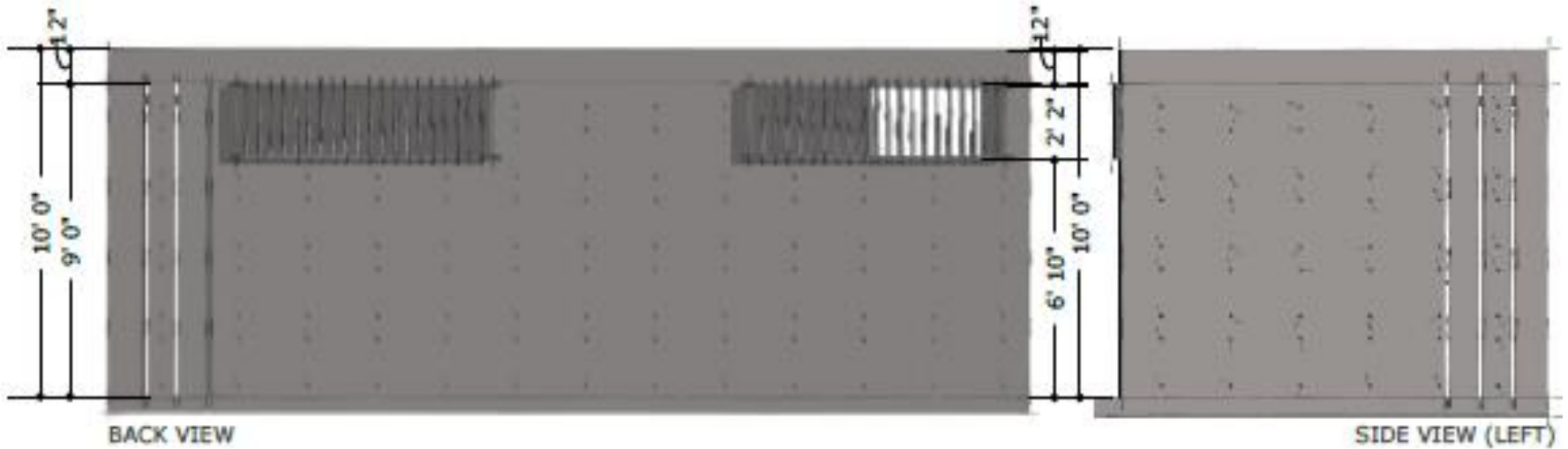
**4** PLUMBING CHASE DOOR ELEVATION  
3/4" = 1'-0"







# Back and Side Views





# Contemporary Design At DuPont Courts





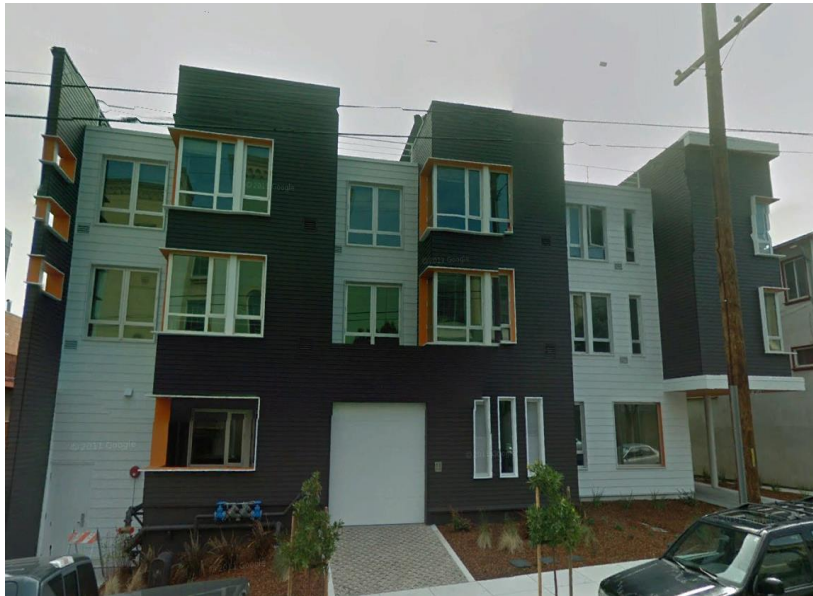


# Architectural Diversity





# Architectural Diversity

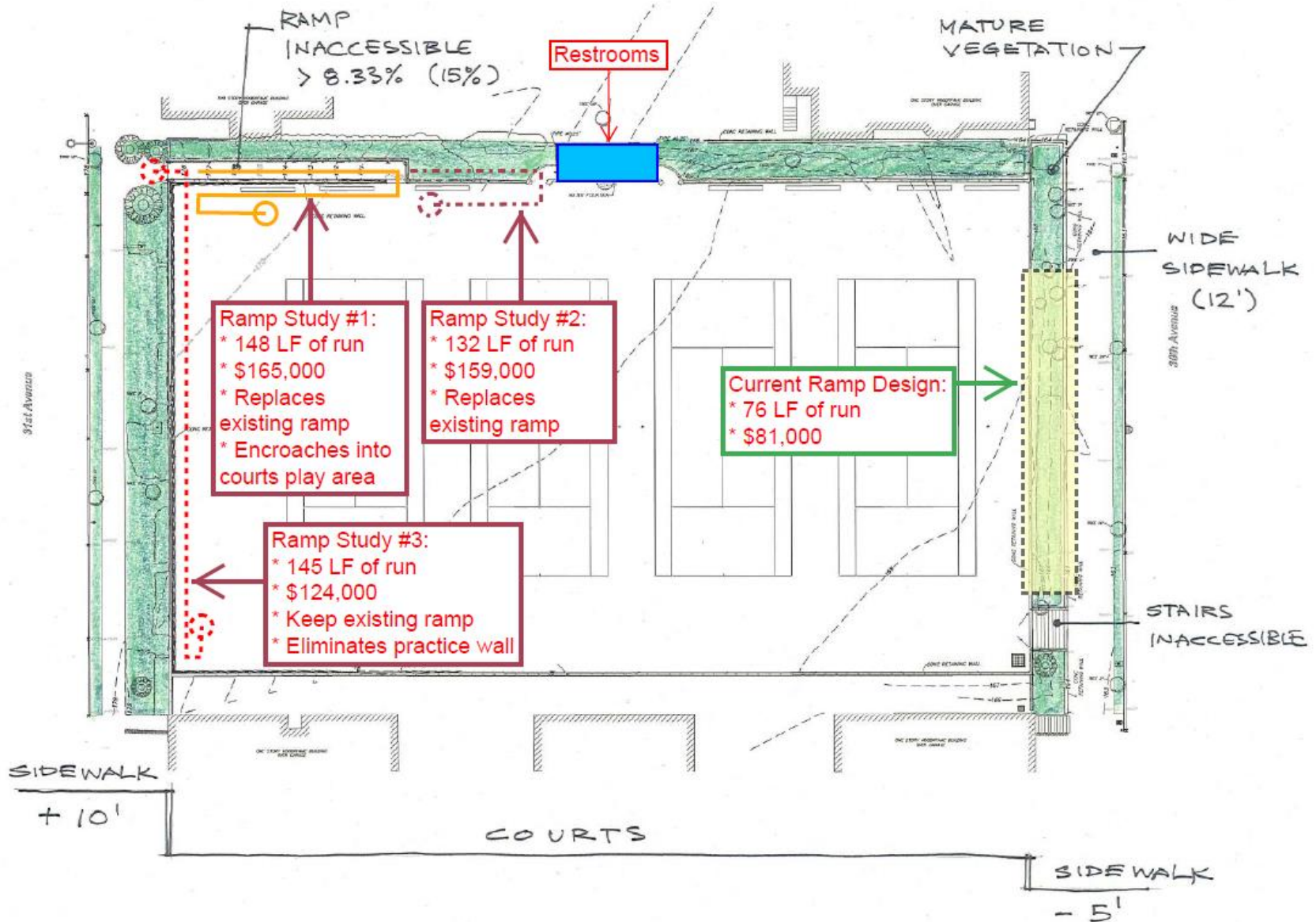




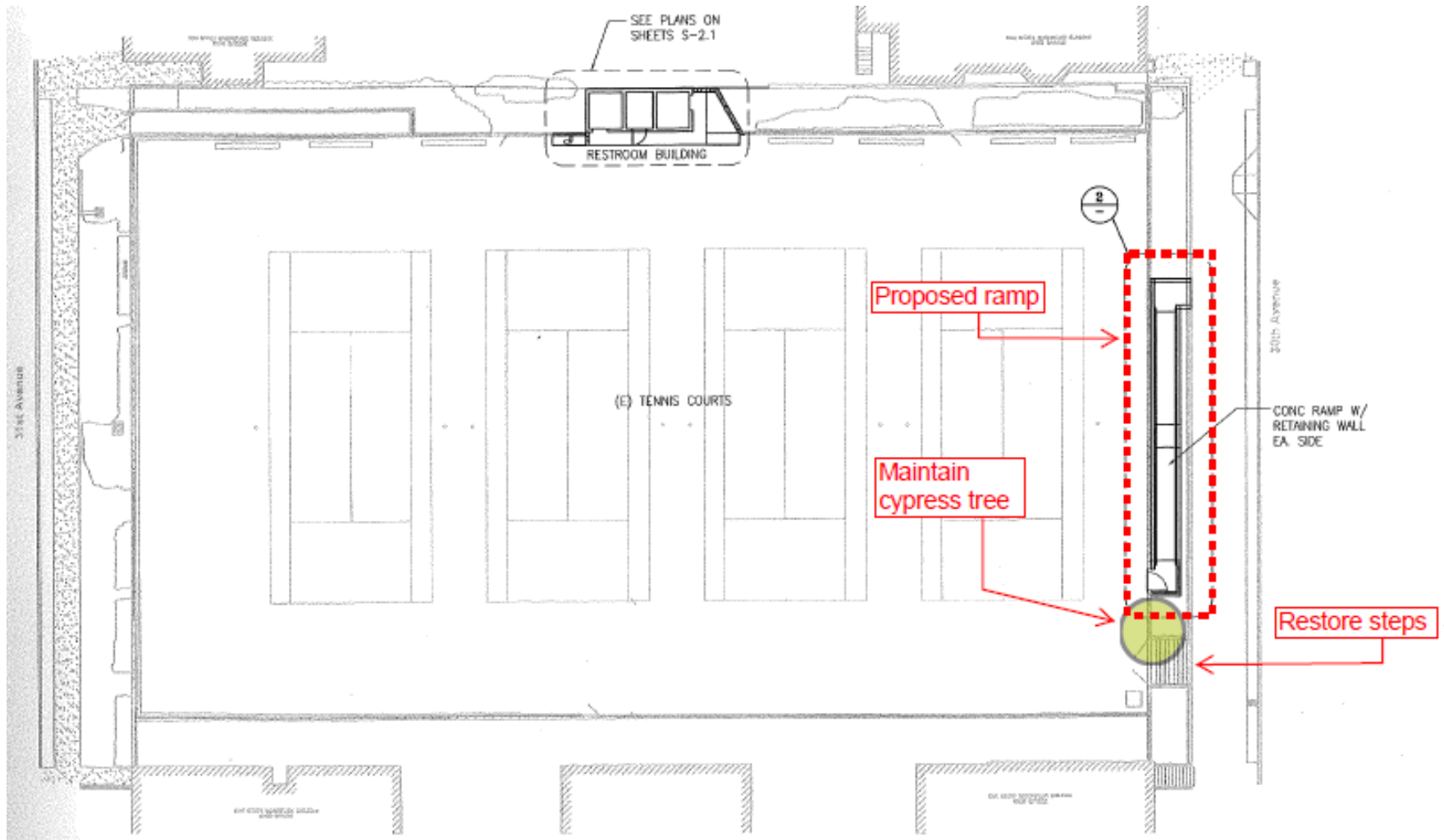




# Wheelchair Ramp Studies



# Proposed Ramp Layout





# Dupont Courts – 30<sup>th</sup> Ave Frontage





# Dupont Courts Accessible Ramp





# Plant Selections



Phormium 'Duet' (New Zealand Flax)



Salvia leucantha (Purple Sage)



# TENTATIVE – Additional Street Trees

*(subject to discussions with Public Works)*



Before (above)  
and After (right)





**Thank you!**