

# ***Dogpatch Arts Plaza***

***SCHEMATIC PHASE - CIVIC DESIGN REVIEW 1.13.2014***









*Pocket Plaza*

*Outdoor Gallery*

# Community Outreach

## **Partners Coalition**

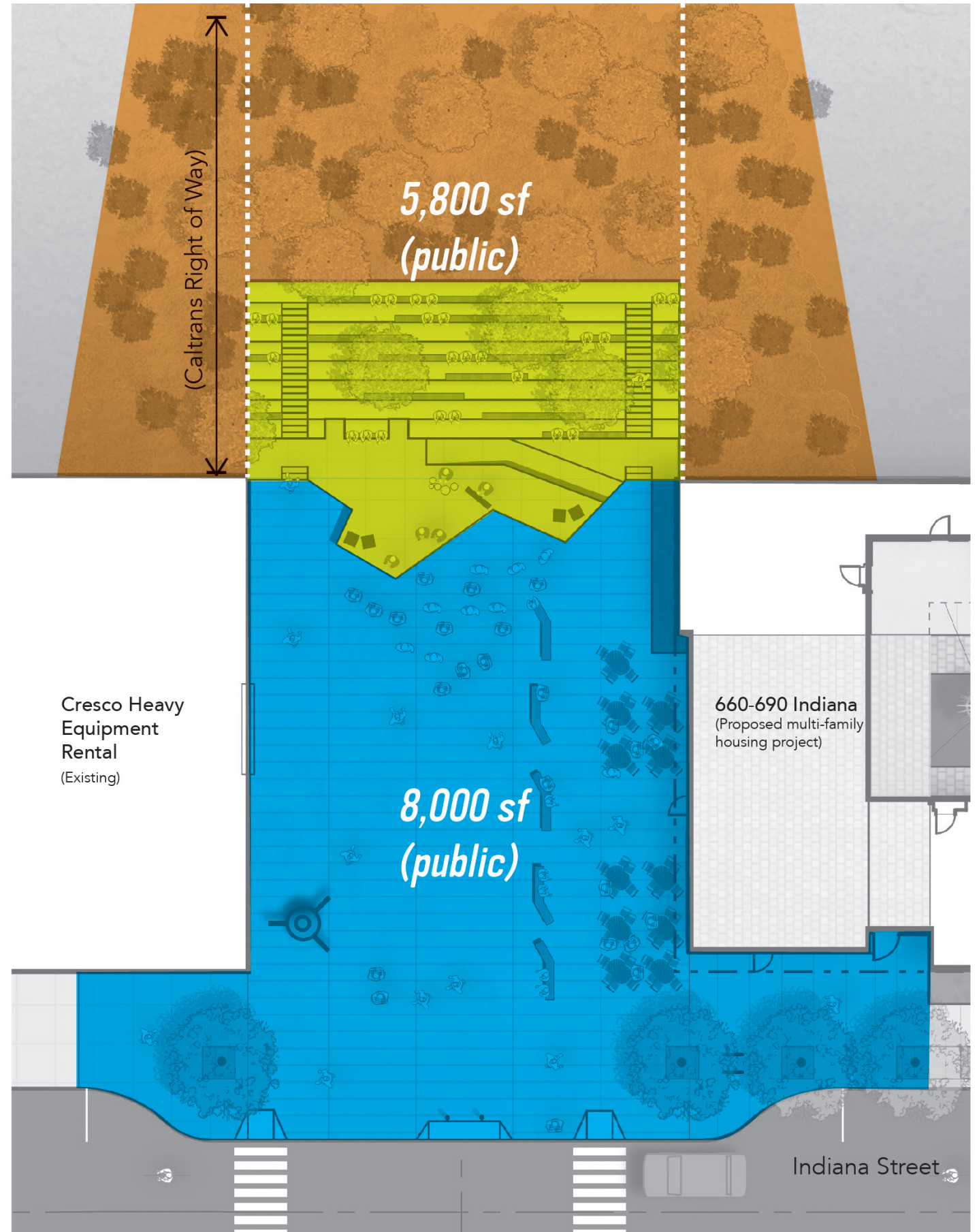
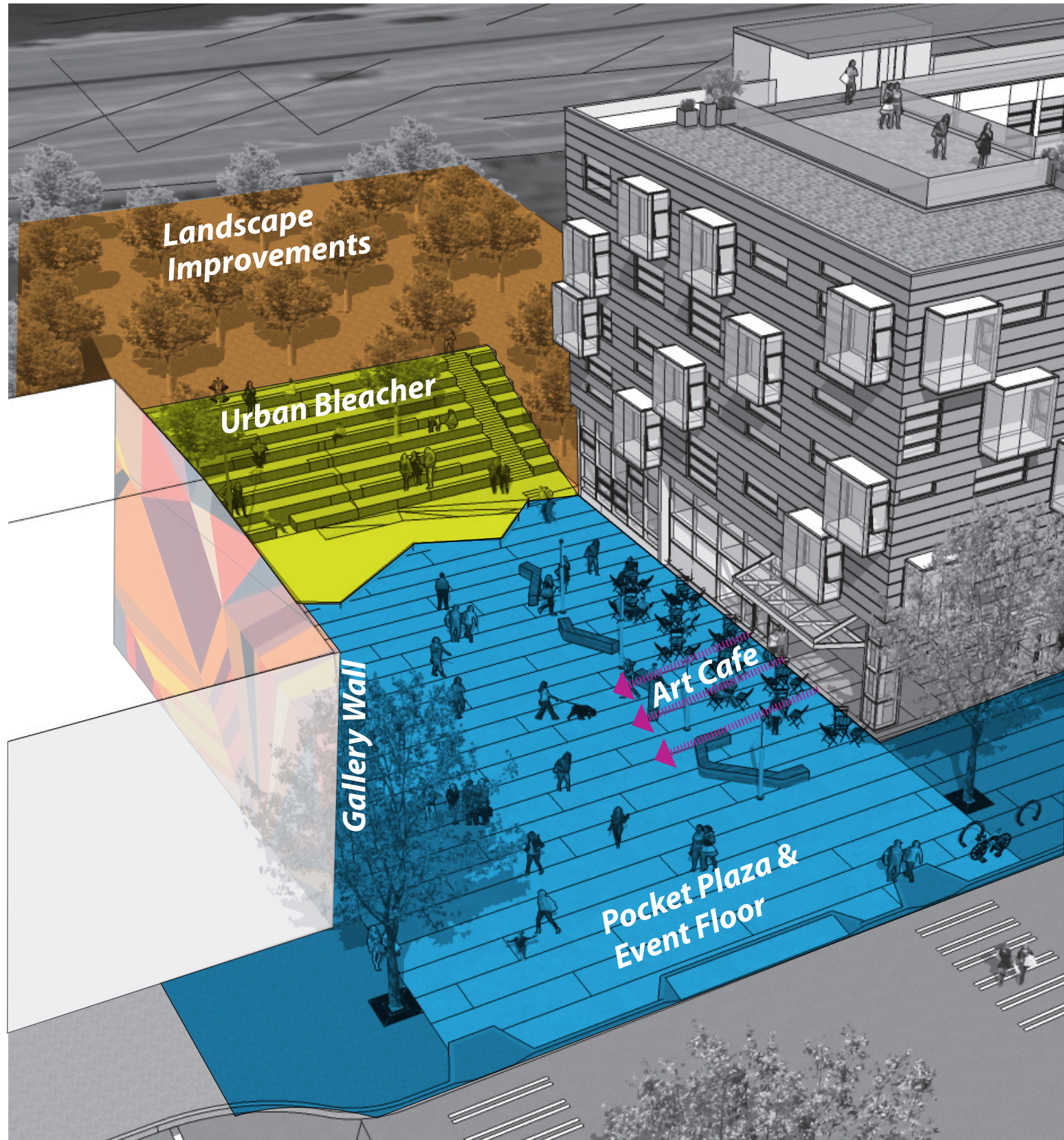
The Burning Man Project  
Five-Ton Crane  
For-site Foundation  
CMG Landscape Architecture

The Arts Coalition held its initial meeting on January 7th. This expanding group of local and regional arts organizations will work with UP Urban to develop a programming and funding plan for the Plaza.

## **Neighborhood Advisory Group**

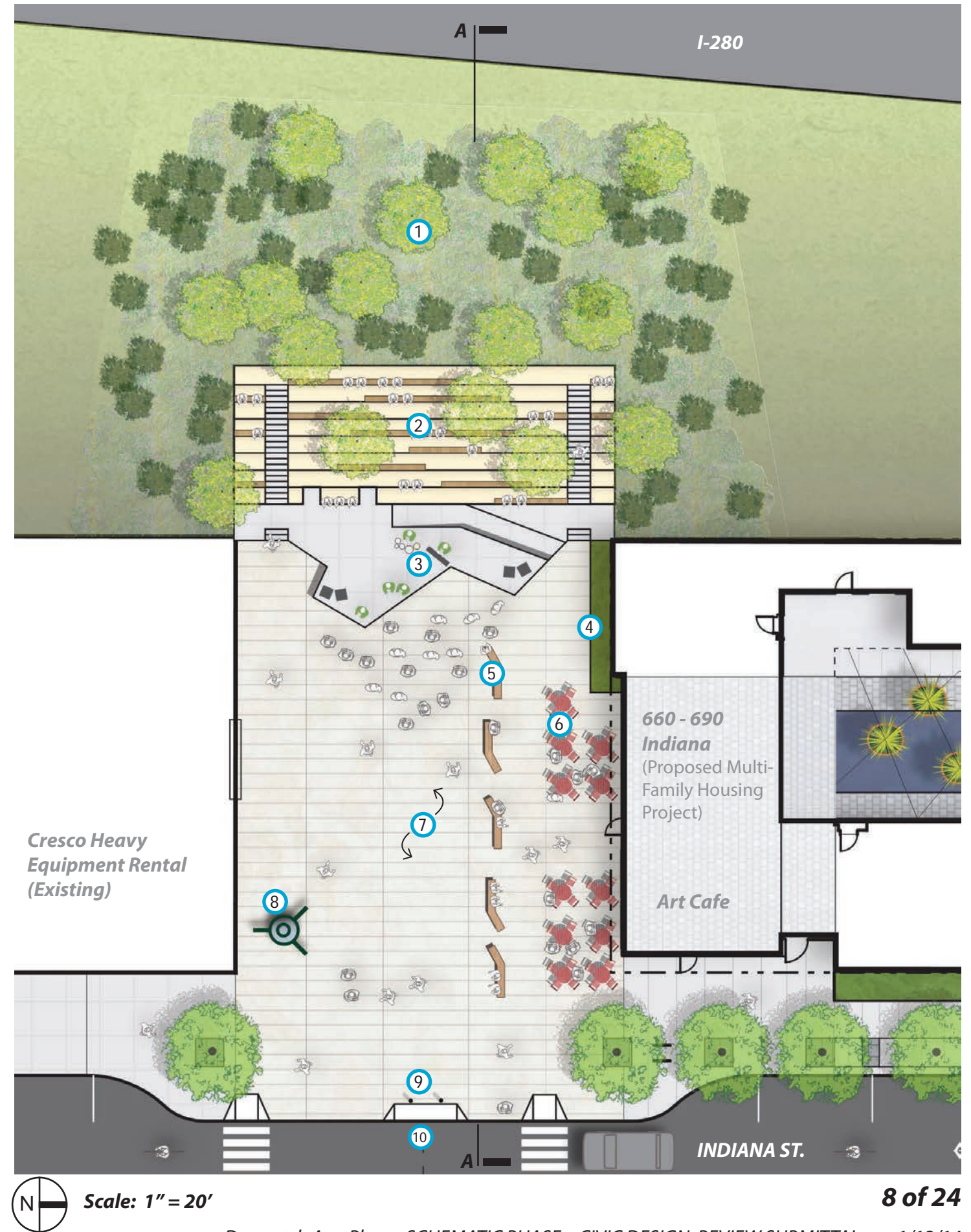
*Chaired by Susan Eslick*

On January 8th, this group of neighborhood leaders held a first meeting, during which it provided initial feedback on the project and began planning broader community outreach efforts.



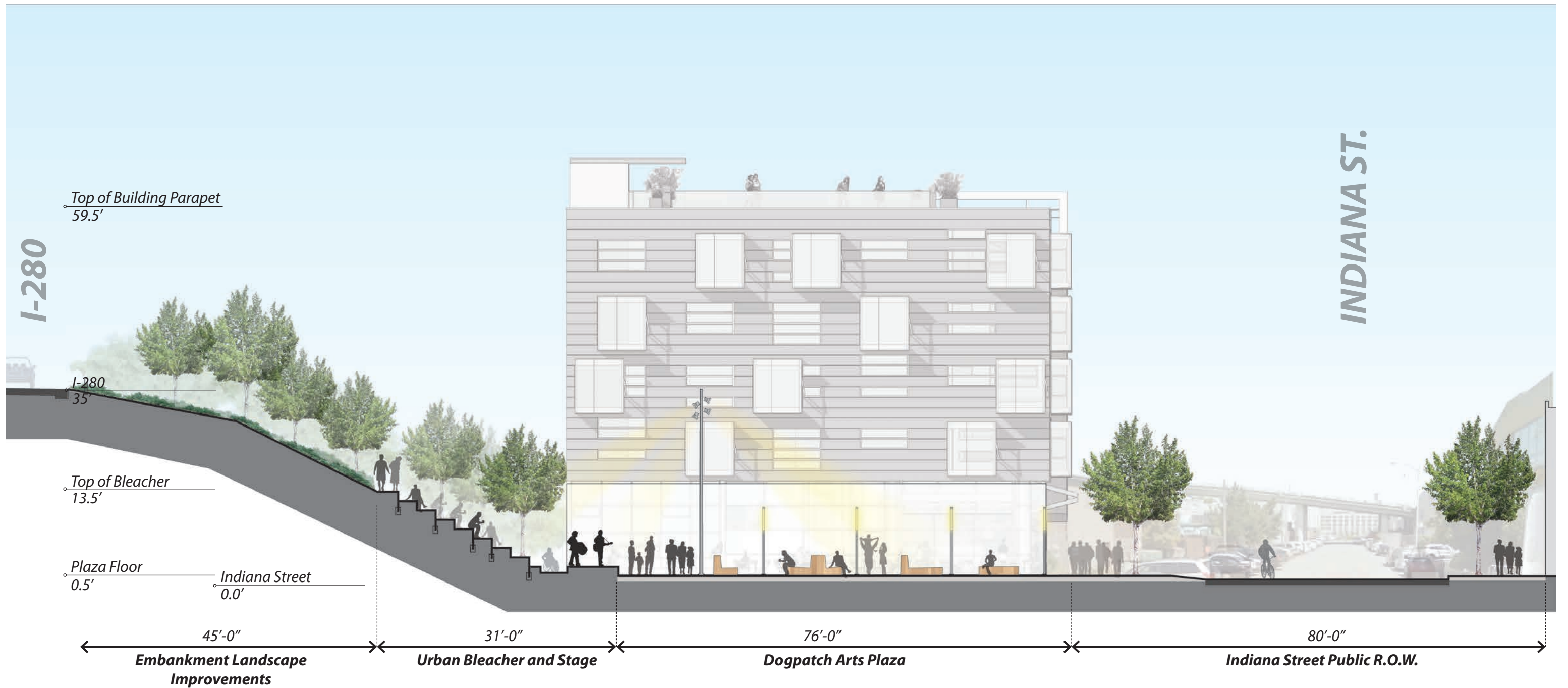
**KEY NOTES**

- ① **Caltrans Embankment**  
Landscape improvements including understory and tree planting.
- ② **Corten Steel Urban Bleachers**  
Corten Wall with Concrete Bleacher and Stairs
- ③ **Event Stage**  
Concrete with ADA accessible ramp
- ④ **Rain Garden Planter**  
Stormwater Treatment and Buffer
- ⑤ **Custom Moveable Seating**
- ⑥ **Cafe Tables and Chairs**
- ⑦ **Plaza Floor**  
High Quality Cast in Place Concrete with Ground Finish
- ⑧ **Large Scale Art Installation Site**
- ⑨ **Removeable Bollards**
- ⑩ **Curb Cut - Vehicle Access**  
Limited Access for Cresco Equipment Rental and Plaza Programs

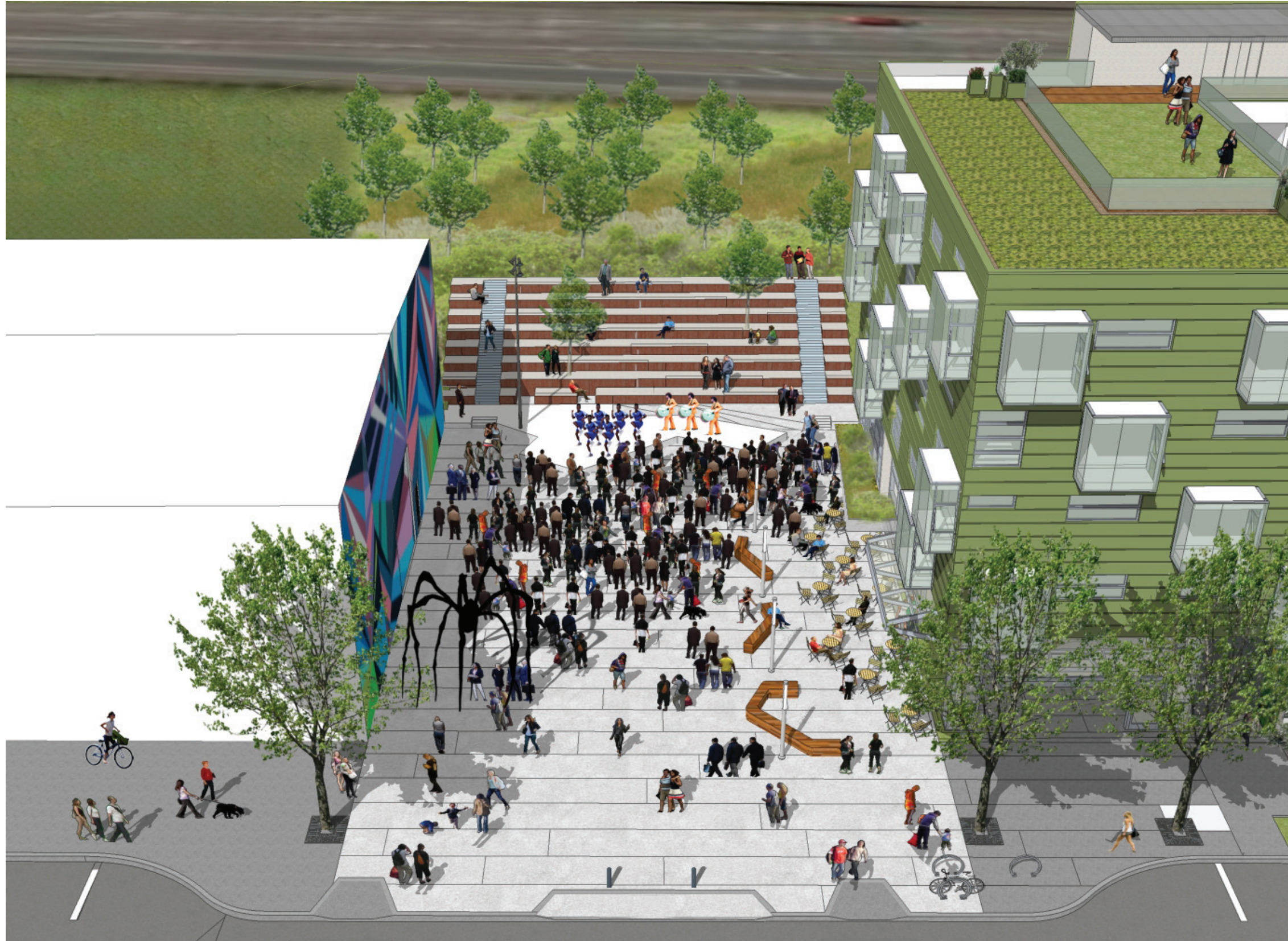


Scale: 1" = 20'





**Section A- Looking North**





**View from 19th Street**



**View @ Corner of 19th toward Art Cafe**