

Julia Laue - Principal Architect & Manager
30 Van Ness Avenue Suite 4100
San Francisco, CA (415) 557-4700
94102-6028 Fax (415) 5574701

Project
**EARTHQUAKE SAFETY AND
EMERGENCY RESPONSE BOND
(E.S.E.R. 1)**

FIRE STATION No.: 16
2251 GREENWICH STREET
SAN FRANCISCO, CA 94123

Consultant

Issue

CONSTRUCTION DOCUMENTS
100% SET - 01.31.14

No.	Date	Revisions
x	xx.xx.xx	xx

Drawn	MH / JD
Proj. Arch.	B. Olguin
Proj. Mgr.	G. J. Cirelli
Section Head	T. Leung
Phase	CD

Drawing Title

**EXTERIOR
ELEVATIONS
NORTH & SOUTH**

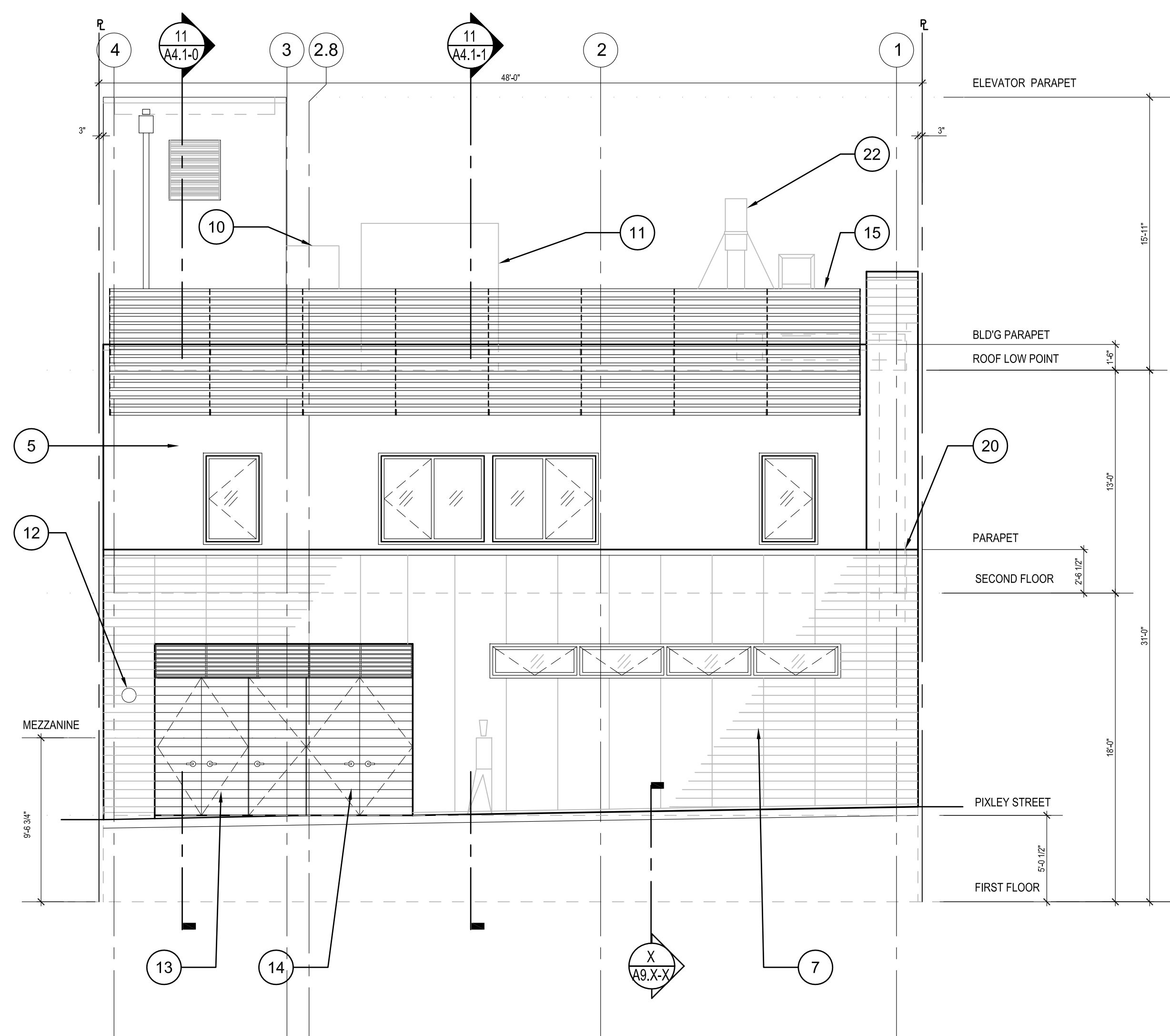
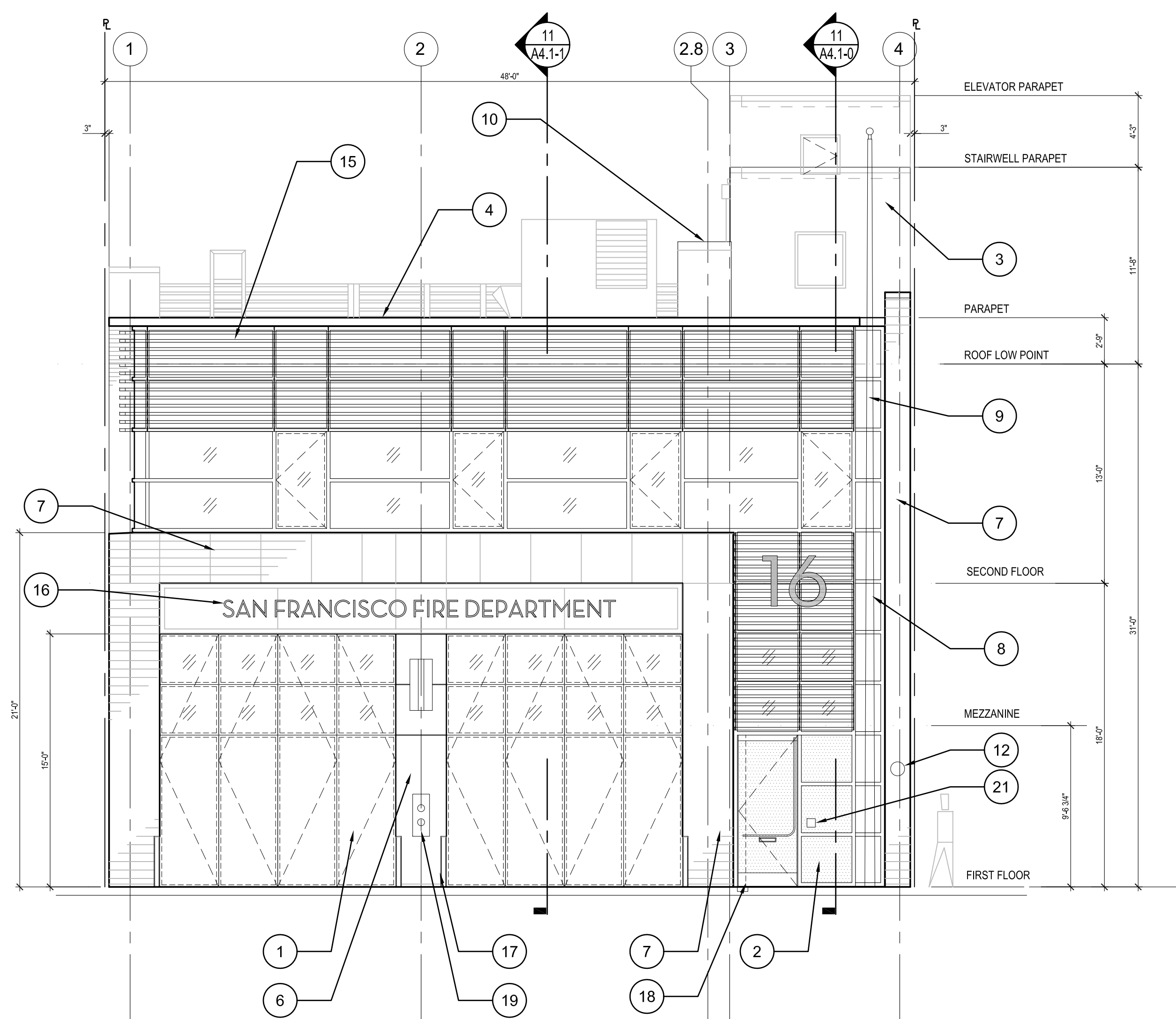
Sheet No.

A3.0-0

Scale

Job No.

7442A



11 EXTERIOR ELEVATION - NORTH
SCALE: 3/16" = 1'-0"

5 EXTERIOR ELEVATION - SOUTH
SCALE: 3/16" = 1'-0"

GENERAL NOTES

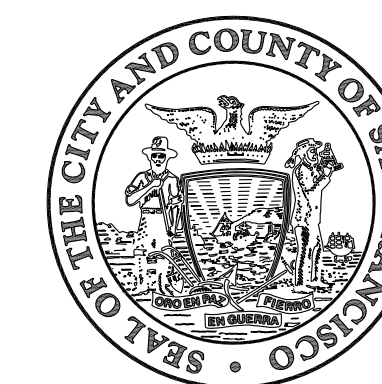
1. EXTERIOR ELEVATIONS MATERIAL FINISHES ARE CONCEPTUAL AND NOT YET FINALIZED OR APPROVED.

SHEET NOTES

- 1 BI-FOLDING APPARATUS BAY DOORS, RED WITH TOP VISION PANELS.
- 2 OBSCURE FILM (SHOWN HATCHED), SEE A5.7-0 AND A7.7-1.
- 3 STAIR TOWER BEYOND.
- 4 STRUCTURAL STAINLESS STEEL WINDOW SYSTEM CAP.
- 5 CEMENT PLASTER EXTERIOR, TYP., UON
- 6 METAL PANEL SYSTEM OVER METAL STUD FRAMING.
- 7 STONE VENEER ON THIN SET MORTAR, 6'H x 36"L x 3/8" THICK.
- 8 FLAG POLE, 45 FEET, ALUMINUM.
- 9 BUTTED GLASS, FULL HEIGHT - RED FINISH.
- 10 EMERGENCY GENERATOR, GENERAC SD030 WITH MODIFIED LEVEL 1 SOUND ENCLOSURE AND 20 HOUR, 54 GALLON BELLY TANK.
- 11 ROOF TOP MECHANICAL EQUIPMENT, SMD
- 12 FIRE DEPARTMENT ALARM BELL.
- 13 TRASH STORAGE.
- 14 PIXLEY STREET FIRE FIGHTER ENTRANCE.
- 15 SCREENING SYSTEM, SLATTED MEMBERS, TYP.
- 16 STATION IDENTIFICATION SIGNAGE.
- 17 TRIM / WALL PROTECTION, STAINLESS STEEL PLATE, 1/2 INCH, TYP. OF 4.
- 18 DOOR, FRAMELESS GLASS, PIVOTING, RECESSED CLOSER, MAIL SLOT, SEE A9.4-3.
- 19 FIRE DEPARTMENT CONNECTION.
- 20 COPING, ZINC, 4 INCHES, TYP. - COORDINATE REVEALS WITH ARCHITECT.
- 21 INTERNATIONAL DISABILITY STICKER, 6" x 6", CONTRASTING BLUE AND WHITE IMAGE.
- 22 KITCHEN EXHAUST FAN, S.M.D.

LEGEND

- PROPERTY LINE
- ADJACENT BUILDING FOOTPRINT
- ELEVATION
- BUILDING SECTION
- WALL SECTION
- DETAIL & SHEET NUMBER



Julia Laue - Principal Architect & Manager
30 Van Ness Avenue Suite 4100
San Francisco, CA (415) 557-4700
94102-6028 Fax (415) 5574701

Project
**EARTHQUAKE SAFETY AND
EMERGENCY RESPONSE BOND
(E.S.E.R. 1)**

FIRE STATION No.: 16
2251 GREENWICH STREET
SAN FRANCISCO, CA 94123

Consultant

Issue

CONSTRUCTION DOCUMENTS
100% SET - 01.31.14

No.	Date	Revisions
x	xx.xx.xx	xx

Drawn: MH / JD
Proj. Arch.: B. Olguin
Proj. Mgr.: G. J. Cirelli
Section Head: T. Leung
Phase: CD

Drawing Title

**EXTERIOR
ELEVATIONS
EAST**

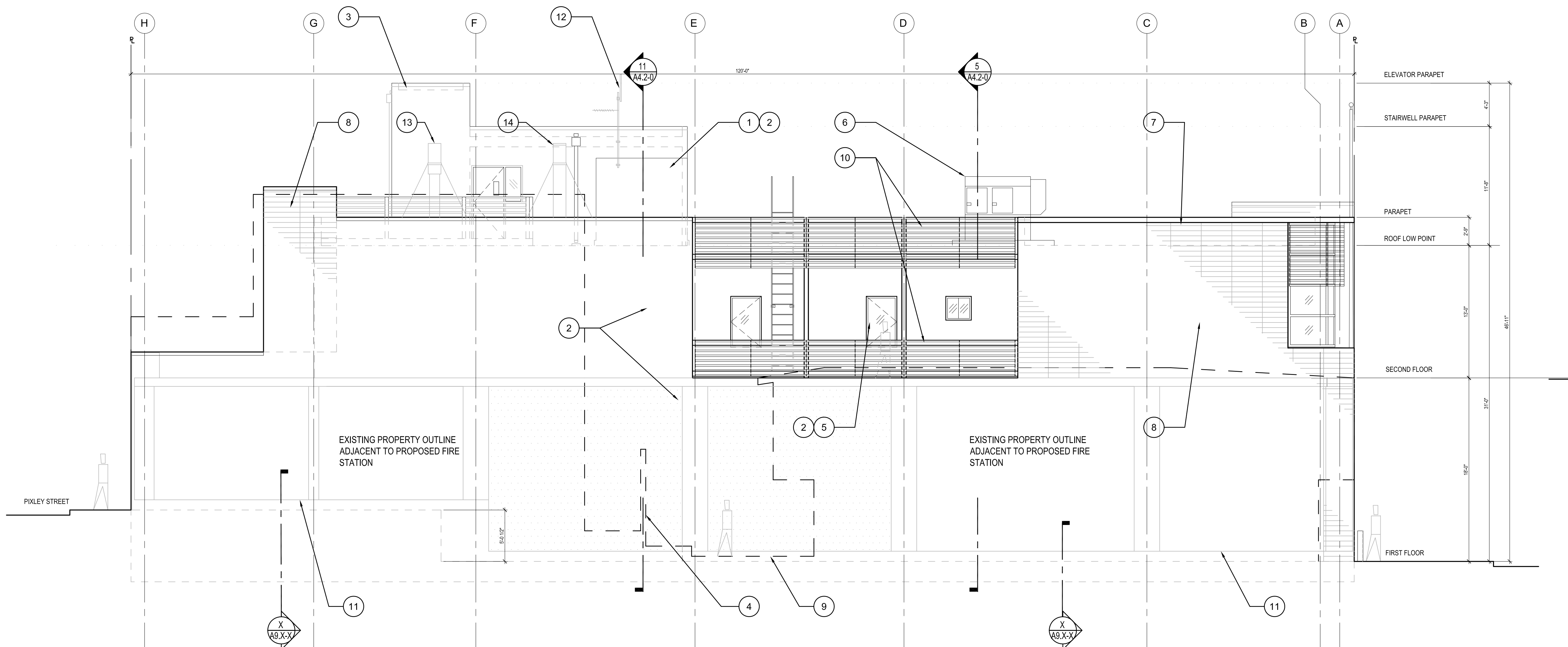
Sheet No.

A3.2-0

Scale

Job No.

7442A



11 EXTERIOR ELEVATION - EAST
SCALE: 3/16" = 1'-0"

GENERAL NOTES

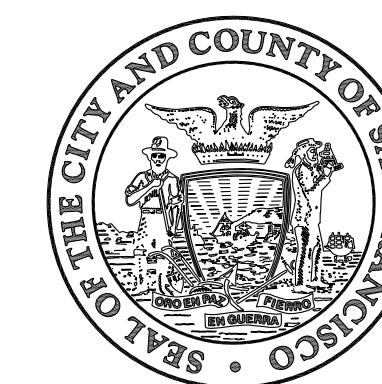
1. EXTERIOR ELEVATIONS MATERIAL FINISHES ARE CONCEPTUAL AND NOT YET FINALIZED OR APPROVED.

SHEET NOTES

- 1 STAIR / ELEVATOR TOWER
- 2 CEMENT PLASTER EXTERIOR FINISH, PAINT TYP., U.O.N.
- 3 ELEVATOR CORE ROOF
- 4 FENCE ON PROPERTY LINE; LOCATION APPROXIMATED.
- 5 ROOF DECK, OPEN AT SECOND FLOOR
- 6 EMERGENCY GENERATOR, GENERAC SD030 WITH LEVEL 2 SOUND ENCLOSURE AND 20 HOUR, 54 GALLON BELLY TANK.
- 7 STRUCTURAL STAINLESS STEEL METAL WINDOW SYSTEM CAP.
- 8 STONE VENEER OVER THIN SET MORTAR, TYP.
- 9 ADJACENT PROPERTY GRADES; APPROXIMATED. REFER TO DRAWING C1.0-0.
- 10 SLATTED SCREENING, TYP.
- 11 TOP OF STRUCTURAL FOUNDATION WALL, S.S.D., TYP.
- 12 RADIO ANTENNA, OFCI
- 13 KITCHEN EXHAUST FAN, S.M.D.
- 14 VEHICLE EXHAUST FAN, S.M.D.

LEGEND

- PROPERTY LINE
- ADJACENT BUILDING FOOTPRINT
- ELEVATION
- BUILDING SECTION
- WALL SECTION
- DETAIL & SHEET NUMBER



Julia Laue - Principal Architect & Manager
30 Van Ness Avenue Suite 4100
San Francisco, CA (415) 557-4700
94102-6028 Fax (415) 5574701

Project

EARTHQUAKE SAFETY AND
EMERGENCY RESPONSE BOND
(E.S.E.R. 1)

FIRE STATION No.: 16
2251 GREENWICH STREET
SAN FRANCISCO, CA 94123

Consultant

Issue

CONSTRUCTION DOCUMENTS
100% SET - 01.31.14

No.	Date	Revisions
x	xx.xx.xx	xx

Drawn	MH / JD
Proj. Arch.	B. Olguin
Proj. Mgr.	G. J. Cirelli
Section Head	T. Leung
Phase	CD

Drawing Title

EXTERIOR
ELEVATIONS
WEST

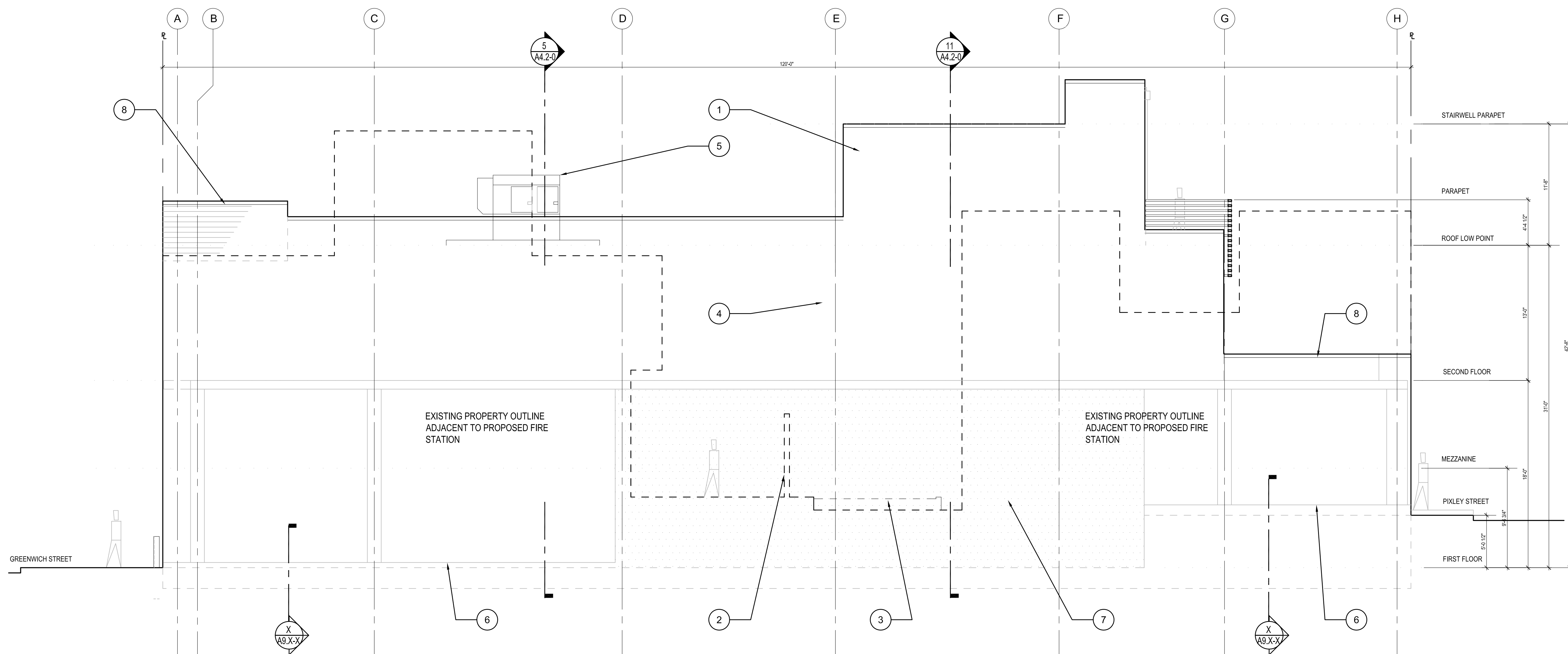
Sheet No.

A3.1-0

Scale

Job No.

7442A



11 EXTERIOR ELEVATION - WEST
SCALE: 3/16" = 1'-0"

GENERAL NOTES

1. EXTERIOR ELEVATIONS MATERIAL FINISHES ARE CONCEPTUAL AND NOT YET FINALIZED OR APPROVED.

SHEET NOTES

- 1 STAIR / ELEVATOR TOWER.
- 2 EXISTING FENCE AT PROPERTY LINE; LOCATION APPROXIMATED.
- 3 ADJACENT PROPERTY GRADES; APPROXIMATED. REFER TO DRAWING C1.0-0.
- 4 EXPOSED WALLS - CEMENT PLASTER FINISH, PAINTED TYP., UON
- 5 EMERGENCY GENERATOR, GENERAC SD050 WITH LEVEL 2 SOUND ENCLOSURE AND 72 HOUR, 300 GAL. TANK.
- 6 TOP OF STRUCTURAL FOUNDATION WALL, S.S.D., TYP.
- 7 CONCRETE SHEAR WALL, S.S.D.
- 8 COPING, ZINC, 4 INCHES, TYP. COORDINATE REVEALS WITH ARCHITECT.

LEGEND

- PROPERTY LINE
- ADJACENT BUILDING FOOTPRINT
- ELEVATION
- BUILDING SECTION
- WALL SECTION
- DETAIL & SHEET NUMBER