

GLEN CANYON RECREATION CENTER PUBLIC ART PROJECT OUTLINE



AERIAL VIEW

BUILDING DESIGN & CONSTRUCTION
S.F. DEPARTMENT OF PUBLIC WORKS
ARCHITECTURE

Glen Canyon Rec Center
DEC 2013

PERSPECTIVE

BACKGROUND (CAPITAL IMPROVEMENT PROJECT OVERVIEW)

Recreation & Parks Department (RPD) are undertaking a capital renovation of the Glen Canyon Recreation Center, funded by the 2012 Clean and Safe Neighborhood Parks Bond. The redevelopment will include an auditorium, a multi-purpose room, a culinary garden, a teaching kitchen, an active recreational space and classrooms.

ART OPPORTUNITIES

There are a variety of art opportunities at this site and no one artwork location has been predetermined. The artwork could respond to the natural environmental features of the site, such as Islais Creek, the geography of the canyon or the trail system, or other natural phenomenon. The community has expressed a desire for the artwork to enhance or be integrated within the natural

environment. The site also has a rich history (it has been at differing times, both a zoo and a dynamite factory). It is possible that an artist may take these diverse histories into account. The selected finalists for the project will have the chance to meet with the design team and community stakeholders and then develop an artwork proposal for the location that best suits their artistic approach.

PROJECT GOAL

The project goal is to commission a signature artwork in association with the renovation of the Glen Canyon Recreation Center, which highlights the site's natural environmental attributes or reflects its unique history.

PROJECT BUDGET

The total art enrichment budget is \$150,000. The high level project budget breakdown is as follows:

- Admin Fee - \$30,000
- Selection Costs - \$3,800
- Conservation - \$7,500
- Artwork (including installation) - \$98,700
- Signage and Documentation - \$2,500
- Contingency - \$7,500

ARTIST RECRUITMENT APPROACH AND ELIGIBILITY

Arts Commission staff will select a short list of artists from the 2013/14 Prequalified Artists Pool.

ARTIST SELECTION PROCESS

The list of qualified artists will be presented to the Glen Canyon Project Selection Panel consisting of a representative of the client agency (San Francisco Recreation & Parks), two arts professionals, an Arts Commissioner, a member of the design team, , and a community member. The panel will identify three finalists who will be invited to develop conceptual site specific proposals after attending an orientation session with the project team and key stakeholders. These finalists will be paid an honorarium of \$1,500 (travel reimbursement inclusive) for development of a proposal.

The Glen Canyon Project Selection Panel will reconvene to consider the finalists' proposals in an interview format and will select one artist and an alternate for the project for recommendation to the Art Commission.

COMMUNITY INVOLVEMENT

- SFAC staff will present an overview of the public art project in conjunction with the CIP presentation to the community in January 2014.
- A community representative will serve on the Project Selection Panel and will participate in the Artist Orientation
- The finalists proposals will be on display for public comment near the project site and on the SFAC website for two weeks prior to the final selection panel meeting
- All selection panels, Visual Arts Committee (VAC) and Commission meetings are open to the public.

TIMELINE (Subject to change)

| | |
|--------------------------------------|--------------------|
| Project Outline Approval (VAC) | December 18, 2013 |
| First Project Artist Selection Panel | Early January 2014 |
| VAC Approval | February 19, 2014 |
| Artist Finalist Orientation | Early March 2014 |
| Finalist Proposals due | Mid April 2014 |
| Final Project Artist Selection Panel | Early May 2014 |

VAC Approval
Arts Commission Approval
Artist under Contract

May 21, 2014
June 2, 2014
July 2014

FURTHER INFORMATION

Contact Justine Topfer, Public Art Project Manager at (415)252-2584 or by email at Justine.topfer@sfgov.org.

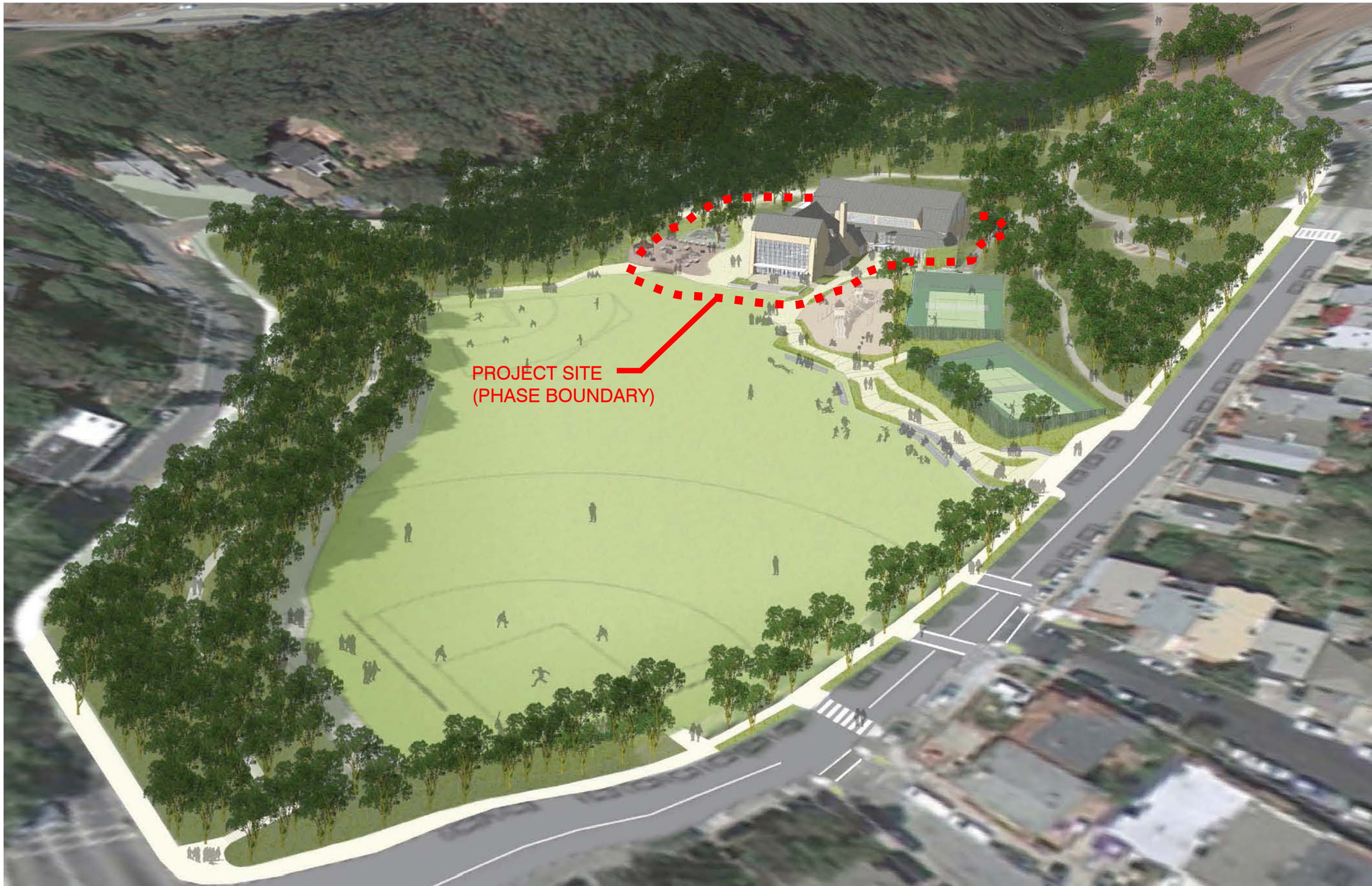
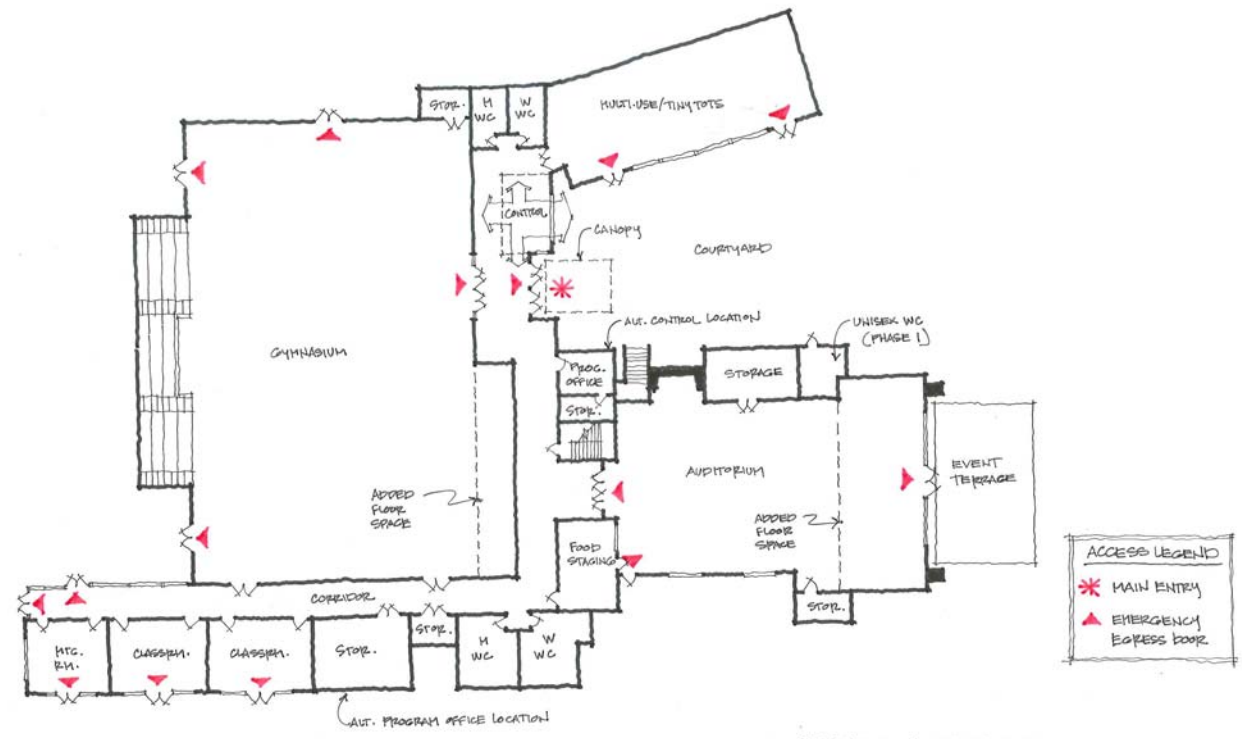


IMAGE BY PAGE & TURNBULL



SITE PLAN



RECREATION CENTER - PREFERRED RE-USE ALTERNATIVE
10231 - 04.04.11 - 1120 - PAGE 1 TURNBULL



PERSPECTIVES



ACTIVE RECREATIONAL AREA

IMAGES BY PAGE & TURNBULL



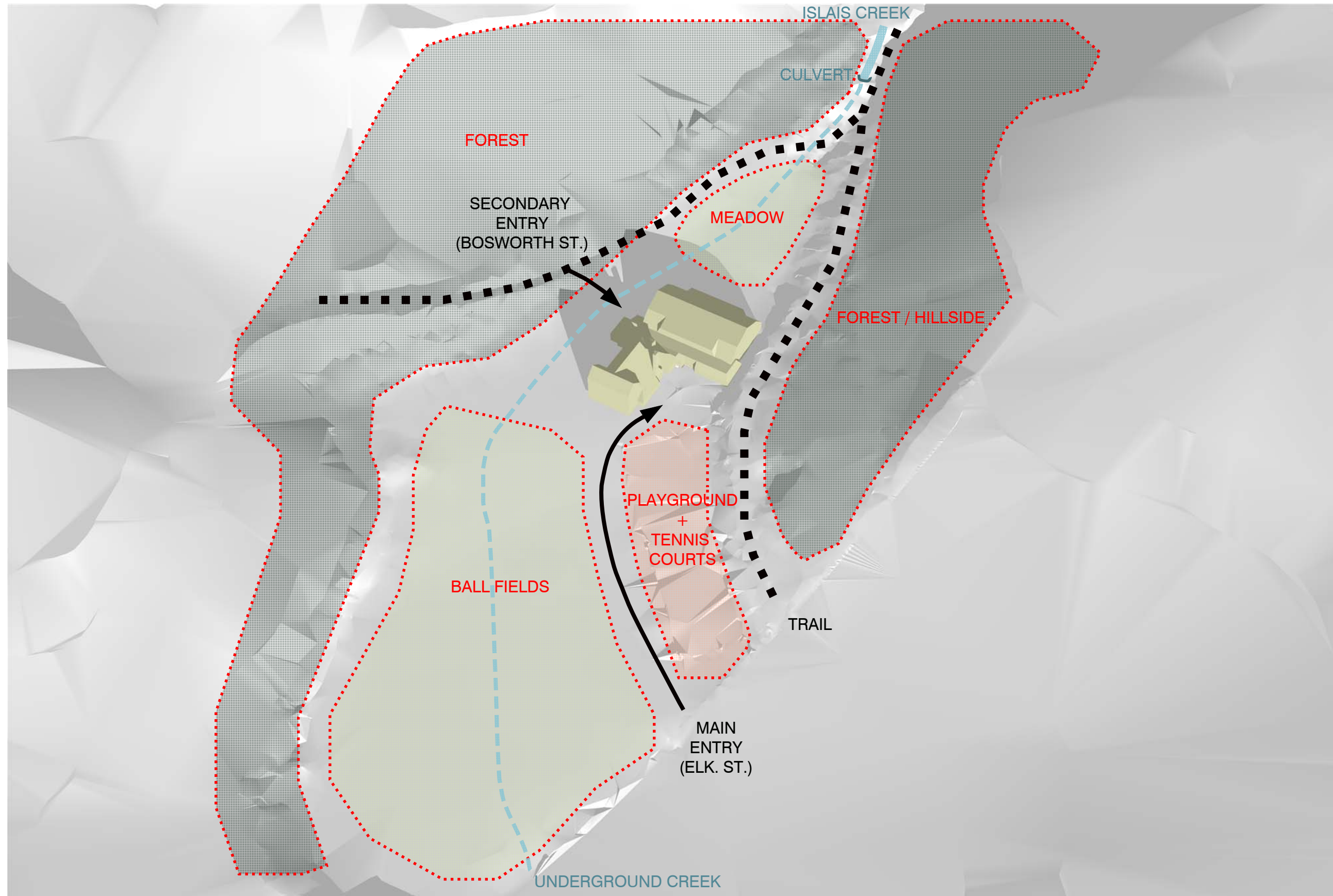
MAIN ENTRANCE - EXISTING PHOTO

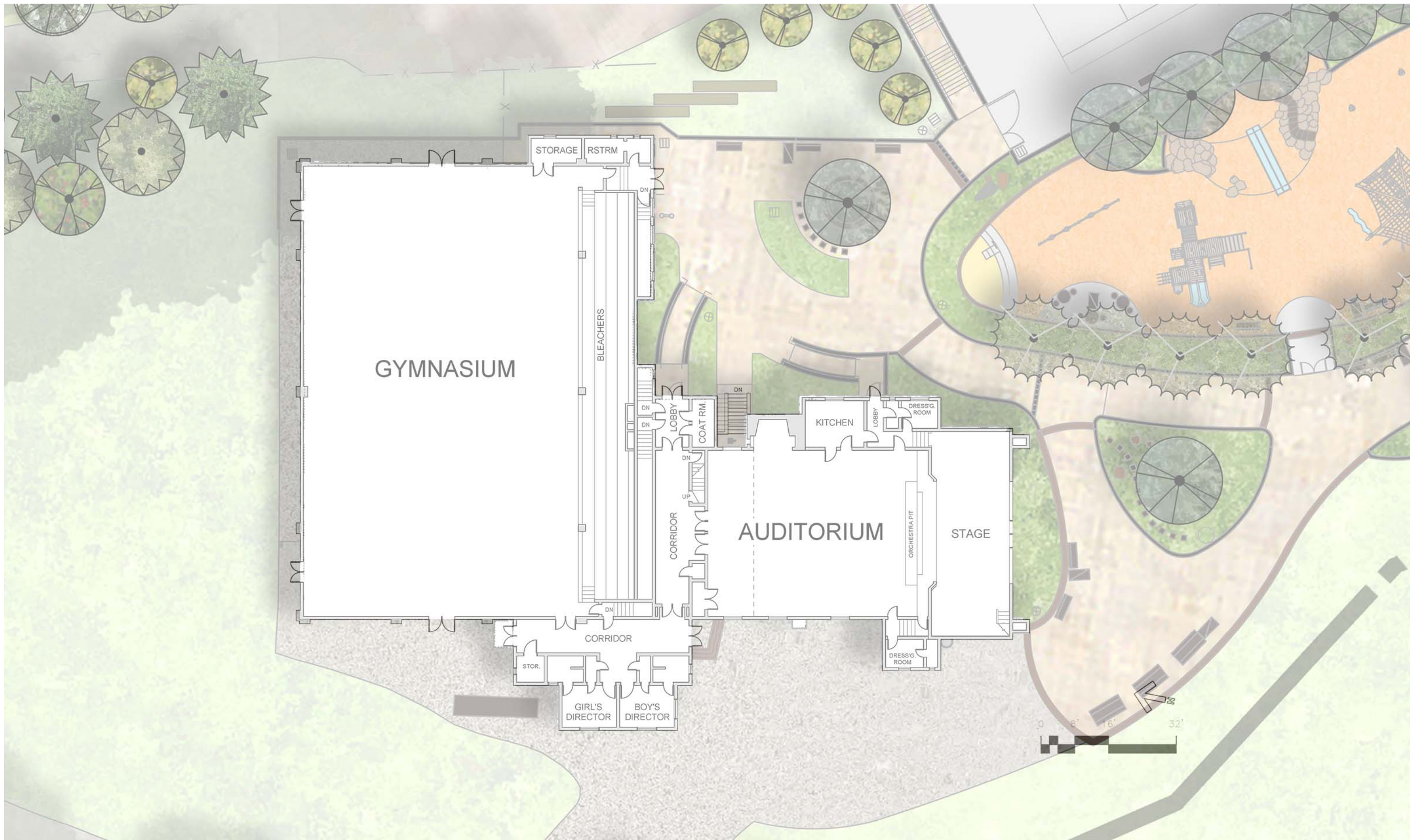


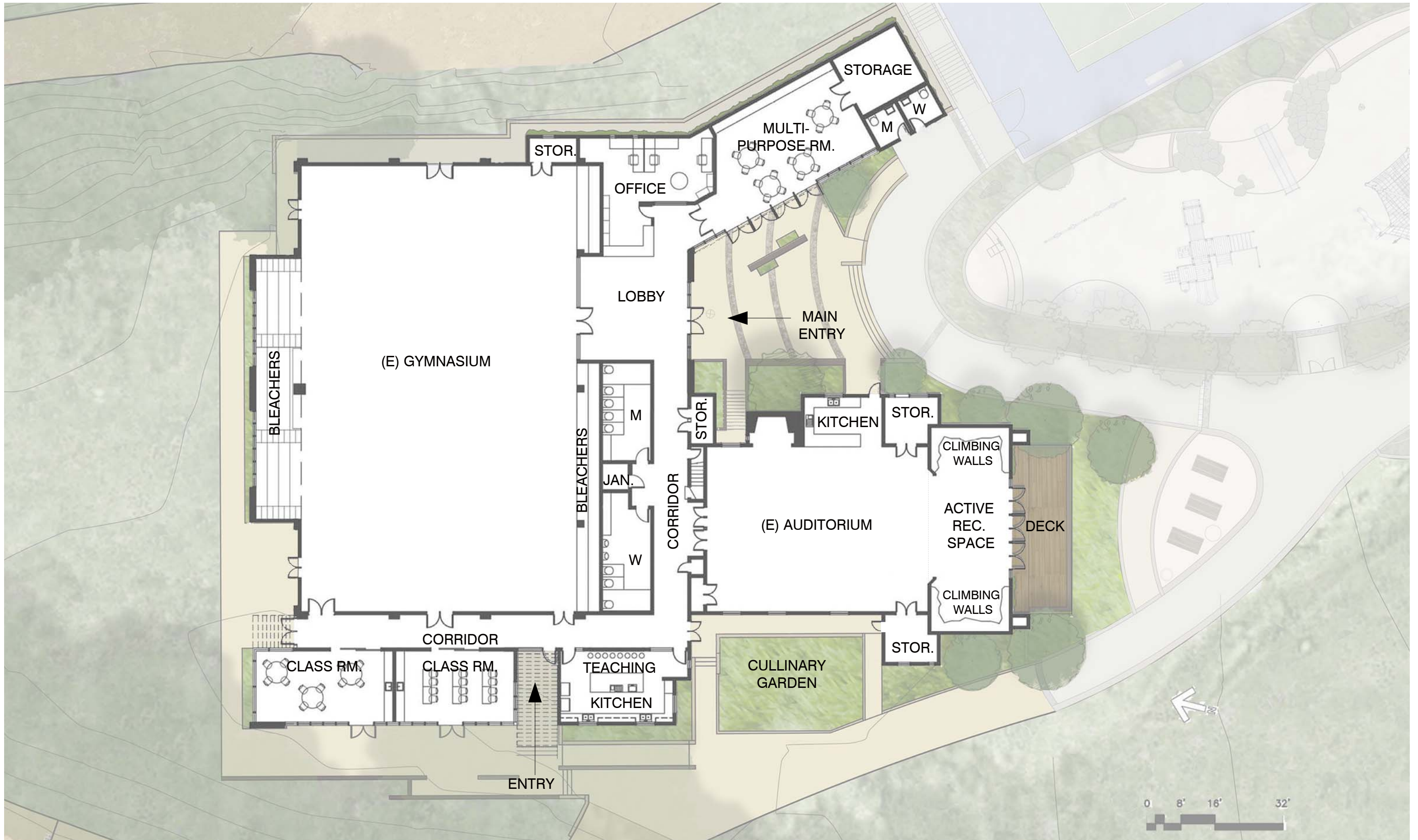
OFFICE WING - EXISTING PHOTO



OFFICE WING - EXISTING PHOTO









VIEW FROM STREET



AERIAL VIEW



VIEW FROM TRAIL