

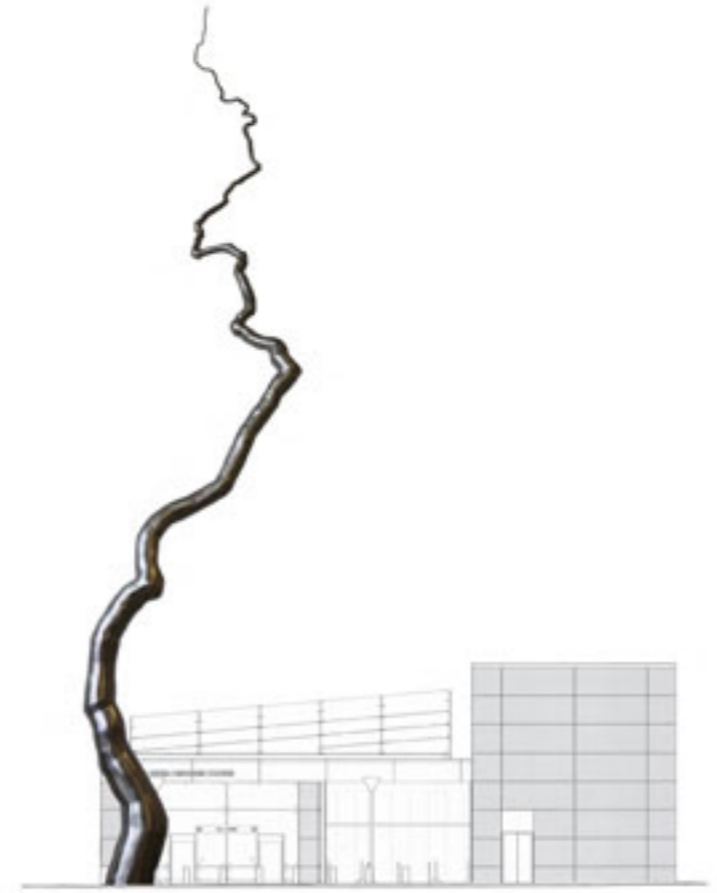
SCULPTURE PROPOSAL FOR THE MOSCONE / YERBA BUENA STATION ENTRY PLAZA

ROXY PAINE

NODE

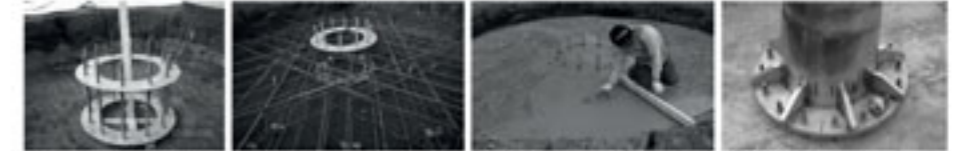
Node is a distillation of a notion of growth, striving, and aspiration, into an essential meandering, searching form, but on a massive scale. It shares with all of the Dendroids a concern with an uneasy translation from an organic language into an industrial language. This node or growth emerges from a confluence in the complex manmade rhizome existing beneath the ground which includes not only the subway system, but also communications, electrical, and water supply and waste systems that are the supply systems and lifelines of our cities. **Node** will function as an elevated marker or signifier to indicate the location of the station from the blocks around the station.

Node is an approximately 110 feet tall Sculpture to be located in a central position in the plaza outside the station. It will be a form that will taper from a diameter of 48 inches at the base to a diameter of 1/4 inch at the peak. **Node** will be an elegant line connecting earth to sky, people to station and sculpture to city.



ELEVATION

SCULPTURE BASEPLATE TO FOUNDATION CONNECTION: METHOD FOR ENSURING BOLTS STAY ALIGNED & PLUMB WHEN POURING CONCRETE FOUNDATION



1 Foundation Preparation of two identical 304/304L stainless steel templates connected by 304/304L stainless steel threaded rods.

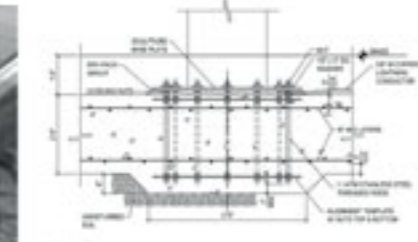
2 Concrete foundation to be designed by local Engineer. Bolts checked for plumb from all directions.

3 Concrete poured into foundation hole.

4 Sculpture baseplate designed with pre-drilled holes to fasten onto threaded rods with stainless steel 304/304L leveling nuts.

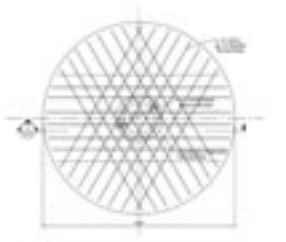


5 Stone finish to be no higher than 6" from top of baseplate.



SECTION

6 Sample of a foundation design.



PLAN

TECHNICAL INFO



PERSPECTIVE VIEW