

INTRUDE

*“Imagine if an artist could take all the magic out of their paintings and transplant it into the real world where you get to experience it, not on a flat canvas, but all around you.*

*That is precisely what Australian artist, Amanda Parer, has done.”*

[ Scenester, Australia ]



*"Intrude is a set of five massive inflatable rabbits intended to give visitors the feeling of being unusually small, not small in the insignificant sense, but in an Alice's Adventures in Wonderland kind of way."*

[ Curbed, USA ]





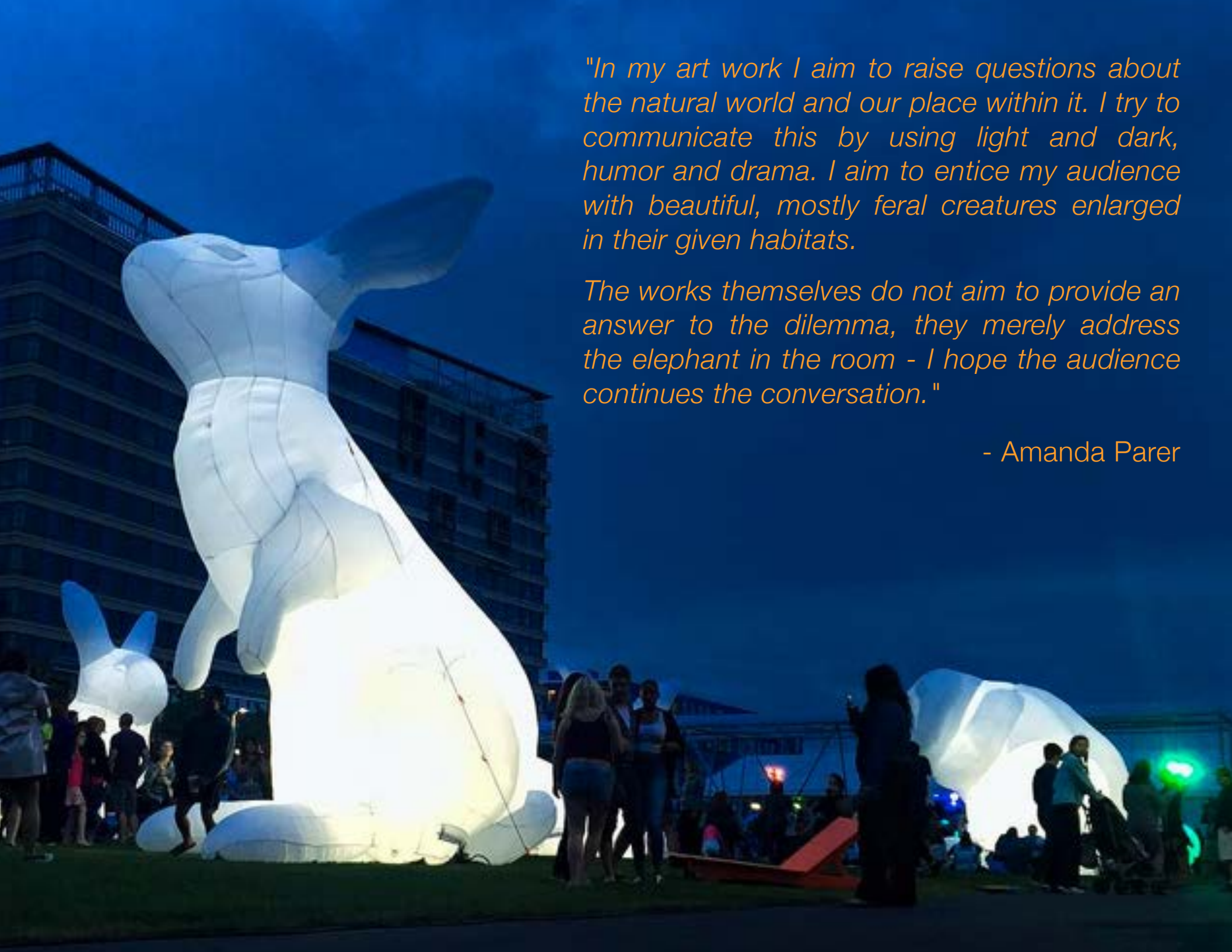
Intrude is a mass-scale public installation by Tasmanian artist Amanda Parer. Created in 2014 for Australia's Vivid Festival, the work has traversed three continents creating widespread delight around the world.











*"In my art work I aim to raise questions about the natural world and our place within it. I try to communicate this by using light and dark, humor and drama. I aim to entice my audience with beautiful, mostly feral creatures enlarged in their given habitats.*

*The works themselves do not aim to provide an answer to the dilemma, they merely address the elephant in the room - I hope the audience continues the conversation."*

*- Amanda Parer*







*“Intrude brought all kinds of people together in unprecedented numbers, and in unprecedented ways.*

*These giants created an instant celebratory vibe - People from all over the city gathered...it was like a holiday!*

*What’s more it proved that art can transform public space, unite audiences and create community.”*

[ Kate Gilbert, artLAB Boston ]








*“Accessible with their familiar forms and soft surfaces, the rabbits are expertly crafted... At a monumental scale, their gestures of preening, standing on their hind legs and laying down took on a life of their own.*

*Whether you approach the giant rabbits of Amanda Parer as archetypal fertility objects or larger than life cartoon characters that sprang to life from a Beatrix Potter novel, there is something very compelling about the sculptures that resonates with audiences on a global scale...”*

[ The International Sculpture Center ]





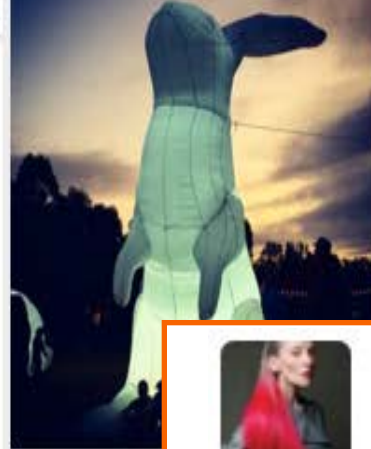
Rabbits were introduced by Europeans to Australia in the mid-18th century. In much the same way that white settlers impacted the county's indigenous populations, rabbits "intruded" on the natural landscape. Every year these furry little creatures cause millions of dollars in crop damage and wreak havoc on the continent's natural environment.


This installation of monumental rabbits embraces both the light, fun-filled side of these creatures, and the darker overtones that their existence implies. "Intrude" is a way of bringing serious environmental concerns into public space to kick-start civic dialogue and thoughtful engagement.





(Intrude is extremely social)



 **graupel X @guiltyx · Sep 16**  
 Flooding my feeds w/ giant inflatable bunnies pix...

ustefestuge  
 mponerer stadiu i havparken, hvor og dig  
 eden da hvide bunnier kys og  
 #amandaparer #intrude #kæmpekaniner  
 #marple  
 urde blive  
 #indsa'ling  
 #nare @mettesinnbeck  
 sand

hey, have you seen  
 zacharykingsley  
 #looneytunes #elmerfudd #quote #rabbit  
 wheream\_j\_la  
 kirstensoelling



major rabbit / meters by the Australian artist  
 Amanda Parer in Berlin by  
 Aarhusfestuge #amandaparer #intrude #kæmpekaniner  
 sogn23  
 aarhusfestuge



thildesecher  
 #kæmpekaniner #intrude #amandaparer

 **Erika Denise @ErikaDeniseee · Sep 18**  
 If you haven't seen [#intrude @Beakerhead](#) it's magical! I hugged all the bunnies, you should too [#YYC #Beakerhead](#)

oneelisabet



slojfen  
 mielaerkerasmussen  
 Fantastisk!

thildesecher  
 #kæmpekaniner #intrude #amandaparer



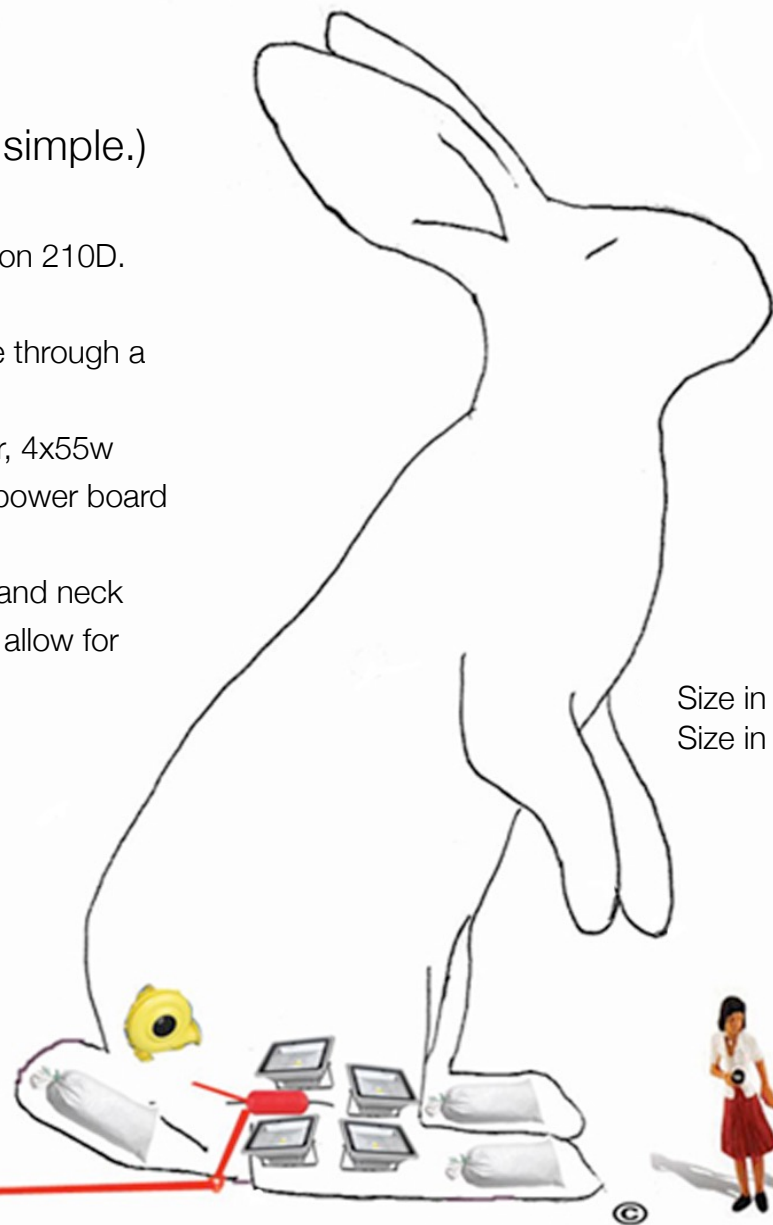
its\_anonymass  
 Cool photos, check out mine sometime  
 tildefv










(Intrude's installation is simple.)

- The inflatable is made from Nylon 210D.
- It is waterproof and fireproof.
- Entry into the inflatable is made through a zipper at its base.
- The interior contains: air blower, 4x55w LED floodlights, weatherproof power board box, 150kg of sandbags.
- D-rings fitted around the base and neck around the neck of each figure allow for tethering.



Size in meters: 7 H x 3 W x 5 L  
Size in feet: 23 H x 10 W x 16 L

KEY

-  Connector to power source
-  Airblower
-  55W LED Floodlight
-  Sandbag
-  Weatherproof Powerboard Box

Scale 1:50



Sydney Visitor Centre

HOTEL

For Booking Information Please Contact:  
Chris Wangro/Zaragunda, Inc.  
[wangro@graceland.net](mailto:wangro@graceland.net)  
(01) 917 714 2046



