



**OFFICE OF THE CHIEF MEDICAL EXAMINER  
PUBLIC ART SELECTION PANEL – EXTERIOR ARTWORK  
MEETING TWO SUMMARY**

**MEETING DATE:**

March 3, 2015

**VOTING SELECTION PANELISTS:**

Greg Chew, Arts Commissioner

Jack Dybas, Project Manager, KMD Architects (sharing vote with M. Ryor)

Amy Ellingson, artist

Stephanie Hanor, Director, Mills College Art Museum

Carrie Lederer, Curator of Exhibitions and Programs, Bedford Gallery

Magdalena Ryor, Project Manager, San Francisco Public Works (sharing vote with J. Dybas)

Brian Stott, Community Representative

Christopher Wirowek, Acting Medical Examiner's Administrator, Office of the Chief Medical Examiner

**PROCESS**

The following artist/artist teams presented an overview of their practice and proposals for the Office of the Chief Medical Examiner exterior public art opportunity:

Roger Berry

Richard Deutch

Living Lenses (Po Shu Wang)

Presentations were followed by discussion and voting.

**VOTING CRITERIA**

The panelists were asked to rank each of the artists and artwork proposals 1, 2, or 3 (1=highest rank) taking into consideration the following criteria:

- Aesthetic quality
- Appropriateness of the proposed artwork for the site and project goals
- Demonstrated feasibility of the preliminary proposal and the proposal budget
- Demonstrated maintainability and durability of the artwork's design, materials, fabrication and installation methods
- Result of reference checks

**RESULTS OF VOTING TALLY**

Richard Deutch	7
Living Lenses (Po Shu Wang)	17
Roger Berry	18

**ARTS COMMISSION APPROVAL**

**Motion:** Motion to approve the selected artist Richard Deutsch and his conceptual proposal for an exterior artwork at the Office of the Chief Medical Examiner, as recommended by the Office of the Chief Medical Examiner Selection Panel.

**Motion:** Motion to authorize the Director of Cultural Affairs to enter into contract with artist Richard Deutsch for an amount not to exceed \$210,000 for design, fabrication, transportation and consultation during installation of an exterior artwork for the Office of the Chief Medical Examiner



**OFFICE OF THE CHIEF MEDICAL EXAMINER  
PUBLIC ART SELECTION PANEL – INTERIOR ARTWORK  
MEETING TWO SUMMARY**

**MEETING DATE:**

March 4, 2015

**VOTING SELECTION PANELISTS:**

Greg Chew, Arts Commissioner

Jack Dybas, Project Manager, KMD Architects (sharing vote with M. Ryor)

Amy Ellingson, artist

Stephanie Hanor, Director, Mills College Art Museum

Carrie Lederer, Curator of Exhibitions and Programs, Bedford Gallery

Magdalena Ryor, Project Manager, San Francisco Public Works (sharing vote with J. Dybas)

Brian Stott, Community Representative

Christopher Wirowek, Acting Medical Examiner's Administrator, Office of the Chief Medical Examiner

**PROCESS:**

The following artist/artist teams presented an overview of their practice and proposals for the Office of the Chief Medical Examiner interior public art opportunity:

Merle Axelrad

Suzy Barnard

Stephen Galloway

Ann Gardner

Presentations were followed by discussion and voting.

**VOTING CRITERIA:**

The panelists were asked to rank each of the artists and artwork proposals 1, 2, or 3 (1=highest rank) taking into consideration the following criteria:

- Aesthetic quality
- Appropriateness of the proposed artwork for the site and project goals
- Demonstrated feasibility of the preliminary proposal and the proposal budget
- Demonstrated maintainability and durability of the artwork's design, materials, fabrication and installation methods
- Result of reference checks

**RESULTS OF VOTING TALLY:**

Ann Gardner	13
Merle Axelrad	17
Suzy Barnard	17
Stephen Galloway	23

To break the tie between Merle Axelrad and Suzy Barnard, the panel ranked 1 or 2 (1=highest rank)

Merle Axelrad	10
Suzy Barnard	11

**SUMMARY OF DISCUSSION:**

The client representative on the panel, Mr. Wirowek, expressed great concern about the highest ranked proposal by Ann Gardner. He stated that staff felt that while it was a beautiful artwork, it was not appropriate as the entry piece to the office.

**ARTS COMMISSION APPROVAL:**

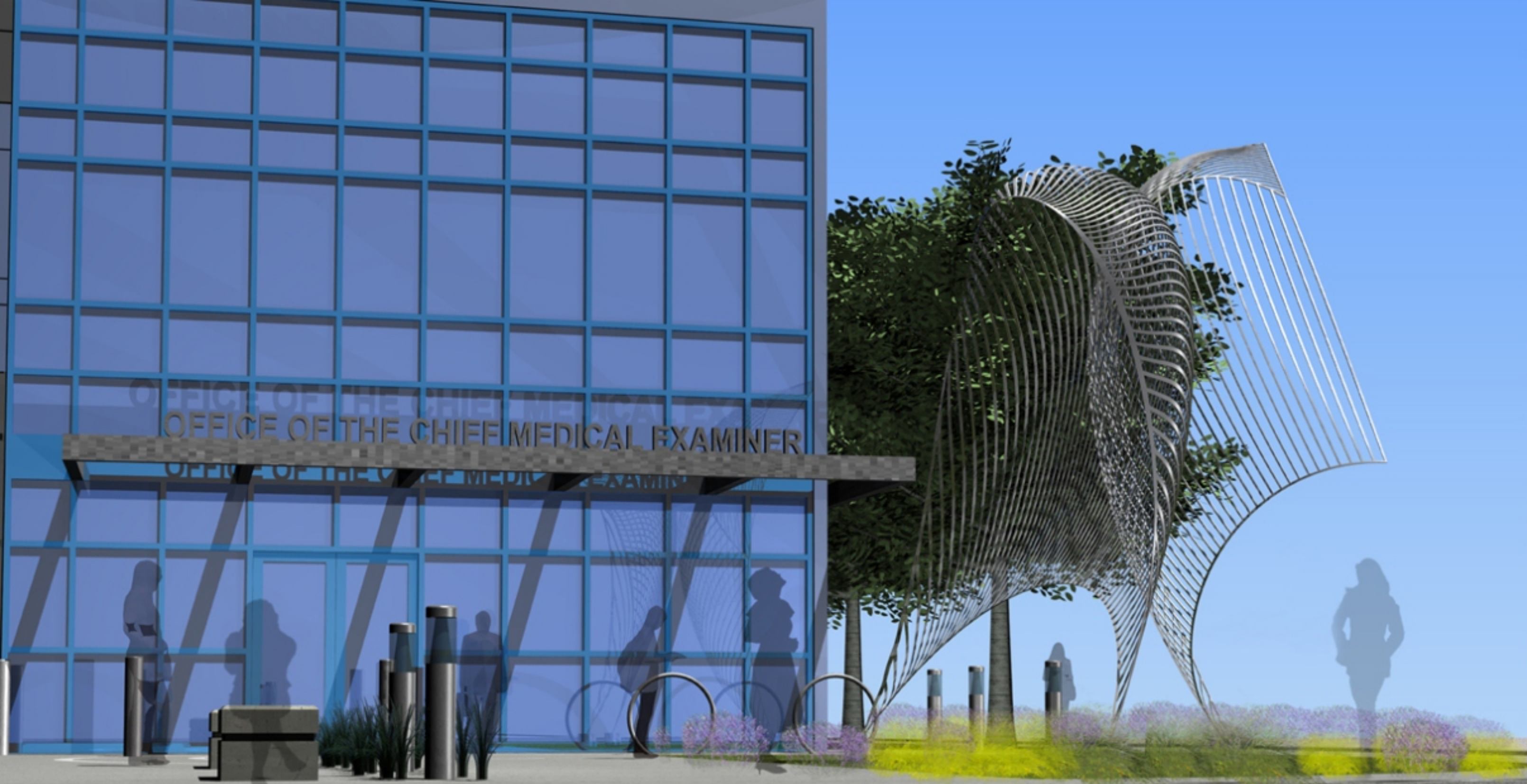
**Motion:** Motion to approve the selected artist Ann Gardner and her conceptual proposal for an interior artwork at the Office of the Chief Medical Examiner, as recommended by the Office of the Chief Medical Examiner Selection Panel.

**Motion:** Motion to authorize the Director of Cultural Affairs to enter into contract with artist Ann Gardner for an amount not to exceed \$75,000 for design, fabrication, transportation and consultation during installation of an interior artwork for the Office of the Chief Medical Examiner.

**OR**

**Motion:** Motion to reject all proposals for an interior artwork at the Office of the Chief Medical Examiner.





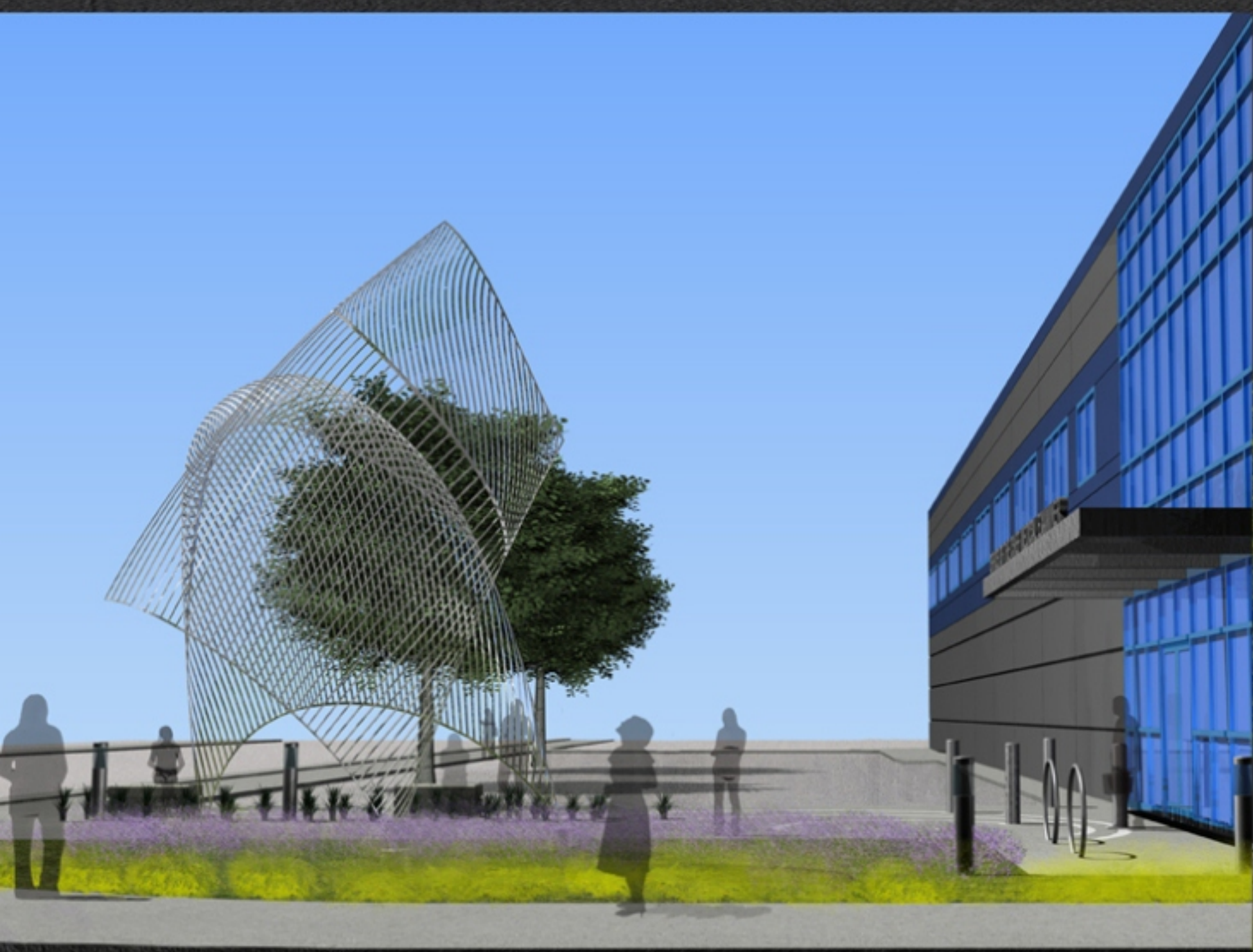
**Alma**  
Between 1850 and the early years of the 20th century, the best highways around the San Francisco Bay Area were its waterways. A hundred years ago, India Basin was a bustling harbor and shipyard. The many scow schooners built at Hunter's Point Dry Docks shuttled hay, produce, and supplies around the bay. Born at Hunter's Point Shipyard, Alma is the last local scow schooner afloat, and is the oldest documented vessel on the west coast still certified to carry passengers.

Alma is a flat-bottomed scow schooner built in 1891 by Fred Siemer at his shipyard at Hunter's Point. The vessel was named after his daughter. The proposed sculpture for the Office of the Chief Medical Examiner directly appropriates the name of the vessel, Alma, in tribute to this vital and rich boat building past.



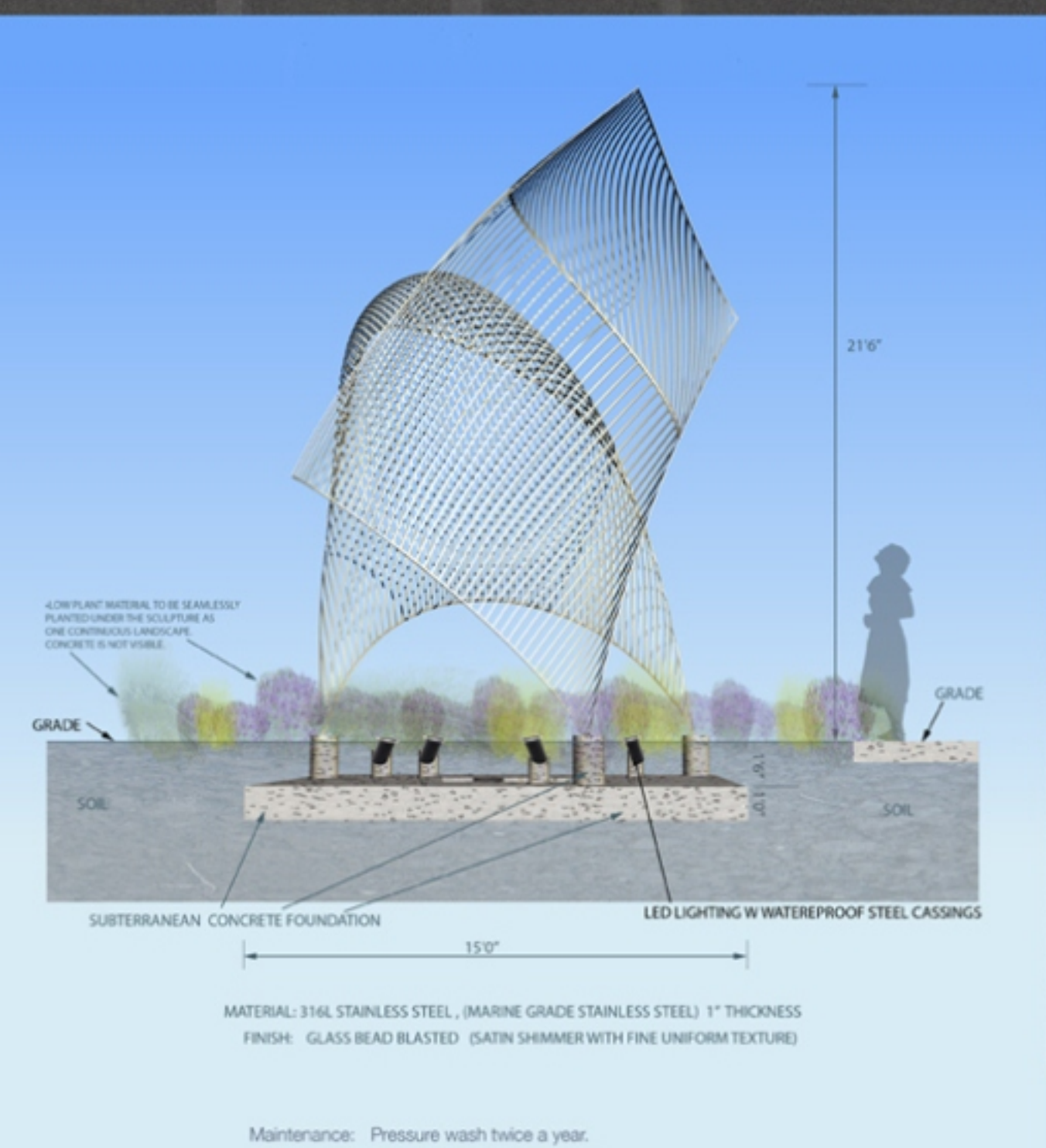
Art Proposal for an Exterior Sculpture  
at The Office of the Chief Medical Examiner Building  
RICHARD DEUTSCH

*Alma*



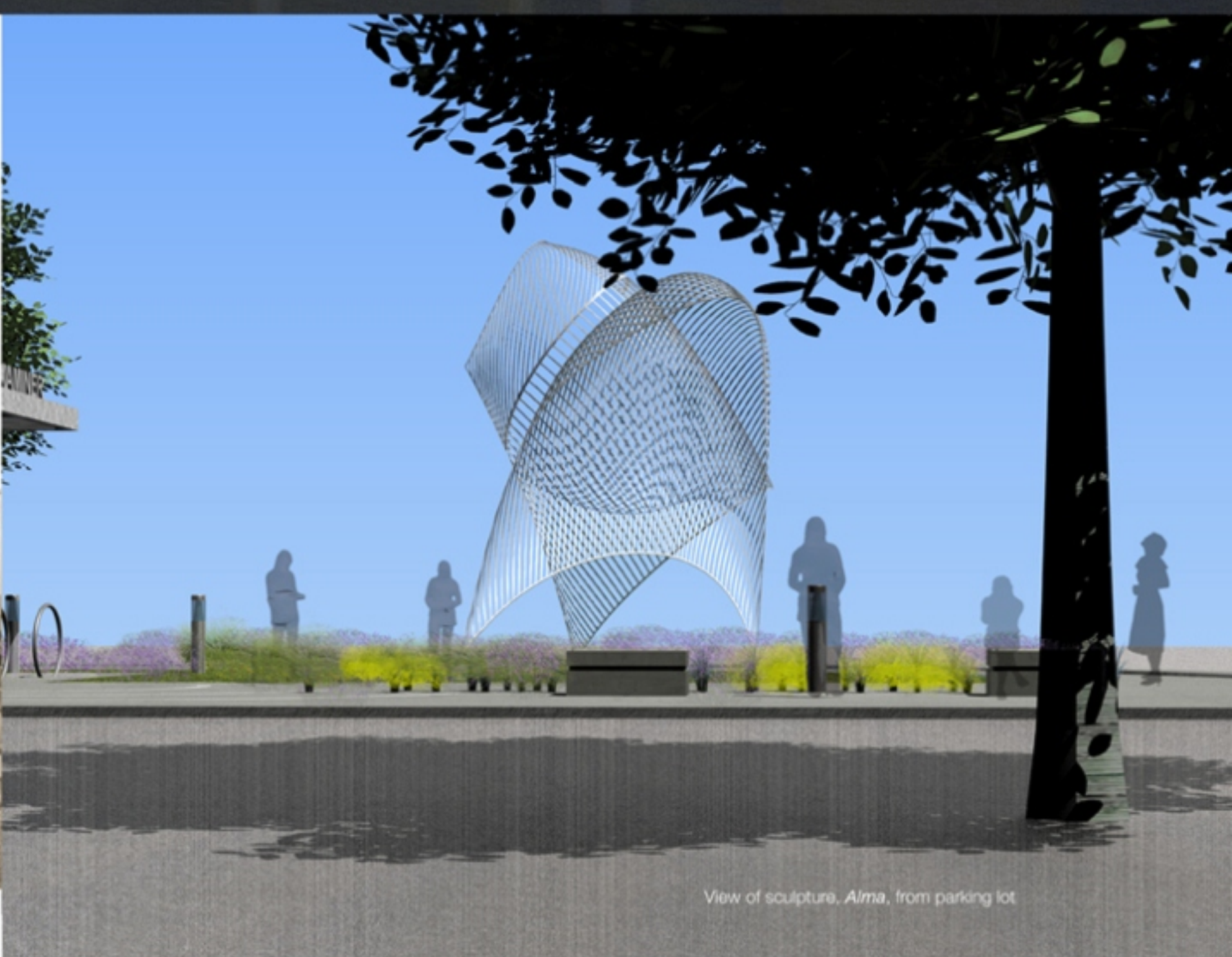
For centuries, the joyful vision of billowing sails on the San Francisco Bay has been a delight to its residents and visitors. In fact, the great Seal of the State of California, c. 1849, depicts sailboats on the San Francisco Bay symbolizing economic strength and societal wellbeing. Moving forward, sails seen out on the bay represent a sense of freedom, tranquility, a lust for life, and a vitality that are characteristic of the people of San Francisco. The proposed sculpture, *Alma*, symbolizes these attributes.

The Office of the Chief Medical Examiner Building is open day and night. At night, LED lights will project a soothing soft amber color, lighting the shimmering stainless steel sculpture.



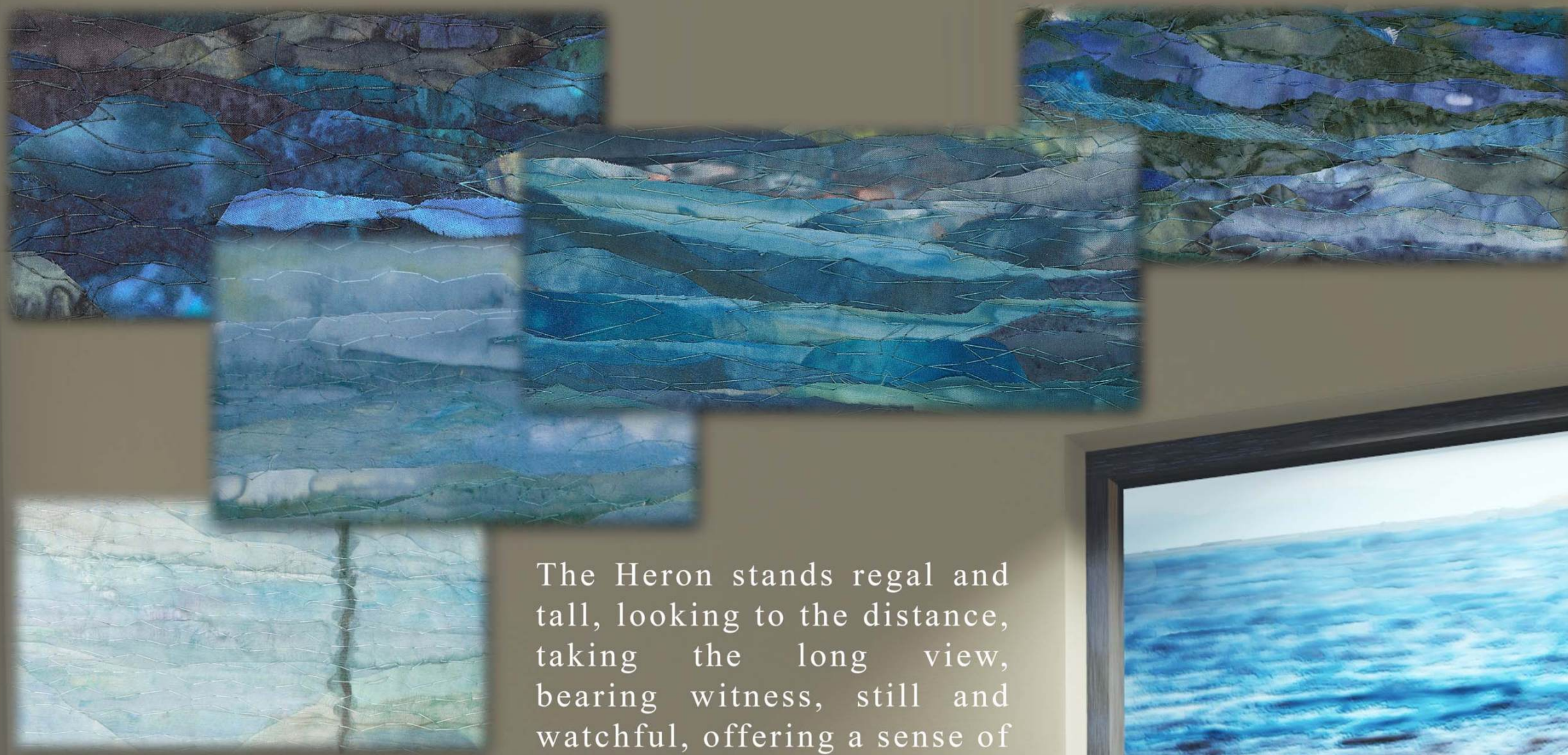
*Alma*, the proposed sculpture for the Office of the Chief Medical Examiner at India Basin, celebrates India Basin's rich boat building past while providing a lasting symbol for its promising and ambitious future. The sculpture, *Alma*, abstractly represents full sails as they assume form by the force of the wind: uplifting, dynamic, dramatic, and soothing. *Alma* is meant to be a landmark that will punctuate the upper end of India Basin while serving as a beacon for the Office of the Chief Medical Examiner.

INDIA BASIN SURVEY  
SAN FRANCISCO, CALIFORNIA



View of sculpture, *Alma*, from parking lot





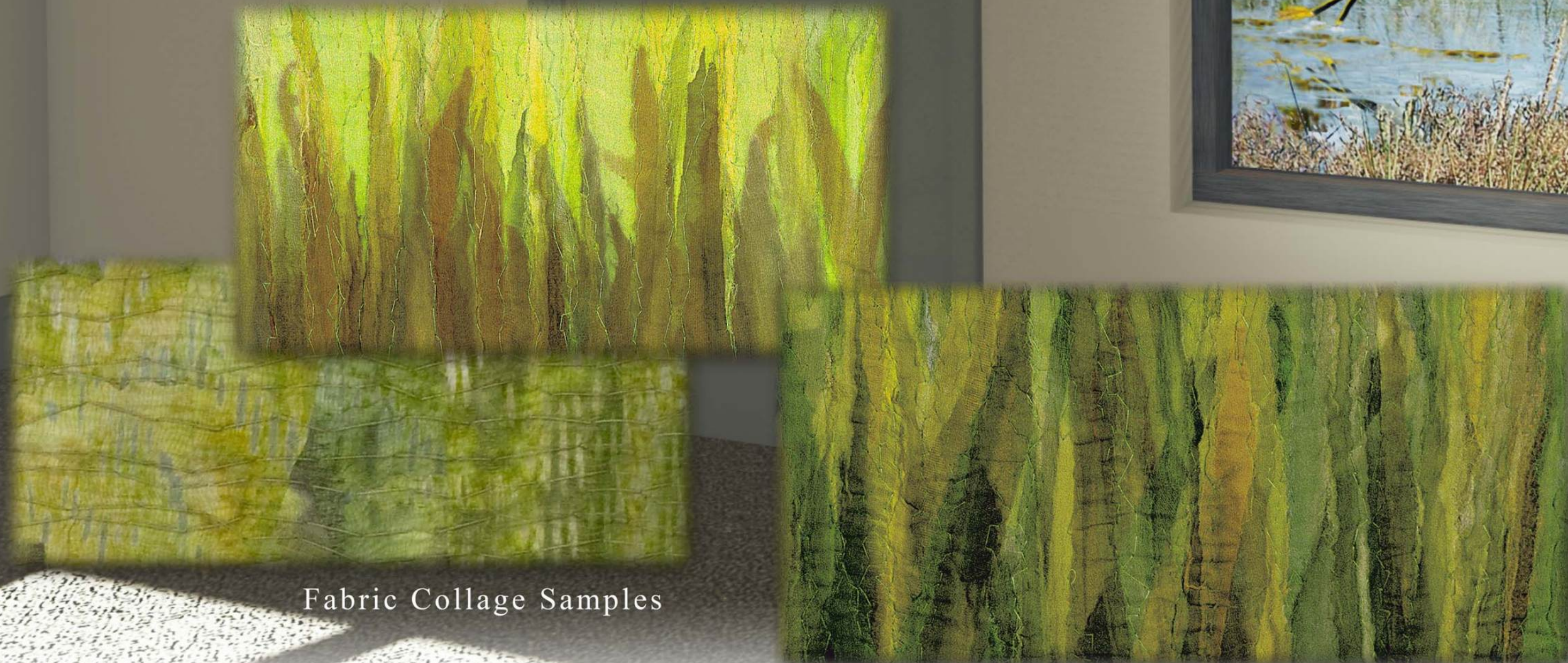
The collages are created from thousands of tiny pieces of fabric, each thoughtfully selected to make its individual contribution. Fragments of woven color and texture are carefully arranged, layered, pinned and sewn.

The Heron stands regal and tall, looking to the distance, taking the long view, bearing witness, still and watchful, offering a sense of peace and protection.

He is *The Sentinel*.



Pieces of fabric act like little three dimensional brush strokes. They are secured in place with stitching. The resulting textured surface bounces light in all different directions, making the work seem to glow and sparkle with a light from within.

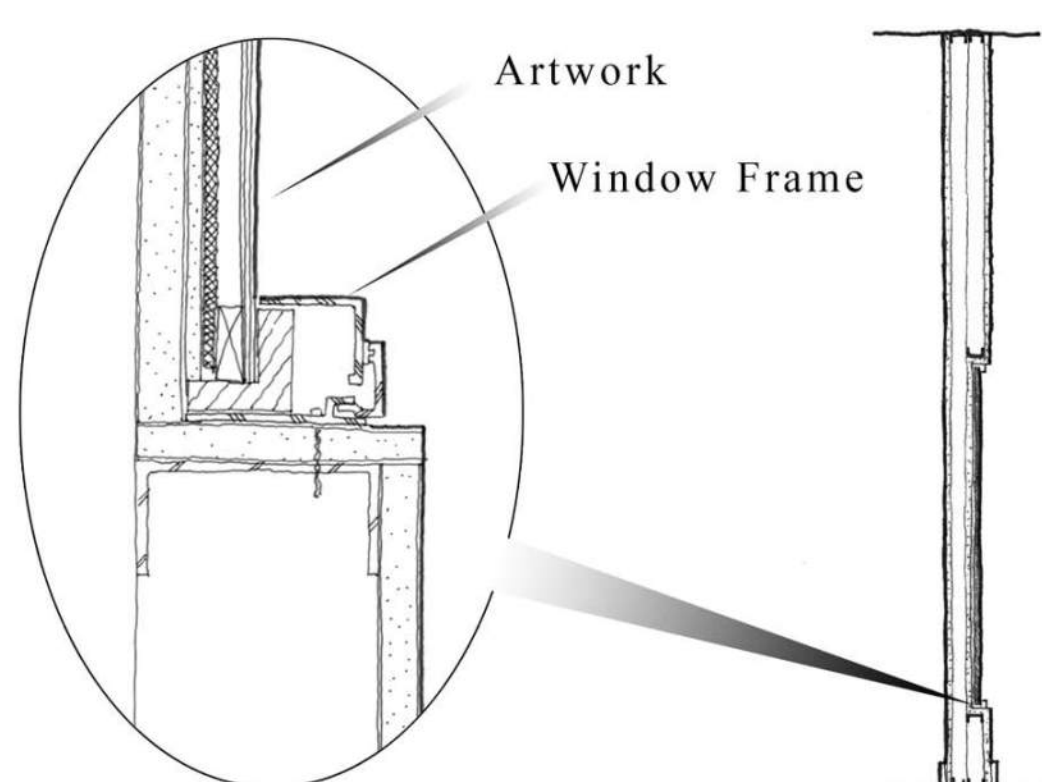


Fabric Collage Samples

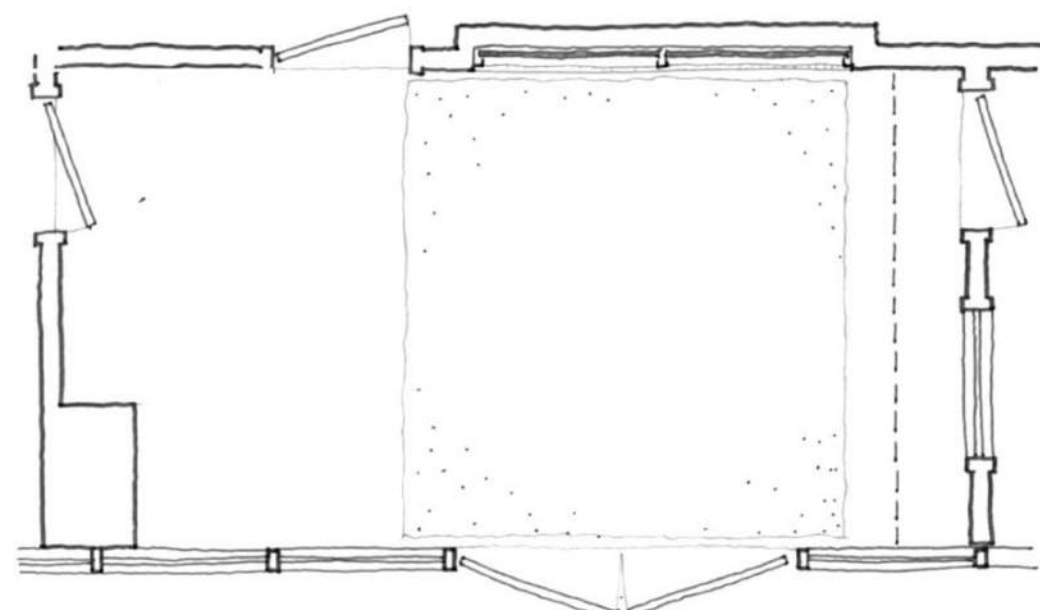
# MERLE AXELRAD

## FABRIC COLLAGE

Art Proposal for an Integrated Artwork at the Office of the Chief Medical Examiner Building



Artwork expands the shallow entry. Two collages, each 93" high and 42" wide, are recessed into a niche, framed to match the building's windows, creating a view of the nearby salt marshes.



*The Sentinel* is a diptych of two fabric collages. The viewer looks through a window, to a place of life, transition and reflection.

Merle Axelrad's fabric collages provide a sense of calm, peace and tranquility to public and staff. One is drawn from a place that focuses on death to a place that is all about life.

The salt marshes of India Basin, just beyond this building, are among the most productive ecosystems on earth, alive and active, brimming with life. Eleven million birds travel the Pacific Flyway. Seventy percent visit the Bay's salt marshes. It's a life-affirming cycle of migration.

Transitioning from ocean to land, salt marshes ebb and flow with the tide. Grasses, birds and sky reflect in the shallow waters. This building echoes that changing environment - a place of transitions and reflections.



SUZY BARNARD

PROPOSAL FOR AN INTEGRATED ARTWORK  
AT THE OFFICE OF THE  
CHIEF MEDICAL EXAMINER BUILDING  
1 NEWHALL STREET, SAN FRANCISCO, CALIFORNIA

A large vibrant oil painting depicting a tranquil seascape will be mounted within the niche on the wall of the Visitor’s Service Center, facing the entrance to the Office of the Chief Medical Examiner’s building.

Inspired by the views from the artist’s studio on the waterfront near by, this seascape will feature scattered cargo ships floating in the far distance and will have an impressionistic, abstract feel. The artist’s main objective will be to use color, light and gesture to create an emotionally uplifting and serene atmosphere. By featuring the Bay and all its shimmering colors, this artwork would offer visitors to this building a window to something powerful yet positive, a place to travel peacefully through blues and greens within the mind’s eye and reinforce a sense of connectedness to our environment.

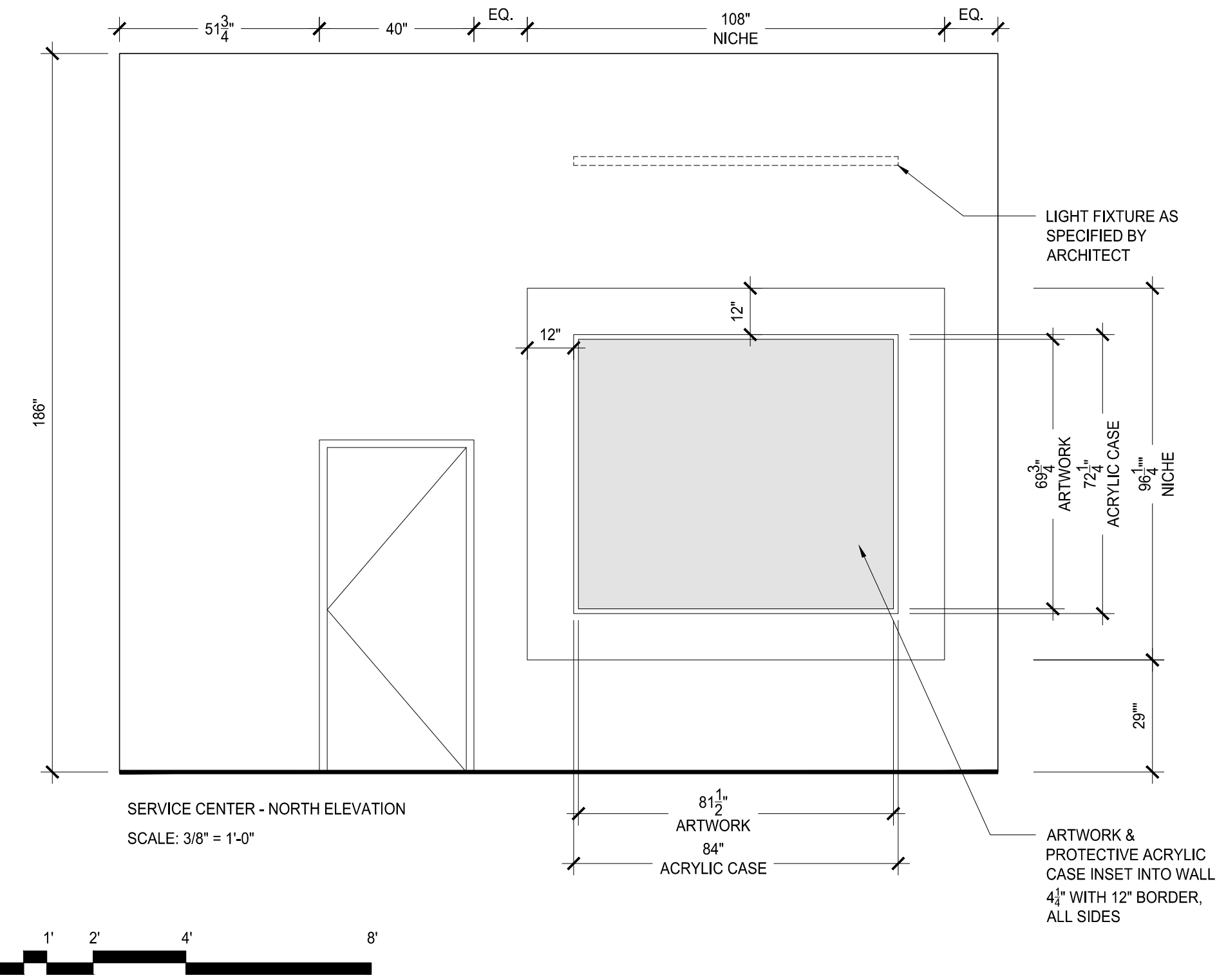
The painting will be protected by a clear acrylic case.



This rendering represents a view of the Visitor’s Service Center as seen from the main entryway. The painting is a simulated rendition of the artist’s intended composition and color scheme. The walls will all be a creamy neutral white, specified by the architect. Floors and doors will be neutral gray/earth color. A lighting fixture, to be specified by the architect, will be suspended from the ceiling, washing an even light over the entire niche area.

The artwork will be protected by a non-reflective case, made from TruVue Optium Museum Acrylic® , which when viewed head-on will be barely visible. The case will be attached to the painting by means of a sturdy clear acrylic backing, and hung with a cleat system to the wall.

The painting itself will be oil on canvas, stretched over wood panel. The edges of the canvas will be visible and unframed, and will be painted to blend with the colors of the canvas.



Close-up samples of paintings to illustrate color palette, paint surface and imagery.



"Far and Wide", 48"x74", oil on wood, Suzy Barnard© 2013



"Dancing with Emerald", 2014, 36"x 68", oil on wood panel, Suzy Barnard © 2014

These paintings demonstrate a similar theme and composition as intended for this artwork proposal. Artist will integrate blues and greens more vibrantly in the foreground, becoming more muted and hazy as distant shoreline and hills recede. Far away cargo vessels will be visible in the upper third of the composition.



# STEPHEN GALLOWAY ESMEN DREAM

Art Proposal for an Integrated Artwork at the Office of the Chief Medical Examiner Building



inspiration and typical elements for the composition

*Esmen Dream* introduces a natural view into the Office of the County Medical Examiner. The artwork creates a landscape to invoke a sense of place and peace. The title, *Esmen Dream*, uses the Ramaytush word for 'sun' to refer to the people who settled the Mission Creek and Islais Creek watersheds near the OCME site. The landscapes that were familiar to these natives of San Francisco would have been the same as the places we look to for inspiration today. In fact, vestiges of this landscape still peek through along the industrialized bayfront where OCME will be housed.

*Esmen Dream* is a 80" x 70" photographic image in 2 panels. It is created by encapsulating printed film between a clear glass face and a white glass back. The panels, 80" x 34" each, are separated by a 2" gap, and floated in a specially designed niche on the wall opposite the OCME entry. The artwork, composed from a variety of image sources, highlights light, life, peace and balance in order to:

- Create a living and nurturing welcome to clients of the Chief Medical Examiners' Office
- Reduce the likely anxiety and stress of bereaved visitors.
- To create a sense of space and life within the closed entry lobby and activate an otherwise



perspective rendering showing *Esmen Dream* located in niche opposite entry to OCME



draft composition for *Esmen Dream*



# ANN GARDNER

ARTIST PROPOSAL for an Integrated Artwork  
at the Office of the Chief Medical Examiner Building

As I considered how to create an appropriate artwork for this entry, I realized the most important element is the audience -- people who work in the Building as well as the visitors. In this case, what would people want to see? -- something beautiful, something quiet.

My proposal is to create two 4' wide by 13' tall panels composed of small, hand-cut reflective colored glass pieces, sitting side by side in the niche, each panel surrounded by a blackened stainless steel frame. The glass is backed with metal leaf and set to be slightly less than flush with the edge of the frame, protecting the glass from any bumps to the panel.

These panels speak to time, to the changing light of day into night and night into day, to the journey we all make from one day to another that continues into a lifetime.

One panel will be primarily gold with a hint of blue at the bottom. The other panel will be composed of gray blues with a hint of gold at the bottom. The light from the front windows will constantly move across the piece and the metal leaf will reflect the light through the colored glass, often glowing. In the evening the panels will appear quite differently but equally beautiful as the low light from the evening reflects in a different way.

It is a quiet piece for a quiet place but never static, always subtle and beautiful, speaking to a simple idea -- the passage of time in our lives.



## PROPOSED COLORS

	HS 120° Blue		SP 425-1 Dark Navy Blue
	HS 100° Blue		HS 100° Blue
	SP 101° Aluminum		HS 100° Blue
	Dark 100° Blue		HS 100° Blue
	Dark 100° Blue		HS 100° Blue
	HS 100° Blue		HS 100° Blue
	HS 100° Blue		HS 100° Blue
	HS 100° Blue		HS 100° Blue
	HS 100° Blue		HS 100° Blue
	HS 100° Blue		HS 100° Blue



The artwork will be installed in the  
Office of the Chief Medical Examiner  
Building, 100° Blue, Project: 100° Blue  
Project: 100° Blue