



## Golden Gate Park Reservoir and Pump Station

Civic Design Review Phase 3 | September 28, 2015

BUILDING DESIGN & CONSTRUCTION  
S.F. DEPARTMENT OF PUBLIC WORKS



# Golden Gate Park Reservoir and Pump Station - Site Analysis & Design

## Existing Site Analysis:

The Recycled Water Storage Reservoir and Pump Station will be located in the existing compost facility of Golden Gate Park. The proposed underground reservoir and above ground pump station will be located immediately east of the existing Central Pump Station and Underground Reservoir Numbers 1 & 2. The new and old reservoirs will be linked so that recycled water is used in all three reservoirs for irrigation. The new pump station supplies recycled water to the Presidio and Lincoln Park. The existing pump station supplies water to Golden Gate Park. Composting will occur on top of the underground reservoir and next to the pump station. The composting yard is screened by trees from public view.

GGP Compost Yard factors and activities that will have a direct effect upon the reservoir and pump station design include:

- Heavy equipment operations, including bulldozers, loaders, large dump trucks, trump and branch shredders, mixers, tractor trailer rigs, and other heavy equipment.
- Stockpiling of sand, straw and manure, trimmings and wood chips, and miscellaneous debris of broken concrete, boulders, and aggregates.
- Severe localized dust, sawdust, and blowing sand conditions.

## Changes Since Phase 2 Submittal:

1. Proposed Green Color for New Pump Station was eliminated. Walls will be Natural Concrete.
2. Added Landscape to Screen Yard at Relocated Entrance Gate.



**Phase 3 Submittal - Changes Since Phase 2:** Eliminate Green Color for Walls & Leave Walls Natural Concrete



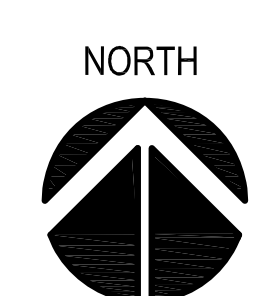
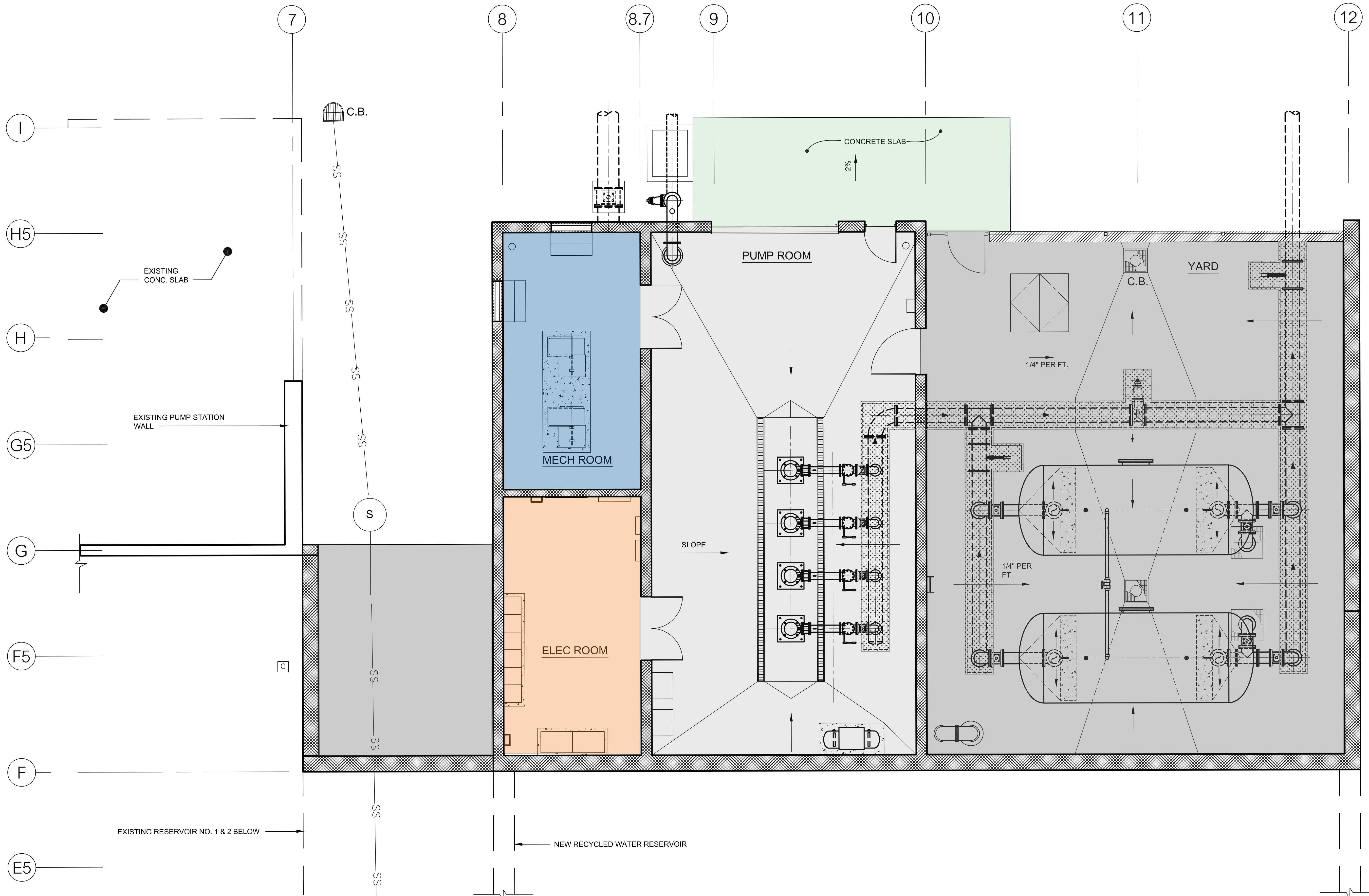
North West Perspective





North West Perspective







Phase 3 Submittal - Changes Since Phase 2: Added Landscape to Screen Yard at Relocated Entrance Gate.

PLANT LIST AND LEGEND

	SYMBOL	BOTANICAL NAME	COMMON NAME	SIZE	QUANTITY	SPACING
TREES/LARGE SHRUB	CEA RAY	CEANOTHUS 'RAY HARTMAN'	RAY HARTMAN WILD LILAC	15 GAL	6	AS SHOWN IN PLAN
	LYO FLO	LYONOTHAMUS FLORIBUNDUS	IRONWOOD	15 GAL	2	
	QUE AGR	QUERCUS AGRIFOLIA	COAST LIVE OAK	15 GAL	5	
	SAM MEX	SAMBUCUS MEXICANA	MEXICAN ELDERBERRY	5 GAL	6	
SHRUBS	ART PYC	ARTEMISIA PYCNOCEPHALA	BEACH SAGEWORT	1 GAL	77	36" ON CENTER
	ATR LEN	ATRIPLEX LENTIFORMIS	BREWER'S SALT BRUSH	5 GAL	20	42" ON CENTER
	LUP ARB	LUPINUS ARBOREUS	BUSH LUPINE	1 GAL	53	36" ON CENTER
	RHA CAL	RHAMNUS CALIFORNICA	COFFEE BERRY	5 GAL	56	36" ON CENTER
	RIB SAN	RIBES SANGUINEUM	FLOWERING CURRANT	5 GAL	22	42" ON CENTER

4" DEPTH BARK MULCH

ABBREVIATION: GAL = GALLON CONTAINER

EXISTING TREE

