

Motions to Approve and Accept into Civic Art Collection

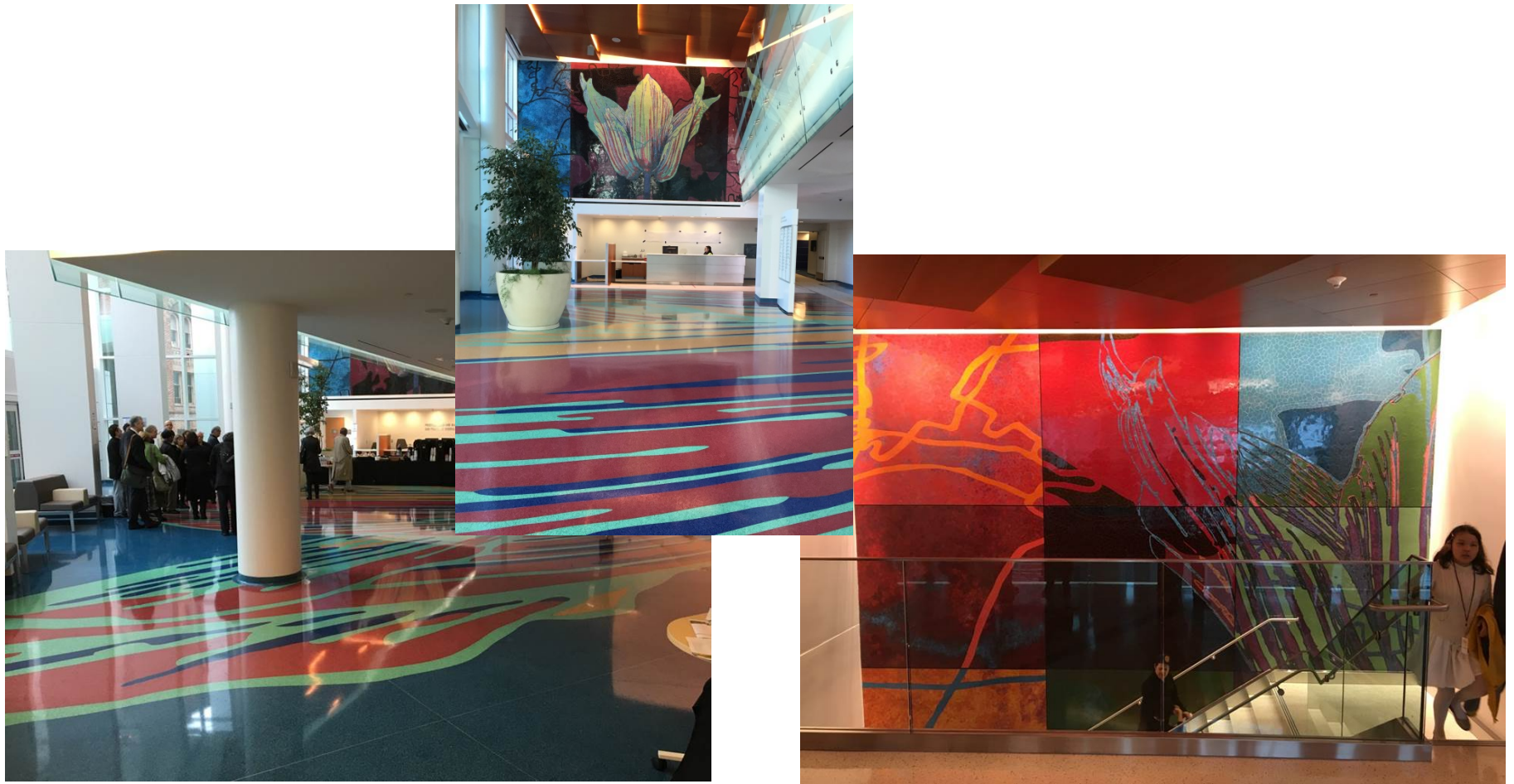
April 2016



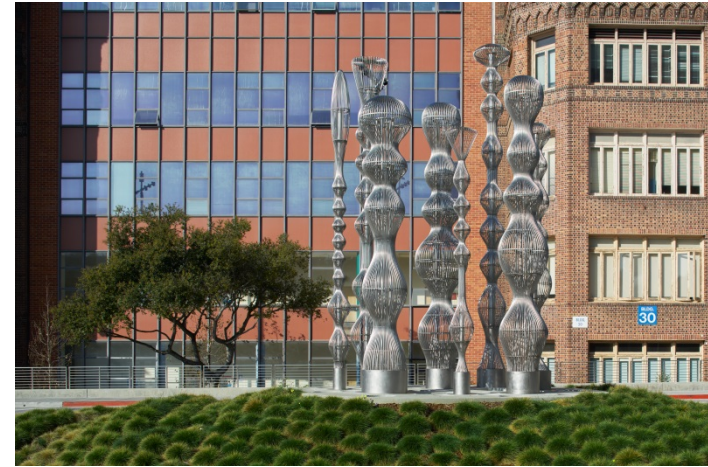
Motion to approve and to accept into the Civic Art Collection, the artwork entitled *Revival: Arnica and Angelica; Foxglove and Aconite; Passion Flower and Yarrow; Monkshood and Echinacea; and Passion Flower and Foxglove*, 2015 by Nancy Blum.



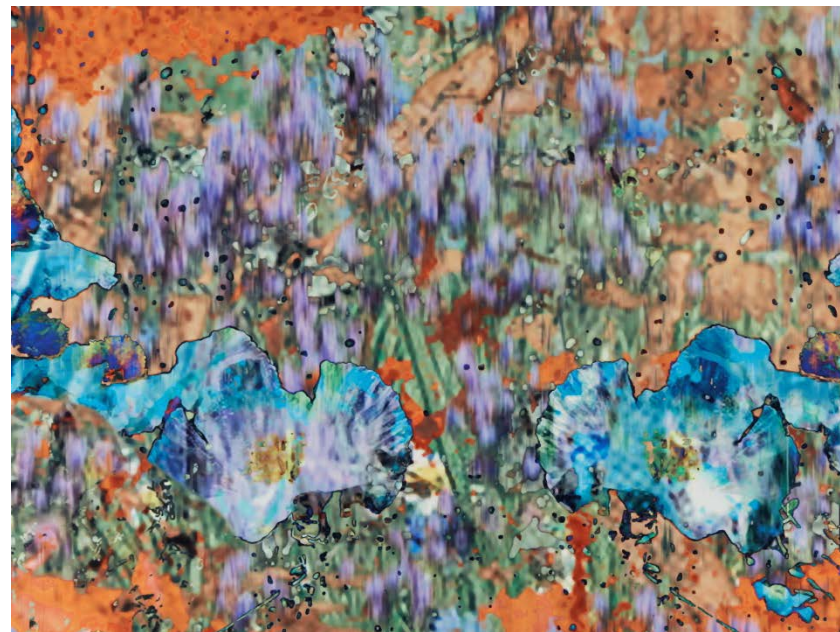
Motion to approve and to accept into the Civic Art Collection, the artwork entitled *Redbud Redux Suite*, 2015 by Stephen Galloway. The artwork consists of a curved glass wall (98-2/8 in. by 97-3/8 in.) and two glass light-well walls in the west corridor (93-5/8 in. by 297 in., each). All are glass panels with a polyester film interlayer. The artist's design depicts photographs of Western Redbud, a native California shrub. The artwork is installed in the General Hospital Acute Care Building, Floor 4, Central Corridor.



Motion to approve and to accept into the Civic Art Collection, the artwork entitled *Nature of Medicine*, 2015 by Rupert Garcia. The artwork consists of the terrazzo floor design (88 ft. by 52 ft., overall) and two mosaic murals; above reception (190 in. by 359-1/2 in., overall) and above the stairs (252-7/8 in. by 305 in., overall). The artist design depicts a colorful, abstracted flower motif for the lobby floor and mosaic murals. The artwork is installed in the General Hospital Acute Care Building, Main Entrance and Lobby.



Motion to approve and to accept into the Civic Art Collection, the multi-part artwork entitled *Ethereal Bodies*, 2015 by Cliff Garten. The outdoor sculpture is formed of eight vertically aligned 304 stainless steel sculpture elements (which vary in height between 13 and 17 ft., maximum 3 ft. in diameter), each with sequenced LED lighting and the surrounding planted earthwork. The artwork is located at the General Hospital Acute Care Building, in the entry median.



Motion to approve and to accept into the Civic Art Collection, the artwork entitled *Forever Yours*, 2015 by Mildred Howard. The artwork consists of a curved glass wall (98-2/8 in. by 97-3/8 in.) and two glass light-well walls in the east corridor (93-5/8 in. by 246 in., each). All are glass panels with vitreous enamels and polyester film interlayer. The artist's design depicts impressionistic views of springtime poppies and the golden hills of the Bay Area. The artwork is installed in the General Hospital Acute Care Building, Floor 3, Central Corridor.



Motion to approve and to accept into the Civic Art Collection, the artwork entitled *Quaking Aspens*, 2015 by Paul Kos. The artwork consists of a digital video on five flat screen monitors with painted aluminum frames (54 in. by 126 in., overall), embedded in wall. The artist designed the monitor frames to match the other windows in the hospital and the digital video provides a virtual view onto Aspen trees dancing in the wind. The artwork is installed in the General Hospital Acute Care Building, Ground Floor, Surgery Waiting Room.



Motion to approve and to accept into the Civic Art Collection, the mosaic artwork entitled *Amate*, 2015 by Jetro Martinez. The mosaic artwork consists of ceramic tiles and measures 56-1/2 in. by 112 in. The artist's design depicts a colorful, bird, animal and flower motif inspired by the traditional indigenous Mexican folk art of amate (tree bark paper) paintings. The artwork is installed in the General Hospital Acute Care Building, First Floor, Emergency Entry Wall.



Motion to approve and to accept into the Civic Art Collection, the artwork entitled *River of Time*, 2015 by Alan Masaoka. The artwork consists of a curved glass wall (98-2/8 in. by 97-3/8 in.) and two glass light-well walls in the east corridor (93-5/8 in. by 246 in., each). All are stained glass panels. The artist's design depicts budding tree branches suspended above a calm river bed in mostly blue hues. The artwork is installed in the General Hospital Acute Care Building, Floor 7, Central Corridor.



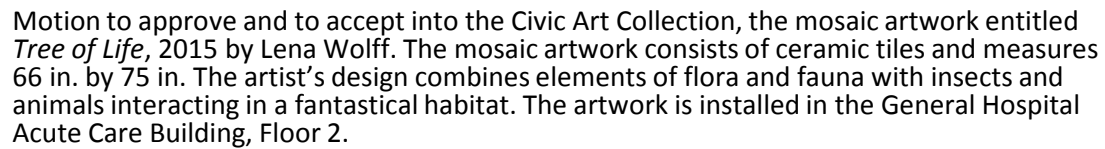
Motion to approve and to accept into the Civic Art Collection, the artwork entitled *Breath Between Sky and Ocean*, 2015 by Masayuki Nagase. The outdoor artwork consists of two hand carved granite boulders (4 ft. by 4 ft. by 4 ft.), five polished and carved granite benches (5 ft. by 6 ft. by 18 in., each) and eight polished and carved pavers (each range 3-4 ft. by 2-3 ft. by 2 in.) All are installed throughout the garden, connected by arcing paths in concrete aggregate. The artist's design depicts series of ripples carved into the boulders to express themes of water and wind and the design on the stone pavers have polished surfaces and carved cloud like forms. The artwork is located at the General Hospital Acute Care Building, Floor 7, Roof Garden.



Motion to approve and to accept into the Civic Art Collection, the artwork entitled *Happy Hearts/Broken Hearts*, 2015 by Tom Otterness. The outdoor artwork consists of eight figurative bronze sculptures: *Mother with Children with Hearts* (98 in. by 92 in. by 59 in.); *Wheelchair Heart* (21 in. by 17 in. by 24 in.); *Doctor Heart and Patient Heart* (24 in. by 42 in. by 12 in.); *Daddy Heart with Child* (5 in. by 10 in. by 12 in.); *Sunbathing Heart with Shoes* (5 in. by 10 in. by 12 in.); *Cellphone Heart* (24 in. by 17 in. by 12 in.); *Small Heart Walking* (14 in. by 11 in. by 6 in.); and *Two Small Hearts Sitting* (10 in. by 18 in. by 5 in.) The artist's design inspired by the General Hospital theme "Heart of the City" depicts a larger entry piece and smaller figures in various patient and visitor scenarios along the pedestrian path. The artworks are located at the General Hospital Acute Care Building, Potrero Street entrance.



Motion to approve and to accept into the Civic Art Collection, the artwork entitled *The Streets and Hills of San Francisco*, 2015 by Arthur Stern. The artwork consists of a two glass light-well walls in the west corridor (93-5/8 in. by 297 in., each). Both are stained glass panels with aluminum framing. The artist's traditional stained glass design depicts a colorful patchwork of buildings, parks, streets, clouds. The artwork is installed in the General Hospital Acute Care Building, Floor 6, Central Corridor.





Motion to approve and to accept into the Civic Art Collection, the mosaic artwork entitled *Quail and Monkey Branch*, 2015 by Lena Wolff. The mosaic artwork consists of ceramic tiles and measures 66 in. by 113 in. The artist's design combines elements of flora and fauna with insects and animals interacting in a fantastical habitat. The artwork is installed in the General Hospital Acute Care Building, Floor 2.



Motion to approve and to accept into the Civic Art Collection, the mosaic artwork entitled *Circular Path*, 2015 by Lena Wolff. The mosaic artwork consists of ceramic tiles and measures 66 in. by 87 in. The artist's design combines elements of flora and fauna with insects and animals interacting in a fantastical habitat. The artwork is installed in the General Hospital Acute Care Building, Floor 2.



Motion to approve and to accept into the Civic Art Collection, the artwork entitled *Sky*, 2014 by Merge Conceptual Design. The artwork installation is comprised of 26 larger mirror-polished stainless steel spheres with varying diameters of 5 ft., 3 ft. and 2 ft. The spheres are hollow and cut open at various angles and LED lights light up the interior of each sphere. The spheres are suspended from the ceiling and loosely arranged in a field that floats above a larger portion of the central seating area (approximately, 35 ft. x 40 ft.) The artwork is installed at the San Francisco International Airport, Terminal 3, Boarding Area E, Gate 65.



Motion to approve and to accept into the Civic Art Collection, the artwork entitled *Spirogyrate*, 2014 by Eric Staller. The artwork installation is comprised of twelve spinning illuminated glass art discs (66 in. diameter, each) with graphic spiral patterns and LED lighting, with motion sensors; nine disks below raised floor and three disks at furred wall. The discs change and respond to people's movement through the space. The artwork is installed at the San Francisco International Airport, Terminal 3, Boarding Area E, Children's Area.



Motion to approve and to accept into the Civic Art Collection, the artwork entitled *Ocean Voices II*, 2013 by Ursula von Rydingsvard. The sculpture consists of cedar and graphite and measures 121 in. by 57 in. by 65 in. The artist carved and chipped at stacked cedar 4-by-4 planks of varying lengths, creating the monumental and textured faceted surface. The artwork was purchased for and installed at the San Francisco International Airport, Terminal 3 East, Post-Security E-Plaza.



Motion to approve and to accept into the Civic Art Collection, the artwork entitled *Voyage*, 2014 by Val Britton. The artwork is comprised of fifteen laminated glass panels (113 in. by 44 in., each) with melting ceramic pigments, lacquer and graphite with overall dimensions of 9-1/2 ft. by 55 ft. The artist's design draws on the language of maps, plans, weather patterns and flight routes to depict an imaginary panoramic space. The artwork is installed at the San Francisco International Airport, Non-secure Connector.



Motion to approve and to accept into the Civic Art Collection, the artwork entitled *High Heels for Going to Heaven*, 2013 by Yayoi Kusama. The sculpture is comprised of a pair of white high-heeled shoes that sprout monumentally scaled flowers with large red polka dots; the left shoe (61 in. by 29-1/2 in. by 37-3/8 in.) and the right shoe (49-5/8 in. by 27-1/2 in. by 37-7/8 in.) The center of each flower is rendered in stainless steel and forms a curved reflective “eye” mirroring its surroundings. The artwork was purchased for and installed at the San Francisco International Airport, Terminal 1, Secure Connector, Arrivals, Post-Security.



Motion to approve and to accept into the Civic Art Collection, the mosaic artwork entitled *Riven/River*, 2014 by Jim Melchert. The mosaic artwork consists of gray porcelain ceramic tile, with red and blue glazes and measures 71 in. by 166 in. The artist's abstract design is comprised of two rectangular color fields of complex cracks and fissures with an energetic blue line that spans the length of the piece. The artwork is installed at the San Francisco International Airport, Terminal 1, Secure Connector, Arrivals, Post-Security.



Motion to approve and to accept into the Civic Art Collection, the mosaic artwork entitled *Untitled (Large Variation)*, 2015 by Amy Ellingson. The mosaic artwork consists of ceramic tile, along a curved wall, measuring 10 ft. by 109 ft. The artist's abstract design suggests movement and transformation through color, geometry, repetition, scale and spatial illusion. The artwork is installed at the San Francisco International Airport, Terminal 3 East, Concourse, Post-Security.



Motion to approve and to accept into the Civic Art Collection, a photographic series of artwork entitled *Everywhere All at Once*, 2012-2014 by Vanessa Marsh. The series is comprised of six black-and-white photographic, pigment prints on archival paper (35 in. by 35 in., each) installed in the following order: *Landscape #18*, 2014; *Landscape #1*, 2012; *Landscape #9*, 2012; *Landscape #19*, 2013; *Landscape #5*, 2012; and *Landscape #17*, 2014. The artist's photogram images create mysterious nightscapes which include shadowed imagery of celestial skies, power lines, Ferris wheel and palm trees. The artwork was purchased for and installed at the San Francisco International Airport, Terminal 3, Gate 71B.



Motion to approve and to accept into the Civic Art Collection, a series of photographic montages entitled *Forever in the Sky*, 2013 by Sanaz Mazinani. The series is comprised of six photographic, pigment prints on archival paper (33 in. by 33 in., each) installed in the following order: *Bayview*; *City Hall*; *Golden Gate*; *Mission*; *Richmond*; and *Sutro Tower*. The photographic montages contain imagery of clouds intermingled with iconic San Francisco landmarks, infused with Persian motifs to make complex geometrical abstractions. The artwork was purchased for and installed at the San Francisco International Airport, Terminal 3, Gate 71A.



Motion to approve and to accept into the Civic Art Collection, a series of digital prints entitled *Strangerhood*, 2014 by Lordy Rodriguez. The series is comprised of six digital prints on aluminum (45 in. x 31-1/2 in., each) and installed in the following order: *Castro*; *Chinatown*; *Fishermans Wharf*; *Haight-Ashbury*; *Mission*; and *North Beach*. The artist's designs are drawn maps depicting six iconic San Francisco neighborhoods reimagined as independent countries. The digitally reproduced artworks (originally an Art on Market Poster Series, *Strangerhood*, 2013) were purchased for and installed at the San Francisco International Airport, Terminal 3 East, Baggage Claim.



Motion to approve and to accept into the Civic Art Collection, the artwork entitled *Repeat Melody*, 2015 by Julio Cesar Morales. The artwork consists of a curved glass wall (98-7/8 in. by 97-3/8 in.) and two glass light-well walls in the east corridor (93-5/8 in. by 246 in., each). All are glass panels with vitreous enamels. The artist's design depicts drawn figurative imagery, inspired from photographs taken during interviews he conducted with patients, visitors and hospital staff. The artwork is installed in the General Hospital Acute Care Building, Floor 6, Central Corridor.