

To: San Francisco Arts Commission  
Director of Cultural Affairs Tom DeCaigny  
401 Van Ness, Suite 325  
San Francisco, CA 94102

From: COMFORT WOMEN JUSTICE COALITION  
Co-Chairs, Julie Tang and Lillian Sing  
Project Managers, Jocelyn Zanzot and Daniel Neil  
MOBILE STUDIO  
PO Box 27635, San Francisco, CA 94127

December 12, 2016

Dear Mr DeCaigny,

It is our great honor to present to the City and County of San Francisco a new Memorial to the "Comfort Women", a gift of monumental sculpture that recognizes the hundreds of thousands of women and girls that were sexually enslaved by the Imperial Japanese Army during World War II. While there are other memorials around the world and in other American cities that honor these women and girls and the bravery of those survivors who's truth telling has forever changed the world, this unique piece of art has been designed for San Francisco, to be placed in the new Extension of St. Mary's Square, Chinatown.

The call for a "Comfort Women" Memorial in San Francisco originated as a unanimously passed Resolution by the San Francisco Board of Supervisors in 2015. The Memorial design has been developed in compliance with the policies and guidelines for the civic art collection of the City and County of San Francisco under the jurisdiction of the San Francisco Arts Commission and San Francisco Recreation and Parks Department. A public international call for artists and local public review process was organized by the Comfort Women Justice Coalition and resulted in this final winning proposal.

We look forward to working closely with the San Francisco Public Arts Commission to realize the design and exact location in the Saint Mary's Square Extension in the upcoming months and to installing this sculpture before the end of 2017. Please see the final design proposal and explanatory documents attached including an artist bio and example of past work as well as the proposed text for the plaque.

Many thanks for your ongoing support and commitment to this important international memorial and call for justice to victims and survivors of sexual violence.

Sincerely,

Julie Tang and Lillian Sing, COMFORT WOMEN JUSTICE COALITION Co-Chairs

# “Comfort Women” Memorial SF

## Comfort Women Justice Coalition

### Mobile Studio



## CALL FOR ARTISTS

“Comfort Women” San Francisco Memorial at St. Mary’s Square Extension

CWJC + Community + You

Jury Panel

Henry Der  
Jennifer Dunlop Fletcher  
Jeffrey Heller  
Phyllis Kim  
Kelli Morgan

“Those who can not remember the past are condemned to repeat it.” – George Santayana

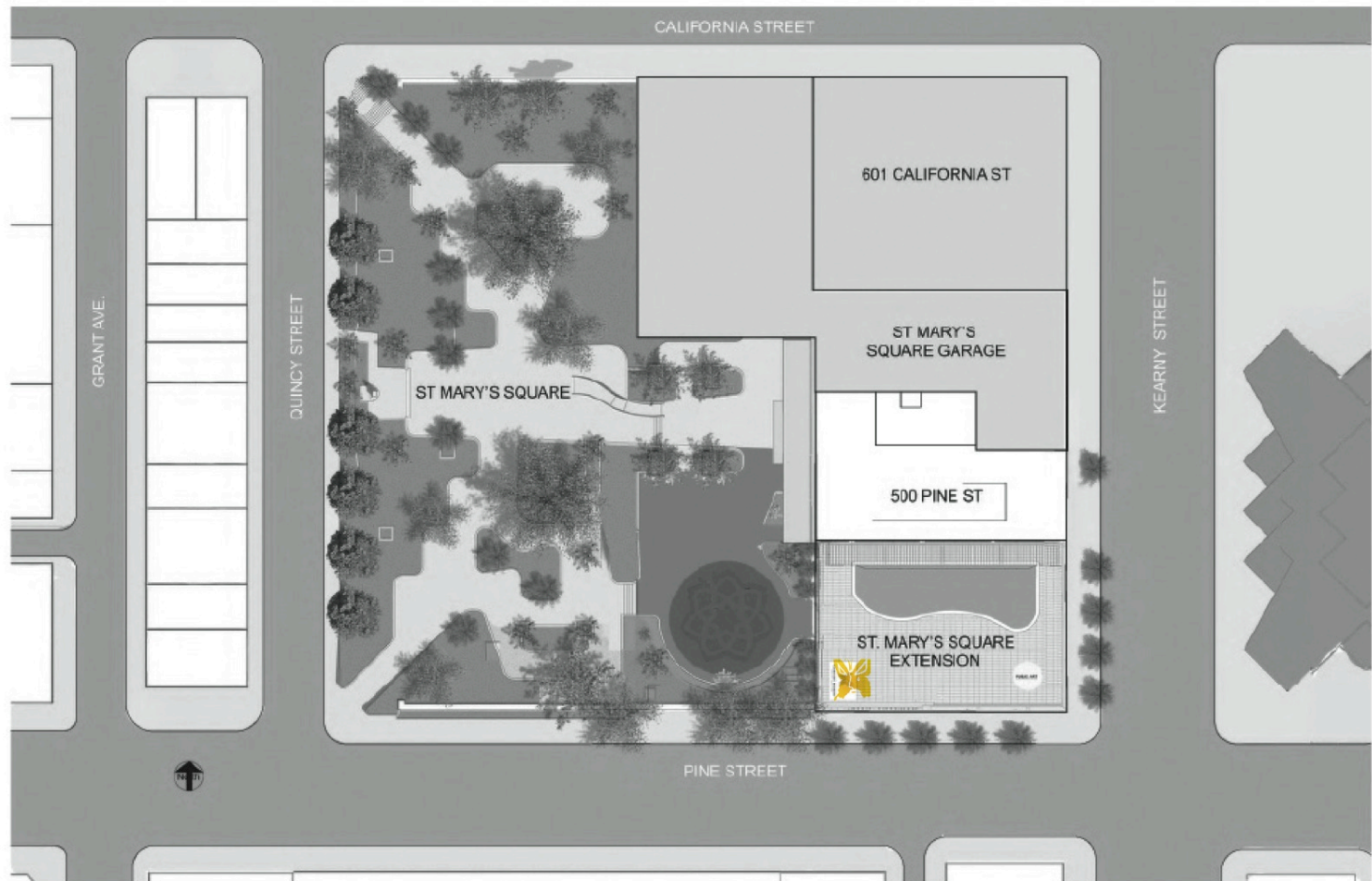
# Call for Artists

- 2015 Board of Supervisors passes unanimous resolution calling for a Memorial to the “Comfort Women” to be built in San Francisco
- 2016 CWJC initiated an international juried call for artists
- First public review of 36 submissions from 7 countries around the world and across the United States
- Top 3 finalists receive \$1000 + 1 month to revise and refine submissions. Second public review at Chinatown Library and Supervisor Mar’s office.
- Jury panel and CWJC Executive Committee choose Steven Whyte as winning submission, Letter of Intent submitted to SF Public Arts Commission.
- Projected Installation: by the end of 2017

It is our great honor to present to the City and County of San Francisco a new Memorial to the “Comfort Women”, a gift of monumental sculpture that recognizes the hundreds of thousands of women and girls that were sexually enslaved by the Imperial Japanese Army during World War II. While there are other memorials around the world and in other American cities that honor these women and girls and the bravery of those survivors who’s truth telling has forever changed the world, this unique piece of art has been designed for San Francisco, to be placed in the new Extension of St. Mary’s Square, Chinatown.

“Comfort Women” Justice Coalition, 2016





**ST MARY'S SQUARE EXTENSION**  
SAN FRANCISCO, CALIFORNIA

**OVERALL SITE PLAN**

500 PINE ST COMPANY LLC

July 16, 2015

**"COMFORT WOMEN" MEMORIAL SF SITE: ST. MARY'S SQUARE**



**"COMFORT WOMEN"**  
JUSTICE COALITION





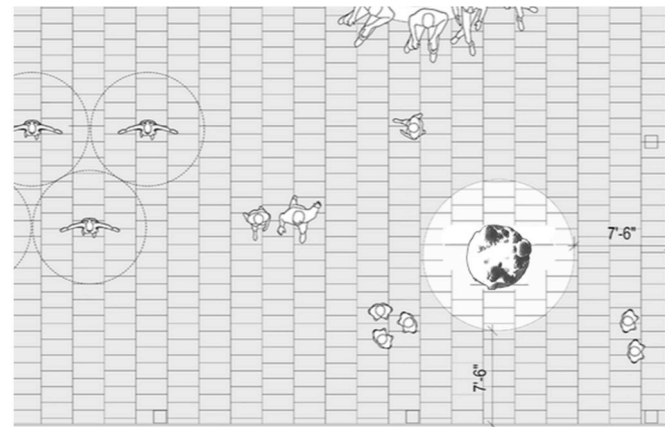
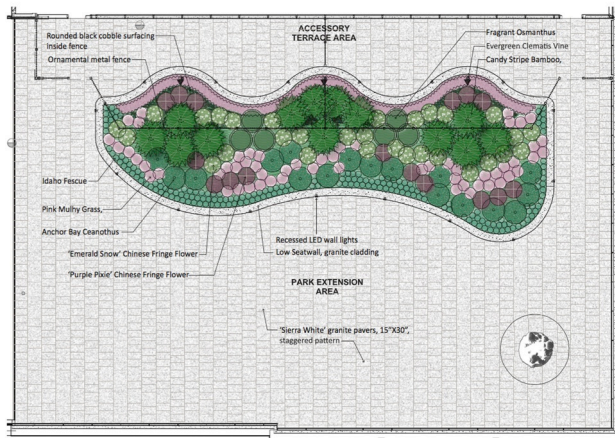
View of Extension Site under construction, looking west toward Grant Street



## Steven Whyte's Entry Selected as Winner



Women's Column of Strength





*The monument will be constructed of art-grade bronze and steel, materials which are extremely durable to both age and weather. To guard against vandalism, the steel column would be fit with fine mesh to protect the interior of the column. A small door would be designed into the base to allow for maintenance of the lighting.*



36in Diameter

10ft Total



5ft 2in Tallest Figure



900 lbs  
9 sq.ft.

# Steven Whyte Studios

- Born in England, classically trained in sculpture, numerous awards and commissions
- Built his career in monumental public bronze sculpture with a focus on portraiture, credited with 40 life-size or larger bronze public figures
- Has commemorated many significant figures in the life and times of American History: Abraham Lincoln, Martin Luther King, John Steinbeck and Cannery Row....
- Recently **The Smithsonian** Institute acquired the bust of Congressman John J Conyers Jr. for the **National Portrait Gallery** in Washington D.C.

*" I am primarily a sculptor of people. A historian, recording a likeness and creating characters of yesterday's community and today's society for tomorrow's viewer. I manipulate clay to found into bronze for the consideration by an audience, in the home, the street and the gallery. "*

**Steven Whyte**

# Steven Whyte's Process

Steven Whyte Studios will perform the following services for the monument:

- perform all necessary research, portrait visits and PR;
- supply all materials and studio space;
- create the sculpture's armature;
- acquire and pay all necessary models;
- rent/buy all clothing used for reference;
- sculpt a naturalistic life-size (clay size) figure of the young women;
- sub-contract and manage molding services;
- deliver the mold's to the foundries;
- sub-contract and manage bronze casting services and assume all casting costs;
- review and quality control bronze casting components;
- fabricate, review and quality control steel support components;
- internal stainless steel structure painting and inscription;
- review and quality control; pre-shipping packing and handling;
- shipping and transportation to San Francisco, California;
- supervise installation;
- advise on maintenance of the finished piece.





Diversity, Solidarity and Courage



Memory, Resilience and Justice

# Maintenance and Materials

- Art grade bronze
- Corten Steel
- Interior of column protected with mesh
- Art Works Foundry in Berkeley

# Proposed Budget

- Total Cost of Monument:.....  
..... ..\$140,000  
(plus sales tax if applicable)
- Additional Cost for Grandma Figure:  
.....\$65,000  
Subject to further approval by the CWJC



# Examples of Built Work





***Dream Speech Bust.*** 1.5 times life-size portrait bust of **Dr. Martin Luther King, Jr.** displayed above a plaque containing his “I Have a Dream” speech in its entirety. City of Hollywood, FL. 2008. (Project budget: \$25,000)



***Jumbo the Elephant.*** Life-size (11ft) African elephant monument for Tufts University's mascot. Tufts University, Medford, MA. 2014. (Project budget: \$300,000)





***John David Crow.*** Twice life-size portrait action figure of 1957 Heisman Trophy Winner John David Crow for Texas A&M. Texas A&M University, College Station, TX. 2010. (Project budget \$250,000)





***Tribute to Fallen Deputies.*** Four life-size figures in tribute to fallen officers and their families. San Diego Sheriffs Deputies Association, San Diego, CA. 2011. (Project budget: \$350,000)



***Congressman John J. Conyers, Jr.*** Life size bust of the [U.S. Representative](#) for [Michigan's 13th congressional district](#). Member of Congress since 1965 and is currently its Dean. Washington D.C. 2017. (Project budget: \$10,000)



***A National Monument to John Steinbeck and Cannery Row.*** Nine slightly over life-size figures on a 17' x 20' x 16' stone formation. Author John Steinbeck and eight characters from his novel Cannery Row. (Project budget: \$1 Million)



# Sculpture in the collections of:

- Litchfield Cathedral, Litchfield, Staffordshire.
- Forte PLC, London.
- Macmillan PLC, London.
- P&O PLC, London.
- Keele University, Keele, Staffordshire.
- Texas A&M University, College Station, TX.
- Tufts University, Medford, MA
- The City of Hollywood, FL
- Stoke-on-Trent City Council, Staffordshire.
- Staffordshire County Council.
- Monterey Bay Aquarium, Monterey, CA.
- City Hall, Seaside, CA.
- The Panetta Institute, Seaside, CA
- United States Sports Museum and Archive, Daphne, AL
- The Smithsonian Institute, National Portrait Gallery, Washington D.C.
- Various distinguished private collections

# For additional information

- <http://remembercomfortwomen.org>
- [www.Facebook.com/stevenwhytecarmel](http://www.Facebook.com/stevenwhytecarmel)
- [www.stevenwhytesculptor.com](http://www.stevenwhytesculptor.com)\_(under construction)
- [www.mobilelandscapestudio.wordpress.com](http://www.mobilelandscapestudio.wordpress.com)

## Comfort Women Memorial Inscription

"Our worst fear is that our painful history during World War II will be forgotten." - former "Comfort Woman"

From 1932 to 1945, more than 200,000 women and girls in over 13 Asia-Pacific countries were enslaved by Japan's Imperial Armed Forces in the largest government-operated sexual slavery and trafficking system in the 20th century. 80% of them died in wartime captivity. But when the surviving "Comfort Women" courageously broke their silence in the 1990's, they helped move the world to declare that sexual violence during war is a crime against humanity.

The "Comfort Women's" voices must not be forgotten. Responsibility for such crimes must be accepted. This memorial is dedicated to eradicating sexual violence and sex trafficking in the San Francisco Bay Area and throughout the world.

This memorial is made possible by the support of the people of the City and County of San Francisco pursuant to San Francisco Board Resolution #342-15 adopted unanimously on September 22, 2015.

Major financial contribution towards the Memorial comes from the Chinese and Korean American communities.