

SAN FRANCISCO RECREATION AND PARK DEPARTMENT  
17TH AND FOLSOM STREET PARK  
CIVIC DESIGN REVIEW | Phase 3 | MARCH 2016



**Project Manager**

Paulina Araica

*Recreation and Park Department*

**Design Team**

Edward Chin, Landscape Architect

Andrea Alfonso, Landscape Architect

*San Francisco Public Works*

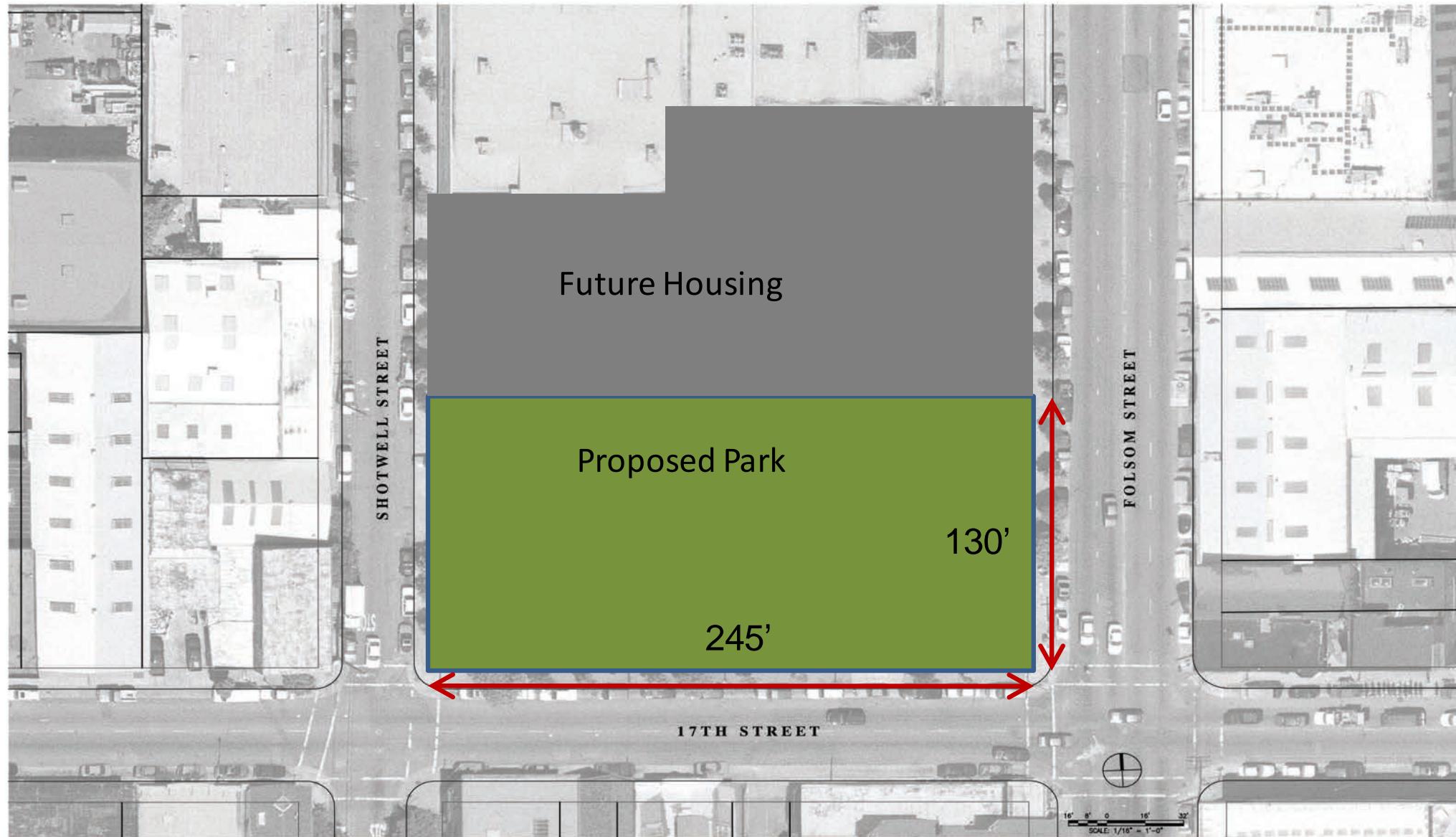
Sue Exline

*Planning Department*

Oscar Grande

*PODER*





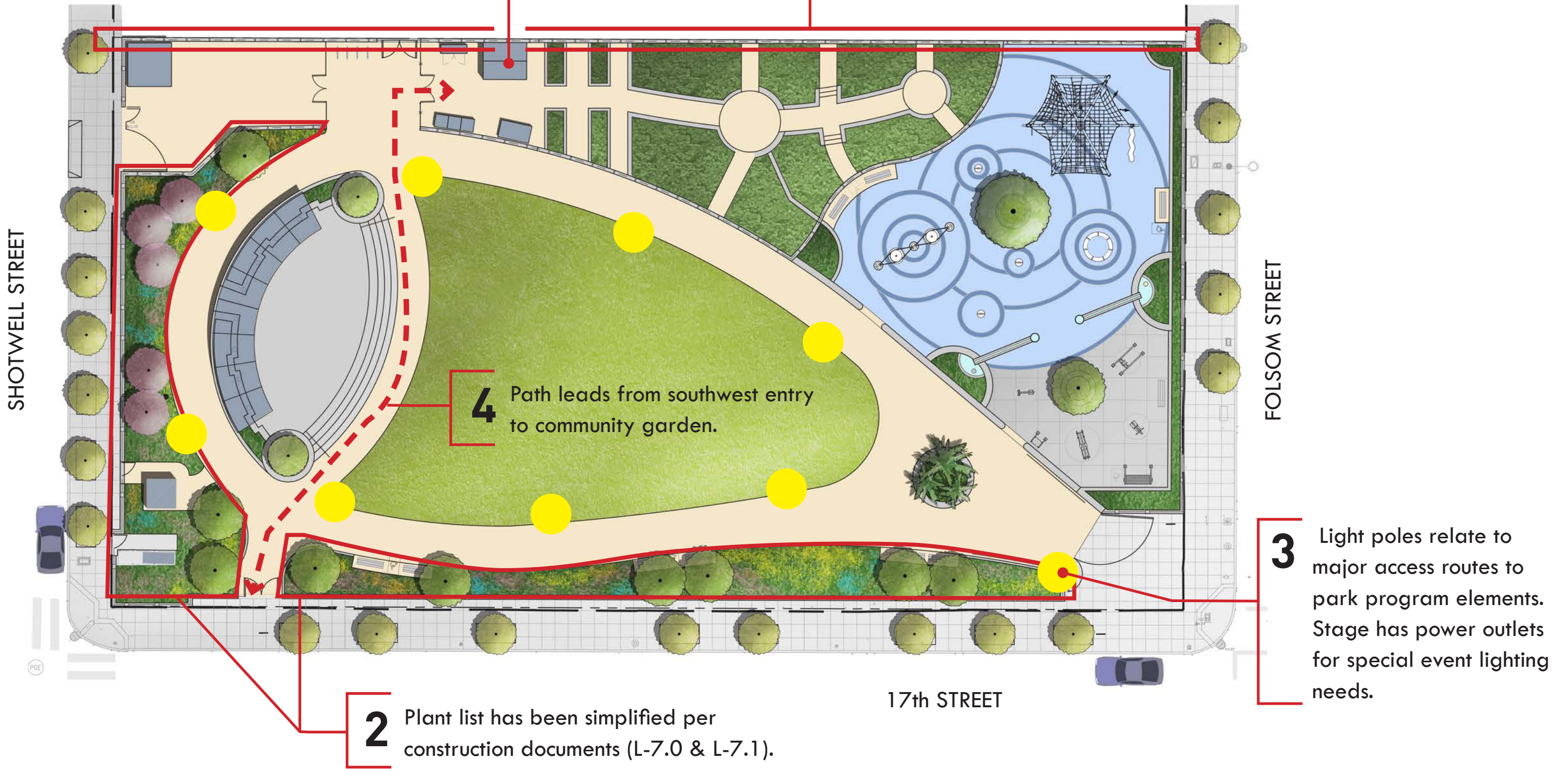
# Phase 2 Approval Conditions:

1. Consider the sense of enclosure created by the density of planting and rear fence
2. Simplify the plant list
3. Relate the lighting to the park programming and consider integration into the trellis
4. The path in from of the stage should lead from the southwest entry to the community garden gate



Greenhouse moved next to maintenance yard so it aligns with the geometry of the park.

**1** Rear steel open-grid fence (6' high) with limited espalier trees in the community garden gives more transparency to adjacent housing project.



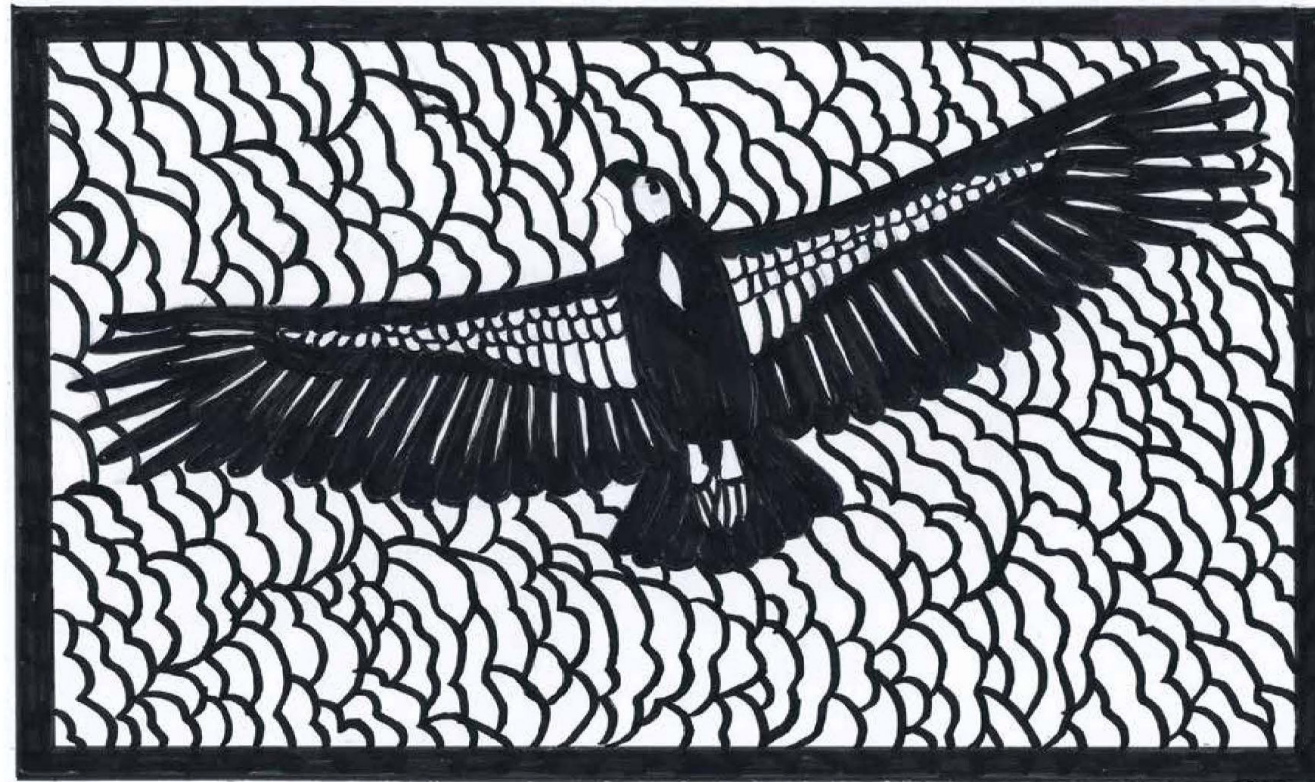
**4** Path leads from southwest entry to community garden.

**3** Light poles relate to major access routes to park program elements. Stage has power outlets for special event lighting needs.

**2** Plant list has been simplified per construction documents (L-7.0 & L-7.1).

**"Cycle of Life: California Condor"**

Fence section on Folsom Street  
17<sup>th</sup> & Folsom Street Park, San Francisco Arts Commission



Metal Cutout, powder coated, 6 ft. high x 10 ft. wide

**Carmen Lomas Garza**  
315 Harvard Street, San Francisco, CA 94134-1345  
(415) 841-1566 [lasecretaria@carmenlomasgarza.com](mailto:lasecretaria@carmenlomasgarza.com)

**"Cycle of Life: Great Blue Heron"**

Fence section on 17<sup>th</sup> Street  
17<sup>th</sup> & Folsom Street Park, San Francisco Arts Commission



Metal Cutout, powder coated, 6 ft. x 6 ft.

**Carmen Lomas Garza**  
342 Prospect Ave.  
San Francisco, CA 94134-1345  
(415) 841-1566  
[lasecretaria@carmenlomasgarza.com](mailto:lasecretaria@carmenlomasgarza.com)





DEPARTMENT OF PUBLIC WORKS  
CITY AND COUNTY OF SAN FRANCISCO  
30 Van Ness Avenue Suite 4100  
San Francisco, CA (415) 557-4700  
94102-6028 Fax (415) 557-4701

Project \_\_\_\_\_

17th AND FOLSOM STREET PARK

2080 FOLSOM STREET  
SAN FRANCISCO, CA 94110

Consultant \_\_\_\_\_

Issue \_\_\_\_\_

100% BID SET

No.	Date	Revisions
1	9/4/15	ADDENDUM 1
2		
3		

Drawn EBKQ  
Check \_\_\_\_\_  
Landscape Arch. EC  
Sr. Arch. \_\_\_\_\_  
Landscape Architect



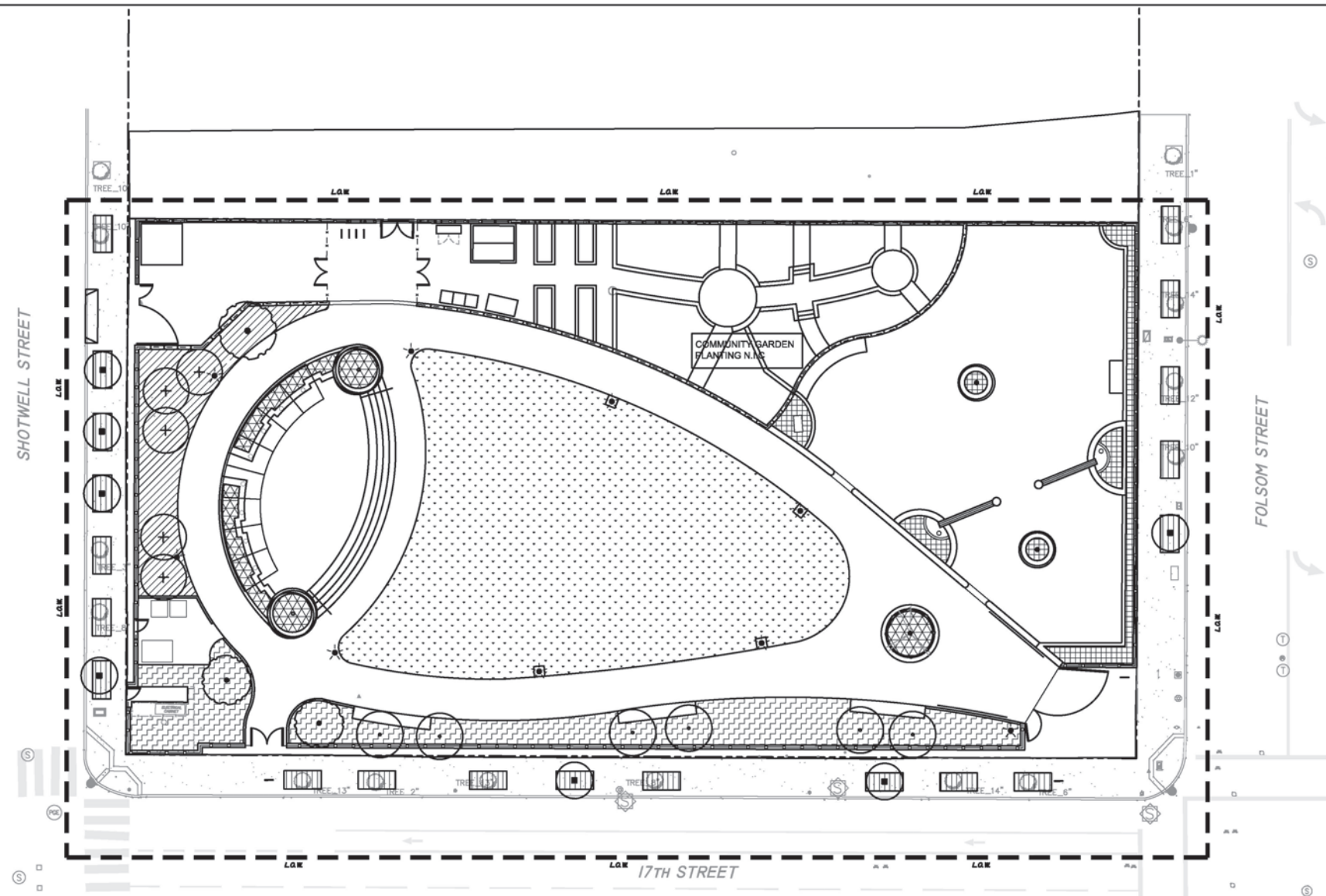
Drawing Title \_\_\_\_\_

PLANTING PLAN

Sheet No. \_\_\_\_\_

L-7.0

Job No. 3054V



17th & FOLSOM PARK PLANT LIST

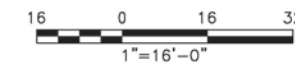
TREES						
SYMBOL	SIZE	BOTANICAL NAME	COMMON NAME	SPACING	WATER USE	QUANTITY
	24" BOX	CHAMAEROPS HUMILIS (3-5 TRUNKS)	MEDITERRANEAN FAN PALM	AS SHOWN	L	2
	24" BOX	ARBUTUS 'MARINA' (MULTI-TRUNK)	MARINA ARBUTUS	AS SHOWN	L	5
	24" BOX	LYONOTHAMNUS FLORIBUNDUS 'ASPLENIFOLIUS'	CATALINA IRONWOOD	AS SHOWN	L	6
	24" BOX	AESCULUS CALIFORNICA	CALIFORNIA BUCKEYE	AS SHOWN	L	3
	48" BOX	ARBUTUS X. (MULTI-TRUNK SPECIMEN)	MADRONE	AS SHOWN	L	1
	24" BOX	JACARANDA MIMOSIFOLIA (STANDARD)	JACARANDA	AS SHOWN	L	7
	24" BOX	JACARANA MIMOSIFOLIA (MULTI-TRUNK)	JACARANDA	AS SHOWN	L	2

SOD									
SYMBOL	KEY	SIZE	BOTANICAL NAME	COMMON NAME	SPACING	WATER USE	QUANTITY		
	-	SOD	TIFWAY II BERMUDA	RYE OVERSEEDED BERMUDA GRASS SOD	-	M	6,589 SF		

- EXISTING TREE

PLANTING NOTES

- ALL PLANTING LISTED ON THIS SHEET SHALL BE PLANTED AS PART OF BASE BID
- PLANTING LEGEND CONTINUED ON SHEET L-7.1
- ALL TREES SHALL BE APPROVED BY PROJECT LANDSCAPE ARCHITECT WITH PHOTOGRAPHS PRIOR TO DELIVERY TO SITE





DEPARTMENT OF PUBLIC WORKS  
CITY AND COUNTY OF SAN FRANCISCO  
30 Van Ness Avenue San Francisco, CA 94102-6028  
Suite 4100 (415) 557-4700 Fax (415) 557-4701

Project \_\_\_\_\_

17th AND FOLSOM STREET PARK

2080 FOLSOM STREET  
SAN FRANCISCO, CA 94110

Consultant \_\_\_\_\_

Issue \_\_\_\_\_

100% BID SET

No.	Date	Revisions
1	9/4/15	ADDENDUM 1
2		
3		

Drawn EB/KQ  
Check \_\_\_\_\_  
Landscape Arch. EC  
Sr. Arch. \_\_\_\_\_  
Landscape Architect

Drawing Title \_\_\_\_\_

PLANTING LEGEND

Sheet No. \_\_\_\_\_

L-7.1

Job No. 3054V

17th & FOLSOM PARK PLANT LIST

SYMBOL	SIZE	BOTANICAL NAME	COMMON NAME	SPACING	WATER USE	QUANTITY
PLAYGROUND PLANTERS - 481 SF						
1 GAL		ERICAMERIA LARICIFOLIA	TURPENTINE BUSH	2' O.C.	L	-6
1 GAL		SEDUM SPECTABILIS	SHOWY STONECROP	2' O.C.	L	12
1 GAL		ZAUSCHERIA CALIFORNICA	CALIFORNIA FUCHSIA	2' O.C.	L	6
1 GAL		ENCELIA CALIFORNICA	COAST SUNFLOWER	2' O.C.	L	6
1 GAL		GALLARDIA PULCHELLA	INDIAN BLANKET	2' O.C.	L	6
1 GAL		OREGANEUM X MAJORICUM	ITALIAN OREGANO	2' O.C.	L	6
1 GAL		ERIGERON GLAUCA	SEASIDE DAISY	2' O.C.	L	6
1 GAL		ACHILLEA MILLEFOLIUM	YARROW	2' O.C.	L	15
1 GAL		SALVIA 'MESA AZURE'	AZURE MOUNTAIN SAGE	2' O.C.	L	15
1 GAL		PENSTEMON 'GARNET'	PENSTEMON	2' O.C.	L	12
5 GAL		CAREX TUMULICOLA	BERKELEY SEDGE	2' O.C.	L	9
1 GAL		MONARDELLA VILLOSA	COYOTE MINT	2' O.C.	L	6
1 GAL		PENSTEMON X	PENSTEMON	2' O.C.	L	-9
SOUTH PLANTING - 1880 SF						
5 GAL		DENDROMECON RIGIDA	BUSH ISLAND POPPY	4' O.C.	L	9
1 GAL		IRIS DOUGLASIANA	IRIS	2' O.C.	L	45
5 GAL		RIBES VIBURNIFOLIUM	EVERGREEN CURRANT	5' O.C.	L	25
5 GAL		CARPENTERIA CALIFORNICA 'EVE CASE'	BUSH ANEMONE	3' O.C.	L	23
5 GAL		RHAMNUS CALIFORNICA	COFFEEBERRY	5' O.C.	L	12
1 GAL		SALVIA 'MESA AZURE'	AZURE MOUNTAIN SAGE	18" O.C.	L	45
1 GAL		PENSTEMON SPECTABILIS	SHOWY PENSTEMON	2' O.C.	L	40
1 GAL		ARTEMESIA 'DAVID'S CHOICE'	COAST SAGEWORT	2' O.C.	L	25
5 GAL		LEYMUS CONDENSATUS 'CANYON PRINCE'	CANYON PRINCE WILD RYE	3' O.C.	L	25
5 GAL		BUDDLEIA 'BLUE CHIP'	DWARF BUTTERFLY BUSH	3' O.C.	L	21
STAGE & ENTRY AREA PLANTERS - 363 SF						
15 GAL		BOUGAINVILLEA 'SAN DIEGO RED'	NCN	AS SHOWN	L	6
1 GAL		SALVIA APIANA 'DWARF'	WHITE SAGE	2' O.C.	L	15
5 GAL		AZIGANTHOS SPP.	KANGAROO PAW	2' O.C.	L	9
5 GAL		ARTEMESIA 'DAVID'S CHOICE'	COAST SAGEWORT	2' O.C.	L	9
5 GAL		GALVEZIA SPECIOSA	ISLAND BUSH SNAPDRAGON	2' O.C.	L	9
5 GAL		CORDYLINE X 'JURRED'	FESTIVAL GRASS	2' O.C.	L	9
1 GAL		GALLARDIA GRANDIFLORA	INDIAN BLANKET	2' O.C.	L	18

PLANTING NOTES

- SEE STANDARD SPECIFICATIONS, SECTION "PLANTING", FOR ADDITIONAL PLANTING INFORMATION.
- ALL TREES LISTED ON L 7.0 AND SOD LAWN SHALL BE PLANTED/INSTALLED AS PART OF THE CONTRACT.
- ALL AREAS TO RECEIVE PLANTING SHALL BE PREPARED AS PART OF THE CONTRACT.
- THE CONTRACTOR SHALL REVIEW ALL PLANT MATERIAL ON SITE WITH THE CITY REPRESENTATIVE AND SHALL INSTALL PLANT MATERIAL ONLY AFTER OBTAINING APPROVAL FROM THE CITY REPRESENTATIVE. THE CONTRACTOR SHALL CONTACT THE CITY REPRESENTATIVE 21 DAYS PRIOR TO THE PLANT DELIVERY TO ARRANGE REVIEW AND INSPECTION PRIOR TO PLANTING WITH THE CITY REPRESENTATIVE.
- THE CITY REPRESENTATIVE RESERVES THE RIGHT TO MAKE SUBSTITUTIONS, ADDITIONS AND DELETIONS IN THE PLANTING SCHEME AS THE WORK PROGRESSES BASED ON SITE CONDITIONS OR THE AVAILABILITY OF SPECIES AND VARIETIES OF SPECIFIED PLANT MATERIAL AT NO ADDITIONAL COST TO THE CONTRACT.
- ALL GROUND COVER AND SHRUBS SHALL BE SPACED TRIANGULARLY.
- SHRUB AREAS SHALL RECEIVE WEED FABRIC, REFER TO SPECIFICATIONS.
- ALL NEW TREES AND SHRUB MATERIAL MUST BE APPROVED ONSITE BY THE CITY REPRESENTATIVE PRIOR TO PLANTING. THE CITY REPRESENTATIVE RESERVES THE RIGHT TO REJECT PLANT MATERIAL FOR DISCREPANCIES IN VARIETY, SIZE SPECIFIED, HEALTH OR CONDITION.

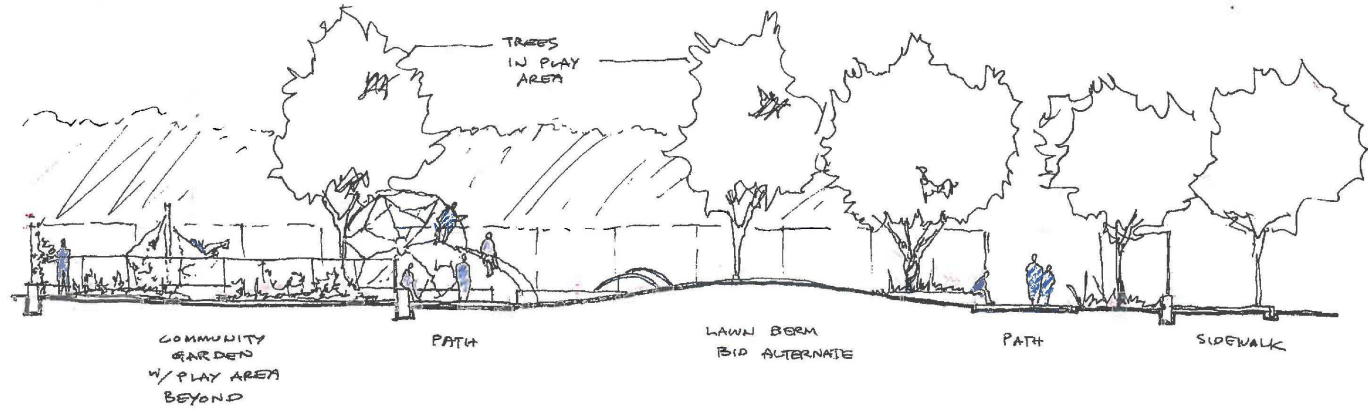
17th & FOLSOM PARK PLANT LIST, CONTINUED

SYMBOL	SIZE	BOTANICAL NAME	COMMON NAME	SPACING	WATER USE	QUANTITY
WEST PLANTING AREA - 967 SF						
5 GAL		CISTUS 'SUNSET'	ROCKROSE	3' O.C.	L	27
1 GAL		BRODIAEA ELEGANS	HARVEST BRODIAEA	2' O.C.	L	12
1 GAL		IRIS DOUGLASIANA	IRIS	2' O.C.	L	27
1 GAL		ASCLEPIAS SPP.	MILKWEED	2' O.C.	L	30
5 GAL		MIMULUS HYBRID ORANGE	MONKEY FLOWER	2' O.C.	L	60
5 GAL		CARPENTERIA CALIFORNICA	BUSH ANEMONE	2' O.C.	L	21
5 GAL		ROMNEYA COULTERI	MATILIA POPPY	6' O.C.	L	5
5 GAL		RIBES VIBURNIFOLIUM	RED FLOWERING CURRANT	3' O.C.	L	25
1 GAL		FESTUCA OVINA 'GLAUCA'	SHEEP FESCUE	2' O.C.	L	25
ESPALIERED PLANTS @ COMMUNITY GARDEN FENCE TO BE LOCATED IN FIELD						
-	-	15 GAL PRUNUS SALICINA 'WEEPING'	SANTA ROSA PLUM	AS SHOWN	M	2
-	-	15 GAL CITRUS MEYERI	MEYER LEMON	AS SHOWN	M	2
-	-	15 GAL FICUS CARICA 'DESERT KING'	MISSION FIG	AS SHOWN	M	2
-	-	15 GAL MALUS DOMESTICA	GRANNY SMITHY APPLE	AS SHOWN	M	2
-	-	15 GAL VITUS CALIFORNICA	CALIFORNIA WILD GRAPE	AS SHOWN	M	2
SIDEWALK PLANTERS - 815 SF						
		1/4" MINUS BLUE PATHWAY FINES MULCH, 3" DEPTH				

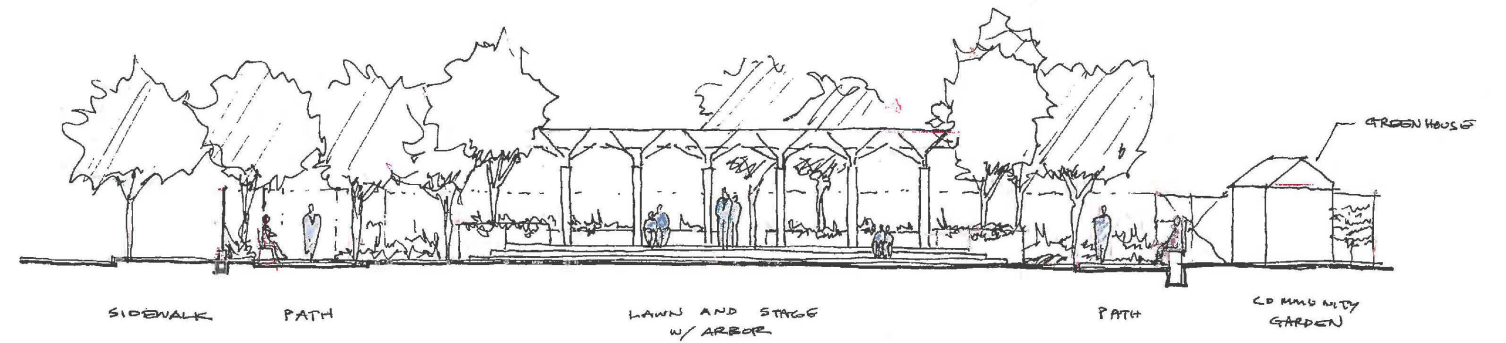
PLANTING ALTERNATE:

BASE BID: LABOR TO INSTALL PLANTS LISTED ON THIS SHEET, WEED FABRIC AND MULCH SHALL BE PERFORMED BY RECREATION AND PARK DEPARTMENT STAFF WITHIN THE PARK BOUNDARY.

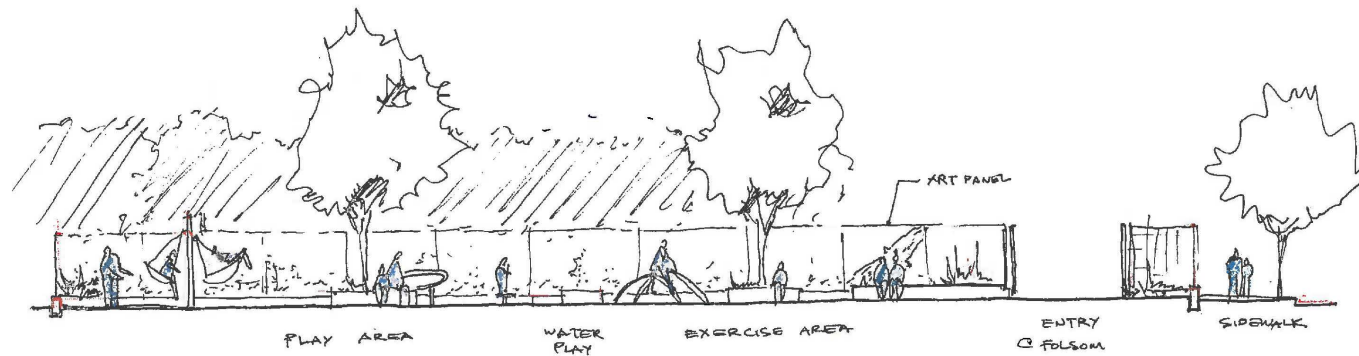
ALTERNATE #7: LABOR TO INSTALL PLANTS LISTED ON THIS SHEET, WEED FABRIC AND MULCH SHALL BE PERFORMED BY CONTRACTOR WITHIN THE PARK BOUNDARY.



Section looking east



Section looking west



Section looking east



Section looking south



Section looking north



# Thank you!

