



**BAYVIEW GATEWAY PUBLIC ART PROJECT
FINAL SELECTION PANEL
MEETING SUMMARY**

MEETING DATE

July 21, 2015

VOTING SELECTION PANELISTS

JD Beltran, President, Arts Commission
Kimberly Brandon, Port of San Francisco Commissioner
William Bulkley, Landscape Architect, Department of Public Works
Helene Fried, Public Art Consultant
Melorra Green, Curator for Inquiry and Impact, SOMArts Cultural Center
Lizzetta LeFalle-Collins, Independent Writer, Artist, Curator, Museum Consultant
Shirley Moore, Community Representative
Ron Moultrie Saunders, Community Representative
Nathan Watson, Executive Director, Public Glass

PROCESS

The following artists presented an overview of their practice and proposals for the Bayview Gateway public art opportunity:

Seyed Alavi
Flaming Lotus Girls
Cliff Garten

Presentations were followed by discussion and voting.

VOTING CRITERIA

The panelists were asked to rank each of the artists and artwork proposals 1, 2, or 3 (1=highest rank) taking into consideration the following criteria:

- Aesthetic quality
- Appropriateness of the proposed artwork for the site and project goals
- Demonstrated feasibility of the preliminary proposal and the proposal budget
- Demonstrated maintainability and durability of the artwork's design, materials, fabrication and installation methods
- Result of reference checks

RESULTS OF VOTING TALLY

Cliff Garten	14
Flaming Lotus Girls	18
Seyed Alavi	22

ARTS COMMISSION APPROVAL

Motion: Motion to approve the selected artist Cliff Garten and the artist's conceptual proposal for the Bayview Gateway, as recommended by the Bayview Gateway Public Art Project Selection Panel.

Motion: Motion to authorize the Director of Cultural Affairs to enter into contract with artist Cliff Garten, for the design and implementation of an artwork in an amount not to exceed \$445,000.

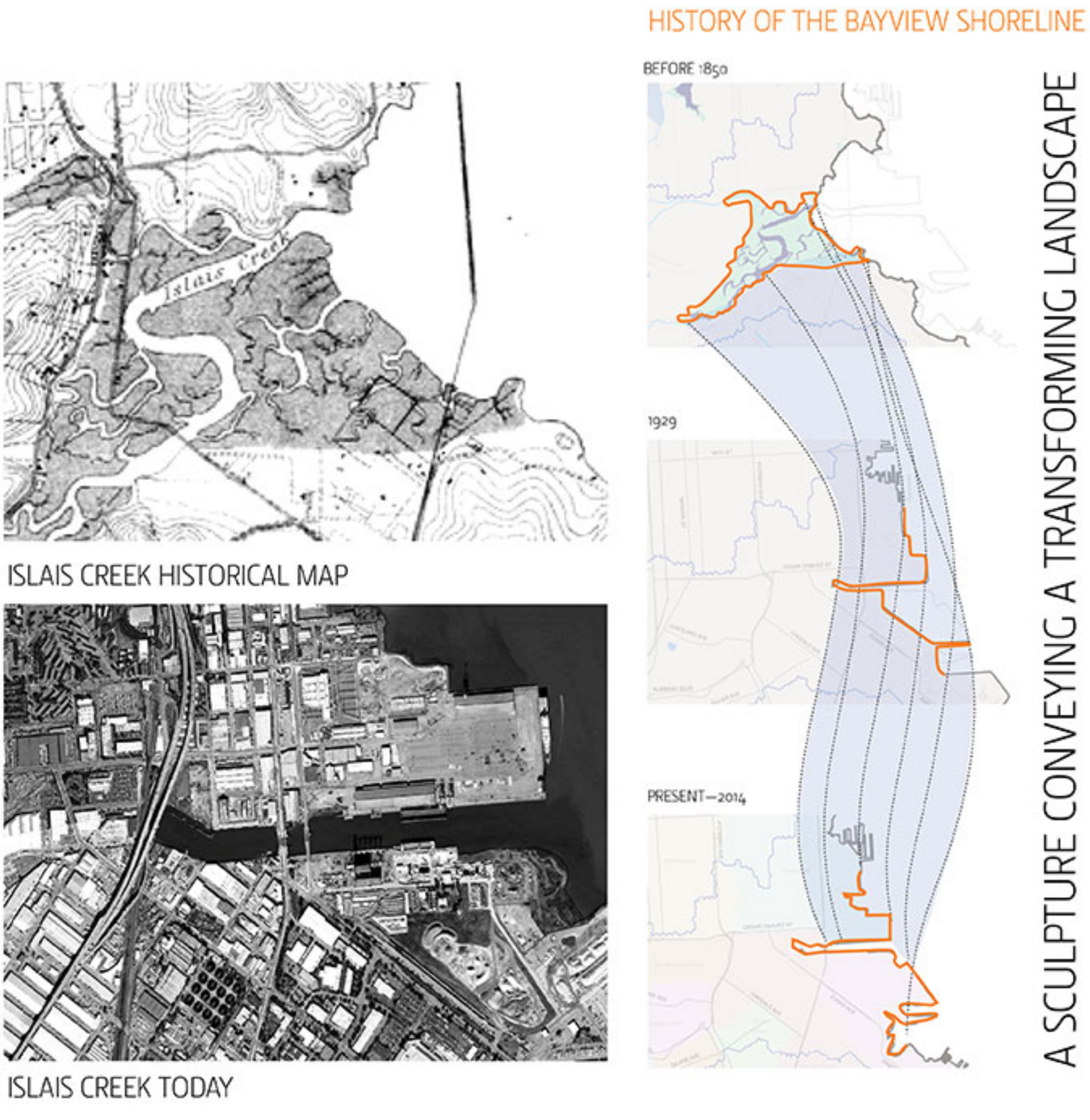
CLIFF GARTEN STUDIO

One of the major characteristics that unite all of the communities in Bayview and their histories is the landscape of Islais Creek and the Bay. Crossing Islais Creek is the threshold of the community of Bayview. Islais Creek and its fluvial valleys were a rich food source for the Ohlone tribe and also the source of San Francisco drinking water until late in the nineteenth century. From Spanish explorers to the Gold Rush shantytowns, to the migrations of African Americans, the Bayview neighborhood has seen large portions of American history played out on its shores and the community continues to evolve. The narrative I am exploring with the sculptures is not a chronicle of events as much as it is probing of an image that will represent the essence of the Bayview community and become an iconic celebratory point of entry to Bayview. The essence of Bayview is really Islais Creek as the geographic threshold to the neighborhood. The creek is the reason that people gathered and settlement occurred. The name Bayview speaks of the value of the bay vistas that embody Bayview's history. I have created sculptures whose gestures and forms are an iconic yet formal and free, solid and transparent, because no one history should take precedence over another the images of the Bay and Islais Creek are a reference point for the sculptures and for the celebration of the Bayview community.

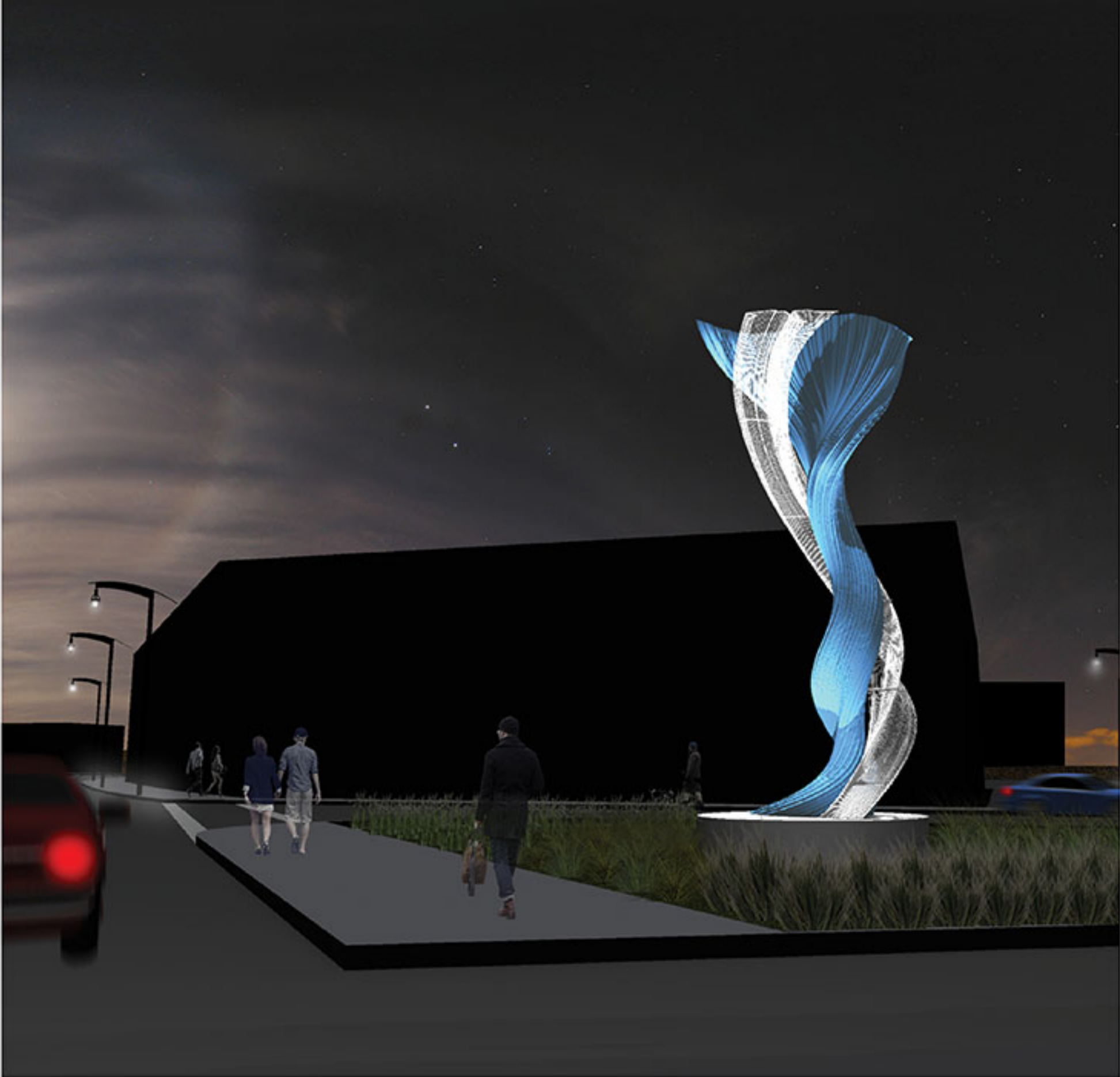
The gateway to Bayview will be marked by a blue polychrome bronze sculpture with a stainless steel wrap on the west side of the street. Titled Islais, it references the shape of the estuary with its different outlets, before Islais Creek became a single channel and suggests how rivers like the communities that grow around them change their form. The blue patina on the bronze and the silver stainless steel that wrap it will be a striking color and signifier for Bayview. The solid form is a bronze casting with a blue patina and the transparent form is comprised of 1/2" stainless steel rods. The patina is baked on the surface of the bronze and is durable in the outdoors. As the diagram below illustrates this stainless steel part of the Islais sculpture is created by using the first map of the mouth of Islais Creek as the profile for the rods at the bottom of the form and the most recent map of the mouth of the Creek as the profile of the rods at the top of the form. The form is created by extending stainless steel rods from the shape of the original coastline that explorers found, to the present shape of the inlet for Islais Creek. The sculpture suggests that like the Bayview community the land is in a constant state of change yet it is solid and enduring. The transparency of this silver form against the blue of the bronze is a striking contrast. White LED lights will illuminate the Islais Sculpture at night, so that the blue patina of the sculpture comes through in contrast to the silver of the stainless steel. The sculpture is the juxtaposition of the past and the present and will become a well known iconic form for the future of Bayview.

By contrast, the East side of the site of the Gateway includes a suite of sculptural seating elements that adopt the same fluid motif as found on the Islais Sculpture. These elegant curving benches flow along the edge of the planting area. The benches are approximately 8' long, 18" wide, and 18" tall with a similar scalloped relief pattern referencing the Islais Sculpture. By distributing these elements along the border defined by landscaping, the supple shape of these seating elements will act to define the corner opposite of the Islais Sculpture, drawing in passersby from the corner of the street along the path to the new park behind the fire station. There are opportunities to introduce text, poetry, or a narrative as an element into the seating or site around the benches to describe the history of Bayview, making the linear progression of the sculptural seating elements a physical timeline that is distinctly specific to the community.

The Islais Sculpture will be a stunning and prominent icon that will become a memorable landmark that will punctuate the journey into and out of Bayview.



VIEW FROM ARTHUR AVENUE TOWARD 3RD STREET AND CARGO WAY INTERSECTION



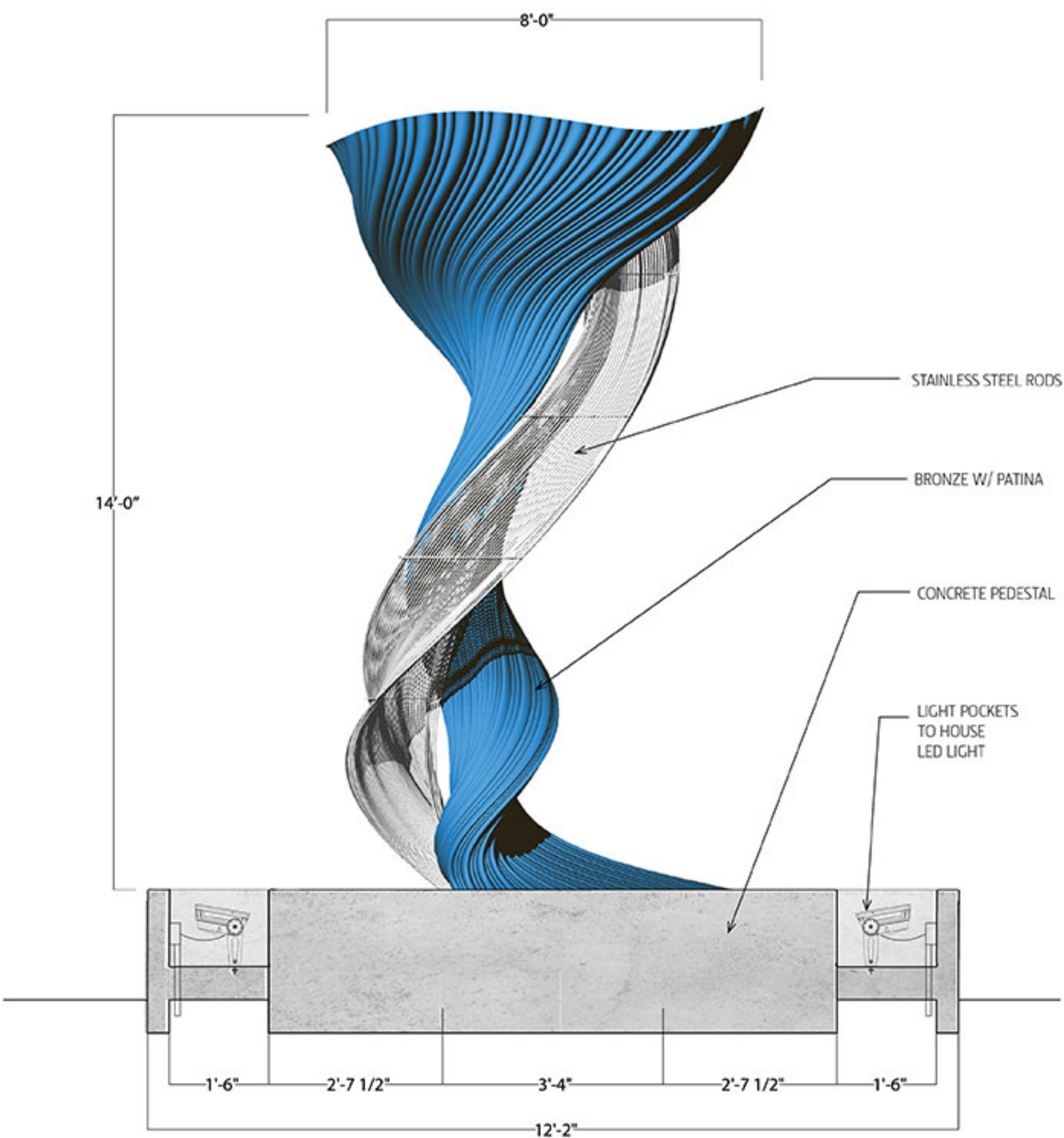
VIEW FROM SOUTH ON 3RD STREET JUST AFTER CROSSING THE BRIDGE



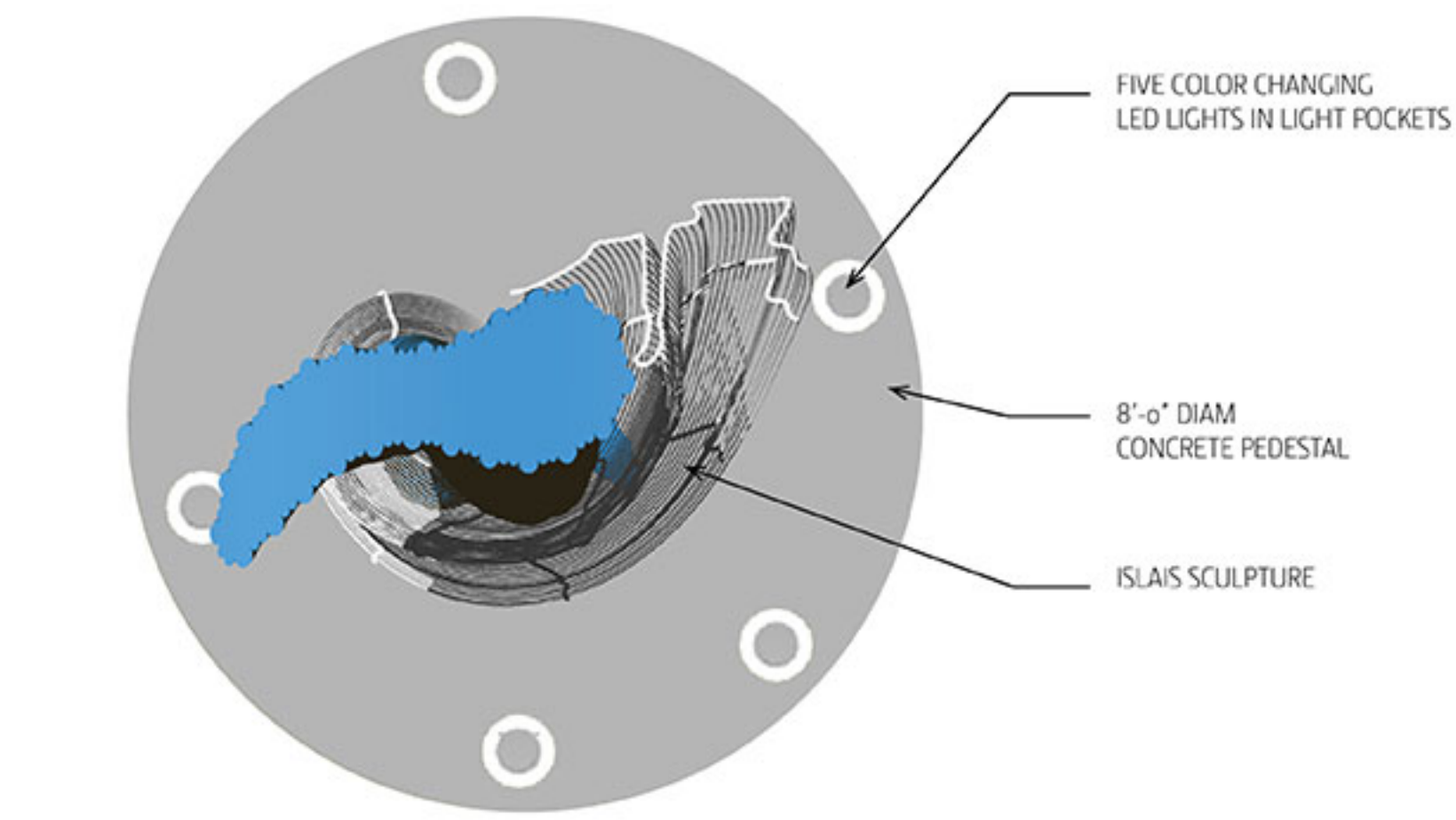
VIEW LOOKING FROM FIREHOUSE TOWARD 3RD STREET AND CARGO WAY INTERSECTION



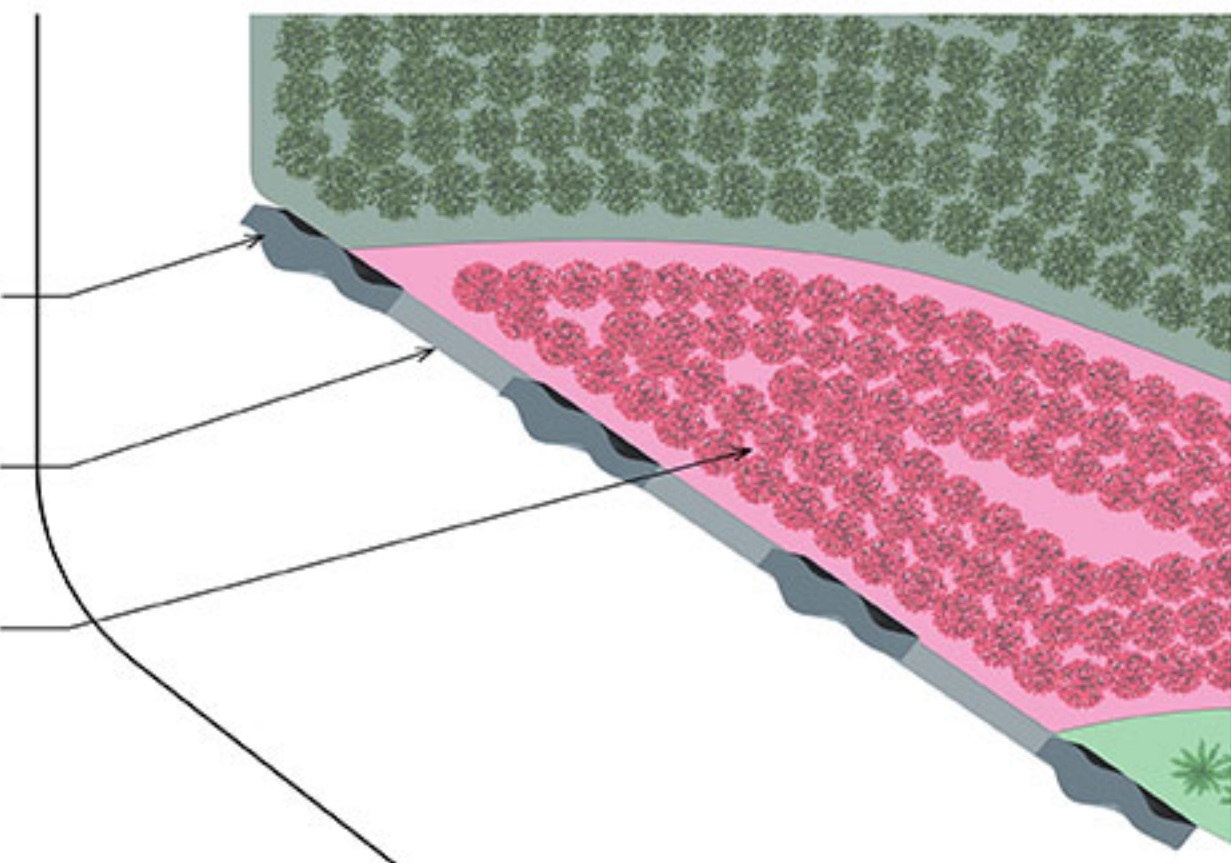
VIEW LOOKING FROM INTERSECTION OF 3RD AND CARGO WAY TOWARD NEW PLAZA



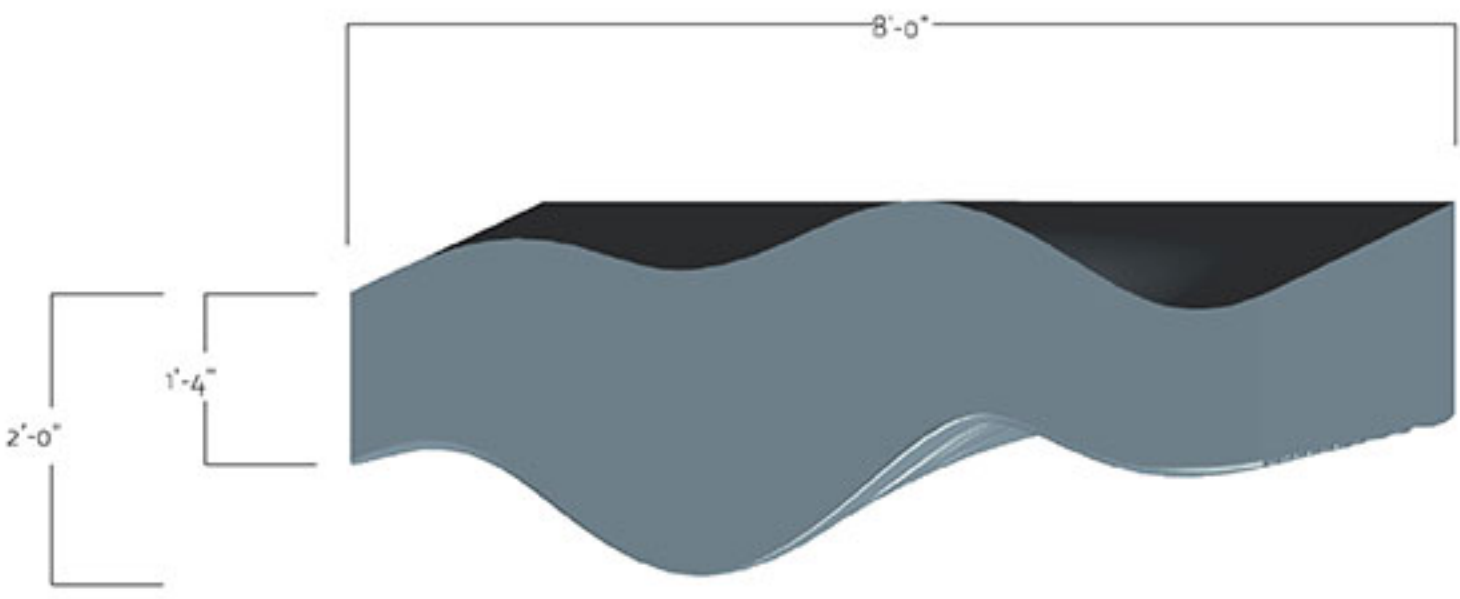
ISLAIS SCULPTURE-
A RIVER AND A COMMUNITY CONSTANTLY CHANGE THEIR FORM



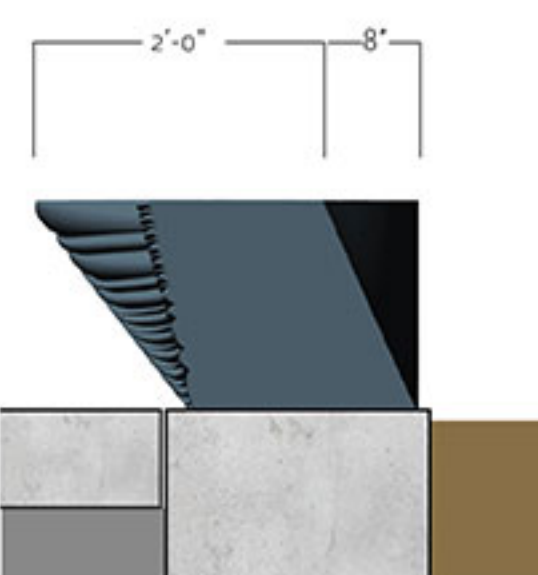
ISLAIS SCULPTURE PLAN



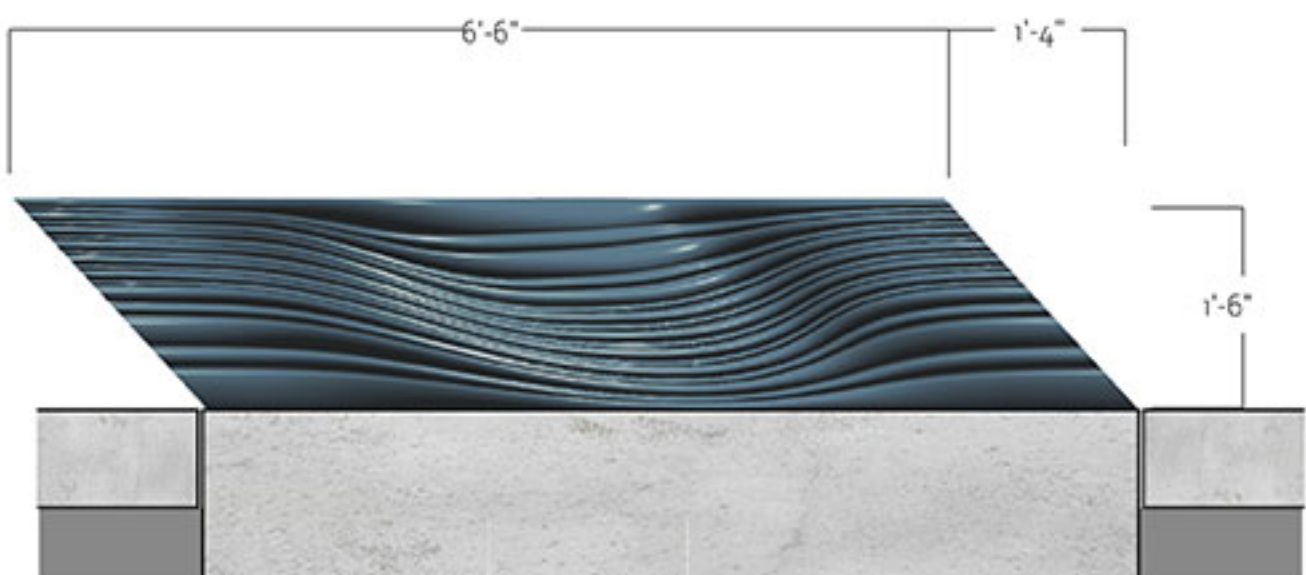
ISLAIS SEATING PLAN



ISLAIS BENCH PLAN



ISLAIS BENCH SIDE ELEVATION



ISLAIS BENCH FRONT ELEVATION

ISLAIS SEATING
SEATING, A TIMELINE, A MEETING PLACE

