



Grand Hyatt SFO

PHASE 1: SCHEMATIC DESIGN

San Francisco Arts Commission Civic Design Review

January 23, 2017

WEBCOR BUILDERS | HORNBERGER + WORSTELL / ED2 INTERNATIONAL JOINT VENTURE

DESIGN CONCEPT



CONTEXT

The Grand Hyatt SFO presents a unique opportunity for the City of San Francisco to welcome visitors with a modern, luxurious hospitality amenity upon arrival at the airport. In designing an on-airport hotel to best leverage this opportunity, the project design-build team seeks to create a unique and quintessentially San Francisco Bay Area experience for guests that is world-class in program, form, and function.

The existing site configuration presents significant challenges, but also a number of advantages. Most prominent among the former, the new hotel must fit in a narrow crescent-shaped plot abutted by freeway ramps and the SFO AirTrain elevated guideway on one side and a newly reconfigured South McDonnell Road and airside apron on the other. But the site also offers close-in views of the airport, focused on a jumbo-jet holding area in the foreground to the east, and panoramic views of the bay and foothills in the distance to the south and west.

The curving geometry of the site is created by the bordering roadways and ramps, but this geometry is not merely incidental and limited to the hotel site. It is also exhibited in the form of the terminals and the architectural icons of the airport: most importantly, the International Terminal Building and the new Air Traffic Control Tower, both of which prominently feature curved elements and lines. The hotel design-build team is mindful that the new Grand Hyatt SFO should be a respectful neighbor of these airport icons, blending calmly and seamlessly with the larger ensemble of airport buildings, while allowing the International Terminal Building and Air Traffic Control Tower to remain the focal points of the airport.

PART I

The architectural parti of the Grand Hyatt SFO seeks to reconcile the site’s crescent form with the rectilinear AirTrain guideway and main arrival axis of the airport. The resulting building form responds to both the orthogonal main axis of the airport and the curved site. It maximizes guest access via the AirTrain station while simultaneously orienting the building toward the best airport and distant

views to the east, south, and west in an elegant curve. The hotel will feel “at home” among its surroundings—by mirroring the curves of the site and surrounding environment instead of resisting them, the building massing will feel graceful and intentional.

Guest rooms will be located on floors raised above the maze of off-ramps and guideways, with service spaces occupying less desirable areas on lower floors, facing north and west. The lobby, key meeting spaces, and restaurant will face southeast, and all will feature views to the surrounding airport and distant hills. As an airport hotel, 60% of the guests are expected to arrive via the AirTrain, so, for direct access and convenience, the main lobby will be located on the fourth floor, connected by a pedestrian bridge to the hotel AirTrain station. Upon arrival at the fourth floor reception area, visitors will be immediately presented with panoramic views beyond the reception area to jumbo jets and the active airside just beyond the hotel site. A second, ground-level entrance on the south side of the building will allow guests to easily arrive via car or bus, while the hotel’s loading dock and service entrance will be discreetly located on the north side.

DEFINING FEATURES

The Grand Hyatt SFO will be a light-filled, modern, and vibrant place to visit. The building is being designed from the inside out to fully leverage the benefits of its program spaces and create a unique sense of place. Interior spaces will flow seamlessly from one to another. Guests will move from lobby to market to restaurant in bright, open, view-focused circulation spaces that will feel both comfortable and inviting. Guestrooms will be spacious, amenity filled places of retreat and relaxation. The restaurant and market will feature local sustainable food. Art from Bay Area artists will feature prominently on the hotel site as well as in the public spaces and guestrooms.

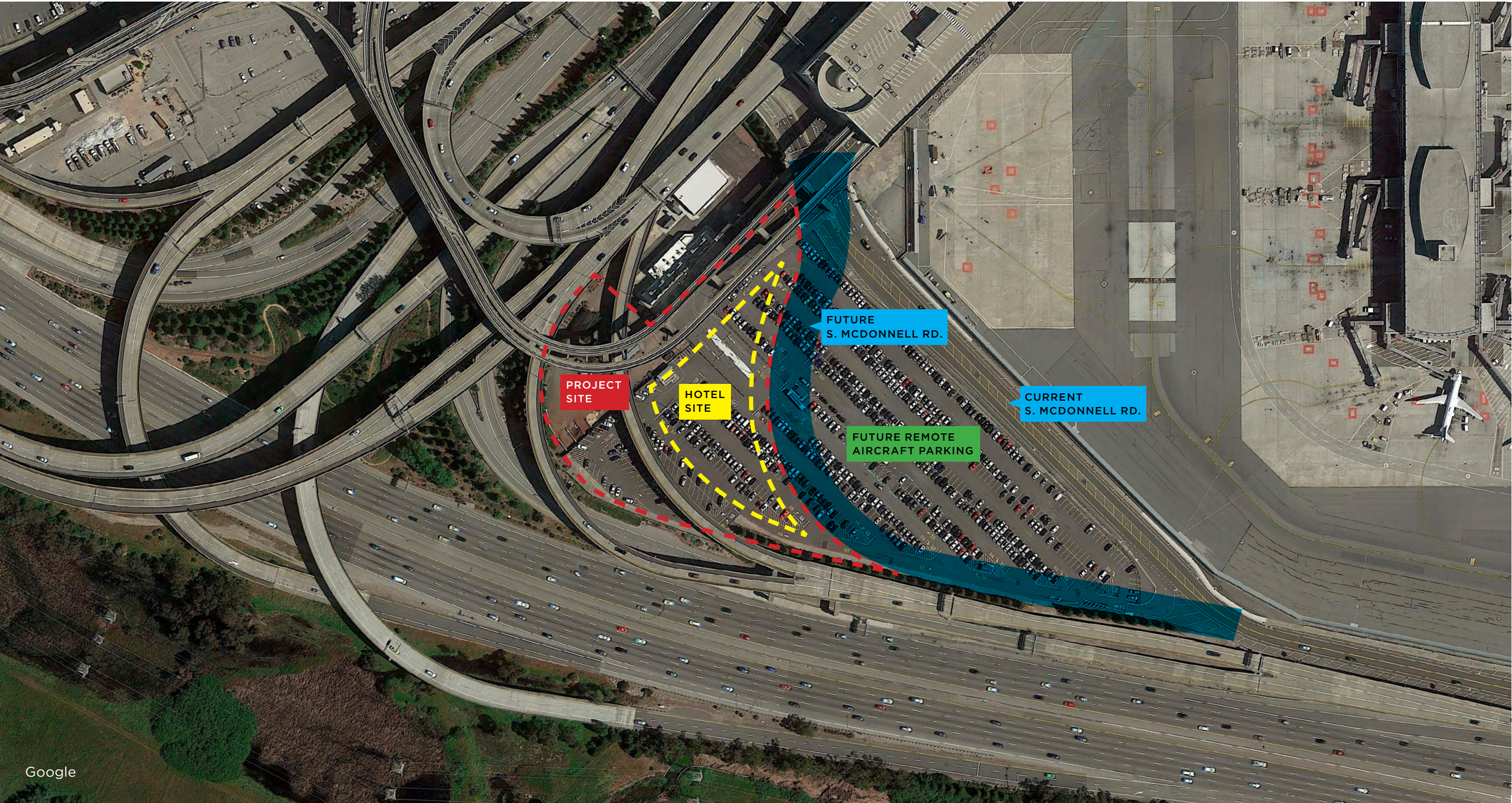
The Grand Hyatt SFO will be a memorable and uplifting destination for world travelers, set within a busy and modern airport campus, at the center of a region known for its creative expression and innovation.



01

Introduction

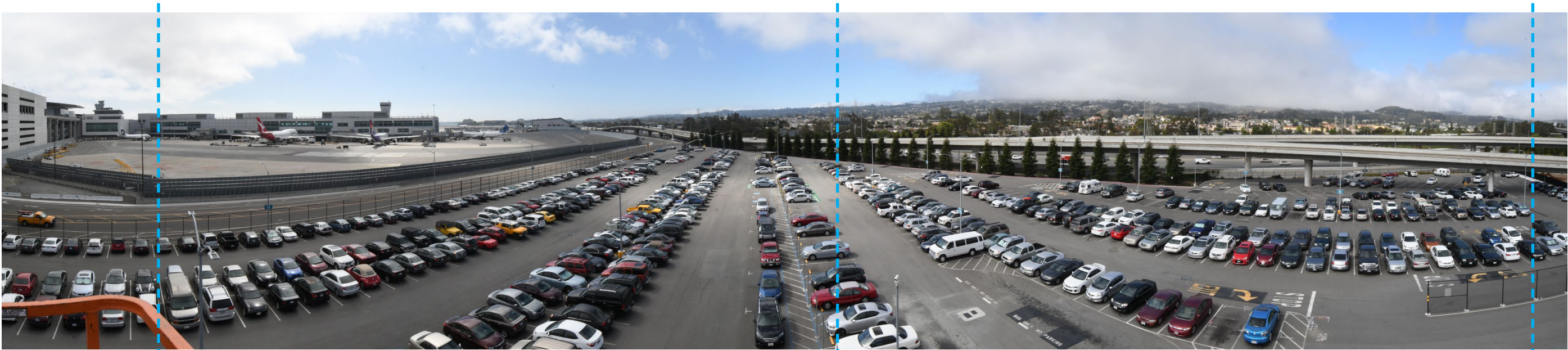
Project site



Site overview



Views from site (100 ft)



EAST

SOUTH

WEST



WEST

NORTH

NORTHEAST

02

Elevations and section

East view (previous)



East view (current)



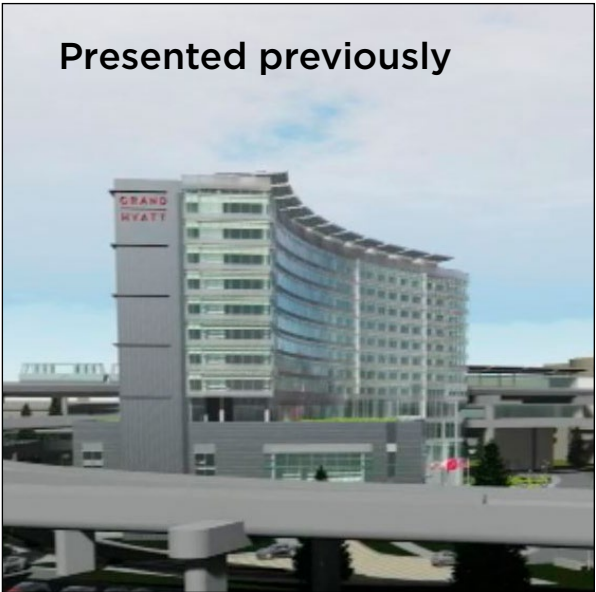
West view



Northwest view



Southwest view

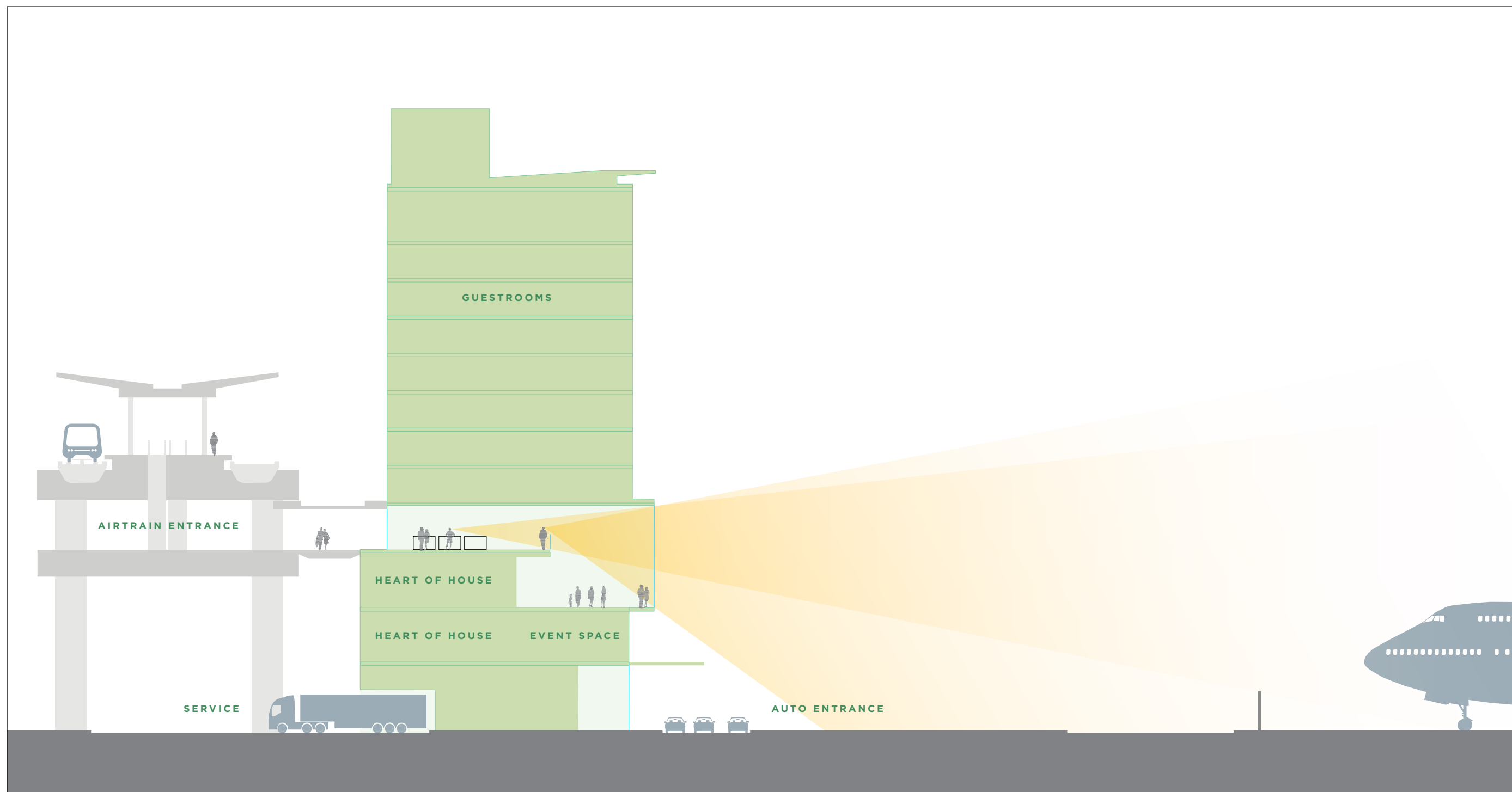


East detail, bris soleil



Hybrid section

ENTRY, LOBBY, RESTAURANT





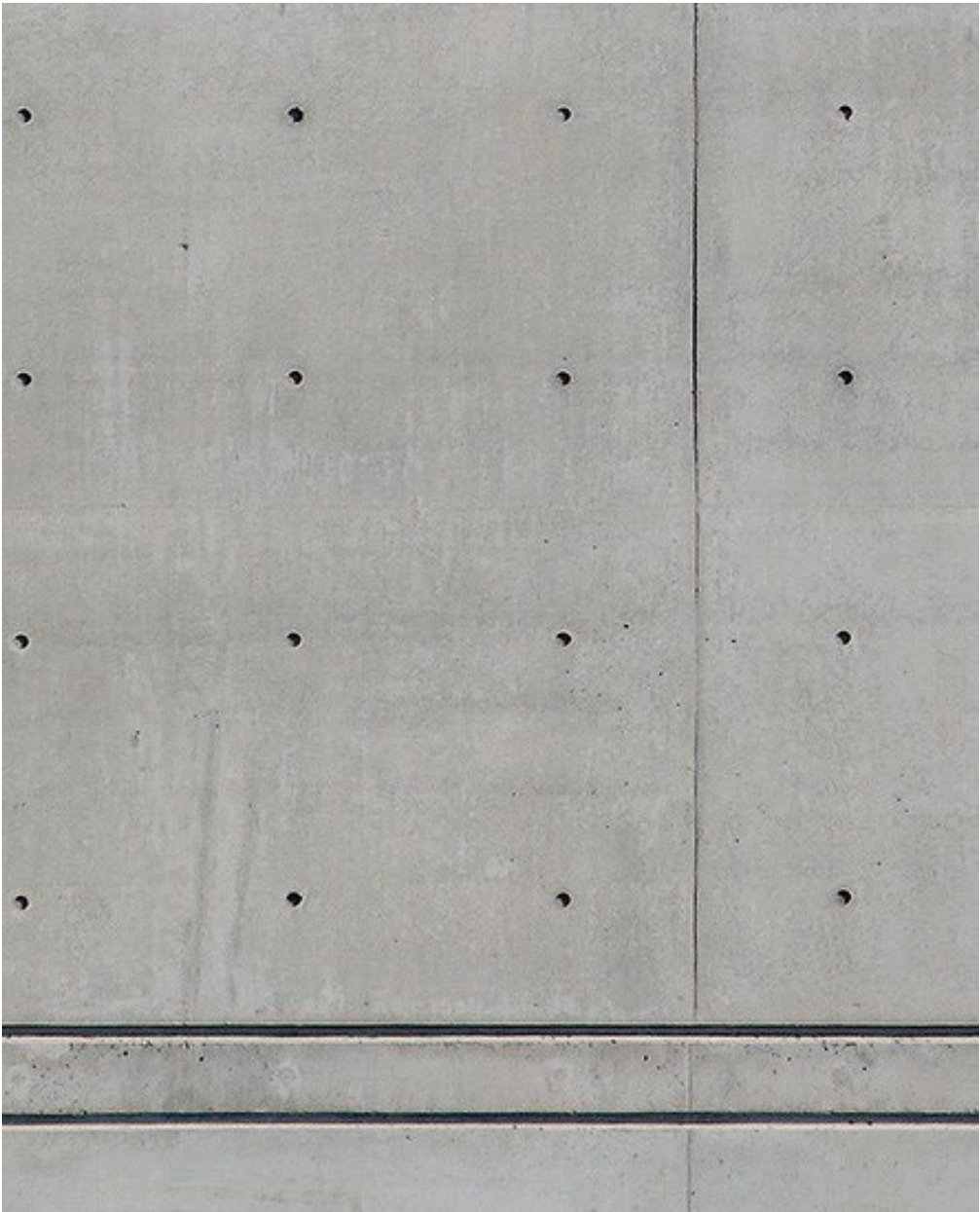
03

Surfaces

Surfaces: Opaque wall

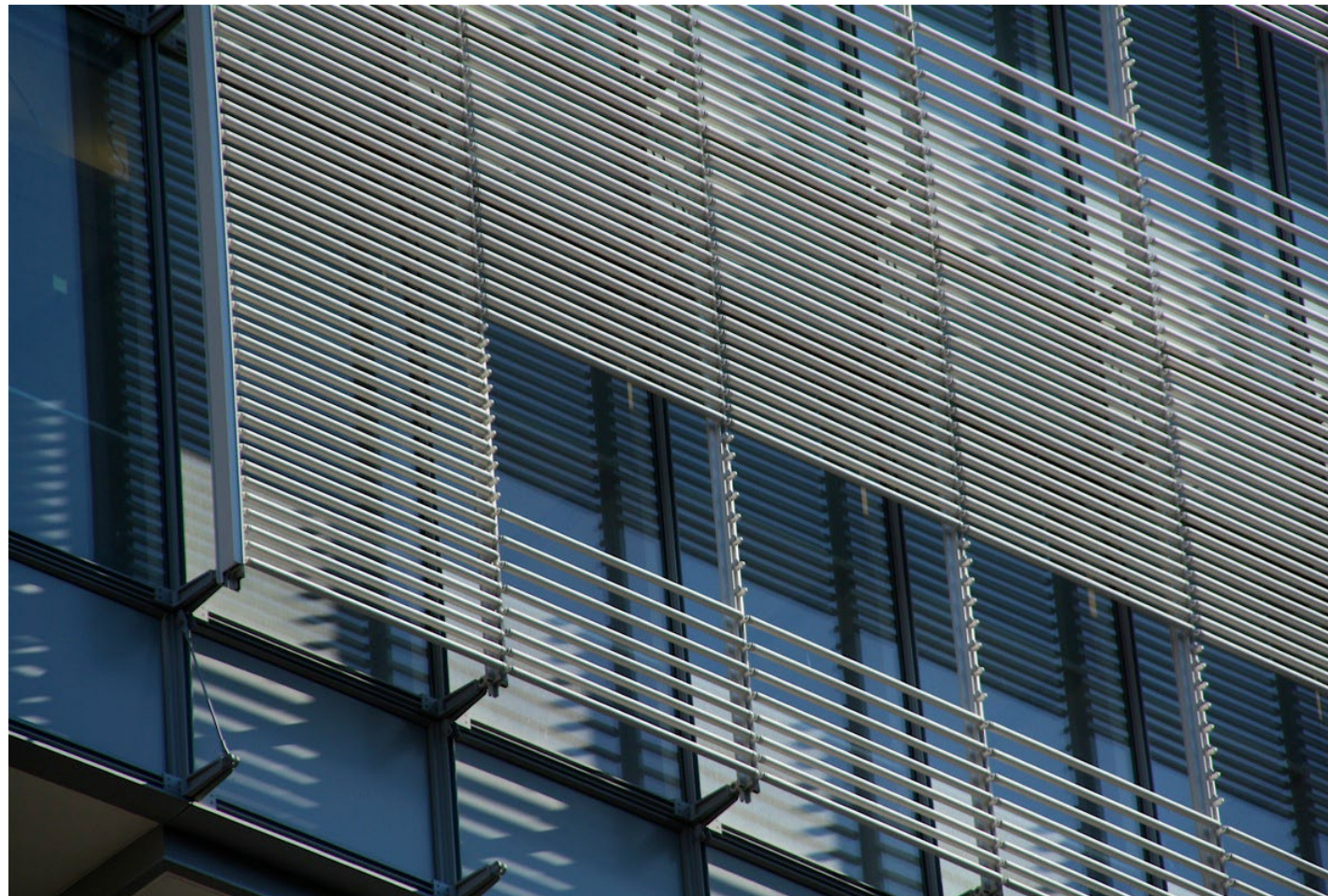


Metal panels



Concrete panels

Surfaces: Specialty

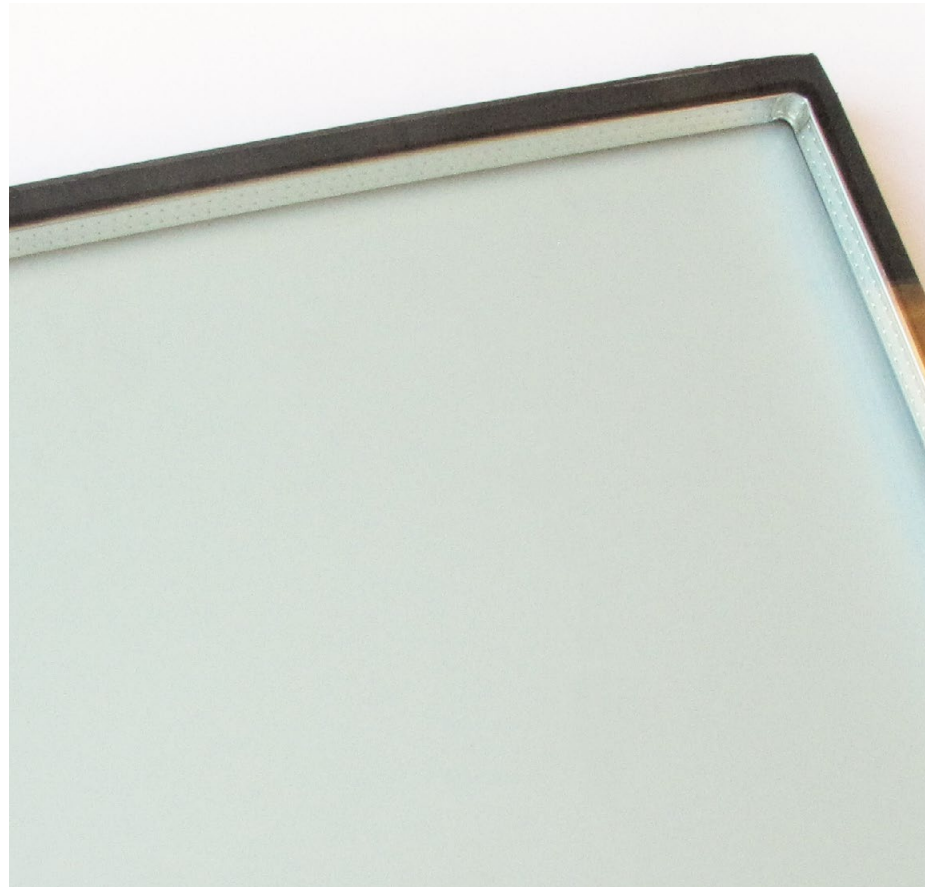


Brise soleil



Porte cochere canopy

Surfaces: Glass wall



Solar Ban 70



Solar Ban 72 / Clear

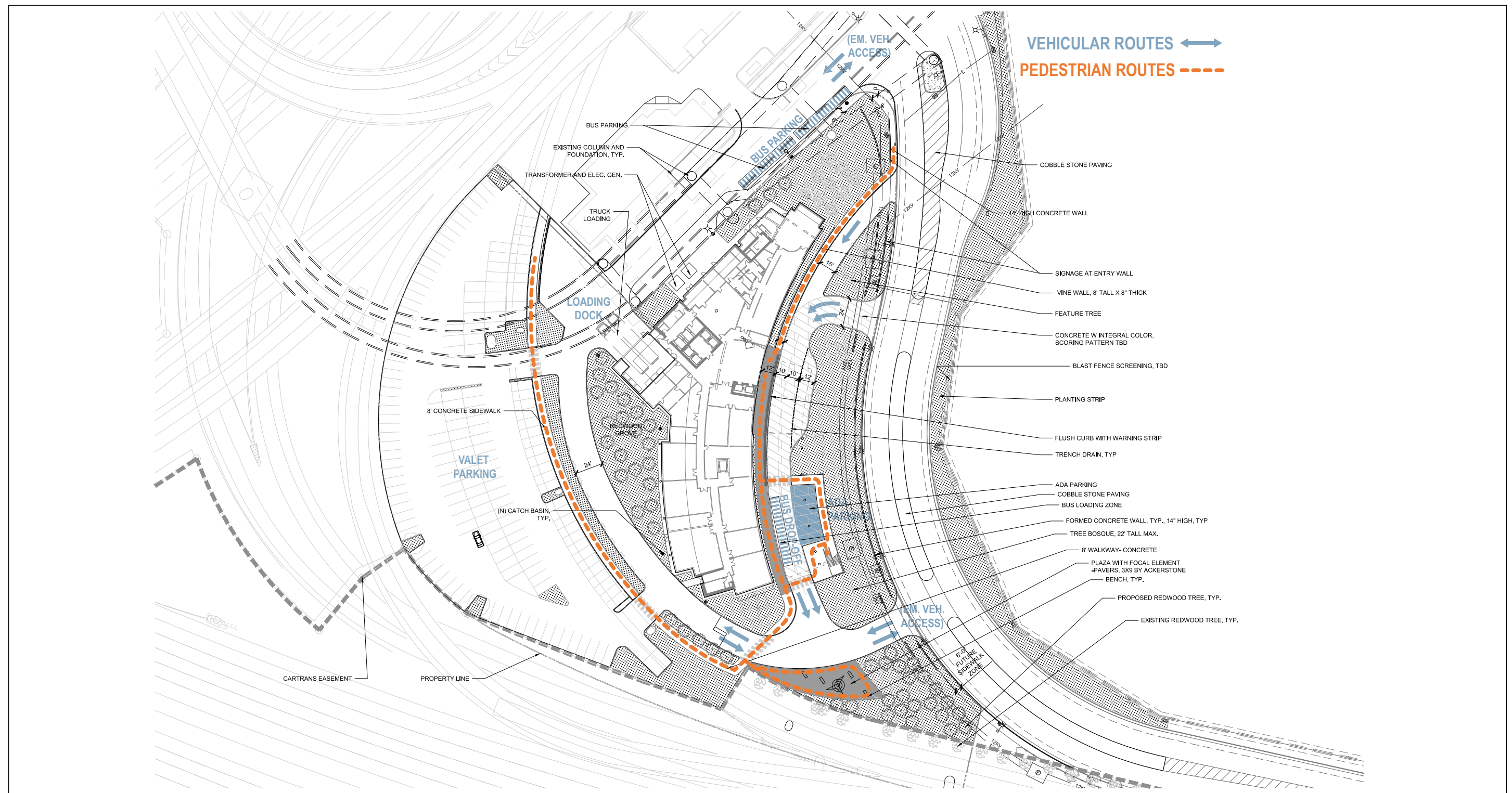


Solar Ban 90

04

Landscape

Landscape: Site diagram



Landscape: Site plan



Landscape: Plant types



TREE SPECIES



ARBUTUS 'MARINA' MULTI-TRUNK
STRAWBERRY TREE



QUERCUS AGRIFOLIA
COAST LIVE OAK



CORNUS OMEIENSE 'SUMMER PASSION'
DOGWOOD



QUERCUS ROBER X ALBA
SKINNY GENES



POPULUS TREMULA 'ERECTA'
SWEDISH ASEPN



QUERCUS ALBA 'FOREST NIGHT'
WHITE OAK



SEQUOIA SEMPERVIRENS
COAST REDWOOD

SHRUBS AND GROUND COVER BY ZONE

① SOUTH MCDONNELL RD

ARCTOSTAPHYLOS UVA-URSI 'WOOD'S COMPACT' *
BACCHARIS PILULARIS 'TWIN PEAKS' *
CEANOTHUS 'CENTENNIAL' *
RHAMNUS CALIFORNICA 'SEAVIEW' *
LEYMUS TRITICOIDES 'LAGUNITA' *
LIBERTIA PEREGRINIS *
ERIOGONUM ARBORESCENS *
ARTEMISIA CALIFORNICA *
LIMONIUM PEREZIARBUS 'MARINA'

② REDWOOD UNDERSTORY

ARCTOSTAPHYLOS UVA-URSI 'RADIANCE' *
FRANGULA CALIFORNICA 'SEAVIEW' *
FRANGULA CALIFORNICA 'EVE CASE' *
RHODODENDRON OCCIDENTALE *
LEYMUS TRITICOIDES 'LAGUNITA' *
ACHILLEA MILLEFOLIUM 'SONOMA COAST' *
ASTELIA CHATHAMICA 'SILVER SPEAR'
BLECHNUM SPICANT *
CLINPODIUM DOUGLASII *
HEUCHERA MAXIMA *
IRIS DOUGLASIANA *
WOODWARDIA FIMBRIATA *
CORNUS OMEIENSE 'SUMMER PASSION'

③ PARKING LOT | PEDESTRIAN CONNECTOR

MUHLENBERGIA RIGENS *
FESTUCA CALIFORNICA *
OPHIPOGON PLANISCAPUS *
NIGRESCENS LOMANDRA LONGIFOLIA 'BREEZE'

④ PARKING LOT | ISLANDS

CEANOTHUS 'DARK STAR' *
CEANOTHUS 'LOUIS EDMUNDS' *
CEANOTHUS 'CENTENNIAL' *
FRANGULA CALIFORNICA 'SEAVIEW' *
FRANGULA CALIFORNICA 'EVE CASE' *

⑤ PARKING LOT | PERIMETER

CEANOTHUS 'DARK STAR' *
CEANOTHUS 'CENTENNIAL' *
RHAMNUS CALIFORNICA 'SEAVIEW' *
CEANOTHUS 'LOUIS EDMUNDS' *
CISSUS ANTARCTICAVITIS CALIFORNICA 'RUSSIAN RIVER'

⑥ TREE BOSQUE (NORTH)

POPULUS TREMULA 'ERECTA'
ANEMANTHELE LESSONIANA 'SIROCCO' A
STELIA CHATHAMICA 'SILVER SPEAR'
MUHLENBERGIA RIGENS *
LOMANDRA LONGIFOLIA 'BREEZE' *

⑦ TREE BOSQUE (SOUTH)

ARCTOSTAPHYLOS UVA-URSI 'RADIANCE' *
ANEMANTHELE LESSONIANA 'SIROCCO'
MUHLENBERGIA RIGENS *
LEYMUS TRITICOIDES 'LAGUNITA' *
ACHILLEA MILLEFOLIUM 'SONOMA COAST' *
HEUCHERA MAXIMA *
PEROVSKIA ATRIPLICIFOLI

⑧ BUILDING FRONTAGE

LEUCODENDRON 'SAFARI GOLDSTRIKE' +
CHONDROPETALUM TECTORUM
ACANTHUS MOLLIS
WOODWARDIA FIMBRIATA *
FICUS PUMI

NOTE:
+ ON SFO CORE PLANT LIST
* CA NATIVE

05

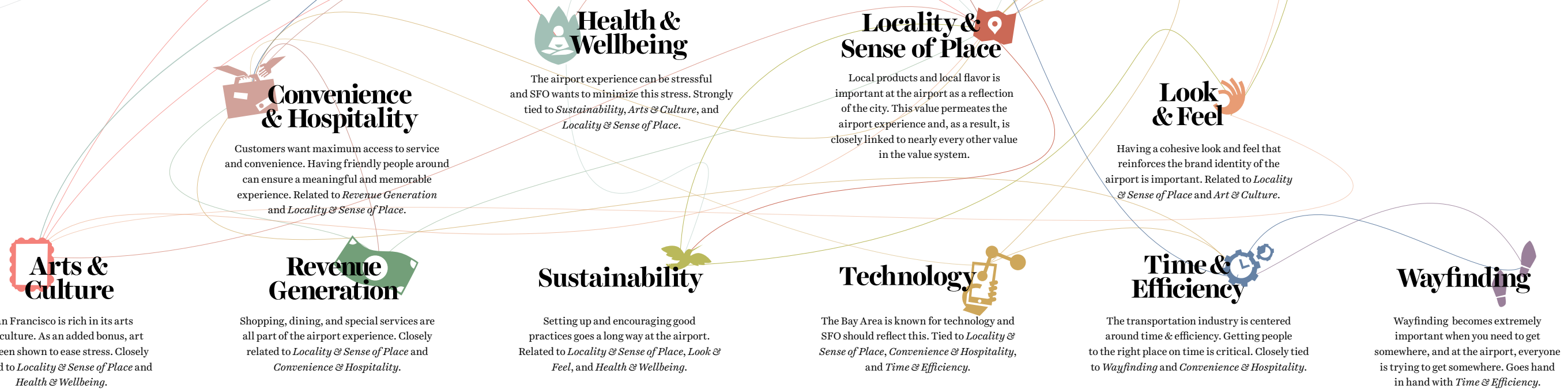
Community outreach

Community: Stakeholders



SFO stakeholder groups

The Value System



SFO Value System Graphic from "The Principles of R.E.A.C.H."

06

3D view

Stills from 3D view

