



SFMTA
Municipal Transportation Agency

SAN FRANCISCO
**PUBLIC
WORKS**

CASTRO



CIVIC DESIGN REVIEW PHASE 1

MARCH 2018

CONTENTS

PROJECT OVERVIEW

PROPOSED IMPROVEMENTS



SFMTA's **goal** and standard are to **provide uninterrupted elevator access** at all underground stations. This standard has been adopted by The Central Subway Project. SFMTA is working to incorporate the standard in existing stations by **upgrading existing** and **adding new elevators** to create elevator redundancy.

This is a list of projects:



ELEVATORS

SFMTA SUBWAY SAFETY AND RELIABILITY UPGRADE PROJECT at the following stations:

- Van Ness
- Church
- Castro
- Forest Hill
- Powell
- Central subway project



ESCALATORS

ESCALATOR MODERNIZATION PROJECT PHASE II
Replacement of 17 escalators in the subway system.



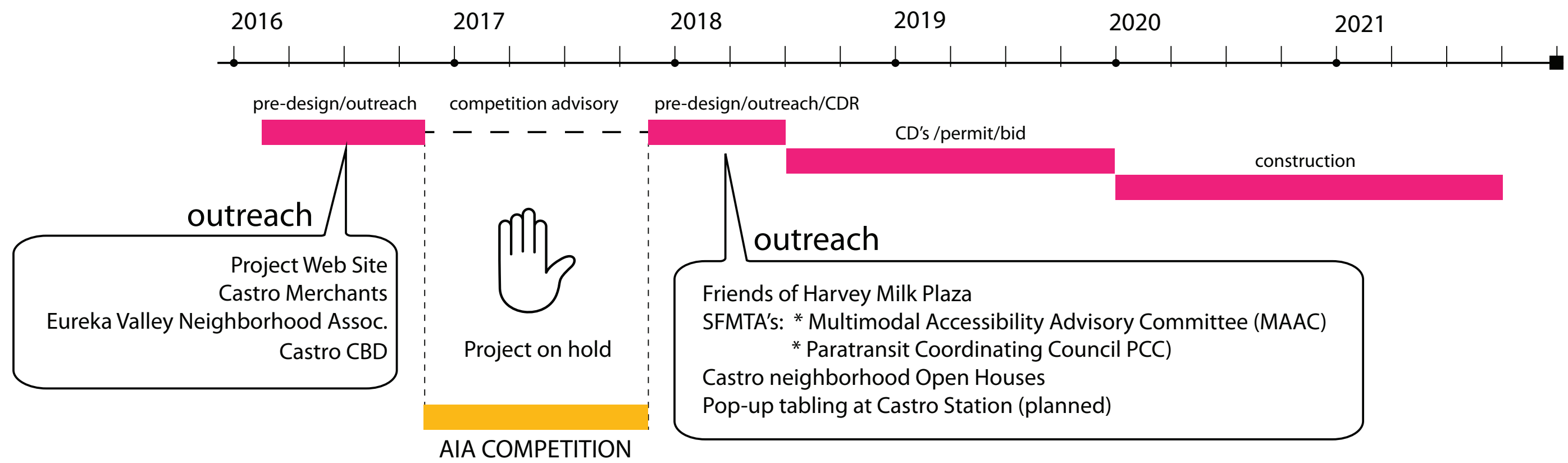
PROJECT SCOPE OF WORK

Add on the south-side of the **Castro** Station only:

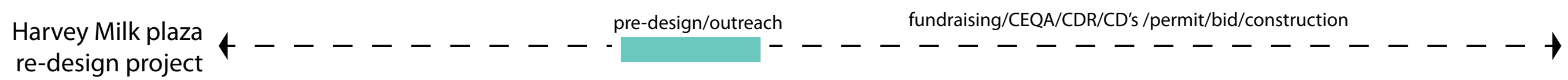
- new elevator**
- accessible path**

PROJECT TIMELINE & OUTREACH ACTIVITIES

CASTRO STATION ACCESSIBILITY IMPROVEMENTS TIMELINE



HARVEY MILK PLAZA IMPROVEMENTS PROJECT TIMELINE



Castro Theatre

Building beyond station

Rainbow Flag

Commons Building



Market Street - South side

QUALIFICATIONS FOR ELEVATOR LOCATION

Adjacent to station's:

- main entrance
- concourse level
- station agent
- fare gates
- platform trains

southwest corner of Market and Castro streets, which connects to additional transit lines and merchant corridor

Provides **optimal access to all levels** of the station

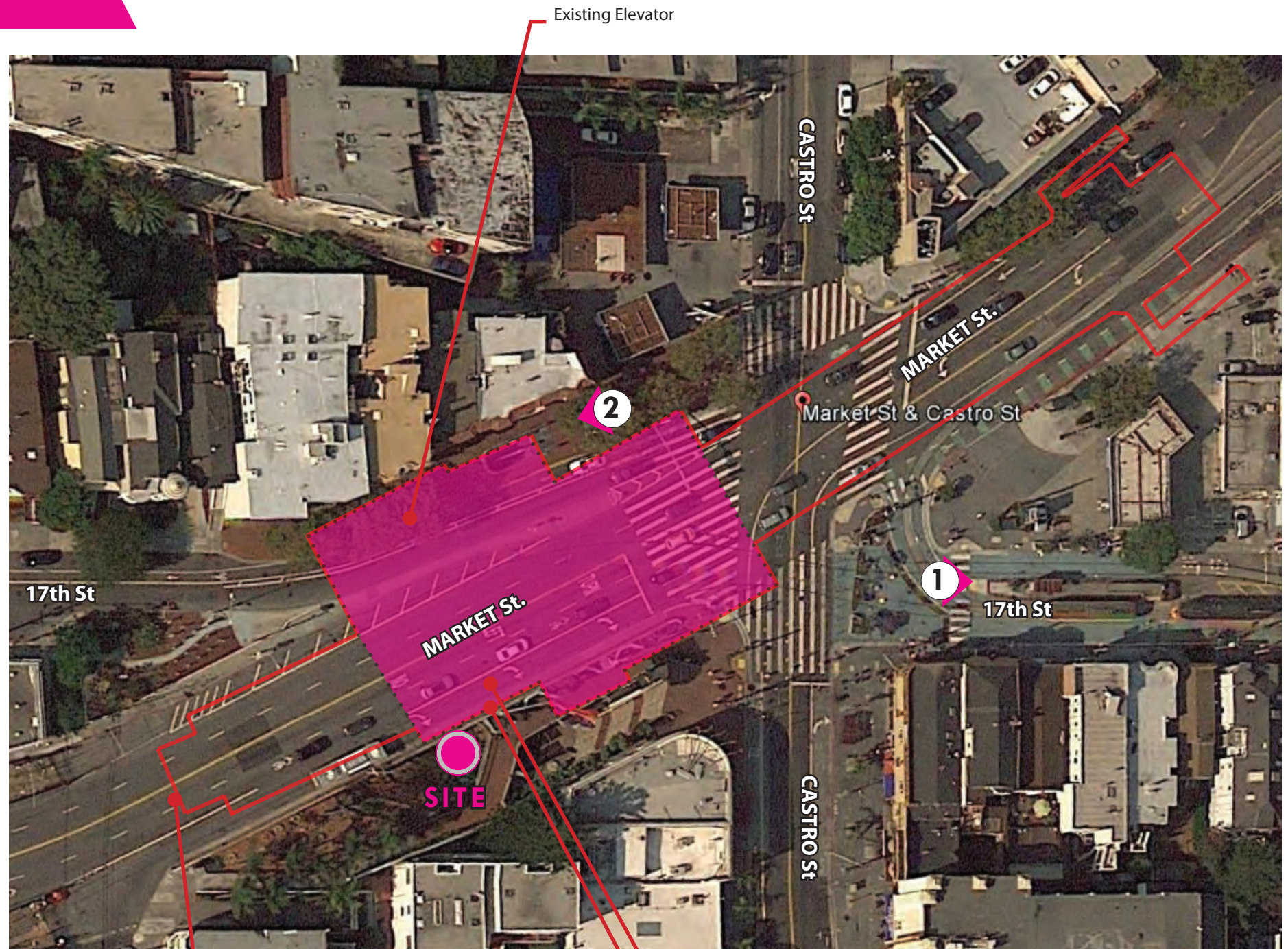
OTHER ELEVATOR LOCATIONS CONSIDERED BUT NOT CHOSEN



F line stop - 17th St & Castro St



Station entry, Market St. - North side



Outline of Castro Muni Station below . NOT TO SCALE
 Station Agent
 Concourse Level

CASTRO

SITE | STREET LEVEL



1 Market Street - Bus stop



2 Upper walkway



3 Fenced off green space



4 Trees in sunken plaza



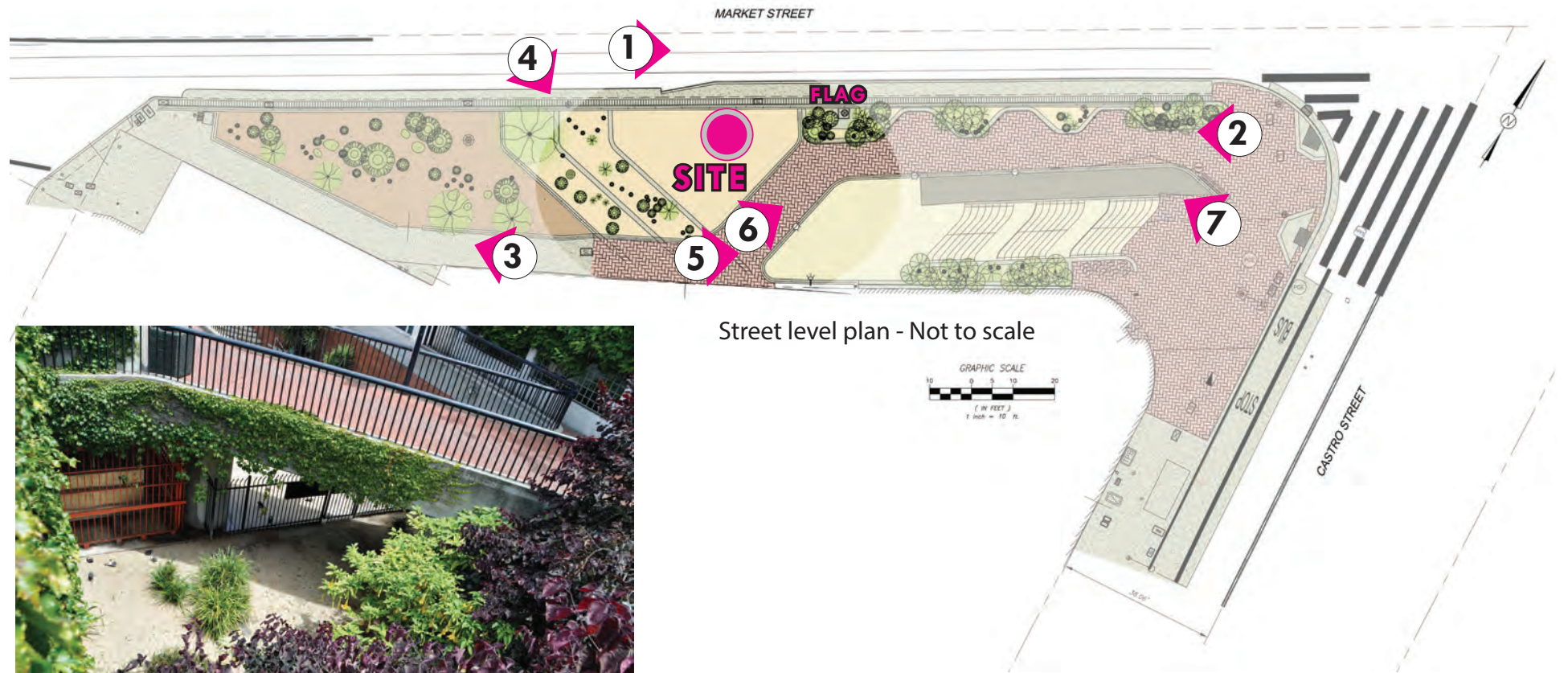
5 Upper walkway



6 Rainbow flag



7 Upper walkway





1 Exterior stairs



2 Concourse entrance



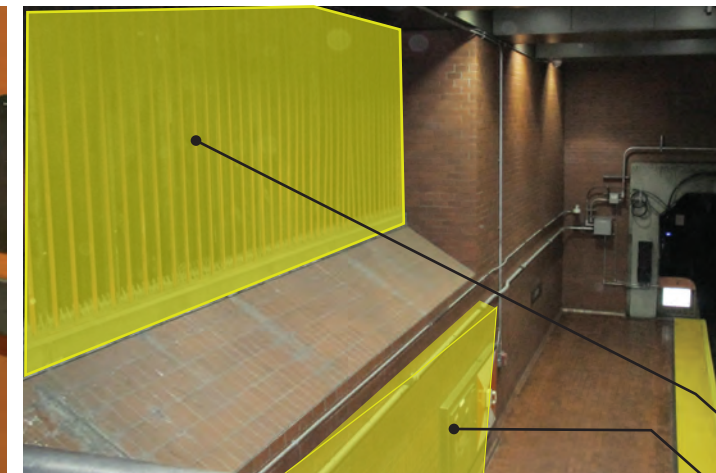
3 Concourse entrance



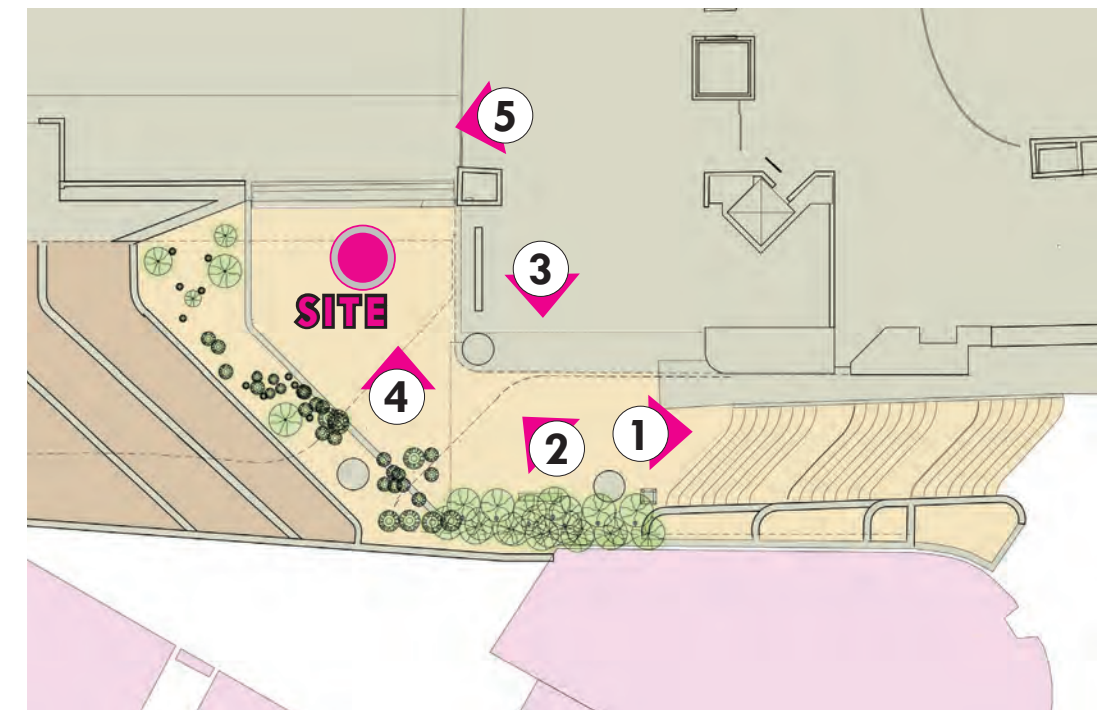
4 Sunken Plaza



Exterior elevator



5 View of platform level

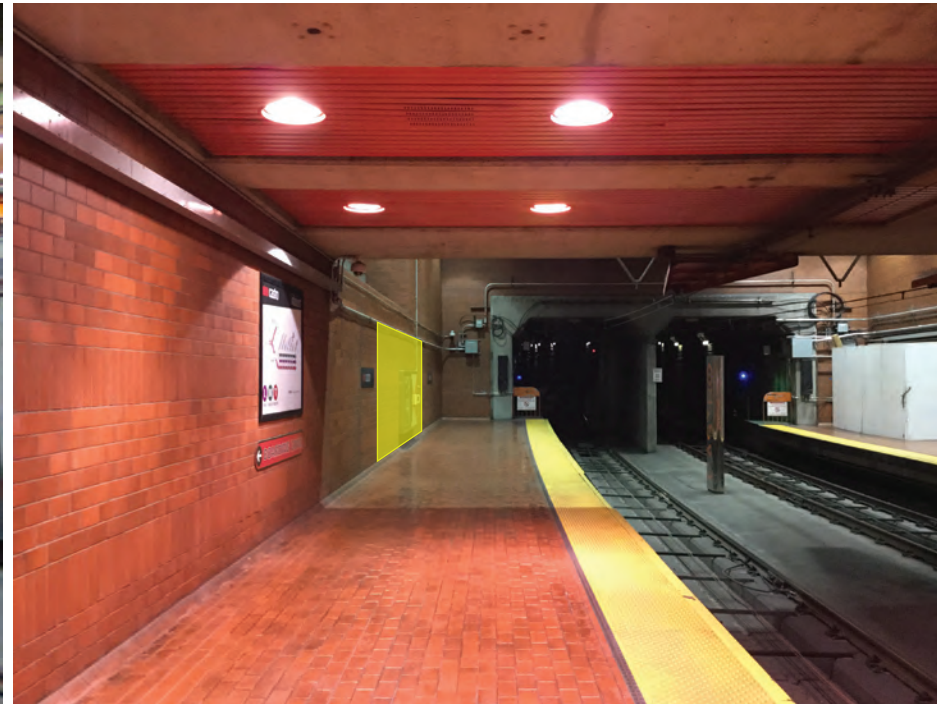


Concourse level plan - Not to scale

New window panel
New opening for elevator



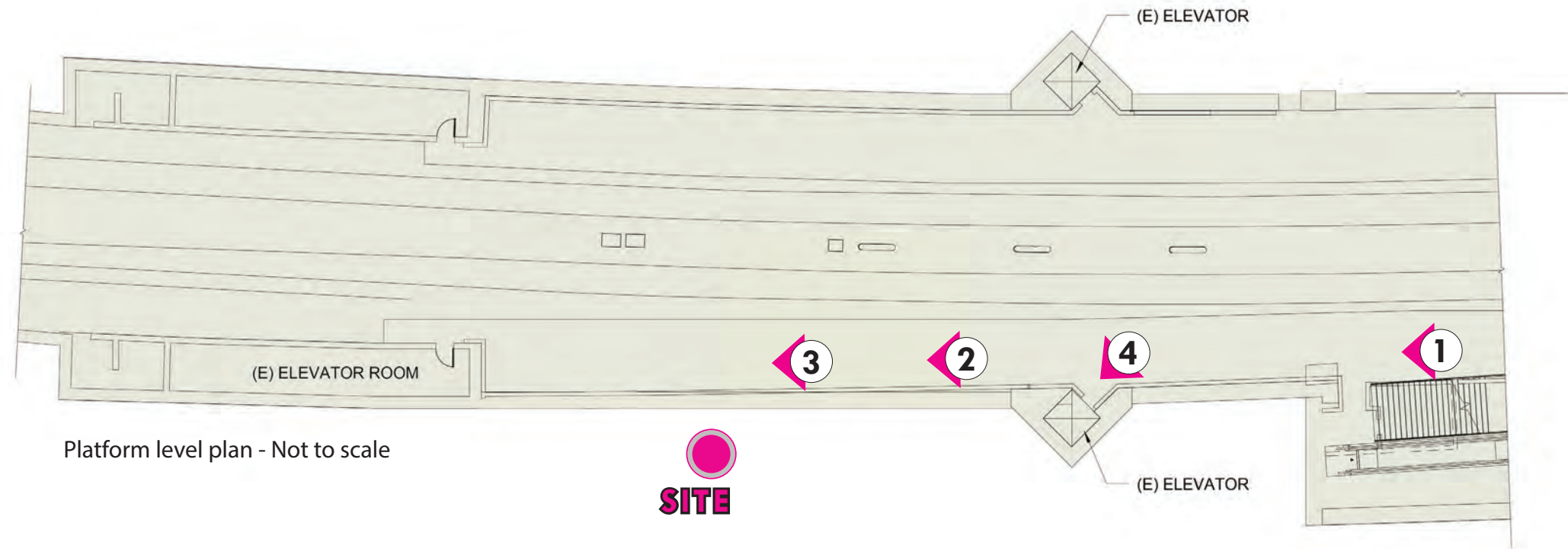
1, 2 & 4 View of platform



New opening for elevator exit



4 Existing elevator

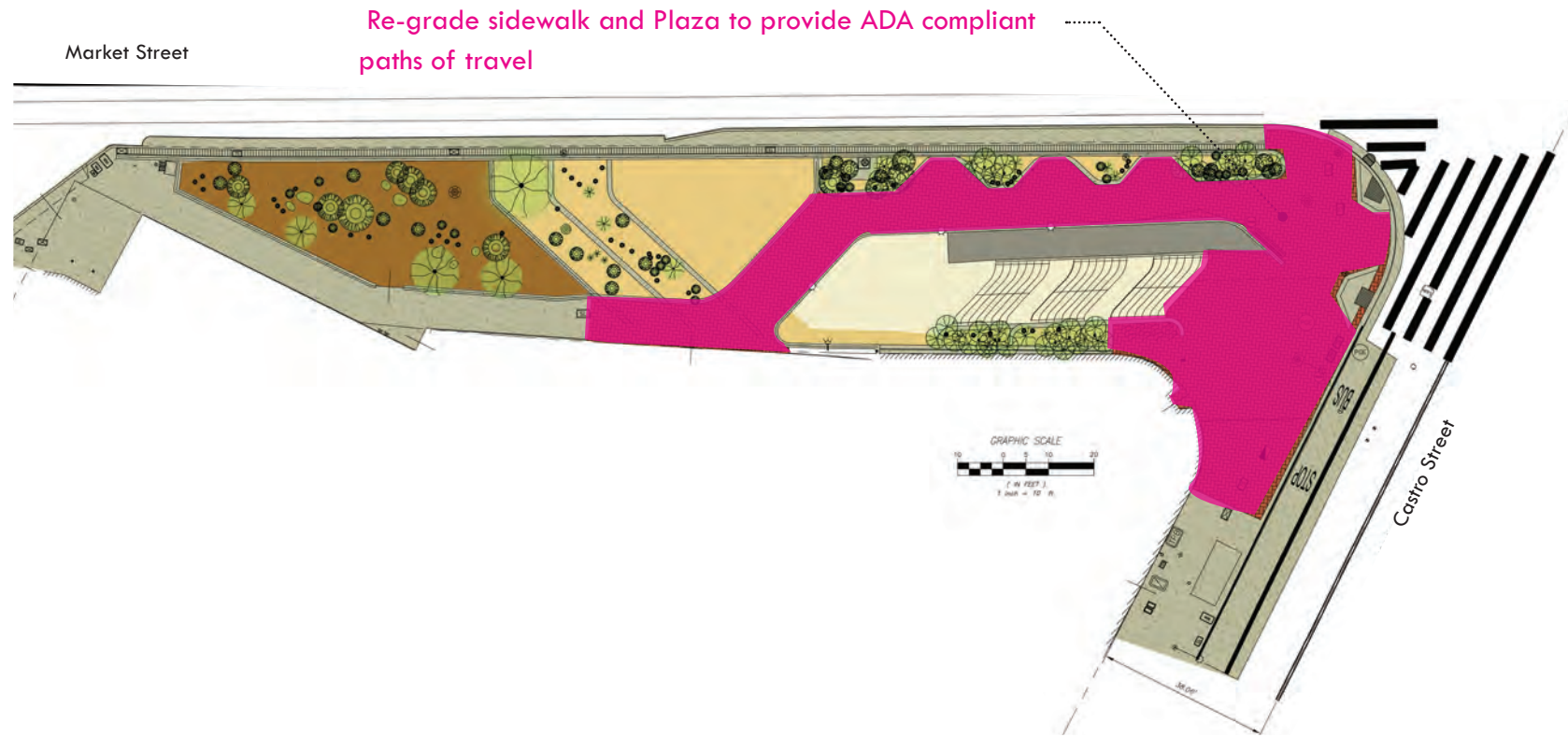


Platform level plan - Not to scale

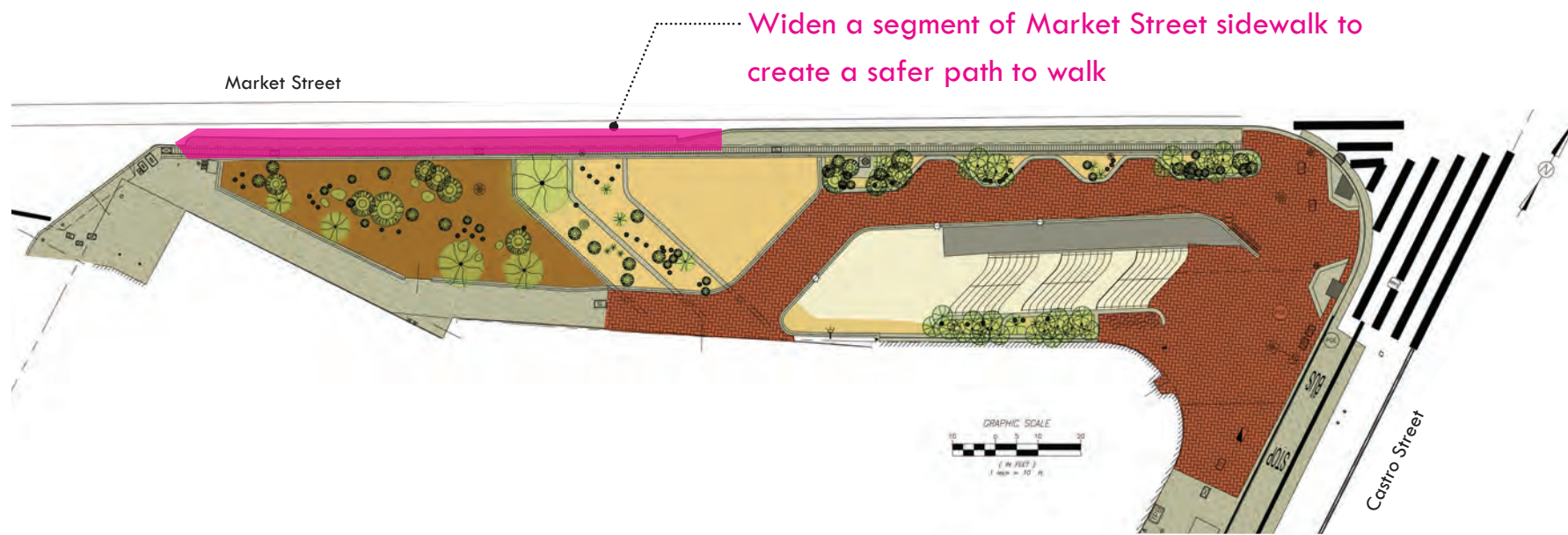
SITE

PROPOSED IMPROVEMENTS

1. STREET LEVEL - REGRADE SIDEWALK AND PLAZA GRADING



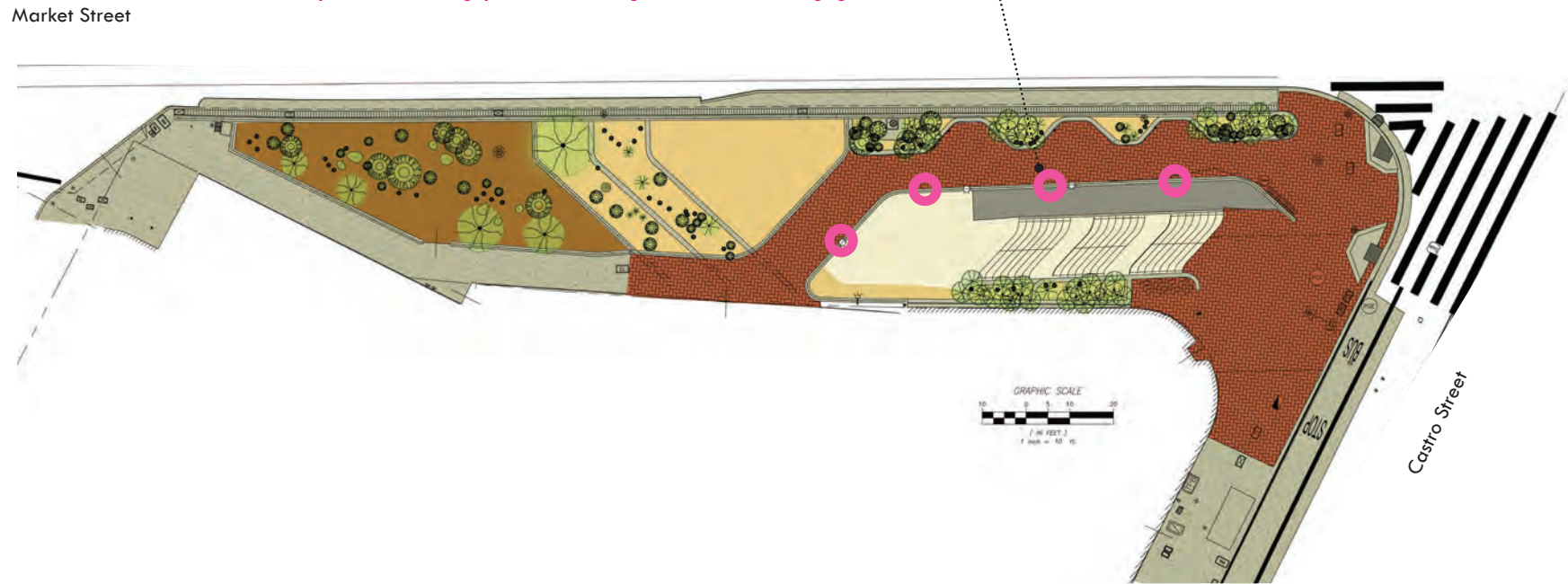
2. STREET LEVEL - WIDEN SIDEWALK AT MARKET STREET BUS STOP



PROPOSED IMPROVEMENTS

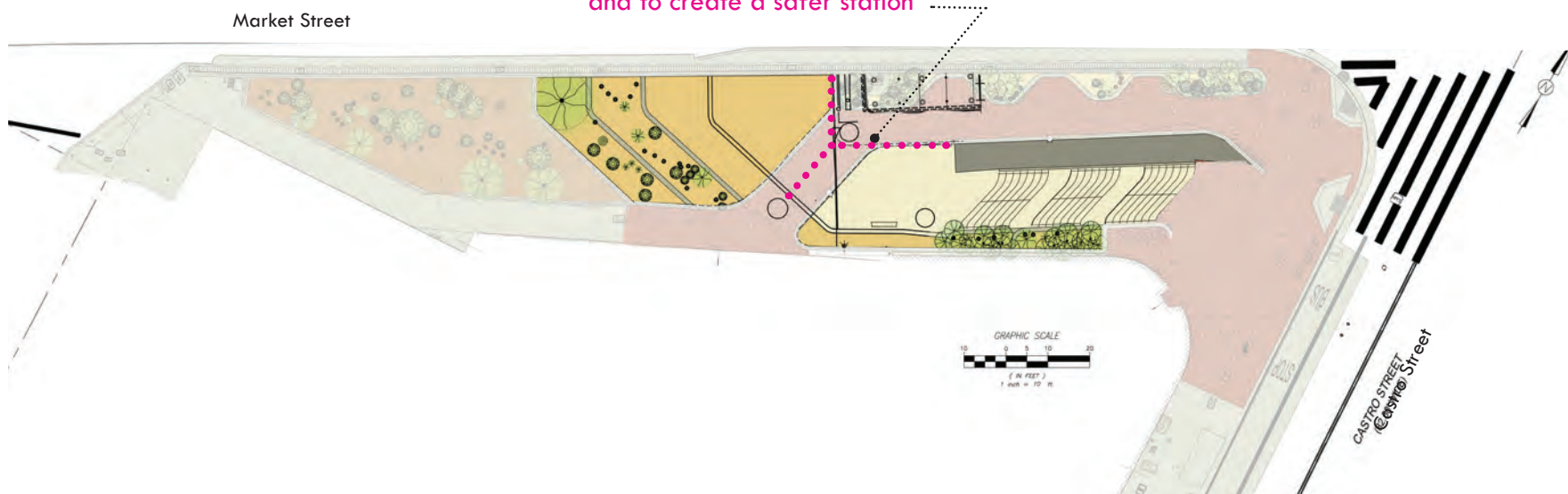
3. STREET LEVEL □ REPLACE PLAZA LIGHT FIXTURES

Replace existing pedestrian light fixtures along guardrails



4. MEZZANINE LEVEL □ IMPROVE SECURITY FENCING

Improve security fencing to integrate with elevator and to create a safer station



LIGHTING UPGRADE OPTIONS



EXISTING FIXTURES



SPOTLIGHTS



VERTICAL FRAME



VERTICAL TORCH

SECURITY FENCING OPTIONS



LOCATION IMAGE



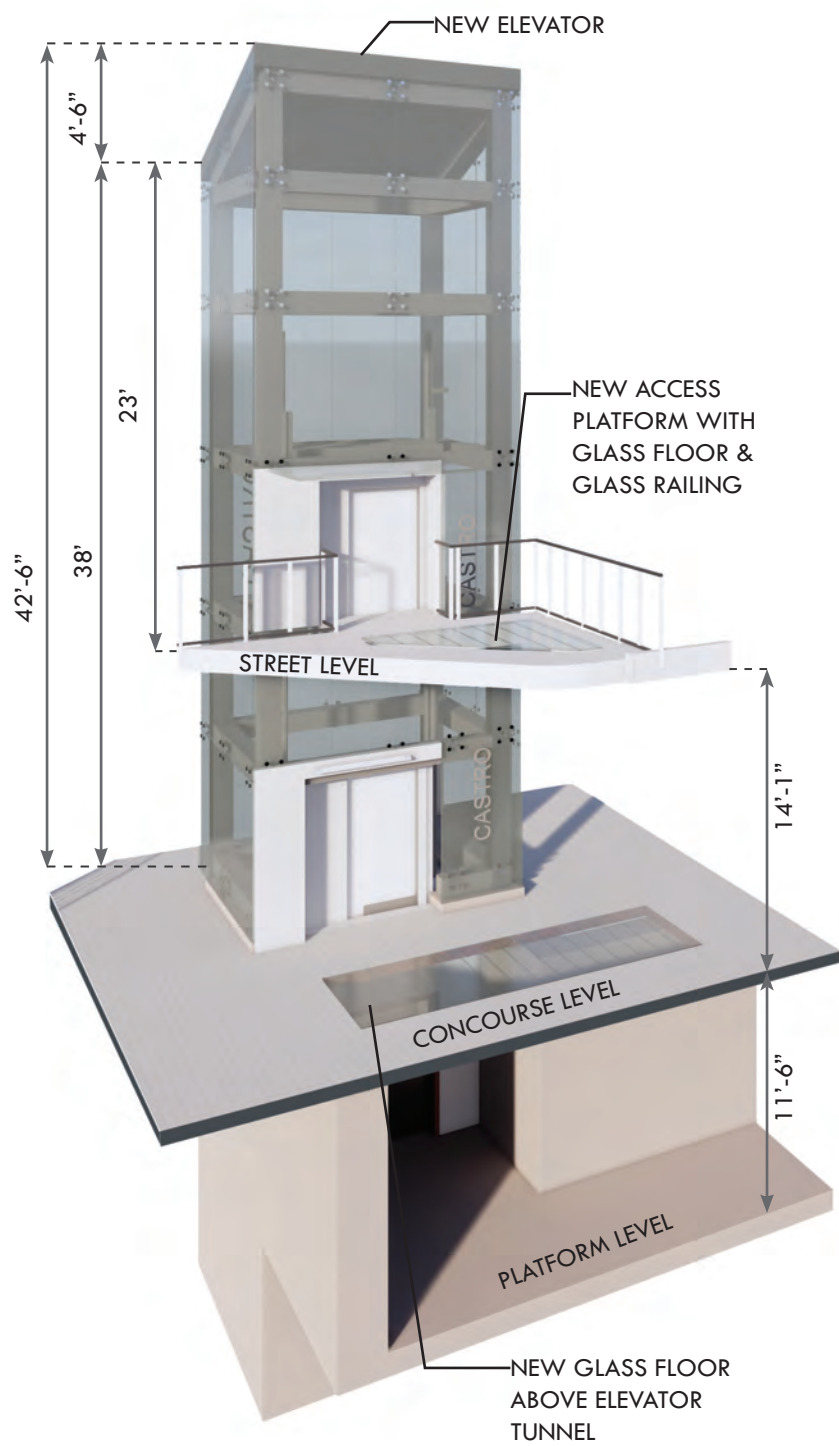
STATION STANDARD



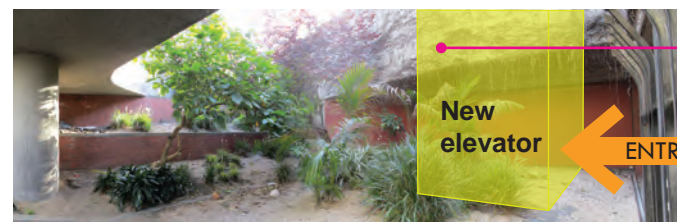
EXTENDED ELEVATOR SKIN

PROPOSED IMPROVEMENTS

5. ALL LEVELS - ADD ADA ACCESSIBLE ELEVATOR



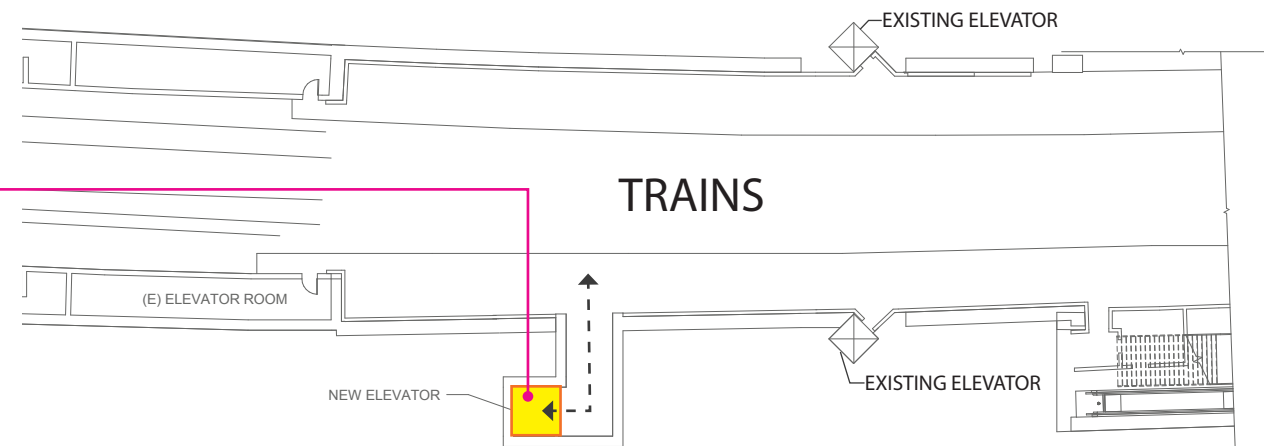
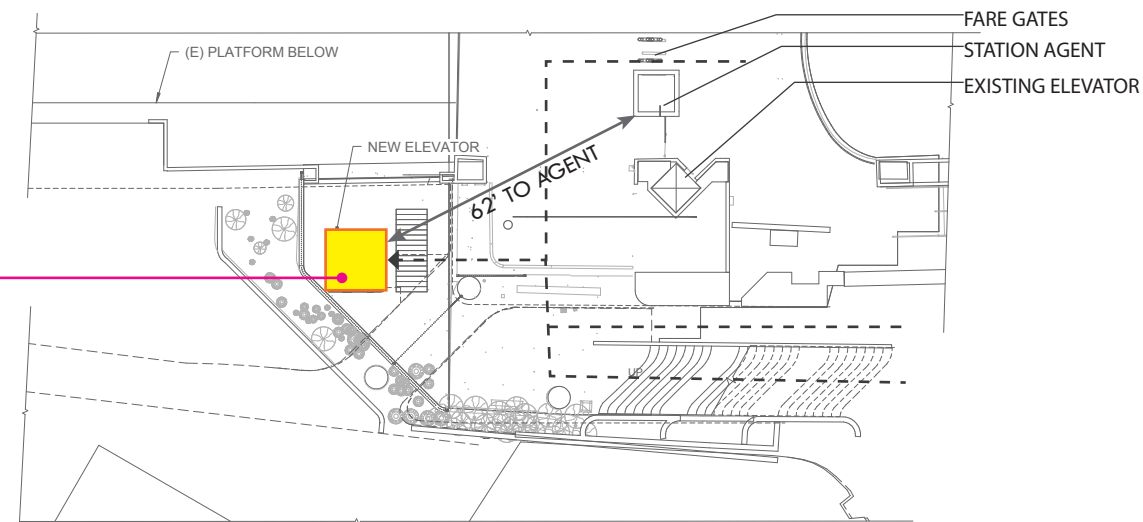
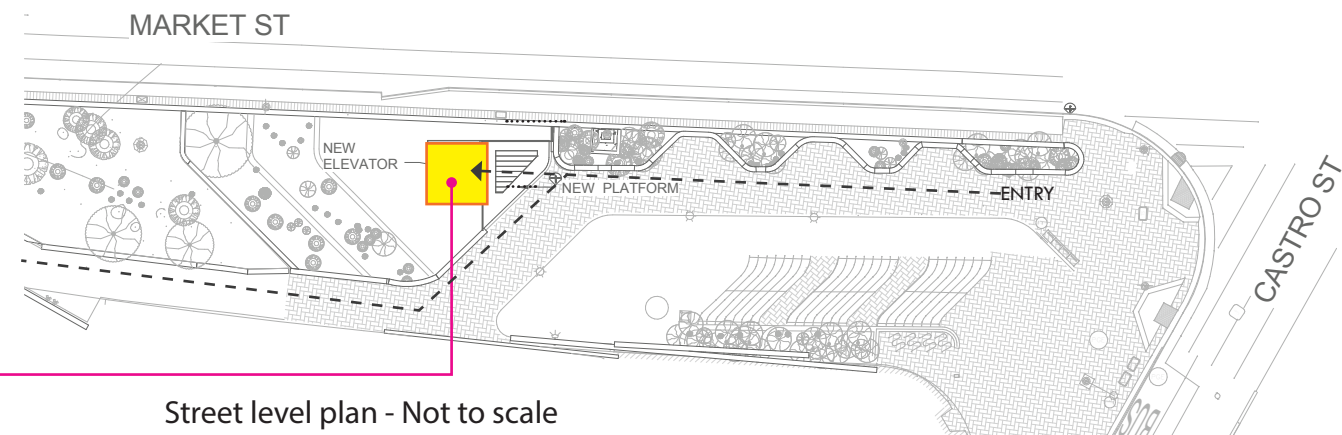
STREET LEVEL



CONCOURSE LEVEL

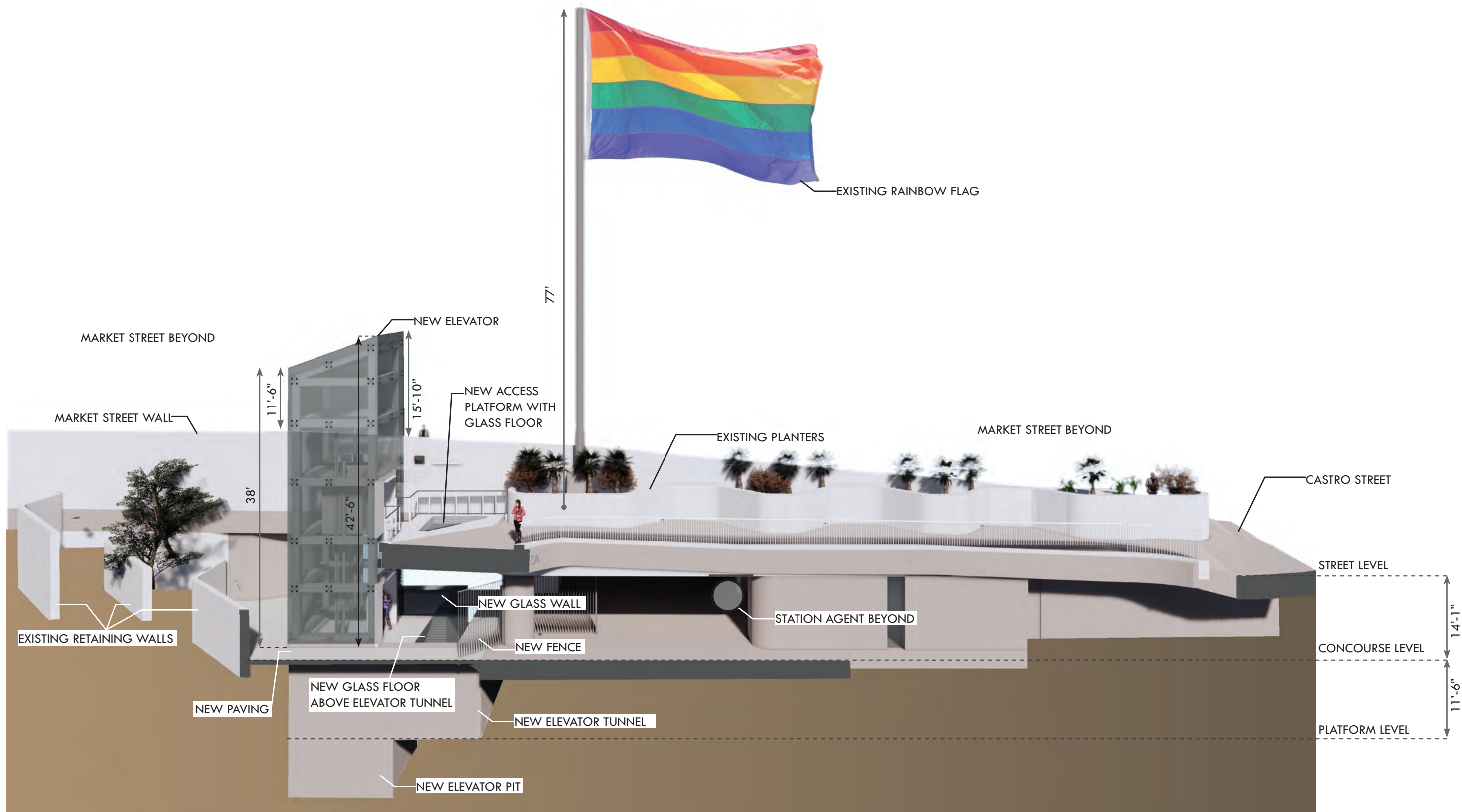


PLATFORM LEVEL



TRAINS

ELEVATOR | LONGITUDINAL SECTION



STRUCTURAL GLASS POINT SUPPORT SYSTEM

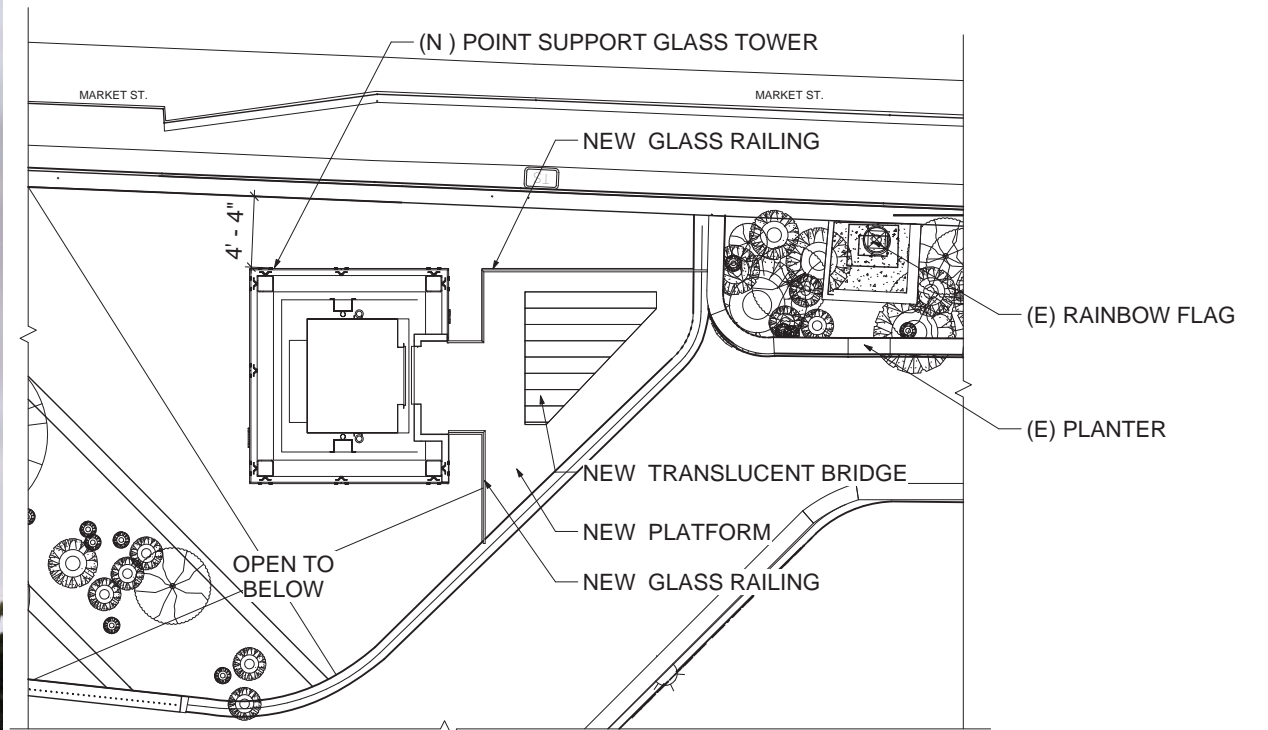


STOREFRONT SYSTEM



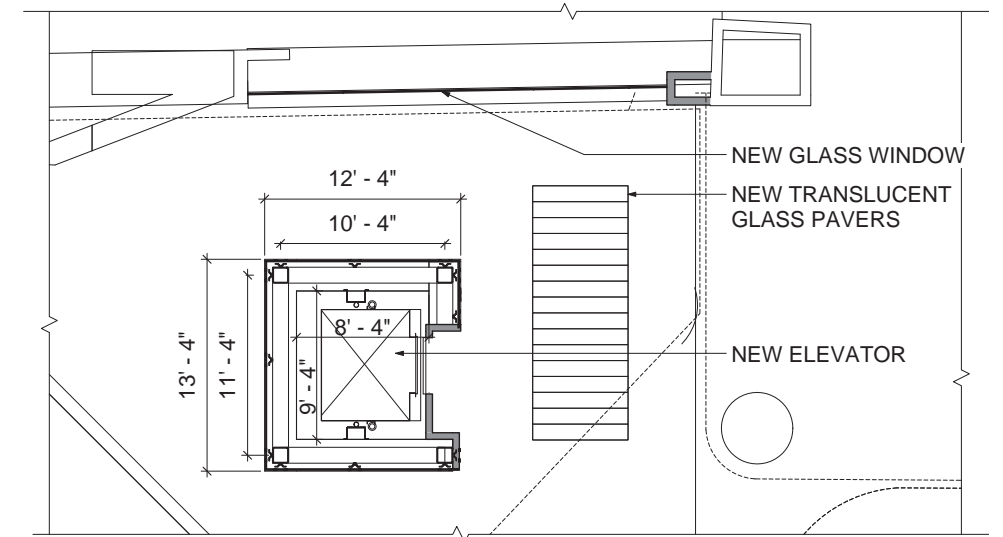
CURTAIN WALL SYSTEM





Street level plan - Not to scale





Mezzanine/Concourse level plan - Not to scale

