

# SAN FRANCISCO RECREATION & PARK DEPARTMENT

## ALAMO SQUARE - STAND ALONE RESTROOMS - CDR PHASE II





**SITE LOCATION**



**DESIGN CONCEPT:**

THE GOAL OF THE PROJECT IS TO CREATE A "SCULPTURAL" LIKE STRUCTURE WITH THE USE OF SIMPLE FORM GEOMETRY (ARCHIMEDEAN SPIRAL) THAT ARTICULATES THE MODERN PLAYGROUND DESIGN, BUT THAT ALSO INTEGRATES THE HISTORICAL CONTEXT OF THE PARK WITH THE USE OF SUBTLE TEXTURES AND INTEGRAL COLOR.

**SCOPE:**

THE SAN FRANCISCO REC & PARK DEPARTMENT IS PROPOSING THE CONSTRUCTION OF A STAND ALONE RESTROOM STRUCTURE ADJACENT TO THE CHILDREN'S PLAY AREA IN THE ALAMO SQUARE PARK.

**BUILDING INFORMATION:**

**LOCATION:** ALAMO SQUARE PARK, HAYES STREET AT STEINER STREET  
**SQUARE FOOTAGE:** 190.70 SF  
**BUILDING TYPE:** CAST IN PLACE CONCRETE







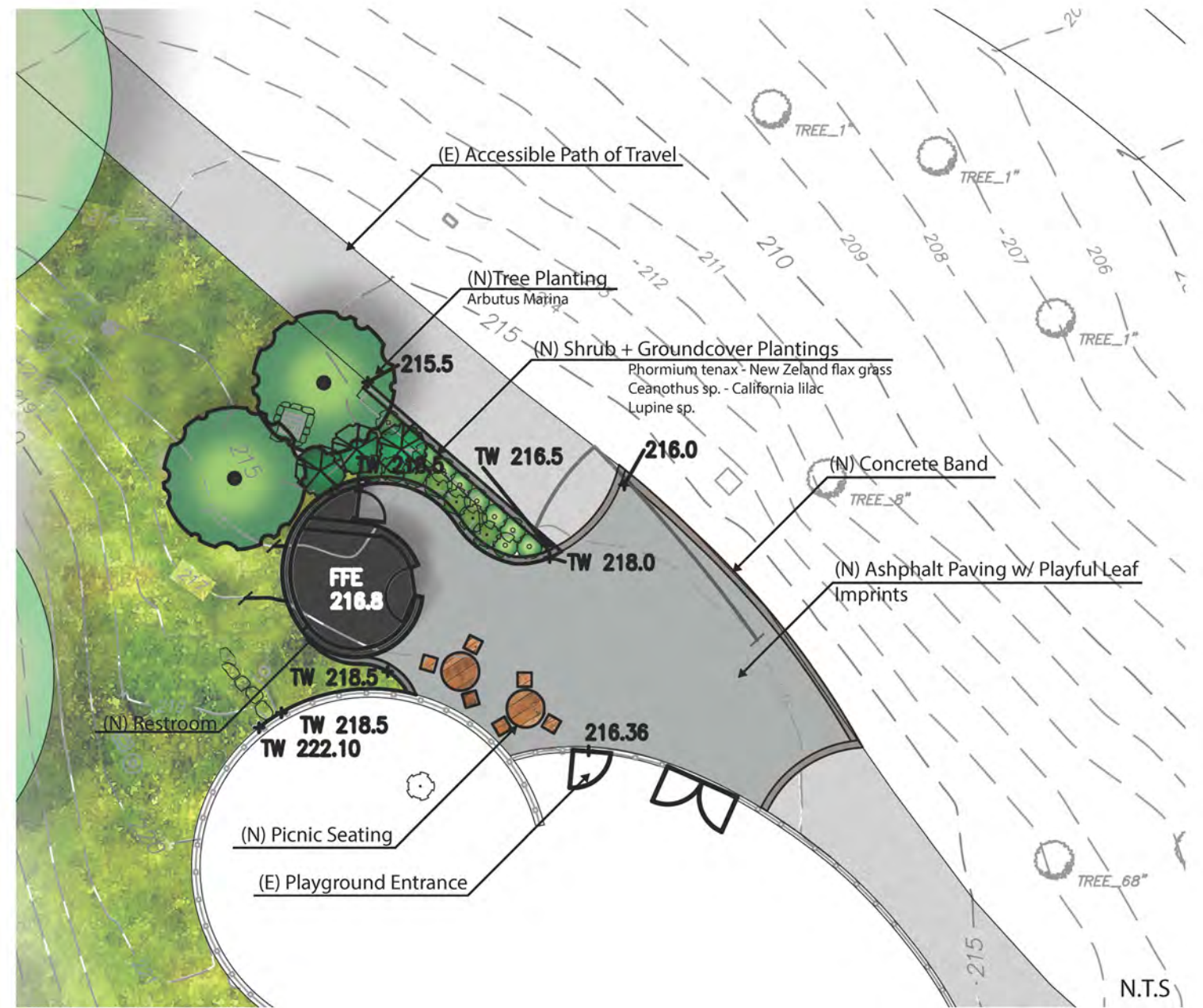












Arbutus Marina

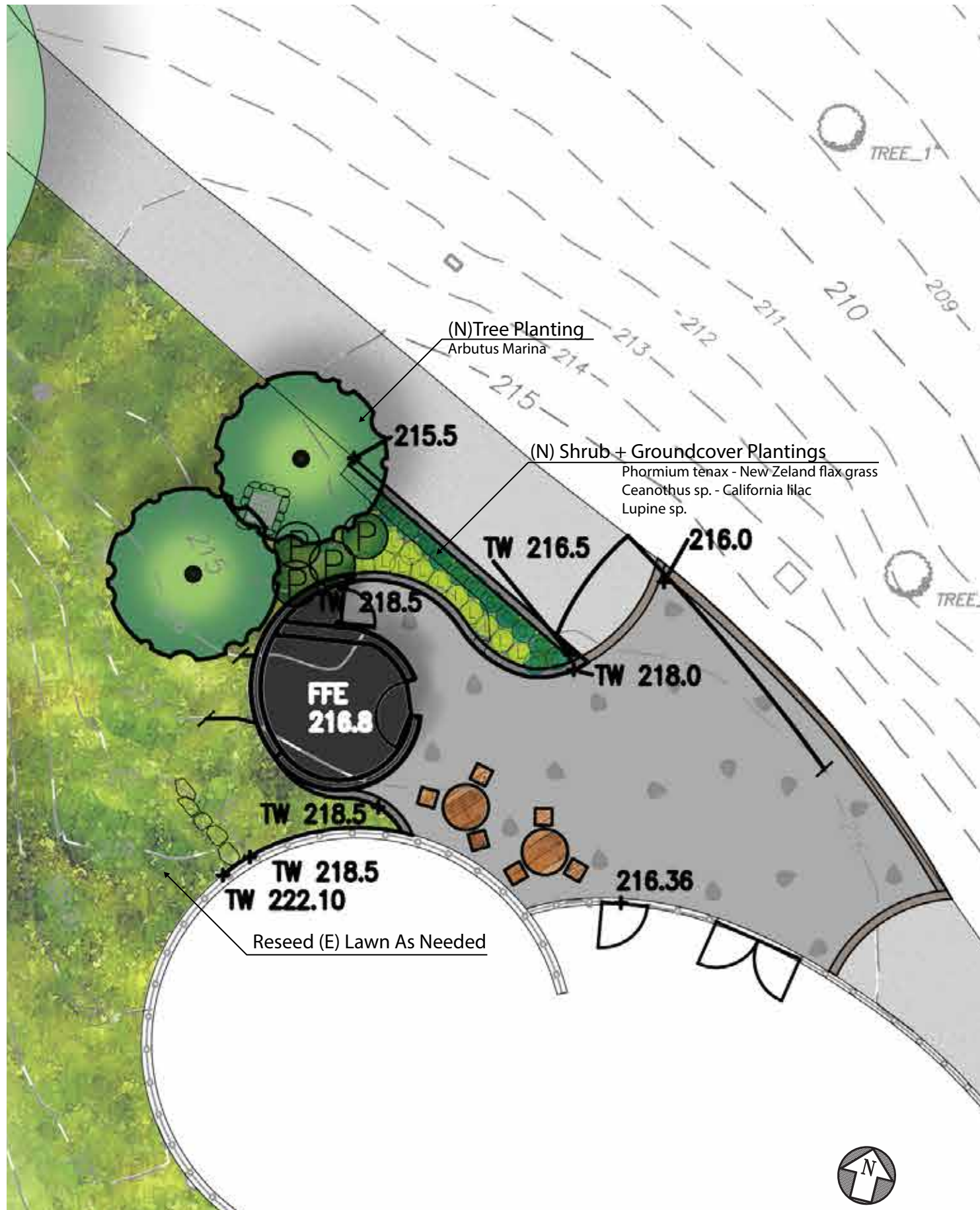


Ceanothus Sp.



Lupine Sp.





Arbutus marina - Strawberry Tree



Ceanothus sp. - California Wild Lilac

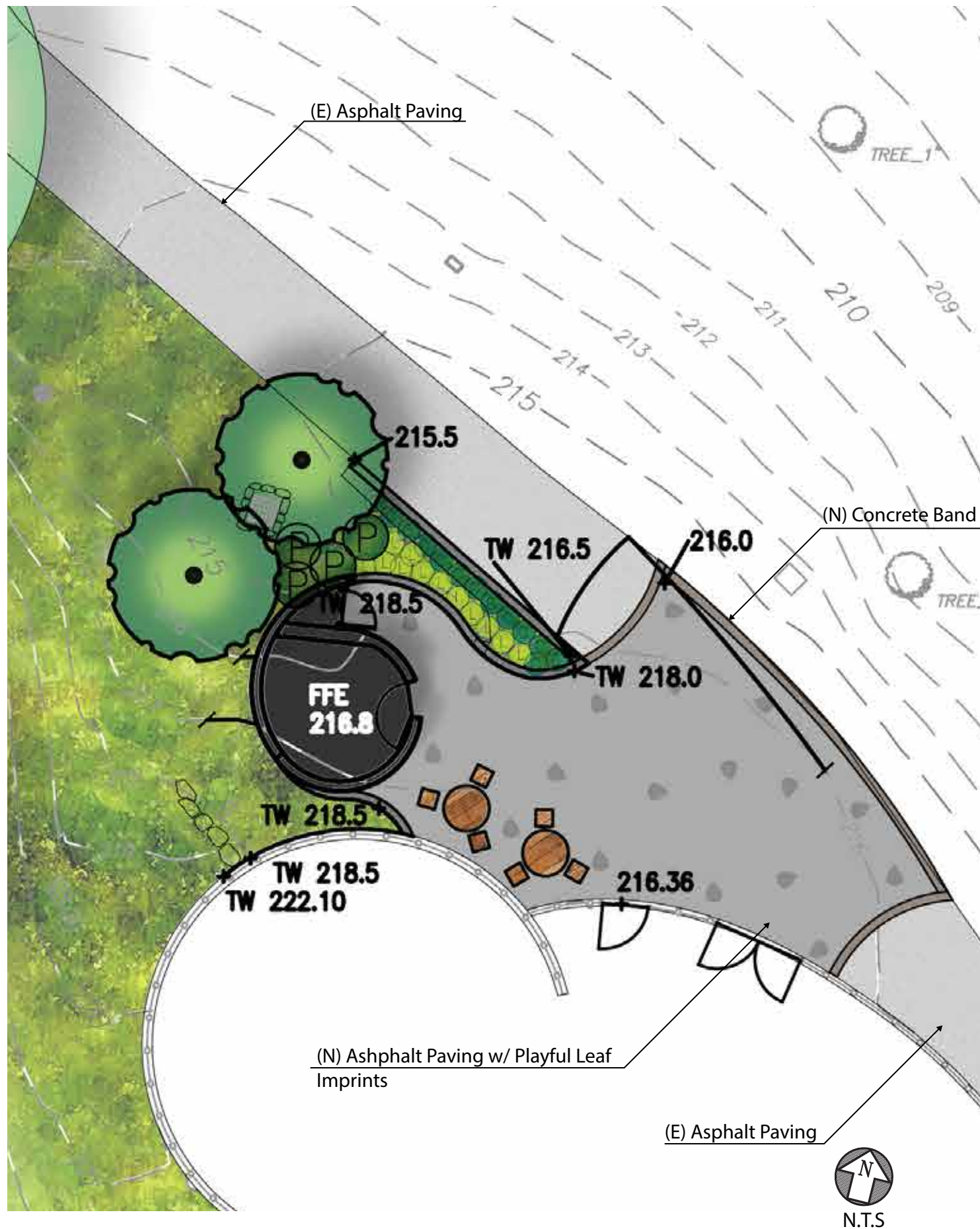


Lupinus sp. - Lupine



Phormium sp. - Rainbow Phormium



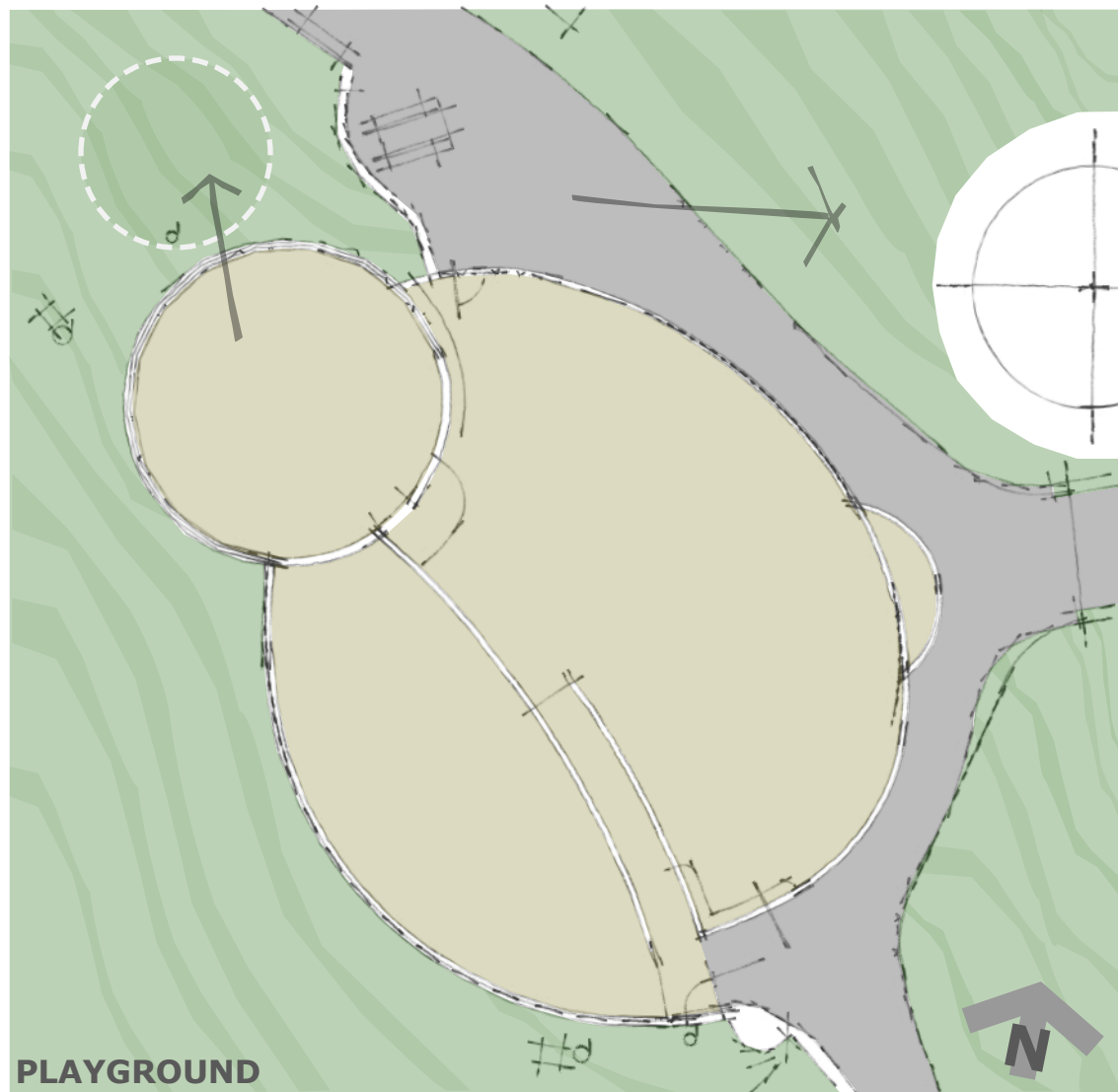


Leaf Imprint in Paving (I)

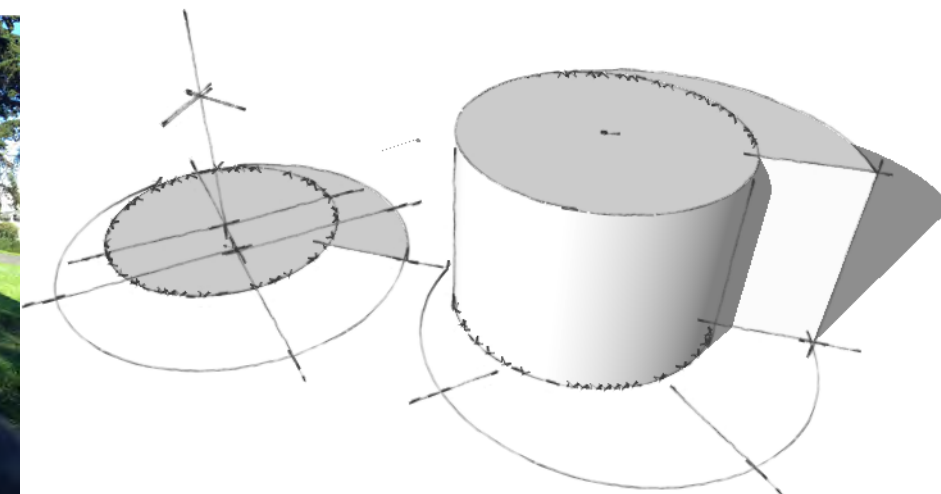
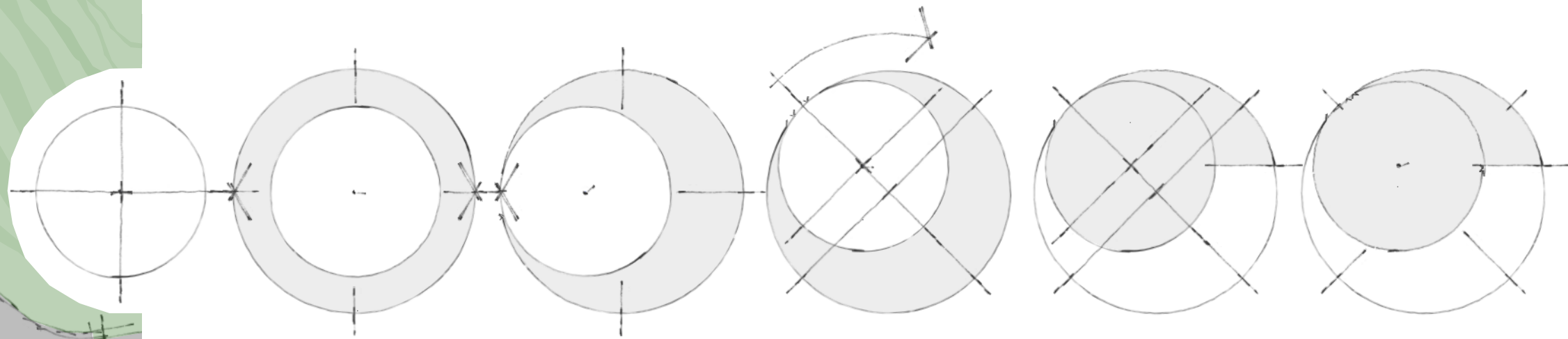


Leaf Imprint in Paving (II)





PLAYGROUND



PLAYGROUND - AERIAL VIEW

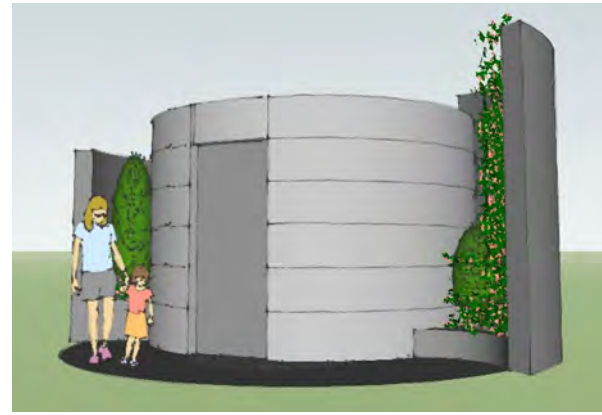
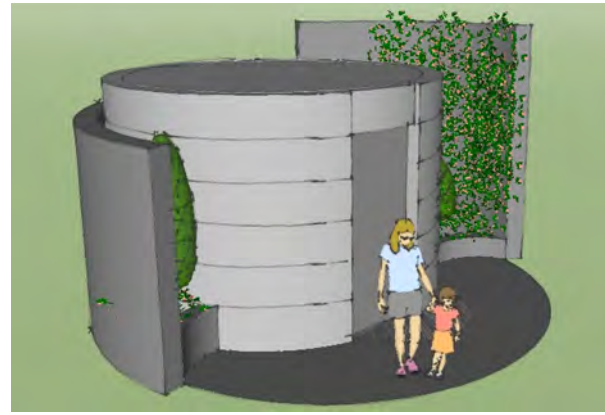
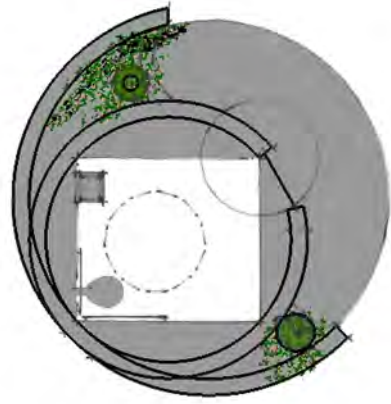
**DESIGN CONCEPT:**

THE GOAL OF THE PROJECT IS TO CREATE A "SCULPTURAL" LIKE STRUCTURE WITH THE USE OF SIMPLE FORM GEOMETRY (ARCHIMEDEAN SPIRAL) THAT ARTICULATES THE MODERN PLAYGROUND DESIGN, BUT THAT ALSO INTEGRATES THE HISTORICAL CONTEXT OF THE PARK WITH THE USE OF SUBTLE TEXTURES AND INTEGRAL COLOR.

**DESIGN CONSIDERATIONS:**

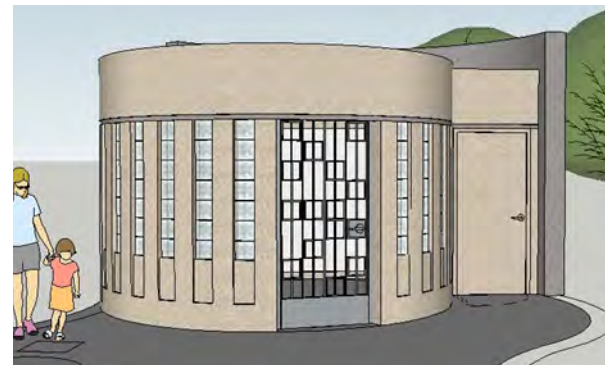
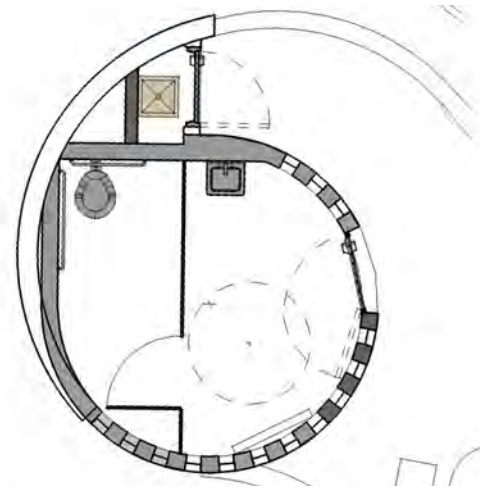
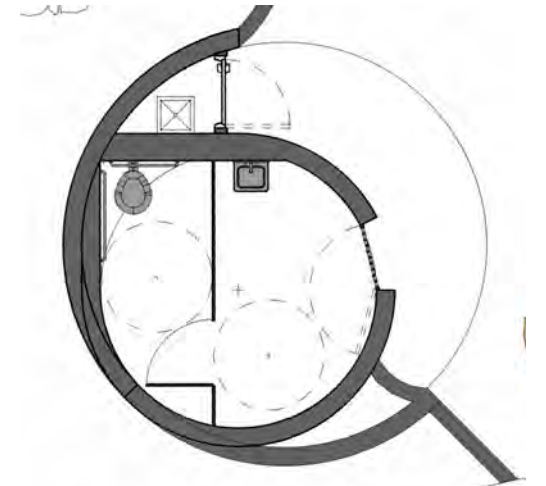
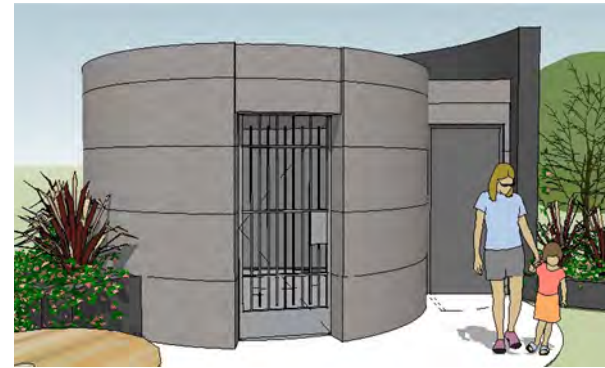
- CONNECTION/ INTEGRATION WITH THE EXISTING PLAY STRUCTURE (MODERN FEATURE OF THE PARK) WITH THE ARTICULATION OF GEOMETRY AND MATERIALS.
- THE CONCEPT OF "MODERN VERNACULAR" IS APPROPRIATE BECAUSE DOES NOT PRODUCE THE IMPRESSION OF "FALSE HISTORICISM".
- SCALE AND PROPORTION COMPATIBLE WITH SURROUNDING LANDSCAPE AND PLAYGROUND STRUCTURE.
- CONNECTION BETWEEN THE BUILDING AND THE LANDSCAPE (HISTORIC FEATURE OF THE PARK) SHOULD ALSO BE CONSIDERED BY MINIMIZING CHANGES IN THE PARK'S EXISTING TOPOGRAPHY.
- BLEND THE JANITOR'S ROOM DOOR INTO THE FAÇADE.





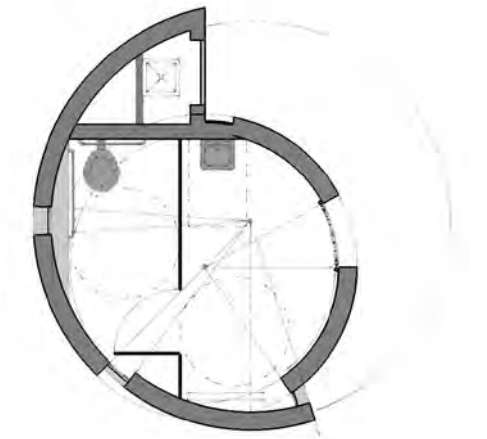
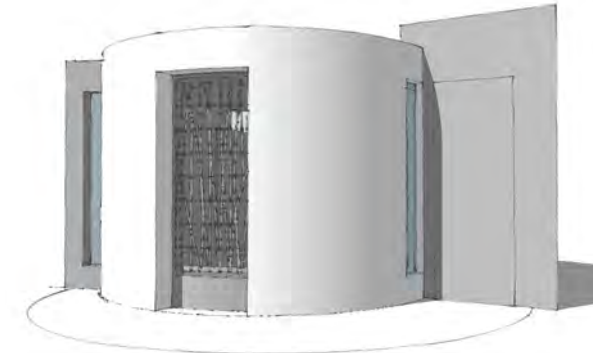
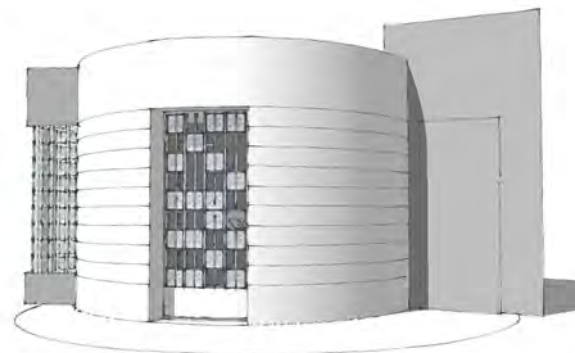
DESIGN PROGRESSION - 7 12 2013

DESIGN PROGRESSION - 9 3 2013

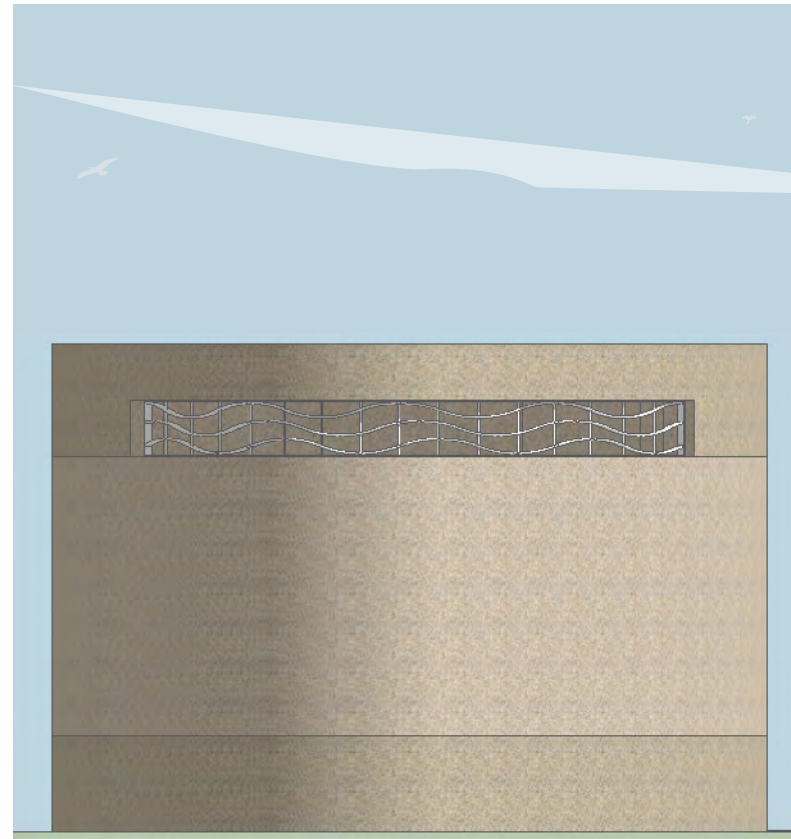
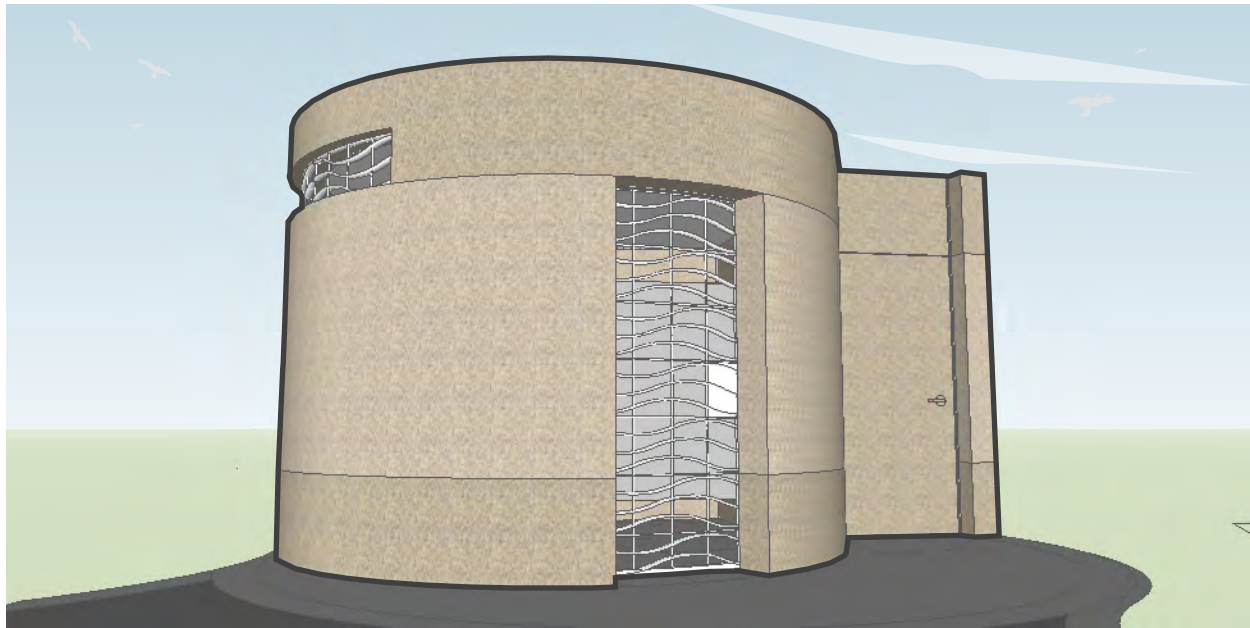


DESIGN PROGRESSION - 9 12 2013

DESIGN PROGRESSION - SEPTEMBER 9 23 2013



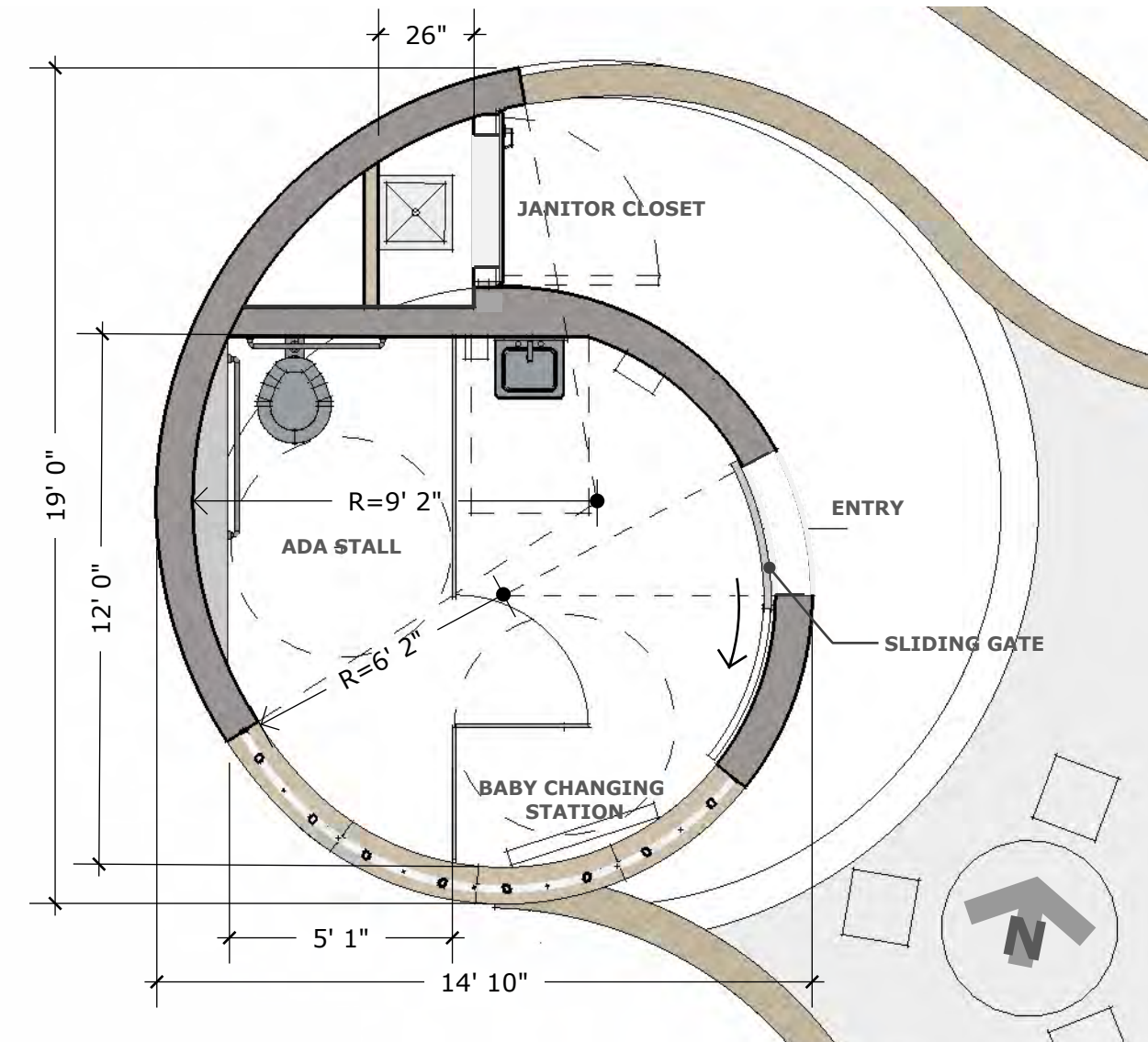




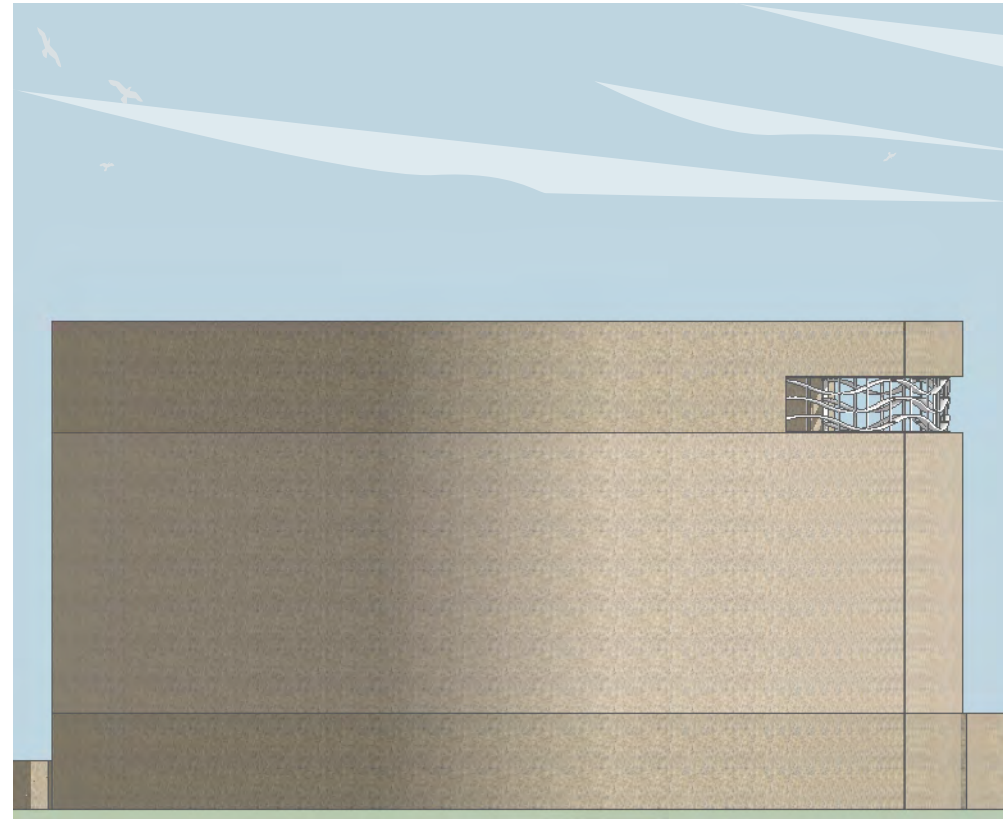
**SOUTH ELEVATION** ESC: 1/4



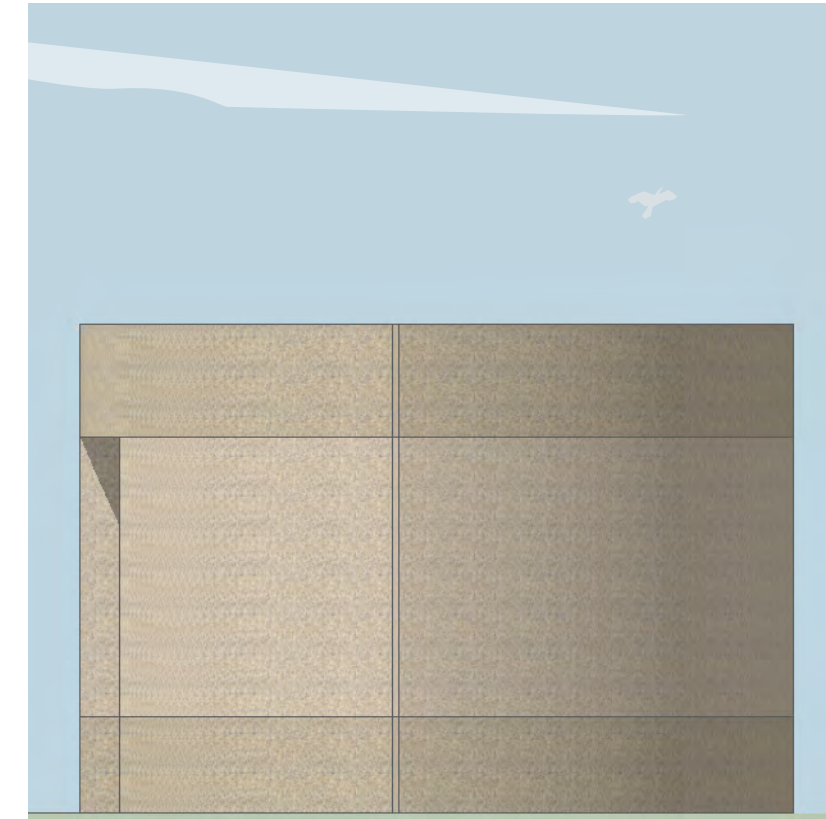
**EAST ELEVATION** ESC: 1/4



**FLOOR PLAN** ESC: 1/4

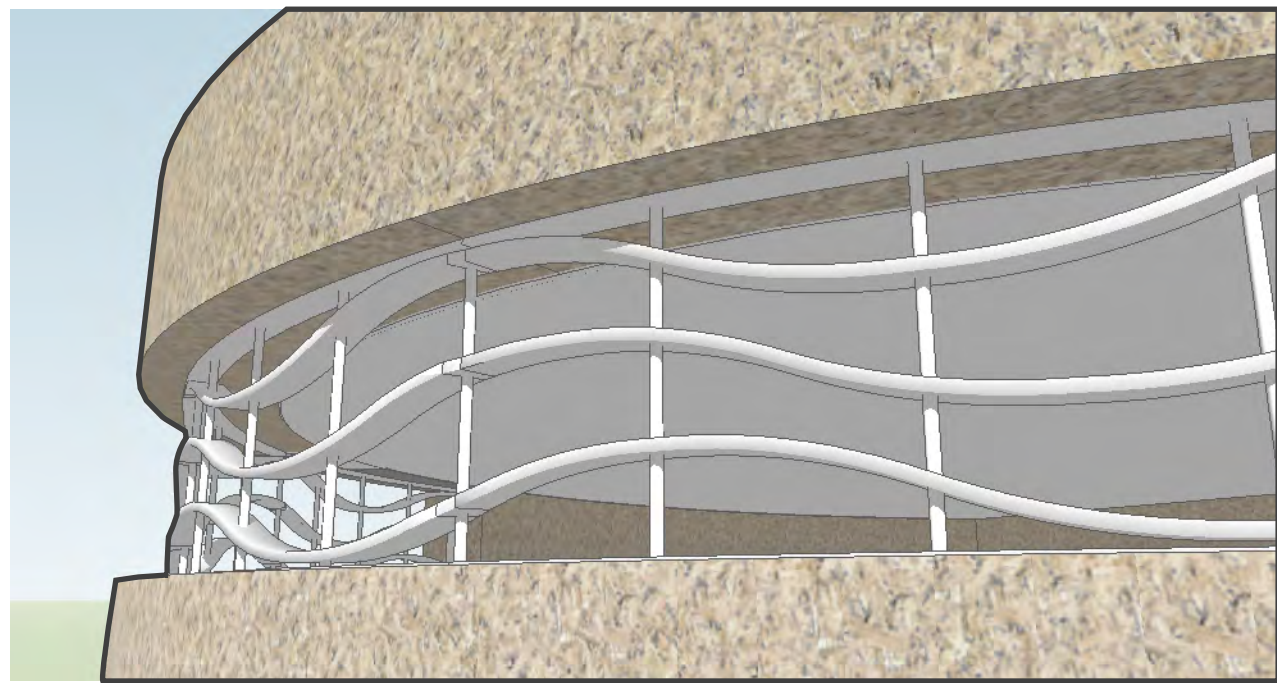


**WEST ELEVATION** ESC: 1/4

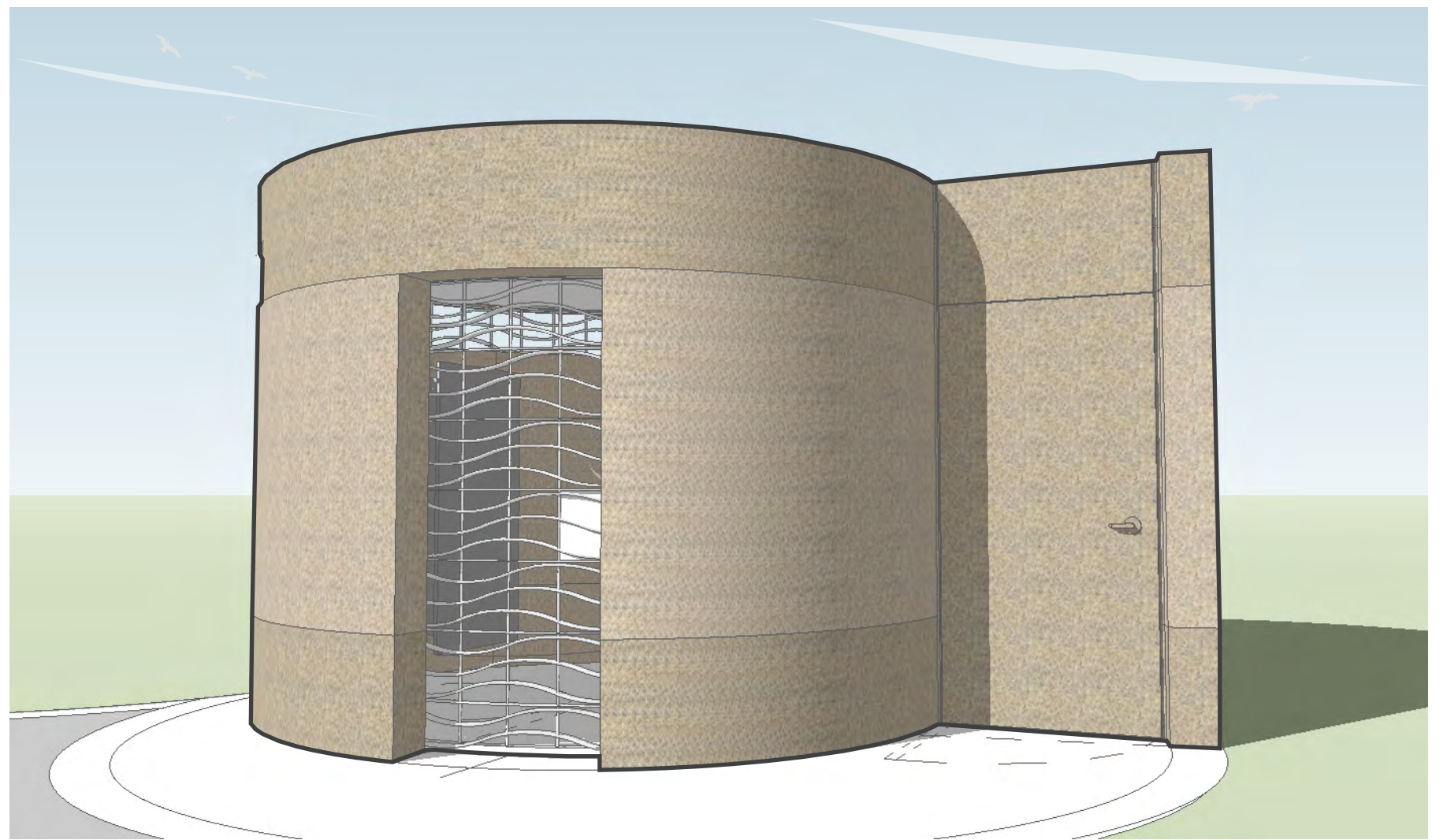
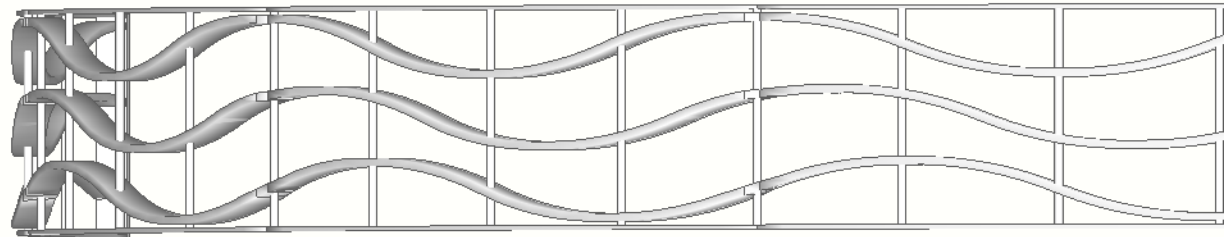


**NORTH ELEVATION** ESC: 1/4





**METAL GRILL DETAIL**

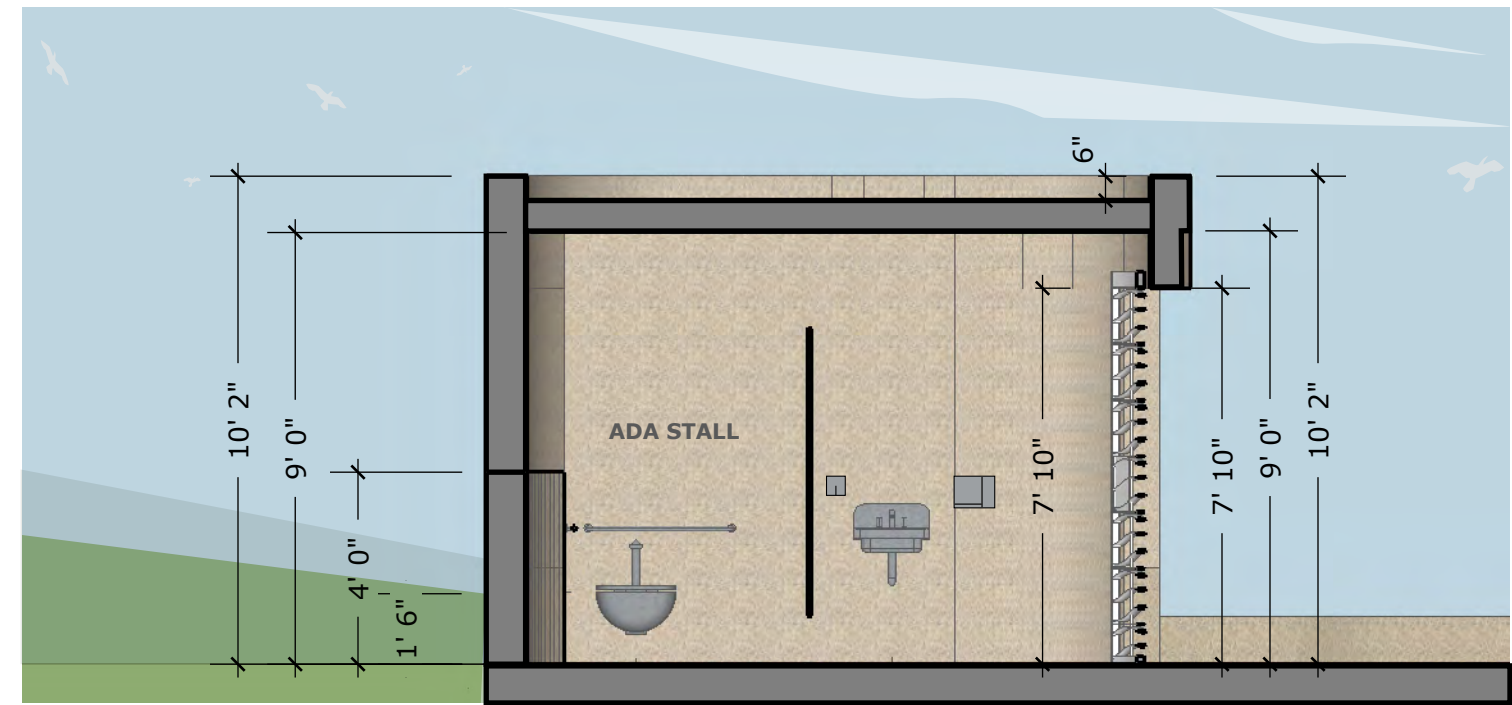


**PERSPECTIVE**



**LONGITUDINAL SECTION**

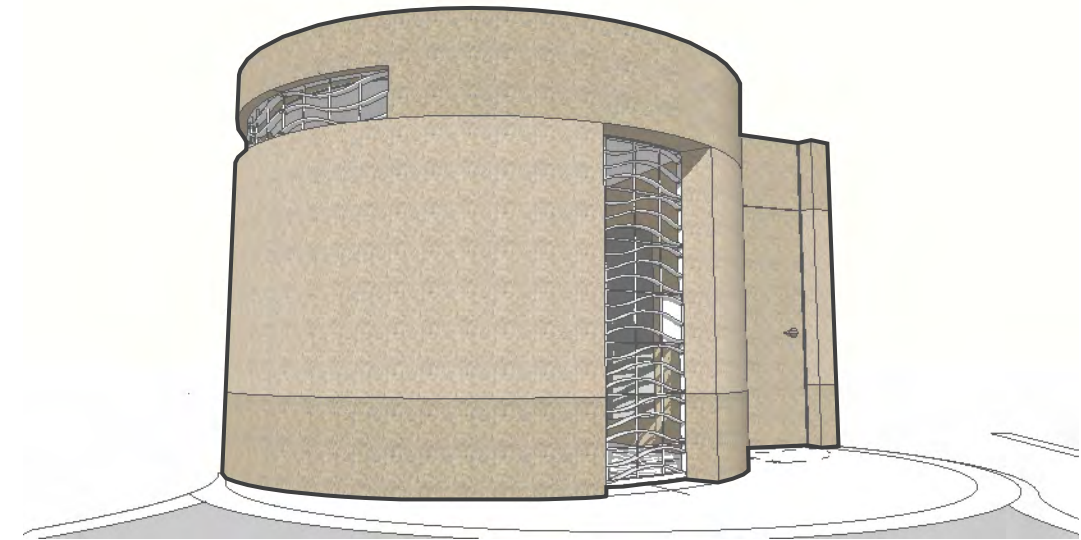
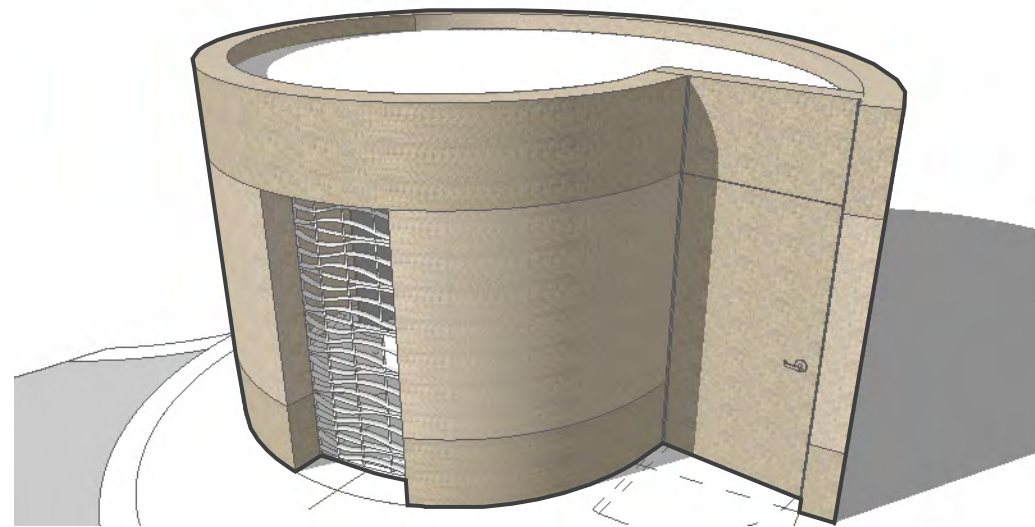
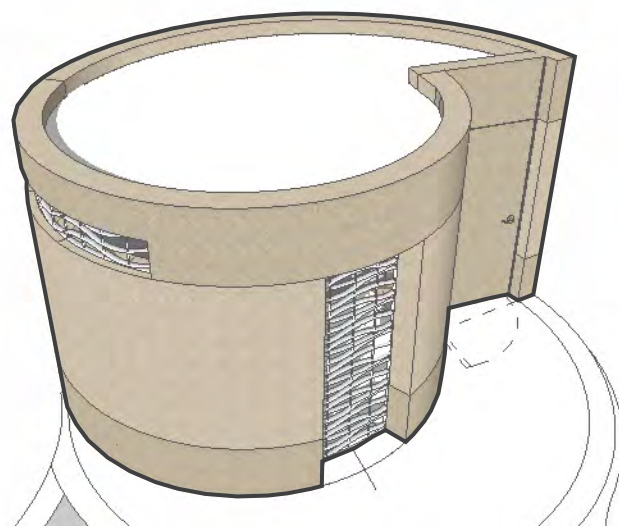
ESC: 1/4



**TRANSVERSE SECTION**

ESC: 1/4





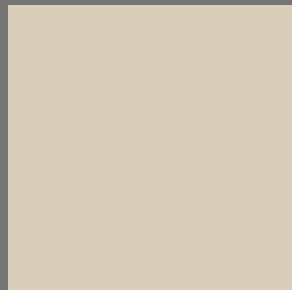


# MATERIALS

## COLOR SCHEME



SUMMER BEIGE  
(INTEGRAL COLOR  
CAST IN PLACE  
CONCRETE)

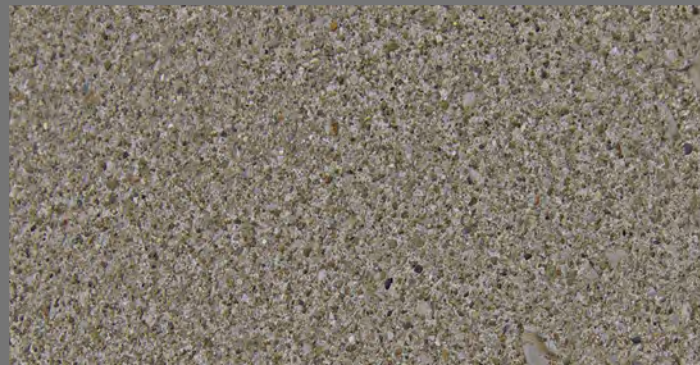


SUMMER BEIGE  
(METAL PANEL  
DOOR)



WHITE - WHISFUL  
WHITE  
(GATE & WINDOW  
GRILL)

## TEXTURES



WALLS:  
CAST IN PLACE CONCRETE -  
& INTEGRAL COLOR

BASE FINISH - SMOOTH  
FINISH TEXTURE - FORM  
WORK

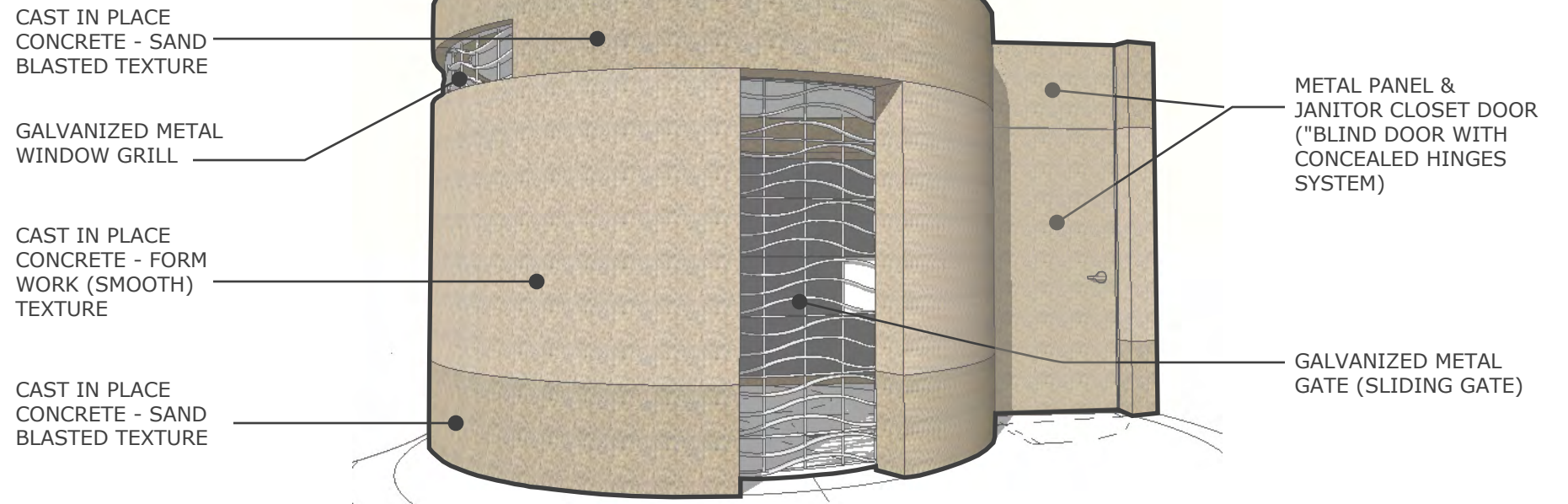
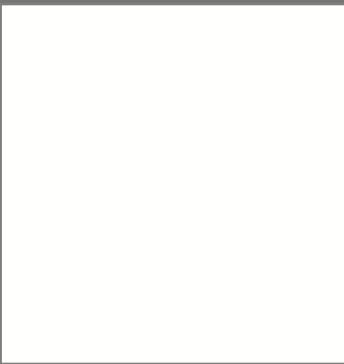
ACCENT FINISH  
SAND BLASTED FINISH  
TEXTURE

WINDOW GRILL & GATE

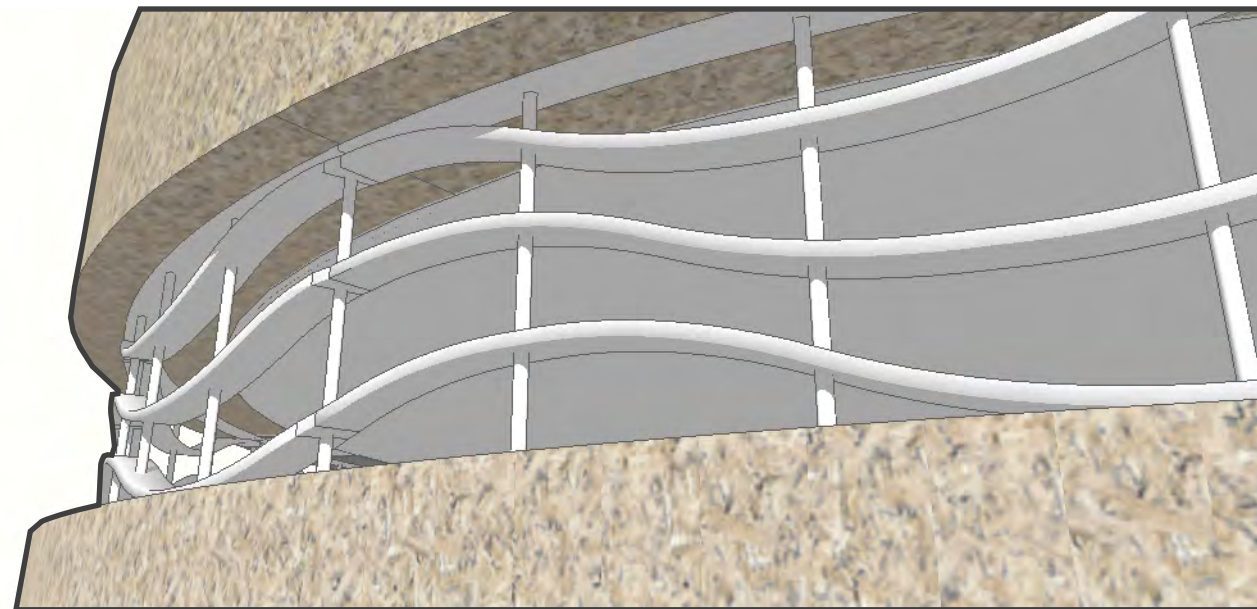
GALVANIZED METAL + PAINT  
FINISH

JANITOR'S CLOSET DOOR  
AND PANEL

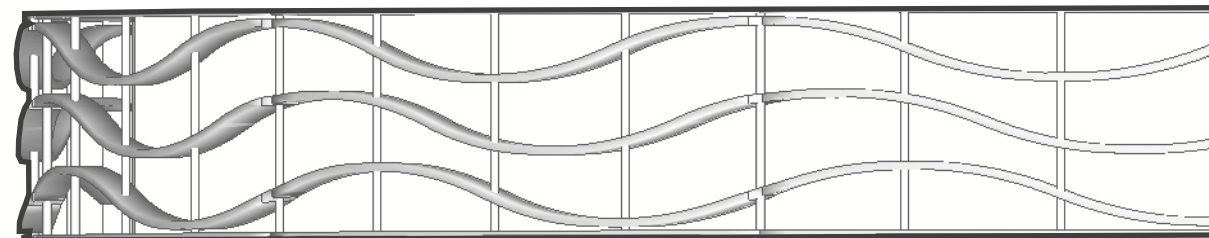
METAL PANEL



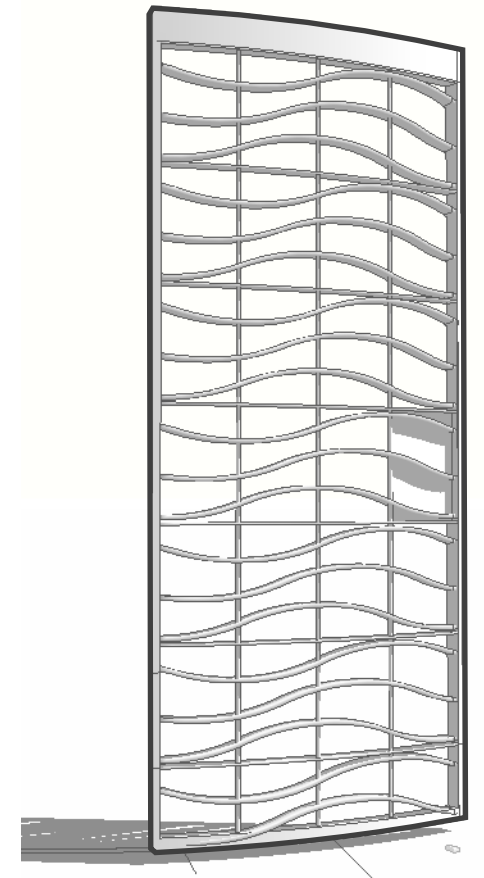
## METAL WORK DETAILS



METAL WINDOW GRILL DETAIL



METAL WINDOW GRILL DETAIL ELEVATION



METAL GATE DETAIL



