



**FIRE STATION #5  
PUBLIC ART SELECTION PANEL – MEETING 2**

**SUMMARY**

**MEETING DATE**

April 26, 2016

**VOTING SELECTION PANELISTS**

JD Beltran: Arts Commission President  
Frank Cercos: Client Agency Representative  
Melorra Green: Arts Professional  
Karyn Shore: Project Architect  
Mohammed Soriano Bilal: Community Representative  
Jenifer K. Wofford: Arts Professional

**PROCESS**

The following artists presented an overview of their practice and proposals for the Fire Station #5 Public Art Project:

Bernadette Jiyong Frank  
Ron Moultrie Saunders  
Amanda Weil

Presentations were followed by discussion and voting.

**VOTING CRITERIA**

The panelists were asked to rank each of the artists and artwork proposals 1-3 (1=highest rank) taking into consideration the following criteria:

- Aesthetic quality
- Appropriateness of the proposed artwork for the site and project goals

**RESULTS OF VOTING TALLY**

Bernadette Jiyong Frank	6
Ron Moultrie Saunders	15
Amanda Weil	15

The panel selected the first highest ranked artist and proposal to recommend to the Arts Commission.

**ARTS COMMISSION APPROVAL**

**Motion:** Motion to approve the selected artist Bernadette Jiyong Frank’s conceptual proposal for Fire Station #5, as recommended by the Fire Station #5 Selection Panel.

**Motion:** Motion to authorize the Director of Cultural Affairs to enter into contract with artist Bernadette Jiyong Frank for the design and implementation of an artwork in an amount not to exceed \$90,380 for Fire Station #5.

Fire Station #5 Public Art  
BERNADETTE JIYONG FRANK

---





**Studio** | Hunters Point Shipyard, San Francisco



間

[*ma*]

*n.*

negative space, gap, pause, or  
space between two structural parts







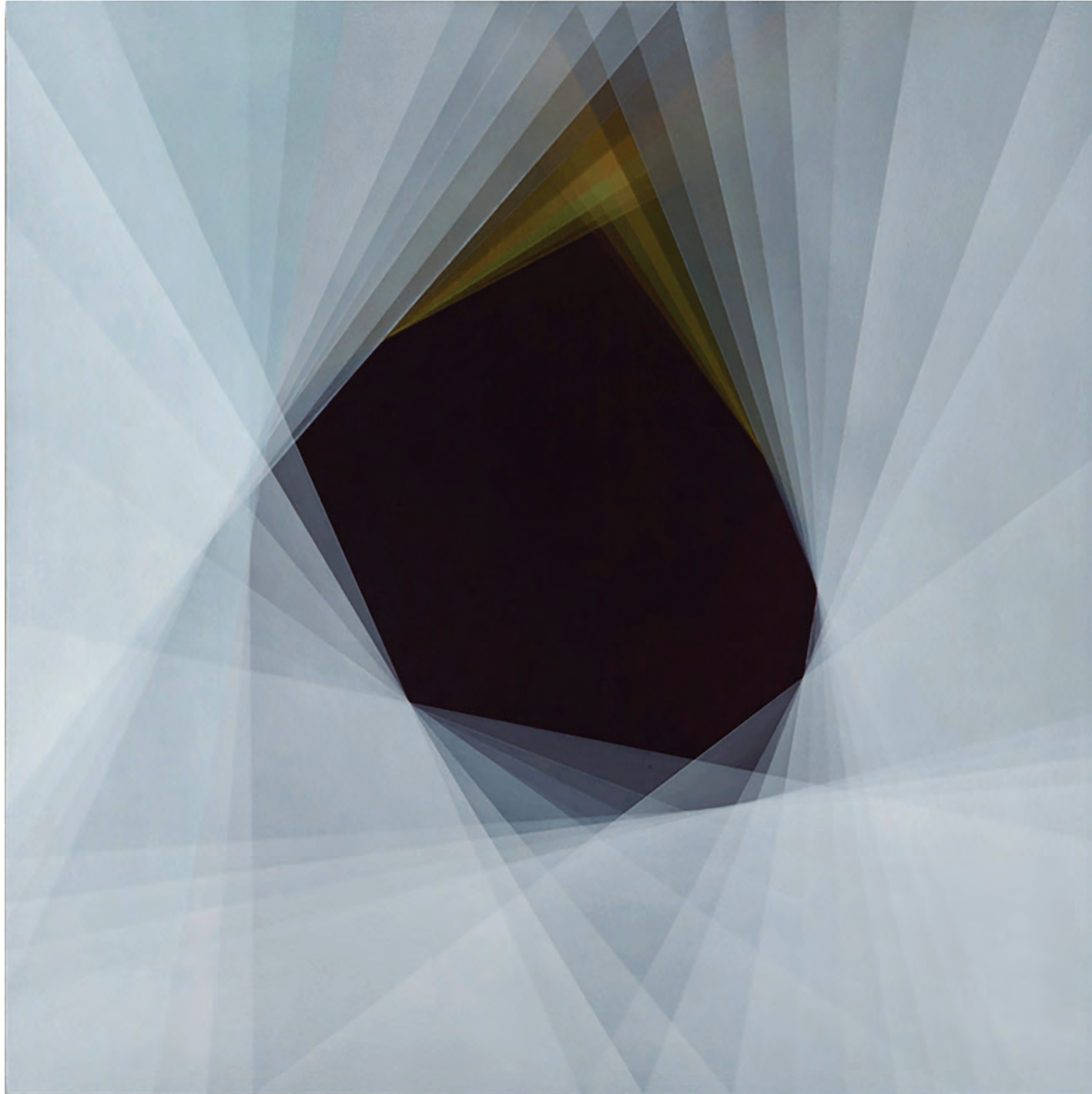




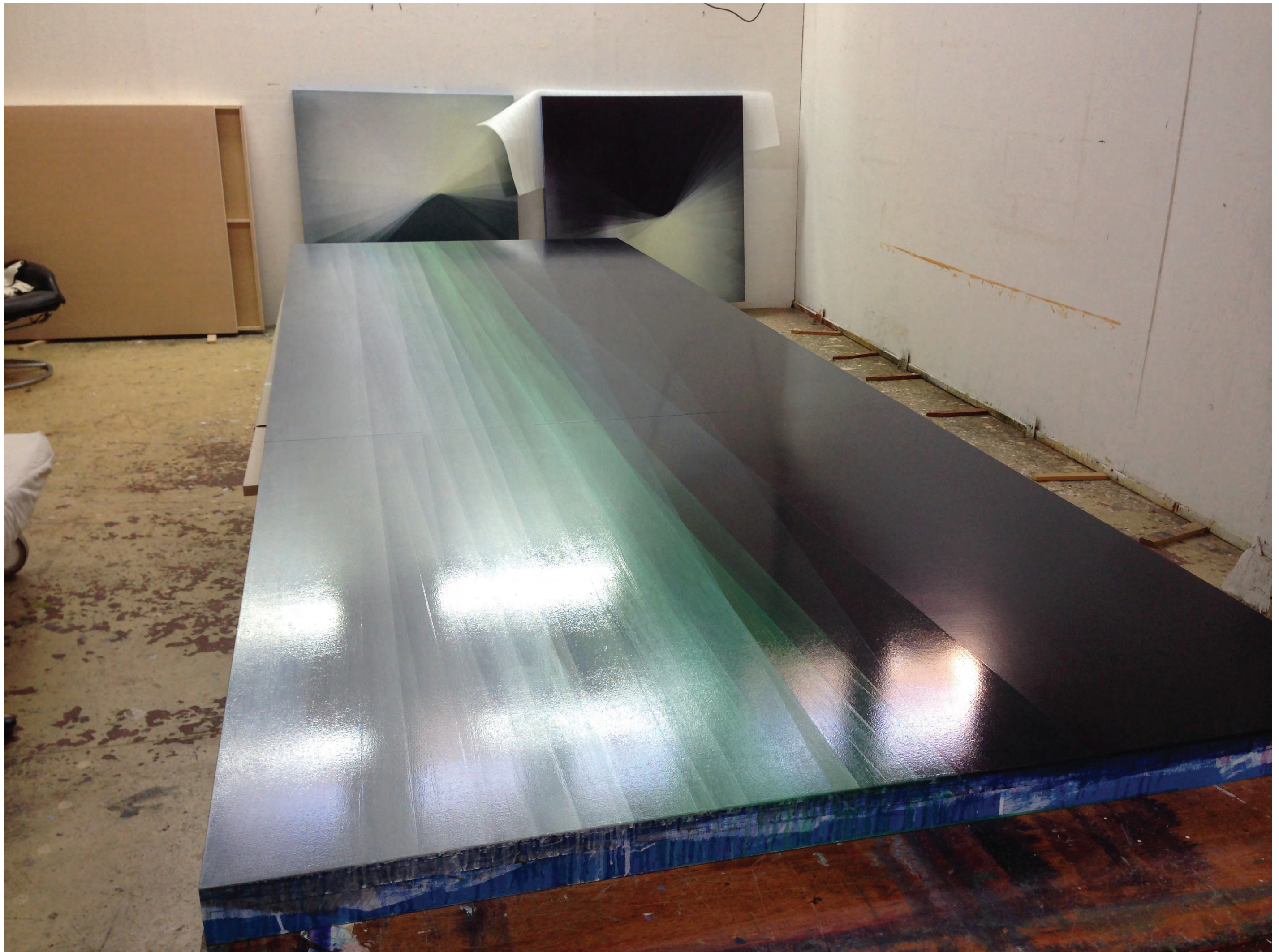




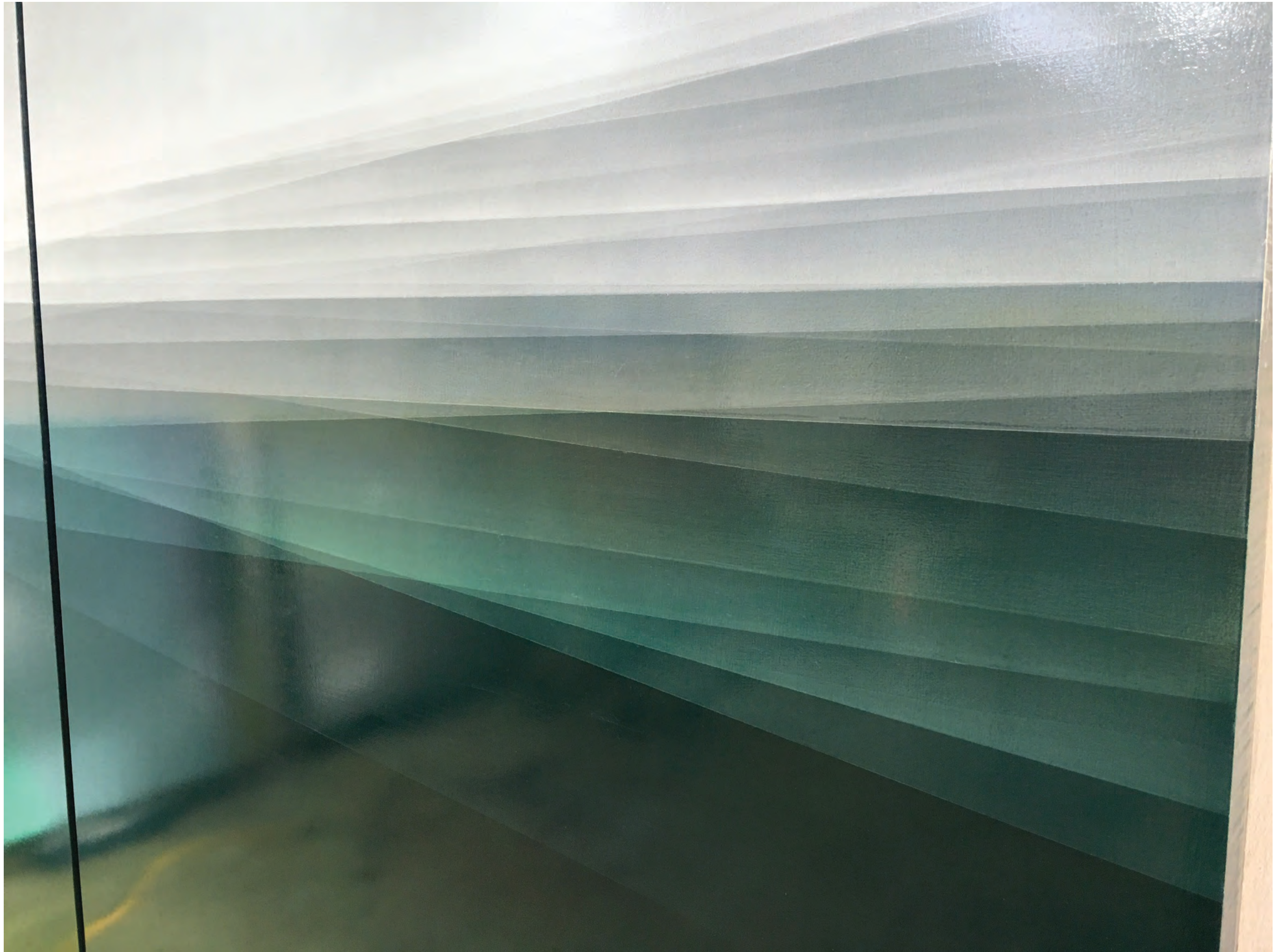
















Solo Exhibition 2015 | Galerie Beate Berndt, Augsburg, Germany





Solo Exhibition 2014 | Dolby Chadwick Gallery, San Francisco





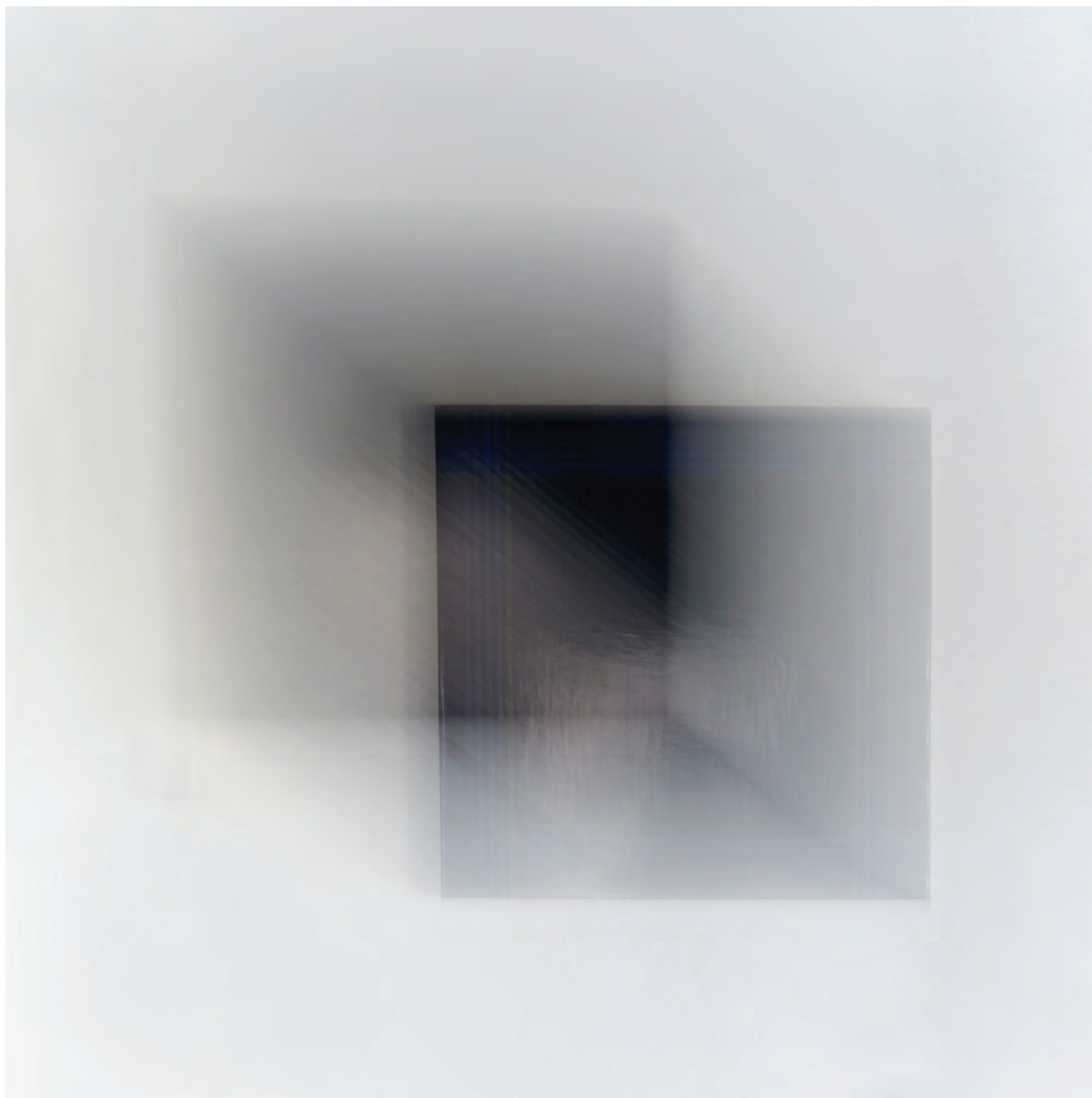














FLOW

Fire Station #5 Public Art Proposal



## 3 key considerations:

### Neighborhood

- First multicultural neighborhood in the city
- The historic Fillmore
- Tragic past: Japanese American internment & displacement of African American communities due to failed urban renewal efforts
- Recent efforts to bring back the Fillmore music scene has failed (Yoshi's, etc)

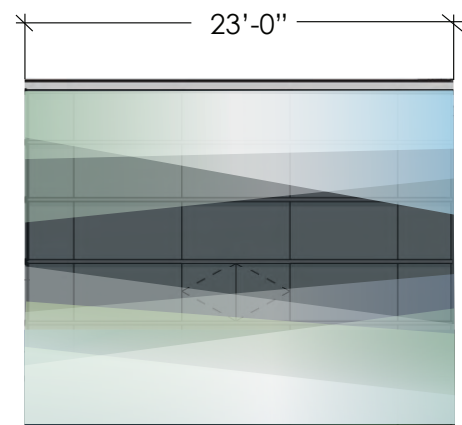
### Fire Station

- Protection
- Alertness 24/7
- Calmness
- Interior space for the inhabitants of the fire station

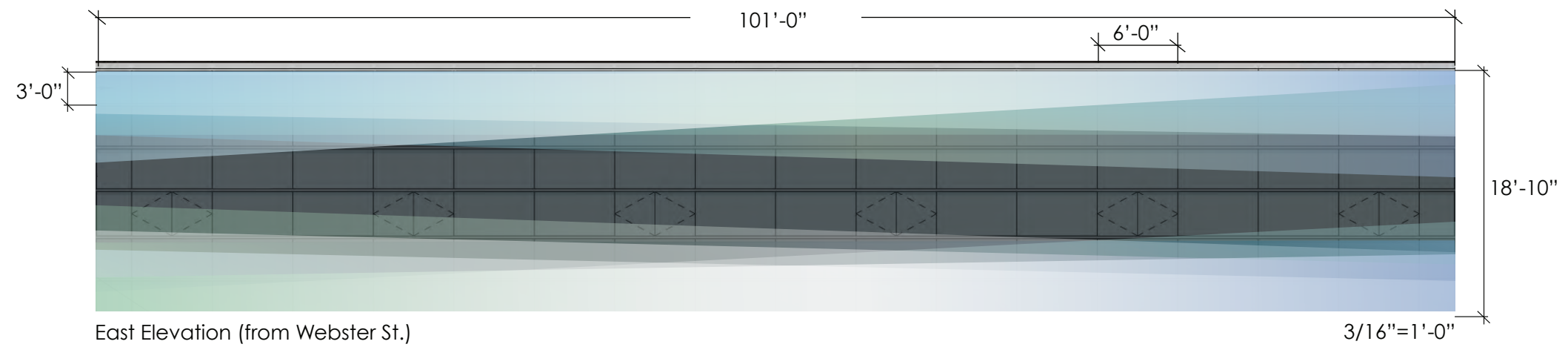
### Architecture

- Solid base of the building with light glass volume on top
- Upper and lower shadow box and the transparent middle section
- Reinforcing horizontality

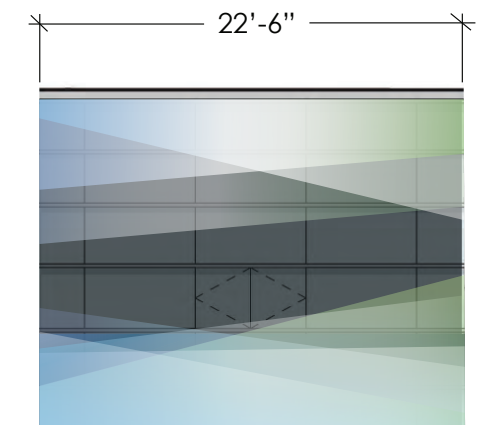




South Elevation

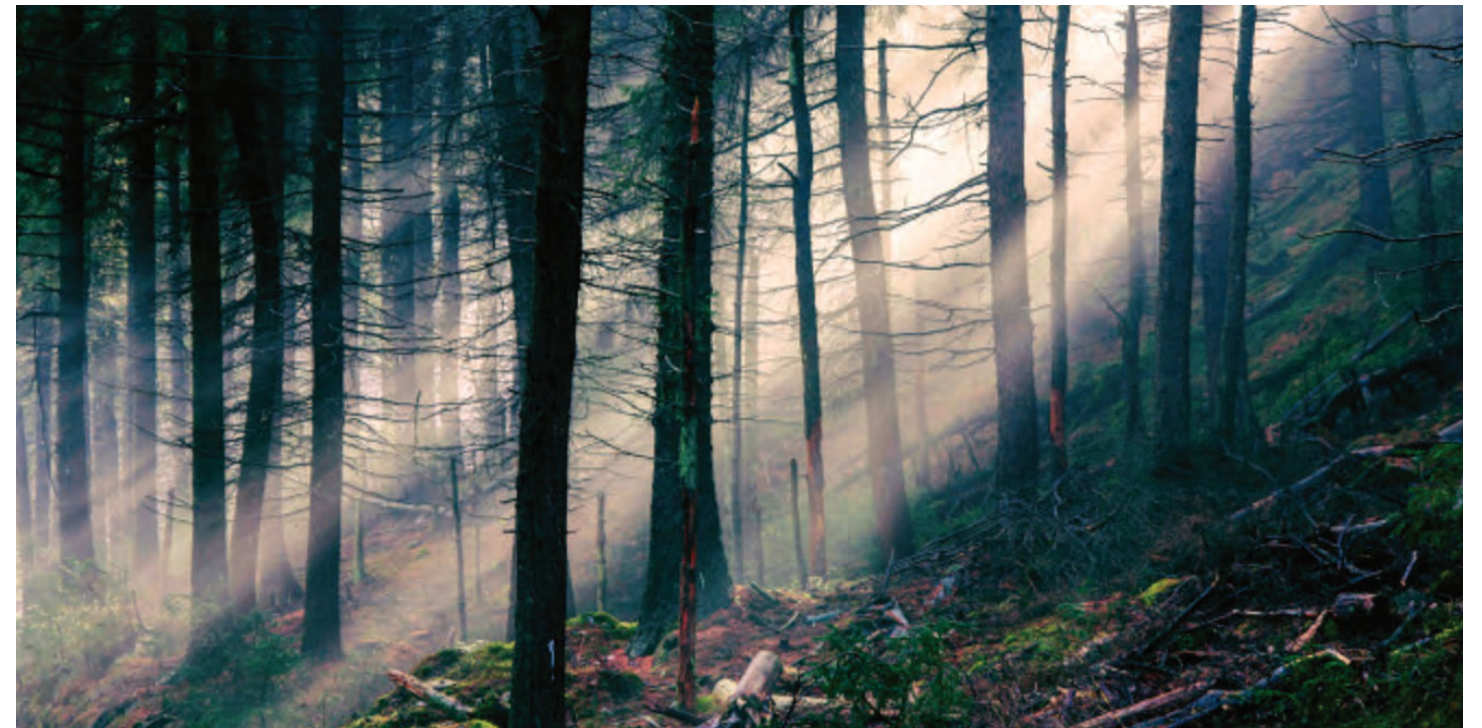


East Elevation (from Webster St.)



North Elevation (from Turk St.)

## Inspirations

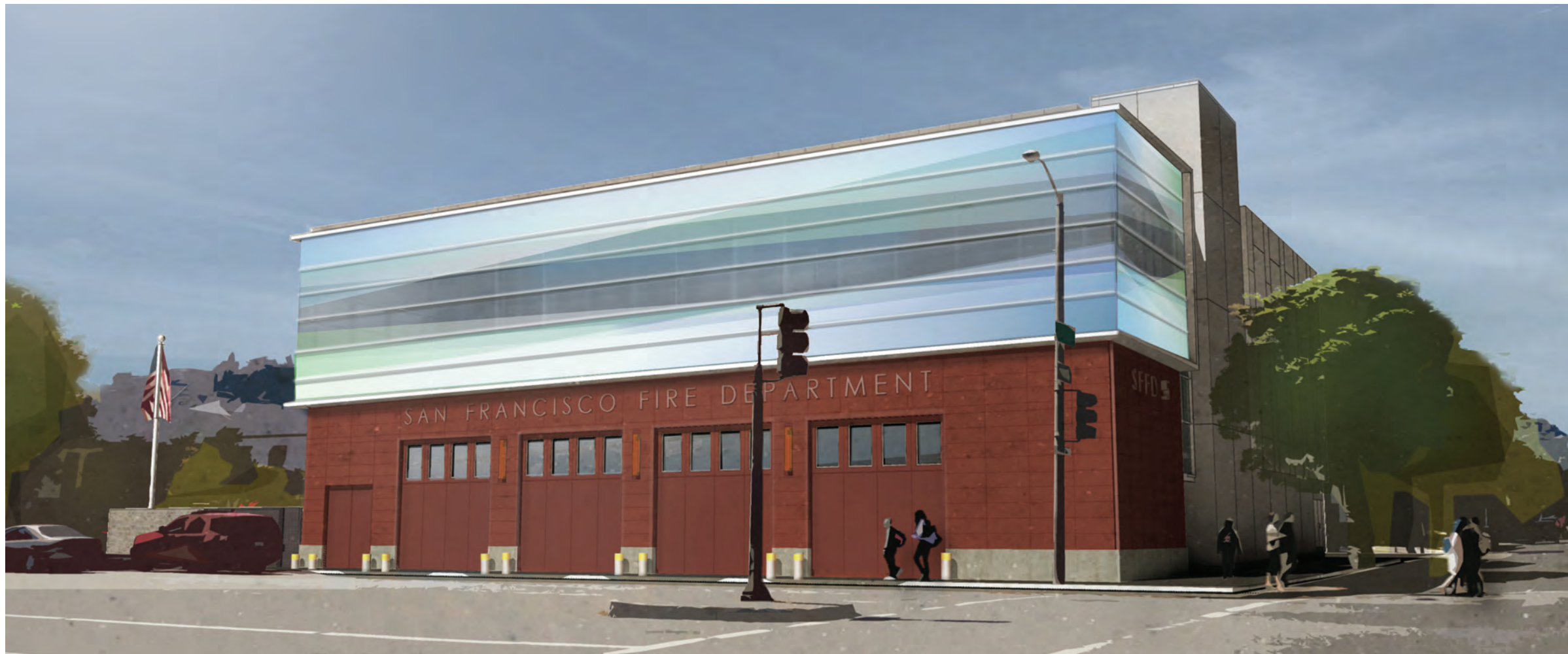




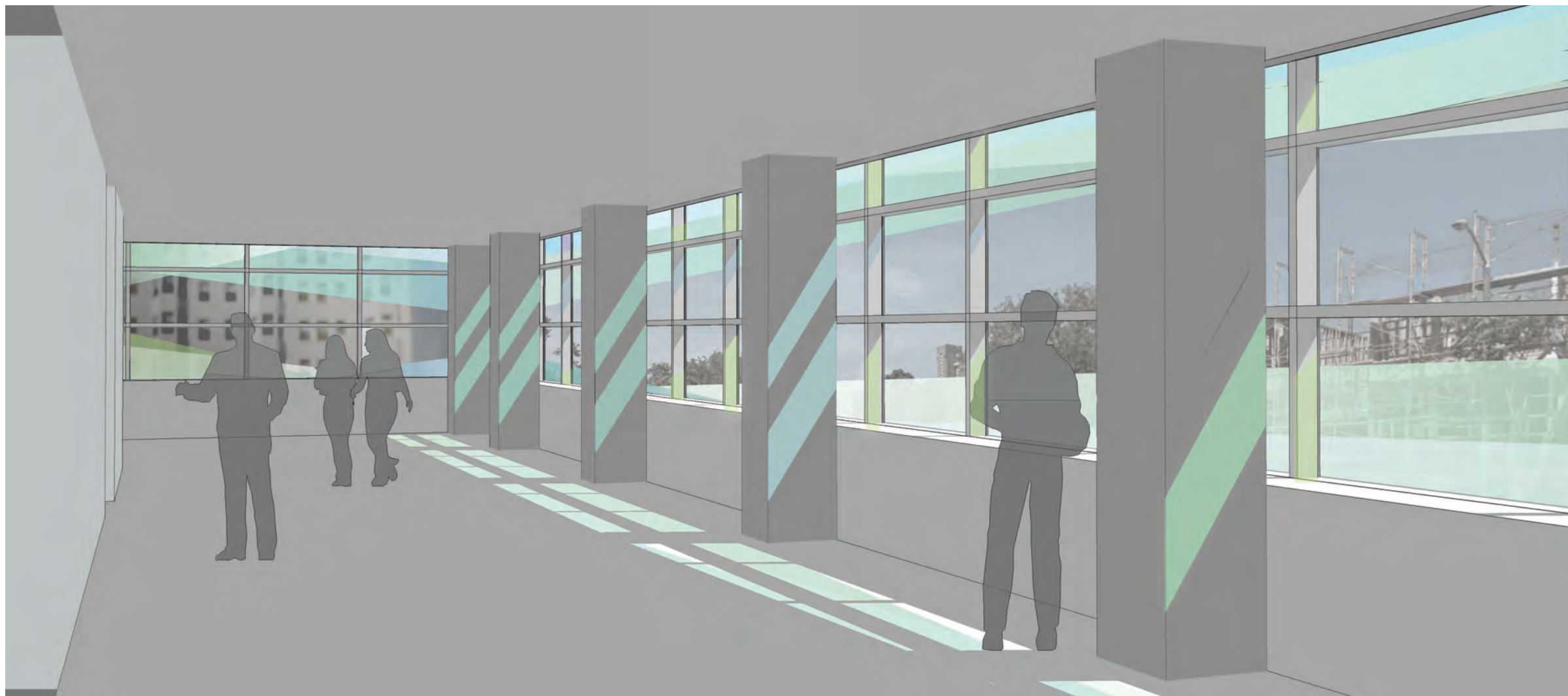


Southeast View (Webster St.)





Northeast View



Interior View



## Material and Technical Descriptions:

### Digital Ceramic Frit

- Durability – the ceramic ink is infused/baked into the glass for a very durable bond; the ink becomes part of the glass.
- Performance – improves solar performance of the glazing units, specifically in blocking excess heat from entering through the window. A low-e coating can be added on the same #2 surface without interfering with the frit.
- UV Stability – the ceramic ink/paint will not fade due to UV.
- Maintenance - The design will be applied to the #2 surface on the inside of of the insulating glazing unit, and will therefore be protected from the elements. No maintenance is required.
- Artwork will have 4-5 gradation levels
- Fine-tuning of the design by choosing the right opacity levels (e.g. 90%, 70%, 50%, 35%, 20% etc) with the help of a larger mock up is essential during the design phase.
- Leadtime - Approximately 8-10 weeks.



## Artist's Role

- Assist the architects in preparing the construction documents as well as with construction administration
- Will provide fully dimensioned and annotated drawings describing the artwork to the architects to incorporate them in the construction documents.
- During construction administration, review all related submittals and conduct site visits as needed to review



Questions?