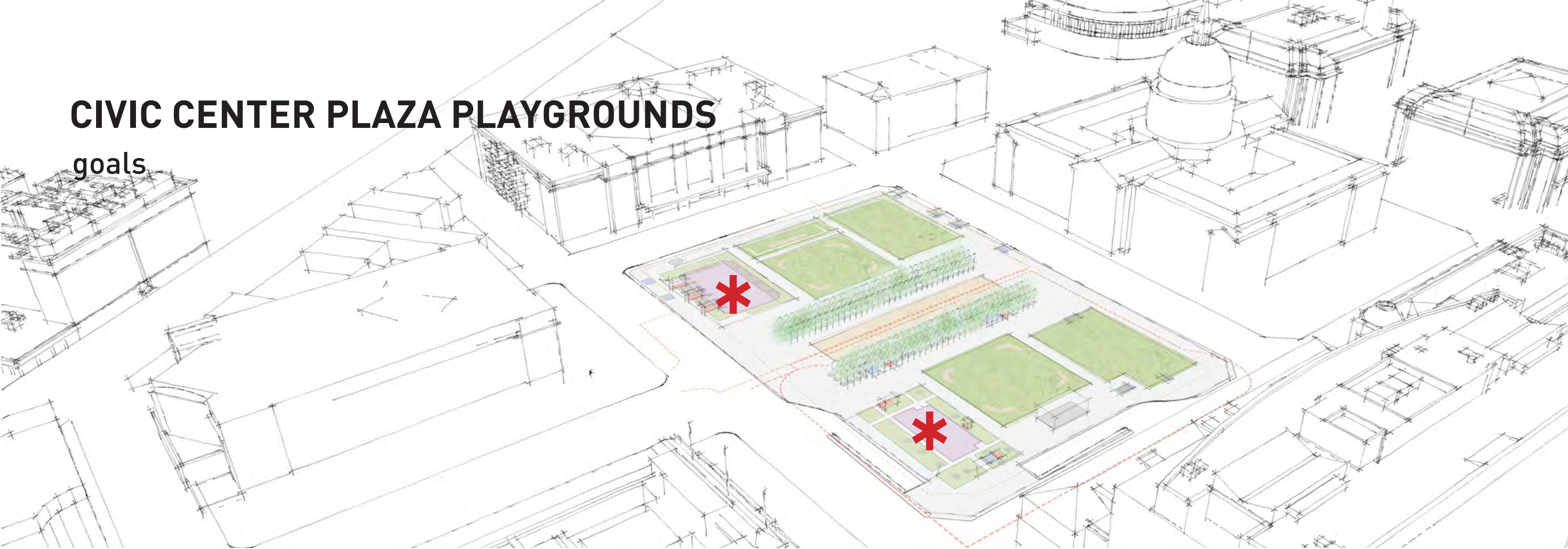


Helen Diller Civic Center Playgrounds



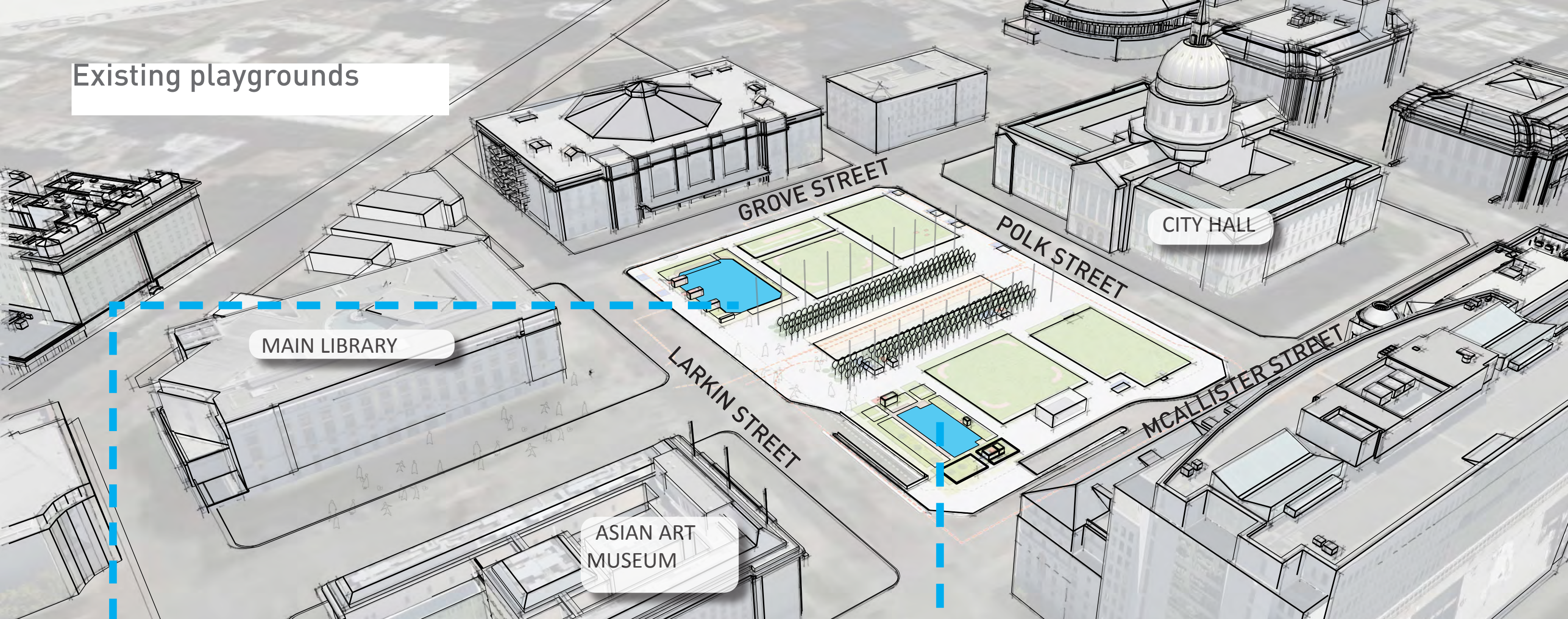
CIVIC CENTER PLAZA PLAYGROUNDS

goals



- Create an inviting, inspiring, fun and safe place for families
- Create unique and artful play spaces that fit with the scale of Civic Center
- Increase programming opportunities with cultural institutions
- Engage and activate children's sense of play

Existing playgrounds



South Playground, opened in 1998

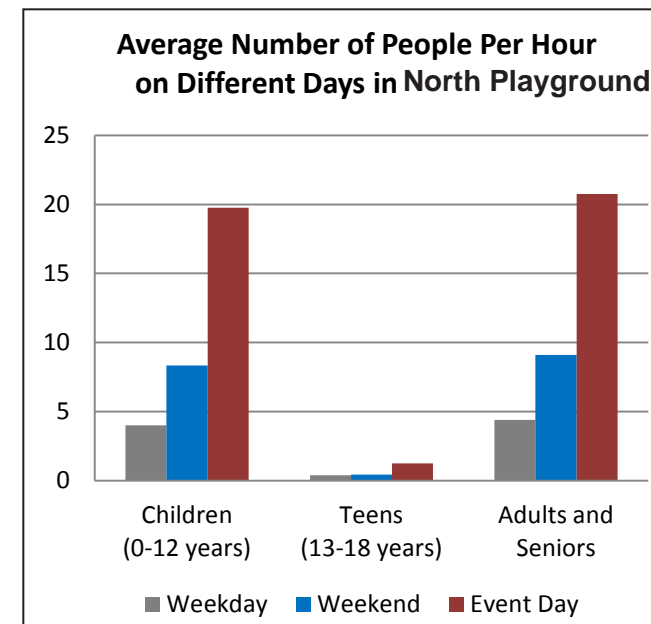
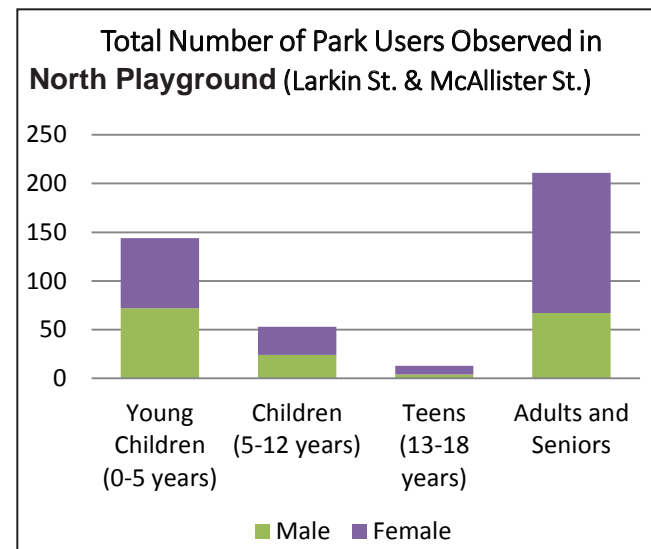


North Playground, opened in 1993

Data Collection, November 2013: Park Observation and User Survey



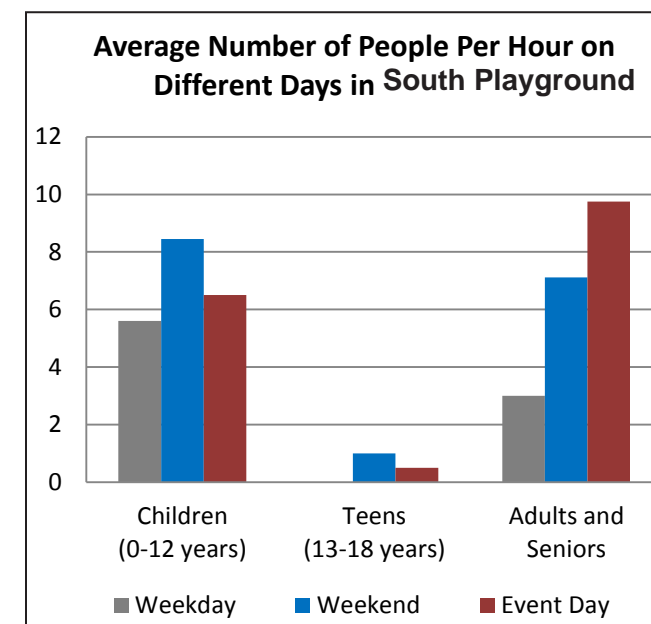
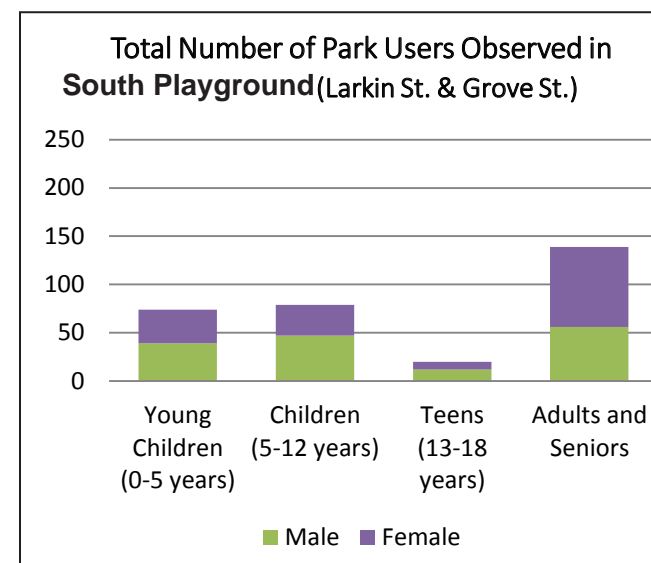
North Playground



- Surge of playground users on event days
- Some large school groups at lunchtime on a field trip
- Most (50%) visit playgrounds 1x per week
- 30% visit several times per week
- 10% visit daily
- 20% were first time visitors



South Playground

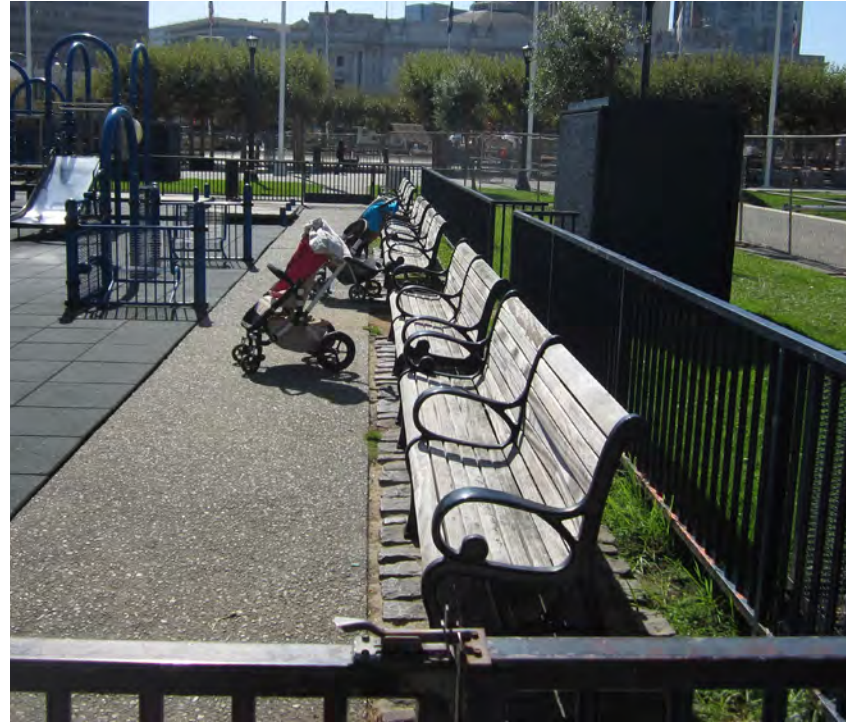


CIVIC CENTER PLAZA PLAYGROUNDS: today

What we heard



Vent structures impact the playground



Aging equipment and fencing



Worn and tired surfaces



No clear entry

What is working

- Great location
- Near many youth + family destinations
- The fences creates an enclosed space

What is not working

- Current equipment is not challenging enough for older youth and teens
- Flooring is old + wood is splintering
- No group sitting areas
- Lack of trashcans
- Tall vent structures impact the playgrounds
- Views into the playground are blocked at the corners
- Unclear pedestrian access to playgrounds feels unwelcoming
- Low evening lighting makes the space feel unsafe

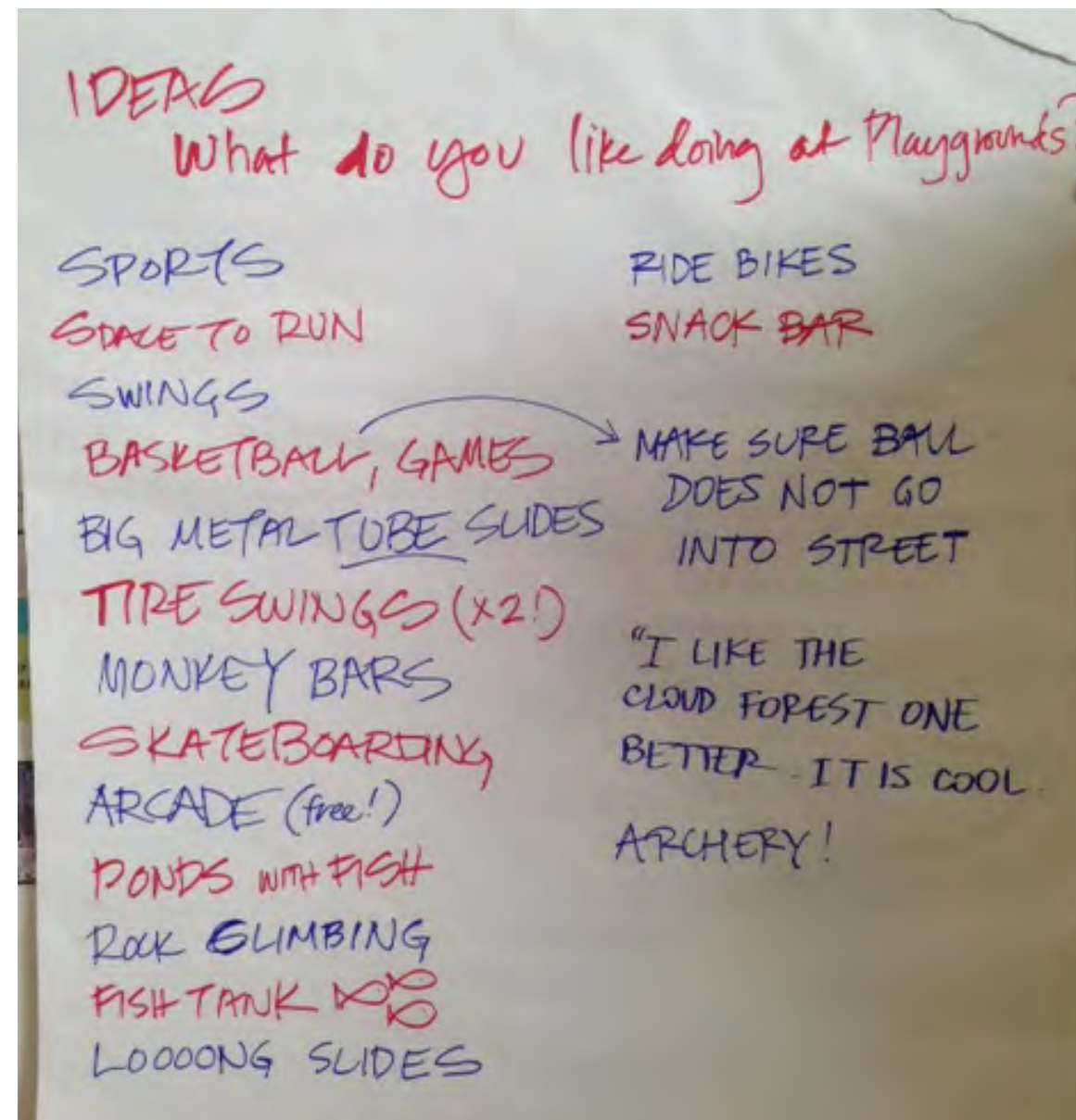
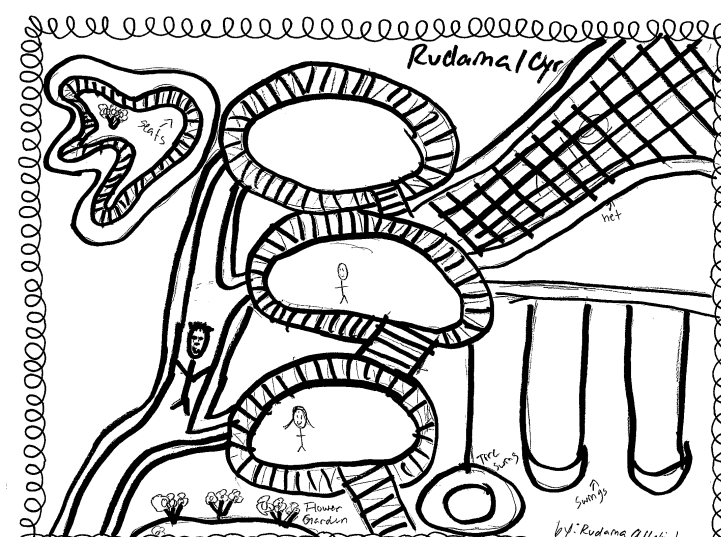
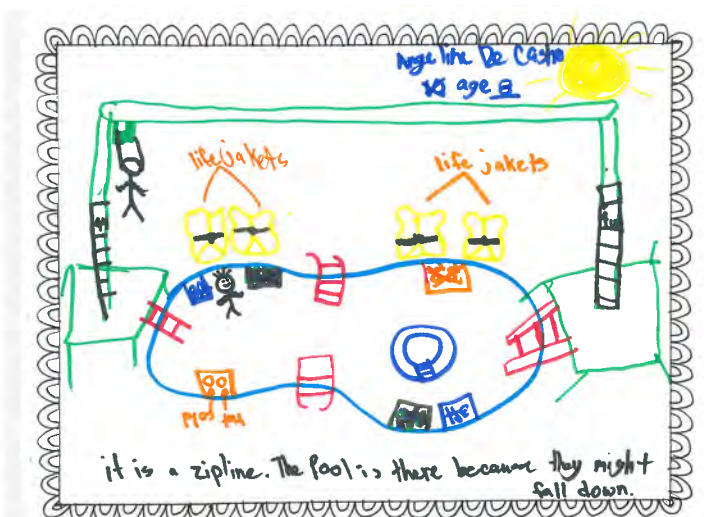
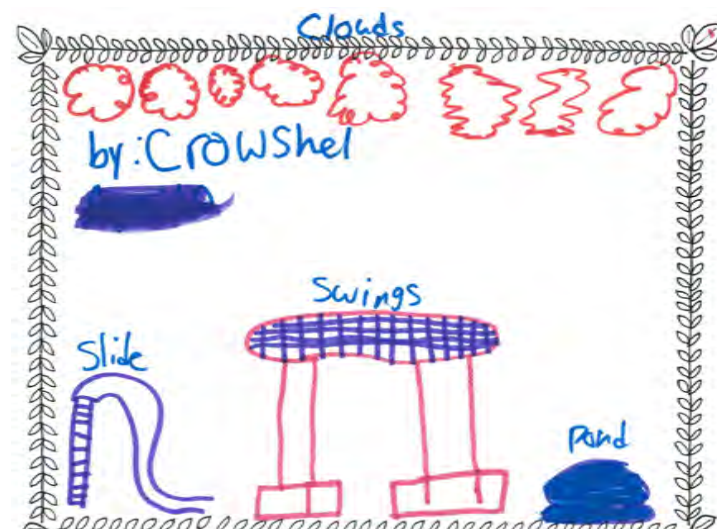
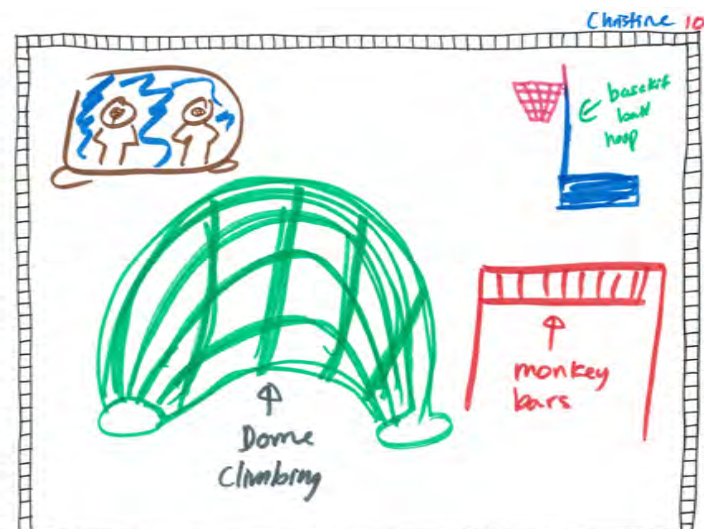
Playground Design / Community Outreach Process

- July 15, 2014 - First Community Meeting - Presented the project, existing conditions and gathered information about use.-40 people
- August 6, 2014 – Site Focus Group – 20 people
- September 03, 2014- Tenderloin Network Bay Area Women and Children Center Focus Group at Library- 40 people
- October 02, 2014 – Second Community Meeting- presented concepts
- October 21th, 2014 – Site outreach at playgrounds
- October 23, 2014 – Kids focus group at Tenderloin School- approx. 20 kids
- November 5, 2014 - Kids focus group #2 at Tenderloin School- 5th grade– 32 kids
- November 6th , 2014- Tenderloin Network Bay Area Women and Children Center Focus Group at DeMarillac Academy - 30 people
- January 7, 2015 –Third Community Meeting- present concept design
- April 16, 2015- Presentation to Asian Art Museum staff
- April 30, 2015- Presentation to SF Public Library staff
- May 13, 2015- Tenderloin Network Bay Area Women and Children Center at SF Public Library – 30-40 people
- May 20th, 2015- Civic Center Community Benefit District
- June 9th, 2015 – Presentation to Alliance for a Better District 6



School workshops





Playground Design / Agency + Organizations Coordination

City Agencies

SF Recreation and Parks Department
SF Planning Department
SF Department of Public Works
SF Public Utilities Commission
SF Department of Real Estate
Office of Mayor Ed Lee
Mayor's Office of Housing & Community Development
Supervisor Jane Kim's Office

Other Institutions and Organizations

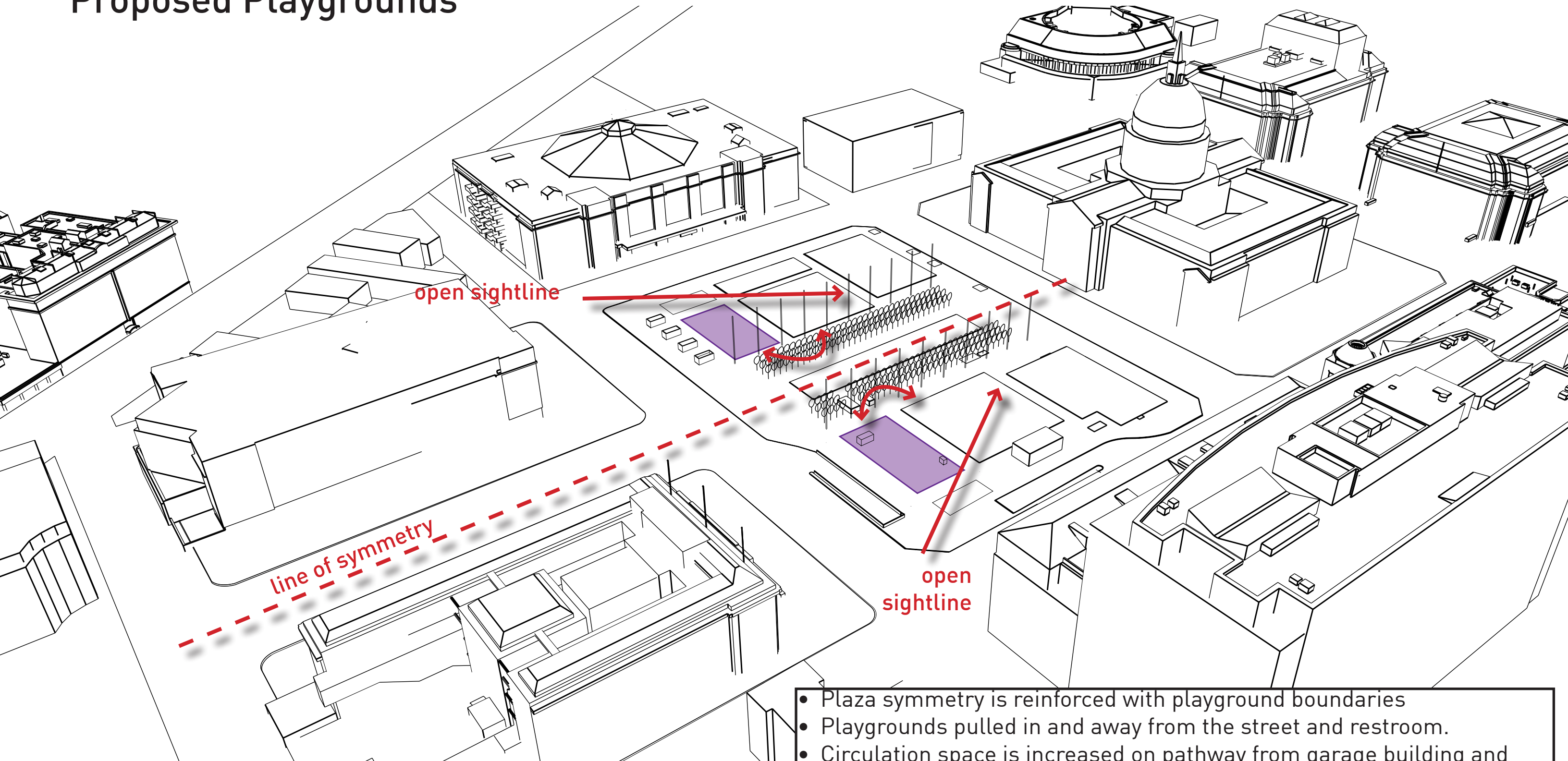
Civic Center Community Benefit District
SF Public Library
Asian Art Museum
Bay Area Women's & Children's Center
Tenderloin School
Bill Graham Auditorium / Another Planet Entertainment



Playground Design / What We Heard

- **Equal:** Two Equally Great Play Areas
- **Inclusive:** Play for all, each playground includes all ages and abilities
- **Safe and Secure:** Playgrounds are enclosed and well lit with open sight-lines
- **More Fun!:** Play experiences are enriched
- **Location:** Playgrounds are next to other key destinations
- **Key experiences:** Include swinging, sliding, connection to nature
- **Comfort:** Add seating, shade

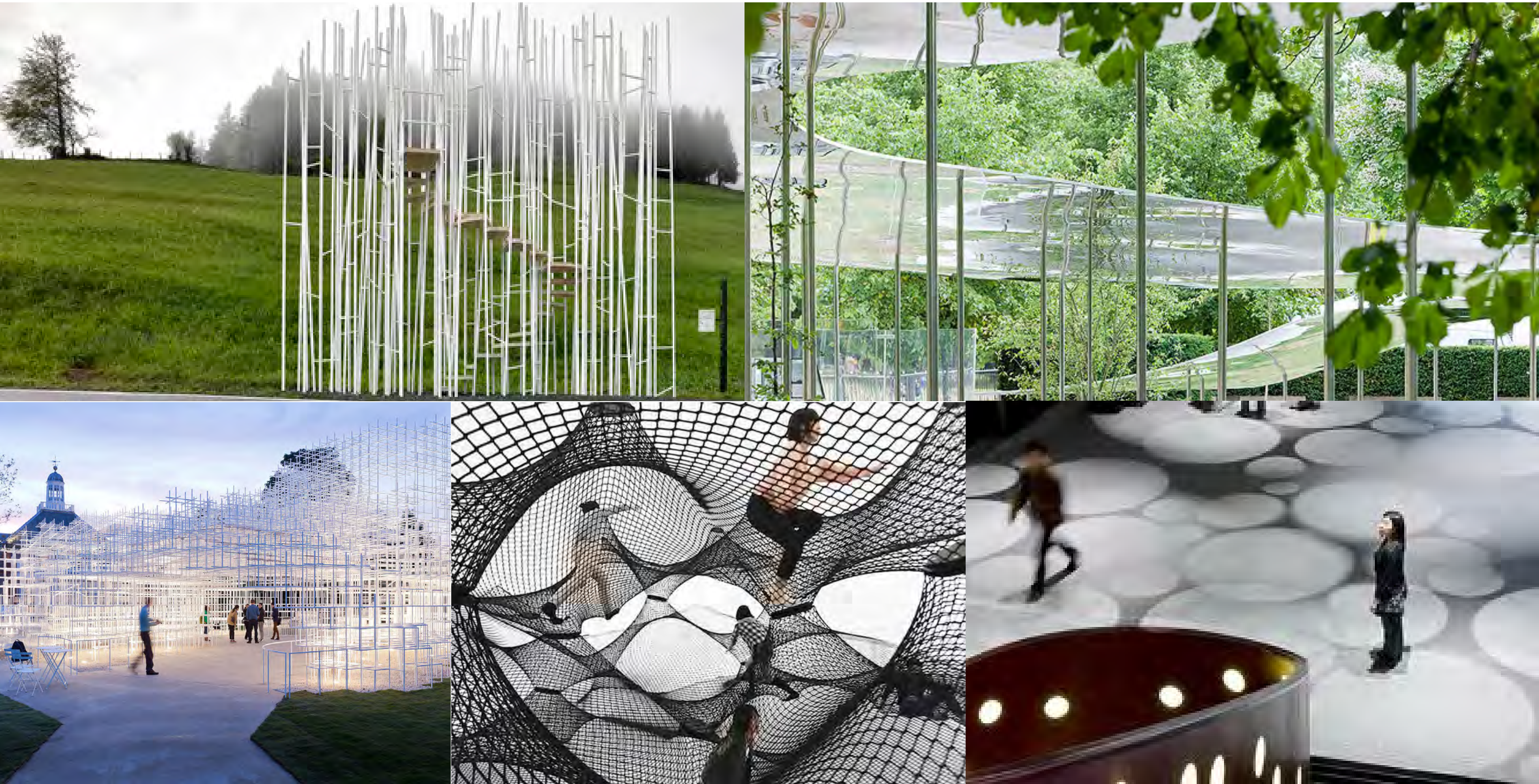
Proposed Playgrounds



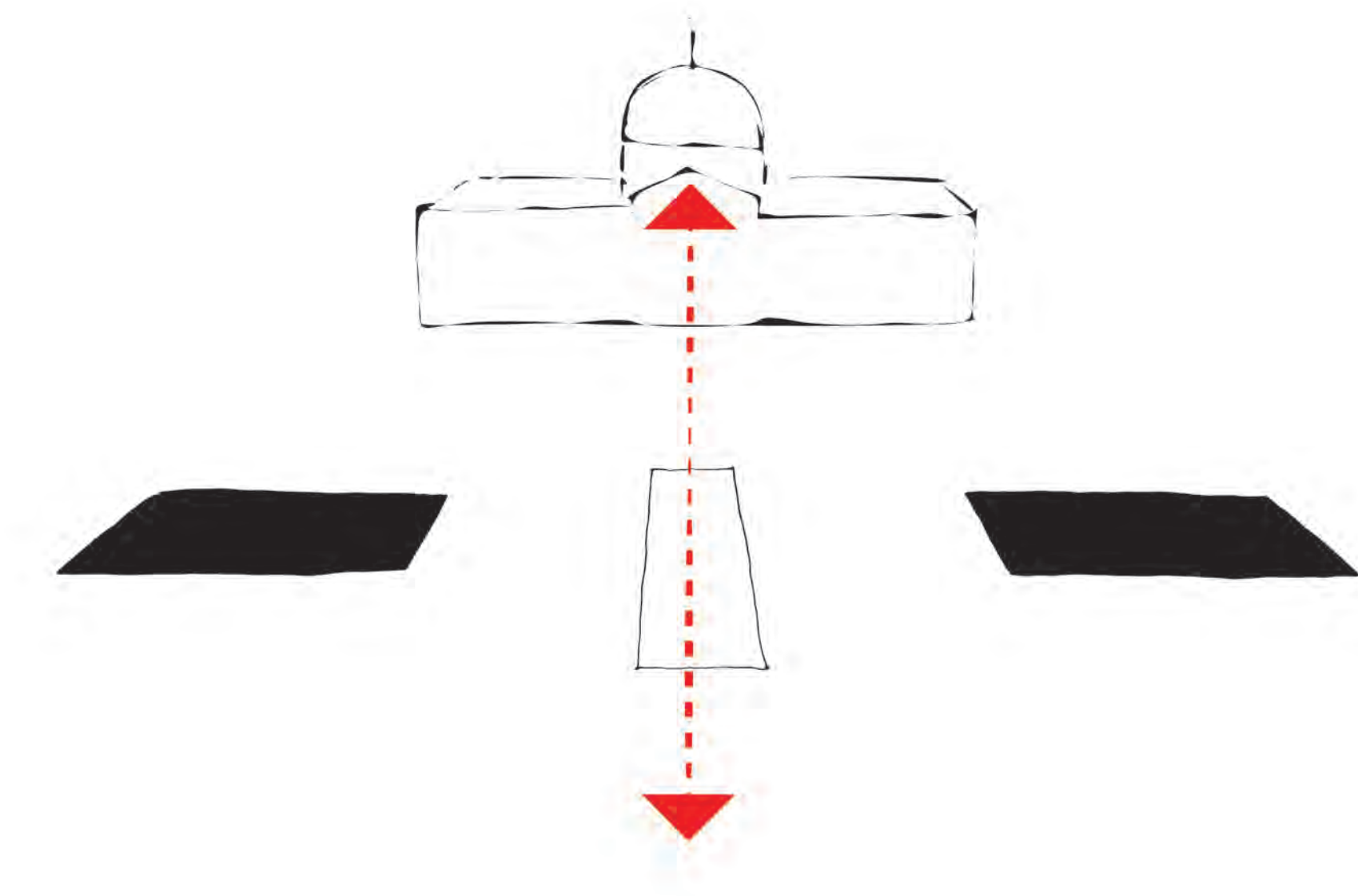
- Plaza symmetry is reinforced with playground boundaries
- Playgrounds pulled in and away from the street and restroom.
- Circulation space is increased on pathway from garage building and around Brooks Hall vents.
- Sightlines from the corners are created.
- Line of symmetry with City Hall is enhanced.



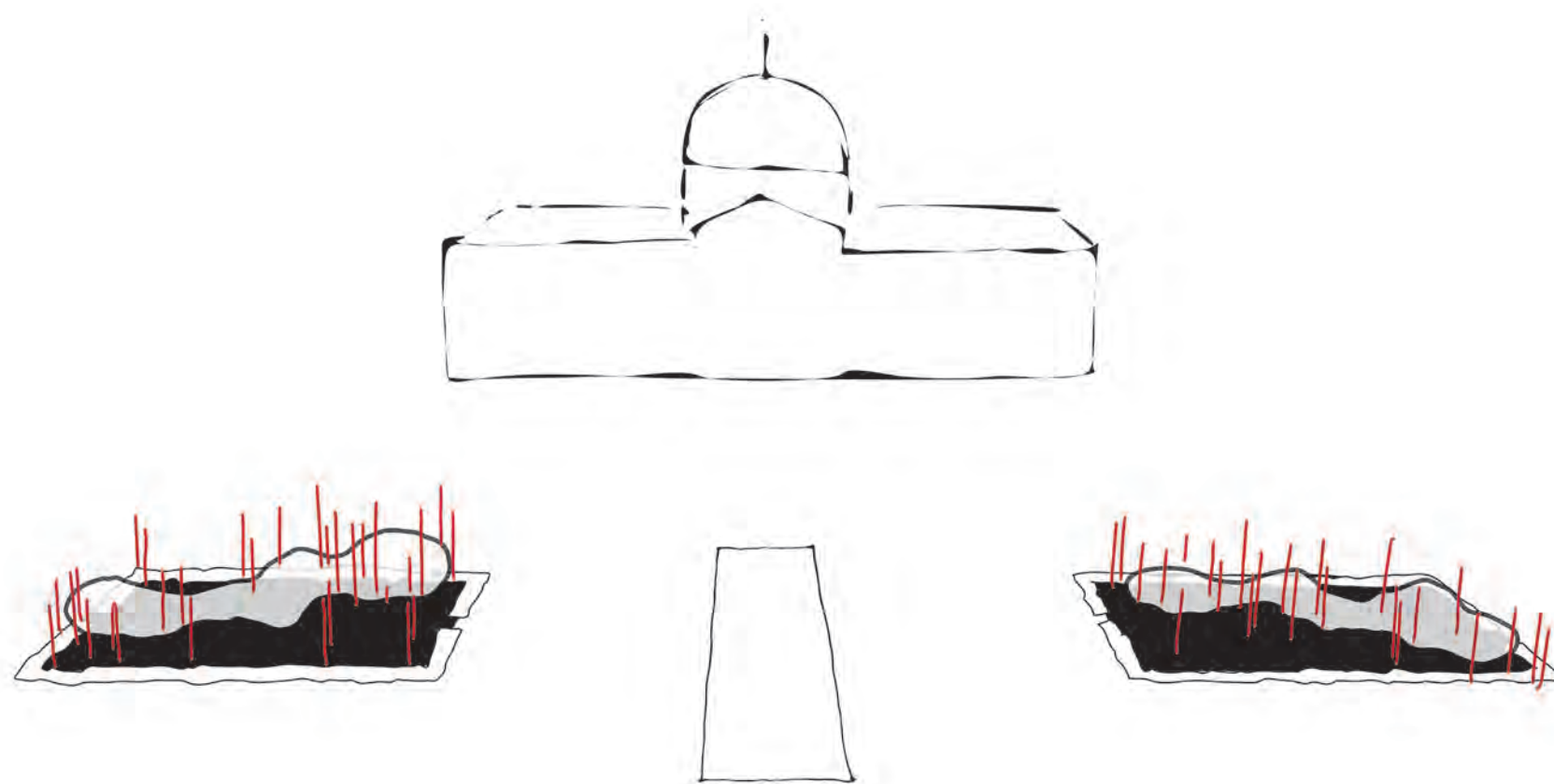
Cloud Forest



two symmetrical playgrounds



tethered cloud sculpture

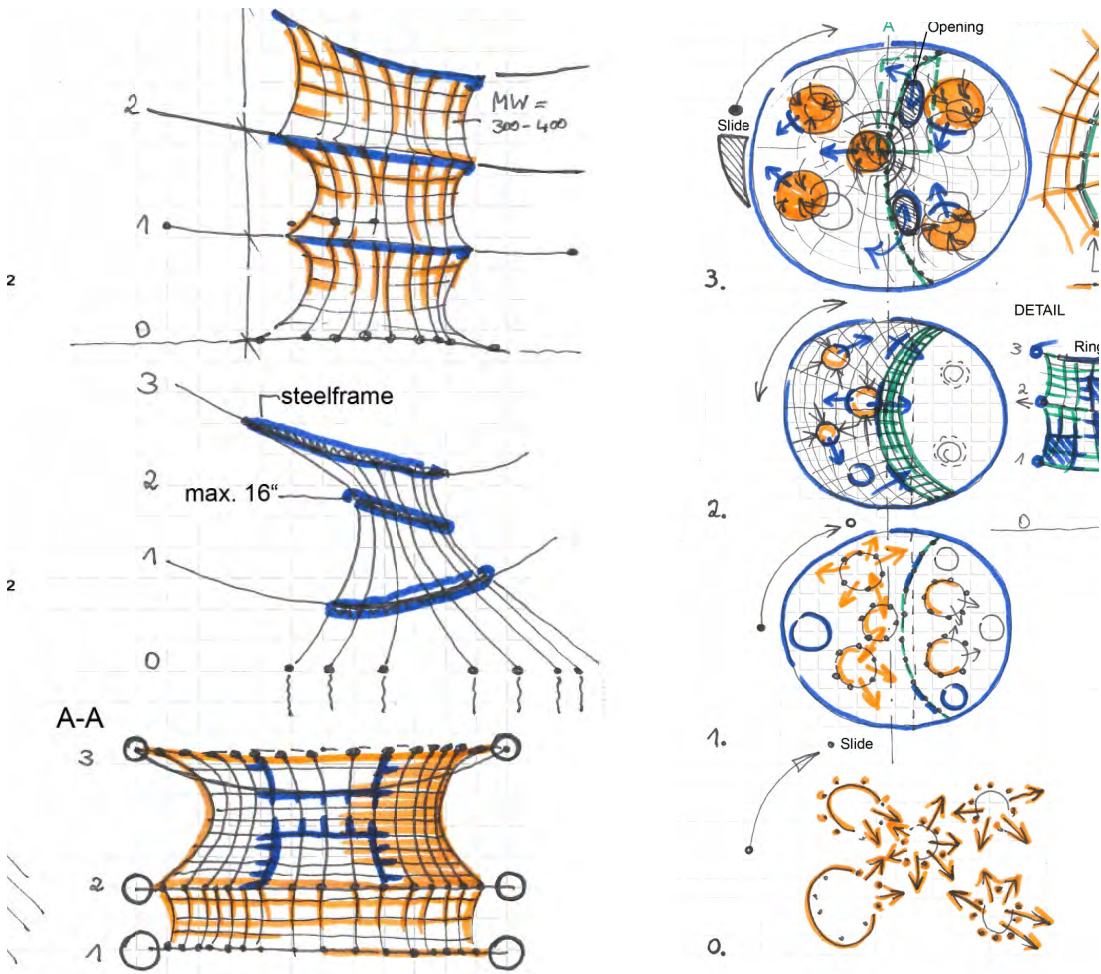
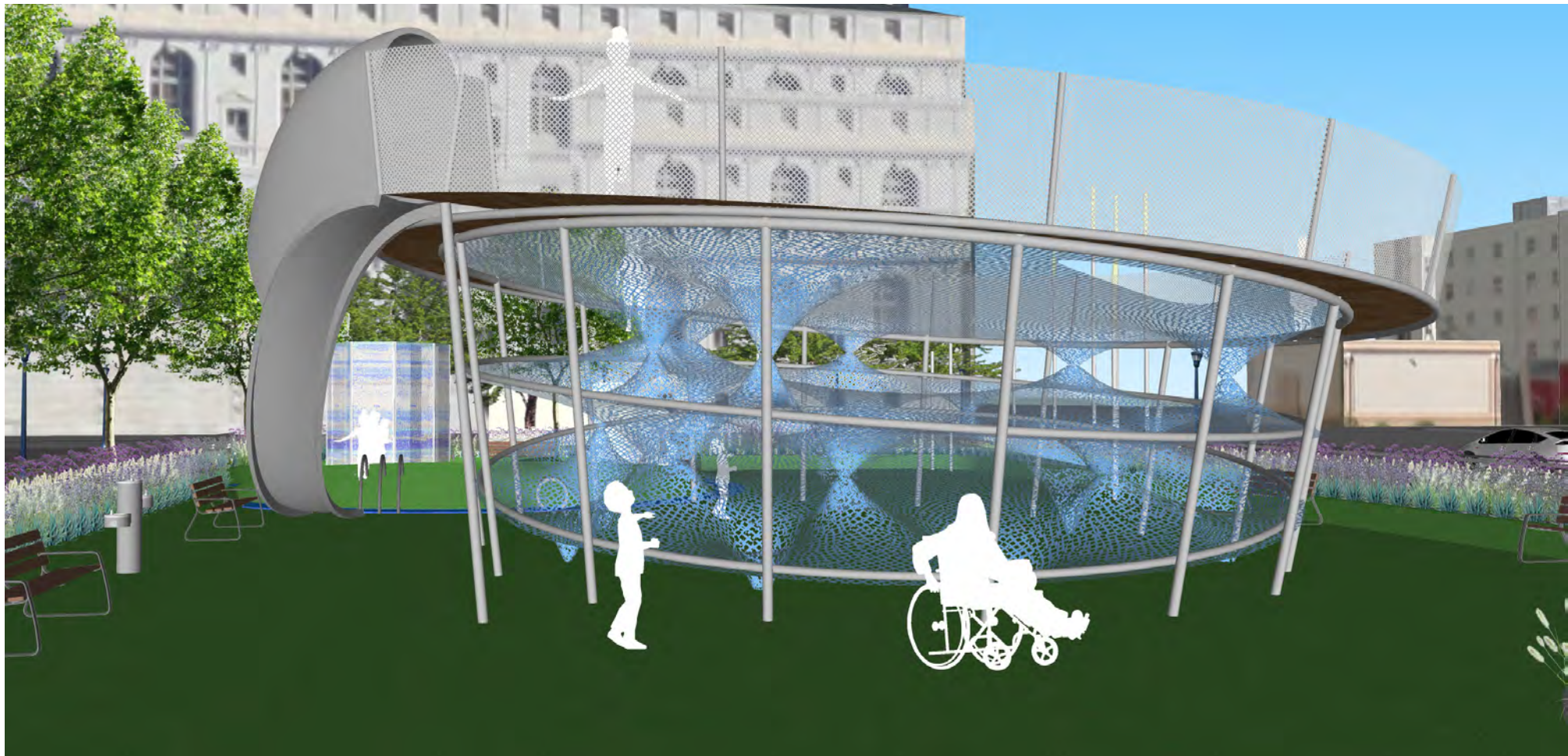
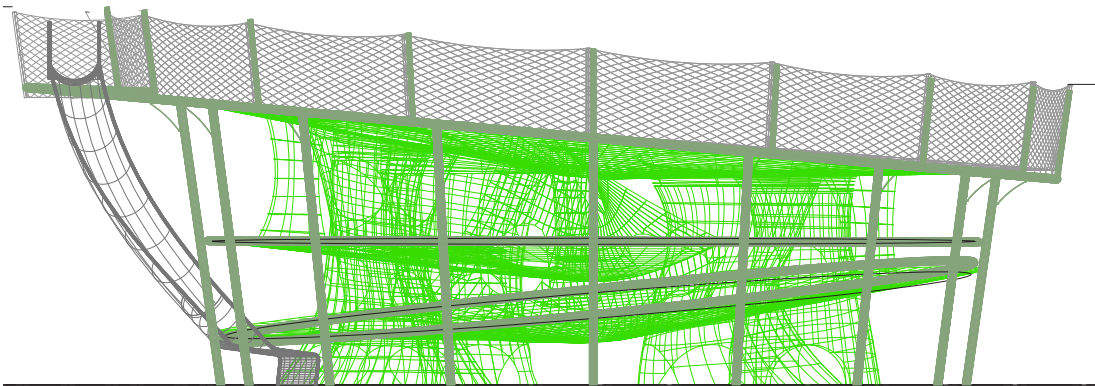


North Playground Overview



North Playground

Sky punch

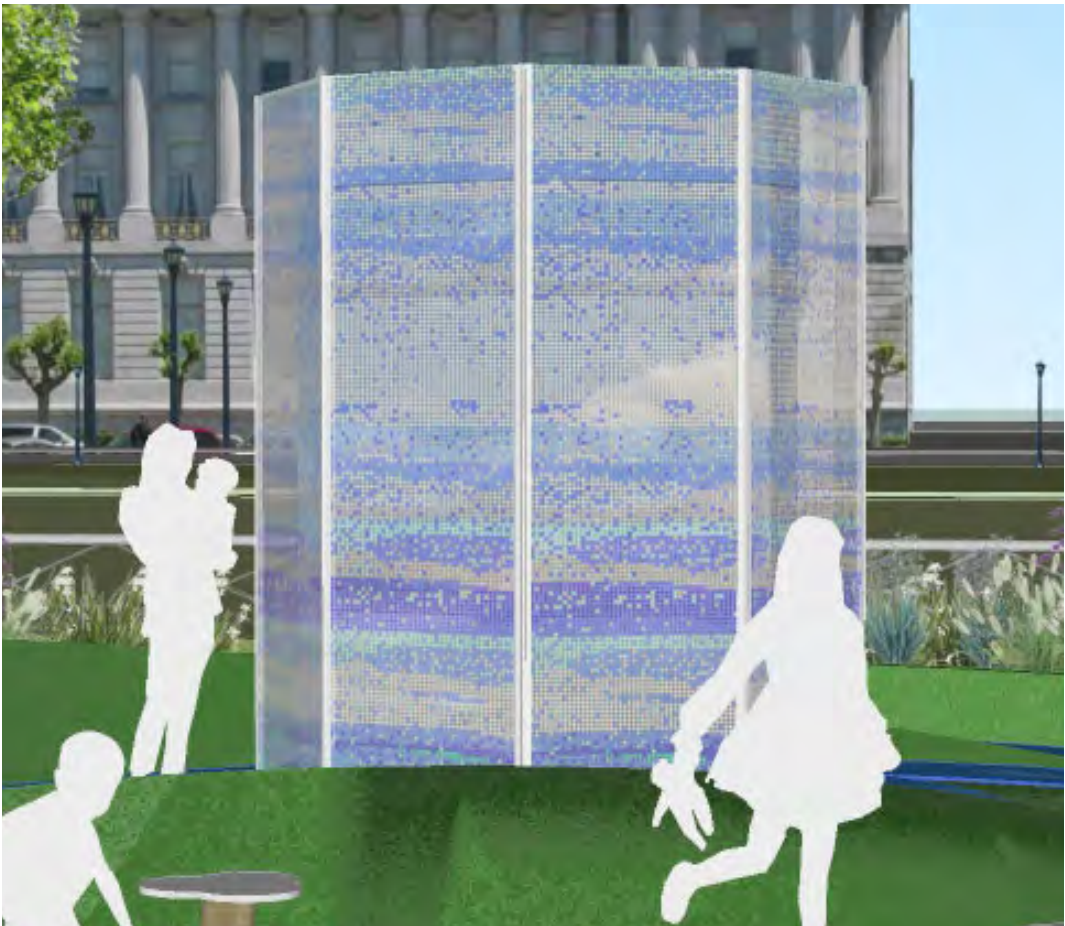
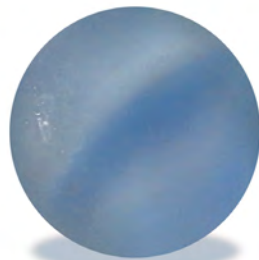
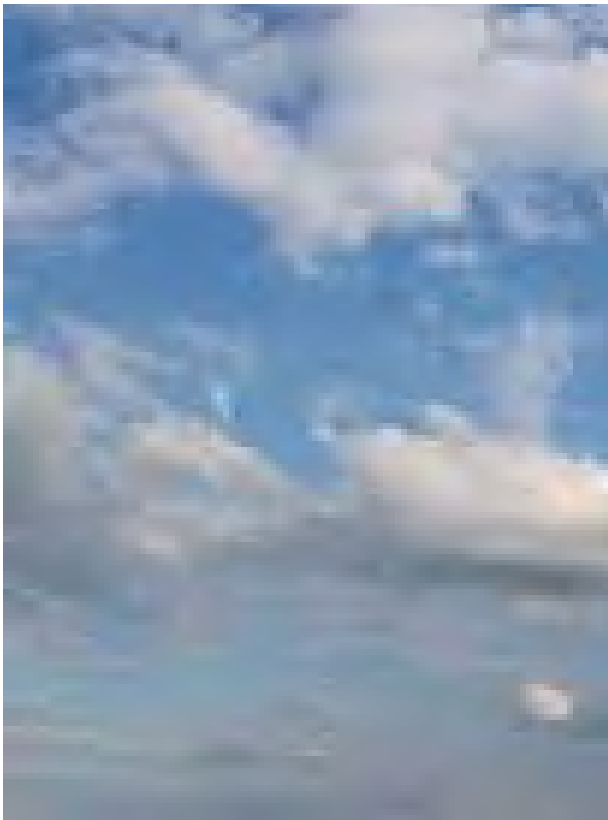


North Playground Ripple pond

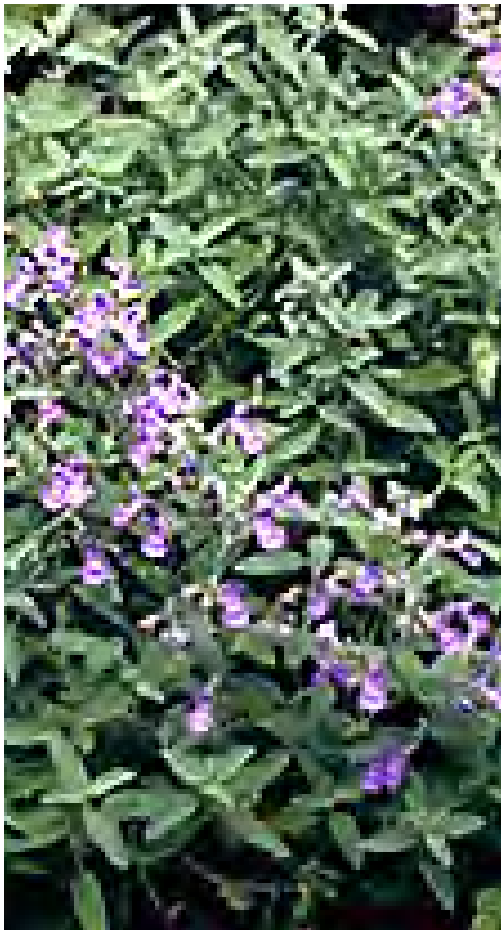
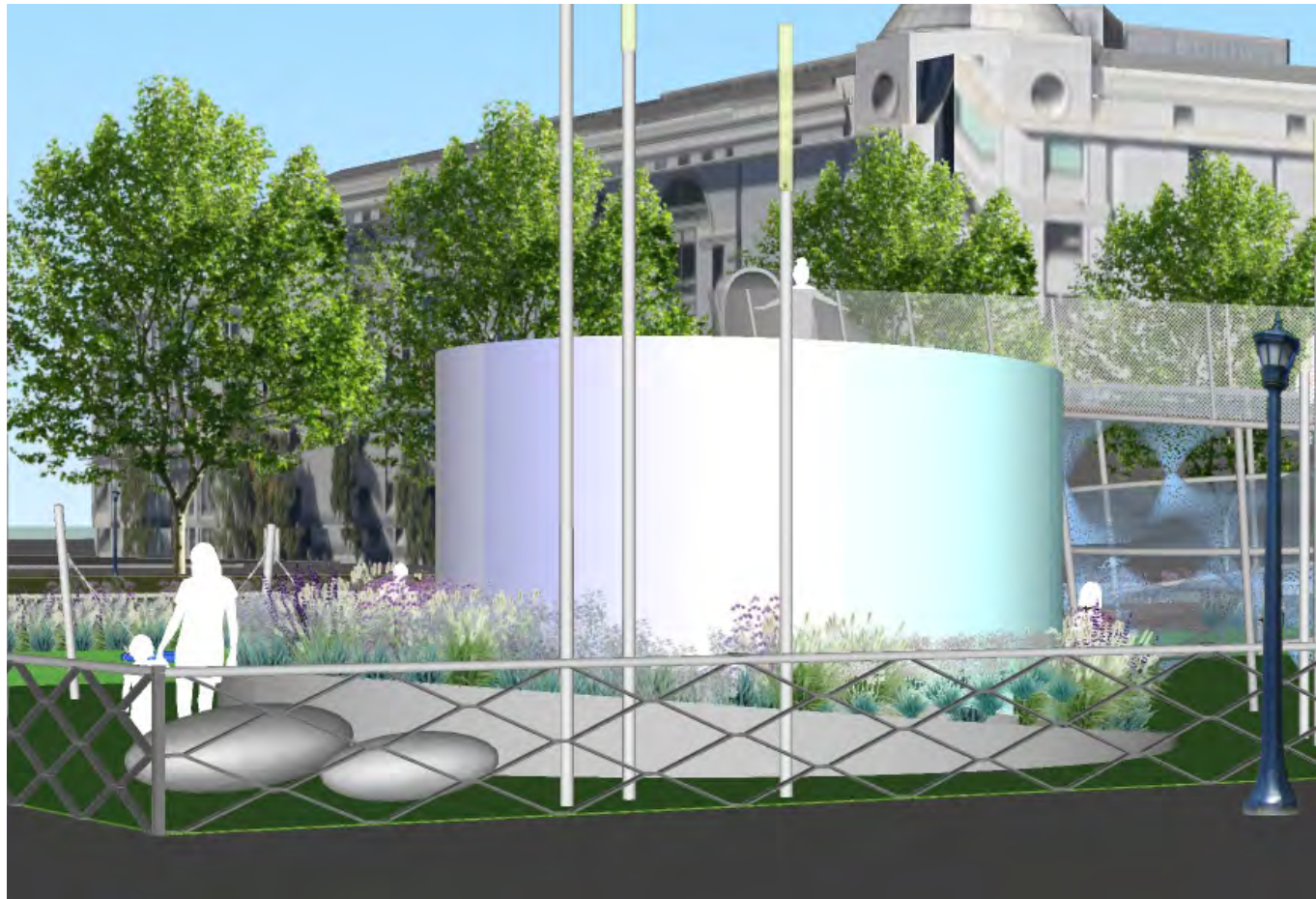


North Playground

Cloud drift fairytale



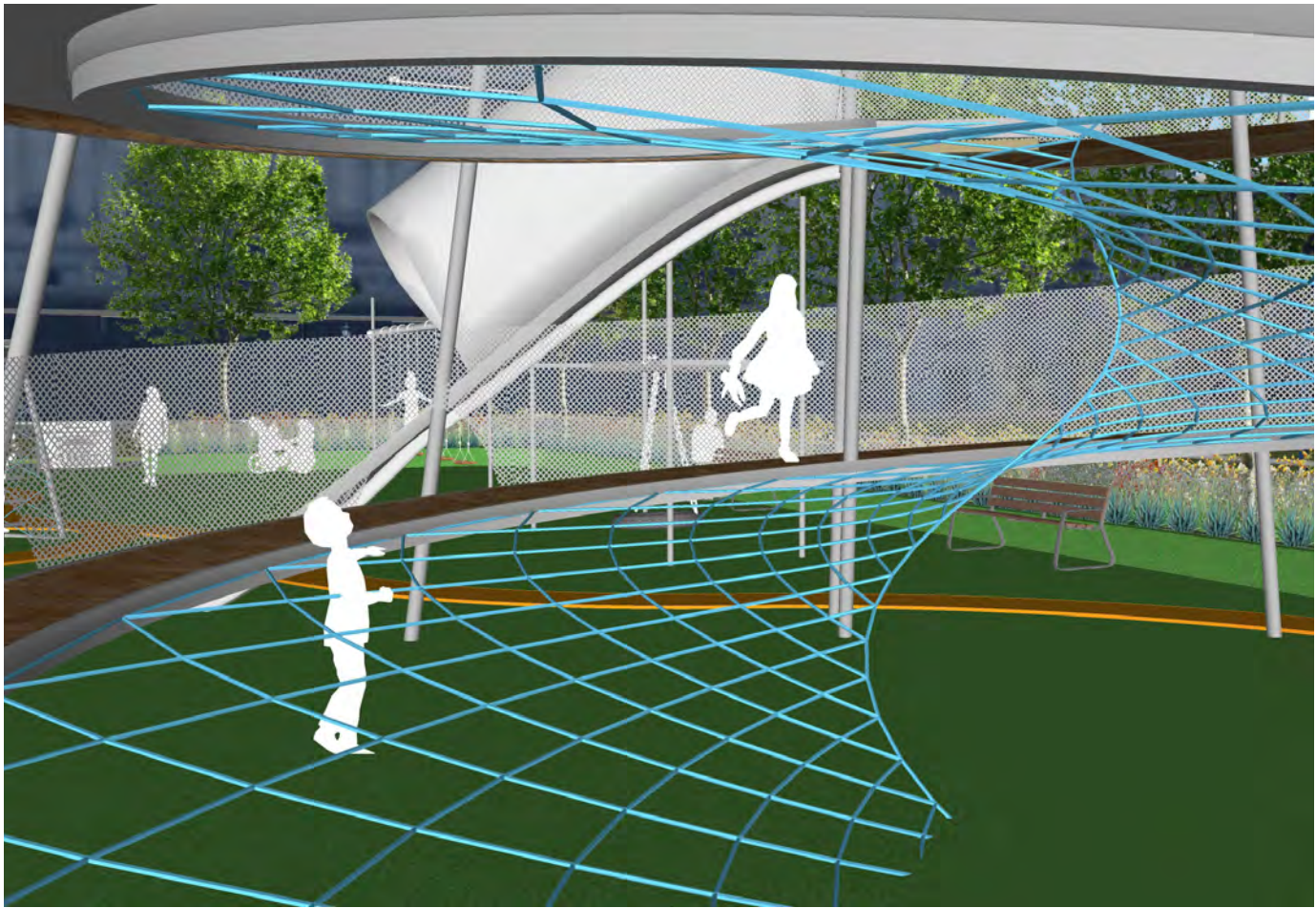
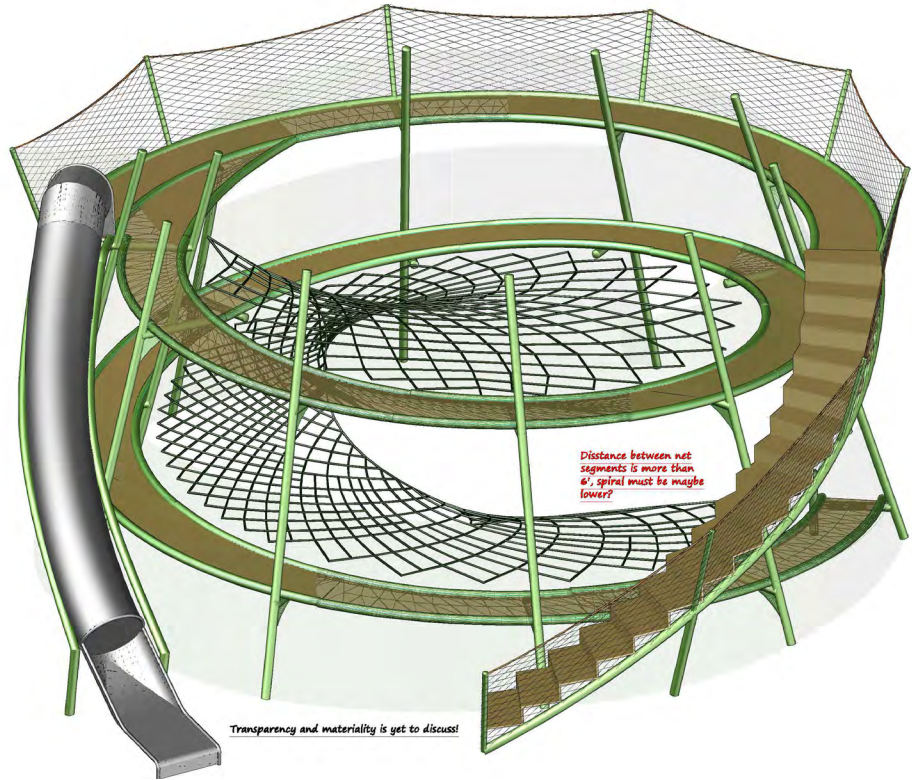
North Playground Sunrise Butterfly Garden



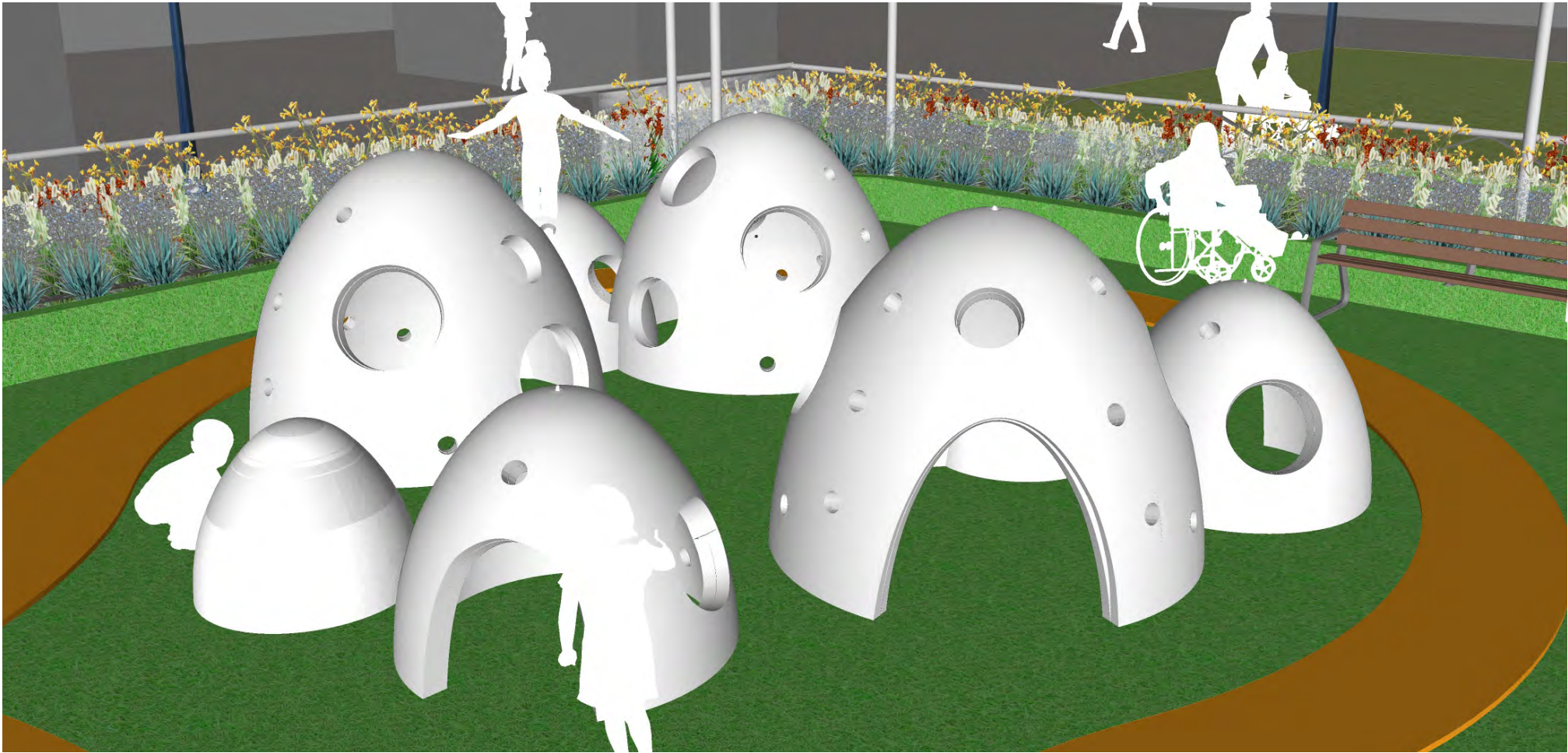
South Playground Overview



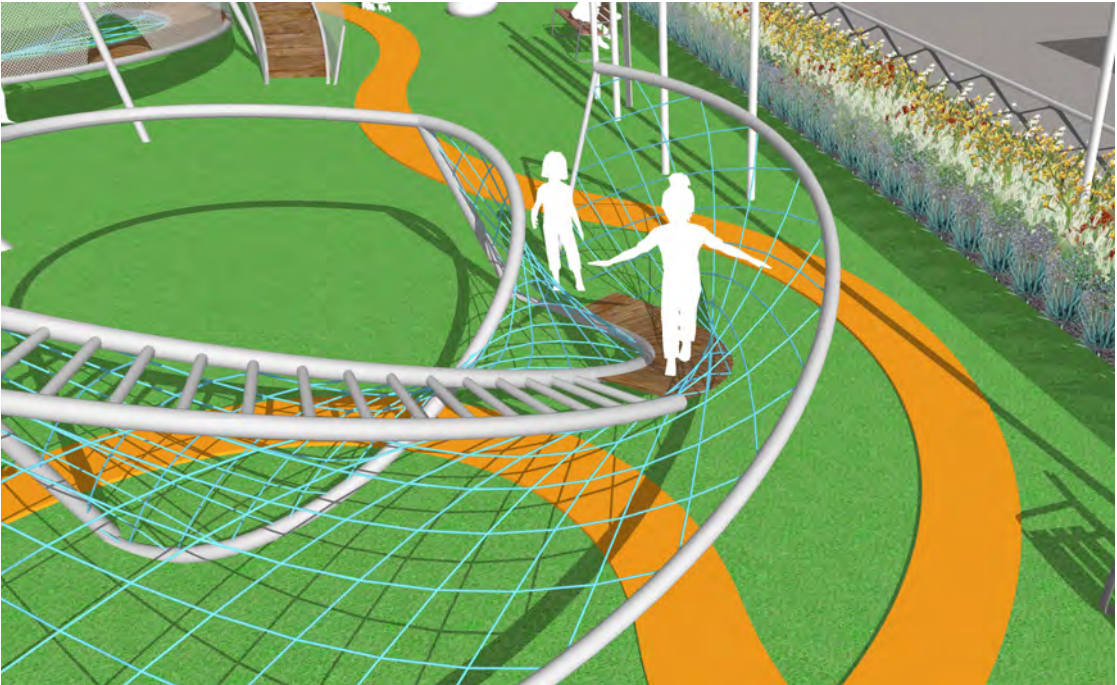
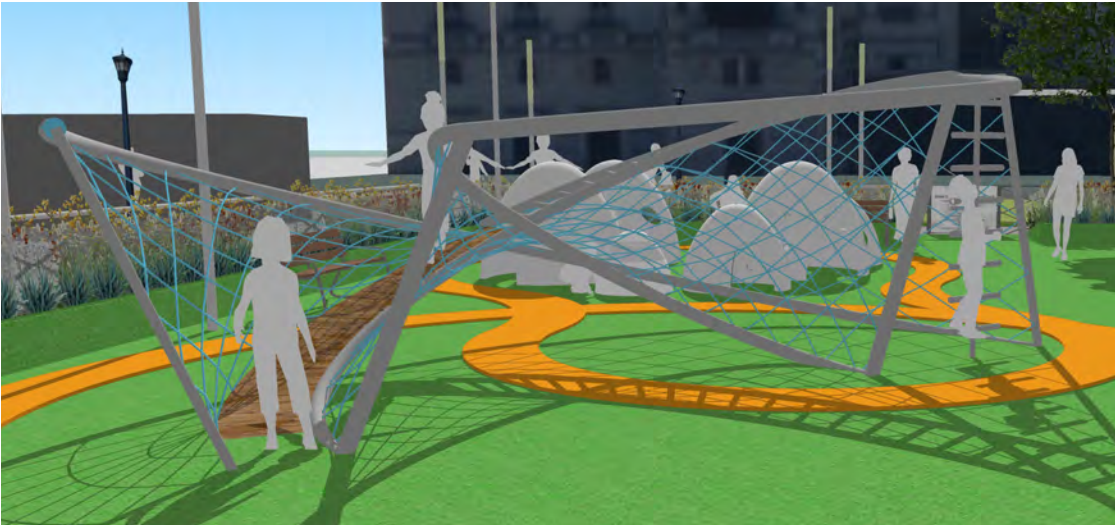
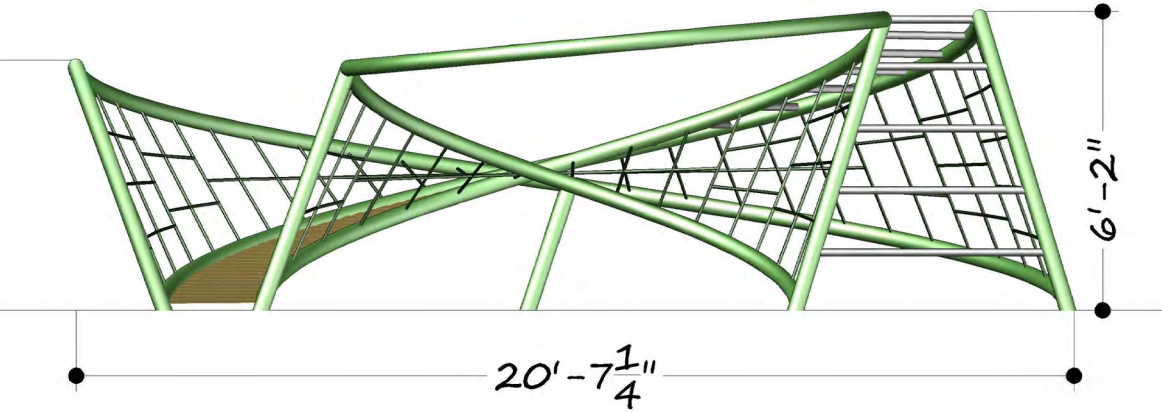
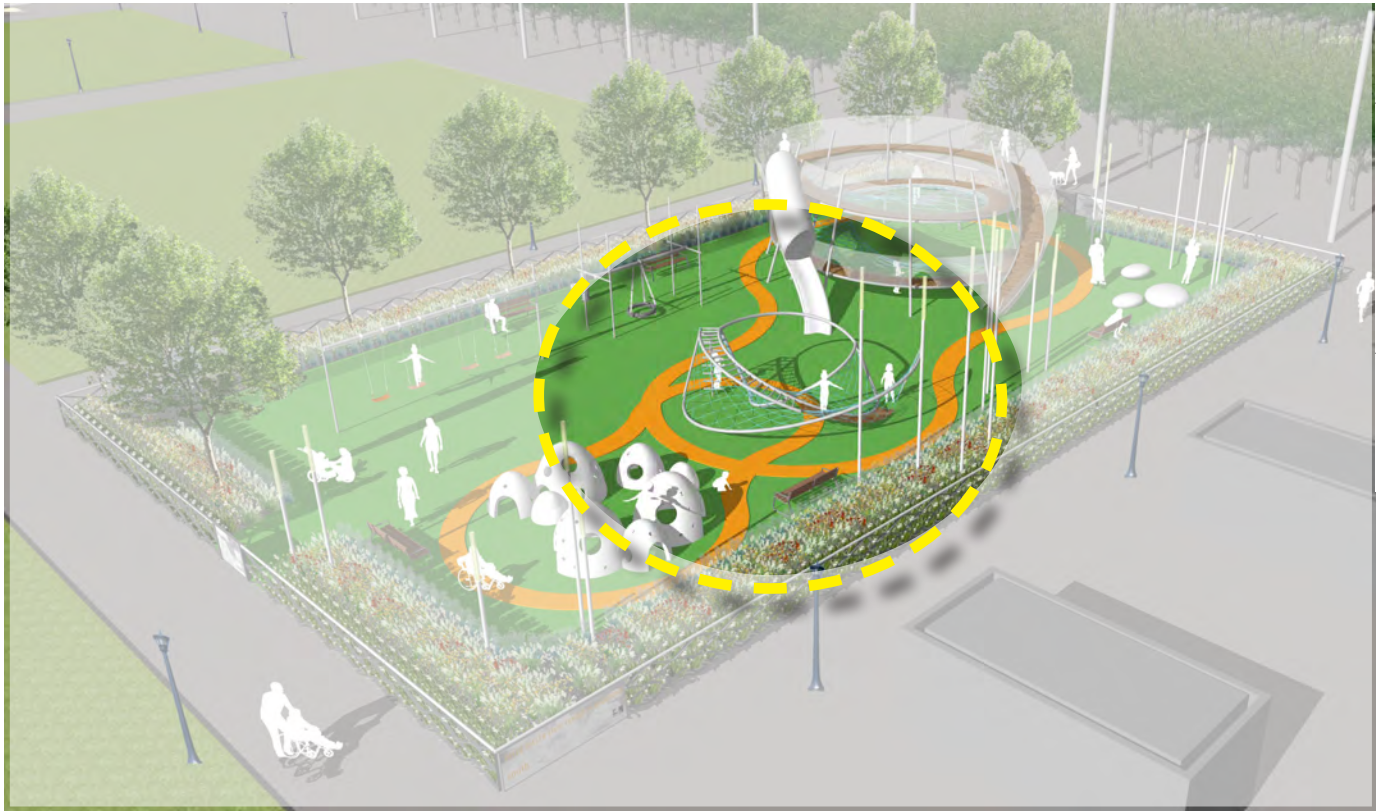
South Playground Lenticular cloud



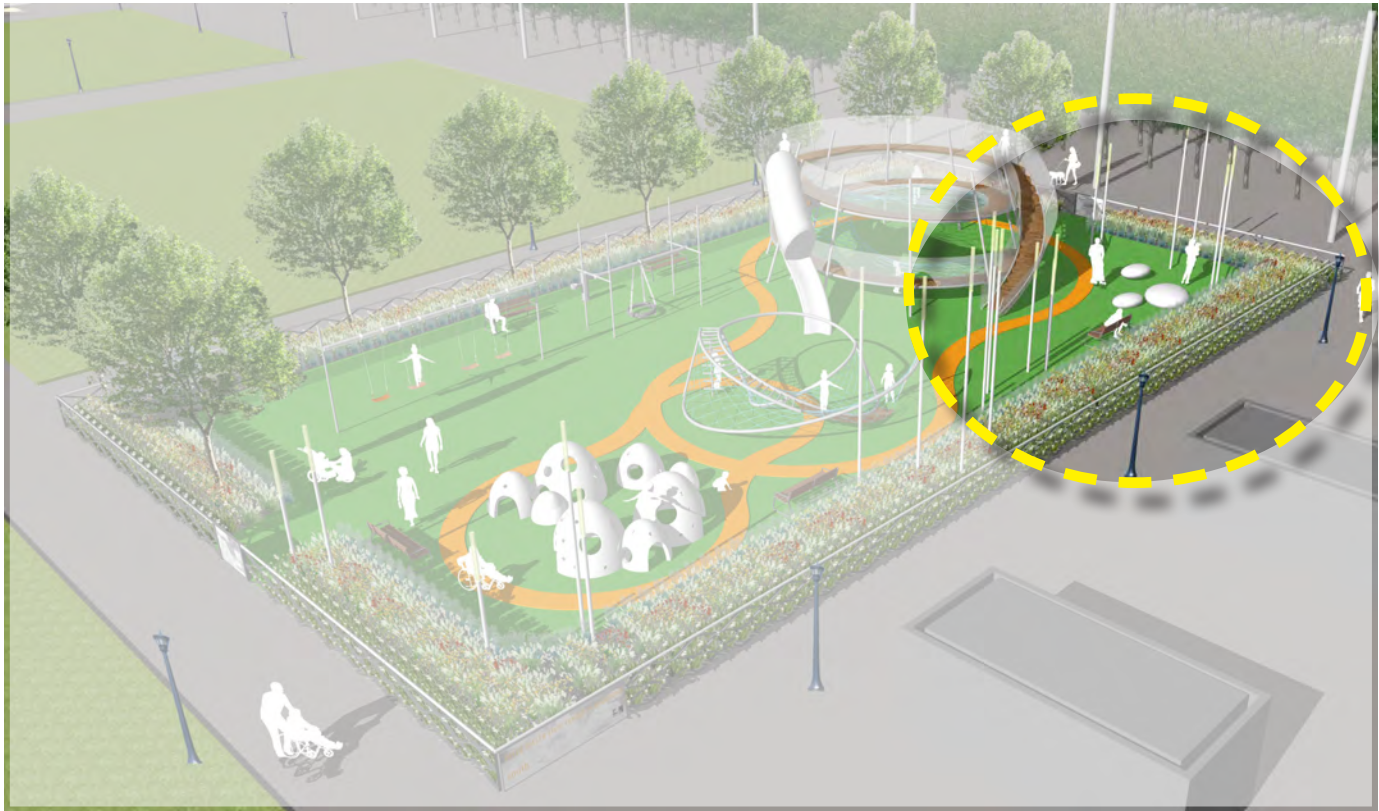
South Playground Cumulus City



South Playground Fog valley



South Playground Stratus garden

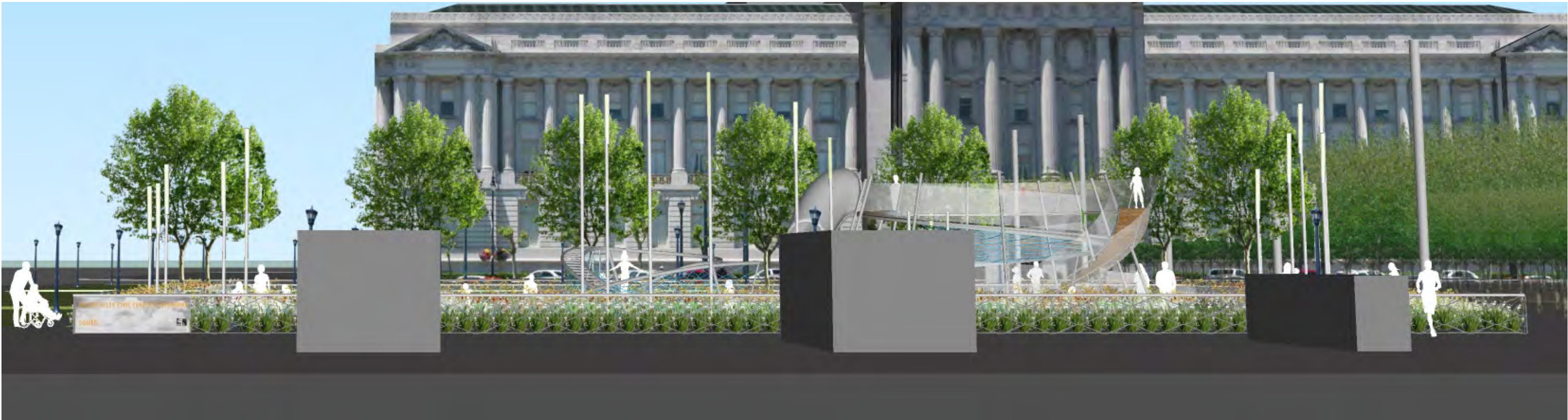


Playground Connections

Pole forest



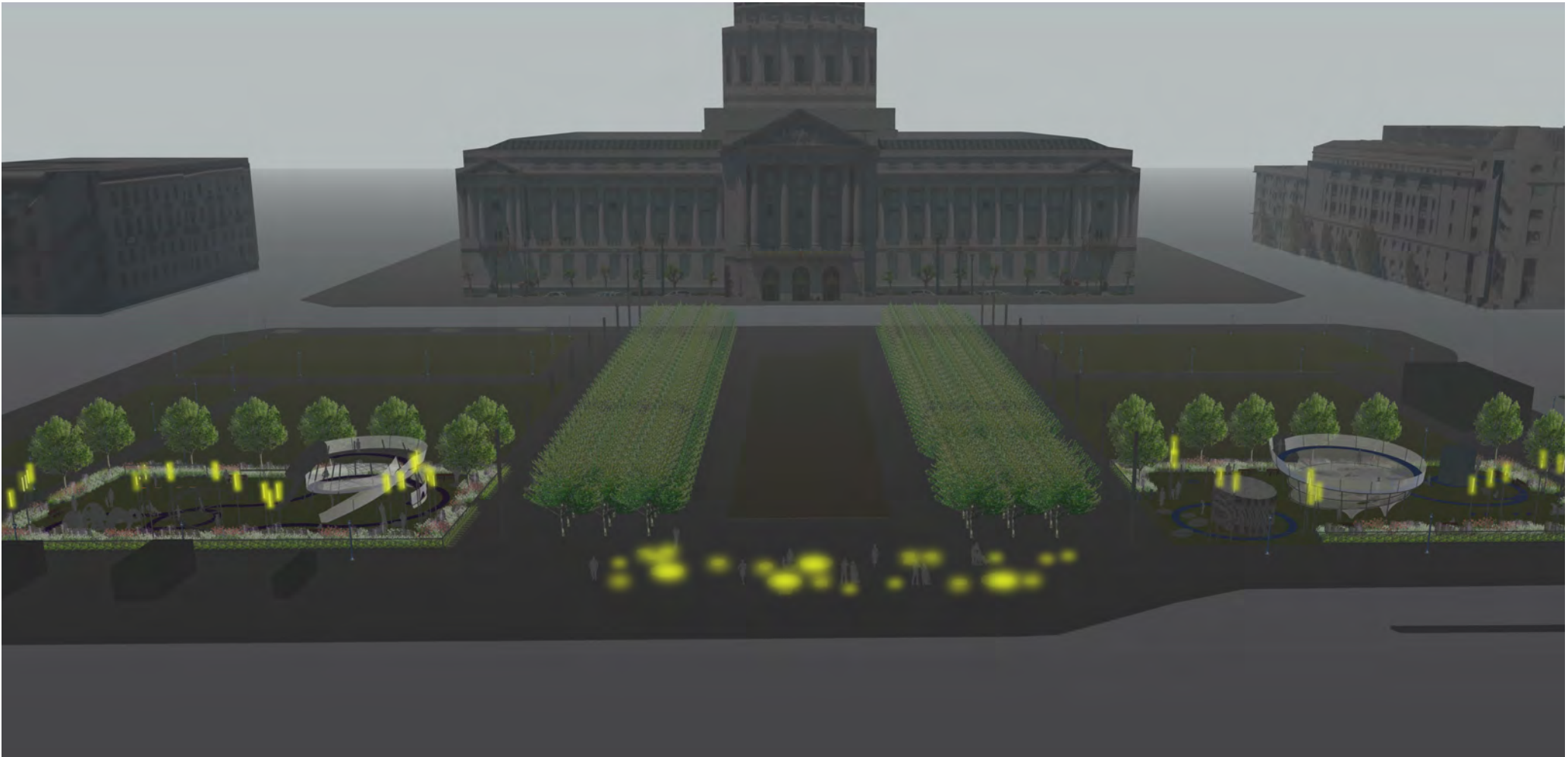
views from sidewalk



views from sidewalk

Playground Connections

Pole forest: Light



Playground Connections

Planting



Flowering border



Tree



South flowering



North flowering



Flowering internal

Playground Connections

Furniture, Fence, Lights



Playground Connections Signage



Donor Signage



Gate and Signage



West Signage



Helen Diller Civic Center Playgrounds

