

10
GUY PLACE

VERTICAL PLANTED COLUMNS
4' W X 4' D X 25' HT

UPLIGHTING

OUTDOOR ROOMS W/ WATER
FEATURES

515
FOLSOM ST.

BAMBOO PLANTING
SCREEN

LANDSCAPE FORMS
"STRATA" BENCH

RECESSED COLD
SPRING BLACK
GRANITE POOL

BOULDERS

18" x 36" IRIDIAN
GRANITE PAVERS

SCULPTURAL
GRANITE SLAB

FERN GROTTOS

CANYON VIEW TO
DOWNTOWN

330
1ST STREET

326
1ST STREET

501
FOLSOM ST.

CLIFF LOWE & ASSOCIATES
LIVABLE STREETSCAPE DESIGN

PLANTING AT SIDEWALK
FRONTAGE TO MATCH
STREETSCAPE PLANTING

ARTS COMMISSION
FENCE PANELS

GUY PLACE

ENTRY PLAZA W/
PLANTING & SEATING

ENTRY GATES

EASEMENT ACCESS GATE

BAMBOO SCREEN PLANTING

VERTICAL PLANTED
COLUMNS

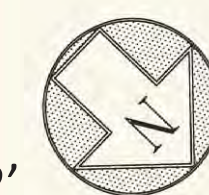
ACCESS
RAMP

TW 10.5

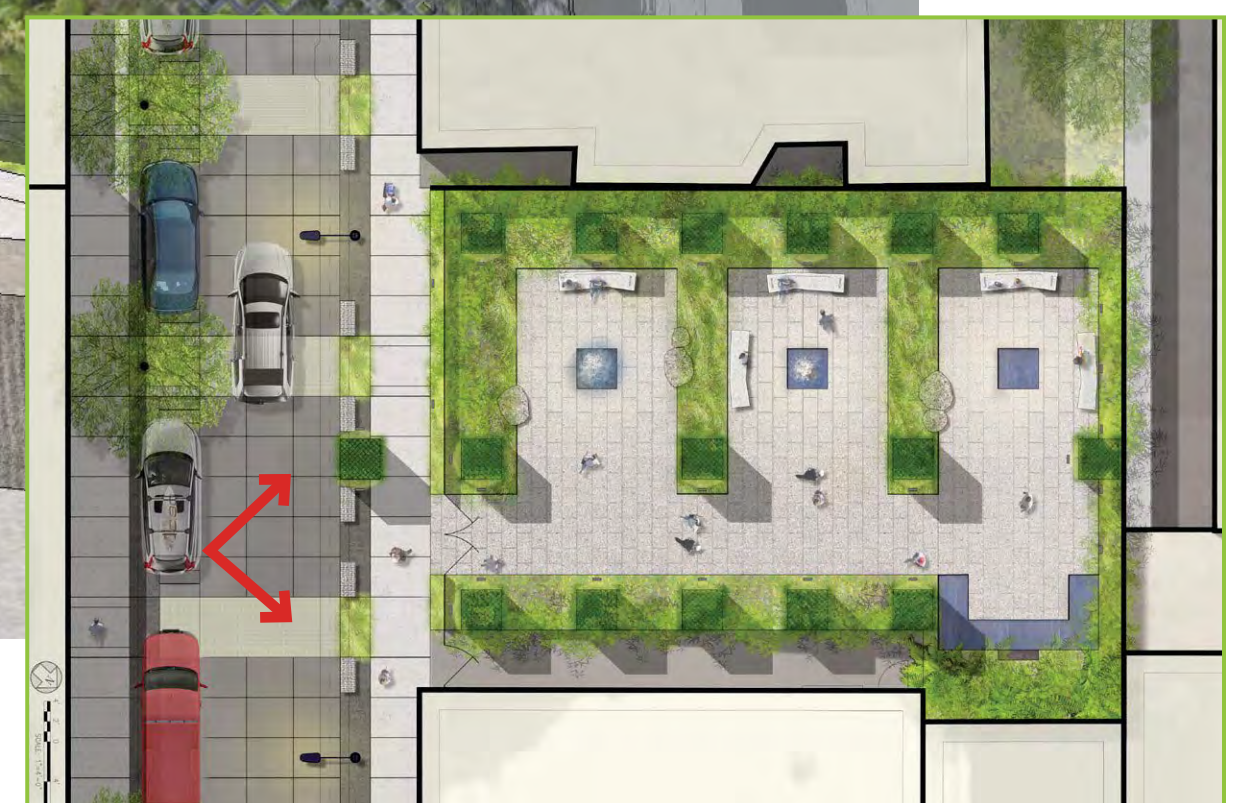
10.0

10.0

0 4' 8' 12'
SCALE: 1"=4'-0"



4' 2' 0' 4' 8'
SCALE: 1"=4'-0"



ENTRY VIEW

GUY PLACE MINI PARK

RINCON HILL, SAN FRANCISCO
AUGUST 2014





AERIAL PERSPECTIVE

GUY PLACE MINI PARK

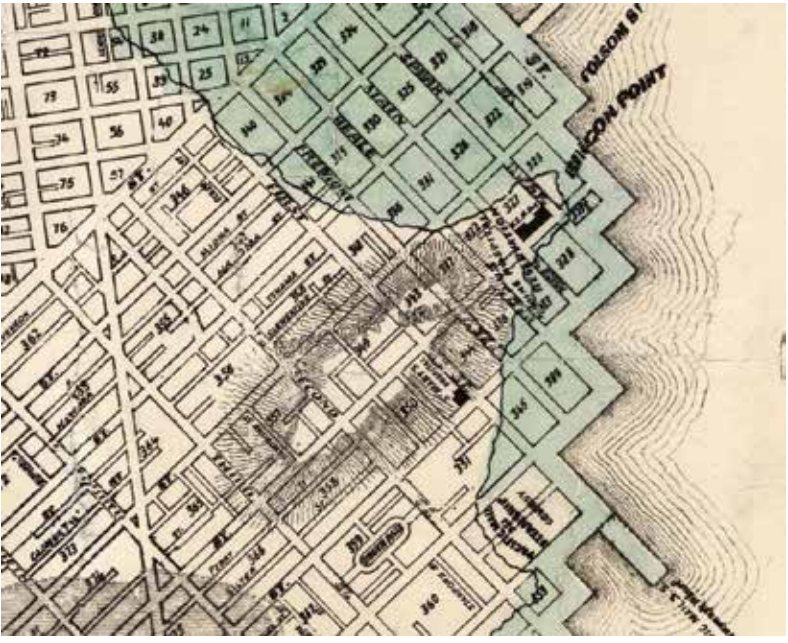
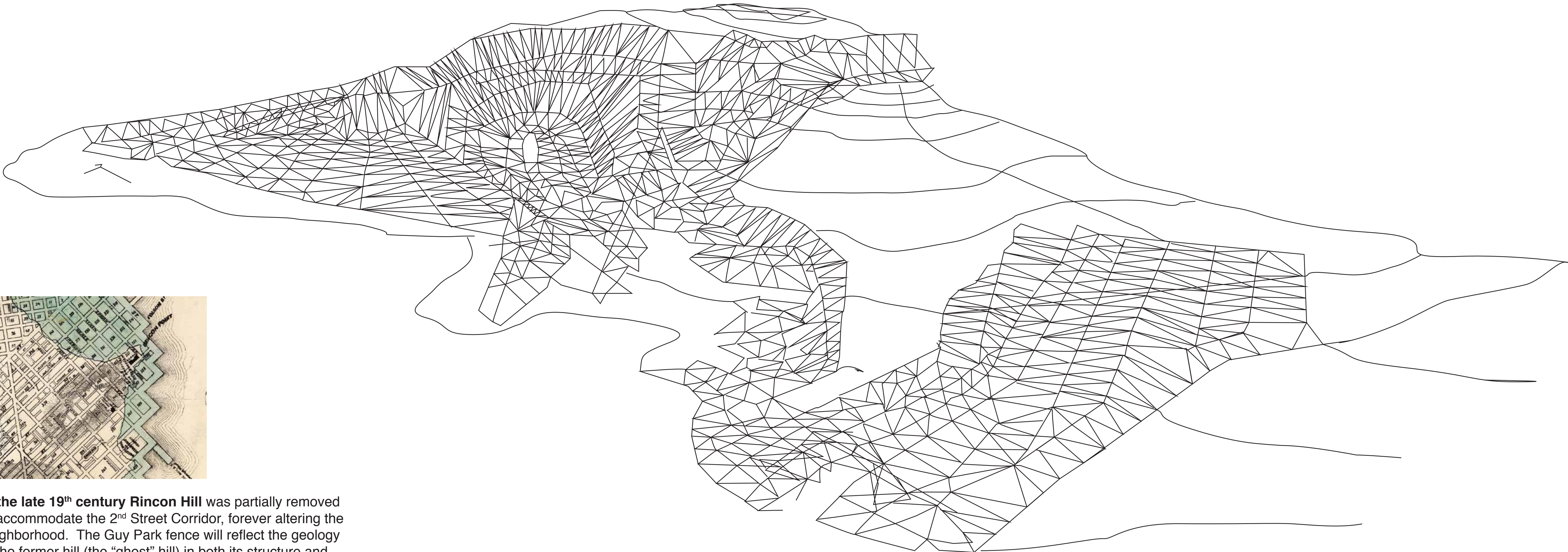
RINCON HILL, SAN FRANCISCO
AUGUST 2014



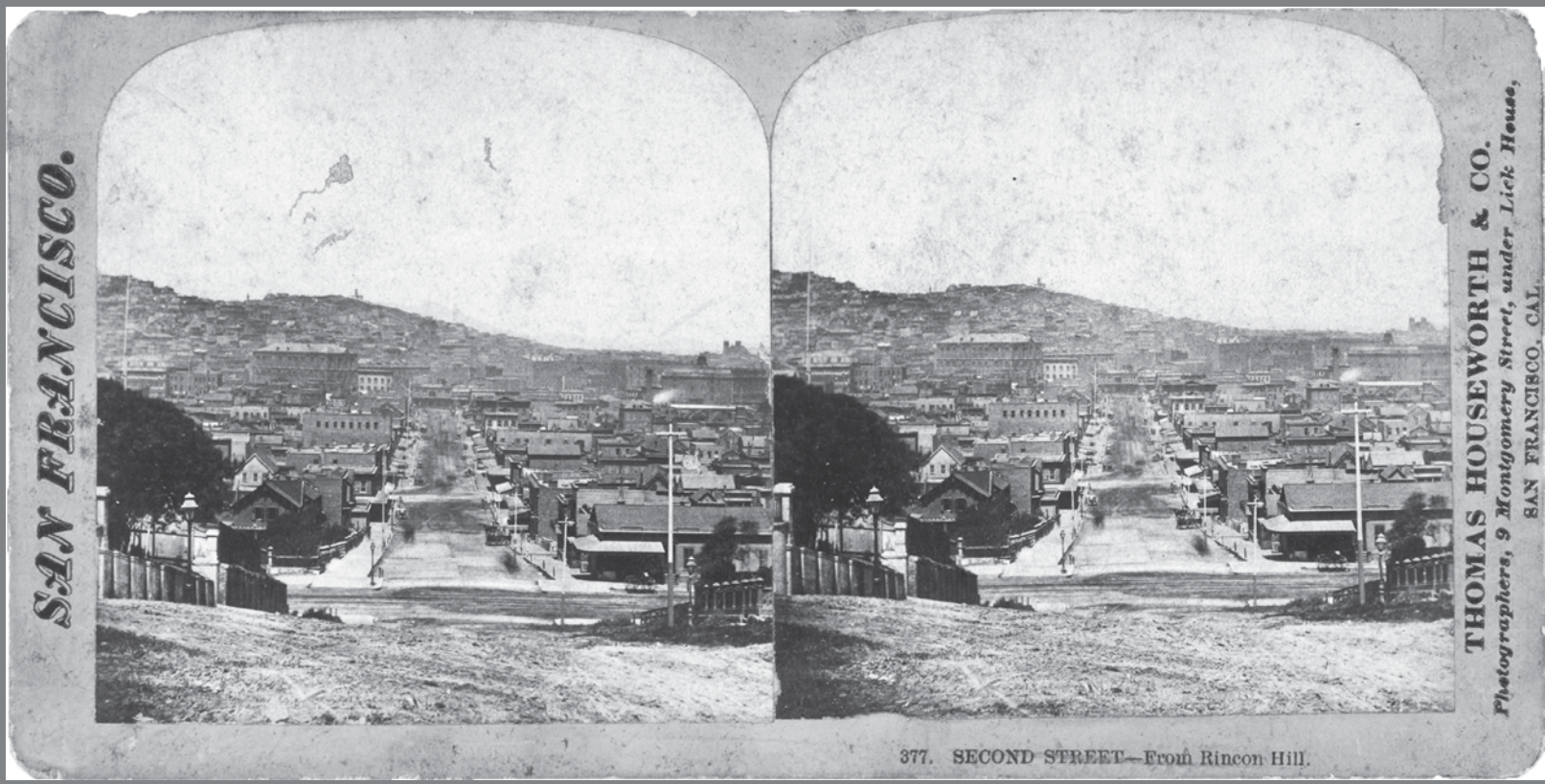
GEOLOGIC GHOST

GUY PLACE MINI PARK

ADRIANE COLBURN



In the late 19th century Rincon Hill was partially removed to accommodate the 2nd Street Corridor, forever altering the neighborhood. The Guy Park fence will reflect the geology of the former hill (the “ghost” hill) in both its structure and through the geologic and geographic imagery on the face of the panels.

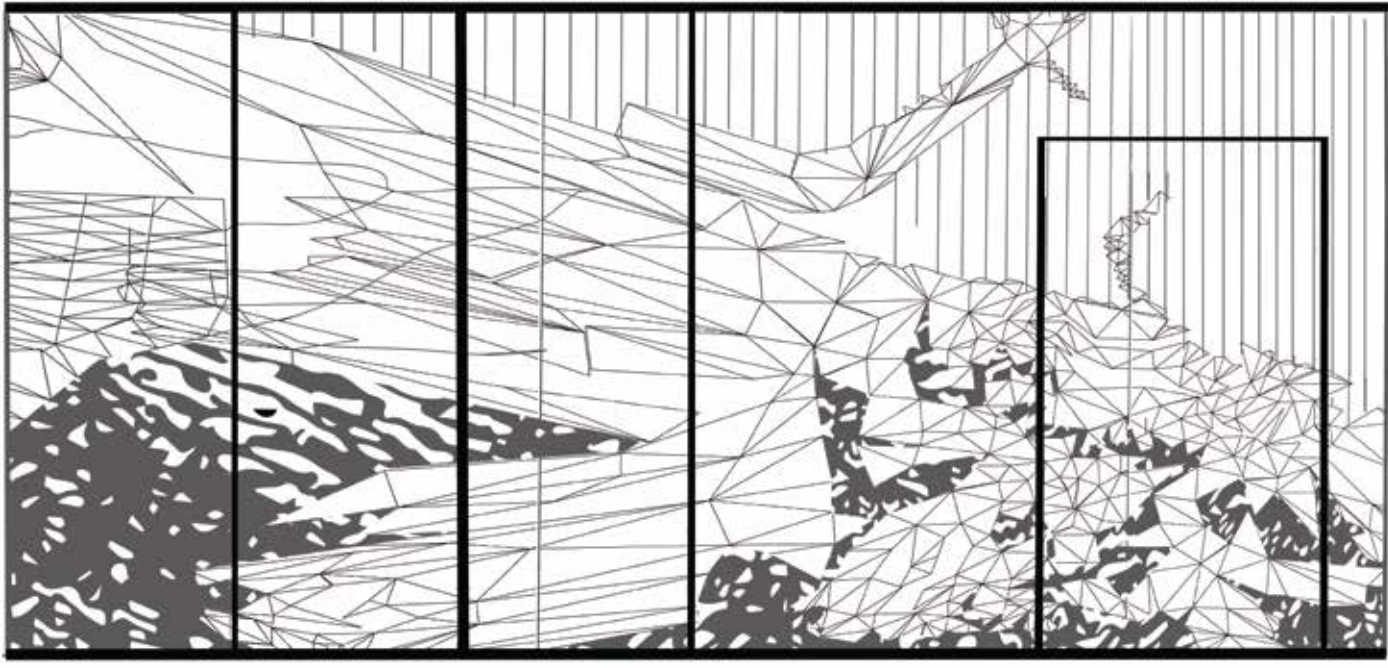


Geologic Ghost fence consists of panels made from waterjet cut steel. The panels will span the 50' street frontage of Guy Place Mini Park and will rise to 8' high. Within this will be two gates- one to access the passageway next to the adjacent building and a double gate that will act at the entryway into the park itself. The artwork will create a dynamic barrier between the park and the street, containing the garden and restricting entry during closed hours while simultaneously inviting the public to engage with the natural environment of Guy Place. Through a dynamic structure and intricate motifs the fence will draw attention to this new green space, illuminating it as a highlight of the neighborhood.

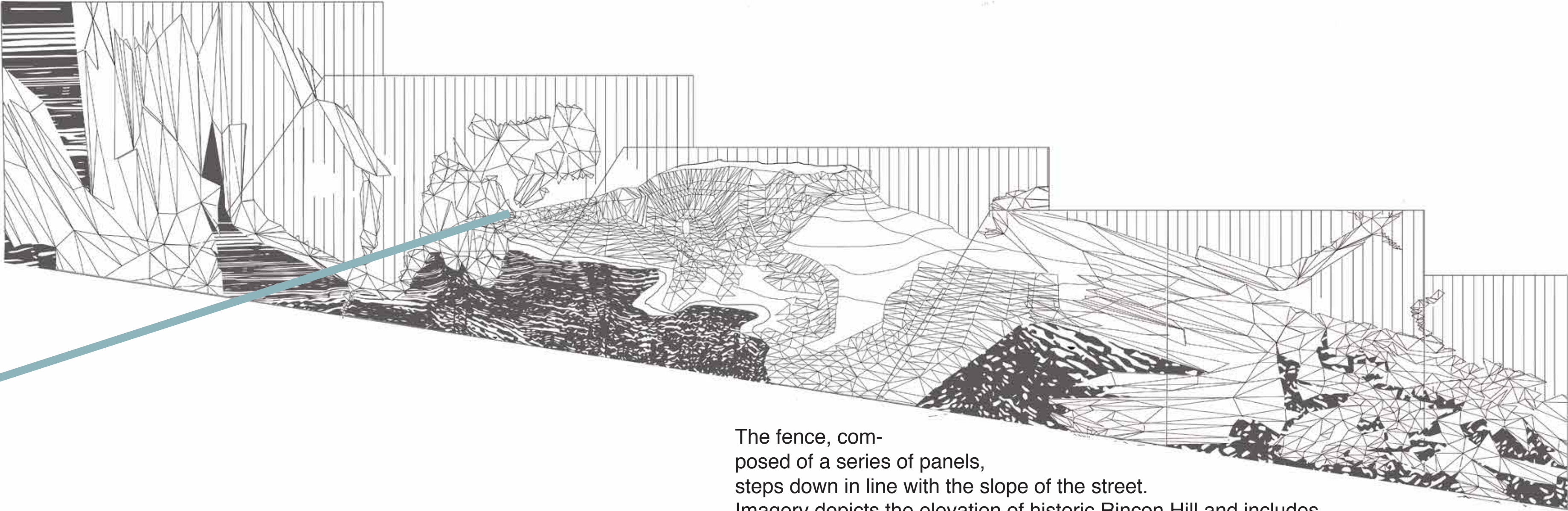
A series of panels that step down along the incline of the street will allow the fence to remain 8' above the sidewalk as the street descends. Its form will suggest a series of hills reminiscent of the city's natural landscape and Rincon Hill's topography.

The fence itself will be comprised of a waterjet cut design inspired by the historic and contemporary geologic record of the neighborhood. These images will be composed from topographic, geologic and triangulated maps, created through a collaboration between the artist and local geologists and cartographers.

The combination of the natural contours of the local landscape with the geometric structures of maps will create meditative and abstract patterns, creating a unique park entryway. In addition, the fence will be visually permeable so that, despite its height and security function, it will remain inviting and open to the neighborhood at large.



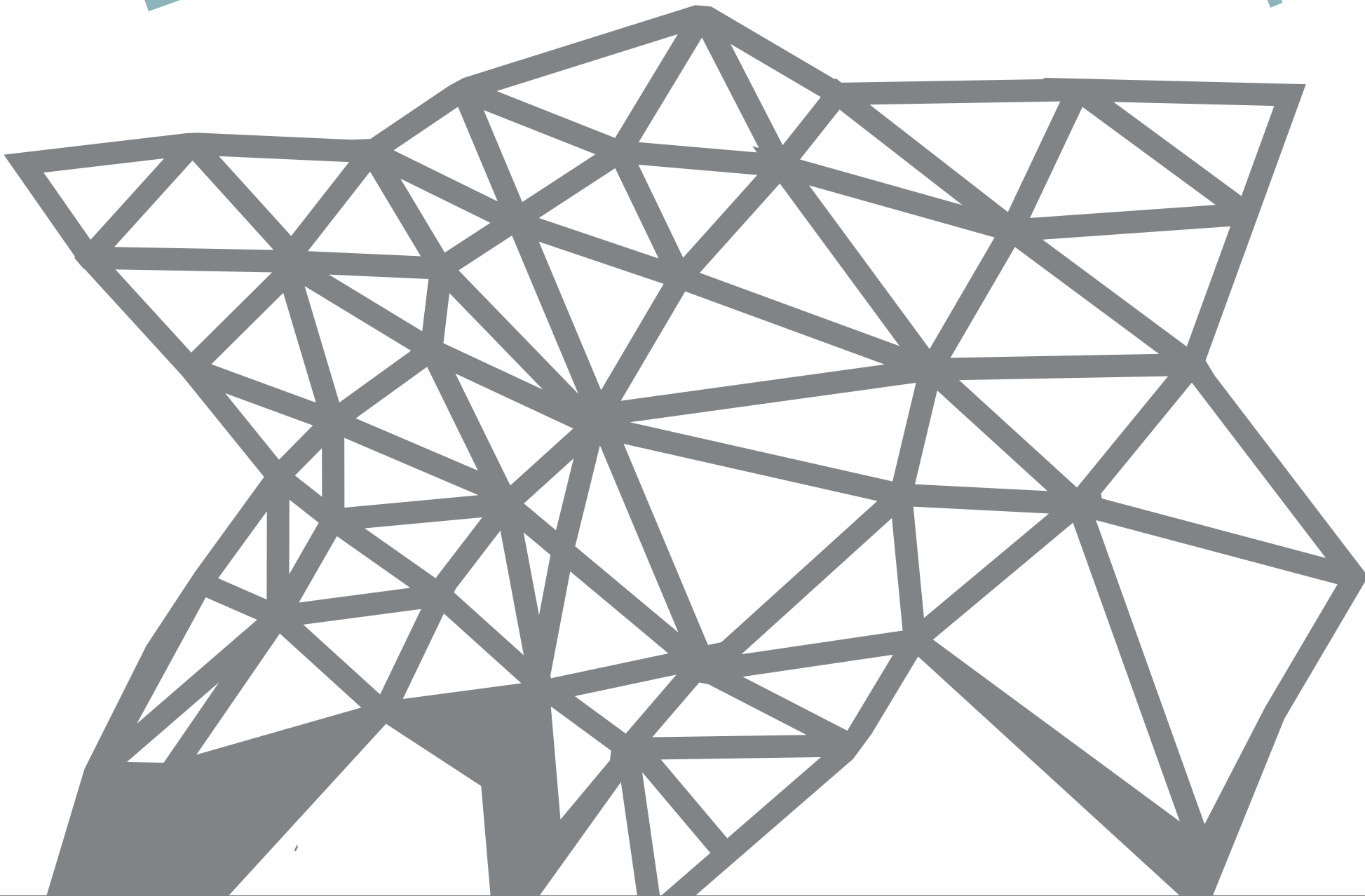
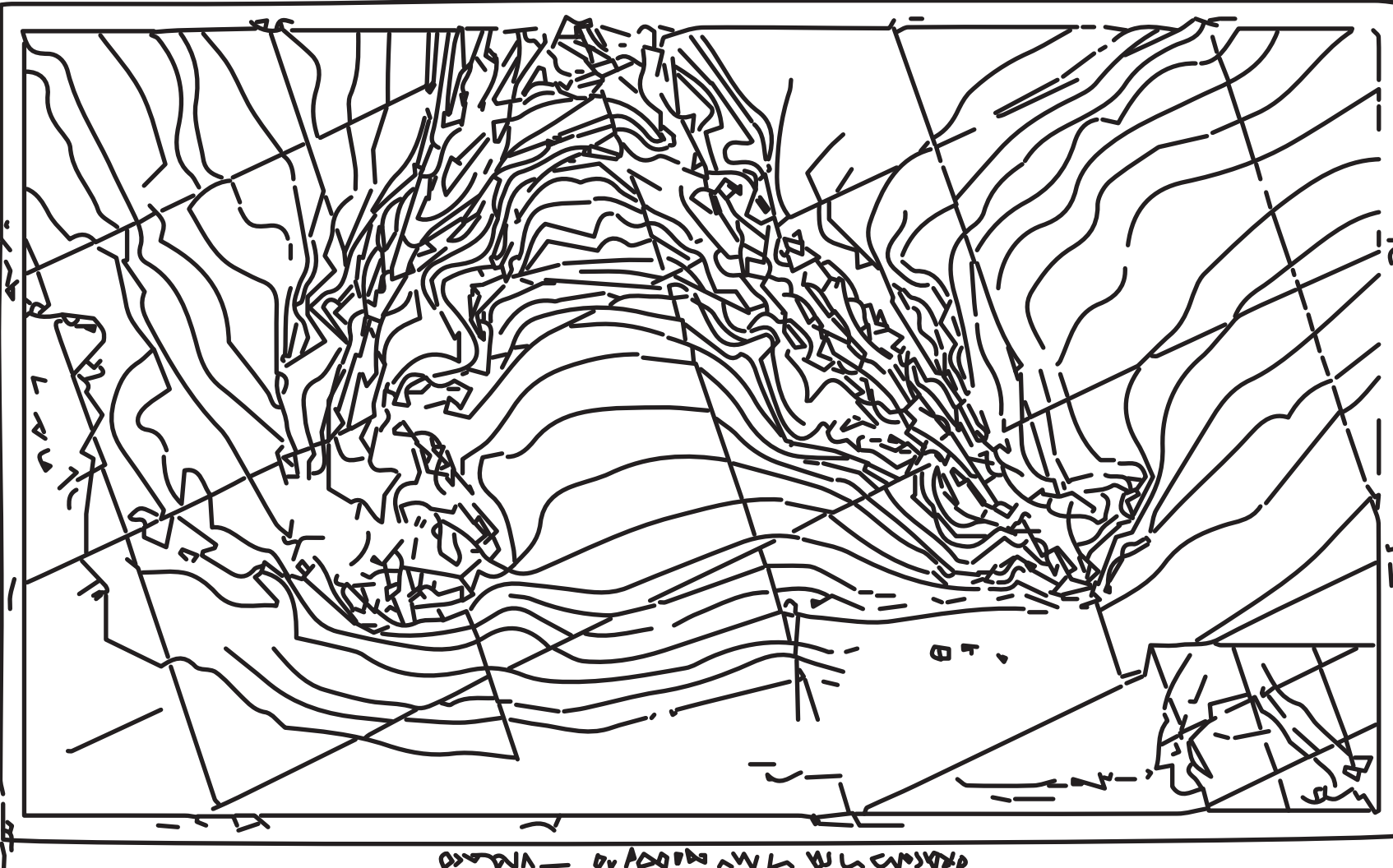
The park entrance gates and door to a side passageway will be subtly integrated into the fence, allowing the pattern to sweep across the entire span of the park front.



Grey areas and lines are solid steel; Whites areas are cut out sections. All cut outs are not to be open in excess of 4 inches.

The fence, composed of a series of panels, steps down in line with the slope of the street. Imagery depicts the elevation of historic Rincon Hill and includes patterns derived from geologic maps and images. The artist will work in collaboration with local geologists and historians.

GEOLOGIC MAPS AND IMAGERY OF RINCON HILL



Revision date: July 13, 2015

