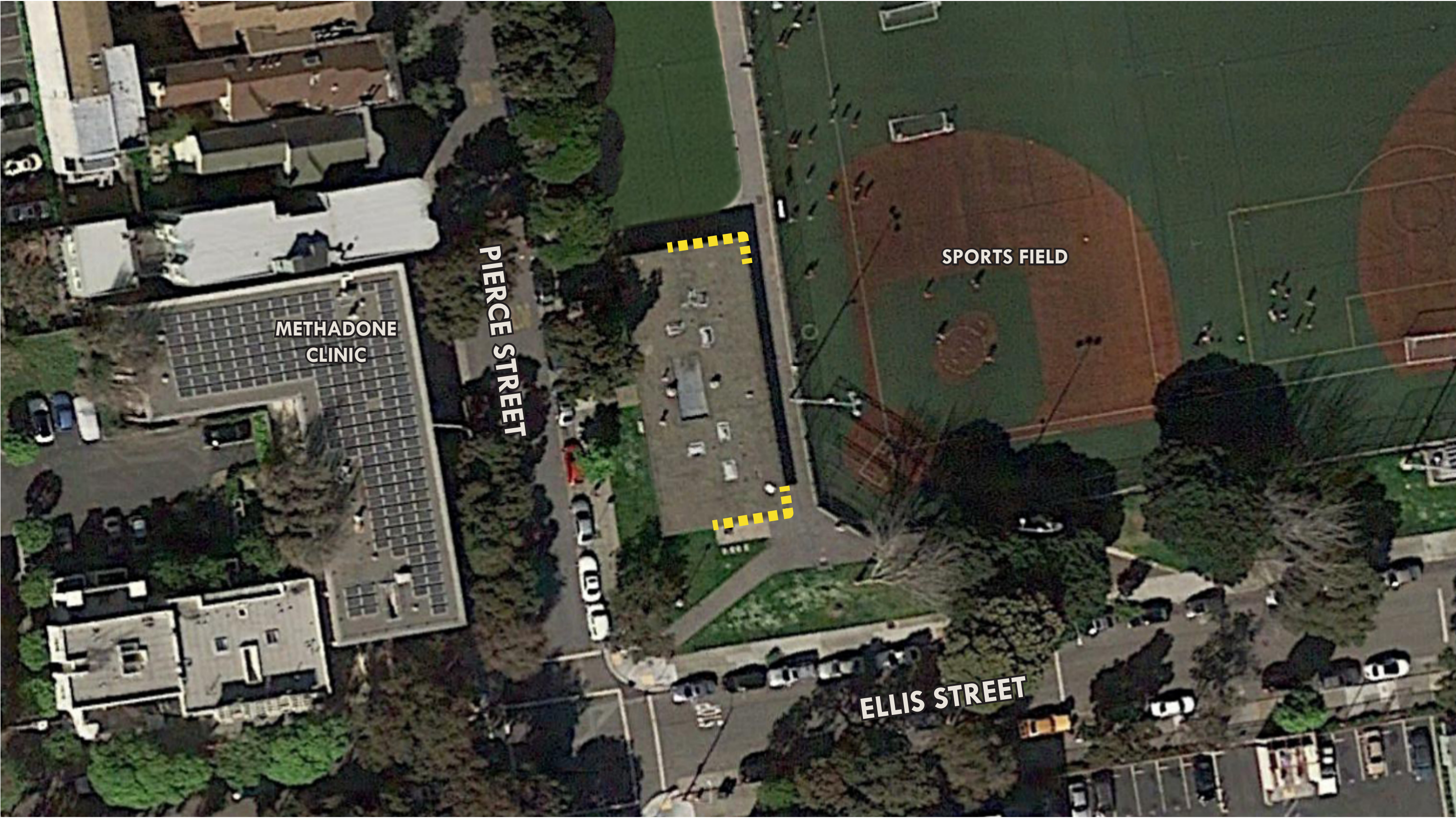


RECREATION AND PARKS | KIMBELL CLUBHOUSE GATES

CIVIC DESIGN REVIEW PHASE I/II/III
PRESENTATION PACKAGE FOR MAY 18TH, 2015



SITE AND CONTEXT



EXISTING CONDITIONS



The community response to the clubhouse renovation has been favorable but they have requested gates for the following reasons:

- Overhang space has provided unintended shelter for vagrants
- Safety concerns due to the proximity of the methadone clinic across the street
- Additional security for community spaces within the building

OPERABLE PORTIONS



OPEN (DURING DAY)



CLOSED (AT NIGHT)



SECURED PORTION - DOES NOT MOVE

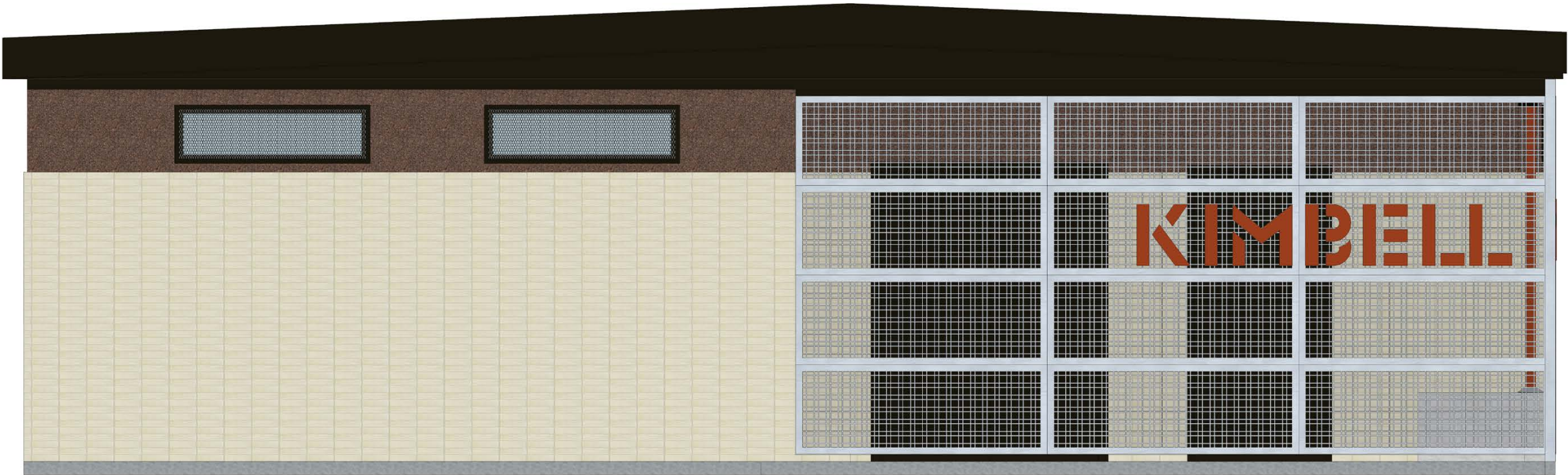


MOVABLE PORTION - SLIDES ON TRACK TO OPEN DURING THE DAY AND LOCK AT NIGHT

ELEVATIONS



SOUTH GATE ELEVATION OPEN

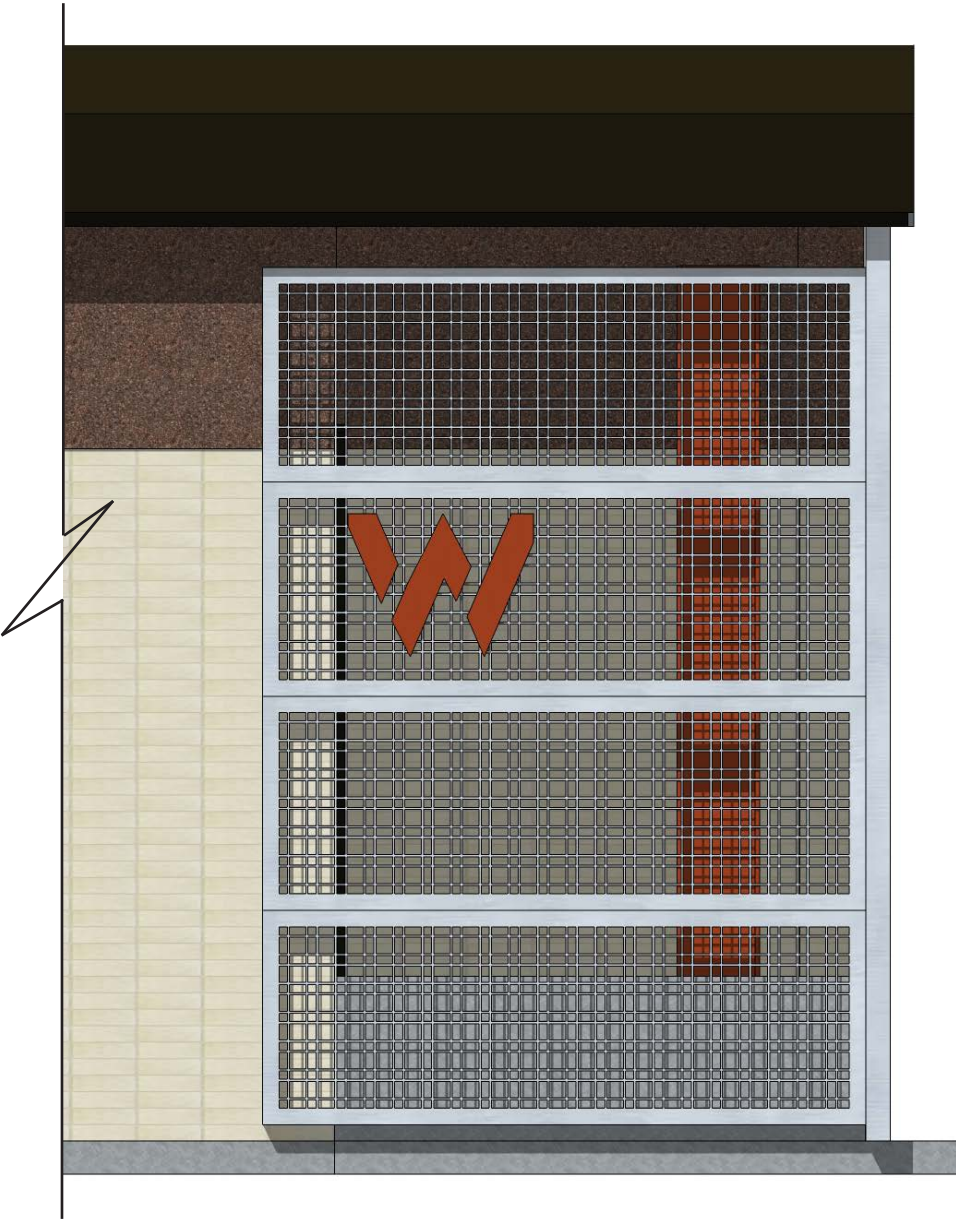
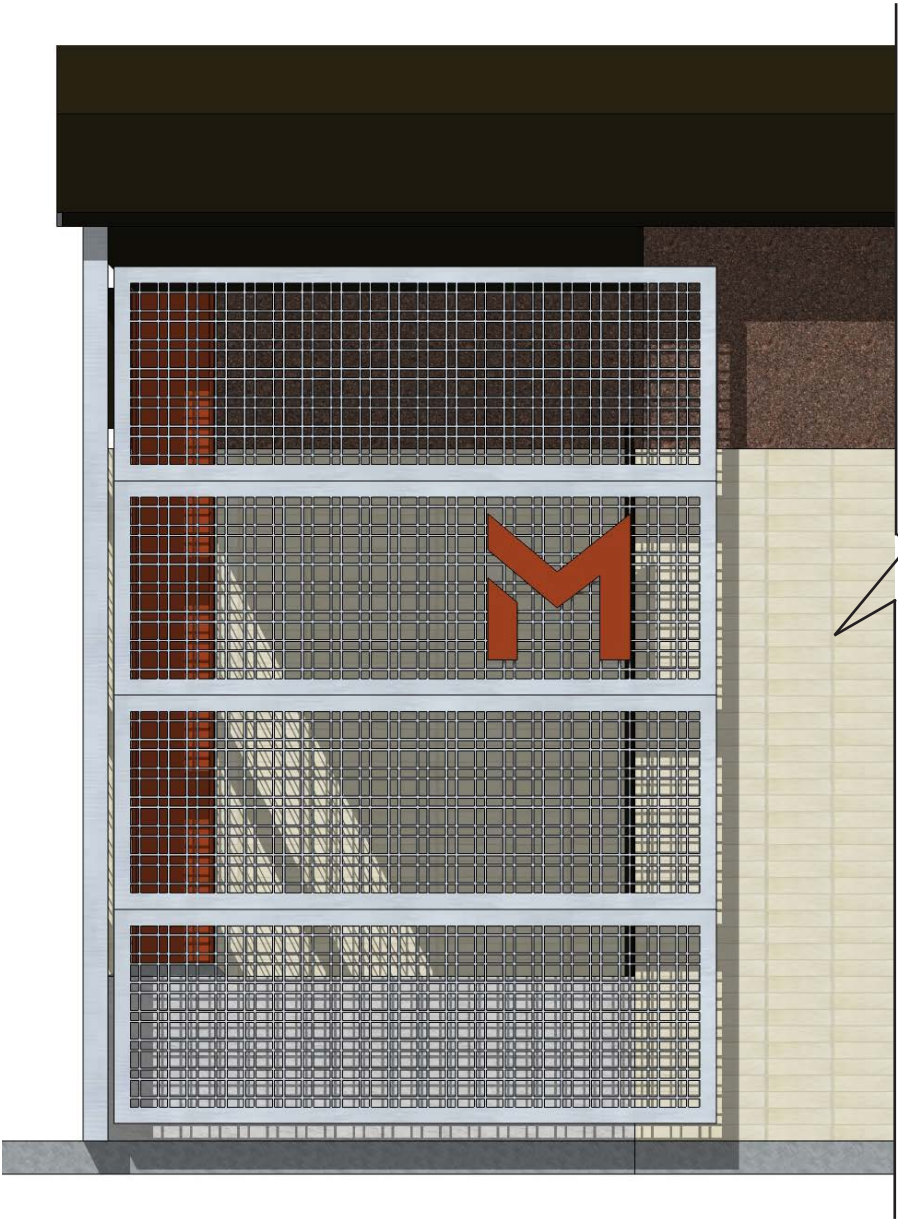


SOUTH GATE ELEVATION CLOSED

ELEVATIONS



M and W indicate Mens and Womens restrooms and are designed to be seen from the sports fields.



PERSPECTIVE (CLOSED)



