

# SAN FRANCISCO RECREATION + PARK DEPARTMENT MARGARET HAYWARD PLAYGROUND

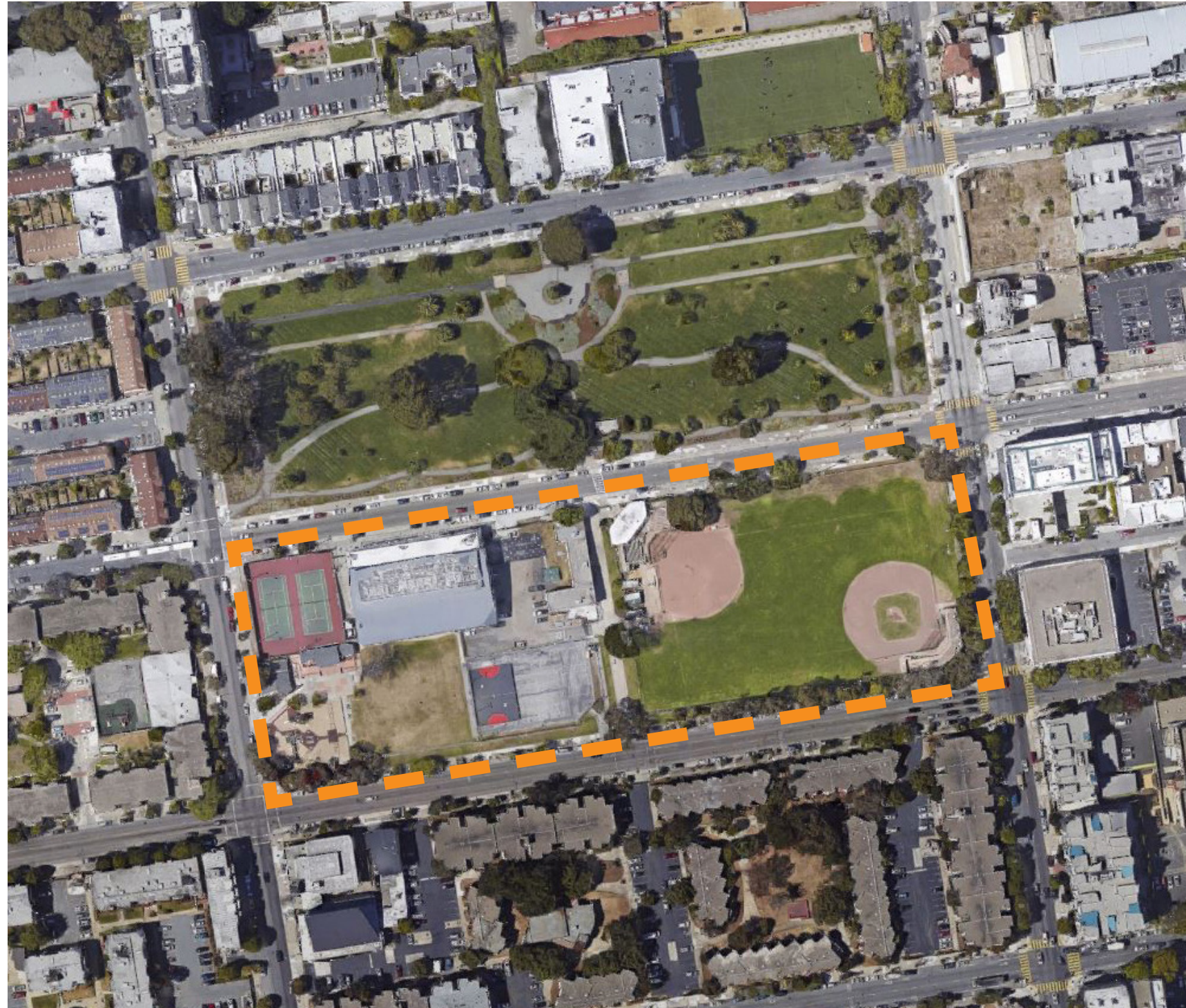
CIVIC DESIGN REVIEW: INFORMATIONAL  
June, 2016



**Supervisor**  
London Breed  
*District 5*

**Project Managers**  
Jake Gilchrist  
Marien Coss  
*Recreation and Park Department*

**Design Team**  
Lizzy Hirsch, Landscape Architect  
Gabriel Meil, Design Associate  
Paul De Freitas, Architect  
Mayton Xu, Intern  
*San Francisco Public Works*





## PROJECT PURPOSE

Margaret Hayward Playground is comprised of two city blocks in the Western Addition Neighborhood and bound by Turk, Golden Gate, Gough, and Laguna. It offers a variety of recreational programs including sports courts; playfields with bleachers; children's play area; indoor recreation space, storage and related amenities; RPD maintenance office space and storage; several RPD leased properties; and a city operations facility owned and operated by the Department of Emergency Management.

The intent of this 2012 Clean and Safe Neighborhood Parks Bond project is to consolidate park structures including recreation buildings, storage and restrooms; improve park access; replace sports courts, playfields, children's play area and related amenities.

## PRIMARY PROJECT GOALS

- Create a unified, beautiful, and safe park.
- Activate the park by providing an integrated and connected park: remove barriers, improve circulation, and relocate activities and services as needed.
- Increase outdoor space by expanding the landscape and removing or consolidating structures.
- Provide a park that encourages the use of the playground by neighborhood families and residents.
- Balance the uses of Margaret Hayward playground with the uses of Jefferson Square Park.

## COMMUNITY OUTREACH

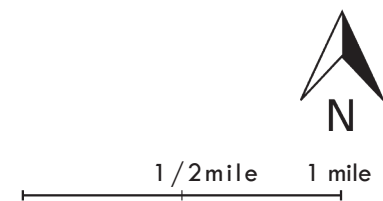
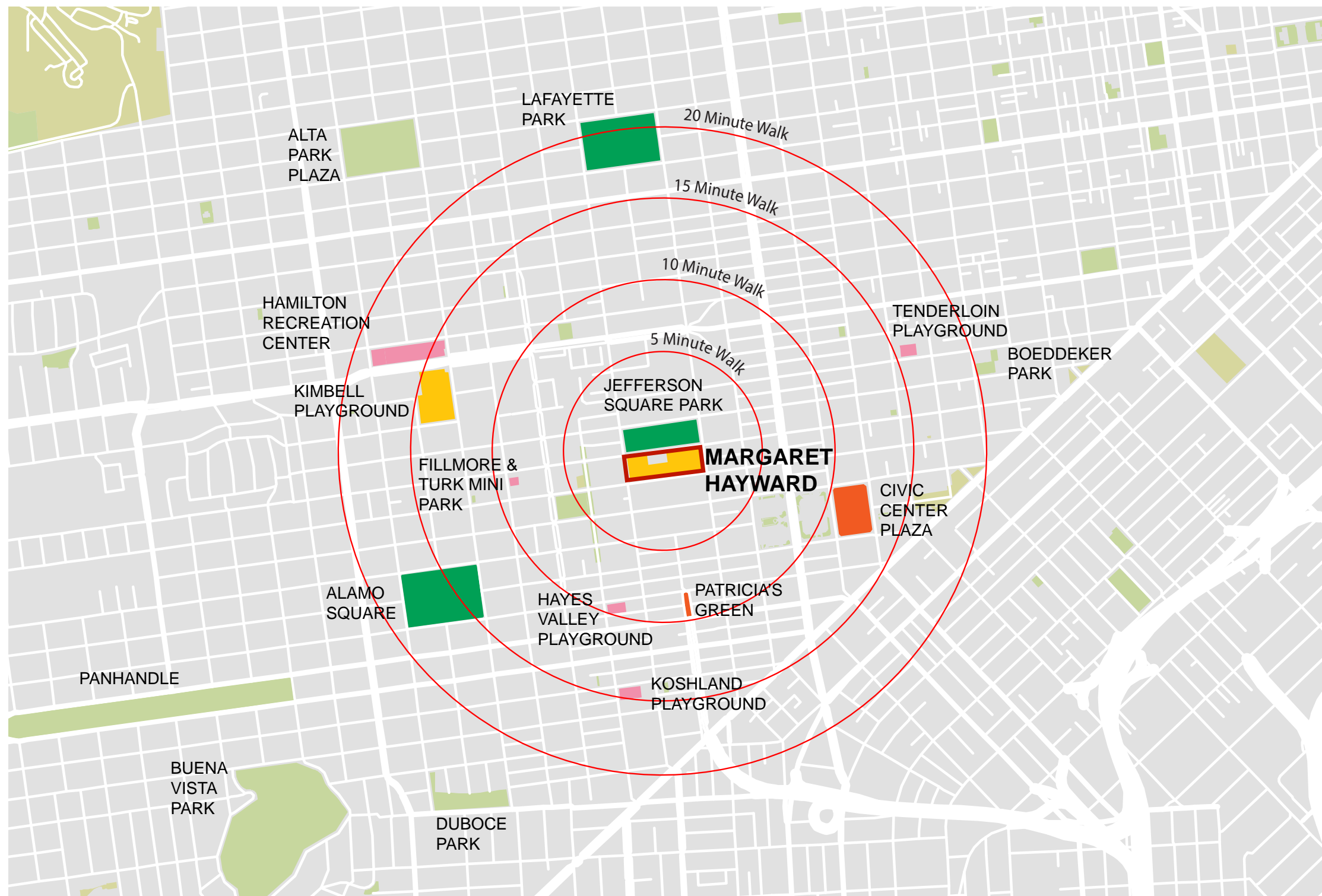
- Monthly and bi-monthly meetings with key neighborhood stakeholders
- 3 public meetings to develop conceptual design direction

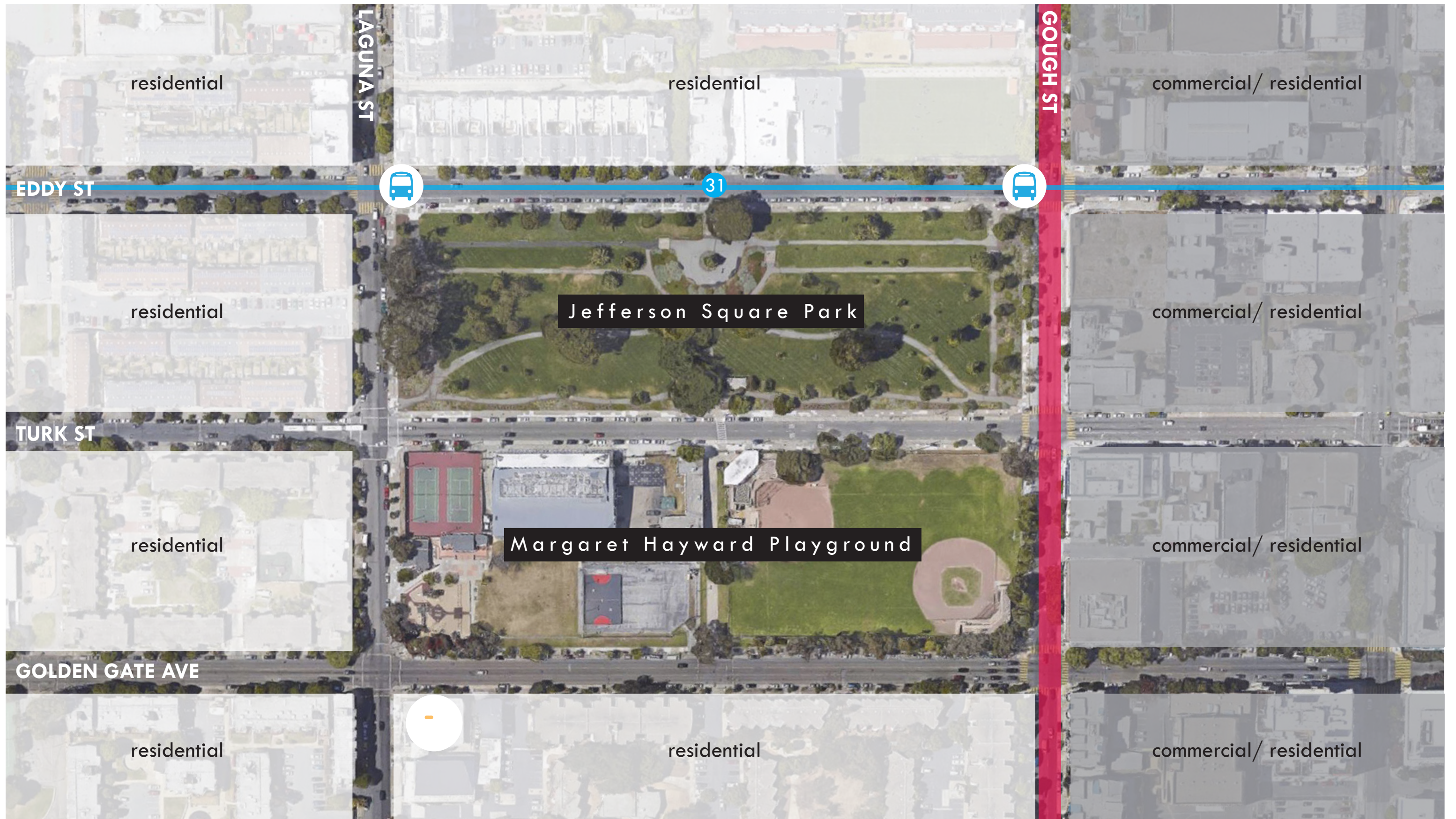
# PART I

---

## Site Context











Public Restroom/  
Clubhouse:  
ADA ramp is  
awkward; Lacks  
picnic/ gathering  
spaces; Requires  
sewer repair.



Tennis courts  
very popular;  
in good  
condition.



Dept. of  
Emergency  
Management



Playground  
at busy  
corner,  
outdated.



Multipurpose  
lawn is  
underutilized  
and in poor  
condition.



Sports courts  
are isolated.

Deteriorating Buildings:  
(WACTC) Western Addition Computer Technology Center, Rec + Park Operations Facility.



Deteriorating Buildings:  
Fieldhouse & Storage.



Overlap of outfields causes play interference; no ADA access to majority of field.



Driveway separates park into two halves and conflicts with pedestrian use.



Uninviting South East entrance and deteriorating bleachers.

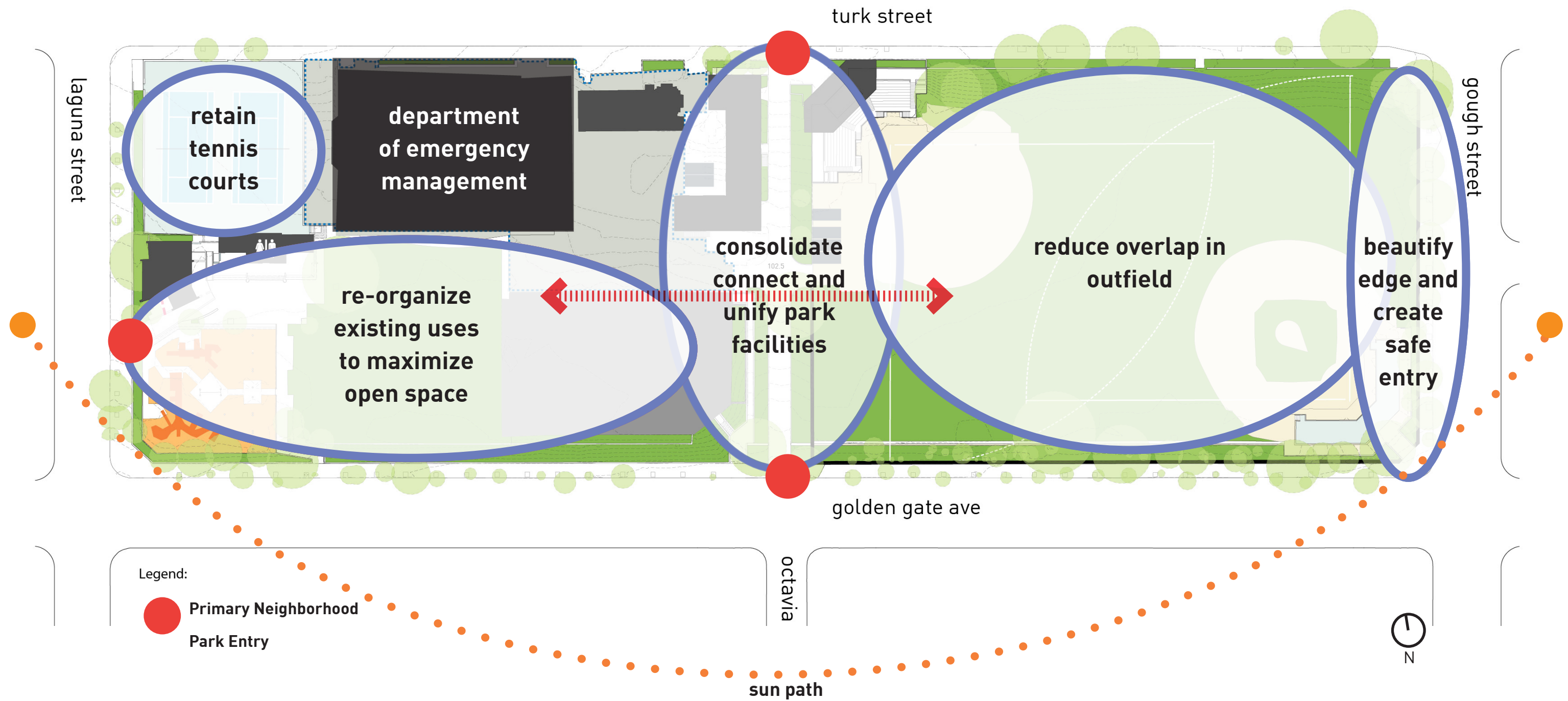
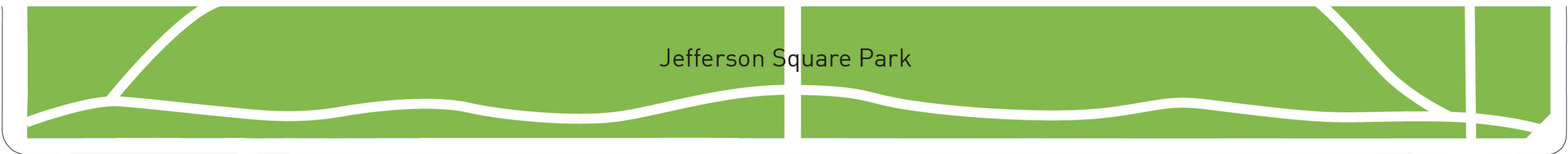


# PART II

---

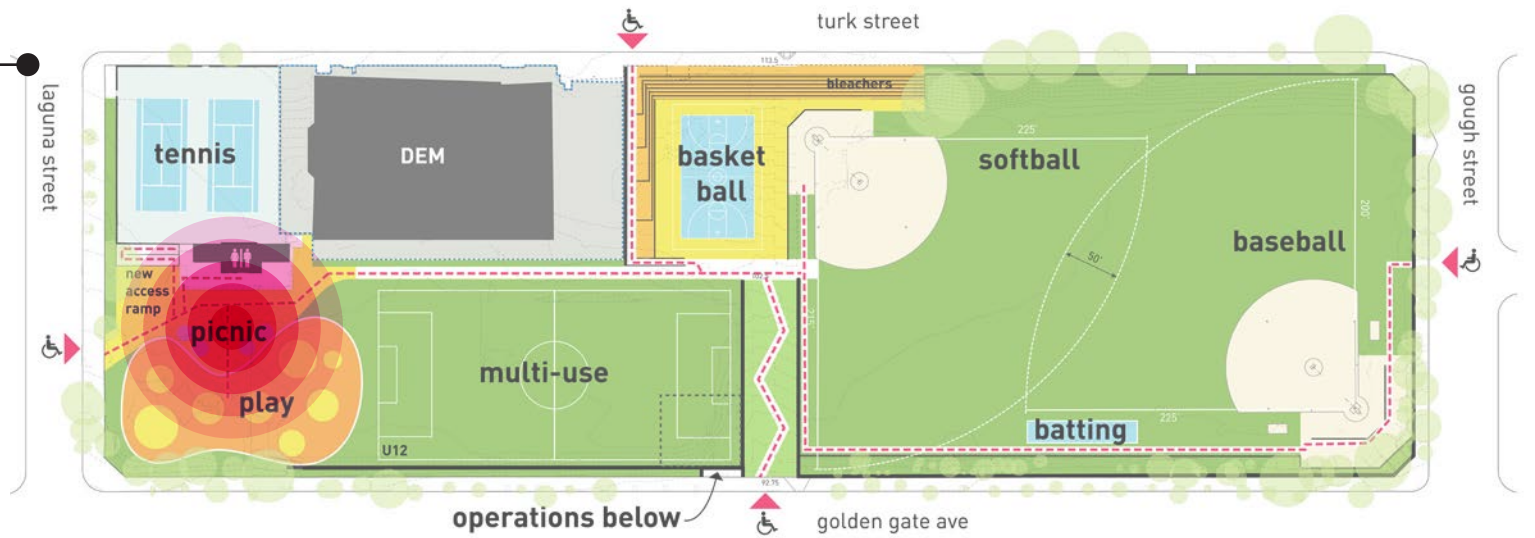
## Site Planning





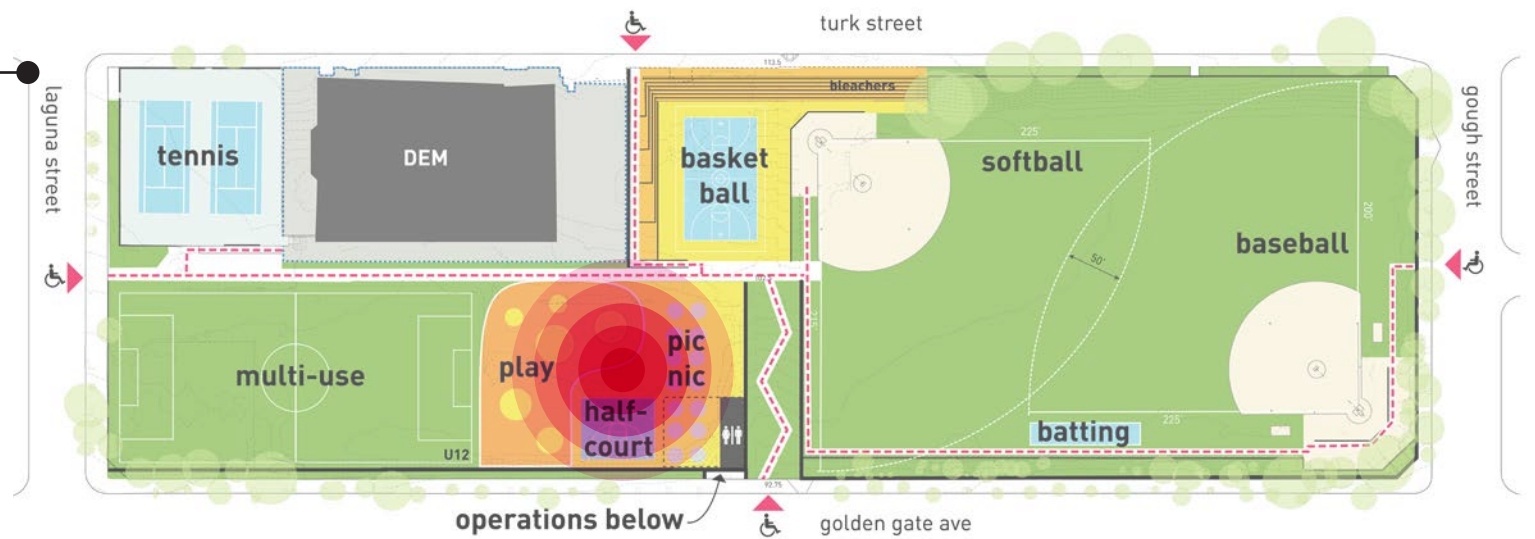
## SCHEME A

- Hub (playground + restroom + picnic) at edge.
- There aren't enough basketball courts.
- Retains community building & space.



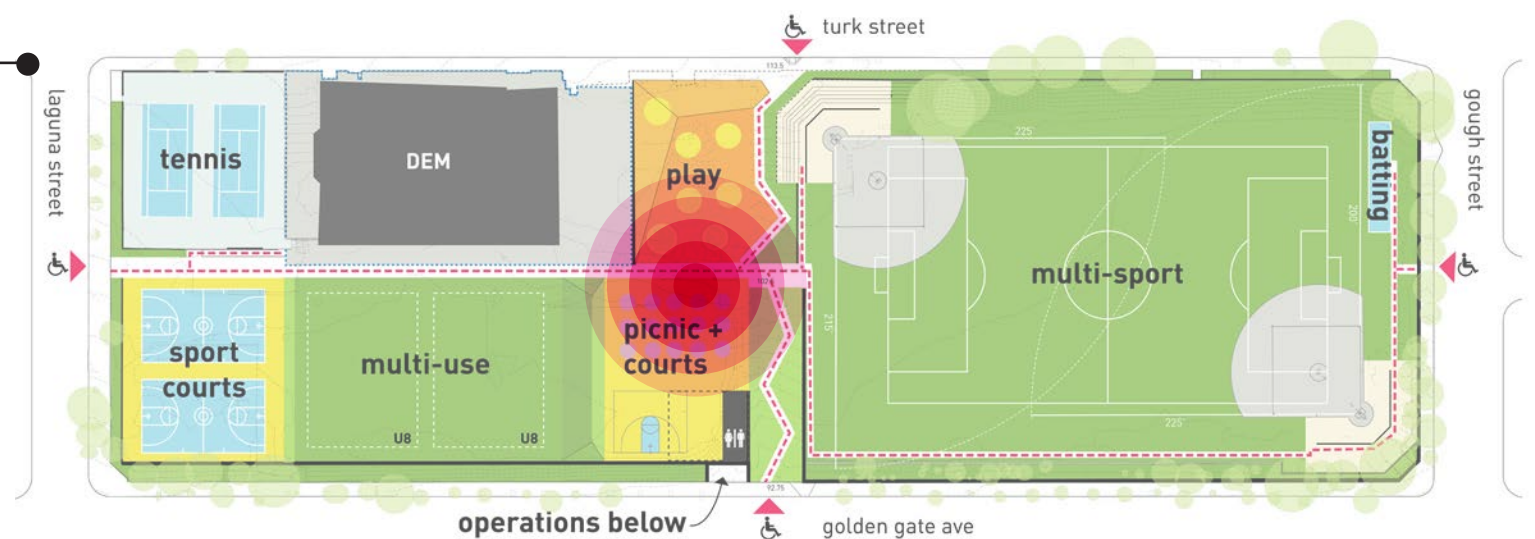
## SCHEME B

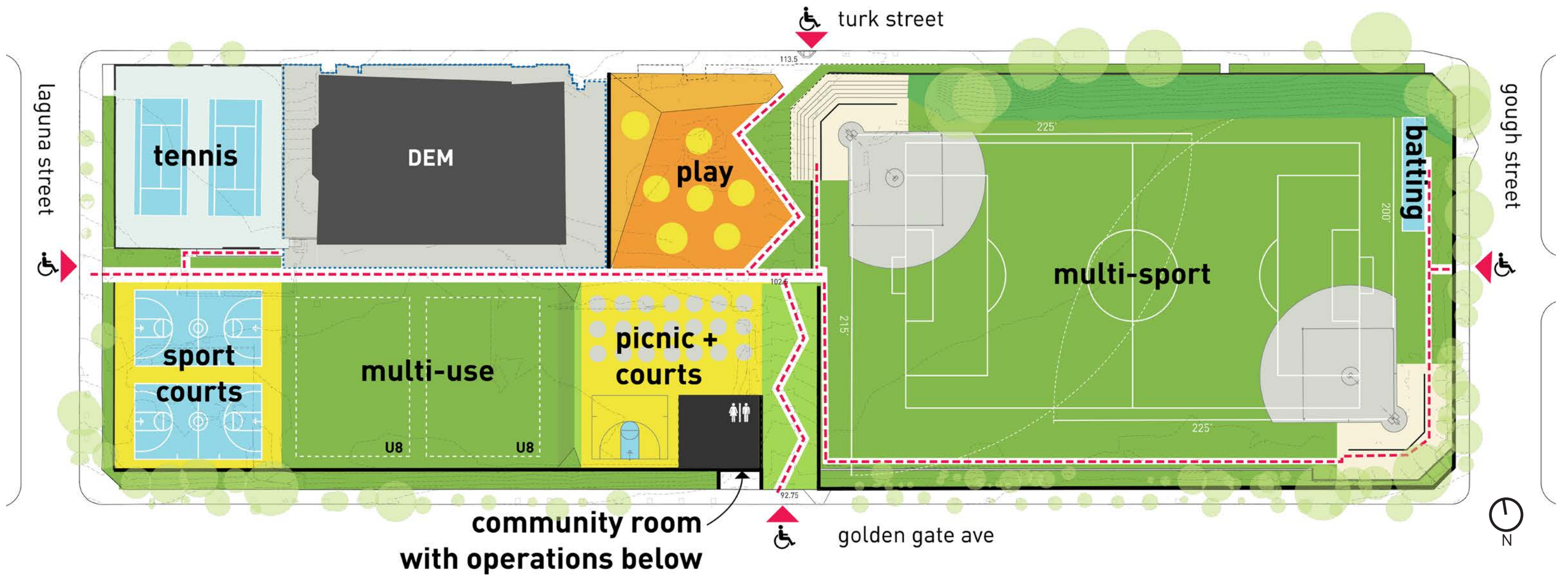
- Hub centrally located a plus!
- There isn't enough basketball.
- No community room.



## SCHEME C - community approved

- Hub centrally located a plus!
- Playground with elevation change seems more interesting!
- Basketball at corner activates park!
- More basketball courts!
- No community room.



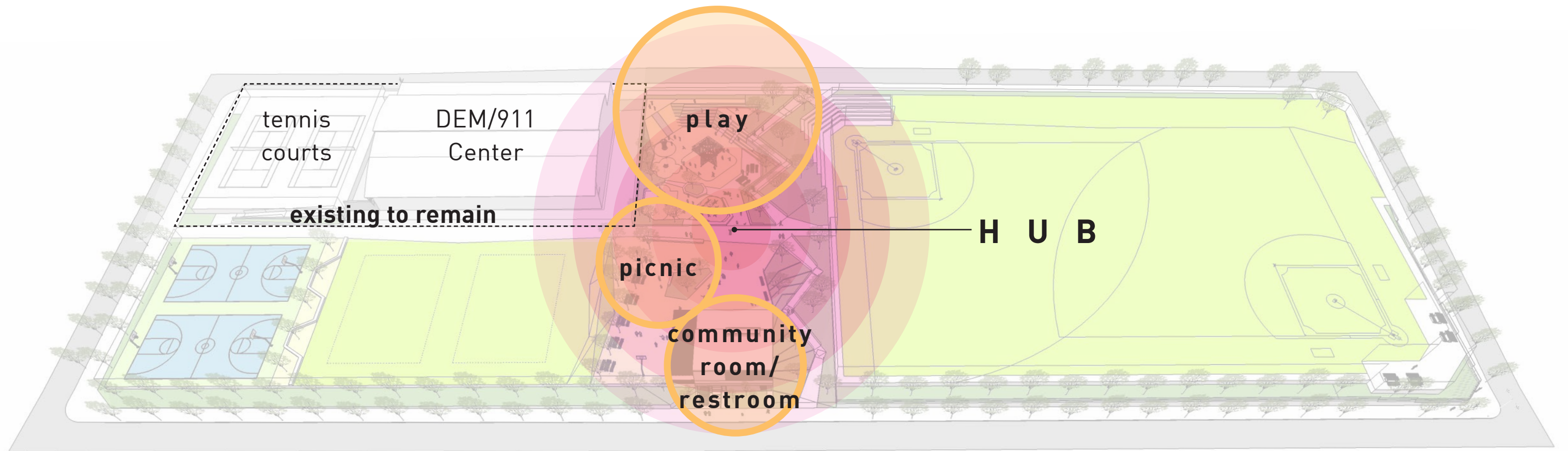


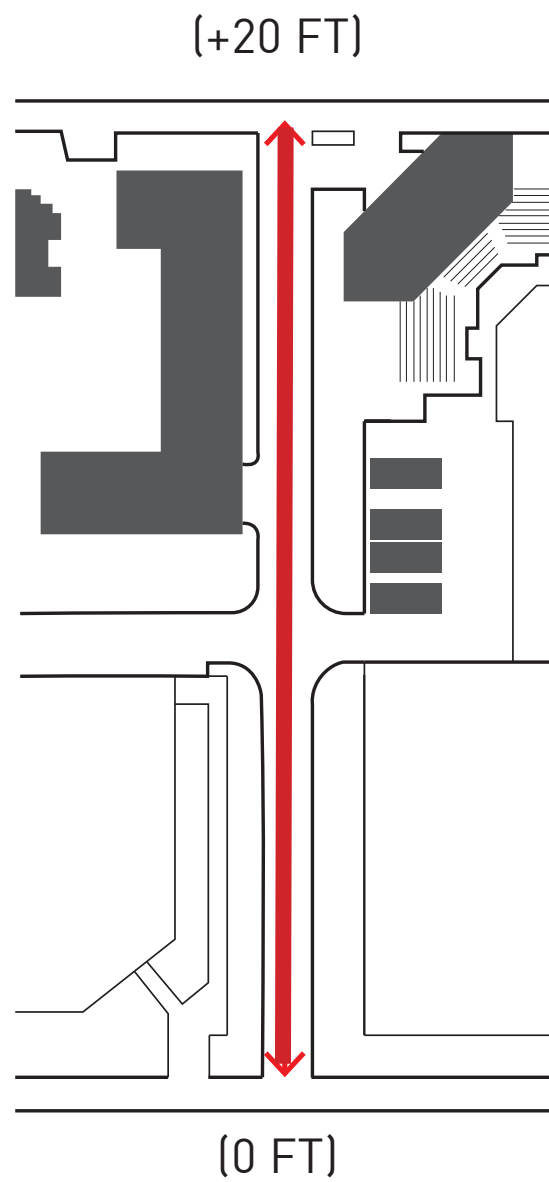
# PART III

---

## Conceptual Design Development



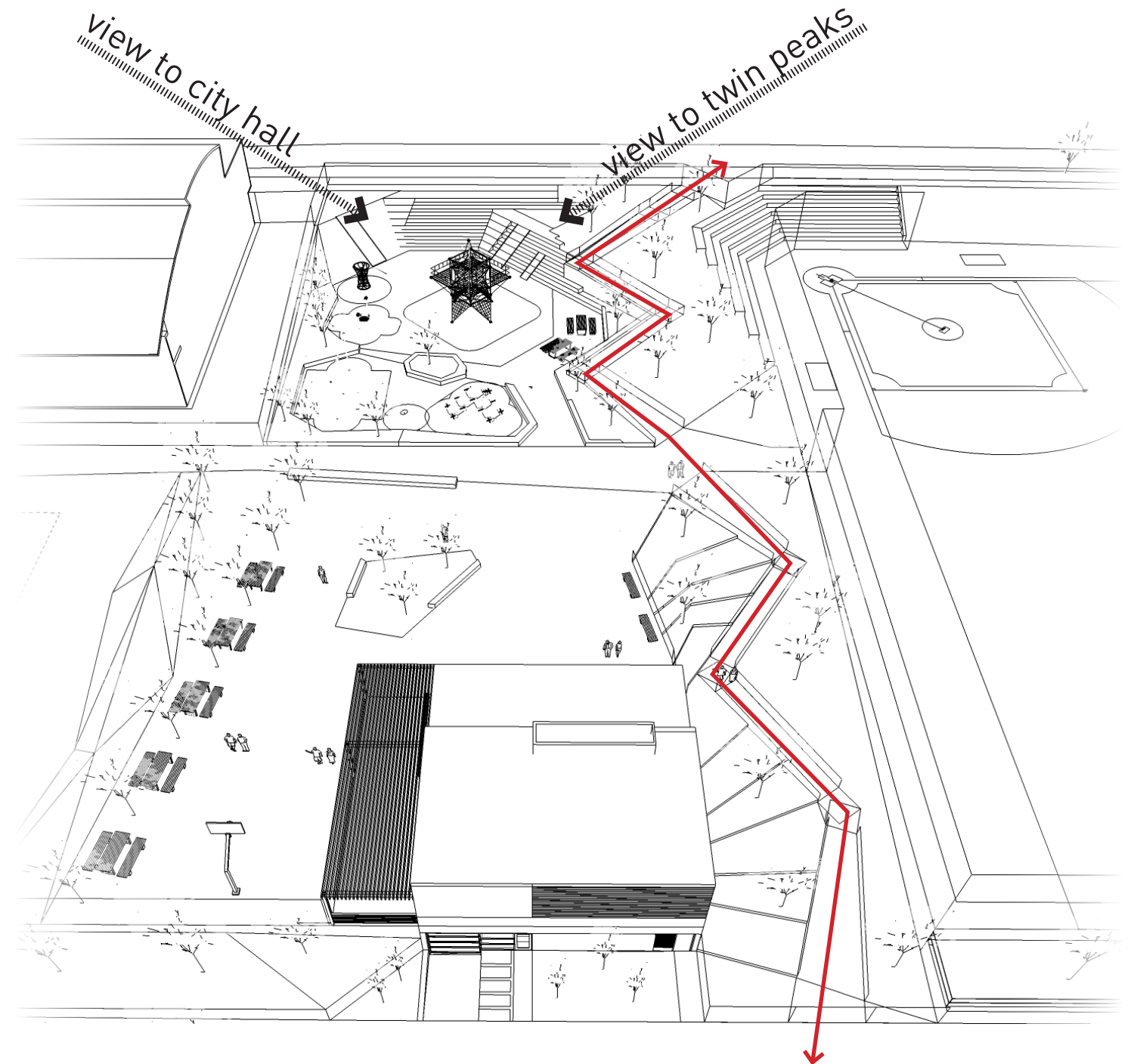




EXISTING



INSPIRATION



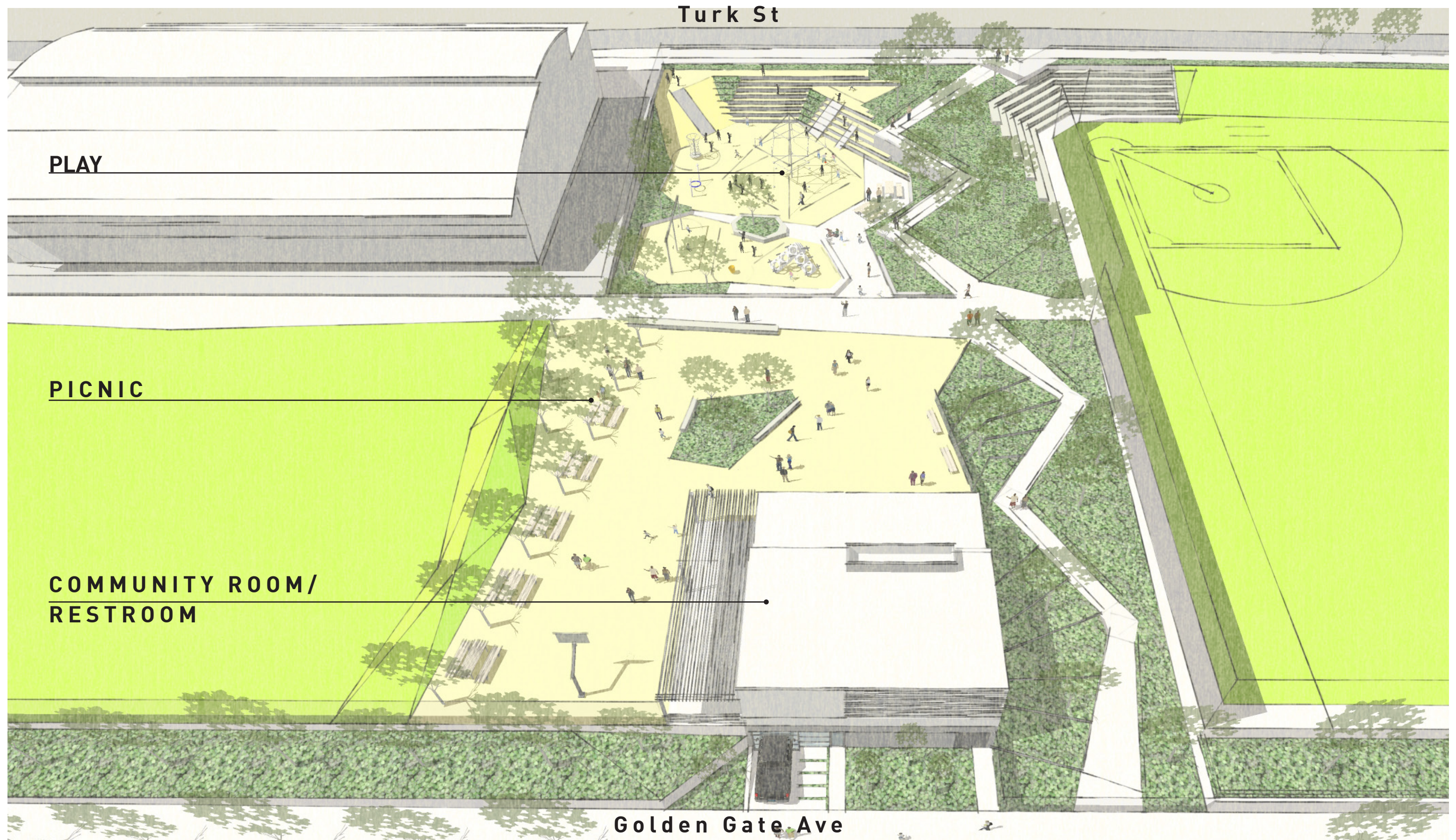
PROPOSED

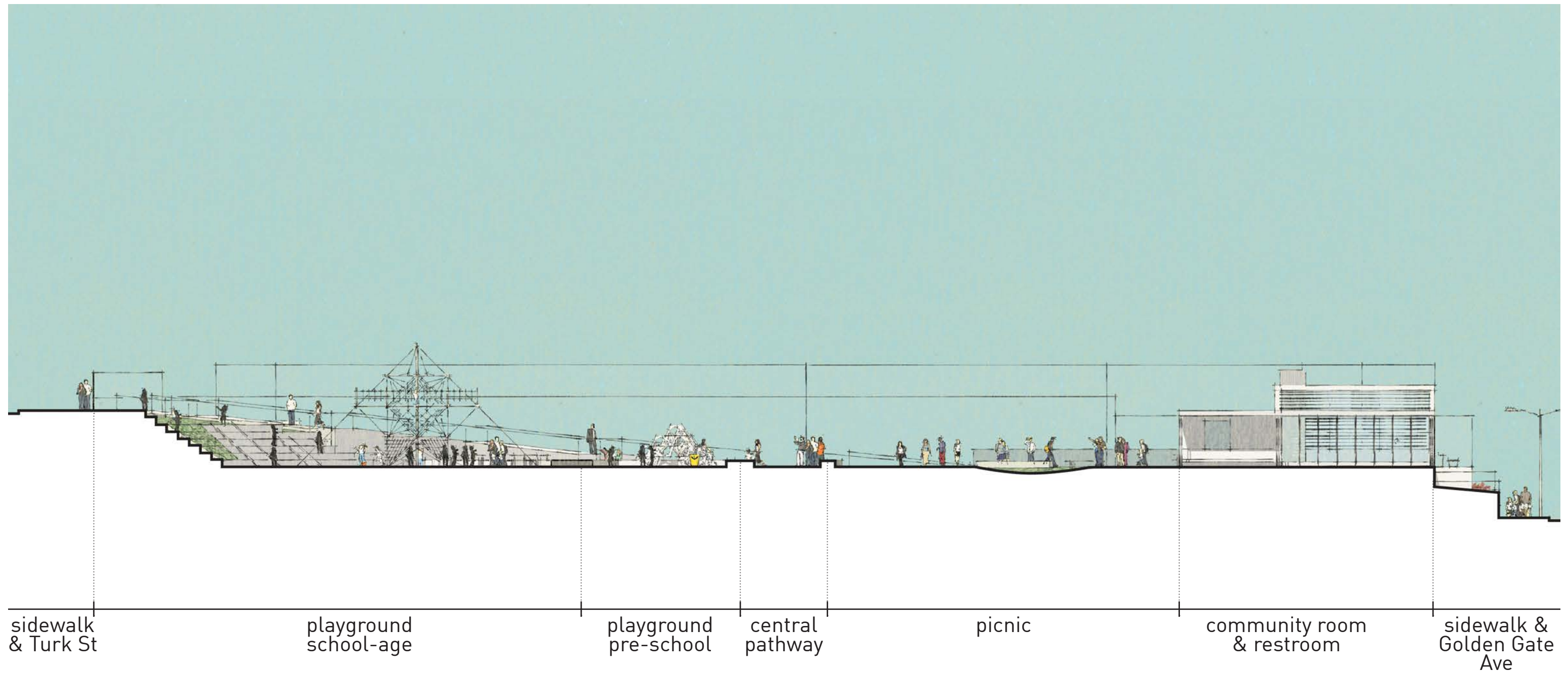


Building Design & Construction

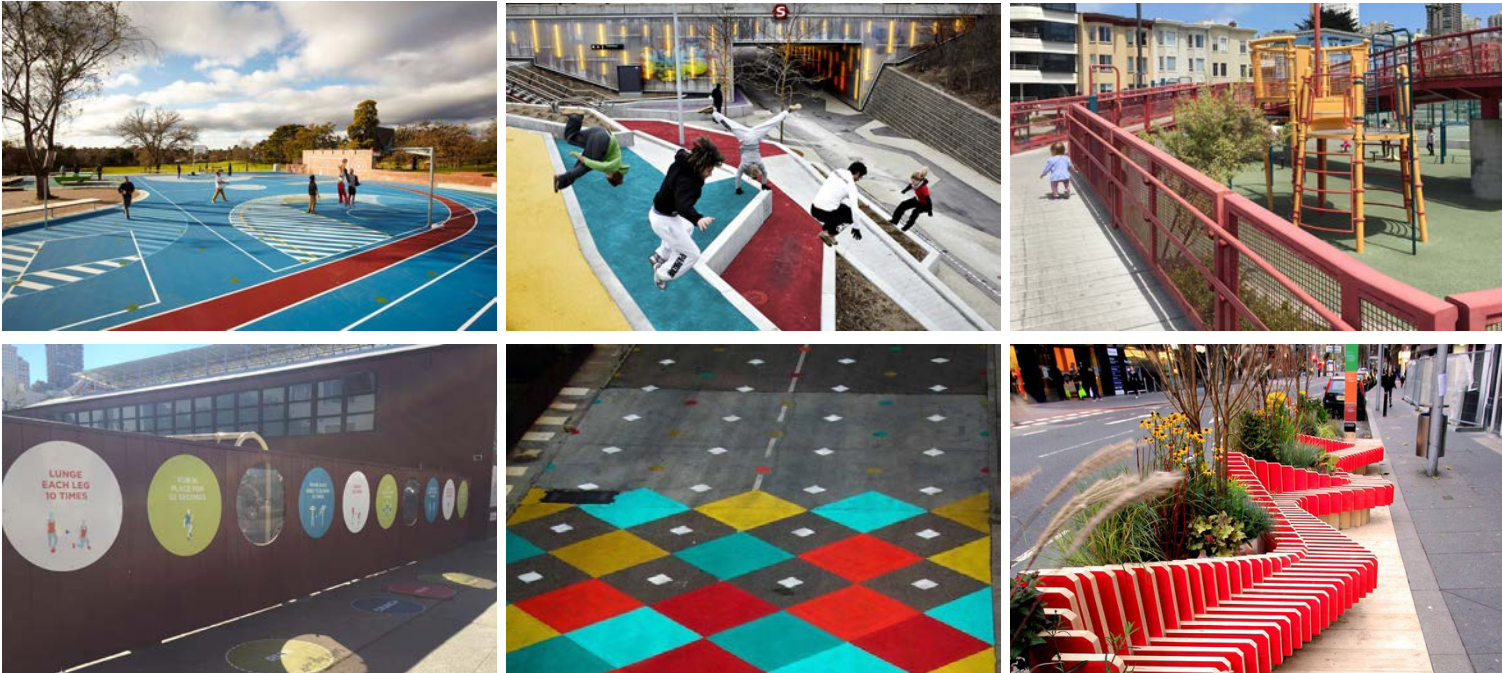
Design Inspiration

Margaret Hayward Playground | Civic Design Review: Informational | 06.20.16

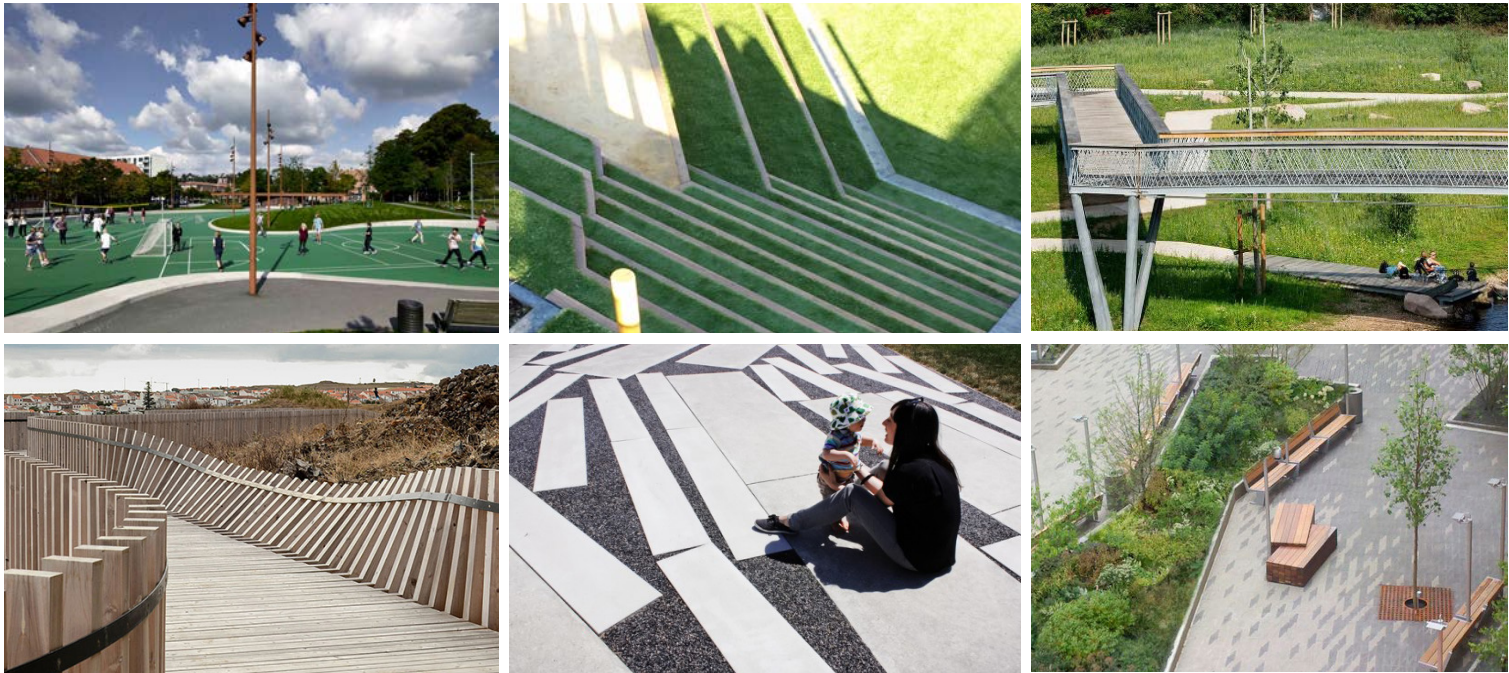




VIBRANT - community approved

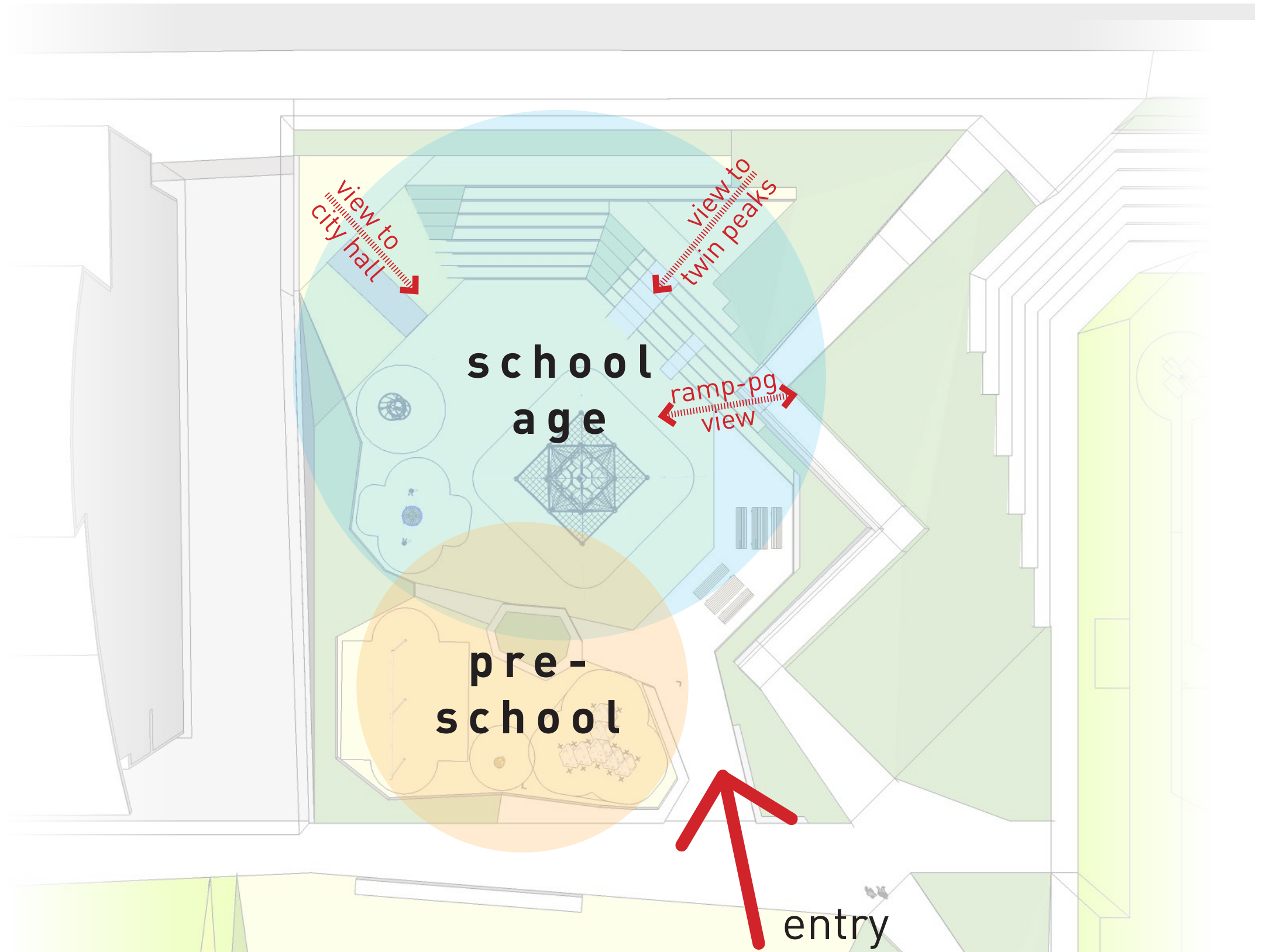


TRANQUIL



# PLAYGROUND STRATEGIES

- Serves Two Age Groups
- Exploration
- Challenge
- Collaborative Play



PRE-SCHOOL



SCHOOL AGE



Building Design & Construction

Playground Development: Inspirations

Margaret Hayward Playground | Civic Design Review: Informational | 06.20.16

## EXISTING BUILDINGS

2,380 SQUARE FEET TOTAL

Recreation Building: 1,300 SF

- Community Room (550 sf)
- Unisex Restroom/Storage Room

Clubhouse: 1,080 SF

- Community Room (500 sf)
- Public Restrooms
- Small Kitchenette

## PROPOSED BUILDING

2,500 SQUARE FEET TOTAL

- Community Room (1,800 sf)
- Public Restrooms/Storage/  
Janitor (700 sf)



## PROJECT GOALS

- Flexible multi-use indoor space
- Fluid indoor-outdoor connection
- Visual Transparency

