

# MARIPOSA PUMP STATION

CIVIC DESIGN REVIEW - PHASE 3 - DECEMBER 11, 2017





## CDR PHASES 1&2 COMMENTS AND RESPONSES:

### BUILDING

-CONSIDER A GRANDER LIGHTING APPROACH TO SHOWCASE THE BUILDING (POSSIBLY UPLIGHTING)

**RESPONSE:** THE LANDOWNER (PORT) WANTS THE BUILDING TO BLEND INTO THE BACKGROUND AND WAS NOT AMENABLE TO LIGHTING THE BUILDING OTHER THAN FOR SECURITY PURPOSES.

-SUGGEST USING A MATTE FINISH CLEAR GRAFFITI COATING

**RESPONSE:** A MATTE FINISH CLEAR GRAFFITI COATING HAS BEEN SPECIFIED.

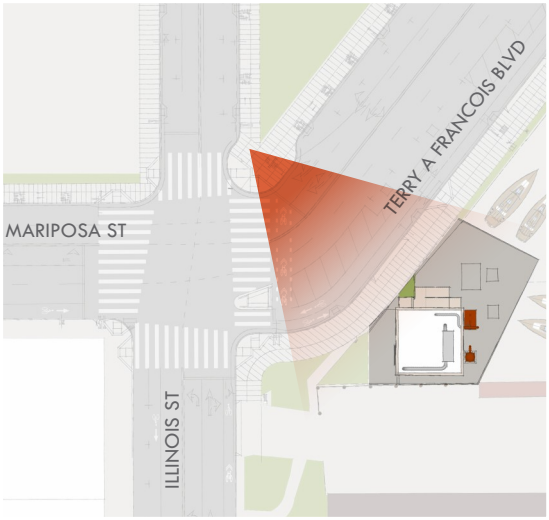
-INVESTIGATE THE CONCRETE REVEAL PATTERN AND ADJUST SPACING TO ELIMINATE CRACKING IN THE CONCRETE

**RESPONSE:** SPACING HAS BEEN ADJUSTED SLIGHTLY. PLEASE SEE UPDATED ELEVATIONS.

### SITE DESIGN

-CONSIDER SIMPLIFYING THE PLANTING PALETTE IN THE BLUE GREENWAY AREA

**RESPONSE:** THE PLANT PALETTE HAS BEEN SIMPLIFIED. PLEASE SEE UPDATED PALETTE.







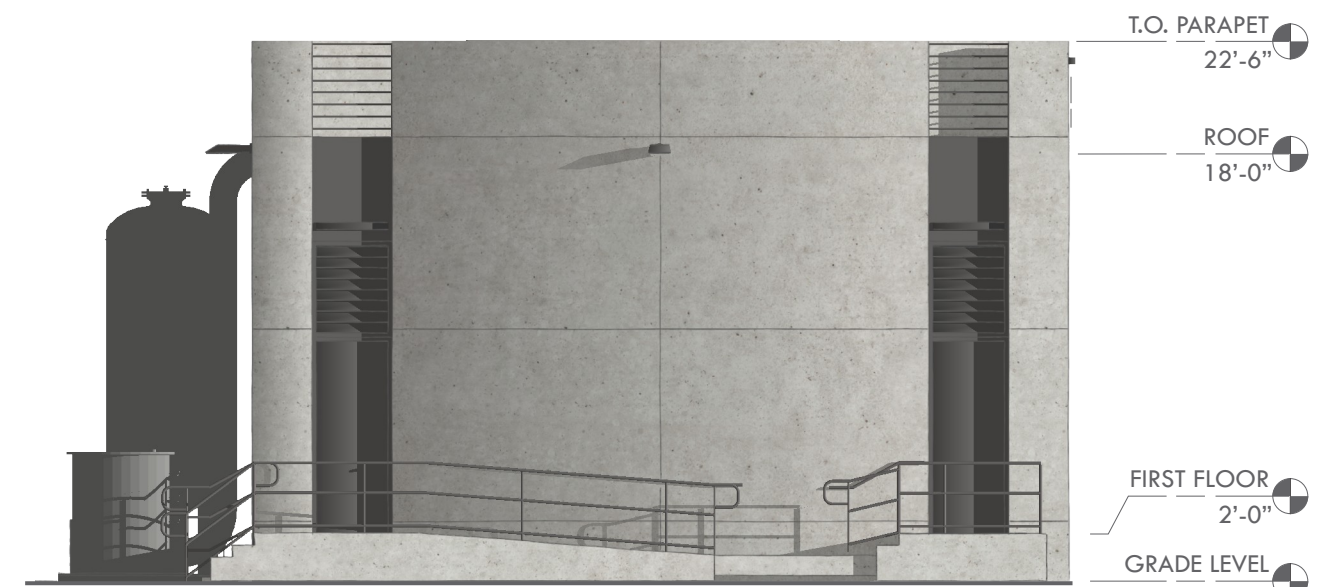
EAST ELEVATION



WEST ELEVATION



SOUTH ELEVATION

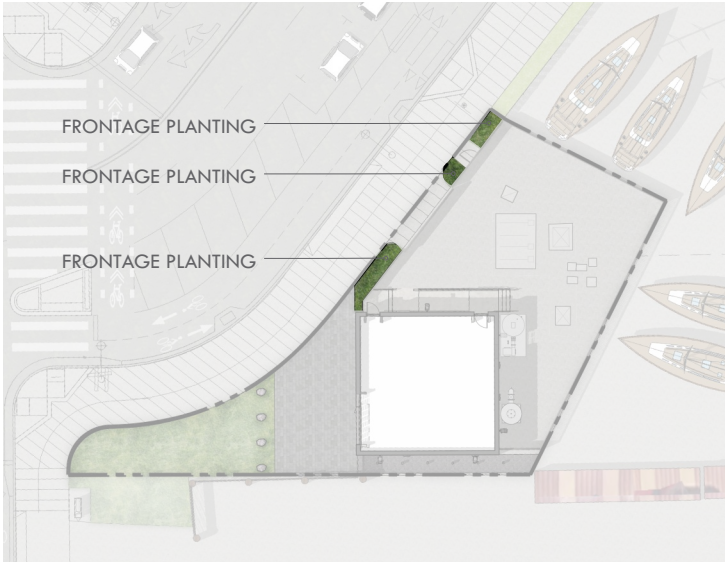


NORTH ELEVATION





PALETTE 1



Iris douglasiana \*



Lomandra longifolia 'Nyalla'

PALETTE 2



Sisyrinchium bellum \*



Iris douglasiana \*



Erigeron glaucus x Wayne Roderick Daisy \*



Eriogonum grande var. rubescens \*



Calamagrostis foliosa \*



Baccharis pilularis 'Twin Peaks' \*



Ceanothus maritimus 'Point Sierra' \*

\* California Native



