

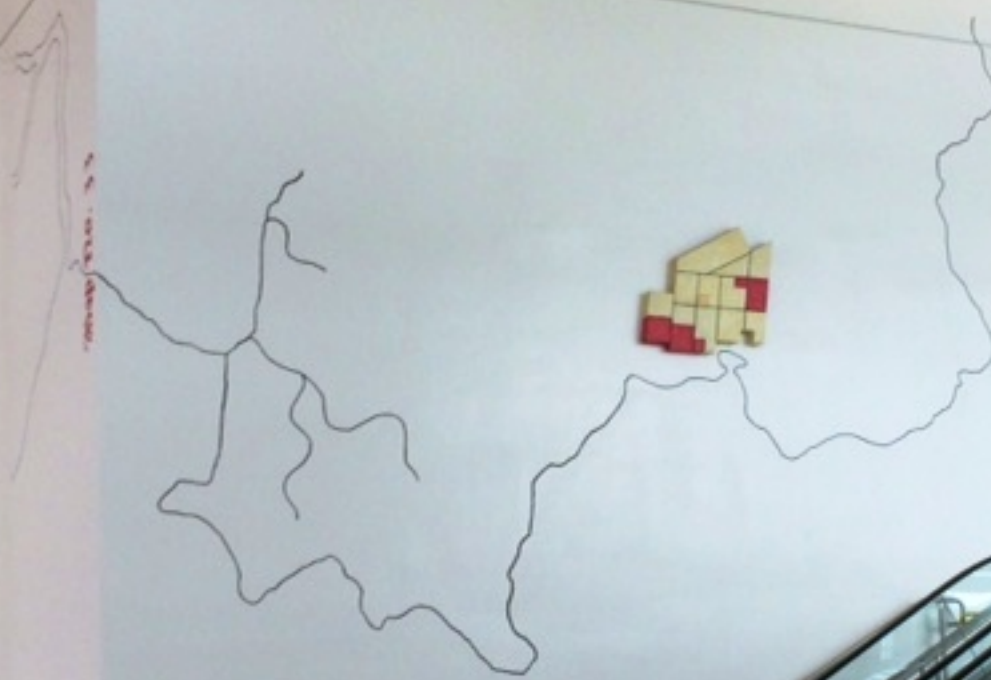
City of the Future in 1979

By the year 2000, the city will be a more compact, more efficient, more livable, and more beautiful place than it is today.

City of the Future
1979



Plaza of —
la Puente —



300





↑
MEETING ROOMS
200-276

↑
ROOMS
100-106

ESPLANADE
100



Map No. 51

The 1858 Plan of Santa Barbara represented almost, by José Antonio Vagstad, was the first map of San Francisco based upon a formal survey. With its tidy street geometry, it describes a cluster of lines and buildings scattered around Portsmouth Square, in what was then the town's core center, and what is today the heart of Chinatown. This map is the main inspiration for the artwork in this exhibit.



Map No. 52

Historical Maps are not isolated documents issued for the amusement of bibliographers, but they fall into our hands after their best days are done. If we make a meticulous list of their titles, we record little more than the bare facts of their existence—we compile, as it were, only their vital statistics. Every serious map is a product of circumstances over which some degree of control is sought and exerts a force in shaping events within its scope. By recognizing a map's fundamental utility, we restore its natural dignity and demonstrate its importance as historical evidence.

Neal Harlow

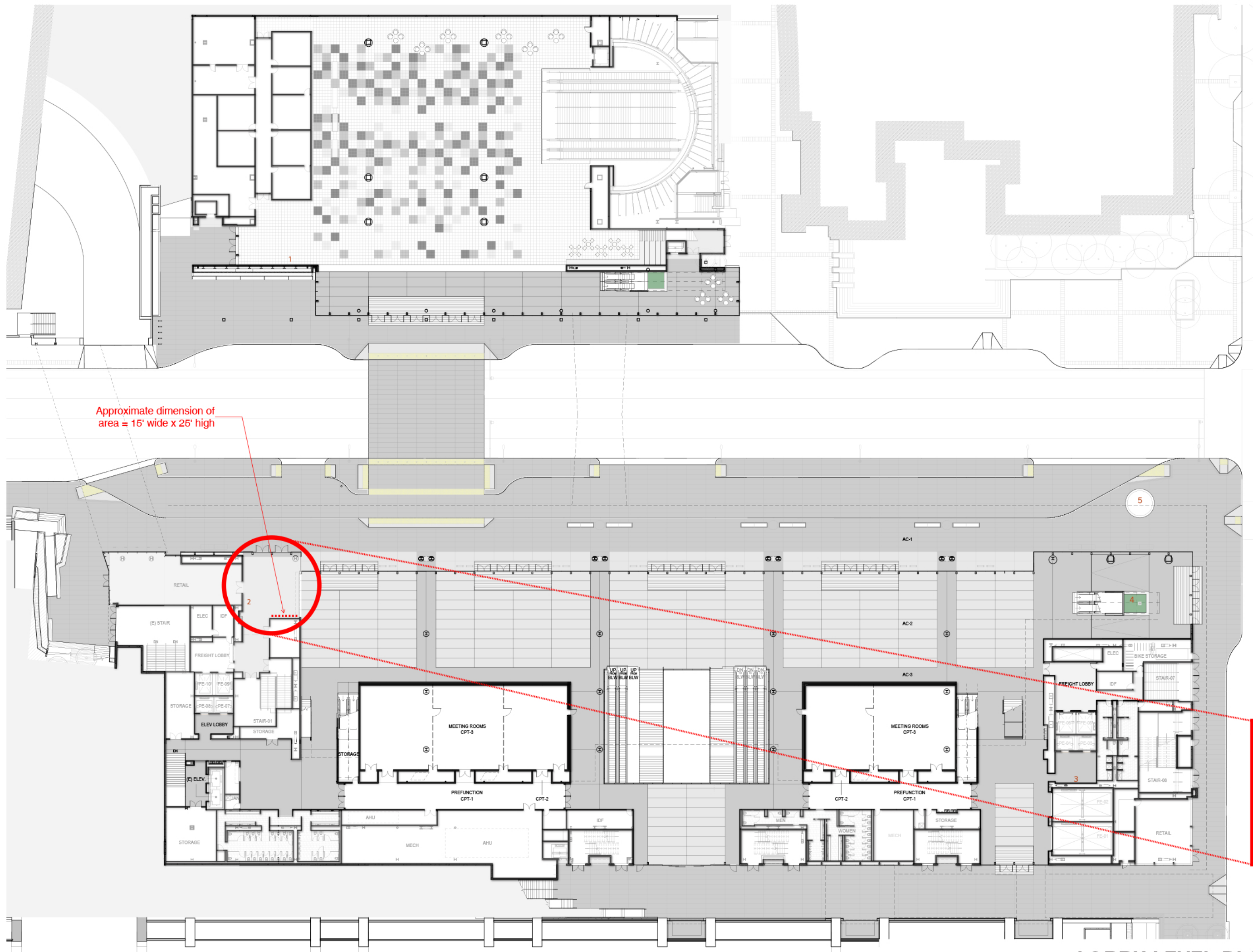




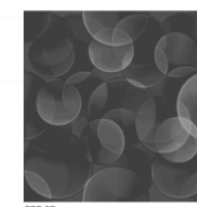
GEORGE R. MOSCONE
1929 - 1978

"SAN FRANCISCO IS AN EXTRAORDINARY CITY,
BECAUSE ITS PEOPLE HAVE LEARNED HOW TO
LIVE TOGETHER WITH ONE ANOTHER TO RESPECT
EACH OTHER AND TO WORK WITH EACH OTHER FOR
THE FUTURE OF THEIR COMMUNITY. THAT'S THE
STRENGTH AND THE BEAUTY OF THIS CITY ...
AND IT'S THE REASON WHY THE CITIZENS WHO LIVE
HERE ARE THE LUCKIEST PEOPLE IN THE WORLD."

MEMBER BOARD OF SUPERVISORS
JANUARY 8, 1964 TO DECEMBER 27, 1966
STATE SENATOR
JANUARY 8, 1967 TO JANUARY 8, 1978



Approximate dimension of
area = 15' wide x 25' high



5 KEITH HARING
"UNTITLED (THREE
DANCING FIGURES)" 2003
PAINTED STEEL



4 SPERO ANARGYROS
"GEORGE MOSCONE"
BRONZE



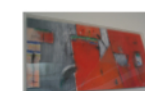
3 TOM HOLLAND
"MORENO" 1981
EPOXY PAINT ON ALUMINUM
& FIBERGLASS



2 HUNG LUI
"UNTITLED"
DRAWINGS OF ARTIFACTS
ON GLAZED CERAMIC TILES



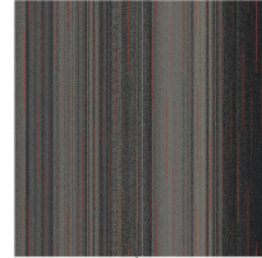
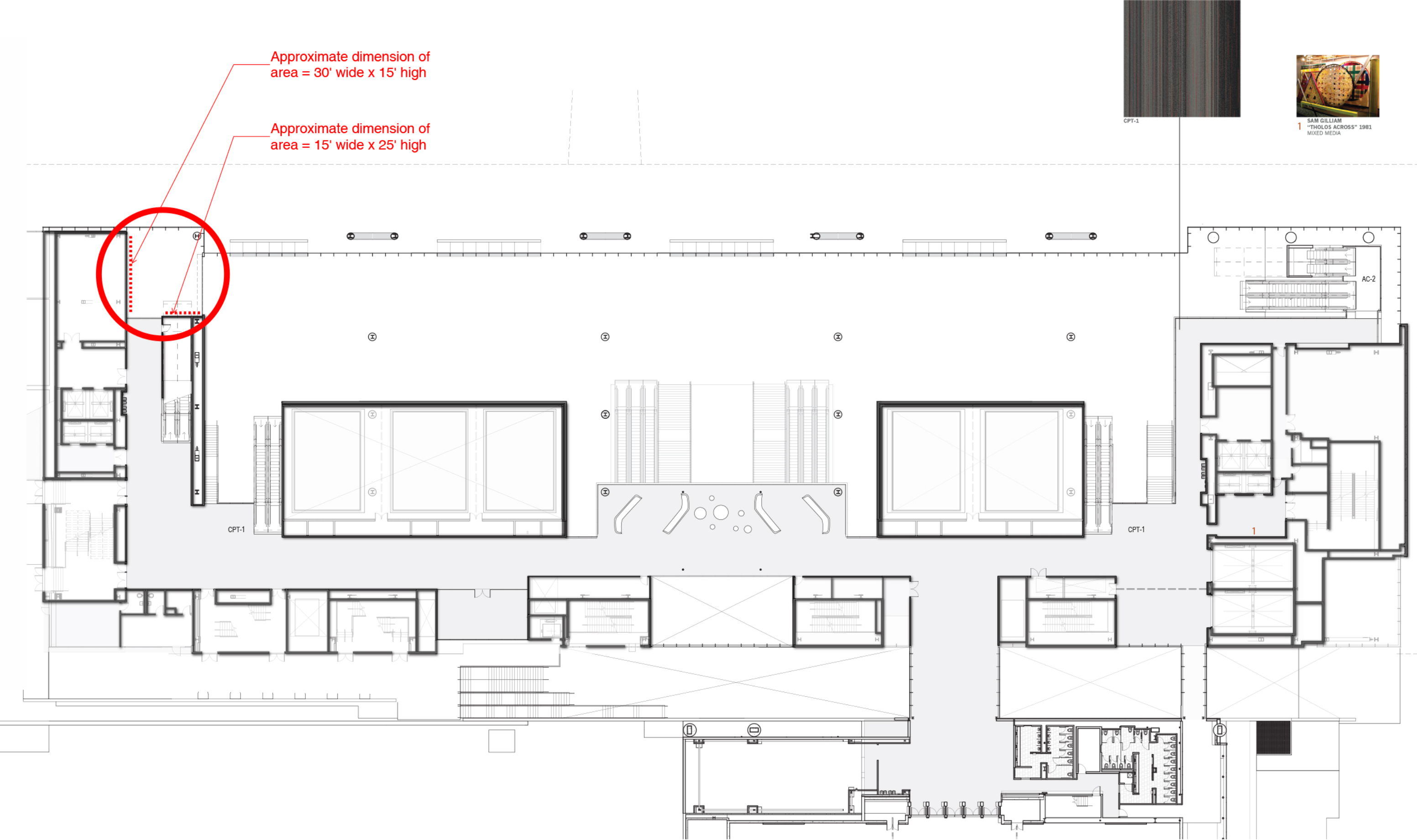
2 HUNG LUI
"MAP NO. 31" 1992
MIXED MEDIA



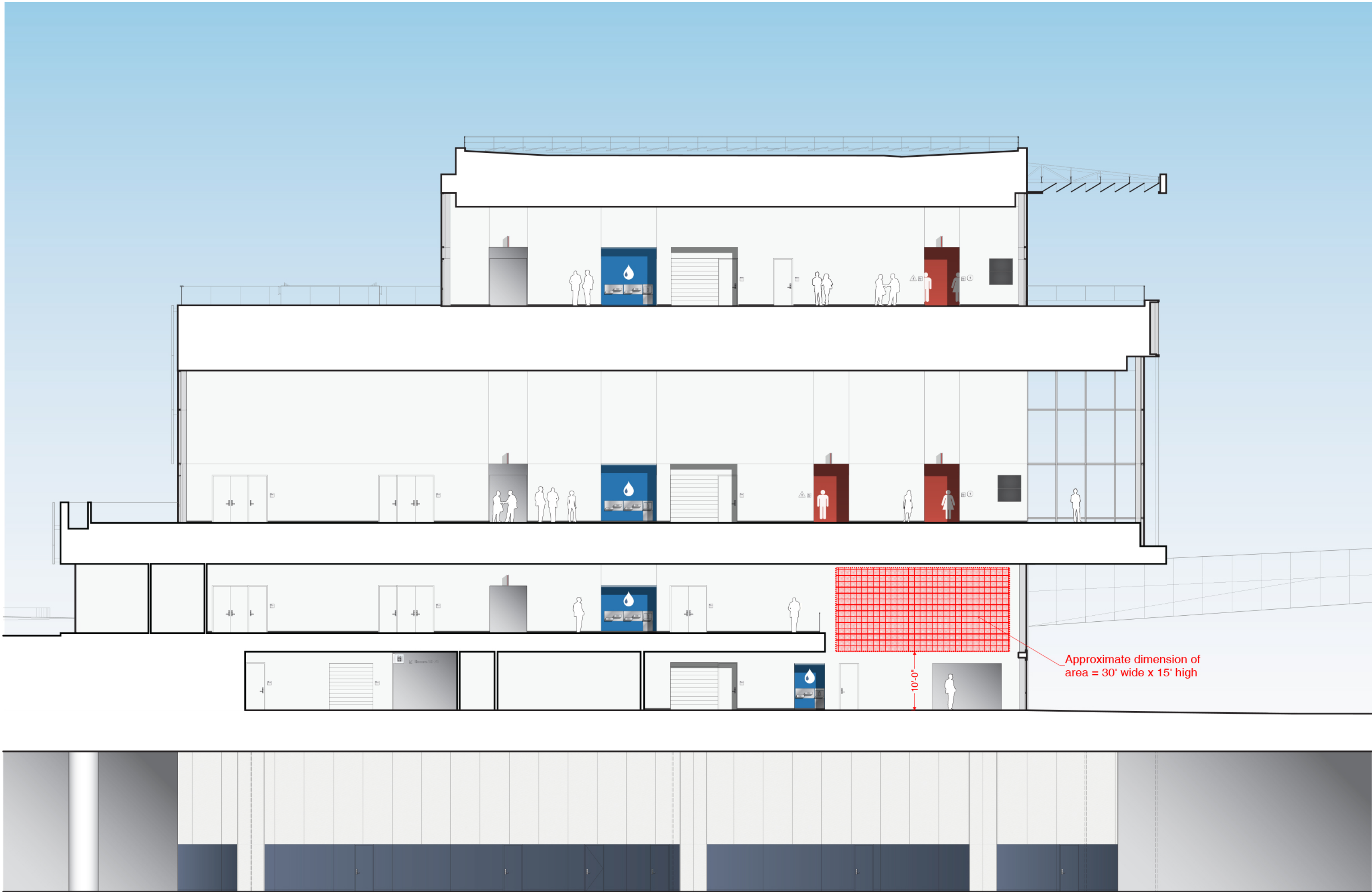
1 GUSTAVO RIVERA
"Untitled" 1981

LOBBY LEVEL PLAN

MOSCONE CENTER EXPANSION · INTERIORS REVIEW
JANUARY 27, 2015



MEZZANINE LEVEL PLAN
MOSCONE CENTER EXPANSION - INTERIORS REVIEW
JANUARY 27, 2015



TRANSVERSE SECTION THROUGH WEST CORRIDOR, LOOKING WEST
MOSCONE CENTER EXPANSION - INTERIORS REVIEW
JANUARY 27, 2015