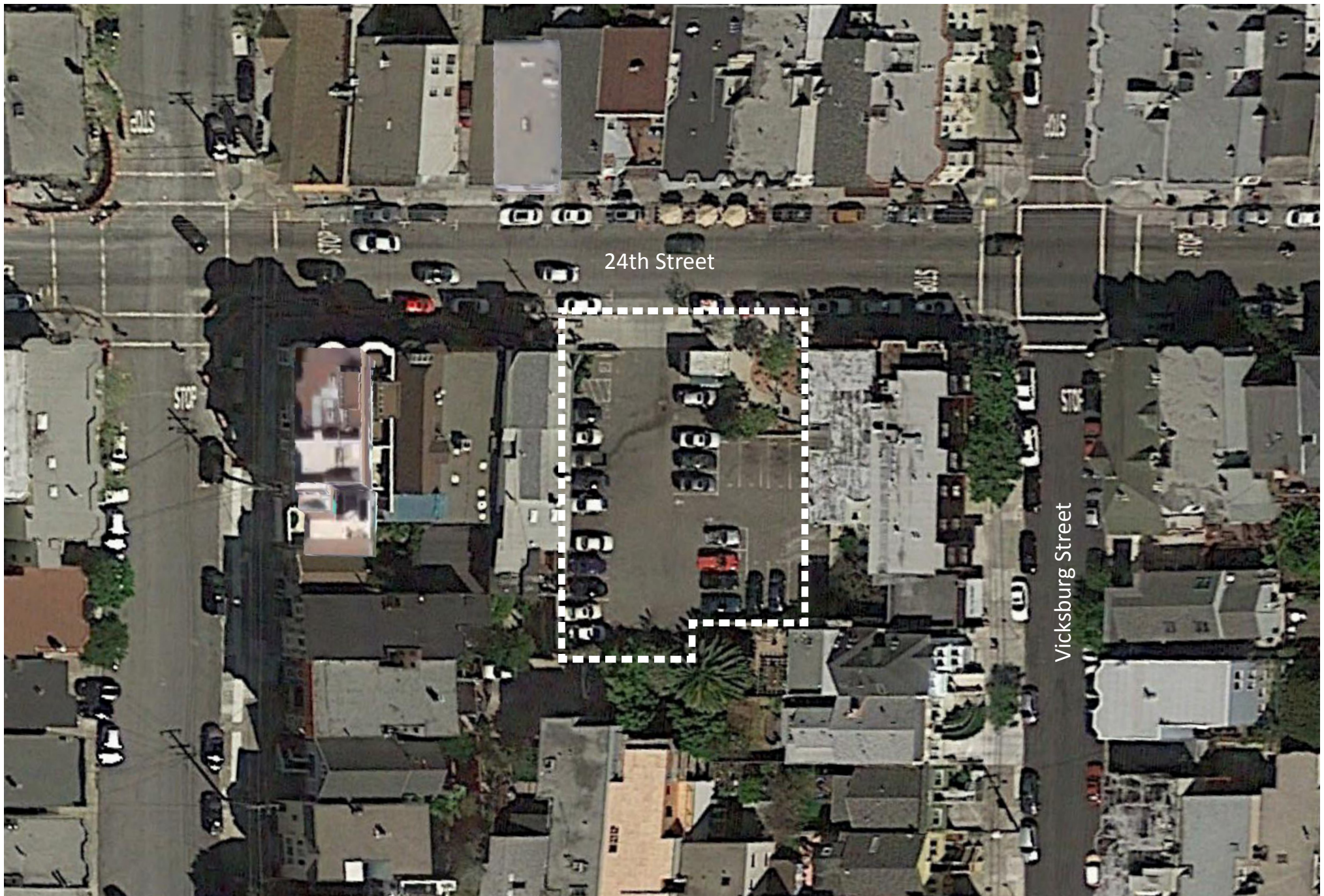


Noe Valley Town Square

Oct. 19th, 2015

Civic Design Review Submittal - Phases 1 & 2









Urban Greening Grant

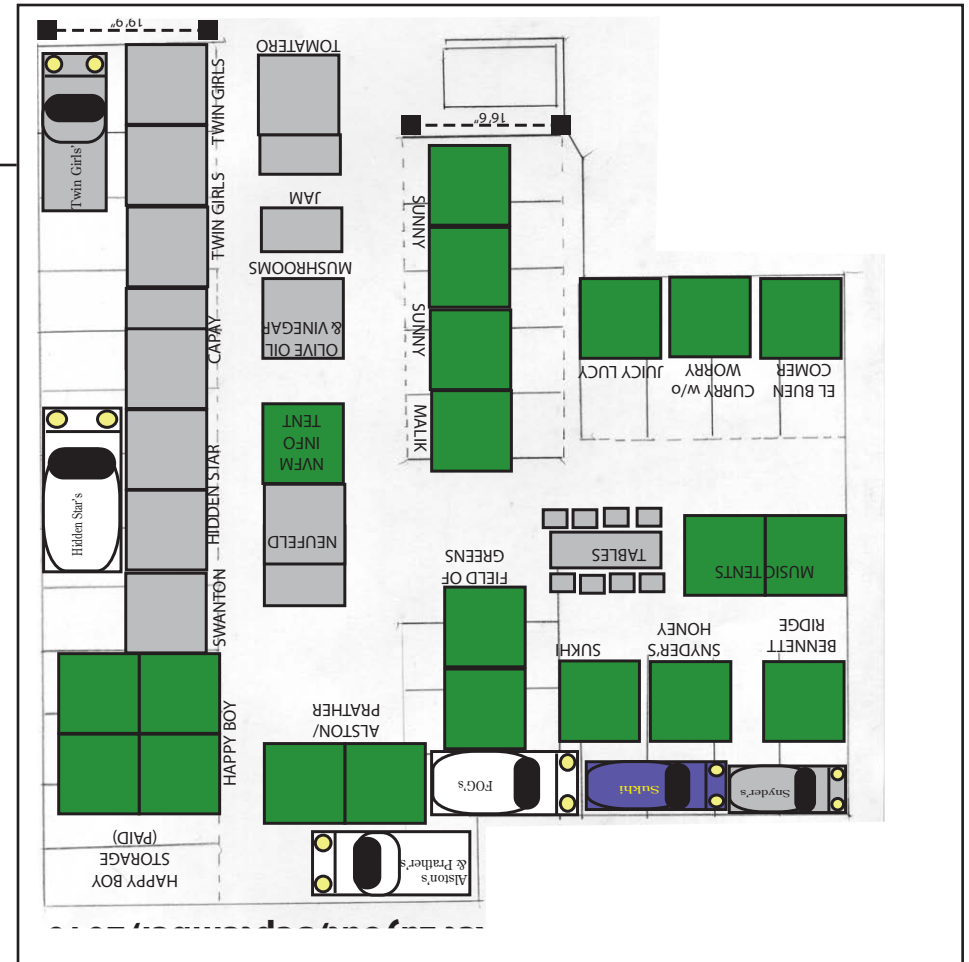
- 3,000 square feet of planting
- 17 Low pollen shade trees (10 @ 15 gal, 6 @ 24" box, and 1 @ 48" box)
- Concrete unit paving
- Tot play area with climbing wall
- Seating
- Site utilities and general site work

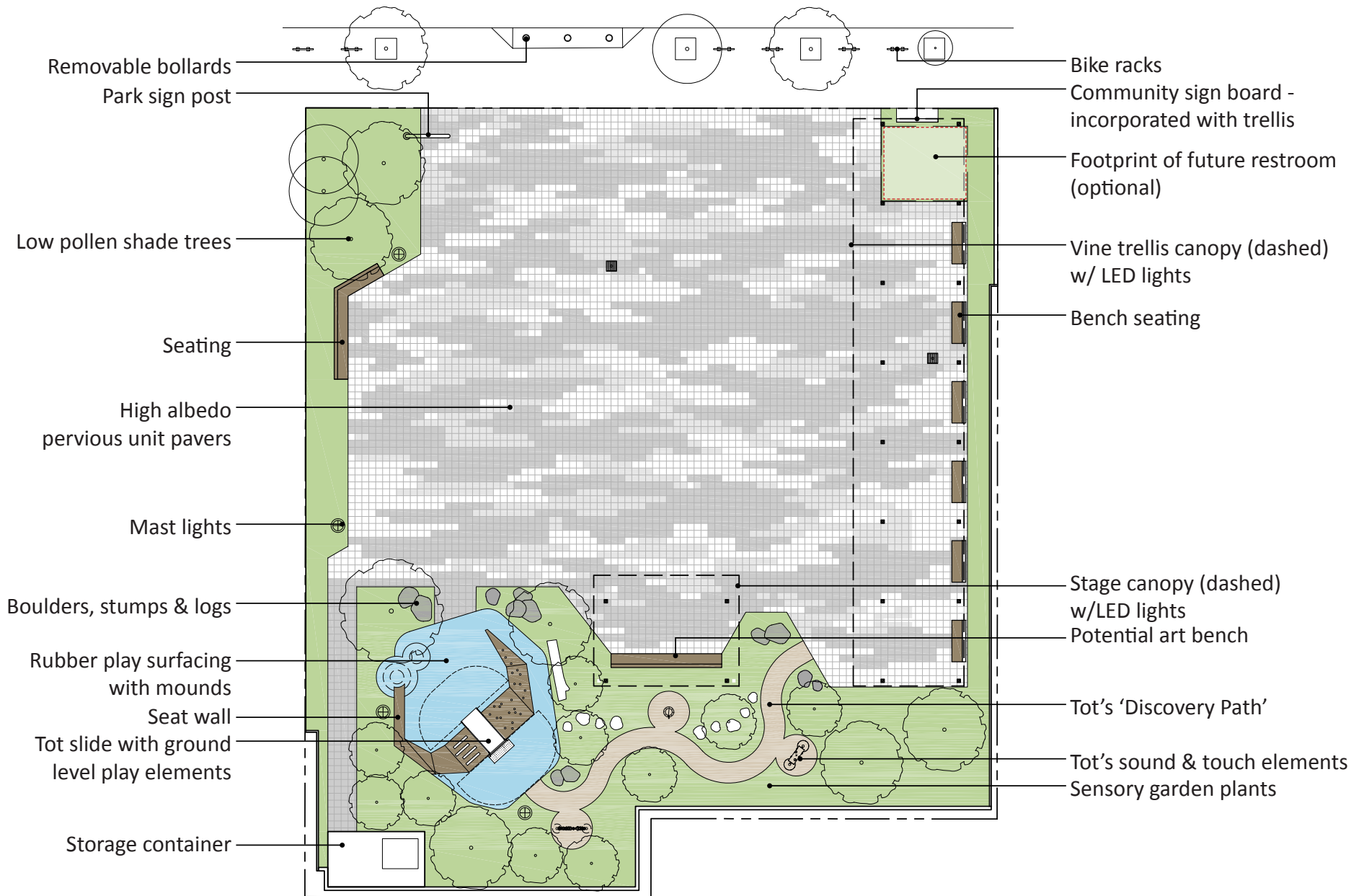
Farmers Market Requirements

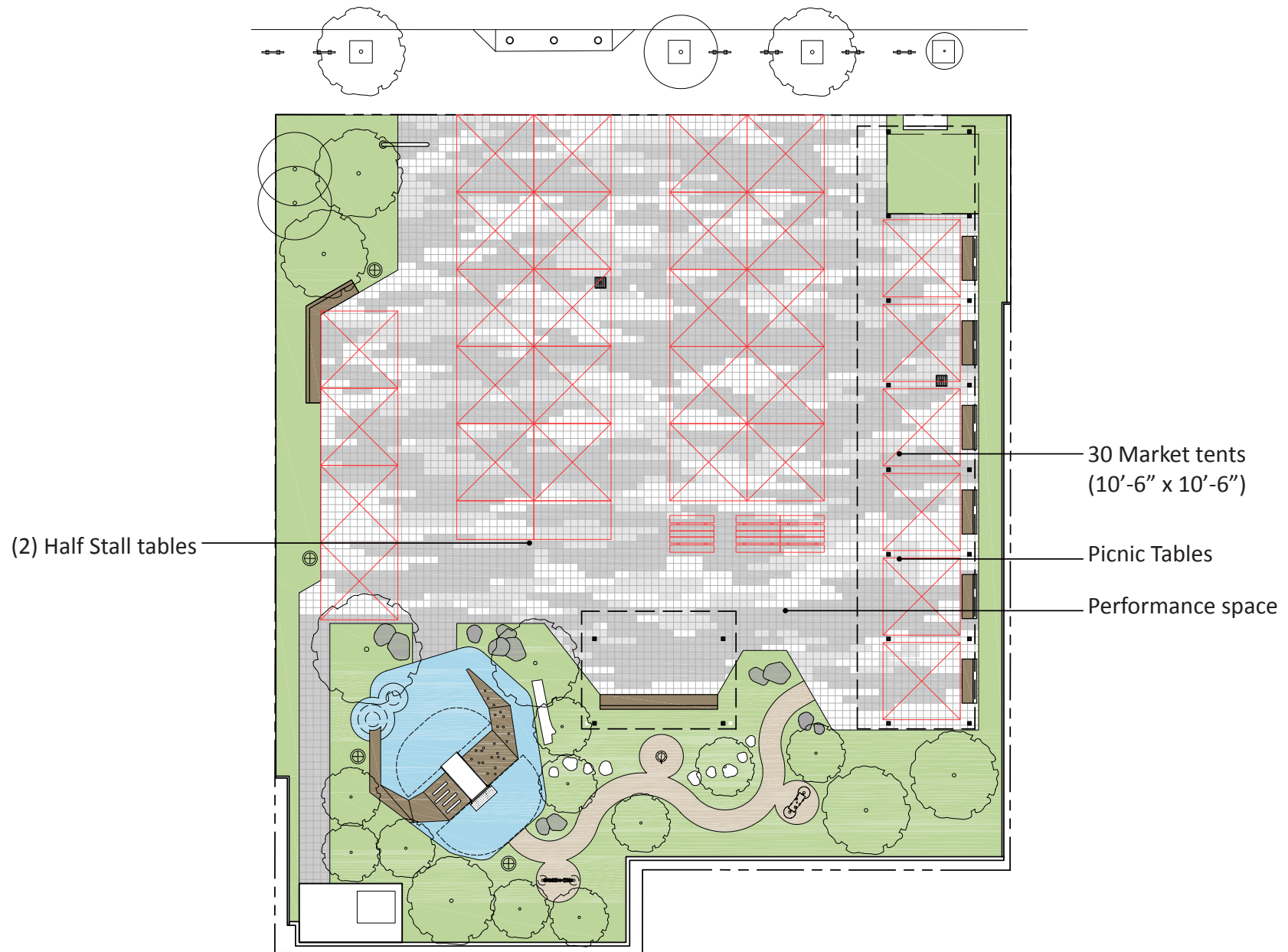
- 30 - 31 Vendor Tents
- 2 Music Tents (10' x 20' Sp.)
- 3+ Food Vendors w/ Double Sp.
- Table Area (10' x 20')

Additional Site Design Considerations

- Flexibility
- Solar Orientation
- Sound /Events
- Rear Planting Buffer
- Visibility & Lighting
- Accessibility
- Restroom Location









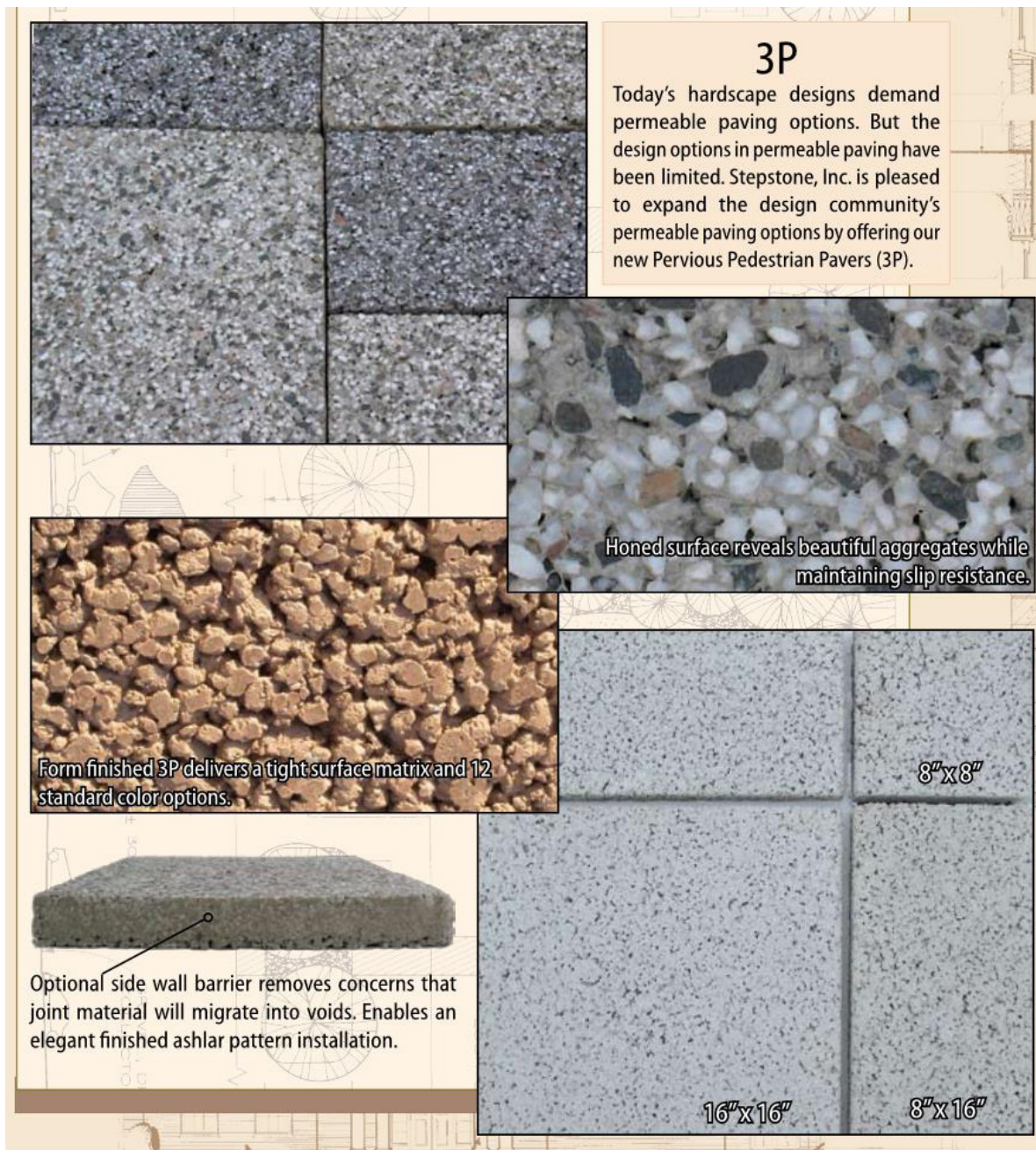
Perspective Renderings



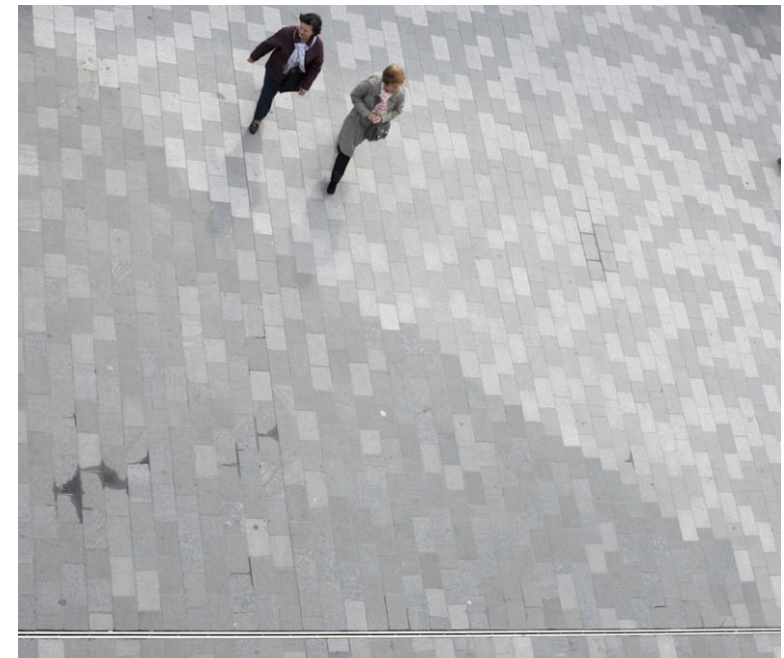
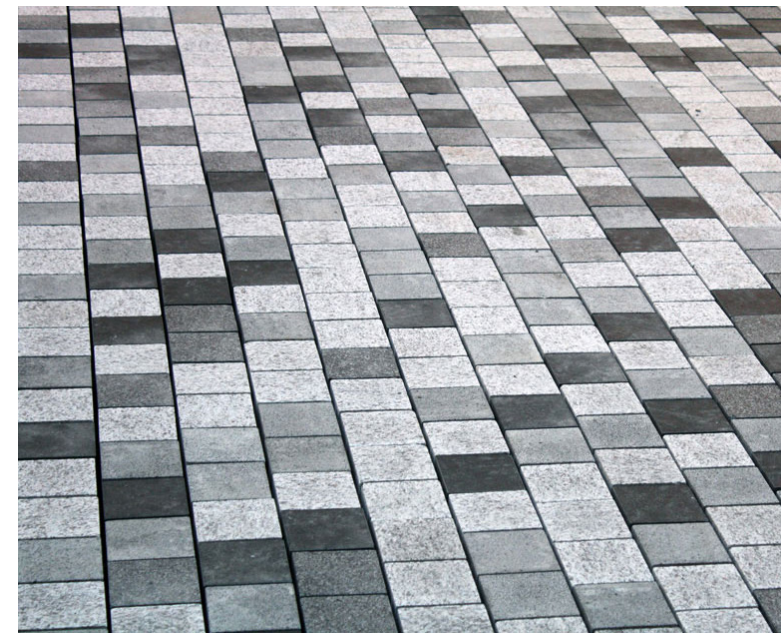


Perspective Renderings





StepStone Pervious Pavers (Vehicular)



Graphic paving pattern



Free play blocks



Custom wood & TotTurf topographic playscape with slide

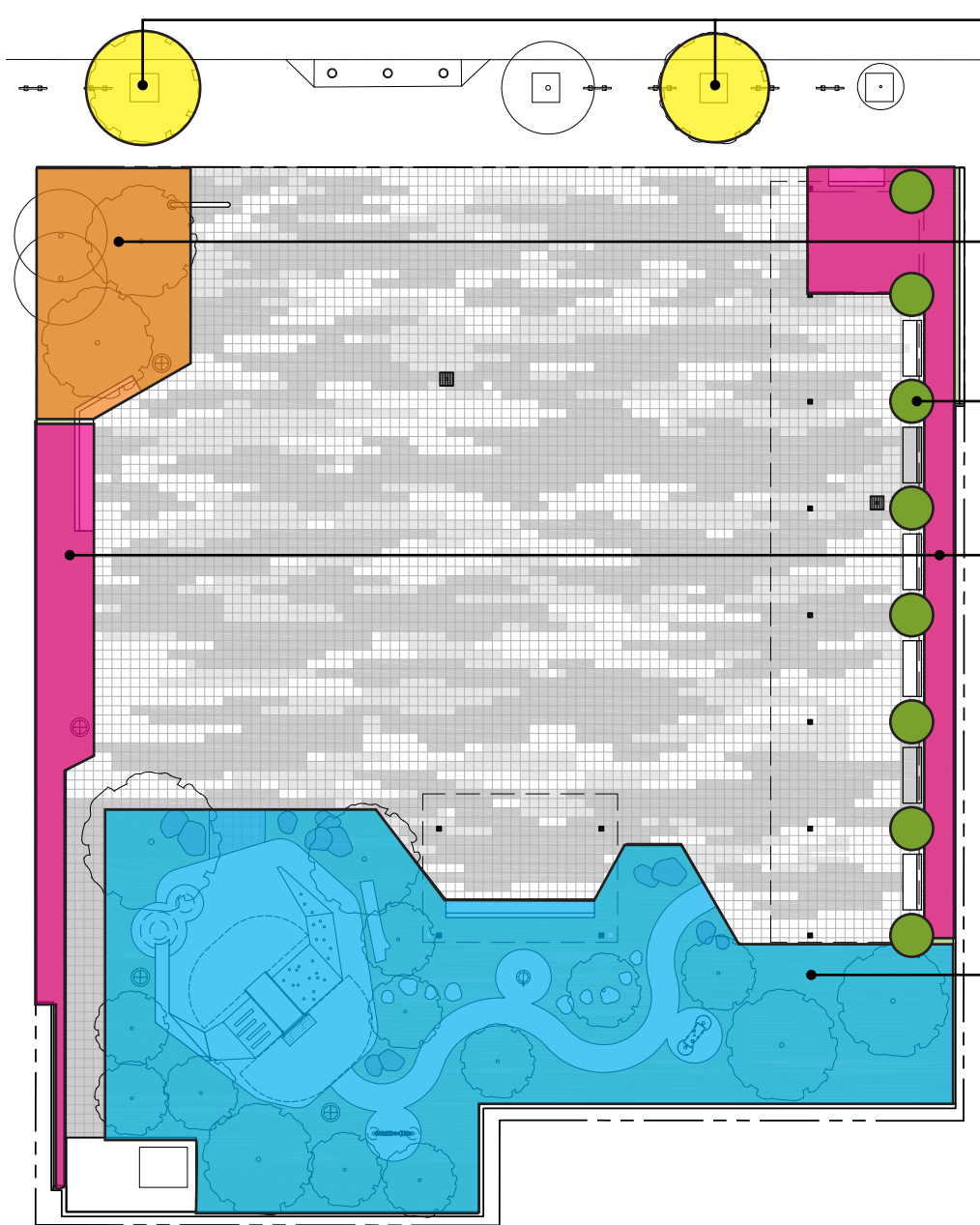


Sensory / interactive 'Discovery Path' elements



TotTurf





Street trees:
Replant dead/missing trees

Entry Grove:
Existing juniper trees with additional oak trees
and understory planting

Vines on trellis:
Trumpet vine

Edge planting:
Low maintenance drought tolerant shrubs to
block existing perimeter sound wall (6-8' tall)

Sensory & Pollinator garden:
Drought tolerant plants that attract beneficial
insects and/or have a character that appeals to
the five senses.

Trees

Quercus agrifolia - Coast Live Oak
Cercis occidentalis - Western Redbud

Touch

Achillea millefolium - Yarrow
Stachys byzantina - Lamb's Ear
Eschscholtzia californica - California Poppy
Pennisetum setaceum 'Rubrum' - Purple fountain grass
Sempervivium sp. - Hens-and-chicks
Festuca glauca - Blue fescue
Echinacea purpurea - Purple coneflower

Scent

Salvia 'Bee's Bliss' – Bee's Bliss Sage
Thymus sp. - Thyme
Lavandula angustifolia - English lavender
Syringa vulgaris - Lilac
Berlandiera lyrata - Chocolate flower
Mentha sp. - Mint

Beneficial Insect

Achillea millefolium - Yarrow
Aster chilensis - California Aster
Thymus sp. - Thyme
Leonotis leonurus - Lion's Tail
Penstemon sp. - Penstemon
Salvia 'Bee's Bliss' – Bee's Bliss Sage
Solidago californica - California Goldenrod
Zauschneria californica - California Fuschia

