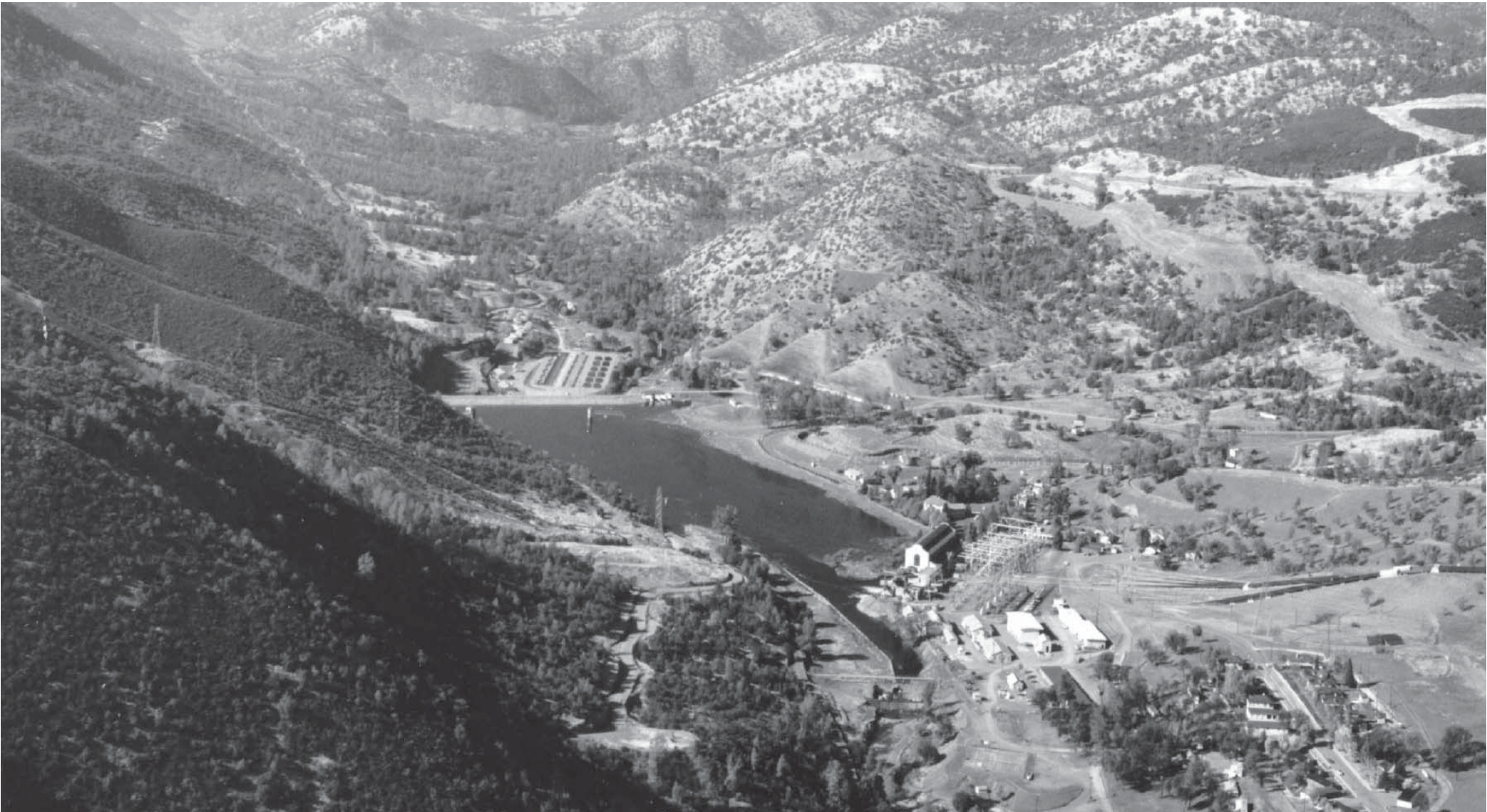


PUBLIC UTILITIES COMMISSION

|

MOCCASIN CORPORATION YARD IMPROVEMENT PROJECT

BUILDING #76 CIVIC DESIGN REVIEW - PHASE I (INFORMATIONAL PACKAGE)
MARCH 2015



MAPS



LEGEND

Above: Locator Map
Right: Area Map

PROJECT BACKGROUND

The SFPUC’s Moccasin Yard is located in the Tuolumne County, bounded by Moccasin Switchback Road on the east and south side and steep up-hill slopes on the west and most of the north side. The Moccasin Corporation Yard was built between the 1920’s and the 1960’s to support the power house and the Hetch Hetchy water and power system.

BUILDING #76

The Shops/office building is a flexible, multi-use space that can be easily converted between offices and shop spaces. Program includes additional break rooms, locker rooms and restroom Facilities.



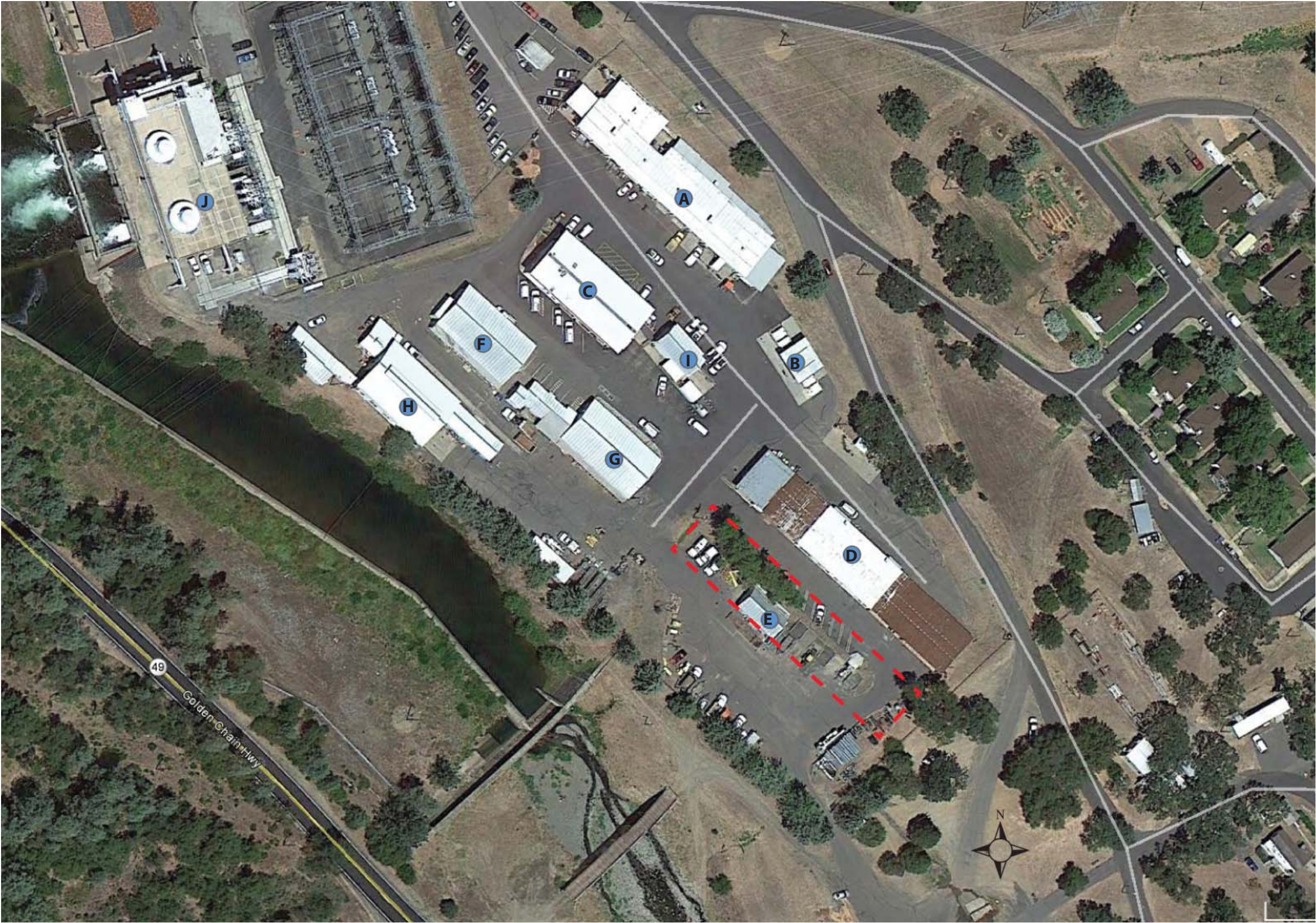
SITE MAP

The fenced boundary area of the yard is approximately 374,000 sq. ft. (8.58 acres). It is comprised of numerous buildings and structures used as shops, warehouses, office and residences. It is also the head-quarters for the Hetch Hetchy Operation Divisions that is responsible for construction and maintenance of the water system.

LEGEND

- A. Machine/Auto Shop
- B. Fuel Island
- C. Warehouse
- D. Paint/Electrical/Truck Port
- E. Old Paint Shop (Vacant, to be demolished)
- F. Carpenter Shop
- G. Field Office/Tool Room/Plumbing Shop
- H. Line Shop
- I. Hazmat/Oil/Water
- J. Power Plant

 FUTURE BUILDING 76 LOCATION



EXISTING SITE CONTEXT



Line Shop



Warehouse



Paint/Electrical/Truck Port



Carpenter Shop



Field Office/Tool Room/Plumbing Shop



Machine/Auto Shop

EXISTING SITE CONTEXT CONTINUED



Materials Bin and, Old Paint Shop, and the proposed site of Building 76



Views from the South Gate, the Old Paint Shop, Materials Bin (behind the yellow front end loaders) is the proposed location of Building 76

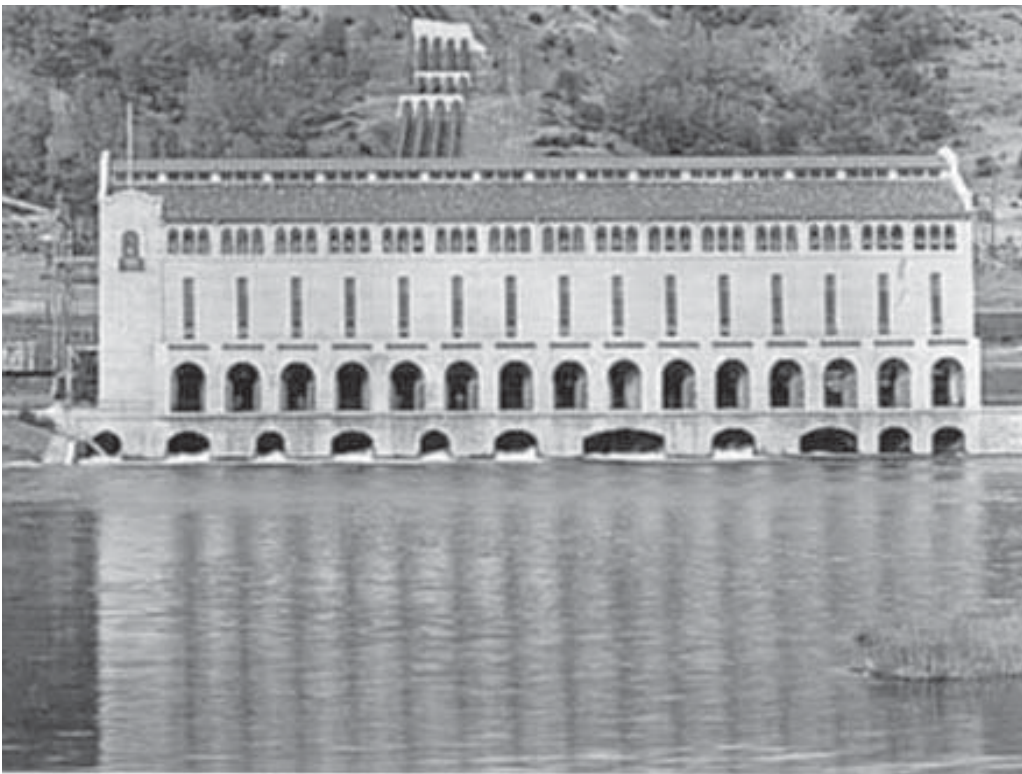
INSPIRATION FROM THE SURROUNDING



Water being piped in from Hetch Hetchy Reservoir to the New Power Plant



Typical metal panel orientation



The Original Moccasin Powerhouse (1925 -1969)

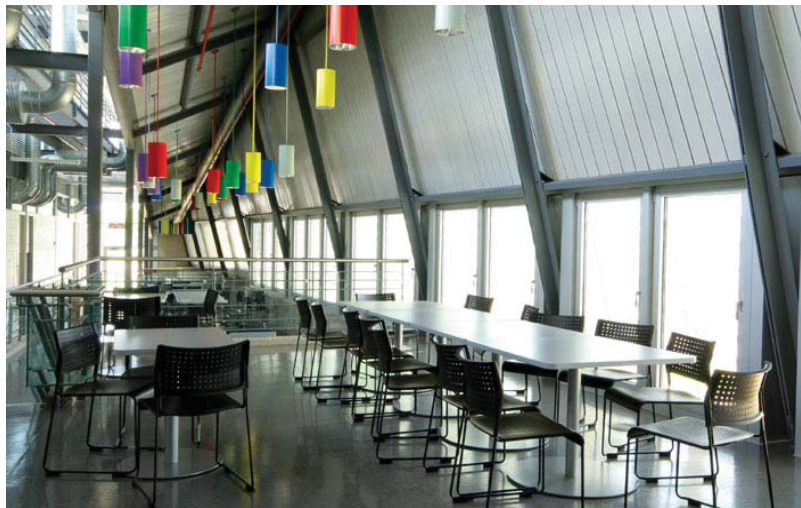


View from inside the Original Moccasin Powerhouse

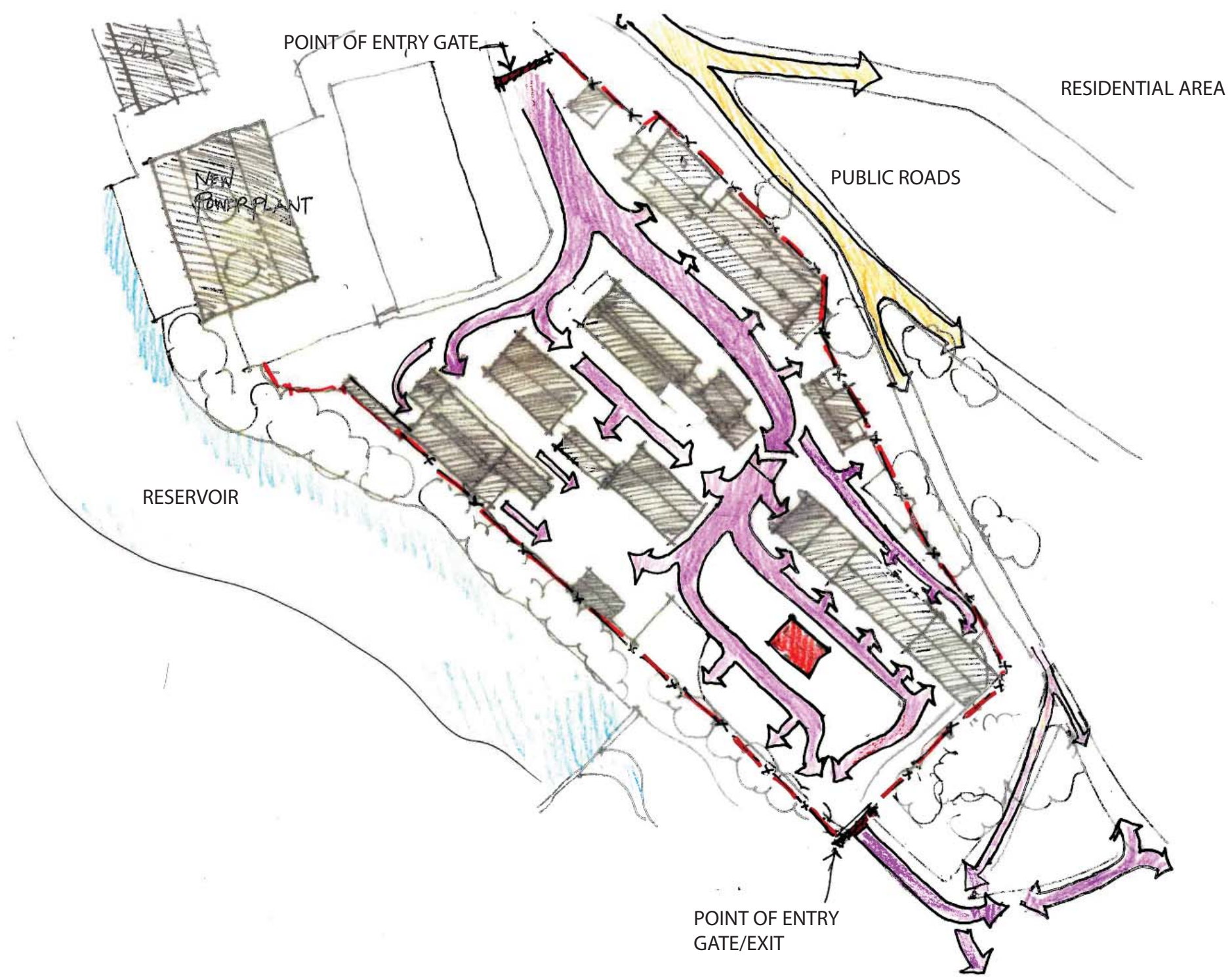


Distinct Vertical Presence Is Expressed Throughout the Area and the Original Moccasin Powerhouse

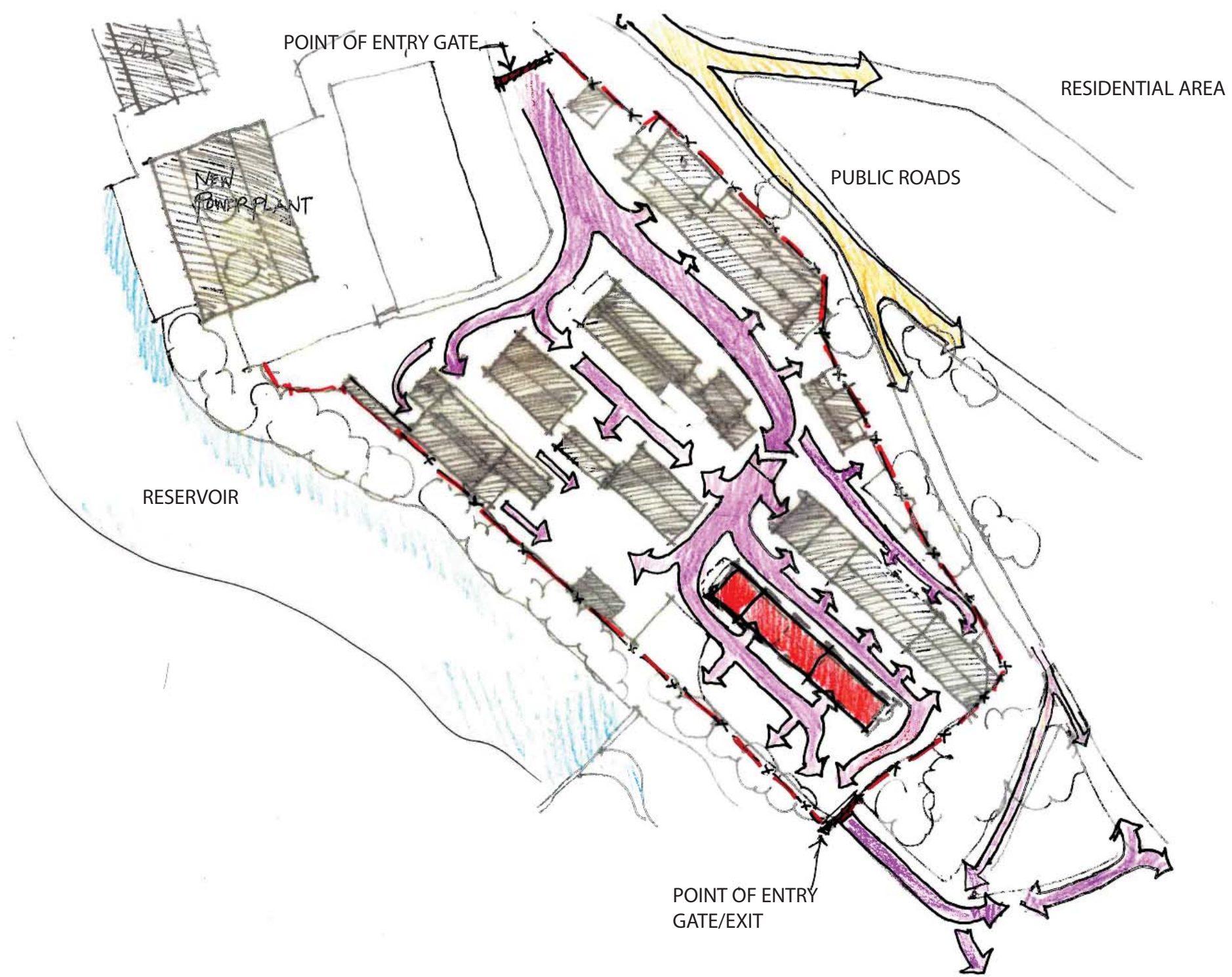
INSPIRATION FROM BUILDINGS



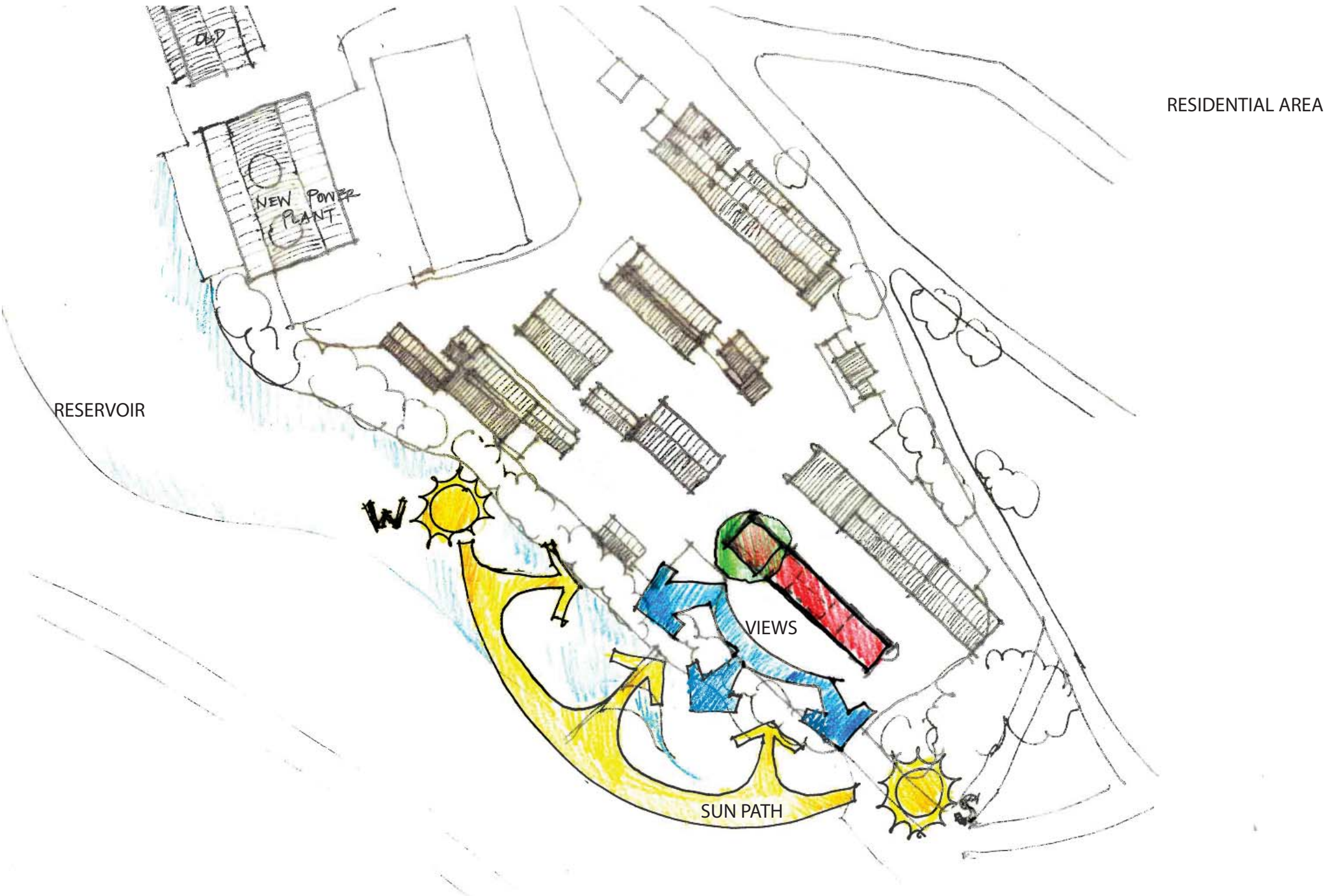
EXISTING CIRCULATION DIAGRAMS



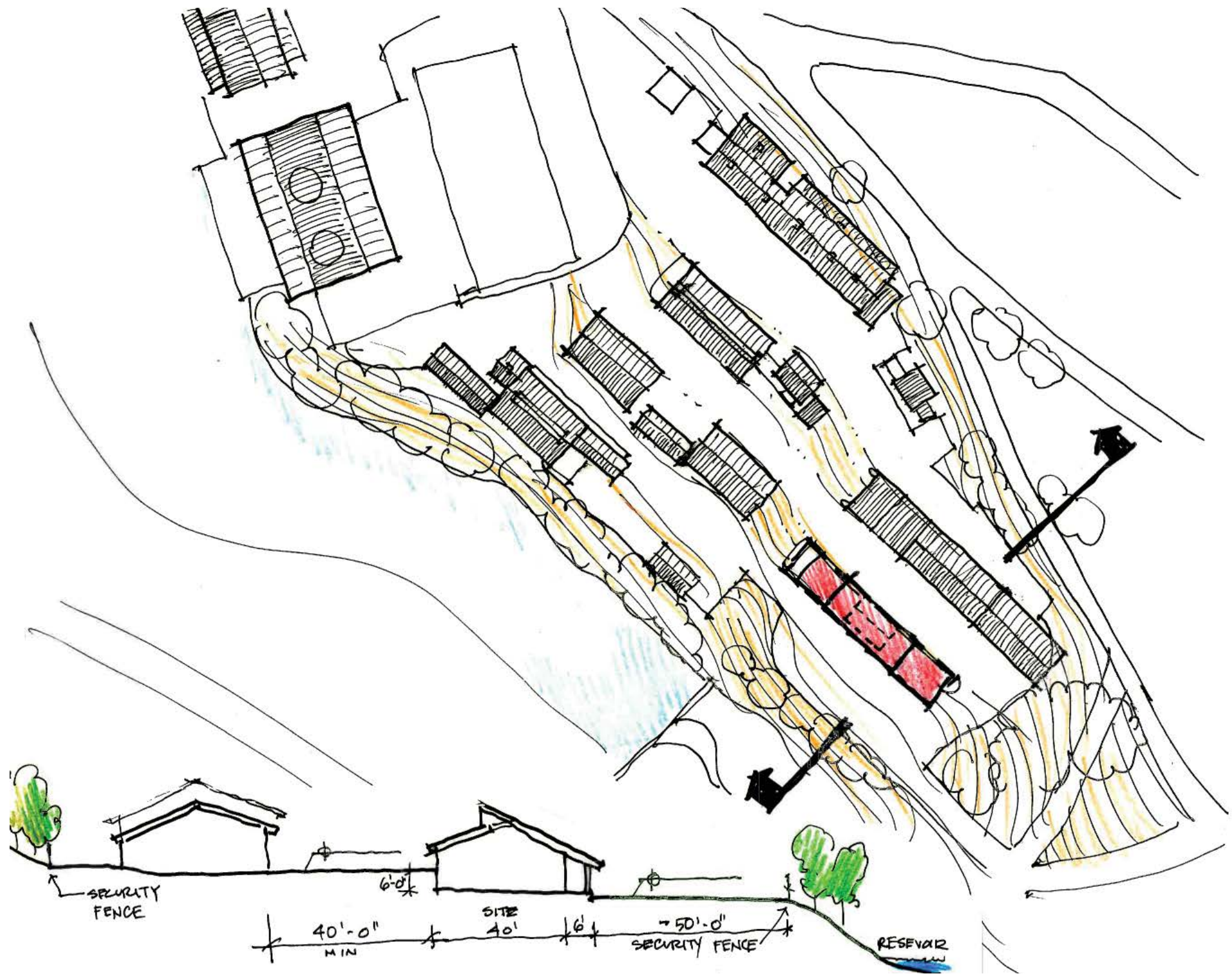
PROPOSED CIRCULATION DIAGRAMS



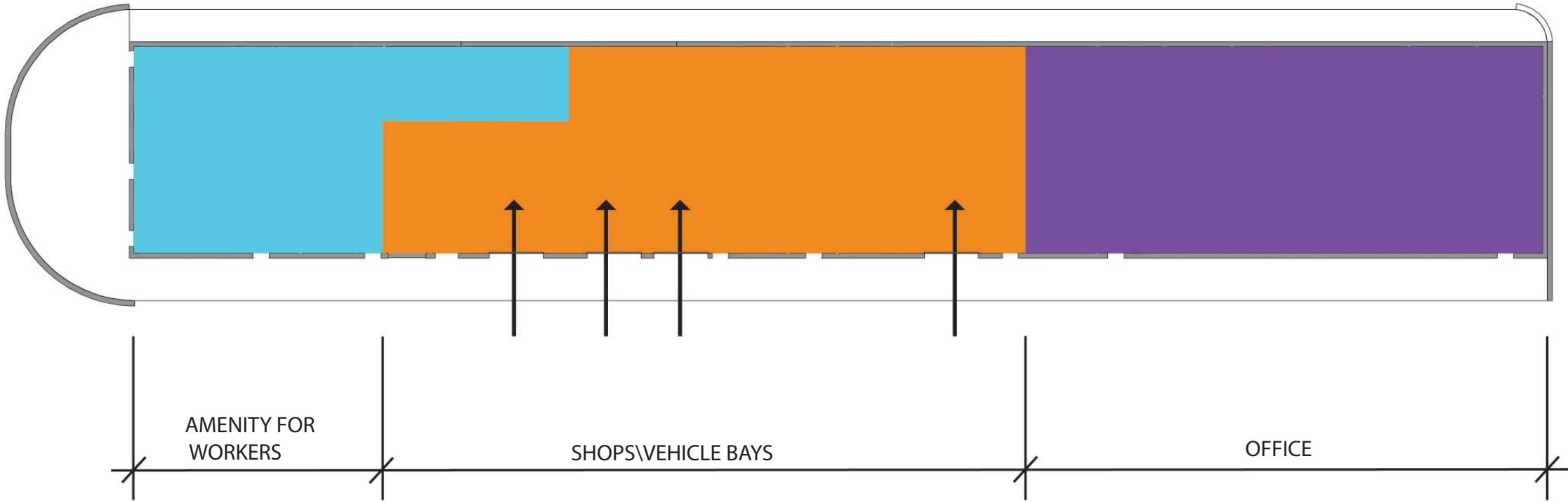
VIEWS DIAGRAMS



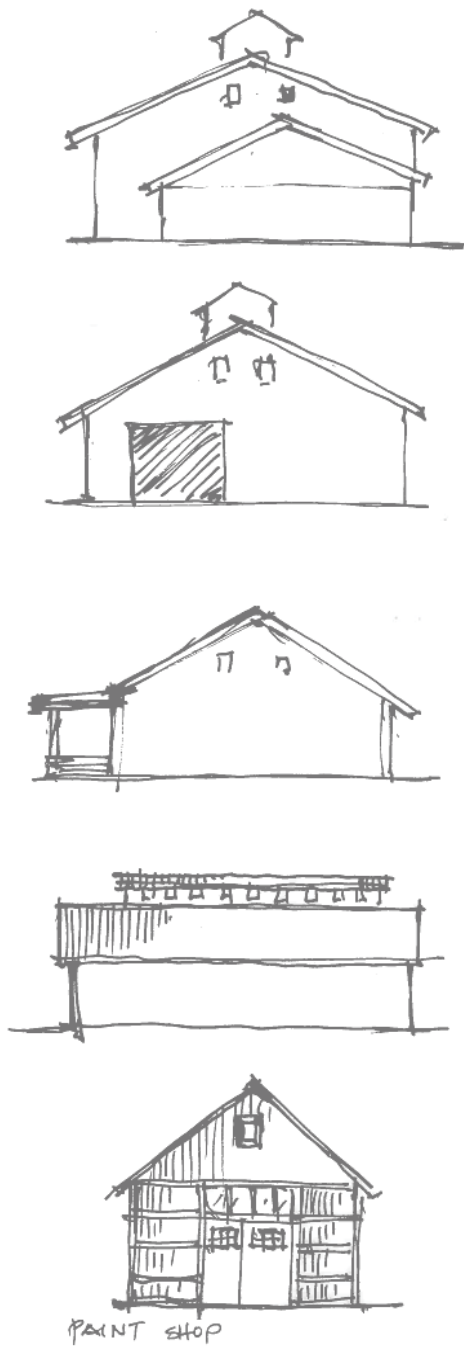
SITE SECTION DIAGRAMS



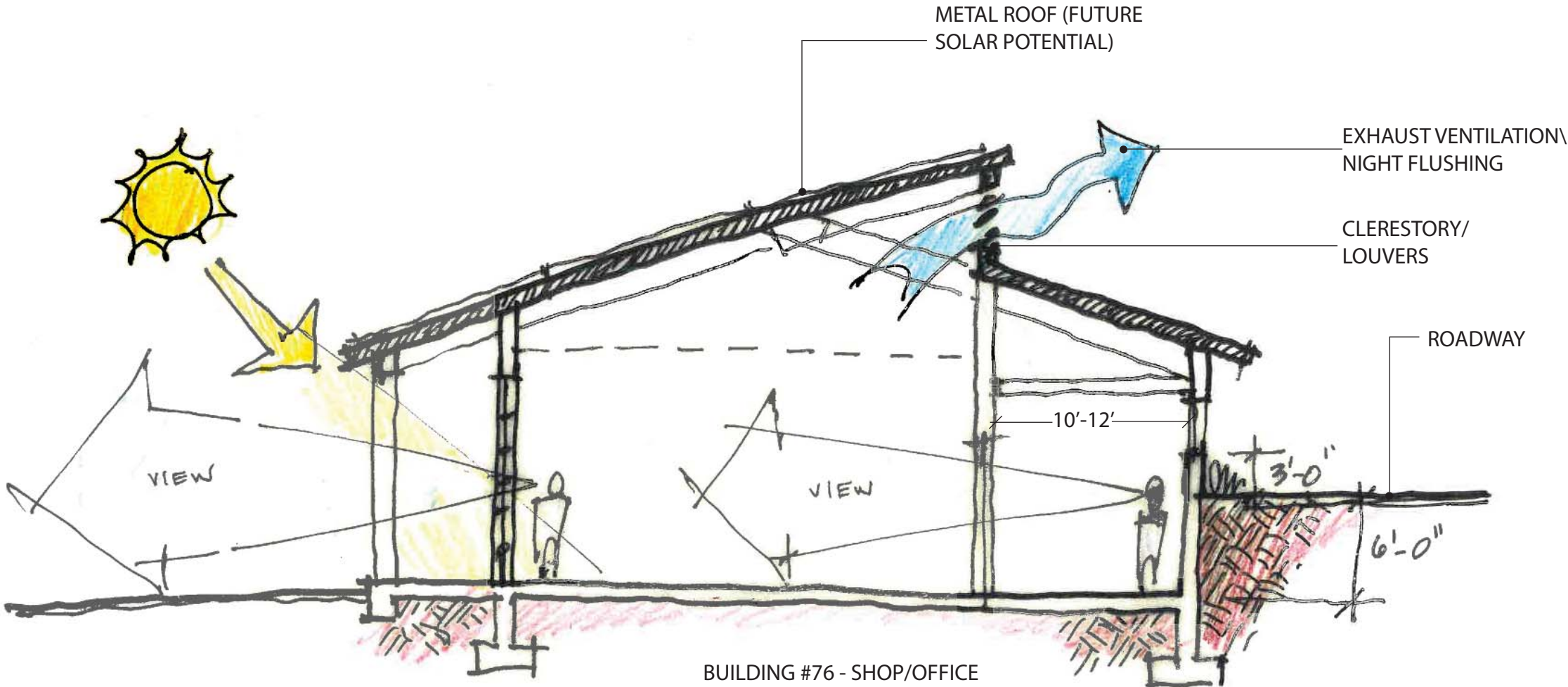
FLOOR PLAN DIAGRAM



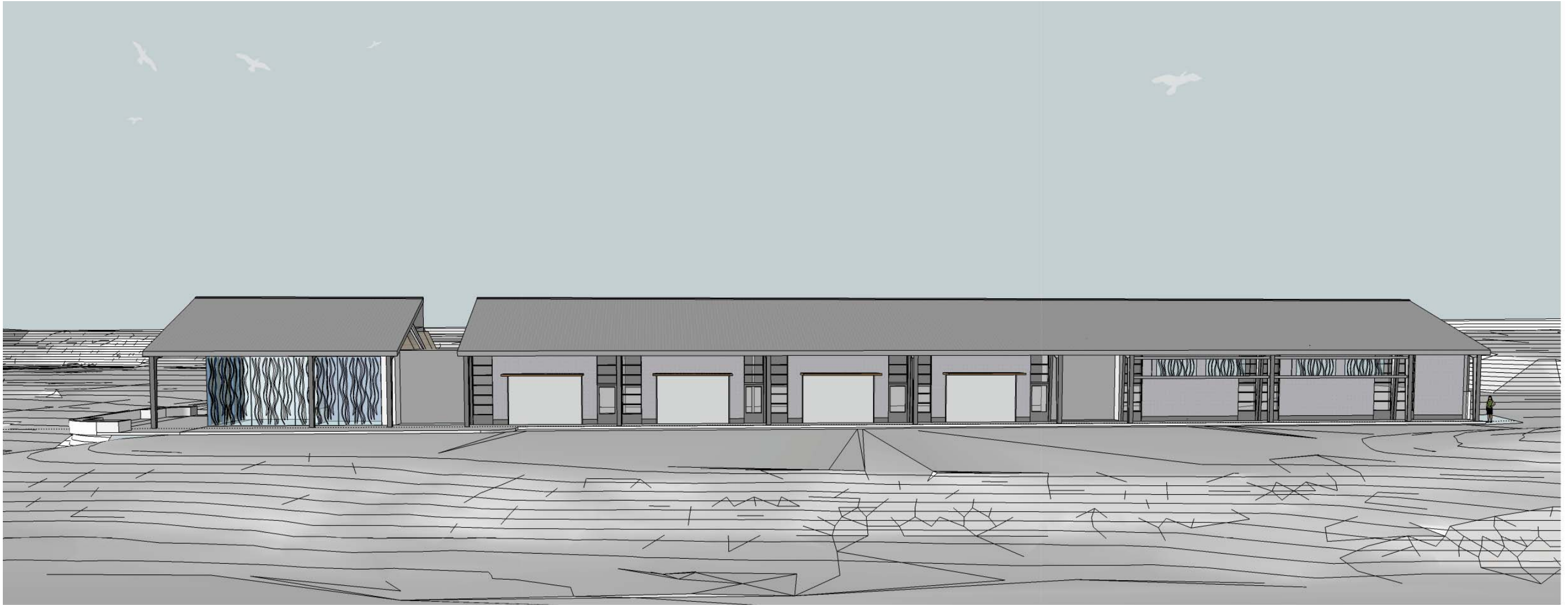
SECTION/DIAGRAMS



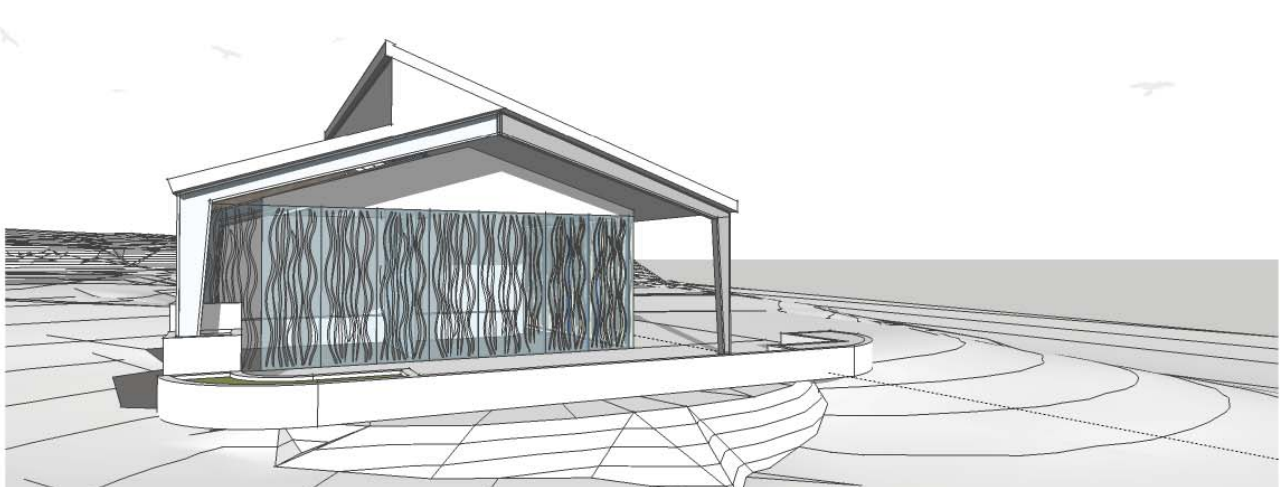
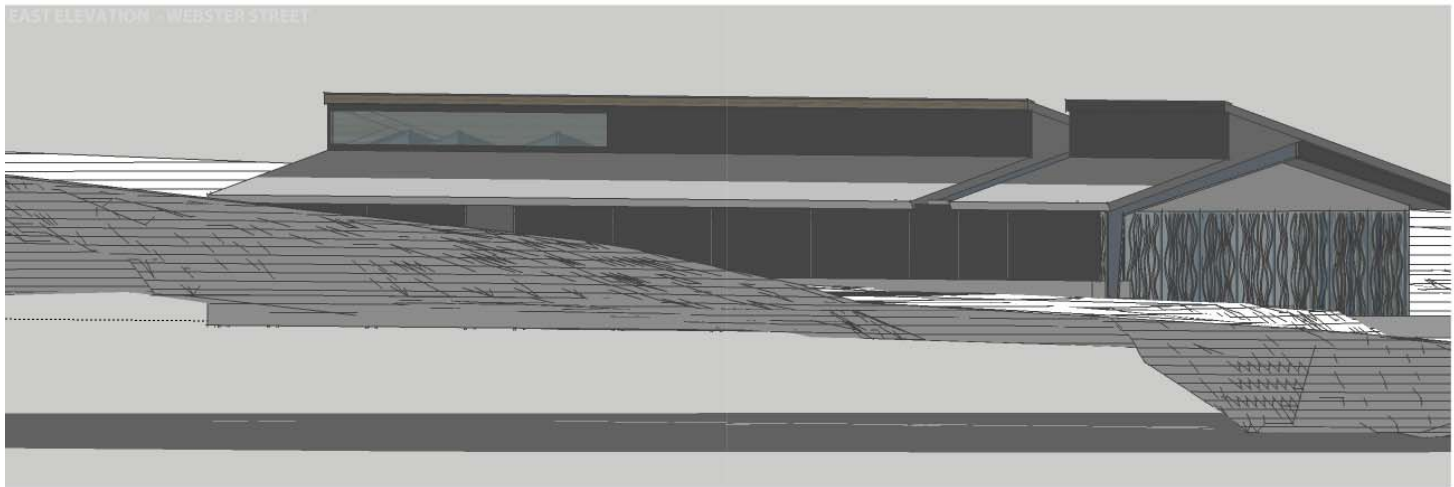
EXISTING FORM SKETCHES



SECTIONAL DIAGRAMS



SOUTH ELEVATION



AXONOMETRIC #2

