

**Clare Rojas**

**Chinatown Subway Mural**



14'-6"



34'-10"





The tiles will be chosen based on a wide spectrum of colors and tone, organized at random with neutral and white tones placed evenly throughout.



Swatches will be sourced from art and design institutions, individual designers, and fabric stores. Details from each swatch will be identified and cropped to diamond frame.



**Asian Art Museum**  
 Contact: Cathy Mano  
 Permission pending  
 Awaiting hi-res images \$

**MET / ArtRes**  
 Contact: Kerry Gaertner  
 Permission pending  
 Awaiting hi-res \$

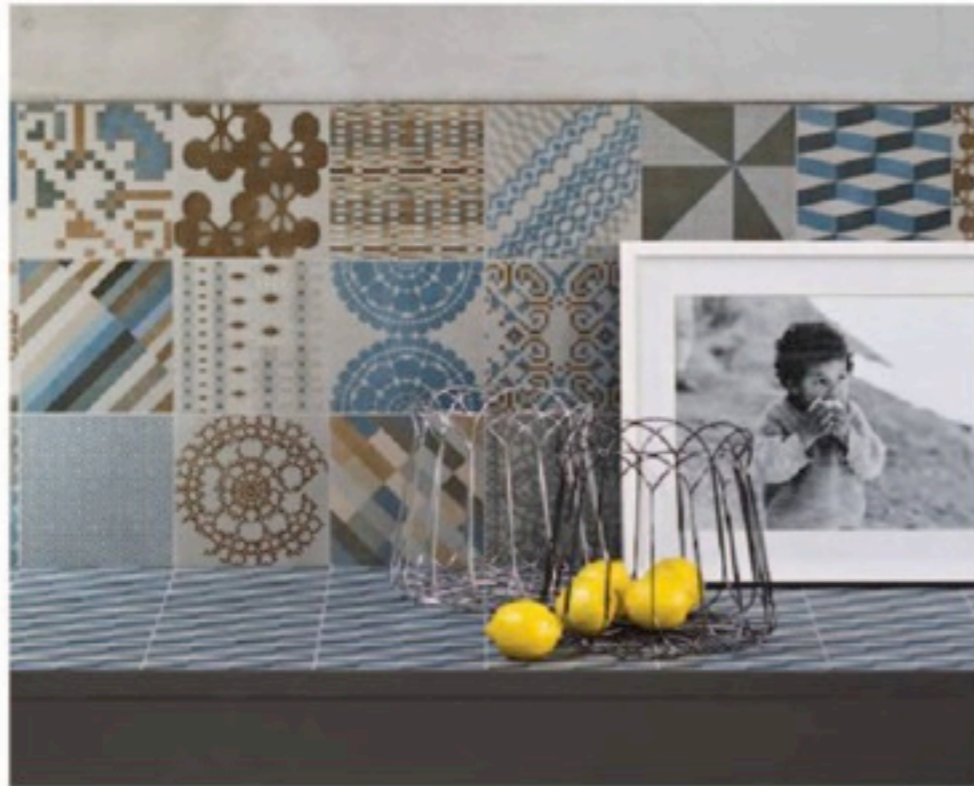
**RISD Museum**  
 Contact: Sionan Guenther  
 Approved

Florence Broadhurst  
 Awaiting response

Vivienne Tam  
 Awaiting response

**W&Q Design**  
 Siwen Huang  
 Qiongjie Yu  
 Awaiting response

**Peter Som Design**  
 Awaiting response



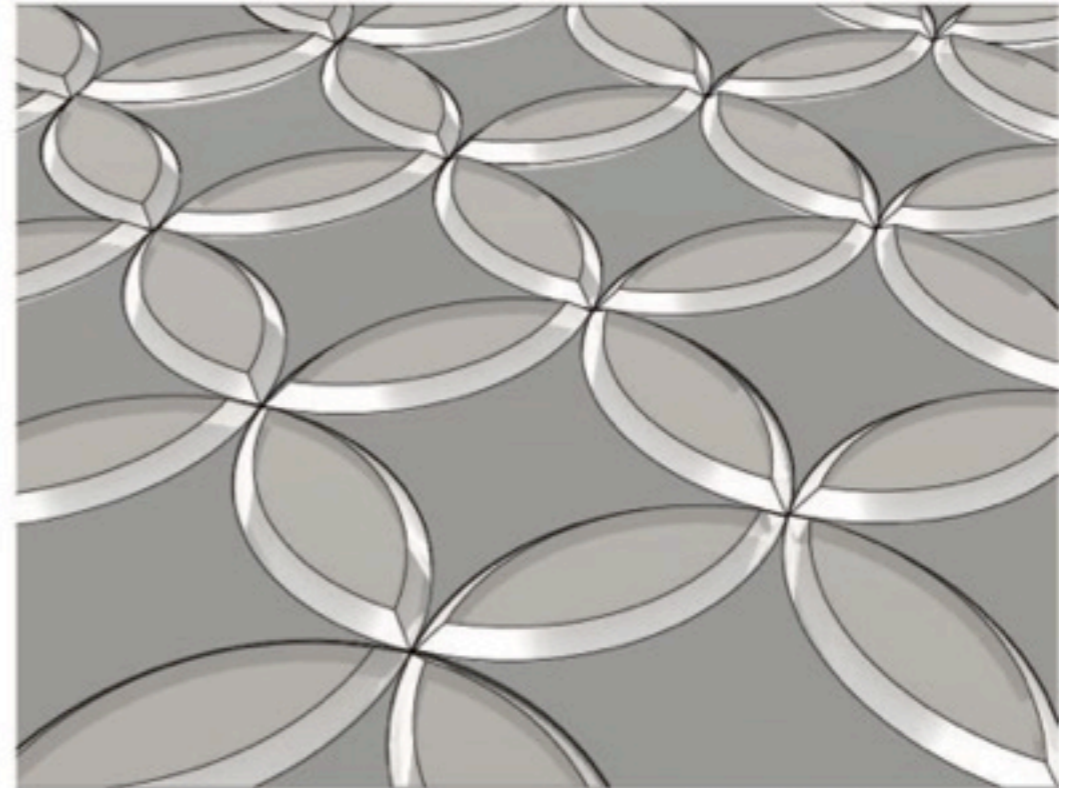
Digitally printed tiles are fabricated using high-resolution images, matching the original color and details with precision.



This process is incredibly durable and has been tested in outdoor environments, as well as in areas with high foot traffic.

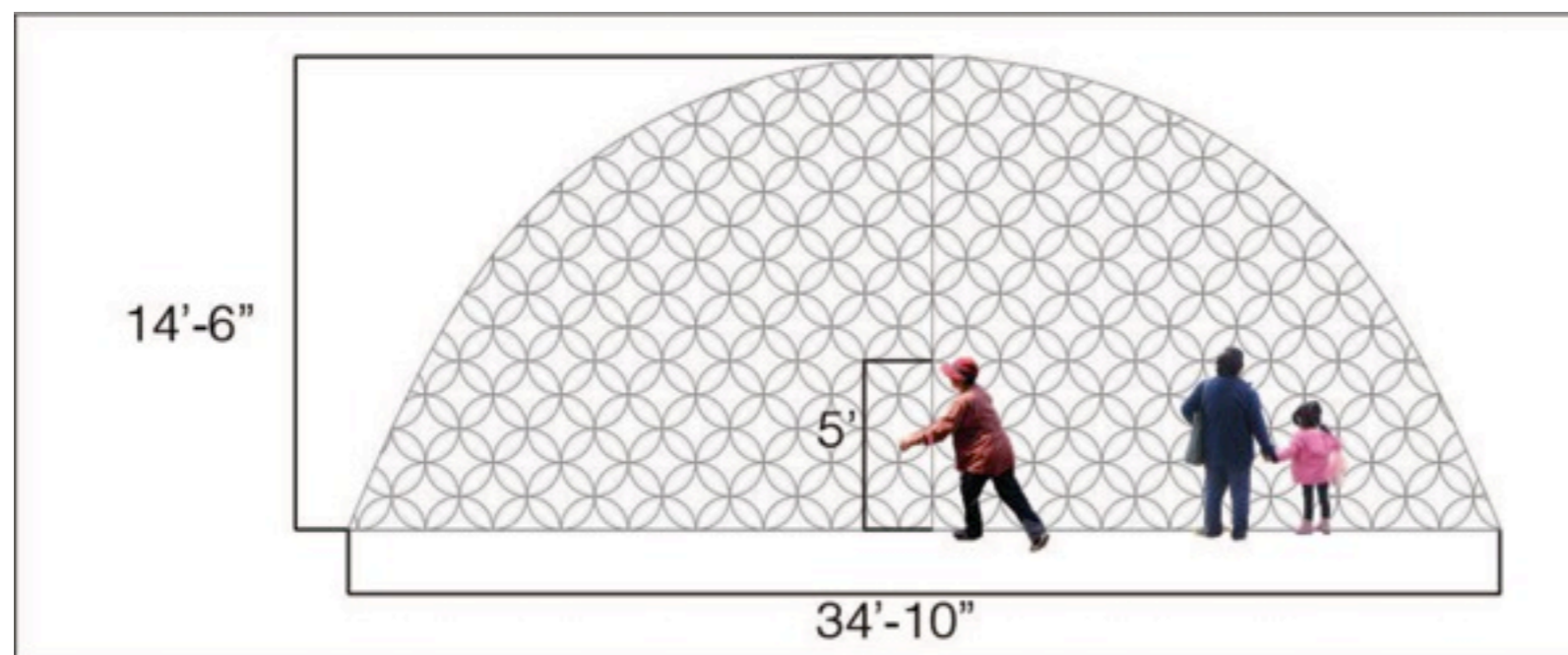


Ideally our tiles will be digitally printed and lasercut into form.

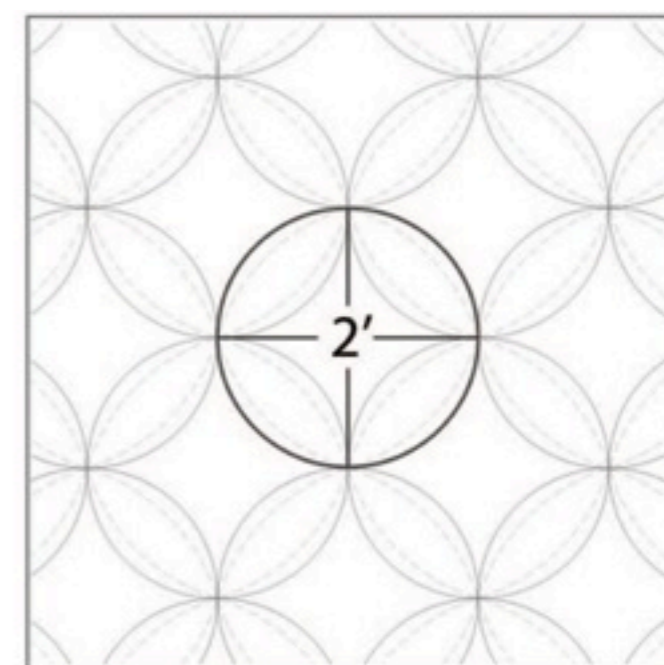


Tiles will be lasercut into the two components of a cathedral quilt pattern: the diamond and the elliptic form. The diamond tile will appear embedded within a circle and the surrounding elliptic forms will be raised with a beveled edge, adding a tactile element to the mural.





The mural reaches 14.5 feet tall and spans just over 34 feet wide. Subway commuters will take in their initial view from 10-15 feet away. The scale of each cathedral quilt pattern component is 2 feet in diameter. At this scale, the textile swatches are readable at a 15-foot distance, while allowing further visual discovery upon closer investigation.



Each circular component is 2 feet in diameter. The mural contains approximately 200 components taken from 75-100 textile swatches.



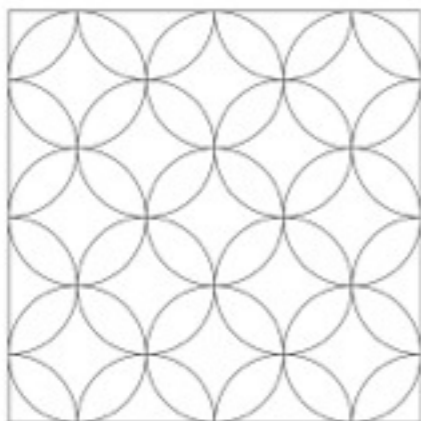
14'-6"



34'-10"



1'



2'

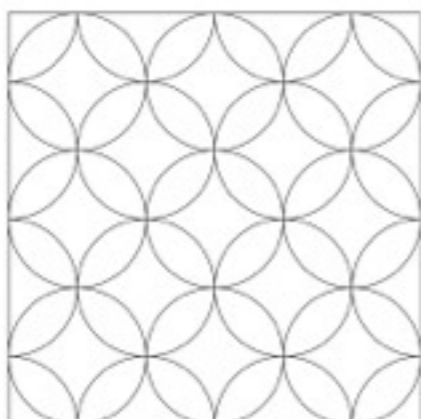


1.5" = 1'





1'

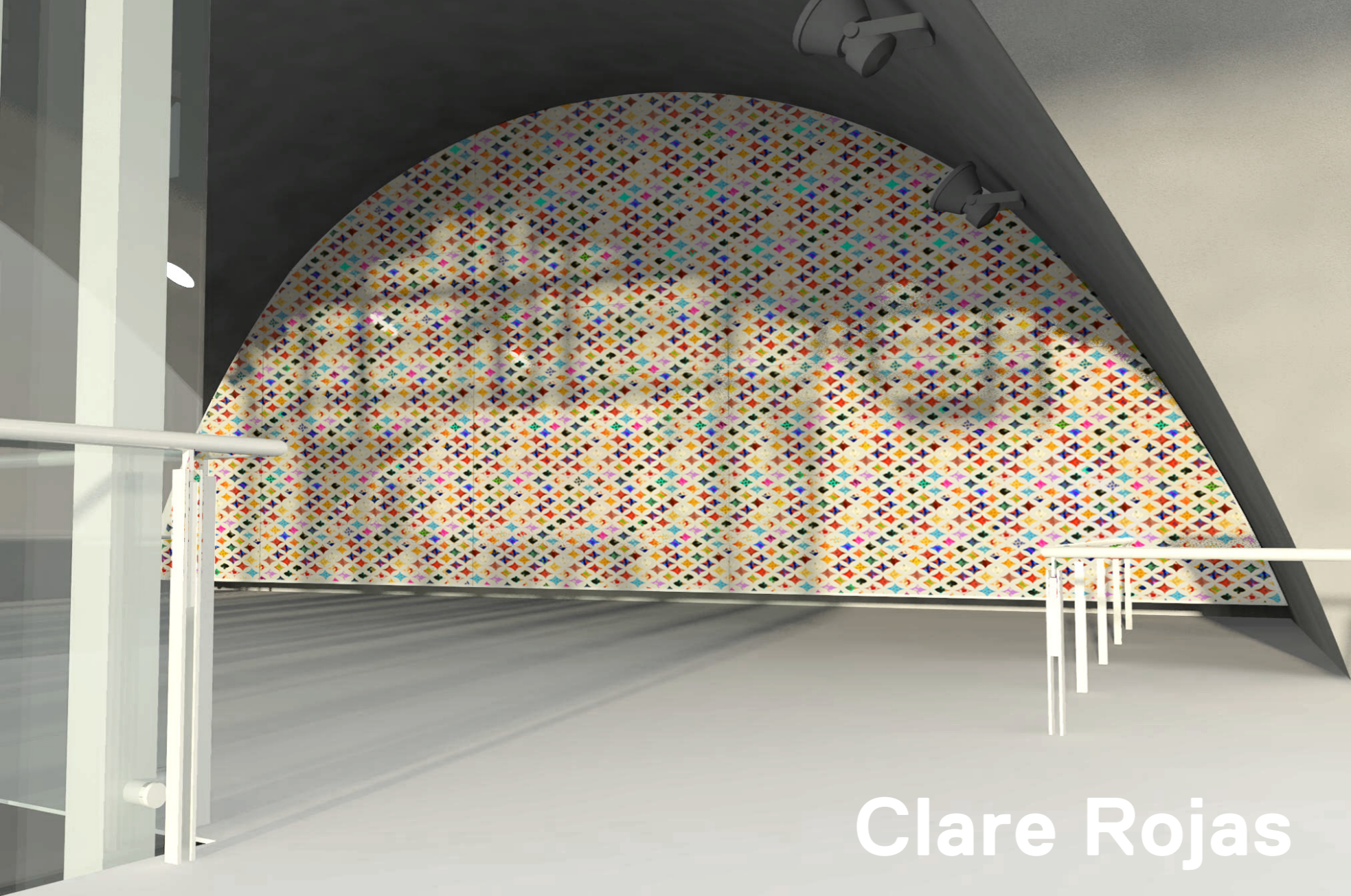


2'



1.5" = 1'





Clare Rojas

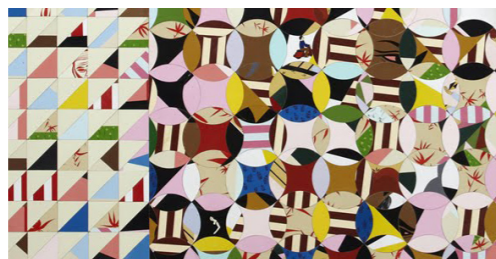
## A Sense of Community

Through carefully selected swatches of textiles, the cathedral quilt pattern illustrates a sense of community and unity in the Chinatown neighborhood. Each swatch depicts an image of an individual person within the community. This piece, connected to the larger pattern, demonstrates the individual's connection to the unified Chinese Culture as a whole. The textiles chosen will be of Chinese decent and culture.



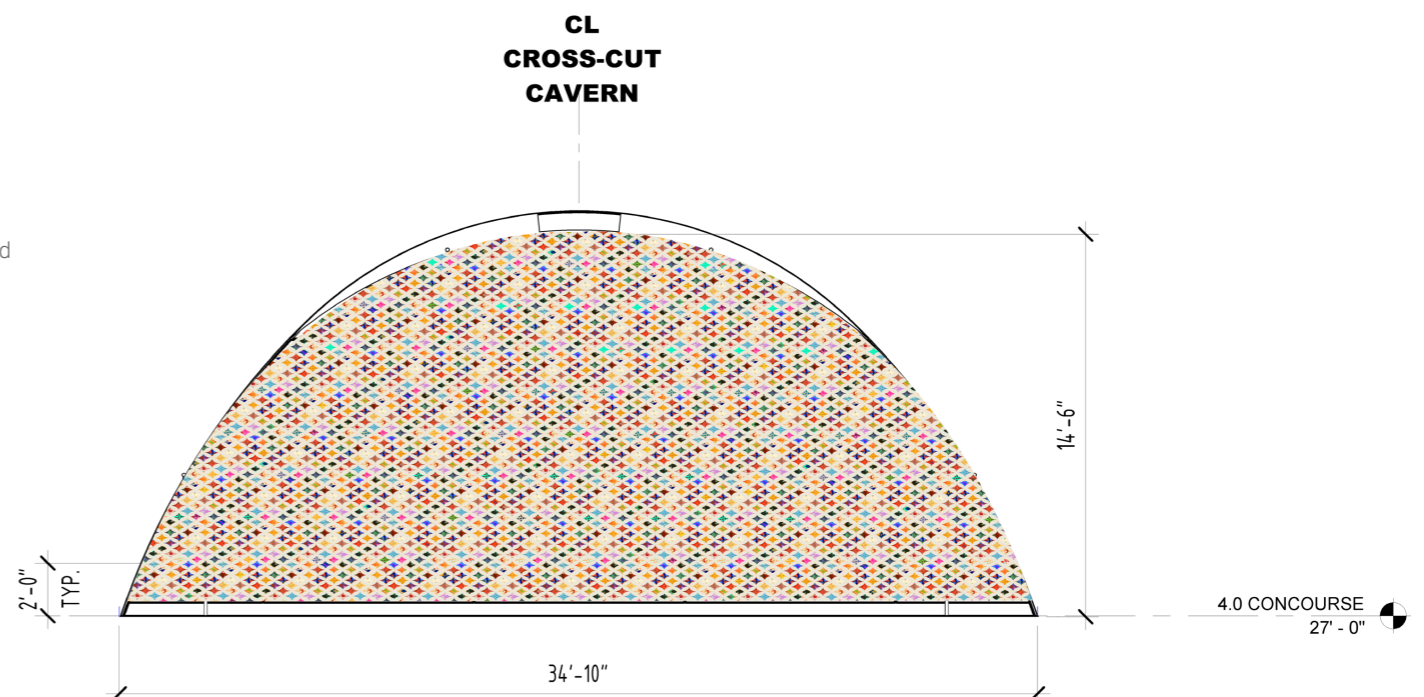
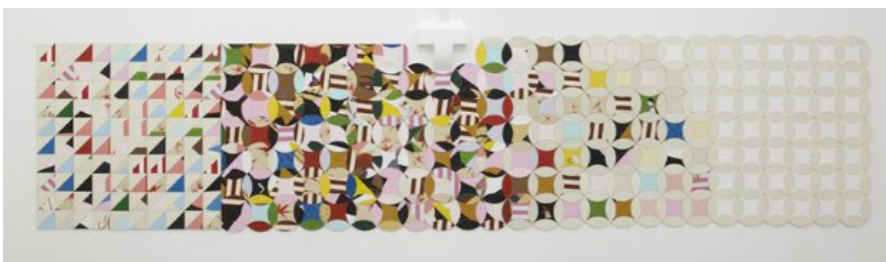
### Cathedral Quilt

This traditional quilting style uses various patchwork patterns that, when sewn together, give the effect of a stained glass window.

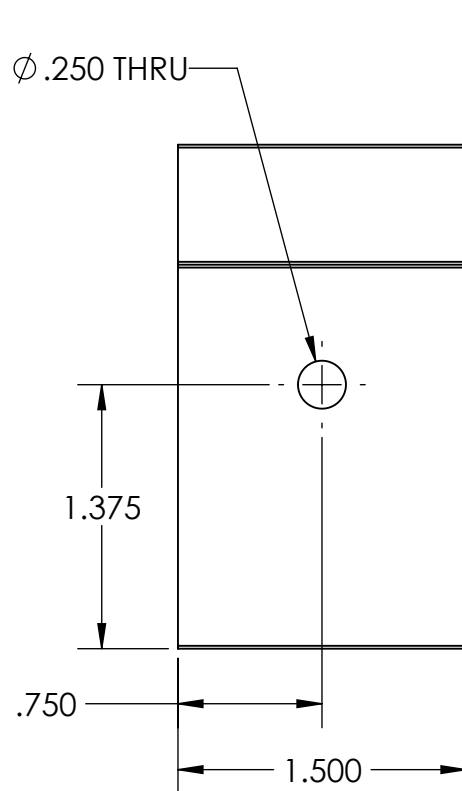


### Recent Work

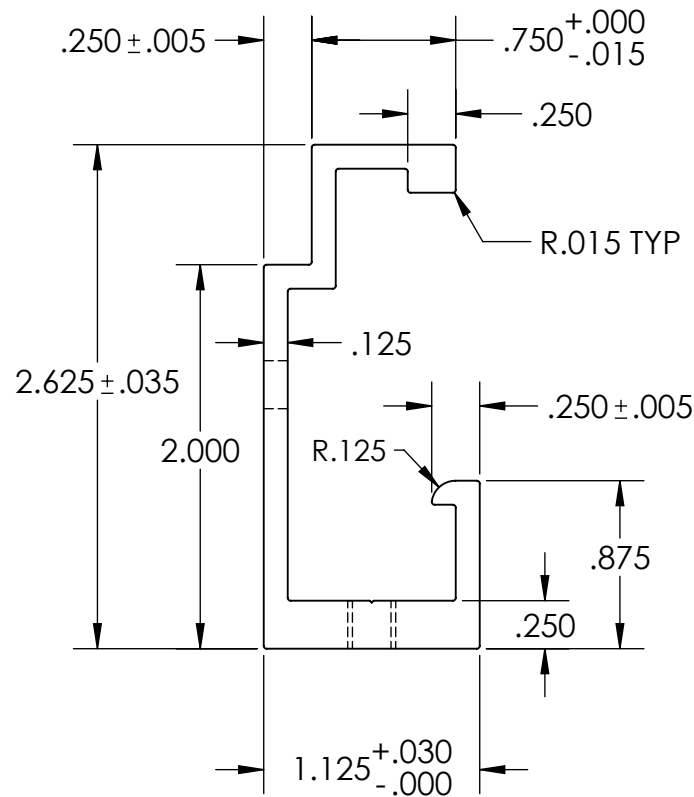
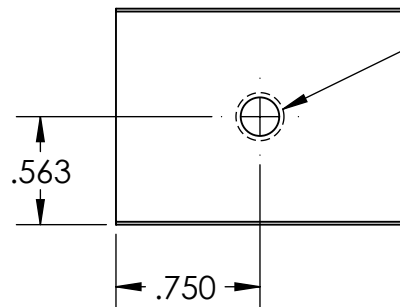
**We They, We They**  
Installation at the  
San Francisco  
Museum of Craft and  
Folk Art





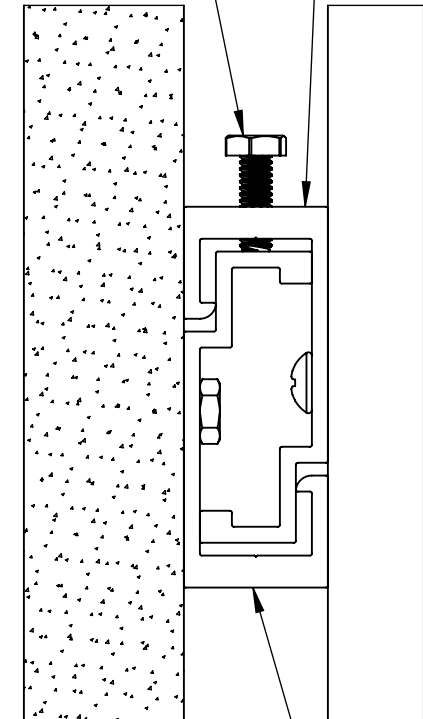


(Available in lengths up to 144")



1/4" x 20 Hex Bolt  
for Minor Height  
Adjustments

MFSTR-1125  
1.5" Clip



MFSTR-1125 Clip Engaged with  
MFSTR-1125 Continuous Length  
Scale 2:3

MFSTR-1125  
Continuous  
Length

**PROPRIETARY AND CONFIDENTIAL**

THE INFORMATION CONTAINED IN THIS  
DRAWING IS THE SOLE PROPERTY OF MONARCH  
METAL FABRICATION. ANY REPRODUCTION IN  
PART OR AS A WHOLE WITHOUT THE WRITTEN  
PERMISSION OF MONARCH METAL FABRICATION  
IS PROHIBITED.

MATERIAL

FINISH

DO NOT SCALE DRAWING

	NAME	DATE
DRAWN	EAH	10/11/13
CHECKED	CS	

COMMENTS:

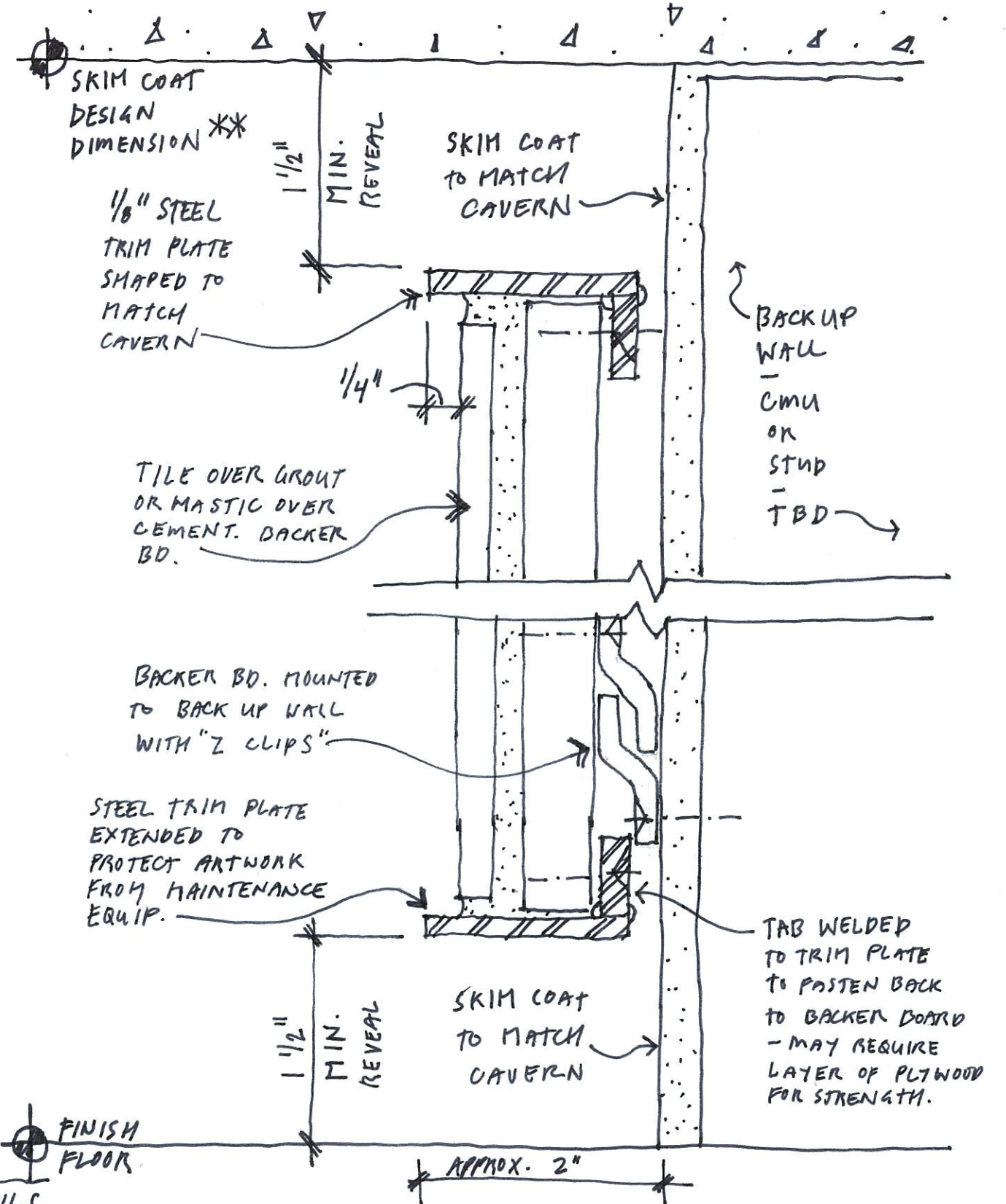


TITLE:

**MFSTR-1125 Clip**

SIZE	DWG. NO.	REV
<b>A</b>	MFSTR-1125	<b>A</b>
SCALE: 1:1	WEIGHT:	SHEET 1 OF 1

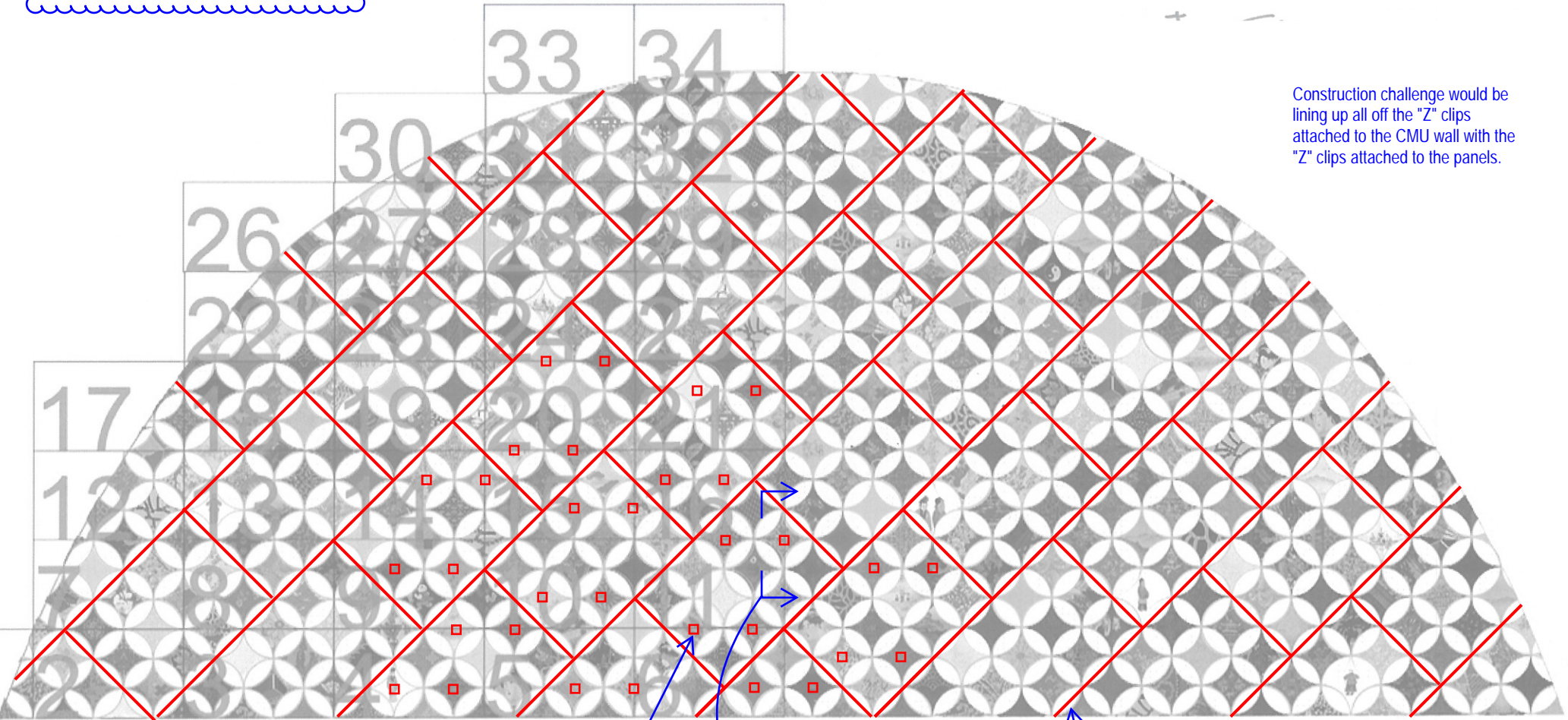
ALTERNATE A:



\*\* IF CAVERN  
DIMENSION VARIES,  
REVEAL DIMENSION  
WILL GROW.  
EQUALS REVEAL  
DIMENSION CAN  
BE MAINTAINED.

ROJAS MURAL  
EDGE/REVEAL DETAILS  
GENSLER - S.O.  
01/15/15

KPFF  
 For Reference ONLY  
 02.25.15  
 ANM



Construction challenge would be lining up all off the "Z" clips attached to the CMU wall with the "Z" clips attached to the panels.

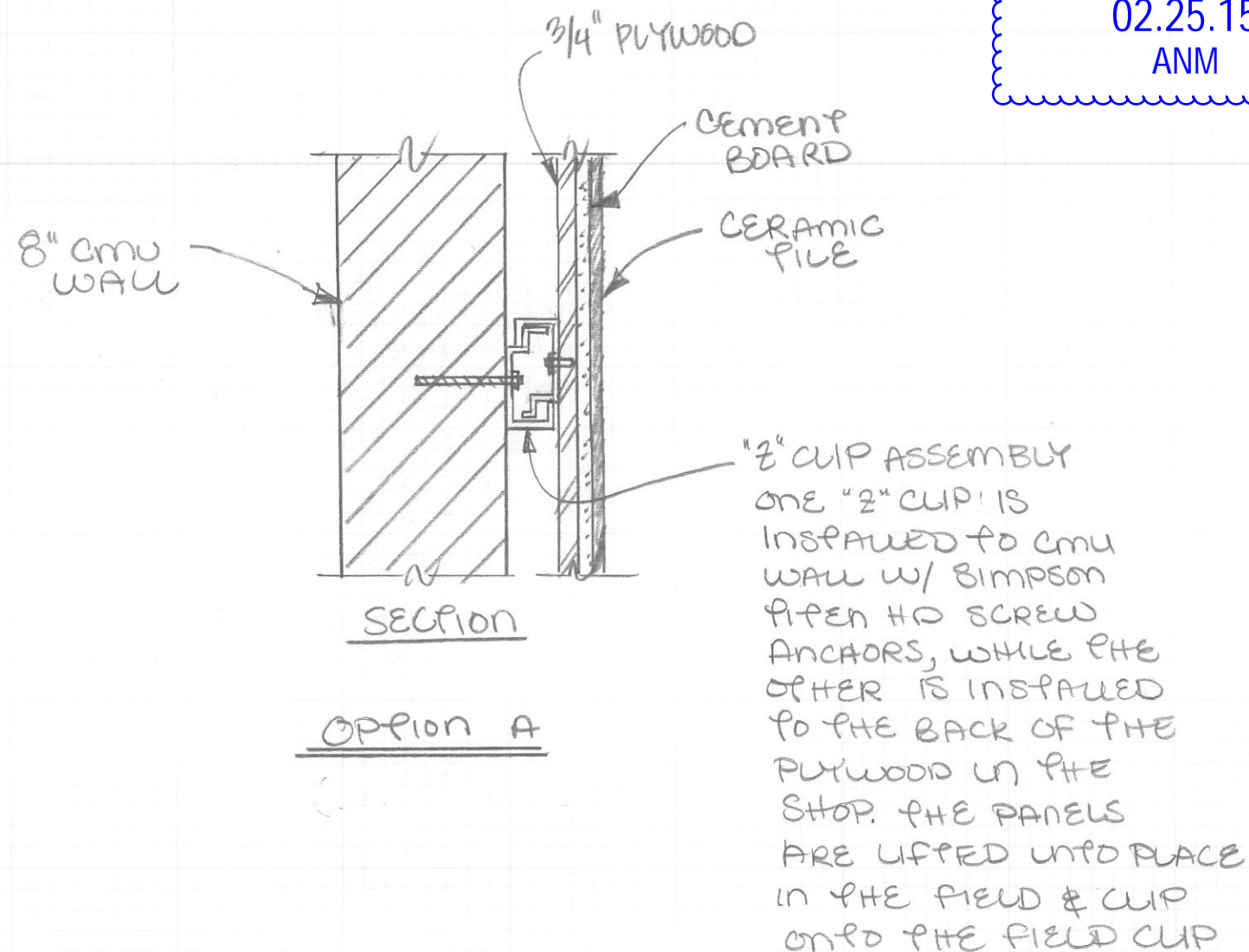
Option A

Each interior panel would be attached with 4 "Z" clips minimum. Each exterior panel would be attached with 2 "Z" clips at a minimum, typ.

See attached sketch SK-1 Option A

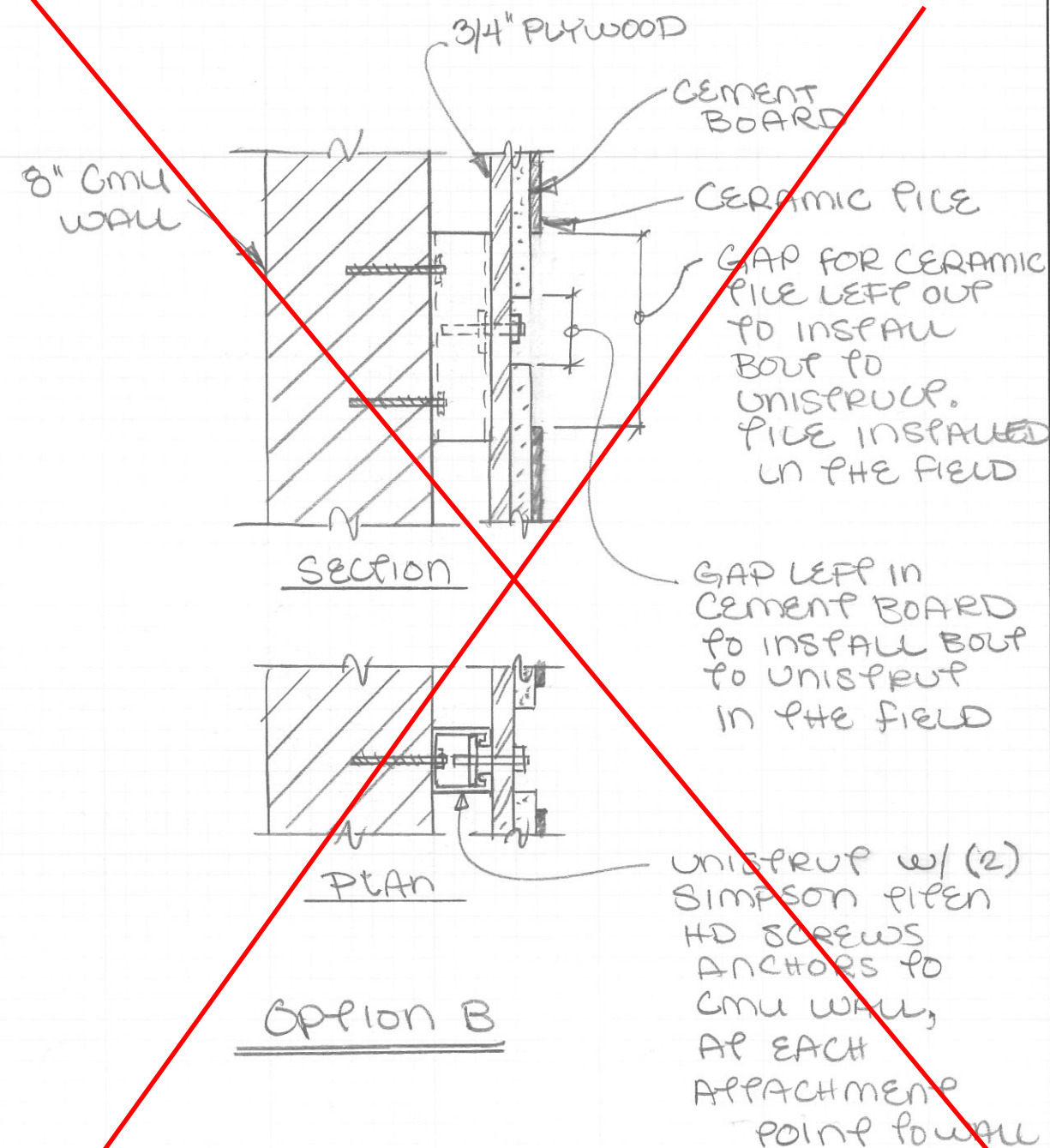
Panels size would be 4 tile pieces long by 3 tile pieces wide. Panels would be placed on a diagonal. This would allow for all the colorful mosaic pieces to be installed in the shop. The white tile pieces at the panel edges would need to be installed in the field.

KPFF  
 For Reference ONLY  
 02.25.15  
 ANM



NOTE:

SIMILAR DETAILS CAN BE PROVIDED FOR ATTACHMENT TO A METAL STUD WALL



PROJECT INFORMATION

DRAWINGS ISSUED FOR ARTWORK SUPPORT SYSTEM BID.  
NOT FOR SHOP FABRICATION OR INSTALLATION.

SUPPORT SYSTEM FABRICATOR TO COORDINATE  
INSTALLATION WITH SFAC, ARTIST, STATION ARCHITECT,  
AND GENERAL CONTRACTOR.

FINAL INSTALLATION DRAWINGS WILL BE ISSUED AFTER  
COORDINATION WITH SELECTED FABRICATOR.

SEPARATE BID INTO THE FOLLOWING LINE ITEMS:  
1 - FABRICATION OF PANELS AND METAL FINISH  
FRAME  
2 - SHOP INSTALLATION OF TILE TO FABRICATED  
PANELS, AND FIELD INSTALLATION OF BETWEEN-  
PANEL TILES (OPTIONAL)  
3 - SITE INSTALLATION OF PANELS TO WALL AND Z  
CLIP ATTACHMENT SYSTEM (OPTIONAL)  
4 - CONSTRUCTION OF CMU SUPPORT WALL WITHIN  
STATION (OPTIONAL)

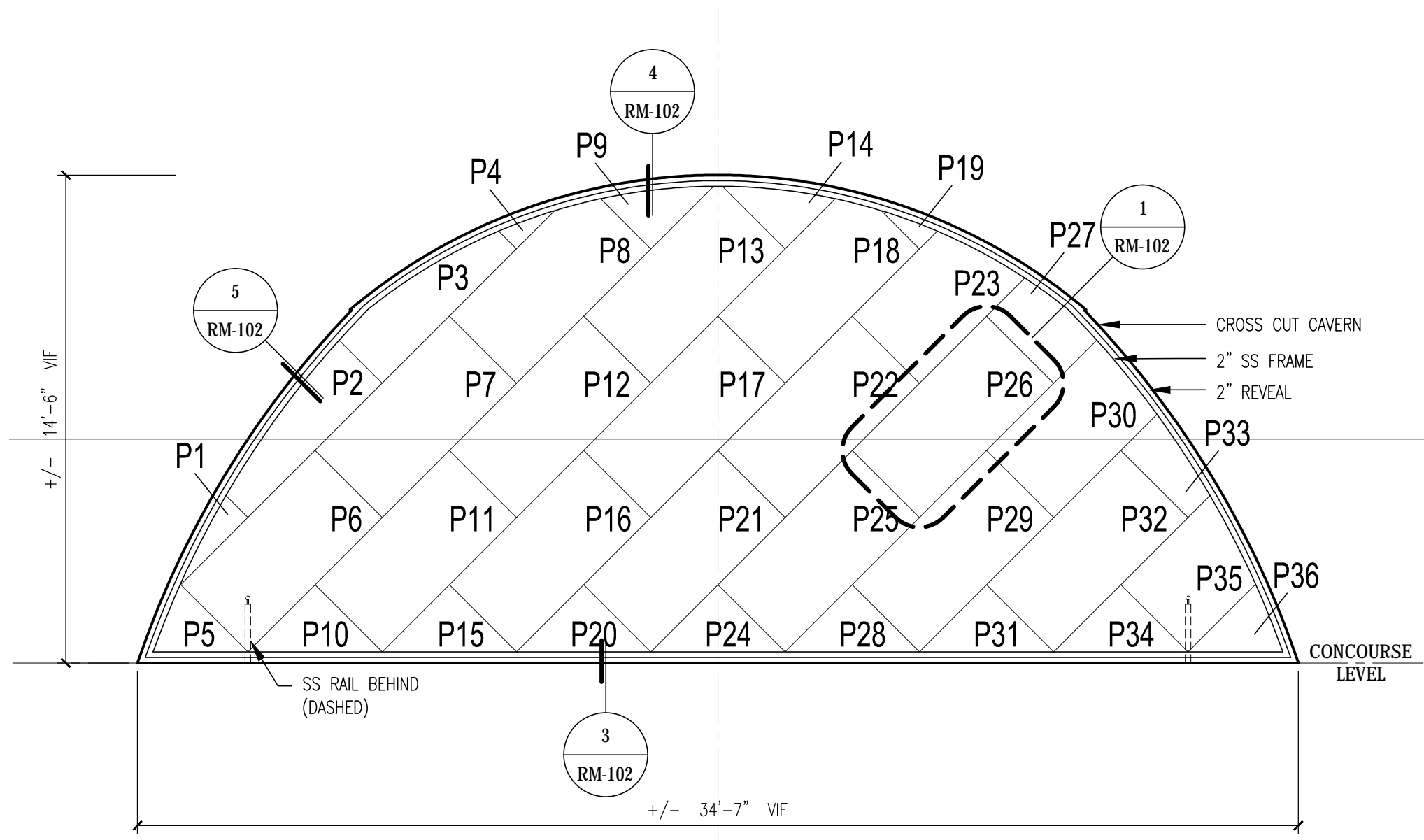
BIDDERS TO IDENTIFY ALL PROPOSED ALTERNATES AND  
EXCLUSIONS.

ALL TILE TO BE PROVIDED BY ARTIST.

FINISH MATERIALS TO BE COORDINATED WITH BASE STATION  
ARCHITECTURE AS NOTED.

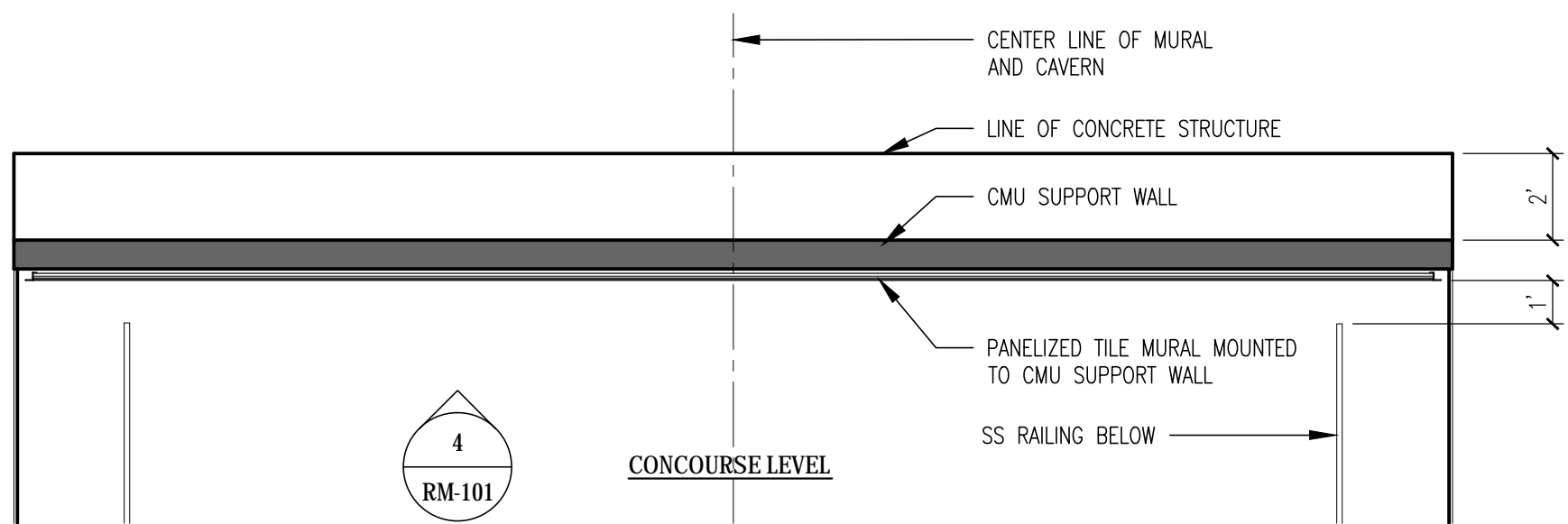
SHEET NOTES

1. X

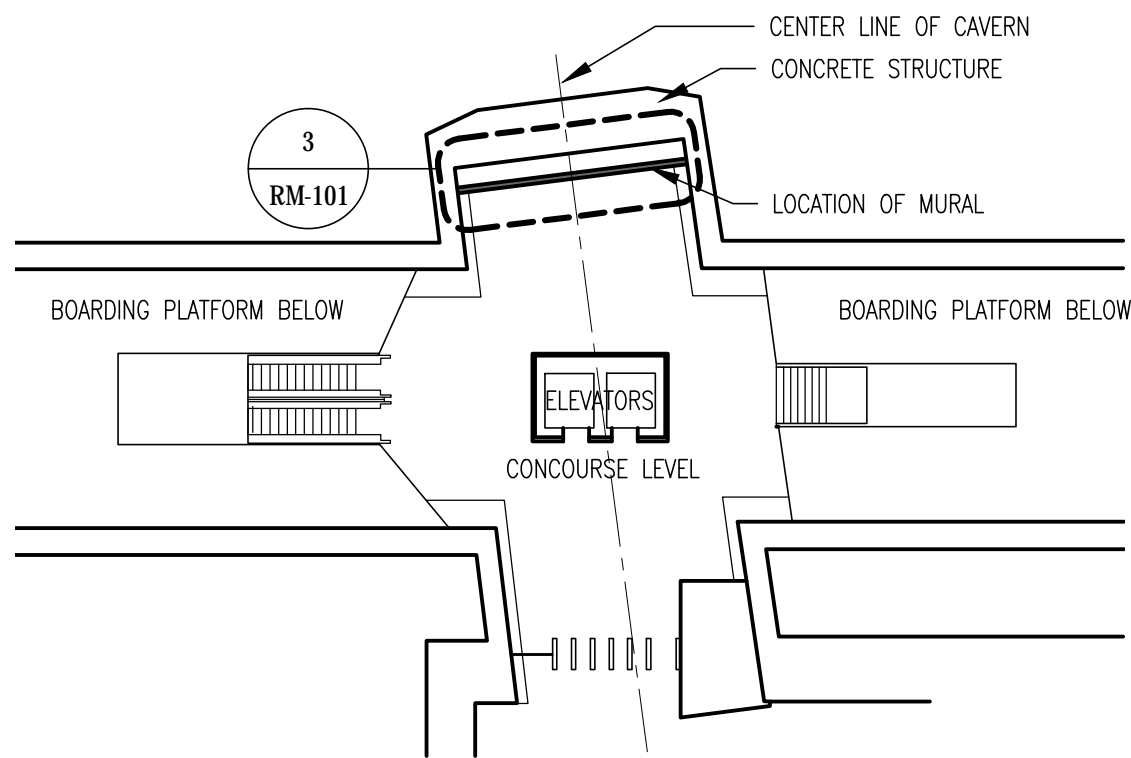


NOTE:  
SEE T/RM-103 FOR OVERALL MURAL  
GEOMETRY CONTROL ELEVATION.

**4 MURAL ELEVATION**  
1/4" = 1'-0"



**3 PLAN**  
1/4" = 1'-0"



**1 REFERENCE PLAN**  
NOT TO SCALE

\\gensler.ad\Projects\01\01\_0838,000\CAD\Work\General\ SFAC\_Rojas Mural.dwg  
21021 Tue Apr 07,2015 - 9:56 pm 101

TBD	TBD				
DATE	DESCRIPTION	REV. NO.	BY	CHECKED	APPROVED

**sfac**  
**Gensler**

2 Harrison Street,  
Suite 400  
San Francisco, CA 94105,  
USA  
  
Tel 415.433.3700  
Fax 415.838.4399

DESIGNED	S. ORGAIN
DRAWN	S. ORGAIN
CHECKED	P. KAEFER
REVIEWED	J. TUSING
RECOMMENDED	A. READ
APPROVED	J. WANG
DATE	TBD



CITY AND COUNTY OF SAN FRANCISCO  
**MUNICIPAL TRANSPORTATION AGENCY**

APPROVED

EXECUTIVE DIRECTOR/CEO

THIRD STREET LIGHT RAIL PROGRAM  
PHASE 2 – CENTRAL SUBWAY  
CHINATOWN STATION

ROJAS MURAL  
DESIGN INTENT DRAWINGS  
PROJECT NOTES, PLAN, AND ELEVATION

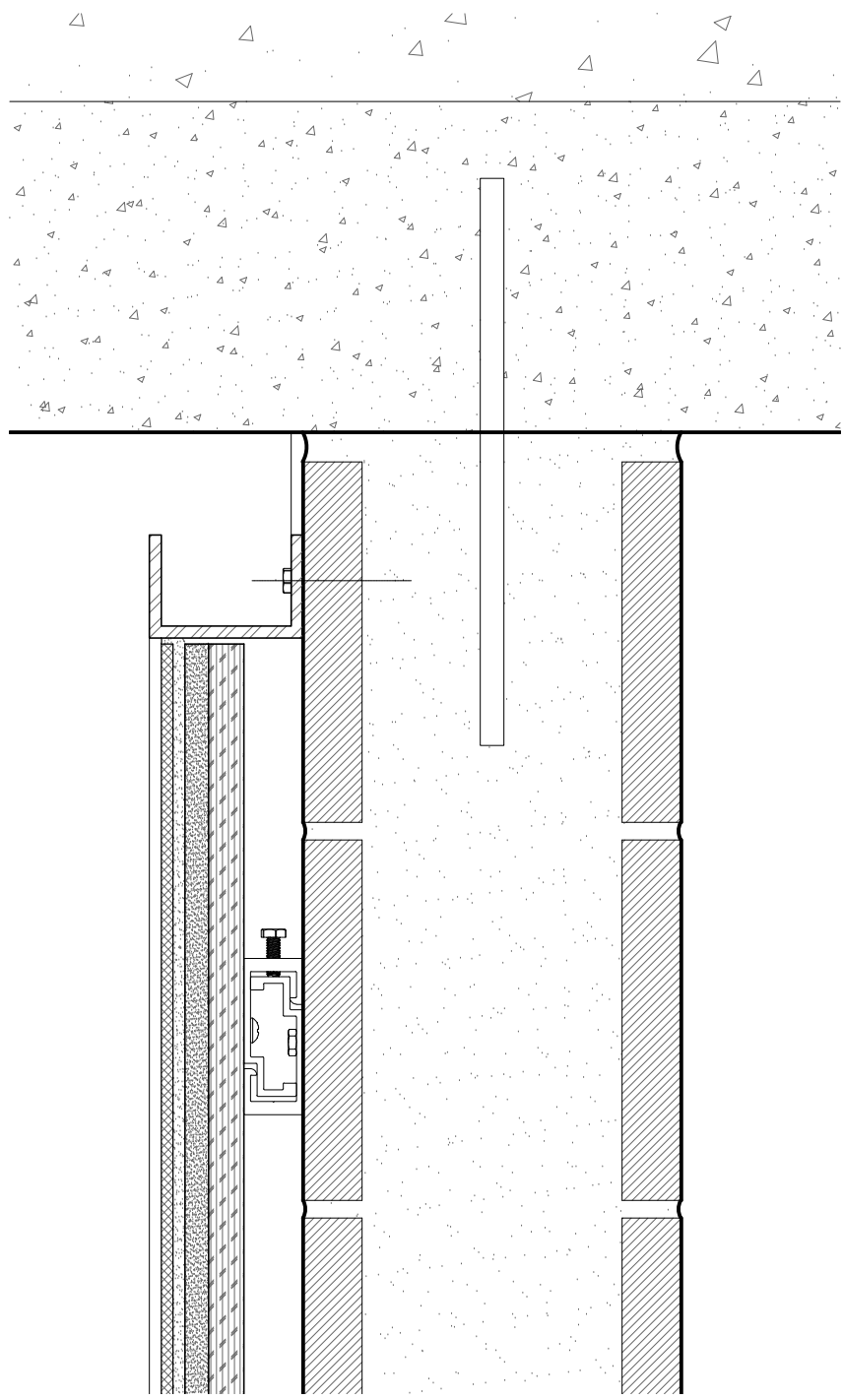
CONTRACT NO.  
**1255**

SFMTA CONTROL NO.

DRAWING NO.  
**RM-101**

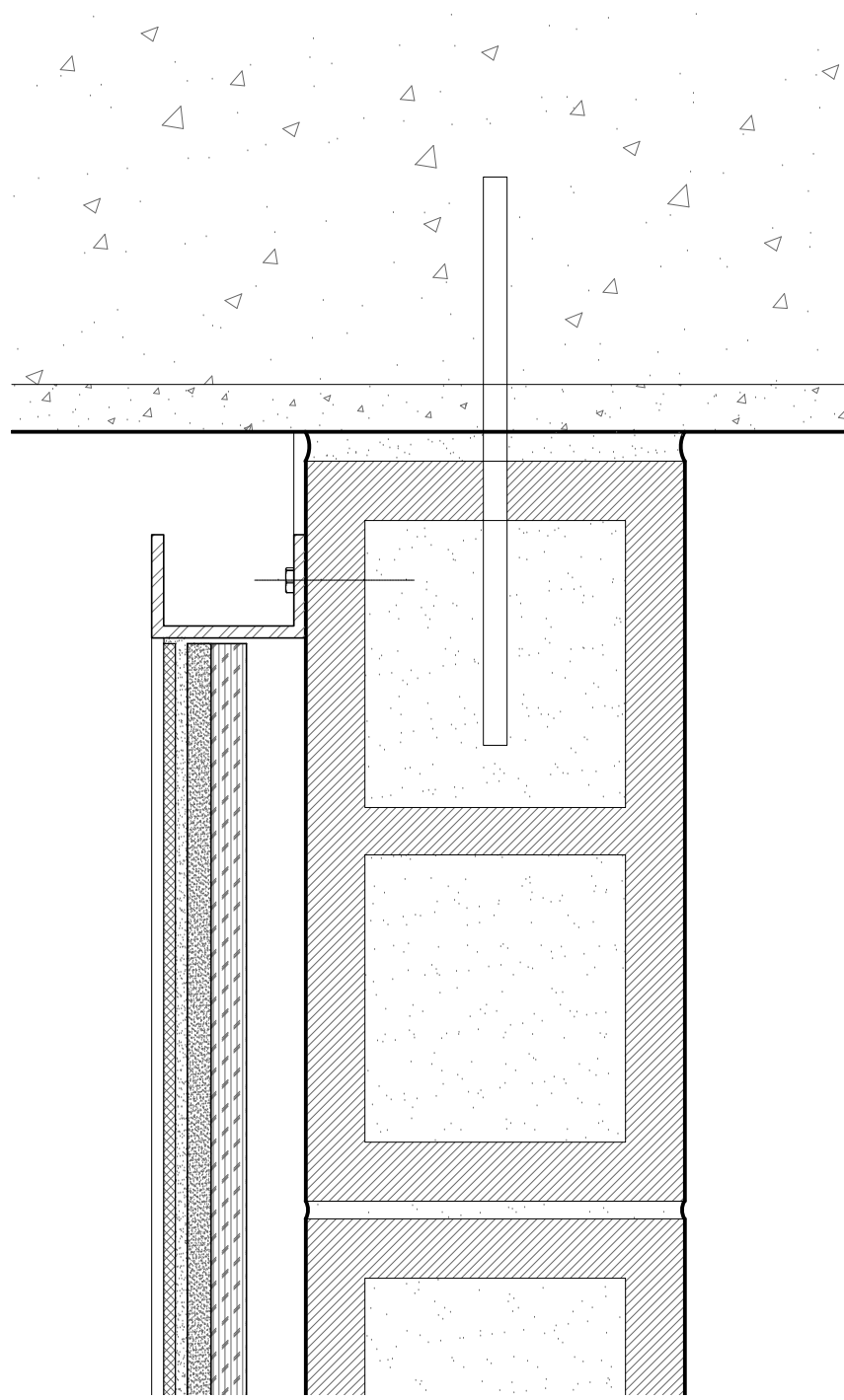
SHEET NO.

REVISION

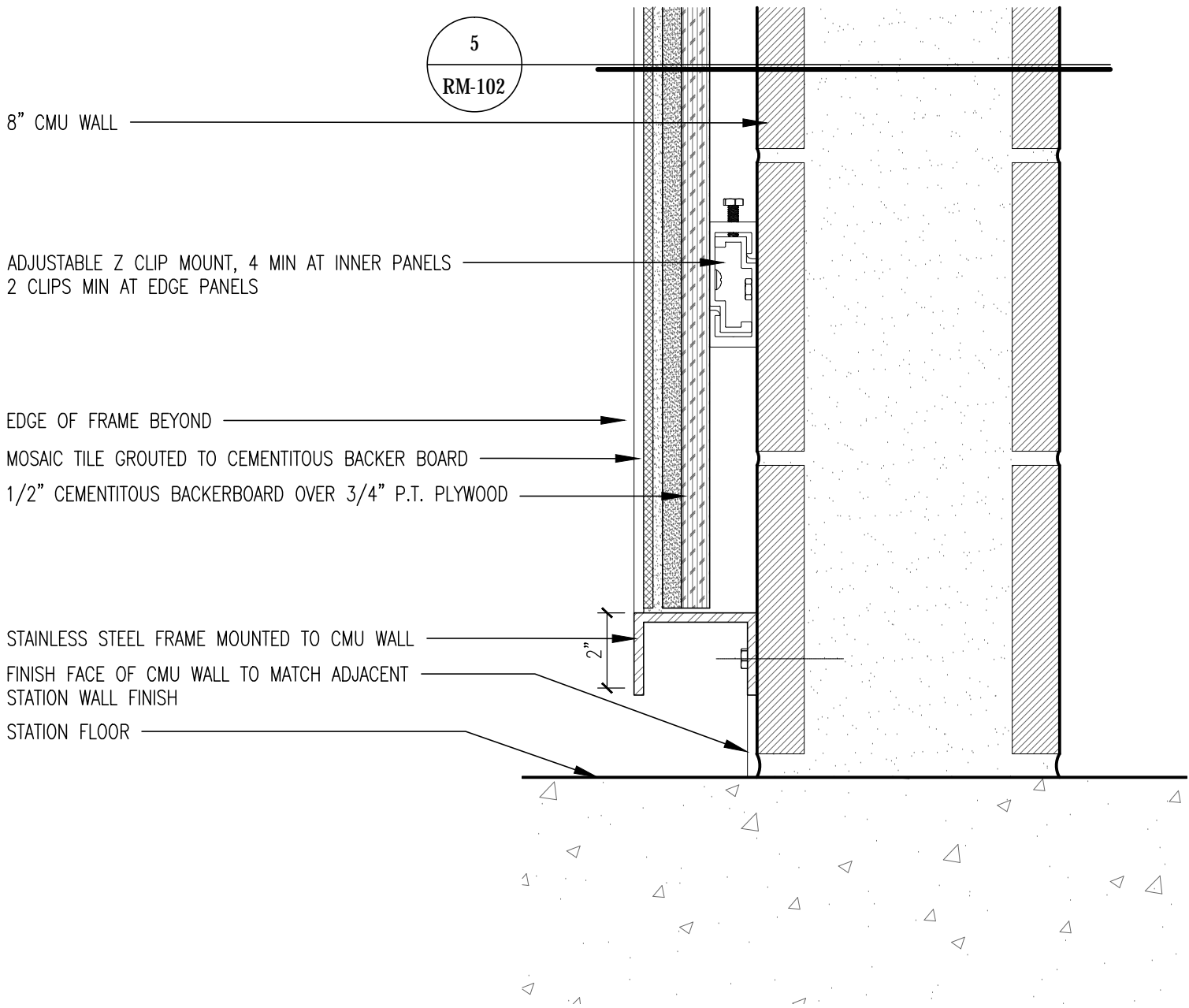


4 SECTION DETAIL AT CAVERN CEILING  
RM-102 3" = 1'-0"

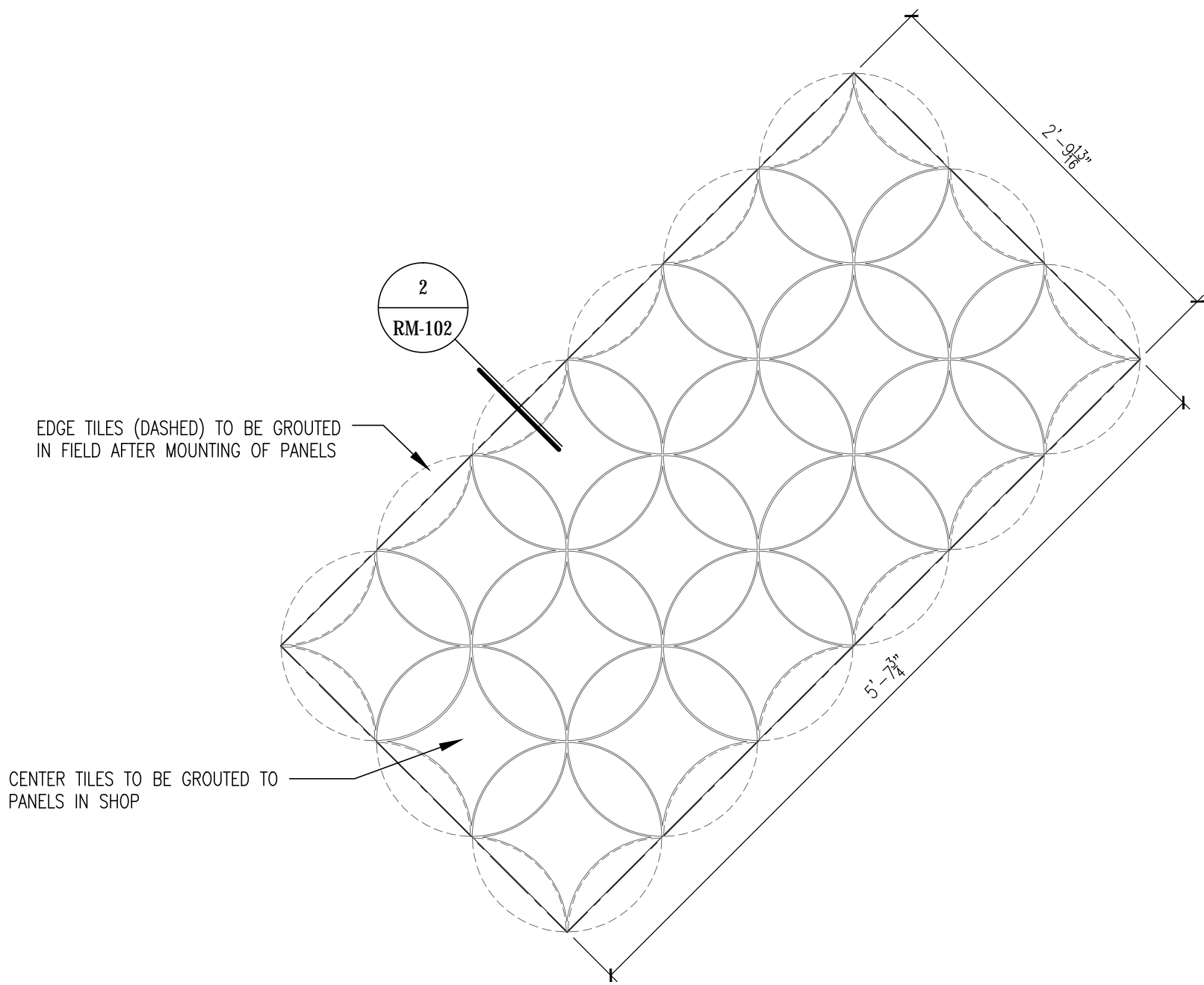
2 TYPICAL PANEL JOINT  
RM-102 3" = 1'-0"



5 PLAN DETAIL AT CAVERN WALL  
RM-102 3" = 1'-0"



3 SECTION DETAIL AT WALL BASE  
RM-102 3" = 1'-0"



1 TYPICAL PANEL ELEVATION  
RM-102 1" = 1'-0"

SHEET NOTES

1. X

\\gensler.ad\Projects\01\01\_0838,000\CAD\Work\General\ SFAC\_Rojas Mural.dwg  
21021 Tue Apr 07,2015 9:56 pm 102

DATE	DESCRIPTION	REV. NO.	BY	CHECKED	APPROVED
TBD	TBD				

**sfac**  
**Gensler**

2 Harrison Street,  
Suite 400  
San Francisco, CA 94105,  
USA  
Tel 415.433.3700  
Fax 415.836.4399

DESIGNED	S. ORGAIN
DRAWN	S. ORGAIN
CHECKED	P. KAEFER
REVIEWED	J. TUSING
RECOMMENDED	A. READ
APPROVED	J. WANG
DATE	TBD



CITY AND COUNTY OF SAN FRANCISCO  
**MUNICIPAL TRANSPORTATION AGENCY**

APPROVED

EXECUTIVE DIRECTOR/CEO

THIRD STREET LIGHT RAIL PROGRAM  
PHASE 2 – CENTRAL SUBWAY  
CHINATOWN STATION

ROJAS MURAL  
DESIGN INTENT DRAWINGS  
DETAILS, SPECIFICATIONS

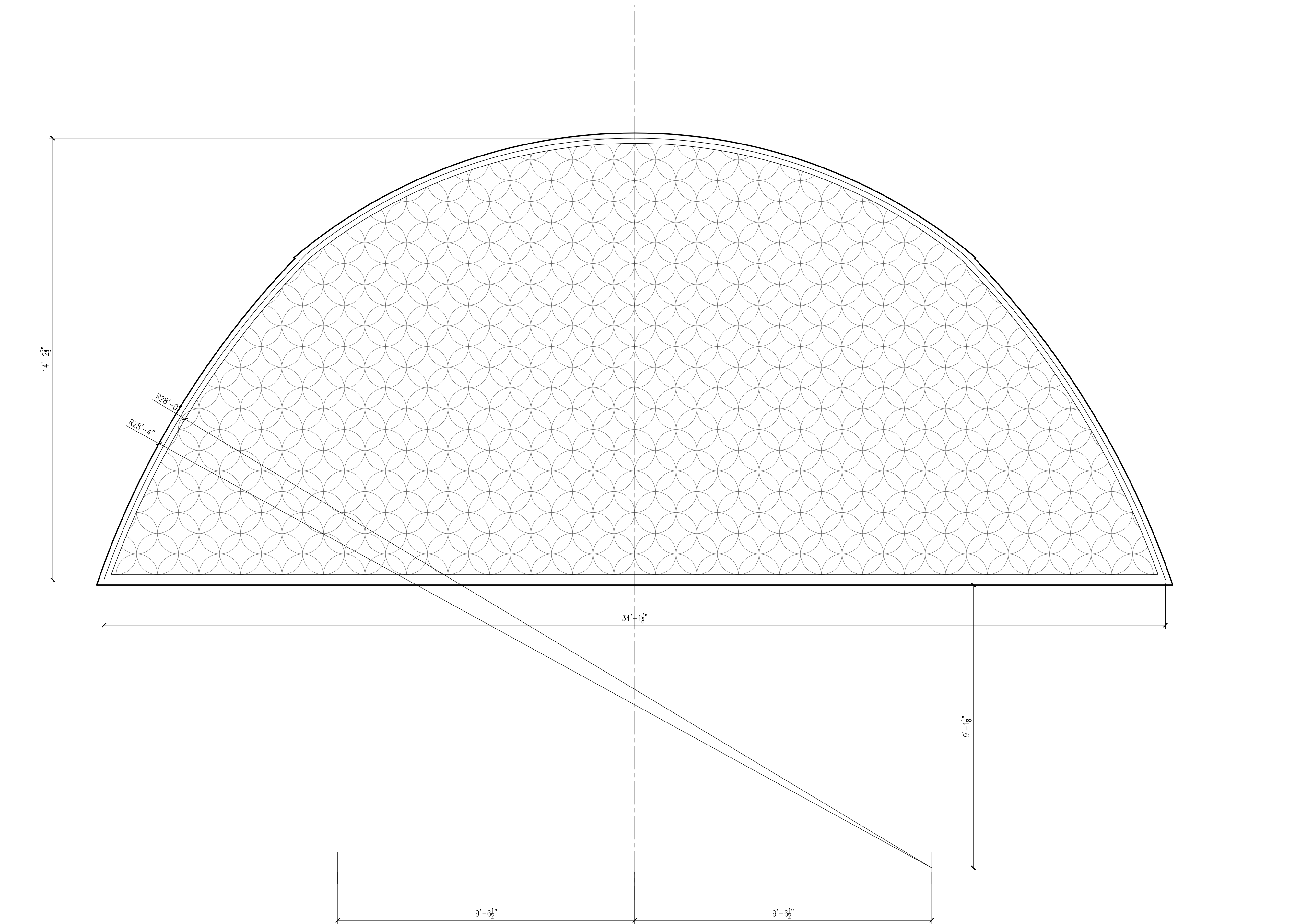
CONTRACT NO.  
1255

SFMTA CONTROL NO.

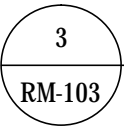
DRAWING NO.  
RM-102

SHEET NO.

REVISION



NOTE:  
SEE 4/RM-101 FOR FINISH ELEVATION.



GEOMETRY CONTROL ELEVATION

1/2" = 1'-0"

SHEET NOTES

1. X

\\gensler.ad\Projects\01\01,0838,000\CAD\Work\General\ SFAC\_Rojas Mural.dwg  
21021 Tue Apr 07,2015 - 9:55 pm 103

TBD	TBD				
DATE	DESCRIPTION	REV. NO.	BY	CHECKED	APPROVED



2 Harrison Street,  
Suite 400  
San Francisco, CA 94105,  
USA

Tel 415.433.3700  
Fax 415.838.4399

DESIGNED	S. ORGAIN
DRAWN	S. ORGAIN
CHECKED	P. KAEFER
REVIEWED	J. TUSING
RECOMMENDED	A. READ
APPROVED	J. WANG
DATE	TBD



CITY AND COUNTY OF SAN FRANCISCO  
MUNICIPAL TRANSPORTATION AGENCY

APPROVED

EXECUTIVE DIRECTOR/CEO

THIRD STREET LIGHT RAIL PROGRAM  
PHASE 2 – CENTRAL SUBWAY  
CHINATOWN STATION

ROJAS MURAL  
DESIGN INTENT DRAWINGS  
GEOMETRY CONTROL ELEVATION

CONTRACT NO.  
1255

SFMTA CONTROL NO.

DRAWING NO.  
RM-103

SHEET NO.

REVISION

