

SFMTA | OPERATOR CONVENIENCE FACILITIES

1. 7th Ave and Fulton 2. 48th Ave and Rivera Ave

CIVIC DESIGN REVIEW PHASE II & III
June 20, 2016



SFMTA

Municipal Transportation Agency



DESIGN CRITERIA

TEMPORARY / PREFABRICATED FACILITIES

- A. ADA Accessible
- B. Dependent on service volume at specific locations
- C. Direct connection to city utilities with the possibility of relocation if terminal location changes

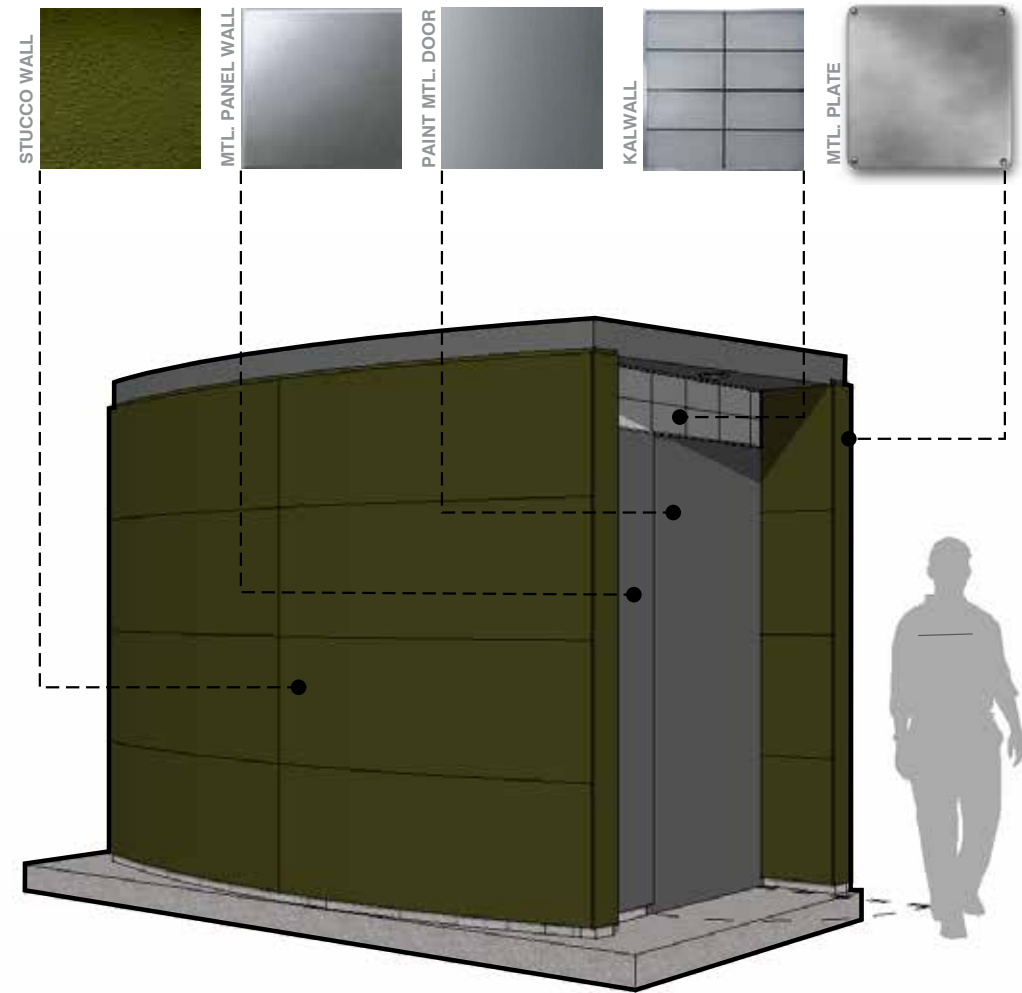
NEW LOCATIONS

- 1. 7th Ave and Fulton
- 2. 48th Ave and Rivera Avenue



BASIC MODULE DESIGN

MATERIALS & COLOR SCHEME



SINGLE OCCUPANCY - BASIC MODULE

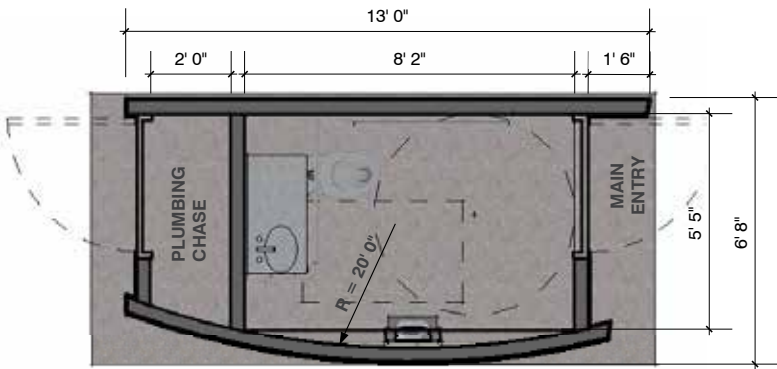


SINGLE OCCUPANCY - BASIC MODULE REAR VIEW

DESIGN CRITERIA

TEMPORARY/ PREFABRICATED FACILITIES

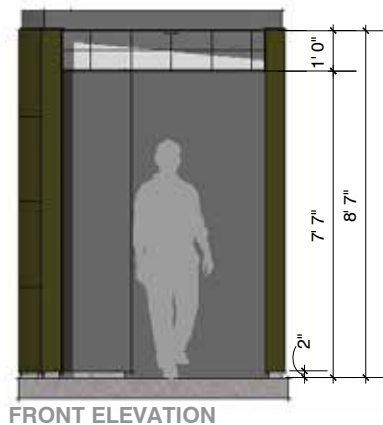
- WALLS:** C.M.U. WALLS WITH CEMENT PLASTER. PAINT & ANTIGRAFFITI COATING.
- INTERIOR FINISH:** EXPOSED CMU W/ EPOXY PAINT.
- DOORS:** GALVANIZED METAL DOORS, PAINTED.
- NATURAL ILLUMINATION:** KALWALL.
- VENTILATION:** METAL LOUVERS & MECHANICAL EXHAUST FAN.
- LIGHTING:** INTERIOR - MOTION ACTIVATED LIGHT, EXTERIOR - RECESSED CEILING LIGHT.
- FLOOR:** EXPOSED CONCRETE.



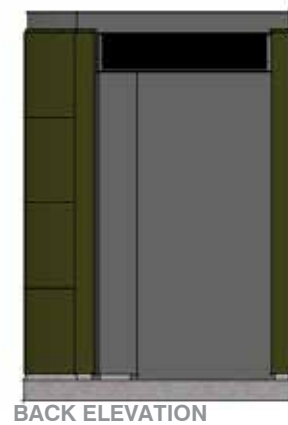
FLOOR PLAN - SINGLE OCCUPANCY- BASIC MODULE



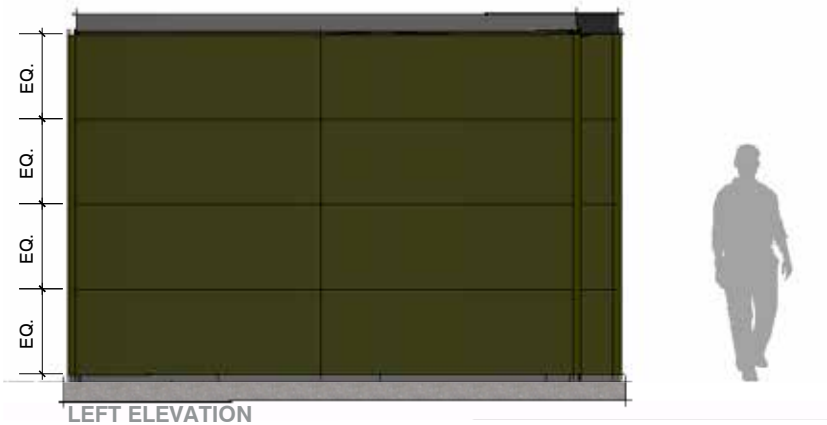
RIGHT ELEVATION



FRONT ELEVATION



BACK ELEVATION

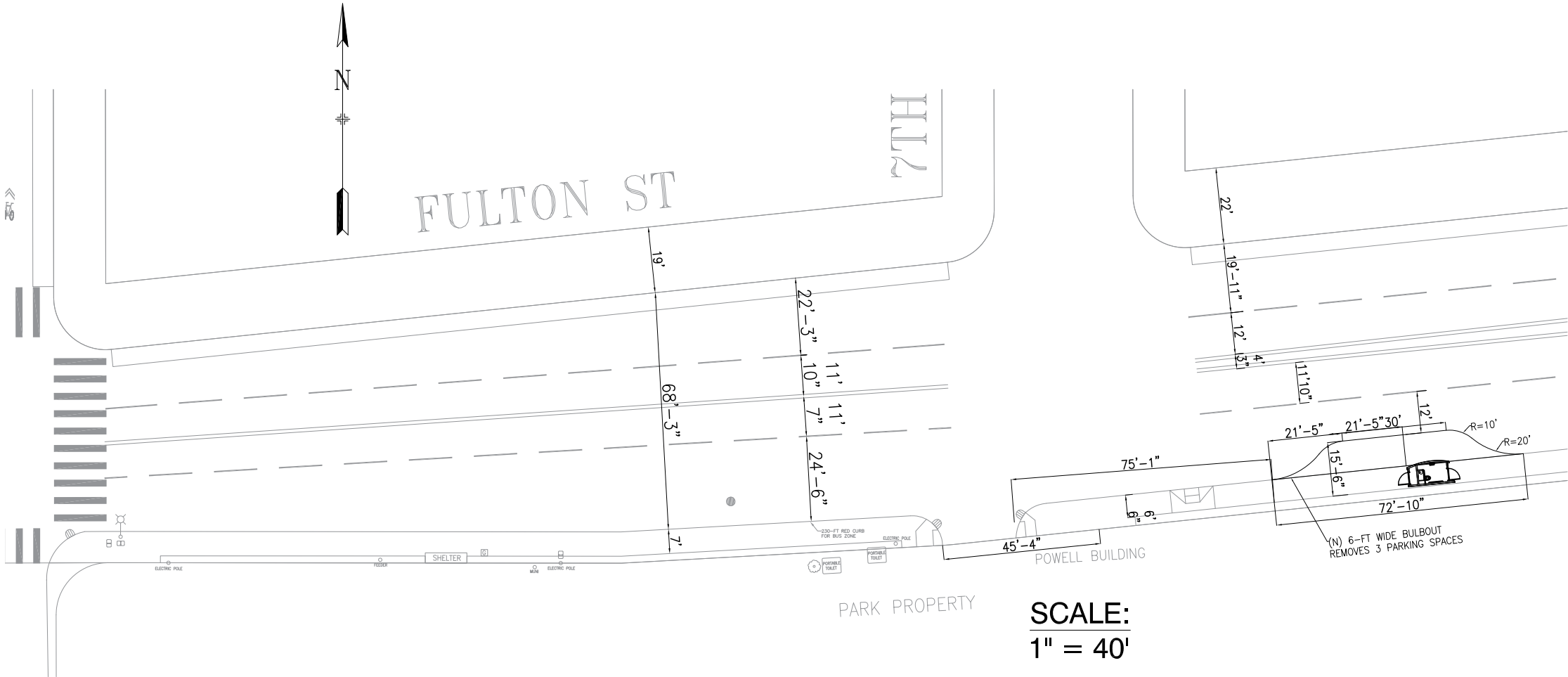
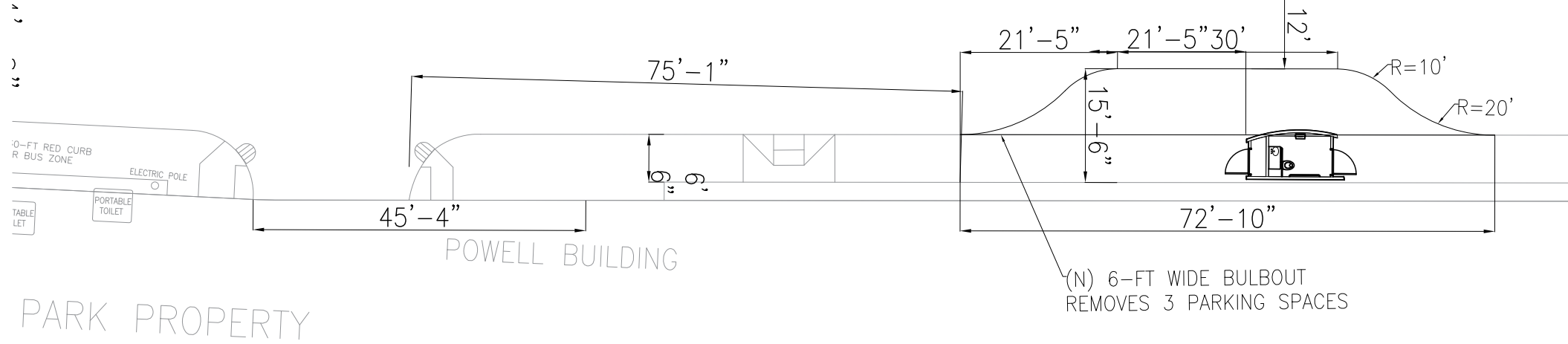


LEFT ELEVATION

7TH AVE AND FULTON | SITE MAP & SITE PHOTOS



SCALE:
1" = 20'



NOTES:

- BULB AREA: 291.7 square feet
- 2' GUTTER AREA: 155.4 square feet
- RELOCATED INLETS: 0
- RED CURB PAINT: 30 linear feet
- NO PARKING SIGNS: 1

CONCEPTUAL DESIGN
NOT FOR CONSTRUCTION



48TH AVE AND RIVERA AVE. | SITE MAP & SITE PHOTOS





