

SFMTA | OPERATOR CONVENIENCE FACILITIES

PARKRIDGE DRIVE & BURNETT AVENUE

CIVIC DESIGN REVIEW PHASES II & III
AUGUST 2015



SFMTA

Municipal Transportation Agency



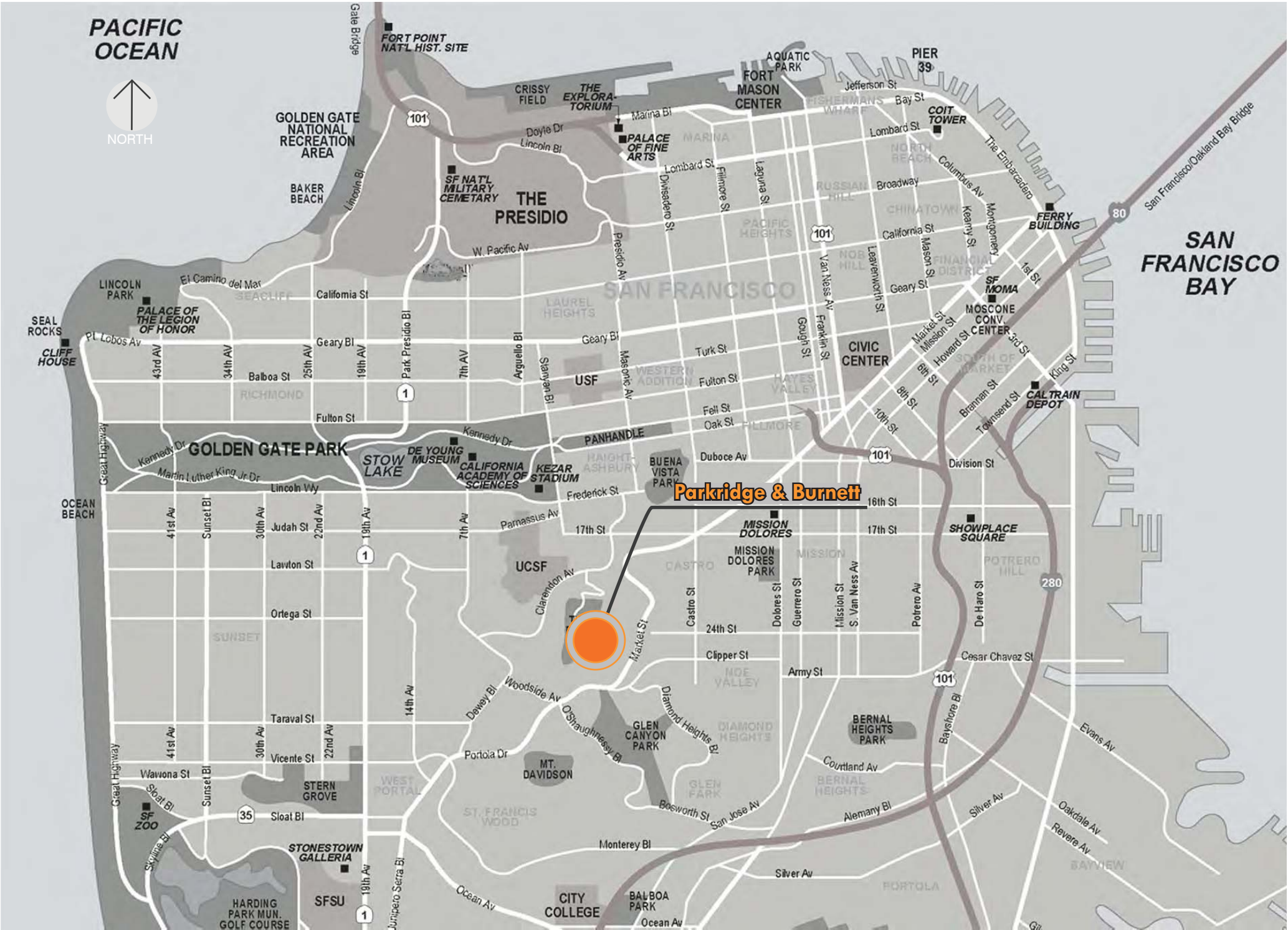
DESIGN CRITERIA

TEMPORARY / PREFABRICATED FACILITIES

- A. ADA Accessible
- B. Dependent on service volume at specific locations
- C. Direct connection to city utilities with the possibility of relocation if terminal location changes

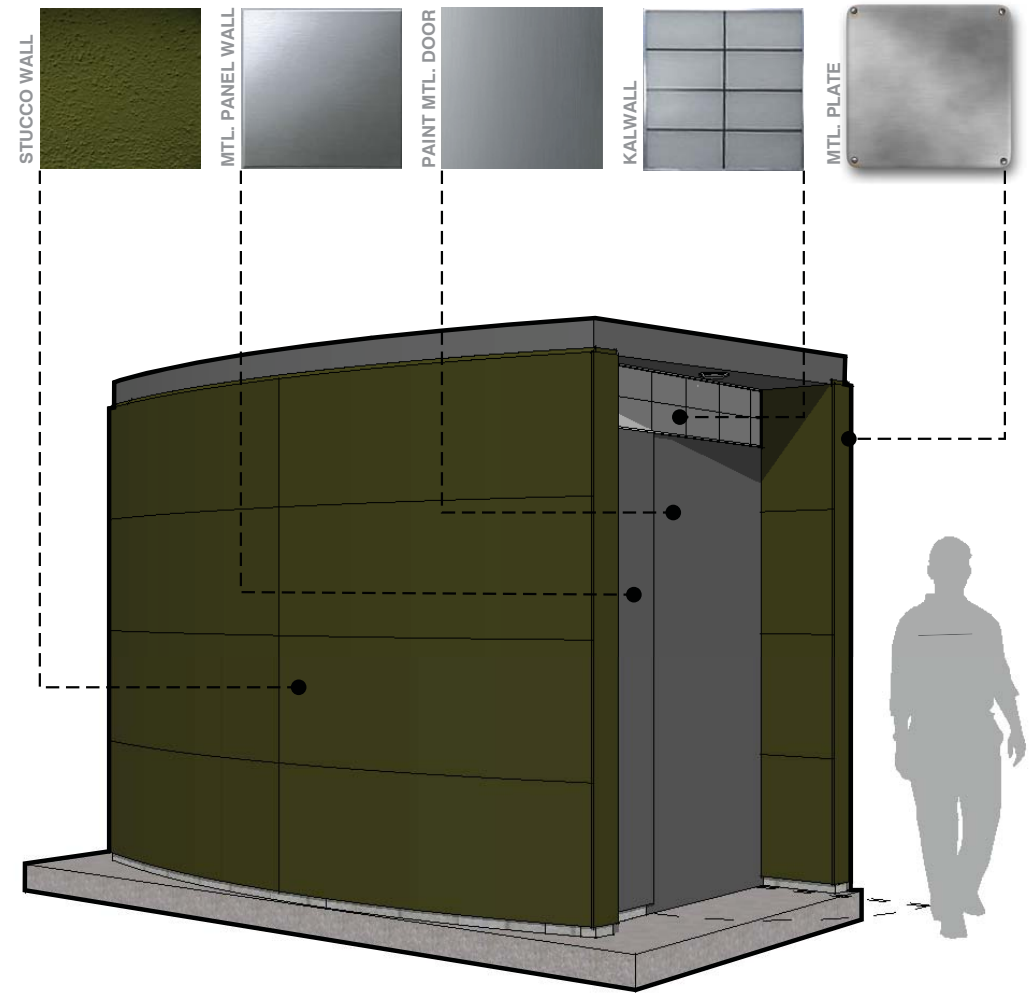
NEW LOCATIONS

BUS LINE 37 Parkridge Drive and Burnett Avenue

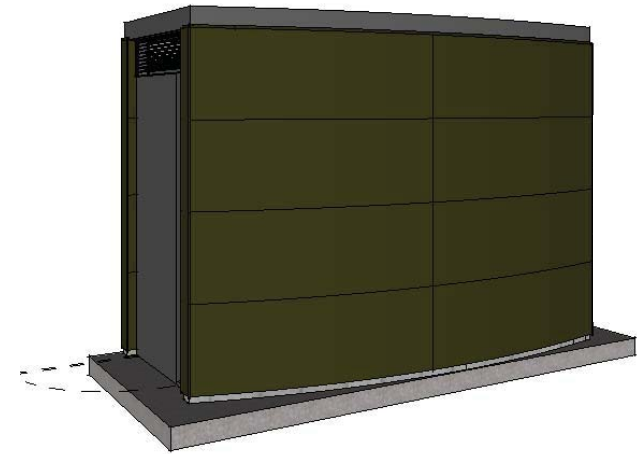


BASIC MODULE DESIGN

MATERIALS & COLOR SCHEME



SINGLE OCCUPANCY - BASIC MODULE

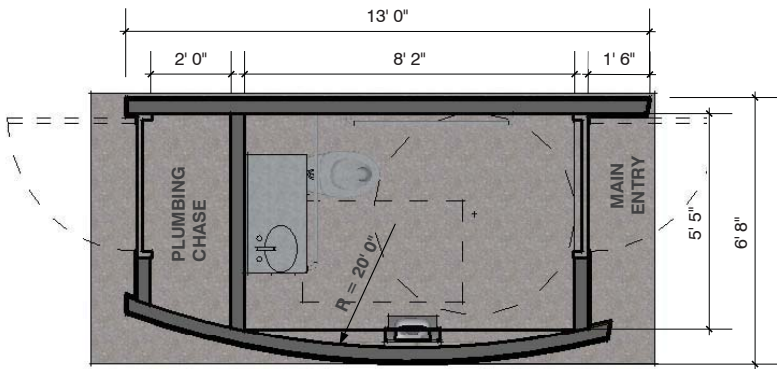


SINGLE OCCUPANCY - BASIC MODULE REAR VIEW

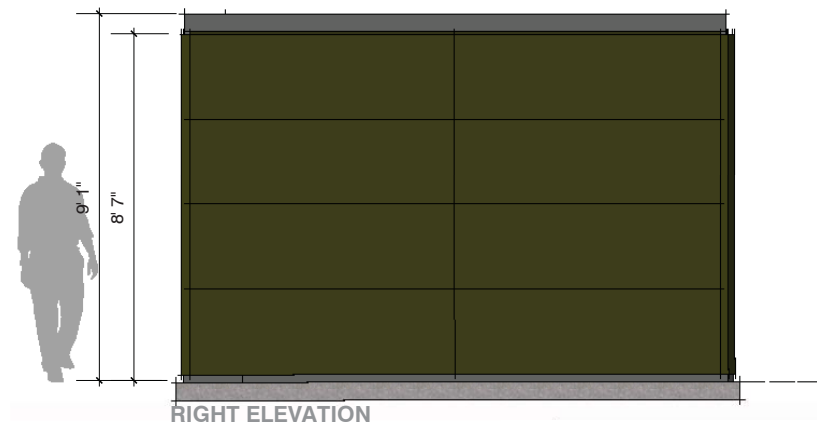
DESIGN CRITERIA

TEMPORARY/ PREFABRICATED FACILITIES

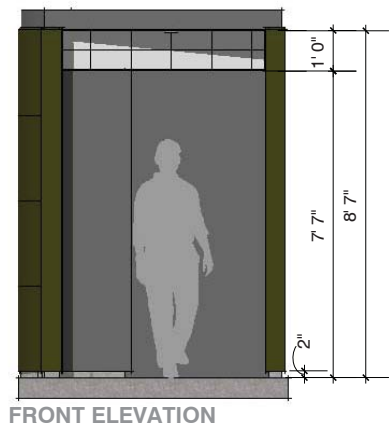
- WALLS:** C.M.U. WALLS WITH CEMENT PLASTER. PAINT & ANTIGRAFFITI COATING.
- INTERIOR FINISH:** EXPOSED CMU W/ EPOXY PAINT.
- DOORS:** GALVANIZED METAL DOORS, PAINTED.
- NATURAL ILUMINATION:** KALWALL.
- VENTILATION:** METAL LOUVERS & MECHANICAL EXHAUST FAN.
- LIGHTING:** INTERIOR - MOTION ACTIVATED LIGHT, EXTERIOR - RECESSED CEILING LIGHT.
- FLOOR:** EXPOSED CONCRETE.



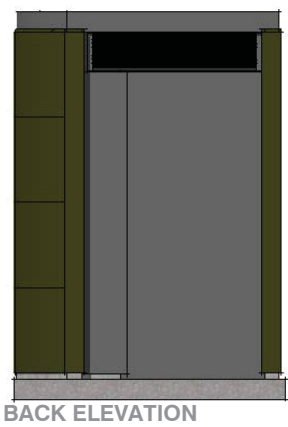
FLOOR PLAN - SINGLE OCCUPANCY- BASIC MODULE



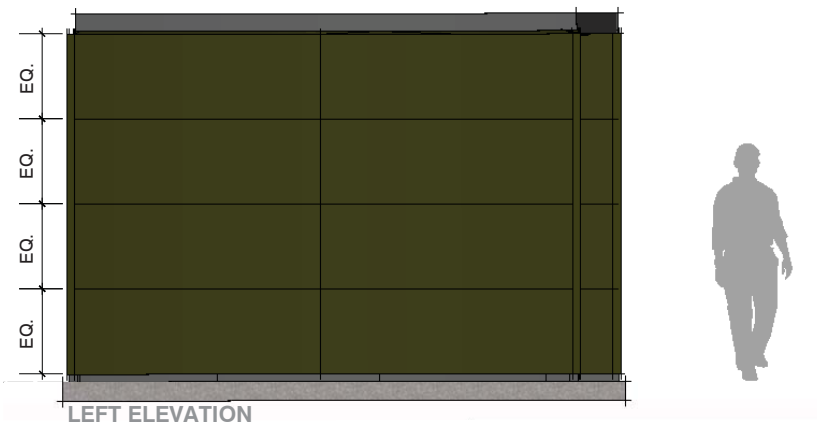
RIGHT ELEVATION



FRONT ELEVATION



BACK ELEVATION

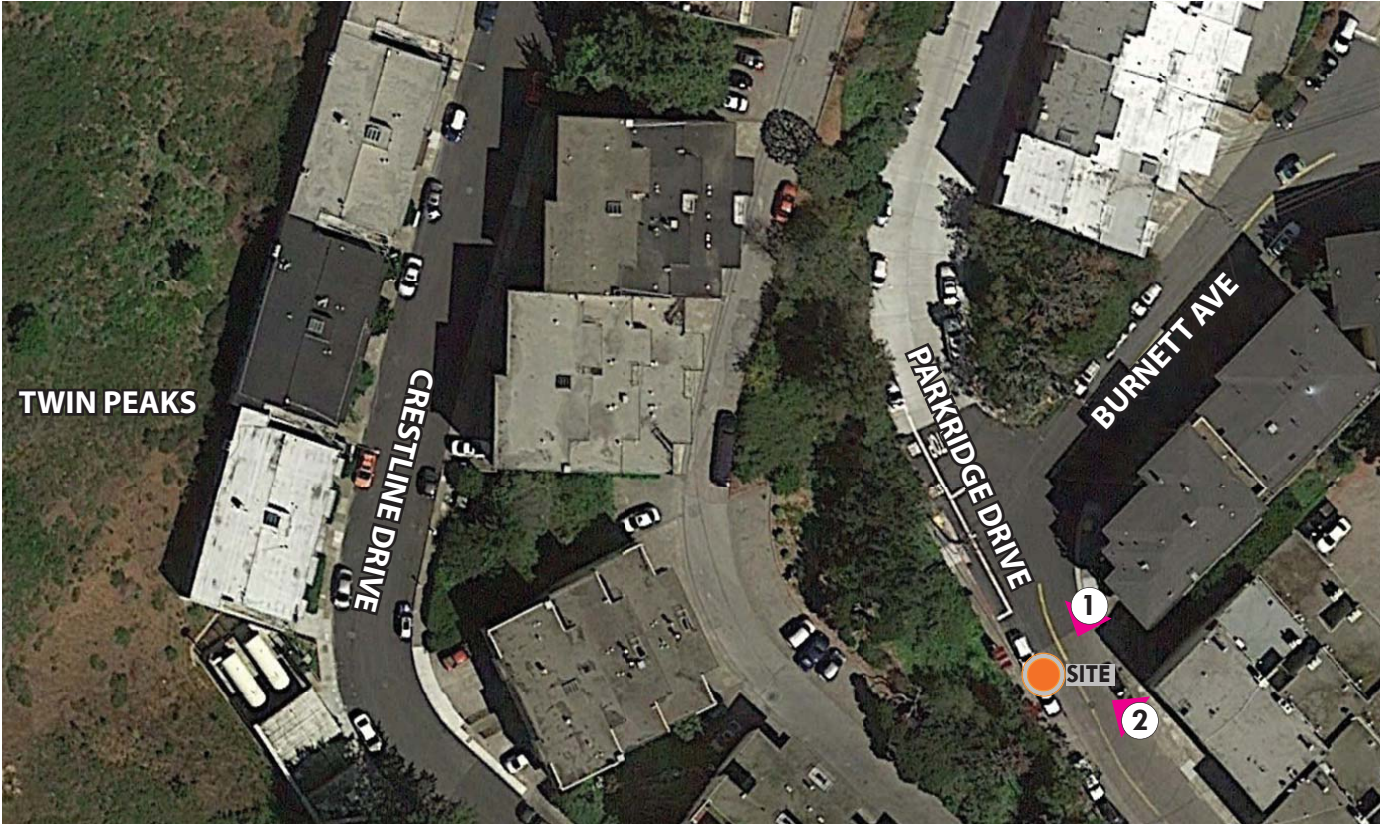


LEFT ELEVATION

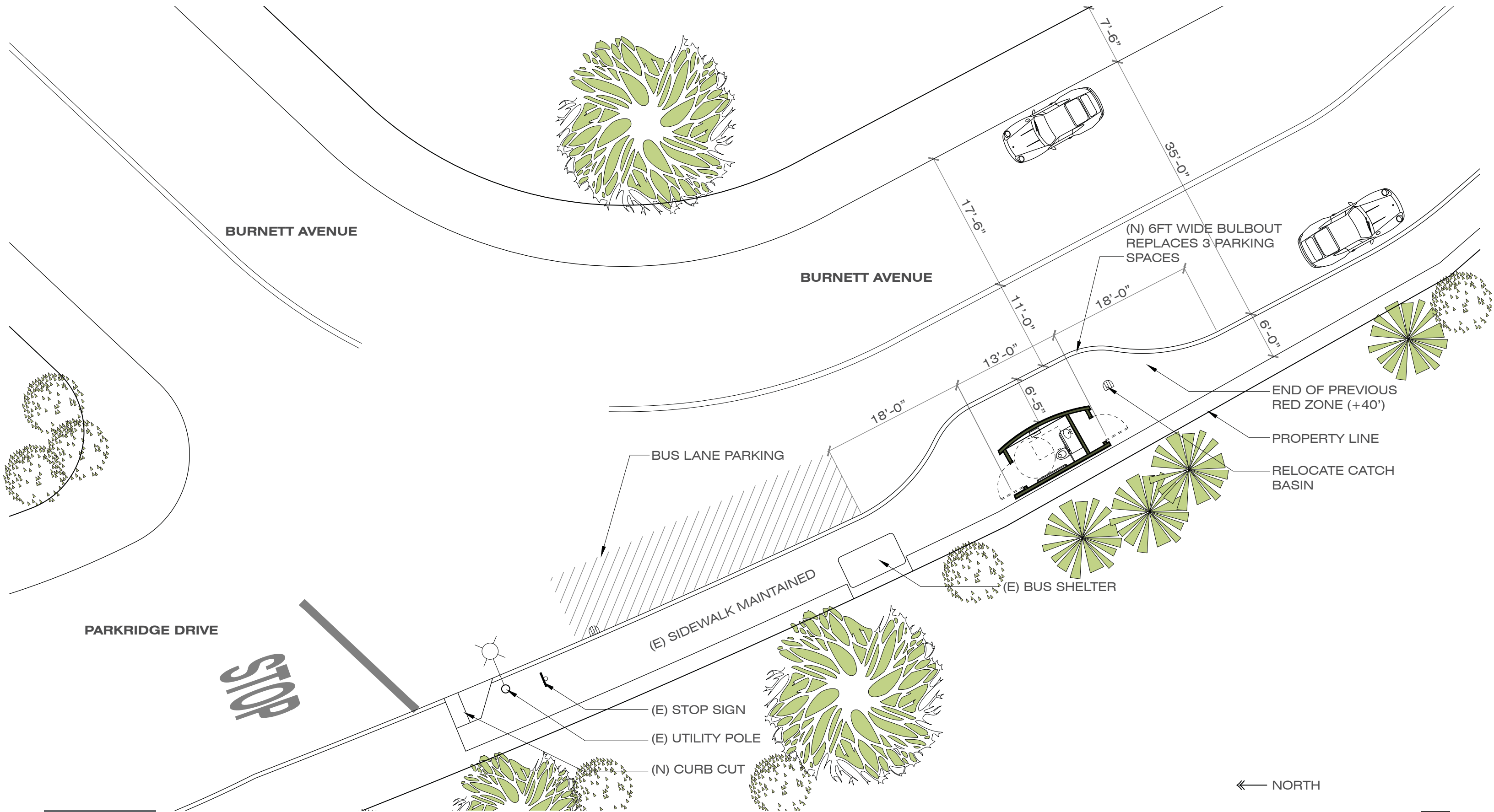
3RD STREET AND FITZGERALD AVE. | INSTALLATION



SITE MAP & PHOTOS



SITE PLAN (N.T.S.)



PERSPECTIVE 1 - LOOKING SOUTH



PERSPECTIVE 2 - LOOKING NORTH

