



# San Francisco International Airport Terminal 1

Civic Design Review\_Concept Design

March 21, 2016



San Francisco International Airport  
© All rights reserved, Andrew Choi

## I. Overview

---

Project Site	4
Project Overview	6
Project Team Organization	8
Project Scope	9
Project Schedule	10

## II. Design Approach

---

# I. OVERVIEW





TERMINAL 2

TERMINAL 1

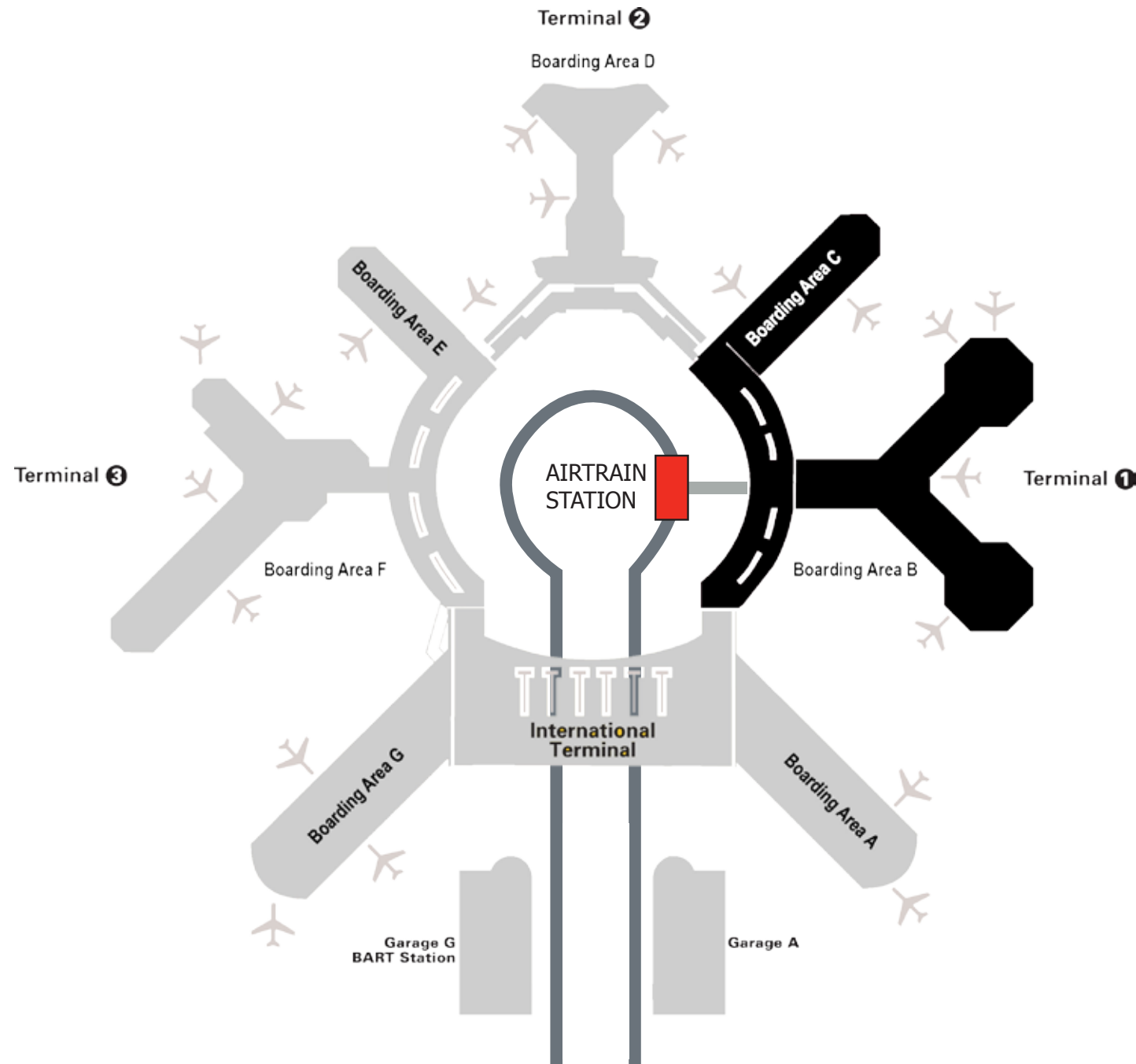
TERMINAL 3

INTERNATIONAL  
TERMINAL

BART  
STATION

US 101





## 1. REPLACE OUTDATED FACILITIES

- EXISTING TERMINAL 1                      1961
- BAB    1961
- BAC    1984

## 2. ACCOMMODATE FORECASTED TRAFFIC

	EXISTING GATES	PROPOSED GATES
- BAB	19	24
- BAC	10	10

## 3. SUPPORTS BOTH DOMESTIC AND INTERNATIONAL FLIGHTS

## 4. SFO GOAL TO BE NET ZERO IN 5 YEARS

## 5. DESIGNED FOR OPERATIONAL FLEXIBILITY

## 6. WORLD CLASS PASSENGER EXPERIENCE

## 7. AUTHENTIC SAN FRANCISCO BAY AREA EXPERIENCE

## Terminal 1 Center (T1C)

General Contractor     **Hensel Phelps**

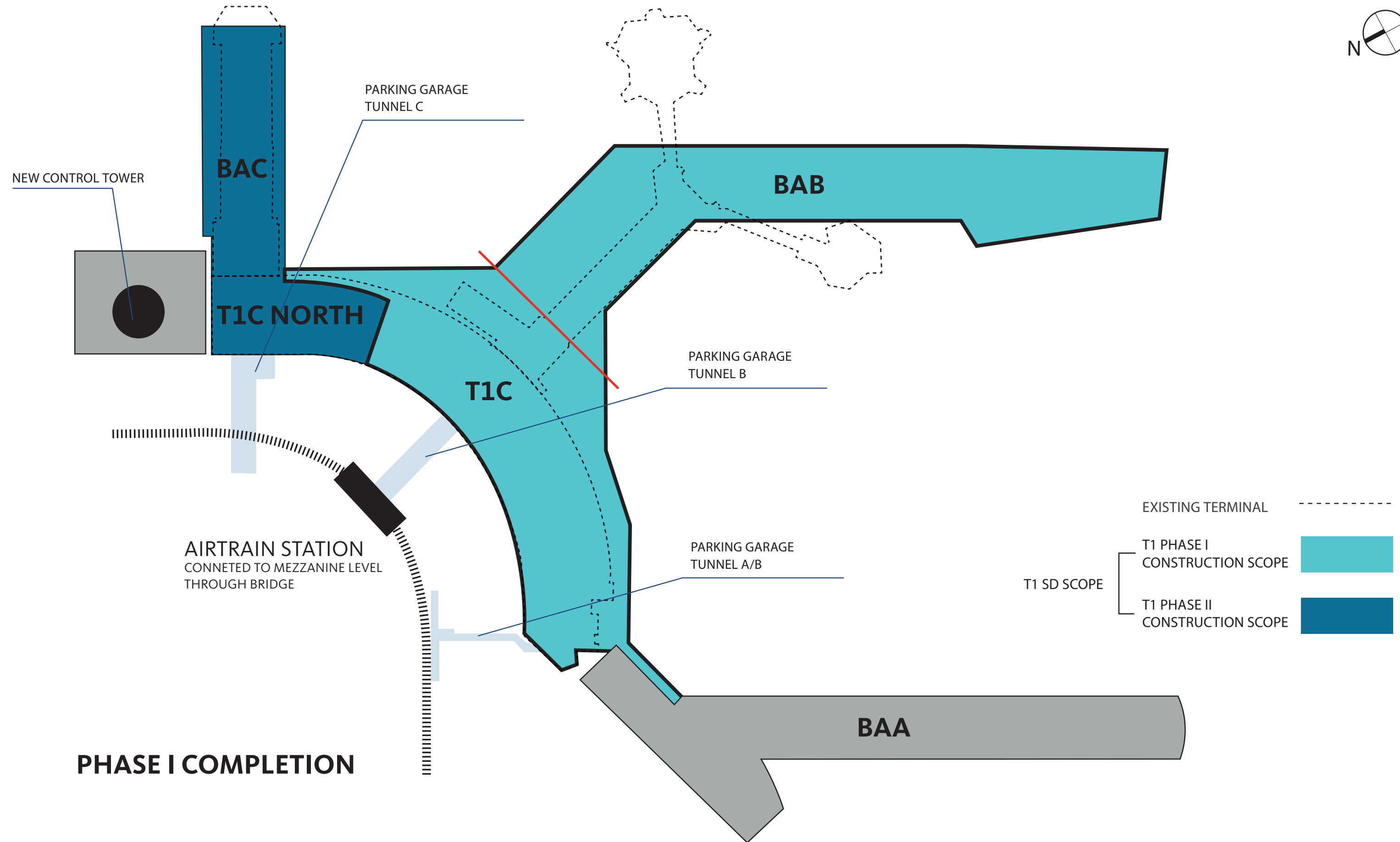
Design Team     **Gensler**  
**Kuth / Ranieri**  
**Hamilton + Aitken**

## Boarding Area B (BAB)

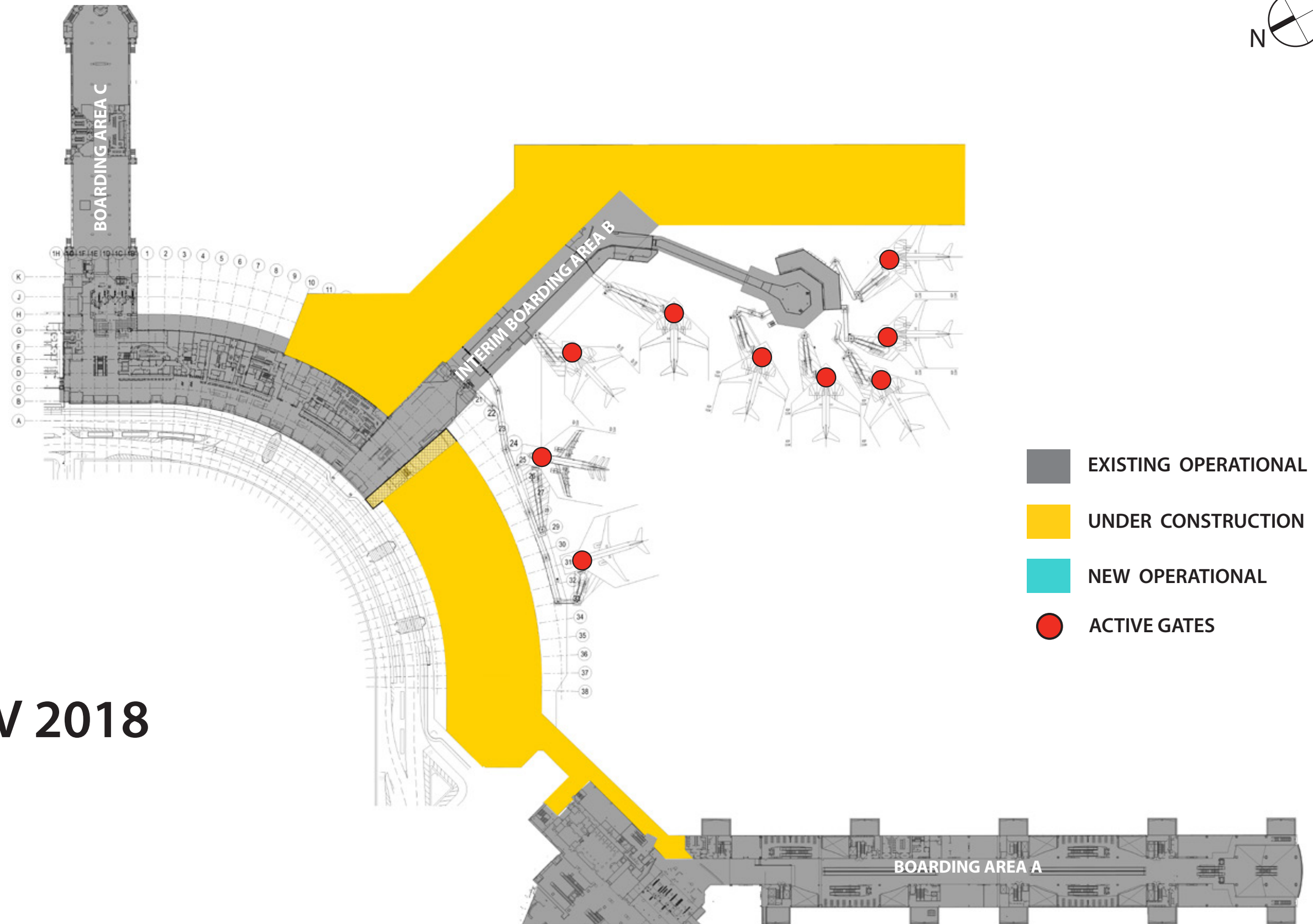
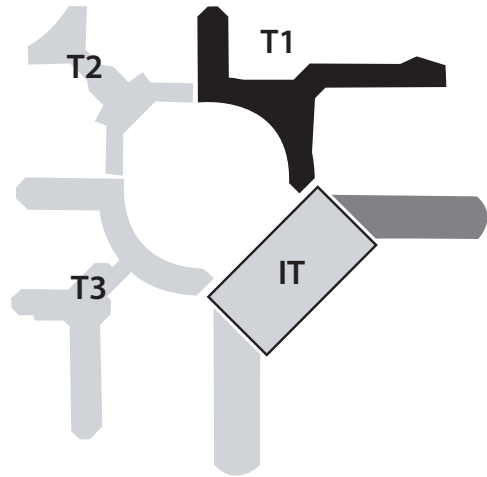
General Contractor     **Austin / Webcor**

Design Team     **HKS**  
**Woods Bagot**  
**ED2**  
**KYA**







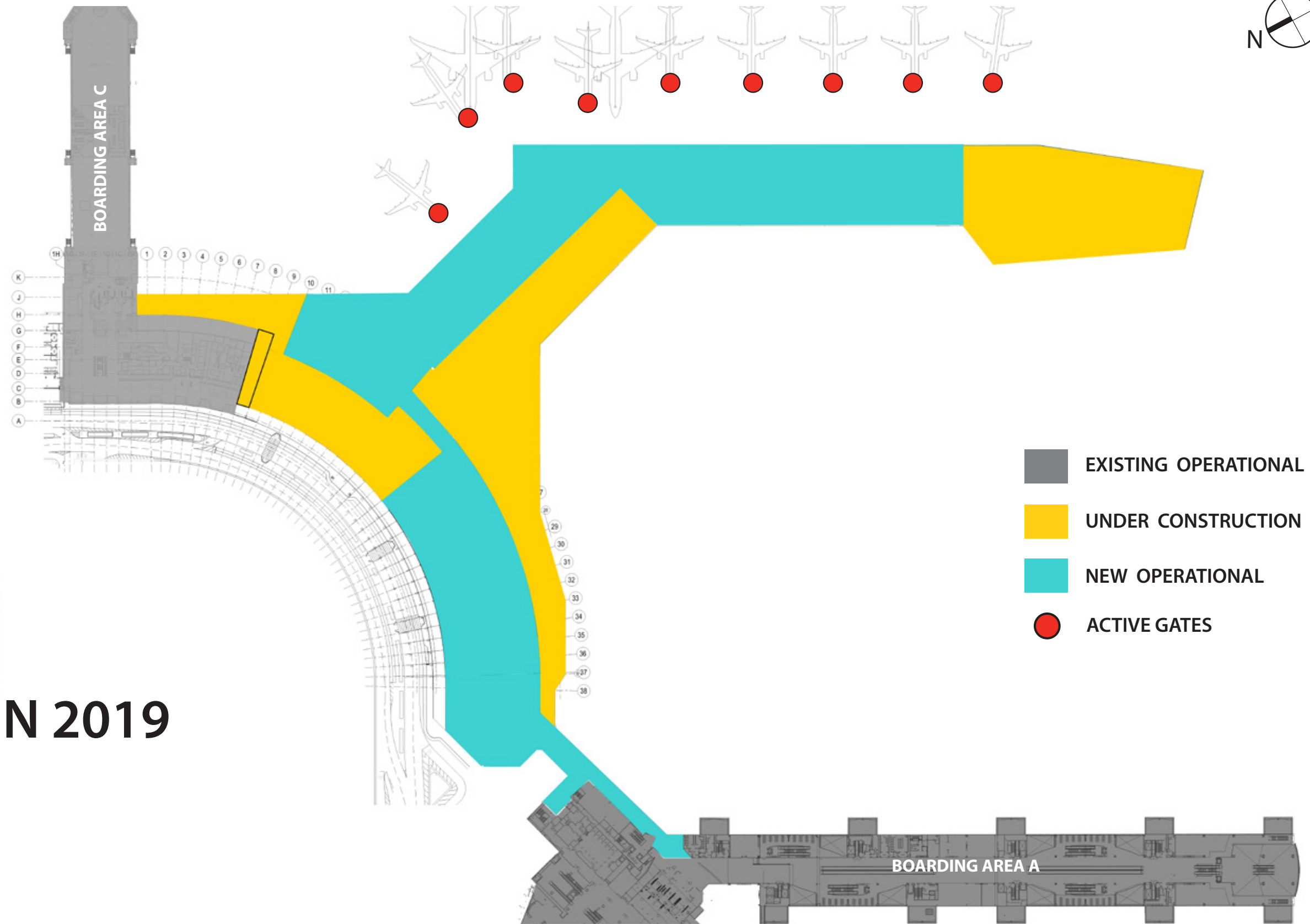
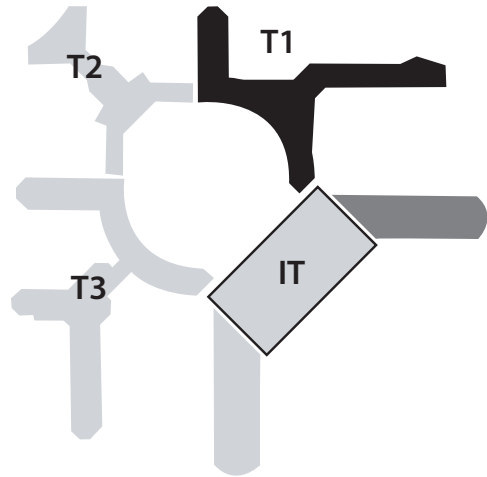


# STAGE 1

SEP 2016 - NOV 2018

# 9

ACTIVE GATES

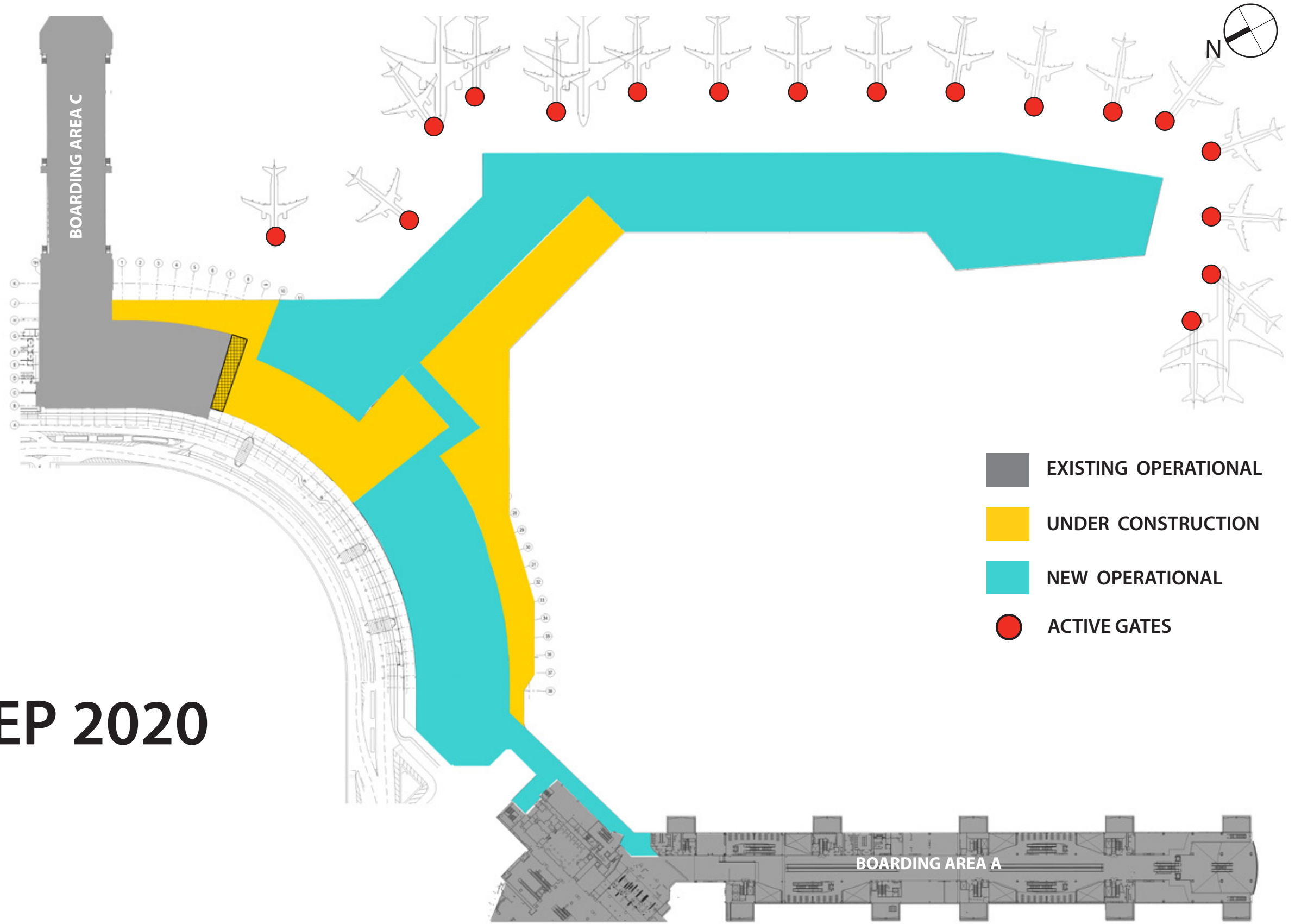
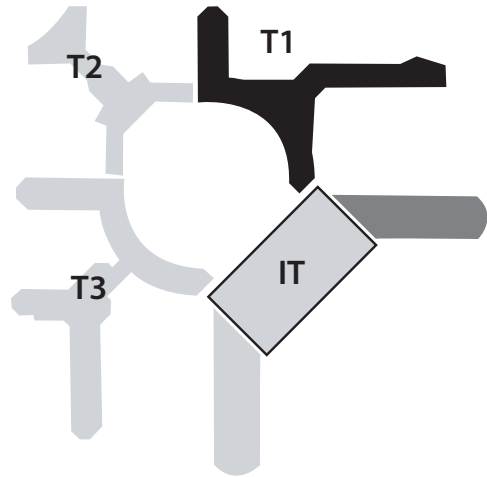


# STAGE 2A

NOV 2018 - JUN 2019

# 9

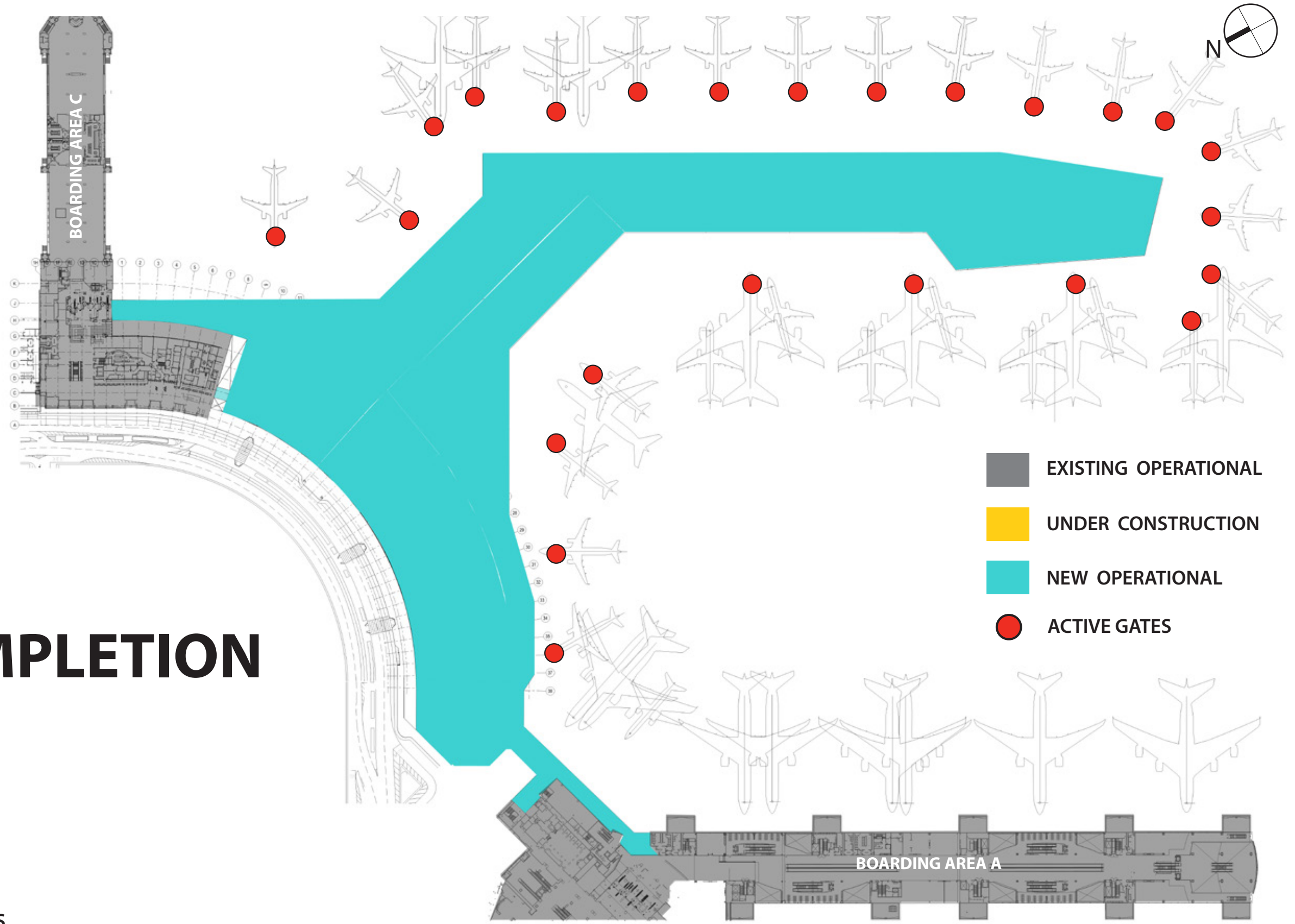
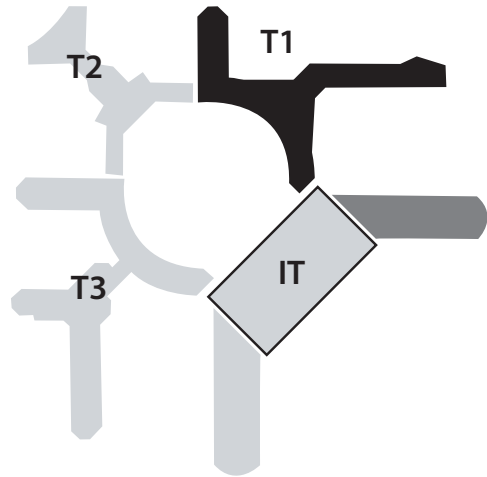
ACTIVE GATES



- EXISTING OPERATIONAL
- UNDER CONSTRUCTION
- NEW OPERATIONAL
- ACTIVE GATES

**STAGE 2B**  
**JUN 2019 - SEP 2020**

**17**  
ACTIVE GATES



- EXISTING OPERATIONAL
- UNDER CONSTRUCTION
- NEW OPERATIONAL
- ACTIVE GATES

**PHASE I COMPLETION**  
**SEP 2020**

**24** ACTIVE GATES

## II. DESIGN APPROACH



# DESIGN APPROACH BAY AREA NATURALISM



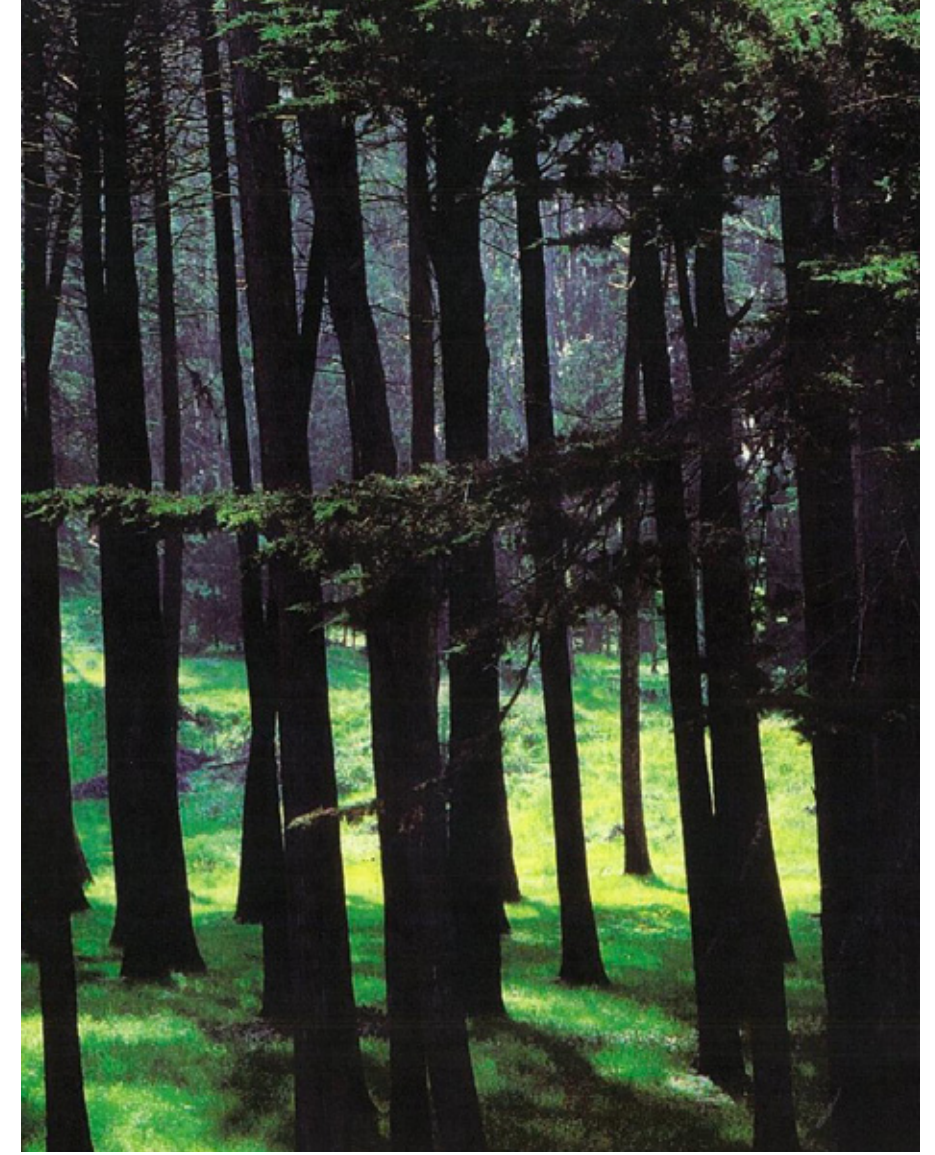
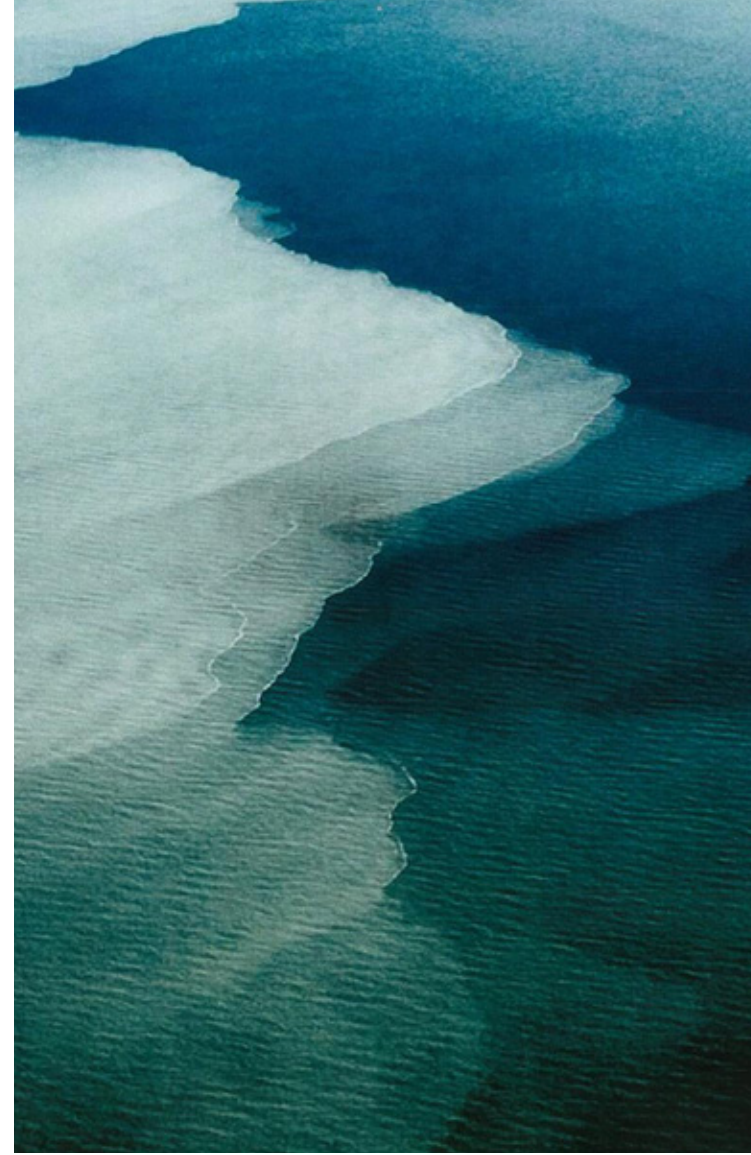
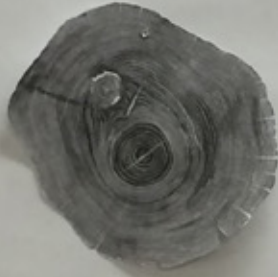
## BAY AREA NATURALISM

*Celebrating the environment of Northern California: a **VARIETY** of curated **ENVIRONMENTS** that foster **EXPLORATION** and **DISCOVERY**.*

*Some of these experiences are based on **SPEED** and **EFFICIENCY**, others encourage **QUIETUDE** and **RELAXATION**.*

***LIGHT** is a prime mover in the journey, as is **CRAFT**, expressed through **NATURAL MATERIALS** like **WOOD** and **STONE**.*

***HARD LINES** co-exist with **SOFT EDGES**: a **DUALITY** that captures the **SOCIAL ETHOS** of the **BAY AREA** community.*



# DESIGN APPROACH INPUT FROM STAKEHOLDERS



**T1 BARN RAISING**  
JULY 2015



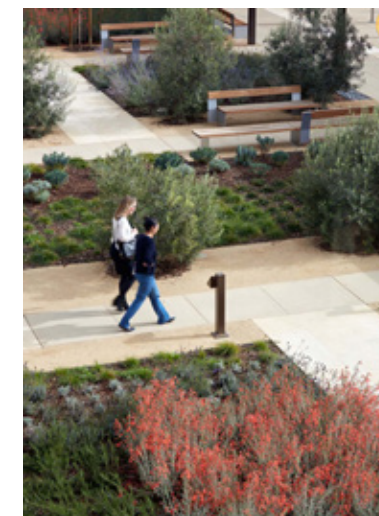
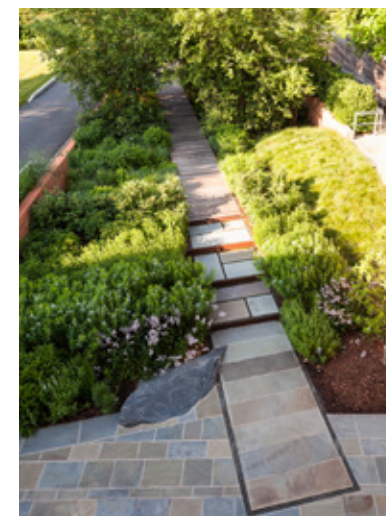
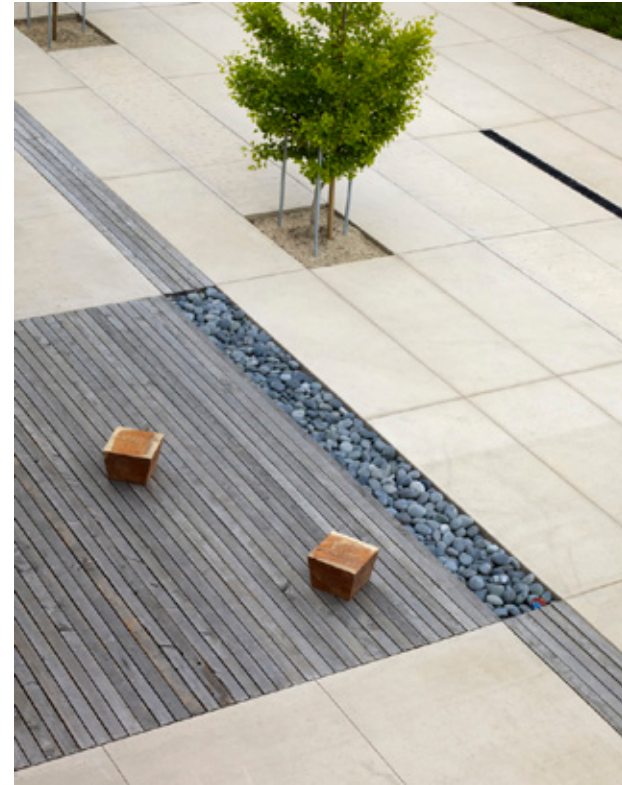
# DESIGN APPROACH

## DESIGN GUIDING PRINCIPLES

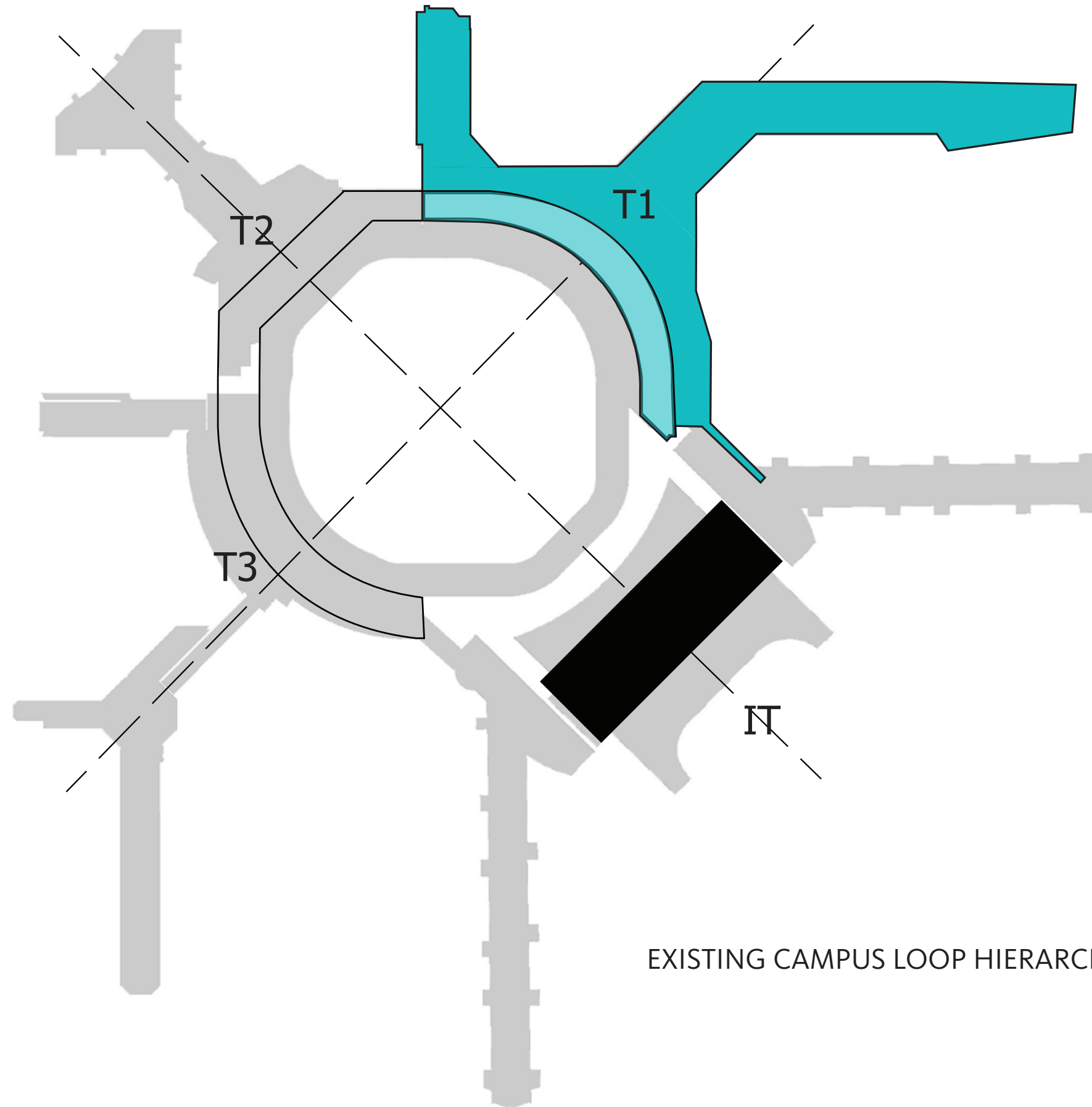




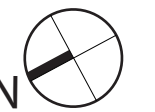
# DESIGN APPROACH INTEGRATED LANDSCAPE



# DESIGN APPROACH CAMPUS CONTEXT



EXISTING CAMPUS LOOP HIERARCHY

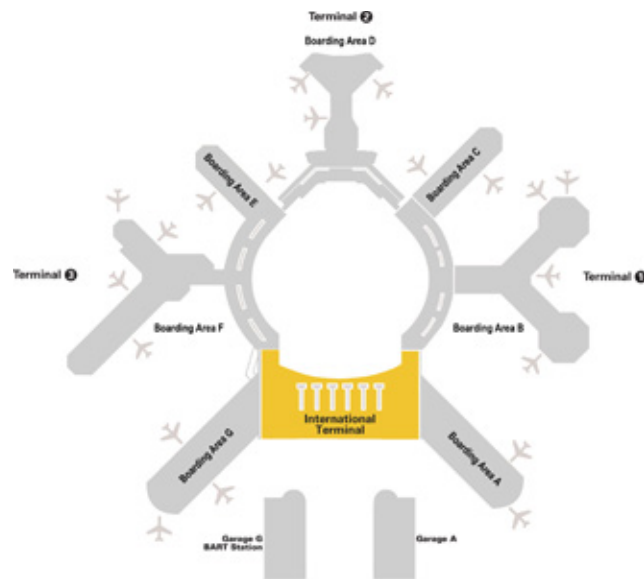
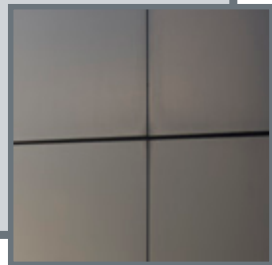


# DESIGN APPROACH

## CAMPUS MATERIAL CONTEXT\_INTERNATIONAL TERMINAL

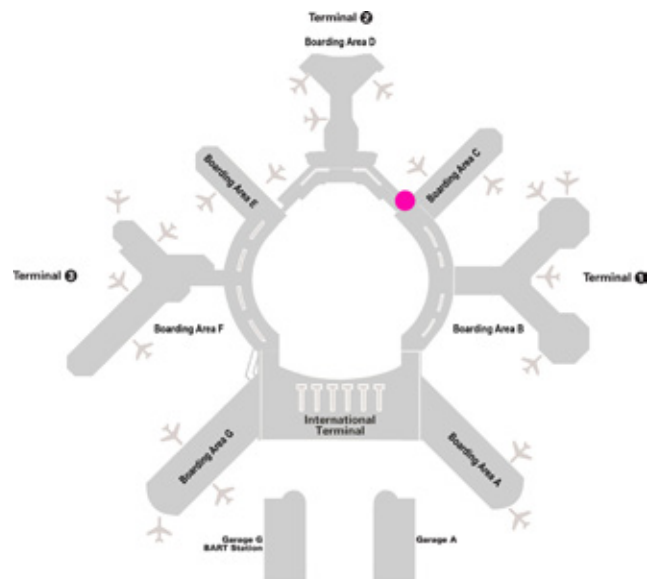
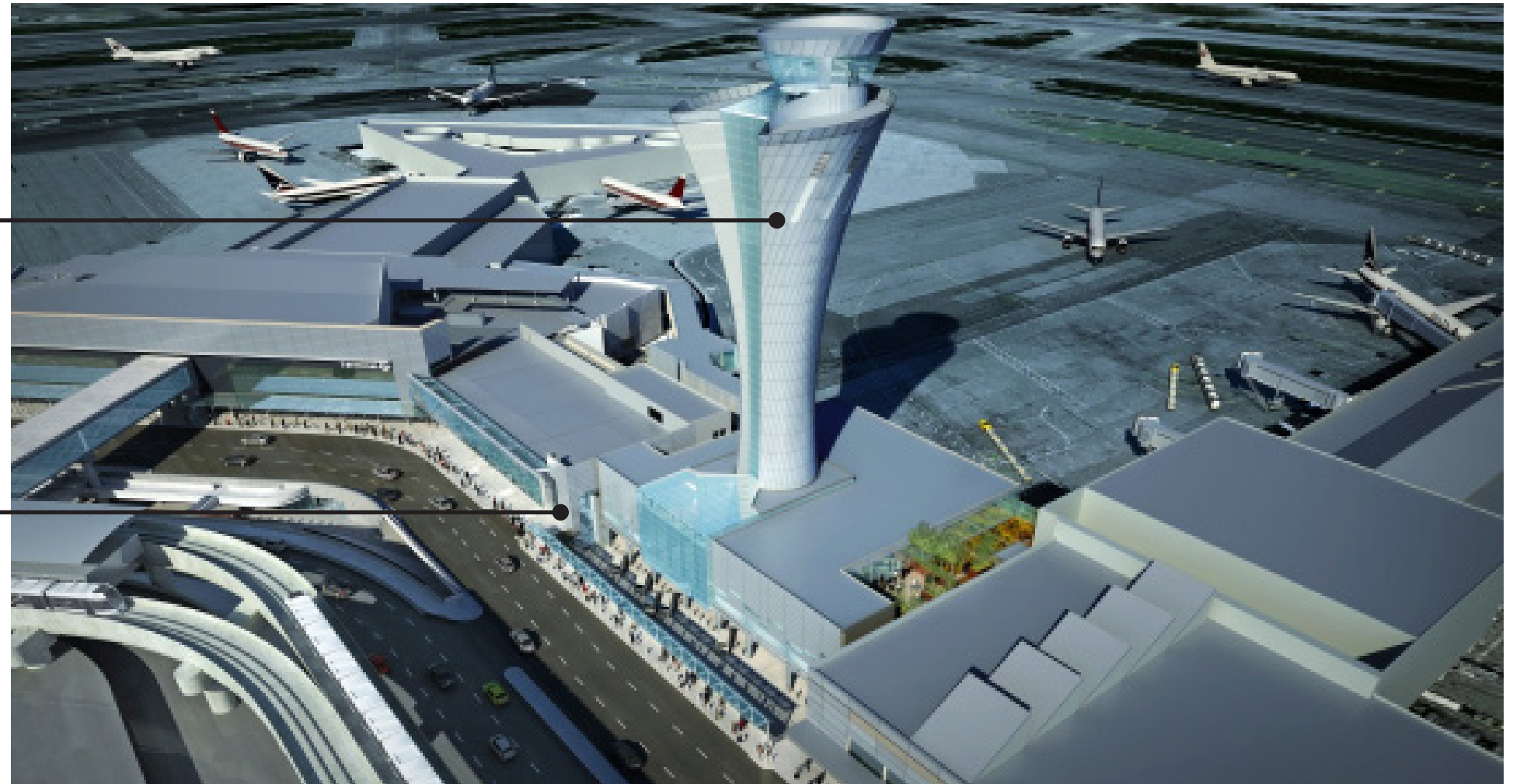
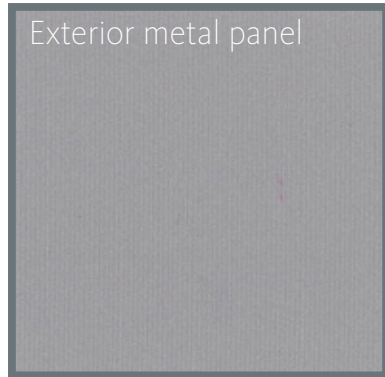
Secondary exterior metal panel

Primary exterior metal panel



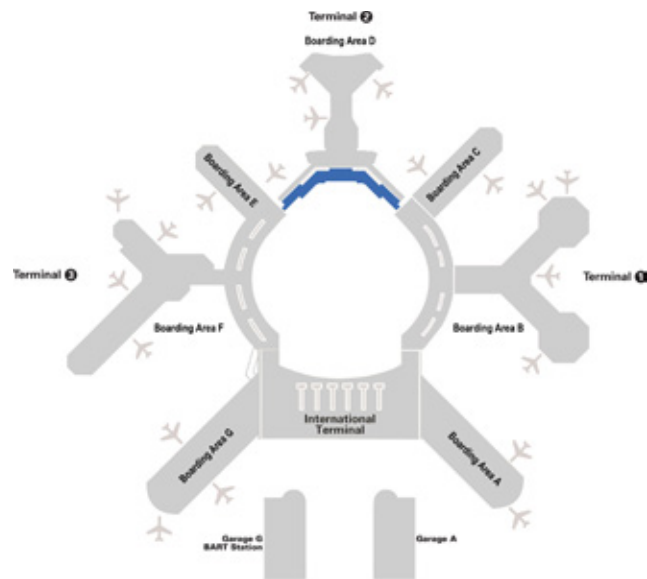
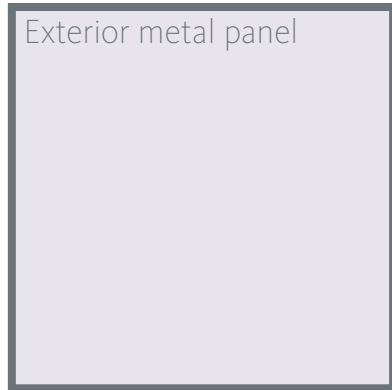
# DESIGN APPROACH

## CAMPUS MATERIAL CONTEXT\_FAA TOWER

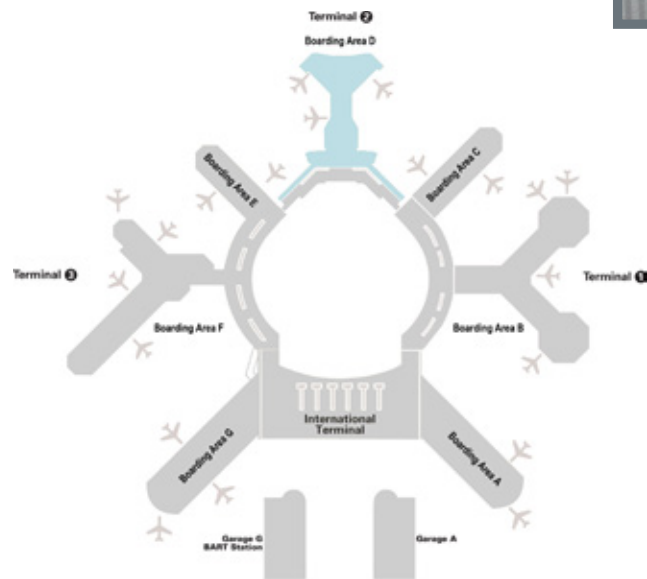
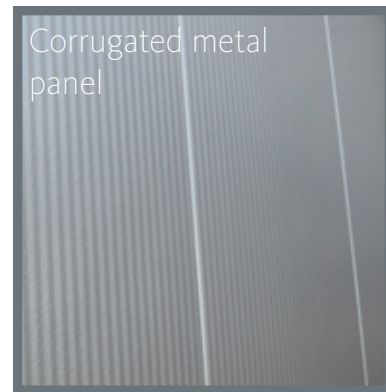
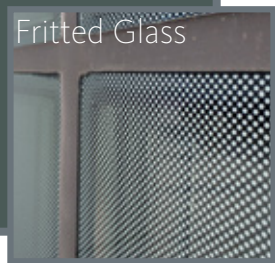
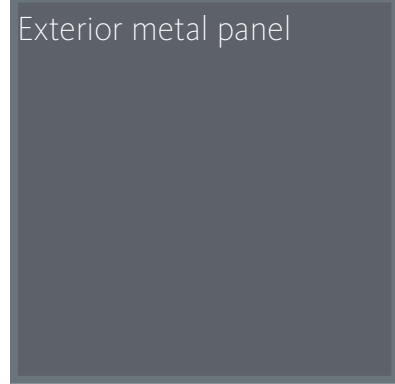


# DESIGN APPROACH

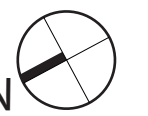
## CAMPUS MATERIAL CONTEXT\_TERMININAL 2



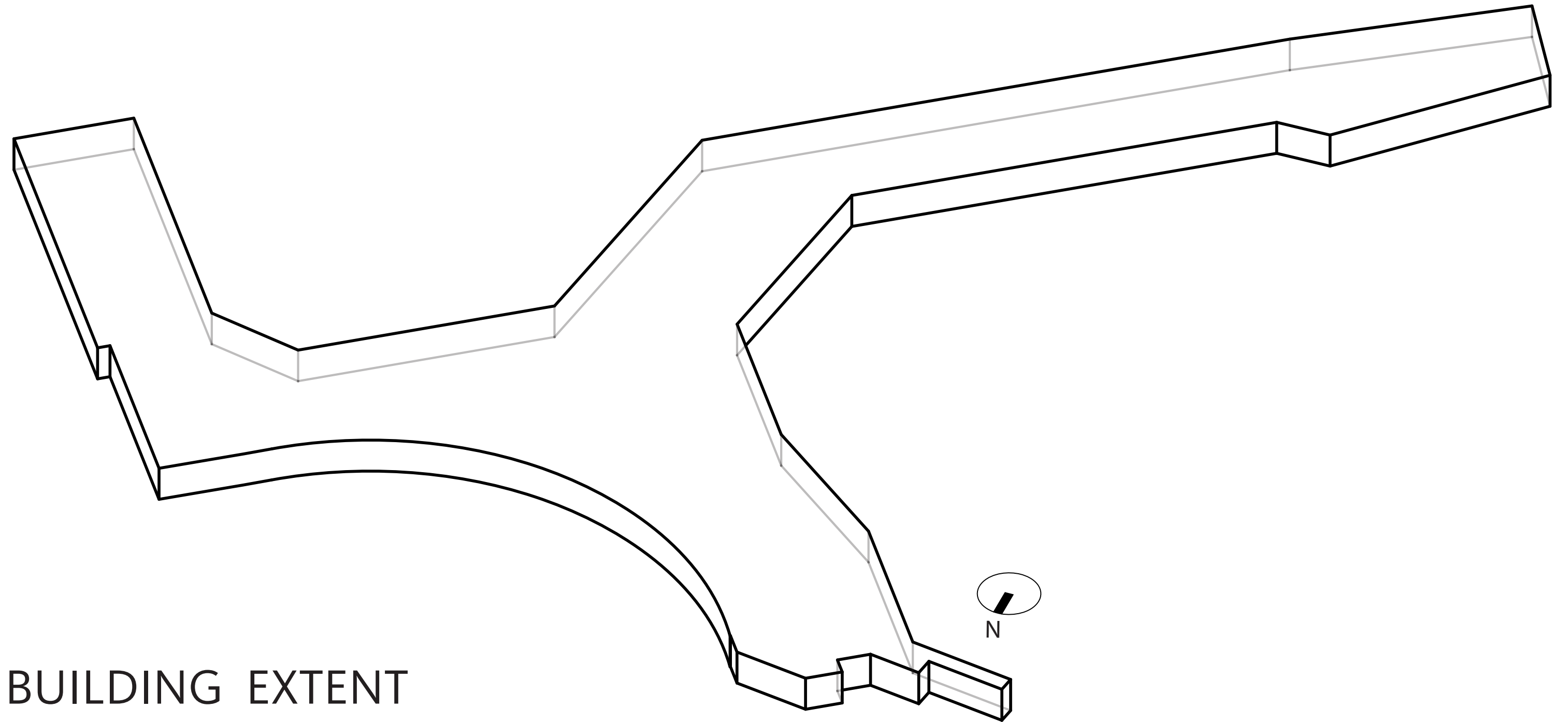
# DESIGN APPROACH CAMPUS MATERIAL CONTEXT\_BOARDING AREA D



# DESIGN APPROACH AIRCRAFT LAYOUT



DESIGN APPROACH  
MASSING CONCEPT

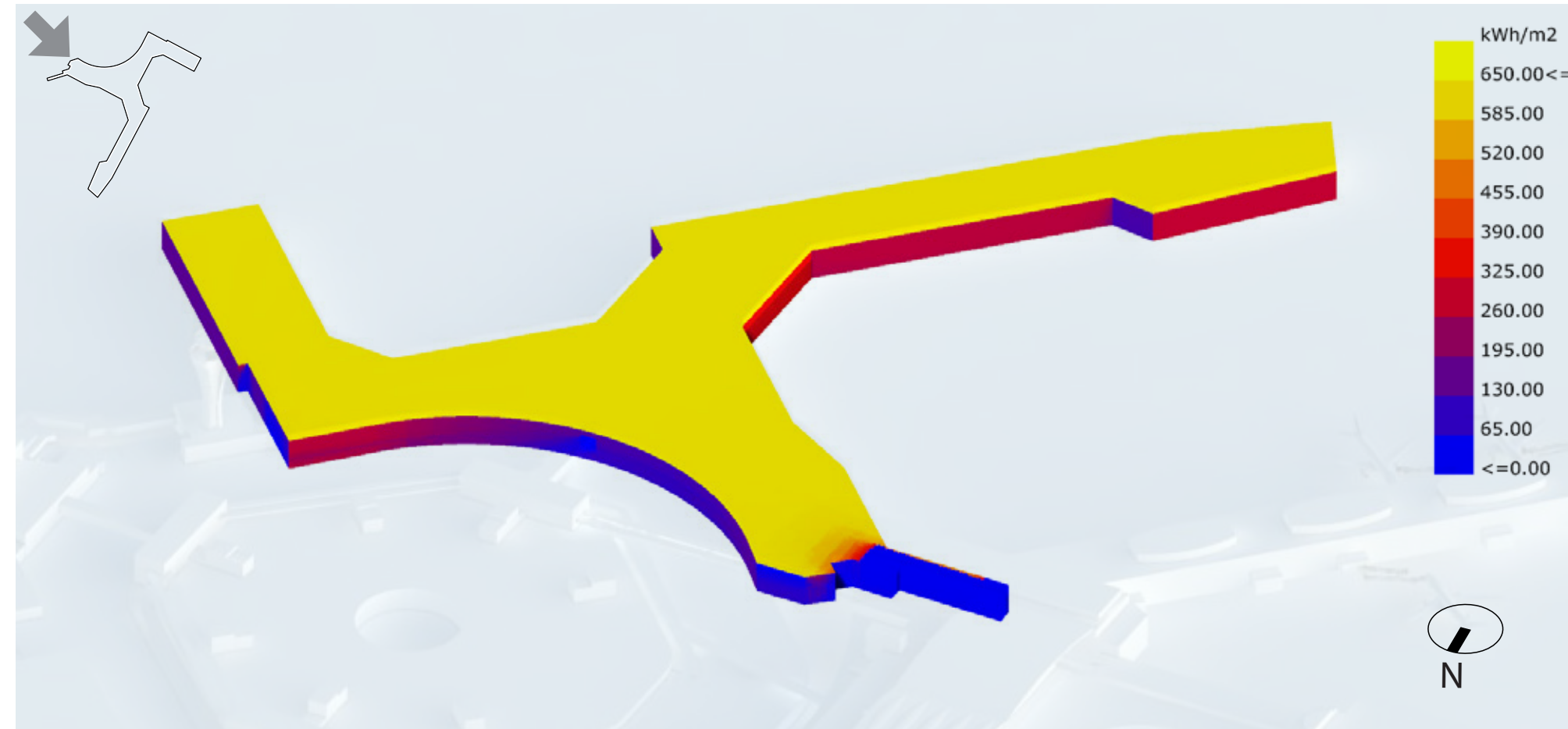
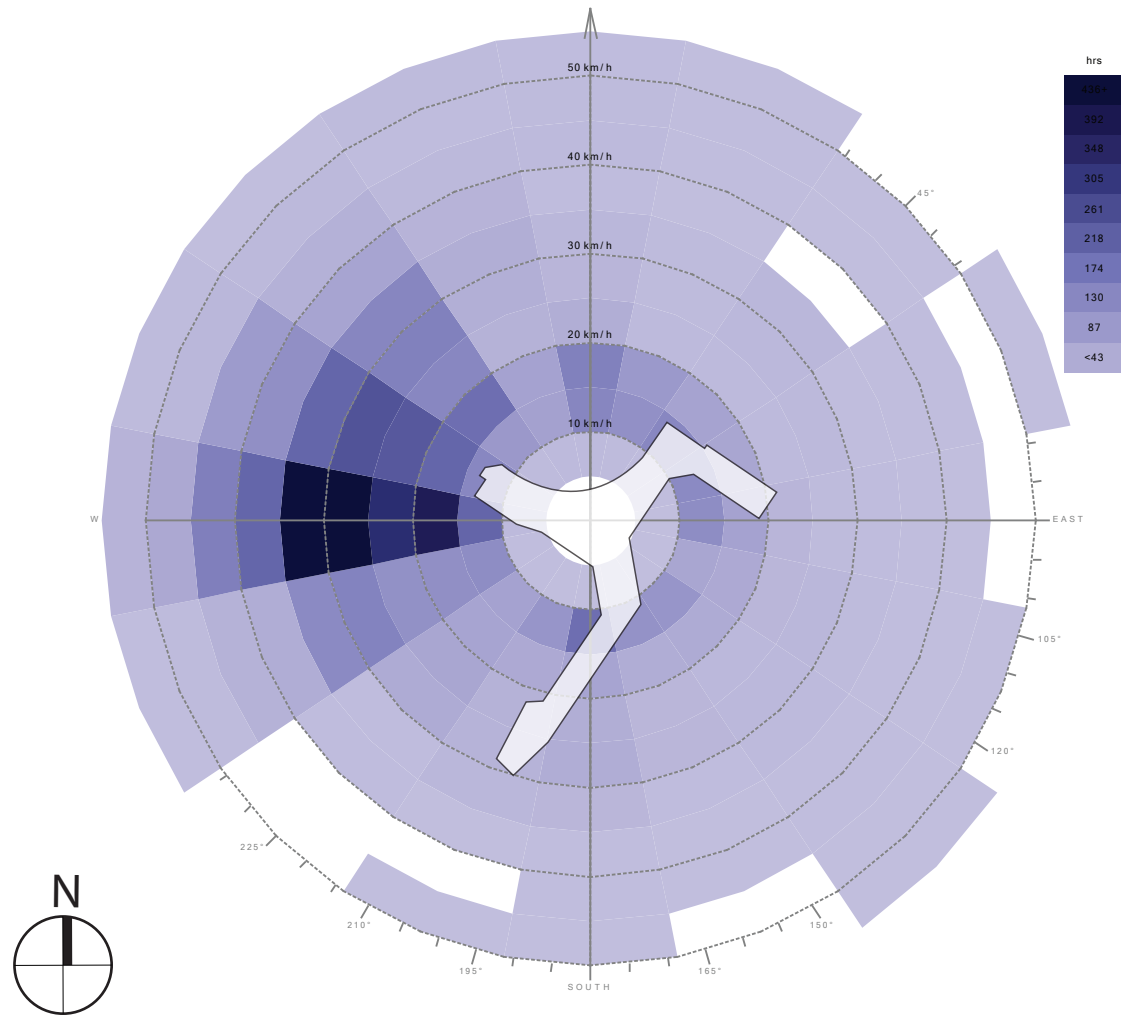


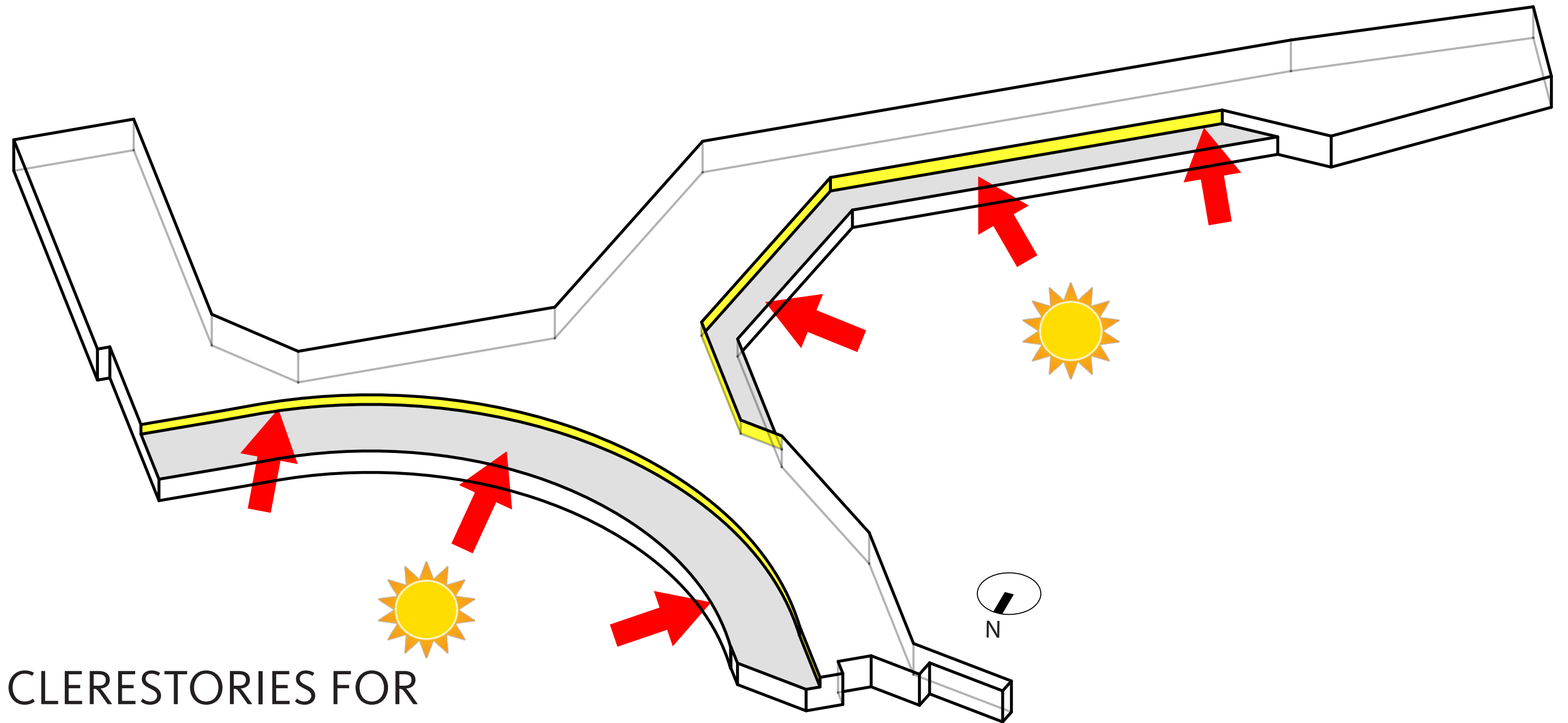
BUILDING EXTENT



# DESIGN APPROACH ENVIRONMENTAL FACTORS

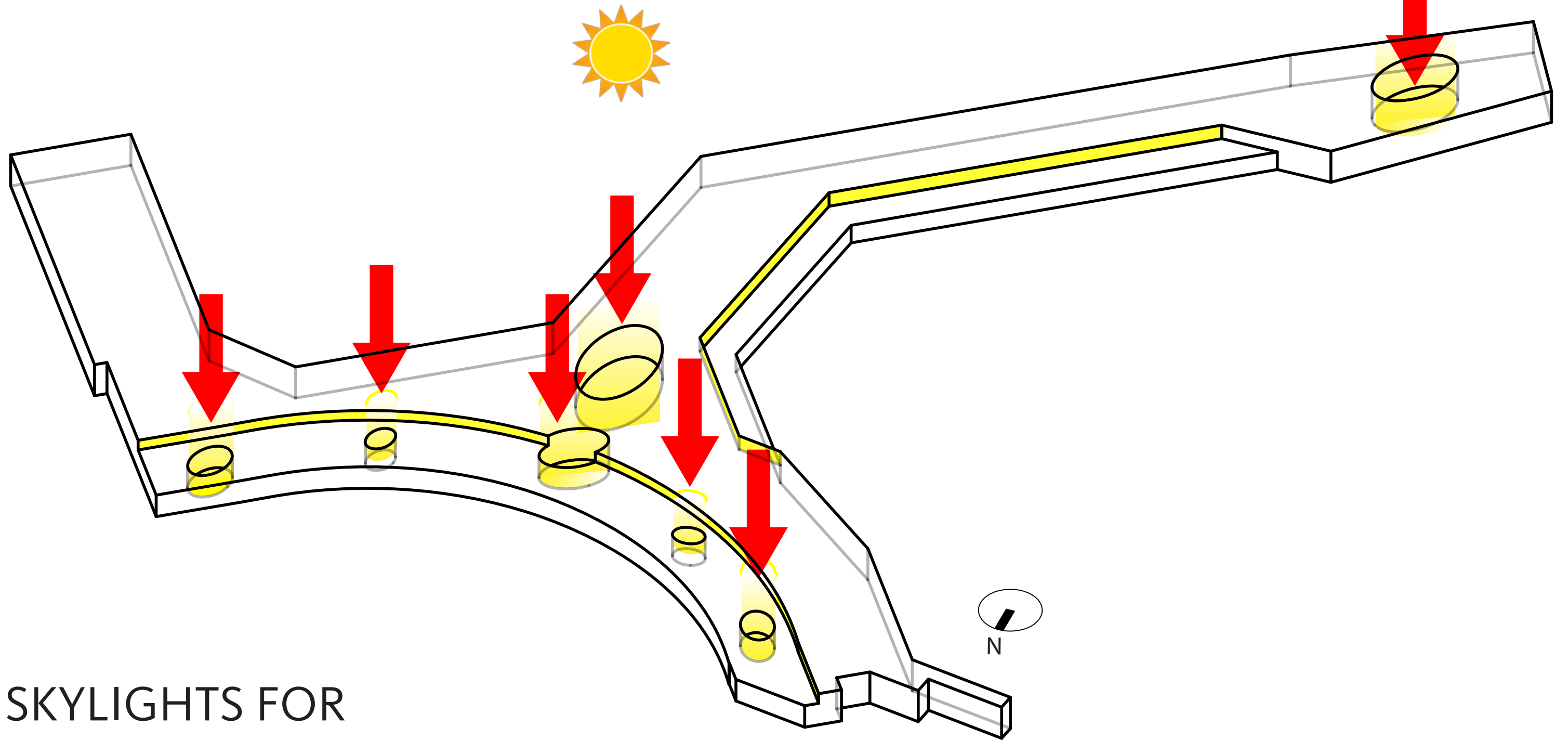
JUNE 21 - SEPTEMBER 21



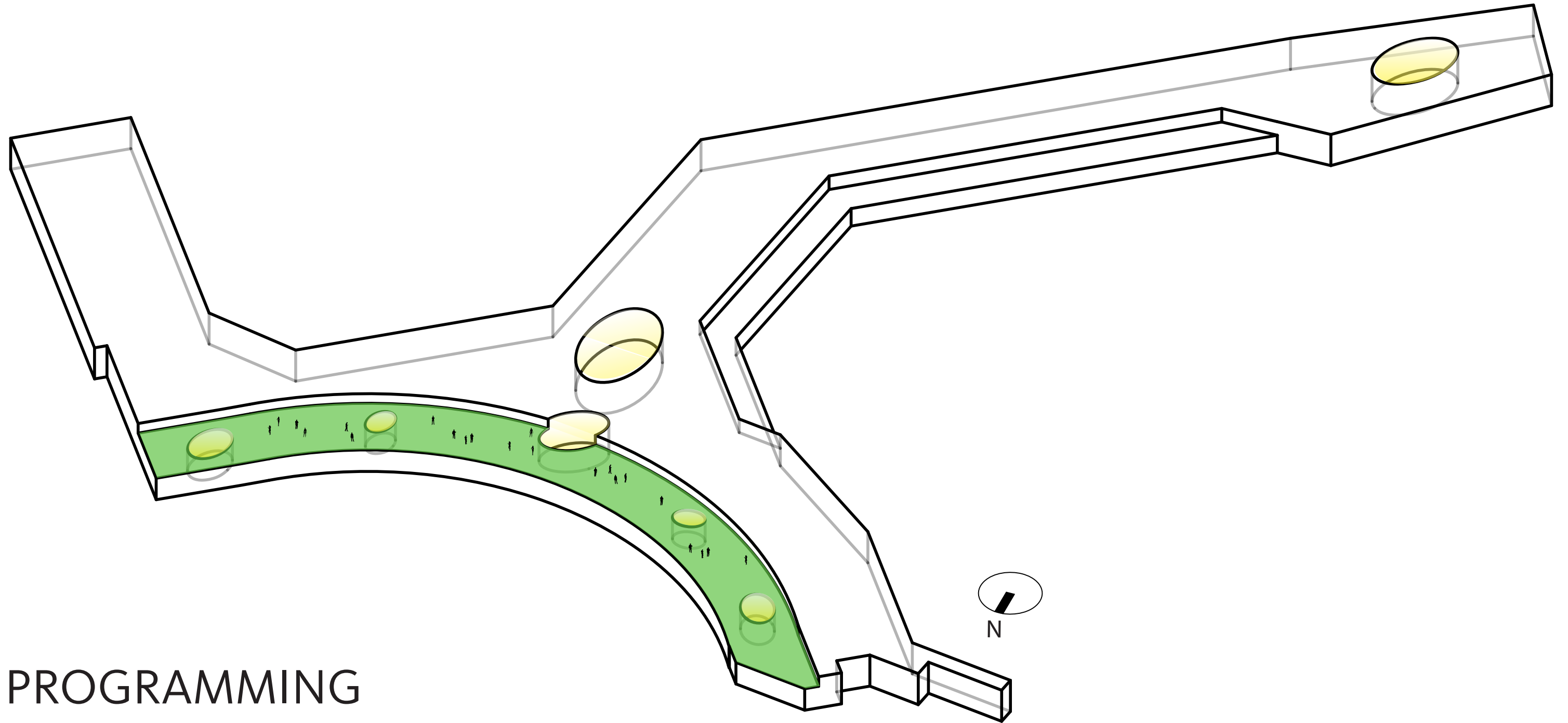


CLERESTORIES FOR  
DAYLIGHTING and WAYFINDING

DESIGN APPROACH  
MASSING CONCEPT

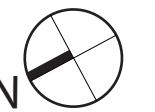
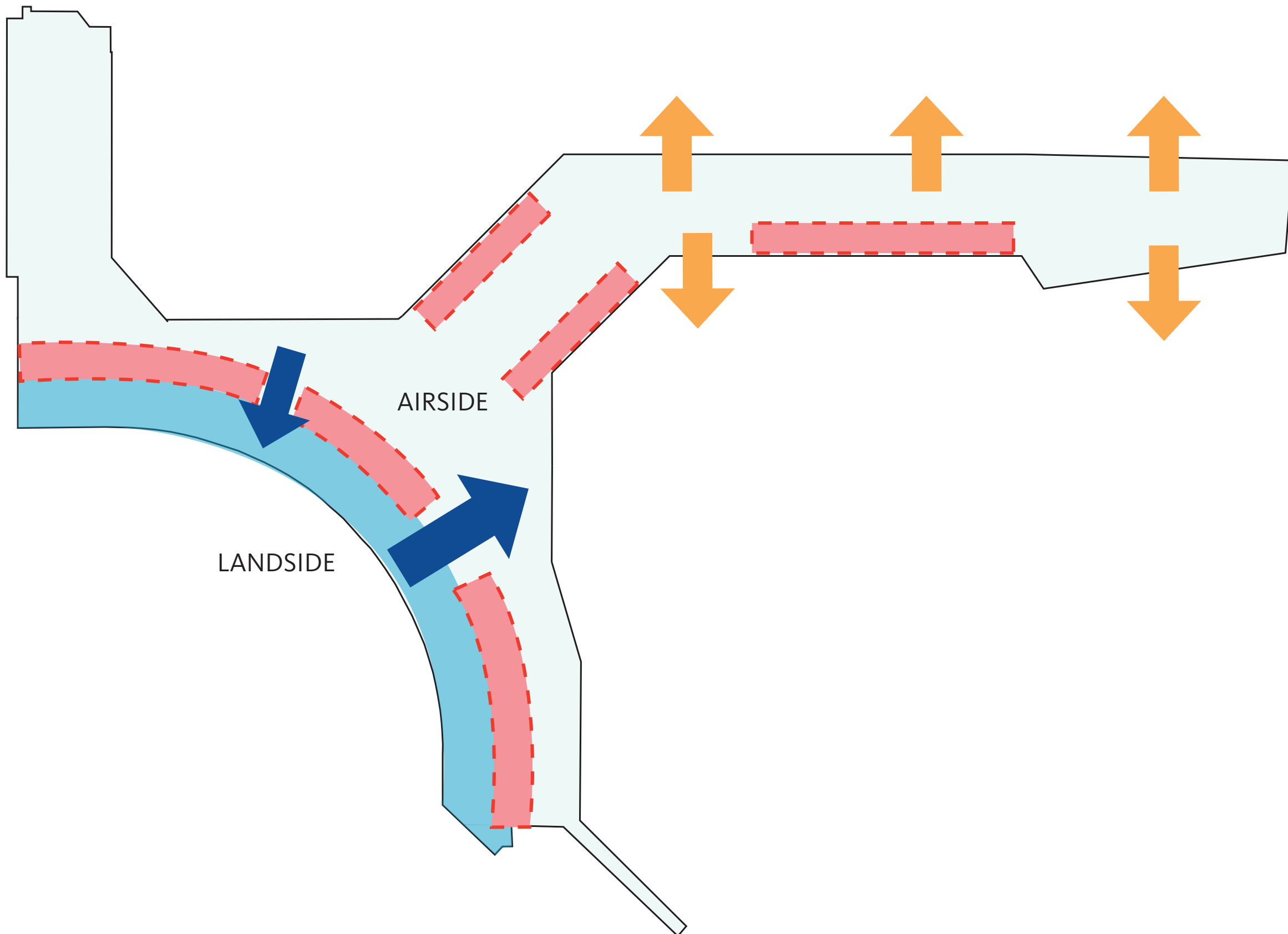


SKYLIGHTS FOR  
LIGHT PENETRATION

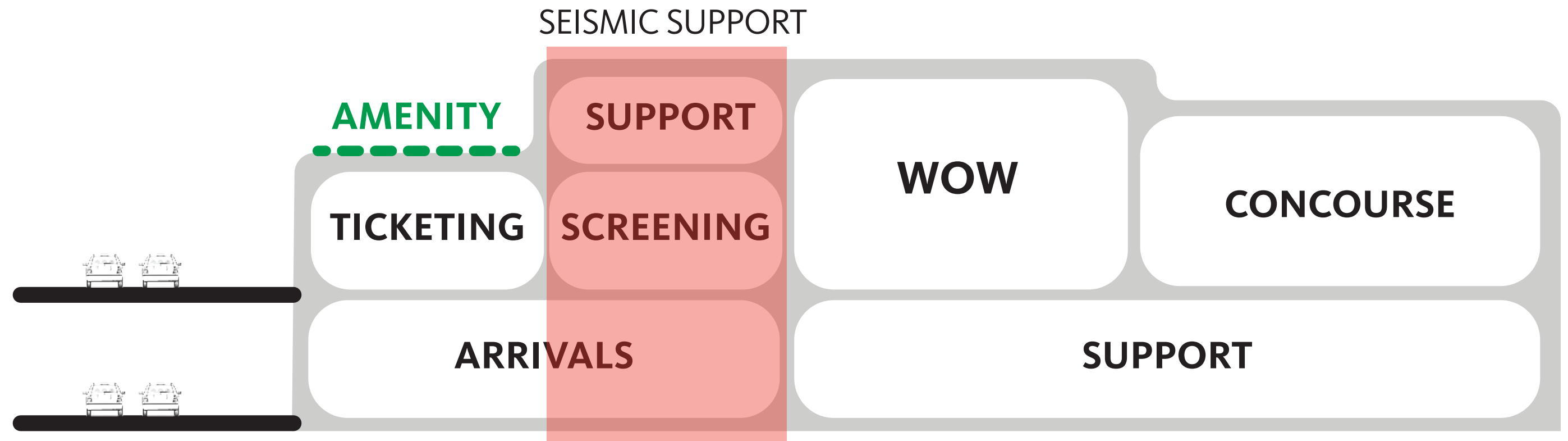
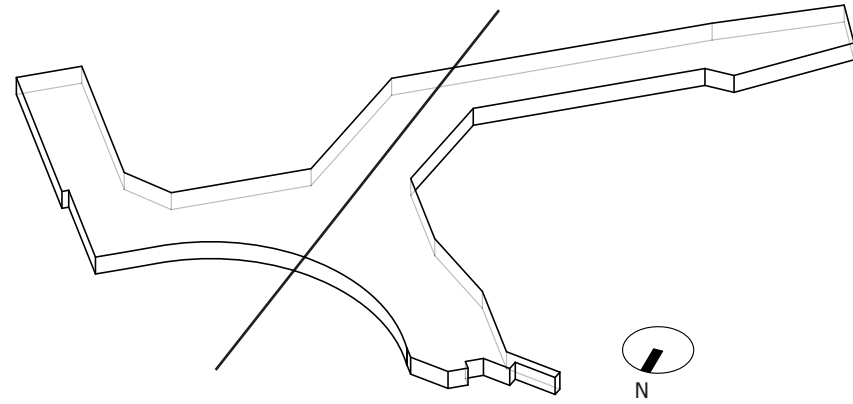


PROGRAMMING  
BENEFITS

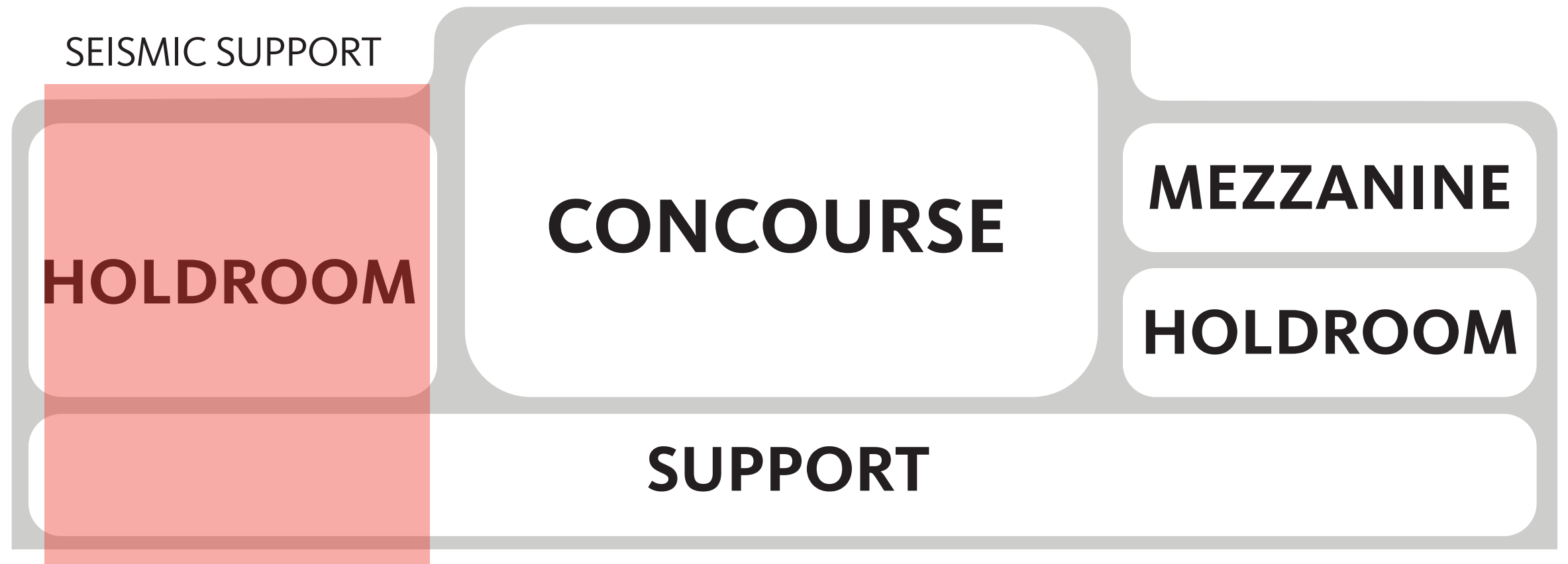
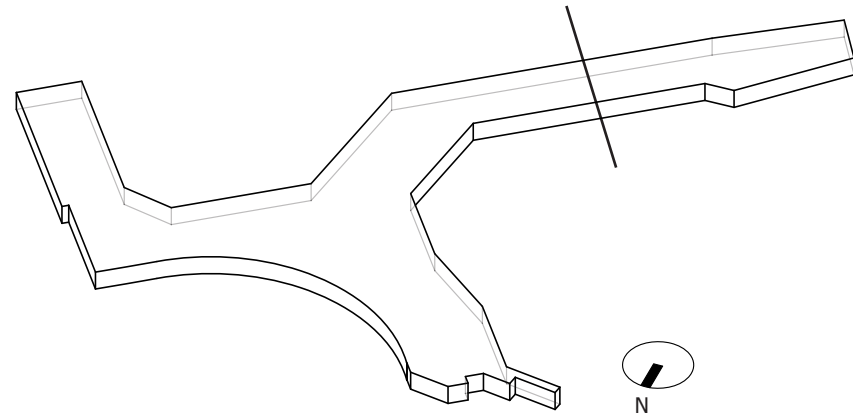
# DESIGN APPROACH LATERAL STRUCTURAL PARTI



# DESIGN APPROACH SECTIONAL RELATIONSHIPS



DESIGN APPROACH  
SECTIONAL RELATIONSHIPS





THANK YOU