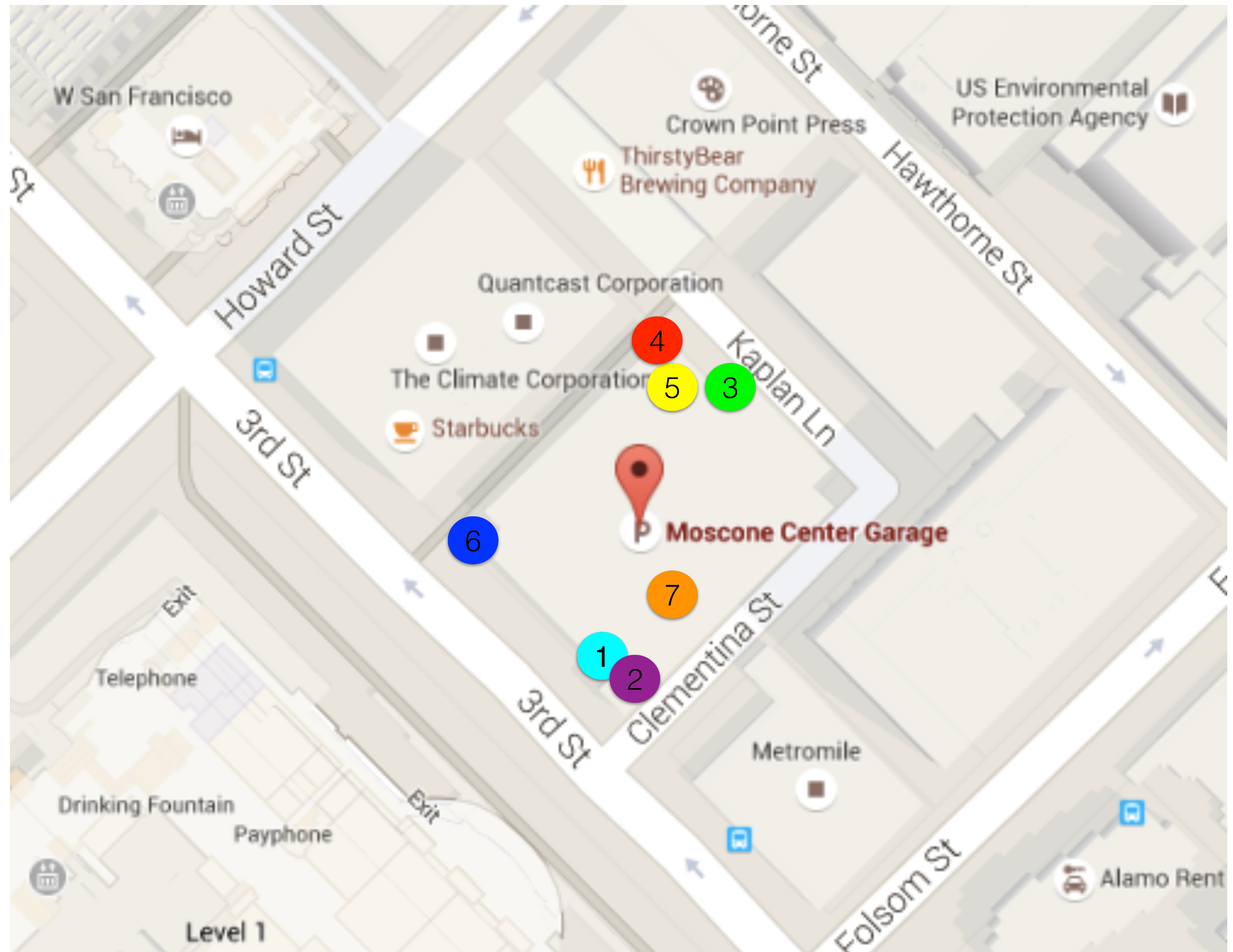


SITES UNSEEN

# MOSCONE GARAGE LOCATION MAP

Artwork will be installed:

- 1 on five walls at the top of the tower located at the southeast corner of the garage
- 2 on the upper and lower sections of one wall located on the corner of the southeast tower, facing Third Street
- 3 on a ground-level freestanding wall located at the rear of the garage, facing Kaplan Lane
- 4 on a wall located on the northwest corner of the garage, on the corner of Kaplan Lane facing Howard Street
- 5 on a low perimeter wall located on the rooftop of the garage, on the Kaplan Lane side of the building
- 6 on a portion of a breezeway structure located on the southwest corner of the garage, on the corner of 3rd St
- 7 on the interior of the garage, inside the stairwell that connects Floors 2 & 3



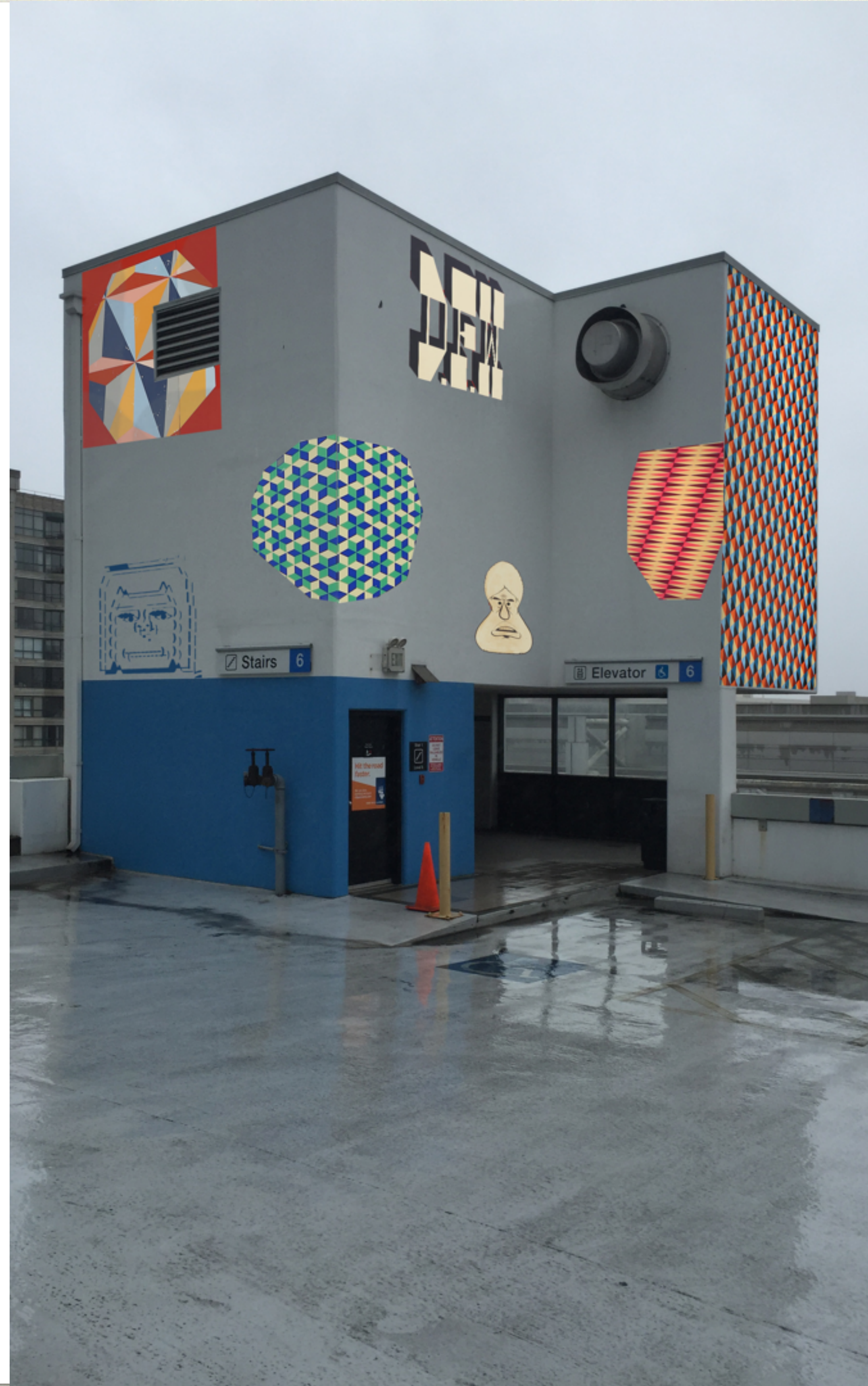
1

SITES UNSEEN

# MOSCONE GARAGE

CORNER OF CLEMENTINA ST (EAST) & 3RD ST

Artwork will be installed at the top of the tower located at the southeast corner of the garage, on five wall surfaces, three of which measure approximately 10' (W) x 15' (H), one of which is approximately 6' (W) x 15' (H), and one of which is approximately 20' (W) x 15' (H).



# MOSCONE GARAGE

CORNER OF CLEMENTINA  
STREET EAST & 3RD  
STREET

Artwork will be installed on one wall located on the upper and lower portions of the southeast tower of the garage, facing Third Street.



3

SITES UNSEEN

# MOSCONE GARAGE KAPLAN LANE

Artwork will be installed on a ground-level freestanding wall located at the rear of the garage, facing Kaplan Lane, measuring approximately 15' (W) x 7' (H)



# MOSCONE GARAGE

CORNER OF KAPLAN  
LANE & WALKWAY TO  
3RD ST

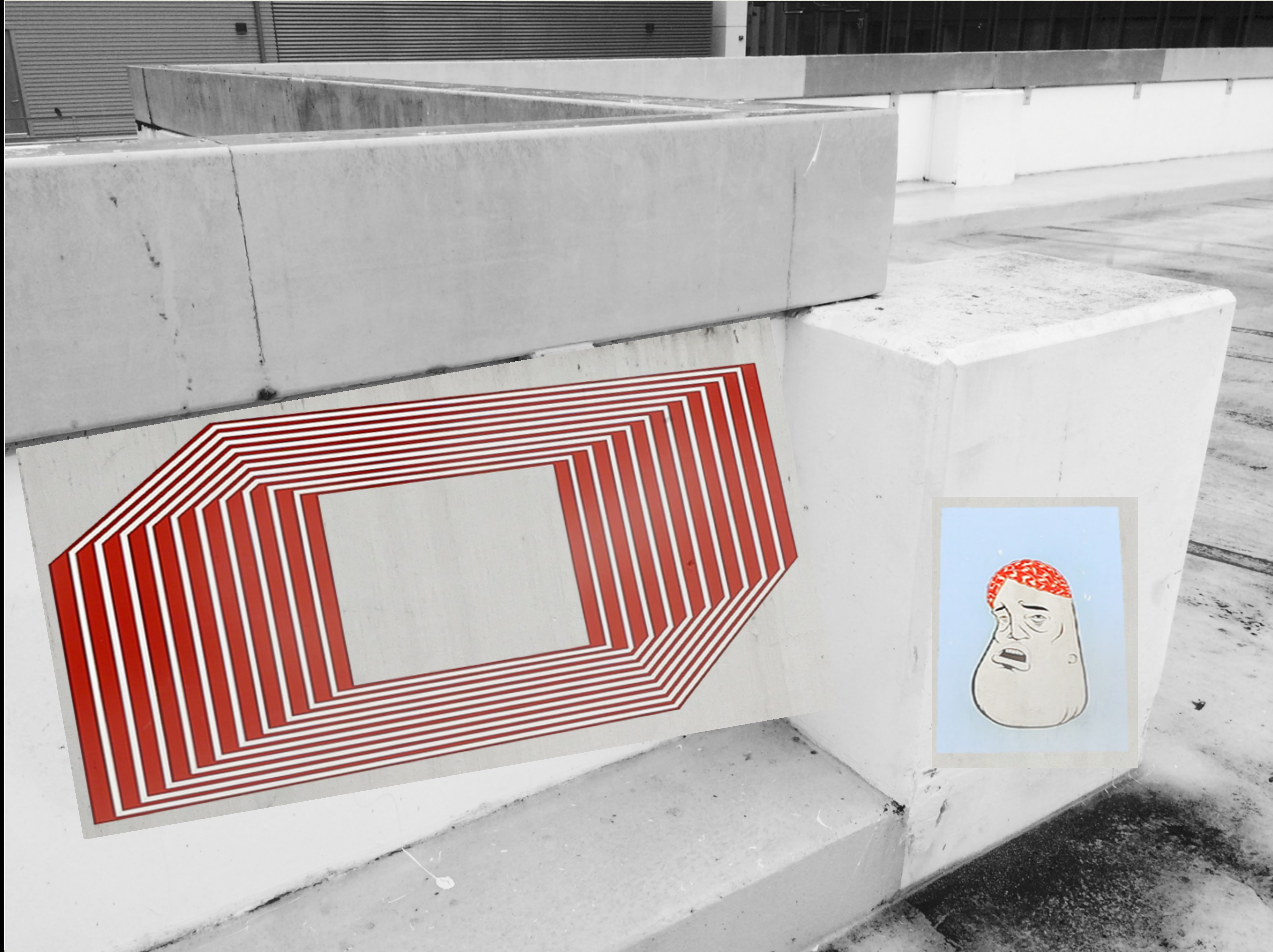
Artwork will be installed on the full length of a wall located on the northwest corner of the garage, on the corner of Kaplan Lane facing Howard Street, measuring approximately 12' (W) x 55' (H)



5

SITES UNSEEN

**MOSCONE GARAGE**  
ROOFTOP, FACING  
KAPLAN LANE



Smaller elements of the artwork will be installed on a low perimeter wall located on the rooftop of the garage, on the Kaplan Lane side of the building. approximately 4' (W) x 2' (H)

# MOSCONE GARAGE

## CORNER OF WALKWAY & 3RD STREET

Artwork will be placed on a portion of a breezeway structure located on the southwest corner of the garage, on the corner of 3rd Street, installed starting at approximately 10' above street level and extending to a total height of approximately 15' and a width of approximately 20'



7

SITES UNSEEN

# MOSCONE GARAGE INTERIOR STAIRCASE



Smaller elements of the artwork will be hand-painted by the artist on the interior of the garage, inside the stairwell that connects Floors 2 & 3.



Locations 1, 2, 3, 5, 6, and 7 and part of Location 4 will be executed in acrylic and spray paint using vinyl stencils, and will be finished with a hard clear coat to protect the artworks from damage and provide UV protection. An anti-graffiti and urine-repellent coat will be applied on top of the hard clear coat to facilitate cleaning and maintenance.

Selected graphic elements in Location 4 will be executed on a thin (approximately 3/8") plywood substrate primed and painted on all sides as the base for the upper artwork. The artwork will be painted on the boards and then put them in place one at a time. Holes will be drilled in the wood panels and a hammer drill used to penetrate the concrete about 2 inches deep. Wedge anchors with washers or lag shields with screws will be used to hold the wood to the the concrete.

