

SEP *Future*

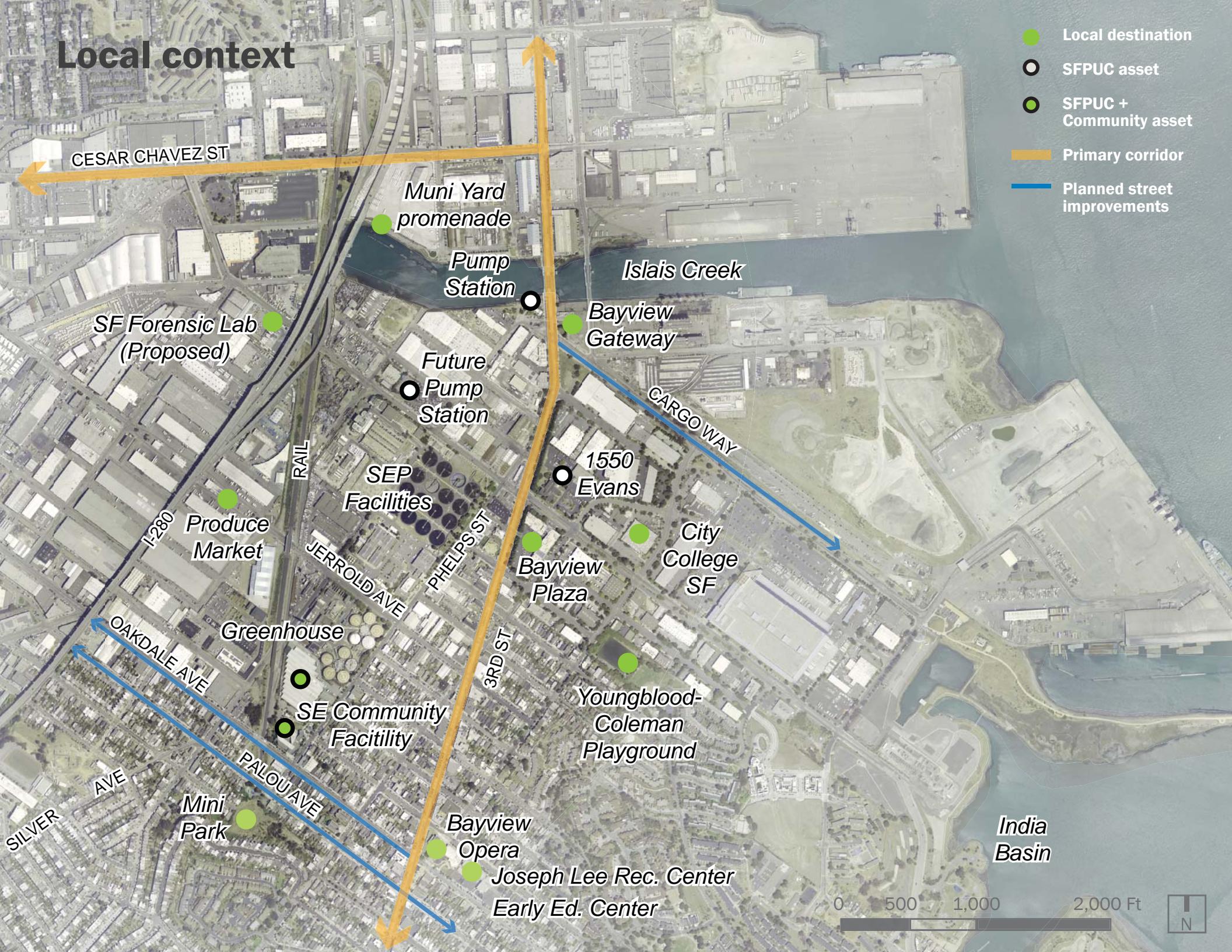
CAMPUS PLAN

March 2017



Local context

- Local destination
- SFPUC asset
- SFPUC + Community asset
- ▬ Primary corridor
- ▬ Planned street improvements



SEP Future

Design workshop

AECOM | PARSONS
JOINT VENTURE

SE
S | FUTURE

FEB 26-27
YOU'RE
INVITED

SE
S | FUTURE

A VISION FOR SOUTHEAST
SAN FRANCISCO
YOU ARE INVITED TO A DESIGN
WORKSHOP (FEB 26-27) TO
DEVELOP NEIGHBORHOOD
DESIGN ALTERNATIVES FOR AN
IMPORTANT URBAN ENCLAVE.

SEP Future

Design workshop



How can we best fit the resource recovery facility into the urban fabric of our neighborhood?

What urban design interventions can help harmonize our existing diverse uses and improve the experience of our neighbors?

Can City assets be used more efficiently to create new opportunities from which the entire community can benefit?

SEP Future

Design workshop



Key objectives:

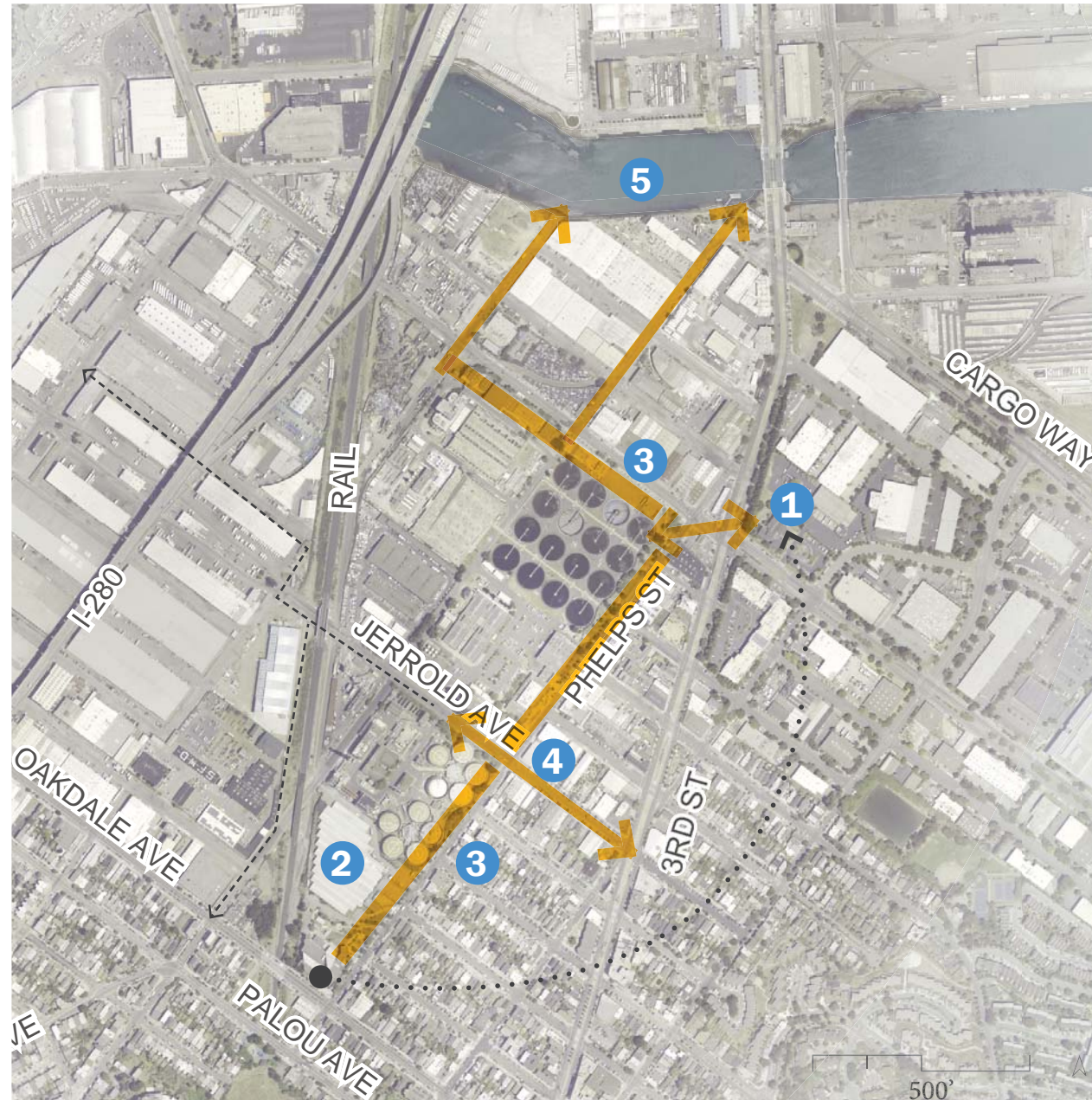
- To generate positive lasting transformation in the area and develop better spaces for day-to-day users.
- Demonstrate the SFPUC's investment in the community.
- Reach out to the community and generate positive momentum for the project.
- Maximize the PUC property assets and create new opportunities for the SFPUC and the community.
- Develop future partners in the process to transform this area.

SEP Future

Design workshop

Alternatives considered

- 1 Relocation of the Southeast Community Facility to 1550 Evans Ave.
- 2 Mitigation requirements and the existing greenhouses
- 3 Activation of the SEP perimeter
- 4 Jerrold Avenue accessibility
- 5 Stewardship of Islais Creek



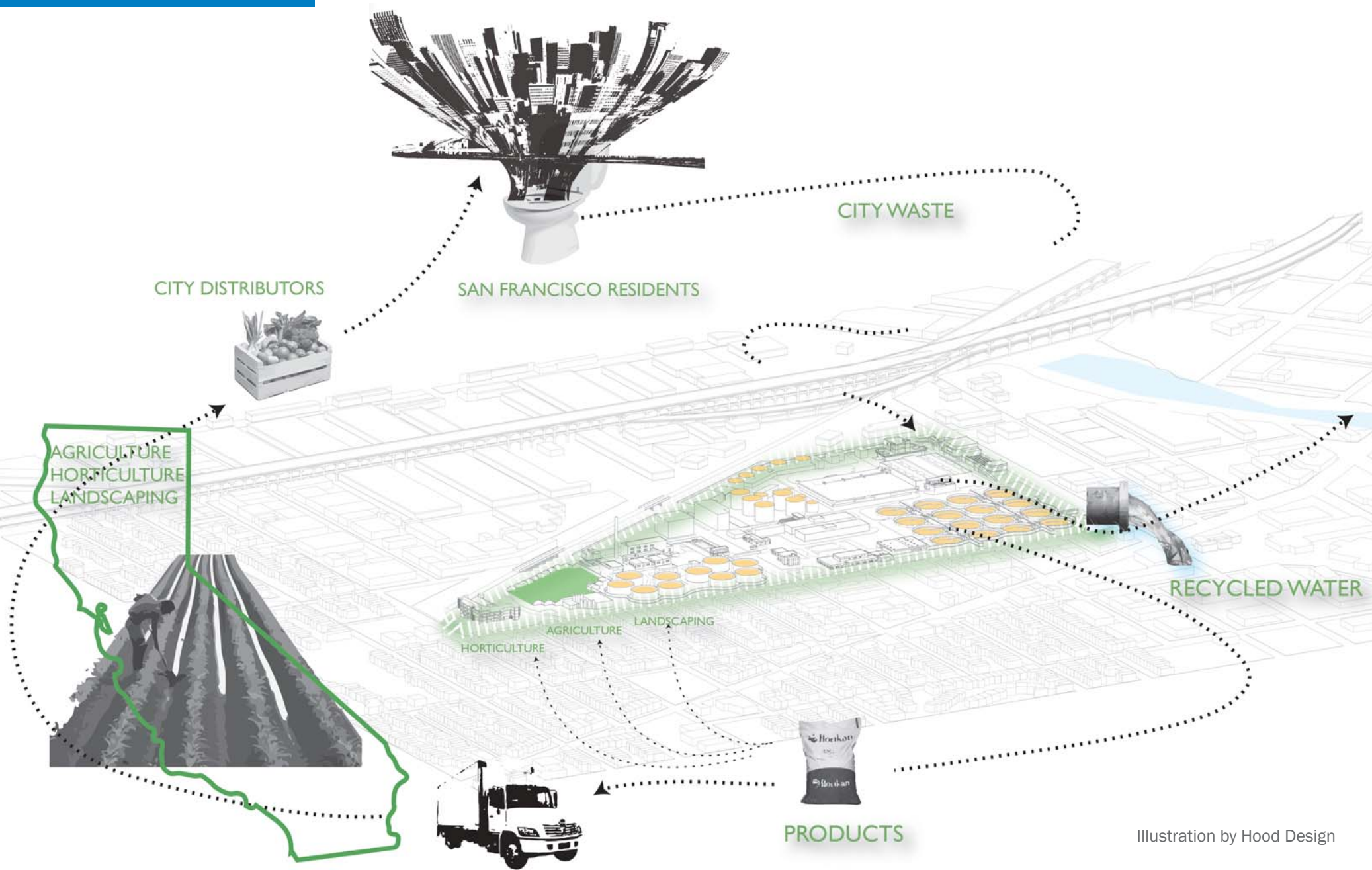
SEP Future

COMMUNITY

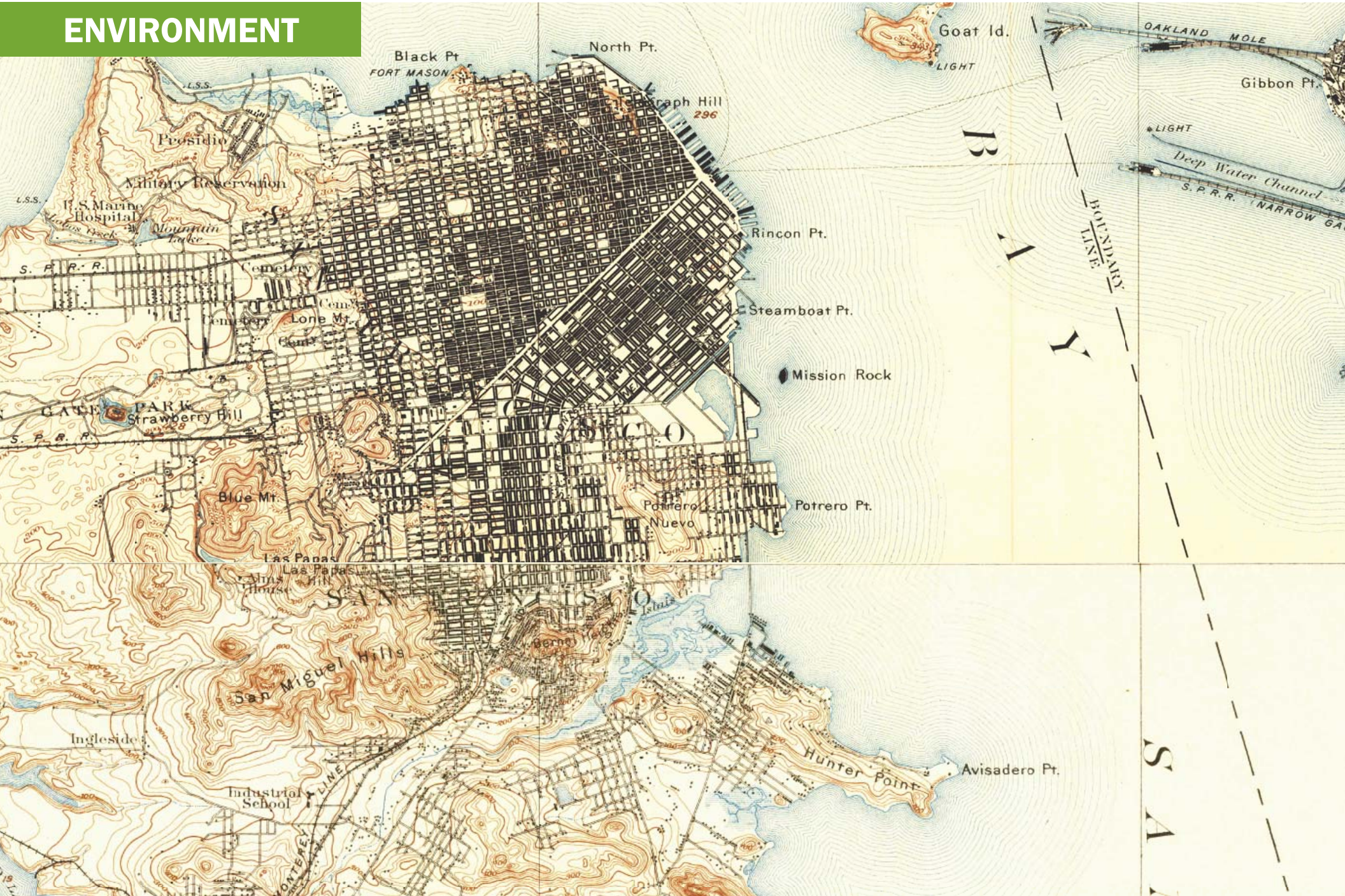


SEP Future

TECHNOLOGY



ENVIRONMENT



SEP Future

A place of confluence

COMMUNITY/ PEOPLE

learning + engagement

TECHNOLOGY/ PROCESS

engineering + innovation

ENVIRONMENT/ PLACE

biophysical + built

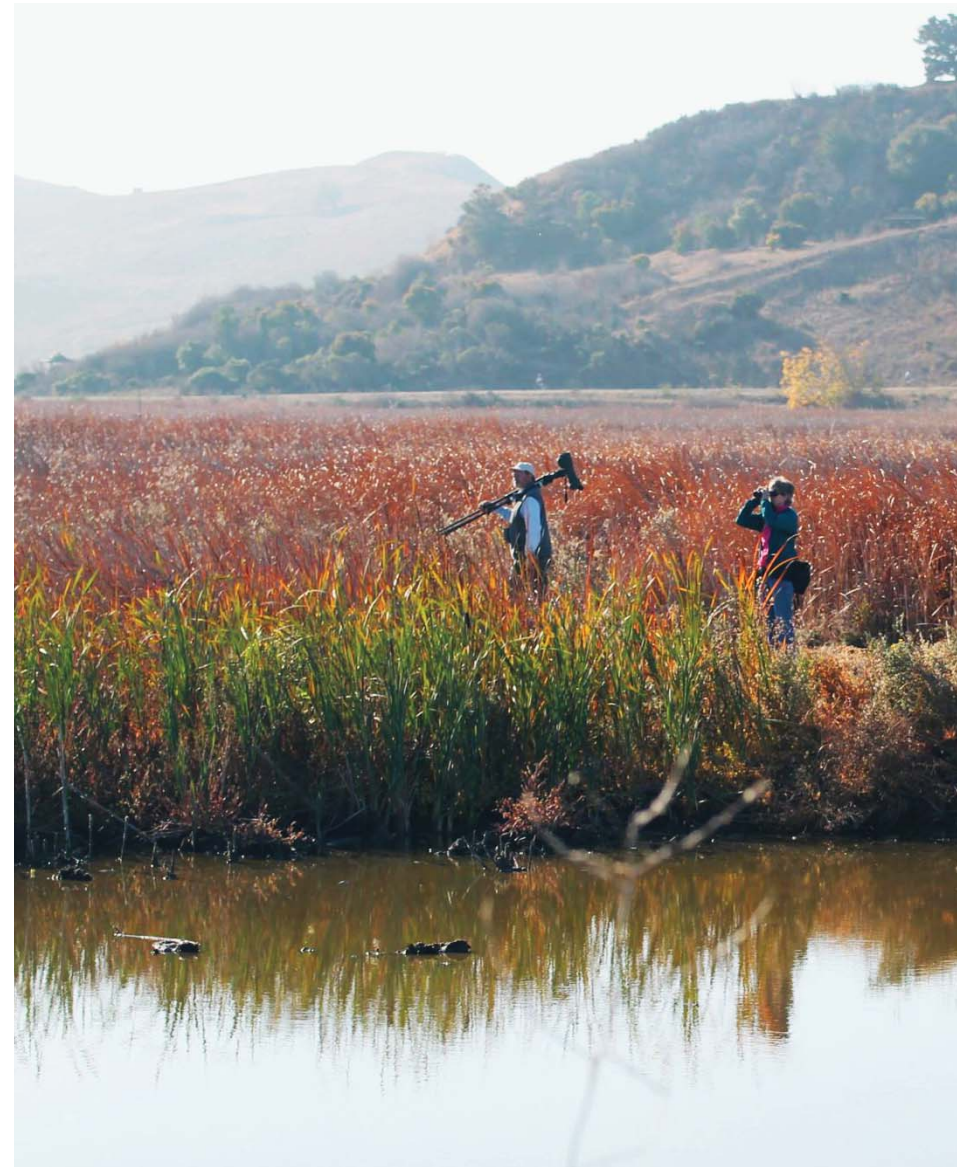


SEP Future

A place of confluence



wastewater infrastructure...
...invisible, yet essential



SEP Future

A place of confluence

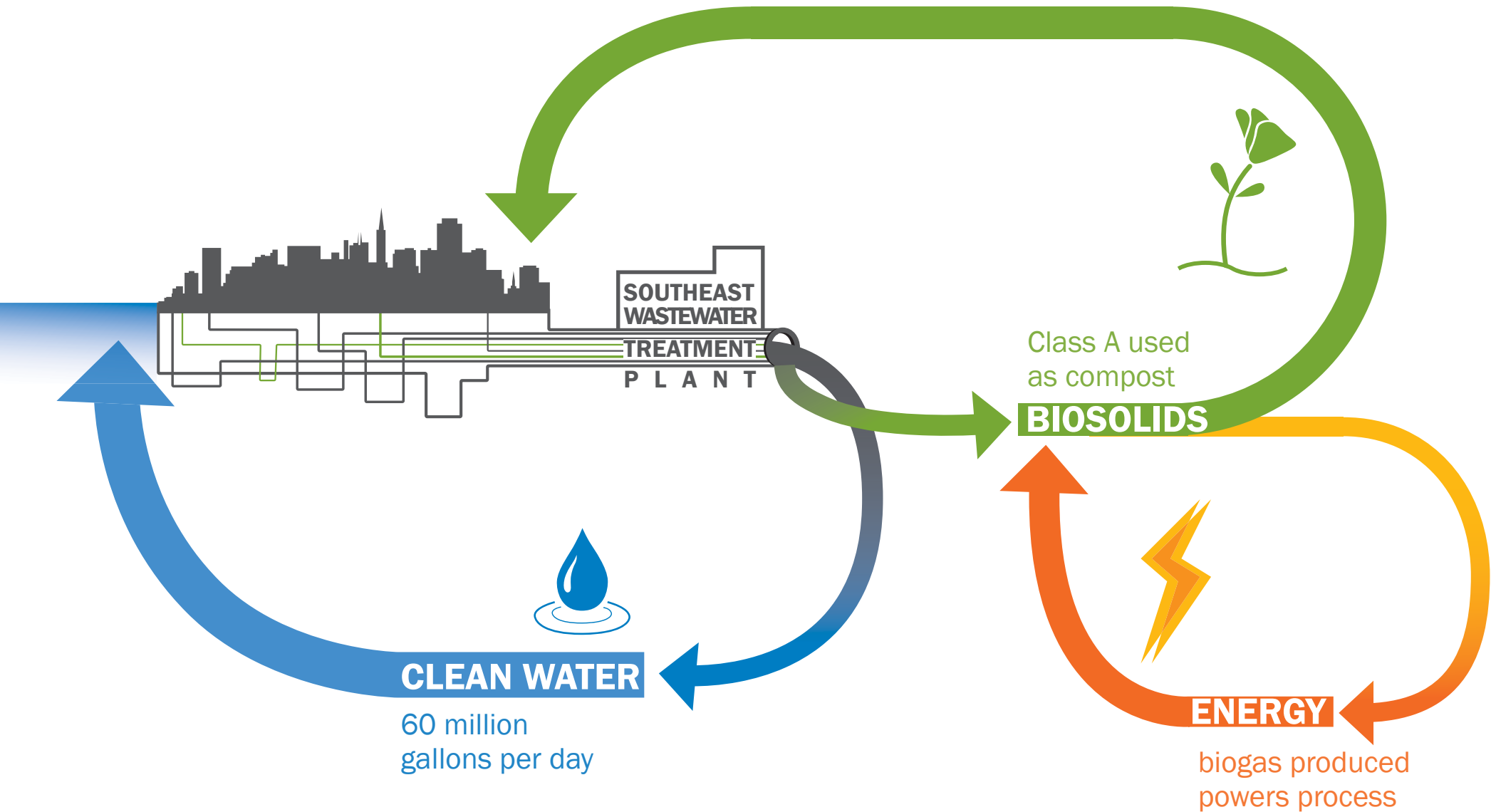
“Transform San Francisco’s oldest (and largest) wastewater treatment plant into a state of the art resource recovery facility, a City destination, a proud neighborhood asset, and an attractive workplace.”



Promoting a cultural transformation from waste to resource.

SEP Future

A place of confluence



SEP Future

A place of confluence

Delivering the vision:

- Create a campus environment and plan for future needs.
- Respond to the surrounding urban fabric and enhance programming and active uses.
- Promote efficient use of resources.
- Foster education, skills and innovation.
- Connect people, process, and place.



Promoting a cultural transformation from waste to resource.

Campus plan

Existing conditions



GREENHOUSES

2 RANKIN ST.

ISLAIS CREEK

1800 OAKDALE AVE.

SEP ADMIN. BUILDING

1550 EVANS AVE.

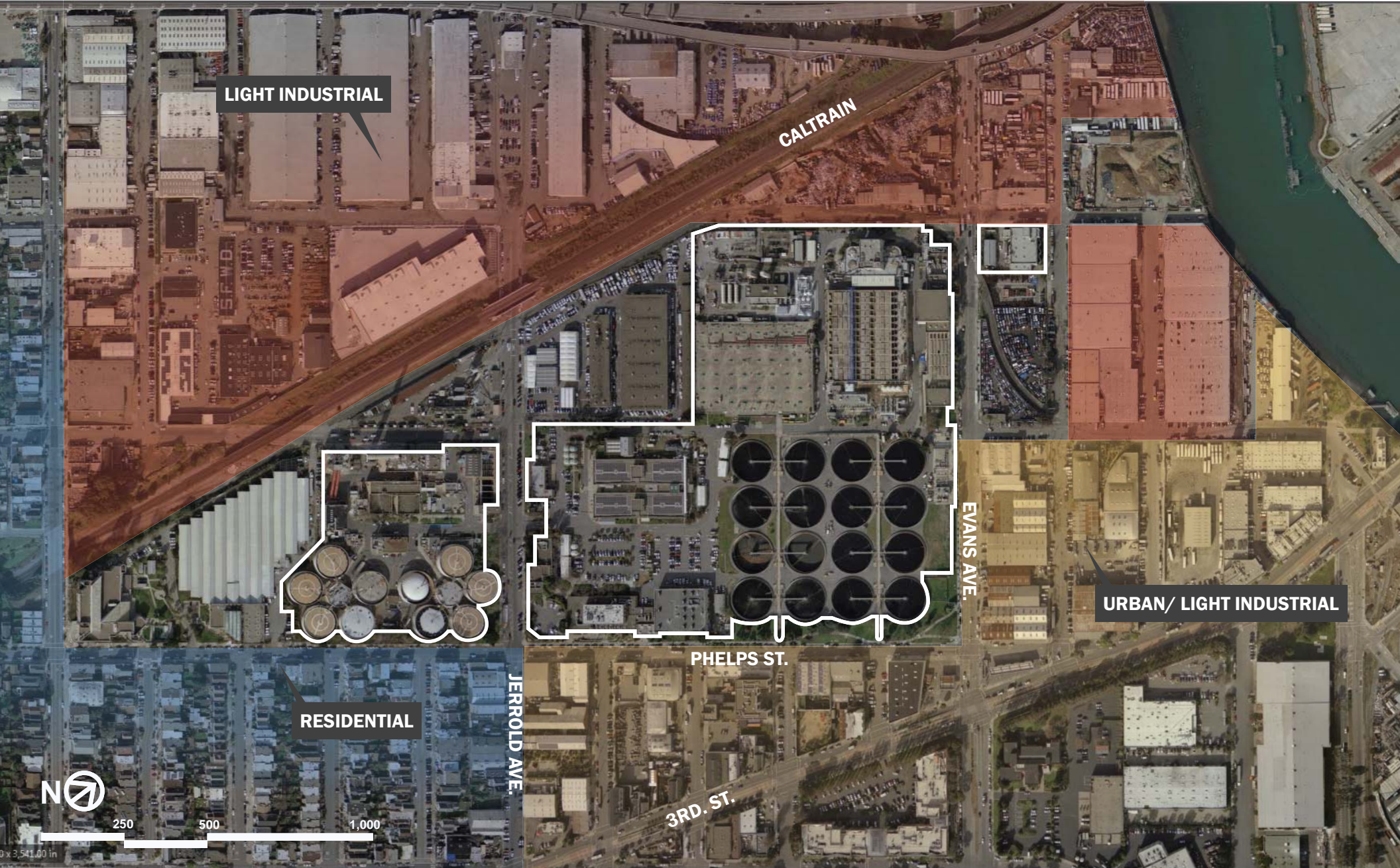


250 500 1,000

9 x 3.541,00 in

Campus plan

Location and context



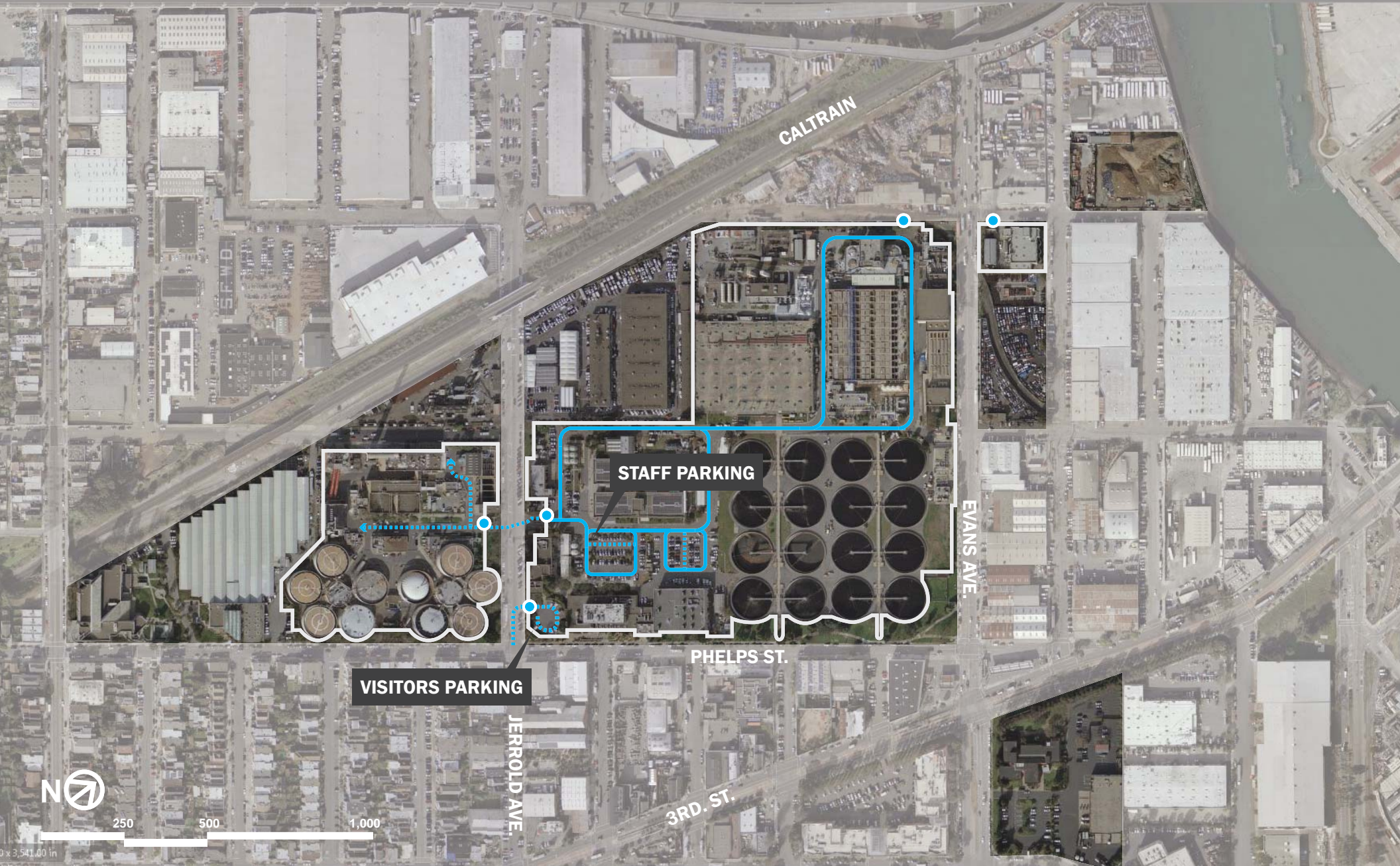
Campus plan

Existing access + circulation (heavy vehicles)



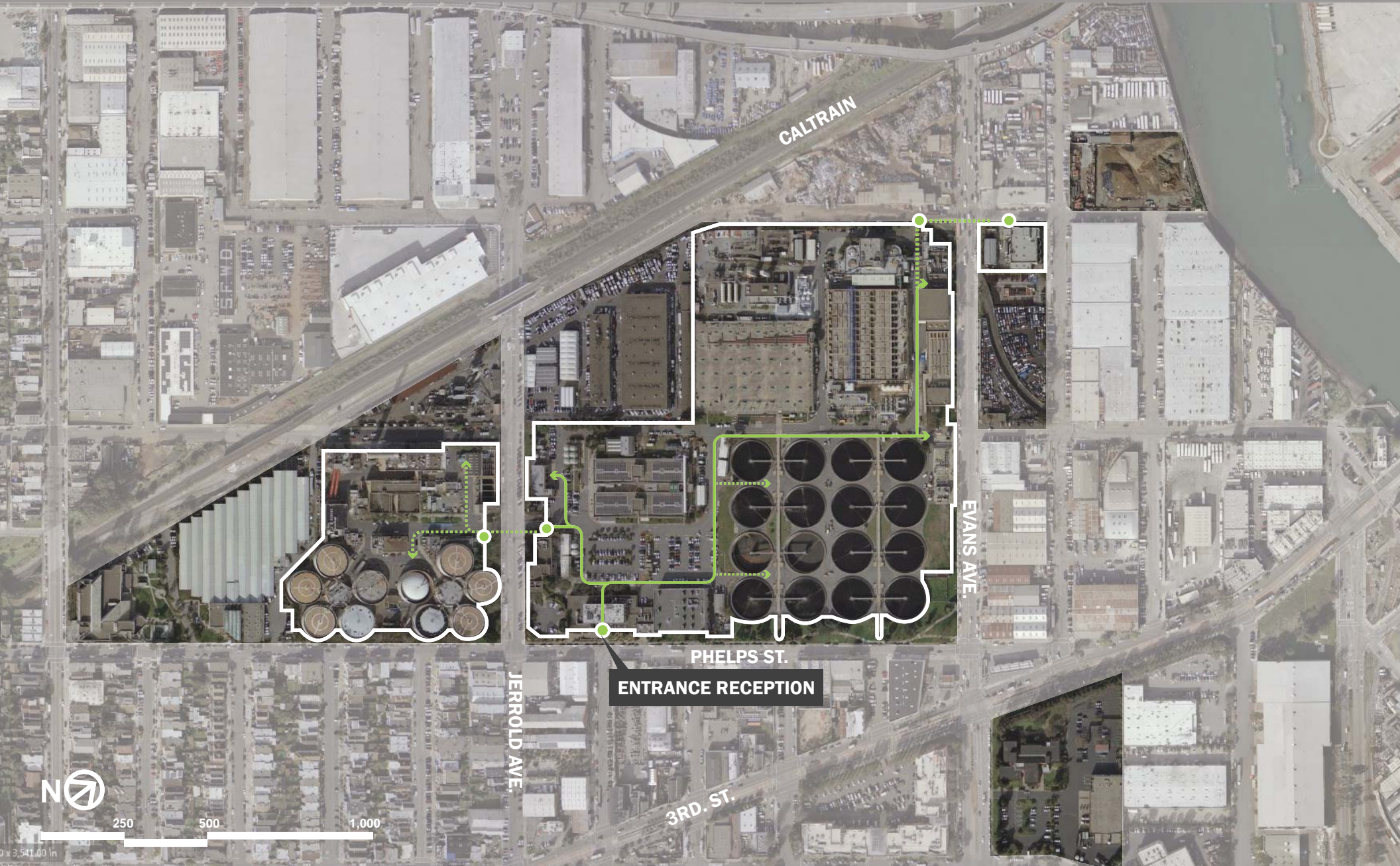
Campus plan

Existing access + circulation (SFPUC vehicles)



Campus plan

Existing access + circulation (pedestrians/bikes)



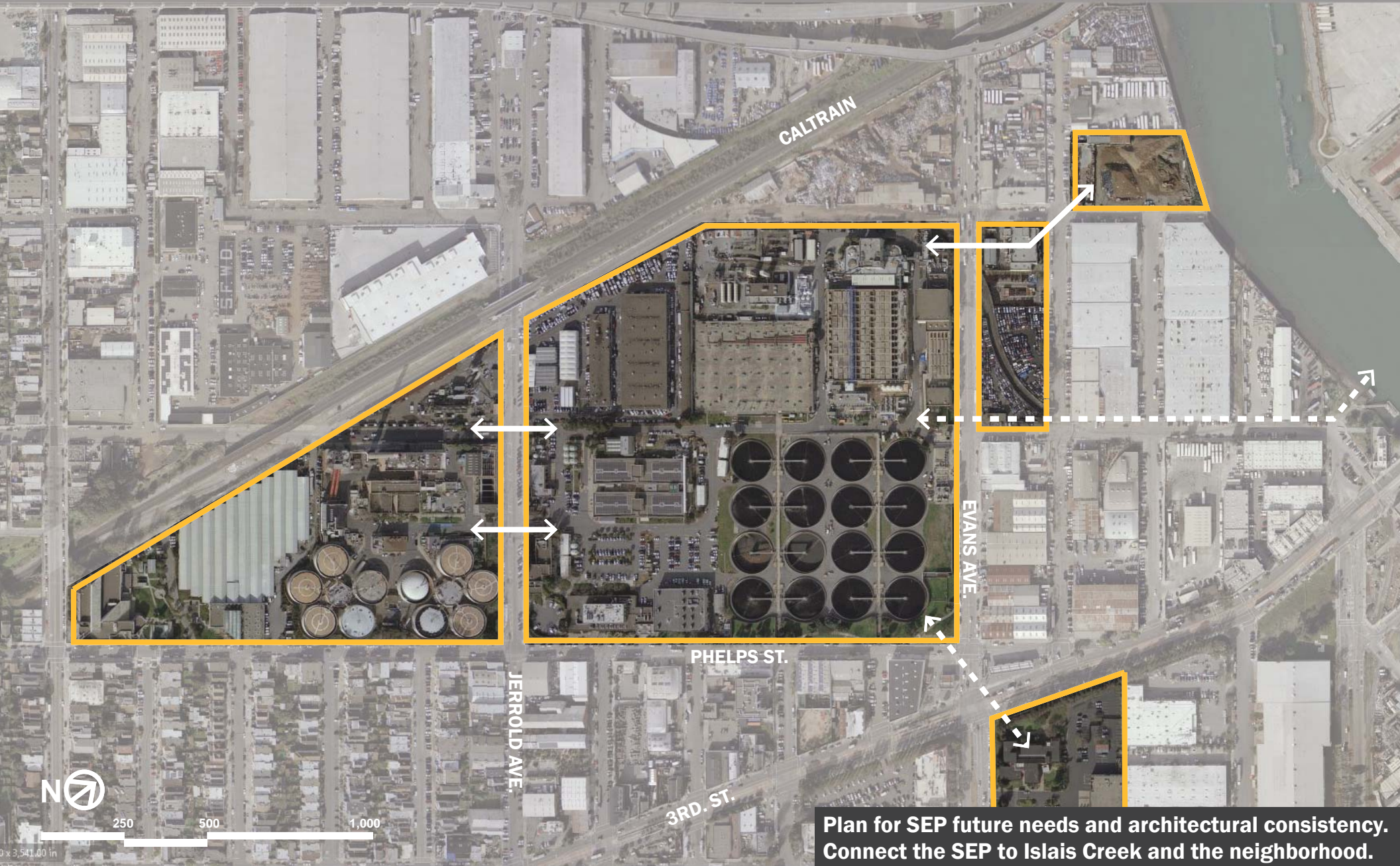
Campus plan

SFPUC parcels



Campus plan

Consolidate and connect



Plan for SEP future needs and architectural consistency. Connect the SEP to Islais Creek and the neighborhood.

Campus plan

Respond to urban context



Campus plan

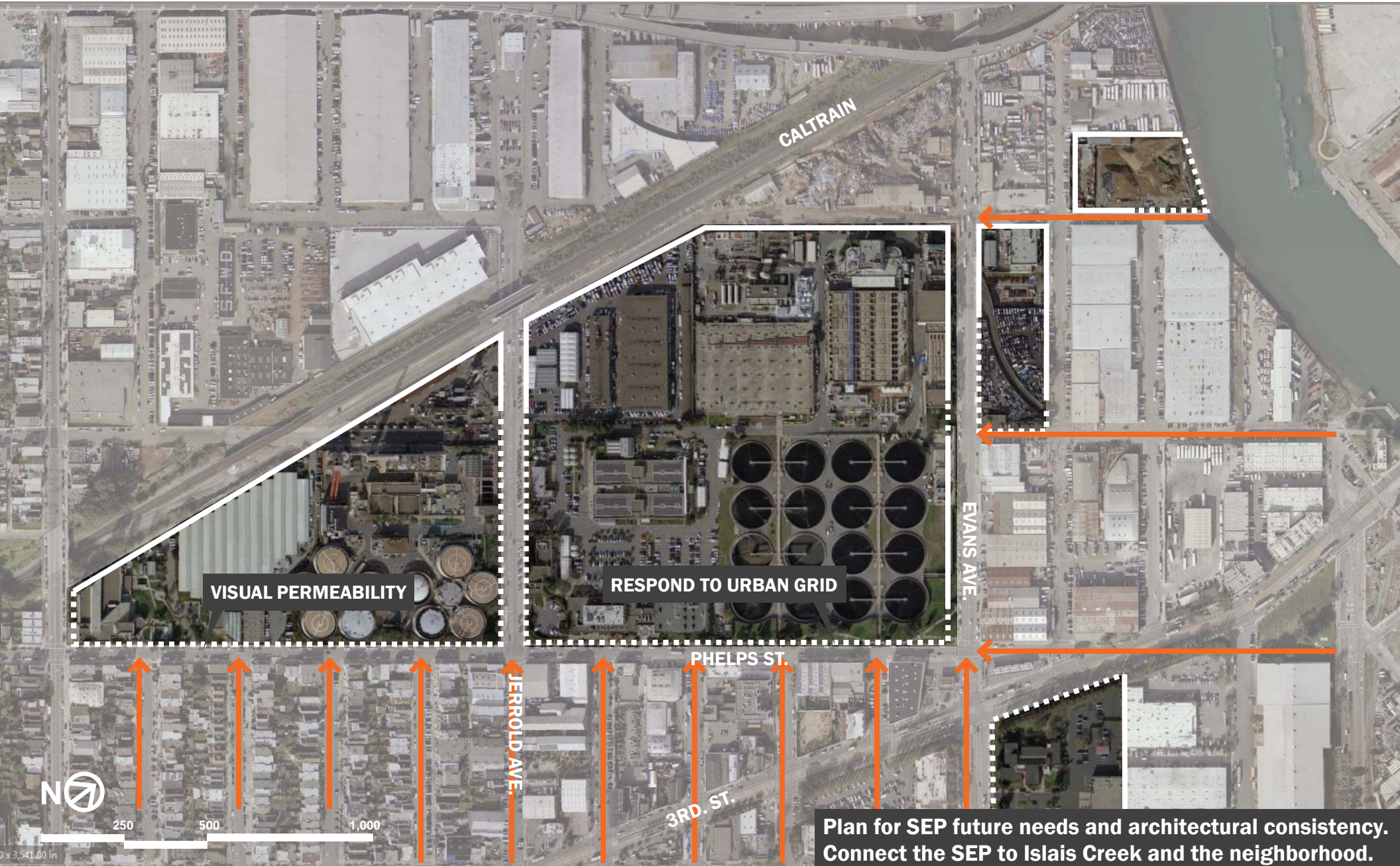
Respond to urban context



Respond to the surrounding urban fabric.
Connect the SEP to the neighborhood.

Campus plan

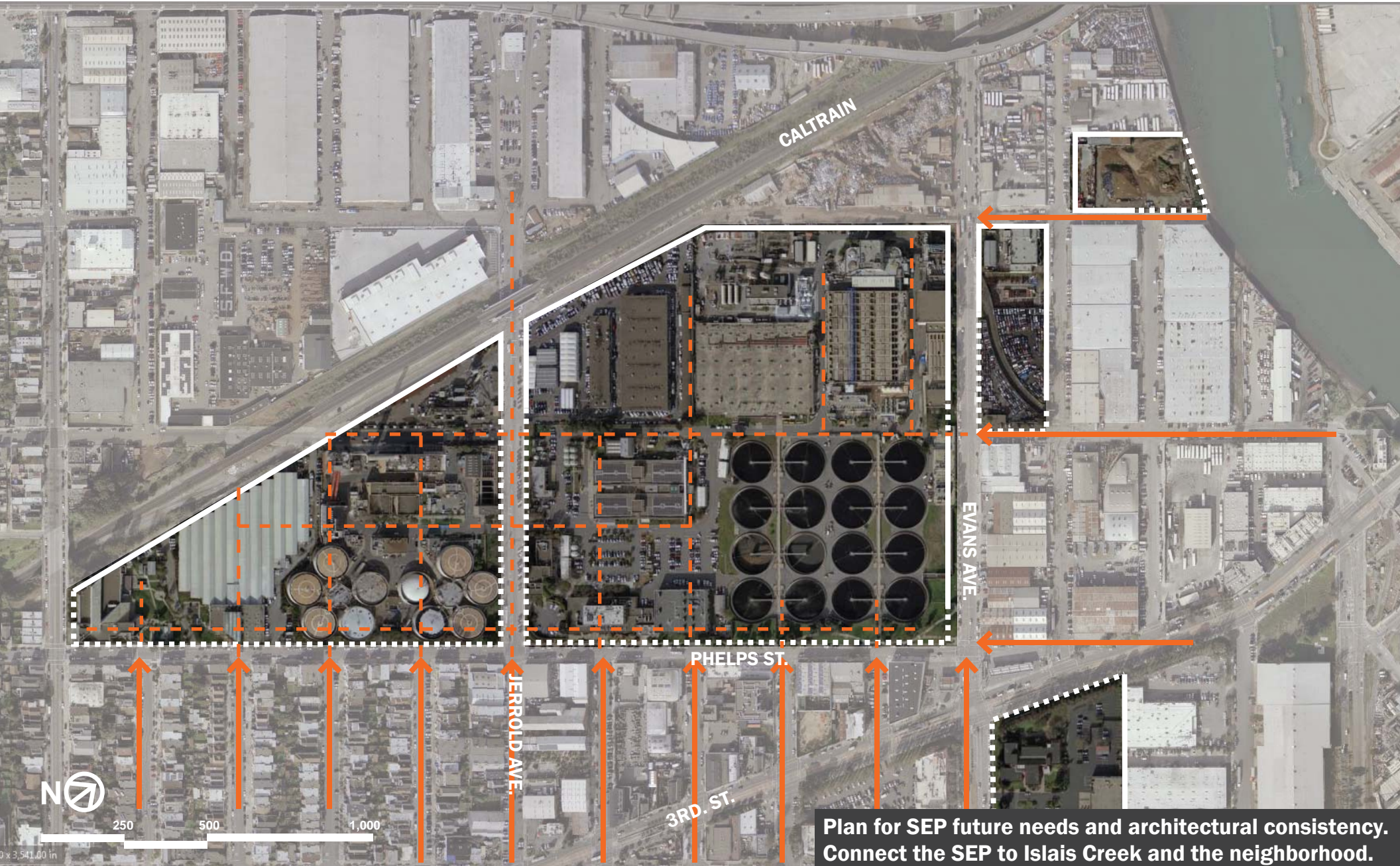
Respond to urban context



Plan for SEP future needs and architectural consistency. Connect the SEP to Islais Creek and the neighborhood.

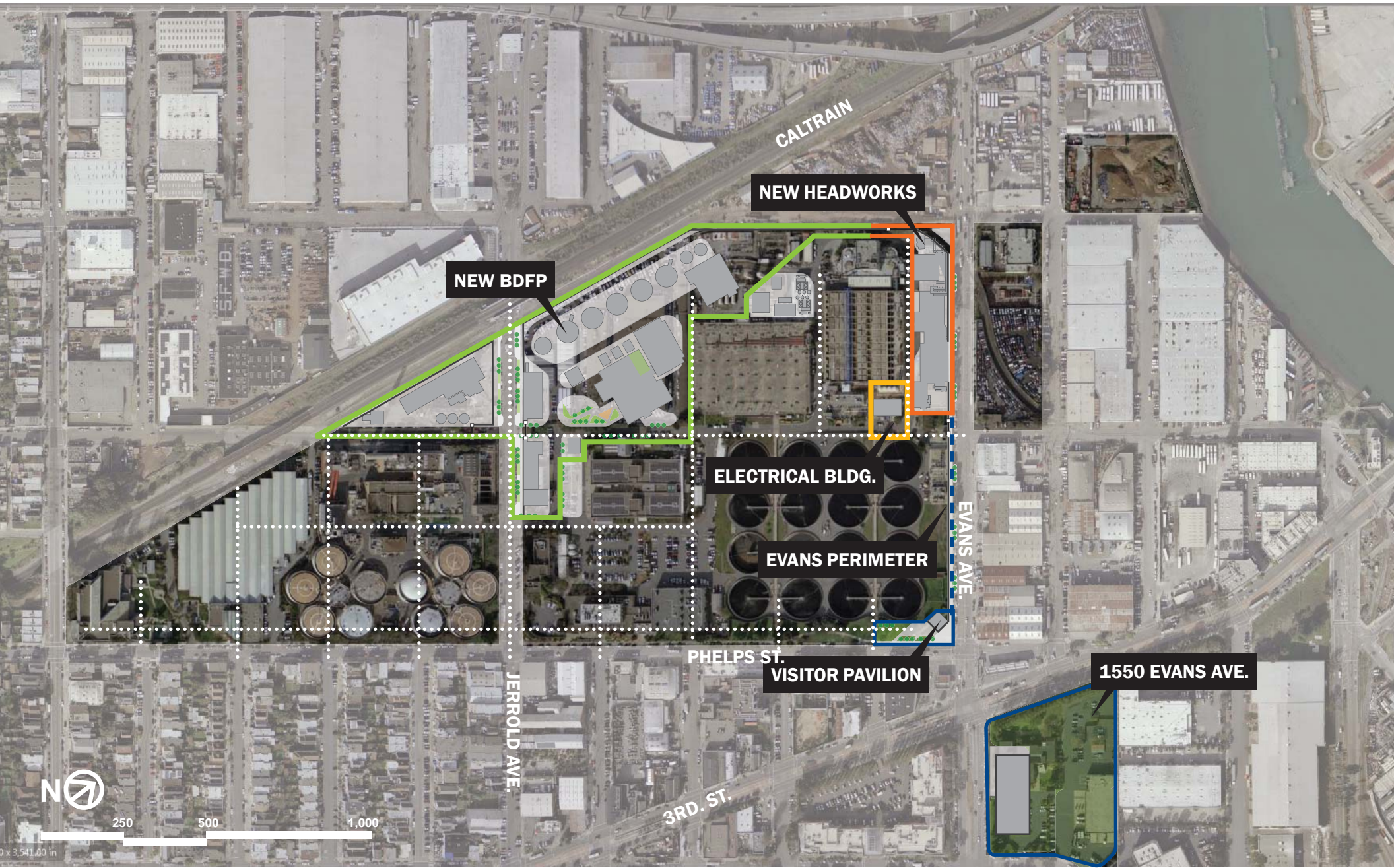
Campus plan

Respond to urban context



Campus plan

Phase 1 new buildings



CALTRAIN

NEW HEADWORKS

NEW BDFP

ELECTRICAL BLDG.

EVANS PERIMETER

EVANS AVE.

PHELPS ST.

VISITOR PAVILION

1550 EVANS AVE.

3RD ST.

JERROLD AVE.

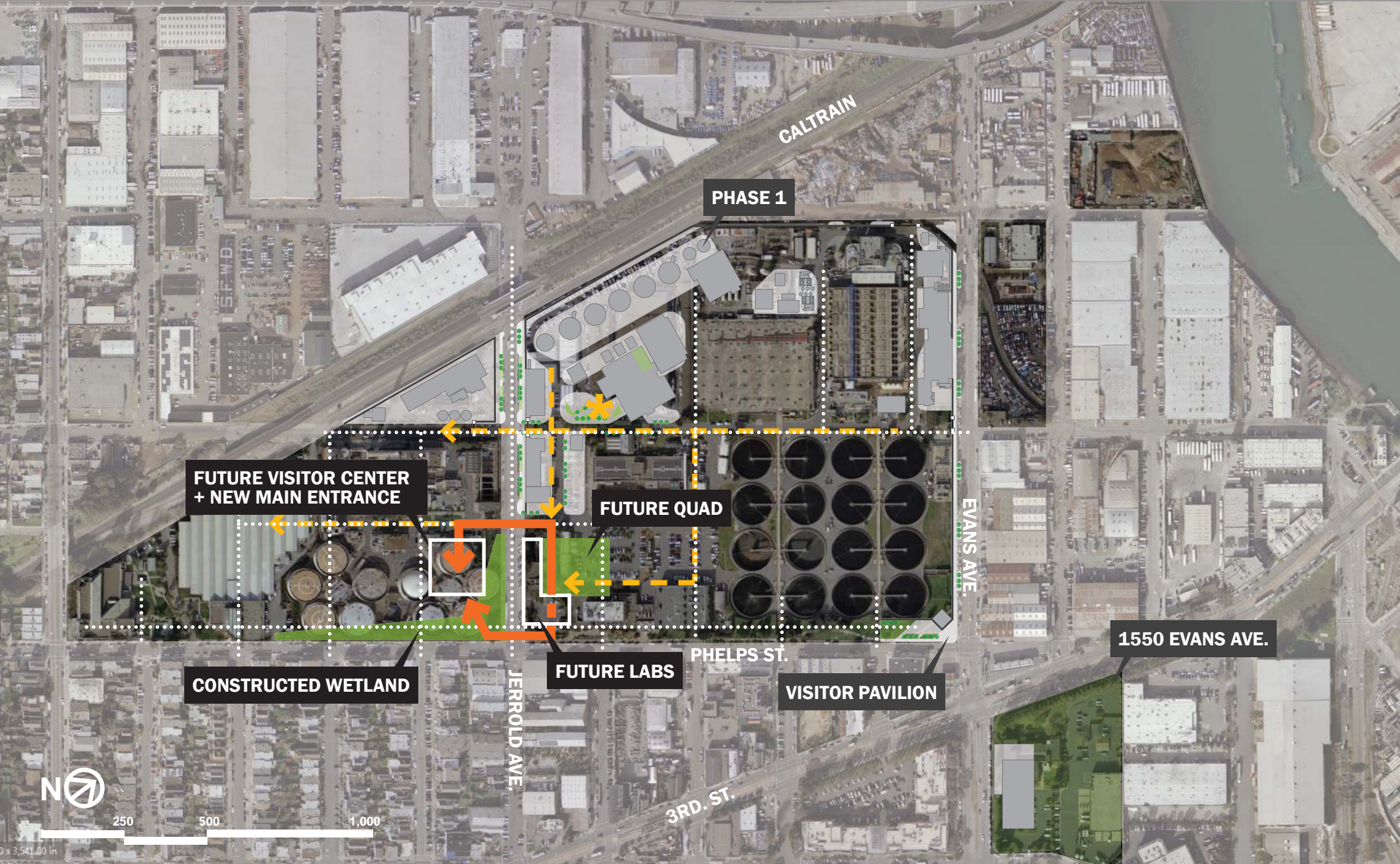


250 500 1,000

0 x 3,541.00 in

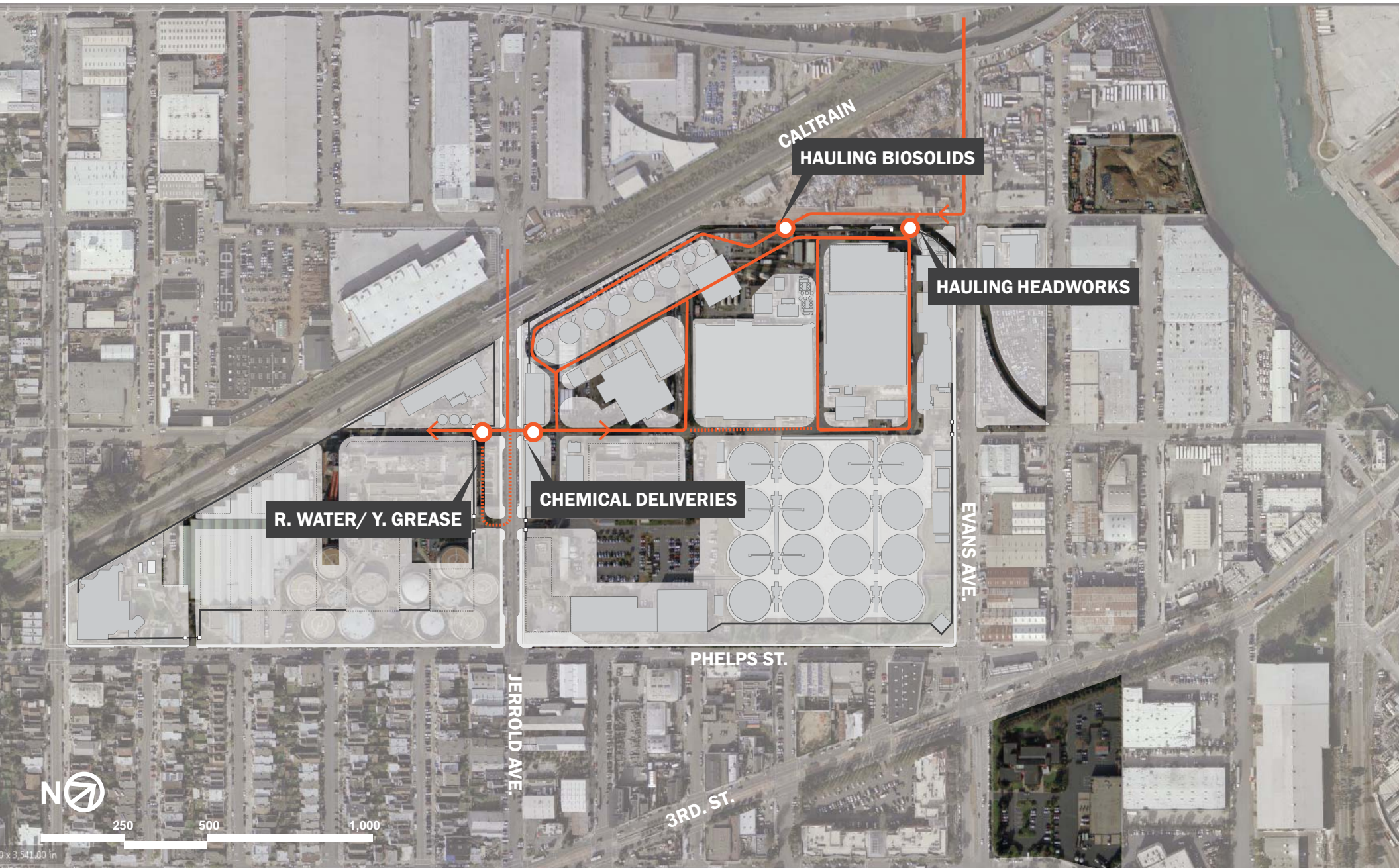
Campus plan

Future heart of the campus



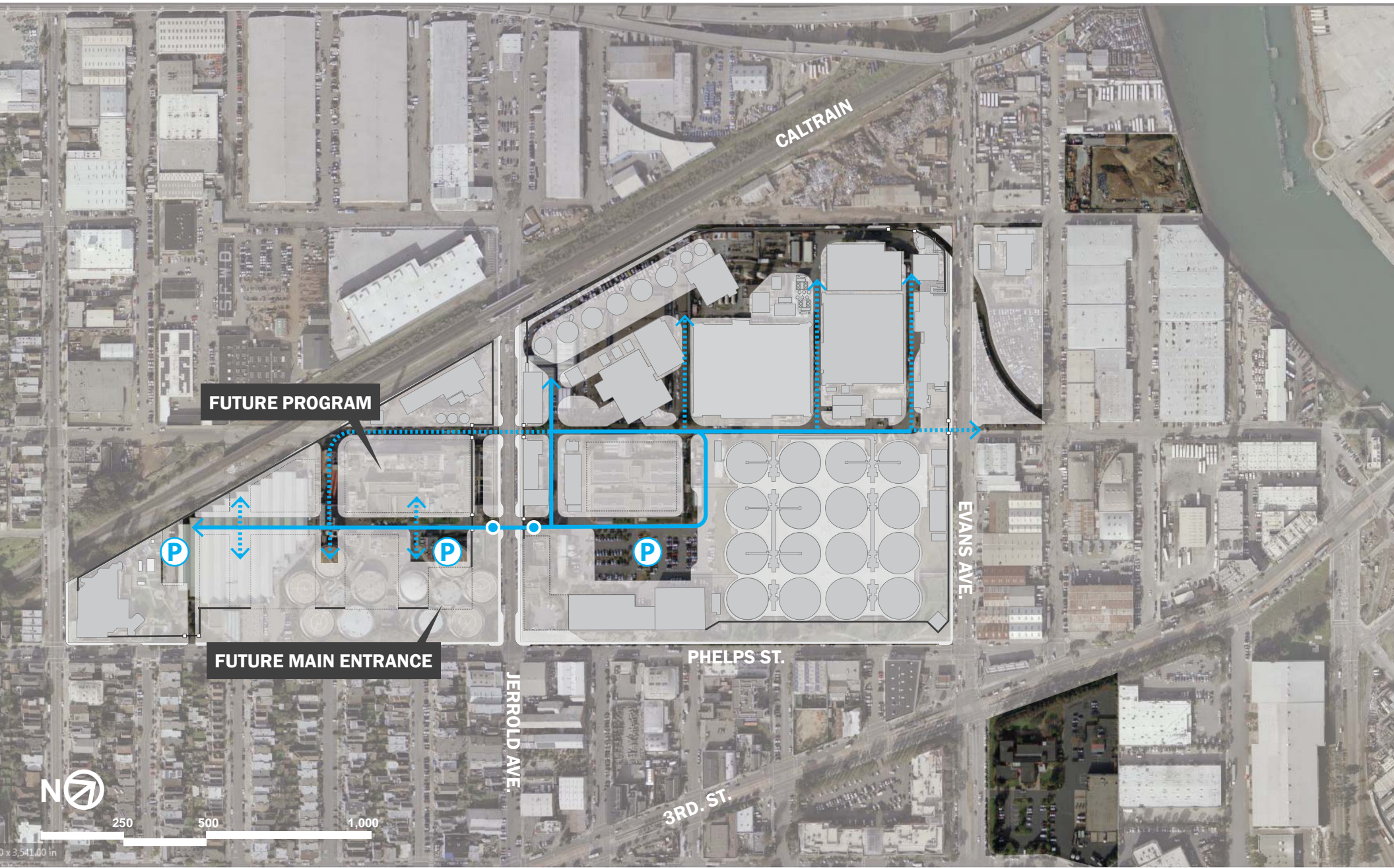
Campus plan

Access + circulation (heavy vehicles)



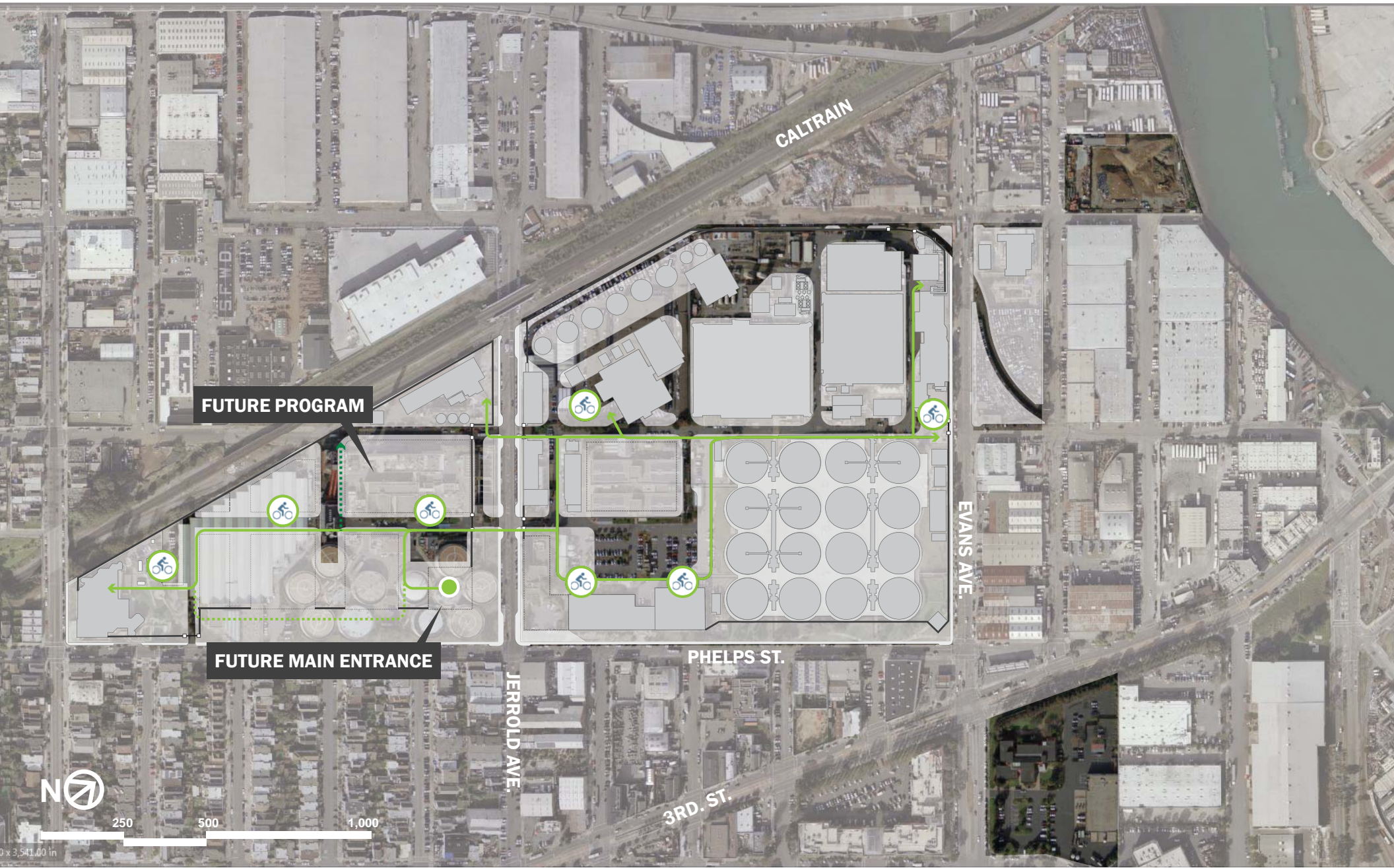
Campus plan

Access + circulation (SFPUC vehicles)



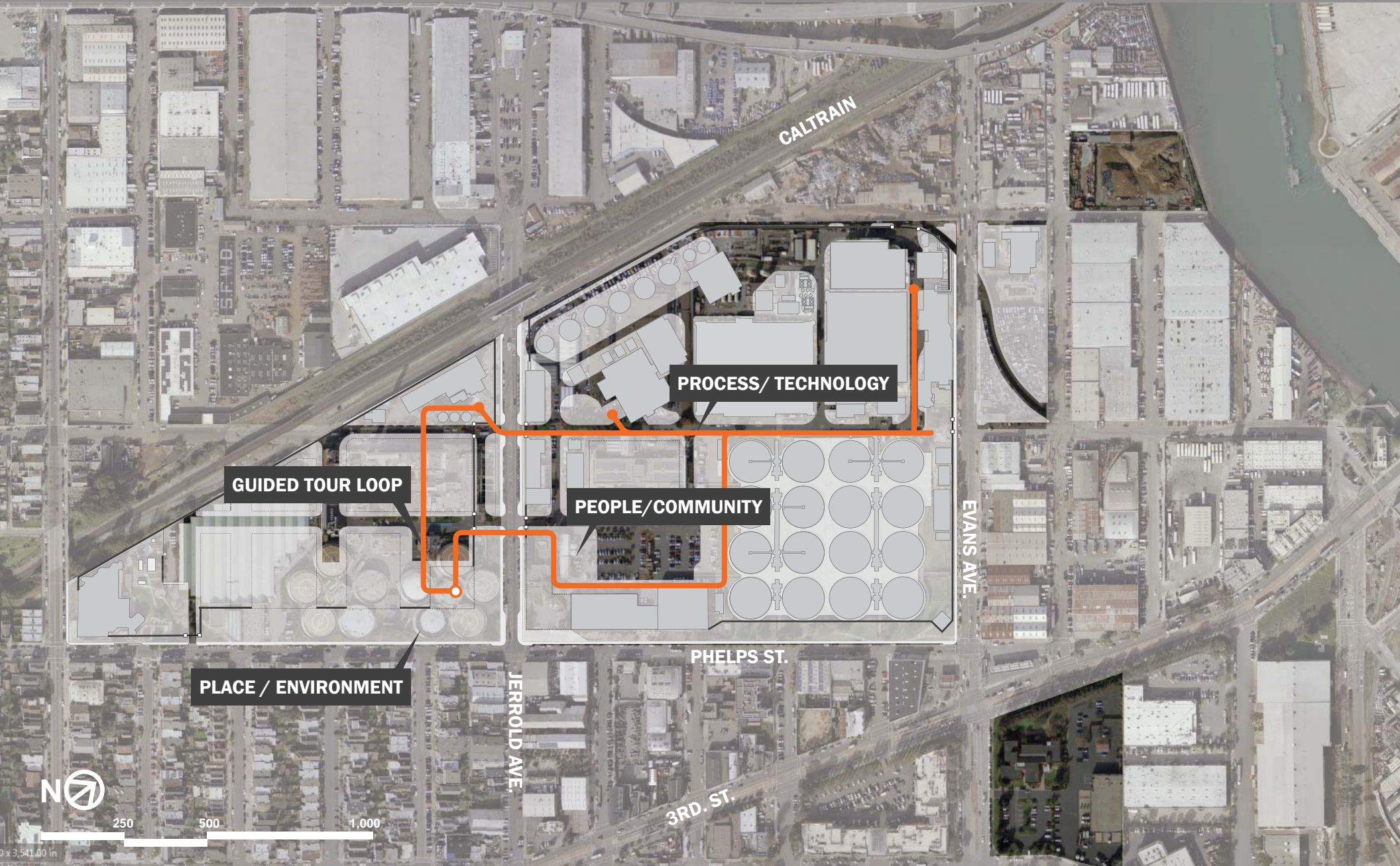
Campus plan

Access + circulation (staff pedestrian/bike)



Campus plan

Guided tour loop



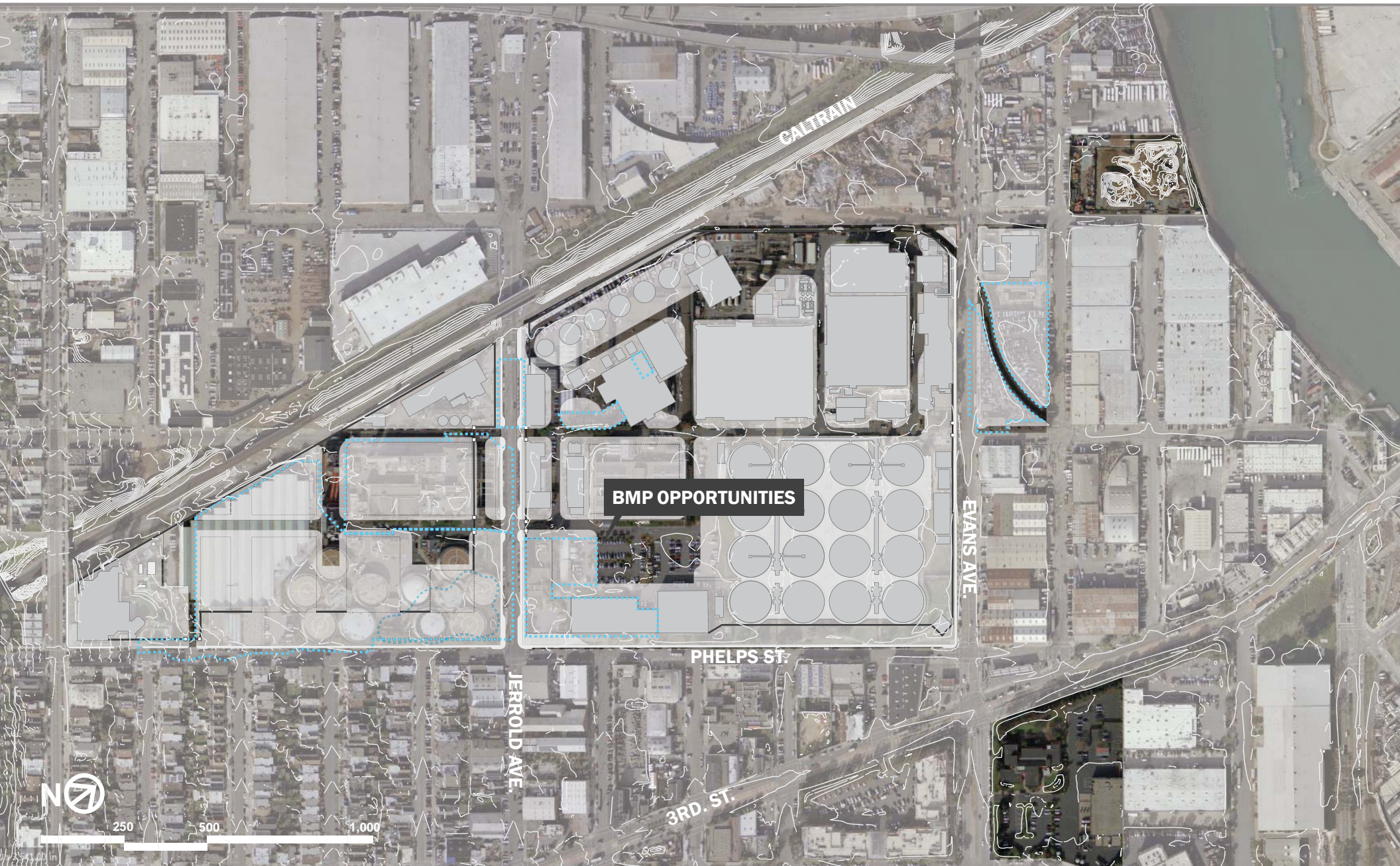
Campus plan

Neighborhood connectivity



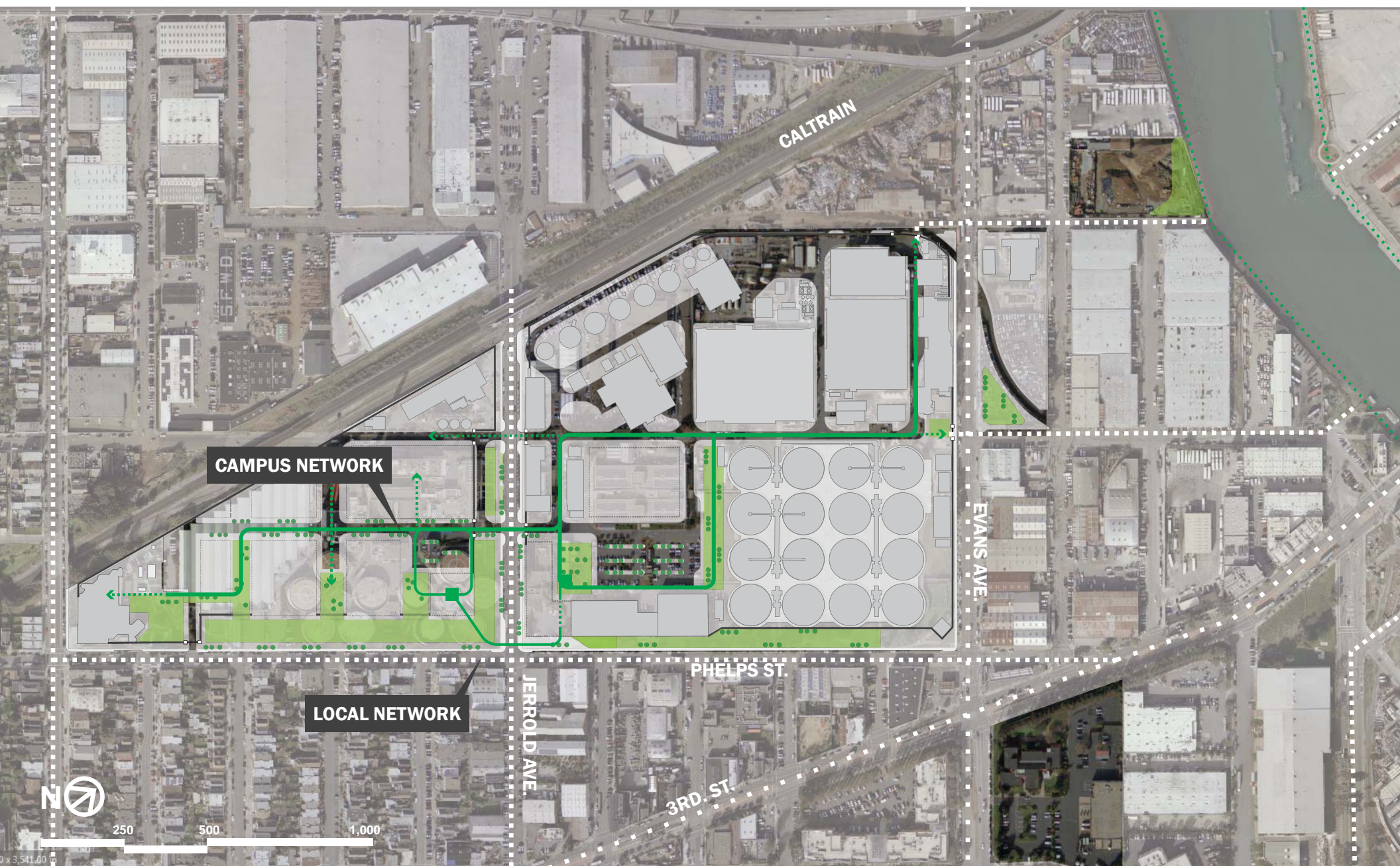
Campus plan

Stormwater strategy



Campus plan

Open space framework



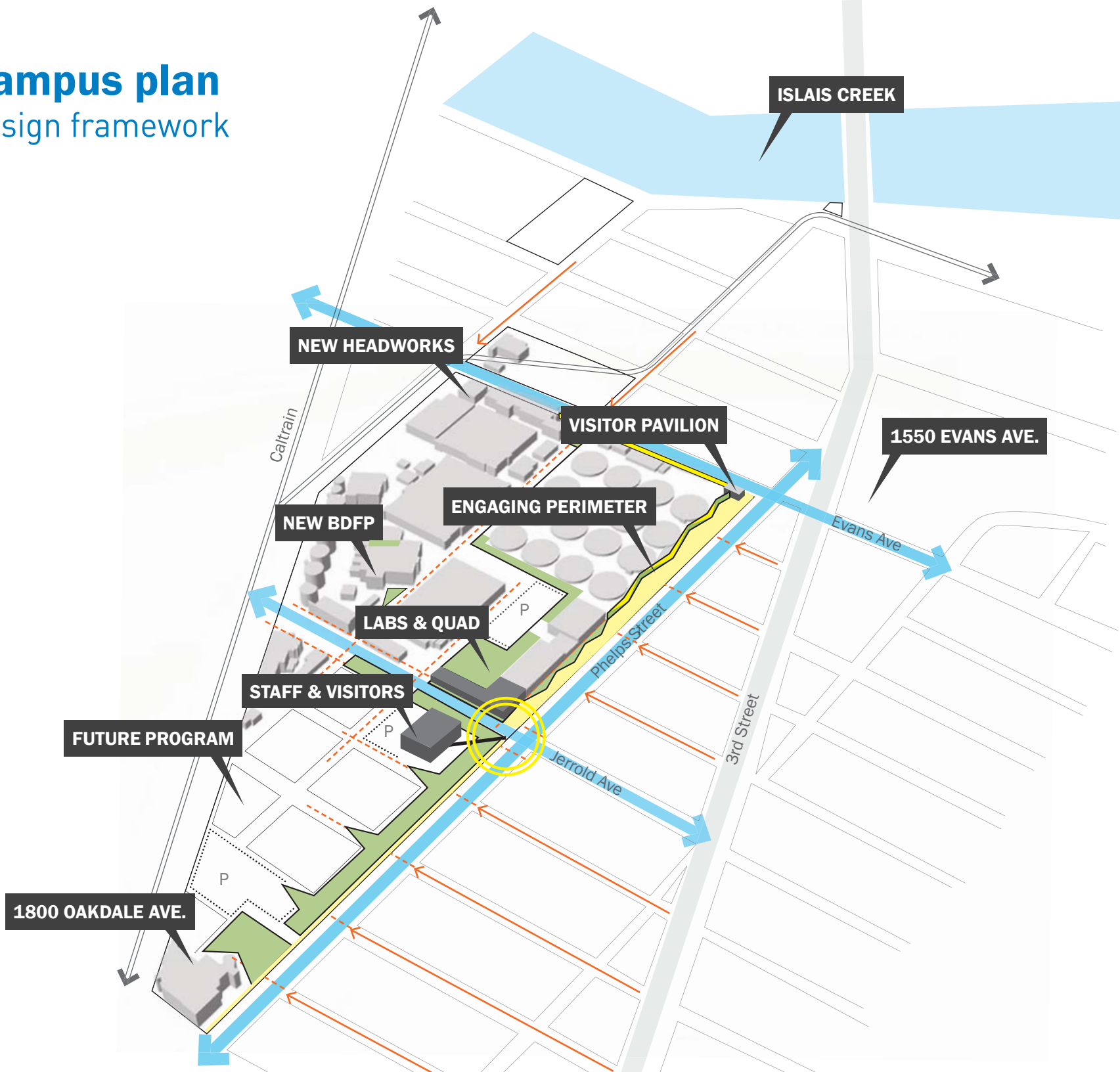
Campus plan

Future phases + phase 1



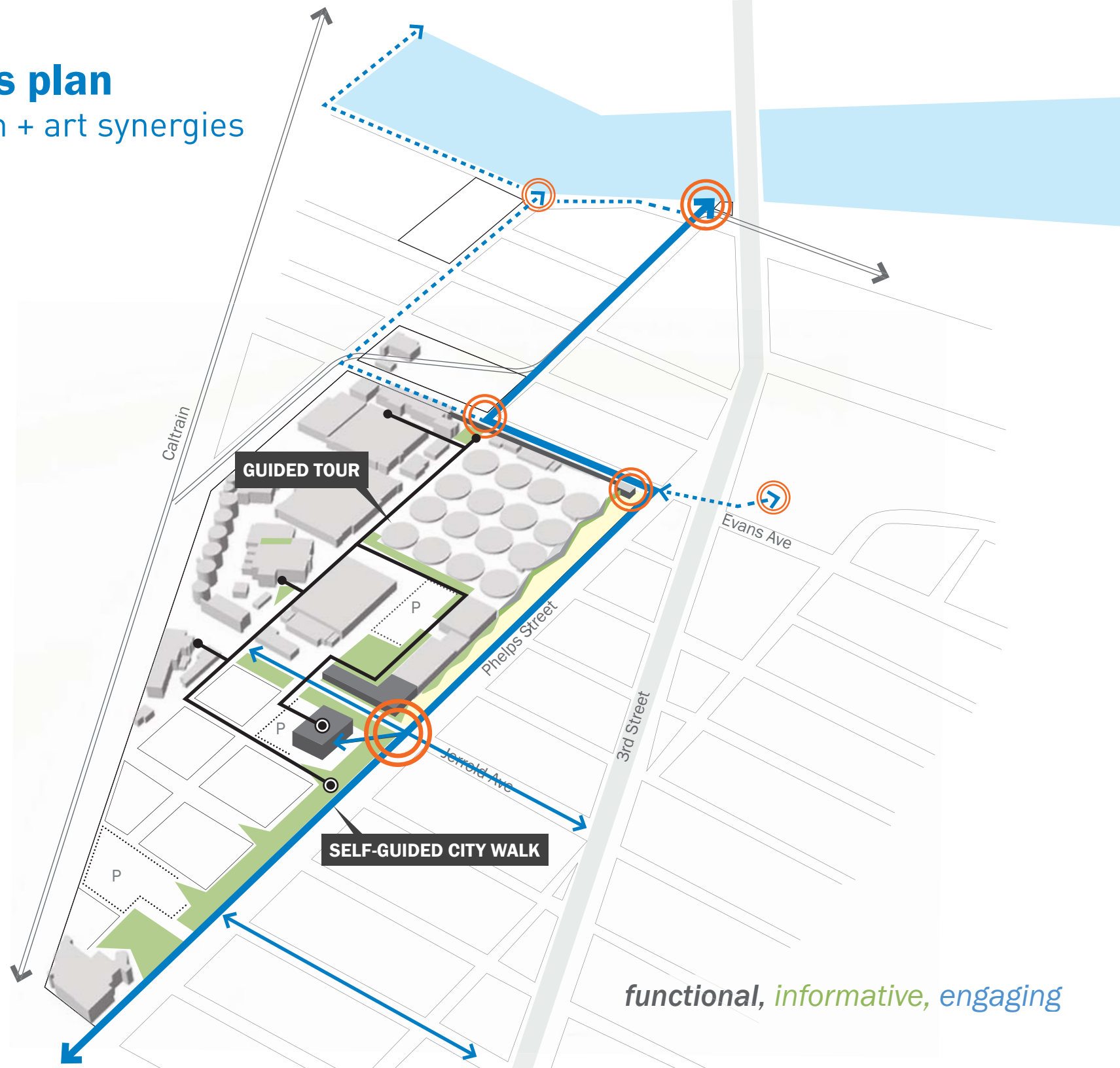
Campus plan

Design framework



Campus plan

Education + art synergies



functional, informative, engaging

Campus plan

Design guidelines (zones)

- A** SEP NORTH + SOUTH CAMPUS
- B** CALTRAIN + I-280
- C** EVANS AVE.
- D** PHELPS ST.
- E** JERROLD AVE.





Campus plan

