

Staff Report

Date: March 10, 2016

To: Visual Arts Commissioners

From: Mary Chou, Project Manager

Re: Noe Valley Town Square Public Art Project - Wowhaus

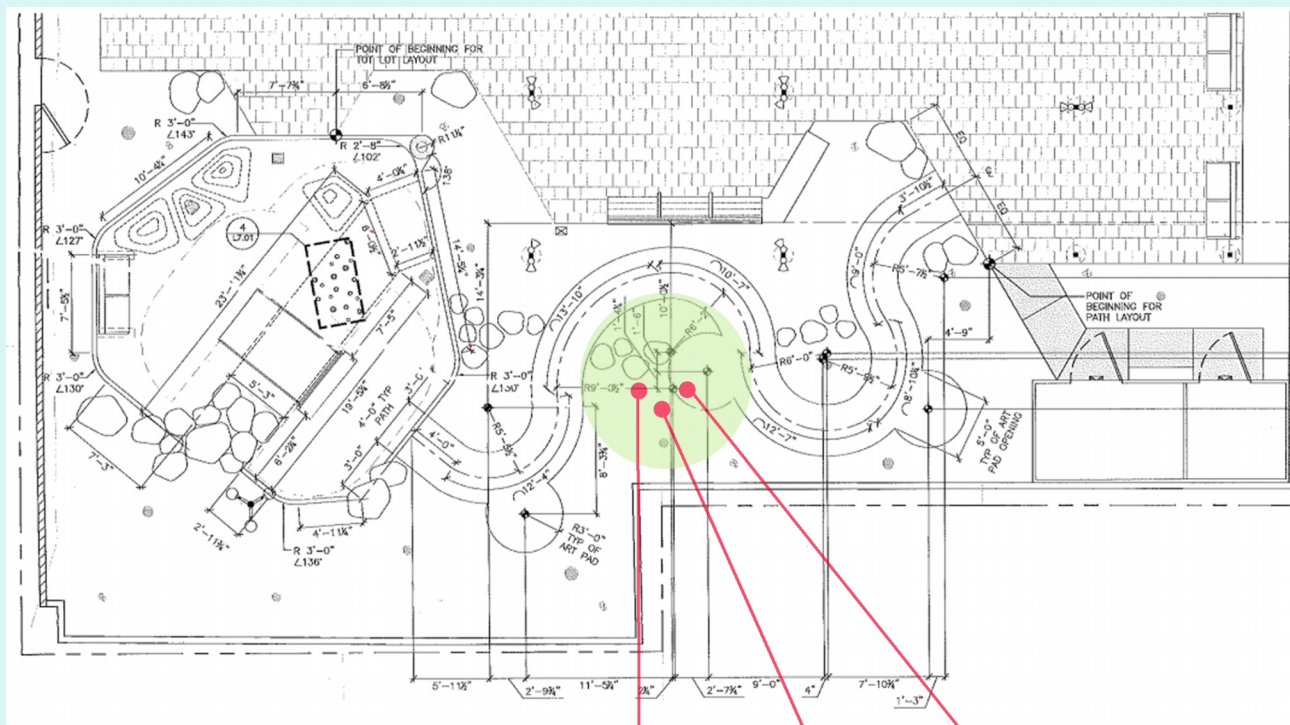
At the November 2015 meeting, the Visual Arts Committee approved the selection of the artist team Wowhaus by the Noe Valley Artist Selection Panel for the creation of an artwork for the Noe Valley Town Square. The artists have developed a proposal for the tot play area. The artwork budget is \$37,100, including design, fabrication and transportation to the site. The project is to be completed and installed by the end of September 2016.

The artists had an orientation meeting with community members Peggy Cling and Alison Jones in January 2016 at the site of the future town square to gather information about the community and the neighborhood during their proposal development. A conceptual proposal was posted online for public comment on February 4. However, based on concerns about the safety and accessibility of the proposal, the artist made revisions. The revised conceptual proposal was posted on the Arts Commission's website for public comment from March 9 – March 16, 2016.

A summary of public comments will be shared with the Visual Arts Committee for consideration prior to approval of the conceptual design.

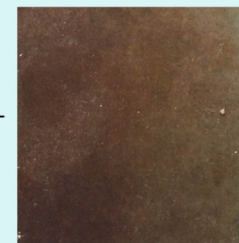
GARDEN GUARDIANS BY WOWHAUS

NOE VALLEY TOWN SQUARE PUBLIC ART CONCEPT

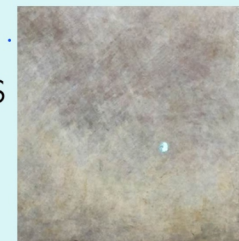


PROPOSED SURFACE COLORS

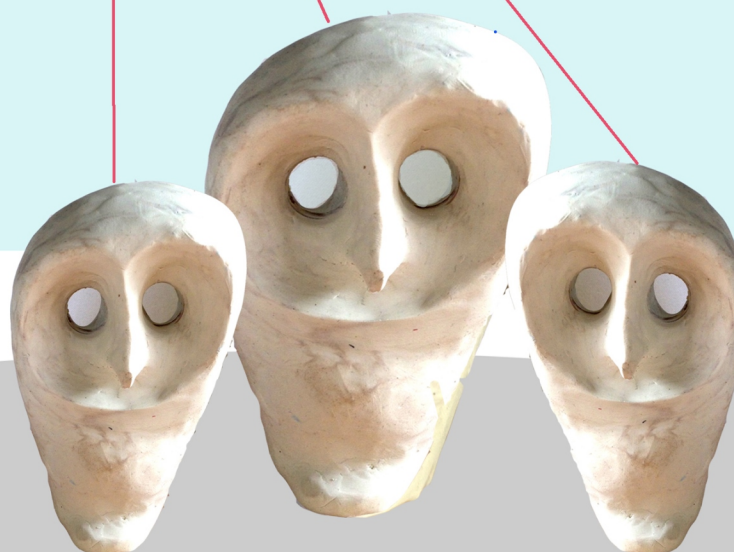
LARGE OWL



SMALL OWLS



ACCENT TEXTURES



CLAY MODELS OF PROPOSED SCULPTURAL FORMS

Final Sculptures in Bronze with Proposed Colors and Textures Above

Small owls: approx. 28" h x 18 w x 12" d; Large owl approx: 36" h x 24" w x 16" d. Eye holes will be no larger than 3.5" d per ADA.

GARDEN GUARDIANS

A Public Art Proposal for Noe Valley Town Square, San Francisco

By the Artist team of Wowhaus

March, 2016

“Garden Guardians” are a trio of engaging bronze sculptures that welcome visitors of all ages to the Noe Valley Town Square. Conceived as sentinels, or guardians of the park, the highly durable sculptures are sited in a circular island on the pathway that winds through the green space toward the back of the Square. An abstract 36” h owl figure is flanked by two smaller 28” h owls.

These sculptures will have a timeless, lovable presence in the community as pure sculpture and are also inviting to children, becoming the locus of imaginative play. Children will construct their own narratives as they play, inviting multiple visits to the park. The owls can be looked through, both framing a view and giving the impression of seeing through the eyes of another creature.

The larger owl, a father or mother, is darker in hue, while the smaller owls have a lighter toned patina. The patina of the sculptures will deepen with use and wear, gaining character over time; the naturalistic color palette of the sculptures complements the environs and will not clash with the two existing murals at the site.

From an environmental standpoint, owls are signs of a healthy ecosystem and warrant our attention. The owl is a symbol of the sky and night; it is also a symbol of wisdom, signaling dispersion of ignorance or darkness, encouraging ‘seeing through the eyes of others.’

The artist team of Wowhaus has created permanent public art throughout the United States for close to 20 years, working in a wide range of durable exterior media. Commissions include “Sunnyside Menagerie”, a series of 23 small bronze sculptures integrated with plantings in San Francisco’s Sunnyside Conservatory, as well as “Abundance”, two large-scale mosaic fish sculptures at the Ortega Branch Public Library.

EXAMPLES OF WOWHAUS BRONZE ART COMMISSIONS

