

Staff Report

Date: May 12, 2016

To: Visual Arts Commissioners

From: Mary Chou, Project Manager

Re: Noe Valley Town Square Public Artwork

The artist team Wowhaus prepared two proposals for the new Noe Valley Town Square in response to feedback from the Visual Arts Committee (VAC) to create sculptures that are more playful and more identifiable as owl forms. The proposals were available for public comment from April 15 to May 11, 2016. SFAC received a total of 15 public comments related to the artwork proposals. Copies of public comment will be provided to Visual Arts Commissioners for their review.

Based on the public comments received, staff recommends that the Commission approve Conceptual Design #1 (revised original).

Motion: Motion to approve Garden Guardians Conceptual Design #1 (revised original), by the artist team Wowhaus for the new Noe Valley Town Square.

OR

Motion: Motion to approve Garden Guardians Conceptual Design #2 (owls with hearts), by the artist team Wowhaus for the new Noe Valley Town Square.

Below is a description of the artist's concept, images of the two proposals, and examples of their past bronze sculptures.

"Garden Guardians" are a duo of engaging bronze sculptures that welcome visitors of all ages to the Noe Valley Town Square. Conceived as sentinels, or guardians of the park, the highly durable sculptures are sited in a circular island on the pathway that winds through the green space toward the back of the Square. An abstract 36" h. owl figure is flanked by a smaller 28" h. owl.

These sculptures will have a timeless, lovable presence in the community as pure sculpture and are also inviting to children, becoming the locus of imaginative play. Children will construct their own narratives as they play, inviting multiple visits to the park. The owls can be looked through, both framing a view and giving the impression of seeing through the eyes of another creature.

The larger owl, a father or mother, is darker in hue, while the smaller owl has a lighter toned patina. The patina of the sculptures will deepen with use and wear, gaining character over time; the naturalistic color palette of the sculptures complements the environs and will not clash with the two existing murals at the site.

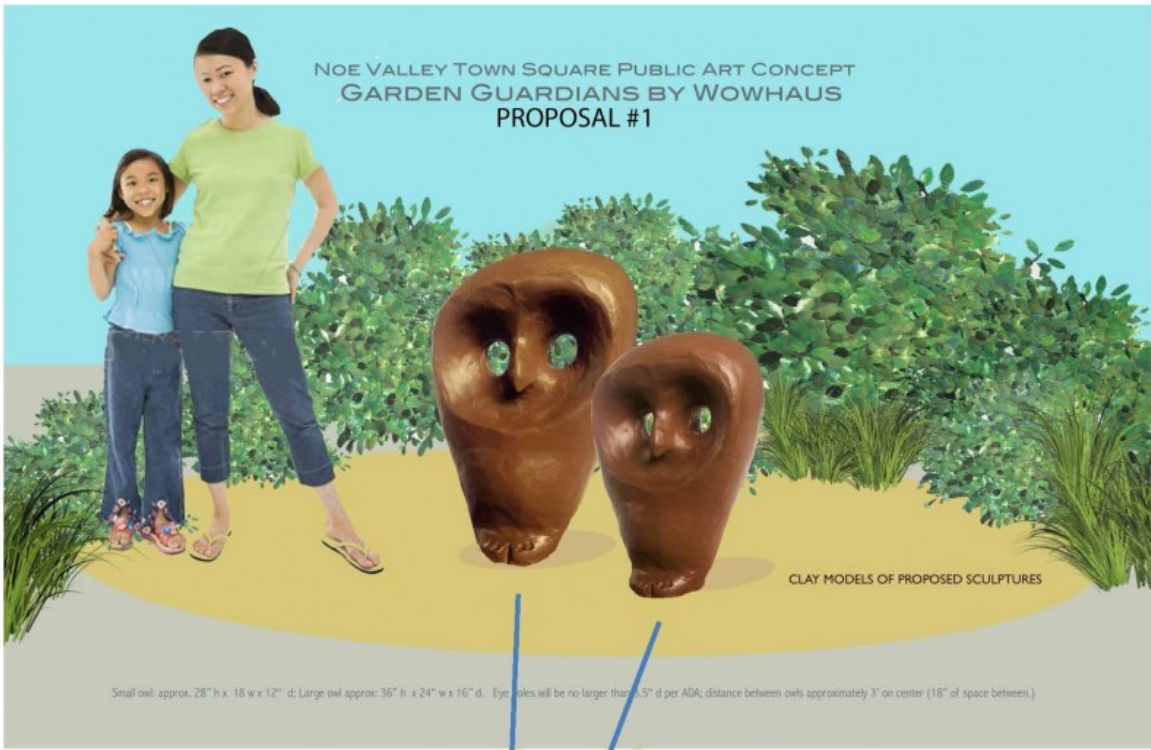
From an environmental standpoint, owls are signs of a healthy ecosystem and warrant our attention. The owl is a symbol of the sky and night; it is also a symbol of wisdom, signaling dispersion of ignorance or darkness, encouraging 'seeing through the eyes of others.'

Wowhaus has created permanent public art throughout the United States for close to 20 years, working in a wide range of durable exterior media. Commissions include "Sunnyside Menagerie", a series of 23 small bronze sculptures integrated with plantings in San Francisco's Sunnyside Conservatory, as well as "Abundance", two large-scale mosaic fish sculptures at the Ortega Branch Public Library.

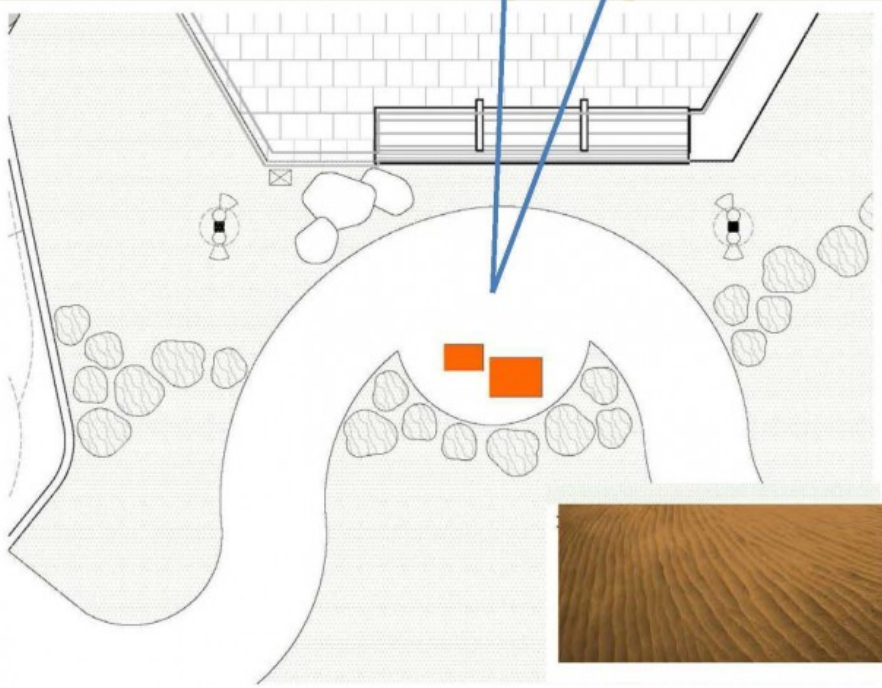
GARDEN GUARDIANS – Proposal #1:

For Proposal #1 of *Garden Guardians*, Wowhaus made modifications to the original proposal so that the sculptures more closely resemble owl forms. Adjustments to the model include changes to the shape of the eyes, a change to the length of the beak, and more definition of the feet. The rendering is provided in a bronze color to closer resemble the completed sculptures. The proposed texture is shown as reference in the sample images below.

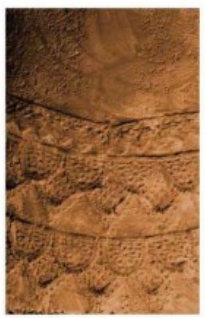
NOE VALLEY TOWN SQUARE PUBLIC ART CONCEPT
GARDEN GUARDIANS BY WOWHAUS
PROPOSAL #1



Small owl approx. 28" h x 18" w x 12" d; Large owl approx. 36" h x 24" w x 16" d. (Eye sizes will be no larger than 3.5" d per ADA; distance between owls approximately 3' on center (18" of space between.)



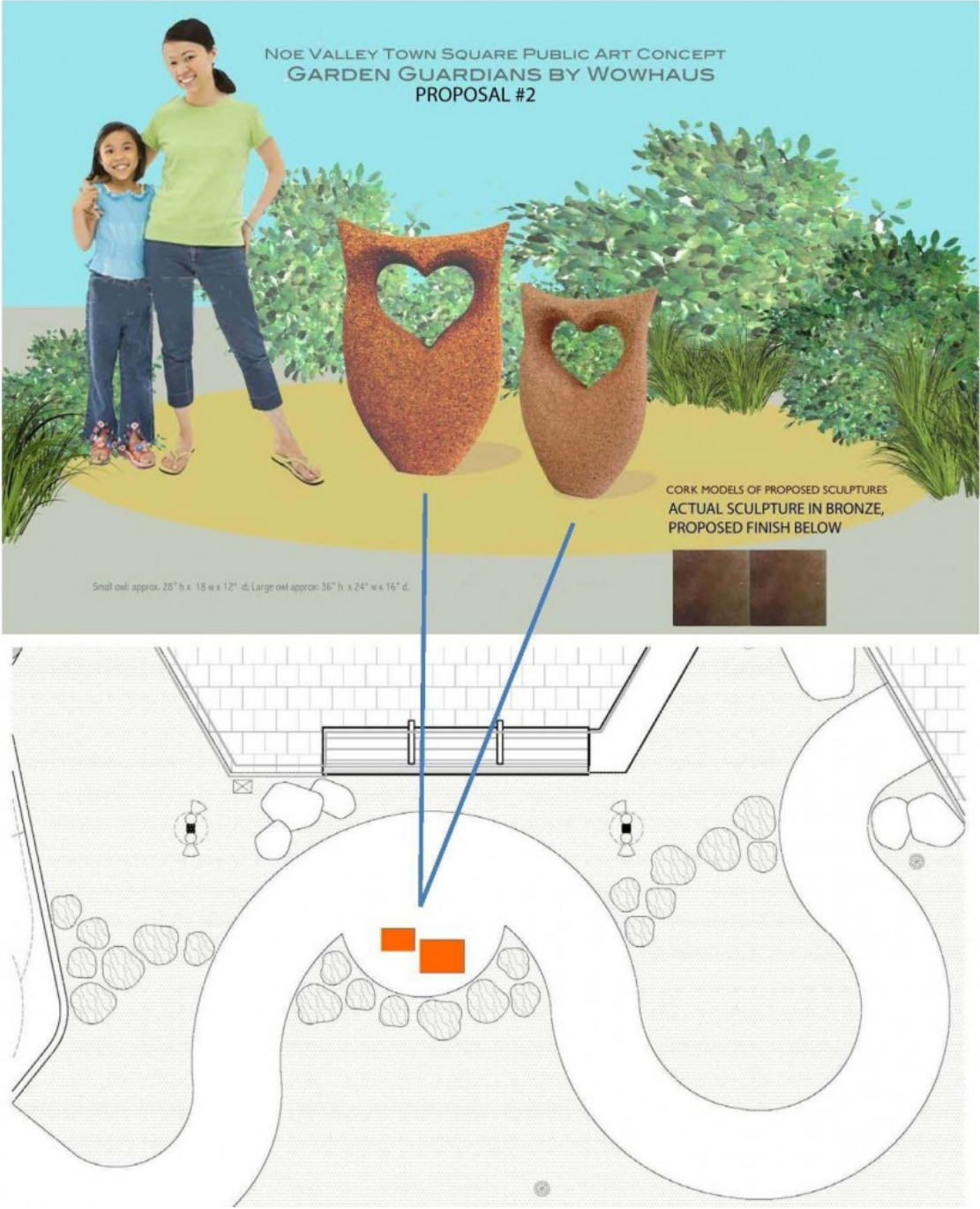
PROPOSED SURFACE COLOR



ACCENT TEXTURES

GARDEN GUARDIANS – Proposal #2:

For Proposal #2 of *Garden Guardians*, Wowhaus created new models of the owls. The owls will be made of bronze and the texture will be simple, smooth and even, to complement the minimal more simplified form of the owls. The proposed texture is shown as reference in the sample image below.



PAST PROJECTS BY WOWHAUS

The images below are bronze sculptures that Wowhaus has completed for other sites. They are shown here to illustrate the finish of the owl sculptures proposed for Noe Valley Town Square.

EXAMPLES OF WOWHAUS BRONZE ART COMMISSIONS

