

TREASURE ISLAND

FERRY SHELTER & BUS SHELTERS | PHASE 3 - CD

Arts Commission Civic Design Review

APRIL 18, 2016

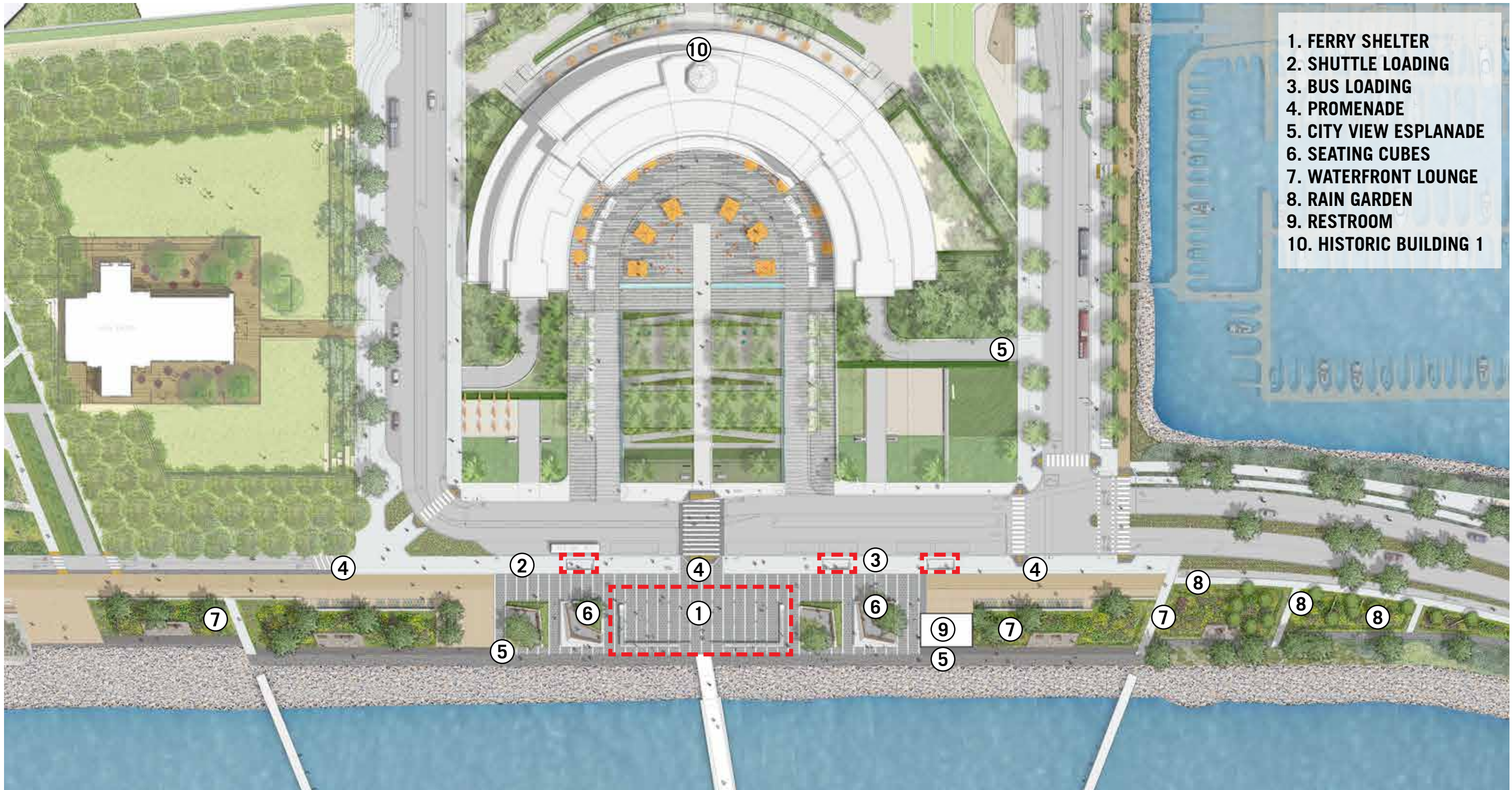


PHASE 2 COMMENTS/INFORMAL SESSION FOLLOW UP

- 1. Lighten up the concrete base of the Ferry Shelter**
 - a. Let the wall be a wall.**
 - b. Seating should be independent or floating off of wall.**
- 2. Develop roof details on Ferry and Bus/Shuttle Shelters to create minimal roof edge profile**
- 3. Make Bus/Shuttle Shelters more unique, distinctive - do not relate them directly to Ferry Shelter**
- 4. Relocate back-flow preventer away from the entrance to the Pier from the Ferry Shelter**

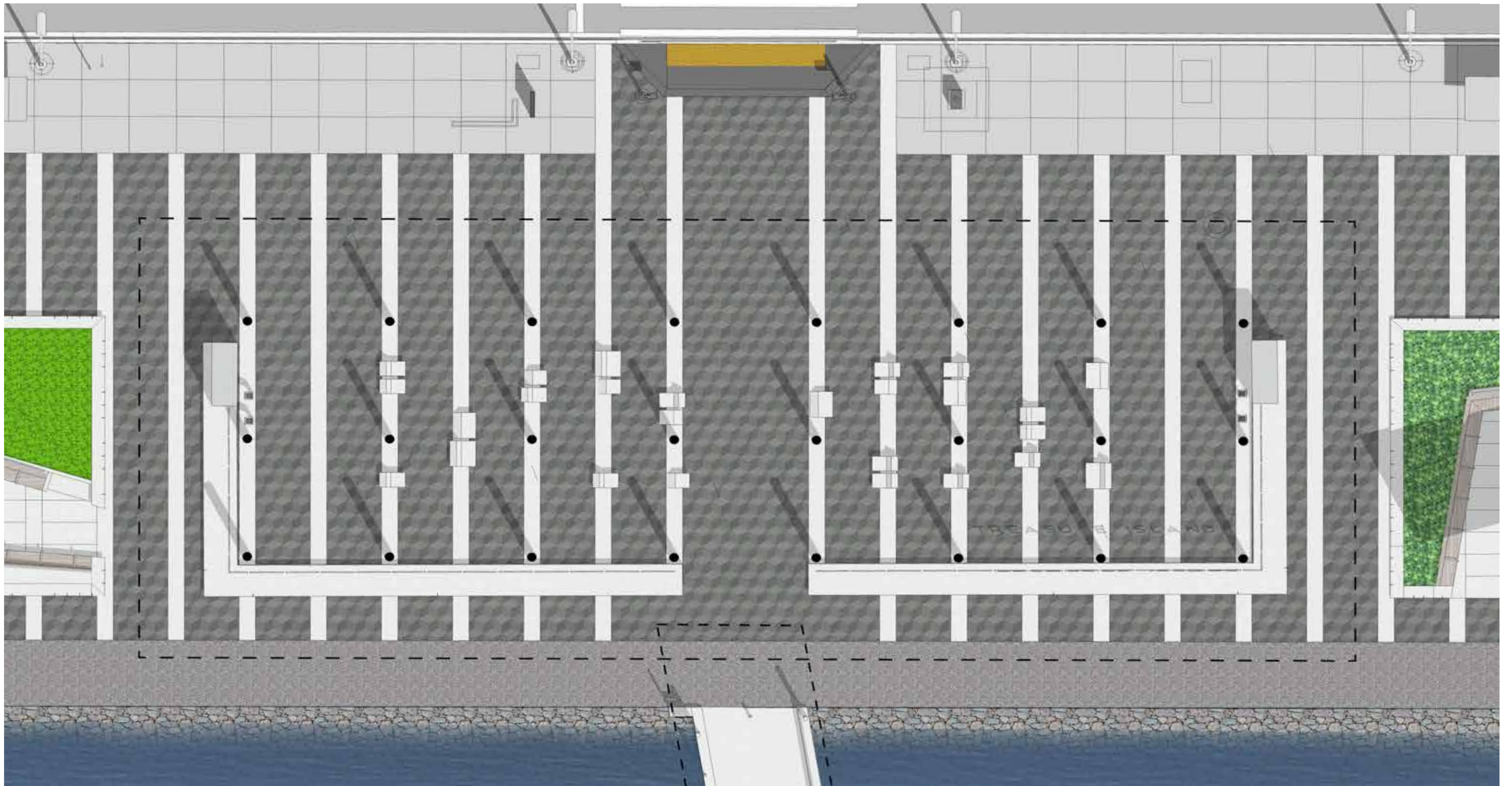


FERRY SHELTER &
BUS SHELTERS

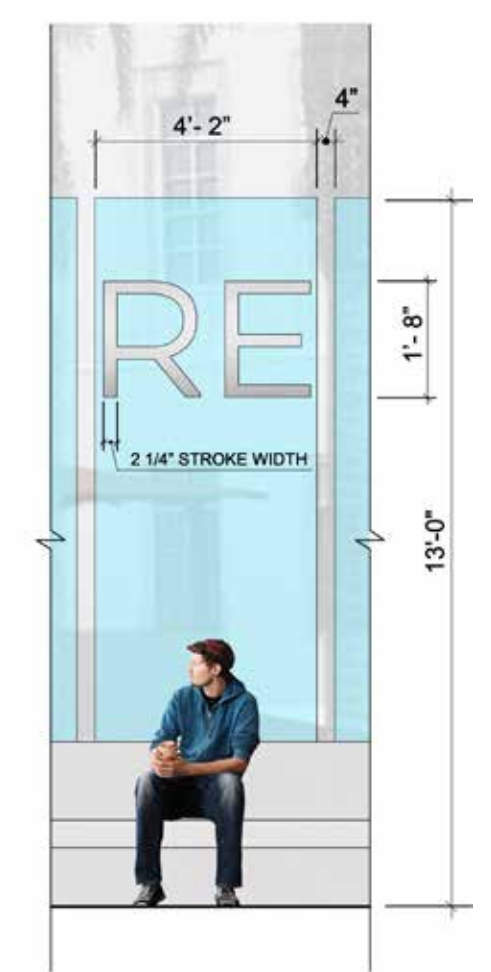
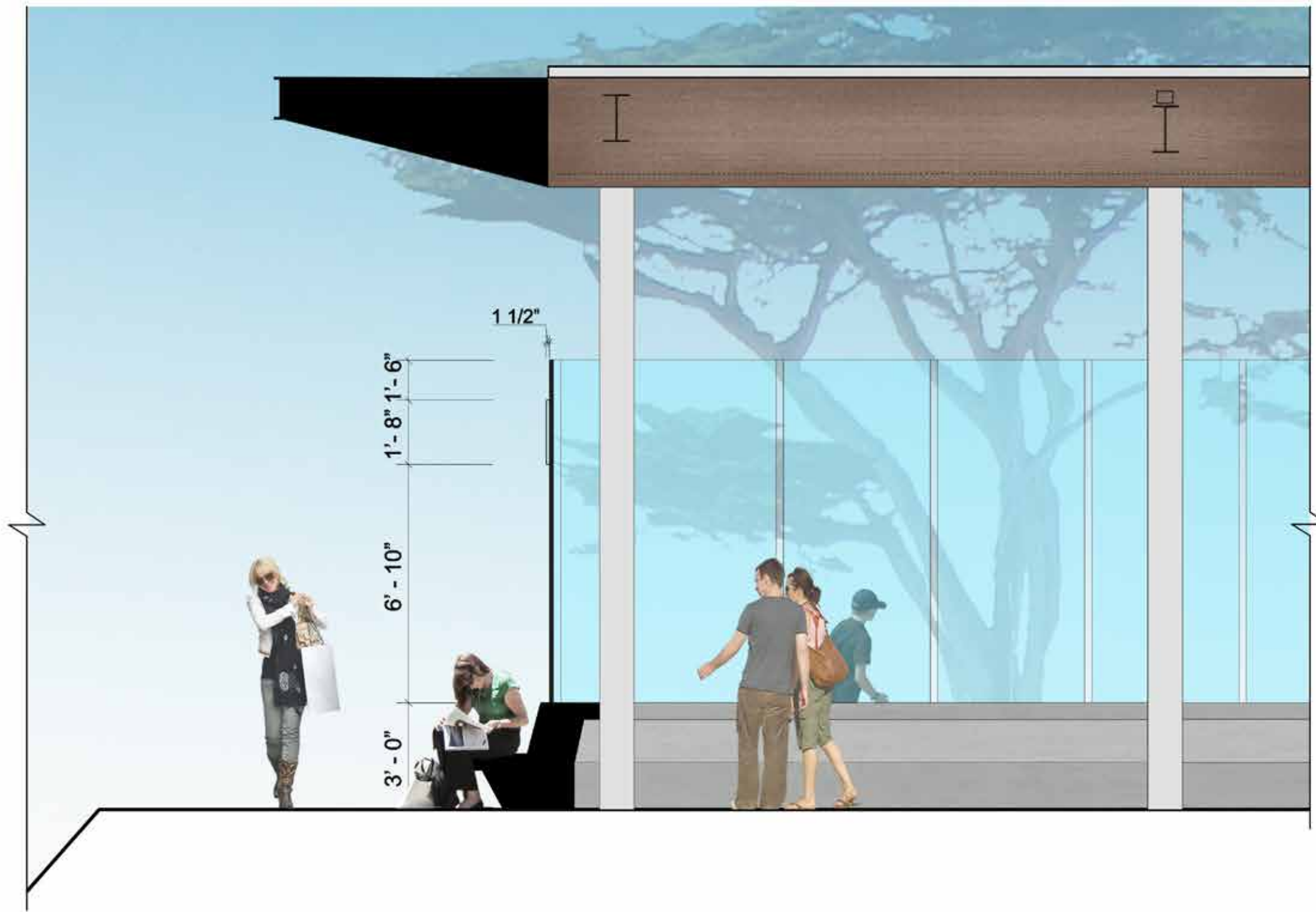


- 1. FERRY SHELTER
- 2. SHUTTLE LOADING
- 3. BUS LOADING
- 4. PROMENADE
- 5. CITY VIEW ESPLANADE
- 6. SEATING CUBES
- 7. WATERFRONT LOUNGE
- 8. RAIN GARDEN
- 9. RESTROOM
- 10. HISTORIC BUILDING 1

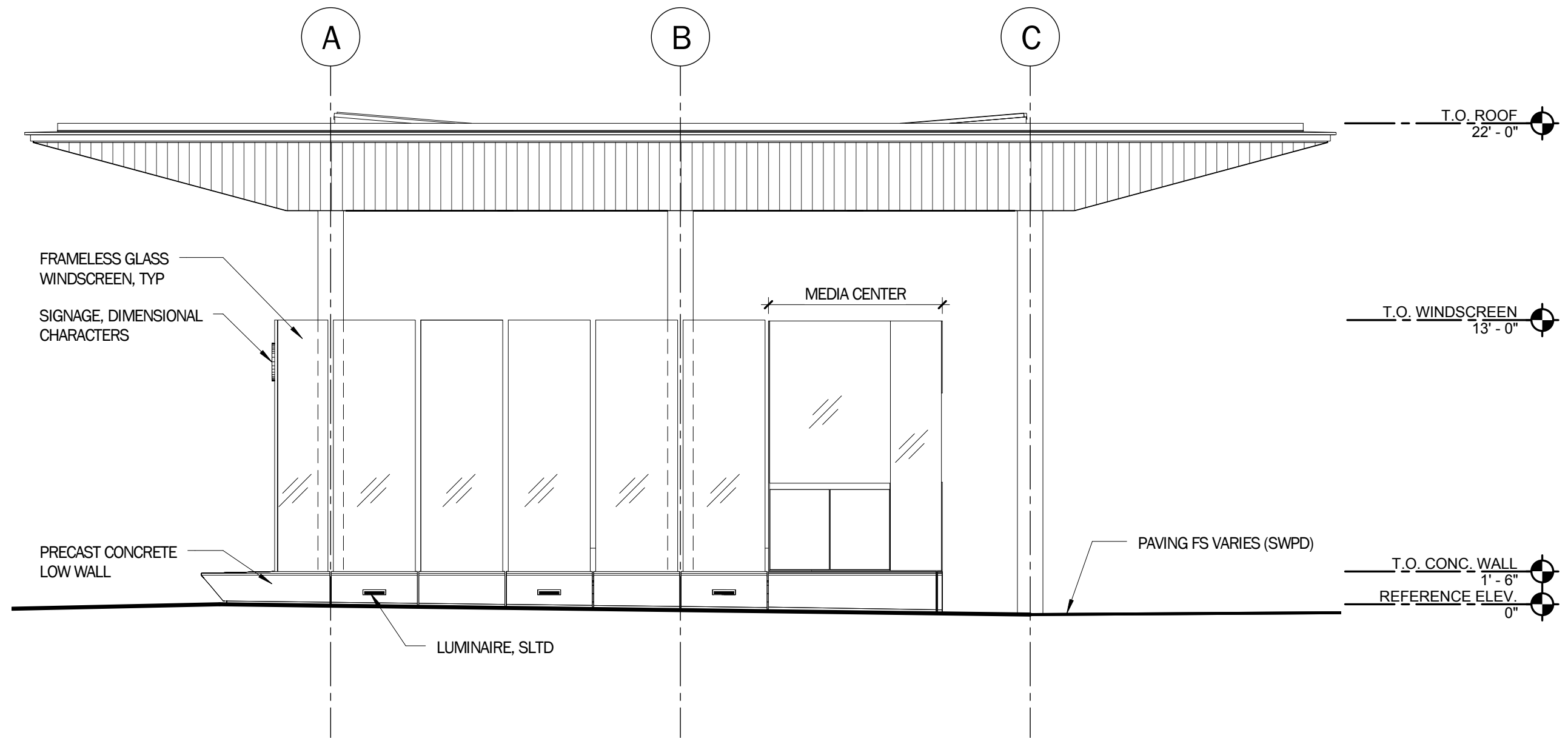


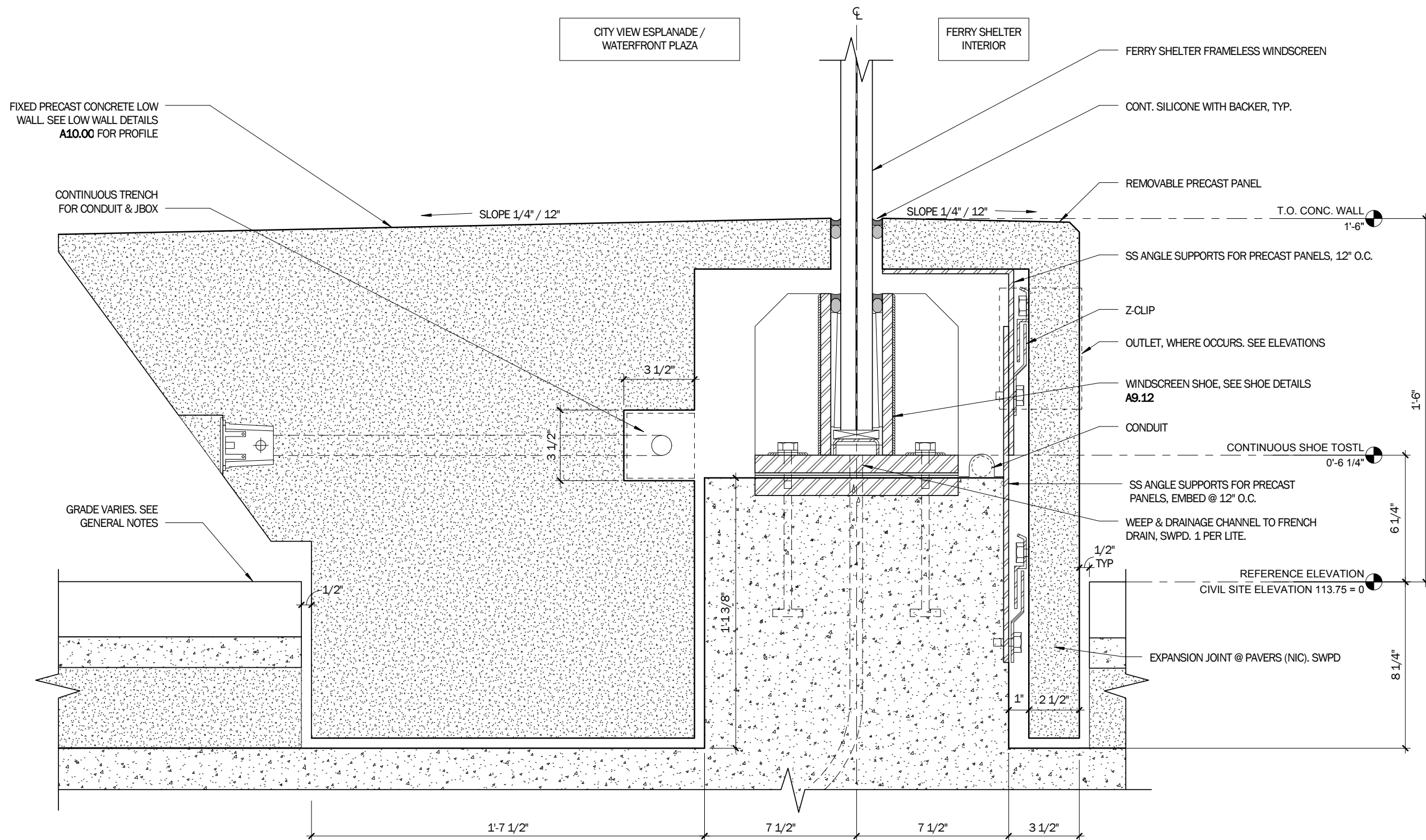






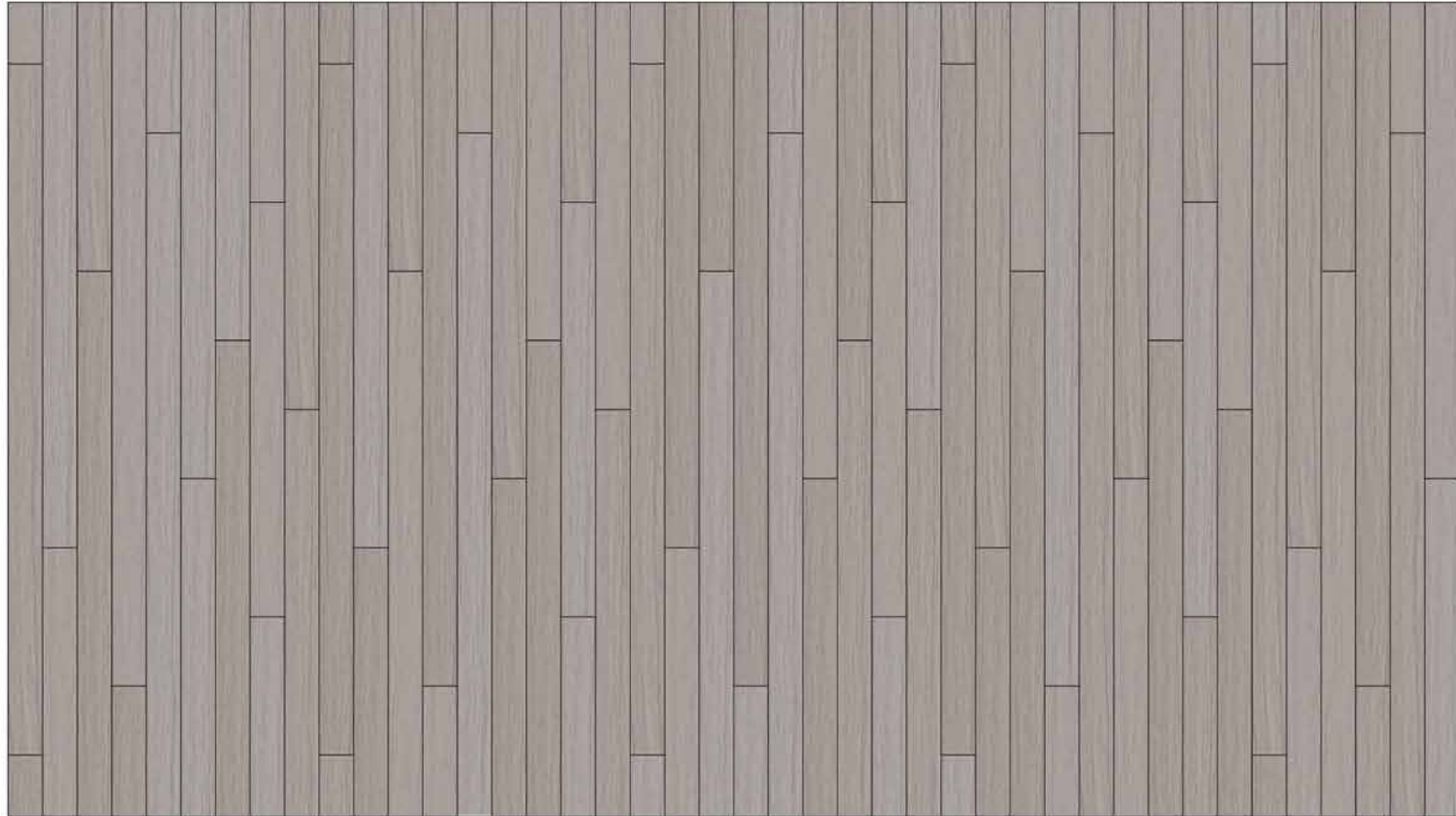




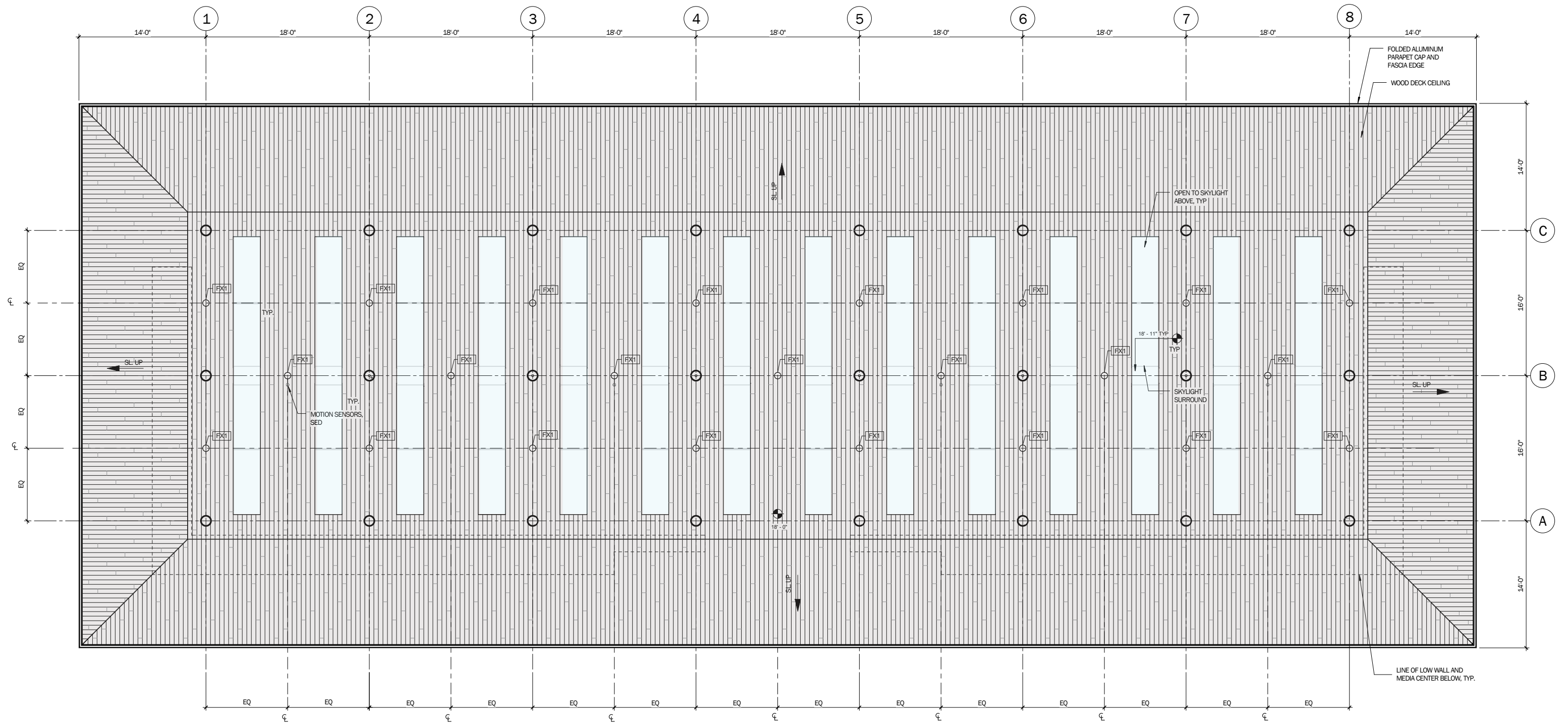


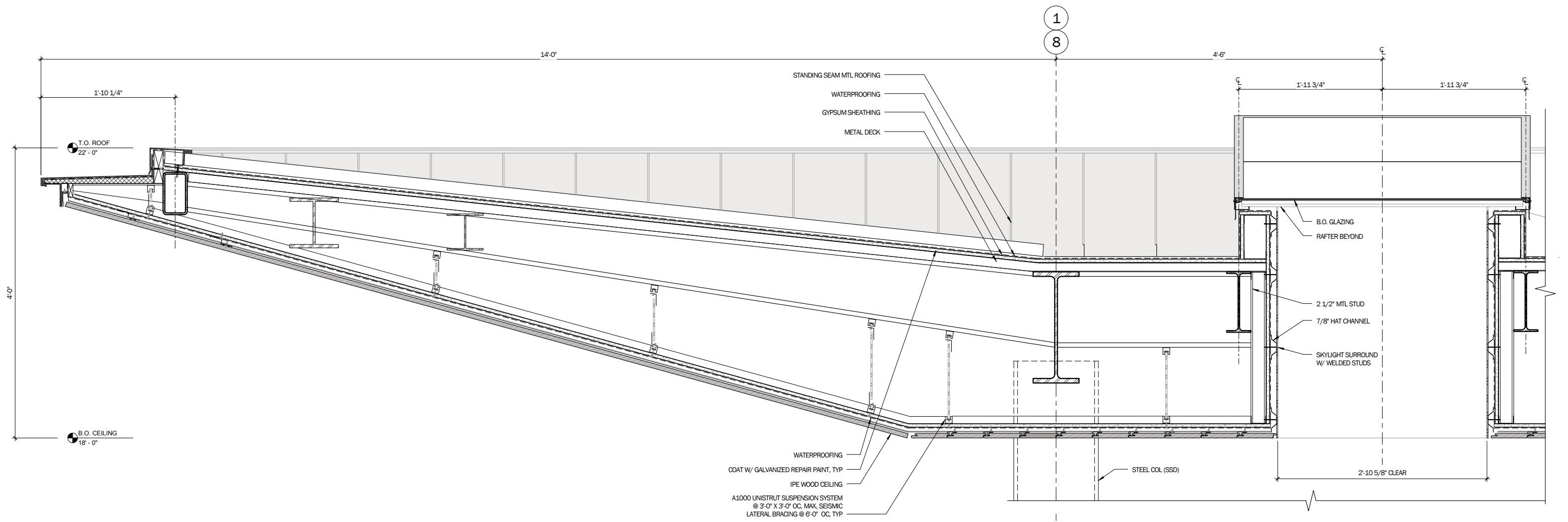


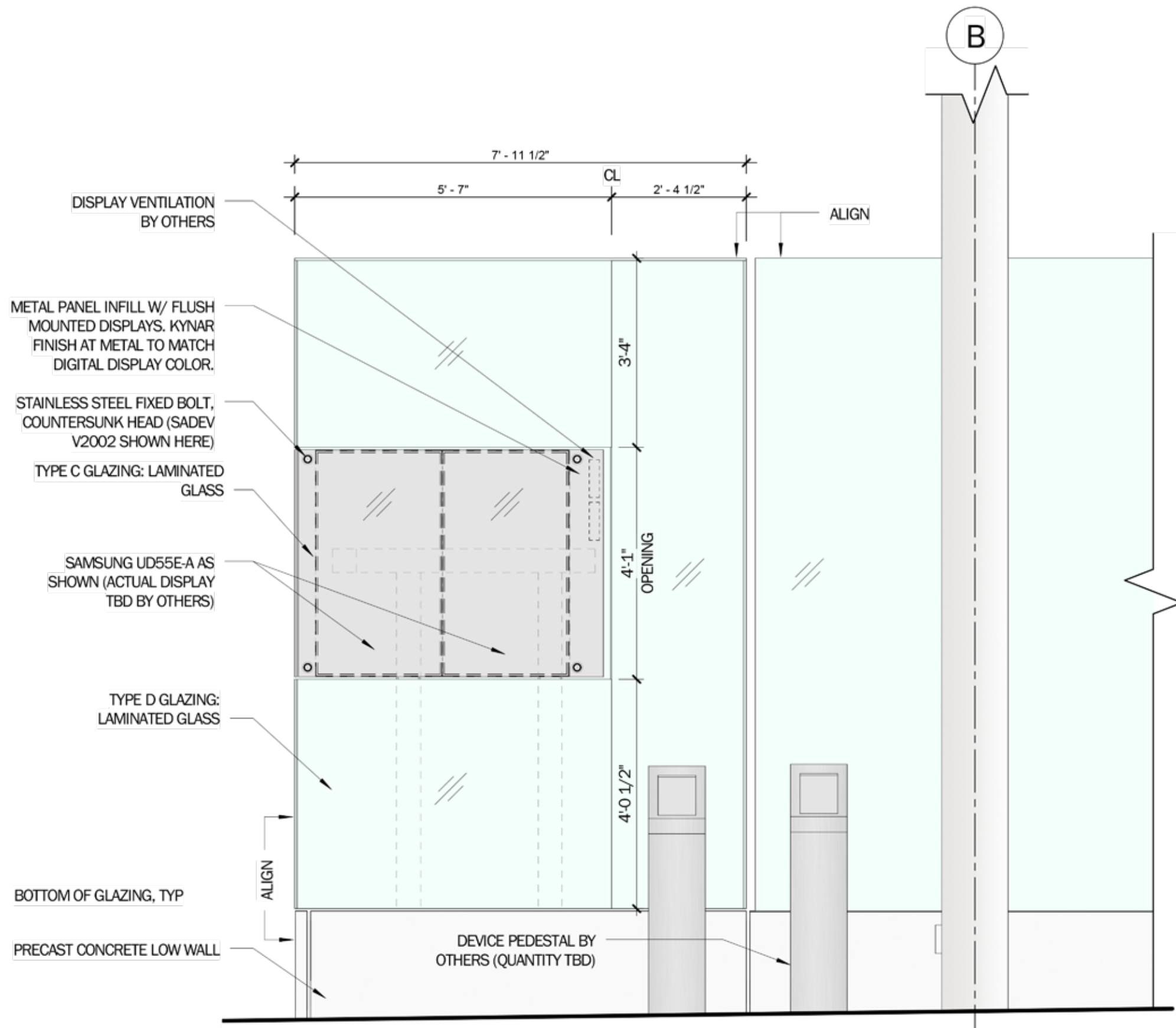


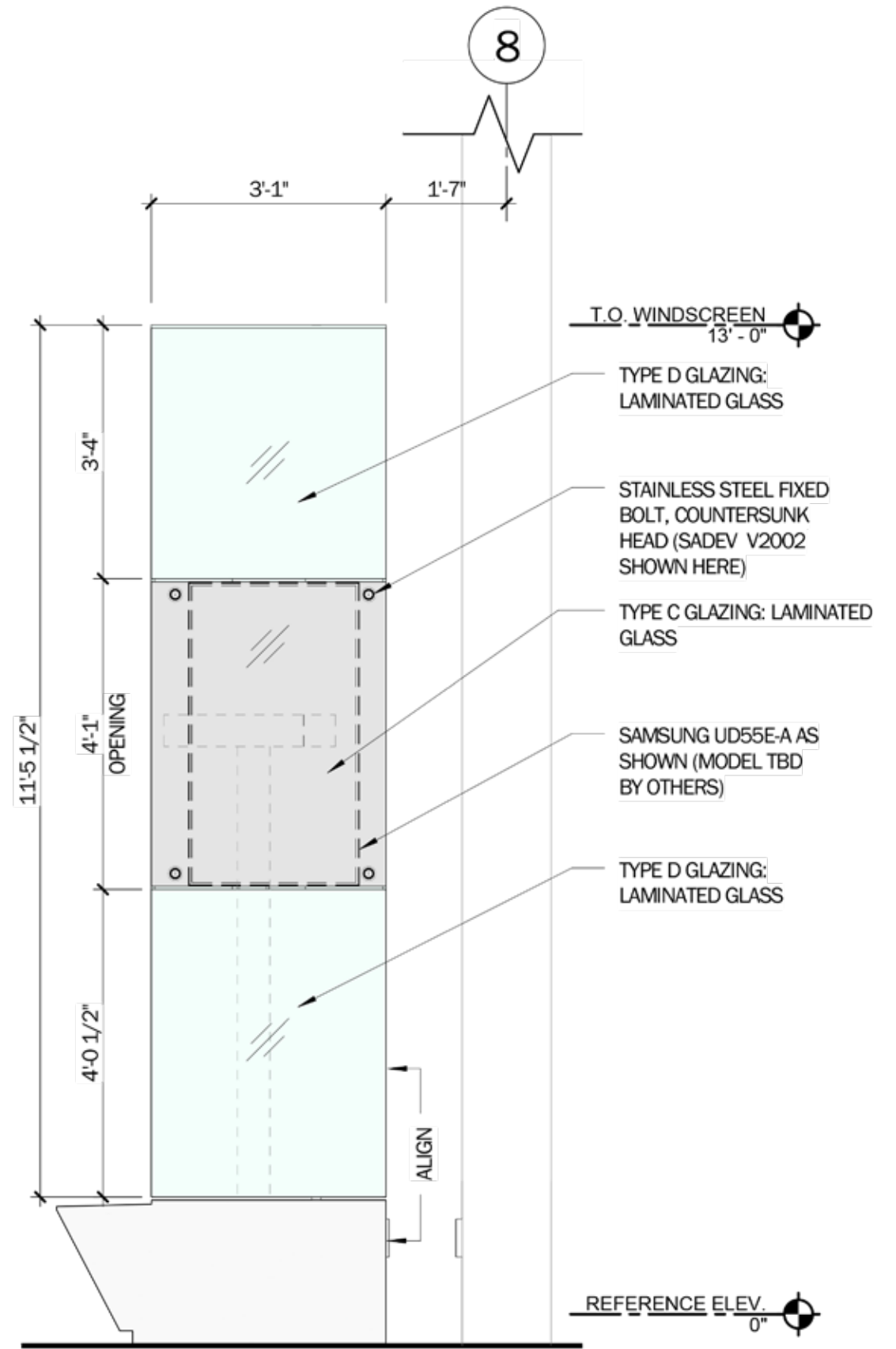
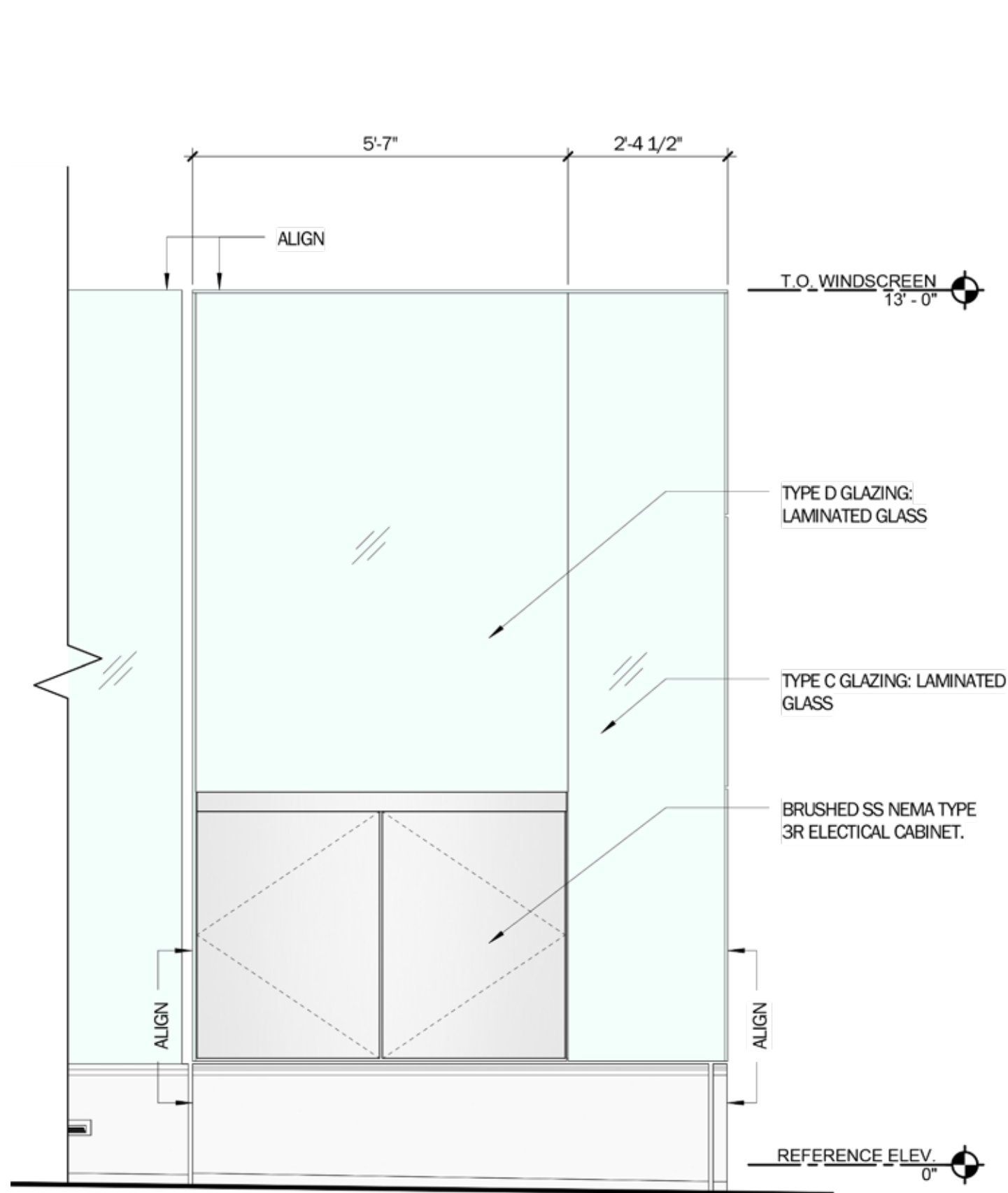


Variegated 10'-0" Planks







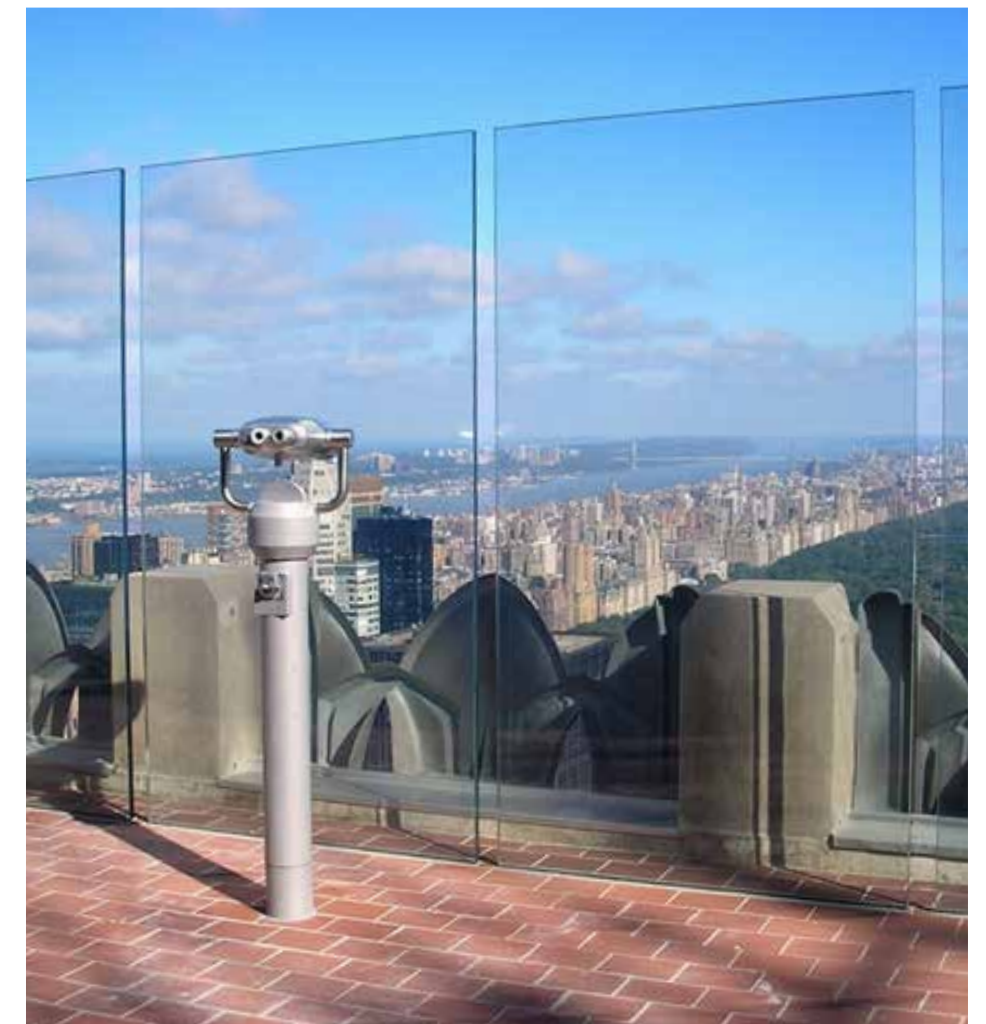




IPE WOOD - PRE-WEATHERED WITH AGING STAIN
(CEILING, BUS/SHUTTLE SHELTERS)



PRECAST CONCRETE
(WINDSCREEN LOW WALL)



LAMINATED GLASS
(FERRY SHELTER WINDSCREEN, MEDIA CENTERS,
BUS/SHUTTLE SHELTERS)



METAL - PEARL MOUSE GREY - RAL 7048
(FASCIA, SKYLIGHT SURROUND, COLUMNS, ROOF,
BUS/SHUTTLE SHELTERS)



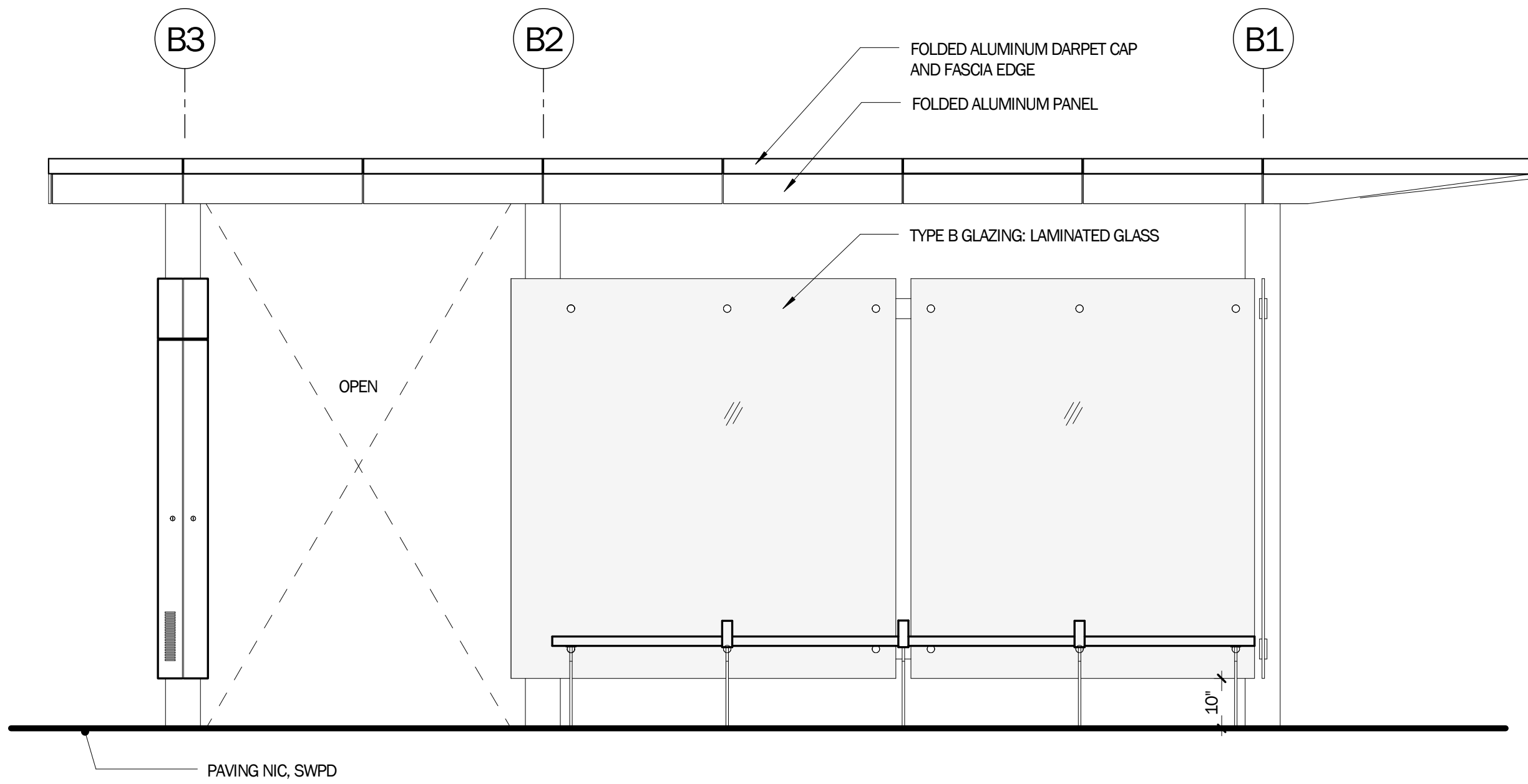
BRUSHED STAINLESS STEEL, GRADE 316
(HARDWARE, MISCELLANEOUS FIXTURES)



CONCRETE PAVERS
(FINISH PAVERS, BY OTHERS)





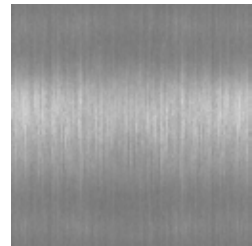




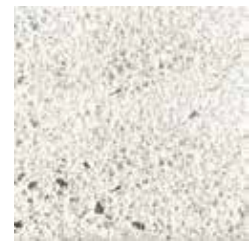
IPE W/ PRE-AGING STAIN



1/8" ALUMINUM PLATE, KYNAR FINISH 7048 (PEARL MOUSE GREY).



BRUSHED STAINLESS STEEL GRADE 316.



CONCRETE (BY OTHERS)

MATERIALS PALETTE

