

TREASURE ISLAND

PUBLIC RESTROOM CONCEPT DESIGN | PHASE 1

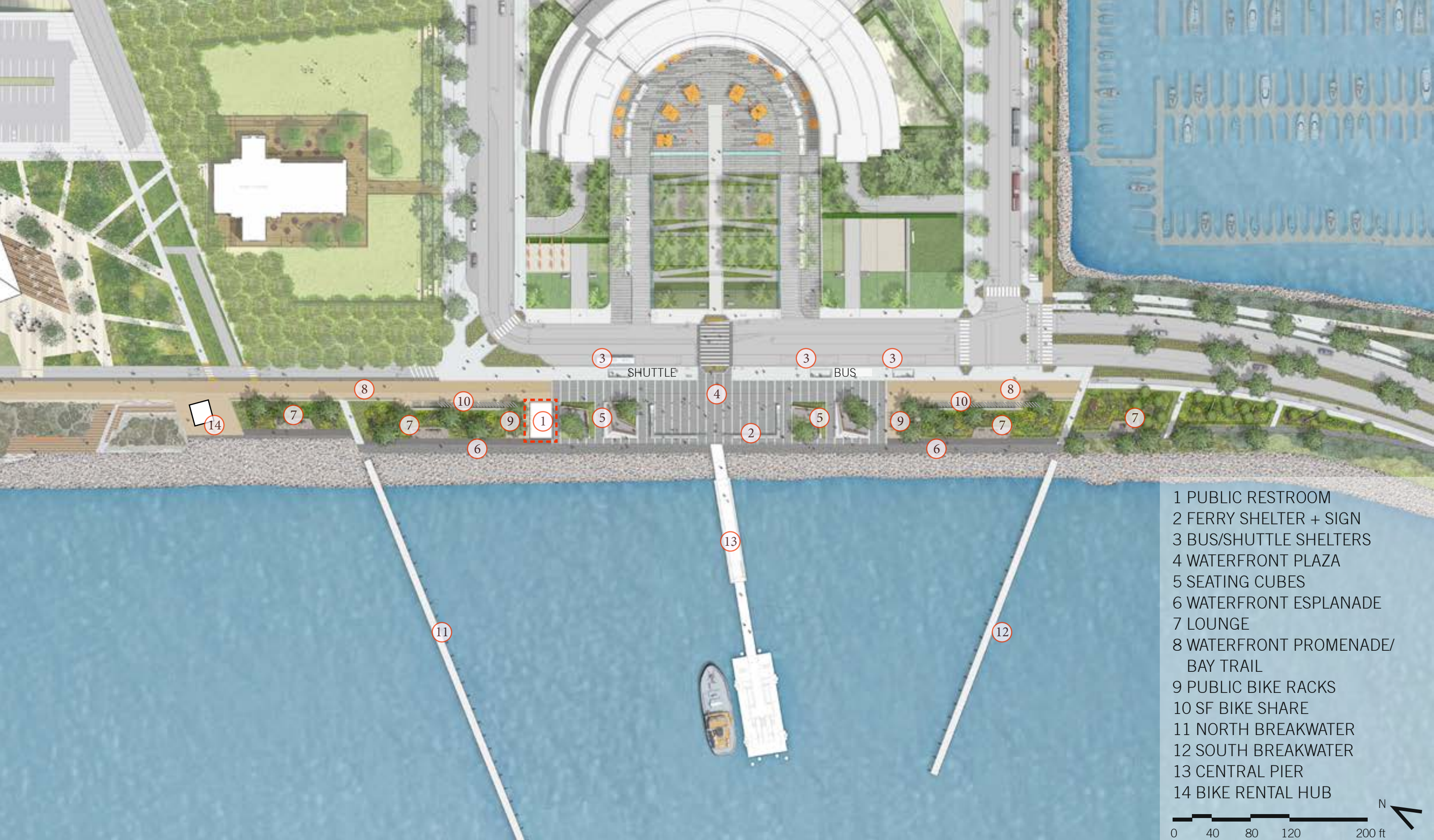
Arts Commission Civic Design Review

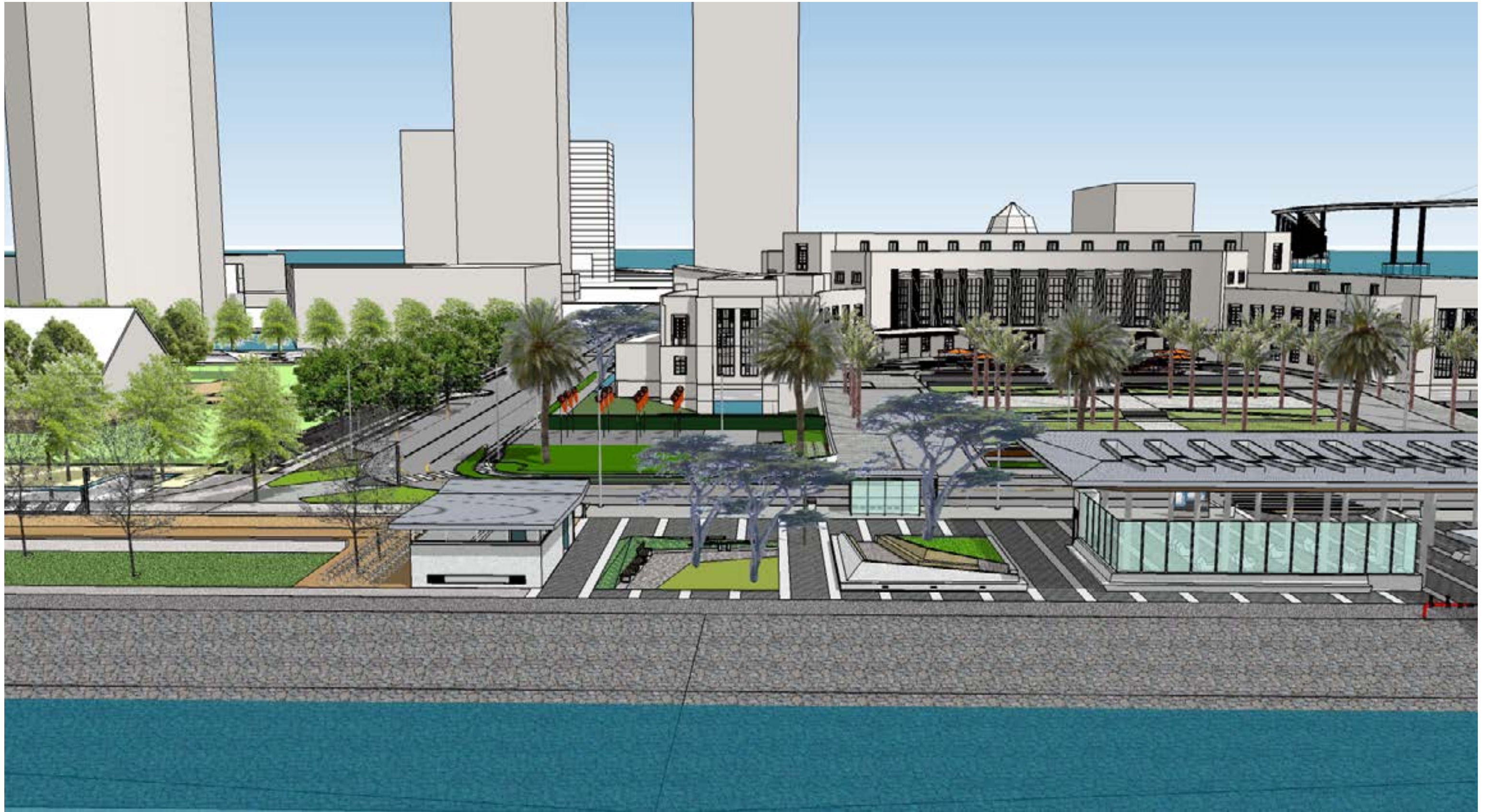
JUNE 20, 2016











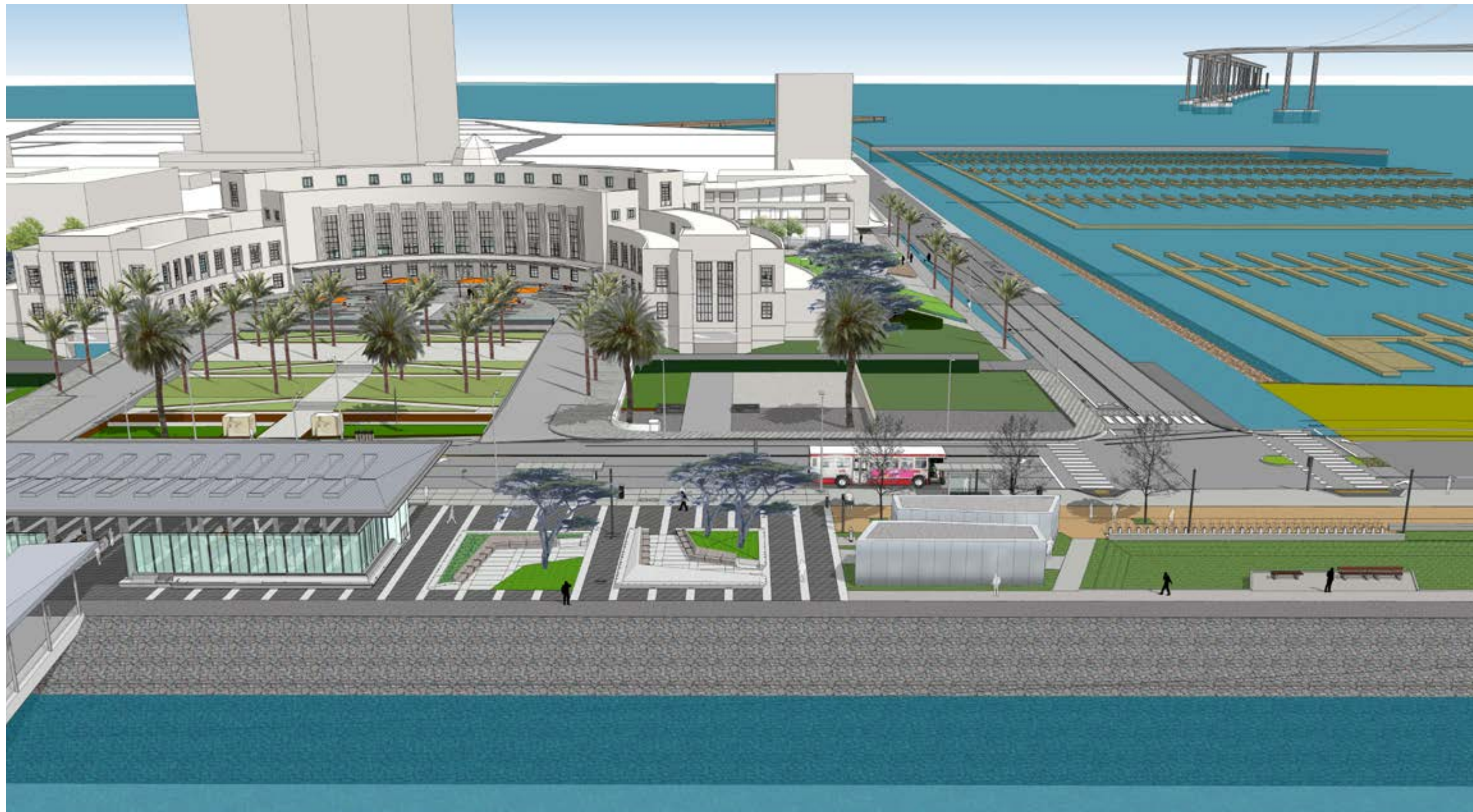






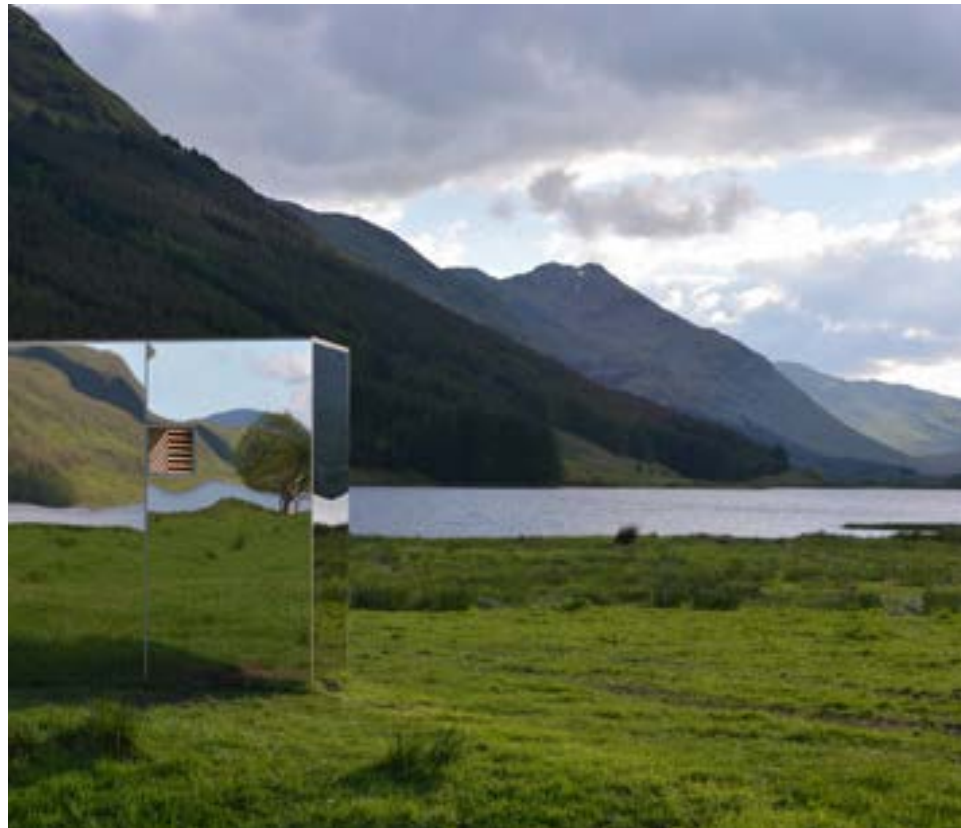








MIMA LIGHT, MIMA ARCHITECTS,
VIANA DO CASTELO, PORTUGAL



THE LOOKOUT, ANGUS RITCHIE & DANIEL TYLER,
LOCH LOMOND & TROSSACHS NATIONAL PARK, SCOTLAND



INVESTCORP BUILDING, ZAHA HADID ARCHITECTS,
OXFORD, UNITED KINGDOM



BALMAIN ARCHIVE, INNOVARCHI, BALMAIN, AUSTRALIA



ONE HUNDRED BOXES, DONALD JUDD, MARFA, TEXAS



LOUVRE LENS, SANAA, LENS, FRANCE



CHANNEL GLASS, NEW RESIDENCE AT THE SWISS EMBASSY, STEVEN HOLL, WASHINGTON D.C.



ALUMINUM PANEL, LOUVRE LENS, SANAA, LENS, FRANCE



REFLECTIVE GLASS, 548 STRADBROOK CONDOMINIUMS, 5468796 ARCHITECTURE, WINNIPEG, MANITOBA, CANADA



CHANNEL GLASS, NEW RESIDENCE AT THE SWISS EMBASSY, STEVEN HOLL, WASHINGTON D.C.



ALUMINUM PANEL, LOUVRE LENS, SANAA, LENS, FRANCE



MIRROR POLISHED STAINLESS STEEL, MIRROR HOUSE, MLRP, FÆLLEDPARKEN, COPENHAGEN

