

City and County of San Francisco



Juvenile Probation Department

Monthly Report for April 2011

Presented to the Juvenile Probation Commission

May 11th, 2011

William P. Siffermann
Chief Probation Officer

Prepared by Jose Luis Perla
Information Technology Director
(415) 753-7686
jose.perla@sfgov.org

Table of Contents

Section I Summary Reports

Juvenile Hall, Log Cabin Ranch Summary Statistics	1
Probation Services Summary and California Youth Authority Statistics	2
Active Cases by Units	3

Section II Current Month General Detail

Probation Referrals, Juvenile Admissions And Average Daily Population	4
Juvenile Hall Admissions and Average Daily Population	5
Commitments to out-of-home placement	6
Commitments to California Youth Authority	7
Log Cabin Ranch Admissions and Average Daily Population	8
Probation Referrals	9
Juvenile Hall And Log Cabin Ranch Incident Report	10
Bay Area Resident Juvenile Hall Comparison	11
Juvenile Hall Admissions	12
Juvenile Hall Detainees by Detention Reason	13
Juvenile Hall Average Daily Population by Rated Capacity	14
Juvenile Hall Average Length of Stay	15

Section III Demographics

Juvenile Hall Detainees by Sex and Race/Ethnic Origin	16
Juvenile Hall Detainees by Age	17
Juvenile Hall Detainees by Age and Sex	18
Juvenile Hall Detainees by Geographic Residence of Youth	19
Juvenile Hall Detainees by Race/Ethnic Origin and Sex	20

Section IV

Historical Information

2008-2010 Probation Referrals	21
2008-2010 Juvenile Hall Admissions	22
2008-2010 Juvenile Hall Average Daily Population	23

Section I

Summary Reports

Summary Report for the Month of April 2011

Juvenile Hall	<i>March 2010</i>	<i>March 2011</i>	<i>April 2010</i>	<i>April 2011</i>	<i>YTD 2010</i>	<i>YTD 2011</i>
Admissions	173	100	105	100	546	398
Average Daily Population	110	81	107	84	101	88
Average Length of Stay (Releases)	19.55	26.78	21.31	16.25	18.92	26.07
Average Length of Stay (In Custody)	48.44	54.63	64.29	60.74	54.84	53.40
Releases	166	117	127	92	524	399
Log Cabin Ranch						
Admissions:						
First Time Commitments	4	2	2	0	8	4
Recommitments	0	0	0	0	0	0
<i>Total</i>	4	2	2	0	8	4
Releases:						
Graduated	2	1	1	3	6	7
Escape	2	0	0	0	2	0
Other releases	0	0	1	0	1	0
<i>Total</i>	4	1	2	3	9	7
Average Daily Population	13	22	12	22	12	22

Summary Report for the Month of April 2011

Probation Services	<i>March 2011</i>	<i>April 2011</i>	<i>Year To Date 2011</i>
Probation Referrals	196	164	702
Total Petitions including violation of probation	93	89	439
Selected Court Dispositions:			
California Youth Authority	0	0	0
Log Cabin Ranch	2	1	5
Out of Home Placement	18	11	58
Ward Probation	37	37	125
Non-Ward Probation (725a WI)	3	2	15
Informal Probation (654 WI)	7	12	48
Violation of Probation Petitions Filed	9	16	50
California Youth Authority Monthly Count San Francisco County Juvenile Court Cases April 30 th , 2011			
Category	Institutions	Parole	
Males			
White	0	1	
Hispanic	0	1	
African American	6	4	
Asian	0	0	
Native American	0	0	
Filipino	0	0	
Pacific Islander	1	0	
Other	0	0	
Total	7	6	
Females			
White	0	0	
Hispanic	0	1	
African American	0	1	
Asian	0	0	
Native American	0	0	
Filipino	0	0	
Pacific Islander	0	0	
Other	0	0	
Total	0	2	
Grand Total	7	8	

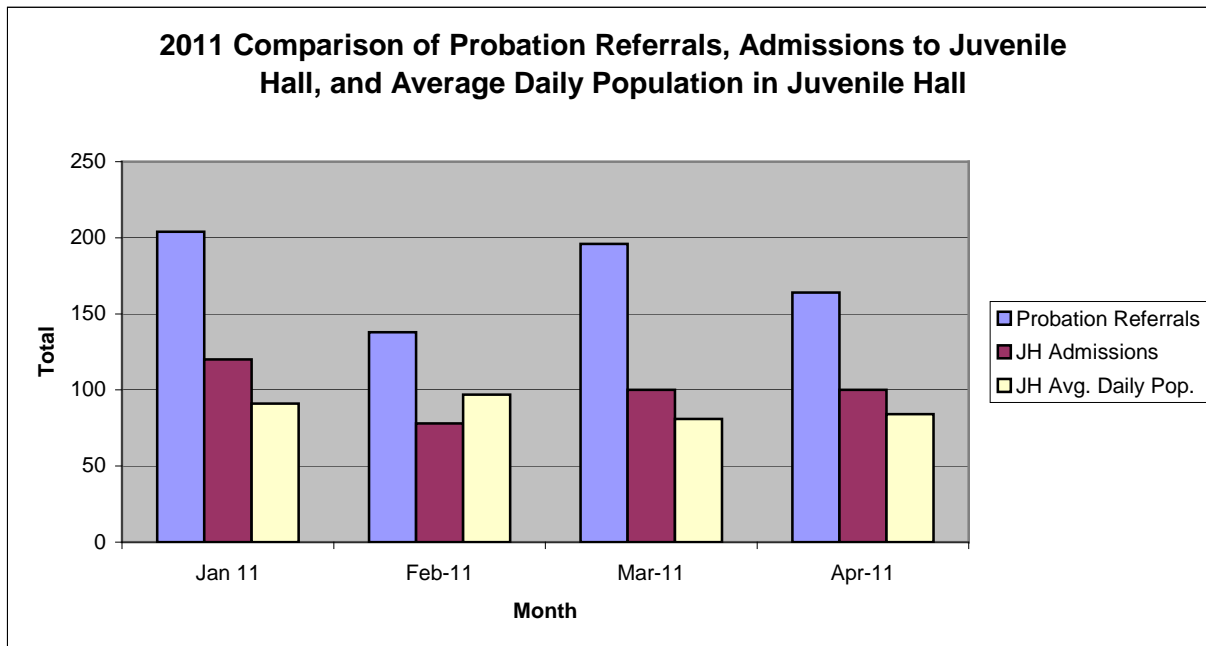
Summary Report for the Month of April 2011

Probation Services			
Active Cases by Units	March 2011	April 2011	April Average # Youth by PO
CARC	187	190	190
Intake Green (Custody Screening Investigation)	111	99	12
Intake Gold (Probation Services 1)	159	174	24
Probation Services 2	208	218	21
Probation Services 3	216	208	20
Probation Services 4	194	194	24
Special Services	9	6	1
<i>Total</i>	1,084	1,089	42
Total Active Intake Cases	466	468	
Total Probation/Supervision Cases	618	621	

Section II
Current Month
General Detail

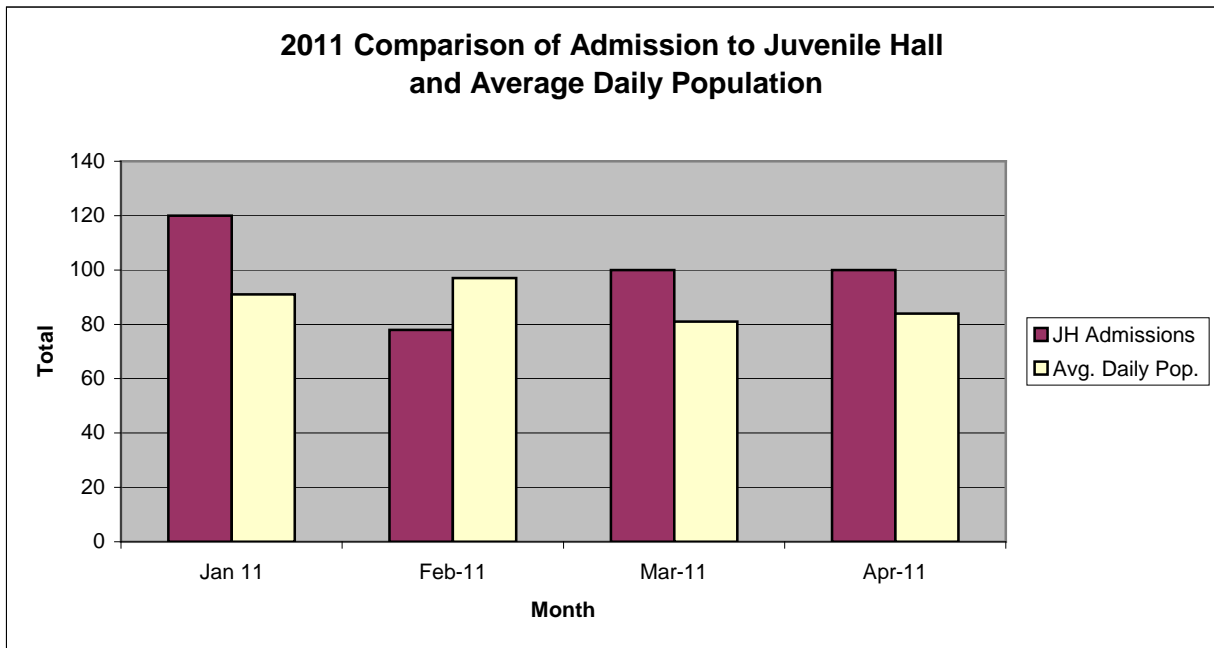
San Francisco Juvenile Probation Department

	Jan 11	Feb-11	Mar-11	Apr-11	May-11	Jun-11	Jul-11	Aug-11	Sep-11	Oct-11	Nov-11	Dec-11
Probation Referrals	204	138	196	164								
JH Admissions	120	78	100	100								
JH Avg. Daily Pop.	91	97	81	84								



San Francisco Juvenile Probation Department

	Jan 11	Feb-11	Mar-11	Apr-11	May-11	Jun-11	Jul-11	Aug-11	Sep-11	Oct-11	Nov-11	Dec-11
JH Admissions	120	78	100	100								
Avg. Daily Pop.	91	97	81	84								

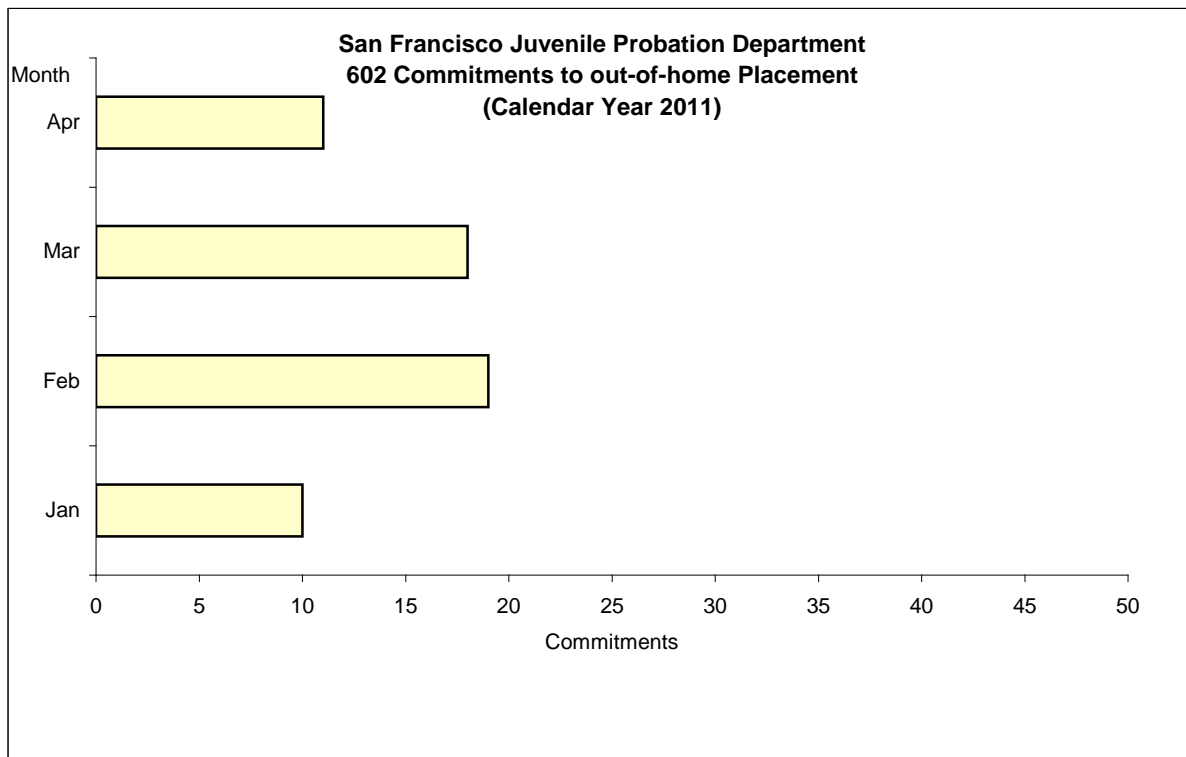


Out-of-Home Placement¹

Commitments of 602's

Calendar Year 2011

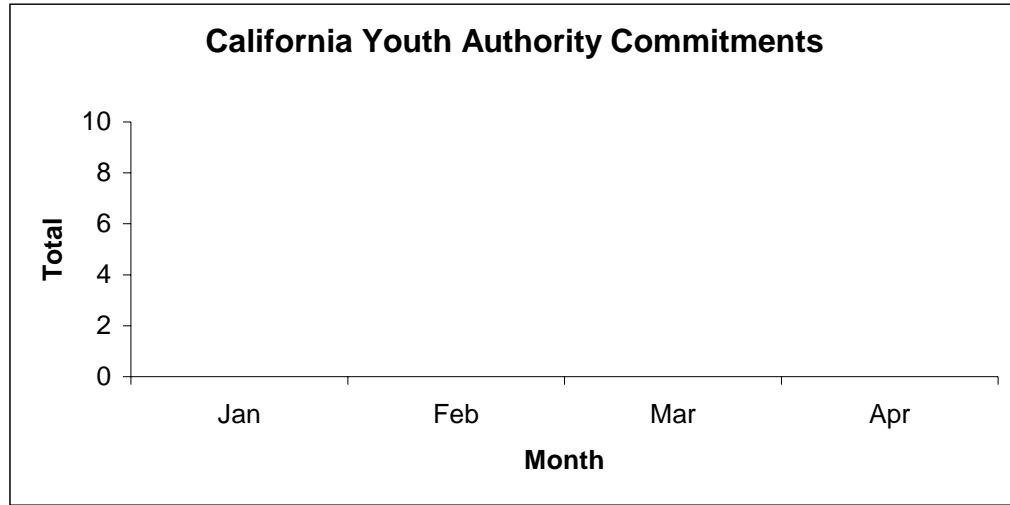
Commitments	Jan	Feb	Mar	Apr	May	Jun	Jul	Aug	Sep	Oct	Nov	Dec	Total
2011	10	19	18	11									58



¹ This report is based on 602 Commitments to out-of-home placements. If there is a 601 commitment, it will show as a footnote here. Figures are regularly updated to include reports from previous reporting periods.

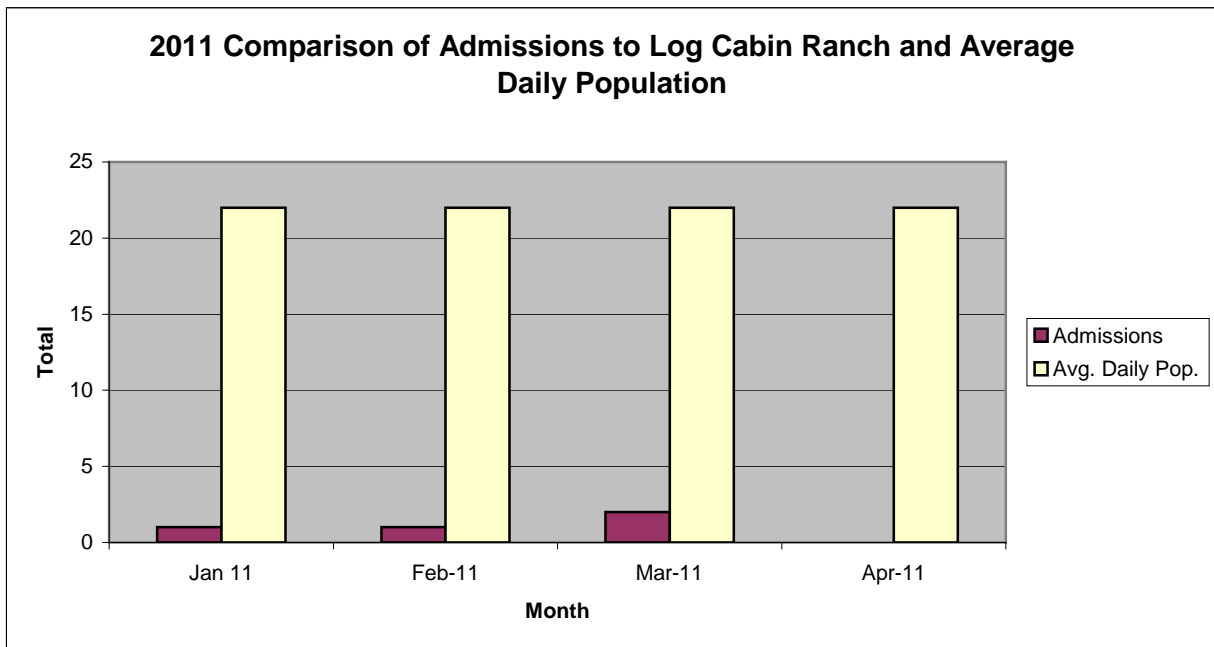
California Youth Authority Commitments (Calendar Year 2011)

Commitments	Jan	Feb	Mar	Apr	May	Jun	Jul	Aug	Sep	Oct	Nov	Dec	Total
2011	0	0	0	0									0



San Francisco Juvenile Probation Department

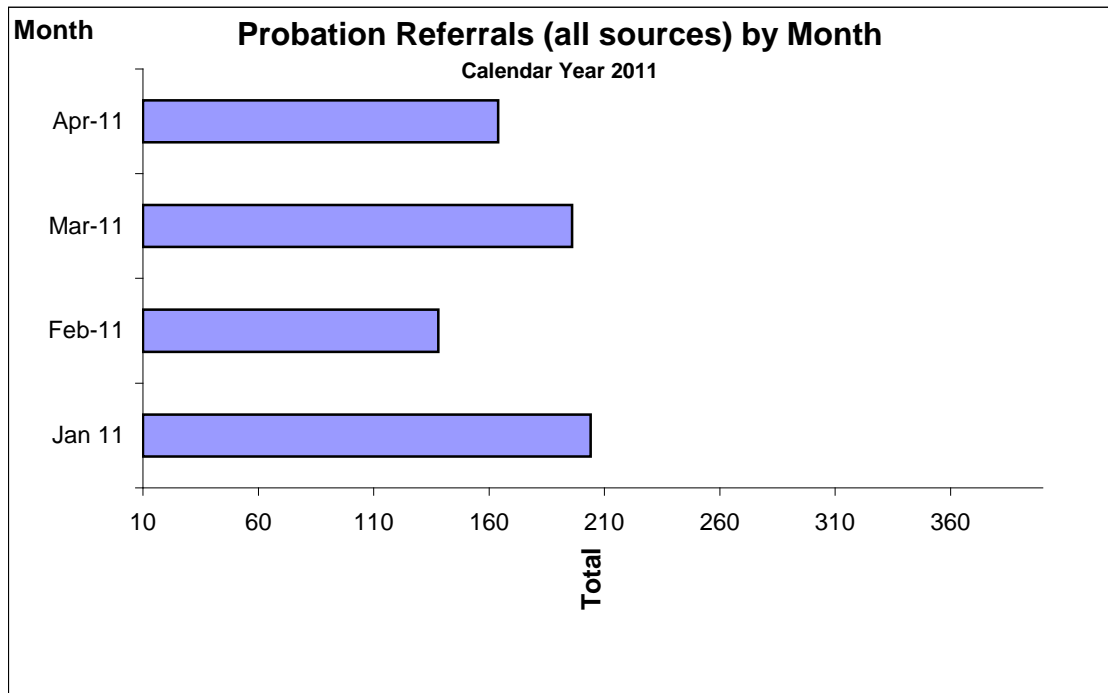
	Jan 11	Feb-11	Mar-11	Apr-11	May-11	Jun-11	Jul-11	Aug-11	Sep-11	Oct-11	Nov-11	Dec-11
Admissions	1	1	2	0								
Avg. Daily Pop.	22	22	22	22								



Probation Referrals by Month Calendar Year 2011

Probation Referrals (all sources) by Month (602 W&I)

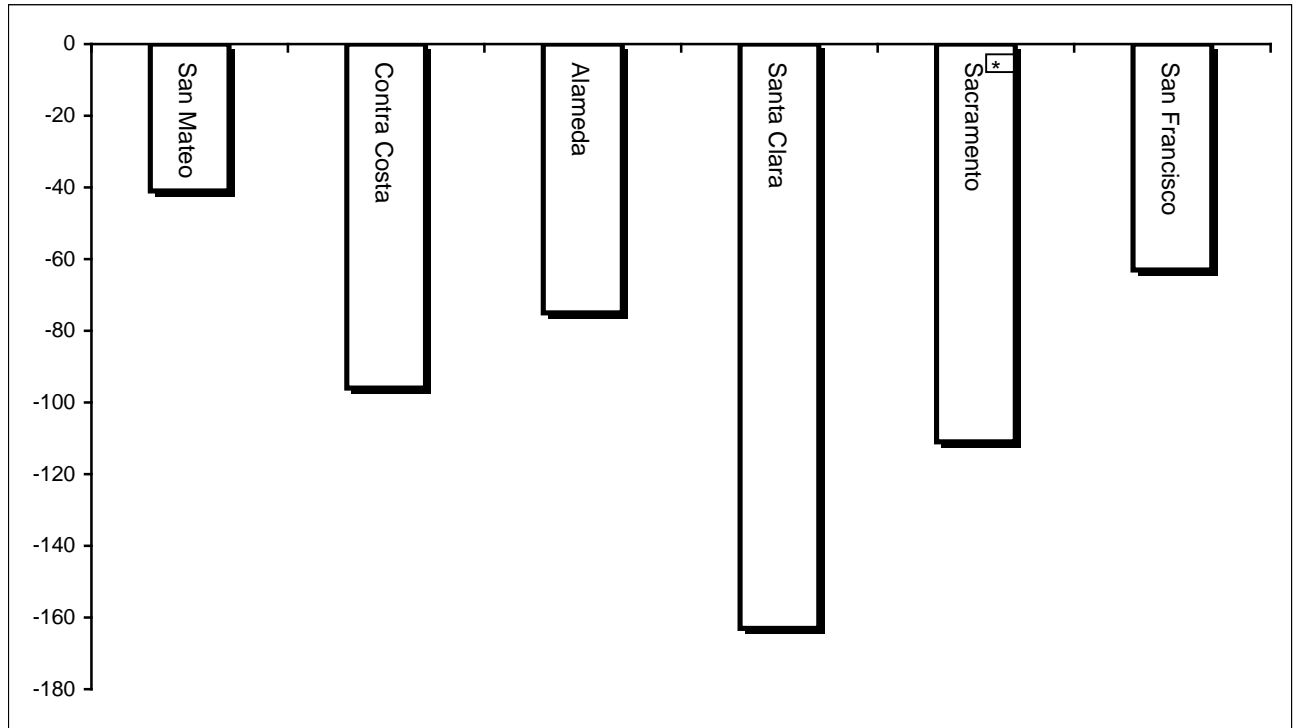
Jan 11	204
Feb-11	138
Mar-11	196
Apr-11	164
May-11	
Jun-11	
Jul-11	
Aug-11	
Sep-11	
Oct-11	
Nov-11	
Dec-11	



San Francisco Juvenile Probation Department
Monthly Incident Report Form
April 2011

Juvenile Hall	Assault on Staff	Fight	Attempted Escape	Fire	Attempted Suicide	Serious Contraband (Weapon illegal drug)	Use of Restraints	Self-Inflicted Injury	Assault on Staff with Injury	Fight with Injury
	2	4	0	0	0	5	2	1	0	0
	Escape	Death	Suicide	Property Damage	Use of Force					
	0	0	0	0	0					
Log Cabin Ranch	Battery on Staff	Injury to Staff due to Restraint of Minor	Fight	Battery Youth on Youth	Attempted Escape	AWOL	Attempted Suicide	Serious Contraband	Battery on Staff with Injury	Fire
	0	0	0	0	0	0	0	0	0	0
	Fight With Injury	Battery Youth on Youth with Injury	Escape	Death	Suicide	Major Property Destruction				
	0	0	0	0	0	0				

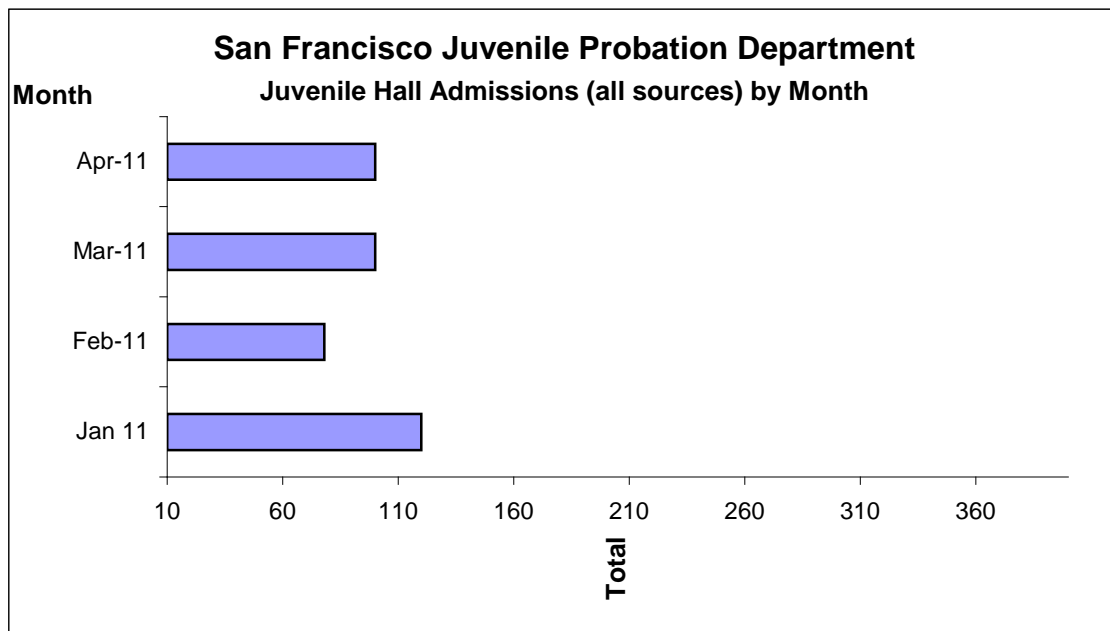
Bay Area Resident Juvenile Hall Comparison
Over/Under Capacity
on May 2nd, 2011



	Rated Capacity	Actual	Over/Under Capacity
San Mateo	180	139	-41
Contra Costa	240	144	-96
Alameda	280	205	-75
Santa Clara	360	197	-163
Sacramento	308	197	-111
San Francisco	150	87	-63

Juvenile Hall Admissions by Month Calendar Year 2011

Jan 11	120
Feb-11	78
Mar-11	100
Apr-11	100
May-11	
Jun-11	
Jul-11	
Aug-11	
Sep-11	
Oct-11	
Nov-11	
Dec-11	

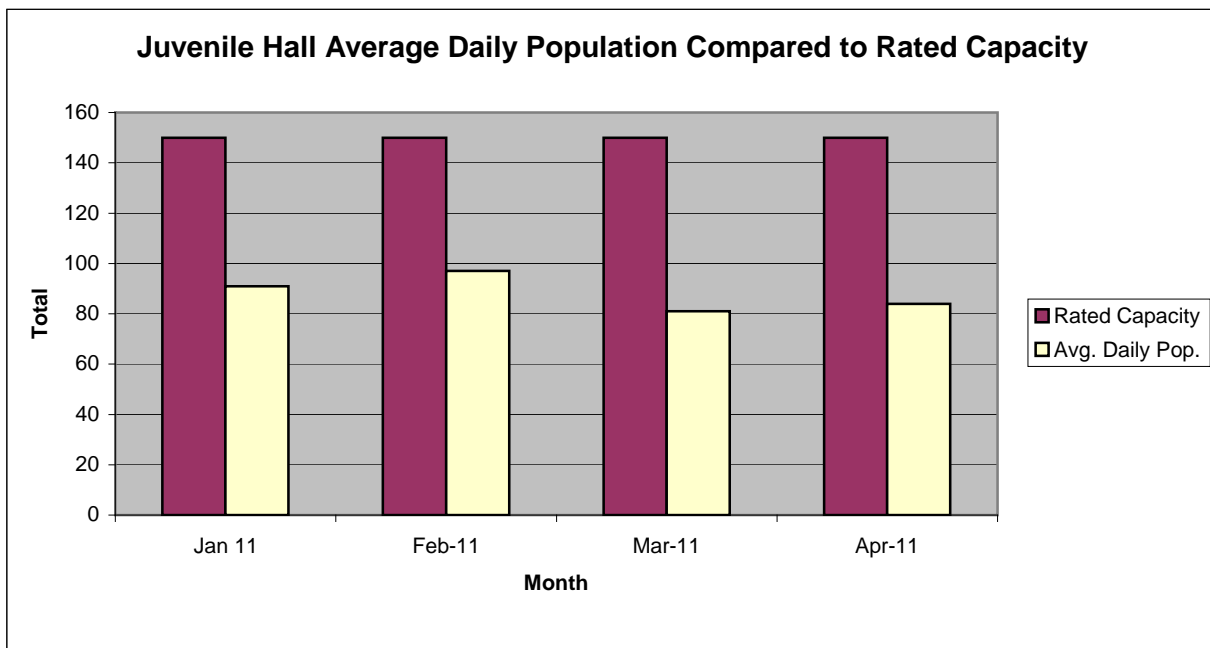


Characteristics of Juvenile Hall Detainees on April 30th, 2011

Detention Reason	Offense Code	MF*	Count	%
MURDER	187 (A) PC	F	4	4.60%
ATTEMPTED MURDER	664 /187 (A) PC	F	4	4.60%
KIDNAPPING	207 (A) PC	F	1	1.15%
ROBBERY	211 PC	F	24	27.59%
TRANSPORT/SELL NARCOTIC/CONTROLLED SUBSTANCE	11352 (A) HS	F	1	1.15%
BURGLARY	459 PC	F	1	1.15%
WILLFUL CRUELTY TO CHILD:POSSIBLE INJURY/DEATH	273 A (A) PC	F	1	1.15%
HAVE FIREARM AT PUBLIC/ETC SCHOOL	626.9(B) PC	F	1	1.15%
SEXUAL BATTERY	243.4(A) PC	F	1	1.15%
CAUSE HARM/DEATH OF ELDER /DEPENDENT ADULT	368 (B)(1) PC	F	1	1.15%
ASSAULT WITH FIREARM ON PERSON	245 (A)(2) PC	F	1	1.15%
ASSAULT:DEADLY WEAPON OR FORCE:POSSIBLE GREAT BODILY INJ	245 (A) PC	F	1	1.15%
FORCE OR ADW NOT FIREARM:GBI LIKELY	245 (A)(1) PC	F	9	10.34%
BATTERY W/SERIOUS BODILY INJURY	243 (D) PC	F	1	1.15%
FELON/ADDICT/ETC POSSESS FIREARM	12021 (A)(1) PC	F	1	1.15%
CARRY CONCEALED STOLEN WEAPON	12025 (B)(2) PC	F	1	1.15%
CARRY CONCEALED WEAPON WHILE ENGAGED IN CRIMINAL STREET GANG	12025 (B)(3) PC	F	1	1.15%
THREATEN CRIME W/INTENT TO TERRORIZE	422 PC	F	1	1.15%
BURGLARY:SECOND DEGREE	459 PC	F	1	1.15%
POSSESS ANY ASSAULT WEAPON	12280 (B) PC	F	1	1.15%
CARRY LOADED FIREARM IN PUBLIC UNDER SPECIFIC CIRCUMSTANCES	12031 (A)(1) PC	F	1	1.15%
OBSTRUCT/RESIST/ETC PUBLIC/PEACE OFFICER/EMERGENCY MED TECH	148 (A)(1) PC	M	1	1.15%
VANDALISM (\$400 OR MORE)	594 (B)(1) PC	M	1	1.15%
VANDALISM [\$1000 TO UNDER \$5000]	594 (A) PC	M	1	1.15%
BATTERY	242 PC	M	1	1.15%
ENTER/REMAIN ON SCHOOL GROUNDS W/O REGISTERING	627.2 PC	M	1	1.15%
FAIL TO OBEY ORDER OF JUVENILE COURT 602 WI	777 (A)(2) WI	M	4	4.60%
VIOLATION(S) OF HOME SUPERVISION CONDITION	628.1 WI	M	3	3.45%
CHANGE OF PLACEMENT/PLACEMENT FAILURE	737 WI	M	2	2.30%
BENCH WARRANT	BENCH WARRANT		3	3.45%
ARREST WARRANT	WRNT602		8	9.20%
COURT ORDER	CTORD 602 XX		4	4.60%
*M=Misdemeanor; F=Felony		Total	87	100.00%

San Francisco Juvenile Probation Department

	Jan 11	Feb-11	Mar-11	Apr-11	May-11	Jun-11	Jul-11	Aug-11	Sep-11	Oct-11	Nov-11	Dec-11
Rated Capacity	150	150	150	150								
Avg. Daily Pop.	91	97	81	84								



Juvenile Hall Average Length of Stay

For the Month of April 2011

¹Released

Range of Days	<i>1-10 days</i>	<i>11-20 days</i>	<i>21-30 days</i>	<i>30 or more days</i>	Total
# of Youth Released	43	28	11	10	92
% of Population	46.74%	30.43%	11.96%	10.87%	100%
# of Days	172	428	274	621	1495
% of Total Days	11.51%	28.63%	18.33%	41.54%	100%
Average Length of Stay	4.00	15.29	24.91	62.10	16.25

²In Custody

Range of Days	<i>1-10 days</i>	<i>11-20 days</i>	<i>21-30 days</i>	<i>30 or more days</i>	Total
# of Youth Detained	21	15	10	41	87
% of Population	24.14%	17.24%	11.49%	47.13%	100%
# of Days	111	201	259	4713	5284
% of Total Days	2.10%	3.80%	4.90%	89.19%	100%
Average Length of Stay	5.29	13.40	25.90	114.95	60.74

Notes: Less than one day of stay is calculated as one day.

¹Length of stay is calculated according to release date for those who are released.

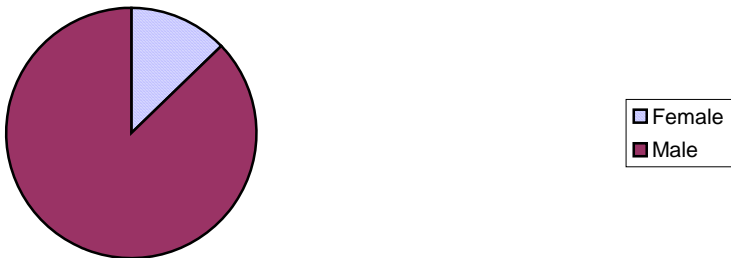
²For those still in custody, length of stay is calculated at the last day of the month.

Section III

Demographics

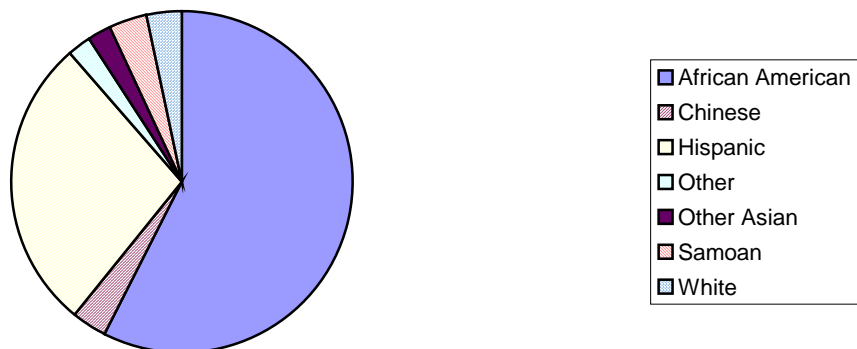
Gender	Frequency	Percent
Female	11	12.64%
Male	76	87.36%
Total	87	100.00%

**Demographic Characteristics
Of Juvenile Hall Detainees on 4/30/11 by Gender**

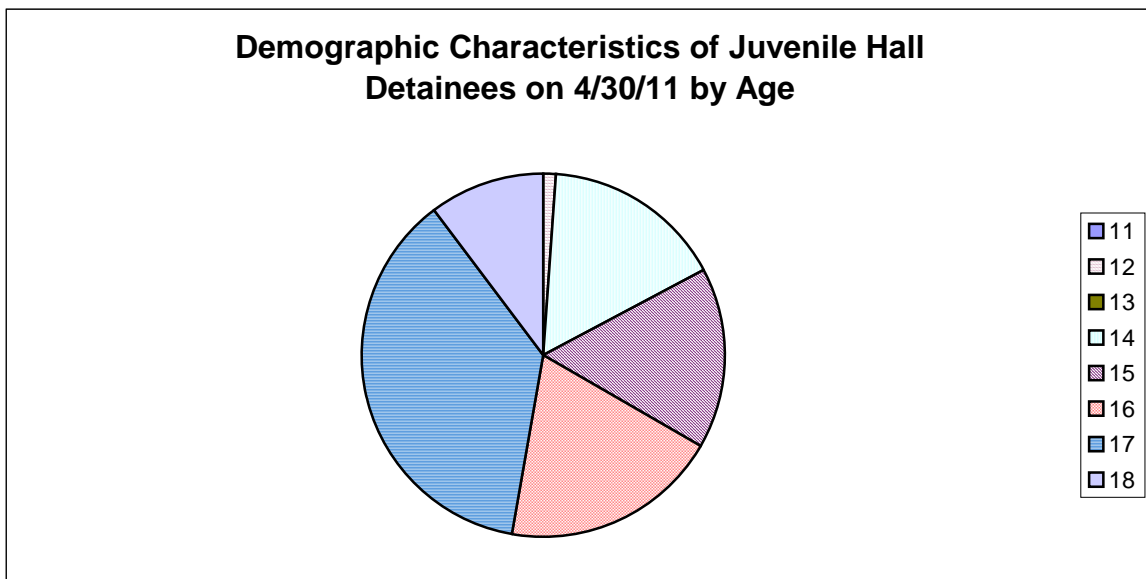


Race/Ethnic Origin	Frequency	Percent
African American	50	57.47%
Chinese	3	3.45%
Hispanic	24	27.59%
Other	2	2.30%
Other Asian	2	2.30%
Samoan	3	3.45%
White	3	3.45%
Total	87	100.00%

**Demographic Characteristics of Juvenile Hall Detainees on
4/30/11 by Race**

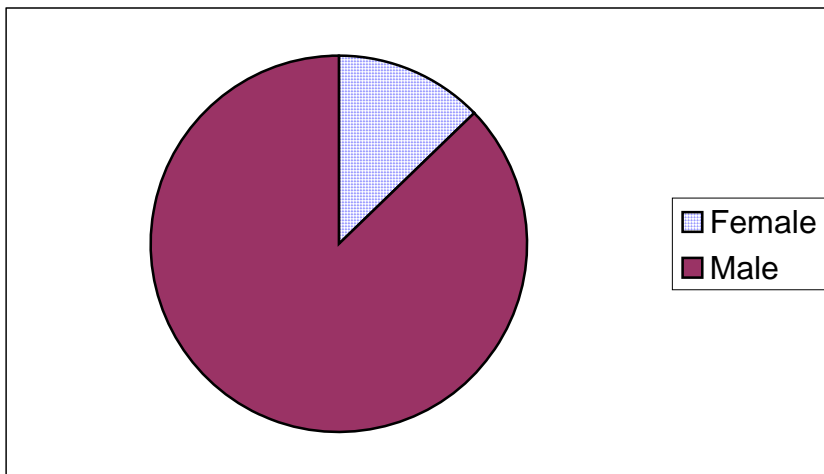


Age	Frequency	Percent
11	0	0.00%
12	1	1.15%
13	0	0.00%
14	14	16.09%
15	14	16.09%
16	17	19.54%
17	32	36.78%
18	9	10.34%
Total	87	100.00%



Demographic Characteristics of Juvenile Hall Detainees
on 4/30/2011
Age by Gender

Age	Female	Male	Total	
11	0	0	0	0.00%
12	0	1	1	1.15%
13	0	0	0	0.00%
14	4	10	14	16.09%
15	0	14	14	16.09%
16	4	13	17	19.54%
17	3	29	32	36.78%
18 and over	0	9	9	10.34%
Total	11	76	87	100.00%
	12.64%	87.36%	100.00%	



Demographic Characteristics
Of Juvenile Hall Detainees on April 30th, 2011

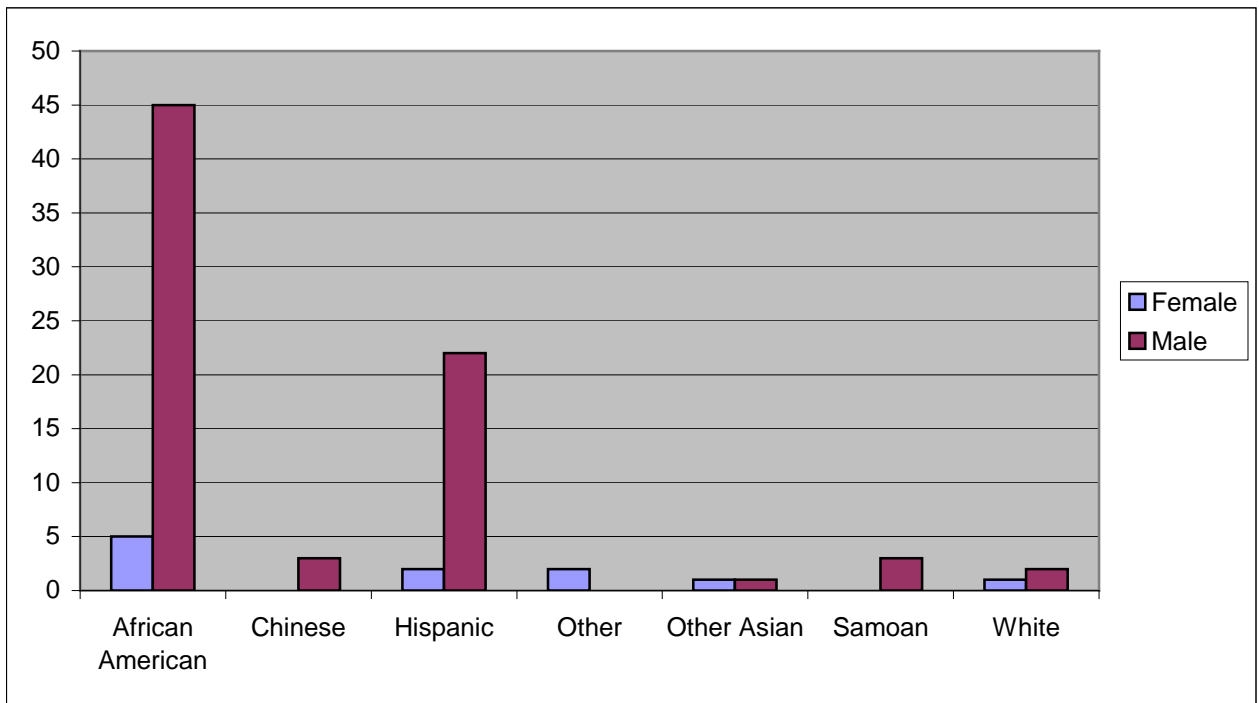
Geographic Residence of Youth	Count	%
Richmond	2	2.3%
Marina	0	0.0%
North of Market/Downtown	2	2.3%
Treasure Island/Yerba Buena Island	1	1.1%
Western Addition	9	10.3%
South of Market/Tenderloin	0	0.0%
Sunset	2	2.3%
Haight Ashbury/Castro/Upper Market	2	2.3%
Inner Mission	8	9.2%
Potrero	0	0.0%
Parkside	3	3.4%
Ingleside (West of Twin Peaks)	6	6.9%
Outer Mission	12	13.8%
Bayview	19	21.8%
Non-San Francisco and Unavailable	21	24.1%
Total	87	100.0%

Non-San Francisco and Unavailable	Count	%
Brisbane	1	4.8%
Brockway	1	4.8%
Daly City	2	9.5%
Fairfield	1	4.8%
Hayward	1	4.8%
Marin City	1	4.8%
Oakland	2	9.5%
Pacifica	1	4.8%
Richmond	2	9.5%
Sacramento	2	9.5%
San Mateo	1	4.8%
Santa Rosa	1	4.8%
South San Francisco	1	4.8%
Springfield	1	4.8%
Unavailable	3	14.3%
Total	21	100.0%

Demographic Characteristics
Of Juvenile Hall Detainees on April 30th, 2011

Race/Ethnic Origin by Gender

Race/Ethnicity	Female	Male	Total	%
African American	5	45	50	57.5%
Chinese	0	3	3	3.4%
Hispanic	2	22	24	27.6%
Other	2	0	2	2.3%
Other Asian	1	1	2	2.3%
Samoan	0	3	3	3.4%
White	1	2	3	3.4%
Total	11	76	87	100.0%

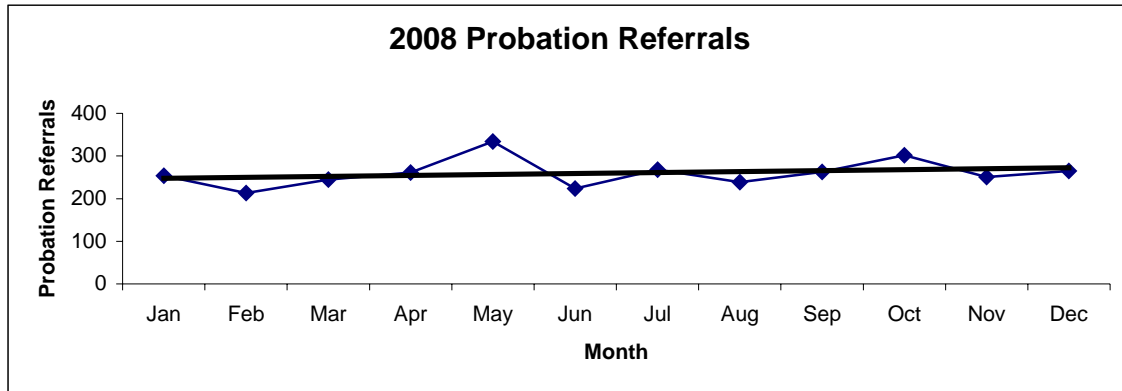


Section IV

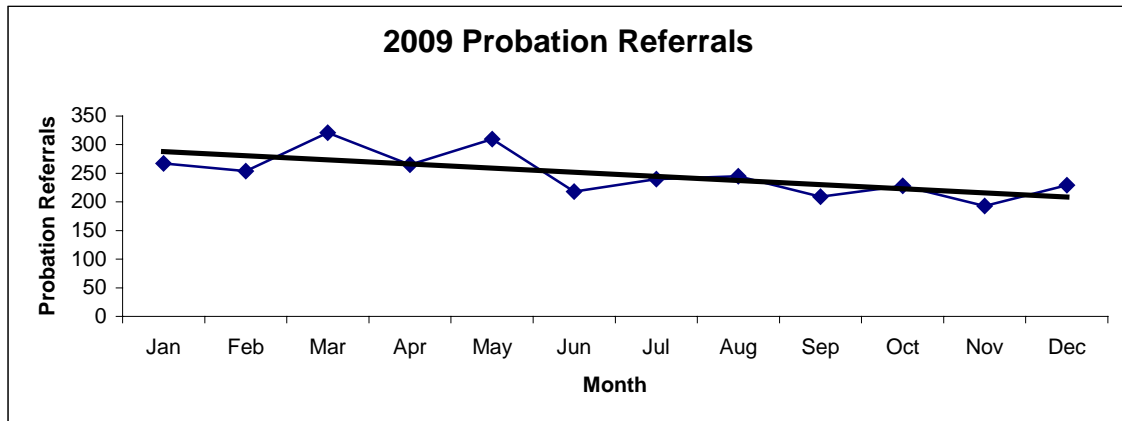
Historical Information

San Francisco Juvenile Probation Department
Probation Referrals (all sources) By Month
 (2008-2010)

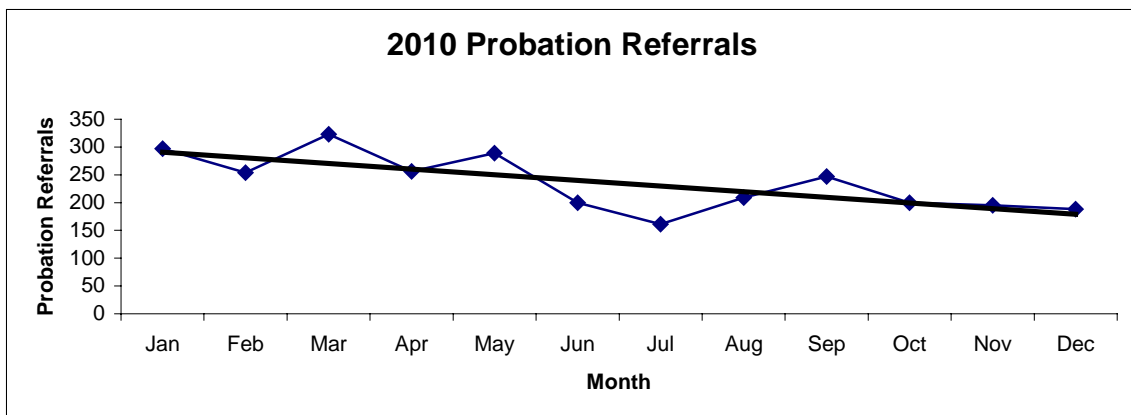
2008 Probation Referrals	Jan	Feb	Mar	Apr	May	Jun	Jul	Aug	Sep	Oct	Nov	Dec	Total
	254	213	245	261	334	224	268	239	263	302	251	265	3119



2009 Probation Referrals	Jan	Feb	Mar	Apr	May	Jun	Jul	Aug	Sep	Oct	Nov	Dec	Total
	267	254	321	265	310	218	240	245	209	228	193	229	2979

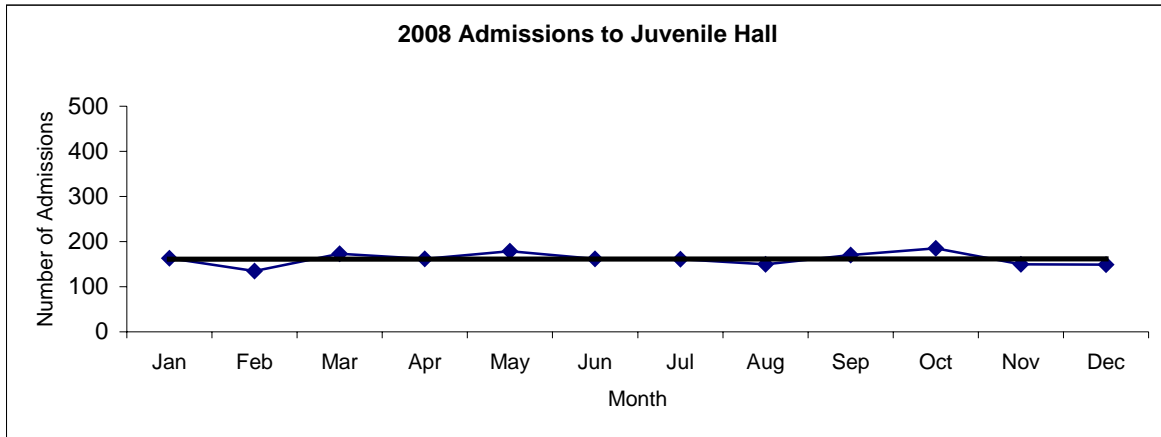


2010 Probation Referrals	Jan	Feb	Mar	Apr	May	Jun	Jul	Aug	Sep	Oct	Nov	Dec	Total
	297	254	323	256	289	200	161	209	247	200	195	188	2819

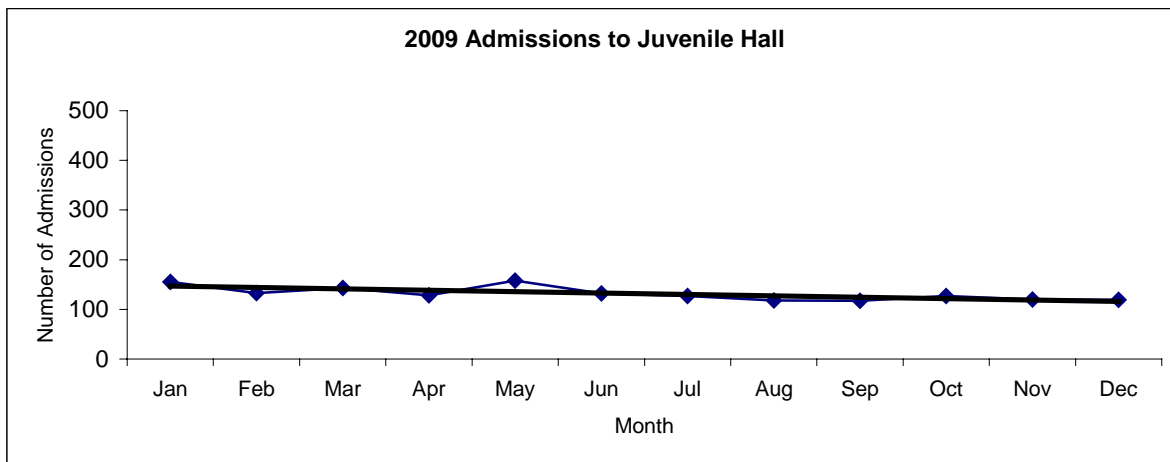


San Francisco Juvenile Probation
Juvenile Hall Admissions By Month
(2008-2010)

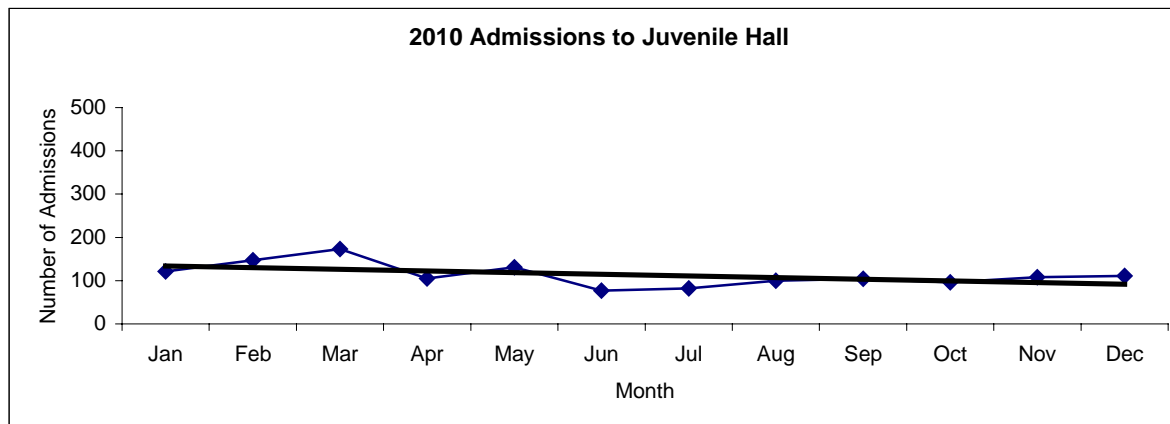
2008 Admissions	Jan	Feb	Mar	Apr	May	Jun	Jul	Aug	Sep	Oct	Nov	Dec	Total
	163	135	173	162	179	162	161	150	170	185	150	149	1939



2009 Admissions	Jan	Feb	Mar	Apr	May	Jun	Jul	Aug	Sep	Oct	Nov	Dec	Total
	155	133	143	128	158	132	127	118	117	127	120	119	1577

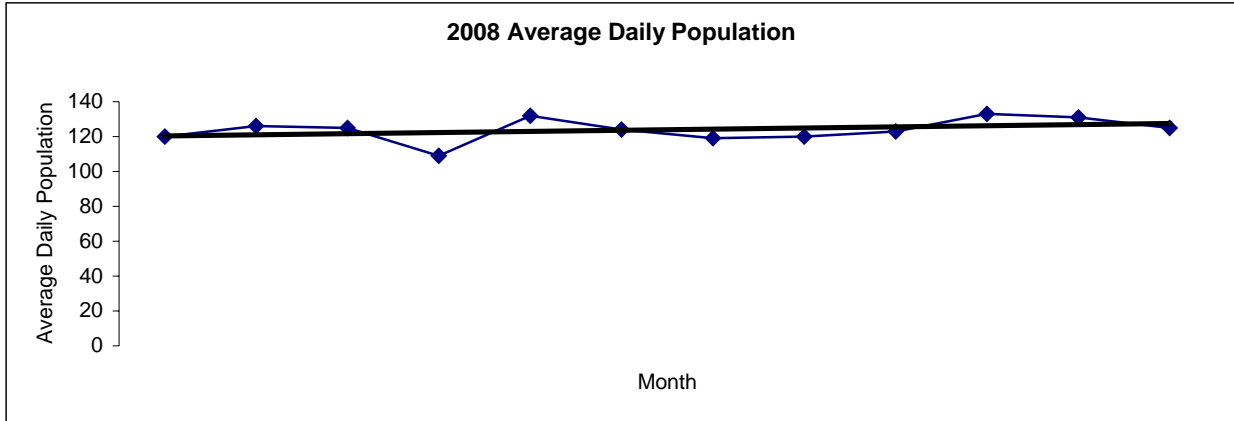


2010 Admissions	Jan	Feb	Mar	Apr	May	Jun	Jul	Aug	Sep	Oct	Nov	Dec	Total
	121	147	173	105	131	77	82	100	104	96	108	111	1355

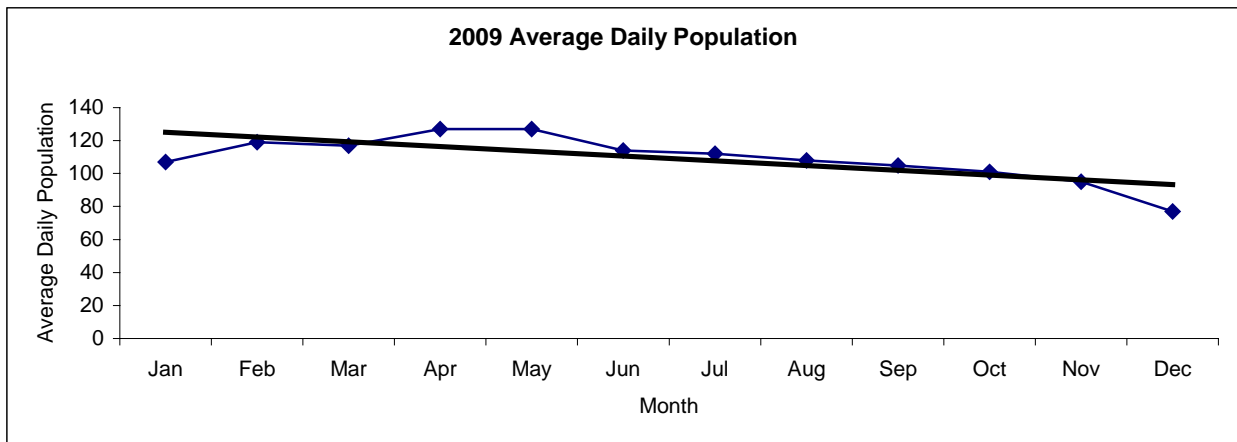


San Francisco Juvenile Probation
Juvenile Hall Average Daily Population By Month
 (2008-2010)

2008 Avg. Daily Pop.	Jan	Feb	Mar	Apr	May	Jun	Jul	Aug	Sep	Oct	Nov	Dec	Total
	120	126	125	109	132	124	119	120	123	133	131	125	124



2009 Avg. Daily Pop.	Jan	Feb	Mar	Apr	May	Jun	Jul	Aug	Sep	Oct	Nov	Dec	Total
	107	119	117	127	127	114	112	108	105	101	95	77	109



2010 Avg. Daily Pop.	Jan	Feb	Mar	Apr	May	Jun	Jul	Aug	Sep	Oct	Nov	Dec	Total
	85	104	110	107	99	97	90	88	90	84	79	92	94

