

City and County of San Francisco



Juvenile Probation Department

Monthly Report for August 2011

Presented to the Juvenile Probation Commission

September 13th, 2011

William P. Siffermann
Chief Probation Officer

Prepared by Jose Luis Perla
Information Technology Director
(415) 753-7686
jose.perla@sfgov.org

Table of Contents

Section I Summary Reports

Juvenile Hall, Log Cabin Ranch Summary Statistics	1
Probation Services Summary and California Youth Authority Statistics	2
Active Cases by Units	3

Section II Current Month General Detail

Probation Referrals, Juvenile Admissions And Average Daily Population	4
Juvenile Hall Admissions and Average Daily Population	5
Commitments to out-of-home placement	6
Commitments to California Youth Authority	7
Log Cabin Ranch Admissions and Average Daily Population	8
Probation Referrals	9
Juvenile Hall And Log Cabin Ranch Incident Report	10
Bay Area Resident Juvenile Hall Comparison	11
Juvenile Hall Admissions	12
Juvenile Hall Detainees by Detention Reason	13
Juvenile Hall Average Daily Population by Rated Capacity	14
Juvenile Hall Average Length of Stay	15

Section III Demographics

Juvenile Hall Detainees by Sex and Race/Ethnic Origin	16
Juvenile Hall Detainees by Age	17
Juvenile Hall Detainees by Age and Sex	18
Juvenile Hall Detainees by Geographic Residence of Youth	19
Juvenile Hall Detainees by Race/Ethnic Origin and Sex	20

Section IV

Historical Information

2008-2010 Probation Referrals	21
2008-2010 Juvenile Hall Admissions	22
2008-2010 Juvenile Hall Average Daily Population	23

Section I

Summary Reports

Summary Report for the Month of August 2011

Juvenile Hall	<i>July 2010</i>	<i>July 2011</i>	<i>August 2010</i>	<i>August 2011</i>	<i>YTD 2010</i>	<i>YTD 2011</i>
Admissions	82	100	100	95	936	799
Average Daily Population	90	87	88	82	97	87
Average Length of Stay (Releases)	38.94	35.56	38.86	19.83	25.69	26.93
Average Length of Stay (In Custody)	65.61	45.11	55.63	55.90	57.90	53.64
Releases	88	85	99	105	920	802
Log Cabin Ranch						
Admissions:						
First Time Commitments	2	5	4	4	17	17
Recommitments	0	0	0	0	0	0
<i>Total</i>	2	5	4	4	17	17
Releases:						
Graduated	0	0	2	6	11	13
Escape	0	0	2	0	4	0
Other releases	0	2	1	0	4	8
<i>Total</i>	0	2	5	6	19	21
Average Daily Population	14	21	14	20	12	21

Summary Report for the Month of August 2011

Probation Services	July 2011	August 2011	Year To Date 2011
Probation Referrals	168	166	1421
Total Petitions including violation of probation	71	89	782
Selected Court Dispositions:			
California Youth Authority	0	0	0
Log Cabin Ranch	4	4	18
Out of Home Placement	11	12	102
Ward Probation	34	40	249
Non-Ward Probation (725a WI)	2	3	22
Informal Probation (654 WI)	9	10	98
Violation of Probation Petitions Filed	11	19	101
California Youth Authority Monthly Count San Francisco County Juvenile Court Cases August 31 st , 2011			
Category	Institutions	Parole	
Males			
White	0	1	
Hispanic	0	1	
African American	5	2	
Asian	0	0	
Native American	0	0	
Filipino	0	0	
Pacific Islander	1	0	
Other	0	0	
Total	6	4	
Females			
White	0	0	
Hispanic	0	0	
African American	0	0	
Asian	0	0	
Native American	0	0	
Filipino	0	0	
Pacific Islander	0	0	
Other	0	0	
Total	0	0	
Grand Total	6	4	

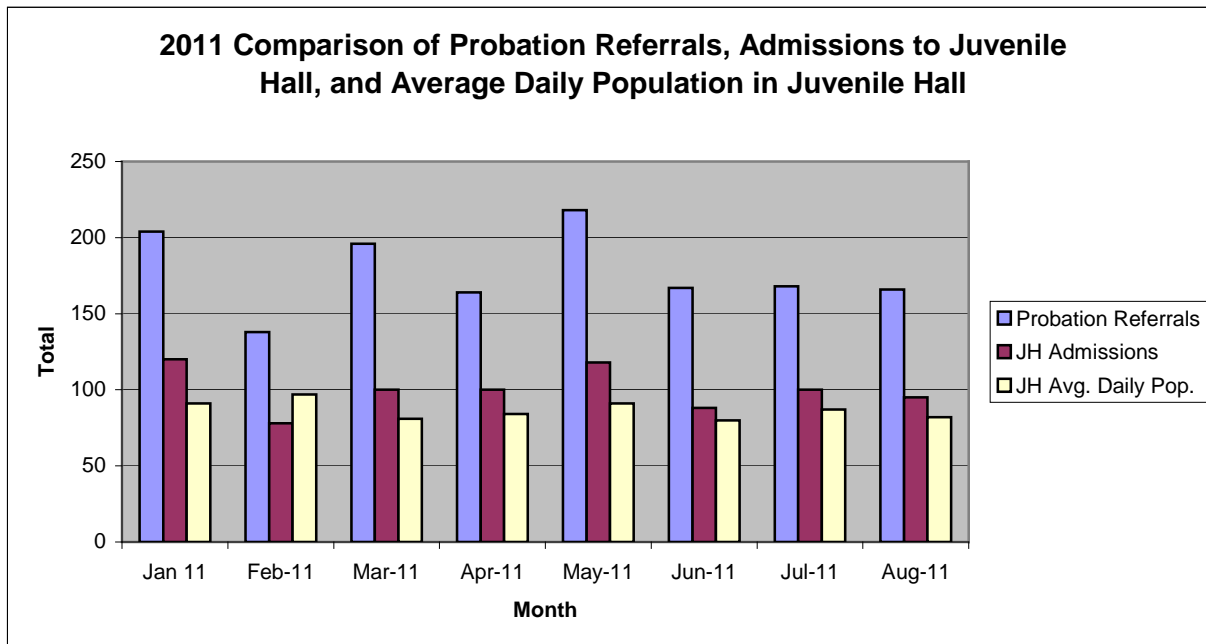
Summary Report for the Month of August 2011

Probation Services			
Active Cases by Units	July 2011	August 2011	August Average # Youth by PO
CARC	183	190	190
Intake Green (Custody Screening Investigation)	100	94	11
Intake Gold (Probation Services 1)	171	149	21
FITS (Probation Services 2)	200	191	19
Serious Offenders (Probation Services 3)	203	216	21
Private Placement (Probation Services 4)	182	180	22
Special Services	6	6	1
<i>Total</i>	1,045	1,026	41
Total Active Intake Cases	469	445	
Total Probation/Supervision Cases	576	581	

Section II
Current Month
General Detail

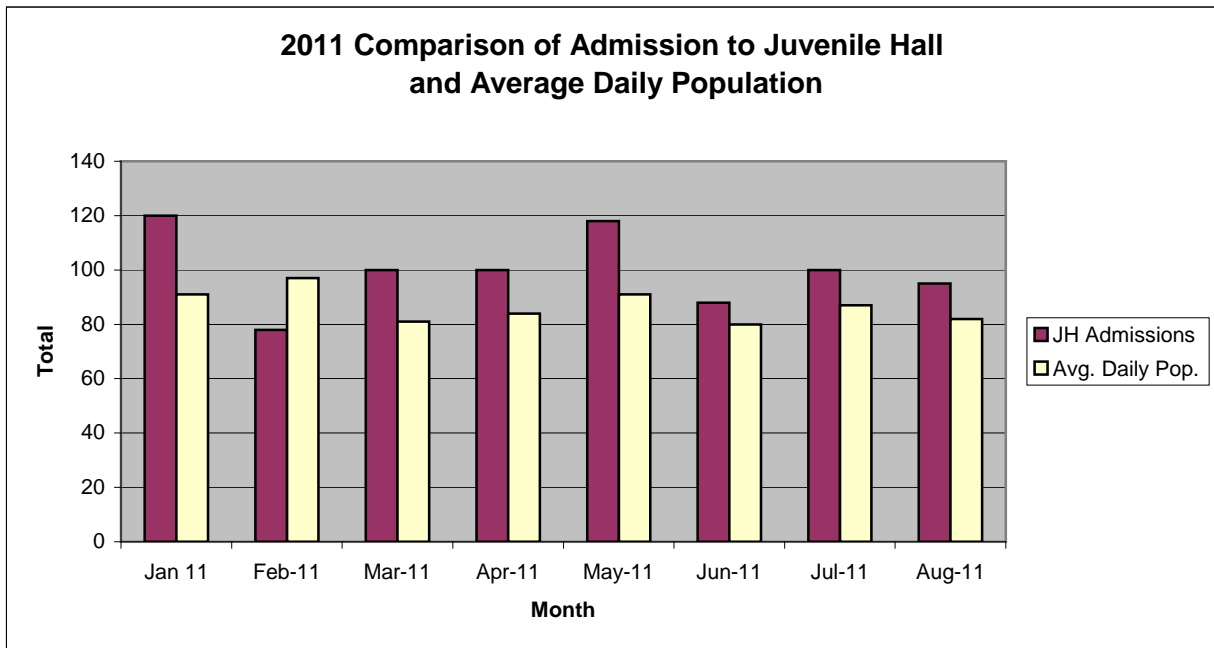
San Francisco Juvenile Probation Department

	Jan 11	Feb-11	Mar-11	Apr-11	May-11	Jun-11	Jul-11	Aug-11	Sep-11	Oct-11	Nov-11	Dec-11
Probation Referrals	204	138	196	164	218	167	168	166				
JH Admissions	120	78	100	100	118	88	100	95				
JH Avg. Daily Pop.	91	97	81	84	91	80	87	82				



San Francisco Juvenile Probation Department

	Jan 11	Feb-11	Mar-11	Apr-11	May-11	Jun-11	Jul-11	Aug-11	Sep-11	Oct-11	Nov-11	Dec-11
JH Admissions	120	78	100	100	118	88	100	95				
Avg. Daily Pop.	91	97	81	84	91	80	87	82				

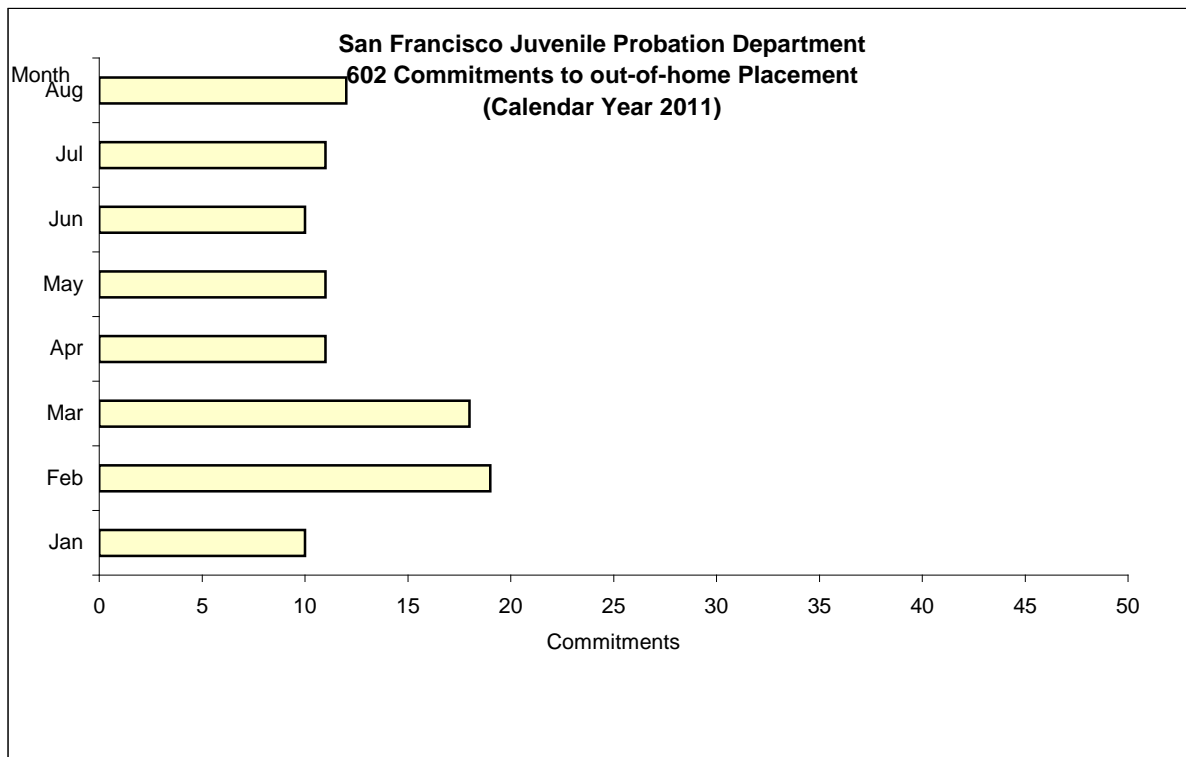


Out-of-Home Placement¹

Commitments of 602's

Calendar Year 2011

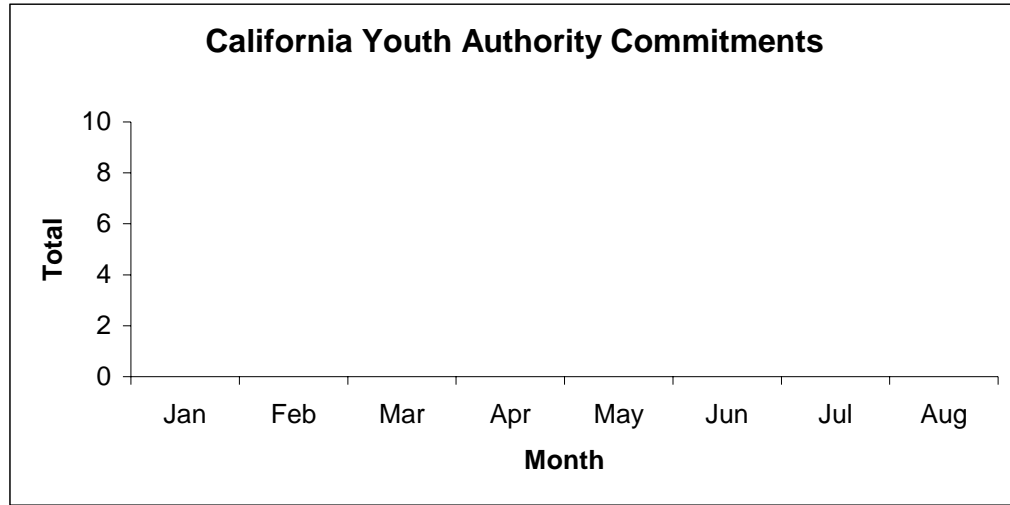
Commitments	Jan	Feb	Mar	Apr	May	Jun	Jul	Aug	Sep	Oct	Nov	Dec	Total
2011	10	19	18	11	11	10	11	12					102



¹ This report is based on 602 Commitments to out-of-home placements. If there is a 601 commitment, it will show as a footnote here. Figures are regularly updated to include reports from previous reporting periods.

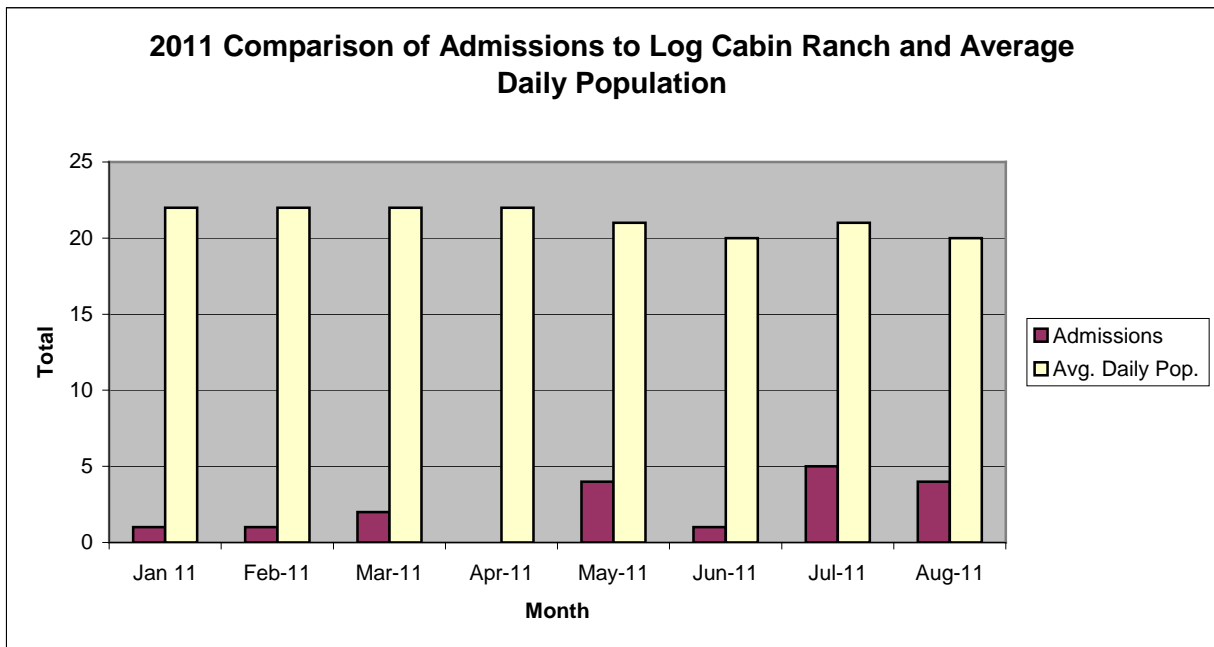
California Youth Authority
Commitments
(Calendar Year 2011)

Commitments	Jan	Feb	Mar	Apr	May	Jun	Jul	Aug	Sep	Oct	Nov	Dec	Total
2011	0	0	0	0	0	0	0	0					0



San Francisco Juvenile Probation Department

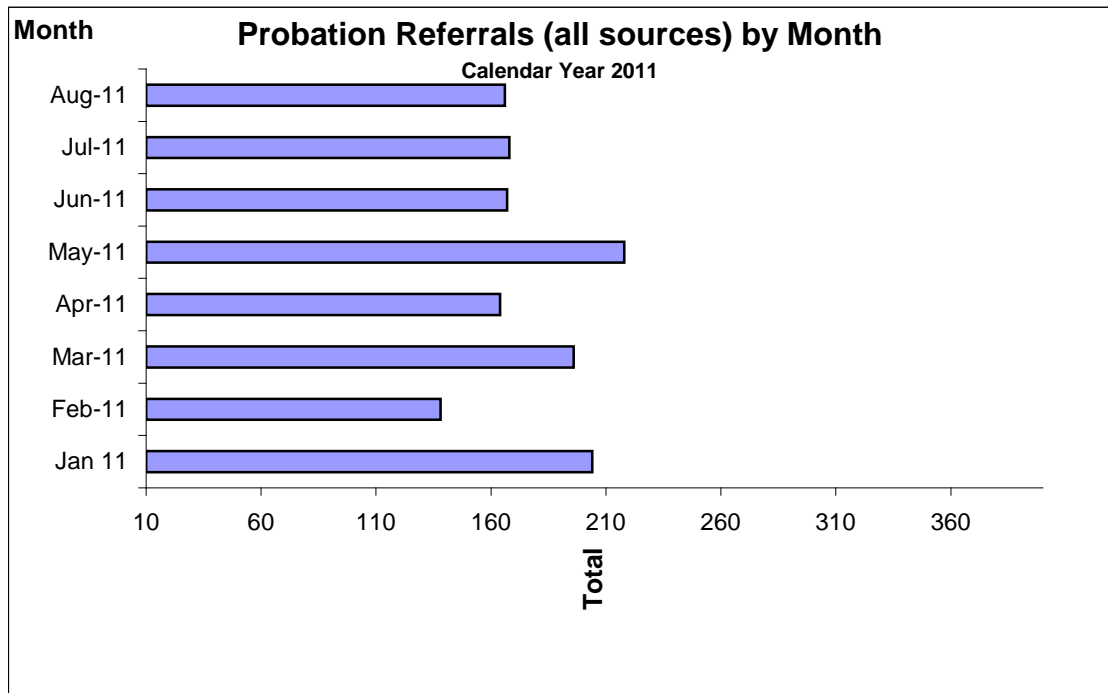
	Jan 11	Feb-11	Mar-11	Apr-11	May-11	Jun-11	Jul-11	Aug-11	Sep-11	Oct-11	Nov-11	Dec-11
Admissions	1	1	2	0	4	1	5	4				
Avg. Daily Pop.	22	22	22	22	21	20	21	20				



Probation Referrals by Month Calendar Year 2011

Probation Referrals (all sources) by Month (602 W&I)

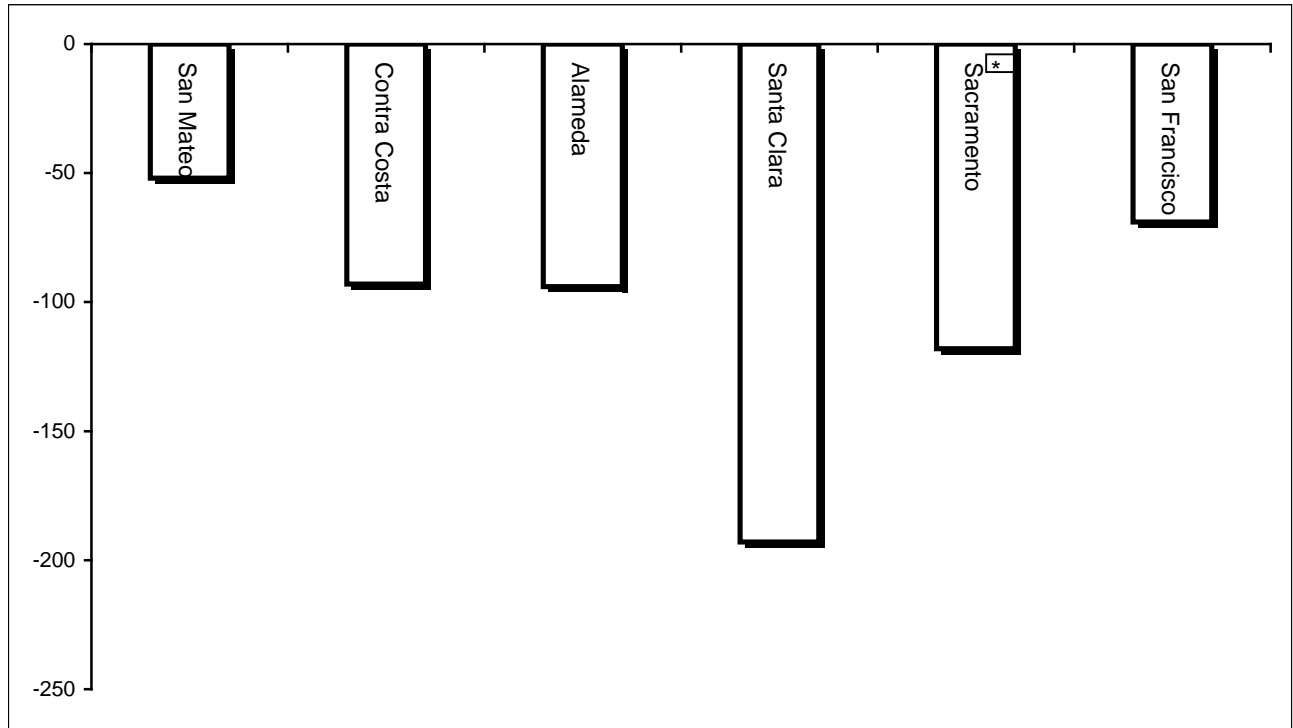
Jan 11	204
Feb-11	138
Mar-11	196
Apr-11	164
May-11	218
Jun-11	167
Jul-11	168
Aug-11	166
Sep-11	
Oct-11	
Nov-11	
Dec-11	



San Francisco Juvenile Probation Department
Monthly Incident Report Form
August 2011

Juvenile Hall	Assault on Staff	Fight	Attempted Escape	Fire	Attempted Suicide	Serious Contraband (Weapon illegal drug)	Use of Restraints	Self-Inflicted Injury	Assault on Staff with Injury	Battery Youth on Youth
	1	3	0	0	0		0	0	0	1
	Escape	Death	Suicide	Property Damage	Use of Force	Contraband				
	0	0	0	0	3	3				
Log Cabin Ranch	Battery on Staff	Injury to Staff due to Restraint of Minor	Fight	Battery Youth on Youth	Attempted Escape	AWOL	Attempted Suicide	Serious Contraband	Battery on Staff with Injury	Fire
	0	0	1	0	0	0	0	0	0	0
	Fight With Injury	Battery Youth on Youth with Injury	Escape	Death	Suicide	Major Property Destruction				
	0	0	0	0	0	0				

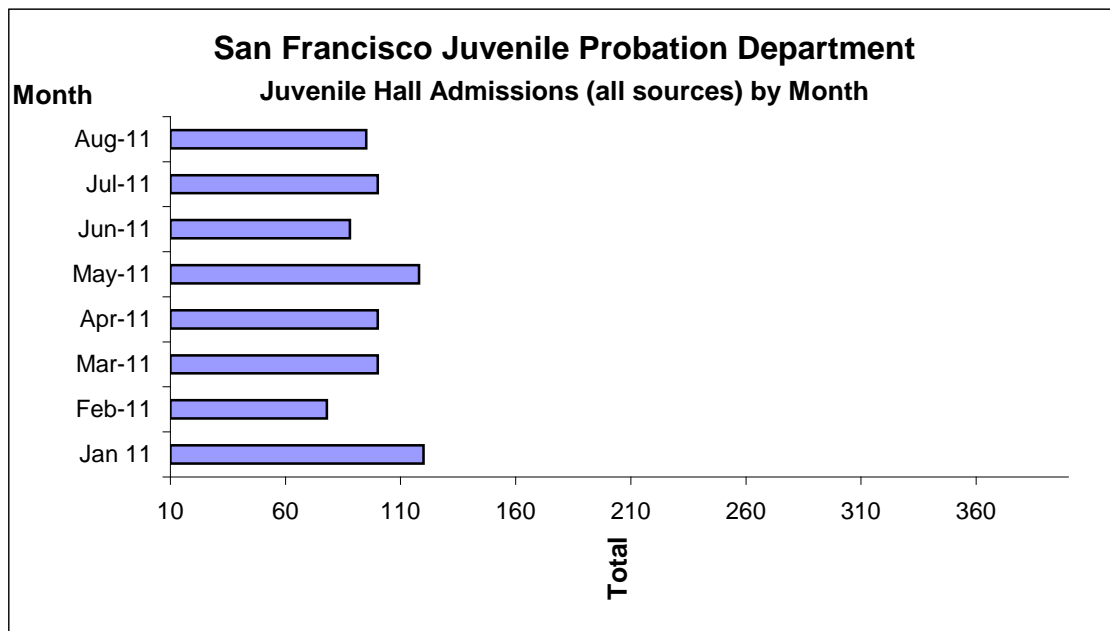
Bay Area Resident Juvenile Hall Comparison
Over/Under Capacity
on September 2nd, 2011



	Rated Capacity	Actual	Over/Under Capacity
San Mateo	180	128	-52
Contra Costa	240	147	-93
Alameda	280	186	-94
Santa Clara	360	167	-193
Sacramento	308	190	-118
San Francisco	150	81	-69

Juvenile Hall Admissions by Month Calendar Year 2011

Jan 11	120
Feb-11	78
Mar-11	100
Apr-11	100
May-11	118
Jun-11	88
Jul-11	100
Aug-11	95
Sep-11	
Oct-11	
Nov-11	
Dec-11	

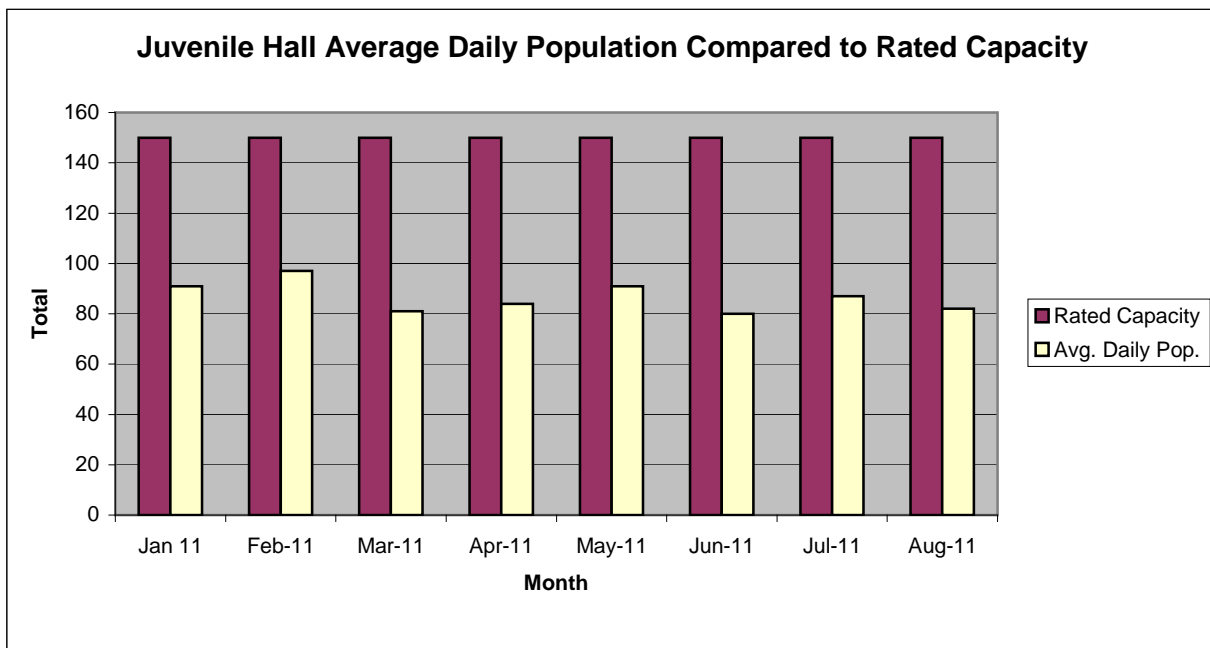


Characteristics of Juvenile Hall Detainees on August 31st, 2011

Detention Reason	Offense Code	MF*	Count	%
MURDER	187 (A) PC	F	3	3.57%
ATTEMPTED MURDER	664 /187 (A) PC	F	10	11.90%
KIDNAPPING	207 (A) PC	F	1	1.19%
ROBBERY	211 PC	F	18	21.43%
POSSESS/PURCHASE COCAINE BASE FOR SALE	11351.5 HS	F	1	1.19%
BURGLARY	459 PC	F	2	2.38%
ROBBERY:SECOND DEGREE	212.5(C) PC	F	1	1.19%
BATTERY BY GASSING OF PO/DETENTION/INVEST/PROSECUTION EMP	243.9(A) PC	F	1	1.19%
ASSAULT:DEADLY WEAPON OR FORCE:POSSIBLE GREAT BODILY INJ	245 (A) PC	F	1	1.19%
FORCE OR ADW NOT FIREARM:GBI LIKELY	245 (A)(1) PC	F	8	9.52%
FELON/ADDICT/ETC POSSESS FIREARM	12021 (A)(1) PC	F	1	1.19%
TAMPER WITH IDENTIFICATION MARKS ON FIREARM	12090 PC	F	1	1.19%
CARRY CONCEALED WEAPON IN VEHICLE W/PRIOR FELONY CONVICTION	12025 (B)(1) PC	F	1	1.19%
CARRY CONCEALED WEAPON WHILE ENGAGED IN CRIMINAL STREET GANG	12025 (B)(3) PC	F	1	1.19%
BATTERY AGAINST EMERGENCY PERSON/ETC	243 (C)(1) PC	F	1	1.19%
THREATEN CRIME W/INTENT TO TERRORIZE	422 PC	F	1	1.19%
GRAND THEFT:MONEY/LABOR/PROPERTY OVER \$400	487 (A) PC	F	1	1.19%
POSSESS/MANUFACTURE/SELL DANGEROUS WEAPONS/EXPLOSIVES/ETC	12020 (A) PC	F	1	1.19%
DRIVING UNDER INFLUENCE ALCOHOL/0.08% WITH PRIOR	23152 (B) VC	F	1	1.19%
CARRY LOADED FIREARM IN PUBLIC UNDER SPECIFIC CIRCUMSTANCES	12031 (A)(1) PC	F	1	1.19%
VANDALISM (\$400 OR MORE)	594 (B)(1) PC	F	1	1.19%
OBSTRUCT/RESIST/ETC PUBLIC/PEACE OFFICER/EMERGENCY MED TECH	148 (A)(1) PC	M	2	2.38%
BATTERY ON TRANSPORTATION PERSONNEL/PASSENGER	243.3 PC	M	1	1.19%
PETTY THEFT	484 (A) PC	M	1	1.19%
FAIL TO OBEY ORDER OF JUVENILE COURT 602 WI	777 (A)(2) WI	M	2	2.38%
VIOLATION(S) OF HOME SUPERVISION CONDITION	628.1 WI	M	1	1.19%
CHANGE OF PLACEMENT/PLACEMENT FAILURE	737 WI	M	5	5.95%
WARRANT 602	WRNT602		8	9.52%
BENCH WARRANT	BENCH WARRANT		4	4.76%
COURT ORDER	CTORD 602		3	3.57%
*F=Felony; M=Misdemeanor		Total	84	100.00%

San Francisco Juvenile Probation Department

	Jan 11	Feb-11	Mar-11	Apr-11	May-11	Jun-11	Jul-11	Aug-11	Sep-11	Oct-11	Nov-11	Dec-11
Rated Capacity	150	150	150	150	150	150	150	150				
Avg. Daily Pop.	91	97	81	84	91	80	87	82				



Juvenile Hall Average Length of Stay

For the Month of August 2011

¹Released

Range of Days	<i>1-10 days</i>	<i>11-20 days</i>	<i>21-30 days</i>	<i>30 or more days</i>	Total
# of Youth Released	56	10	19	20	105
% of Population	53.33%	9.52%	18.10%	19.05%	100%
# of Days	275	155	463	1189	2082
% of Total Days	13.21%	7.44%	22.24%	57.11%	100%
Average Length of Stay	4.91	15.50	24.37	59.45	19.83

²In Custody

Range of Days	<i>1-10 days</i>	<i>11-20 days</i>	<i>21-30 days</i>	<i>30 or more days</i>	Total
# of Youth Detained	17	16	12	39	84
% of Population	20.24%	19.05%	14.29%	46.43%	100%
# of Days	88	230	307	4071	4696
% of Total Days	1.87%	4.90%	6.54%	86.69%	100%
Average Length of Stay	5.18	14.38	25.58	104.38	55.90

Notes: Less than one day of stay is calculated as one day.

¹Length of stay is calculated according to release date for those who are released.

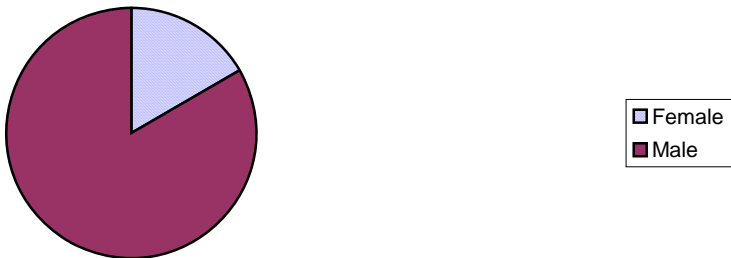
²For those still in custody, length of stay is calculated at the last day of the month.

Section III

Demographics

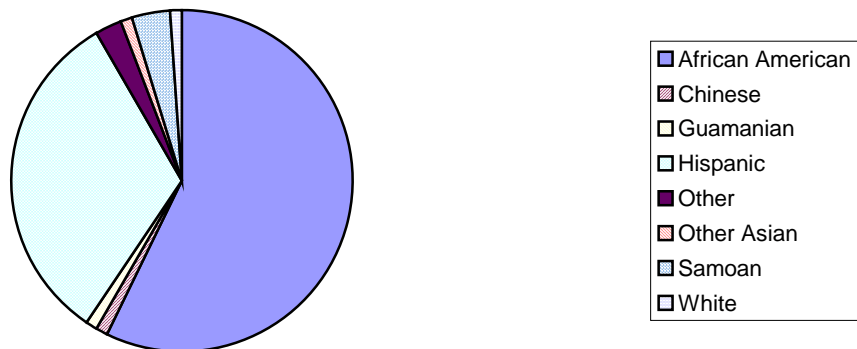
Gender	Frequency	Percent
Female	14	16.67%
Male	70	83.33%
Total	84	100.00%

**Demographic Characteristics
Of Juvenile Hall Detainees on 8/31/11 by Gender**

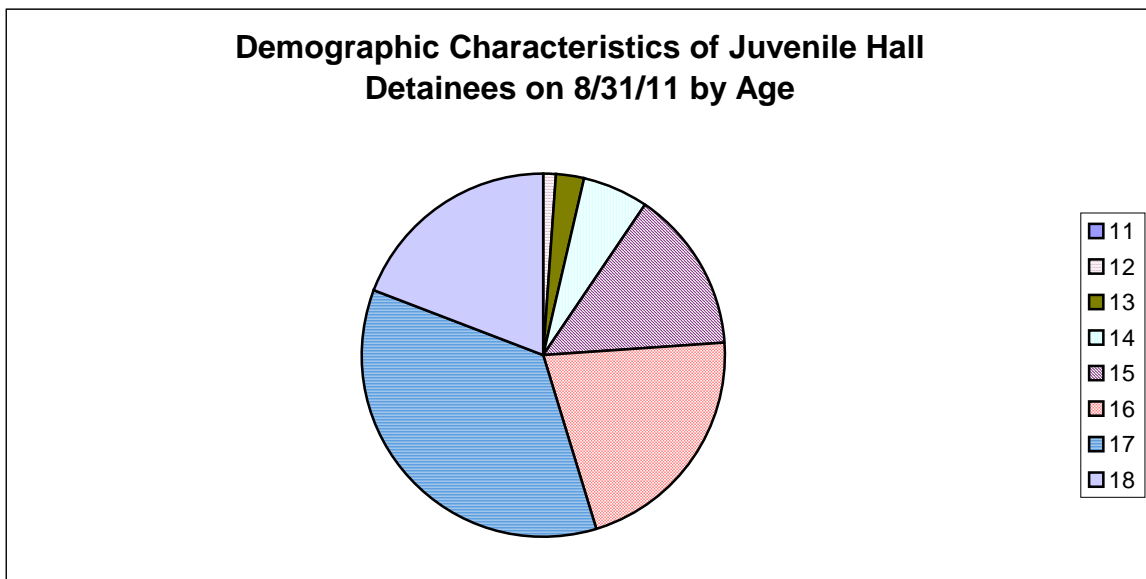


Race/Ethnic Origin	Frequency	Percent
African American	48	57.14%
Chinese	1	1.19%
Guamanian	1	1.19%
Hispanic	27	32.14%
Other	2	2.38%
Other Asian	1	1.19%
Samoan	3	3.57%
White	1	1.19%
Total	84	100.00%

**Demographic Characteristics of Juvenile Hall Detainees on
8/31/11 by Race**

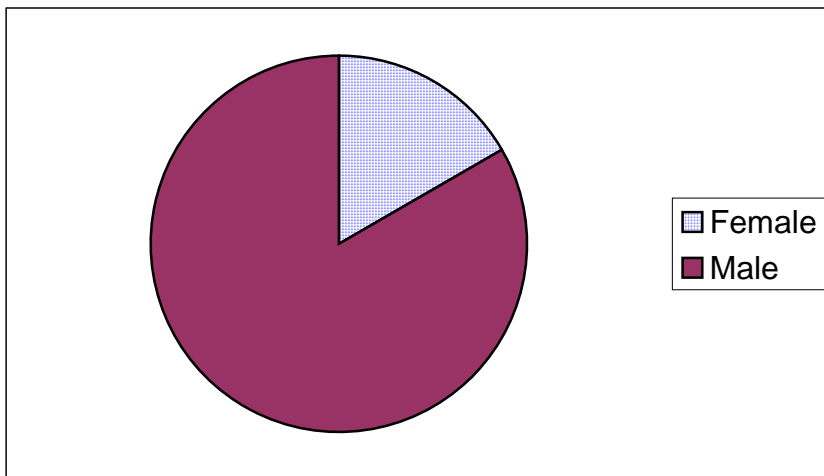


Age	Frequency	Percent
11	0	0.00%
12	1	1.19%
13	2	2.38%
14	5	5.95%
15	12	14.29%
16	18	21.43%
17	30	35.71%
18	16	19.05%
Total	84	100.00%



Demographic Characteristics of Juvenile Hall Detainees
on 8/31/2011
Age by Gender

Age	Female	Male	Total	
11	0	0	0	0.00%
12	0	1	1	1.19%
13	0	2	2	2.38%
14	2	3	5	5.95%
15	3	9	12	14.29%
16	3	15	18	21.43%
17	5	25	30	35.71%
18 and over	1	15	16	19.05%
Total	14	70	84	100.00%
	16.67%	83.33%	100.00%	



Demographic Characteristics
Of Juvenile Hall Detainees on August 31st, 2011

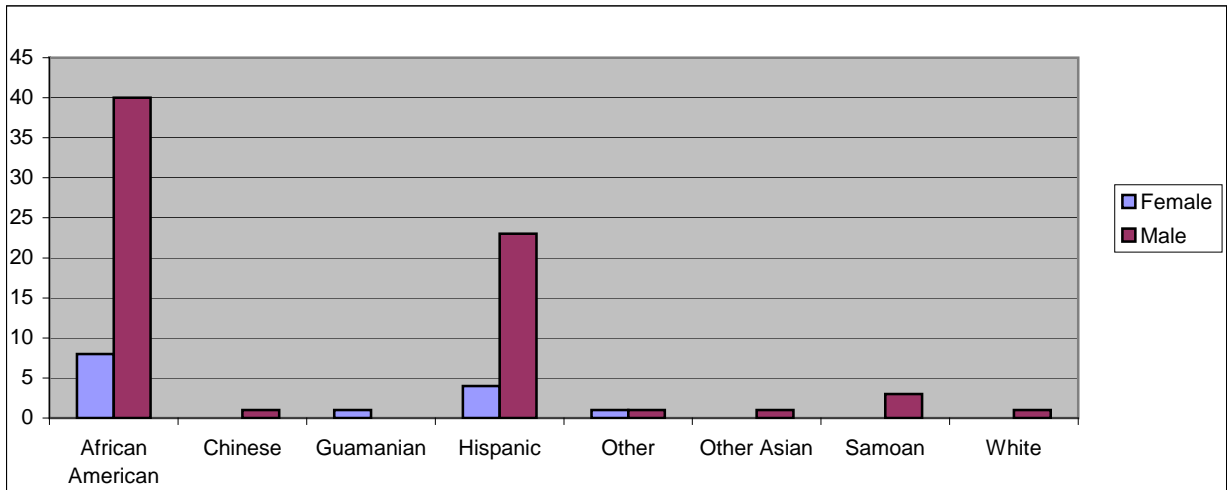
Geographic Residence of Youth	Count	%
Richmond	0	0.0%
Marina	0	0.0%
North of Market/Downtown	1	1.2%
Treasure Island/Yerba Buena Island	2	2.4%
Western Addition	8	9.5%
South of Market/Tenderloin	3	3.6%
Sunset	0	0.0%
Haight Ashbury/Castro/Upper Market	0	0.0%
Inner Mission	6	7.1%
Potrero	4	4.8%
Parkside	0	0.0%
Ingleside (West of Twin Peaks)	8	9.5%
Outer Mission	13	15.5%
Bayview	19	22.6%
Non-San Francisco and Unavailable	20	23.8%
Total	84	100.0%

Non-San Francisco and Unavailable	Count	%
Antioch	1	5.0%
Marin City	1	5.0%
Pittsburg	1	5.0%
Richmond	4	20.0%
San Leandro	1	5.0%
Springfield	1	5.0%
Suisan	1	5.0%
Vacaville	1	5.0%
Woodland	1	5.0%
Unavailable	8	40.0%
Total	20	100.0%

Demographic Characteristics
Of Juvenile Hall Detainees on August 31st, 2011

Race/Ethnic Origin by Gender

Race/Ethnicity	Female	Male	Total	%
African American	8	40	48	57.1%
Chinese	0	1	1	1.2%
Guamanian	1	0	1	1.2%
Hispanic	4	23	27	32.1%
Other	1	1	2	2.4%
Other Asian	0	1	1	1.2%
Samoan	0	3	3	3.6%
White	0	1	1	1.2%
Total	14	70	84	100.0%

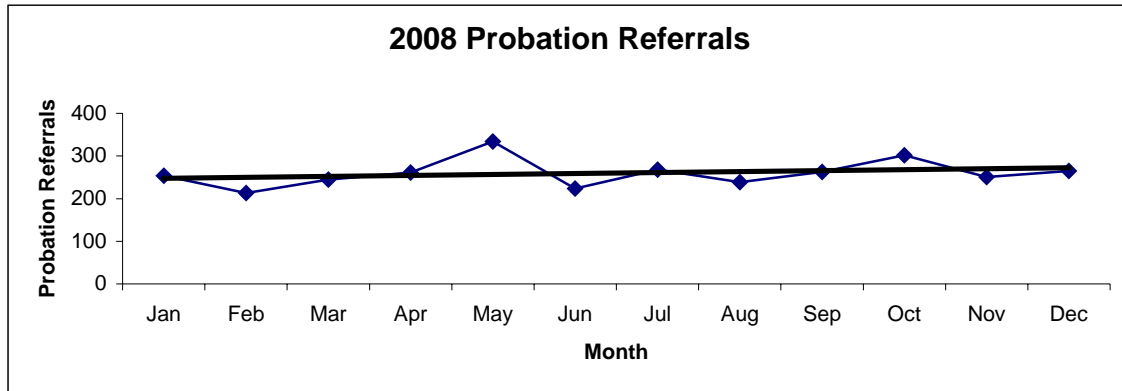


Section IV

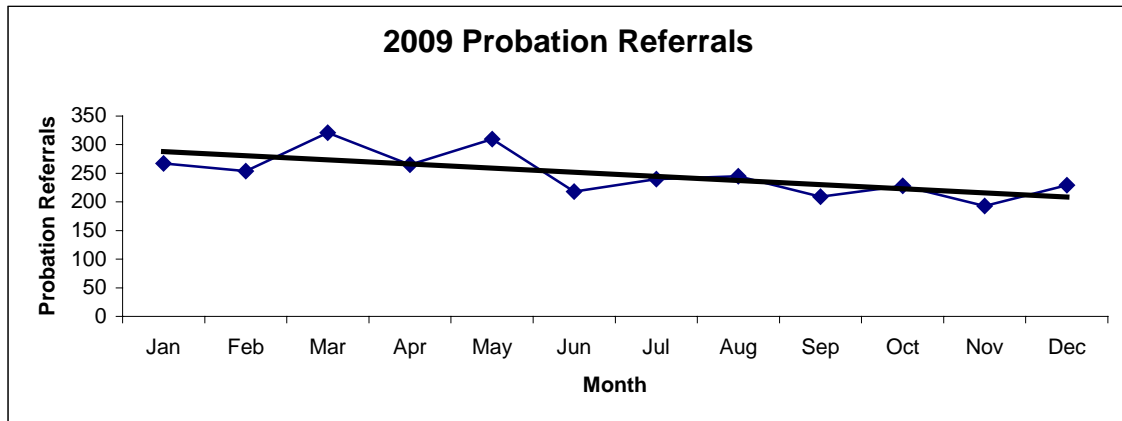
Historical Information

San Francisco Juvenile Probation Department
Probation Referrals (all sources) By Month
 (2008-2010)

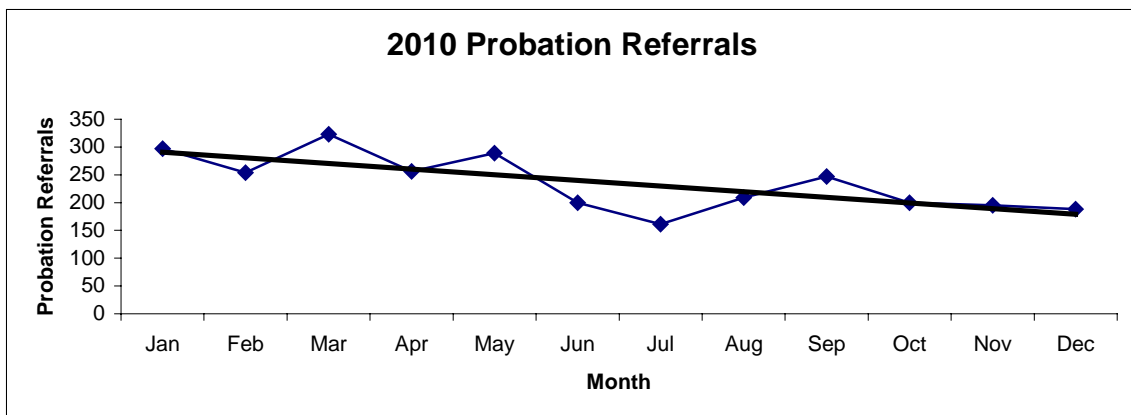
2008 Probation Referrals	Jan	Feb	Mar	Apr	May	Jun	Jul	Aug	Sep	Oct	Nov	Dec	Total
	254	213	245	261	334	224	268	239	263	302	251	265	3119



2009 Probation Referrals	Jan	Feb	Mar	Apr	May	Jun	Jul	Aug	Sep	Oct	Nov	Dec	Total
	267	254	321	265	310	218	240	245	209	228	193	229	2979

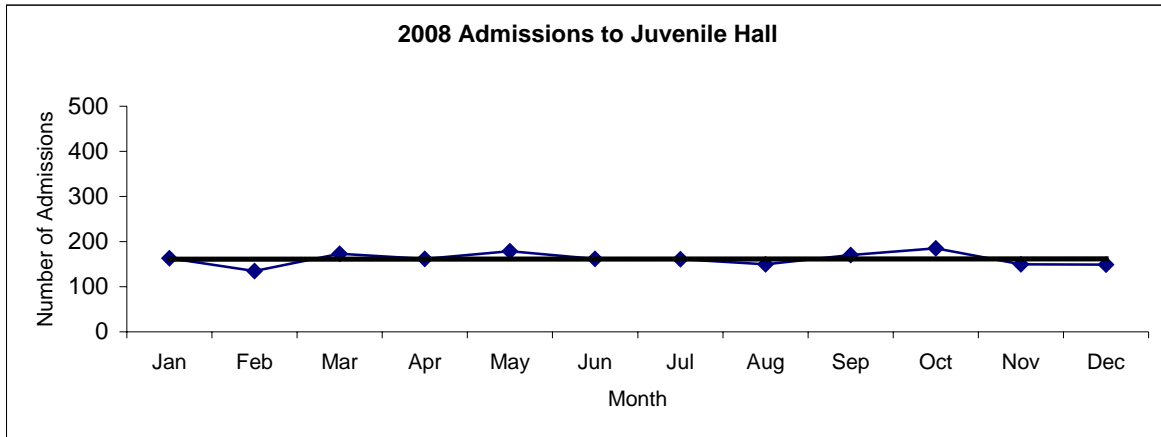


2010 Probation Referrals	Jan	Feb	Mar	Apr	May	Jun	Jul	Aug	Sep	Oct	Nov	Dec	Total
	297	254	323	256	289	200	161	209	247	200	195	188	2819

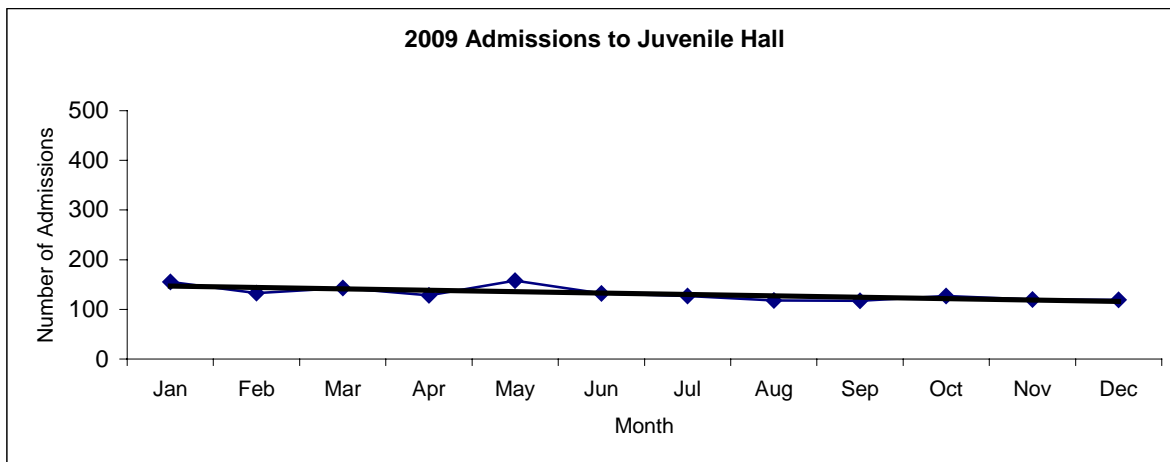


San Francisco Juvenile Probation
Juvenile Hall Admissions By Month
(2008-2010)

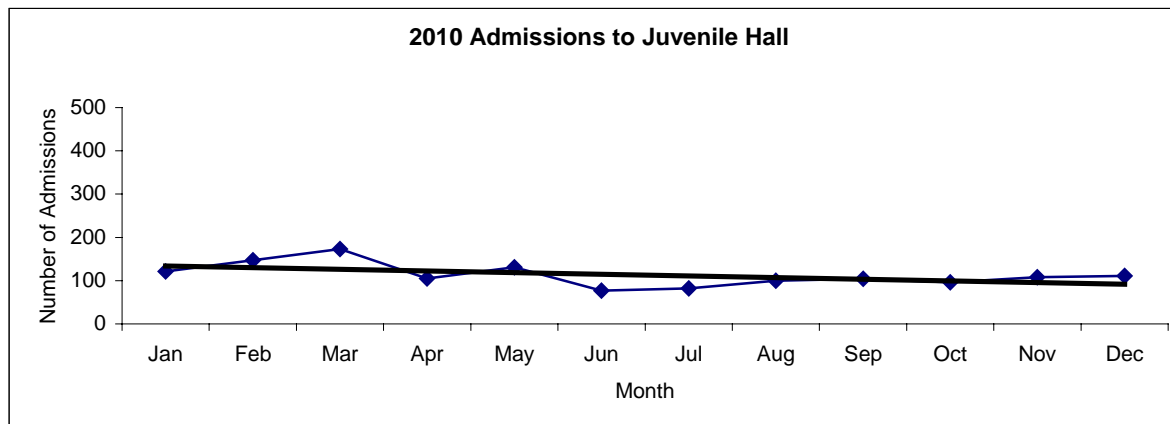
2008 Admissions	Jan	Feb	Mar	Apr	May	Jun	Jul	Aug	Sep	Oct	Nov	Dec	Total
	163	135	173	162	179	162	161	150	170	185	150	149	1939



2009 Admissions	Jan	Feb	Mar	Apr	May	Jun	Jul	Aug	Sep	Oct	Nov	Dec	Total
	155	133	143	128	158	132	127	118	117	127	120	119	1577

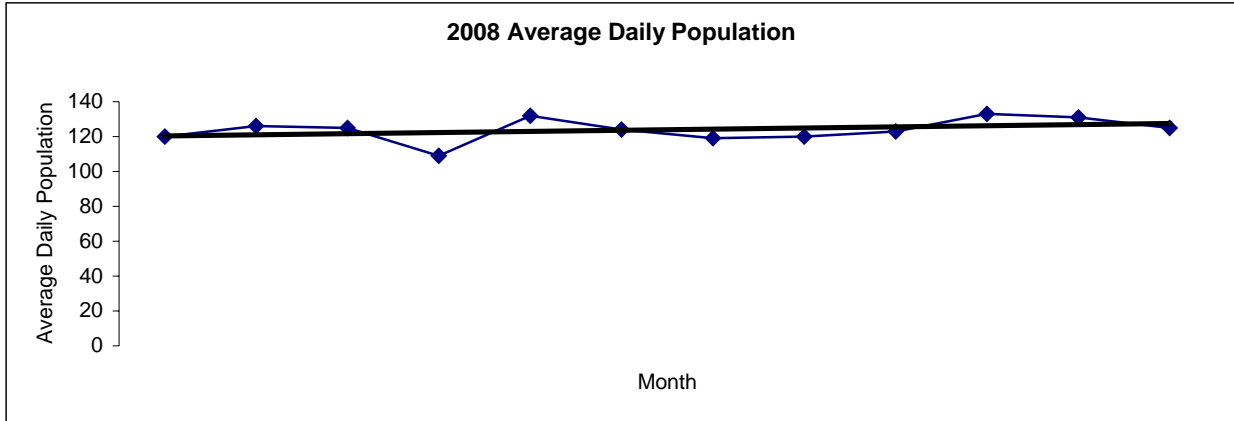


2010 Admissions	Jan	Feb	Mar	Apr	May	Jun	Jul	Aug	Sep	Oct	Nov	Dec	Total
	121	147	173	105	131	77	82	100	104	96	108	111	1355

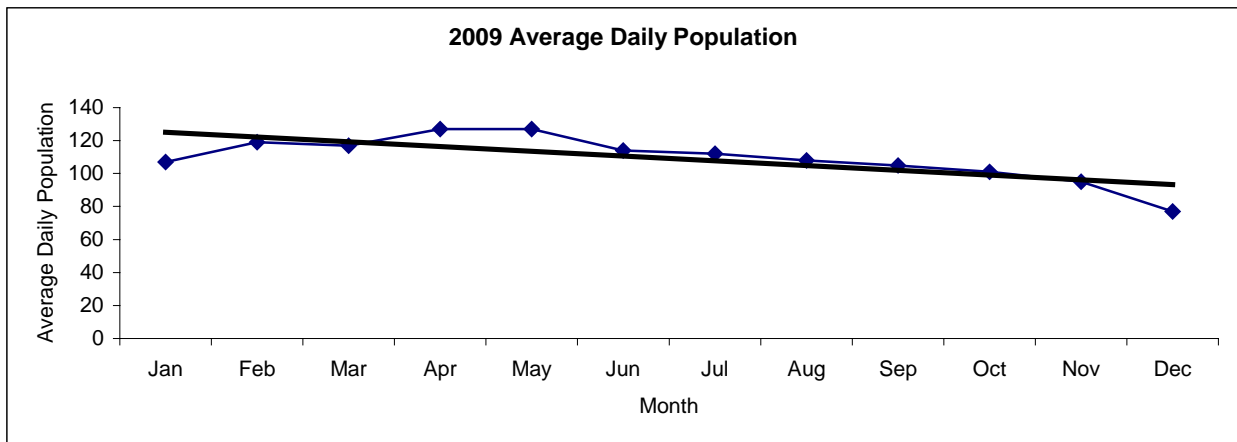


San Francisco Juvenile Probation
Juvenile Hall Average Daily Population By Month
 (2008-2010)

2008 Avg. Daily Pop.	Jan	Feb	Mar	Apr	May	Jun	Jul	Aug	Sep	Oct	Nov	Dec	Total
	120	126	125	109	132	124	119	120	123	133	131	125	124



2009 Avg. Daily Pop.	Jan	Feb	Mar	Apr	May	Jun	Jul	Aug	Sep	Oct	Nov	Dec	Total
	107	119	117	127	127	114	112	108	105	101	95	77	109



2010 Avg. Daily Pop.	Jan	Feb	Mar	Apr	May	Jun	Jul	Aug	Sep	Oct	Nov	Dec	Total
	85	104	110	107	99	97	90	88	90	84	79	92	94

