

# City and County of San Francisco



Juvenile Probation Department

---

## **Monthly Report for September 2011**

Presented to the Juvenile Probation Commission

October 11<sup>th</sup>, 2011

William P. Siffermann  
Chief Probation Officer

Prepared by Jose Luis Perla  
Information Technology Director  
(415) 753-7686  
[jose.perla@sfgov.org](mailto:jose.perla@sfgov.org)

# Table of Contents

---

## Section I Summary Reports

Juvenile Hall, Log Cabin Ranch Summary Statistics .....	1
Probation Services Summary and California Youth Authority Statistics .....	2
Active Cases by Units .....	3

## Section II Current Month General Detail

Probation Referrals, Juvenile Admissions And Average Daily Population .....	4
Juvenile Hall Admissions and Average Daily Population .....	5
Commitments to out-of-home placement .....	6
Commitments to California Youth Authority .....	7
Log Cabin Ranch Admissions and Average Daily Population .....	8
Probation Referrals .....	9
Juvenile Hall And Log Cabin Ranch Incident Report .....	10
Bay Area Resident Juvenile Hall Comparison .....	11
Juvenile Hall Admissions .....	12
Juvenile Hall Detainees by Detention Reason .....	13
Juvenile Hall Average Daily Population by Rated Capacity .....	14
Juvenile Hall Average Length of Stay .....	15

## Section III Demographics

Juvenile Hall Detainees by Sex and Race/Ethnic Origin .....	16
Juvenile Hall Detainees by Age .....	17
Juvenile Hall Detainees by Age and Sex .....	18
Juvenile Hall Detainees by Geographic Residence of Youth .....	19
Juvenile Hall Detainees by Race/Ethnic Origin and Sex .....	20

## **Section IV**

### **Historical Information**

2008-2010 Probation Referrals .....	21
2008-2010 Juvenile Hall Admissions .....	22
2008-2010 Juvenile Hall Average Daily Population .....	23

---

# **Section I**

## **Summary Reports**

## Summary Report for the Month of September 2011

<b>Juvenile Hall</b>	<i>August 2010</i>	<i>August 2011</i>	<i>September 2010</i>	<i>September 2011</i>	<i>YTD 2010</i>	<i>YTD 2011</i>
Admissions	100	95	104	109	1040	908
Average Daily Population	88	82	90	95	96	88
Average Length of Stay (Releases)	38.86	19.83	18.16	57.85	24.85	30.37
Average Length of Stay (In Custody)	55.63	55.90	63.09	46.50	58.48	52.85
Releases	99	105	104	92	1024	894
<b>Log Cabin Ranch</b>						
Admissions:						
First Time Commitments	4	4	5	1	22	18
Recommitments	0	0	0	1	0	1
<i>Total</i>	<b>4</b>	<b>4</b>	<b>5</b>	<b>2</b>	<b>22</b>	<b>19</b>
Releases:						
Graduated	2	6	1	1	12	14
Escape	2	0	0	0	4	0
Other releases	1	0	1	3	5	11
<i>Total</i>	<b>5</b>	<b>6</b>	<b>2</b>	<b>4</b>	<b>21</b>	<b>25</b>
Average Daily Population	14	20	16	17	13	20

## Summary Report for the Month of September 2011

<b>Probation Services</b>	<i>August 2011</i>	<i>September 2011</i>	<i>Year To Date 2011</i>
Probation Referrals	166	186	1607
Total Petitions including violation of probation	89	85	867
Selected Court Dispositions:			
California Youth Authority	0	1	1
Log Cabin Ranch	4	2	20
Out of Home Placement	12	14	116
Ward Probation	40	28	277
Non-Ward Probation (725a WI)	3	1	23
Informal Probation (654 WI)	10	9	107
Violation of Probation Petitions Filed	19	18	119
<b>California Youth Authority Monthly Count</b> <b>San Francisco County Juvenile Court Cases</b> September 30 <sup>th</sup> , 2011			
Category	Institutions	Parole	
<b>Males</b>			
White	0	1	
Hispanic	0	0	
African American	5	2	
Asian	0	0	
Native American	0	0	
Filipino	0	0	
Pacific Islander	0	1	
Other	0	0	
<b>Total</b>	<b>5</b>	<b>4</b>	
<b>Females</b>			
White	0	0	
Hispanic	0	0	
African American	0	0	
Asian	0	0	
Native American	0	0	
Filipino	0	0	
Pacific Islander	0	0	
Other	0	0	
<b>Total</b>	<b>0</b>	<b>0</b>	
<b>Grand Total</b>	<b>5</b>	<b>4</b>	

## Summary Report for the Month of September 2011

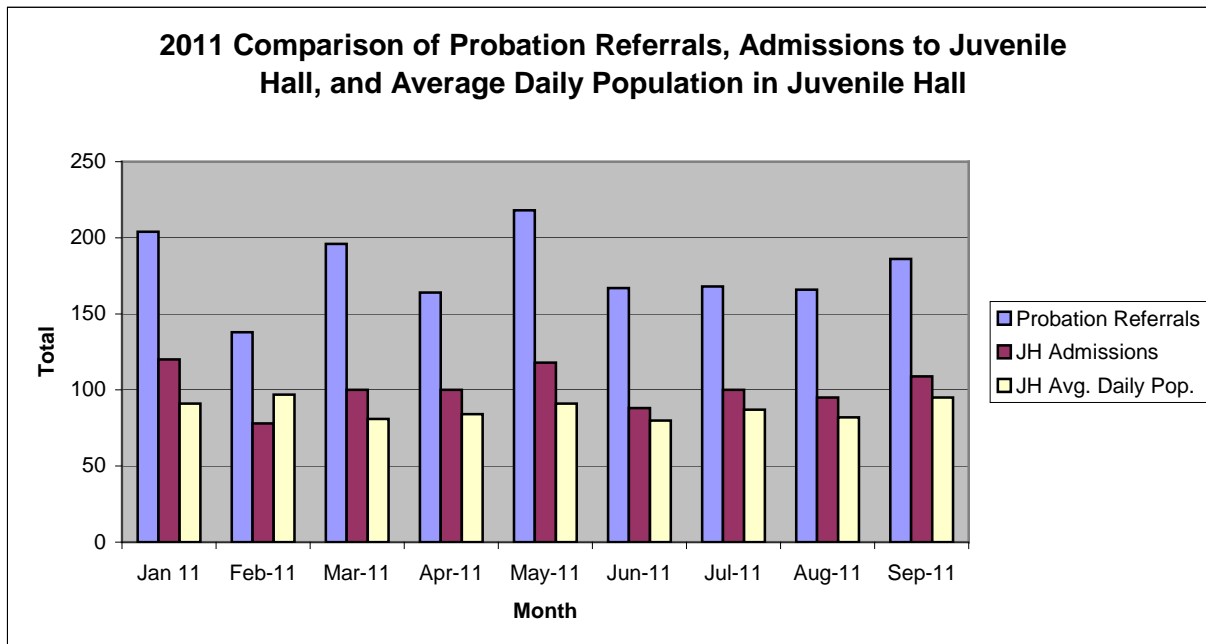
<b>Probation Services</b>			
<b>Active Cases by Units</b>	August 2011	September 2011	September Average # Youth by PO
CARC	190	200	200
Intake Green (Custody Screening Investigation)	94	97	12
Intake Gold (Probation Services 1)	149	150	21
FITS (Probation Services 2)	191	184	18
Serious Offenders (Probation Services 3)	216	208	20
Private Placement (Probation Services 4)	180	181	22
Special Services	6	6	1
<i>Total</i>	<b>1,026</b>	<b>1,026</b>	<b>42</b>
Total Active Intake Cases	445	460	
Total Probation/Supervision Cases	581	566	

**Section II**  
**Current Month**  
**General Detail**



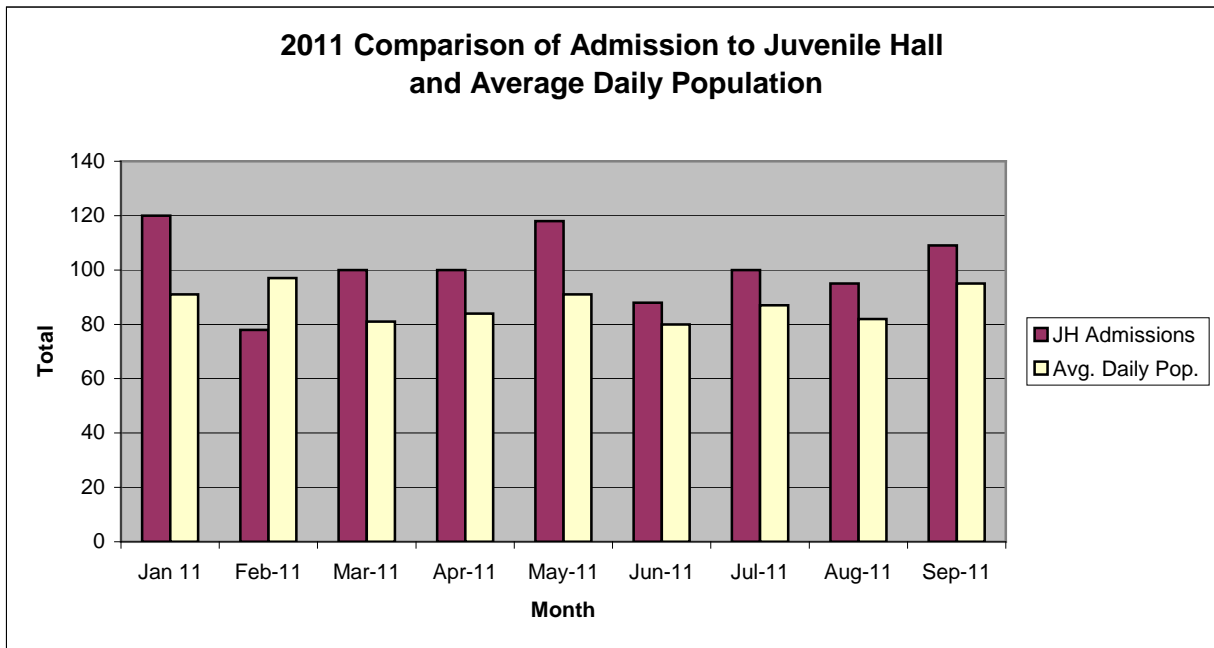
## San Francisco Juvenile Probation Department

	Jan 11	Feb-11	Mar-11	Apr-11	May-11	Jun-11	Jul-11	Aug-11	Sep-11	Oct-11	Nov-11	Dec-11
Probation Referrals	204	138	196	164	218	167	168	166	186			
JH Admissions	120	78	100	100	118	88	100	95	109			
JH Avg. Daily Pop.	91	97	81	84	91	80	87	82	95			



## San Francisco Juvenile Probation Department

	Jan 11	Feb-11	Mar-11	Apr-11	May-11	Jun-11	Jul-11	Aug-11	Sep-11	Oct-11	Nov-11	Dec-11
JH Admissions	120	78	100	100	118	88	100	95	109			
Avg. Daily Pop.	91	97	81	84	91	80	87	82	95			

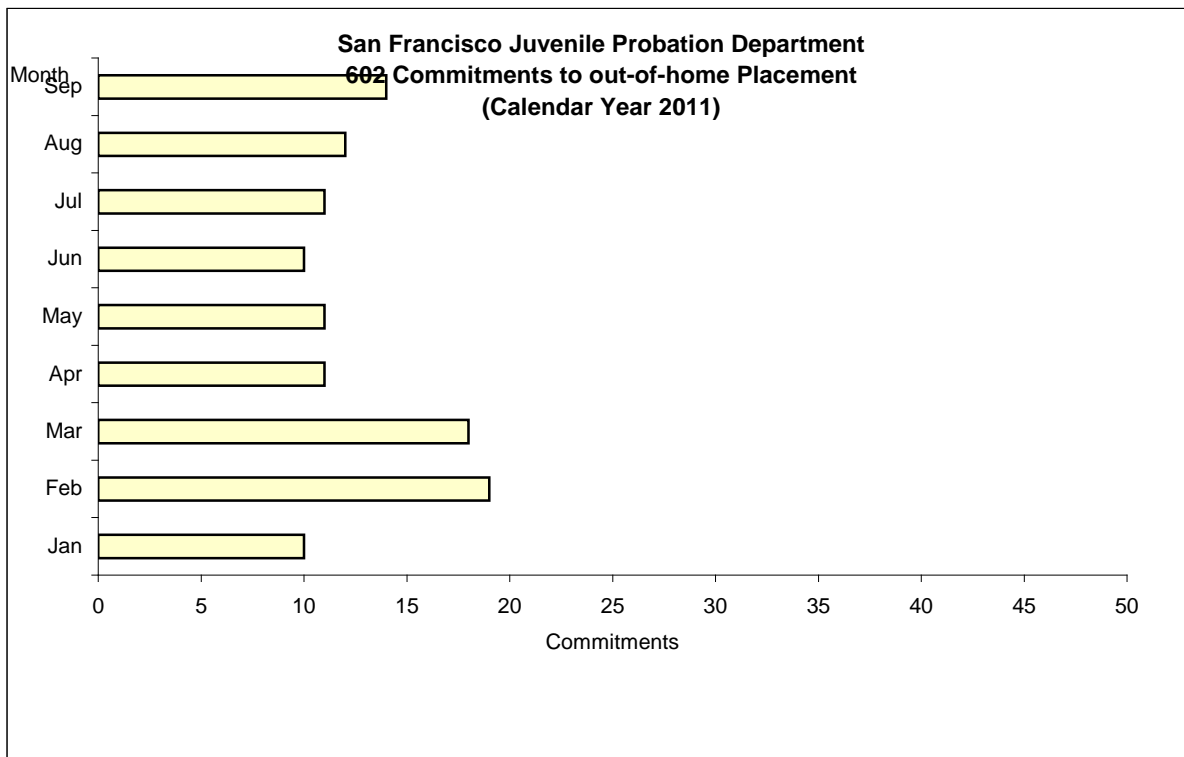


# Out-of-Home Placement<sup>1</sup>

## Commitments of 602's

### Calendar Year 2011

<b>Commitments</b>	<b>Jan</b>	<b>Feb</b>	<b>Mar</b>	<b>Apr</b>	<b>May</b>	<b>Jun</b>	<b>Jul</b>	<b>Aug</b>	<b>Sep</b>	<b>Oct</b>	<b>Nov</b>	<b>Dec</b>	<b>Total</b>
2011	10	19	18	11	11	10	11	12	14				<b>116</b>



<sup>1</sup> This report is based on 602 Commitments to out-of-home placements. If there is a 601 commitment, it will show as a footnote here. Figures are regularly updated to include reports from previous reporting periods.

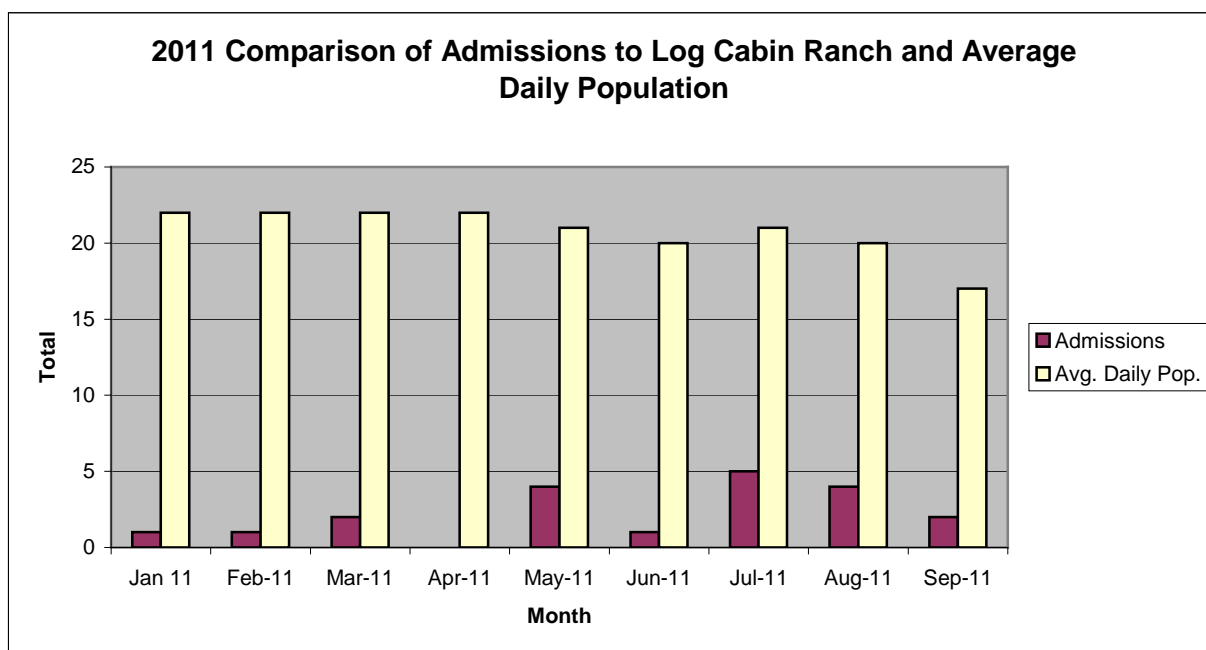
# California Youth Authority Commitments (Calendar Year 2011)

Commitments	Jan	Feb	Mar	Apr	May	Jun	Jul	Aug	Sep	Oct	Nov	Dec	Total
2011	0	0	0	0	0	0	0	0	1				1



## San Francisco Juvenile Probation Department

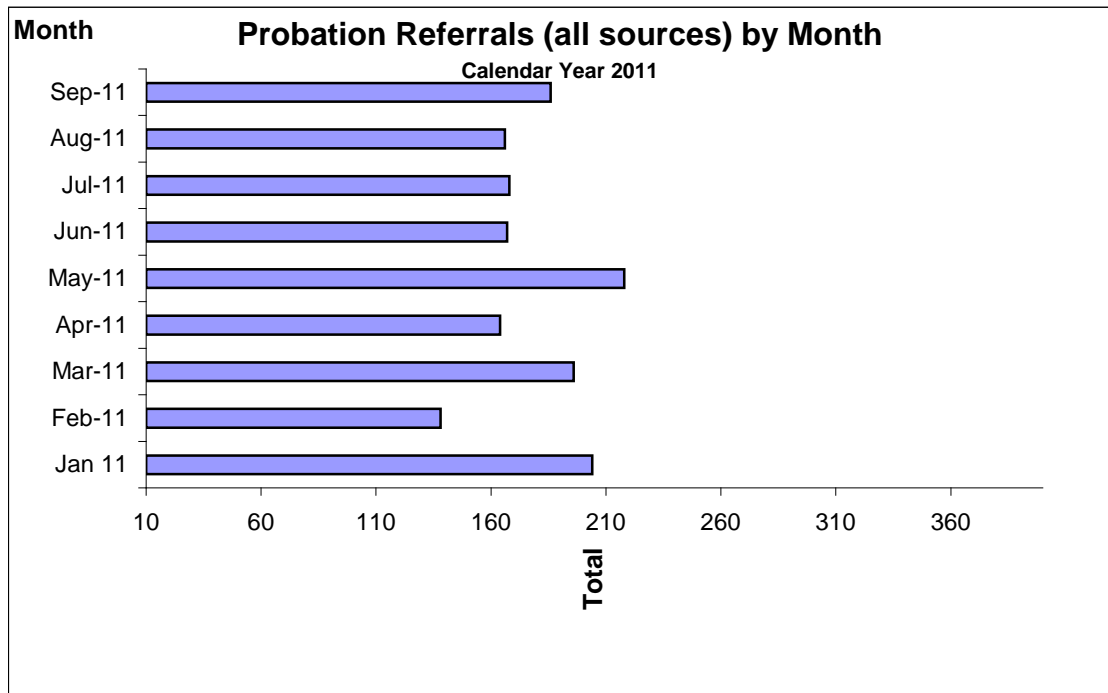
	Jan 11	Feb-11	Mar-11	Apr-11	May-11	Jun-11	Jul-11	Aug-11	Sep-11	Oct-11	Nov-11	Dec-11
Admissions	1	1	2	0	4	1	5	4	2			
Avg. Daily Pop.	22	22	22	22	21	20	21	20	17			



## Probation Referrals by Month Calendar Year 2011

### Probation Referrals (all sources) by Month (602 W&I)

Jan 11	204
Feb-11	138
Mar-11	196
Apr-11	164
May-11	218
Jun-11	167
Jul-11	168
Aug-11	166
Sep-11	186
Oct-11	
Nov-11	
Dec-11	

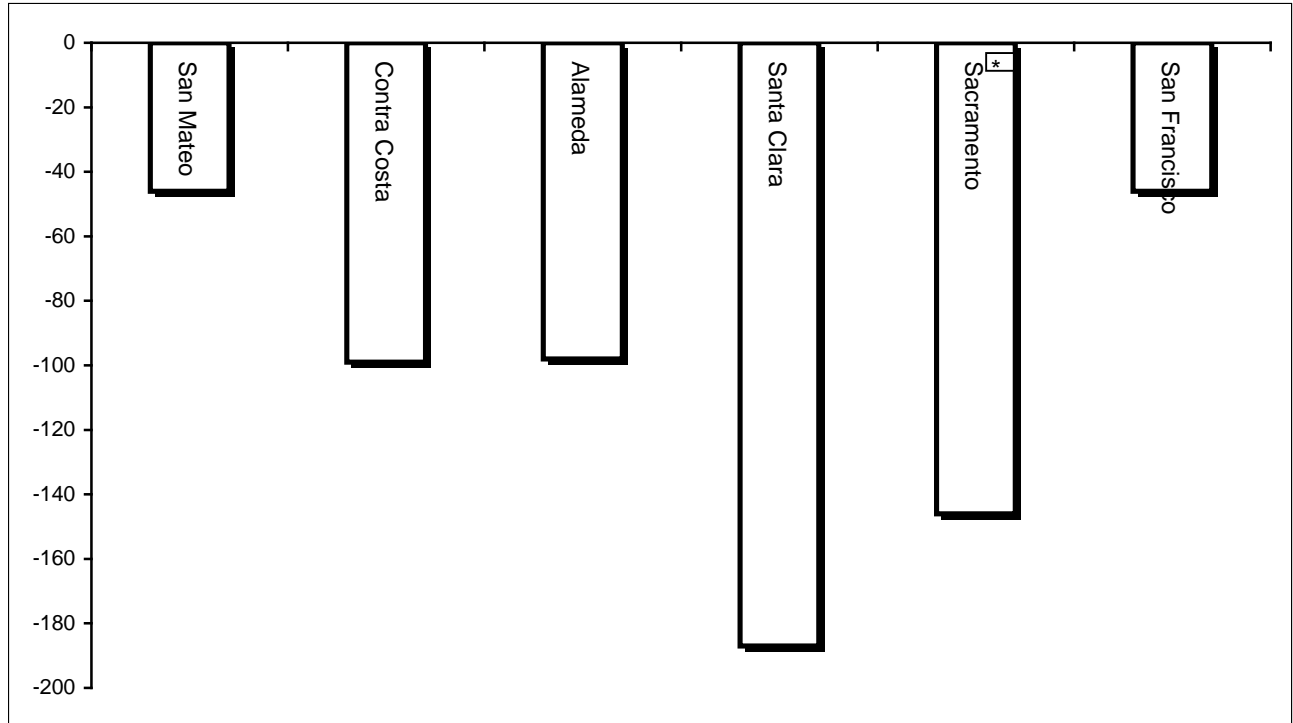


San Francisco Juvenile Probation Department  
Monthly Incident Report Form  
September 2011

<b>Juvenile Hall</b>	Assault on Staff	Fight	Attempted Escape	Fire	Attempted Suicide	Serious Contraband (Weapon illegal drug)	Use of Restraints	Self-Inflicted Injury	Assault on Staff with Injury	Battery Youth on Youth
	<b>0</b>	<b>0</b>	<b>0</b>	<b>0</b>	<b>1</b>		<b>0</b>	<b>0</b>	<b>1</b>	<b>10</b>
	Escape	Death	Suicide	Property Damage	Use of Force	Contraband				
	<b>0</b>	<b>0</b>	<b>0</b>	<b>0</b>	<b>1</b>	<b>0</b>				
<b>Log Cabin Ranch</b>	Battery on Staff	Injury to Staff due to Restraint of Minor	Fight	Battery Youth on Youth	Attempted Escape	AWOL	Attempted Suicide	Serious Contraband	Battery on Staff with Injury	Fire
	<b>0</b>	<b>0</b>	<b>2</b>	<b>2</b>	<b>0</b>	<b>0</b>	<b>0</b>	<b>0</b>	<b>0</b>	<b>0</b>
	Fight With Injury	Battery Youth on Youth with Injury	Escape	Death	Suicide	Major Property Destruction				
	<b>0</b>	<b>0</b>	<b>0</b>	<b>0</b>	<b>0</b>	<b>0</b>				

# Bay Area Resident Juvenile Hall Comparison Over/Under Capacity

on October 6<sup>th</sup>, 2011

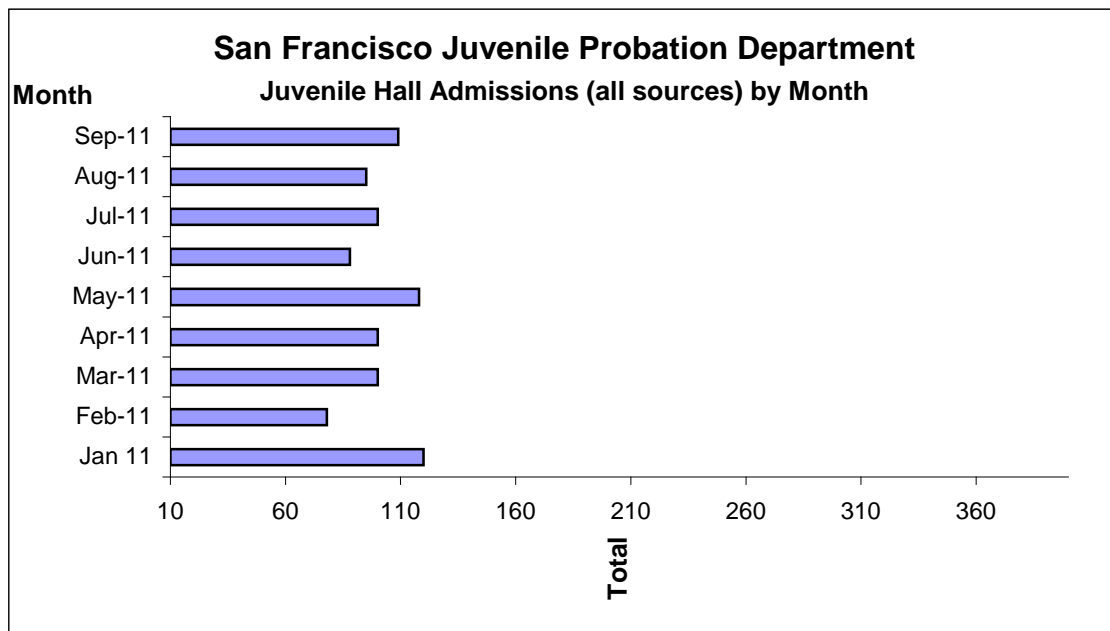


	Rated Capacity	Actual	Over/Under Capacity
San Mateo	180	134	-46
Contra Costa	240	141	-99
Alameda	280	182	-98
Santa Clara	360	173	-187
Sacramento	308	162	-146
San Francisco	150	104	-46



## Juvenile Hall Admissions by Month Calendar Year 2011

Jan 11	120
Feb-11	78
Mar-11	100
Apr-11	100
May-11	118
Jun-11	88
Jul-11	100
Aug-11	95
Sep-11	109
Oct-11	
Nov-11	
Dec-11	

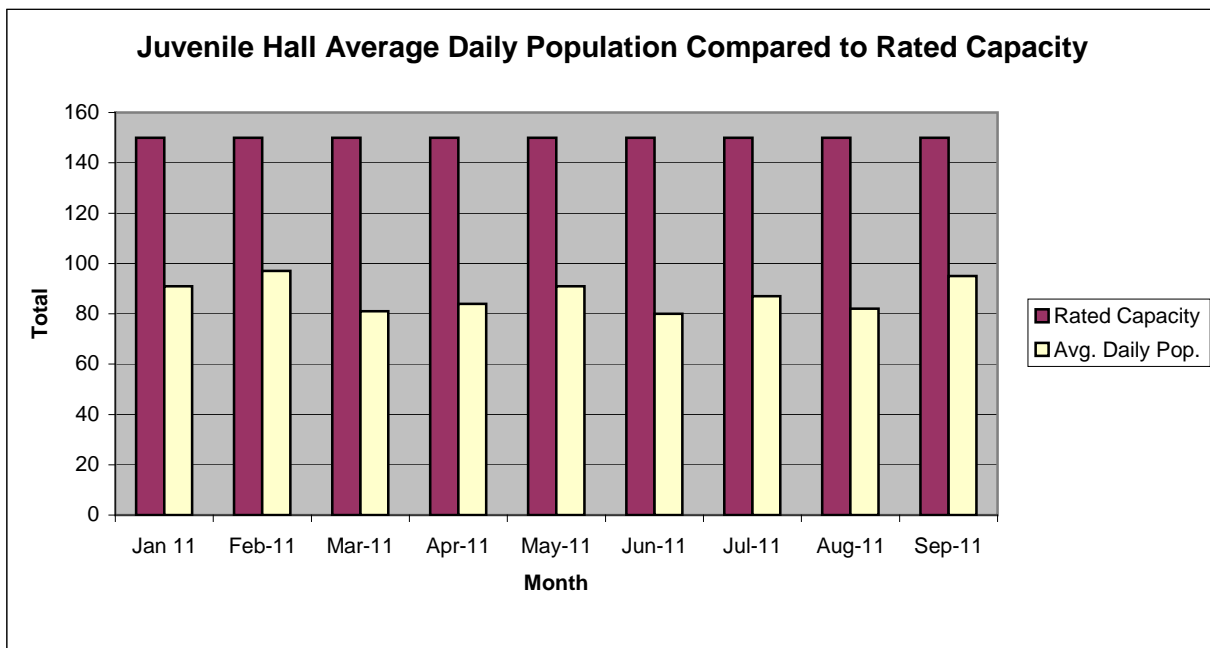


### Characteristics of Juvenile Hall Detainees on September 30th, 2011

Detention Reason	Offense Code	MF*	Count	%
MURDER	187 (A) PC	F	3	2.97%
ATTEMPTED MURDER	664 /187 (A) PC	F	8	7.92%
KIDNAPPING	207 (A) PC	F	3	2.97%
SHOOT AT INHABITED DWELLING/VEHICLE/ETC	246 PC	F	1	0.99%
ROBBERY	211 PC	F	20	19.80%
POSSESS/PURCHASE COCAINE BASE FOR SALE	11351.5 HS	F	1	0.99%
BURGLARY	459 PC	F	3	2.97%
BATTERY BY GASSING OF PO/DETENTION/INVEST/PROSECUTION EMP	243.9(A) PC	F	1	0.99%
ASSAULT:DEADLY WEAPON OR FORCE:POSSIBLE GREAT BODILY INJ	245 (A) PC	F	1	0.99%
FORCE OR ADW NOT FIREARM:GBI LIKELY	245 (A)(1) PC	F	8	7.92%
POSSESS CONTROLLED SUBSTANCE FOR SALE	11378 HS	F	1	0.99%
FELON/ADDICT/ETC POSSESS FIREARM	12021 (A)(1) PC	F	2	1.98%
TAMPER WITH IDENTIFICATION MARKS ON FIREARM	12090 PC	F	1	0.99%
THREATEN CRIME W/INTENT TO TERRORIZE	422 PC	F	1	0.99%
BURGLARY:SECOND DEGREE	459 PC	F	1	0.99%
GRAND THEFT:MONEY/LABOR/PROPERTY OVER \$400	487 (A) PC	F	1	0.99%
RECEIVE/ETC KNOWN STOLEN PROPERTY	496 (A) PC	F	2	1.98%
POSSESS/MANUFACTURE/SELL DANGEROUS WEAPONS/EXPLOSIVES/ETC	12020 (A) PC	F	1	0.99%
CARRY LOADED FIREARM IN PUBLIC UNDER SPECIFIC CIRCUMSTANCES	12031 (A)(1) PC	F	2	1.98%
MINOR ILLEGALLY POSSESS CONCEALED WEAPON WITH PRIOR	12101 (A)(1) PC	F	1	0.99%
VANDALISM (\$400 OR MORE)	594 (B)(1) PC	F	2	1.98%
OBSTRUCT/RESIST/ETC PUBLIC/PEACE OFFICER/EMERGENCY MED TECH	148 (A)(1) PC	M	5	4.95%
BURGLARY	459 PC	M	1	0.99%
VANDALISM:DAMAGE PROPERTY	594 (A)(2) PC	M	1	0.99%
PETTY THEFT	484 (A) PC	M	1	0.99%
MINOR ILLEGALLY POSSESS LIVE AMMUNITION	12101 (B)(1) PC	M	2	1.98%
FAIL TO OBEY ORDER OF JUVENILE COURT 602 WI	777 (A)(2) WI	M	2	1.98%
CHANGE OF PLACEMENT/PLACEMENT FAILURE	737 WI	M	7	6.93%
WARRANT 602	WRNT602	X	10	9.90%
BENCH WARRANT	BENCH WARRANT	X	5	4.95%
COURT ORDER 602	CTORD 602	X	3	2.97%
*F=Felony; M=Misdemeanor		Total	101	100.00%

## San Francisco Juvenile Probation Department

	Jan 11	Feb-11	Mar-11	Apr-11	May-11	Jun-11	Jul-11	Aug-11	Sep-11	Oct-11	Nov-11	Dec-11
Rated Capacity	150	150	150	150	150	150	150	150	150			
Avg. Daily Pop.	91	97	81	84	91	80	87	82	95			



## Juvenile Hall Average Length of Stay

For the Month of September 2011

### <sup>1</sup>Released

<b>Range of Days</b>	<i>1-10 days</i>	<i>11-20 days</i>	<i>21-30 days</i>	<i>30 or more days</i>	<b>Total</b>
# of Youth Released	54	10	9	19	92
% of Population	58.70%	10.87%	9.78%	20.65%	100%
# of Days	92	290	293	4647	5322
% of Total Days	1.73%	5.45%	5.51%	87.32%	100%
Average Length of Stay	1.70	29.00	32.56	244.58	57.85

### <sup>2</sup>In Custody

<b>Range of Days</b>	<i>1-10 days</i>	<i>11-20 days</i>	<i>21-30 days</i>	<i>30 or more days</i>	<b>Total</b>
# of Youth Detained	25	16	11	49	101
% of Population	24.75%	15.84%	10.89%	48.51%	100%
# of Days	88	230	307	4071	4696
% of Total Days	1.87%	4.90%	6.54%	86.69%	100%
Average Length of Stay	3.52	14.38	27.91	83.08	46.50

Notes: Less than one day of stay is calculated as one day.

<sup>1</sup>Length of stay is calculated according to release date for those who are released.

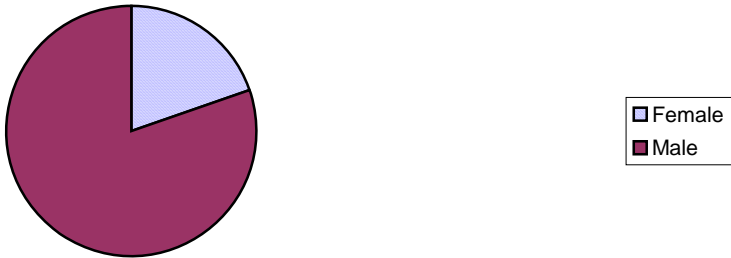
<sup>2</sup>For those still in custody, length of stay is calculated at the last day of the month.

## **Section III**

# **Demographics**

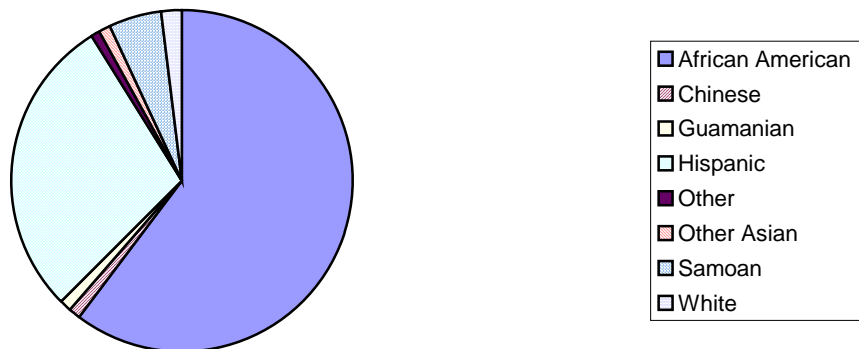
Gender	Frequency	Percent
Female	20	19.80%
Male	81	80.20%
<b>Total</b>	<b>101</b>	<b>100.00%</b>

**Demographic Characteristics  
Of Juvenile Hall Detainees on 9/30/11 by Gender**

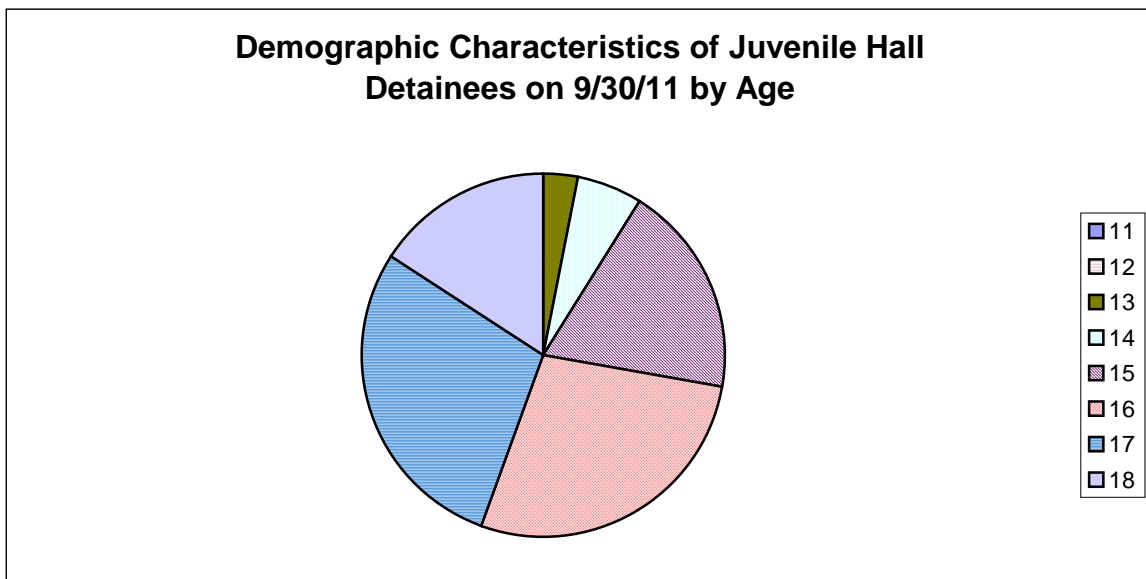


Race/Ethnic Origin	Frequency	Percent
African American	61	60.40%
Chinese	1	0.99%
Guamanian	1	0.99%
Hispanic	29	28.71%
Other	1	0.99%
Other Asian	1	0.99%
Samoan	5	4.95%
White	2	1.98%
<b>Total</b>	<b>101</b>	<b>100.00%</b>

**Demographic Characteristics of Juvenile Hall Detainees on  
9/30/11 by Race**

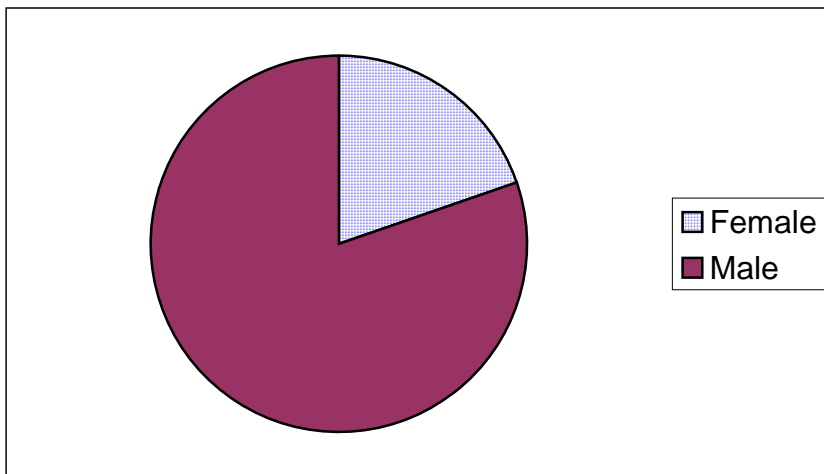


Age	Frequency	Percent
11	0	0.00%
12	0	0.00%
13	3	2.97%
14	6	5.94%
15	19	18.81%
16	28	27.72%
17	29	28.71%
18	16	15.84%
<b>Total</b>	<b>101</b>	<b>100.00%</b>



Demographic Characteristics of Juvenile Hall Detainees  
on 9/30/2011  
Age by Gender

Age	Female	Male	Total	
11	0	0	0	0.00%
12	0	0	0	0.00%
13	1	2	3	2.97%
14	4	2	6	5.94%
15	4	15	19	18.81%
16	6	22	28	27.72%
17	4	25	29	28.71%
18 and over	1	15	16	15.84%
<b>Total</b>	<b>20</b>	<b>81</b>	<b>101</b>	<b>100.00%</b>
	<b>19.80%</b>	<b>80.20%</b>	<b>100.00%</b>	





Demographic Characteristics  
Of Juvenile Hall Detainees on September 30<sup>th</sup>, 2011

---

<b>Geographic Residence of Youth</b>	<b>Count</b>	<b>%</b>
Richmond	1	1.0%
Marina	0	0.0%
North of Market/Downtown	2	2.0%
Treasure Island/Yerba Buena Island	0	0.0%
Western Addition	13	12.9%
South of Market/Tenderloin	2	2.0%
Sunset	1	1.0%
Haight Ashbury/Castro/Upper Market	0	0.0%
Inner Mission	8	7.9%
Potrero	7	6.9%
Parkside	2	2.0%
Ingleside (West of Twin Peaks)	9	8.9%
Outer Mission	16	15.8%
Bayview	22	21.8%
Non-San Francisco and Unavailable	18	17.8%
<b>Total</b>	<b>101</b>	<b>100.0%</b>

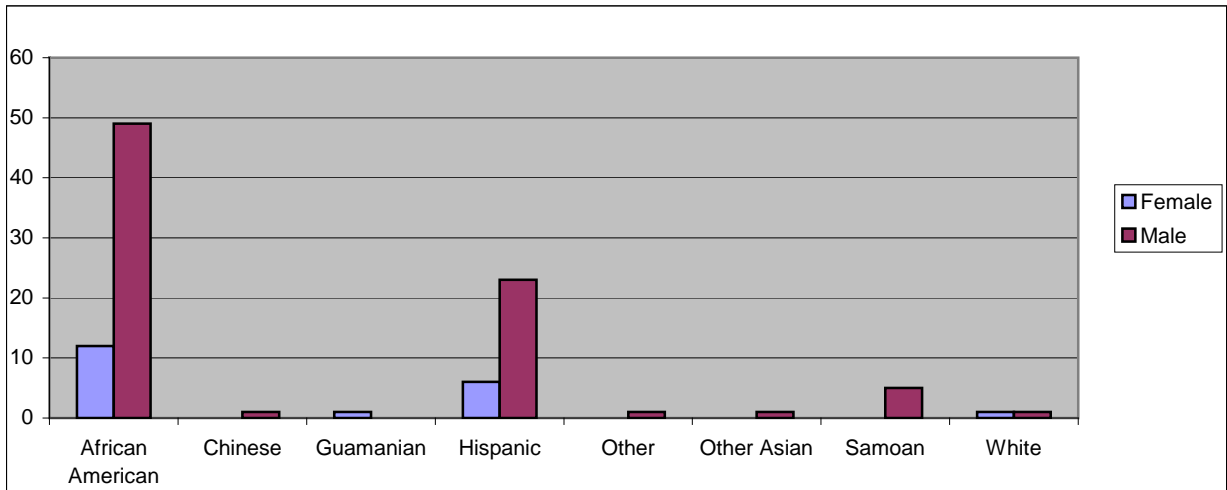
<b>Non-San Francisco and Unavailable</b>	<b>Count</b>	<b>%</b>
Dallas	1	5.6%
Daly City	1	5.6%
Fairfield	1	5.6%
Hayward	2	11.1%
Marin City	1	5.6%
Pittsburg	1	5.6%
Richmond	1	5.6%
San Mateo	1	5.6%
Suisan	1	5.6%
Woodland	1	5.6%
Unavailable	7	38.9%
<b>Total</b>	<b>18</b>	<b>100.0%</b>

Demographic Characteristics  
Of Juvenile Hall Detainees on September 30<sup>th</sup>, 2011

---

**Race/Ethnic Origin by Gender**

Race/Ethnicity	Female	Male	Total	%
African American	12	49	61	60.4%
Chinese	0	1	1	1.0%
Guamanian	1	0	1	1.0%
Hispanic	6	23	29	28.7%
Other	0	1	1	1.0%
Other Asian	0	1	1	1.0%
Samoan	0	5	5	5.0%
White	1	1	2	2.0%
<b>Total</b>	<b>20</b>	<b>81</b>	<b>101</b>	<b>100.0%</b>

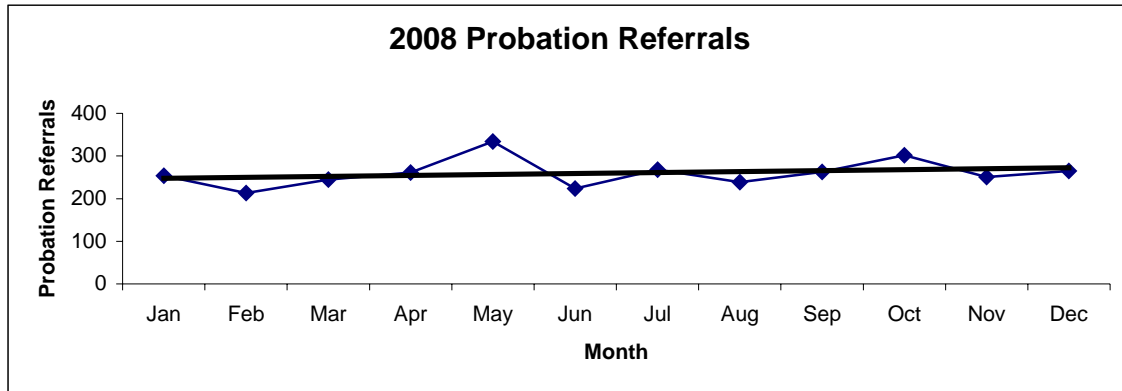


# **Section IV**

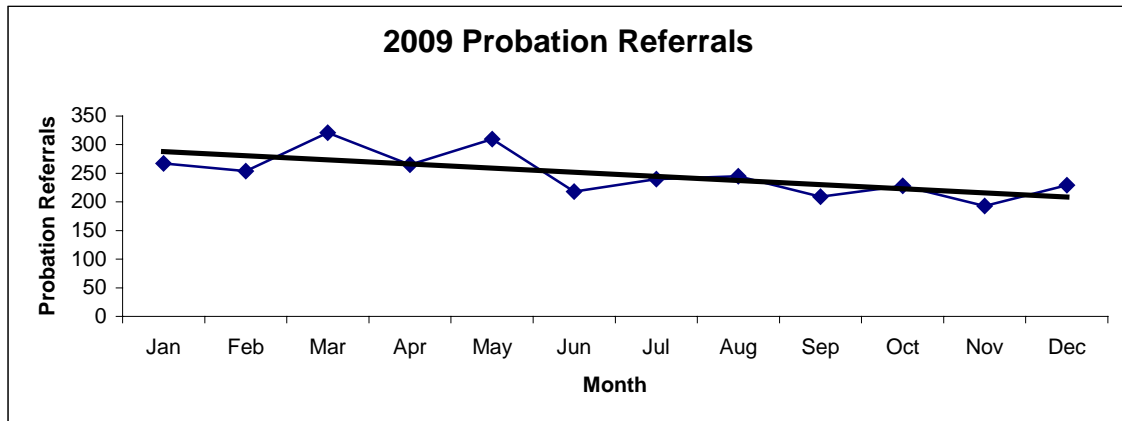
## **Historical Information**

San Francisco Juvenile Probation Department  
**Probation Referrals (all sources) By Month**  
 (2008-2010)

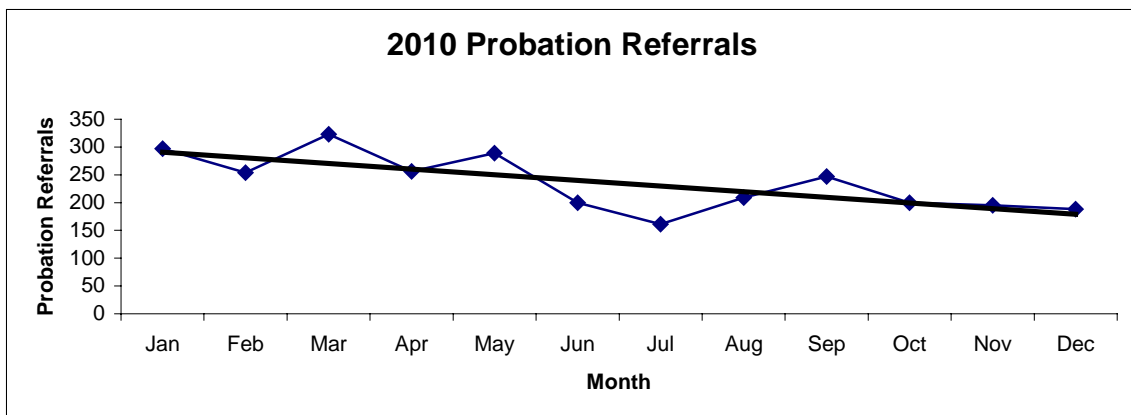
2008 Probation Referrals	Jan	Feb	Mar	Apr	May	Jun	Jul	Aug	Sep	Oct	Nov	Dec	Total
	254	213	245	261	334	224	268	239	263	302	251	265	<b>3119</b>



2009 Probation Referrals	Jan	Feb	Mar	Apr	May	Jun	Jul	Aug	Sep	Oct	Nov	Dec	Total
	267	254	321	265	310	218	240	245	209	228	193	229	<b>2979</b>

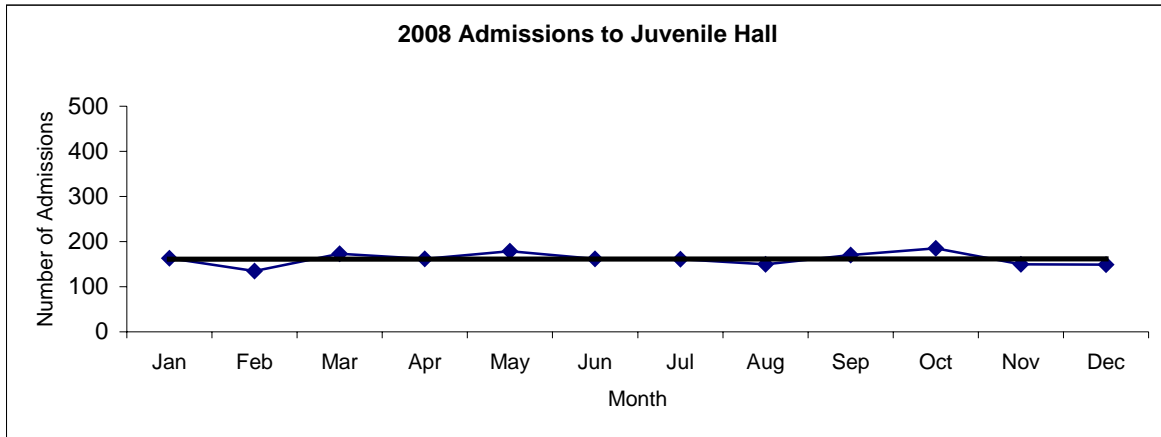


2010 Probation Referrals	Jan	Feb	Mar	Apr	May	Jun	Jul	Aug	Sep	Oct	Nov	Dec	Total
	297	254	323	256	289	200	161	209	247	200	195	188	<b>2819</b>

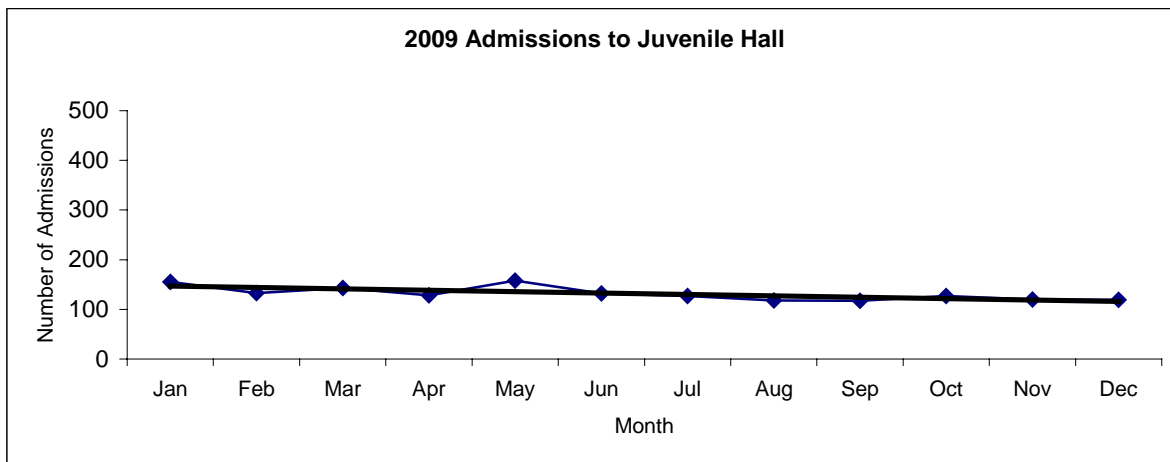


**San Francisco Juvenile Probation**  
**Juvenile Hall Admissions By Month**  
(2008-2010)

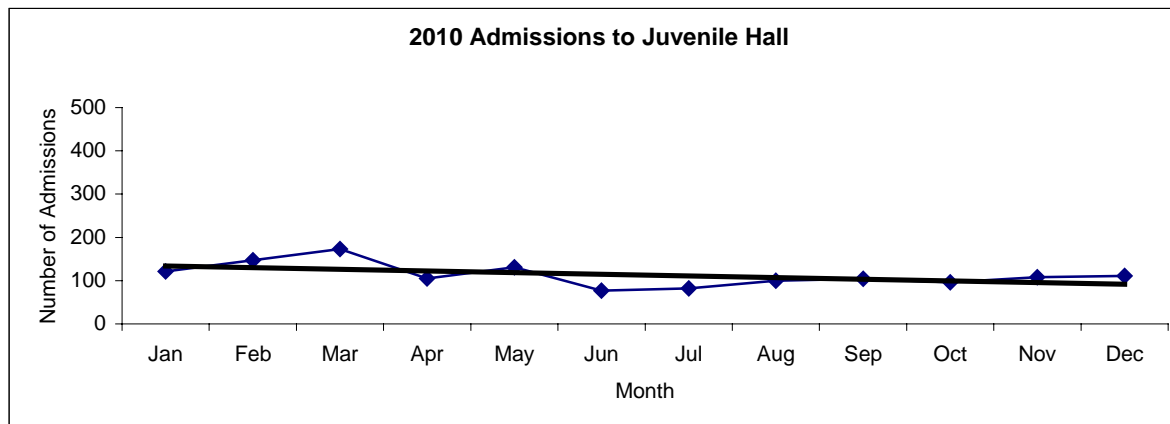
2008 Admissions	Jan	Feb	Mar	Apr	May	Jun	Jul	Aug	Sep	Oct	Nov	Dec	Total
	163	135	173	162	179	162	161	150	170	185	150	149	<b>1939</b>



2009 Admissions	Jan	Feb	Mar	Apr	May	Jun	Jul	Aug	Sep	Oct	Nov	Dec	Total
	155	133	143	128	158	132	127	118	117	127	120	119	<b>1577</b>

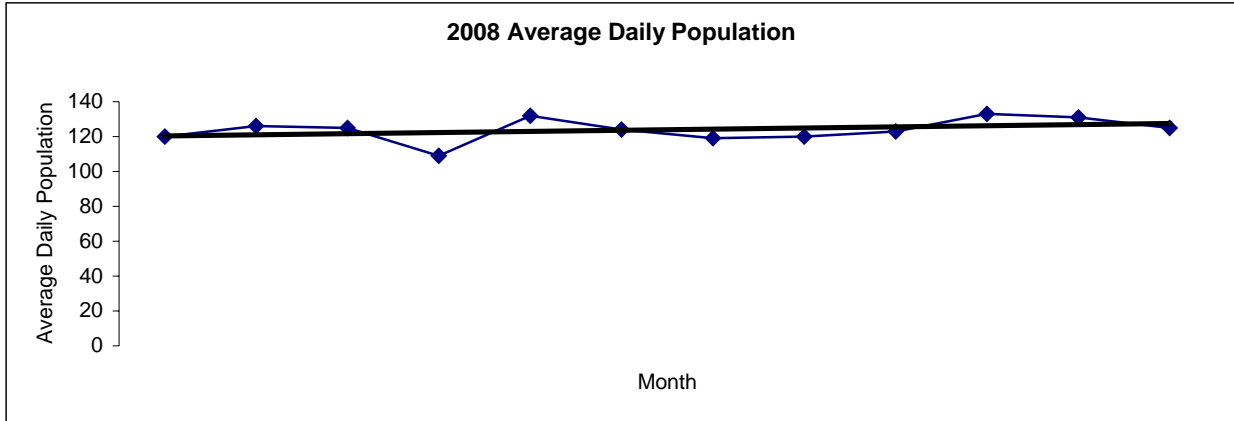


2010 Admissions	Jan	Feb	Mar	Apr	May	Jun	Jul	Aug	Sep	Oct	Nov	Dec	Total
	121	147	173	105	131	77	82	100	104	96	108	111	<b>1355</b>

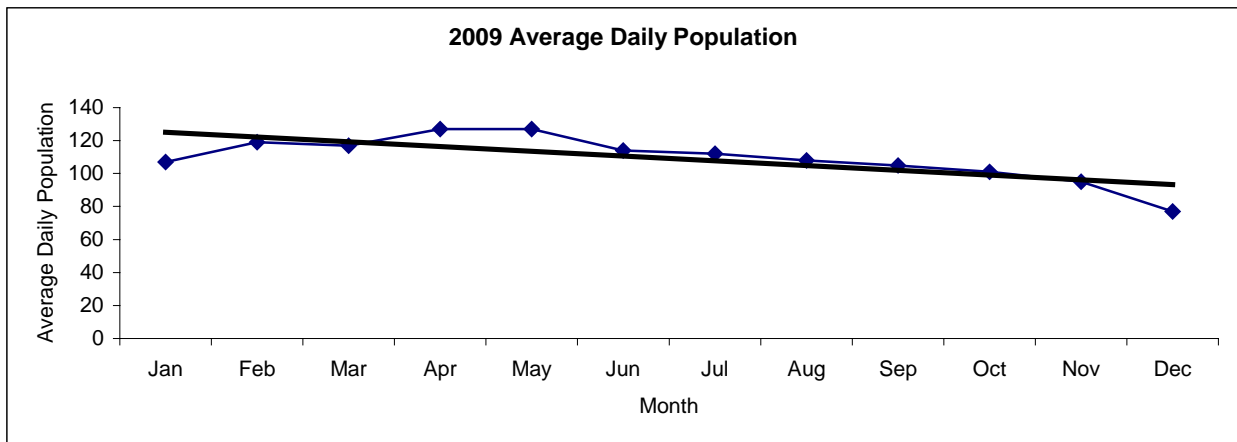


San Francisco Juvenile Probation  
**Juvenile Hall Average Daily Population By Month**  
 (2008-2010)

2008 Avg. Daily Pop.	Jan	Feb	Mar	Apr	May	Jun	Jul	Aug	Sep	Oct	Nov	Dec	Total
	120	126	125	109	132	124	119	120	123	133	131	125	<b>124</b>



2009 Avg. Daily Pop.	Jan	Feb	Mar	Apr	May	Jun	Jul	Aug	Sep	Oct	Nov	Dec	Total
	107	119	117	127	127	114	112	108	105	101	95	77	<b>109</b>



2010 Avg. Daily Pop.	Jan	Feb	Mar	Apr	May	Jun	Jul	Aug	Sep	Oct	Nov	Dec	Total
	85	104	110	107	99	97	90	88	90	84	79	92	<b>94</b>

