

# City and County of San Francisco



Juvenile Probation Department

---

## **Monthly Report for August 2010**

Presented to the Juvenile Probation Commission

September 8<sup>th</sup>, 2010

William P. Siffermann  
Chief Probation Officer

Prepared by Jose Luis Perla  
Information Technology Director  
(415) 753-7686  
[jose.perla@sfgov.org](mailto:jose.perla@sfgov.org)

# Table of Contents

---

## **Comparison Drug Charges and Other Criminal Offenses**

Youth Admitted to Juvenile Hall for Drug Related Charges.....	1
Youth Admitted to Juvenile Hall for Other Criminal Offenses	
Demographics Characteristics .....	2
Youth Admitted to Juvenile Hall for Other Criminal Offenses	
Geographical Residence .....	3
Geographical Residence of Youth -GIS Map by Zip Code .....	4
Geographical Residence of Youth -GIS Map by Supervisorial District .....	5
Geographical Residence of Youth -GIS Map by SFPD District .....	6

## **Section II Current Month General Detail**

Probation Referrals, Juvenile Admissions And Average Daily Population .....	4
Juvenile Hall Admissions and Average Daily Population.....	5
Commitments to out-of-home placement .....	6
Commitments to California Youth Authority .....	7
Log Cabin Ranch Admissions and Average Daily Population.....	8
Probation Referrals .....	9
Bay Area Resident Juvenile Hall Comparison .....	10
Juvenile Hall Admissions .....	11
Juvenile Hall Detainees by Detention Reason.....	12
Juvenile Hall Average Daily Population by Rated Capacity .....	13
Juvenile Hall Average Length of Stay .....	14

## **Section III Demographics**

Juvenile Hall Detainees by Sex and Race/Ethnic Origin.....	15
Juvenile Hall Detainees by Age.....	16
Juvenile Hall Detainees by Age and Sex .....	17
Juvenile Hall Detainees by Geographic Residence of Youth .....	18
Juvenile Hall Detainees by Race/Ethnic Origin and Sex.....	19

## **Section IV**

### **Historical Information**

2007-2009 Probation Referrals .....	20
2007-2009 Juvenile Hall Admissions .....	21
2007-2009 Juvenile Hall Average Daily Population .....	22

---

# **Section I**

## **Summary Reports**

## Summary Report for the Month of August 2010

<b>Juvenile Hall</b>	<i>July 2009</i>	<i>July 2010</i>	<i>August 2009</i>	<i>August 2010</i>	<i>YTD 2009</i>	<i>YTD 2010</i>
Admissions	127	82	118	100	1102	934
Average Daily Population	112	90	108	88	116	97
Average Length of Stay (Releases)	25.98	38.94	27.24	38.86	23.24	25.69
Average Length of Stay (In Custody)	92.62	65.61	89.96	55.63	79.05	57.90
Releases	123	88	111	99	1080	920
<b>Log Cabin Ranch</b>						
Admissions:						
First Time Commitments	3	2	1	4	12	17
Recommitments	0	0	0	0	2	0
<i>Total</i>	<b>3</b>	<b>2</b>	<b>1</b>	<b>4</b>	<b>14</b>	<b>17</b>
Releases:						
Graduated	1	0	0	2	7	11
Escape	1	0	0	2	6	4
Other releases	0	0	2	1	14	4
<i>Total</i>	<b>2</b>	<b>0</b>	<b>2</b>	<b>5</b>	<b>27</b>	<b>19</b>
Average Daily Population	12	14	14	14	14	12

## Summary Report for the Month of August 2010

Probation Services	July 2010	August 2010	Year To Date 2010
Probation Referrals	132	171	1793
Total Petitions including violation of probation	78	96	820
Selected Court Dispositions:			
California Youth Authority	0	0	0
Log Cabin Ranch	3	3	18
Out of Home Placement	10	7	81
Ward Probation	20	23	202
Non-Ward Probation (725a WI)	6	3	32
Informal Probation (654 WI)	16	12	95
Violation of Probation Petitions Filed	8	20	126
California Youth Authority Monthly Count San Francisco County Juvenile Court Cases August 31 <sup>st</sup> , 2010			
Category	Institutions	Parole	
Males			
White	0	1	
Hispanic	0	4	
African American	3	6	
Asian	0	0	
Native American	0	0	
Filipino	0	0	
Pacific Islander	1	1	
Other	0	0	
Total	4	11	
Females			
White	0	0	
Hispanic	0	1	
African American	1	0	
Asian	0	0	
Native American	0	0	
Filipino	0	0	
Pacific Islander	0	0	
Other	0	0	
Total	1	1	
Grand Total	5	12	

## Summary Report for the Month of August 2010

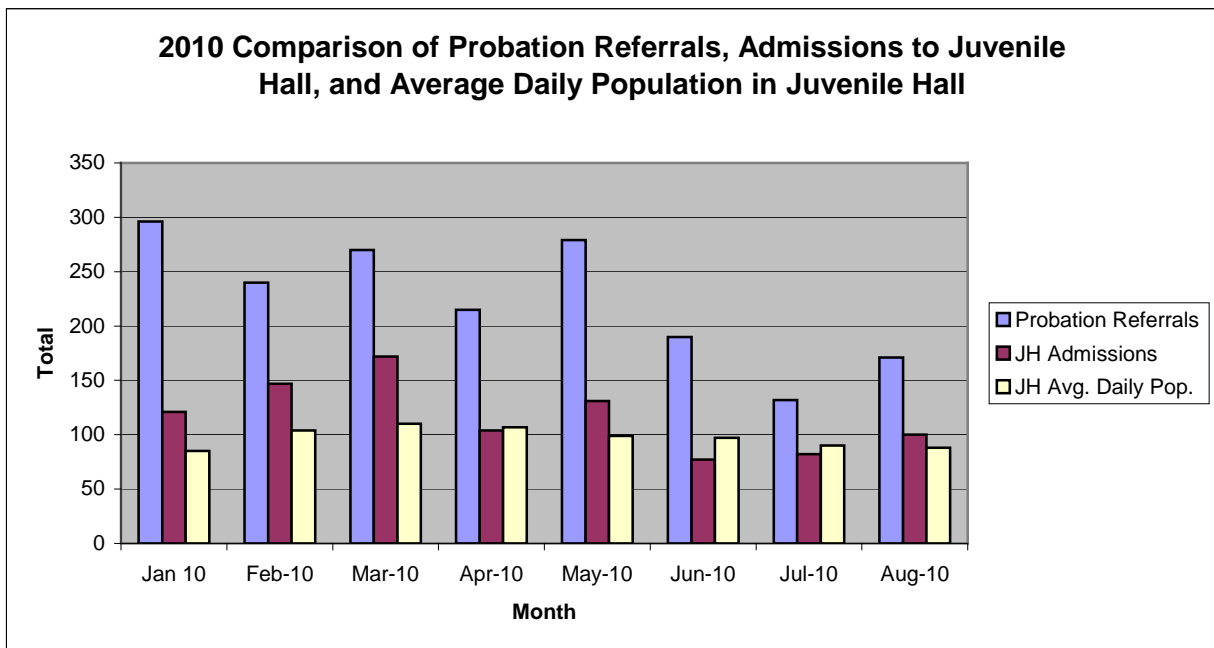
<b>Probation Services</b>			
<b>Active Cases by Units</b>	July 2010	August 2010	August Average # Youth by PO
CARC	152	158	158
Intake Green (Custody Screening Investigation)	113	110	13
Intake Gold (Probation Services 1)	170	158	22
Probation Services 2	193	229	22
Probation Services 3	231	219	21
Probation Services 4	189	181	22
Special Services	40	14	3
<i>Total</i>	<b>1,088</b>	<b>1,069</b>	<b>37</b>
Total Active Intake Cases	442	435	
Total Probation/Supervision Cases	646	634	

**Section II**  
**Current Month**  
**General Detail**



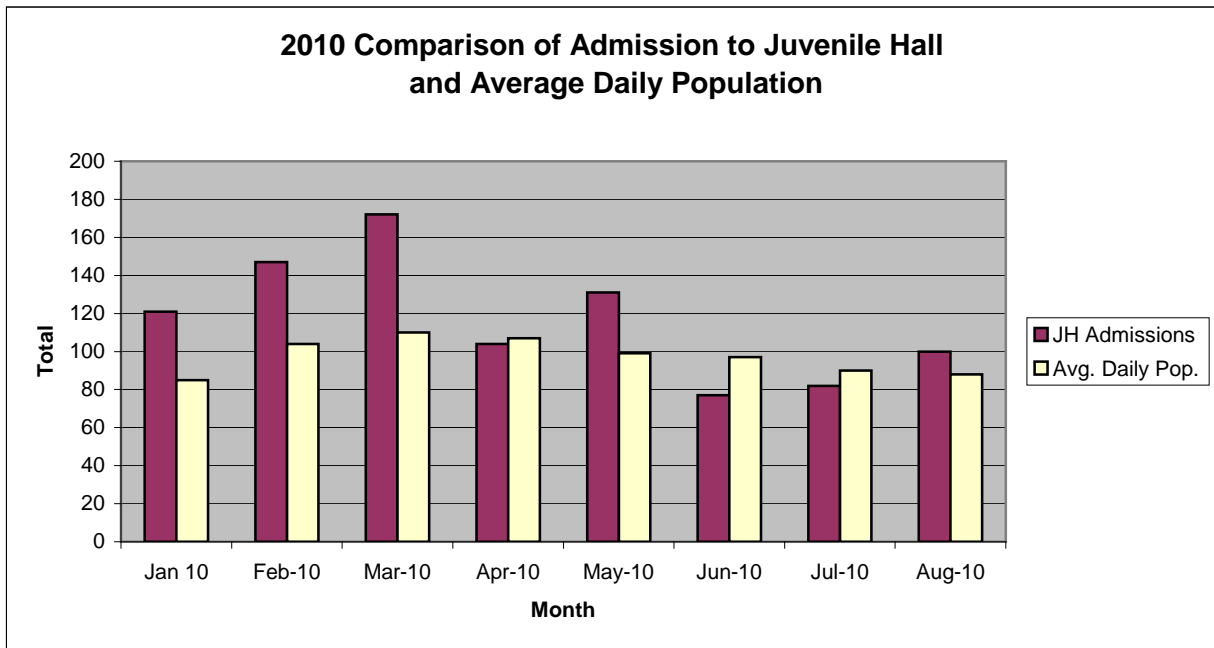
## San Francisco Juvenile Probation Department

	Jan 10	Feb-10	Mar-10	Apr-10	May-10	Jun-10	Jul-10	Aug-10	Sep-10	Oct-10	Nov-10	Dec-10
Probation Referrals	296	240	270	215	279	190	132	171				
JH Admissions	121	147	172	104	131	77	82	100				
JH Avg. Daily Pop.	85	104	110	107	99	97	90	88				



## San Francisco Juvenile Probation Department

	Jan 10	Feb-10	Mar-10	Apr-10	May-10	Jun-10	Jul-10	Aug-10	Sep-10	Oct-10	Nov-10	Dec-10
JH Admissions	121	147	172	104	131	77	82	100				
Avg. Daily Pop.	85	104	110	107	99	97	90	88				

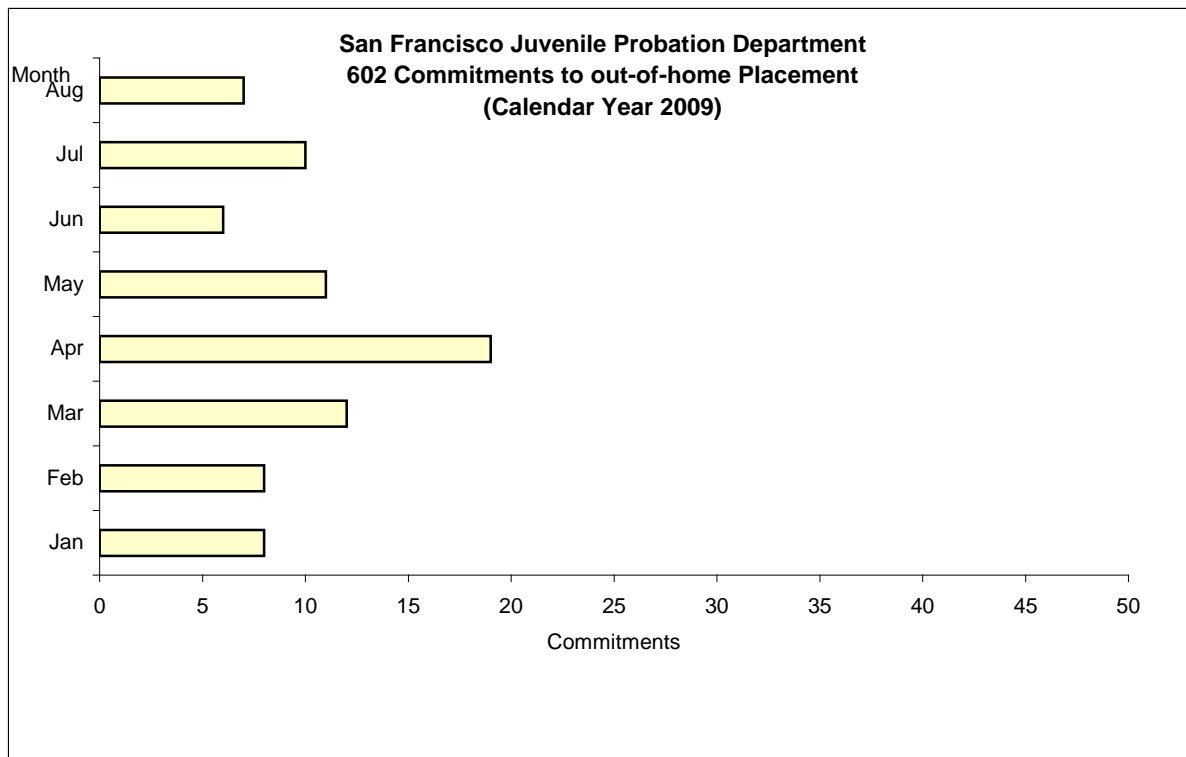


# Out-of-Home Placement<sup>1</sup>

## Commitments of 602's

### Calendar Year 2010

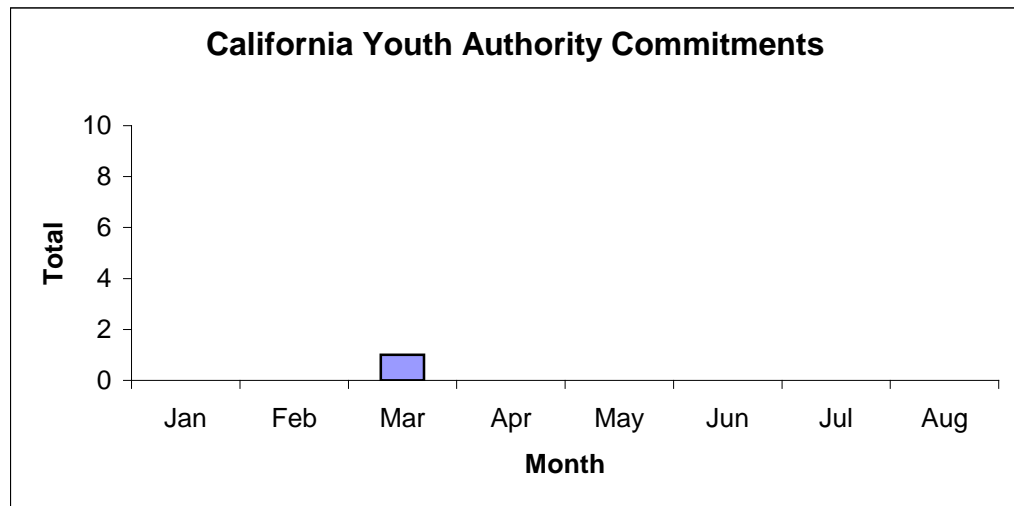
Commitments	Jan	Feb	Mar	Apr	May	Jun	Jul	Aug	Sep	Oct	Nov	Dec	Total
2010	8	8	12	19	11	6	10	7					81



<sup>1</sup> This report is based on 602 Commitments to out-of-home placements. If there is a 601 commitment, it will show as a footnote here. Figures are regularly updated to include reports from previous reporting periods.

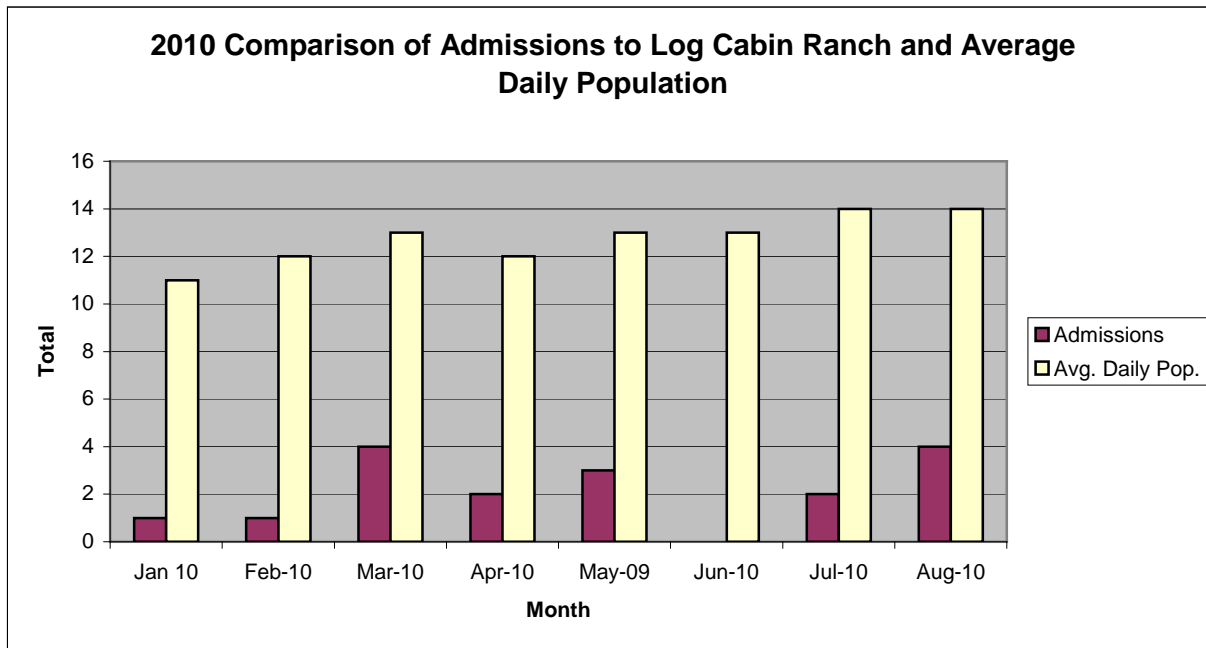
# California Youth Authority Commitments (Calendar Year 2010)

Commitments	Jan	Feb	Mar	Apr	May	Jun	Jul	Aug	Sep	Oct	Nov	Dec	Total
2010	0	0	1	0	0	0	0	0					1



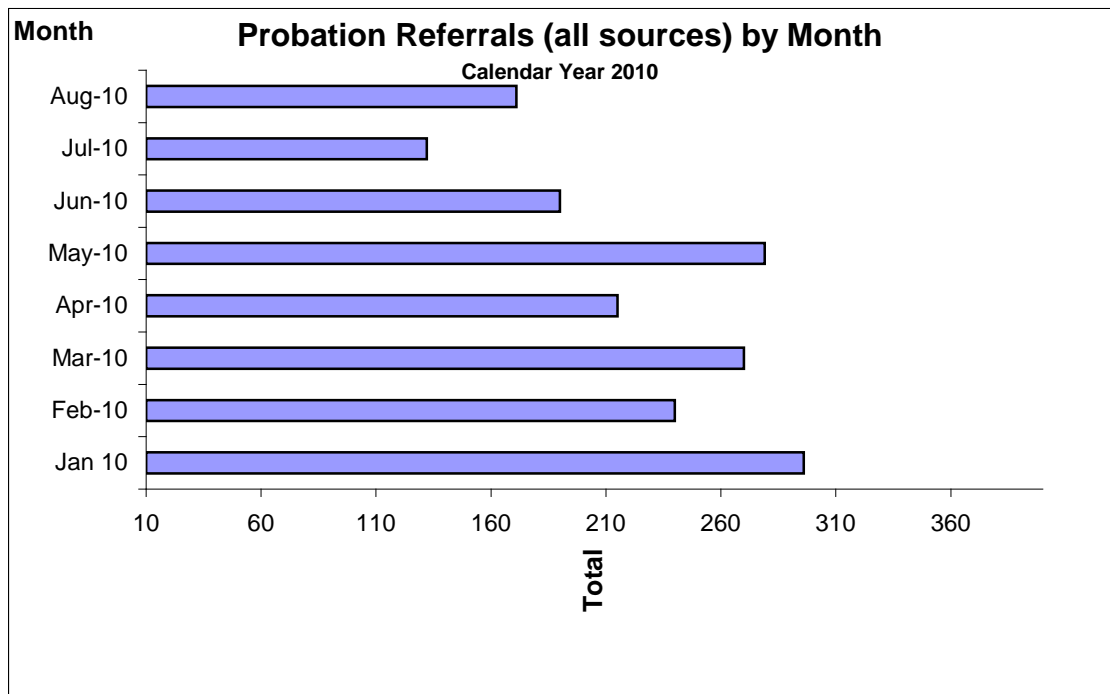
## San Francisco Juvenile Probation Department

	Jan 10	Feb-10	Mar-10	Apr-10	May-09	Jun-10	Jul-10	Aug-10	Sep-09	Oct-10	Nov-10	Dec-10
Admissions	1	1	4	2	3	0	2	4				
Avg. Daily Pop.	11	12	13	12	13	13	14	14				

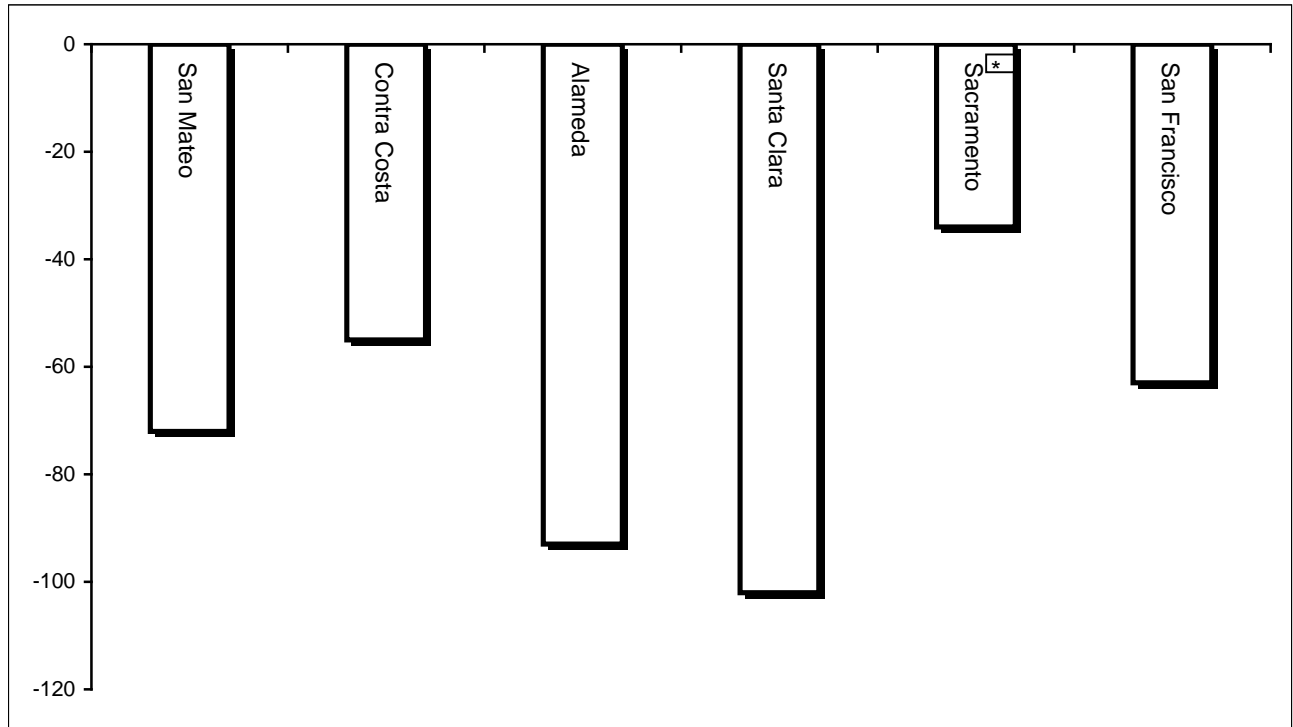


**Probation Referrals (all sources) by Month  
(602 W&I)**

Jan 10	296
Feb-10	240
Mar-10	270
Apr-10	215
May-10	279
Jun-10	190
Jul-10	132
Aug-10	171
Sep-10	
Oct-10	
Nov-10	
Dec-10	



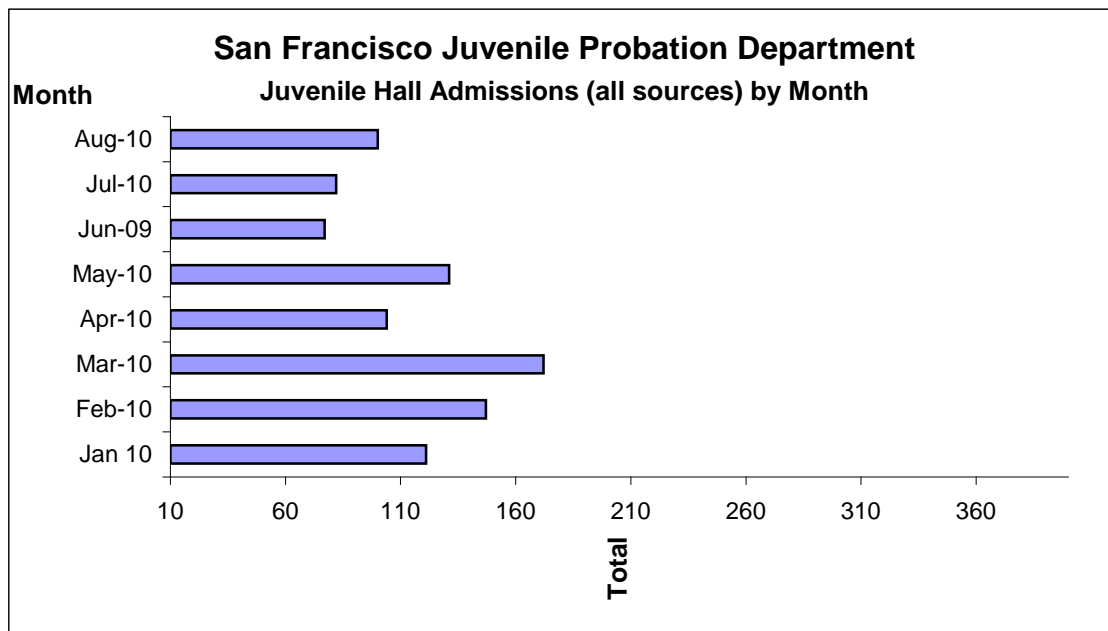
**Bay Area Resident Juvenile Hall Comparison**  
**Over/Under Capacity**  
on September 16th, 2010



	Rated Capacity	Actual	Over/Under Capacity
San Mateo	180	108	-72
Contra Costa	240	185	-55
Alameda	280	187	-93
Santa Clara	360	258	-102
Sacramento	308	274	-34
San Francisco	150	87	-63

## Juvenile Hall Admissions by Month Calendar Year 2010

Jan 10	121
Feb-10	147
Mar-10	172
Apr-10	104
May-10	131
Jun-09	77
Jul-10	82
Aug-10	100
Sep-10	
Oct-10	
Nov-10	
Dec-10	



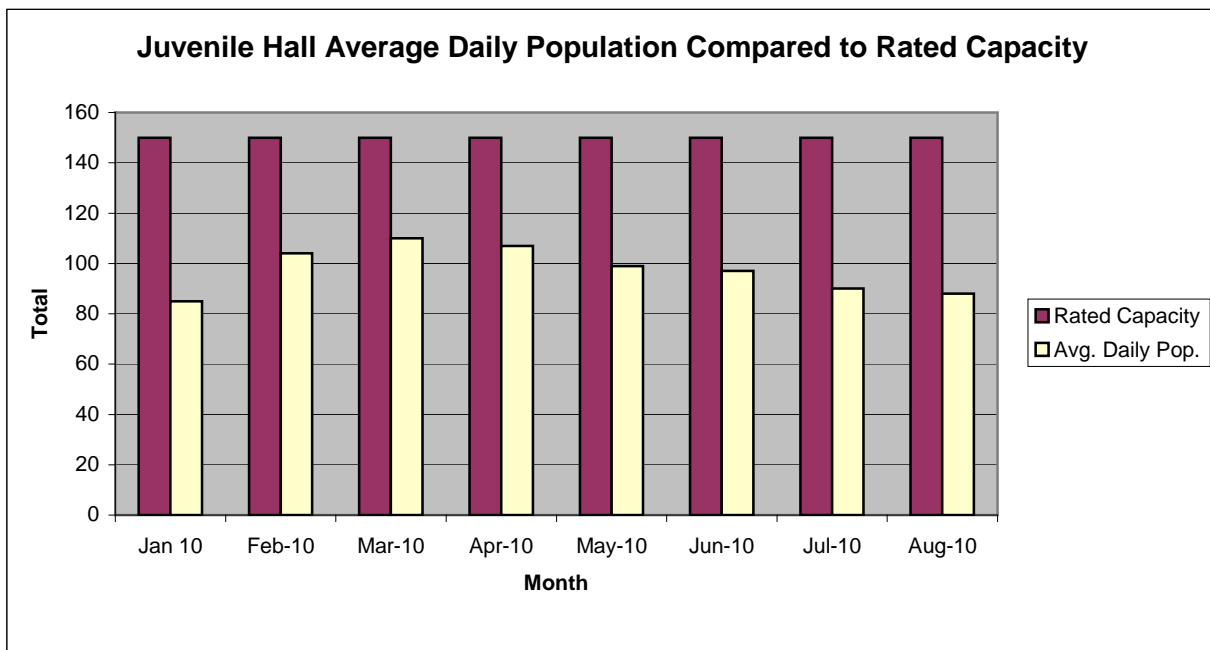


**Characteristics of Juvenile Hall Detainees on August 31st, 2010**

Detention Reason	Offense Code	*MF	Count	%
MURDER	187 (A) PC	F	3	3.30%
ATTEMPTED MURDER	664 /187 (A) PC	F	2	2.20%
KIDNAP TO COMMIT ROBBERY/RAPE/289 PC/ETC	209 (B)(1) PC	F	1	1.10%
CONTINUOUS SEXUAL ABUSE OF CHILD	288.5(A) PC	F	1	1.10%
SHOOT AT INHABITED DWELLING/VEHICLE/ETC	246 PC	F	1	1.10%
ROBBERY	211 PC	F	19	20.88%
TRANSPORT/SELL NARCOTIC/CONTROLLED SUBSTANCE	11352 (A) HS	F	1	1.10%
BURGLARY	459 PC	F	1	1.10%
PRISONER ESCAPE W/FORCE	4530 (A) PC	F	1	1.10%
ROBBERY:SECOND DEGREE	212.5(C) PC	F	1	1.10%
HAVE FIREARM AT PUBLIC/ETC SCHOOL	626.9(B) PC	F	2	2.20%
ASSAULT:DEADLY WEAPON OR FORCE:POSSIBLE GREAT BODILY INJ	245 (A) PC	F	1	1.10%
FORCE OR ADW NOT FIREARM:GBI LIKELY	245 (A)(1) PC	F	7	7.69%
FELON/ADDICT/ETC POSSESS FIREARM	12021 (A)(1) PC	F	1	1.10%
CARRY CONCEALED WEAPON IN VEHICLE W/PRIOR FELONY CONVICTION	12025 (A)(1) PC	F	3	3.30%
CARRY CONCEALED WEAPON:PROHIBITED CLASS/UNLAWFUL POSSESSION	12025 (B)(4) PC	F	1	1.10%
SODOMY	286 (A) PC	F	1	1.10%
WILLFUL DISCHARGE FIREARM IN NEGLIGENT MANNER	246.3 PC	F	1	1.10%
VIOLATE CIVIL RIGHTS:CAUSE VIOLENT INJURY/ETC	422.7(A) PC	F	1	1.10%
GRAND THEFT:MONEY/LABOR/PROPERTY OVER \$400	487 (A) PC	F	1	1.10%
TAKE VEHICLE W/O OWNER'S CONSENT/VEHICLE THEFT	10851 (A) VC	F	1	1.10%
PERSONATE TO MAKE OTHER LIABLE	529.3 PC	F	1	1.10%
MINOR ILLEGALLY POSSESS CONCEALED WEAPON WITH PRIOR	12101 (A)(1) PC	F	1	1.10%
VANDALISM (\$400 OR MORE)	594 (B)(1) PC	F	1	1.10%
ASSAULT ANY PERSON ON PUBLIC TRANSPORTATION/PROPERTY	241.3(A) PC	M	1	1.10%
MINOR ATTEMPT ESCAPE/ESCAPE COUNTY FACILITY	871 (A) WI	M	2	2.20%
VANDALISM (\$400 OR MORE)	594 (B)(1) PC	M	1	1.10%
MINOR ILLEGALLY POSSESS LIVE AMMUNITION	12101 (B)(1) PC	M	1	1.10%
FALSE IDENTIFICATION TO SPECIFIC PEACE OFFICER	148.9(B) PC	M	2	2.20%
FAIL TO OBEY ORDER OF JUVENILE COURT 602 WI	777 (A)(2) WI	M	6	6.59%
CHANGE OF PLACEMENT/PLACEMENT FAILURE	737 WI	M	3	3.30%
VIOLATION(S) OF HOME SUPERVISION CONDITION	628.1 WI	M	3	3.30%
BENCH WARRANT	BENCH WARRANT		2	2.20%
ARREST WARRANT	WRNT602		8	8.79%
COURT ORDER	CTORD 602		8	8.79%
		<b>Total</b>	<b>91</b>	<b>100.00%</b>
F=felony, M=Misdemeanor				

## San Francisco Juvenile Probation Department

	Jan 10	Feb-10	Mar-10	Apr-10	May-10	Jun-10	Jul-10	Aug-10	Sep-10	Oct-10	Nov-10	Dec-10
Rated Capacity	150	150	150	150	150	150	150	150				
Avg. Daily Pop.	85	104	110	107	99	97	90	88				



## Juvenile Hall Average Length of Stay

For the Month of August 2010

### <sup>1</sup>Released

<b>Range of Days</b>	<i>1-10 days</i>	<i>11-20 days</i>	<i>21-30 days</i>	<i>30 or more days</i>	<b>Total</b>
# of Youth Released	39	21	10	29	99
% of Population	39.39%	21.21%	10.10%	29.29%	100%
# of Days	161	329	249	2910	3649
% of Total Days	4.41%	9.02%	6.82%	79.75%	100%
Average Length of Stay	4.13	15.67	24.90	100.34	36.86

### <sup>2</sup>In Custody

<b>Range of Days</b>	<i>1-10 days</i>	<i>11-20 days</i>	<i>21-30 days</i>	<i>30 or more days</i>	<b>Total</b>
# of Youth Detained	29	12	10	40	91
% of Population	31.87%	13.19%	10.99%	43.96%	100%
# of Days	167	175	255	4465	5062
% of Total Days	3.30%	3.46%	5.04%	88.21%	100%
Average Length of Stay	5.76	14.58	25.50	111.63	55.63

Notes: Less than one day of stay is calculated as one day.

<sup>1</sup>Length of stay is calculated according to release date for those who are released.

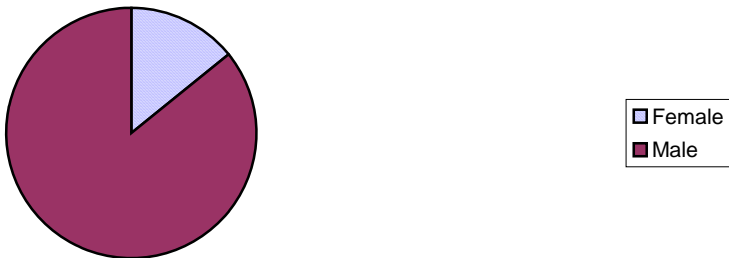
<sup>2</sup>For those still in custody, length of stay is calculated at the last day of the month.

# **Section III**

## **Demographics**

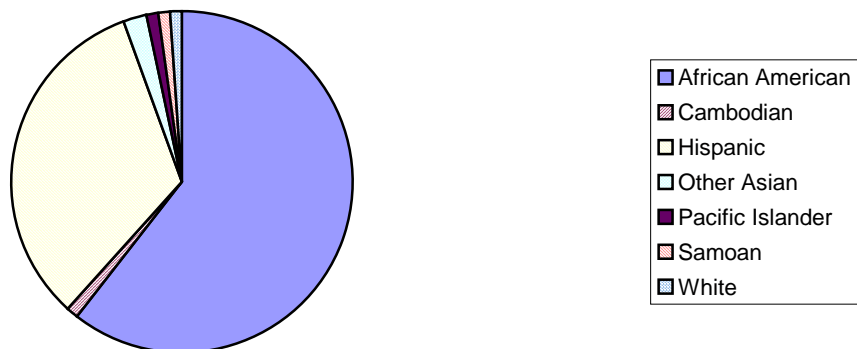
Gender	Frequency	Percent
Female	13	14.29%
Male	78	85.71%
<b>Total</b>	<b>91</b>	<b>100.00%</b>

**Demographic Characteristics  
Of Juvenile Hall Detainees on 8/31/10 by Gender**

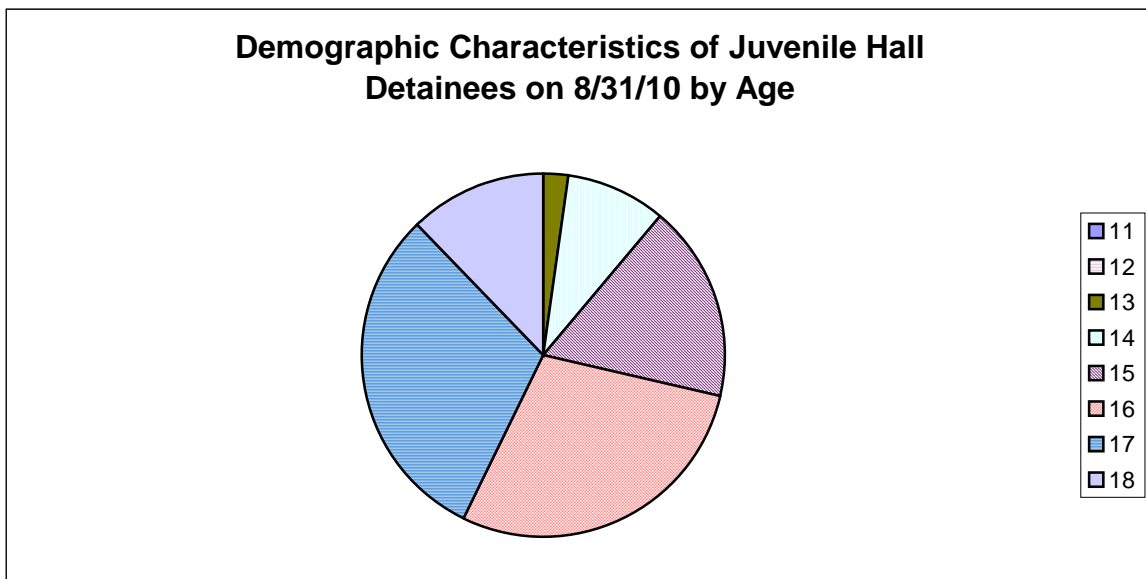


Race/Ethnic Origin	Frequency	Percent
African American	55	60.44%
Cambodian	1	1.10%
Hispanic	30	32.97%
Other Asian	2	2.20%
Pacific Islander	1	1.10%
Samoan	1	1.10%
White	1	1.10%
<b>Total</b>	<b>91</b>	<b>100.00%</b>

**Demographic Characteristics of Juvenile Hall Detainees on  
8/31/10 by Race**

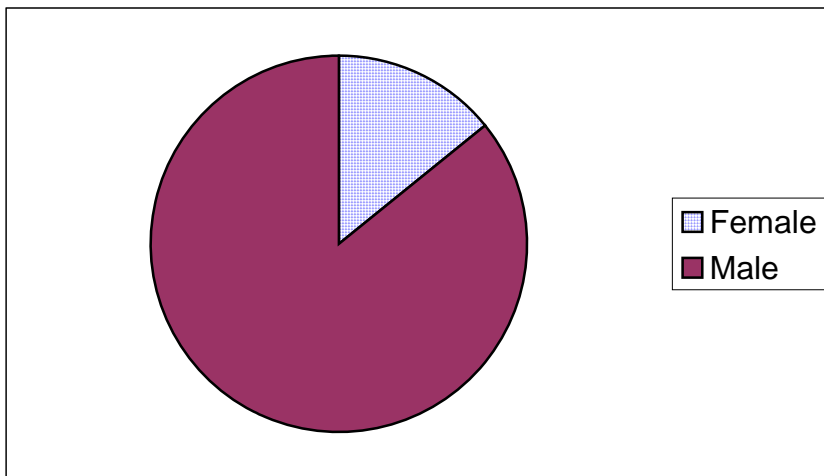


Age	Frequency	Percent
11	0	0.00%
12	0	0.00%
13	2	2.20%
14	8	8.79%
15	16	17.58%
16	26	28.57%
17	28	30.77%
18	11	12.09%
<b>Total</b>	<b>91</b>	<b>100.00%</b>



Demographic Characteristics of Juvenile Hall Detainees  
on 8/31/2010  
Age by Gender

Age	Female	Male	Total	
11	0	0	0	0.00%
12	0	0	0	0.00%
13	0	2	2	2.20%
14	2	6	8	8.79%
15	3	13	16	17.58%
16	2	24	26	28.57%
17	6	22	28	30.77%
18 and over	0	11	11	12.09%
<b>Total</b>	<b>13</b>	<b>78</b>	<b>91</b>	<b>100.00%</b>
	<b>14.29%</b>	<b>85.71%</b>	<b>100.00%</b>	



Demographic Characteristics  
Of Juvenile Hall Detainees on August 31<sup>st</sup>, 2010

---

<b>Geographic Residence of Youth</b>	<b>Count</b>	<b>%</b>
Richmond	2	2.2%
Marina	1	1.1%
North of Market/Downtown	2	2.2%
Treasure Island/Yerba Buena Island	3	3.3%
Western Addition	8	8.8%
South of Market/Tenderloin	1	1.1%
Sunset	2	2.2%
Haight Ashbury/Castro/Upper Market	1	1.1%
Inner Mission	7	7.7%
Potrero	2	2.2%
Parkside	2	2.2%
Ingleside (West of Twin Peaks)	3	3.3%
Outer Mission	11	12.1%
Bayview	29	31.9%
Non-San Francisco and Unavailable	17	18.7%
<b>Total</b>	<b>91</b>	<b>100.0%</b>

<b>Non-San Francisco and Unavailable</b>	<b>Count</b>	<b>%</b>
Fairfield	1	5.9%
Honduras	1	5.9%
Oakland	3	17.6%
Richmond	1	5.9%
San Jose	1	5.9%
San Leandro	1	5.9%
Santa Rosa	2	11.8%
South San Francisco	1	5.9%
Stockton	1	5.9%
Suinsun	1	5.9%
Unavailable	4	23.5%
<b>Total</b>	<b>17</b>	<b>100.0%</b>

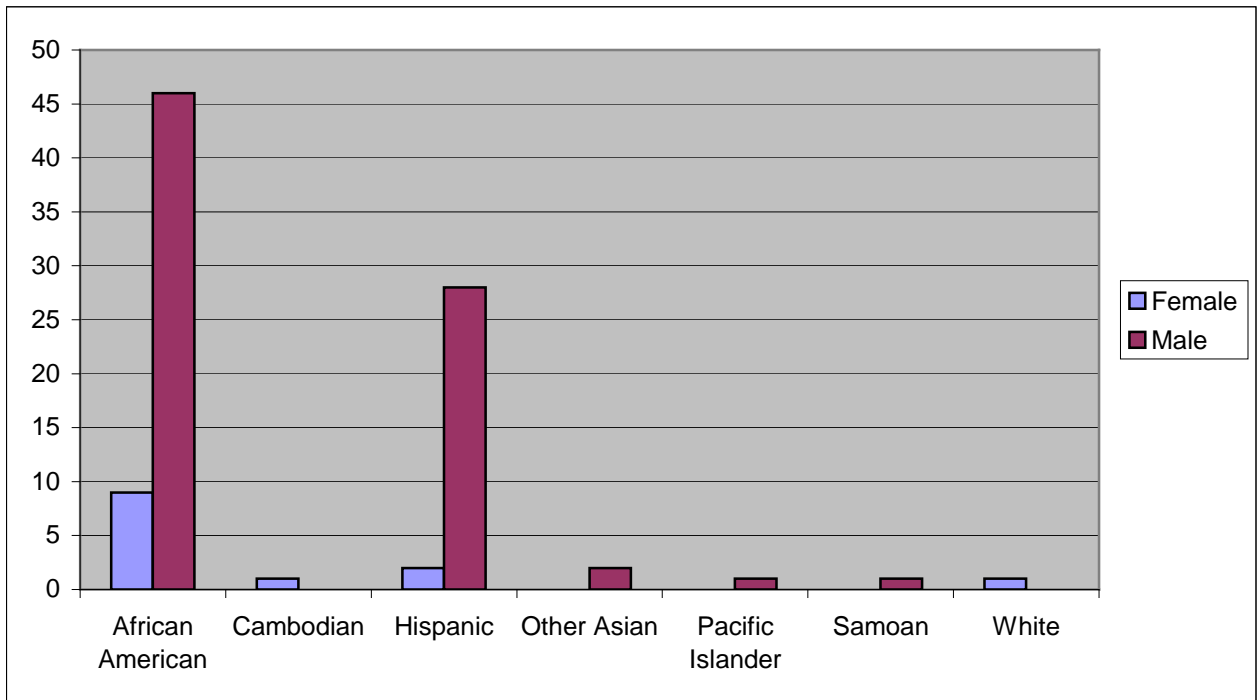


Demographic Characteristics  
Of Juvenile Hall Detainees on August 31<sup>st</sup>, 2010

---

**Race/Ethnic Origin by Gender**

Race/Ethnicity	Female	Male	Total	%
African American	9	46	55	60.4%
Cambodian	1	0	1	1.1%
Hispanic	2	28	30	33.0%
Other Asian	0	2	2	2.2%
Pacific Islander	0	1	1	1.1%
Samoan	0	1	1	1.1%
White	1	0	1	1.1%
<b>Total</b>	<b>13</b>	<b>78</b>	<b>91</b>	<b>100.0%</b>

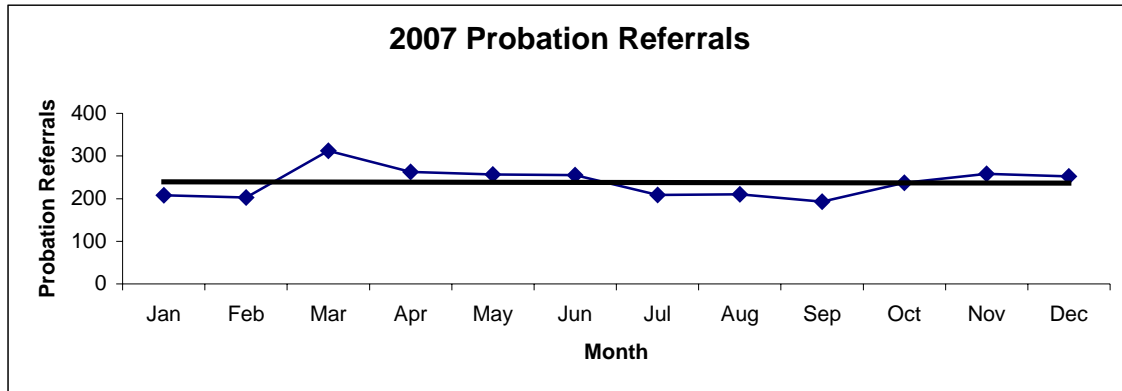


# **Section IV**

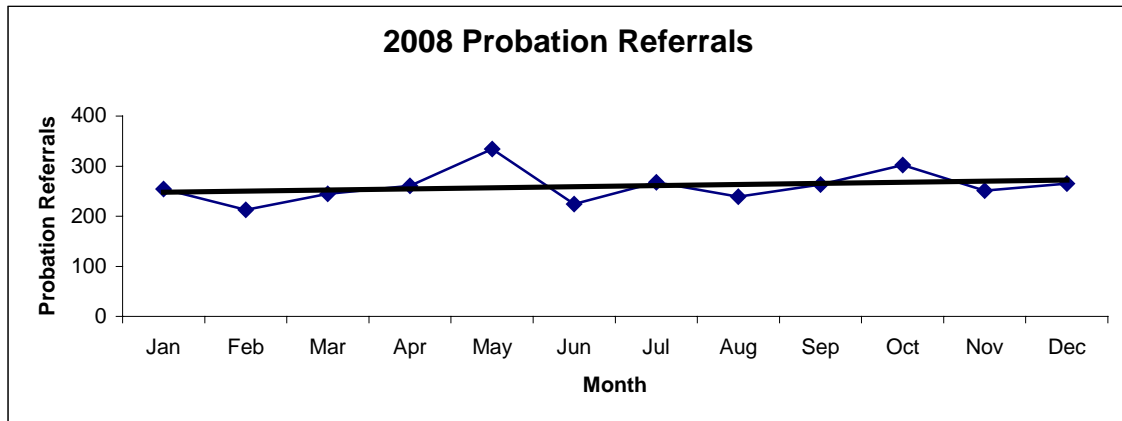
## **Historical Information**

San Francisco Juvenile Probation Department  
**Probation Referrals (all sources) By Month**  
 (2007-2009)

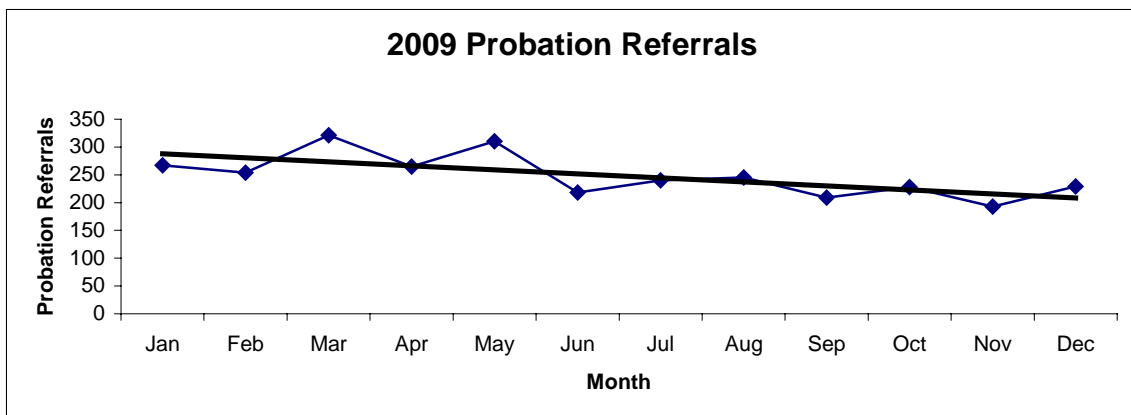
2007 Probation Referrals	Jan	Feb	Mar	Apr	May	Jun	Jul	Aug	Sep	Oct	Nov	Dec	Total
	208	203	312	263	257	255	209	210	193	237	258	252	<b>2857</b>



2008 Probation Referrals	Jan	Feb	Mar	Apr	May	Jun	Jul	Aug	Sep	Oct	Nov	Dec	Total
	254	213	245	261	334	224	268	239	263	302	251	265	<b>3119</b>

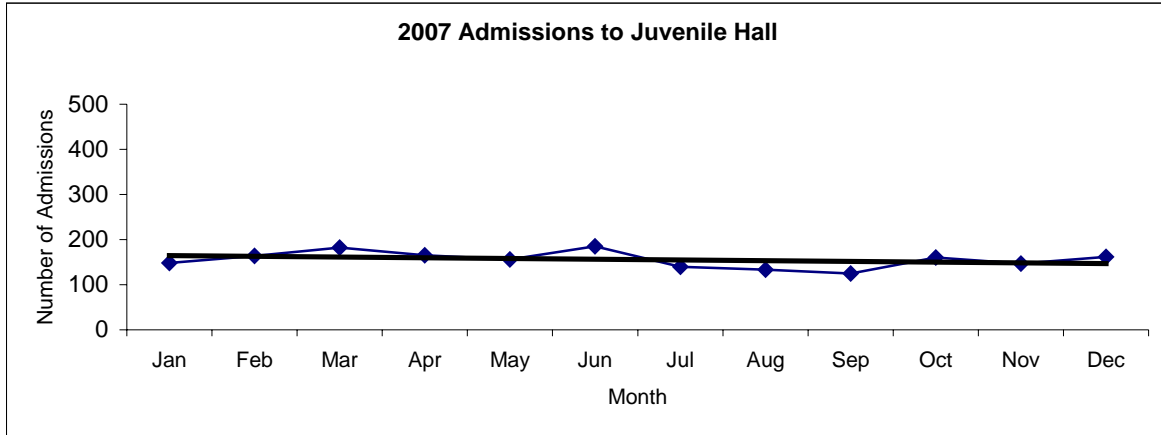


2009 Probation Referrals	Jan	Feb	Mar	Apr	May	Jun	Jul	Aug	Sep	Oct	Nov	Dec	Total
	267	254	321	265	310	218	240	245	209	228	193	229	<b>2979</b>

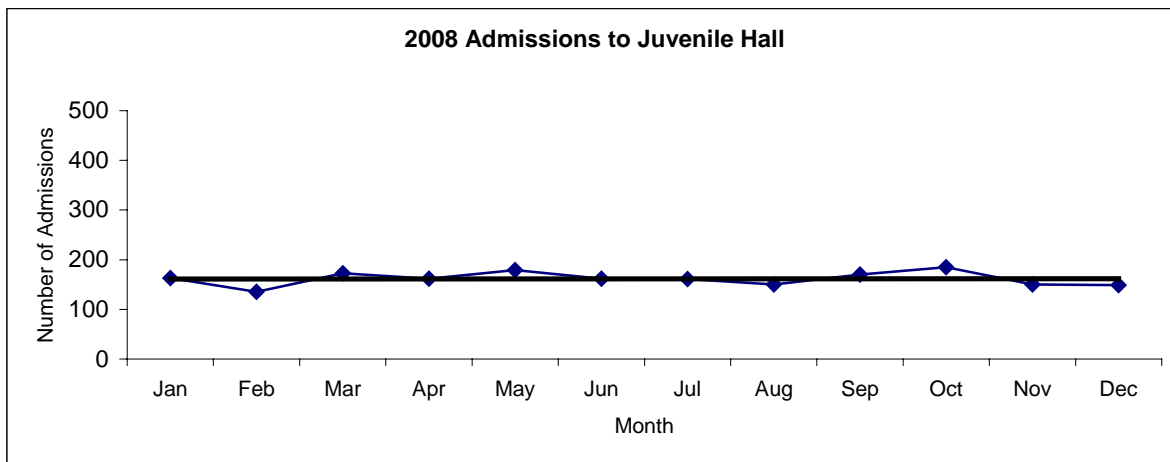


**San Francisco Juvenile Probation**  
**Juvenile Hall Admissions By Month**  
(2007-2009)

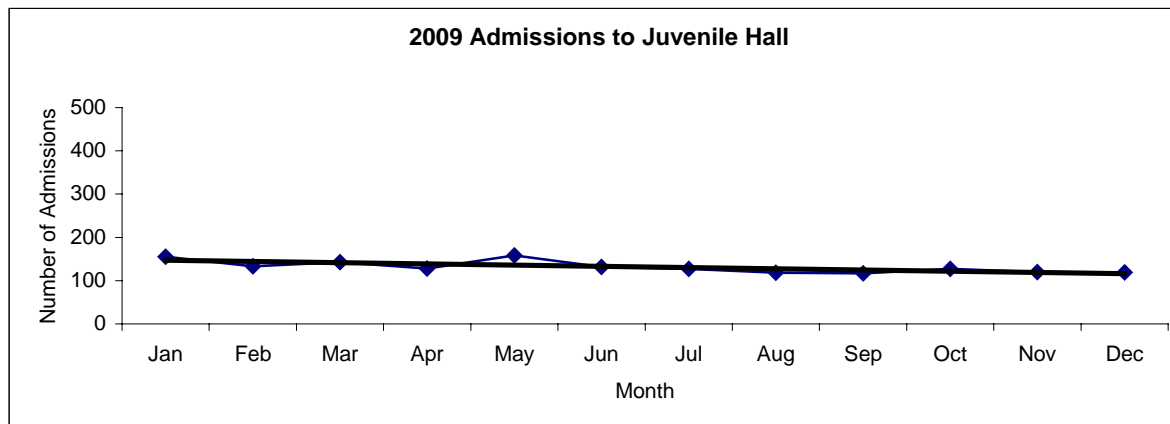
2007 Admissions	Jan	Feb	Mar	Apr	May	Jun	Jul	Aug	Sep	Oct	Nov	Dec	Total
	148	164	182	165	156	185	140	133	125	160	147	162	<b>1867</b>



2008 Admissions	Jan	Feb	Mar	Apr	May	Jun	Jul	Aug	Sep	Oct	Nov	Dec	Total
	163	135	173	162	179	162	161	150	170	185	150	149	<b>1939</b>

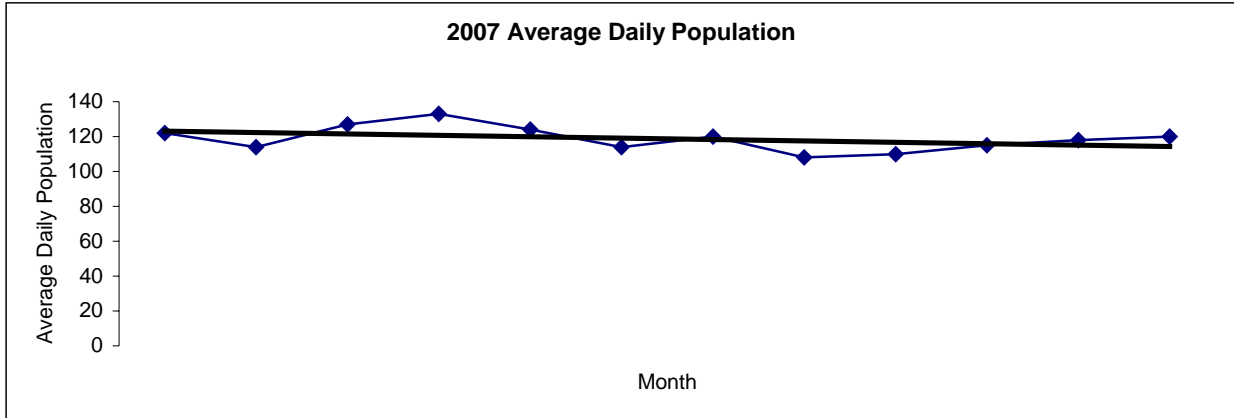


2009 Admissions	Jan	Feb	Mar	Apr	May	Jun	Jul	Aug	Sep	Oct	Nov	Dec	Total
	155	133	143	128	158	132	127	118	117	127	120	119	<b>1577</b>

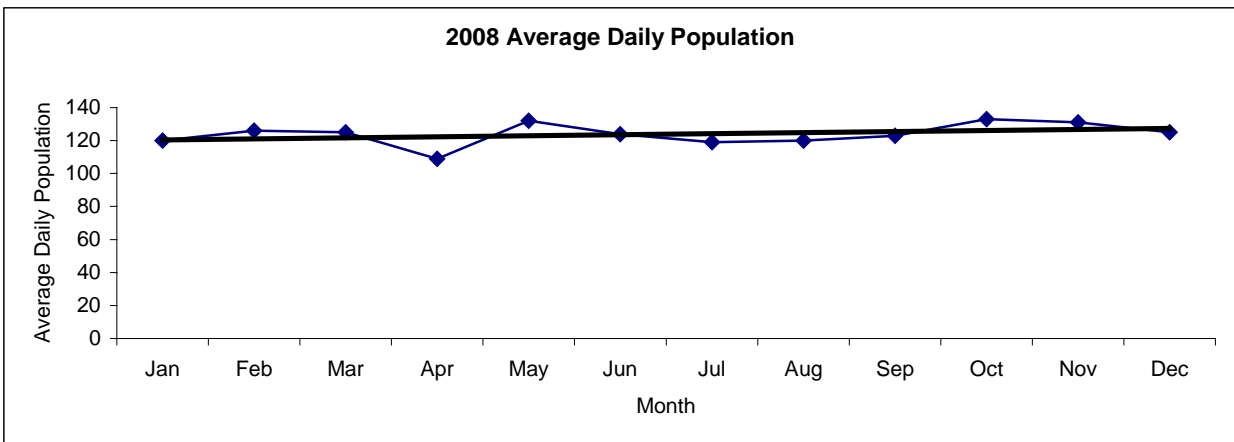


San Francisco Juvenile Probation  
**Juvenile Hall Average Daily Population By Month**  
 (2007-2009)

2007 Avg. Daily Pop.	Jan	Feb	Mar	Apr	May	Jun	Jul	Aug	Sep	Oct	Nov	Dec	Total
	122	114	127	133	124	114	120	108	110	115	118	120	<b>119</b>



2008 Avg. Daily Pop.	Jan	Feb	Mar	Apr	May	Jun	Jul	Aug	Sep	Oct	Nov	Dec	Total
	120	126	125	109	132	124	119	120	123	133	131	125	<b>114</b>



2009 Avg. Daily Pop.	Jan	Feb	Mar	Apr	May	Jun	Jul	Aug	Sep	Oct	Nov	Dec	Total
	107	119	117	127	127	114	112	108	105	101	95	77	<b>109</b>

