

# City and County of San Francisco



Juvenile Probation Department

---

## **Monthly Report for November 2010**

Presented to the Juvenile Probation Commission

December 8<sup>th</sup>, 2010

William P. Siffermann  
Chief Probation Officer

Prepared by Jose Luis Perla  
Information Technology Director  
(415) 753-7686  
[jose.perla@sfgov.org](mailto:jose.perla@sfgov.org)

# Table of Contents

---

## **Comparison Drug Charges and Other Criminal Offenses**

Youth Admitted to Juvenile Hall for Drug Related Charges.....	1
Youth Admitted to Juvenile Hall for Other Criminal Offenses	
Demographics Characteristics .....	2
Youth Admitted to Juvenile Hall for Other Criminal Offenses	
Geographical Residence .....	3
Geographical Residence of Youth -GIS Map by Zip Code .....	4
Geographical Residence of Youth -GIS Map by Supervisorial District .....	5
Geographical Residence of Youth -GIS Map by SFPD District .....	6

## **Section II Current Month General Detail**

Probation Referrals, Juvenile Admissions And Average Daily Population .....	4
Juvenile Hall Admissions and Average Daily Population.....	5
Commitments to out-of-home placement .....	6
Commitments to California Youth Authority .....	7
Log Cabin Ranch Admissions and Average Daily Population.....	8
Probation Referrals .....	9
Bay Area Resident Juvenile Hall Comparison .....	10
Juvenile Hall Admissions .....	11
Juvenile Hall Detainees by Detention Reason.....	12
Juvenile Hall Average Daily Population by Rated Capacity .....	13
Juvenile Hall Average Length of Stay .....	14

## **Section III Demographics**

Juvenile Hall Detainees by Sex and Race/Ethnic Origin.....	15
Juvenile Hall Detainees by Age.....	16
Juvenile Hall Detainees by Age and Sex .....	17
Juvenile Hall Detainees by Geographic Residence of Youth .....	18
Juvenile Hall Detainees by Race/Ethnic Origin and Sex.....	19

## **Section IV**

### **Historical Information**

2007-2009 Probation Referrals .....	20
2007-2009 Juvenile Hall Admissions .....	21
2007-2009 Juvenile Hall Average Daily Population .....	22

---

# **Section I**

## **Summary Reports**

## Summary Report for the Month of November 2010

<b>Juvenile Hall</b>	<i>October 2009</i>	<i>October 2010</i>	<i>November 2009</i>	<i>November 2010</i>	<i>YTD 2009</i>	<i>YTD 2010</i>
Admissions	127	96	120	108	1466	1242
Average Daily Population	101	84	95	79	112	93
Average Length of Stay (Releases)	36.28	27.80	25.16	31.42	26.44	25.72
Average Length of Stay (In Custody)	75.74	68.30	66.07	53.29	76.20	58.90
Releases	133	107	128	101	1472	1232
<b>Log Cabin Ranch</b>						
Admissions:						
First Time Commitments	2	1	0	4	14	27
Recommitments	0	1	1	1	3	2
<i>Total</i>	<b>2</b>	<b>2</b>	<b>1</b>	<b>5</b>	<b>17</b>	<b>29</b>
Releases:						
Graduated	1	2	1	1	11	15
Escape	0	0	0	0	7	4
Other releases	0	1	1	1	16	7
<i>Total</i>	<b>1</b>	<b>3</b>	<b>2</b>	<b>2</b>	<b>34</b>	<b>26</b>
Average Daily Population	11	18	13	18	14	14

## Summary Report for the Month of November 2010

<b>Probation Services</b>	<i>October 2010</i>	<i>November 2010</i>	<i>Year To Date 2010</i>
Probation Referrals	168	195	2376
Total Petitions including violation of probation	81	100	1102
Selected Court Dispositions:			
California Youth Authority	0	0	2
Log Cabin Ranch	3	6	31
Out of Home Placement	9	8	103
Ward Probation	25	11	266
Non-Ward Probation (725a WI)	3	3	39
Informal Probation (654 WI)	10	13	131
Violation of Probation Petitions Filed	15	18	186
<b>California Youth Authority Monthly Count</b> <b>San Francisco County Juvenile Court Cases</b> November 30 <sup>th</sup> , 2010			
Category	Institutions	Parole	
<b>Males</b>			
White	0	1	
Hispanic	0	2	
African American	5	7	
Asian	0	0	
Native American	0	0	
Filipino	0	0	
Pacific Islander	1	0	
Other	0	0	
<b>Total</b>	<b>6</b>	<b>10</b>	
<b>Females</b>			
White	0	0	
Hispanic	1	0	
African American	0	1	
Asian	0	0	
Native American	0	0	
Filipino	0	0	
Pacific Islander	0	0	
Other	0	0	
<b>Total</b>	<b>1</b>	<b>1</b>	
<b>Grand Total</b>	<b>7</b>	<b>11</b>	

## Summary Report for the Month of November 2010

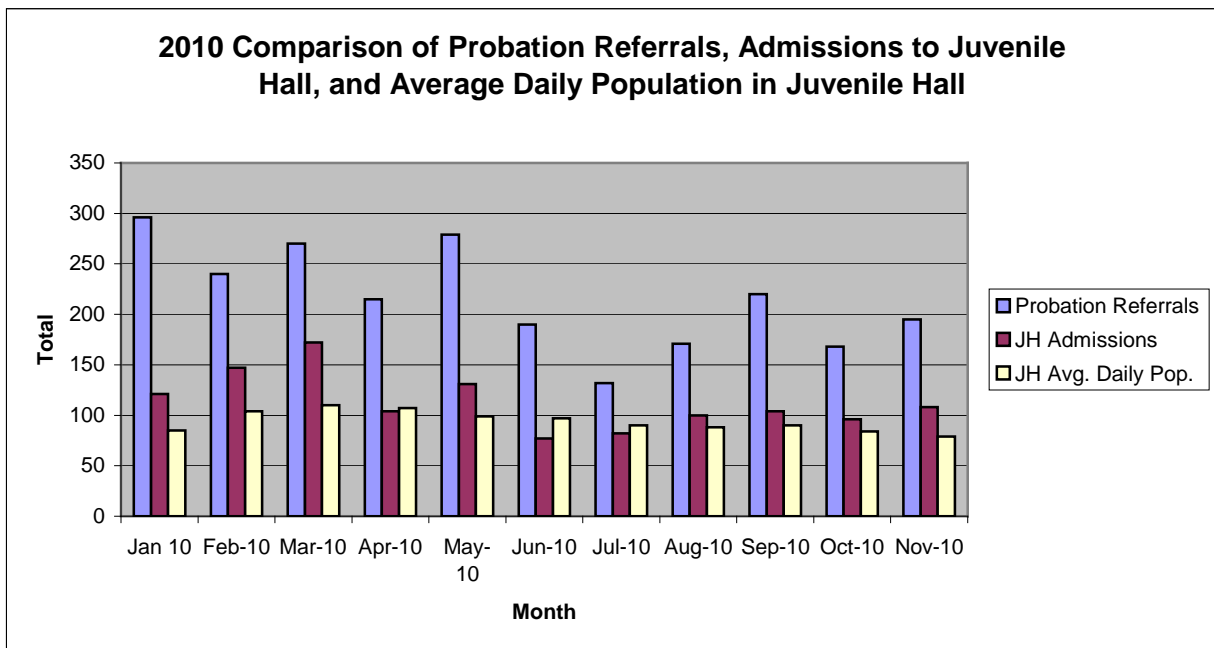
<b>Probation Services</b>			
<b>Active Cases by Units</b>	October 2010	November 2010	November Average # Youth by PO
CARC	163	178	178
Intake Green (Custody Screening Investigation)	100	107	13
Intake Gold (Probation Services 1)	171	174	24
Probation Services 2	232	213	21
Probation Services 3	214	205	20
Probation Services 4	179	184	23
Special Services	13	13	3
<i>Total</i>	<b>1,072</b>	<b>1,074</b>	<b>40</b>
Total Active Intake Cases	437	464	
Total Probation/Supervision Cases	635	610	

**Section II**  
**Current Month**  
**General Detail**



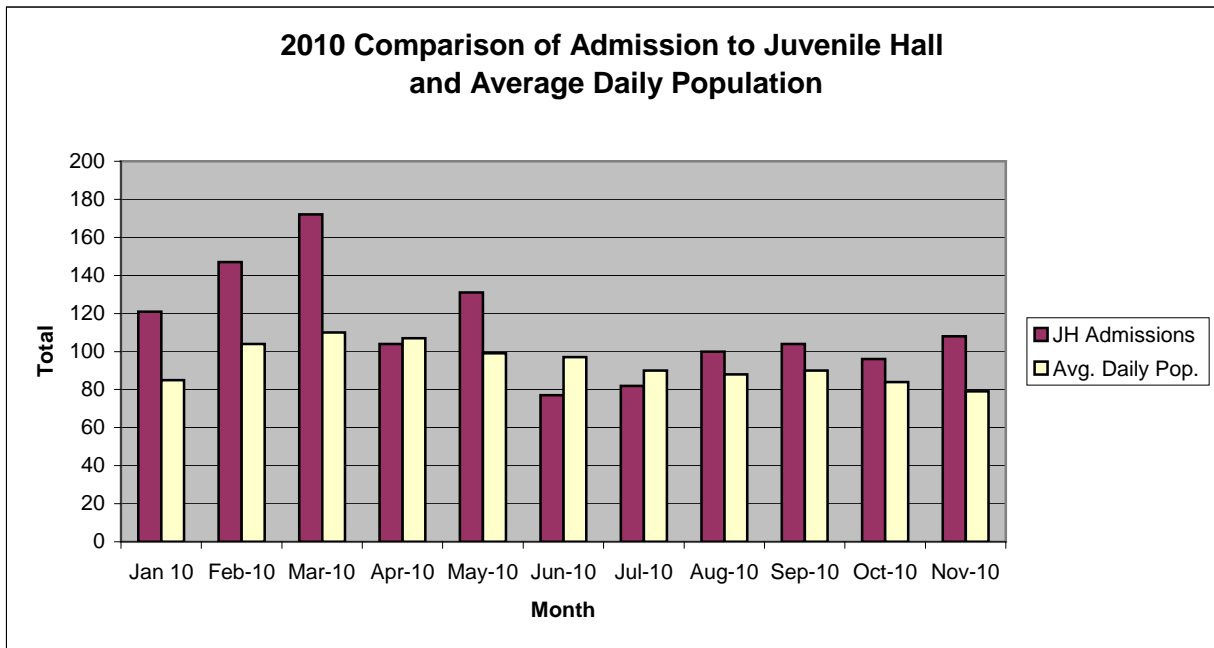
## San Francisco Juvenile Probation Department

	Jan 10	Feb-10	Mar-10	Apr-10	May-10	Jun-10	Jul-10	Aug-10	Sep-10	Oct-10	Nov-10	Dec-10
Probation Referrals	296	240	270	215	279	190	132	171	220	168	195	
JH Admissions	121	147	172	104	131	77	82	100	104	96	108	
JH Avg. Daily Pop.	85	104	110	107	99	97	90	88	90	84	79	



## San Francisco Juvenile Probation Department

	Jan 10	Feb-10	Mar-10	Apr-10	May-10	Jun-10	Jul-10	Aug-10	Sep-10	Oct-10	Nov-10	Dec-10
JH Admissions	121	147	172	104	131	77	82	100	104	96	108	
Avg. Daily Pop.	85	104	110	107	99	97	90	88	90	84	79	

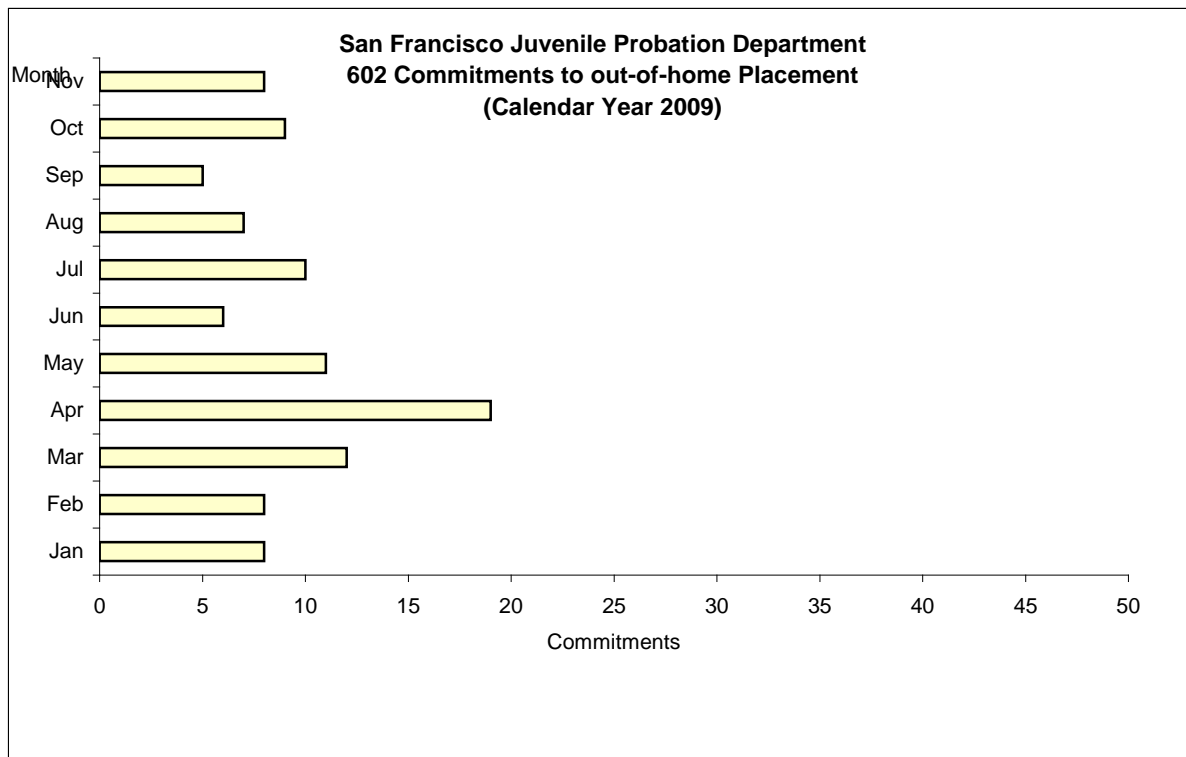


# Out-of-Home Placement<sup>1</sup>

## Commitments of 602's

### Calendar Year 2010

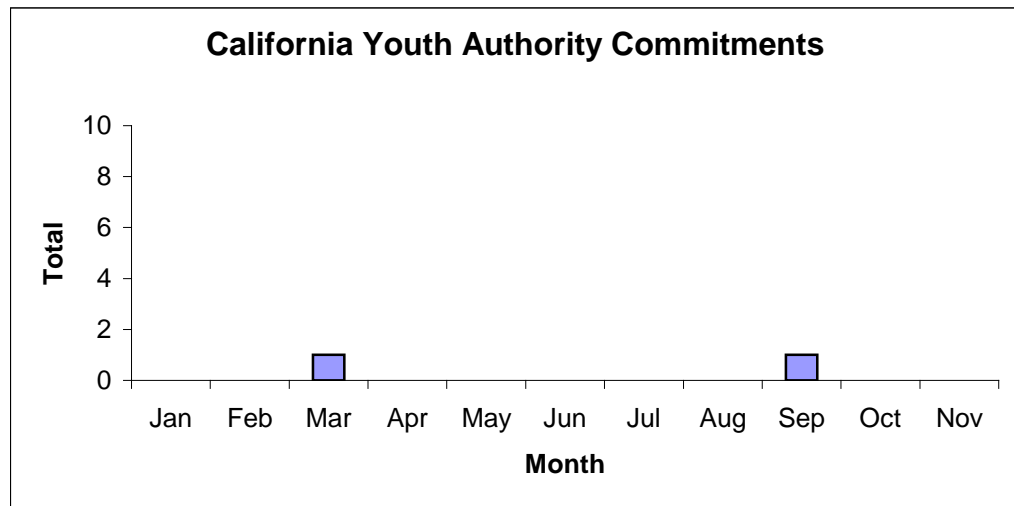
Commitments	Jan	Feb	Mar	Apr	May	Jun	Jul	Aug	Sep	Oct	Nov	Dec	Total
2010	8	8	12	19	11	6	10	7	5	9	8		103



<sup>1</sup> This report is based on 602 Commitments to out-of-home placements. If there is a 601 commitment, it will show as a footnote here. Figures are regularly updated to include reports from previous reporting periods.

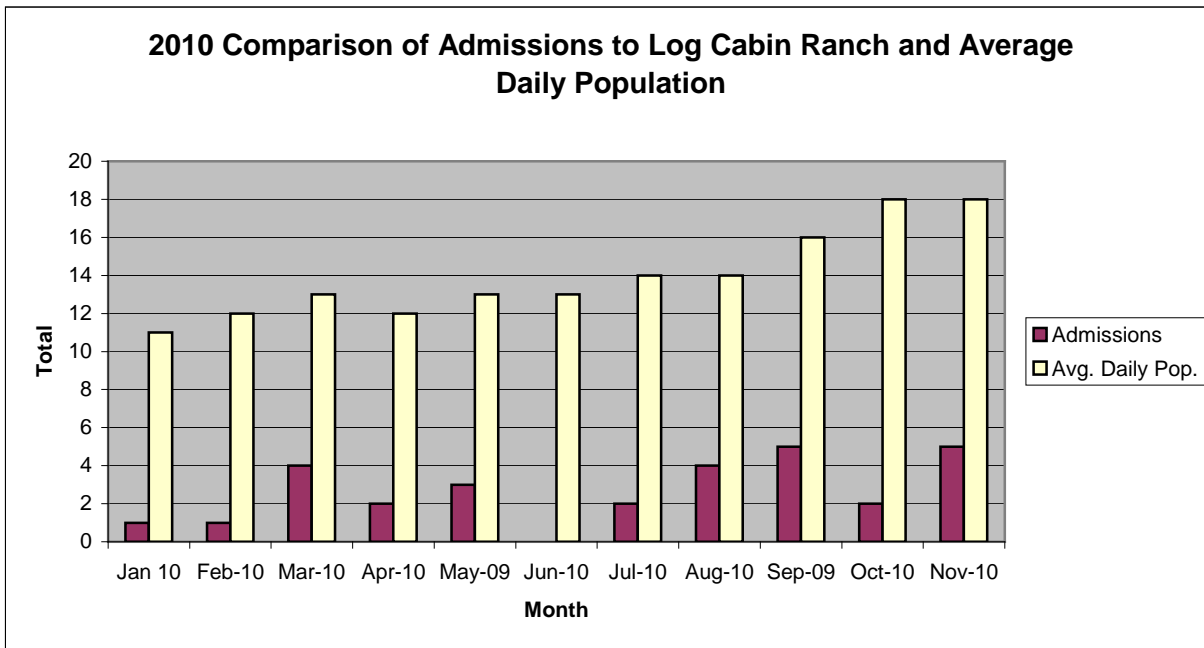
# California Youth Authority Commitments (Calendar Year 2010)

Commitments	Jan	Feb	Mar	Apr	May	Jun	Jul	Aug	Sep	Oct	Nov	Dec	Total
2010	0	0	1	0	0	0	0	0	1	0	0		2



## San Francisco Juvenile Probation Department

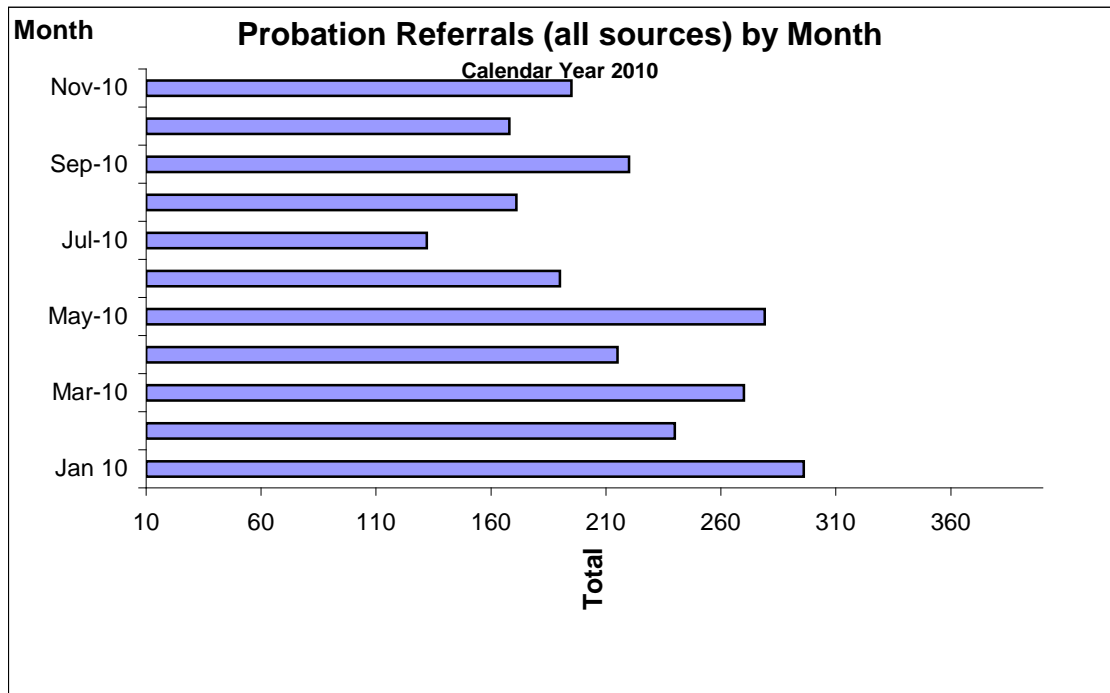
	Jan 10	Feb-10	Mar-10	Apr-10	May-09	Jun-10	Jul-10	Aug-10	Sep-09	Oct-10	Nov-10	Dec-10
Admissions	1	1	4	2	3	0	2	4	5	2	5	
Avg. Daily Pop.	11	12	13	12	13	13	14	14	16	18	18	



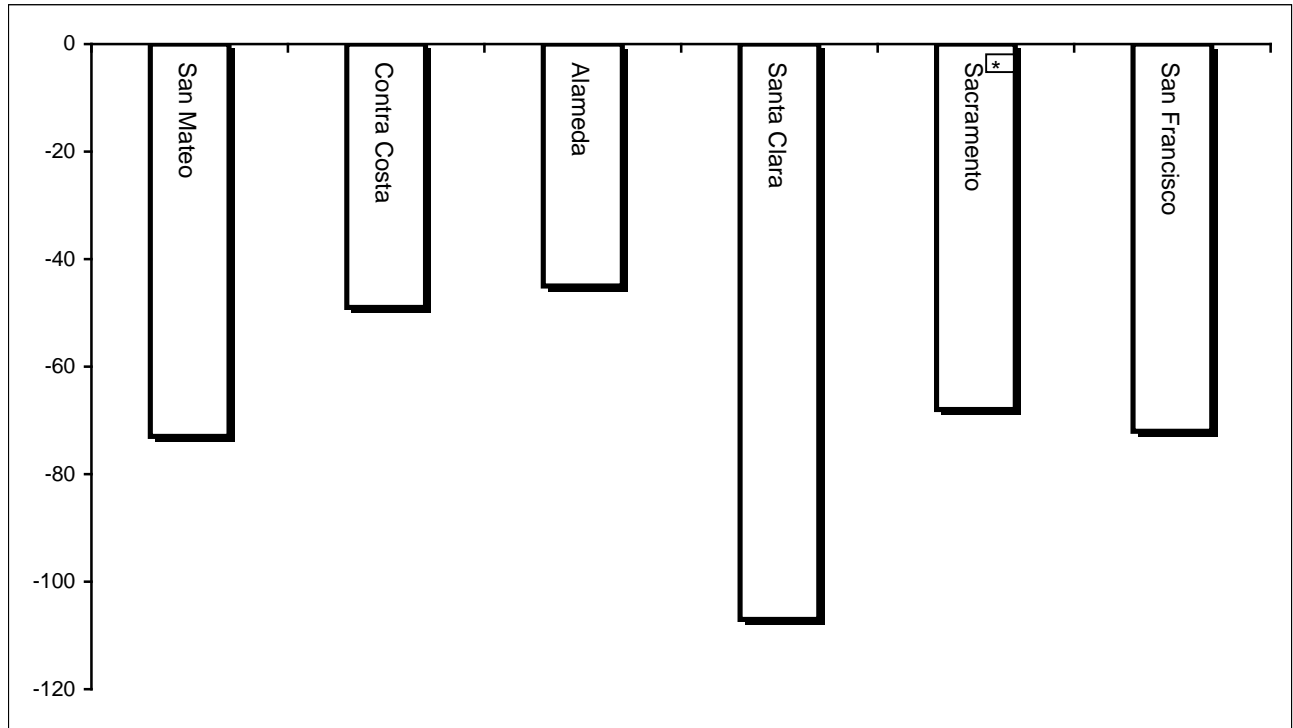
## Probation Referrals by Month Calendar Year 2010

### Probation Referrals (all sources) by Month (602 W&I)

Jan 10	296
Feb-10	240
Mar-10	270
Apr-10	215
May-10	279
Jun-10	190
Jul-10	132
Aug-10	171
Sep-10	220
Oct-10	168
Nov-10	195
Dec-10	



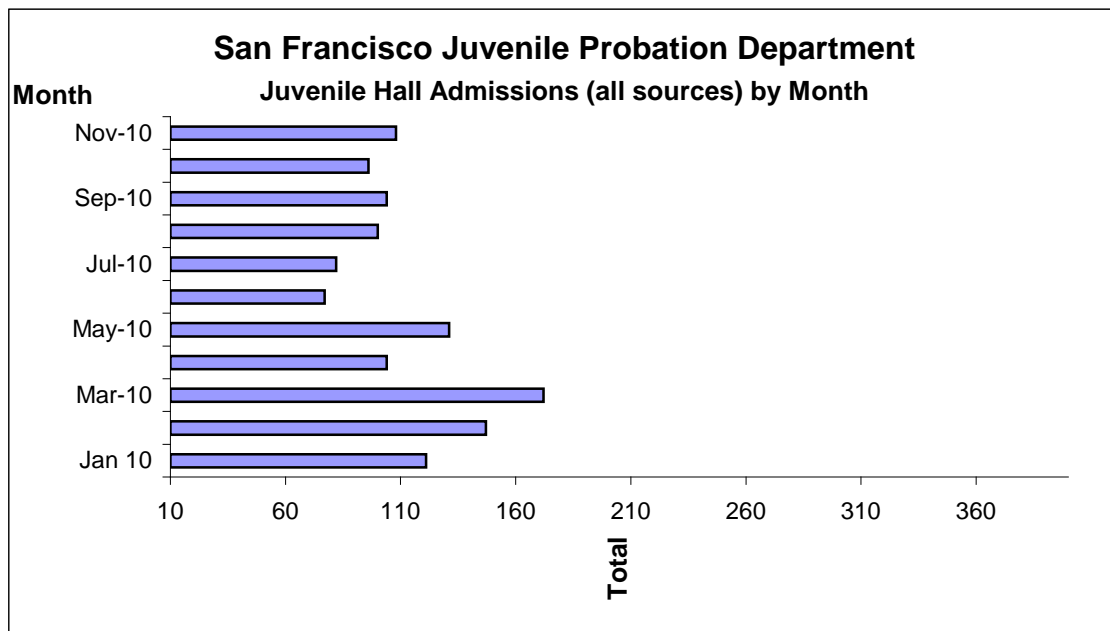
**Bay Area Resident Juvenile Hall Comparison  
Over/Under Capacity**  
on October 29<sup>th</sup>, 2010



	Rated Capacity	Actual	Over/Under Capacity
San Mateo	180	108	-73
Contra Costa	240	185	-49
Alameda	280	187	-45
Santa Clara	360	258	-107
Sacramento	308	274	-68
San Francisco	150	87	-72

## Juvenile Hall Admissions by Month Calendar Year 2010

Jan 10	121
Feb-10	147
Mar-10	172
Apr-10	104
May-10	131
Jun-09	77
Jul-10	82
Aug-10	100
Sep-10	104
Oct-10	96
Nov-10	108
Dec-10	



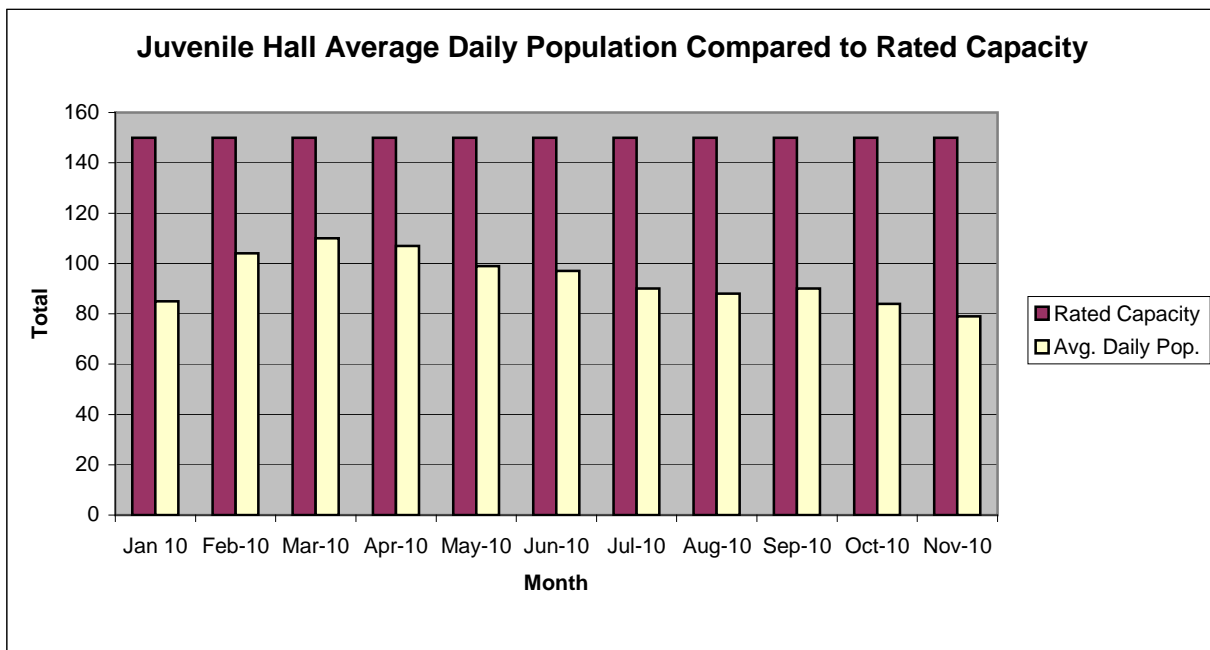


### Characteristics of Juvenile Hall Detainees on November 30<sup>th</sup>, 2010

Detention Reason	Offense Code	MFI	Count	%
KIDNAP TO COMMIT ROBBERY/RAPE/289 PC/ETC	209 (B)(1) PC	F	1	1.15%
CONTINUOUS SEXUAL ABUSE OF CHILD	288.5(A) PC	F	1	1.15%
ATTEMPTED MURDER	664 /187 (A) PC	F	2	2.30%
SHOOT AT INHABITED DWELLING/VEHICLE/ETC	246 PC	F	2	2.30%
ROBBERY	211 PC	F	13	14.94%
POSSESS/PURCHASE COCAINE BASE FOR SALE	11351.5 HS	F	1	1.15%
VEHICLE MANSLAUGHTER W/GROSS NEGLIGENCE	192 (C)(1) PC	F	1	1.15%
BURGLARY	459 PC	F	1	1.15%
FORCE OR ADW NOT FIREARM:GBI LIKELY	245 (A)(1) PC	F	6	6.90%
POSSESS CONTROLLED SUBSTANCE FOR SALE	11378 HS	F	1	1.15%
FELON/ADDICT/ETC POSSESS FIREARM	12021 (A)(1) PC	F	1	1.15%
CARRY CONCEALED WEAPON WHILE ENGAGED IN CRIMINAL STREET GANG	12025 (B)(3) PC	F	1	1.15%
ARSON:PROPERTY	451 (D) PC	F	1	1.15%
WILLFUL DISCHARGE FIREARM IN NEGLIGENT MANNER	246.3 PC	F	1	1.15%
THREATEN SCHOOL/PUBLIC OFFICER/EMPLOYEE	71 PC	F	1	1.15%
VIOLATE CIVIL RIGHTS:CAUSE VIOLENT INJURY/ETC	422.7(A) PC	F	1	1.15%
GRAND THEFT:MONEY/LABOR/PROPERTY OVER \$400	487 (A) PC	F	1	1.15%
TAKE VEHICLE W/O OWNER'S CONSENT/VEHICLE THEFT	10851 (A) VC	F	4	4.60%
RECEIVE/ETC KNOWN STOLEN PROPERTY	496 (A) PC	F	4	4.60%
POSSESS MARIJUANA/HASHISH	11357 (A) HS	F	1	1.15%
CARRY CONCEALED WEAPON ON PERSON W/PRIOR CONVICTION	12025 (A)(2) PC	F	1	1.15%
BATTERY ON NONCOHABITATING FORMER SPOUSE/ETC	243 (E)(1) PC	M	1	1.15%
MINOR ATTEMPT ESCAPE/ESCAPE COUNTY FACILITY	871 (A) WI	M	1	1.15%
VANDALISM (\$400 OR MORE)	594 (B)(1) PC	M	1	1.15%
BATTERY	242 PC	M	2	2.30%
PETTY THEFT	484 (A) PC	M	2	2.30%
PETITION TO CHANGE/MODIFY A PREVIOUS COURT ORDER	778 WI	M	1	1.15%
FAIL TO OBEY ORDER OF JUVENILE COURT 602 WI	777 (A)(2) WI	M	10	11.49%
CHANGE OF PLACEMENT/PLACEMENT FAILURE	737 WI	M	3	3.45%
VIOLATION(S) OF HOME SUPERVISION CONDITION	628.1 WI	M	1	1.15%
BENCH WARRANT	BENCH WARRANT		3	3.45%
ARREST WARRANT	WRNT602		9	10.34%
COURT ORDER	CTORD 602		7	8.05%
		<b>Total</b>	<b>87</b>	<b>100.00%</b>
*F=Felony, M=Misdemeanor				

## San Francisco Juvenile Probation Department

	Jan 10	Feb-10	Mar-10	Apr-10	May-10	Jun-10	Jul-10	Aug-10	Sep-10	Oct-10	Nov-10	Dec-10
Rated Capacity	150	150	150	150	150	150	150	150	150	150	150	150
Avg. Daily Pop.	85	104	110	107	99	97	90	88	90	84	79	



## Juvenile Hall Average Length of Stay

For the Month of November 2010

### <sup>1</sup>Released

<b>Range of Days</b>	<i>1-10 days</i>	<i>11-20 days</i>	<i>21-30 days</i>	<i>30 or more days</i>	<b>Total</b>
# of Youth Released	49	18	8	26	101
% of Population	48.51%	17.82%	7.92%	25.74%	100%
# of Days	188	257	205	2523	3173
% of Total Days	5.92%	8.10%	6.46%	79.51%	100%
Average Length of Stay	3.84	14.28	25.63	97.04	31.42

### <sup>2</sup>In Custody

<b>Range of Days</b>	<i>1-10 days</i>	<i>11-20 days</i>	<i>21-30 days</i>	<i>30 or more days</i>	<b>Total</b>
# of Youth Detained	26	20	11	30	87
% of Population	29.89%	22.99%	12.64%	34.48%	100%
# of Days	160	309	288	3879	4636
% of Total Days	3.45%	6.67%	6.21%	83.67%	100%
Average Length of Stay	6.15	15.45	26.18	129.30	53.29

Notes: Less than one day of stay is calculated as one day.

<sup>1</sup>Length of stay is calculated according to release date for those who are released.

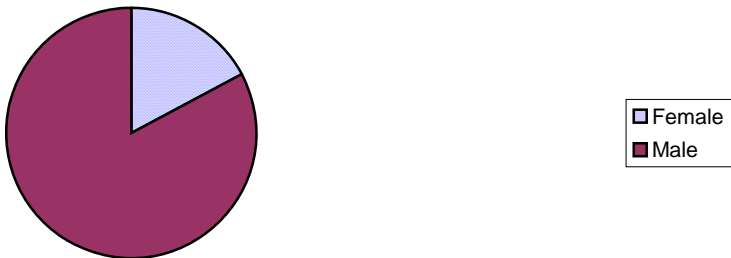
<sup>2</sup>For those still in custody, length of stay is calculated at the last day of the month.

## **Section III**

# **Demographics**

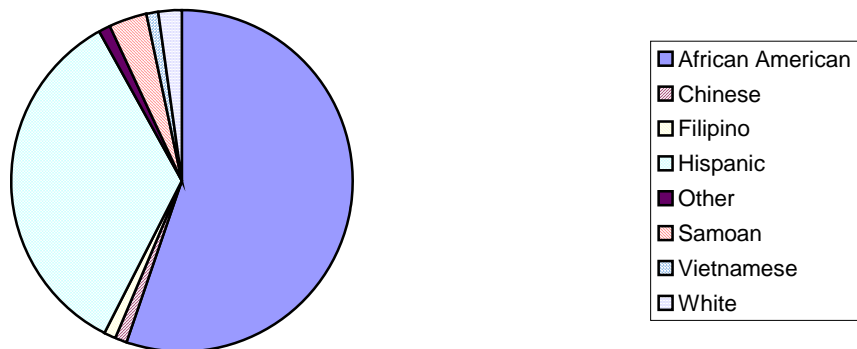
Gender	Frequency	Percent
Female	15	17.24%
Male	72	82.76%
<b>Total</b>	<b>87</b>	<b>100.00%</b>

**Demographic Characteristics  
Of Juvenile Hall Detainees on 11/30/10 by Gender**

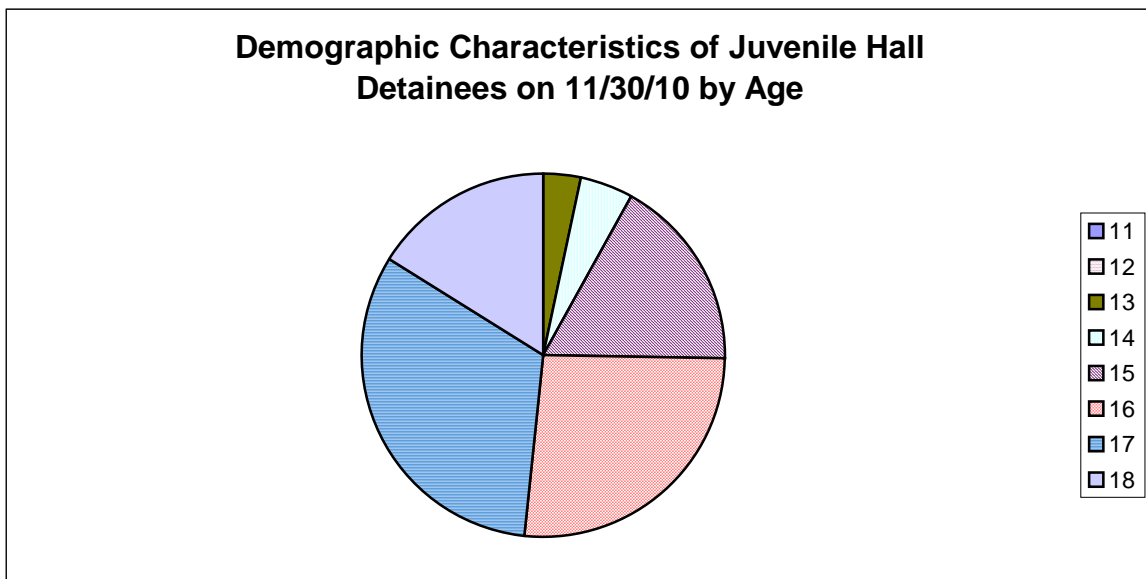


Race/Ethnic Origin	Frequency	Percent
African American	48	55.17%
Chinese	1	1.15%
Filipino	1	1.15%
Hispanic	30	34.48%
Other	1	1.15%
Samoan	3	3.45%
Vietnamese	1	1.15%
White	2	2.30%
<b>Total</b>	<b>87</b>	<b>100.00%</b>

**Demographic Characteristics of Juvenile Hall Detainees on  
11/30/10 by Race**

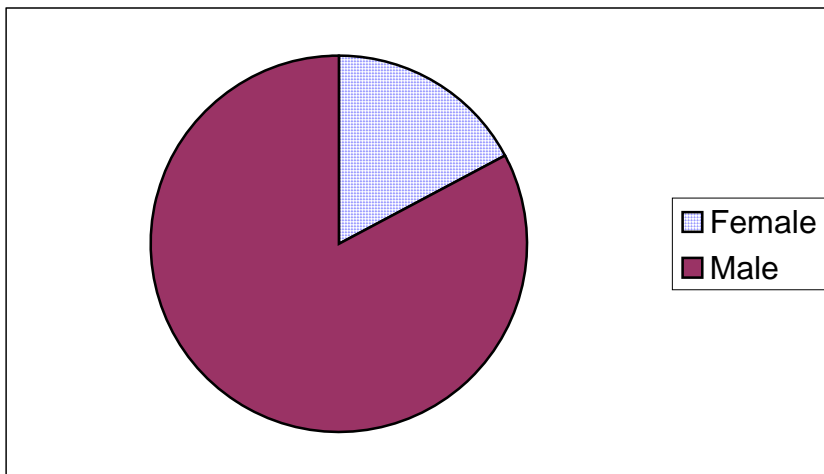


Age	Frequency	Percent
11	0	0.00%
12	0	0.00%
13	3	3.45%
14	4	4.60%
15	15	17.24%
16	23	26.44%
17	28	32.18%
18	14	16.09%
<b>Total</b>	<b>87</b>	<b>100.00%</b>



Demographic Characteristics of Juvenile Hall Detainees  
on 11/30/2010  
Age by Gender

Age	Female	Male	Total	
11	0	0	0	0.00%
12	0	0	0	0.00%
13	2	1	3	3.45%
14	2	2	4	4.60%
15	1	14	15	17.24%
16	4	19	23	26.44%
17	4	24	28	32.18%
18 and over	2	12	14	16.09%
<b>Total</b>	<b>15</b>	<b>72</b>	<b>87</b>	<b>100.00%</b>
	<b>17.24%</b>	<b>82.76%</b>	<b>100.00%</b>	



Demographic Characteristics  
Of Juvenile Hall Detainees on November 30<sup>th</sup>, 2010

---

<b>Geographic Residence of Youth</b>	<b>Count</b>	<b>%</b>
Richmond	1	1.1%
Marina	0	0.0%
North of Market/Downtown	2	2.3%
Treasure Island/Yerba Buena Island	2	2.3%
Western Addition	7	8.0%
South of Market/Tenderloin	0	0.0%
Sunset	2	2.3%
Haight Ashbury/Castro/Upper Market	0	0.0%
Inner Mission	13	14.9%
Potrero	1	1.1%
Parkside	2	2.3%
Ingleside (West of Twin Peaks)	4	4.6%
Outer Mission	18	20.7%
Bayview	24	27.6%
Non-San Francisco and Unavailable	11	12.6%
<b>Total</b>	<b>87</b>	<b>100.0%</b>

<b>Non-San Francisco and Unavailable</b>	<b>Count</b>	<b>%</b>
Antioch	1	9.1%
Daly City	2	18.2%
Hayward	1	9.1%
Oakland	1	9.1%
San Leandro	1	9.1%
Santa Rosa	2	18.2%
Unavailable	3	27.3%
<b>Total</b>	<b>11</b>	<b>100.0%</b>

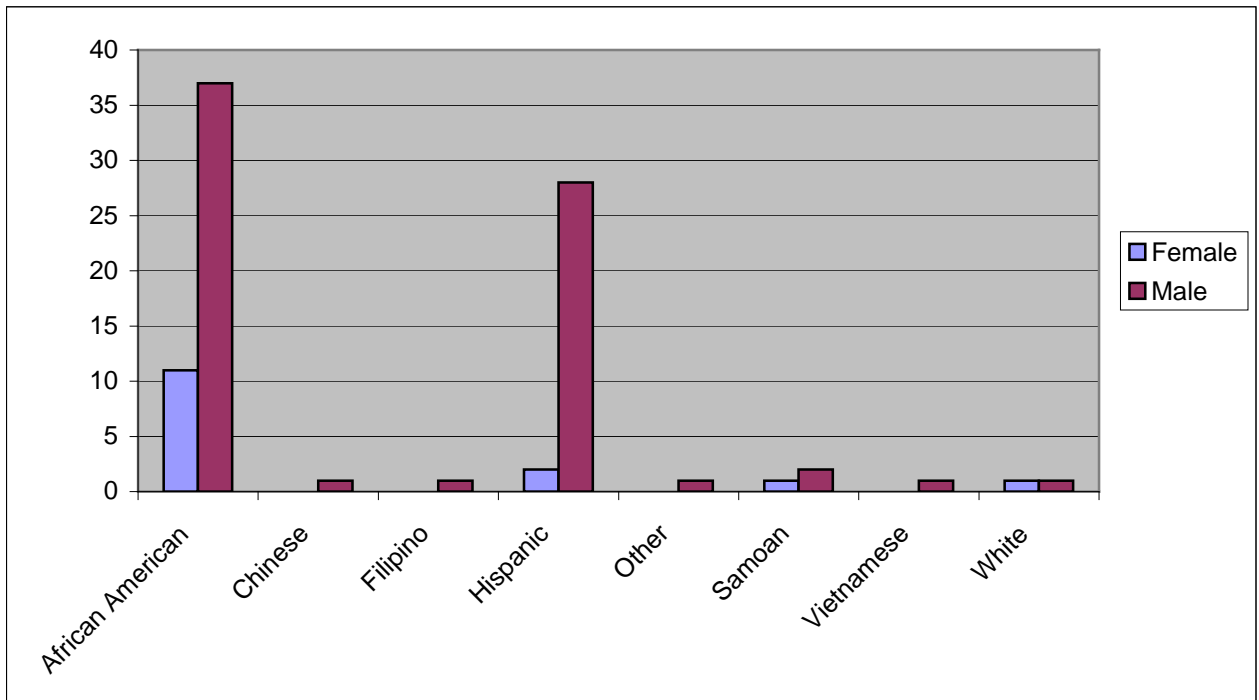


Demographic Characteristics  
Of Juvenile Hall Detainees on November 30<sup>th</sup>, 2010

---

**Race/Ethnic Origin by Gender**

Race/Ethnicity	Female	Male	Total	%
African American	11	37	48	55.2%
Chinese	0	1	1	1.1%
Filipino	0	1	1	1.1%
Hispanic	2	28	30	34.5%
Other	0	1	1	1.1%
Samoan	1	2	3	3.4%
Vietnamese	0	1	1	1.1%
White	1	1	2	2.3%
<b>Total</b>	<b>15</b>	<b>72</b>	<b>87</b>	<b>100.0%</b>

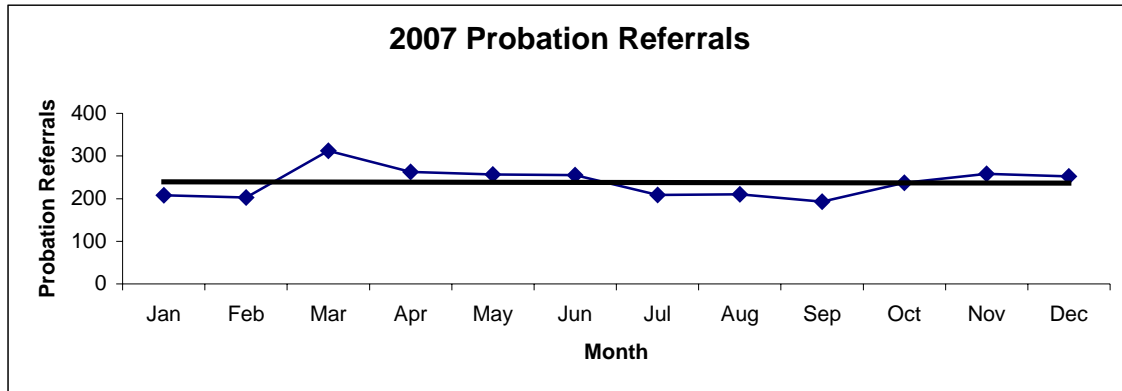


# **Section IV**

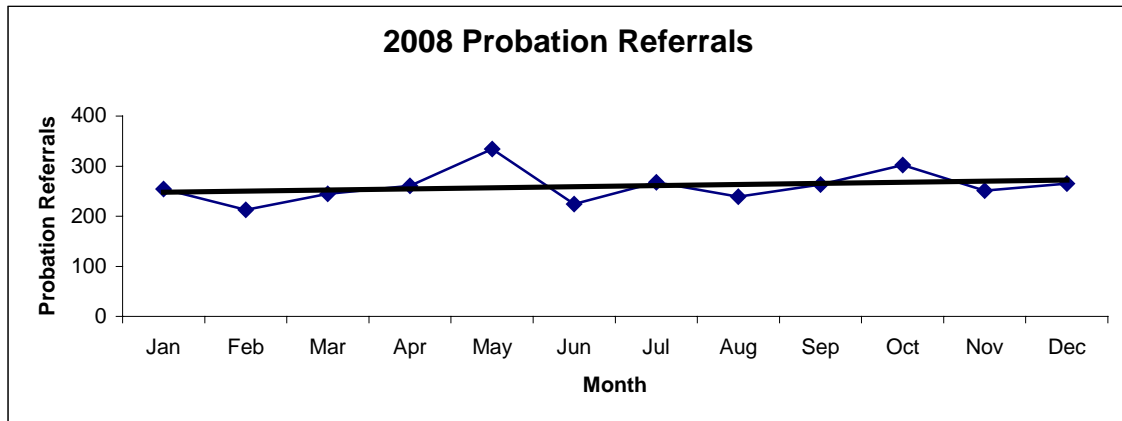
## **Historical Information**

San Francisco Juvenile Probation Department  
**Probation Referrals (all sources) By Month**  
 (2007-2009)

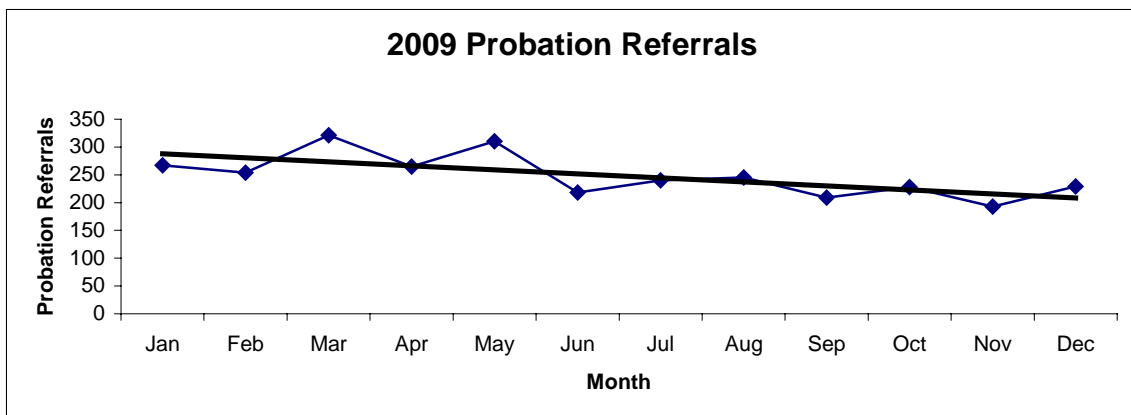
2007 Probation Referrals	Jan	Feb	Mar	Apr	May	Jun	Jul	Aug	Sep	Oct	Nov	Dec	Total
	208	203	312	263	257	255	209	210	193	237	258	252	<b>2857</b>



2008 Probation Referrals	Jan	Feb	Mar	Apr	May	Jun	Jul	Aug	Sep	Oct	Nov	Dec	Total
	254	213	245	261	334	224	268	239	263	302	251	265	<b>3119</b>

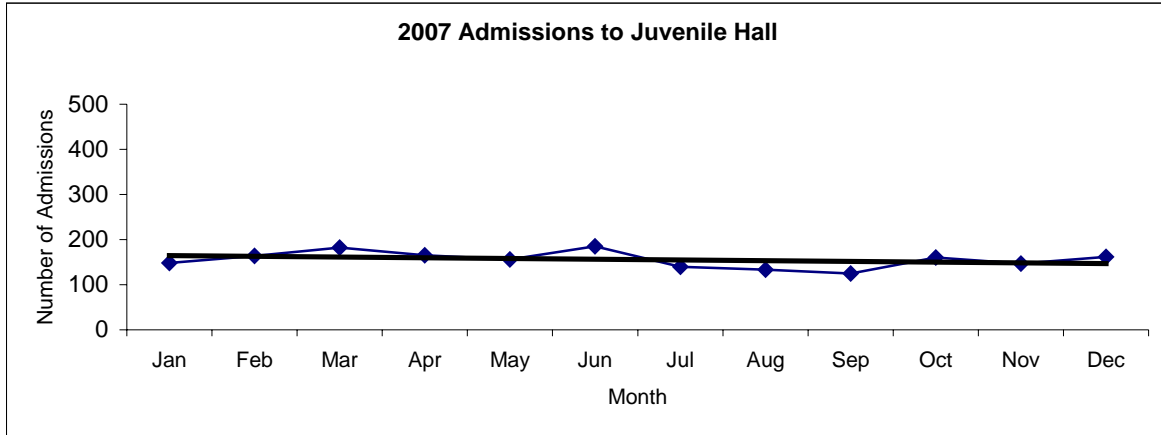


2009 Probation Referrals	Jan	Feb	Mar	Apr	May	Jun	Jul	Aug	Sep	Oct	Nov	Dec	Total
	267	254	321	265	310	218	240	245	209	228	193	229	<b>2979</b>

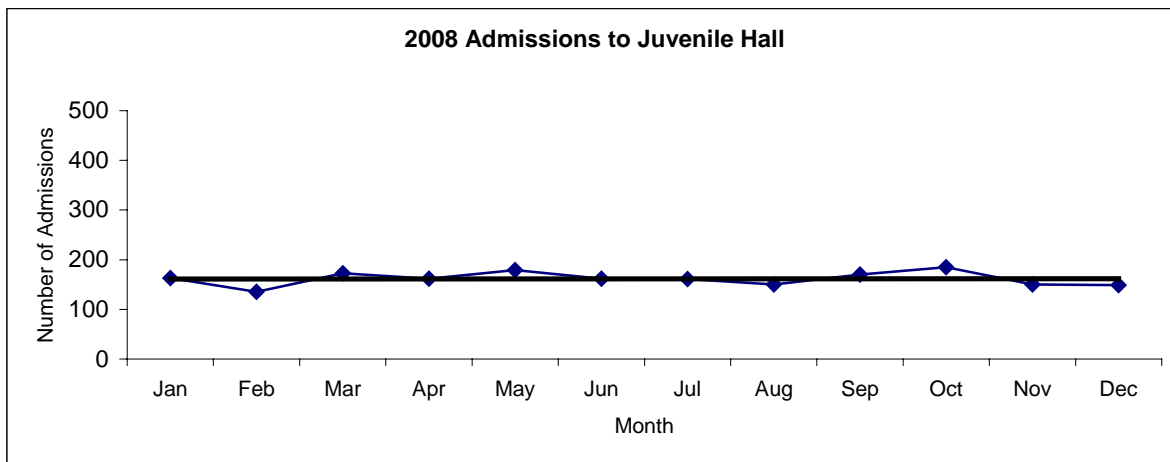


**San Francisco Juvenile Probation**  
**Juvenile Hall Admissions By Month**  
(2007-2009)

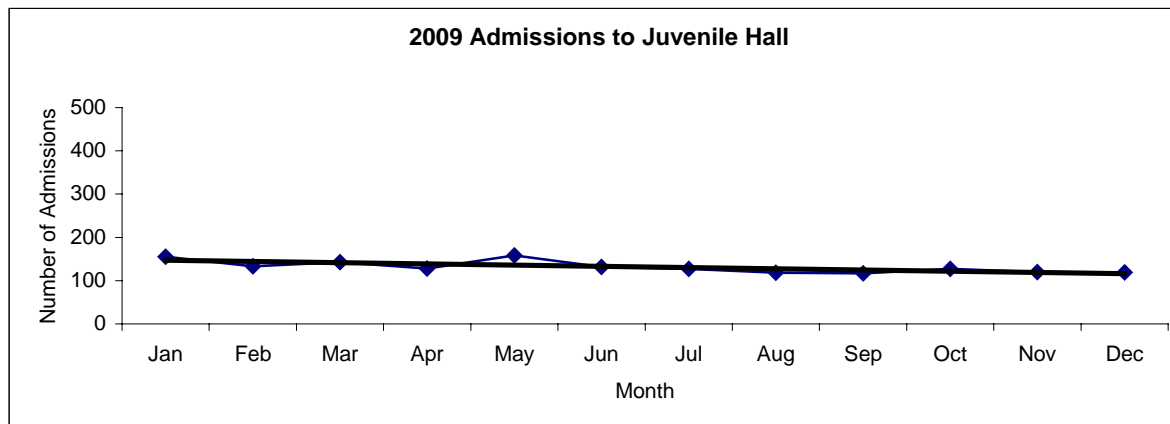
2007 Admissions	Jan	Feb	Mar	Apr	May	Jun	Jul	Aug	Sep	Oct	Nov	Dec	Total
	148	164	182	165	156	185	140	133	125	160	147	162	<b>1867</b>



2008 Admissions	Jan	Feb	Mar	Apr	May	Jun	Jul	Aug	Sep	Oct	Nov	Dec	Total
	163	135	173	162	179	162	161	150	170	185	150	149	<b>1939</b>

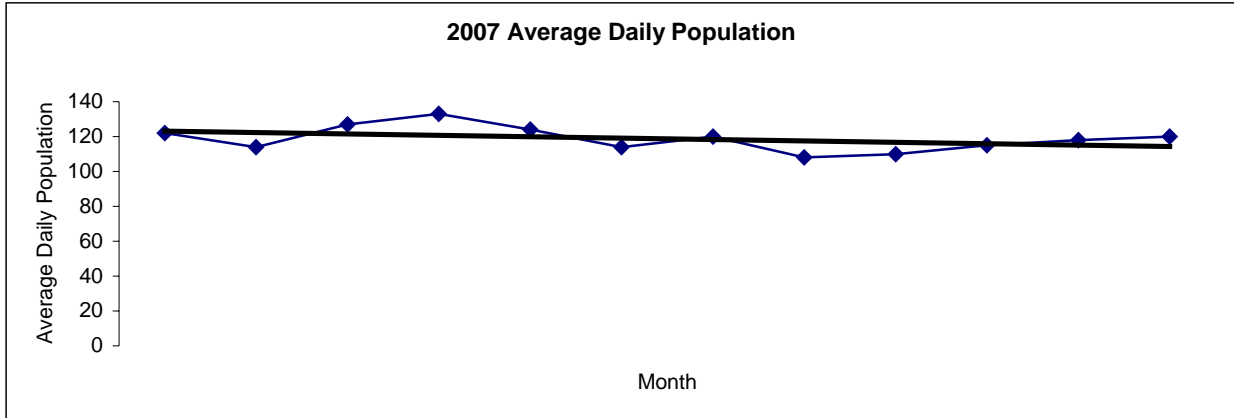


2009 Admissions	Jan	Feb	Mar	Apr	May	Jun	Jul	Aug	Sep	Oct	Nov	Dec	Total
	155	133	143	128	158	132	127	118	117	127	120	119	<b>1577</b>

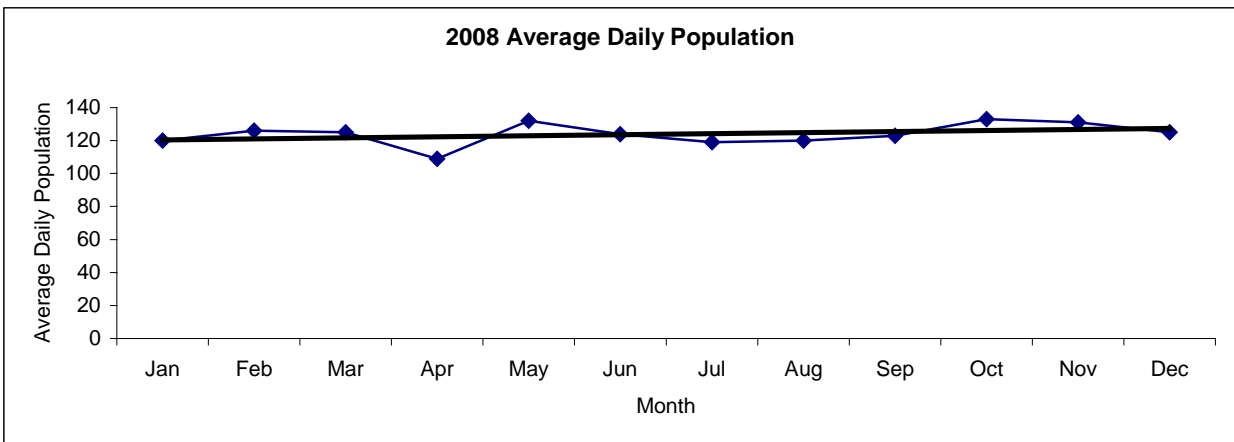


San Francisco Juvenile Probation  
**Juvenile Hall Average Daily Population By Month**  
 (2007-2009)

2007 Avg. Daily Pop.	Jan	Feb	Mar	Apr	May	Jun	Jul	Aug	Sep	Oct	Nov	Dec	Total
	122	114	127	133	124	114	120	108	110	115	118	120	<b>119</b>



2008 Avg. Daily Pop.	Jan	Feb	Mar	Apr	May	Jun	Jul	Aug	Sep	Oct	Nov	Dec	Total
	120	126	125	109	132	124	119	120	123	133	131	125	<b>114</b>



2009 Avg. Daily Pop.	Jan	Feb	Mar	Apr	May	Jun	Jul	Aug	Sep	Oct	Nov	Dec	Total
	107	119	117	127	127	114	112	108	105	101	95	77	<b>109</b>

