

# City and County of San Francisco



Juvenile Probation Department

---

## **Monthly Report for February 2011**

Presented to the Juvenile Probation Commission

March 9<sup>th</sup>, 2011

William P. Siffermann  
Chief Probation Officer

Prepared by Jose Luis Perla  
Information Technology Director  
(415) 753-7686  
[jose.perla@sfgov.org](mailto:jose.perla@sfgov.org)

# Table of Contents

---

## Section I Summary Reports

Juvenile Hall, Log Cabin Ranch Summary Statistics .....	1
Probation Services Summary and California Youth Authority Statistics .....	2
Active Cases by Units .....	3

## Section II Current Month General Detail

Probation Referrals, Juvenile Admissions And Average Daily Population .....	4
Juvenile Hall Admissions and Average Daily Population .....	5
Commitments to out-of-home placement .....	6
Commitments to California Youth Authority .....	7
Log Cabin Ranch Admissions and Average Daily Population .....	8
Probation Referrals .....	9
Juvenile Hall And Log Cabin Ranch Incident Report .....	10
Bay Area Resident Juvenile Hall Comparison .....	11
Juvenile Hall Admissions .....	12
Juvenile Hall Detainees by Detention Reason .....	13
Juvenile Hall Average Daily Population by Rated Capacity .....	14
Juvenile Hall Average Length of Stay .....	15

## Section III Demographics

Juvenile Hall Detainees by Sex and Race/Ethnic Origin .....	16
Juvenile Hall Detainees by Age .....	17
Juvenile Hall Detainees by Age and Sex .....	18
Juvenile Hall Detainees by Geographic Residence of Youth .....	19
Juvenile Hall Detainees by Race/Ethnic Origin and Sex .....	20

## **Section IV**

### **Historical Information**

2008-2010 Probation Referrals .....	21
2008-2010 Juvenile Hall Admissions .....	22
2008-2010 Juvenile Hall Average Daily Population .....	23

---

# **Section I**

## **Summary Reports**

## Summary Report for the Month of February 2011

<b>Juvenile Hall</b>	<i>January 2010</i>	<i>January 2011</i>	<i>February 2010</i>	<i>February 2011</i>	<i>YTD 2010</i>	<i>YTD 2011</i>
Admissions	121	120	147	78	268	198
Average Daily Population	85	91	104	97	94	94
Average Length of Stay (Releases)	19.20	32.10	15.61	29.16	17.41	30.63
Average Length of Stay (In Custody)	56.41	46.46	50.22	51.76	53.32	49.11
Releases	117	105	114	85	231	190
<b>Log Cabin Ranch</b>						
Admissions:						
First Time Commitments	1	1	1	1	2	2
Recommitments	0	0	0	0	0	0
<i>Total</i>	<b>1</b>	<b>1</b>	<b>1</b>	<b>1</b>	<b>2</b>	<b>2</b>
Releases:						
Graduated	3	3	0	0	3	3
Escape	0	0	0	0	0	0
Other releases	0	0	0	0	0	0
<i>Total</i>	<b>3</b>	<b>3</b>	<b>0</b>	<b>0</b>	<b>3</b>	<b>3</b>
Average Daily Population	11	22	12	22	11	22

## Summary Report for the Month of February 2011

<b>Probation Services</b>	<i>January 2011</i>	<i>February 2011</i>	<i>Year To Date 2011</i>
Probation Referrals	204	138	342
Total Petitions including violation of probation	109	148	257
Selected Court Dispositions:			
California Youth Authority	0	0	0
Log Cabin Ranch	1	1	2
Out of Home Placement	10	19	29
Ward Probation	17	34	51
Non-Ward Probation (725a WI)	5	5	10
Informal Probation (654 WI)	21	8	29
Violation of Probation Petitions Filed	17	8	25
<b>California Youth Authority Monthly Count</b> <b>San Francisco County Juvenile Court Cases</b> February 28 <sup>th</sup> , 2011			
Category	Institutions	Parole	
<b>Males</b>			
White	0	1	
Hispanic	0	2	
African American	6	6	
Asian	0	0	
Native American	0	0	
Filipino	0	0	
Pacific Islander	1	0	
Other	0	0	
<b>Total</b>	<b>7</b>	<b>9</b>	
<b>Females</b>			
White	0	0	
Hispanic	0	1	
African American	0	1	
Asian	0	0	
Native American	0	0	
Filipino	0	0	
Pacific Islander	0	0	
Other	0	0	
<b>Total</b>	<b>0</b>	<b>2</b>	
<b>Grand Total</b>	<b>7</b>	<b>11</b>	

## Summary Report for the Month of February 2011

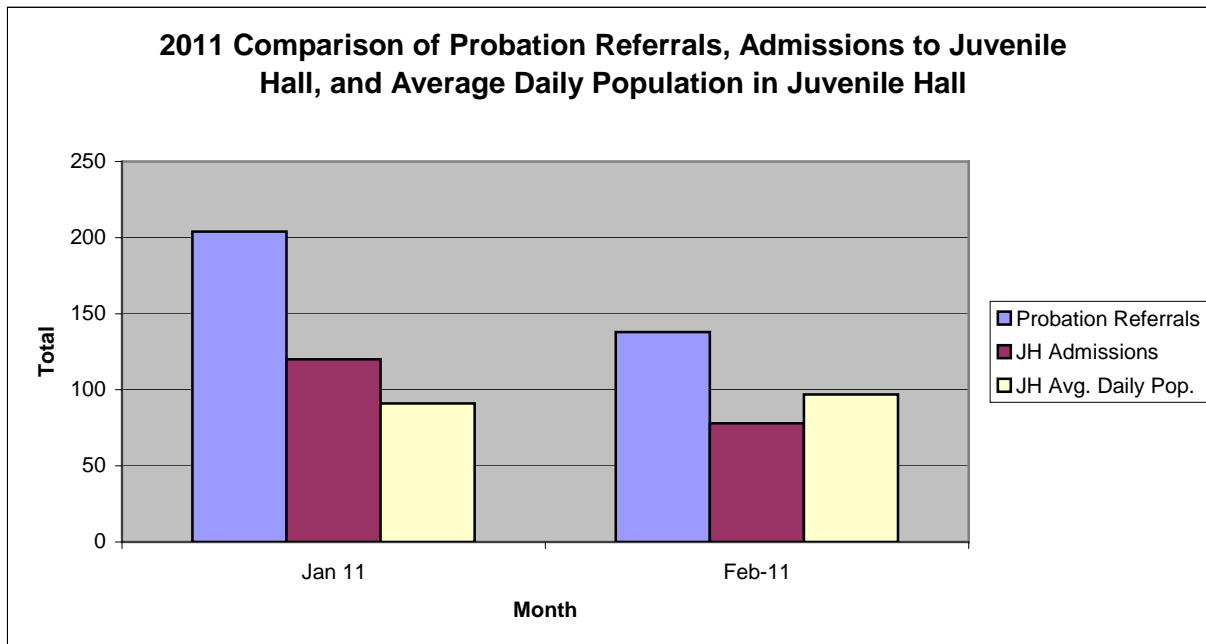
<b>Probation Services</b>			
<b>Active Cases by Units</b>	January 2011	February 2011	February Average # Youth by PO
CARC	186	173	173
Intake Green (Custody Screening Investigation)	116	114	14
Intake Gold (Probation Services 1)	183	168	24
Probation Services 2	211	215	21
Probation Services 3	196	213	21
Probation Services 4	179	186	23
Special Services	11	10	2
<i>Total</i>	<b>1,082</b>	<b>1,079</b>	<b>39</b>
Total Active Intake Cases	490	465	
Total Probation/Supervision Cases	592	614	

**Section II**  
**Current Month**  
**General Detail**



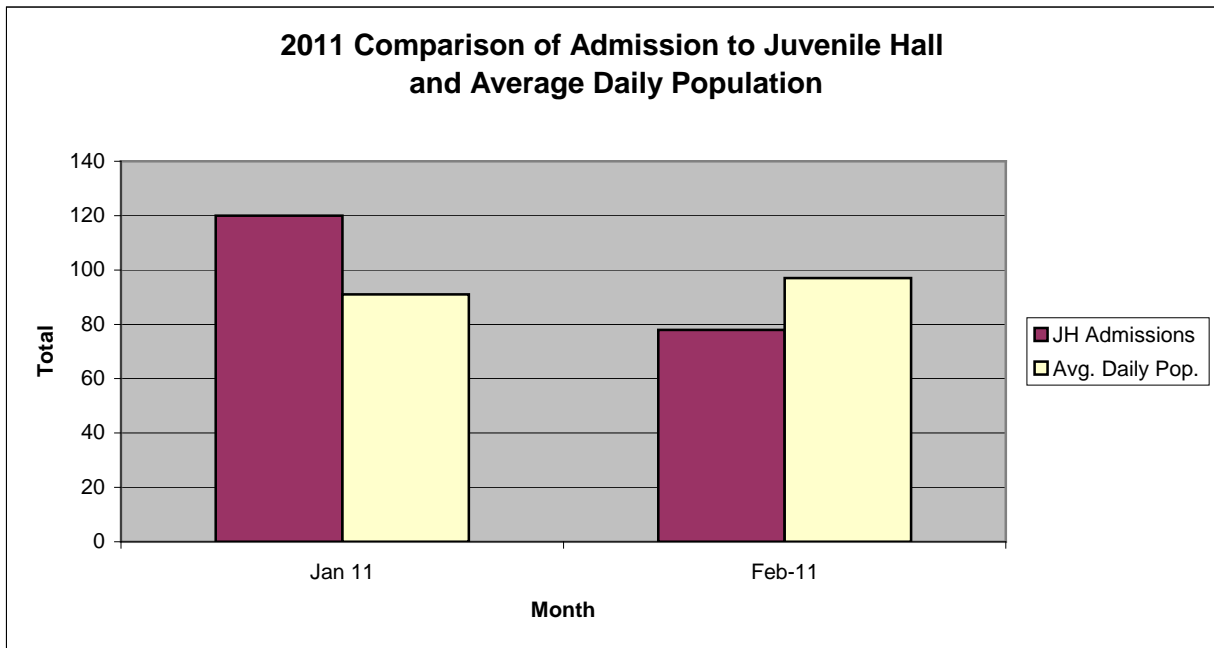
## San Francisco Juvenile Probation Department

	Jan 11	Feb-11	Mar-11	Apr-11	May-11	Jun-11	Jul-11	Aug-11	Sep-11	Oct-11	Nov-11	Dec-11
Probation Referrals	204	138										
JH Admissions	120	78										
JH Avg. Daily Pop.	91	97										



## San Francisco Juvenile Probation Department

	Jan 11	Feb-11	Mar-11	Apr-11	May-11	Jun-11	Jul-11	Aug-11	Sep-11	Oct-11	Nov-11	Dec-11
JH Admissions	120	78										
Avg. Daily Pop.	91	97										

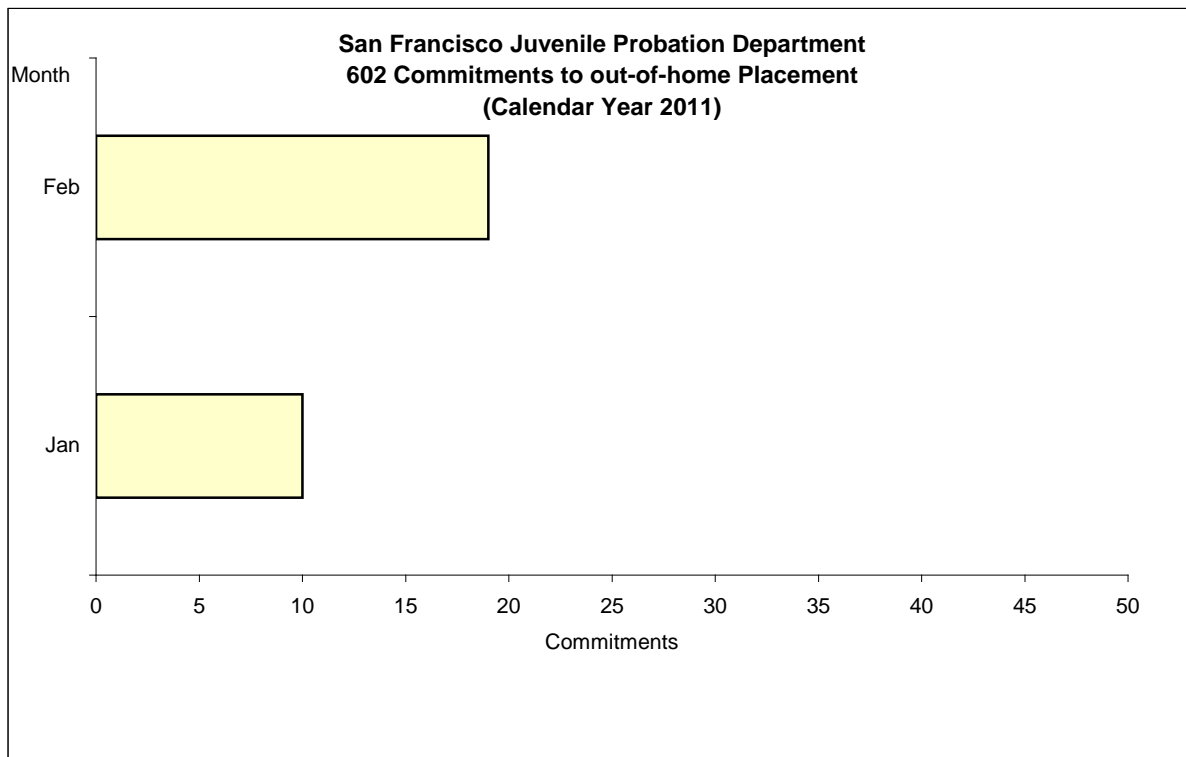


# Out-of-Home Placement<sup>1</sup>

## Commitments of 602's

### Calendar Year 2011

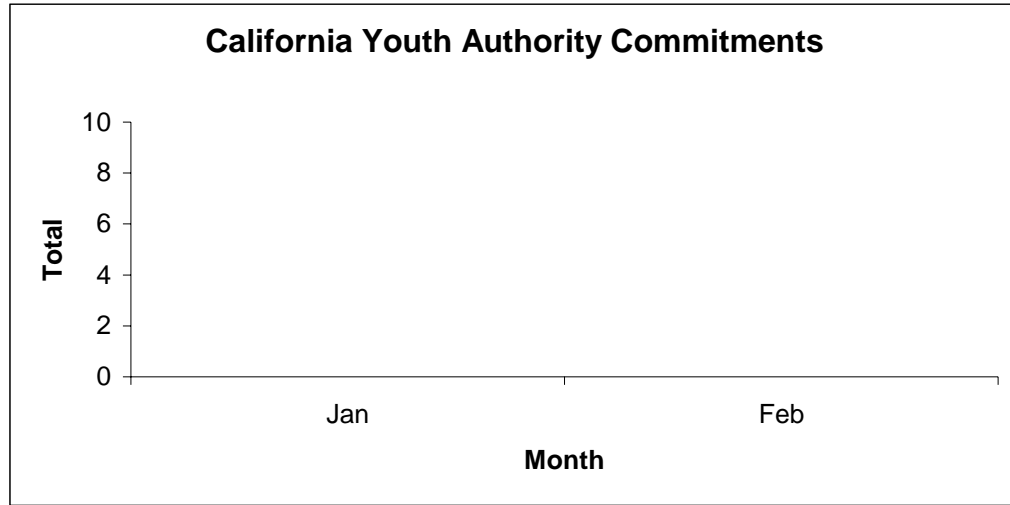
<b>Commitments</b>	<b>Jan</b>	<b>Feb</b>	<b>Mar</b>	<b>Apr</b>	<b>May</b>	<b>Jun</b>	<b>Jul</b>	<b>Aug</b>	<b>Sep</b>	<b>Oct</b>	<b>Nov</b>	<b>Dec</b>	<b>Total</b>
2011	10	19											29



<sup>1</sup> This report is based on 602 Commitments to out-of-home placements. If there is a 601 commitment, it will show as a footnote here. Figures are regularly updated to include reports from previous reporting periods.

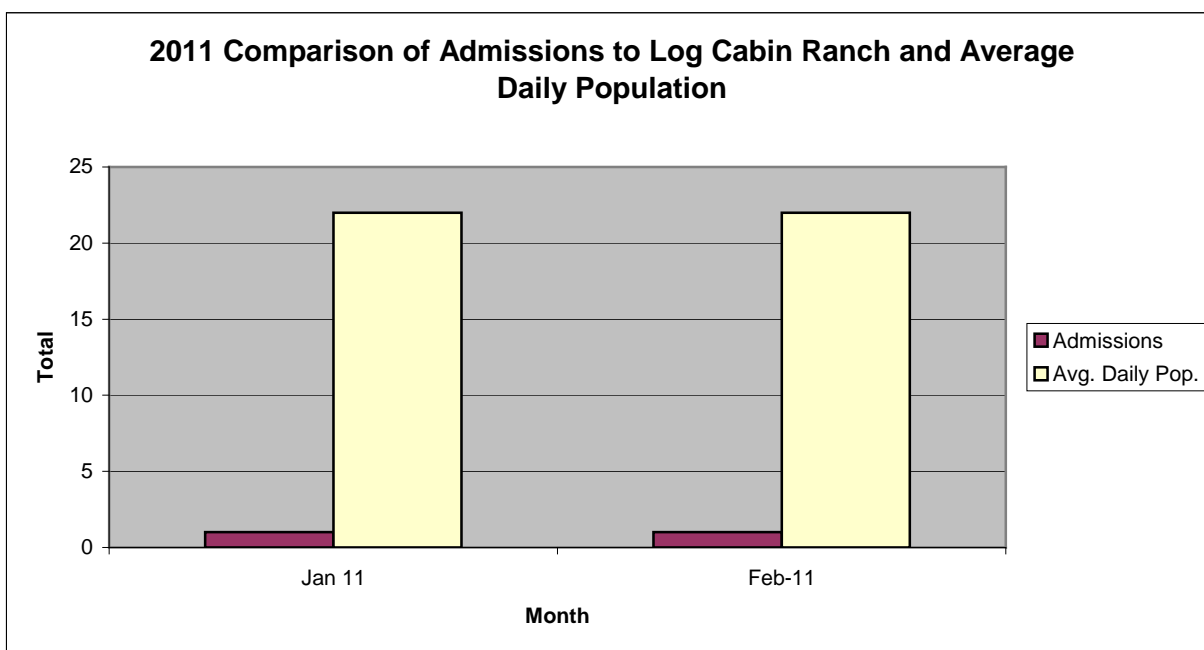
California Youth Authority  
Commitments  
(Calendar Year 2011)

Commitments	Jan	Feb	Mar	Apr	May	Jun	Jul	Aug	Sep	Oct	Nov	Dec	Total
2011	0	0											0



## San Francisco Juvenile Probation Department

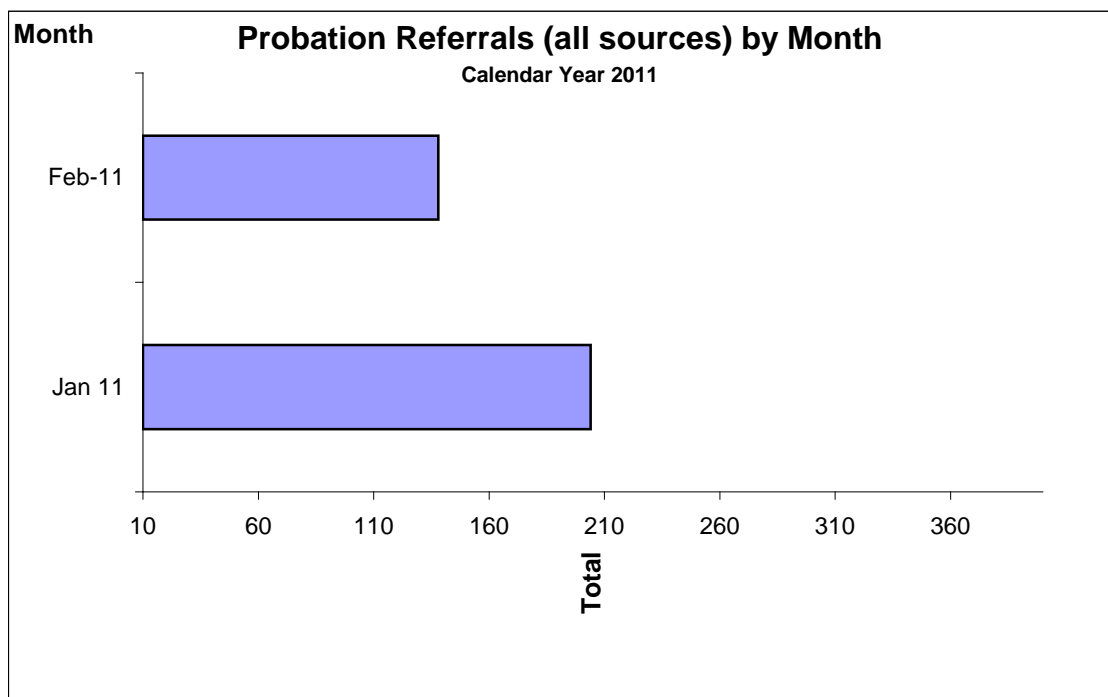
	Jan 11	Feb-11	Mar-11	Apr-11	May-11	Jun-11	Jul-11	Aug-11	Sep-11	Oct-11	Nov-11	Dec-11
Admissions	1	1										
Avg. Daily Pop.	22	22										



## Probation Referrals by Month Calendar Year 2011

### Probation Referrals (all sources) by Month (602 W&I)

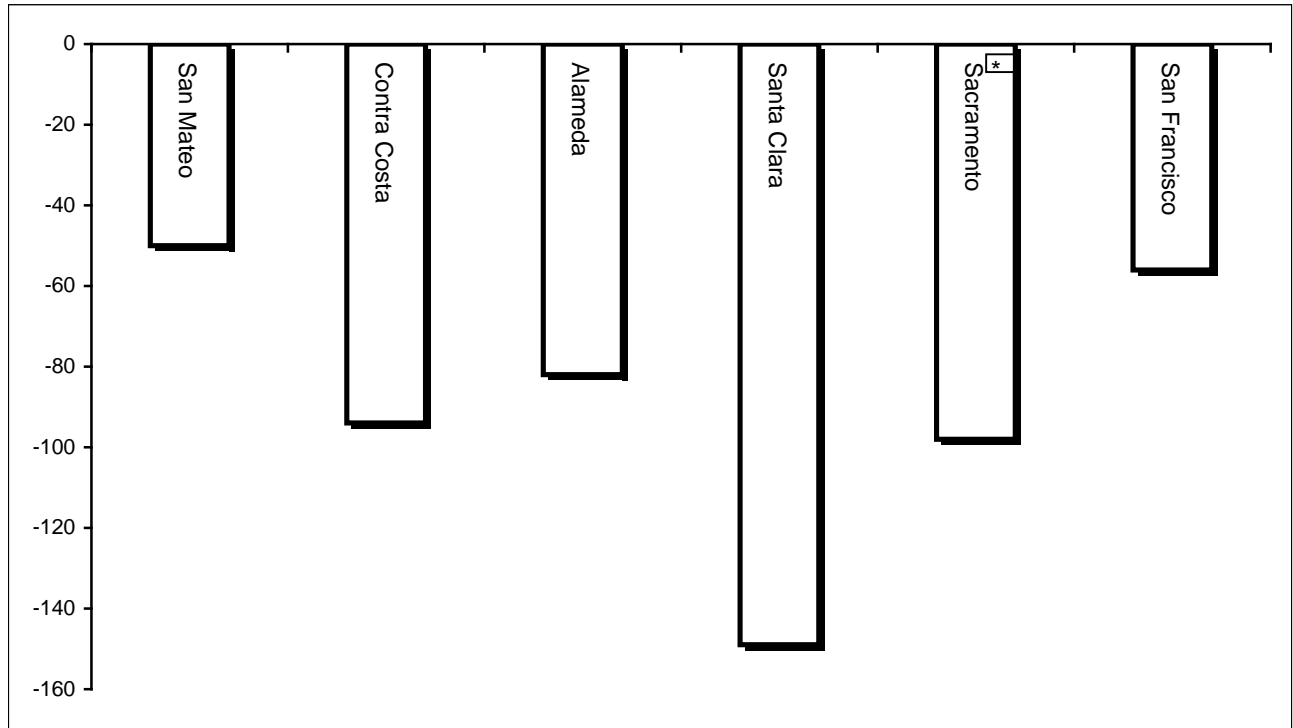
Jan 11	204
Feb-11	138
Mar-11	
Apr-11	
May-11	
Jun-11	
Jul-11	
Aug-11	
Sep-11	
Oct-11	
Nov-11	
Dec-11	



San Francisco Juvenile Probation Department  
Monthly Incident Report Form  
February 2011

<b>Juvenile Hall</b>	Assault on Staff	Fight	Attempted Escape	Fire	Attempted Suicide	Serious Contraband (Weapon illegal drug)	Use of Restraints	Self-Inflicted Injury	Assault on Staff with Injury	Fight with Injury
	<b>1</b>	<b>5</b>	<b>0</b>	<b>0</b>	<b>0</b>	<b>0</b>	<b>8</b>	<b>0</b>	<b>2</b>	<b>0</b>
	Escape	Death	Suicide	Property Damage	Use of Force					
	<b>0</b>	<b>0</b>	<b>0</b>	<b>0</b>	<b>0</b>					
<b>Log Cabin Ranch</b>	Battery on Staff	Injury to Staff due to Restraint of Minor	Fight	Battery Youth on Youth	Attempted Escape	AWOL	Attempted Suicide	Serious Contraband	Battery on Staff with Injury	Fire
	<b>0</b>	<b>1</b>	<b>2</b>	<b>1</b>	<b>0</b>	<b>0</b>	<b>0</b>	<b>0</b>	<b>0</b>	<b>0</b>
	Fight With Injury	Battery Youth on Youth with Injury	Escape	Death	Suicide	Major Property Destruction				
	<b>0</b>	<b>0</b>	<b>0</b>	<b>0</b>	<b>0</b>	<b>0</b>				

Bay Area Resident Juvenile Hall Comparison  
Over/Under Capacity  
on March 1<sup>st</sup>, 2011

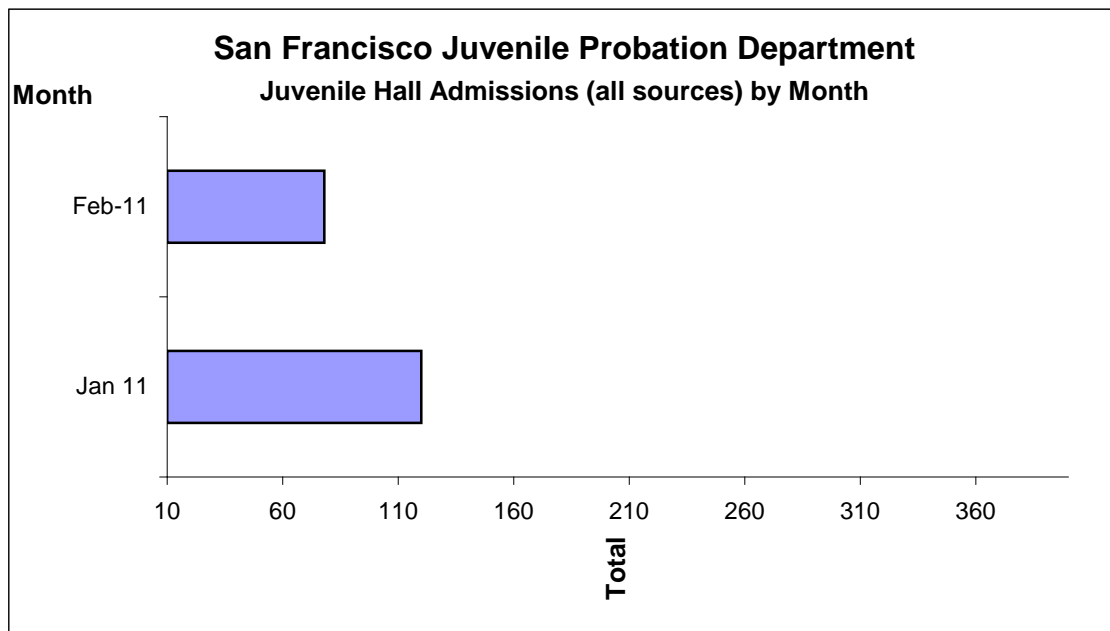


	Rated Capacity	Actual	Over/Under Capacity
San Mateo	180	130	-50
Contra Costa	240	146	-94
Alameda	280	198	-82
Santa Clara	360	211	-149
Sacramento	308	210	-98
San Francisco	150	94	-56



## Juvenile Hall Admissions by Month Calendar Year 2011

Jan 11	120
Feb-11	78
Mar-11	
Apr-11	
May-11	
Jun-11	
Jul-11	
Aug-11	
Sep-11	
Oct-11	
Nov-11	
Dec-11	

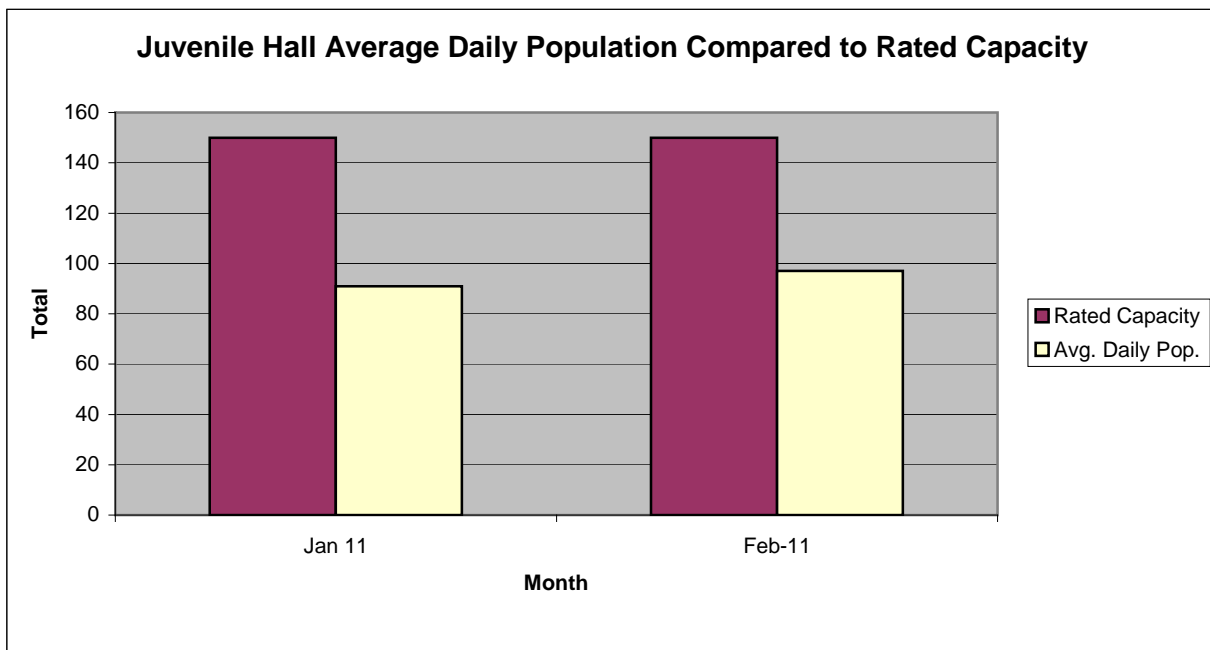


**Characteristics of Juvenile Hall Detainees on February 28th, 2011**

Detention Reason	Offense Code	MFI	Count	%
MURDER	187 (A) PC	F	2	2.11%
ATTEMPTED MURDER	664 /187 (A) PC	F	6	6.32%
RAPE:VICTIM INCAPABLE OF GIVING CONSENT	261 (A)(1) PC	F	1	1.05%
ORAL COPULATION WITH PERSON UNDER 14/ETC OR BY FORCE/ETC	288 A (C) PC	F	1	1.05%
ROBBERY	211 PC	F	26	27.37%
ROBBERY	212.5 PC	F	1	1.05%
TRANSPORT/SELL NARCOTIC/CONTROLLED SUBSTANCE	11352 (A) HS	F	3	3.16%
BURGLARY	459 PC	F	1	1.05%
BURGLARY:FIRST DEGREE	459 PC	F	1	1.05%
WILLFUL CRUELTY TO CHILD:POSSIBLE INJURY/DEATH	273 A (A) PC	F	1	1.05%
POSSESS SPECIFIED CONTROLLED SUBSTANCE AND LOADED FIREARM	11370.1 HS	F	2	2.11%
ASSAULT WITH FIREARM ON PERSON	245 (A)(2) PC	F	1	1.05%
ASSAULT:DEADLY WEAPON OR FORCE:POSSIBLE GREAT BODILY INJ	245 (A) PC	F	1	1.05%
FORCE OR ADW NOT FIREARM:GBI LIKELY	245 (A)(1) PC	F	9	9.47%
BATTERY W/SERIOUS BODILY INJURY	243 (D) PC	F	2	2.11%
CONVICTED PERSON POSSESS/ETC FIREARM	12021 (B) PC	F	1	1.05%
CARRY CONCEALED WEAPON WHILE ENGAGED IN CRIMINAL STREET GANG	12025 (B)(3) PC	F	2	2.11%
BURGLARY:SECOND DEGREE	459 PC	F	1	1.05%
GRAND THEFT FROM PERSON	487 (C) PC	F	1	1.05%
CARRY CONCEALED WEAPON ON PERSON W/PRIOR CONVICTION	12025 (A)(2) PC	F	1	1.05%
CONSPIRACY	182 (A) PC	F	1	1.05%
OBSTRUCT/RESIST/ETC PUBLIC/PEACE OFFICER/EMERGENCY MED TECH	148 (A)(1) PC	M	1	1.05%
CARRY CONCEALED WEAPON ON PERSON	12025 (A)(2) PC	M	1	1.05%
MINOR ATTEMPT ESCAPE/ESCAPE COUNTY FACILITY	871 (A) WI	M	1	1.05%
THEFT OF PERSONAL PROPERTY	484 (A) PC	M	1	1.05%
FAIL TO OBEY ORDER OF JUVENILE COURT 602 WI	777 (A)(2) WI	M	2	2.11%
CHANGE OF PLACEMENT/PLACEMENT FAILURE	737 WI	M	2	2.11%
BENCH WARRANT	BENCH WARRANT		3	3.16%
WARRANT 602	WRNT602		12	12.63%
COURT ORDER	CTORD 602		7	7.37%
*M=Misdemeanor, F=Felony		Total	95	100.00%

## San Francisco Juvenile Probation Department

	Jan 11	Feb-11	Mar-11	Apr-11	May-11	Jun-11	Jul-11	Aug-11	Sep-11	Oct-11	Nov-11	Dec-11
Rated Capacity	150	150										
Avg. Daily Pop.	91	97										



## Juvenile Hall Average Length of Stay

For the Month of February 2011

### <sup>1</sup>Released

<b>Range of Days</b>	<i>1-10 days</i>	<i>11-20 days</i>	<i>21-30 days</i>	<i>30 or more days</i>	<b>Total</b>
# of Youth Released	21	29	11	24	85
% of Population	24.71%	34.12%	12.94%	28.24%	100%
# of Days	122	408	287	1662	2479
% of Total Days	4.92%	16.46%	11.58%	67.04%	100%
Average Length of Stay	5.81	14.07	26.09	69.25	29.16

### <sup>2</sup>In Custody

<b>Range of Days</b>	<i>1-10 days</i>	<i>11-20 days</i>	<i>21-30 days</i>	<i>30 or more days</i>	<b>Total</b>
# of Youth Detained	26	10	12	47	95
% of Population	27.37%	10.53%	12.63%	49.47%	100%
# of Days	128	159	298	4332	4917
% of Total Days	2.60%	3.23%	6.06%	88.10%	100%
Average Length of Stay	4.92	15.90	24.83	92.17	51.76

Notes: Less than one day of stay is calculated as one day.

<sup>1</sup>Length of stay is calculated according to release date for those who are released.

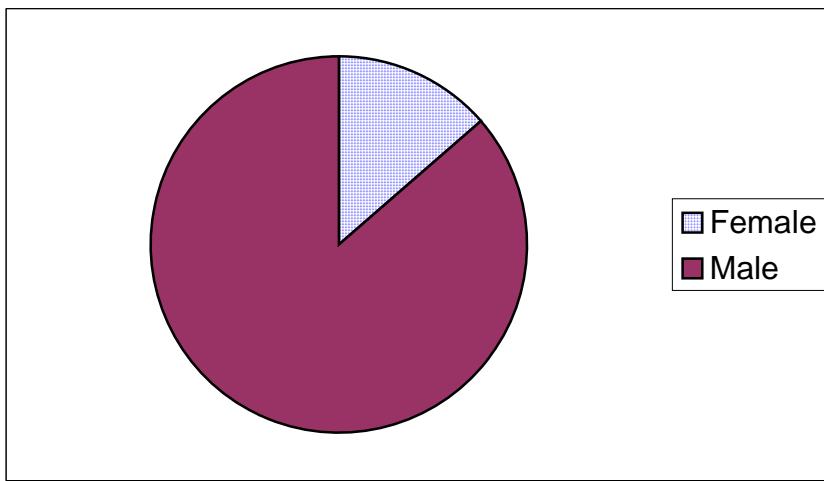
<sup>2</sup>For those still in custody, length of stay is calculated at the last day of the month.

## **Section III**

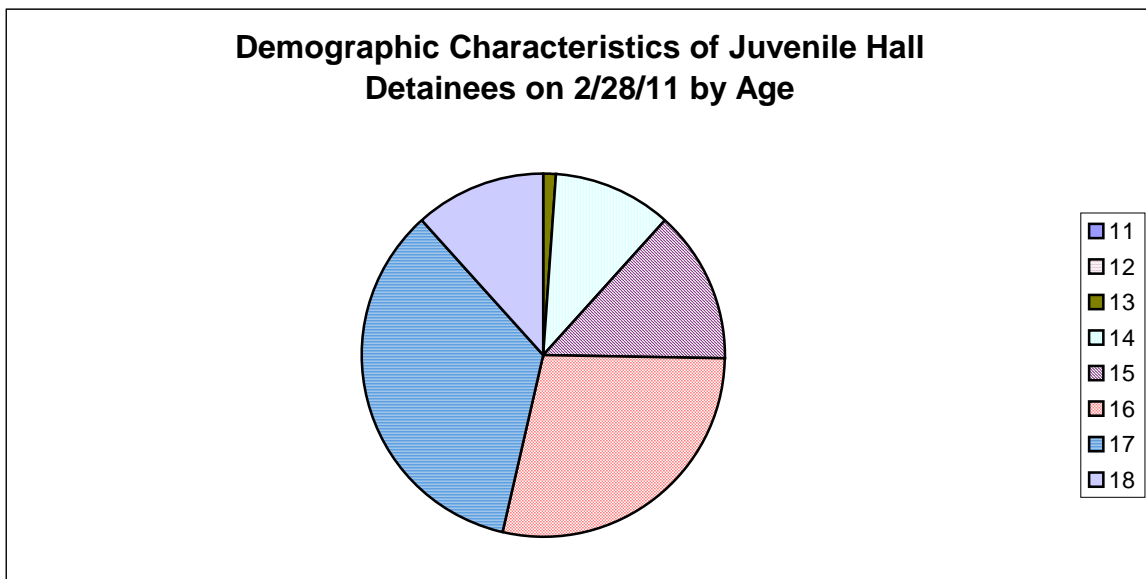
# **Demographics**

Demographic Characteristics of Juvenile Hall Detainees  
on 2/28/2011  
Age by Gender

Age	Female	Male	Total	
11	0	0	0	0.00%
12	0	0	0	0.00%
13	1	0	1	1.05%
14	4	6	10	10.53%
15	3	10	13	13.68%
16	4	23	27	28.42%
17	1	32	33	34.74%
18 and over	0	11	11	11.58%
<b>Total</b>	<b>13</b>	<b>82</b>	<b>95</b>	<b>100.00%</b>
	<b>13.68%</b>	<b>86.32%</b>	<b>100.00%</b>	

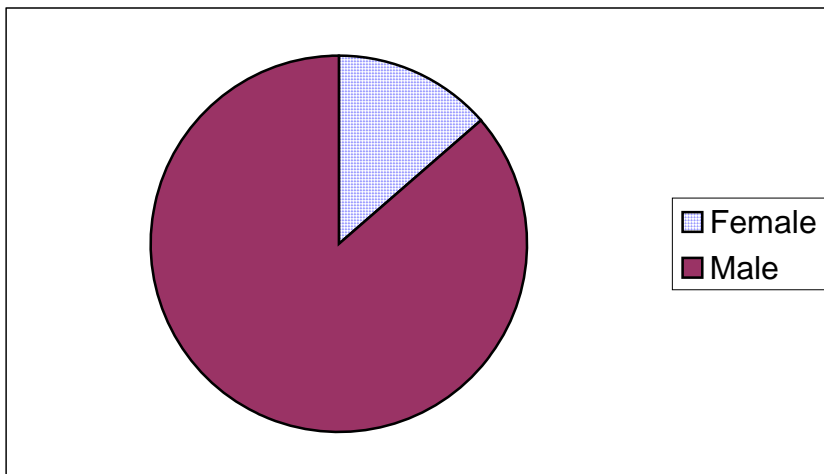


Age	Frequency	Percent
11	0	0.00%
12	0	0.00%
13	1	1.05%
14	10	10.53%
15	13	13.68%
16	27	28.42%
17	33	34.74%
18	11	11.58%
<b>Total</b>	<b>95</b>	<b>100.00%</b>



Demographic Characteristics of Juvenile Hall Detainees  
on 2/28/2011  
Age by Gender

Age	Female	Male	Total	
11	0	0	0	0.00%
12	0	0	0	0.00%
13	1	0	1	1.05%
14	4	6	10	10.53%
15	3	10	13	13.68%
16	4	23	27	28.42%
17	1	32	33	34.74%
18 and over	0	11	11	11.58%
<b>Total</b>	<b>13</b>	<b>82</b>	<b>95</b>	<b>100.00%</b>
	<b>13.68%</b>	<b>86.32%</b>	<b>100.00%</b>	





Demographic Characteristics  
Of Juvenile Hall Detainees on February 28<sup>th</sup>, 2011

---

<b>Geographic Residence of Youth</b>	<b>Count</b>	<b>%</b>
Richmond	4	4.2%
Marina	1	1.1%
North of Market/Downtown	1	1.1%
Treasure Island/Yerba Buena Island	0	0.0%
Western Addition	7	7.4%
South of Market/Tenderloin	0	0.0%
Sunset	6	6.3%
Haight Ashbury/Castro/Upper Market	2	2.1%
Inner Mission	11	11.6%
Potrero	2	2.1%
Parkside	4	4.2%
Ingleside (West of Twin Peaks)	6	6.3%
Outer Mission	11	11.6%
Bayview	23	24.2%
Non-San Francisco and Unavailable	17	17.9%
<b>Total</b>	<b>95</b>	<b>100.0%</b>

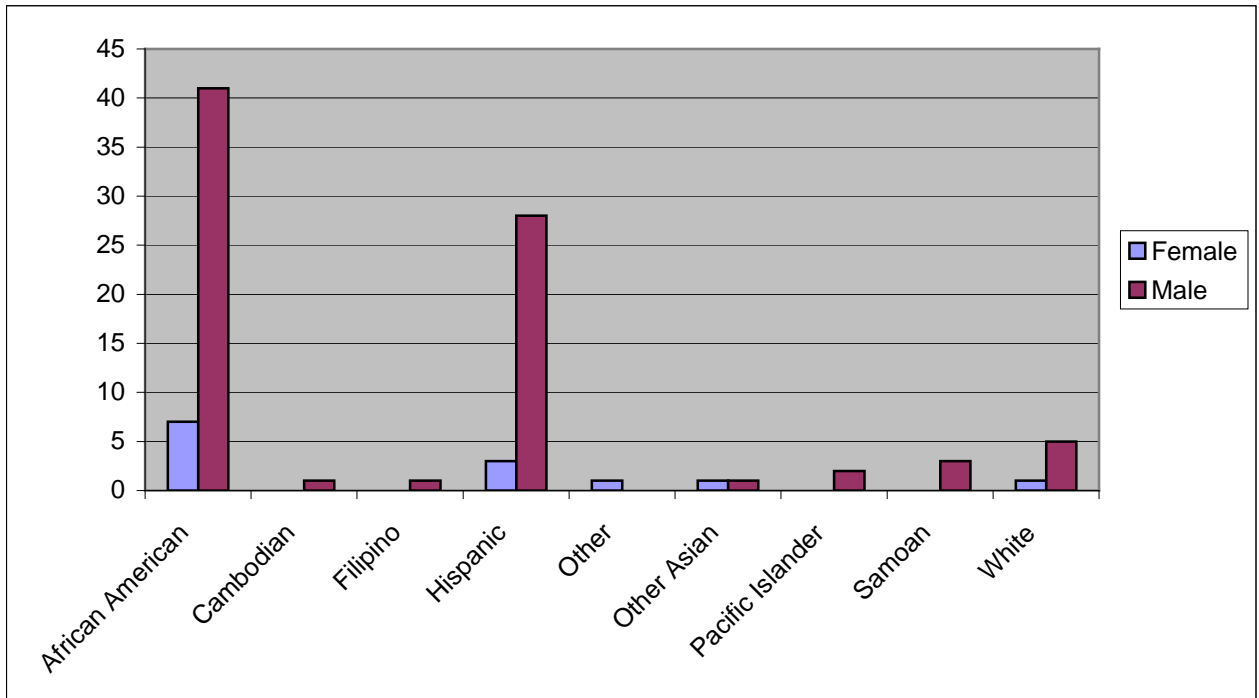
<b>Non-San Francisco and Unavailable</b>	<b>Count</b>	<b>%</b>
Brisbane	1	5.9%
Daly City	2	11.8%
Hilldale	1	5.9%
Marin City	1	5.9%
Oakland	1	5.9%
Richmond	1	5.9%
Santa Rosa	2	11.8%
Solaro Beach	1	5.9%
South San Francisco	1	5.9%
Springfield	1	5.9%
Unavailable	5	29.4%
<b>Total</b>	<b>17</b>	<b>100.0%</b>

Demographic Characteristics  
Of Juvenile Hall Detainees on February 28<sup>th</sup>, 2011

---

**Race/Ethnic Origin by Gender**

Race/Ethnicity	Female	Male	Total	%
African American	7	41	48	50.5%
Cambodian	0	1	1	1.1%
Filipino	0	1	1	1.1%
Hispanic	3	28	31	32.6%
Other	1	0	1	1.1%
Other Asian	1	1	2	2.1%
Pacific Islander	0	2	2	2.1%
Samoan	0	3	3	3.2%
White	1	5	6	6.3%
<b>Total</b>	<b>13</b>	<b>82</b>	<b>95</b>	<b>100.0%</b>

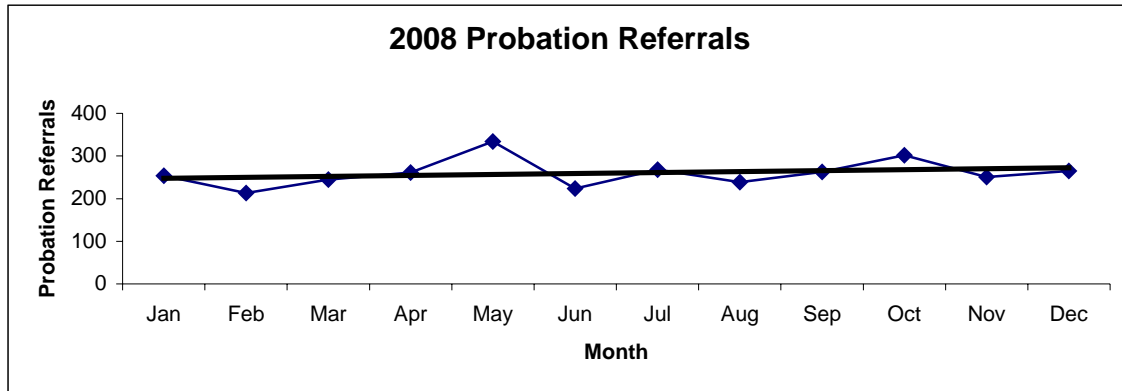


# **Section IV**

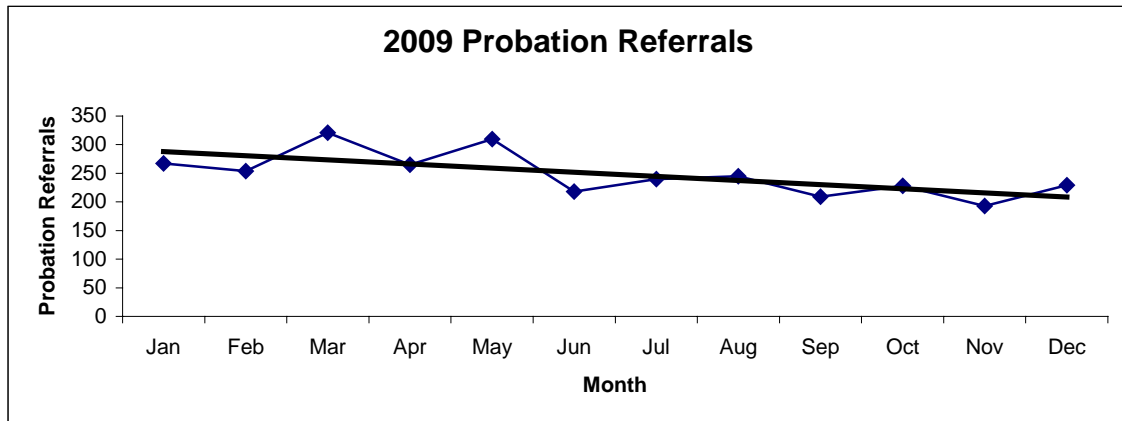
## **Historical Information**

San Francisco Juvenile Probation Department  
**Probation Referrals (all sources) By Month**  
 (2008-2010)

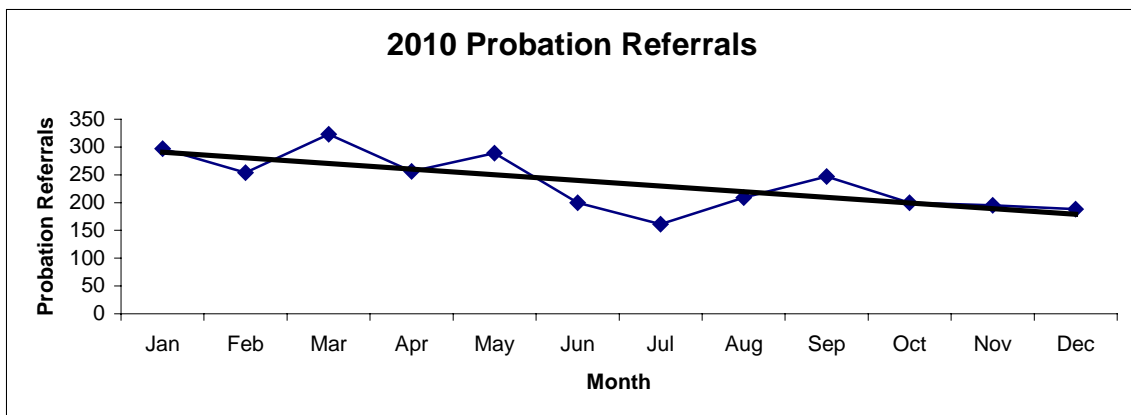
2008 Probation Referrals	Jan	Feb	Mar	Apr	May	Jun	Jul	Aug	Sep	Oct	Nov	Dec	Total
	254	213	245	261	334	224	268	239	263	302	251	265	<b>3119</b>



2009 Probation Referrals	Jan	Feb	Mar	Apr	May	Jun	Jul	Aug	Sep	Oct	Nov	Dec	Total
	267	254	321	265	310	218	240	245	209	228	193	229	<b>2979</b>

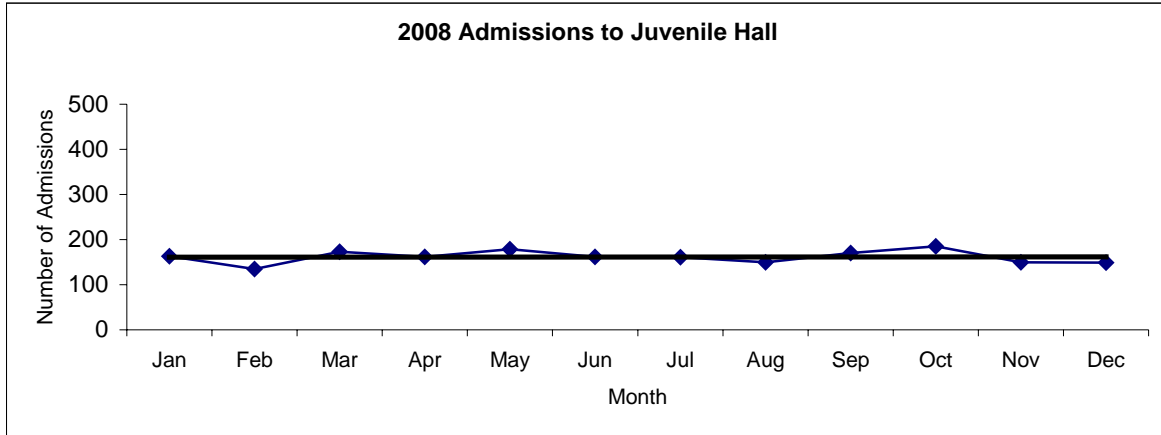


2010 Probation Referrals	Jan	Feb	Mar	Apr	May	Jun	Jul	Aug	Sep	Oct	Nov	Dec	Total
	297	254	323	256	289	200	161	209	247	200	195	188	<b>2819</b>

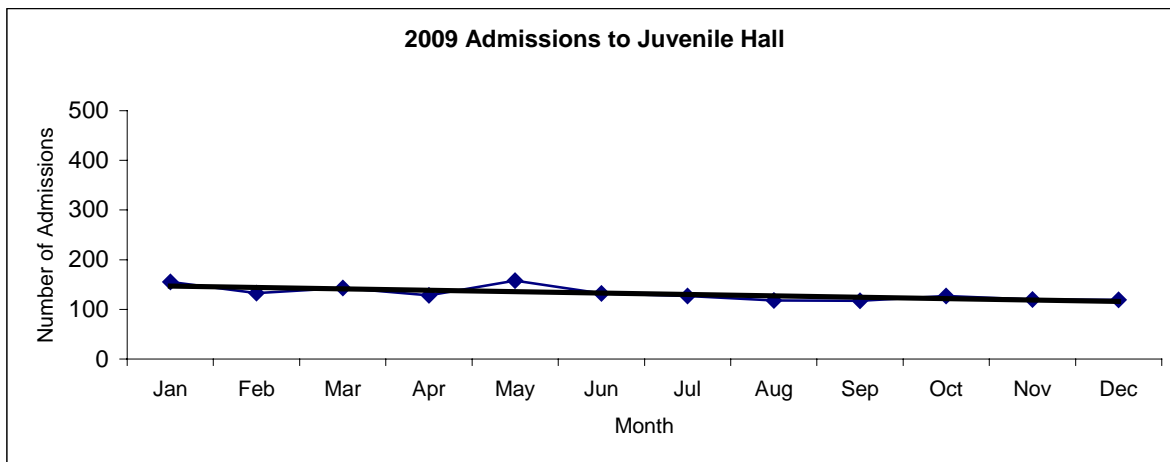


**San Francisco Juvenile Probation**  
**Juvenile Hall Admissions By Month**  
(2008-2010)

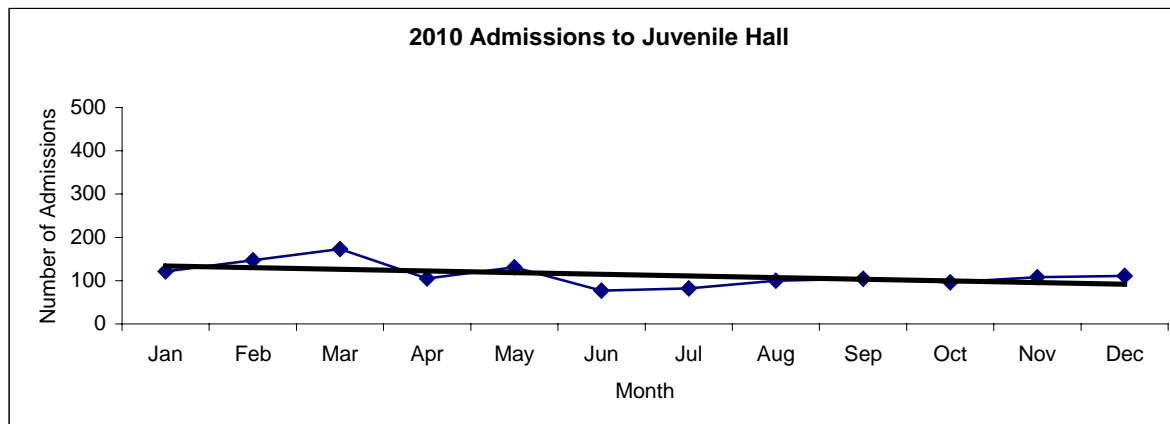
2008 Admissions	Jan	Feb	Mar	Apr	May	Jun	Jul	Aug	Sep	Oct	Nov	Dec	Total
	163	135	173	162	179	162	161	150	170	185	150	149	<b>1939</b>



2009 Admissions	Jan	Feb	Mar	Apr	May	Jun	Jul	Aug	Sep	Oct	Nov	Dec	Total
	155	133	143	128	158	132	127	118	117	127	120	119	<b>1577</b>

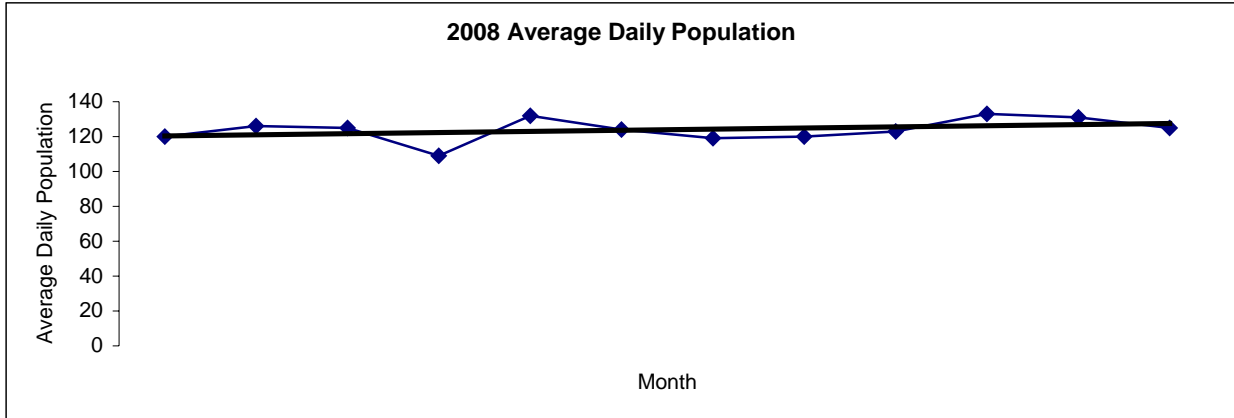


2010 Admissions	Jan	Feb	Mar	Apr	May	Jun	Jul	Aug	Sep	Oct	Nov	Dec	Total
	121	147	173	105	131	77	82	100	104	96	108	111	<b>1355</b>

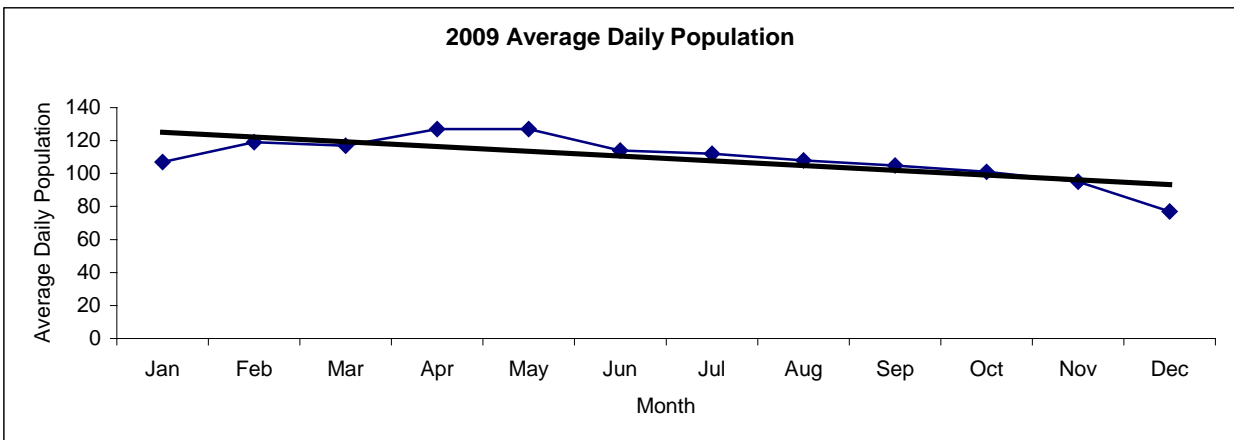


San Francisco Juvenile Probation  
**Juvenile Hall Average Daily Population By Month**  
 (2008-2010)

2008 Avg. Daily Pop.	Jan	Feb	Mar	Apr	May	Jun	Jul	Aug	Sep	Oct	Nov	Dec	Total
	120	126	125	109	132	124	119	120	123	133	131	125	<b>124</b>



2009 Avg. Daily Pop.	Jan	Feb	Mar	Apr	May	Jun	Jul	Aug	Sep	Oct	Nov	Dec	Total
	107	119	117	127	127	114	112	108	105	101	95	77	<b>109</b>



2010 Avg. Daily Pop.	Jan	Feb	Mar	Apr	May	Jun	Jul	Aug	Sep	Oct	Nov	Dec	Total
	85	104	110	107	99	97	90	88	90	84	79	92	<b>94</b>

