

# San Francisco Juvenile Probation Department

## **2011 Statistical Report**

1/1/11 to 12/31/11

**William P. Siffermann**  
Chief Probation Officer

Created by  
Jose Luis Perla  
IT Director  
Information Technology Unit  
375 Woodside Avenue  
San Francisco, CA 94127  
(415) 753-7686  
[jose.perla@sfgov.org](mailto:jose.perla@sfgov.org)

3/1/2012



**City and County of San Francisco  
Juvenile Probation Department**

**William P. Siffermann**  
Chief Probation Officer

375 Woodside Avenue  
San Francisco, CA 94127  
(415) 753-7800

March, 2012

On behalf of the entire San Francisco Juvenile Probation Department, I welcome your review of our **2011 Annual Report** prepared under the direction of our Information Technology Director, Jose Perla.

As in the past, our report depicts the composition of our assigned workload and reflects the dispositional outcomes for all the matters addressed by the Juvenile Probation Department during this past year. We have continued to include in our report, various presentations of aggregate data assembled on geographical maps arranged by zip codes, supervisorial districts and police districts. The statistical breakdown at the various case decision points provides you with an opportunity to see the variety of tracks and dispositions available within the San Francisco juvenile justice system.

This year we have added a new featured section which provides a detailed focus upon probation violations. We intend to use these data to guide our efforts in creating a grid of alternative responses to technical violations of probation that includes incentives. We hope you find these data useful in the development of community based services that will support our efforts with this special juvenile population.

Thanks again for your interest in the San Francisco Juvenile Probation Department. While the aggregate numbers presented in this report help describe the landscape of our workload, please be assured that our staff in every division are committed to provide meaningful interventions with youth and families that develop pro-social competencies in the context of enhanced public safety and productive community membership. Please know that we are always open to your suggestions on ways we can improve those efforts so that the positive outcomes for the youth and our community are enhanced.

We remain grateful for your interest and support and welcome any suggestions you may have on ways we can improve the scope and utility of future Annual Reports.

Sincerely,

A handwritten signature in black ink that reads "William P. Siffermann". The signature is fluid and cursive, with the first and last names being more prominent.

William P. Siffermann  
Chief Probation Officer

# Table of Contents

## Statistical Reports

Five-Year Statistical Summary All Juvenile Hall Bookings .....	1
Five-Year Statistical Summary Petition Outcome .....	2

### ***Juvenile Probation Referrals***

Unduplicated Count of Juvenile Probation Referrals by Gender, Race/Ethnic Origin, and Age .....	3
Unduplicated Count of Juvenile Probation Referrals by Geographical Residence of Youth – San Francisco Zip Code .....	4
Unduplicated Count of Juvenile Probation Referrals by Geographical Residence of Youth – Map of Supervisorial Districts Boundaries .....	5
Unduplicated Count of Juvenile Probation Referrals by Geographical Residence of Youth – Map of San Francisco Zip Code Boundaries .....	6
Duplicated Count of Juvenile Probation Referrals by Gender, Race/Ethnic Origin, and Age at Referral .....	7
Duplicated Count of Juvenile Probation Referrals for Criminal Offenses .....	8

### ***Juvenile Hall Bookings (Detentions)***

Unduplicated Count of Juvenile Hall Bookings for Criminal Offenses by Gender, Race/Ethnic Origin, and Age .....	9
Unduplicated Count of Juvenile Hall Bookings for Criminal Offenses by Geographical Residence of Youth – <i>Map of Supervisorial Districts Boundaries</i> .....	10
Unduplicated Count of Juvenile Hall Bookings for Criminal Offenses by Geographical Residence of Youth – <i>Map of San Francisco Zip Code Boundaries</i> .....	11
Unduplicated Count of Juvenile Hall Bookings for Criminal Offenses – Five-Year Comparison by Geographical Residence of Youth .....	12

Unduplicated Count of Juvenile Hall Bookings– Analysis of the Prior Arrests for Criminal Offenses of Youth Admitted to Detention ( <i>Line Chart</i> ) .....	13
Duplicated Count of Juvenile Hall Bookings for Criminal Offenses By Year 2000 – 2011 ( <i>Line Chart</i> ) .....	14
Duplicated Count of Juvenile Hall Bookings by Most to Least Serious Detention Reasons using Department of Justice Summary Code.....	15
Duplicated Count of Juvenile Hall Bookings for Criminal Offenses By Referral Source.....	16
Duplicated Count of Juvenile Hall Bookings for Criminal Offenses By FBI Part I and Part II Crimes .....	17
Duplicated Count of Juvenile Hall Bookings for Criminal Offenses By Gender, Crime Type and Offense Degree Level.....	18
Duplicated Count of Juvenile Hall Bookings for Criminal Offenses By Race/Ethnic Origin, Crime Type and Offense Degree Level.....	19

### ***Petitions Filed***

Duplicated Count of Petitions Filed by Most to Least Serious Petition Reasons using Department of Justice Summary Code .....	20
Duplicated Count of Petitions Filed for Criminal Offenses By Gender, Crime Type and Offense Degree Level.....	21
Duplicated Count of Petitions Filed for Criminal Offenses By Race/Ethnic Origin, Crime Type and Offense Degree Level.....	22

### ***Petitions Sustained***

Duplicated Count of Petitions Sustained by Most to Least Serious Petition Sustained using Department of Justice Summary Code.....	23
Duplicated Count of Petitions Sustained for Criminal Offenses By Gender, Crime Type and Offense Degree Level.....	24
Duplicated Count of Petitions Sustained for Criminal Offenses By Race/Ethnic Origin, Crime Type and Offense Degree Level.....	25

### ***Graphics***

2011 Juvenile Hall Average Daily Population .....	26
2011 Juvenile Hall Average Length of Stay .....	27
2011 Juvenile Court Processing of Law Violation Cases.....	28

### ***Juvenile Justice System Terms***

Juvenile Justice Terms .....	29
------------------------------	----

### ***Appendix***

Profile of Girls .....	1-10
Probation Violations .....	1-5

San Francisco Juvenile Probation Department  
All Juvenile Hall Bookings  
Statistical Summary  
2007-2011

						2007-2011
	Year	Year	Year	Year	Year	Percent
	2007	2008	2009	2010	2011	Change
All Referrals*	3,131	3,446	3,296	2,814	2,196	-29.9%
Petitions Filed	1,500	1,607	1,291	1,209	1,009	-32.7%
% Petitions Filed	47.9%	46.6%	39.2%	43.0%	45.9%	
<b>Referrals resulting in a booking</b>						
All Juvenile Hall Bookings	1,871	1,931	1,569	1,355	1,146	-38.75%
Average Length of Stay	23	23	23	24	27	17.39%
Average Daily Population	119	124	109	94	89	-25.21%
% of Referrals Detained	59.8%	56.0%	47.6%	48.2%	52.2%	

*\*Includes Court Orders, Violation of Probation, Home Detention Failures, Warrants, Transfers from other Counties, Citations, Certifications from Adult Court, Placement Failures, Log Cabin Medical plus all criminal offenses.*

2011 Referrals	Count	%
Bookings	1,146	52.19%
Citations	845	38.48%
Other	205	9.34%
<b>Total All Referrals</b>	<b>2,196</b>	<b>100.00%</b>

Other Referrals	Count	%
602 WI Petition Filed	8	3.90%
777 WI Petition Filed	125	60.98%
Certification from Adult Court	1	0.49%
DJJ interstate Compact	2	0.98%
Transfer In From Other County	69	33.66%
<b>Total</b>	<b>205</b>	<b>100.00%</b>

San Francisco Juvenile Probation Department  
Statistical Summary  
2007-2011

						2007-2011
	Year	Year	Year	Year	Year	Percent
	2007	2008	2009	2010	2011	Change
All Referrals*	3131	3446	3296	2814	2196	-29.9%
Petitions Filed	1500	1607	1291	1209	1009	-32.7%
% Petitions Filed	47.9%	46.6%	39.2%	43.0%	45.9%	
<b>Outcome</b>						
Log Cabin Ranch School	37	21	22	33	24	-35.14%
California Youth Authority	0	2	3	2	1	0.00%
Ward Probation	474	446	412	335	352	-25.74%
Non-Ward Probation (725a WI)	49	53	60	45	30	-38.78%
Out-of-home Placement	241	218	155	130	137	-43.15%
Informal Probation (654 WI)	161	226	173	151	132	-18.01%
Remand to Adult Court (707)	0	5	4	0	6	0.00%
Transfer Out to Another County	216	171	159	138	136	-37.04%
Petition Sustained	1147	1100	936	757	640	-44.20%
Petition Dismissed	273	292	255	326	257	-5.86%

*\*Includes Court Orders, Violation of Probation, Home Detention Failures, Warrants, Transfers from other Counties, Citations, Certifications from Adult Court, Placement Failures, Log Cabin Medical plus all criminal offenses.*

*The total number of outcome (court dispositions) will not agree with the number of petitions and referrals since some petitions filed in 2011 will be decided in 2012 and multiple petitions are combined with one final outcome only. Not all referrals resulted in a petition filed.*

Calendar Year 2011  
San Francisco Juvenile Probation Department  
Unduplicated Count of Juvenile Probation Referrals  
N=1,419

Gender	Count	%
FEMALE	415	29.25%
MALE	1,004	70.75%
<b>Total</b>	<b>1,419</b>	<b>100.00%</b>

Race/Ethnic Origin	Count	%
AFRICAN AMERICAN	686	48.34%
AMERICAN INDIAN	2	0.14%
CAMBODIAN	2	0.14%
CHINESE	62	4.37%
FILIPINO	33	2.33%
GUAMANIAN	1	0.07%
HAWAIIAN	1	0.07%
HISPANIC	391	27.55%
JAPANESE	3	0.21%
LAOTIAN	1	0.07%
OTHER	38	2.68%
OTHER ASIAN	40	2.82%
PACIFIC ISLANDER	6	0.42%
SAMOAN	37	2.61%
VIETNAMESE	10	0.70%
WHITE	106	7.47%
<b>Total</b>	<b>1,419</b>	<b>100.00%</b>

Age on 2/29/12	Count	%
10	1	0.07%
11	3	0.21%
12	18	1.27%
13	64	4.51%
14	106	7.47%
15	198	13.95%
16	288	20.30%
17	374	26.36%
18	328	23.11%
Over 18	39	2.75%
<b>Total</b>	<b>1,419</b>	<b>100.00%</b>

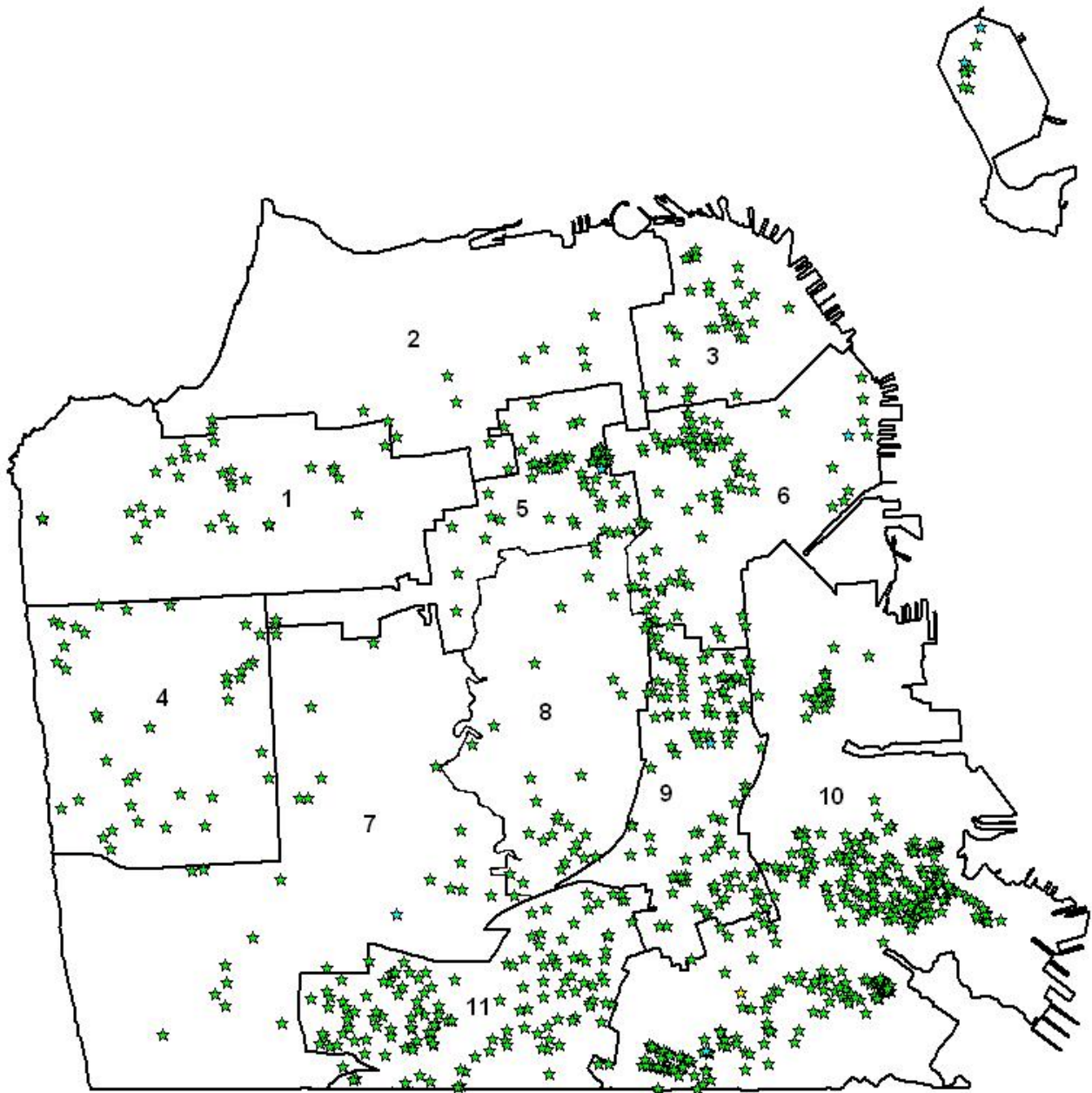


Calendar Year 2011  
San Francisco Juvenile Probation Department  
Unduplicated Count of Juvenile Probation Referrals  
N=1,419

Zip Code		Count	%
94102	Tenderloin/Western Addition	30	2.11%
94103	South of Market	39	2.75%
94105	Rincon Hill	3	0.21%
94107	Potrero Hill	34	2.40%
94108	Chinatown	2	0.14%
94109	Russian Hill/Polk Gulch	20	1.41%
94110	Inner Mission	112	7.89%
94111	Telegraph Hill/Waterfront	1	0.07%
94112	Ingleside/Excelsior	133	9.37%
94114	Castro/Eureka Valley	5	0.35%
94115	Western Addition	58	4.09%
94116	Parkside	23	1.62%
94117	Haight Ashbury/L Western Addition	20	1.41%
94118	Inner Richmond	13	0.92%
94121	Outer Richmond	27	1.90%
94122	Sunset	26	1.83%
94123	Marina/Cow Hollow	1	0.07%
94124	Bayview/Hunters Point	273	19.24%
94127	Miraloma/Sunnyside	11	0.78%
94130	Treasure Island	16	1.13%
94131	Twin Peaks/Glen Park	22	1.55%
94132	Lake Merced	38	2.68%
94133	North Beach	23	1.62%
94134	Visitacion Valley/Portola	123	8.67%
	<i>Non-San Francisco and Unavailable</i> <sup>1</sup>	366	25.79%
	<b>Total</b>	<b>1,419</b>	<b>74.21%</b>
	<b><sup>1</sup> Non-San Francisco and Unavailable</b>	<b>Count</b>	<b>%</b>
	OAKLAND	79	21.58%
	DALY CITY	34	9.29%
	RICHMOND	26	7.10%
	HAYWARD	18	4.92%
	ANTIOCH	16	4.37%
	VALLEJO	13	3.55%
	SACRAMENTO	12	3.28%
	BERKELEY	11	3.01%
	SOUTH SAN FRANCISCO	11	3.01%
	<i>OTHER CITIES</i> <sup>2</sup>	136	37.16%
	<i>UNAVAILABLE</i>	10	2.73%
	<b>Total</b>	<b>366</b>	<b>100.00%</b>

<sup>2</sup>Account for 73 cities with a minimum count of 1, maximum count of 8, and average of 1.39

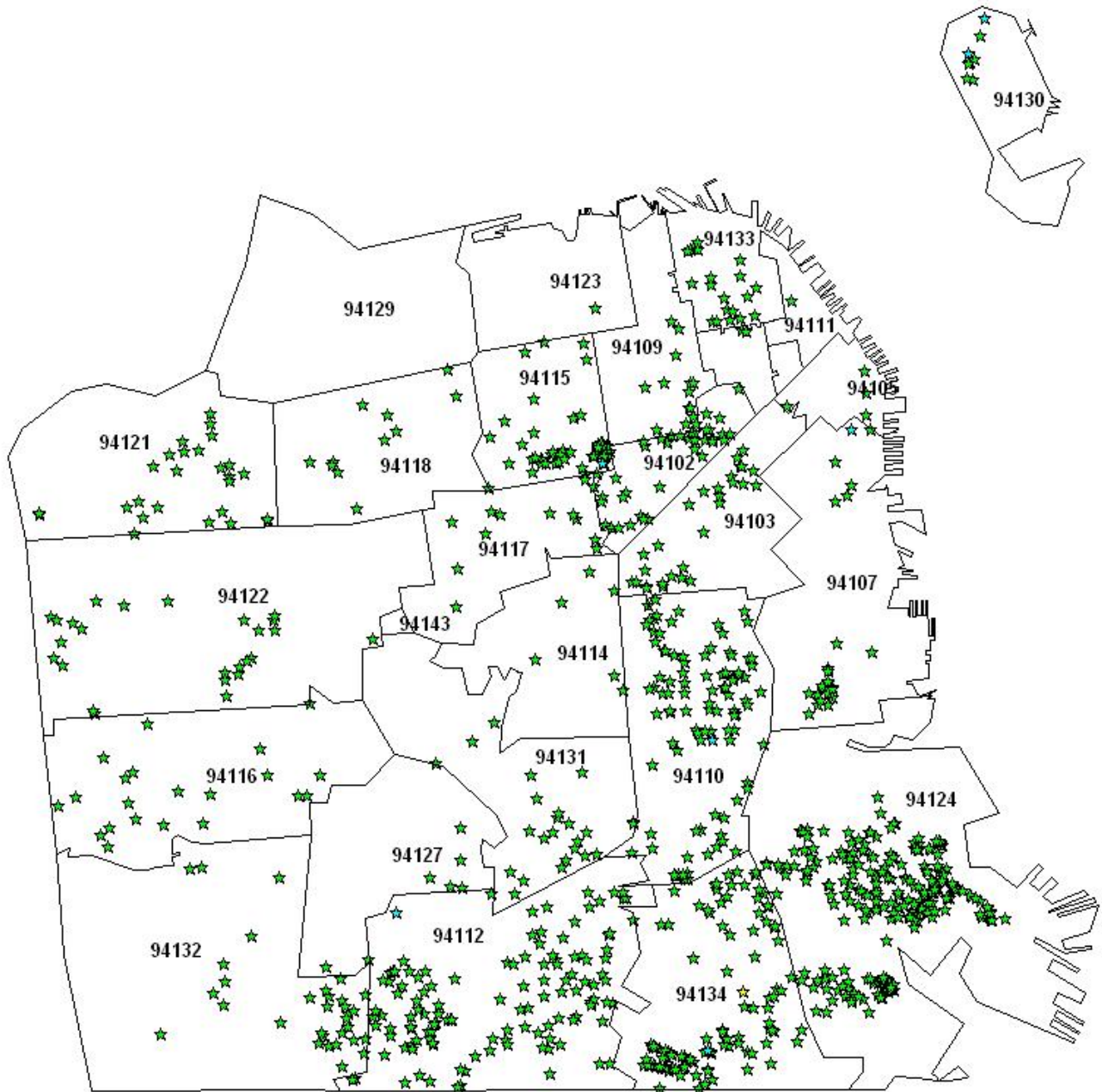
San Francisco Juvenile Probation Department  
2011 Unduplicated Count of Juvenile Probation Referrals  
By Geographical Residence of Youth  
Supervisory District Boundaries  
N=1,419<sup>1</sup>



<sup>1</sup>San Francisco = 1,053 (74.21%)  
Non-San Francisco = 366 (25.79%)

San Francisco Juvenile Probation Department  
2011 Unduplicated Count of Juvenile Probation Referrals  
By Geographical Residence of Youth  
San Francisco Zip Code Boundaries  
N=1,419<sup>1</sup>

<sup>1</sup>San Francisco = 1,053 (74.21%)  
Non-San Francisco = 366 (25.79%)



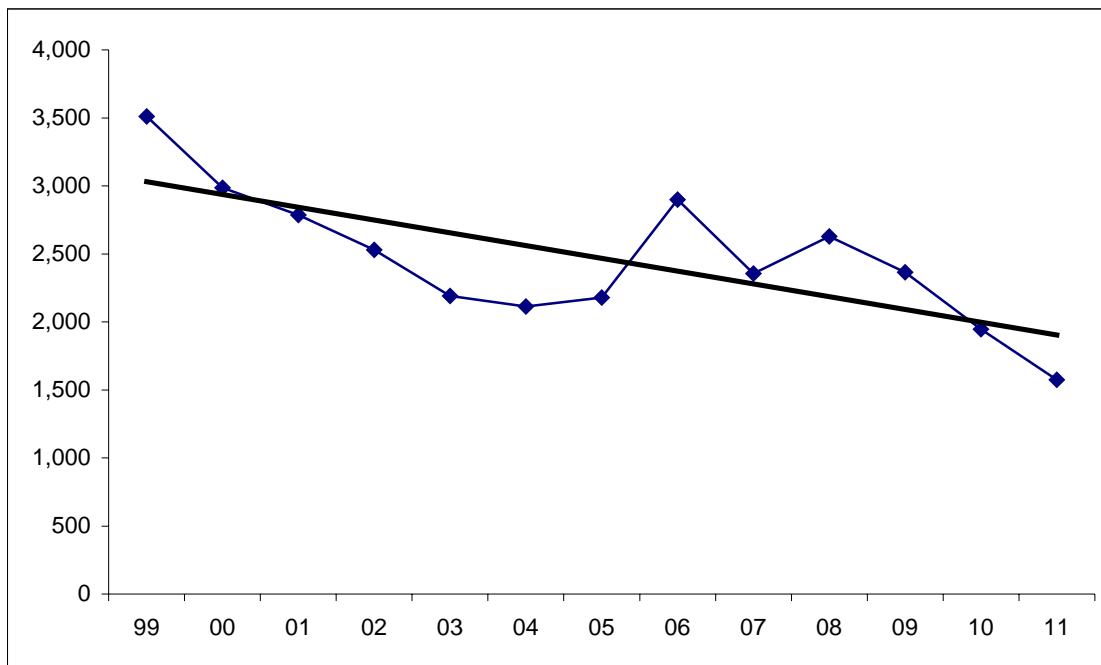
Calendar Year 2011  
San Francisco Juvenile Probation Department  
Duplicated Count of Juvenile Probation Referrals  
N=2,196

Gender	Count	%
FEMALE	571	26.00%
MALE	1,625	74.00%
<b>Total</b>	<b>2,196</b>	<b>100.00%</b>

Race/Ethnic Origin	Count	%
AFRICAN AMERICAN	1,147	52.23%
AMERICAN INDIAN	4	0.18%
CAMBODIAN	2	0.09%
CHINESE	77	3.51%
FILIPINO	43	1.96%
GUAMANIAN	2	0.09%
HAWAIIAN	1	0.05%
HISPANIC	587	26.73%
JAPANESE	3	0.14%
LAOTIAN	2	0.09%
OTHER	43	1.96%
OTHER ASIAN	51	2.32%
PACIFIC ISLANDER	12	0.55%
SAMOAN	72	3.28%
VIETNAMESE	15	0.68%
WHITE	135	6.15%
<b>Total</b>	<b>2,196</b>	<b>100.00%</b>

Age at Referral	Count	%
10	1	0.05%
11	15	0.68%
12	51	2.32%
13	136	6.19%
14	259	11.79%
15	419	19.08%
16	529	24.09%
17	687	31.28%
18	89	4.05%
Over 18	10	0.46%
<b>Total</b>	<b>2,196</b>	<b>100.00%</b>

San Francisco Juvenile Probation Department  
 Duplicated Count of Juvenile Probation Referrals -Criminal Offenses  
 1999-2011



Year	Referrals
99	3,510
00	2,986
01	2,785
02	2,530
03	2,191
04	2,113
05	2,179
06	2,900
07	2,356
08	2,628
09	2,364
10	1,945
11	1,573

Gender	1999	2000	2001	2002	2003	2004	2005	2006	2007	2008	2009	2010	2011
Male	2,416	1,924	1,829	1,687	1,537	1,452	1,593	2,075	1,646	1,892	1,671	1,378	1,134
Female	1,094	1,062	956	843	654	661	586	825	710	736	693	567	439
Total	3,510	2,986	2,785	2,530	2,191	2,113	2,179	2,900	2,356	2,628	2,364	1,945	1,573

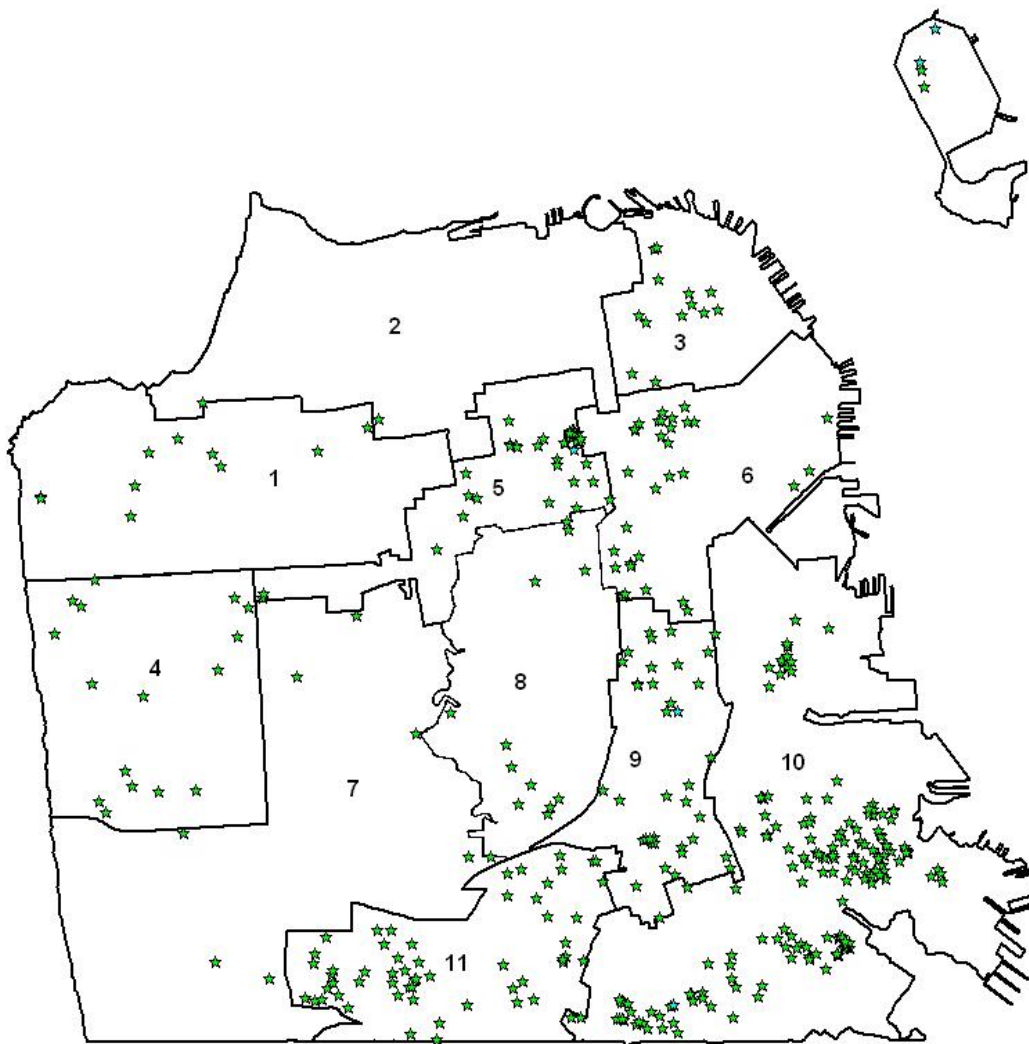
Calendar Year 2011  
San Francisco Juvenile Probation Department  
Unduplicated Count of Juvenile Hall Bookings  
Criminal Offenses  
N=587

Gender	Count	%
FEMALE	146	24.87%
MALE	441	75.13%
<b>Total</b>	<b>587</b>	<b>100.00%</b>

Race/Ethnic Origin	Count	%
AFRICAN AMERICAN	349	59.45%
CHINESE	21	3.58%
FILIPINO	8	1.36%
HISPANIC	144	24.53%
LAOTIAN	1	0.17%
OTHER	8	1.36%
OTHER ASIAN	9	1.53%
PACIFIC ISLANDER	3	0.51%
SAMOAN	22	3.75%
VIETNAMESE	1	0.17%
WHITE	21	3.58%
<b>Total</b>	<b>587</b>	<b>100.00%</b>

Age on 2/29/12	Count	%
11	2	0.34%
12	3	0.51%
13	25	4.26%
14	43	7.33%
15	93	15.84%
16	117	19.93%
17	165	28.11%
18	136	23.17%
Over 18	3	0.51%
<b>Total</b>	<b>587</b>	<b>100.00%</b>

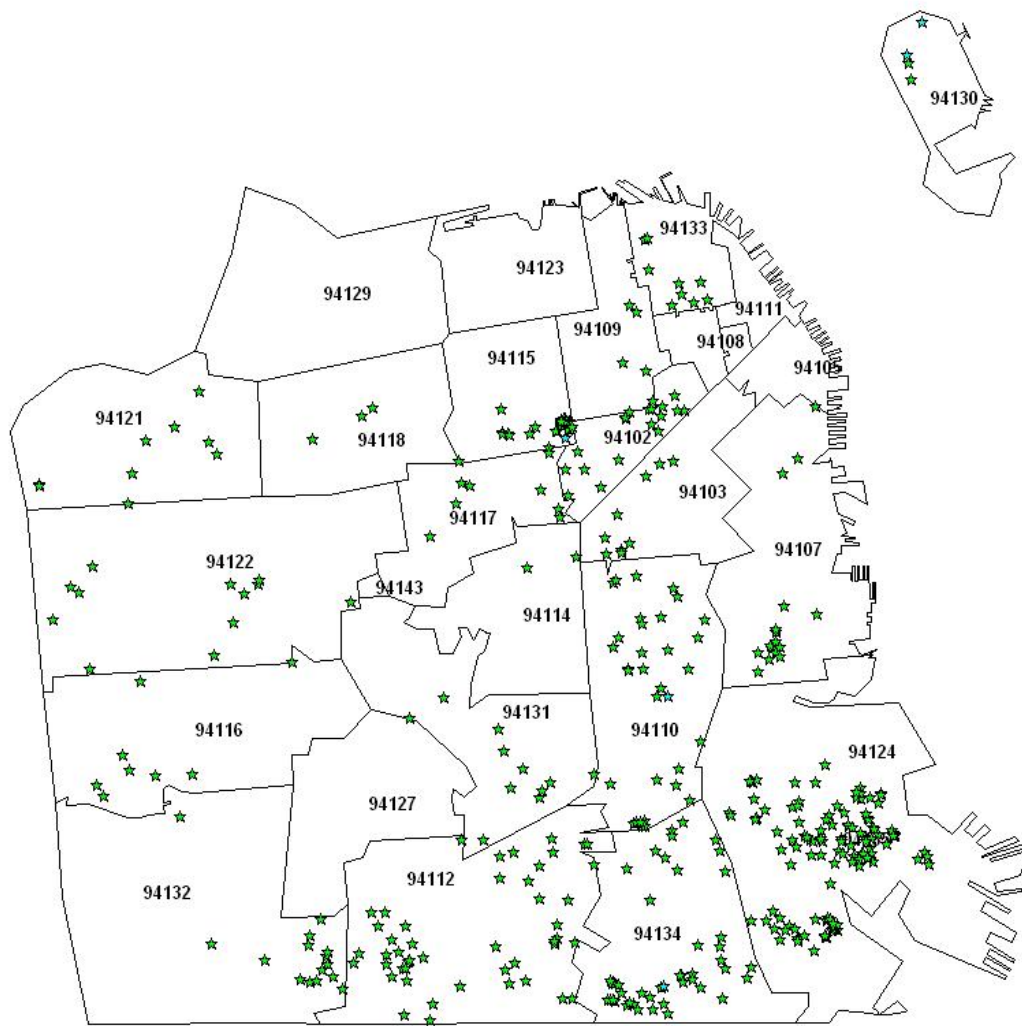
San Francisco Juvenile Probation Department  
2011 Unduplicated Count of Juvenile Hall Bookings  
Criminal Offenses  
By Geographical Residence of Youth  
**Supervisory District Boundaries**  
N=587<sup>1</sup>



<sup>1</sup>San Francisco = 439 (74.79%)  
Non-San Francisco = 148 (25.21%)



San Francisco Juvenile Probation Department  
2011 Unduplicated Count of Juvenile Hall Bookings  
Criminal Offenses  
By Geographical Residence of Youth  
**Zip Code Boundaries**  
N=587<sup>1</sup>



<sup>1</sup>San Francisco = 439 (74.79%)  
Non-San Francisco = 148 (25.21%)



San Francisco Juvenile Probation Department  
Unduplicated Count of Juvenile Hall Bookings  
Criminal Offenses  
By Geographical Residence of Youth  
Zip Code  
2007-2011

Zip Code		2007	2008	2009	2010	2011	% Change
94102	Tenderloin/Western Addition	22	27	17	24	14	-36.4%
94103	South of Market	18	20	23	15	15	-16.7%
94107	Potrero Hill	20	24	25	18	17	-15.0%
94108	Chinatown	7	4	0	2	0	-100.0%
94109	Russian Hill/Polk Gulch	20	12	11	6	9	-55.0%
94110	Inner Mission	56	66	75	69	37	-33.9%
94112	Ingleside/Excelsior	72	77	67	50	53	-26.4%
94114	Castro/Eureka Valley	5	3	1	2	2	-60.0%
94115	Western Addition	46	45	27	23	30	-34.8%
94116	Parkside	23	18	13	13	9	-60.9%
94117	Haight Ashbury/L Western Addition	21	20	13	14	9	-57.1%
94118	Inner Richmond	6	6	2	3	3	-50.0%
94121	Outer Richmond	13	16	6	10	10	-23.1%
94122	Sunset	6	21	11	17	12	100.0%
94123	Marina/Cow Hollow	1	0	0	1	0	1.0%
94124	Bayview/Hunters Point	182	195	160	154	125	-31.3%
94127	Miraloma/Sunnyside	2	5	4	2	2	0.0%
94130	Treasure Island	8	18	16	9	8	0.0%
94131	Twin Peaks/Glen Park	5	10	7	5	10	100.0%
94132	Lake Merced	18	17	16	8	16	-11.1%
94133	North Beach	20	15	10	11	10	-50.0%
94134	Visitacion Valley/Portola	73	70	72	51	48	-34.2%
	<i>Non-San Francisco and Unavailable</i>	327	323	260	173	148	-54.7%
	<b>Total</b>	<b>971</b>	<b>1,012</b>	<b>836</b>	<b>680</b>	<b>587</b>	<b>-39.5%</b>

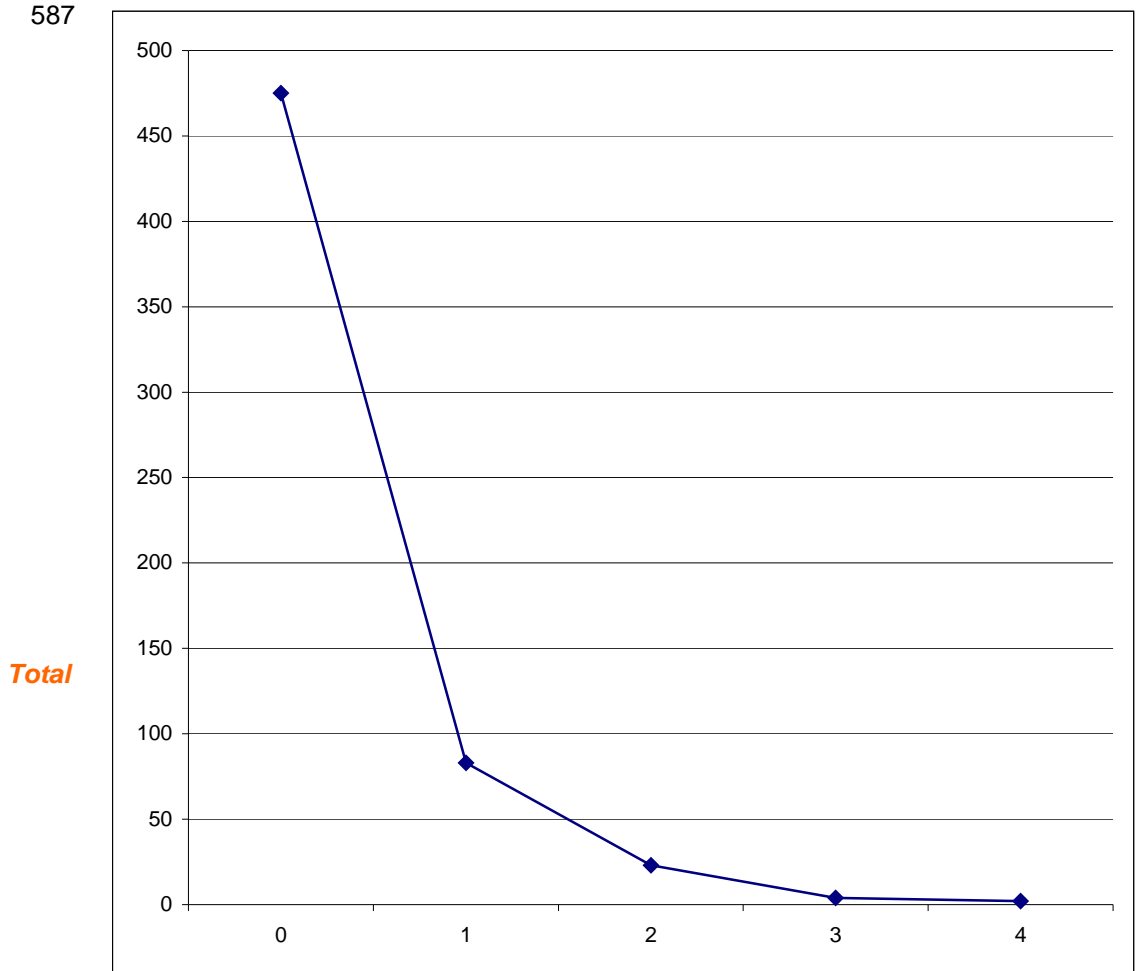
# San Francisco Juvenile Probation Department

## *Unduplicated Count of Juvenile Hall Bookings*

Analysis of the Prior Arrests during 2011 For Criminal Offenses  
of Youth Admitted to Juvenile Hall in Calendar Year 2011

**N=587**

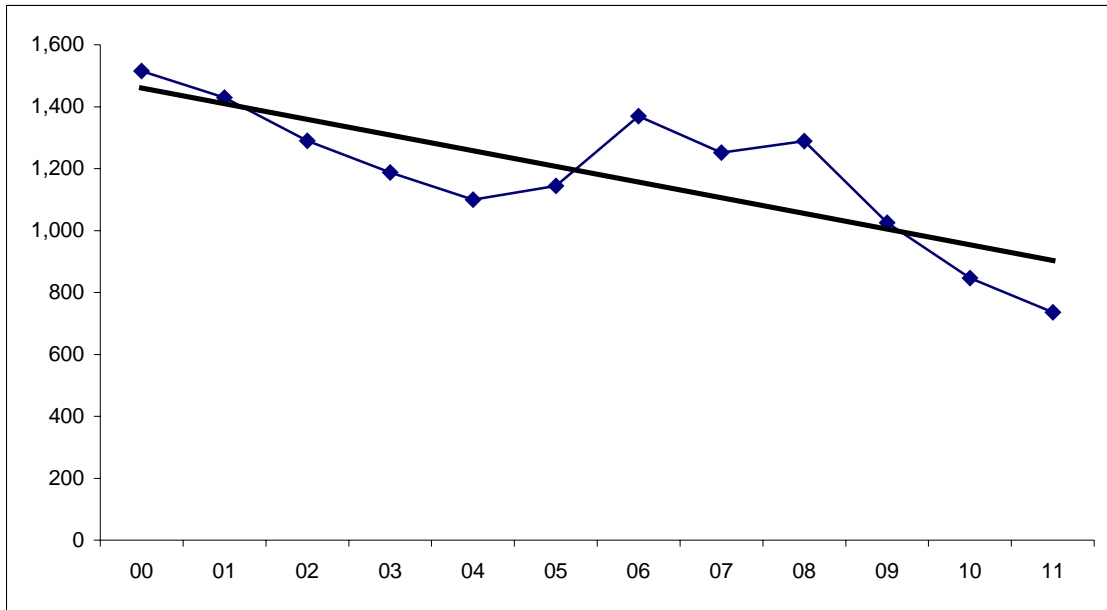
Prior Arrests	Total
0	475
1	83
2	23
3	4
4	2
Total	587



**Number of Prior Arrests for Criminal Offenses during 2011**

Arrested		
one time	475	80.92%
more than 1	112	19.08% Recidivist Rate
Total	587	100.00%

San Francisco Juvenile Probation Department  
 Duplicated Count of Juvenile Hall Bookings -Criminal Offenses  
 2000-2011



Year	Bookings
00	1,515
01	1,429
02	1,290
03	1,188
04	1,100
05	1,144
06	1,370
07	1,252
08	1,289
09	1,025
10	846
11	736

Gender	2000	2001	2002	2003	2004	2005	2006	2007	2008	2009	2010	2011
Male	1004	953	891	884	817	907	1023	944	986	781	667	568
Female	511	476	399	304	283	237	347	308	303	244	179	168
Total	1,515	1,429	1,290	1,188	1,100	1,144	1,370	1,252	1,289	1,025	846	736

City and County of San Francisco  
Juvenile Probation Department  
2011 Duplicated Count of Juvenile Hall Bookings –Sorted Most to Least Serious  
Criminal Offense Using Department of Justice Summary Codes

<i>Detention Reason</i>	Black		White		Hispanic		Asian		Other		Total	%
	Male	Female	Male	Female	Male	Female	Male	Female	Male	Female		
<b>Willful Homicide</b>	2	0	0	0	1	0	1	0	0	0	<b>4</b>	0.54
<b>Forcible Rape</b>	0	0	0	0	1	0	0	0	0	0	<b>1</b>	0.14
<b>Robbery</b>	139	21	2	2	44	10	7	4	14	2	<b>245</b>	33.29
<b>Assault*</b>	62	12	1	1	27	7	7	3	5	6	<b>131</b>	17.80
<b>Kidnapping</b>	3	0	0	0	0	2	3	0	1	0	<b>9</b>	1.22
<b>Burglary</b>	37	15	1	2	2	4	3	1	4	0	<b>69</b>	9.38
<b>Theft</b>	14	3	0	0	5	1	0	0	2	0	<b>25</b>	3.40
<b>Motor Vehicle Theft</b>	6	1	0	0	1	1	2	0	0	0	<b>11</b>	1.49
<b>Narcotics</b>	4	3	0	0	11	1	0	0	0	0	<b>19</b>	2.58
<b>Marijuana –Felony</b>	4	0	0	1	0	0	2	0	0	0	<b>7</b>	0.95
<b>Dangerous Drugs</b>	1	0	0	0	1	0	0	0	0	0	<b>2</b>	0.27
<b>Child Molest –Felony</b>	3	0	0	0	3	0	0	0	0	0	<b>6</b>	0.82
<b>Sexual Battery</b>	4	1	2	0	0	0	1	0	1	0	<b>9</b>	1.22
<b>Weapons –Felony</b>	38	2	1	0	7	2	0	0	1	0	<b>51</b>	6.93
<b>Drive Under the Influence</b>	0	0	0	0	2	0	0	0	0	0	<b>2</b>	0.27
<b>Escape</b>	1	0	0	0	0	0	0	0	0	0	<b>1</b>	0.14
<b>Arson</b>	2	2	0	0	0	2	5	0	0	0	<b>11</b>	1.49
<b>Other Felonies</b>	8	1	3	0	5	2	1	1	0	0	<b>21</b>	2.85
Assault Battery	13	12	0	1	8	4	1	1	3	0	<b>43</b>	5.84
Petty Theft	4	7	3	0	1	2	0	0	0	0	<b>17</b>	2.31
Defrauding Innkeeper	0	1	0	0	1	0	0	0	0	0	<b>2</b>	0.27
Annoying Children	1	0	0	0	2	0	0	0	0	0	<b>3</b>	0.41
Prostitution	0	13	0	1	0	2	0	0	0	0	<b>16</b>	2.17
Drunk	0	0	0	0	0	1	0	0	0	0	<b>1</b>	0.14
Disturbing Peace	0	1	0	0	0	1	0	0	0	0	<b>2</b>	0.27
Vandalism	5	0	2	0	1	0	0	0	0	0	<b>8</b>	1.09
Trespassing	1	0	0	0	0	0	0	0	0	0	<b>1</b>	0.14
Weapons –Misdemeanor	5	1	0	0	0	0	0	0	0	0	<b>6</b>	0.82
Joy Riding	1	0	0	0	0	0	0	0	0	0	<b>1</b>	0.14
Other Misdemeanors	0	2	1	0	1	0	0	0	0	0	<b>4</b>	0.54
Sex Crimes –Misdemeanor	0	1	0	0	0	0	0	0	0	0	<b>1</b>	0.14
Escape –Misdemeanor	2	0	0	0	0	0	0	0	0	0	<b>2</b>	0.27
Miscellaneous Traffic	2	0	0	0	1	0	0	0	0	0	<b>3</b>	0.41
Other Drugs –Misdemeanor	0	1	0	0	0	0	1	0	0	0	<b>2</b>	0.27
<b>Total</b>	<b>362</b>	<b>100</b>	<b>16</b>	<b>8</b>	<b>125</b>	<b>42</b>	<b>34</b>	<b>10</b>	<b>31</b>	<b>8</b>	<b>736</b>	100.00
<b>%</b>	<b>49.18</b>	<b>13.59</b>	<b>2.17</b>	<b>1.09</b>	<b>16.98</b>	<b>5.71</b>	<b>4.62</b>	<b>1.36</b>	<b>4.21</b>	<b>1.09</b>	<b>100.00</b>	

\*Includes 3 attempted murders.

Calendar Year 2011  
Referral Source  
Duplicated Count of Juvenile Hall Bookings  
Criminal Offenses  
N=736

<b>Law Enforcement Referrals</b>		
<b>Local</b>	Number	Percent
San Francisco Police	648	88.04%
<b>Out-of-County Police Departments</b>		
<b>State</b>		
California State Police	1	0.14%
<b>Federal</b>		
Federal Park Police	3	0.41%
<i>Total out-of county police departments</i>	4	
<b>Total Law Enforcement</b>	<b>652</b>	<b>88.59%</b>
<b>Court Referrals</b>	Number	Percent
Alameda	10	1.36%
Contra Costa	3	0.41%
Fresno	1	0.14%
Los Angeles	3	0.41%
San Bernardino	1	0.14%
Sacramento	1	0.14%
San Diego	1	0.14%
San Joaquin	1	0.14%
San Mateo	28	3.80%
Santa Clara	1	0.14%
Solano	2	0.27%
Sonoma	2	0.27%
Stanislaus	2	0.27%
Tulare	1	0.14%
<b>Total Court</b>	<b>57</b>	<b>7.74%</b>
<b>Department/Agency Referrals</b>	Number	Percent
Probation Officer	27	3.67%
<b>Total Department/Agency</b>	<b>27</b>	<b>3.67%</b>
<b>Total Referrals - All Sources</b>	<b>736</b>	<b>100.00%</b>

**City and County of San Francisco  
Juvenile Probation Department  
Duplicated Count of Juvenile Hall Bookings  
Criminal Offenses**

	2007	2008	2009	2010	2011	Total	%
<b>Part I Crimes</b>							
Murder & Non-Negligent Manslaughter							
Willful Homicide	8	5	2	6	4	25	0.8%
Manslaughter Not Vehicle	0	0	0	1	0	1	0.0%
Manslaughter Vehicle	0	0	0	1	0	1	0.0%
Negligent Manslaughter	0	0	0	0	0	0	0.0%
Rape	0	2	4	3	1	10	0.3%
Robbery	326	349	302	259	245	1481	47.9%
Aggravated Assault							
Assault	205	219	201	173	131	929	30.0%
Kidnapping	12	3	1	10	9	35	1.1%
Arson	5	2	3	4	11	25	0.8%
Burglary	66	74	57	47	69	313	10.1%
Auto Boosting (Larceny)	0	0	0	0	0	0	0.0%
Larceny/Theft							
Theft	38	42	34	23	25	162	5.2%
Motor Vehicle Theft	34	29	19	20	11	113	3.7%
<b>Total Part I Crimes</b>	<b>694</b>	<b>725</b>	<b>623</b>	<b>547</b>	<b>506</b>	<b>3,095</b>	<b>100.0%</b>
<b>Part II Crimes</b>							
Other Assaults							
Sexual Battery	7	4	4	4	9	28	1.4%
Assault Battery	73	59	59	53	43	287	14.0%
Forgery and Counterfeiting							
Forgery, Checks, Access Cards	0	3	0	0	0	3	0.1%
Fraud and Worthless Checks							
Bookmaking	0	0	0	0	0	0	0.0%
Defrauding Innkeeper	3	3	0	1	2	9	0.4%
Embezzlement	0	0	0	0	0	0	0.0%
Receiving Stolen Property*	12	24	8	10	12	66	3.2%
Vandalism	7	6	5	10	15	43	2.1%
Weapons Offenses	78	91	77	57	57	360	17.5%
Prostitution and Commercialized Vice							
Prostitution	35	25	19	17	16	112	5.5%
Sex Offenses (Except Rape and Prostitution)	9	6	5	2	14	36	1.8%
Drug Abuse Violations							
Narcotics	215	204	99	56	21	595	29.0%
Marijuana	32	34	34	17	7	124	6.0%
Dangerous Drugs	7	6	9	7	2	31	1.5%
Gambling	0	0	0	0	0	0	0.0%
Offense Against Family and Children	0	0	0	0	0	0	0.0%
Driving Under the Influence	4	0	1	1	2	8	0.4%
Malicious Mischief	1	0	0	0	0	1	0.0%
Liquor Laws	1	1	3	0	0	5	0.2%
Drunkenness	1	2	1	1	1	6	0.3%
Desorderly Conduct	1	0	2	3	0	6	0.3%
Curfew and Loitering Laws	0	0	0	0	0	0	0.0%
All Other Offenses (Except Traffic)	72	96	76	60	29	333	16.2%
<b>Total Part II Crimes</b>	<b>558</b>	<b>564</b>	<b>402</b>	<b>299</b>	<b>230</b>	<b>2,053</b>	<b>100.0%</b>
<b>Total Part I and Part II Crimes</b>	<b>1,252</b>	<b>1,289</b>	<b>1,025</b>	<b>846</b>	<b>736</b>	<b>5,148</b>	

\*Summary Code includes it with the Theft category

Calendar Year 2011  
**Duplicated Count of Juvenile Hall Bookings**  
**Criminal Offenses**

N=736

Gender		Offense Degree Level			Crime Type	Total
		<i>Felony</i>	<i>Misdemeanor</i>	Total	%	%
<b>Female</b>	<b>Crime Type</b>					
	Drug Crimes	5	1	6	3.6%	
	Person Crimes	73	19	92	54.8%	
	Property Crimes	30	13	43	25.6%	
	Public Order Crimes	5	22	27	16.1%	
	<b>Total</b>	<b>113</b>	<b>55</b>	<b>168</b>	<b>100.0%</b>	<b>22.8%</b>
<b>Male</b>	<b>Crime Type</b>					
	Drug Crimes	23	1	24	4.2%	
	Person Crimes	341	29	370	65.1%	
	Property Crimes	87	20	107	18.8%	
	Public Order Crimes	56	11	67	11.8%	
	<b>Total</b>	<b>507</b>	<b>61</b>	<b>568</b>	<b>100.0%</b>	<b>77.2%</b>
	<b>Total</b>	<b>620</b>	<b>116</b>	<b>736</b>		<b>100.0%</b>

Calendar Year 2011  
**Duplicated Count of Juvenile Hall Bookings**  
**Criminal Offenses**

N=736

Race/Ethnic Origin	Crime Type	Felony	Misdemeanor	Total	Crime Type	Total
					%	%
African American	Drug	12	1	13	2.8%	
	Person	252	27	279	60.4%	
	Property	79	21	100	21.6%	
	Public Order	44	26	70	15.2%	
	<b>Total</b>	<b>387</b>	<b>75</b>	<b>462</b>	<b>100.0%</b>	<b>62.8%</b>
Asian	Drug	2	1	3	6.8%	
	Person	29	2	31	70.5%	
	Property	7	2	9	20.5%	
	Public Order	1	0	1	2.3%	
	<b>Total</b>	<b>39</b>	<b>5</b>	<b>44</b>	<b>100.0%</b>	<b>6.0%</b>
Hispanic	Drug	13	0	13	7.8%	
	Person	96	15	111	66.5%	
	Property	19	5	24	14.4%	
	Public Order	14	5	19	11.4%	
	<b>Total</b>	<b>142</b>	<b>25</b>	<b>167</b>	<b>100.0%</b>	<b>22.7%</b>
Other	Drug	0	0	0	0.0%	
	Person	29	3	32	82.1%	
	Property	6	0	6	15.4%	
	Public Order	1	0	1	2.6%	
	<b>Total</b>	<b>36</b>	<b>3</b>	<b>39</b>	<b>100.0%</b>	<b>5.3%</b>
White	Drug	1	0	1	4.2%	
	Person	8	1	9	37.5%	
	Property	6	5	11	45.8%	
	Public Order	1	2	3	12.5%	
	<b>Total</b>	<b>16</b>	<b>8</b>	<b>24</b>	<b>100.0%</b>	<b>3.3%</b>
<b>Grand Total</b>		<b>620</b>	<b>116</b>	<b>736</b>		<b>100.0%</b>



City and County of San Francisco  
Juvenile Probation Department  
2011 Duplicated Count of Petitions Filed –Sorted Most to Least Serious  
Criminal Offense Using Department of Justice Summary Codes

<i>Petition Reason</i>	Black		White		Hispanic		Asian		Other		Total	%
	Male	Female	Male	Female	Male	Female	Male	Female	Male	Female		
<b>Willful Homicide</b>	0	0	0	0	1	0	1	0	0	0	<b>2</b>	0.24
<b>Forcible Rape</b>	0	0	0	0	1	0	0	0	0	0	<b>1</b>	0.12
<b>Robbery</b>	116	17	1	2	39	12	6	3	20	0	<b>216</b>	25.53
<b>Assault</b>	72	19	5	1	28	7	6	2	5	7	<b>152</b>	17.97
<b>Kidnapping</b>	5	0	0	0	1	0	3	0	0	0	<b>9</b>	1.06
<b>Burglary</b>	48	21	2	2	8	3	10	4	5	1	<b>104</b>	12.29
<b>Theft</b>	21	4	0	0	9	2	1	1	2	0	<b>40</b>	4.73
<b>Motor Vehicle Theft</b>	11	0	0	0	3	1	6	0	0	0	<b>21</b>	2.48
<b>Narcotics</b>	4	4	0	0	12	1	0	0	0	0	<b>21</b>	2.48
<b>Marijuana –Felony</b>	4	0	2	1	8	0	7	0	3	0	<b>25</b>	2.96
<b>Dangerous Drugs</b>	1	0	0	0	1	1	4	0	0	0	<b>7</b>	0.83
<b>Child Molest –Felony</b>	5	0	1	0	4	0	0	0	2	0	<b>12</b>	1.42
<b>Sexual Battery</b>	2	0	1	0	0	0	1	0	0	0	<b>4</b>	0.47
<b>Weapons –Felony</b>	45	3	1	0	7	2	1	0	1	0	<b>60</b>	7.09
<b>Driving Under the Influence</b>	0	0	0	1	0	0	0	0	0	0	<b>1</b>	0.12
<b>Hit and Run</b>	0	0	1	0	0	0	0	0	0	0	<b>1</b>	0.12
<b>Arson</b>	1	2	0	0	0	2	4	0	0	0	<b>9</b>	1.06
<b>Other Felonies</b>	10	0	5	0	20	5	2	0	4	0	<b>46</b>	5.44
Assault Battery	7	7	2	0	6	4	3	1	1	0	<b>31</b>	3.66
Petty Theft	4	6	3	0	1	2	1	0	1	2	<b>20</b>	2.36
Defrauding Innkeeper	0	2	0	0	1	0	0	0	0	0	<b>3</b>	0.35
Marijuana –Misdemeanor	0	0	0	1	0	0	0	0	0	0	<b>1</b>	0.12
Annoying Children	2	0	0	0	0	0	0	0	0	0	<b>2</b>	0.24
Prostitution	0	9	0	1	0	2	0	0	0	0	<b>12</b>	1.42
Drunk	1	0	0	0	0	1	0	0	0	0	<b>2</b>	0.24
Disturbing Peace	0	1	0	0	0	1	0	0	0	0	<b>2</b>	0.24
Vandalism	6	0	1	0	3	0	0	0	0	0	<b>10</b>	1.18
Malicious Mischief	0	0	0	0	0	0	1	0	0	0	<b>1</b>	0.12
Weapons –Misdemeanor	1	0	1	0	2	1	0	0	0	0	<b>5</b>	0.59
Driving Under the Influence	0	0	0	0	1	0	0	0	0	1	<b>2</b>	0.24
Joy Riding	1	1	0	0	0	0	1	0	2	1	<b>6</b>	0.71
Glue Sniffing	0	0	1	0	0	0	0	0	0	0	<b>1</b>	0.12
Other Misdemeanors	1	2	0	0	2	1	0	0	0	0	<b>6</b>	0.71
Sex Crimes -Misdemeanor	0	1	0	0	0	0	0	0	0	0	<b>1</b>	0.12
Escape -Misdemeanor	1	0	0	0	1	0	0	0	0	0	<b>2</b>	0.24
Miscellaneous Traffic	2	0	0	0	2	0	0	0	0	0	<b>4</b>	0.47
Other Drugs -Misdemeanor	1	1	0	0	1	1	0	0	0	0	<b>4</b>	0.47
<b>Total</b>	<b>372</b>	<b>100</b>	<b>27</b>	<b>9</b>	<b>162</b>	<b>49</b>	<b>58</b>	<b>11</b>	<b>46</b>	<b>12</b>	<b>846</b>	100.00
<b>%</b>	<b>43.97</b>	<b>11.82</b>	<b>3.19</b>	<b>1.06</b>	<b>19.15</b>	<b>5.79</b>	<b>6.86</b>	<b>1.30</b>	<b>5.44</b>	<b>1.42</b>	<b>100.00</b>	

Calendar Year 2011  
**Duplicated Count of Petitions Filed**  
**Criminal Offenses**

N=846

Gender		Offense Degree Level			Crime Type	Total
		<i>Felony</i>	<i>Misdemeanor</i>	Total	%	%
<b>Female</b>	<b>Crime Type</b>					
	Drug Crimes	7	3	10	5.5%	
	Person Crimes	71	13	84	46.4%	
	Property Crimes	39	22	61	33.7%	
	Public Order Crimes	6	20	26	14.4%	
	<b>Total</b>	<b>123</b>	<b>58</b>	<b>181</b>	<b>100.0%</b>	<b>21.4%</b>
<b>Male</b>	<b>Crime Type</b>					
	Drug Crimes	45	4	49	7.4%	
	Person Crimes	330	21	351	52.8%	
	Property Crimes	161	28	189	28.4%	
	Public Order Crimes	61	15	76	11.4%	
	<b>Total</b>	<b>597</b>	<b>68</b>	<b>665</b>	<b>100.0%</b>	<b>78.6%</b>
	<b>Total</b>	<b>720</b>	<b>126</b>	<b>846</b>		<b>100.0%</b>

Calendar Year 2011  
**Duplicated Count of Petitions Filed**  
**Criminal Offenses**

N=846

Race/Ethnic Origin	Crime Type	Felony	Misdemeanor	Total	Crime Type	Total
					%	%
African American	Drug	13	2	15	3.2%	
	Person	237	17	254	53.8%	
	Property	109	24	133	28.2%	
	Public Order	52	18	70	14.8%	
	<b>Total</b>	<b>411</b>	<b>61</b>	<b>472</b>	<b>100.0%</b>	<b>55.8%</b>
Asian	Drug	11	0	11	15.9%	
	Person	23	4	27	39.1%	
	Property	24	6	30	43.5%	
	Public Order	1	0	1	1.4%	
	<b>Total</b>	<b>59</b>	<b>10</b>	<b>69</b>	<b>100.0%</b>	<b>8.2%</b>
Hispanic	Drug	22	3	25	11.8%	
	Person	95	10	105	49.8%	
	Property	46	10	56	26.5%	
	Public Order	11	14	25	11.8%	
	<b>Total</b>	<b>174</b>	<b>37</b>	<b>211</b>	<b>100.0%</b>	<b>24.9%</b>
Other	Drug	3	0	3	5.2%	
	Person	34	1	35	60.3%	
	Property	12	6	18	31.0%	
	Public Order	1	1	2	3.4%	
	<b>Total</b>	<b>50</b>	<b>8</b>	<b>58</b>	<b>100.0%</b>	<b>6.9%</b>
White	Drug	3	2	5	13.9%	
	Person	12	2	14	38.9%	
	Property	9	4	13	36.1%	
	Public Order	2	2	4	11.1%	
	<b>Total</b>	<b>26</b>	<b>10</b>	<b>36</b>	<b>100.0%</b>	<b>4.3%</b>
<b>Grand Total</b>		<b>720</b>	<b>126</b>	<b>846</b>		<b>100.0%</b>

City and County of San Francisco  
Juvenile Probation Department  
2011 Duplicated Count of Petitions Sustained –Sorted Most to Least Serious  
Criminal Offense Using Department of Justice Summary Codes

<i>Petition Sustained</i>	Black		White		Hispanic		Asian		Other		Total	%
	Male	Female	Male	Female	Male	Female	Male	Female	Male	Female		
<b>Forcible Rape</b>	0	0	0	0	1	0	0	0	0	0	<b>1</b>	0.17
<b>Robbery</b>	17	1	2	0	5	2	1	1	2	0	<b>31</b>	5.21
<b>Assault</b>	40	8	0	0	24	8	4	2	4	5	<b>95</b>	15.97
<b>Burglary</b>	17	10	1	1	5	1	5	3	3	1	<b>47</b>	7.90
<b>Theft</b>	50	7	1	1	9	3	4	0	4	0	<b>79</b>	13.28
<b>Motor Vehicle Theft</b>	4	0	0	0	0	0	0	0	0	0	<b>4</b>	0.67
<b>Narcotics</b>	1	1	0	0	1	0	0	0	0	0	<b>3</b>	0.50
<b>Marijuana –Felony</b>	1	0	0	0	0	0	0	0	1	0	<b>2</b>	0.34
<b>Dangerous Drugs</b>	0	0	0	0	1	0	0	0	0	0	<b>1</b>	0.17
<b>Child Molest –Felony</b>	3	0	0	0	3	0	1	0	0	0	<b>7</b>	1.18
<b>Sexual Battery</b>	0	0	1	0	1	0	0	0	1	0	<b>3</b>	0.50
<b>Weapons –Felony</b>	34	1	0	0	6	0	2	0	1	0	<b>44</b>	7.39
<b>Other Felonies</b>	10	3	1	1	20	2	4	0	2	0	<b>43</b>	7.23
Assault Battery	31	11	0	0	16	5	3	0	2	2	<b>70</b>	11.76
Petty Theft	18	12	3	1	4	3	0	0	2	2	<b>45</b>	7.56
Defrauding Innkeeper	8	3	0	1	3	1	1	0	1	0	<b>18</b>	3.03
Marijuana –Misdemeanor	0	0	0	1	0	0	0	0	0	0	<b>1</b>	0.17
Prostitution	0	1	0	0	0	0	0	0	0	0	<b>1</b>	0.17
Contribute Delinquency	1	0	0	0	0	0	0	0	0	0	<b>1</b>	0.17
Drunk	1	0	0	0	0	1	0	0	0	0	<b>2</b>	0.34
Disturbing Peace	2	3	0	0	0	2	0	0	1	0	<b>8</b>	1.34
Vandalism	9	0	4	0	10	2	1	0	1	0	<b>27</b>	4.54
Trespassing	7	1	0	0	0	0	0	0	0	0	<b>8</b>	1.34
Weapons –Misdemeanor	5	2	0	0	1	1	0	0	0	0	<b>9</b>	1.51
Driving Under the Influence	0	0	0	0	1	0	0	0	0	1	<b>2</b>	0.34
Selected Traffic	0	0	1	0	0	0	0	0	0	0	<b>1</b>	0.17
Joy Riding	2	1	0	0	2	0	1	0	2	1	<b>9</b>	1.51
Glue Sniffing	0	0	1	0	0	0	0	0	0	0	<b>1</b>	0.17
Other Misdemeanors	3	7	1	1	2	5	0	0	0	0	<b>19</b>	3.19
Burglary Tools	2	0	0	0	0	0	0	0	0	0	<b>2</b>	0.34
Sex Crimes –Misdemeanor	1	1	0	0	0	0	0	0	0	0	<b>2</b>	0.34
Escape	1	0	0	0	1	0	0	0	0	0	<b>2</b>	0.34
Miscellaneous Traffic	1	0	0	0	2	0	1	0	0	0	<b>4</b>	0.67
Other Drugs -Misdemeanor	1	0	0	0	1	1	0	0	0	0	<b>3</b>	0.50
<b>Total</b>	<b>270</b>	<b>73</b>	<b>16</b>	<b>7</b>	<b>119</b>	<b>37</b>	<b>28</b>	<b>6</b>	<b>27</b>	<b>12</b>	<b>595</b>	100.00
<b>%</b>	<b>45.38</b>	<b>12.27</b>	<b>2.69</b>	<b>1.18</b>	<b>20.00</b>	<b>6.22</b>	<b>4.71</b>	<b>1.01</b>	<b>4.54</b>	<b>2.02</b>	<b>100.00</b>	

Calendar Year 2011  
**Duplicated Count of Petitions Sustained**  
**Criminal Offenses**

N=595

Gender		Offense Degree Level			Crime Type	Total
		<i>Felony</i>	<i>Misdemeanor</i>	Total	%	%
<b>Female</b>	<b>Crime Type</b>					
	Drug Crimes	1	2	3	2.2%	
	Person Crimes	27	19	46	34.1%	
	Property Crimes	18	37	55	40.7%	
	Public Order Crimes	7	24	31	23.0%	
	<b>Total</b>	<b>53</b>	<b>82</b>	<b>135</b>	<b>100.0%</b>	<b>22.7%</b>
<b>Male</b>						
	Drug Crimes	5	3	8	1.7%	
	Person Crimes	111	55	166	36.1%	
	Property Crimes	98	93	191	41.5%	
	Public Order Crimes	73	22	95	20.7%	
	<b>Total</b>	<b>287</b>	<b>173</b>	<b>460</b>	<b>100.0%</b>	<b>77.3%</b>
	<b>Total</b>	<b>340</b>	<b>255</b>	<b>595</b>		<b>100.0%</b>

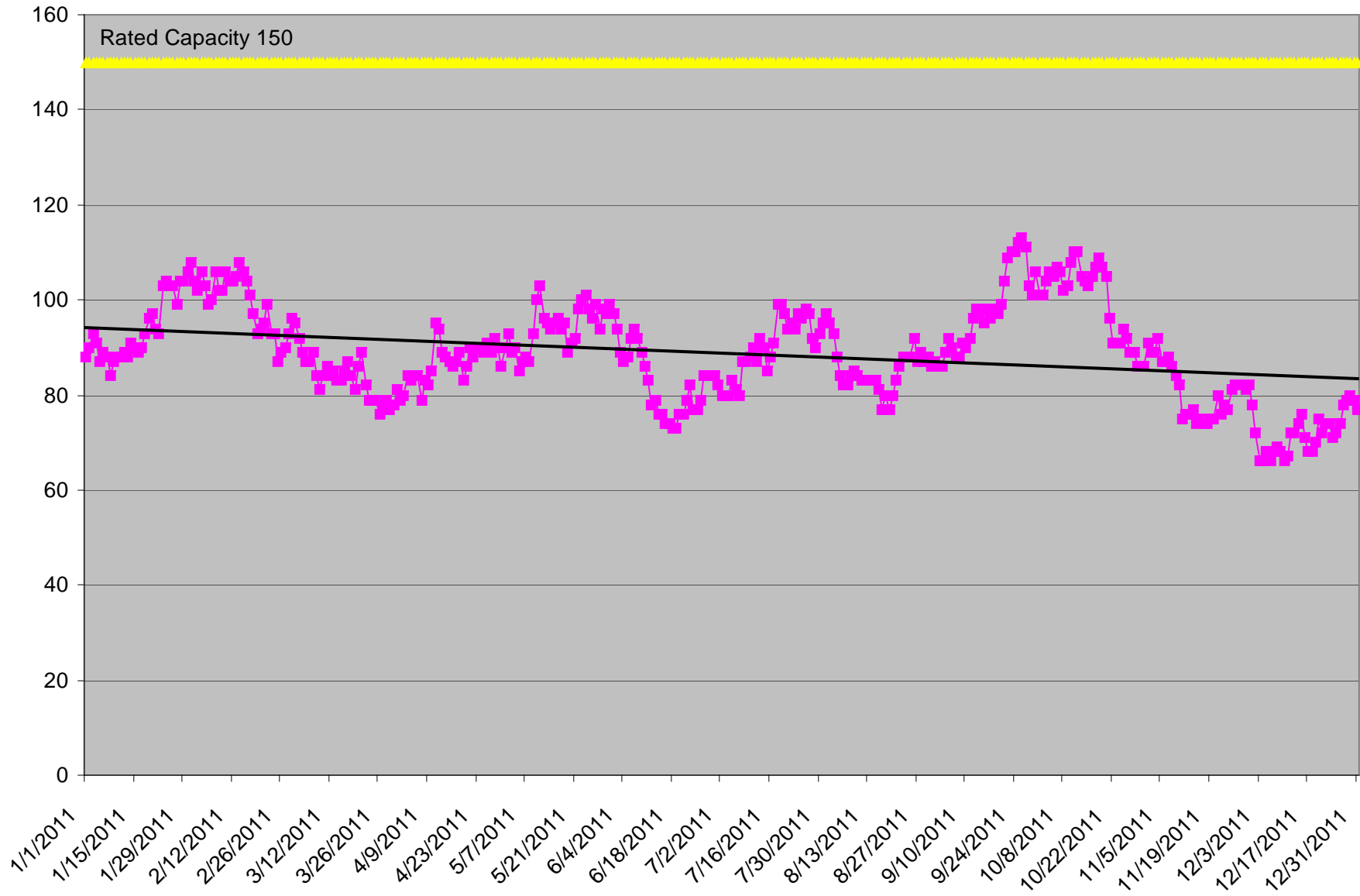
Calendar Year 2011  
**Duplicated Count of Petitions Sustained**  
**Criminal Offenses**

N=595

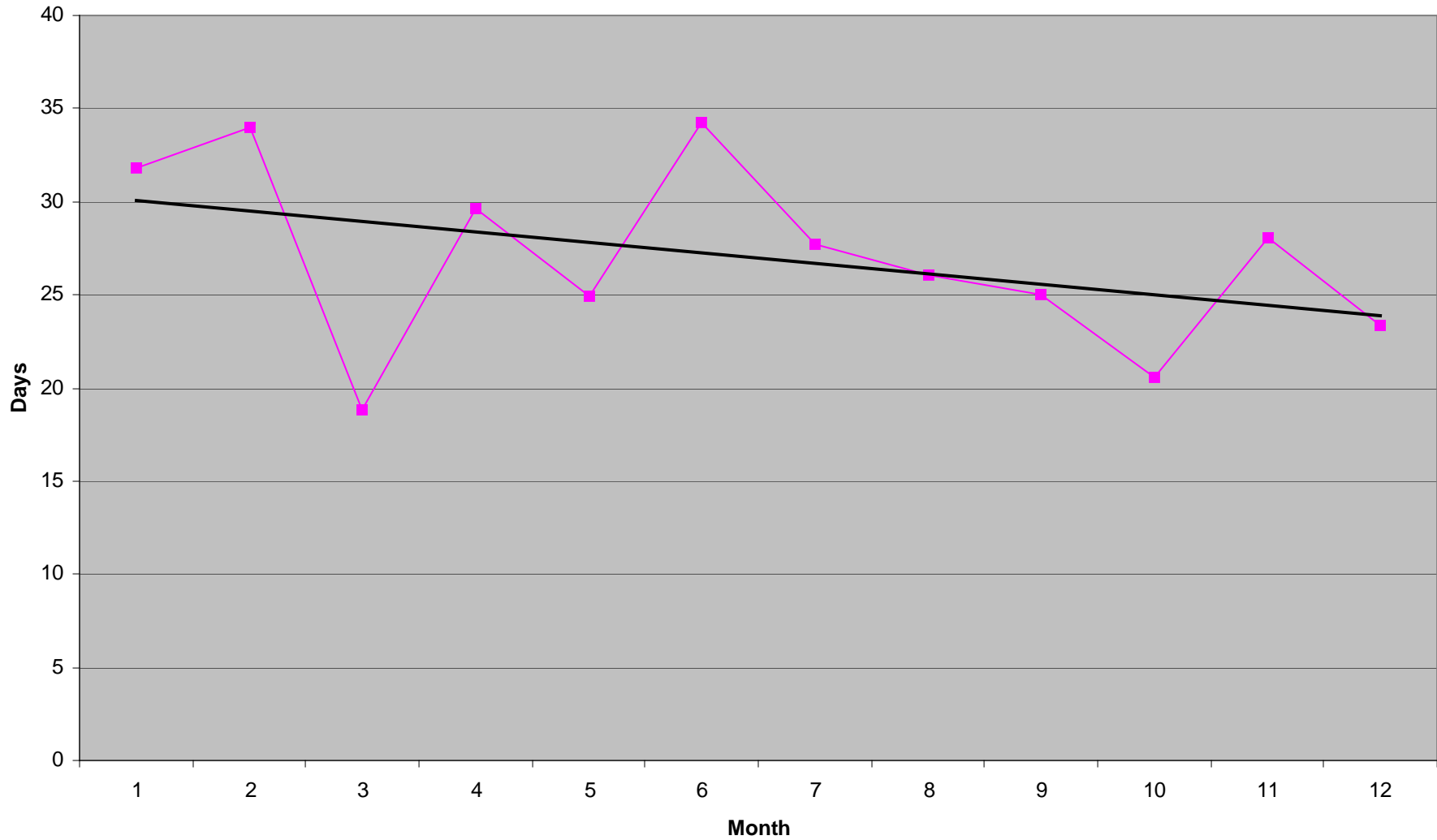
Race/Ethnic Origin	Crime Type	Felony	Misdemeanor	Total	Crime Type	Total
					%	%
African American	Drug	3	1	4	1.2%	
	Person	70	46	116	33.8%	
	Property	79	73	152	44.3%	
	Public Order	46	25	71	20.7%	
	<b>Total</b>	<b>198</b>	<b>145</b>	<b>343</b>	<b>100.0%</b>	<b>57.6%</b>
Asian	Drug	0	0	0	0.0%	
	Person	9	3	12	35.3%	
	Property	6	9	15	44.1%	
	Public Order	6	1	7	20.6%	
	<b>Total</b>	<b>21</b>	<b>13</b>	<b>34</b>	<b>100.0%</b>	<b>5.7%</b>
Hispanic	Drug	2	2	4	2.6%	
	Person	44	21	65	41.7%	
	Property	19	28	47	30.1%	
	Public Order	24	16	40	25.6%	
	<b>Total</b>	<b>89</b>	<b>67</b>	<b>156</b>	<b>100.0%</b>	<b>26.2%</b>
Other	Drug	1	0	1	2.6%	
	Person	12	4	16	41.0%	
	Property	8	9	17	43.6%	
	Public Order	3	2	5	12.8%	
	<b>Total</b>	<b>24</b>	<b>15</b>	<b>39</b>	<b>100.0%</b>	<b>6.6%</b>
White	Drug	0	2	2	8.7%	
	Person	3	0	3	13.0%	
	Property	4	11	15	65.2%	
	Public Order	1	2	3	13.0%	
	<b>Total</b>	<b>8</b>	<b>15</b>	<b>23</b>	<b>100.0%</b>	<b>3.9%</b>
<b>Grand Total</b>		<b>340</b>	<b>255</b>	<b>595</b>		<b>100.0%</b>

**San Francisco Juvenile Probation Department**  
**Calendar Year 2011**  
**Juvenile Hall Daily Population**  
**Average 89**

Average  
Male 76  
Female 13



**San Francisco Juvenile Probation Department  
Calendar Year 2011  
Juvenile Hall Monthly Average Length of Stay  
N=1,146  
Average 27 days**





# San Francisco Juvenile Court Processing of Law Violation Cases

## Referrals for Criminal Offenses —Calendar Year 2011

Referrals for Criminal Offenses —Calendar Year 2011					Ward Probation			221	26.12%		
<div>Referrals1,573</div> <div><div>Petition Filed84653.78%</div><div>No Petition Filed72746.22%</div></div>					Out of Home Placement					97	11.47%
					Non-Ward Probation (725a WI)					24	2.84%
					Informal Probation (654 WI)					106	12.53%
					Log Cabin Ranch					19	2.25%
					Department Juvenile Justice					1	0.12%
					Remand Adult Court					2	0.24%
					Petition Dismissed					76	8.98%
					Transferred Out of County					114	13.48%
					Dispositions*						
Juvenile Hall Bookings					736	46.79%	<div>Note: 55 (6.50%) charges on other petitions were Combined and only one disposition resulted. Waiting Adjudication/Disposition: 131(15.48%)</div>				
Non- Juvenile Hall Bookings					837	53.21%	<div>*Includes Petition Outcomes dated as of 2/29/2012 and it will not match the</div>				

*Note: 55 (6.50%) charges on other petitions were Combined and only one disposition resulted.  
Waiting Adjudication/Disposition: 131(15.48%)*

*\*Includes Petition Outcomes dated as of 2/29/2012 and it will not match the outcomes of page 2 (all referrals outcome). Does not include violation of probation and criminal offense petitions filed prior to 2011.*

## San Francisco Juvenile Justice System Terms:

**Arrest:** The taking of a minor into custody by the police, when the police believe that the minor has committed a violation of a criminal law. A minor may also be taken into custody by the police for an alleged probation violation or pursuant to a warrant issued by a court. While the use of the term arrest is commonplace, technically minors are not arrested; they are detained or taken into temporary custody by the police.

**Case:** The opening of a file by any agency for a minor who is being processed by that agency because the minor is alleged to have committed an act that violated a criminal law or an act that is illegal only for minors.

**Citation:** The issuance of a written document to a minor by the police, informing the minor of an offense that the minor is alleged to have committed and ordering the minor to appear before a probation officer on a certain date and time. The minor will not be kept in the custody of the police after the citation is issued.

**Detention (secure):** When a minor is placed in secure custody at Juvenile Hall and is remains overnight (technically, is arrested on one day and remains in JH at 6 a.m. the next).

**Home Detention (non-secure):** When a minor is released to her or his home, rather than put into secure detention, but with strict conditions placed on the minor by the Juvenile Court or the Juvenile Probation Department.

**Dismissal:** When formal charges against a minor, contained in a petition to the Juvenile Court, are dismissed and therefore the minor is not brought under the formal jurisdiction of the Court.

**Disposition:** A decision by the Juvenile Court with respect to what placement/supervision a minor who is made a ward of the Court will receive. A minor placed under the formal supervision of the Court is made "a ward of the Court."

**Law violation:** A charge that a minor has committed an act that would be a criminal act if committed by an adult.

**Booking:** The process of admitting a person to Juvenile Hall.

**Referral:** The Juvenile Probation Department counts as a referral all separate instances when a minor is cited or brought to the JPD. It uses the term *contact* interchangeably with referral and indicates that each contact represents a "unit of work" for the Department. Referrals include contacts beyond those related to arrests, citations, bookings, or cases.

**Petition:** A formal statement by the District Attorney's Office alleging that the juvenile is delinquent for committing specified offense. **Petition Sustained:** Charges are found true.

**Most serious charge:** Of all the charges on the petition, the charge ranked most serious by the California Department of Justice hierarchy, which carries the most jail time.

# **APPENDIX**

# **2011 Profile of Girls**

San Francisco Juvenile Probation Department  
Profile of Girls  
Unduplicated Count of Juvenile Hall Bookings by Geographical Residence of Youth  
Criminal Offenses

Zip Code	Description	Count	%
94102	Tenderloin/Western Addition	4	2.74%
94103	South of Market	4	2.74%
94107	Potrero Hill	6	4.11%
94109	Russian Hill/Polk Gulch	2	1.37%
94110	Inner Mission	9	6.16%
94112	Ingleside/Excelsior	14	9.59%
94114	Castro/Eureka Valley	1	0.68%
94115	Western Addition	6	4.11%
94116	Parkside	1	0.68%
94117	Haight Ashbury/L Western Addition	4	2.74%
94118	Inner Richmond	2	1.37%
94122	Sunset	1	0.68%
94124	Bayview/Hunters Point	31	21.23%
94130	Treasure Island	1	0.68%
94131	Twin Peaks/Glen Park	2	1.37%
94132	Lake Merced	4	2.74%
94133	North Beach	2	1.37%
94134	Visitacion Valley/Portola	11	7.53%
	<i>Non-San Francisco</i> <sup>1</sup>	41	28.08%
	<b>Total</b>	<b>146</b>	<b>71.92%</b>
<sup>1</sup> <i>Non-San Francisco</i>		Count	%
	OAKLAND	9	21.95%
	SACRAMENTO	5	12.20%
	DALY CITY	5	12.20%
	VALLEJO	3	7.32%
	ANTIOCH	3	7.32%
	HAYWARD	2	4.88%
	SAN MATEO	2	4.88%
	RICHMOND	2	4.88%
	BELMONT	1	2.44%
	BENICIA	1	2.44%
	EL SOBRANTE	1	2.44%
	FAIRFIELD	1	2.44%
	FRENCH CAMP	1	2.44%
	NORTH HOLLYWOOD	1	2.44%
	WOODLAND	1	2.44%
	RENO	1	2.44%
	SAN RAMON	1	2.44%
	MARIN CITY	1	2.44%
	<b>Total</b>	<b>41</b>	<b>100.00%</b>

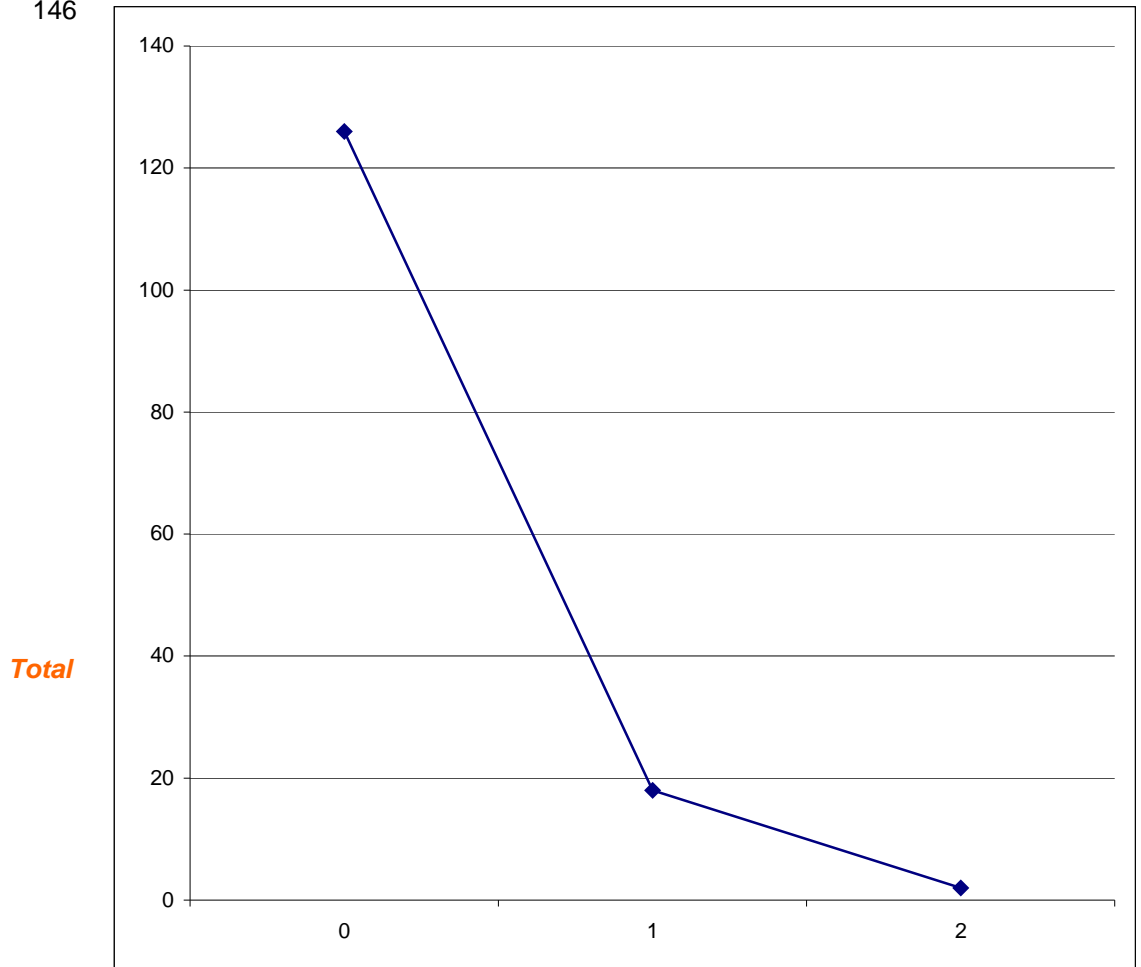
San Francisco Juvenile Probation Department  
Profile of Girls

*Unduplicated Count of Juvenile Hall Bookings*

Analysis of the Prior Arrests during 2011 For Criminal Offenses  
of Youth Admitted to Juvenile Hall in Calendar Year 2011

**N=146**

Prior Arrests	Total
0	126
1	18
2	2
Total	146



**Number of Prior Arrests for Criminal Offenses during 2011**

Arrested		
one time	126	86.30%
more than 1	20	13.70%
Total	146	100.00%

Recidivist Rate

Calendar Year 2011  
San Francisco Juvenile Probation Department  
Profile of Girls  
Unduplicated Count of Juvenile Hall Bookings  
Criminal Offenses  
N=146

Race/Ethnic Origin	Count	%
AFRICAN AMERICAN	87	59.59%
CHINESE	4	2.74%
FILIPINO	2	1.37%
HISPANIC	36	24.66%
OTHER	2	1.37%
OTHER ASIAN	2	1.37%
PACIFIC ISLANDER	1	0.68%
SAMOAN	5	3.42%
WHITE	7	4.79%
<b>Total</b>	<b>146</b>	<b>100.00%</b>

Age on 2/29/12	Count	%
12	1	0.68%
13	7	4.79%
14	12	8.22%
15	32	21.92%
16	26	17.81%
17	39	26.71%
18	27	18.49%
Over 18	2	1.37%
<b>Total</b>	<b>146</b>	<b>100.00%</b>

Calendar Year 2011  
 Profile of Girls  
 Referral Source  
 Duplicated Count of Juvenile Hall Bookings  
 Criminal Offenses  
 N=168

<b>Law Enforcement Referrals</b>		
<b>Local</b>	Number	Percent
San Francisco Police	144	
<i>Total</i>	144	85.71%
<b>Out-of-County Police Departments</b>		
Police Department	0	
<i>Total</i>	0	0.00%
<b>State</b>		
California Highway Patrol	0	
California State Police	0	
<i>Total</i>	0	0.00%
<b>Federal</b>		
Federal Park Police	0	
<i>Total</i>	0	0.00%
<b>Total Law Enforcement</b>	<b>144</b>	<b>85.71%</b>
<b>Court Referrals</b>	Number	Percent
Alameda	6	
Los Angeles	2	
San Bernardino	1	
Sacramento	1	
San Diego	1	
San Mateo	9	
Tulare	1	
<i>Total Court</i>	<b>21</b>	<b>12.50%</b>
<b>Department/Agency Referrals</b>	Number	Percent
Probation Officer	3	
<b>Total Department/Agency</b>	<b>3</b>	<b>1.79%</b>
<b>Total Referrals - All Sources</b>	<b>168</b>	<b>100.00%</b>



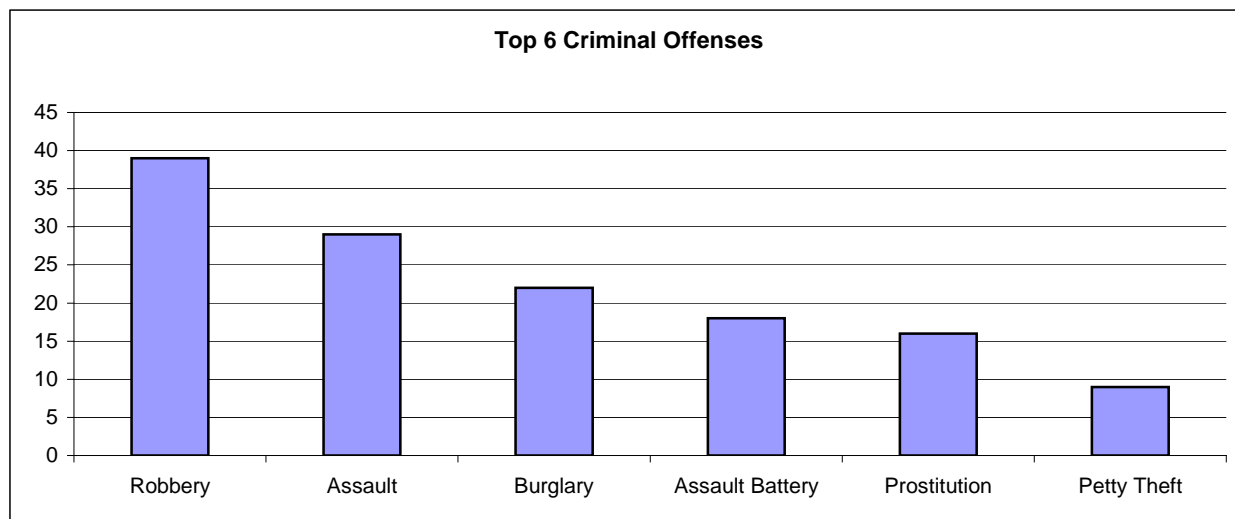
## Profile of Girls

2011 Duplicated Count of Juvenile Hall Bookings –Sorted Most to Least Serious  
Criminal Offense Using Department of Justice Summary Codes

<i>Detention Reason</i>	<b>African American</b>	<b>White</b>	<b>Hispanic</b>	<b>Asian</b>	<b>Other</b>	<b>Total</b>	<b>%</b>
<b>Robbery</b>	21	2	10	4	2	<b>39</b>	23.21
<b>Assault</b>	12	1	7	3	6	<b>29</b>	17.26
<b>Kidnapping</b>	0	0	2	0	0	<b>2</b>	1.19
<b>Burglary</b>	15	2	4	1	0	<b>22</b>	13.10
<b>Theft</b>	3	0	1	0	0	<b>4</b>	2.38
<b>Motor Vehicle Theft</b>	1	0	1	0	0	<b>2</b>	1.19
<b>Narcotics</b>	3	0	1	0	0	<b>4</b>	2.38
<b>Marijuana –Felony</b>	0	1	0	0	0	<b>1</b>	0.60
<b>Sexual Battery</b>	1	0	0	0	0	<b>1</b>	0.60
<b>Weapons –Felony</b>	2	0	2	0	0	<b>4</b>	2.38
<b>Arson</b>	2	0	2	0	0	<b>4</b>	2.38
<b>Other Felonies</b>	1	0	2	1	0	<b>4</b>	2.38
Assault Battery	12	1	4	1	0	<b>18</b>	10.71
Petty Theft	7	0	2	0	0	<b>9</b>	5.36
Defrauding Innkeeper	1	0	0	0	0	<b>1</b>	0.60
Prostitution	13	1	2	0	0	<b>16</b>	9.52
Drun	0	0	1	0	0	<b>1</b>	0.60
Disturbing Peace	1	0	1	0	0	<b>2</b>	1.19
Weapons –Misdemeanor	1	0	0	0	0	<b>1</b>	0.60
Other Misdemeanors	2	0	0	0	0	<b>2</b>	1.19
Sex Crimes –Misdemeanor	1	0	0	0	0	<b>1</b>	0.60
Other Drugs –Misdemeanor	1	0	0	0	0	<b>1</b>	0.60
<b>Total</b>	<b>100</b>	<b>8</b>	<b>42</b>	<b>10</b>	<b>8</b>	<b>168</b>	100.00

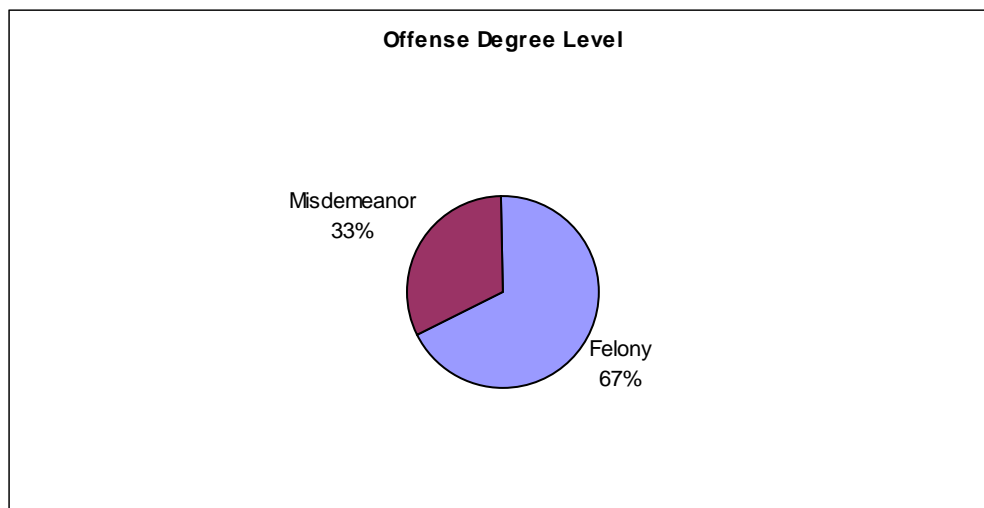
## Top 6 Criminal Offenses

Robbery	39	29.32%
Assault	29	21.80%
Burglary	22	16.54%
Assault Battery	18	13.53%
Prostitution	16	12.03%
Petty Theft	9	6.77%
<b>Total</b>	<b>133</b>	<b>100.00%</b>



Profile of Girls  
 Duplicated Count of Juvenile Hall Bookings  
 Criminal Offenses  
 N=168

Race/Ethnic Origin	Crime Type	Felony	Misdemeanor	Total	%	%
African American	Drug	3	1	4	4.0%	
	Person	35	13	48	48.0%	
	Property	19	10	29	29.0%	
	Public Order	2	17	19	19.0%	
	<b>Total</b>	<b>59</b>	<b>41</b>	<b>100</b>	<b>100.0%</b>	<b>59.5%</b>
Asian	Drug	0	0	0	0.0%	
	Person	8	1	9	90.0%	
	Property	0	1	1	10.0%	
	Public Order	0	0	0	0.0%	
	<b>Total</b>	<b>8</b>	<b>2</b>	<b>10</b>	<b>100.0%</b>	<b>6.0%</b>
Hispanic	Drug	1	0	1	2.4%	
	Person	19	4	23	54.8%	
	Property	9	2	11	26.2%	
	Public Order	3	4	7	16.7%	
	<b>Total</b>	<b>32</b>	<b>10</b>	<b>42</b>	<b>100.0%</b>	<b>25.0%</b>
Other	Drug	0	0	0	0.0%	
	Person	8	0	8	100.0%	
	Property	0	0	0	0.0%	
	Public Order	0	0	0	0.0%	
	<b>Total</b>	<b>8</b>	<b>0</b>	<b>8</b>	<b>100.0%</b>	<b>4.8%</b>
White	Drug	1	0	1	12.5%	
	Person	3	1	4	50.0%	
	Property	2	0	2	25.0%	
	Public Order	0	1	1	12.5%	
	<b>Total</b>	<b>6</b>	<b>2</b>	<b>8</b>	<b>100.0%</b>	<b>4.8%</b>
<b>Grand Total</b>		<b>113</b>	<b>55</b>	<b>168</b>		<b>100.0%</b>



Profile of Girls  
Duplicated Count of Juvenile Hall Bookings  
Criminal Offenses  
N=168

Length of Stay (Days)	Count	%
1	10	5.95%
2	22	13.10%
3	14	8.33%
4	6	3.57%
5	11	6.55%
6	12	7.14%
7	7	4.17%
8	6	3.57%
9	10	5.95%
10	6	3.57%
11	8	4.76%
12	2	1.19%
13	3	1.79%
14	4	2.38%
15	1	0.60%
16	6	3.57%
17	1	0.60%
18	1	0.60%
19	3	1.79%
20	3	1.79%
21	2	1.19%
22	1	0.60%
23	2	1.19%
25	1	0.60%
28	2	1.19%
29	1	0.60%
30	2	1.19%
31-60 days	15	8.93%
Over 60 days	6	3.57%
<b>Total</b>	<b>168</b>	<b>100.00%</b>
Average Length of Stay	16 days	

Calendar Year 2011  
San Francisco Juvenile Probation Department  
Profile of Girls  
Unduplicated Count of Juvenile Hall Bookings (All Referrals)  
N=179<sup>1</sup>

Race/Ethnic Origin	Count	%
AFRICAN AMERICAN	108	60.34%
CHINESE	4	2.23%
FILIPINO	3	1.68%
GUAMANIAN	1	0.56%
HISPANIC	41	22.91%
OTHER	2	1.12%
OTHER ASIAN	2	1.12%
PACIFIC ISLANDER	1	0.56%
SAMOAN	7	3.91%
WHITE	10	5.59%
<b>Total</b>	<b>179</b>	<b>100.00%</b>

Age on 2/29/12	Count	%
12	1	0.56%
13	6	3.35%
14	13	7.26%
15	34	18.99%
16	35	19.55%
17	48	26.82%
18	36	20.11%
Over 18	6	3.35%
<b>Total</b>	<b>179</b>	<b>100.00%</b>

<sup>1</sup> Includes Court Orders, Violation of Probation, Home Detention Failures, Warrants, Transfers from other counties, Placement Failures plus all criminal offenses

Calendar Year 2011  
San Francisco Juvenile Probation Department  
Profile of Girls  
Unduplicated Count of All Juvenile Hall Bookings  
By Geographical Residence of Youth  
N=179

SF Zip Code		Count	%
94102	Tenderloin/Western Addition	5	2.79%
94103	South of Market	6	3.35%
94104	Financial District	0	0.00%
94105	Rincon Hill	0	0.00%
94107	Potrero Hill	7	3.91%
94108	Chinatown	0	0.00%
94109	Russian Hill/Polk Gulch	2	1.12%
94110	Inner Mission	10	5.59%
94111	Telegraph Hill/Waterfront	0	0.00%
94112	Ingleside/Excelsior	18	10.06%
94114	Castro/Eureka Valley	1	0.56%
94115	Western Addition	8	4.47%
94116	Parkside	1	0.56%
94117	Haight Ashbury/L Western Addition	4	2.23%
94118	Inner Richmond	3	1.68%
94121	Outer Richmond	1	0.56%
94122	Sunset	1	0.56%
94123	Marina/Cow Hollow	0	0.00%
94124	Bayview/Hunters Point	41	22.91%
94127	Miraloma/Sunnyside	0	0.00%
94130	Treasure Island	1	0.56%
94131	Twin Peaks/Glen Park	3	1.68%
94132	Lake Merced	4	2.23%
94133	North Beach	2	1.12%
94134	Visitacion Valley/Portola	15	8.38%
	<i>Non-San Francisco and Unavailable</i> <sup>1</sup>	46	25.70%
	<b>Total</b>	<b>179</b>	<b>100.00%</b>
	<b><sup>1</sup> Non-San Francisco and Unavailable</b>	<b>Count</b>	<b>%</b>
	OAKLAND	10	21.74%
	SACRAMENTO	6	13.04%
	DALY CITY	5	10.87%
	VALLEJO	3	6.52%
	ANTIOCH	3	6.52%
	SAN MATEO	2	4.35%
	RICHMOND	2	4.35%
	HAYWARD	2	4.35%
	OTHER CITIES <sup>2</sup>	13	28.26%
	<b>Total</b>	<b>46</b>	<b>100.00%</b>

<sup>2</sup>Account for 13 cities with a minimum count of 1.

San Francisco Juvenile Probation Department  
Calendar Year 2011  
Profile of Girls  
Duplicated Count of All Juvenile Hall Bookings by Offense Degree Level  
N=259

Offense Degree	Offense	Count	%	
<b>FELONY</b>	ARSON	4	1.54%	
	ASSAULT	29	11.20%	
	BURGLARY	19	7.34%	
	KIDNAPPING	2	0.77%	
	MARIJUANA	1	0.39%	
	MOTOR VEHICLE THEFT	2	0.77%	
	NARCOTICS	4	1.54%	
	OTHER FELONIES	4	1.54%	
	OTHER SEX LAW VIOLATIONS	1	0.39%	
	ROBBERY	39	15.06%	
	THEFT	4	1.54%	
	WEAPONS	4	1.54%	
	<b>Total</b>	<b>113</b>		<b>43.63%</b>
<b>MISDEMEANOR</b>	ASSAULT BATTERY	18	6.95%	
	BURGLARY	3	1.16%	
	DISTURBING PEACE	2	0.77%	
	CHANGE OF PLACEMENT/PLACEMENT FAILURE	11	4.25%	
	DRUNK	1	0.39%	
	OTHER DRUGS	1	0.39%	
	OTHER MISDEMEANORS	3	1.16%	
	OTHER THEFT	1	0.39%	
	PETTY THEFT	10	3.86%	
	PROBATION VIOLATION	6	2.32%	
	PROSTITUTION	16	6.18%	
	VIOLATION(S) OF HOME SUPERVISION CONDITION	11	4.25%	
	WEAPONS	1	0.39%	
	<b>Total</b>	<b>84</b>		<b>32.43%</b>
<b>OTHER</b>	COURT ORDER	11	4.25%	
	BENCH WARRANT	17	6.56%	
	ARREST WARRANT	32	12.36%	
	WARRANT FROM ANOTHER COUNTY	2	0.77%	
	<b>Total</b>	<b>62</b>		<b>23.94%</b>
<b>Grand Total</b>		<b>259</b>	<b>100.00%</b>	<b>100.00%</b>

# **2011 Probation Violations**

Calendar Year 2011  
San Francisco Juvenile Probation Department  
Unduplicated Count of Probation Violation Petitions Filed  
N=131

Gender	Count	%
FEMALE	25	19.08%
MALE	106	80.92%
<b>Total</b>	<b>131</b>	<b>100.00%</b>

Race/Ethnic Origin	Count	%
AFRICAN AMERICAN	66	50.38%
AMERICAN INDIAN	1	0.76%
CHINESE	2	1.53%
FILIPINO	4	3.05%
HISPANIC	38	29.01%
OTHER	1	0.76%
PACIFIC ISLANDER	3	2.29%
SAMOAN	9	6.87%
WHITE	7	5.34%
<b>Total</b>	<b>131</b>	<b>100.00%</b>

Age on 2/29/12	Count	%
13	1	0.76%
14	2	1.53%
15	12	9.16%
16	22	16.79%
17	41	31.30%
18	35	26.72%
Over 18	18	13.74%
<b>Total</b>	<b>131</b>	<b>100.00%</b>



Calendar Year 2011  
San Francisco Juvenile Probation Department  
Unduplicated Count of Probation Violation Petitions Filed  
N=131

Zip Code		Count	%
94102	Tenderloin/Western Addition	5	3.82%
94103	South of Market	3	2.29%
94105	Rincon Hill	0	0.00%
94107	Potrero Hill	5	3.82%
94108	Chinatown	0	0.00%
94109	Russian Hill/Polk Gulch	2	1.53%
94110	Inner Mission	17	12.98%
94111	Telegraph Hill/Waterfront	0	0.00%
94112	Ingleside/Excelsior	10	7.63%
94114	Castro/Eureka Valley	0	0.00%
94115	Western Addition	6	4.58%
94116	Parkside	1	0.76%
94117	Haight Ashbury/L Western Addition	1	0.76%
94118	Inner Richmond	1	0.76%
94121	Outer Richmond	4	3.05%
94122	Sunset	0	0.00%
94123	Marina/Cow Hollow	0	0.00%
94124	Bayview/Hunters Point	46	35.11%
94127	Miraloma/Sunnyside	1	0.76%
94130	Treasure Island	3	2.29%
94131	Twin Peaks/Glen Park	1	0.76%
94132	Lake Merced	3	2.29%
94133	North Beach	3	2.29%
94134	Visitacion Valley/Portola	12	9.16%
	<i>Non-San Francisco and Unavailable</i> <sup>1</sup>	7	5.34%
	<b>Total</b>	<b>131</b>	<b>94.66%</b>
	<sup>1</sup> <b>Non-San Francisco and Unavailable</b>	<b>Count</b>	<b>%</b>
	DALY CITY	1	14.29%
	HAYWARD	1	14.29%
	OAKLAND	1	14.29%
	SACRAMENTO	2	28.57%
	SAN MATEO	1	14.29%
	SOUTH SAN FRANCISCO	1	14.29%
	<b>Total</b>	<b>7</b>	<b>100.00%</b>

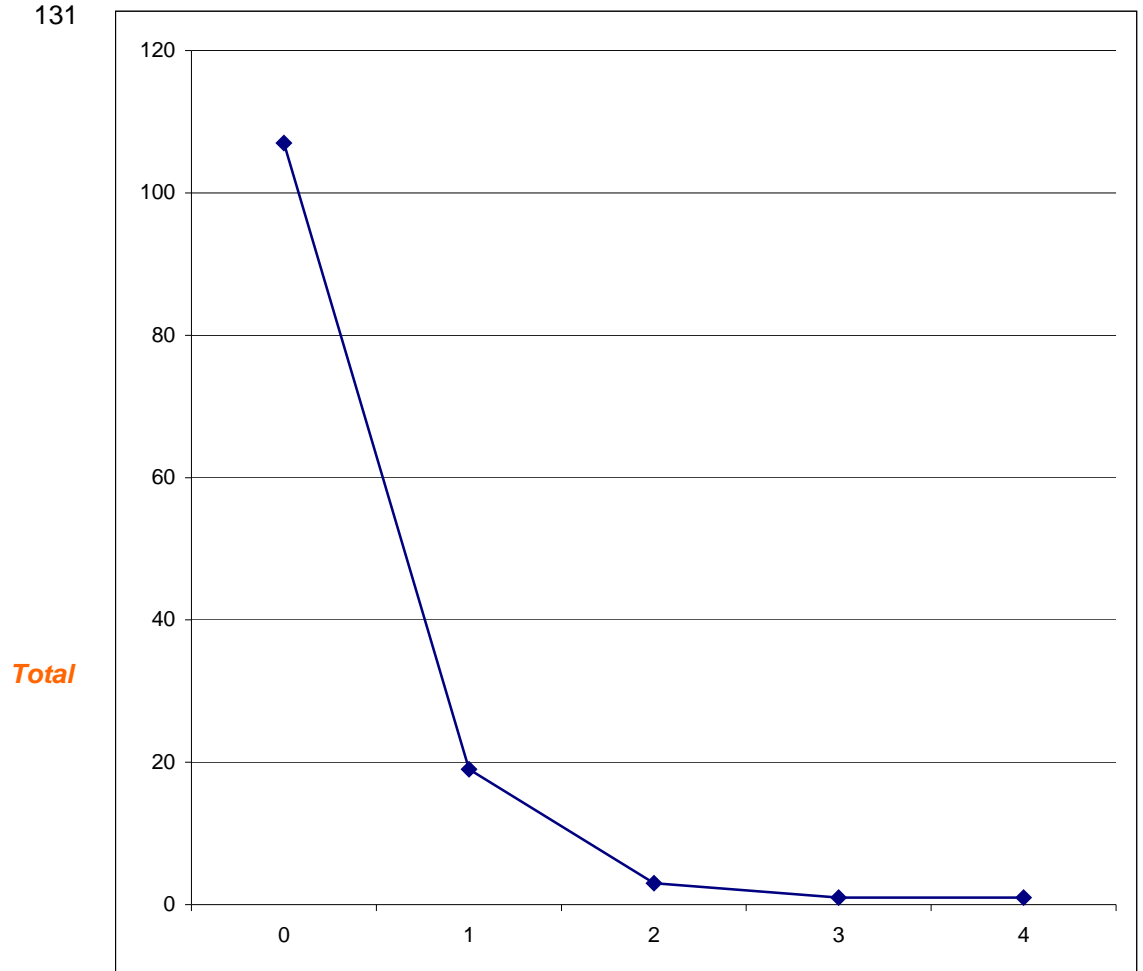
# San Francisco Juvenile Probation Department

## *Unduplicated Count of Petitions Filed For Probation Violation*

Analysis of Prior Petitions Filed For Probation Violation  
Calendar Year 2011

**N=131**

Prior Petitions	Total
0	107
1	19
2	3
3	1
4	1
Total	131

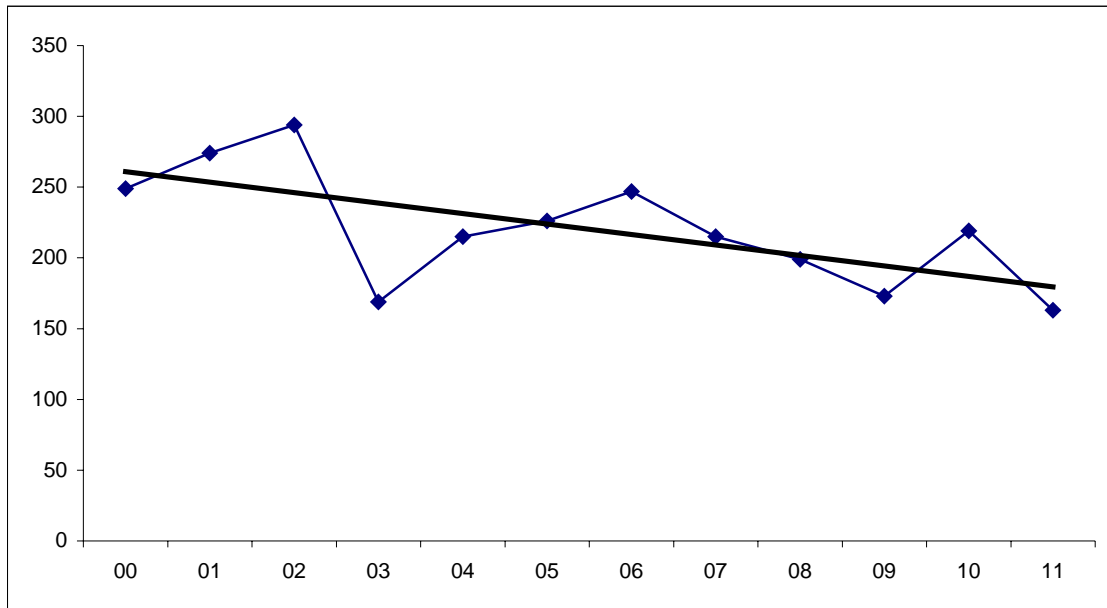


**Number of Prior Petitions for Probation Violation During 2011**

Prior Petitions		
one	107	81.68%
more than 1	24	18.32%
Total	131	100.00%

*Recidivist Rate*

San Francisco Juvenile Probation Department  
 Duplicated Count of Petitions Filed For Probation Violation  
 2000-2011



Year	Petitions
00	249
01	274
02	294
03	169
04	215
05	226
06	247
07	215
08	199
09	173
10	219
11	163

Gender	2000	2001	2002	2003	2004	2005	2006	2007	2008	2009	2010	2011
Male	197	205	229	135	164	183	202	178	146	146	176	132
Female	52	69	65	34	51	43	45	37	53	27	43	31
Total	249	274	294	169	215	226	247	215	199	173	219	163

# San Francisco Juvenile Court Processing of Probation Violation Referrals

Calendar Year 2011

			Ward Probation	22	13.50%
			Out of Home Placement	21	12.88%
			Non-Ward Probation (725a WI)	1	0.61%
			Log Cabin Ranch	6	3.68%
			Petition Dismissed	51	31.29%
			Transferred Out of County	3	1.84%
<i>Note: 2(1.23%) charges on other petitions were Combined and only one disposition resulted. Waiting Adjudication/Disposition: 57(34.97%)</i>					
<i>*Includes Petition Outcomes dated as of 2/29/2012.</i>					
Referrals	169	Petitions Filed 163	Dispositions*		
		Bookings –Petitions Filed (35 21.47%)			
		Non-Bookings – Petitions Filed (128 78.53%)			
Juvenile Hall Bookings		42	24.85%		
Non- Juvenile Hall Bookings		127	75.15%		