

City and County of San Francisco



Juvenile Probation Department

Monthly Report for June 2012

Presented to the Juvenile Probation Commission

July 10th, 2012

William P. Siffermann
Chief Probation Officer

Prepared by Jose Luis Perla
Information Technology Director
(415) 753-7686
jose.perla@sfgov.org

Table of Contents

Section I Summary Reports

Juvenile Hall, Log Cabin Ranch Summary Statistics	1
Probation Services Summary and California Youth Authority Statistics.....	2
Active Cases by Units.....	3

Section II Current Month General Detail

Probation Referrals, Juvenile Admissions And Average Daily Population	4
Juvenile Hall Admissions and Average Daily Population.....	5
Commitments to out-of-home placement	6
Commitments to California Youth Authority	7
Log Cabin Ranch Admissions and Average Daily Population.....	8
Probation Referrals	9
Juvenile Hall And Log Cabin Ranch Incident Report	10
Bay Area Resident Juvenile Hall Comparison	11
Juvenile Hall Admissions	12
Juvenile Hall Detainees by Detention Reason.....	13
Juvenile Hall Average Daily Population by Rated Capacity	14
Juvenile Hall Average Length of Stay	15

Section III Demographics

Juvenile Hall Detainees by Sex and Race/Ethnic Origin.....	16
Juvenile Hall Detainees by Age.....	17
Juvenile Hall Detainees by Age and Sex	18
Juvenile Hall Detainees by Geographic Residence of Youth.....	19
Juvenile Hall Detainees by Race/Ethnic Origin and Sex.....	20

Section IV
Historical Information

2004-2006 Probation Referrals21
2004-2006 Juvenile Hall Admissions22
2004-2006 Juvenile Hall Average Daily Population23



Section I

Summary Reports

Summary Report for the Month of June 2012

Juvenile Hall	<i>May 2011</i>	<i>May 2012</i>	<i>June 2011</i>	<i>June 2012</i>	<i>YTD 2011</i>	<i>YTD 2012</i>
Admissions	118	77	88	78	604	463
Average Daily Population	91	63	80	79	87	72
Average Length of Stay (Releases)	25.85	24.04	29.92	23.93	26.68	26.95
Average Length of Stay (In Custody)	55.68	68.23	58.87	69.17	54.69	70.01
Releases	109	78	104	69	612	462
Log Cabin Ranch						
Admissions:						
First Time Commitments	4	0	0	3	8	14
Recommitments	0	0	0	0	0	0
<i>Total</i>	4	0	0	3	8	14
Releases:						
Graduated	0	0	0	0	7	1
Escape	0	0	0	0	0	1
Other releases*	3	3	3	4	6	16
<i>Total</i>	3	3	3	4	13	18
Average Daily Population	21	16	20	12	22	18

*LCR Furlough in 2012

Summary Report for the Month of June 2012

Probation Services	<i>May 2012</i>	<i>June 2012</i>	<i>Year To Date 2012</i>
Probation Referrals	158	143	906
Total Petitions including violation of probation	78	61	402
Selected Court Dispositions:			
California Youth Authority	1	2	3
Log Cabin Ranch	0	3	15
Out of Home Placement	4	8	46
Ward Probation	16	18	94
Non-Ward Probation (725a WI)	1	2	17
Informal Probation (654 WI)	8	6	59
Violation of Probation Petitions Filed	15	11	62
California Youth Authority Monthly Count San Francisco County Juvenile Court Cases June 30th, 2012			
Category	Institutions	Parole	
Males			
White	0	1	
Hispanic	0	0	
African American	6	1	
Asian	0	0	
Native American	0	0	
Filipino	0	0	
Pacific Islander	0	0	
Other	0	0	
Total	6	2	
Females			
White	0	0	
Hispanic	0	0	
African American	0	0	
Asian	0	0	
Native American	0	0	
Filipino	0	0	
Pacific Islander	0	0	
Other	0	0	
Total	0	0	
Grand Total	6	2	

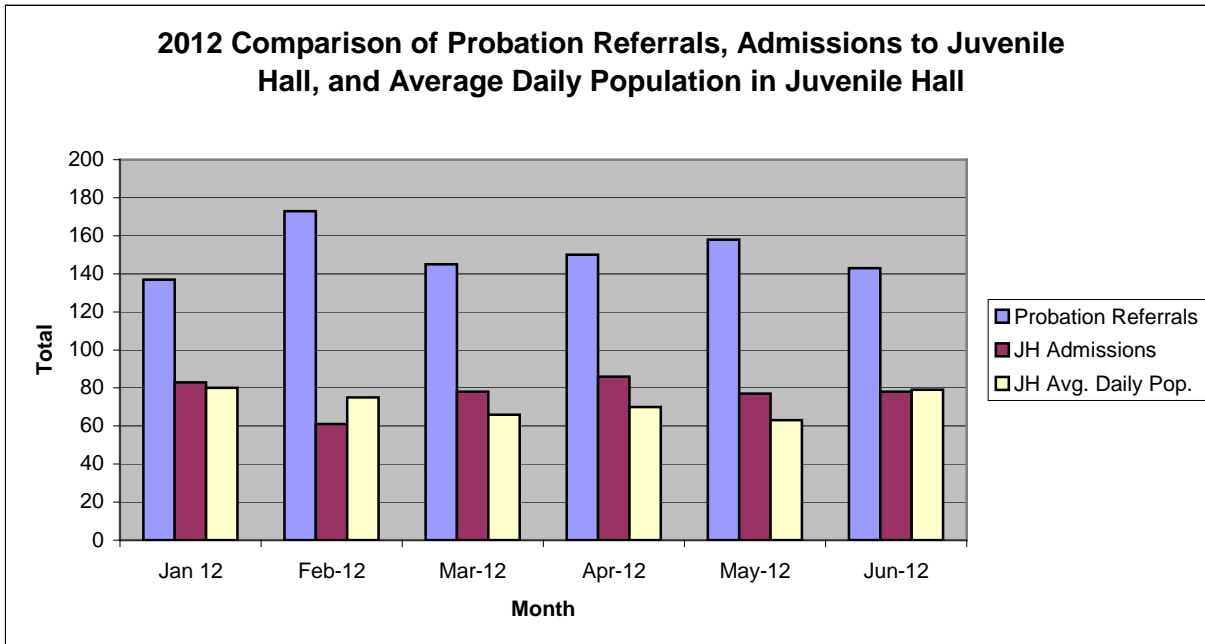
Summary Report for the Month of June 2012

Probation Services			
Active Cases by Units	May 2012	June 2012	June Average # Youth by PO
CARC	231	233	233
Intake Green (Custody Screening Investigation)	107	114	14
Intake Gold (Probation Services 1)	154	137	19
Family Integrated Treatment Services (FITS) PS2	174	159	15
Serious Offenders Program (Probation Services 3)	183	181	18
Out-of-home Placement (Probation Services 4)	182	180	22
Special Services	3	2	2
<i>Total</i>	1,034	1,006	46
Total Active Intake Cases	511	497	
Total Probation/Supervision Cases	523	509	

Section II
Current Month
General Detail

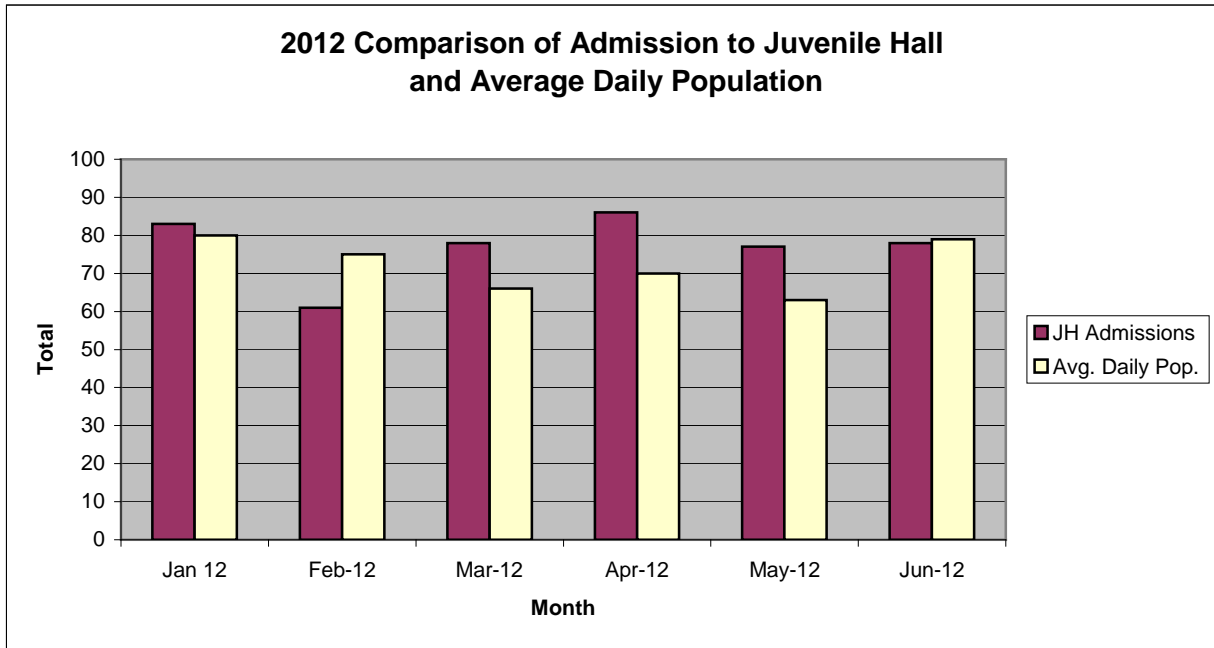
San Francisco Juvenile Probation Department

	Jan 12	Feb-12	Mar-12	Apr-12	May-12	Jun-12	Jul-12	Aug-12	Sep-12	Oct-12	Nov-12	Dec-12
Probation Referrals	137	173	145	150	158	143						
JH Admissions	83	61	78	86	77	78						
JH Avg. Daily Pop.	80	75	66	70	63	79						



San Francisco Juvenile Probation Department

	Jan 12	Feb-12	Mar-12	Apr-12	May-12	Jun-12	Jul-12	Aug-12	Sep-12	Oct-12	Nov-12	Dec-12
JH Admissions	83	61	78	86	77	78						
Avg. Daily Pop.	80	75	66	70	63	79						

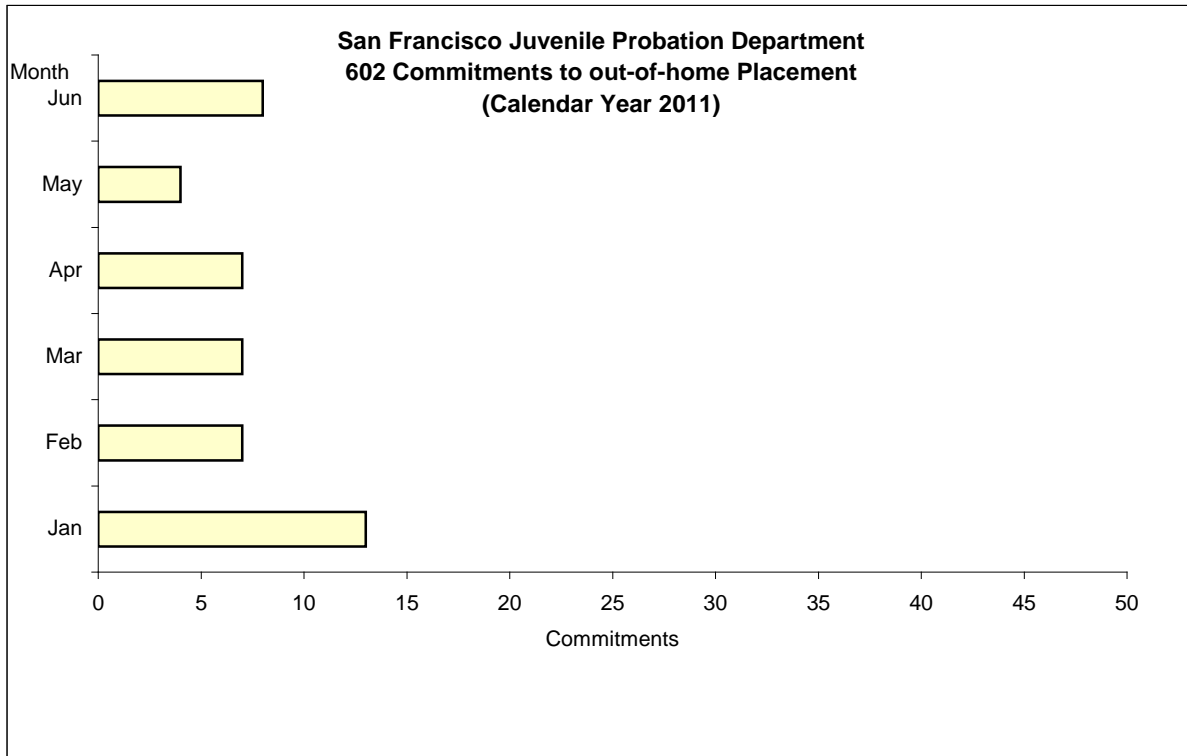


Out-of-Home Placement¹

Commitments of 602's

Calendar Year 2012

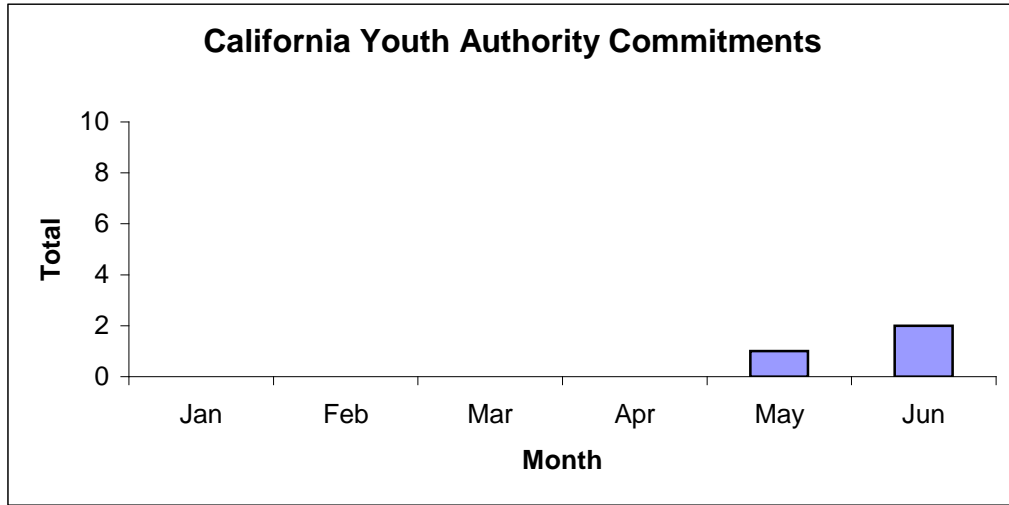
Commitments	Jan	Feb	Mar	Apr	May	Jun	Jul	Aug	Sep	Oct	Nov	Dec	Total
2012	13	7	7	7	4	8							46



¹ This report is based on 602 Commitments to out-of-home placements. If there is a 601 commitment, it will show as a footnote here. Figures are regularly updated to include reports from previous reporting periods.

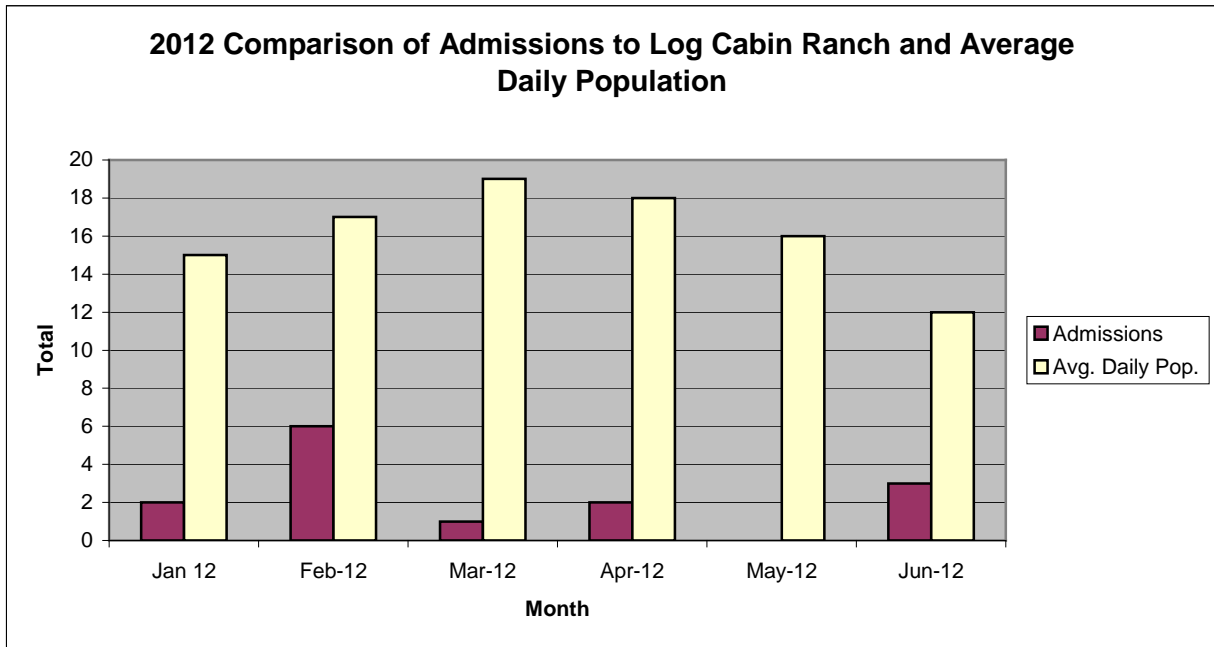
California Youth Authority
Commitments
(Calendar Year 2012)

Commitments	Jan	Feb	Mar	Apr	May	Jun	Jul	Aug	Sep	Oct	Nov	Dec	Total
2012	0	0	0	0	1	2							3



San Francisco Juvenile Probation Department

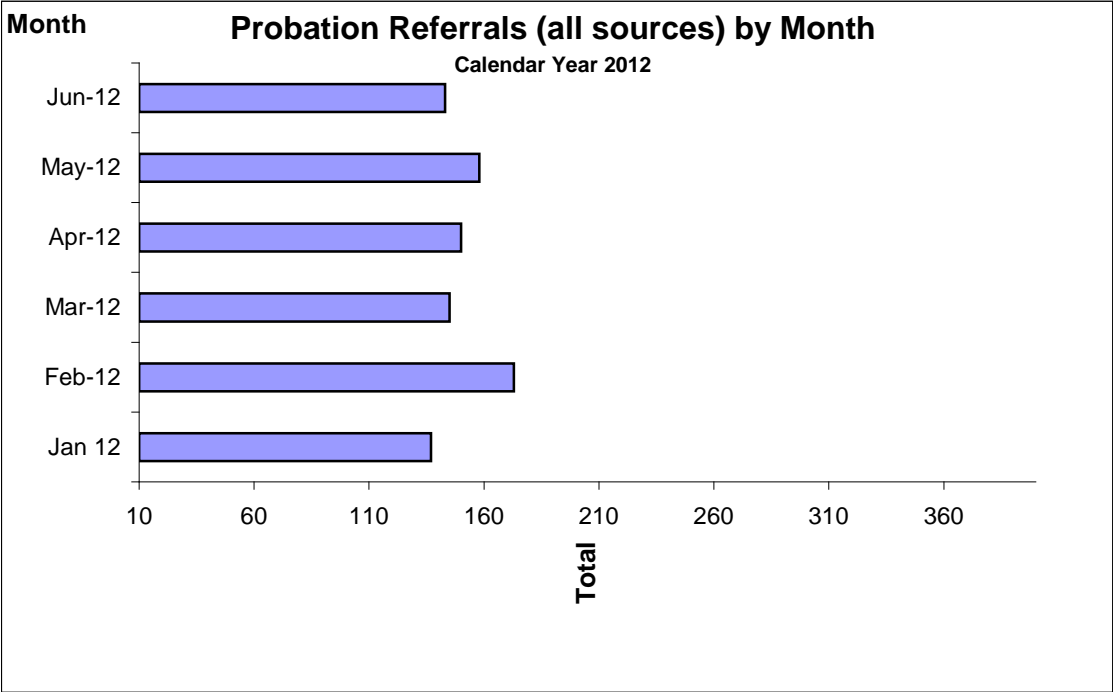
	Jan 12	Feb-12	Mar-12	Apr-12	May-12	Jun-12	Jul-12	Aug-12	Sep-12	Oct-12	Nov-12	Dec-12
Admissions	2	6	1	2	0	3						
Avg. Daily Pop.	15	17	19	18	16	12						



Probation Referrals by Month Calendar Year 2012

Probation Referrals (all sources) by Month (602 W&I)

Jan 12	137
Feb-12	173
Mar-12	145
Apr-12	150
May-12	158
Jun-12	143
Jul-12	
Aug-12	
Sep-12	
Oct-12	
Nov-12	
Dec-12	

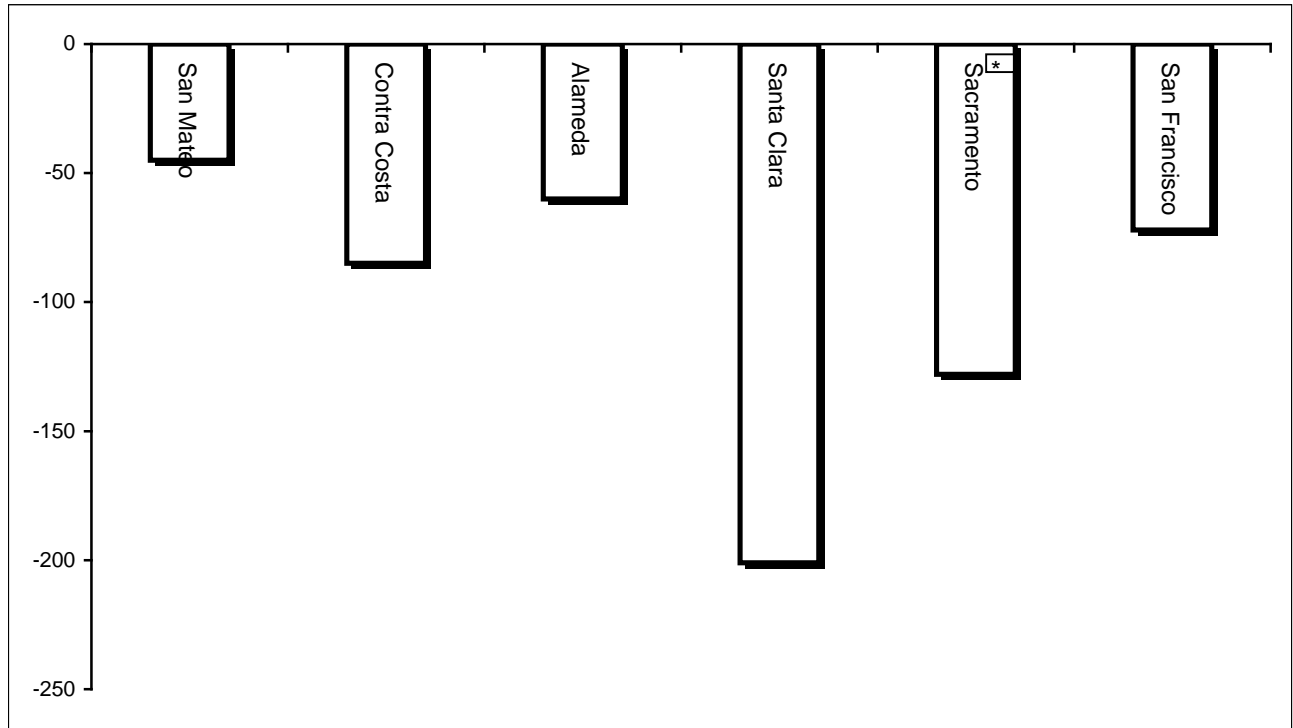


San Francisco Juvenile Probation Department
 Monthly Incident Report Form
 June 2012

Juvenile Hall	Assault on Staff	Fight	Attempted Escape	Fire	Attempted Suicide	Serious Contraband (Weapon illegal drug)	Use of Restraints	Self-Inflicted Injury	Assault on Staff with Injury	Fight with Injury
	0	4	0	0	2	7	0	0	1	0
	Escape	Death	Suicide	Property Damage	Use of Force					
	0	0	0	0	0					
Log Cabin Ranch	Battery on Staff	Injury to Staff due to Restraint of Minor	Fight	Battery Youth on Youth	Attempted Escape	AWOL	Attempted Suicide	Serious Contraband	Battery on Staff with Injury	Fire
	0	0	0	0	0	0	0	0	0	0
	Fight With Injury	Battery Youth on Youth with Injury	Escape	Death	Suicide	Major Property Destruction				
	0	0	0	0	0	0				

Bay Area Resident Juvenile Hall Comparison Over/Under Capacity

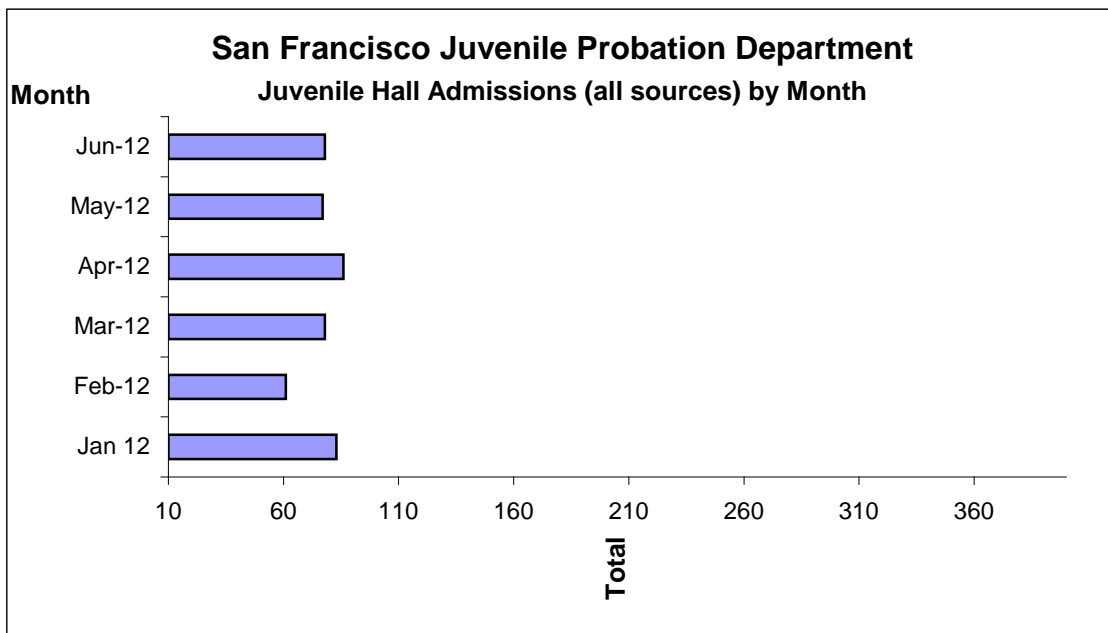
July 2nd, 2012



	Rated Capacity	Actual	Over/Under Capacity
San Mateo	180	135	-45
Contra Costa	240	155	-85
Alameda	280	220	-60
Santa Clara	360	159	-201
Sacramento	308	180	-128
San Francisco	150	78	-72

Juvenile Hall Admissions by Month Calendar Year 2012

Jan 12	83
Feb-12	61
Mar-12	78
Apr-12	86
May-12	77
Jun-12	78
Jul-12	
Aug-12	
Sep-12	
Oct-12	
Nov-12	
Dec-12	



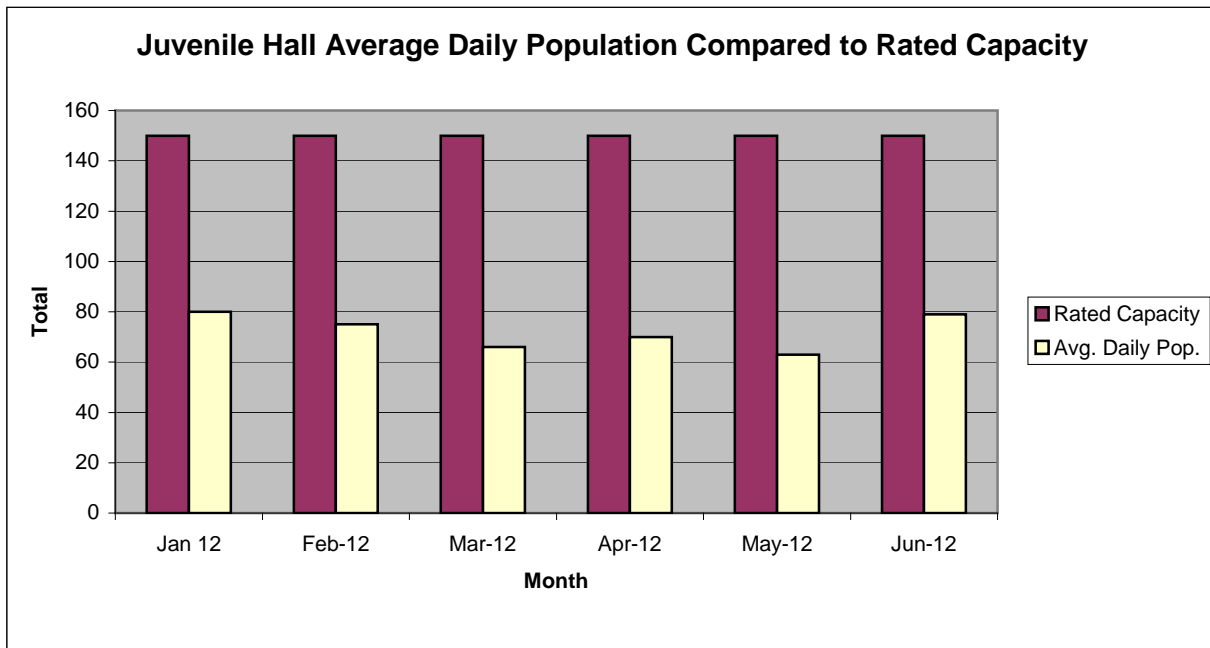
Characteristics of Juvenile Hall Detainees on June 30th, 2012

ReferralReason	MF*	Literal	Count	%
187 (A) PC	F	MURDER	2	2.56%
664 /187 (A) PC	F	ATTEMPTED MURDER	6	7.69%
288 (A) PC	F	LEWD OR LASCIVIOUS ACTS W/CHILD UNDER 14 YEARS	1	1.28%
246 PC	F	SHOOT AT INHABITED DWELLING/VEHICLE/ETC	1	1.28%
211 PC	F	ROBBERY	22	28.21%
11352 (A) HS	F	TRANSPORT/SELL NARCOTIC/CONTROLLED SUBSTANCE	1	1.28%
459 PC	F	BURGLARY	3	3.85%
245 (A)(2) PC	F	ASSAULT WITH FIREARM ON PERSON	1	1.28%
245 (A)(1) PC	F	FORCE OR ADW NOT FIREARM:GBI LIKELY	3	3.85%
12025 (A)(1) PC	F	CARRY CONCEALED WEAPON IN VEHICLE W/PRIOR FELONY CONVICTION	2	2.56%
25400 (C)(2) PC	F	CARRY CONCEALED STOLEN WEAPON	1	1.28%
25400 (C)(4) PC	F	CARRY CONCEALED WEAPON PROHIBITED CLASS/UNLAWFUL POSSESSION	1	1.28%
246.3(A) PC	F	WILLFUL DISCHARGE OF FIREARM IN A GROSSLY NEGLIGENT MANNER	1	1.28%
487 (A) PC	F	GRAND THEFT:MONEY/LABOR/PROPERTY	1	1.28%
496 (A) PC	F	RECEIVE/ETC KNOWN STOLEN PROPERTY	1	1.28%
25400 (A)(3) PC	F	CARRY CONCEALED WEAPON IN VEHICLE:OCCUPANT	1	1.28%
2800.2(A) VC	F	EVADE PEACE OFFICER WITH WANTON DISREGARD FOR SAFETY	1	1.28%
29610 PC	F	MINOR ILLEGALLY POSSESS CONCEALED WEAPON WITH PRIOR	2	2.56%
148 (A)(1) PC	M	OBSTRUCT/RESIST/ETC PUBLIC/PEACE OFFICER/EMERGENCY MED TECH	1	1.28%
243 (D) PC	M	BATTERY WITH SERIOUS BODILY INJURY (PUNISHMENT)	1	1.28%
594 (B)(1) PC	M	VANDALISM (\$10000 OR MORE)	1	1.28%
242 PC	M	BATTERY	1	1.28%
777 (A)(2) WI	M	FAIL TO OBEY ORDER OF JUVENILE COURT:602 WI	5	6.41%
628.1 WI	M	VIOLATION(S) OF HOME SUPERVISION CONDITION	4	5.13%
737 WI	M	CHANGE OF PLACEMENT/PLACEMENT FAILURE	3	3.85%
BENCH WARRANT XX		BENCH WARRANT	1	1.28%
WRNT602 XX		ARREST WARRANT	7	8.97%
CTORD 602 XX		COURT ORDER	3	3.85%
		Total	78	100.00%

*F=Felony; M=Misdemeanor

San Francisco Juvenile Probation Department

	Jan 12	Feb-12	Mar-12	Apr-12	May-12	Jun-12	Jul-12	Aug-12	Sep-12	Oct-12	Nov-12	Dec-12
Rated Capacity	150	150	150	150	150	150						
Avg. Daily Pop.	80	75	66	70	63	79						



Juvenile Hall Average Length of Stay

For the Month of June 2012

¹Released

Range of Days	<i>1-10 days</i>	<i>11-20 days</i>	<i>21-30 days</i>	<i>30 or more days</i>	Total
# of Youth Released	36	14	6	13	69
% of Population	52.17%	20.29%	8.70%	18.84%	100%
# of Days	130	222	137	1,162	1,651
% of Total Days	7.87%	13.45%	8.30%	70.38%	100%
Average Length of Stay	3.61	15.86	22.83	89.38	23.93

²In Custody

Range of Days	<i>1-10 days</i>	<i>11-20 days</i>	<i>21-30 days</i>	<i>30 or more days</i>	Total
# of Youth Detained	17	8	14	39	78
% of Population	21.79%	10.26%	17.95%	50.00%	100%
# of Days	86	112	368	4,829	5,395
% of Total Days	1.59%	2.08%	6.82%	89.51%	100%
Average Length of Stay	5.06	14.00	26.29	123.82	69.17

Notes: Less than one day of stay is calculated as one day.

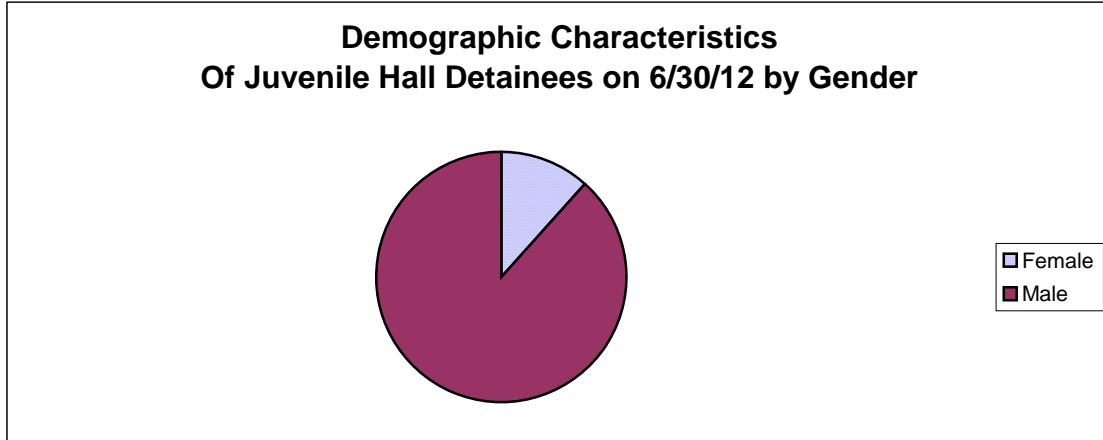
¹Length of stay is calculated according to release date for those who are released.

²For those still in custody, length of stay is calculated at the last day of the month.

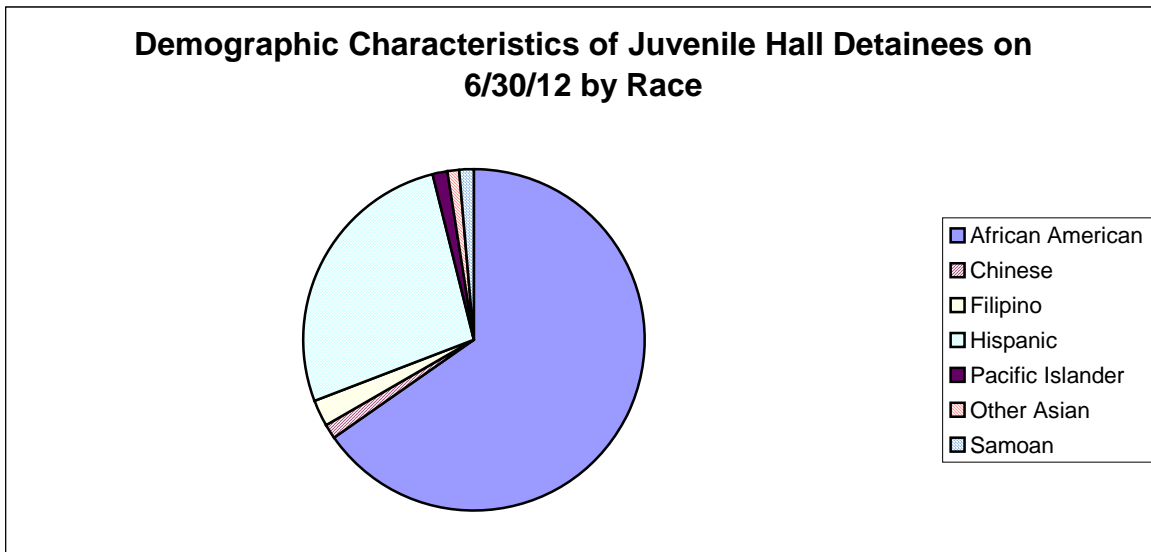
Section III

Demographics

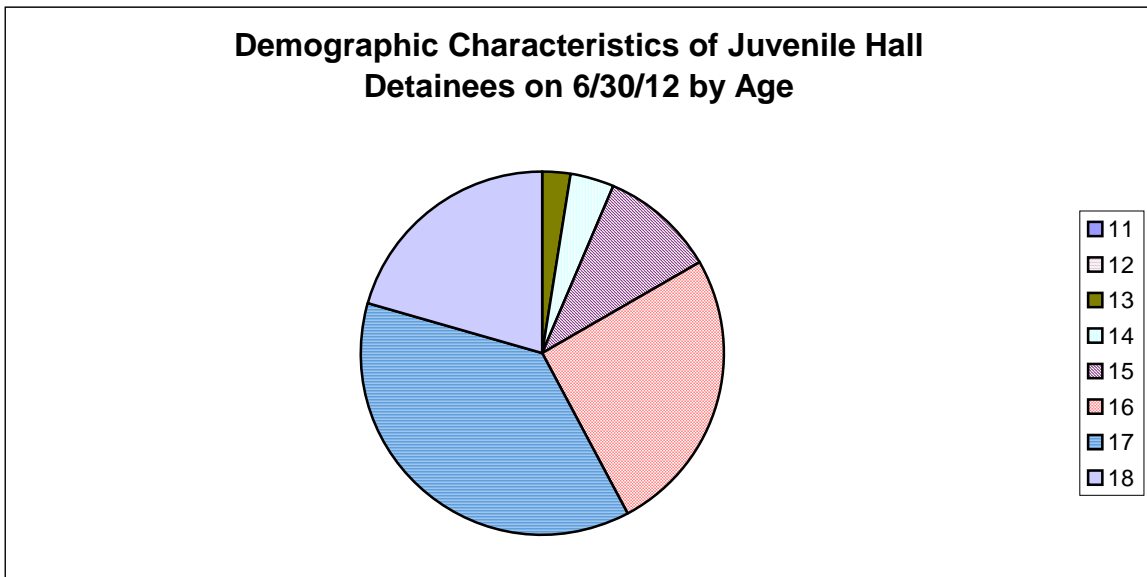
Gender	Frequency	Percent
Female	9	11.54%
Male	69	88.46%
Total	78	100.00%



Race/Ethnic Origin	Frequency	Percent
African American	51	65.38%
Chinese	1	1.28%
Filipino	2	2.56%
Hispanic	21	26.92%
Pacific Islander	1	1.28%
Other Asian	1	1.28%
Samoan	1	1.28%
Total	78	100.00%

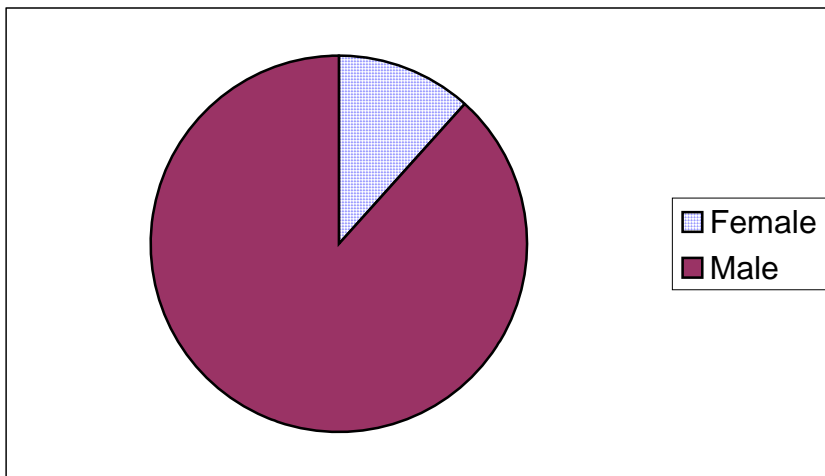


Age	Frequency	Percent
11	0	0.00%
12	0	0.00%
13	2	2.56%
14	3	3.85%
15	8	10.26%
16	20	25.64%
17	29	37.18%
18	16	20.51%
Total	78	100.00%



Demographic Characteristics of Juvenile Hall Detainees
on 6/30/2012
Age by Gender

Age	Female	Male	Total	
11	0	0	0	0.00%
12	0	0	0	0.00%
13	1	1	2	2.56%
14	0	3	3	3.85%
15	2	6	8	10.26%
16	3	17	20	25.64%
17	3	26	29	37.18%
18 and over	0	16	16	20.51%
Total	9	69	78	100.00%
	11.54%	88.46%	100.00%	



Demographic Characteristics
Of Juvenile Hall Detainees on June 30th, 2012

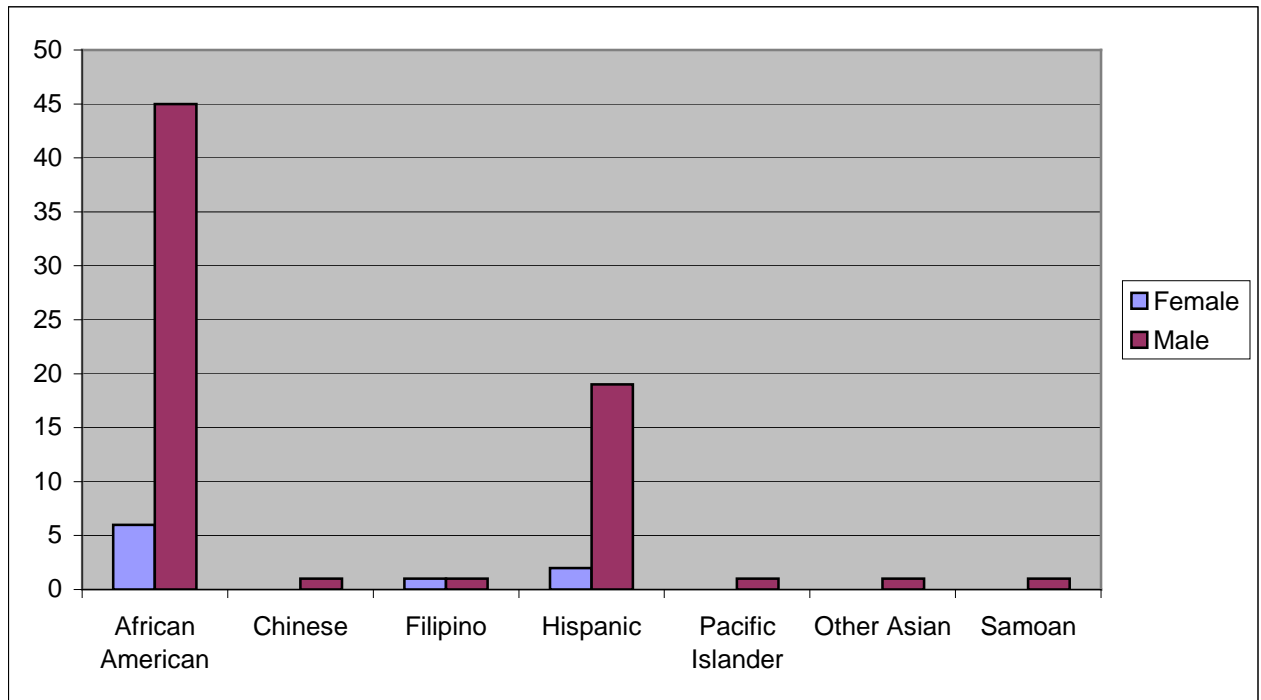
Geographic Residence of Youth	Count	%
Richmond	4	5.1%
Marina	0	0.0%
North of Market/Downtown	1	1.3%
Treasure Island/Yerba Buena Island	3	3.8%
Western Addition	2	2.6%
South of Market/Tenderloin	2	2.6%
Sunset	3	3.8%
Haight Ashbury/Castro/Upper Market	1	1.3%
Inner Mission	1	1.3%
Potrero	2	2.6%
Parkside	1	1.3%
Ingleside (West of Twin Peaks)	8	10.3%
Outer Mission	25	32.1%
Bayview	17	21.8%
Non-San Francisco and Unavailable	8	10.3%
Total	78	100.0%

Non-San Francisco and Unavailable	Count	%
Hayward	1	12.5%
Oakland	4	50.0%
Vallejo	1	12.5%
Unavailable	2	25.0%
Total	8	100.0%

Demographic Characteristics
Of Juvenile Hall Detainees on June 30th, 2012

Race/Ethnic Origin by Gender

Race/Ethnicity	Female	Male	Total	%
African American	6	45	51	65.4%
Chinese	0	1	1	1.3%
Filipino	1	1	2	2.6%
Hispanic	2	19	21	26.9%
Pacific Islander	0	1	1	1.3%
Other Asian	0	1	1	1.3%
Samoan	0	1	1	1.3%
Total	9	69	78	100.0%

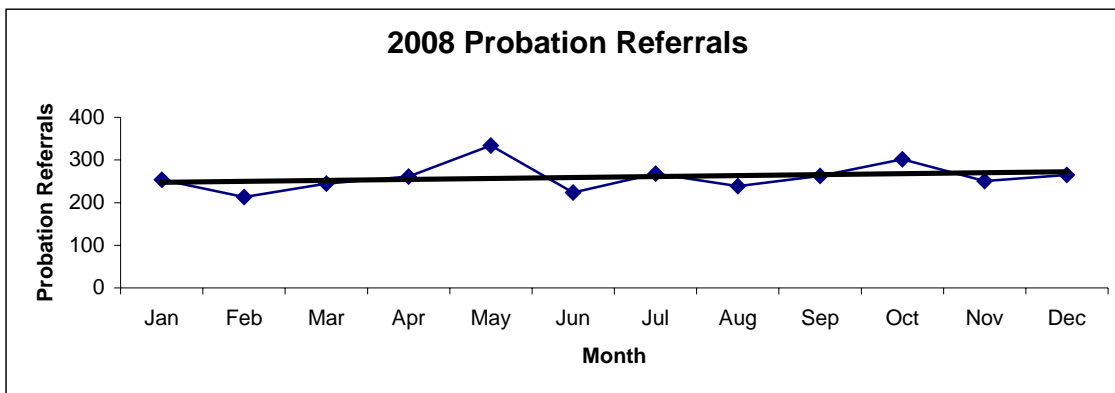


Section IV

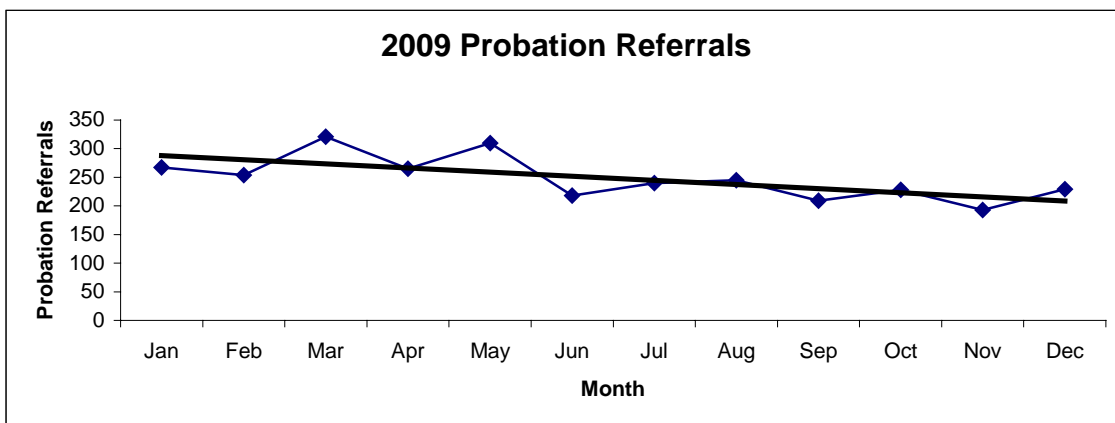
Historical Information

San Francisco Juvenile Probation Department
Probation Referrals (all sources) By Month
(2008-2010)

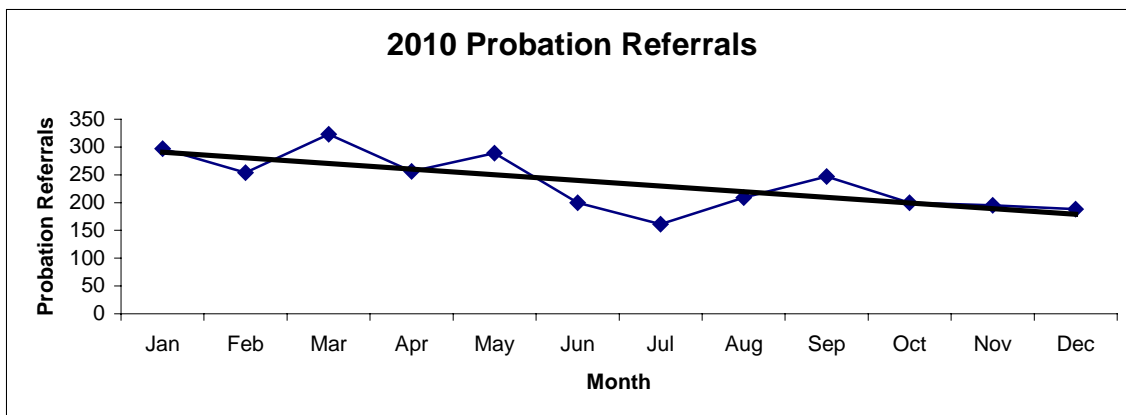
2008 Probation Referrals	Jan	Feb	Mar	Apr	May	Jun	Jul	Aug	Sep	Oct	Nov	Dec	Total
	254	213	245	261	334	224	268	239	263	302	251	265	3119



2009 Probation Referrals	Jan	Feb	Mar	Apr	May	Jun	Jul	Aug	Sep	Oct	Nov	Dec	Total
	267	254	321	265	310	218	240	245	209	228	193	229	2979

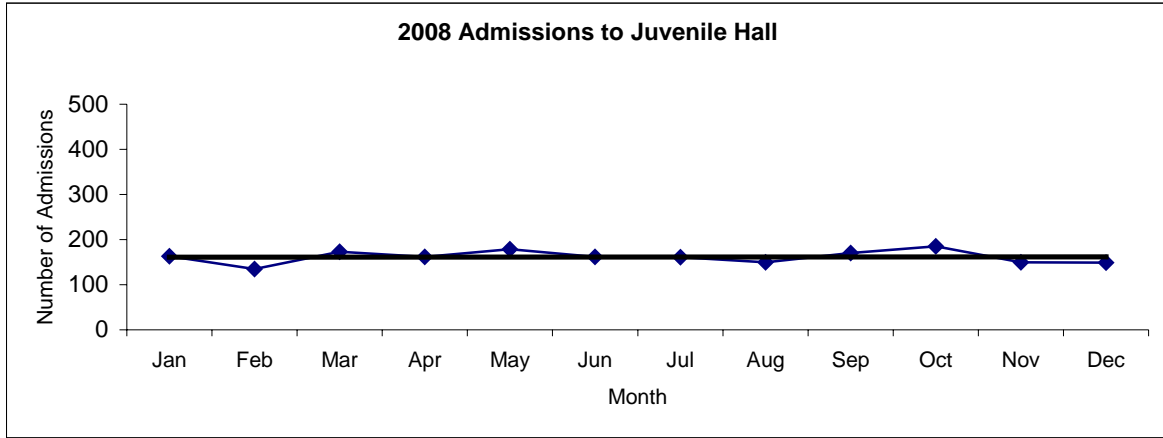


2010 Probation Referrals	Jan	Feb	Mar	Apr	May	Jun	Jul	Aug	Sep	Oct	Nov	Dec	Total
	297	254	323	256	289	200	161	209	247	200	195	188	2819

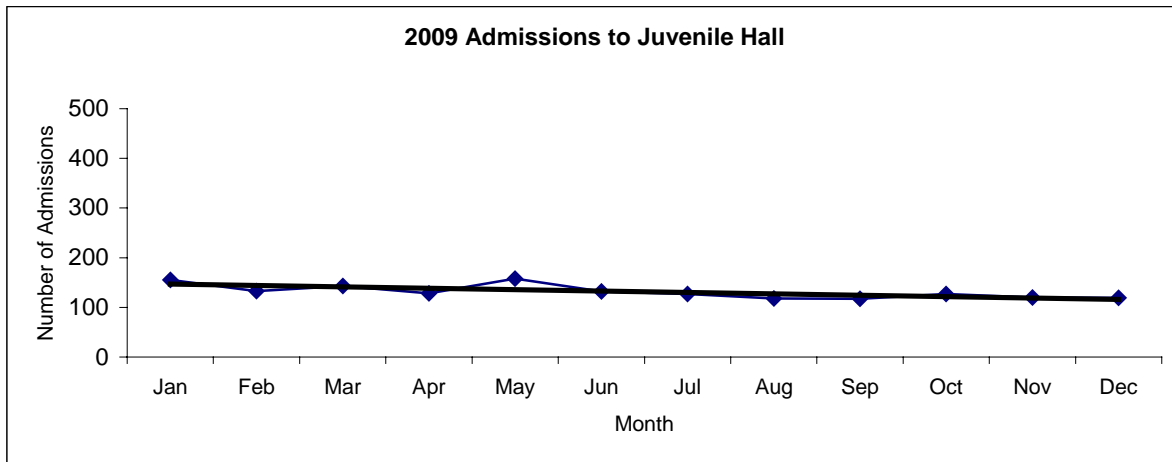


**San Francisco Juvenile Probation
Juvenile Hall Admissions By Month
(2008-2010)**

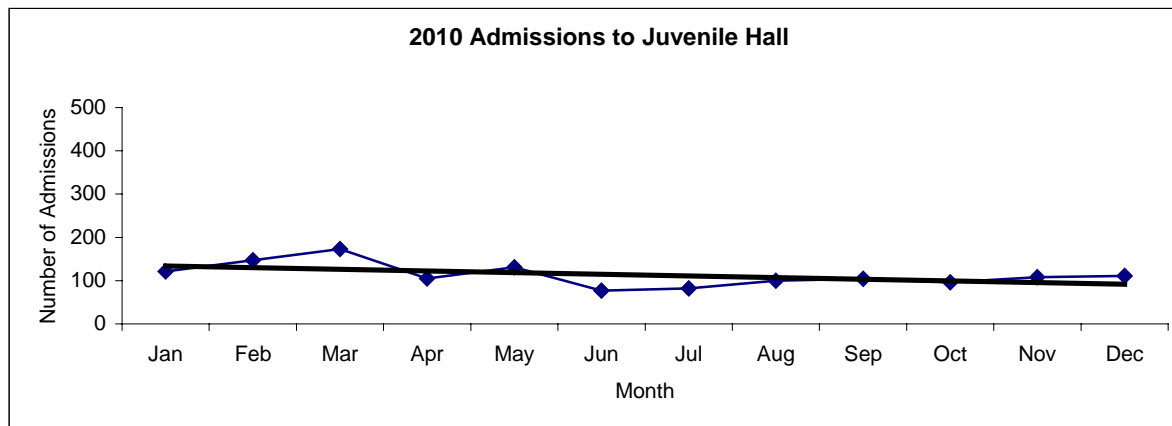
2008 Admissions	Jan	Feb	Mar	Apr	May	Jun	Jul	Aug	Sep	Oct	Nov	Dec	Total
	163	135	173	162	179	162	161	150	170	185	150	149	1939



2009 Admissions	Jan	Feb	Mar	Apr	May	Jun	Jul	Aug	Sep	Oct	Nov	Dec	Total
	155	133	143	128	158	132	127	118	117	127	120	119	1577

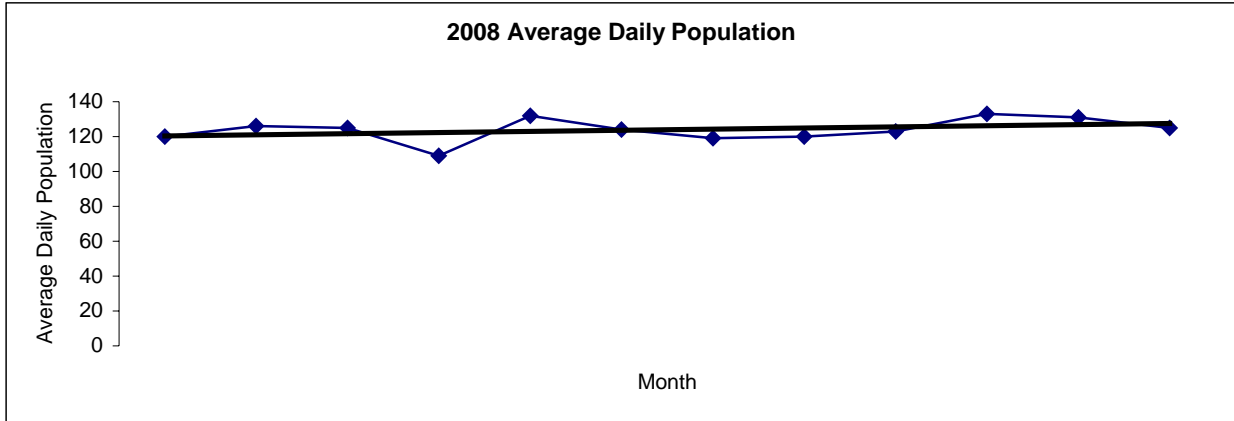


2010 Admissions	Jan	Feb	Mar	Apr	May	Jun	Jul	Aug	Sep	Oct	Nov	Dec	Total
	121	147	173	105	131	77	82	100	104	96	108	111	1355

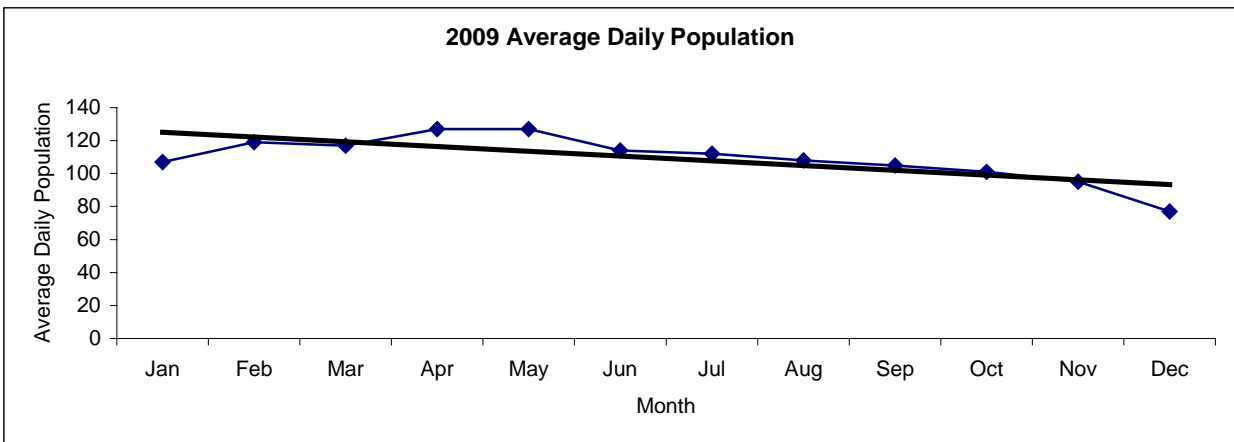


San Francisco Juvenile Probation
Juvenile Hall Average Daily Population By Month
 (2008-2010)

2008 Avg. Daily Pop.	Jan	Feb	Mar	Apr	May	Jun	Jul	Aug	Sep	Oct	Nov	Dec	Total
	120	126	125	109	132	124	119	120	123	133	131	125	124



2009 Avg. Daily Pop.	Jan	Feb	Mar	Apr	May	Jun	Jul	Aug	Sep	Oct	Nov	Dec	Total
	107	119	117	127	127	114	112	108	105	101	95	77	109



2010 Avg. Daily Pop.	Jan	Feb	Mar	Apr	May	Jun	Jul	Aug	Sep	Oct	Nov	Dec	Total
	85	104	110	107	99	97	90	88	90	84	79	92	94

