

# City and County of San Francisco



Juvenile Probation Department

---

## **Monthly Report for July 2012**

Presented to the Juvenile Probation Commission

August 14<sup>th</sup>, 2012

William P. Siffermann  
Chief Probation Officer

Prepared by Jose Luis Perla  
Information Technology Director  
(415) 753-7686  
[jose.perla@sfgov.org](mailto:jose.perla@sfgov.org)

# Table of Contents

---

## **Section I Summary Reports**

Juvenile Hall, Log Cabin Ranch Summary Statistics .....	1
Probation Services Summary and California Youth Authority Statistics .....	2
Active Cases by Units .....	3

## **Section II Current Month General Detail**

Probation Referrals, Juvenile Admissions And Average Daily Population .....	4
Juvenile Hall Admissions and Average Daily Population .....	5
Commitments to out-of-home placement .....	6
Commitments to California Youth Authority .....	7
Log Cabin Ranch Admissions and Average Daily Population .....	8
Probation Referrals .....	9
Juvenile Hall And Log Cabin Ranch Incident Report .....	10
Bay Area Resident Juvenile Hall Comparison .....	11
Juvenile Hall Admissions .....	12
Juvenile Hall Detainees by Detention Reason .....	13
Juvenile Hall Average Daily Population by Rated Capacity .....	14
Juvenile Hall Average Length of Stay .....	15

## **Section III Demographics**

Juvenile Hall Detainees by Sex and Race/Ethnic Origin .....	16
Juvenile Hall Detainees by Age .....	17
Juvenile Hall Detainees by Age and Sex .....	18
Juvenile Hall Detainees by Geographic Residence of Youth .....	19
Juvenile Hall Detainees by Race/Ethnic Origin and Sex .....	20

## **Section IV**

### **Historical Information**

2004-2006 Probation Referrals .....	21
2004-2006 Juvenile Hall Admissions .....	22
2004-2006 Juvenile Hall Average Daily Population .....	23

---

# **Section I**

## **Summary Reports**

## Summary Report for the Month of July 2012

<b>Juvenile Hall</b>	<i>June 2011</i>	<i>June 2012</i>	<i>July 2011</i>	<i>July 2012</i>	<i>YTD 2011</i>	<i>YTD 2012</i>
Admissions	88	78	100	85	704	548
Average Daily Population	80	79	87	83	87	74
Average Length of Stay (Releases)	29.92	23.93	35.56	38.0	27.95	27.92
Average Length of Stay (In Custody)	58.87	69.17	45.11	69.38	53.32	69.92
Releases	104	69	85	92	697	554
<b>Log Cabin Ranch</b>						
Admissions:						
First Time Commitments	0	3	5	8	13	22
Recommitments	0	0	0	0	0	0
<i>Total</i>	<b>0</b>	<b>3</b>	<b>5</b>	<b>8</b>	<b>13</b>	<b>22</b>
Releases:						
Graduated	0	0	0	0	7	1
Escape	0	0	0	0	0	1
Other releases*	3	4	2	0	8	16
<i>Total</i>	<b>3</b>	<b>4</b>	<b>2</b>	<b>0</b>	<b>15</b>	<b>18</b>
Average Daily Population	20	12	21	15	21	17

\*LCR Furlough in 2012

## Summary Report for the Month of July 2012

<b>Probation Services</b>	<i>June 2012</i>	<i>July 2012</i>	<i>Year To Date 2012</i>
Probation Referrals	143	138	1044
Total Petitions including violation of probation	61	61	463
Selected Court Dispositions:			
California Youth Authority	2	0	3
Log Cabin Ranch	3	10	25
Out of Home Placement	8	9	55
Ward Probation	18	21	115
Non-Ward Probation (725a WI)	2	4	21
Informal Probation (654 WI)	6	11	70
Violation of Probation Petitions Filed	11	12	74
<b>California Youth Authority Monthly Count</b> <b>San Francisco County Juvenile Court Cases</b> July 31 <sup>st</sup> , 2012			
Category	Institutions	Parole	
<b>Males</b>			
White	0	1	
Hispanic	1	0	
African American	7	0	
Asian	0	0	
Native American	0	0	
Filipino	0	0	
Pacific Islander	0	0	
Other	0	0	
<b>Total</b>	<b>8</b>	<b>1</b>	
<b>Females</b>			
White	0	0	
Hispanic	0	0	
African American	0	0	
Asian	0	0	
Native American	0	0	
Filipino	0	0	
Pacific Islander	0	0	
Other	0	0	
<b>Total</b>	<b>0</b>	<b>0</b>	
<b>Grand Total</b>	<b>8</b>	<b>1</b>	

## Summary Report for the Month of July 2012

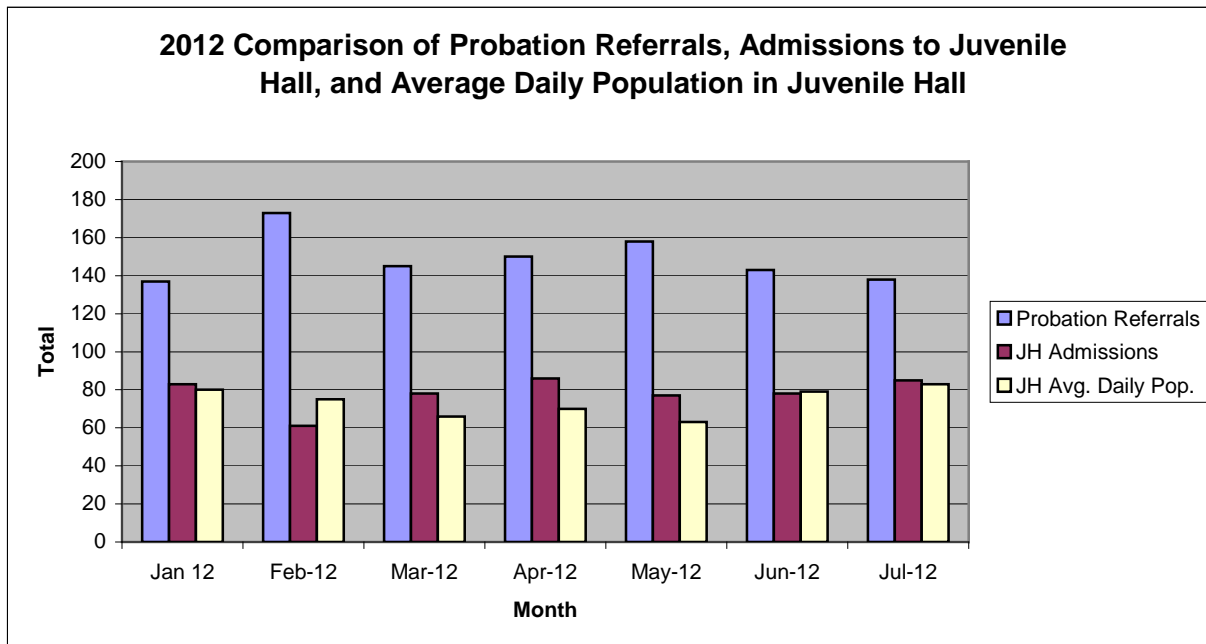
<b>Probation Services</b>			
<b>Active Cases by Units</b>	June 2012	July 2012	July Average # Youth by PO
CARC	233	172	172
Intake Green (Custody Screening Investigation)	114	100	12
Intake Gold (Probation Services 1)	137	116	16
Family Integrated Treatment Services (FITS) PS2	159	158	15
Serious Offenders Program (Probation Services 3)	181	197	19
Out-of-home Placement (Probation Services 4)	180	178	22
Special Services	2	0	0
<i>Total</i>	<b>1,006</b>	<b>921</b>	<b>36</b>
Total Active Intake Cases	497	406	
Total Probation/Supervision Cases	509	515	

**Section II**  
**Current Month**  
**General Detail**



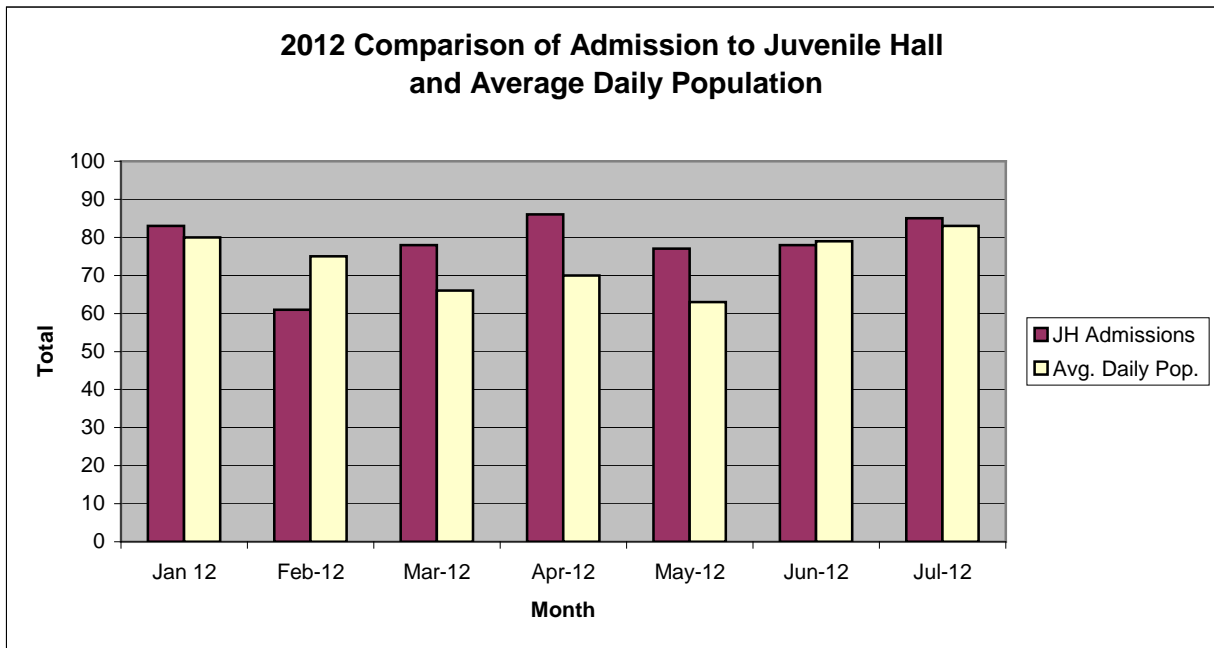
## San Francisco Juvenile Probation Department

	Jan 12	Feb-12	Mar-12	Apr-12	May-12	Jun-12	Jul-12	Aug-12	Sep-12	Oct-12	Nov-12	Dec-12
Probation Referrals	137	173	145	150	158	143	138					
JH Admissions	83	61	78	86	77	78	85					
JH Avg. Daily Pop.	80	75	66	70	63	79	83					



## San Francisco Juvenile Probation Department

	Jan 12	Feb-12	Mar-12	Apr-12	May-12	Jun-12	Jul-12	Aug-12	Sep-12	Oct-12	Nov-12	Dec-12
JH Admissions	83	61	78	86	77	78	85					
Avg. Daily Pop.	80	75	66	70	63	79	83					

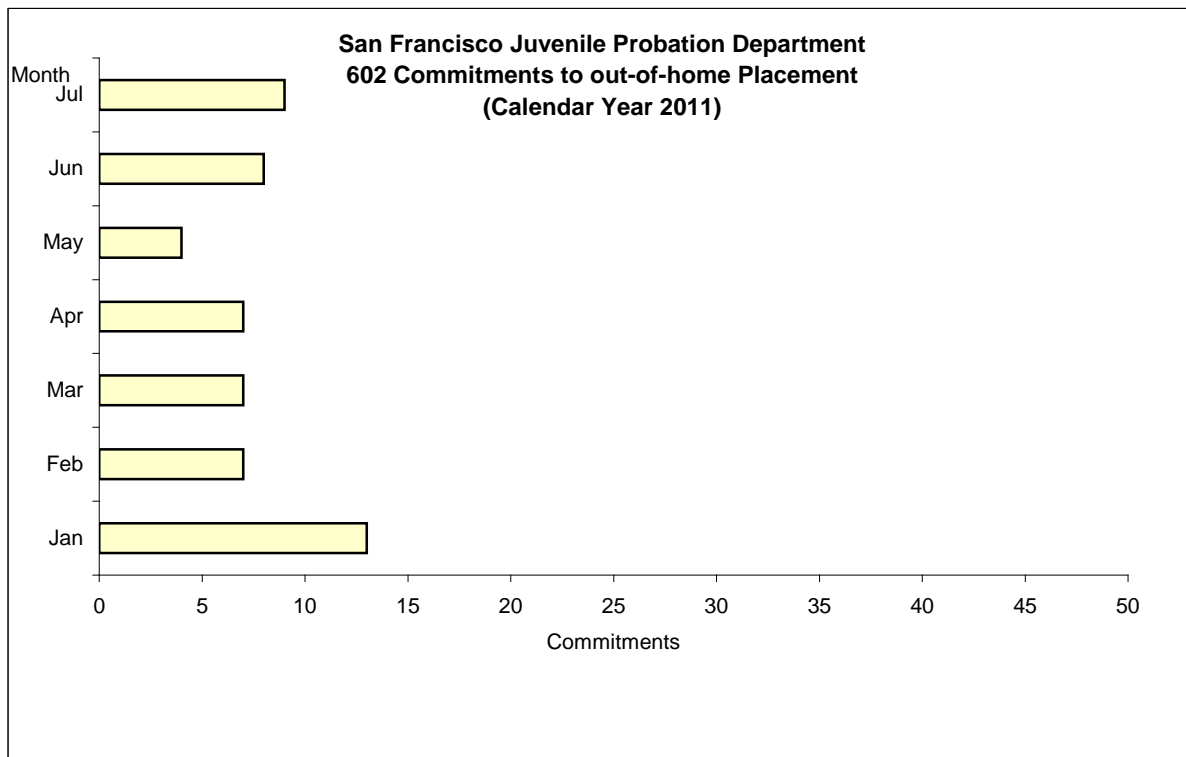


# Out-of-Home Placement<sup>1</sup>

## Commitments of 602's

### Calendar Year 2012

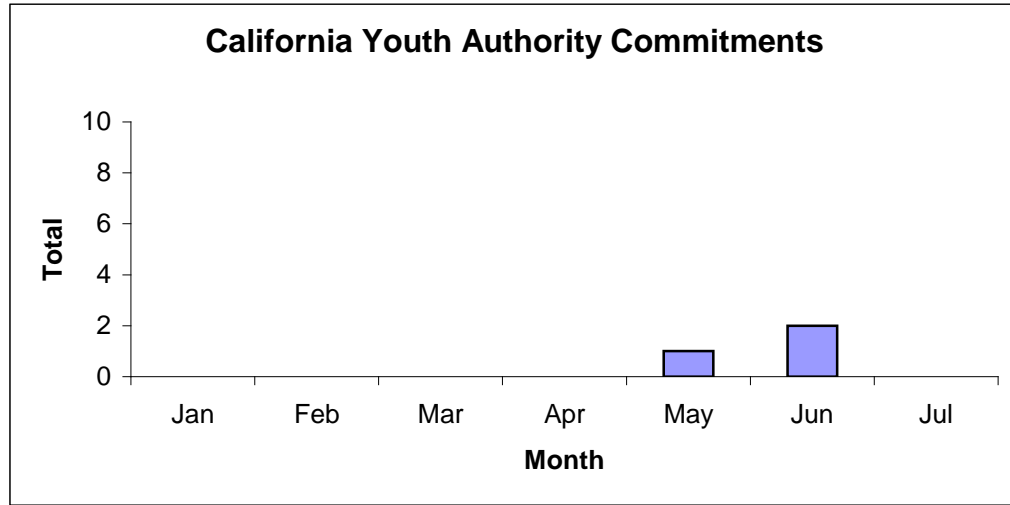
<b>Commitments</b>	<b>Jan</b>	<b>Feb</b>	<b>Mar</b>	<b>Apr</b>	<b>May</b>	<b>Jun</b>	<b>Jul</b>	<b>Aug</b>	<b>Sep</b>	<b>Oct</b>	<b>Nov</b>	<b>Dec</b>	<b>Total</b>
2012	13	7	7	7	4	8	9						55



<sup>1</sup> This report is based on 602 Commitments to out-of-home placements. If there is a 601 commitment, it will show as a footnote here. Figures are regularly updated to include reports from previous reporting periods.

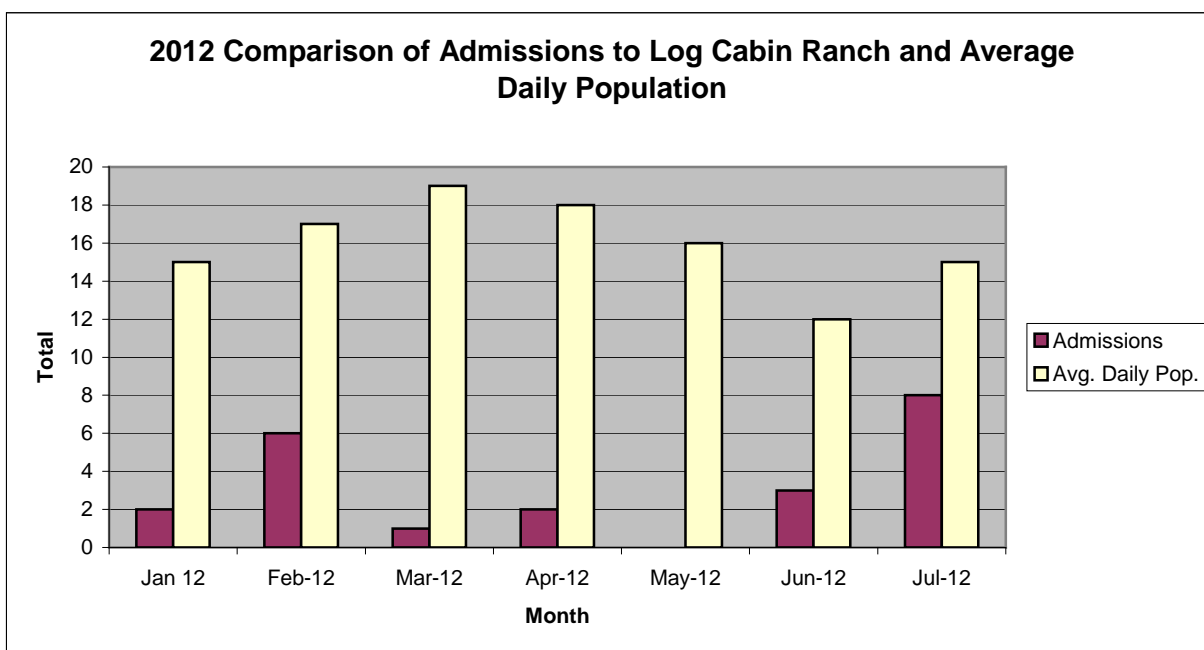
# California Youth Authority Commitments (Calendar Year 2012)

Commitments	Jan	Feb	Mar	Apr	May	Jun	Jul	Aug	Sep	Oct	Nov	Dec	Total
2012	0	0	0	0	1	2	0						3



## San Francisco Juvenile Probation Department

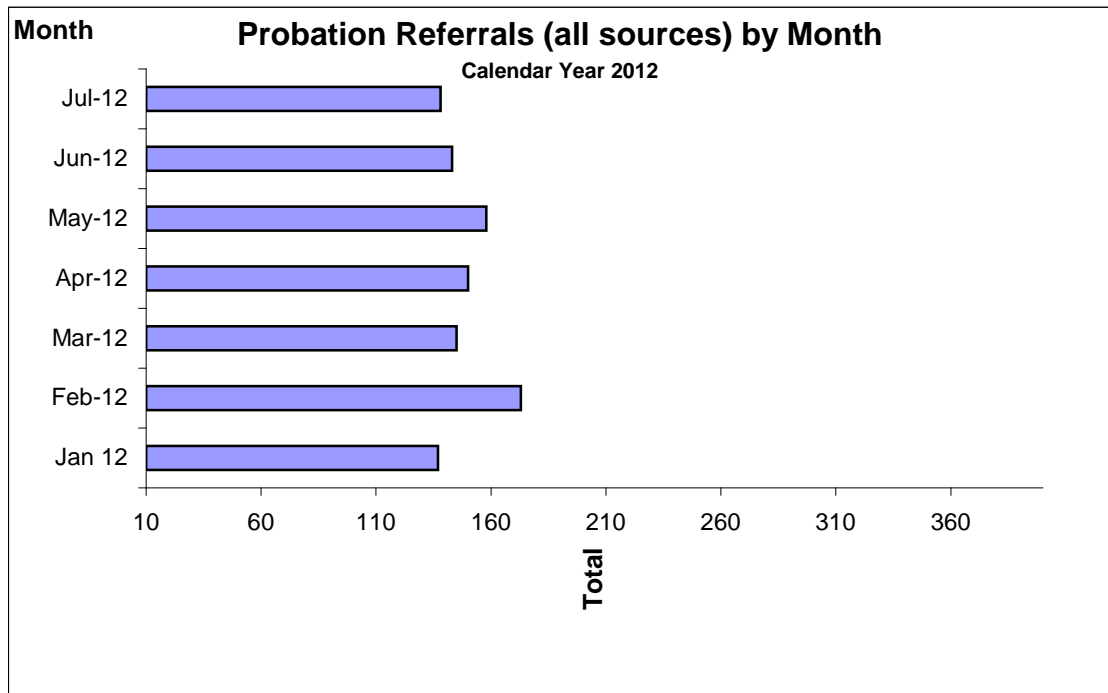
	Jan 12	Feb-12	Mar-12	Apr-12	May-12	Jun-12	Jul-12	Aug-12	Sep-12	Oct-12	Nov-12	Dec-12
Admissions	2	6	1	2	0	3	8					
Avg. Daily Pop.	15	17	19	18	16	12	15					



## Probation Referrals by Month Calendar Year 2012

### Probation Referrals (all sources) by Month (602 W&I)

Jan 12	137
Feb-12	173
Mar-12	145
Apr-12	150
May-12	158
Jun-12	143
Jul-12	138
Aug-12	
Sep-12	
Oct-12	
Nov-12	
Dec-12	

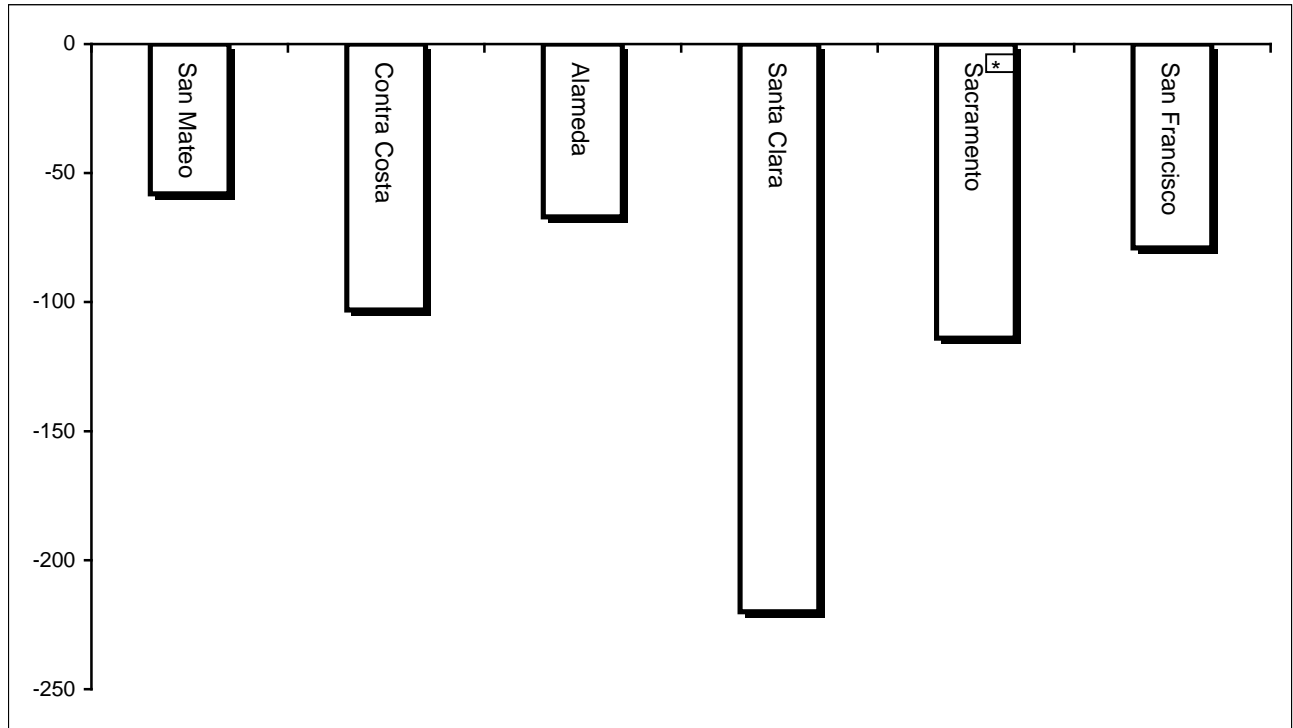


San Francisco Juvenile Probation Department  
Monthly Incident Report Form  
July 2012

<b>Juvenile Hall</b>	Battery on Staff	Injury to Staff Due to Restrain of Minor	Fights Minor on Minor	Battery Youth on Youth	Attempted Escape	AWOL	Attempted Suicide	Serious Contraband (Weapon illegal drug)	Use of Force	Self Inflicted Injuries
	<b>0</b>	<b>0</b>	<b>6</b>	<b>0</b>	<b>1</b>	<b>0</b>	<b>1</b>	<b>12</b>	<b>8</b>	<b>0</b>
	Assaults Minor on Minor	Battery on Staff with Injury	Fire	Fight with Injury	Battery Youth on Youth with Injury	Escape	Death	Suicide	Major Property Destruction	Use of Restraints (Handcuffs/Shackles)
	<b>2</b>	<b>0</b>	<b>0</b>	<b>0</b>	<b>0</b>	<b>0</b>	<b>0</b>	<b>0</b>	<b>0</b>	<b>0</b>
<b>Log Cabin Ranch</b>	Battery on Staff	Injury to Staff due to Restraint of Minor	Fight	Battery Youth on Youth	Attempted Escape	AWOL	Attempted Suicide	Serious Contraband	Battery on Staff with Injury	Fire
	<b>0</b>	<b>0</b>	<b>0</b>	<b>0</b>	<b>0</b>	<b>0</b>	<b>0</b>	<b>0</b>	<b>0</b>	<b>0</b>
	Fight With Injury	Battery Youth on Youth with Injury	Escape	Death	Suicide	Major Property Destruction				
	<b>0</b>	<b>0</b>	<b>0</b>	<b>0</b>	<b>0</b>	<b>0</b>				

# Bay Area Resident Juvenile Hall Comparison Over/Under Capacity

August 2<sup>nd</sup>, 2012

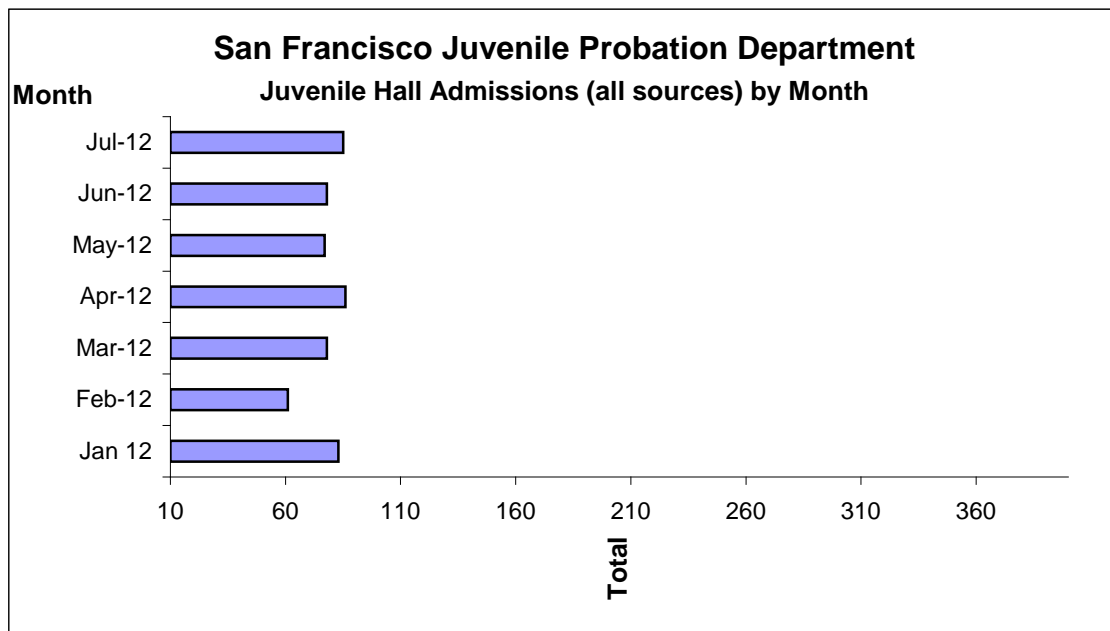


	Rated Capacity	Actual	Over/Under Capacity
San Mateo	180	122	-58
Contra Costa	240	137	-103
Alameda	280	213	-67
Santa Clara	360	140	-220
Sacramento	308	194	-114
San Francisco	150	71	-79



## Juvenile Hall Admissions by Month Calendar Year 2012

Jan 12	83
Feb-12	61
Mar-12	78
Apr-12	86
May-12	77
Jun-12	78
Jul-12	85
Aug-12	
Sep-12	
Oct-12	
Nov-12	
Dec-12	

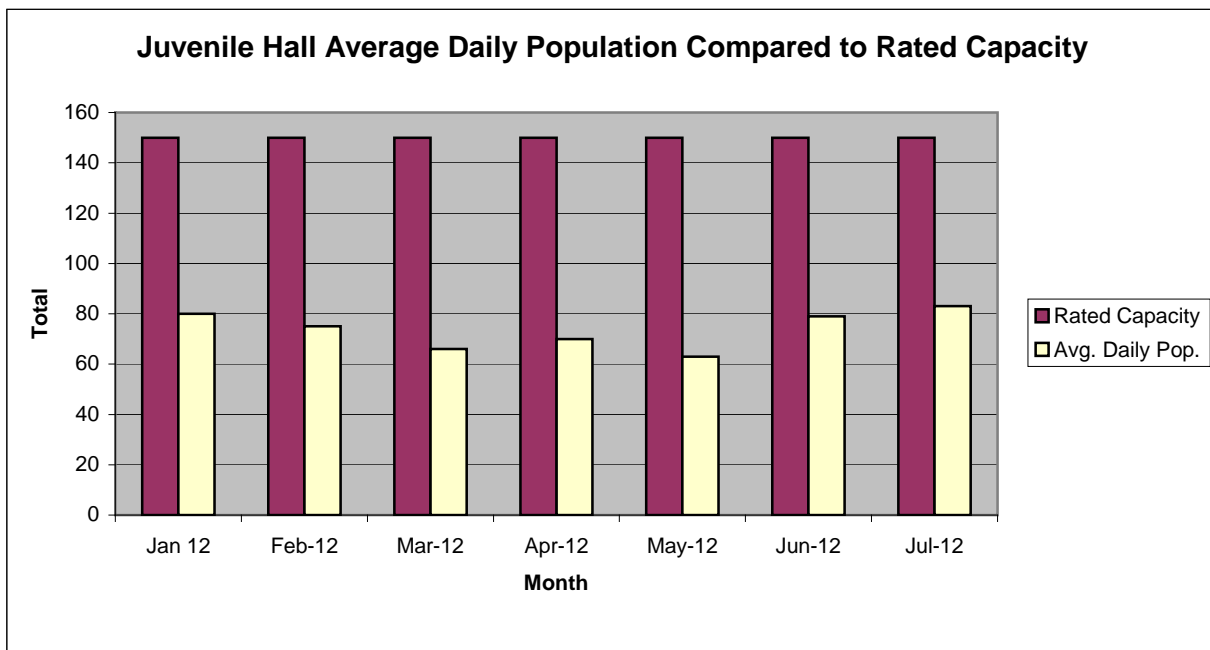


**Characteristics of Juvenile Hall Detainees on July 31st, 2012**

Referral Reason	MF*	Offense Description	Count	%
187 (A) PC	F	MURDER	2	2.47%
664 /187 (A) PC	F	ATTEMPTED MURDER	8	9.88%
261 (A)(2) PC	F	RAPE BY FORCE/FEAR/ETC	1	1.23%
288 (A) PC	F	LEWD OR LASCIVIOUS ACTS W/CHILD UNDER 14 YEARS	1	1.23%
246 PC	F	SHOOT AT INHABITED DWELLING/VEHICLE/ETC	1	1.23%
211 PC	F	ROBBERY	17	20.99%
459 PC	F	BURGLARY	1	1.23%
245 (A)(1) PC	F	FORCE OR ADW NOT FIREARM:GBI LIKELY	11	13.58%
12025 (A)(1) PC	F	CARRY CONCEALED WEAPON IN VEHICLE W/PRIOR FELONY CONVICTION	1	1.23%
25400 (C)(2) PC	F	CARRY CONCEALED STOLEN WEAPON	1	1.23%
25400 (C)(4) PC	F	CARRY CONCEALED WEAPON PROHIBITED CLASS/UNLAWFUL POSSESSION	1	1.23%
246.3(A) PC	F	WILLFUL DISCHARGE OF FIREARM IN A GROSSLY NEGLIGENT MANNER	1	1.23%
422 PC	F	THREATEN CRIME W/INTENT TO TERRORIZE	2	2.47%
487 (C) PC	F	GRAND THEFT FROM PERSON	3	3.70%
10851 (A) VC	F	TAKE VEHICLE W/O OWNER'S CONSENT/VEHICLE THEFT	2	2.47%
496 (A) PC	F	RECEIVE/ETC KNOWN STOLEN PROPERTY	2	2.47%
25400 (A)(2) PC	F	CARRY CONCEALED WEAPON ON PERSON	1	1.23%
25850 (C)(1) PC	F	CARRY LOADED FIREARM WITH PRIOR FELONY CONVICTION	1	1.23%
29610 PC	F	MINOR ILLEGALLY POSSESS CONCEALED WEAPON WITH PRIOR	1	1.23%
148 (A)(1) PC	M	OBSTRUCT/RESIST/ETC PUBLIC/PEACE OFFICER/EMERGENCY MED TECH	1	1.23%
594 (B)(1) PC	M	VANDALISM (\$10000 OR MORE)	1	1.23%
242 PC	M	BATTERY	1	1.23%
653.22(A) PC	M	LOITER:INTENT:PROSTITUTION	1	1.23%
777 (A)(2) WI	M	FAIL TO OBEY ORDER OF JUVENILE COURT:602 WI	5	6.17%
628.1 WI	M	VIOLATION(S) OF HOME SUPERVISION CONDITION	2	2.47%
737 WI	M	CHANGE OF PLACEMENT/PLACEMENT FAILURE	3	3.70%
BENCH WARRANT		BENCH WARRANT	3	3.70%
WRNT602		ARREST WARRANT	4	4.94%
CTORD 602		COURT ORDER	2	2.47%
*F=Felony; M=Misdemeanor		<b>Total</b>	<b>81</b>	<b>100.00%</b>

## San Francisco Juvenile Probation Department

	Jan 12	Feb-12	Mar-12	Apr-12	May-12	Jun-12	Jul-12	Aug-12	Sep-12	Oct-12	Nov-12	Dec-12
Rated Capacity	150	150	150	150	150	150	150					
Avg. Daily Pop.	80	75	66	70	63	79	83					



## Juvenile Hall Average Length of Stay

For the Month of July 2012

### <sup>1</sup>Released

<b>Range of Days</b>	<i>1-10 days</i>	<i>11-20 days</i>	<i>21-30 days</i>	<i>30 or more days</i>	<b>Total</b>
# of Youth Released	40	13	12	27	92
% of Population	43.48%	14.13%	13.04%	29.35%	100%
# of Days	143	210	295	2,848	3,496
% of Total Days	4.09%	6.01%	8.44%	81.46%	100%
Average Length of Stay	3.58	16.15	24.58	105.48	38.00

### <sup>2</sup>In Custody

<b>Range of Days</b>	<i>1-10 days</i>	<i>11-20 days</i>	<i>21-30 days</i>	<i>30 or more days</i>	<b>Total</b>
# of Youth Detained	24	9	7	41	81
% of Population	29.63%	11.11%	8.64%	50.62%	100%
# of Days	108	135	170	5,207	5,620
% of Total Days	1.92%	2.40%	3.02%	92.65%	100%
Average Length of Stay	4.50	15.00	24.29	127.00	69.38

Notes: Less than one day of stay is calculated as one day.

<sup>1</sup>Length of stay is calculated according to release date for those who are released.

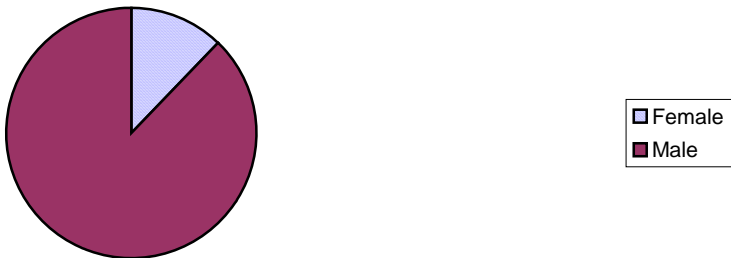
<sup>2</sup>For those still in custody, length of stay is calculated at the last day of the month.

## **Section III**

# **Demographics**

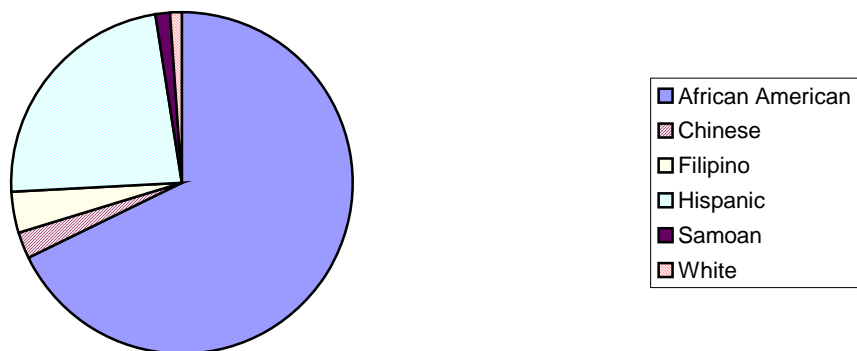
Gender	Frequency	Percent
Female	10	12.35%
Male	71	87.65%
<b>Total</b>	<b>81</b>	<b>100.00%</b>

**Demographic Characteristics  
Of Juvenile Hall Detainees on 7/31/12 by Gender**

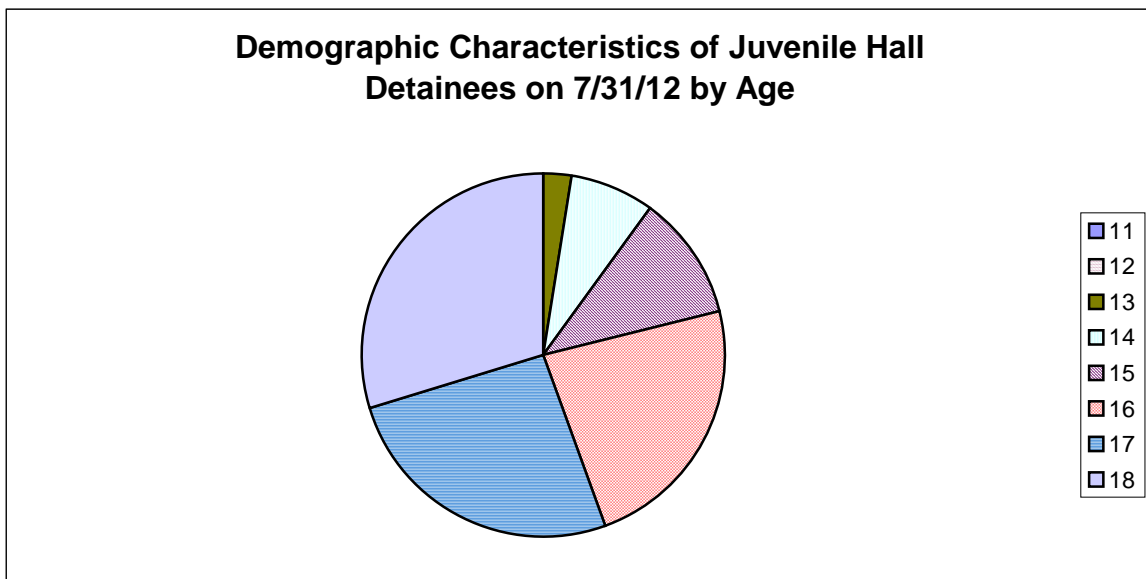


Race/Ethnic Origin	Frequency	Percent
African American	55	67.90%
Chinese	2	2.47%
Filipino	3	3.70%
Hispanic	19	23.46%
Samoan	1	1.23%
White	1	1.23%
<b>Total</b>	<b>81</b>	<b>100.00%</b>

**Demographic Characteristics of Juvenile Hall Detainees on  
7/31/12 by Race**

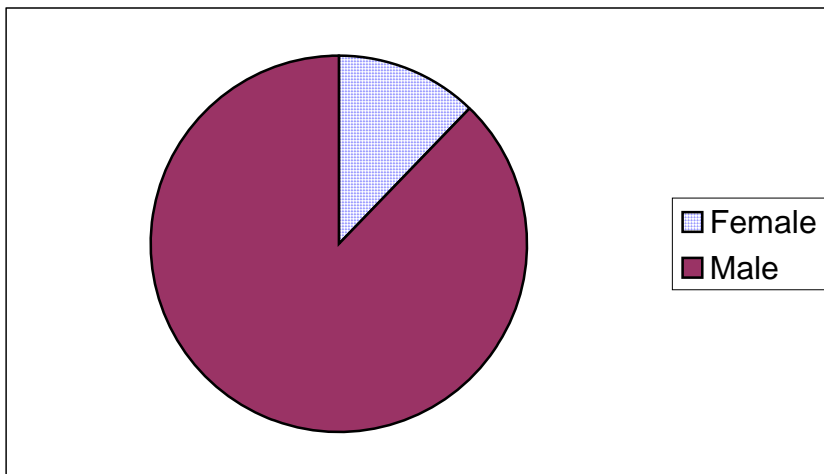


Age	Frequency	Percent
11	0	0.00%
12	0	0.00%
13	2	2.47%
14	6	7.41%
15	9	11.11%
16	19	23.46%
17	21	25.93%
18	24	29.63%
<b>Total</b>	<b>81</b>	<b>100.00%</b>



Demographic Characteristics of Juvenile Hall Detainees  
on 7/31/2012  
Age by Gender

Age	Female	Male	Total	
11	0	0	0	0.00%
12	0	0	0	0.00%
13	0	2	2	2.47%
14	0	6	6	7.41%
15	1	8	9	11.11%
16	3	16	19	23.46%
17	4	17	21	25.93%
18 and over	2	22	24	29.63%
<b>Total</b>	<b>10</b>	<b>71</b>	<b>81</b>	<b>100.00%</b>
	<b>12.35%</b>	<b>87.65%</b>	<b>100.00%</b>	





Demographic Characteristics  
Of Juvenile Hall Detainees on July 31<sup>st</sup>, 2012

---

<b>Geographic Residence of Youth</b>	<b>Count</b>	<b>%</b>
Richmond	0	0.0%
Marina	0	0.0%
North of Market/Downtown	3	3.7%
Treasure Island/Yerba Buena Island	2	2.5%
Western Addition	5	6.2%
South of Market/Tenderloin	3	3.7%
Sunset	3	3.7%
Haight Ashbury/Castro/Upper Market	1	1.2%
Inner Mission	4	4.9%
Potrero	1	1.2%
Parkside	0	0.0%
Ingleside (West of Twin Peaks)	7	8.6%
Outer Mission	24	29.6%
Bayview	20	24.7%
Non-San Francisco and Unavailable	8	9.9%
<b>Total</b>	<b>81</b>	<b>100.0%</b>

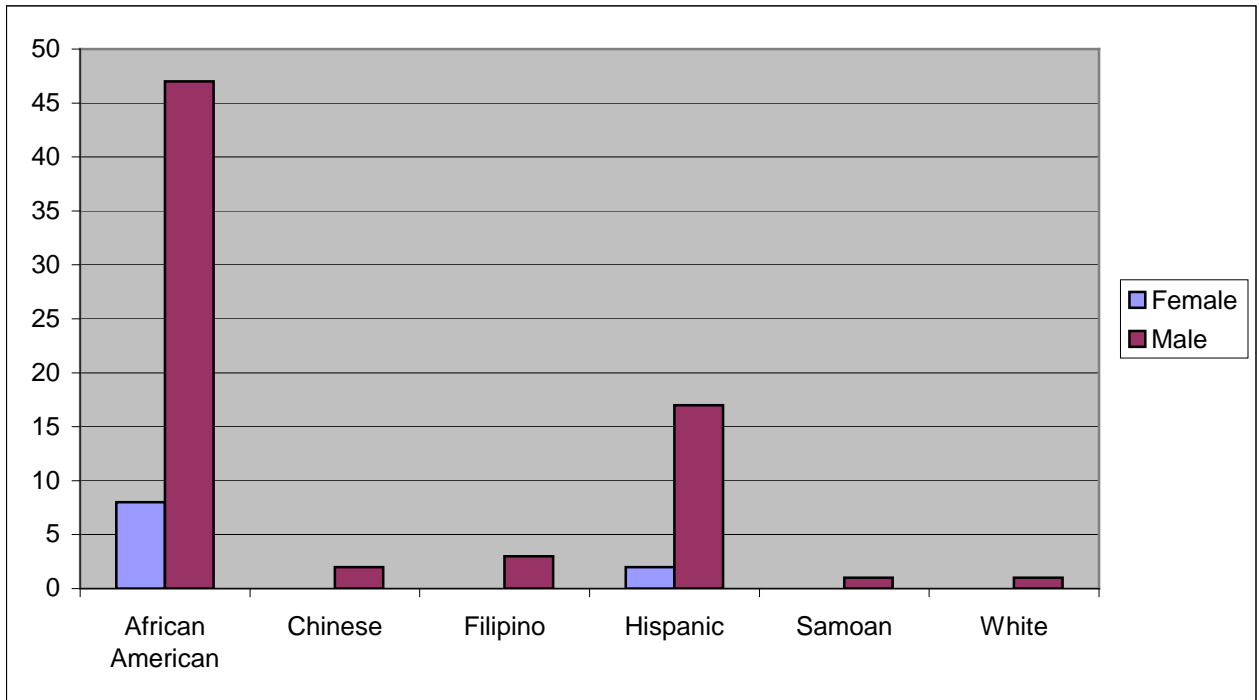
<b>Non-San Francisco and Unavailable</b>	<b>Count</b>	<b>%</b>
Daly City	1	12.5%
El Cerrito	1	12.5%
Fairfield	1	12.5%
Oakland	3	37.5%
Vallejo	1	12.5%
Unavailable	1	12.5%
<b>Total</b>	<b>8</b>	<b>100.0%</b>

Demographic Characteristics  
Of Juvenile Hall Detainees on July 31<sup>st</sup>, 2012

---

**Race/Ethnic Origin by Gender**

Race/Ethnicity	Female	Male	Total	%
African American	8	47	55	67.9%
Chinese	0	2	2	2.5%
Filipino	0	3	3	3.7%
Hispanic	2	17	19	23.5%
Samoan	0	1	1	1.2%
White	0	1	1	1.2%
<b>Total</b>	<b>10</b>	<b>71</b>	<b>81</b>	<b>100.0%</b>

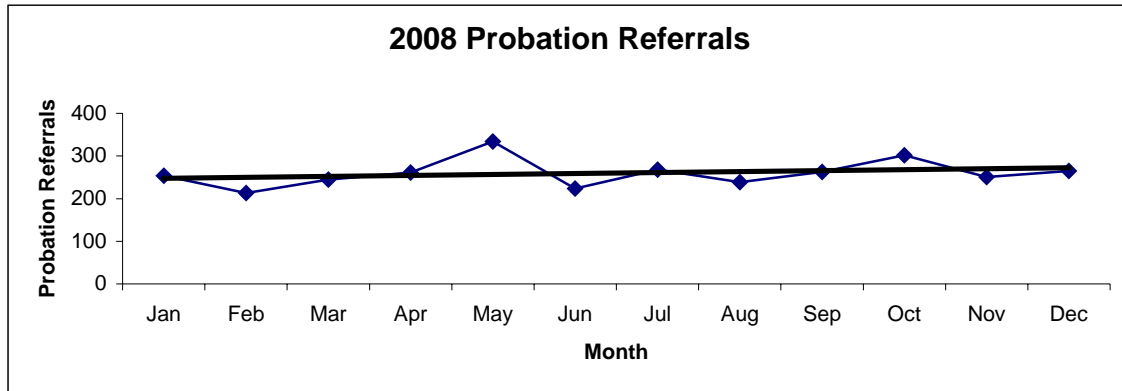


# **Section IV**

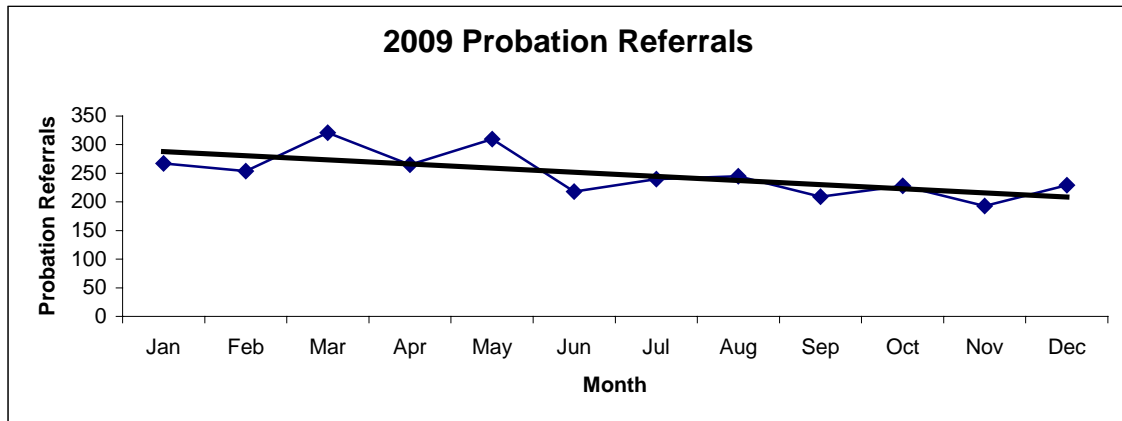
## **Historical Information**

San Francisco Juvenile Probation Department  
**Probation Referrals (all sources) By Month**  
 (2008-2010)

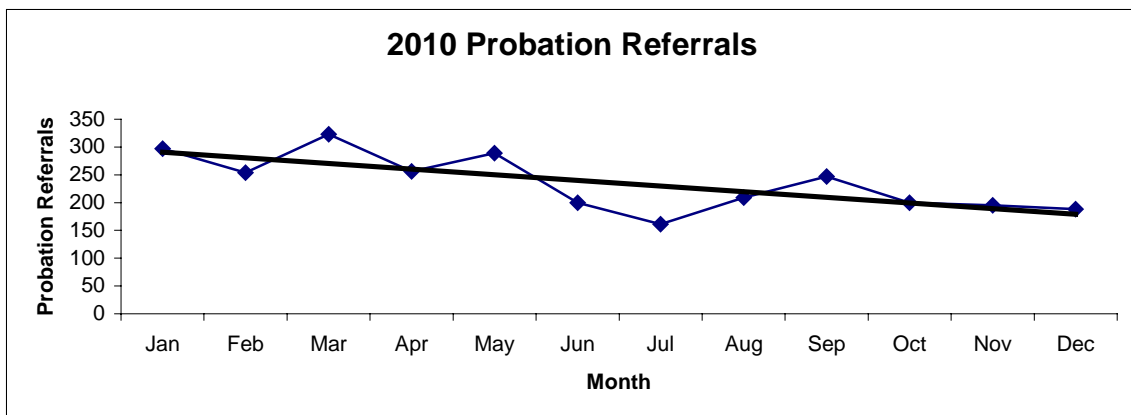
2008 Probation Referrals	Jan	Feb	Mar	Apr	May	Jun	Jul	Aug	Sep	Oct	Nov	Dec	Total
	254	213	245	261	334	224	268	239	263	302	251	265	<b>3119</b>



2009 Probation Referrals	Jan	Feb	Mar	Apr	May	Jun	Jul	Aug	Sep	Oct	Nov	Dec	Total
	267	254	321	265	310	218	240	245	209	228	193	229	<b>2979</b>

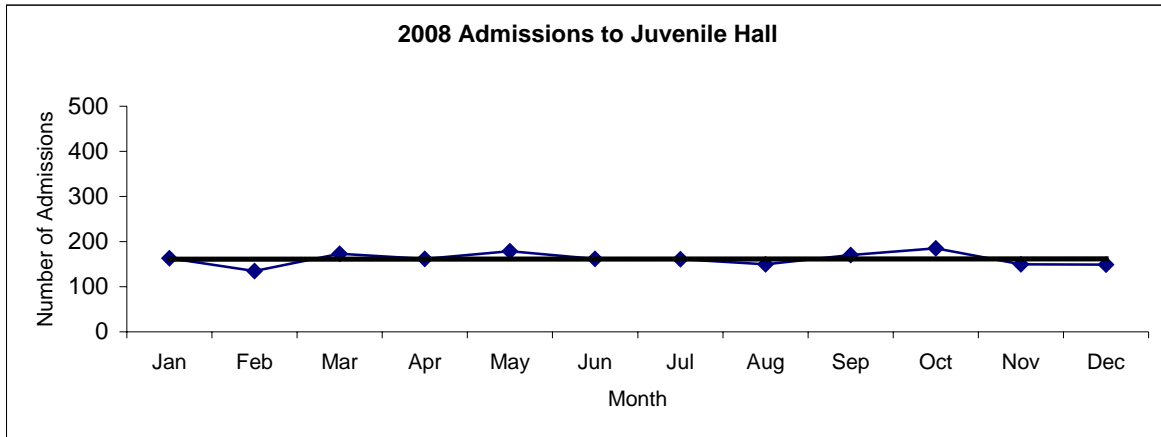


2010 Probation Referrals	Jan	Feb	Mar	Apr	May	Jun	Jul	Aug	Sep	Oct	Nov	Dec	Total
	297	254	323	256	289	200	161	209	247	200	195	188	<b>2819</b>

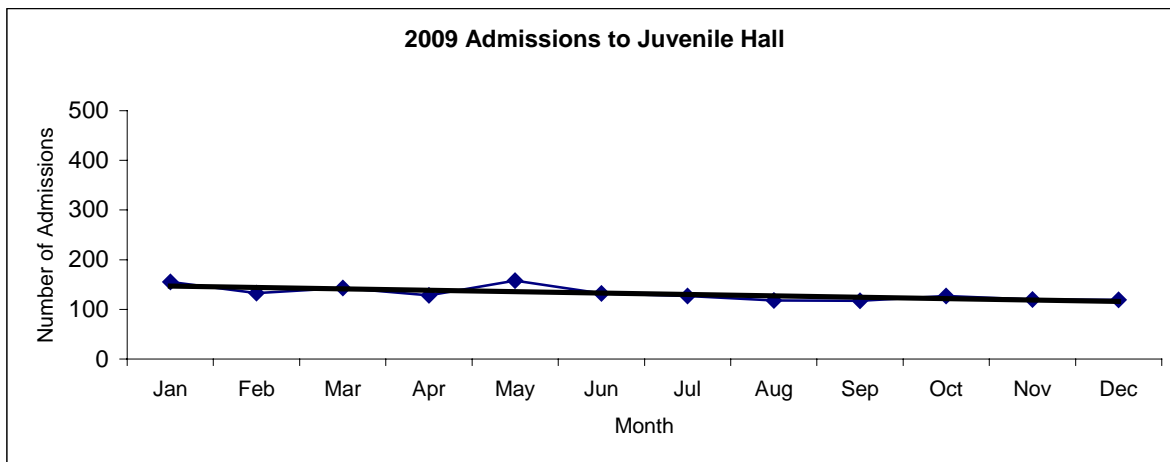


**San Francisco Juvenile Probation**  
**Juvenile Hall Admissions By Month**  
(2008-2010)

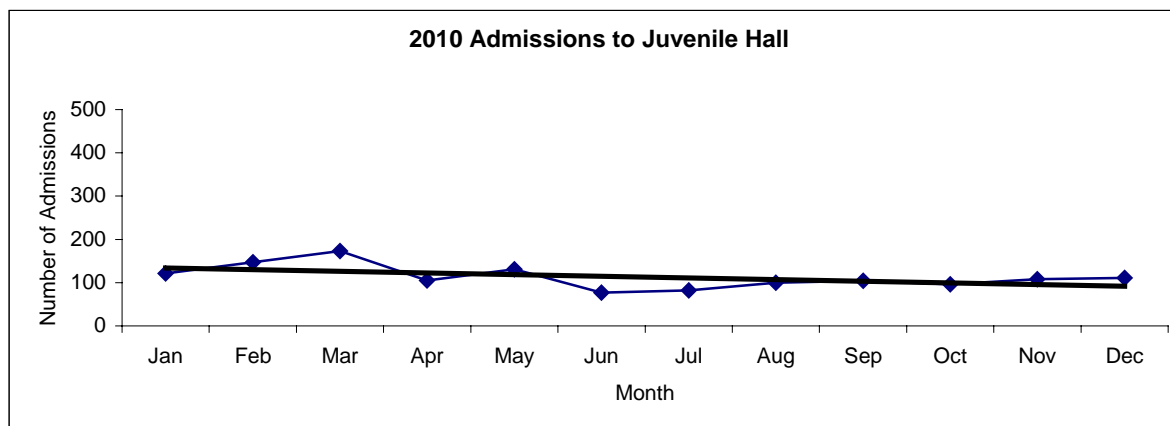
2008 Admissions	Jan	Feb	Mar	Apr	May	Jun	Jul	Aug	Sep	Oct	Nov	Dec	Total
	163	135	173	162	179	162	161	150	170	185	150	149	<b>1939</b>



2009 Admissions	Jan	Feb	Mar	Apr	May	Jun	Jul	Aug	Sep	Oct	Nov	Dec	Total
	155	133	143	128	158	132	127	118	117	127	120	119	<b>1577</b>

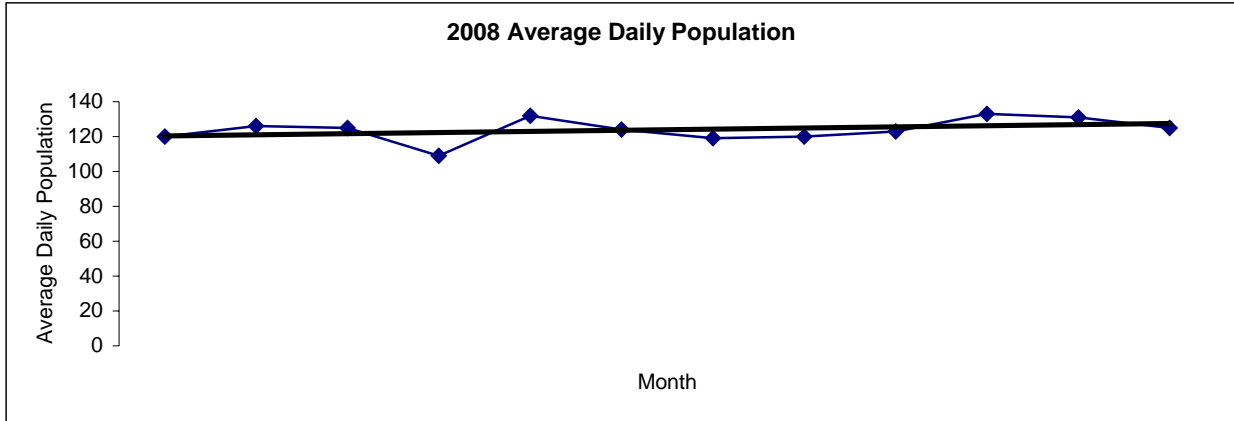


2010 Admissions	Jan	Feb	Mar	Apr	May	Jun	Jul	Aug	Sep	Oct	Nov	Dec	Total
	121	147	173	105	131	77	82	100	104	96	108	111	<b>1355</b>

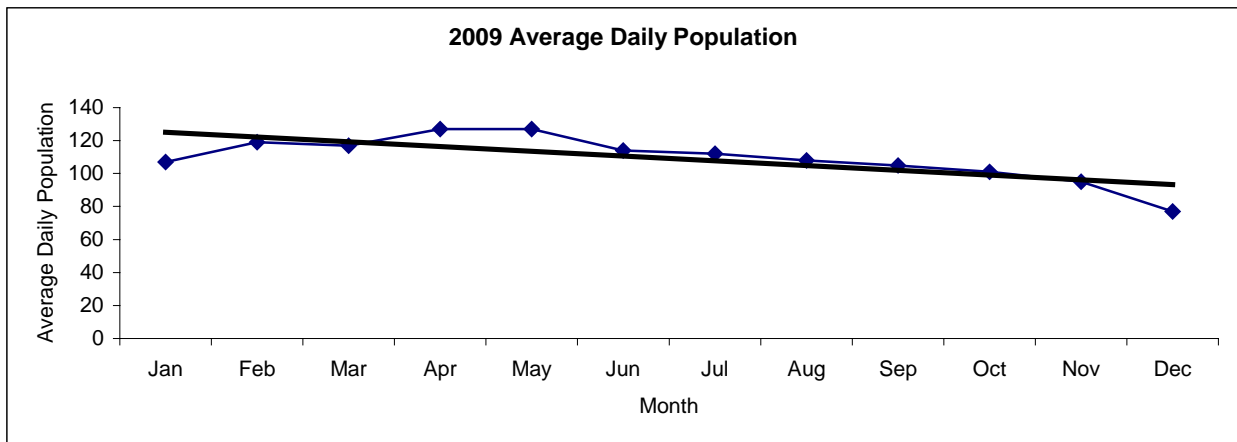


San Francisco Juvenile Probation  
**Juvenile Hall Average Daily Population By Month**  
 (2008-2010)

2008 Avg. Daily Pop.	Jan	Feb	Mar	Apr	May	Jun	Jul	Aug	Sep	Oct	Nov	Dec	Total
	120	126	125	109	132	124	119	120	123	133	131	125	<b>124</b>



2009 Avg. Daily Pop.	Jan	Feb	Mar	Apr	May	Jun	Jul	Aug	Sep	Oct	Nov	Dec	Total
	107	119	117	127	127	114	112	108	105	101	95	77	<b>109</b>



2010 Avg. Daily Pop.	Jan	Feb	Mar	Apr	May	Jun	Jul	Aug	Sep	Oct	Nov	Dec	Total
	85	104	110	107	99	97	90	88	90	84	79	92	<b>94</b>

