

City and County of San Francisco



Juvenile Probation Department

Monthly Report for February 2013

Presented to the Juvenile Probation Commission

March 13th, 2013

William P. Siffermann
Chief Probation Officer

Prepared by Jose Luis Perla
Information Technology Director
(415) 753-7686
jose.perla@sfgov.org

Table of Contents

Section I Summary Reports

Juvenile Hall, Log Cabin Ranch Summary Statistics	1
Probation Services Summary and California Youth Authority Statistics.....	2
Active Cases by Units.....	3

Section II Current Month General Detail

Probation Referrals, Juvenile Admissions And Average Daily Population	4
Juvenile Hall Admissions and Average Daily Population.....	5
Commitments to out-of-home placement	6
Commitments to California Youth Authority	7
Log Cabin Ranch Admissions and Average Daily Population.....	8
Probation Referrals	9
Juvenile Hall And Log Cabin Ranch Incident Report	10
Bay Area Resident Juvenile Hall Comparison	11
Juvenile Hall Admissions	12
Juvenile Hall Detainees by Detention Reason.....	13
Juvenile Hall Average Daily Population by Rated Capacity	14
Juvenile Hall Average Length of Stay	15

Section III Demographics

Juvenile Hall Detainees by Sex and Race/Ethnic Origin.....	16
Juvenile Hall Detainees by Age.....	17
Juvenile Hall Detainees by Age and Sex	18
Juvenile Hall Detainees by Geographic Residence of Youth.....	19
Juvenile Hall Detainees by Race/Ethnic Origin and Sex.....	20

Section IV
Historical Information

2004-2006 Probation Referrals	21
2004-2006 Juvenile Hall Admissions	22
2004-2006 Juvenile Hall Average Daily Population	23



Section I

Summary Reports

Summary Report for the Month of February 2013

Juvenile Hall	<i>January 2012</i>	<i>January 2013</i>	<i>February 2012</i>	<i>February 2013</i>	<i>YTD 2012</i>	<i>YTD 2013</i>
Admissions	83	79	61	67	144	146
Average Daily Population	80	75	75	75	78	75
Average Length of Stay (Releases)	22.63	28.92	38.44	20.10	30.54	24.51
Average Length of Stay (In Custody)	69.65	63.07	76.91	72.11	73.28	67.59
Releases	81	87	82	67	163	154
Log Cabin Ranch						
Admissions:						
First Time Commitments	2	2	6	1	8	3
Recommitments	0	0	0	0	0	0
<i>Total</i>	2	2	6	1	8	3
Releases:						
Graduated	1	0	0	0	1	0
Escape	0	0	0	0	0	0
Other releases	3	0	2	0	5	0
<i>Total</i>	4	0	2	0	6	0
Average Daily Population	15	16	17	18	16	17

Summary Report for the Month of February 2013

Probation Services	<i>January 2013</i>	<i>February 2013</i>	<i>Year To Date 2013</i>
Probation Referrals	132	142	274
Total Petitions including violation of probation	67	60	127
Selected Court Dispositions:			
California Youth Authority	1	1	2
Log Cabin Ranch	2	0	2
Out of Home Placement	9	11	20
Ward Probation	10	19	29
Non-Ward Probation (725a WI)	3	2	6
Informal Probation (654 WI)	1	5	6
Violation of Probation Petitions Filed	6	10	16
 California Youth Authority Monthly Count San Francisco County Juvenile Court Cases February 28th, 2013 			
Category	Institutions	Parole	
Males			
White	0	0	
Hispanic	2	0	
African American	4	0	
Asian	1	0	
Native American	0	0	
Filipino	0	0	
Pacific Islander	0	0	
Other	0	0	
Total	7	0	
Females			
White	0	0	
Hispanic	0	0	
African American	0	0	
Asian	0	0	
Native American	0	0	
Filipino	0	0	
Pacific Islander	0	0	
Other	0	0	
Total	0	0	
Grand Total	7	0	

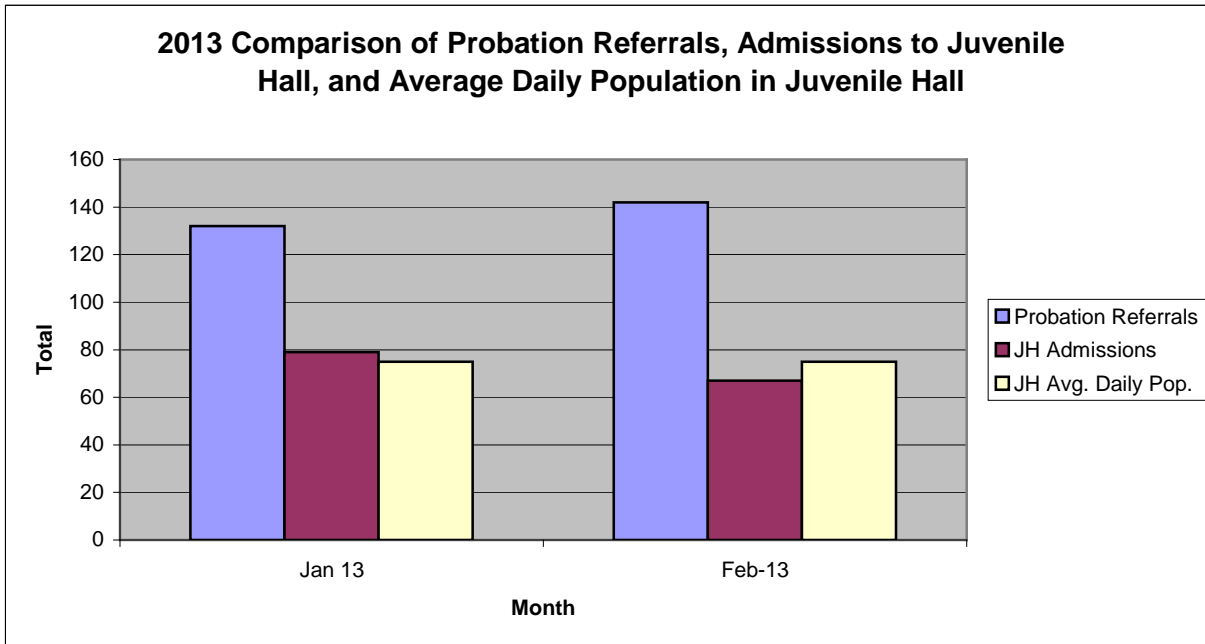
Summary Report for the Month of February 2013

Probation Services			
Active Cases by Units	January 2013	February 2013	February Average # Youth by PO
CARC	167	174	174
Intake Green (Custody Screening Investigation)	102	102	12
Intake Gold (Probation Services 1)	130	140	20
Family Integrated Treatment Services (FITS) PS2	135	129	12
Serious Offenders Program (Probation Services 3)	160	159	15
Out-of-home Placement (Probation Services 4)	144	154	19
<i>Total</i>	838	858	42
Total Active Intake Cases	413	431	
Total Probation/Supervision Cases	425	427	
<i>Total</i>	838	858	

Section II
Current Month
General Detail

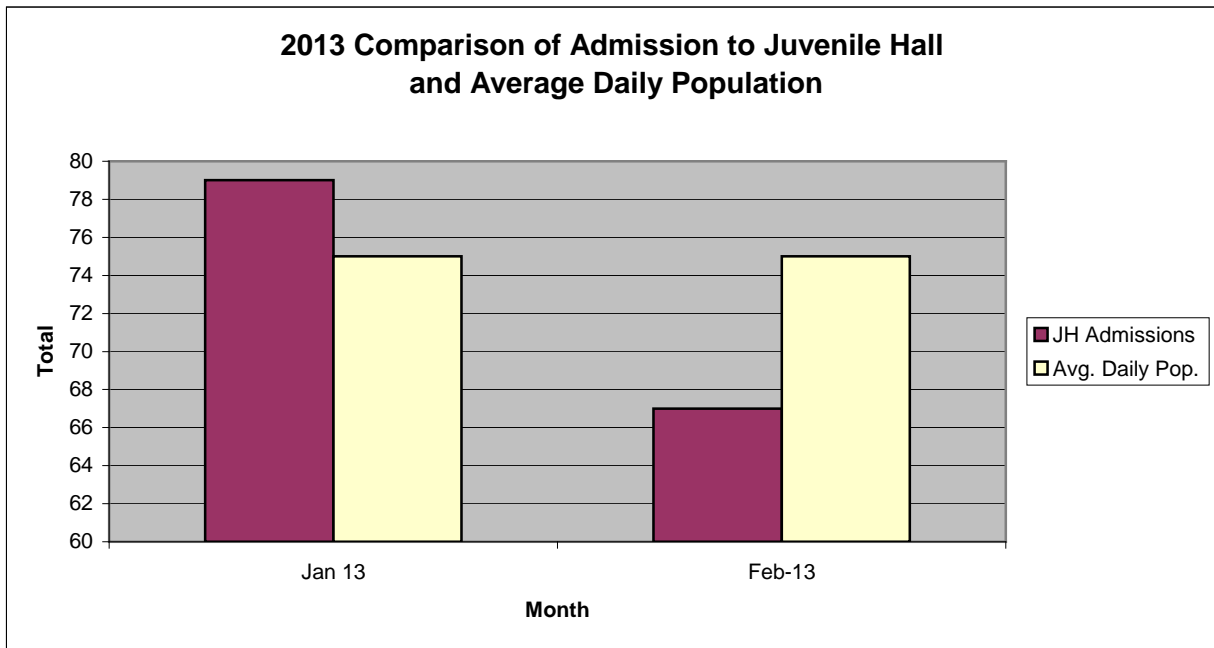
San Francisco Juvenile Probation Department

	Jan 13	Feb-13	Mar-13	Apr-13	May-13	Jun-13	Jul-13	Aug-13	Sep-13	Oct-13	Nov-13	Dec-13
Probation Referrals	132	142										
JH Admissions	79	67										
JH Avg. Daily Pop.	75	75										



San Francisco Juvenile Probation Department

	Jan 13	Feb-13	Mar-13	Apr-13	May-13	Jun-13	Jul-13	Aug-13	Sep-13	Oct-13	Nov-13	Dec-13
JH Admissions	79	67										
Avg. Daily Pop.	75	75										

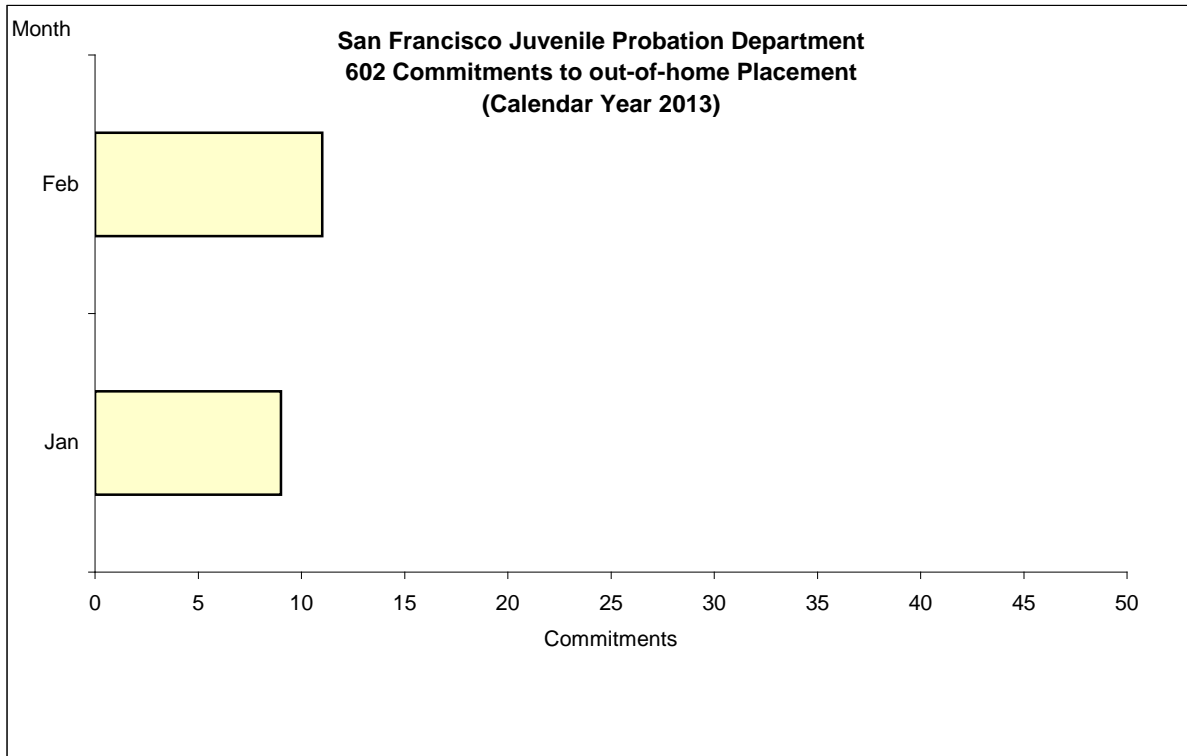


Out-of-Home Placement¹

Commitments of 602's

Calendar Year 2013

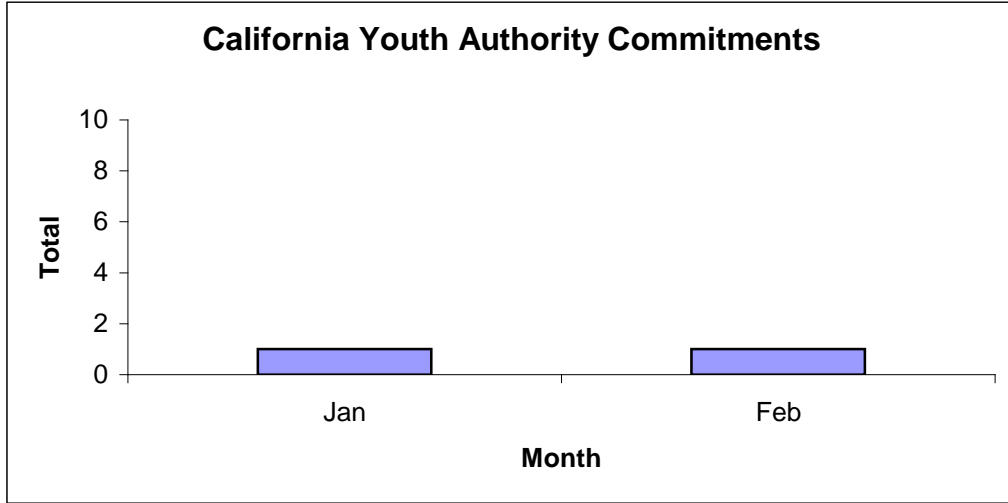
Commitments	Jan	Feb	Mar	Apr	May	Jun	Jul	Aug	Sep	Oct	Nov	Dec	Total
2013	9	11											20



¹ This report is based on 602 Commitments to out-of-home placements. If there is a 601 commitment, it will show as a footnote here. Figures are regularly updated to include reports from previous reporting periods.

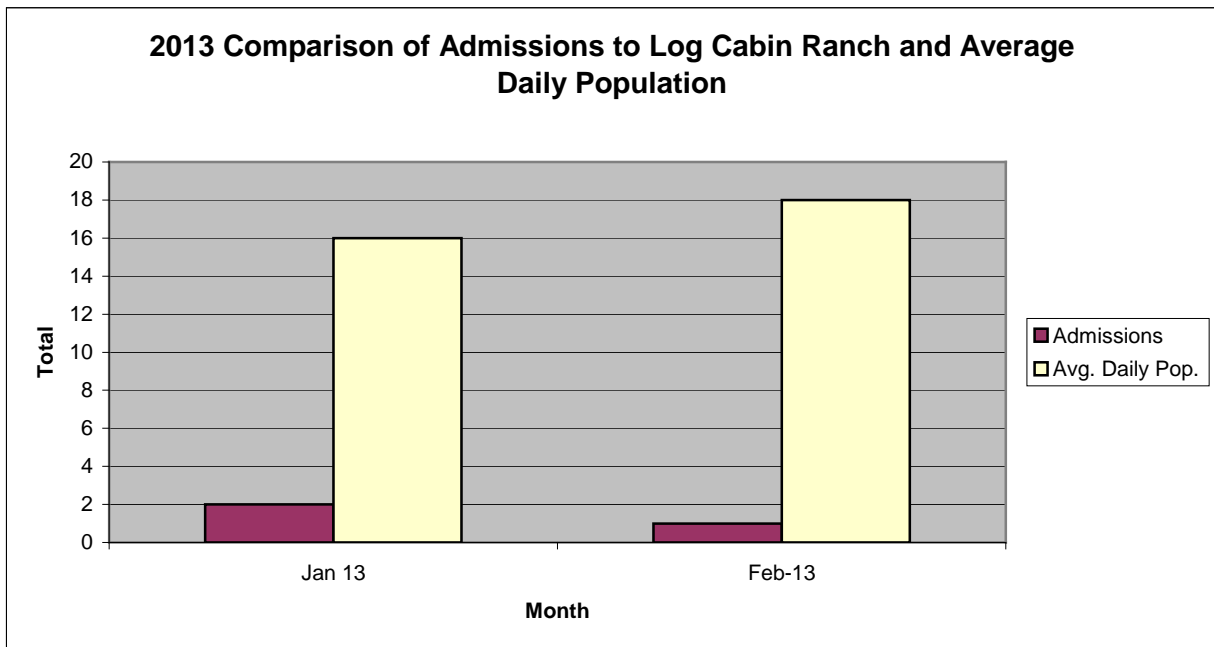
California Youth Authority
 Commitments
 (Calendar Year 2013)

Commitments	Jan	Feb	Mar	Apr	May	Jun	Jul	Aug	Sep	Oct	Nov	Dec	Total
2013	1	1											2



San Francisco Juvenile Probation Department

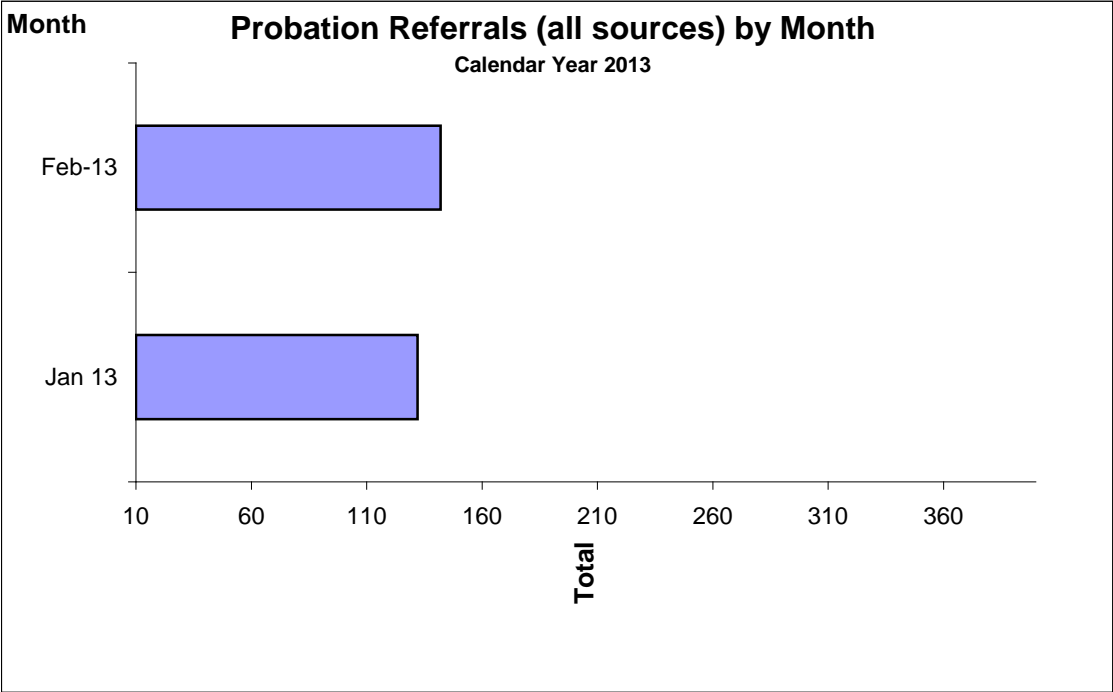
	Jan 13	Feb-13	Mar-13	Apr-13	May-13	Jun-13	Jul-13	Aug-13	Sep-13	Oct-13	Nov-13	Dec-13
Admissions	2	1										
Avg. Daily Pop.	16	18										



Probation Referrals by Month Calendar Year 2013

Probation Referrals (all sources) by Month (602 W&I)

Jan 13	132
Feb-13	142
Mar-13	
Apr-13	
May-13	
Jun-13	
Jul-13	
Aug-13	
Sep-13	
Oct-13	
Nov-13	
Dec-13	

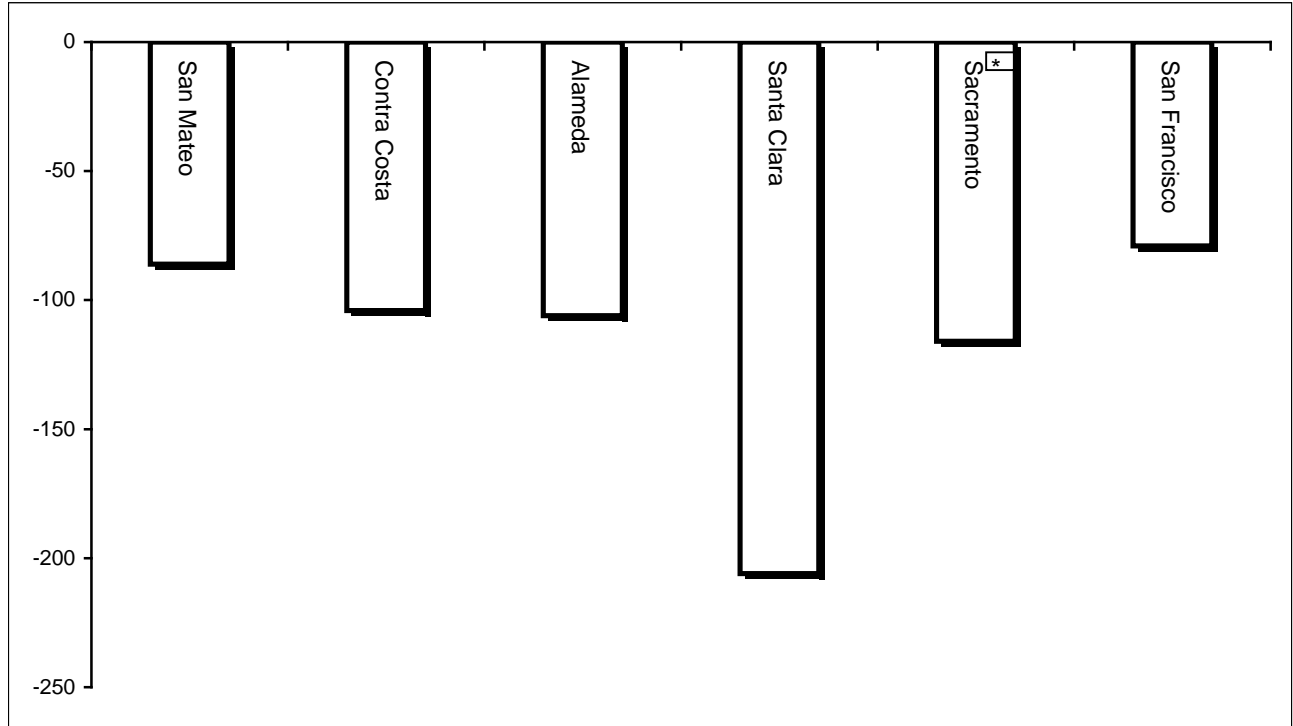


San Francisco Juvenile Probation Department
 Monthly Incident Report Form
 February 2013

Juvenile Hall	Battery on Staff	Injury to Staff Due to Restrain of Minor	Fights Minor on Minor	Battery Youth on Youth	Attempted Escape	AWOL	Attempted Suicide	Serious Contraband (Weapon illegal drug)	Use of Force	Self Inflicted Injuries
	0	0	0	0	0	0	0	10	0	0
	Assaults Minor on Minor	Battery on Staff with Injury	Fire	Fight with Injury	Battery Youth on Youth with Injury	Escape	Death	Suicide	Major Property Destruction	Use of Restraints (Handcuffs/ Shackles)
0	0	0	0	0	0	0	0	0	2	2
Log Cabin Ranch	Battery on Staff	Injury to Staff due to Restraint of Minor	Fight	Battery Youth on Youth	Attempted Escape	AWOL	Attempted Suicide	Serious Contraband	Battery on Staff with Injury	Fire
	0	0	0	0	0	0	0	0	0	0
	Fight With Injury	Battery Youth on Youth with Injury	Escape	Death	Suicide	Major Property Destruction				
0	0	0	0	0	0	0				

Bay Area Resident Juvenile Hall Comparison Over/Under Capacity

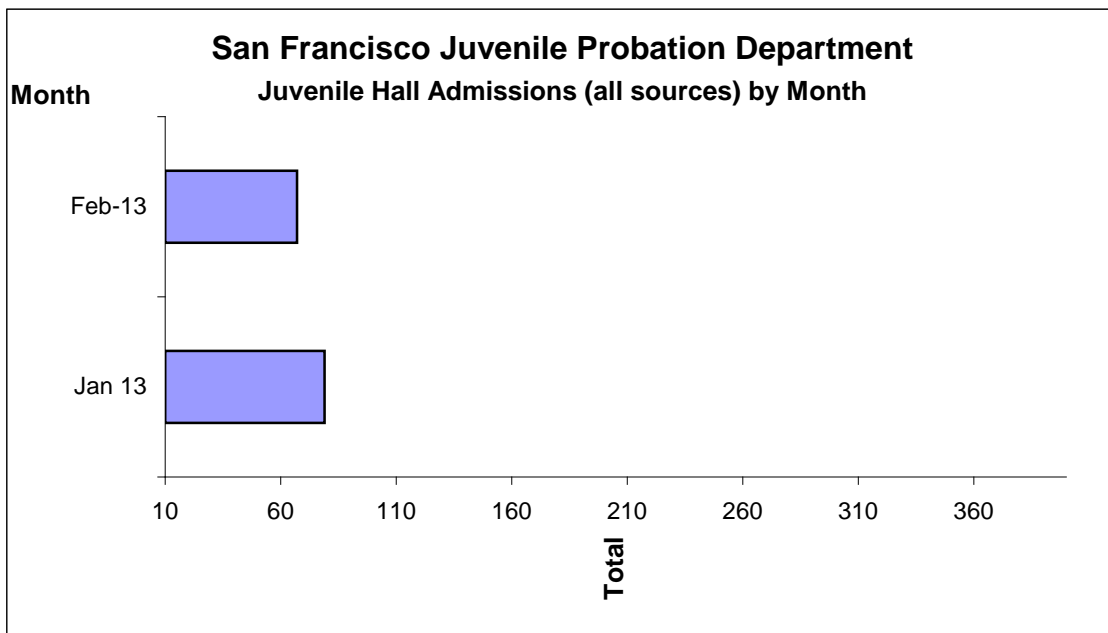
March 3rd, 2013



	Rated Capacity	Actual	Over/Under Capacity
San Mateo	180	94	-86
Contra Costa	240	136	-104
Alameda	280	174	-106
Santa Clara	360	154	-206
Sacramento	308	192	-116
San Francisco	150	71	-79

Juvenile Hall Admissions by Month Calendar Year 2013

Jan 13	79
Feb-13	67
Mar-13	
Apr-13	
May-13	
Jun-13	
Jul-13	
Aug-13	
Sep-13	
Oct-13	
Nov-13	
Dec-13	



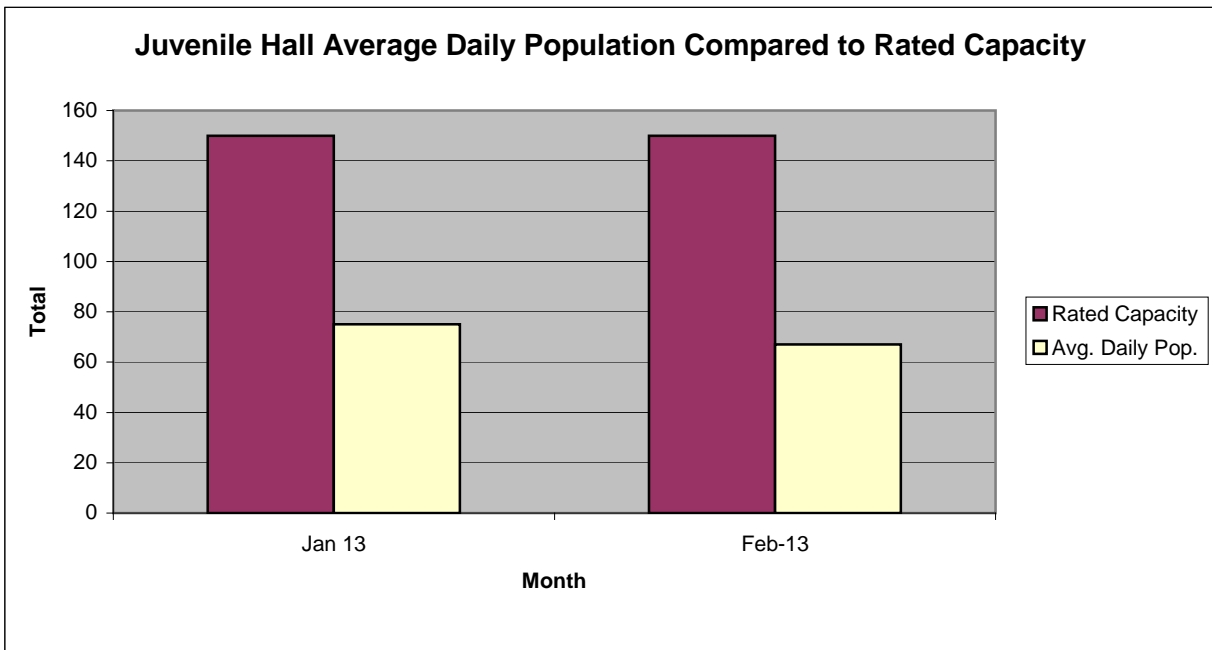
Characteristics of Juvenile Hall Detainees on February 28th, 2013

Literal	Referral Reason	MFI	Count	%
MURDER	187 (A) PC	F	1	1.37%
KIDNAPPING FOR RANSOM	209 (A) PC	F	1	1.37%
ATTEMPTED MURDER	664 /187 (A) PC	F	6	8.22%
ORAL COPULATION IN CONCERT BY THREAT OF RETALIATION	288 A(D)(2) PC	F	1	1.37%
RAPE BY FORCE/FEAR/ETC	261 (A)(2) PC	F	1	1.37%
ROBBERY	211 PC	F	8	10.96%
BURGLARY:FIRST DEGREE	459 PC	F	1	1.37%
ADW WITH FORCE:POSSIBLE GBI	245 (A)(4) PC	F	1	1.37%
FORCE OR ADW NOT FIREARM:GBI LIKELY	245 (A)(1) PC	F	2	2.74%
CARRY CONCEALED WEAPON PROHIBITED CLASS/UNLAWFUL POSSESSION	25400 (C)(4) PC	F	2	2.74%
THREATEN CRIME W/INTENT TO TERRORIZE	422 PC	F	3	4.11%
GRAND THEFT FROM PERSON	487 (C) PC	F	1	1.37%
TAKE VEHICLE W/O OWNER'S CONSENT/VEHICLE THEFT	10851 (A) VC	F	1	1.37%
RECEIVE/ETC KNOWN STOLEN PROPERTY	496 (A) PC	F	2	2.74%
POSSESS CONTROLLED SUBSTANCE	11377 (A) HS	F	1	1.37%
POSSESS CONCENTRATED CANNABIS	11357 (A) HS	F	1	1.37%
CONVICTED PERSON POSS/OWN/ETC FIREARM:PROBATION RESTRICTION	29815 (A) PC	F	1	1.37%
MFG/IMPORT/ETC SHORT BARRELED RIFLE	33215 PC	F	1	1.37%
VANDALISM (\$400 OR MORE)	594 (B)(1) PC	F	1	1.37%
OBSTRUCT/RESIST/ETC PUBLIC/PEACE OFFICER/EMERGENCY MED TECH	148 (A)(1) PC	M	3	4.11%
LOITER:INTENT:PROSTITUTION	653.22 (A) PC	M	1	1.37%
FAIL TO OBEY ORDER OF JUVENILE COURT:602 WI	777 (A)(2) WI	M	6	8.22%
CHANGE OF PLACEMENT/PLACEMENT FAILURE	737 WI	M	4	5.48%
VIOLATION(S) OF HOME SUPERVISION CONDITION	628.1 WI	M	5	6.85%
ARREST WARRANT	WRNT602		6	8.22%
BENCH WARRANT	BENCH WARRANT		4	5.48%
COURT ORDER	CTORD 602		8	10.96%
		Total	73	100.00%

M=Misdemeanor; F=Felony

San Francisco Juvenile Probation Department

	Jan 13	Feb-13	Mar-13	Apr-13	May-13	Jun-13	Jul-13	Aug-13	Sep-13	Oct-13	Nov-13	Dec-13
Rated Capacity	150	150										
Avg. Daily Pop.	75	67										



Juvenile Hall Average Length of Stay

For the Month of February 2013

¹Released

Range of Days	<i>1-10 days</i>	<i>11-20 days</i>	<i>21-30 days</i>	<i>30 or more days</i>	Total
# of Youth Released	26	19	7	15	67
% of Population	38.81%	28.36%	10.45%	22.39%	100%
# of Days	119	284	181	763	1,347
% of Total Days	8.83%	21.08%	13.44%	56.64%	100%
Average Length of Stay	4.58	14.95	25.86	50.87	20.10

²In Custody

Range of Days	<i>1-10 days</i>	<i>11-20 days</i>	<i>21-30 days</i>	<i>30 or more days</i>	Total
# of Youth Detained	22	4	10	37	73
% of Population	30.14%	5.48%	13.70%	50.68%	100%
# of Days	118	62	247	4,837	5,264
% of Total Days	2.24%	1.18%	4.69%	91.89%	100%
Average Length of Stay	5.36	15.50	24.70	130.73	72.11

Notes: Less than one day of stay is calculated as one day.

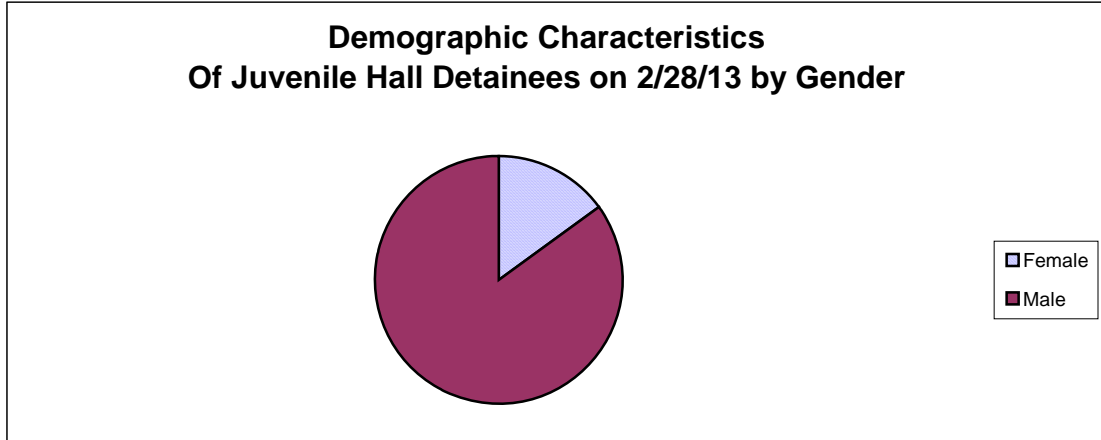
¹Length of stay is calculated according to release date for those who are released.

²For those still in custody, length of stay is calculated at the last day of the month.

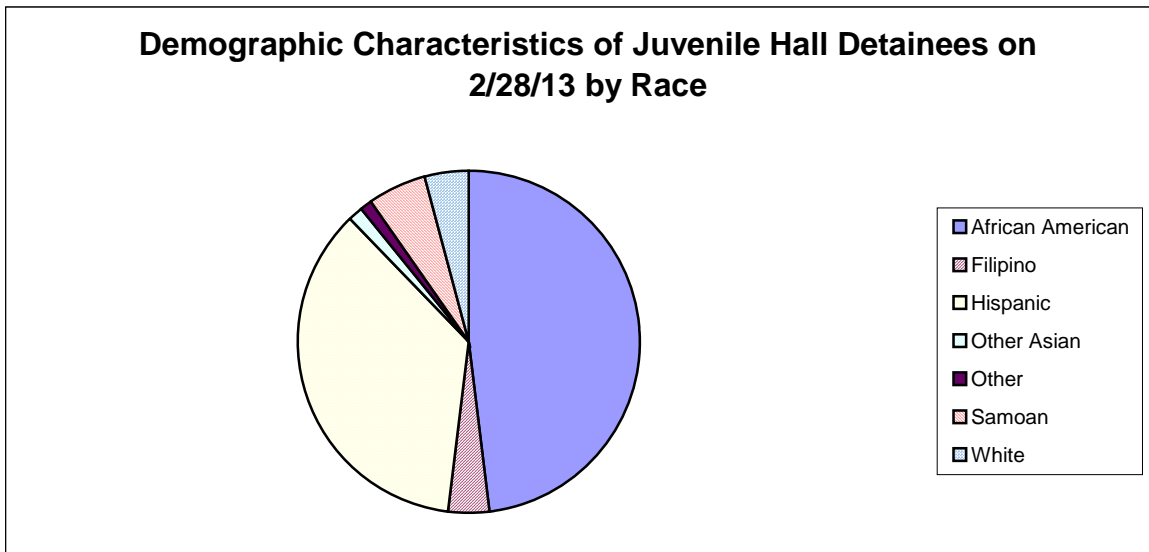
Section III

Demographics

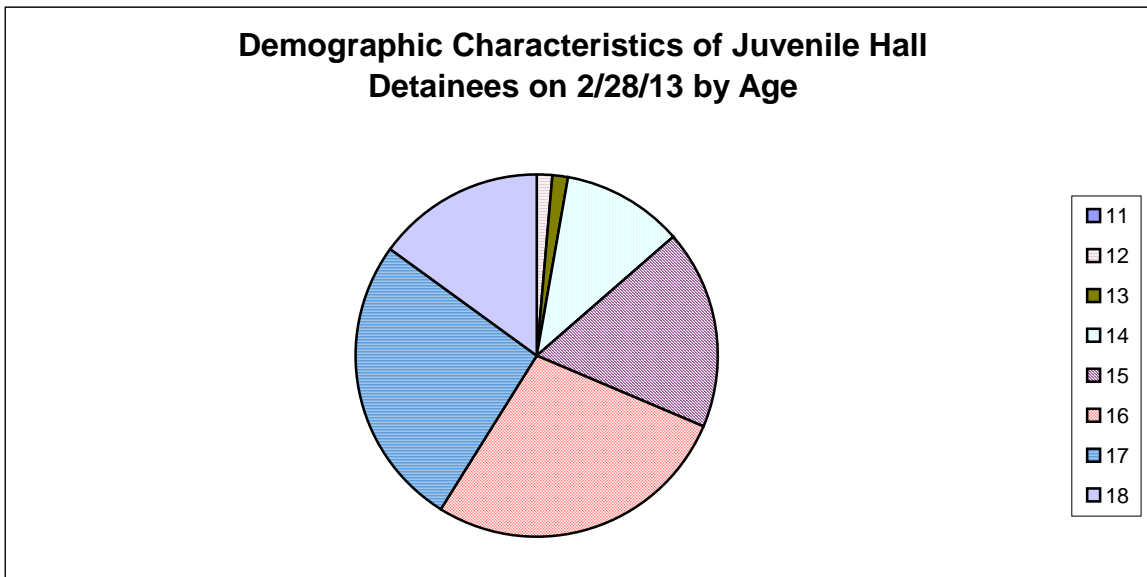
Gender	Frequency	Percent
Female	11	15.07%
Male	62	84.93%
Total	73	100.00%



Race/Ethnic Origin	Frequency	Percent
African American	35	47.95%
Filipino	3	4.11%
Hispanic	26	35.62%
Other Asian	1	1.37%
Other	1	1.37%
Samoan	4	5.48%
White	3	4.11%
Total	73	100.00%

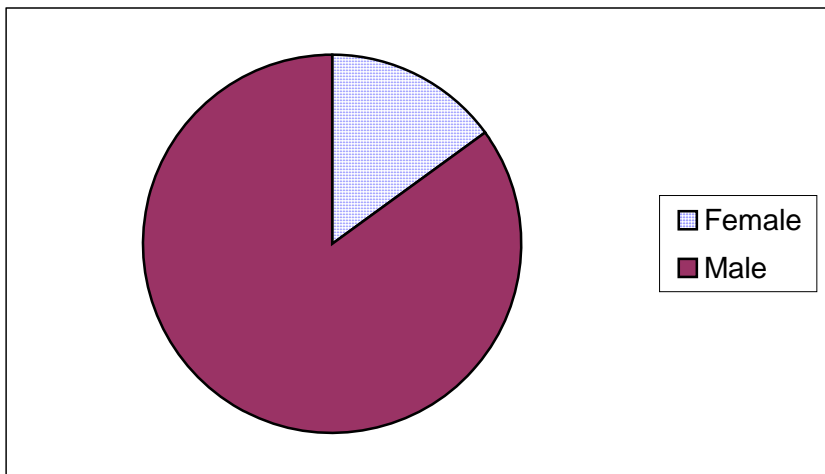


Age	Frequency	Percent
11	0	0.00%
12	1	1.37%
13	1	1.37%
14	8	10.96%
15	13	17.81%
16	20	27.40%
17	19	26.03%
18	11	15.07%
Total	73	100.00%



Demographic Characteristics of Juvenile Hall Detainees
on 2/28/2013
Age by Gender

Age	Female	Male	Total	
11	0	0	0	0.00%
12	0	1	1	1.37%
13	1	0	1	1.37%
14	3	5	8	10.96%
15	2	11	13	17.81%
16	0	20	20	27.40%
17	4	15	19	26.03%
18 and over	1	10	11	15.07%
Total	11	62	73	100.00%
	15.07%	84.93%	100.00%	



Demographic Characteristics
Of Juvenile Hall Detainees on February 28th, 2013

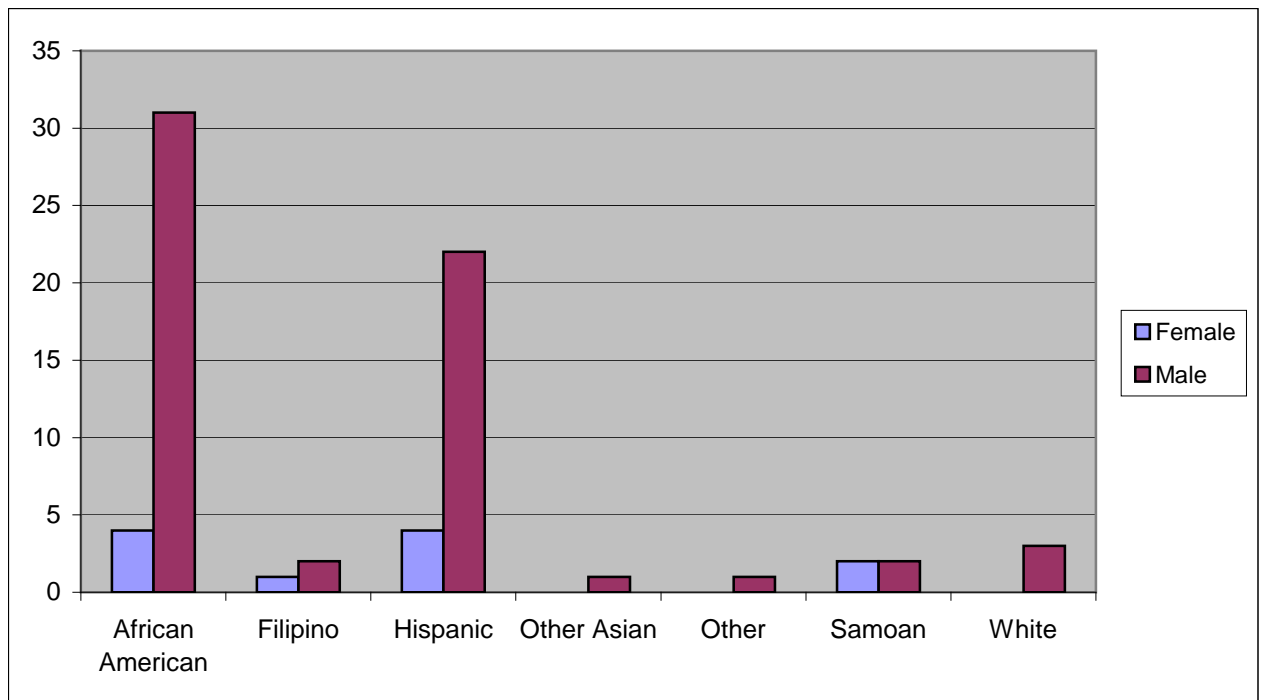
Geographic Residence of Youth	Count	%
Richmond	3	4.1%
Marina	0	0.0%
North of Market/Downtown	2	2.7%
Treasure Island/Yerba Buena Island	2	2.7%
Western Addition	6	8.2%
South of Market/Tenderloin	3	4.1%
Sunset	1	1.4%
Haight Ashbury/Castro/Upper Market	1	1.4%
Inner Mission	8	11.0%
Potrero	2	2.7%
Parkside	2	2.7%
Ingleside (West of Twin Peaks)	3	4.1%
Outer Mission	16	21.9%
Bayview	18	24.7%
Non-San Francisco and Unavailable	6	8.2%
Total	73	100.0%

Non-San Francisco and Unavailable	Count	%
Daly City	1	16.7%
Oakland	3	50.0%
Sacramento	1	16.7%
San Bruno	1	16.7%
Total	6	100.0%

Demographic Characteristics
Of Juvenile Hall Detainees on February 28th, 2013

Race/Ethnic Origin by Gender

Race/Ethnicity	Female	Male	Total	%
African American	4	31	35	47.9%
Filipino	1	2	3	4.1%
Hispanic	4	22	26	35.6%
Other Asian	0	1	1	1.4%
Other	0	1	1	1.4%
Samoan	2	2	4	5.5%
White	0	3	3	4.1%
Total	11	62	73	100.0%

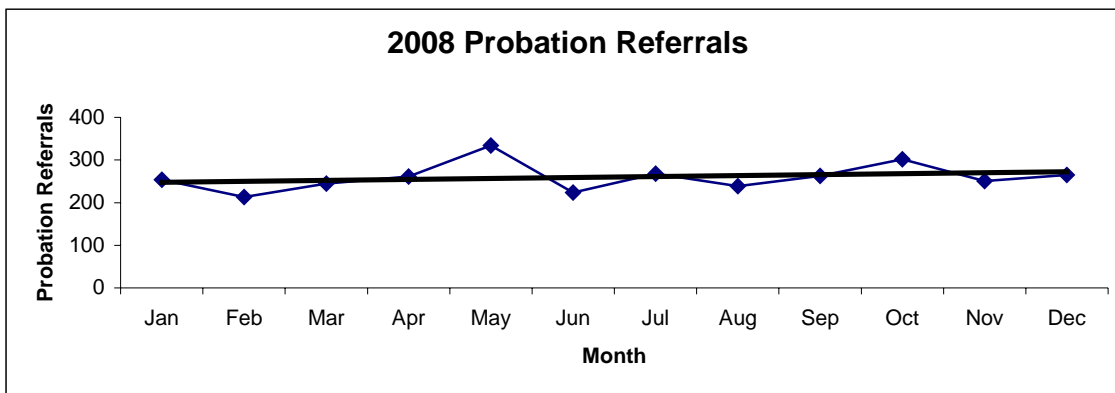


Section IV

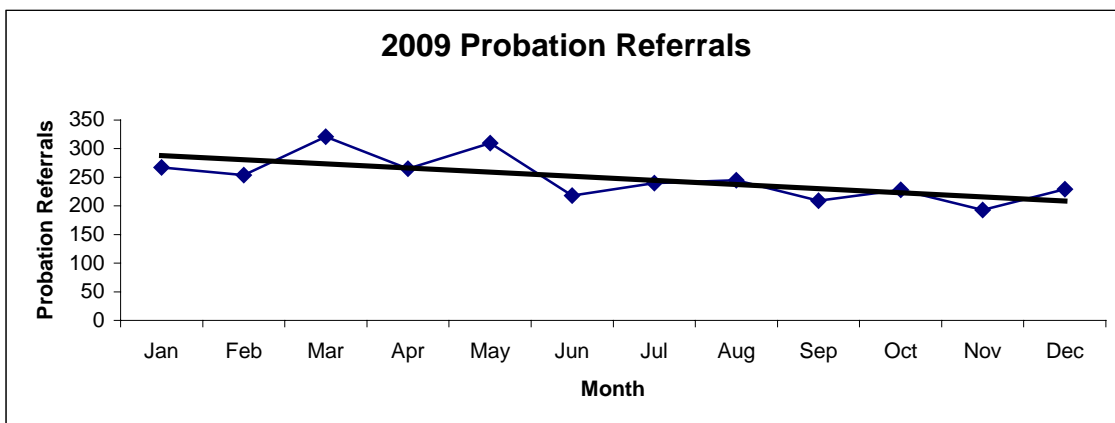
Historical Information

San Francisco Juvenile Probation Department
Probation Referrals (all sources) By Month
(2008-2010)

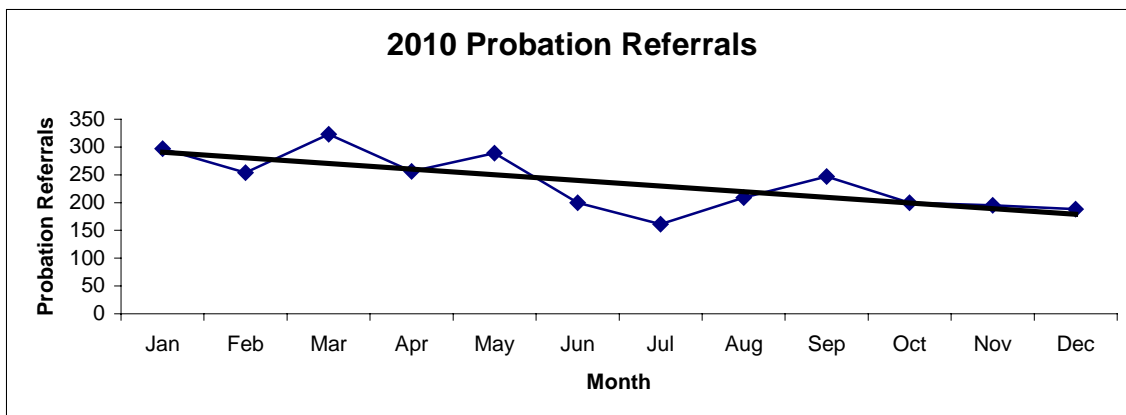
2008 Probation Referrals	Jan	Feb	Mar	Apr	May	Jun	Jul	Aug	Sep	Oct	Nov	Dec	Total
	254	213	245	261	334	224	268	239	263	302	251	265	3119



2009 Probation Referrals	Jan	Feb	Mar	Apr	May	Jun	Jul	Aug	Sep	Oct	Nov	Dec	Total
	267	254	321	265	310	218	240	245	209	228	193	229	2979

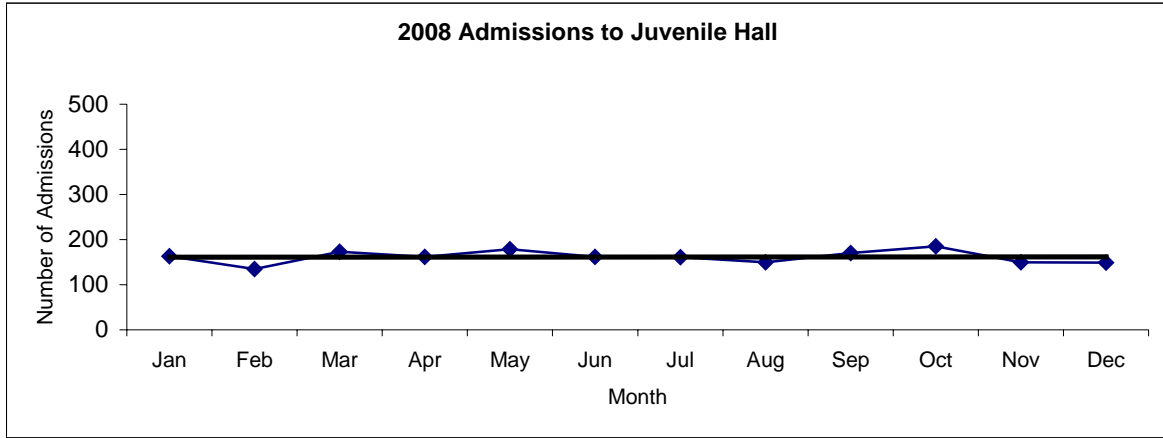


2010 Probation Referrals	Jan	Feb	Mar	Apr	May	Jun	Jul	Aug	Sep	Oct	Nov	Dec	Total
	297	254	323	256	289	200	161	209	247	200	195	188	2819

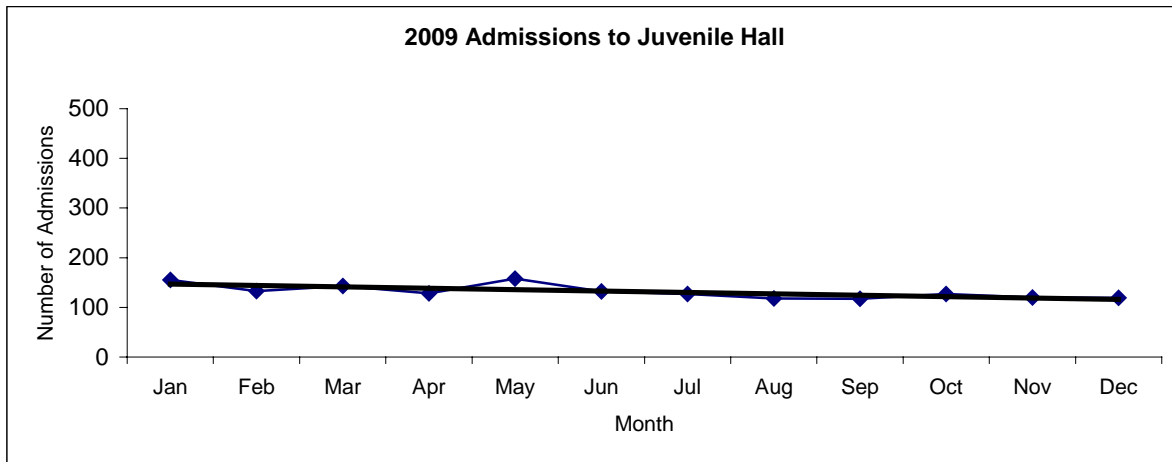


**San Francisco Juvenile Probation
Juvenile Hall Admissions By Month
(2008-2010)**

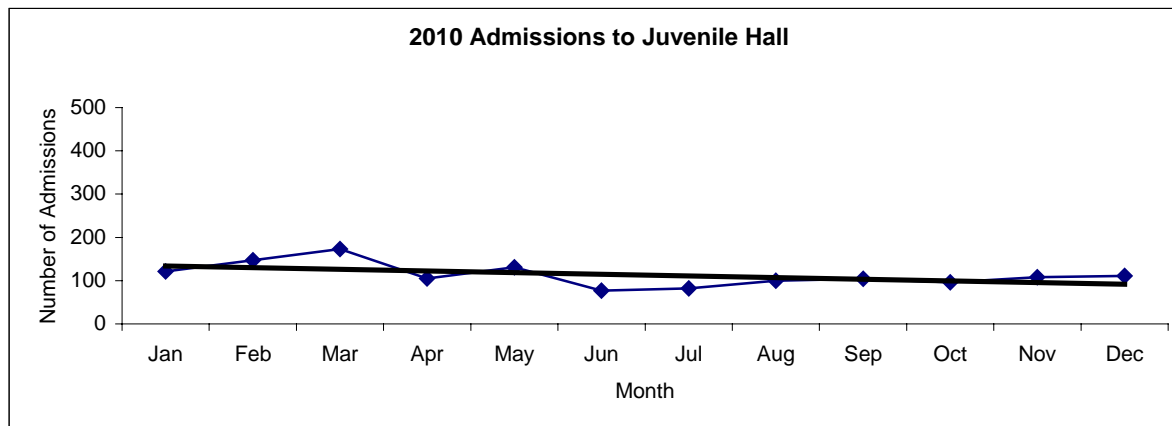
2008 Admissions	Jan	Feb	Mar	Apr	May	Jun	Jul	Aug	Sep	Oct	Nov	Dec	Total
	163	135	173	162	179	162	161	150	170	185	150	149	1939



2009 Admissions	Jan	Feb	Mar	Apr	May	Jun	Jul	Aug	Sep	Oct	Nov	Dec	Total
	155	133	143	128	158	132	127	118	117	127	120	119	1577

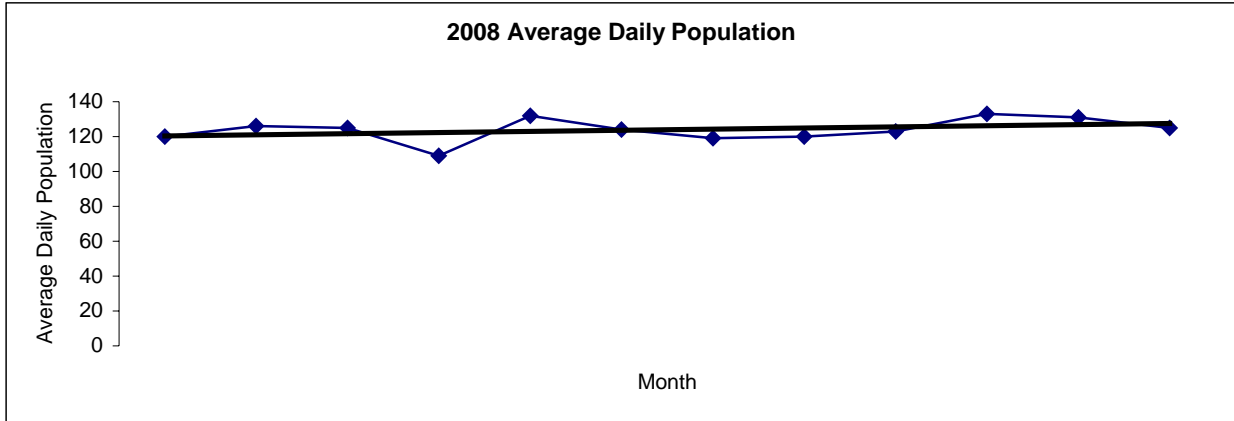


2010 Admissions	Jan	Feb	Mar	Apr	May	Jun	Jul	Aug	Sep	Oct	Nov	Dec	Total
	121	147	173	105	131	77	82	100	104	96	108	111	1355

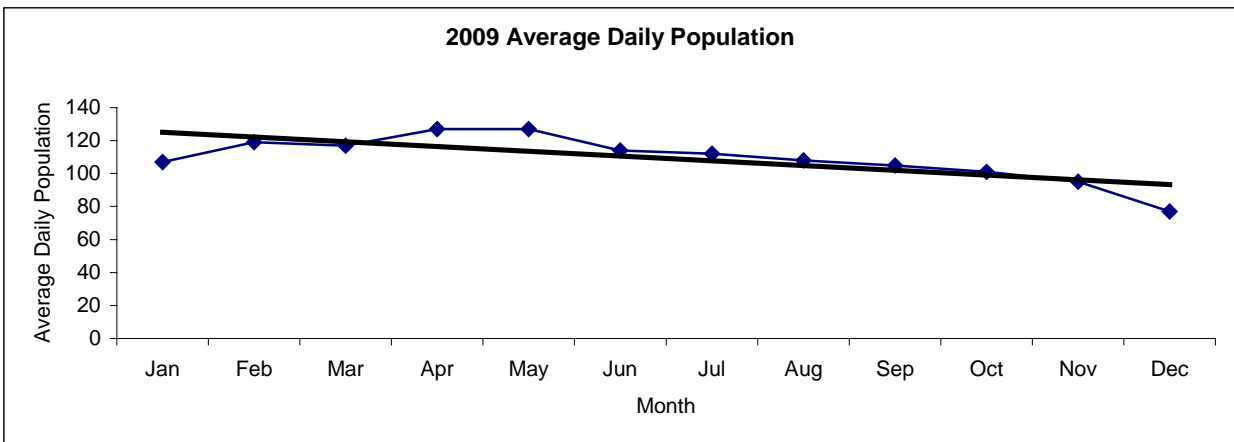


San Francisco Juvenile Probation
Juvenile Hall Average Daily Population By Month
 (2008-2010)

2008 Avg. Daily Pop.	Jan	Feb	Mar	Apr	May	Jun	Jul	Aug	Sep	Oct	Nov	Dec	Total
	120	126	125	109	132	124	119	120	123	133	131	125	124



2009 Avg. Daily Pop.	Jan	Feb	Mar	Apr	May	Jun	Jul	Aug	Sep	Oct	Nov	Dec	Total
	107	119	117	127	127	114	112	108	105	101	95	77	109



2010 Avg. Daily Pop.	Jan	Feb	Mar	Apr	May	Jun	Jul	Aug	Sep	Oct	Nov	Dec	Total
	85	104	110	107	99	97	90	88	90	84	79	92	94

