

City and County of San Francisco



Juvenile Probation Department

Monthly Report for January 2013

Presented to the Juvenile Probation Commission

February 13th, 2013

William P. Siffermann
Chief Probation Officer

Prepared by Jose Luis Perla
Information Technology Director
(415) 753-7686
jose.perla@sfgov.org

Table of Contents

Section I Summary Reports

Juvenile Hall, Log Cabin Ranch Summary Statistics	1
Probation Services Summary and California Youth Authority Statistics.....	2
Active Cases by Units.....	3

Section II Current Month General Detail

Probation Referrals, Juvenile Admissions And Average Daily Population	4
Juvenile Hall Admissions and Average Daily Population.....	5
Commitments to out-of-home placement	6
Commitments to California Youth Authority	7
Log Cabin Ranch Admissions and Average Daily Population.....	8
Probation Referrals	9
Juvenile Hall And Log Cabin Ranch Incident Report	10
Bay Area Resident Juvenile Hall Comparison	11
Juvenile Hall Admissions	12
Juvenile Hall Detainees by Detention Reason.....	13
Juvenile Hall Average Daily Population by Rated Capacity	14
Juvenile Hall Average Length of Stay	15

Section III Demographics

Juvenile Hall Detainees by Sex and Race/Ethnic Origin.....	16
Juvenile Hall Detainees by Age.....	17
Juvenile Hall Detainees by Age and Sex	18
Juvenile Hall Detainees by Geographic Residence of Youth.....	19
Juvenile Hall Detainees by Race/Ethnic Origin and Sex.....	20

Section IV
Historical Information

2004-2006 Probation Referrals21
2004-2006 Juvenile Hall Admissions22
2004-2006 Juvenile Hall Average Daily Population23



Section I

Summary Reports

Summary Report for the Month of January 2013

Juvenile Hall	<i>December 2011</i>	<i>December 2012</i>	<i>January 2012</i>	<i>January 2013</i>	<i>YTD 2012</i>	<i>YTD 2013</i>
Admissions	64	85	83	79	83	79
Average Daily Population	72	79	80	75	80	75
Average Length of Stay (Releases)	29.36	25.04	22.63	28.92	22.63	28.92
Average Length of Stay (In Custody)	64.48	60.06	69.65	63.07	69.65	63.07
Releases	64	79	81	87	81	87
Log Cabin Ranch						
Admissions:						
First Time Commitments	0	1	2	2	2	2
Recommitments	0	0	0	0	0	0
<i>Total</i>	0	1	2	2	2	2
Releases:						
Graduated	1	0	1	0	1	0
Escape	0	0	0	0	0	0
Other releases	3	4	3	0	3	0
<i>Total</i>	4	4	4	0	4	0
Average Daily Population	19	17	15	16	15	16

Summary Report for the Month of January 2013

Probation Services	<i>December 2012</i>	<i>January 2013</i>	<i>Year To Date 2013</i>
Probation Referrals	147	132	132
Total Petitions including violation of probation	73	67	67
Selected Court Dispositions:			
California Youth Authority	0	1	1
Log Cabin Ranch	2	2	2
Out of Home Placement	9	9	9
Ward Probation	22	10	10
Non-Ward Probation (725a WI)	0	3	3
Informal Probation (654 WI)	5	1	1
Violation of Probation Petitions Filed	9	6	6
California Youth Authority Monthly Count San Francisco County Juvenile Court Cases January 31st, 2013			
Category	Institutions	Parole	
Males			
White	0	0	
Hispanic	2	0	
African American	4	0	
Asian	1	0	
Native American	0	0	
Filipino	0	0	
Pacific Islander	0	0	
Other	0	0	
Total	7	0	
Females			
White	0	0	
Hispanic	0	0	
African American	0	0	
Asian	0	0	
Native American	0	0	
Filipino	0	0	
Pacific Islander	0	0	
Other	0	0	
Total	0	0	
Grand Total	7	0	

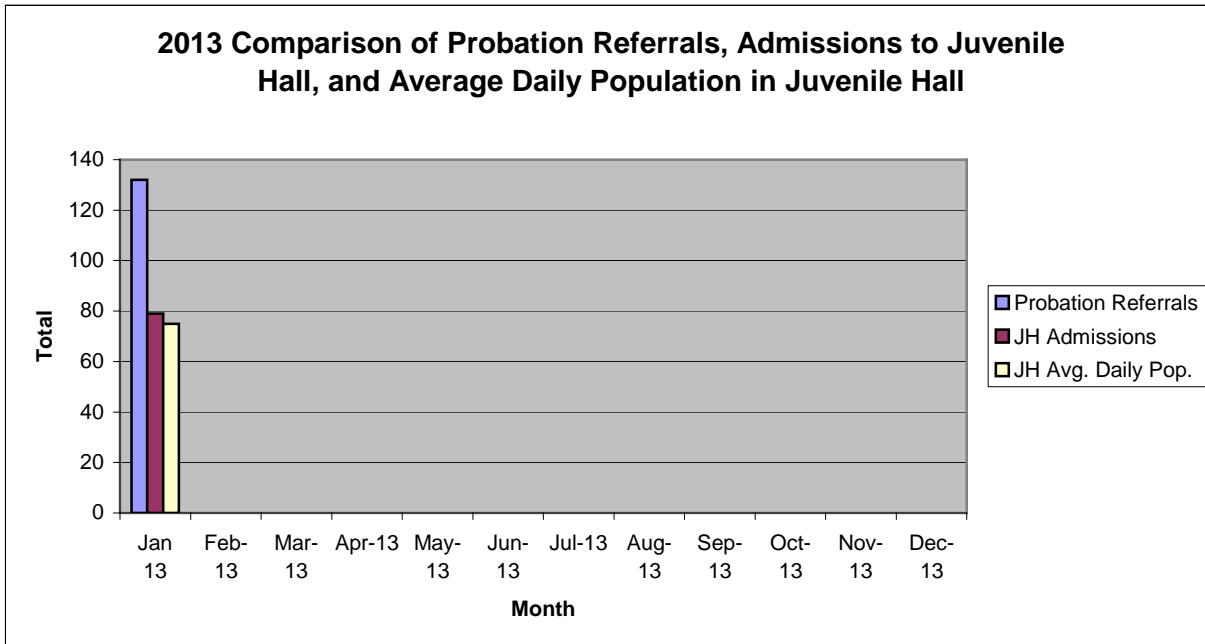
Summary Report for the Month of January 2013

Probation Services			
Active Cases by Units	December 2012	January 2013	January Average # Youth by PO
CARC	163	167	167
Intake Green (Custody Screening Investigation)	96	102	12
Intake Gold (Probation Services 1)	134	130	18
Family Integrated Treatment Services (FITS) PS2	136	135	13
Serious Offenders Program (Probation Services 3)	186	160	16
Out-of-home Placement (Probation Services 4)	169	144	18
<i>Total</i>	884	838	40
Total Active Intake Cases	408	413	
Total Probation/Supervision Cases	476	425	
<i>Total</i>	884	838	

Section II
Current Month
General Detail

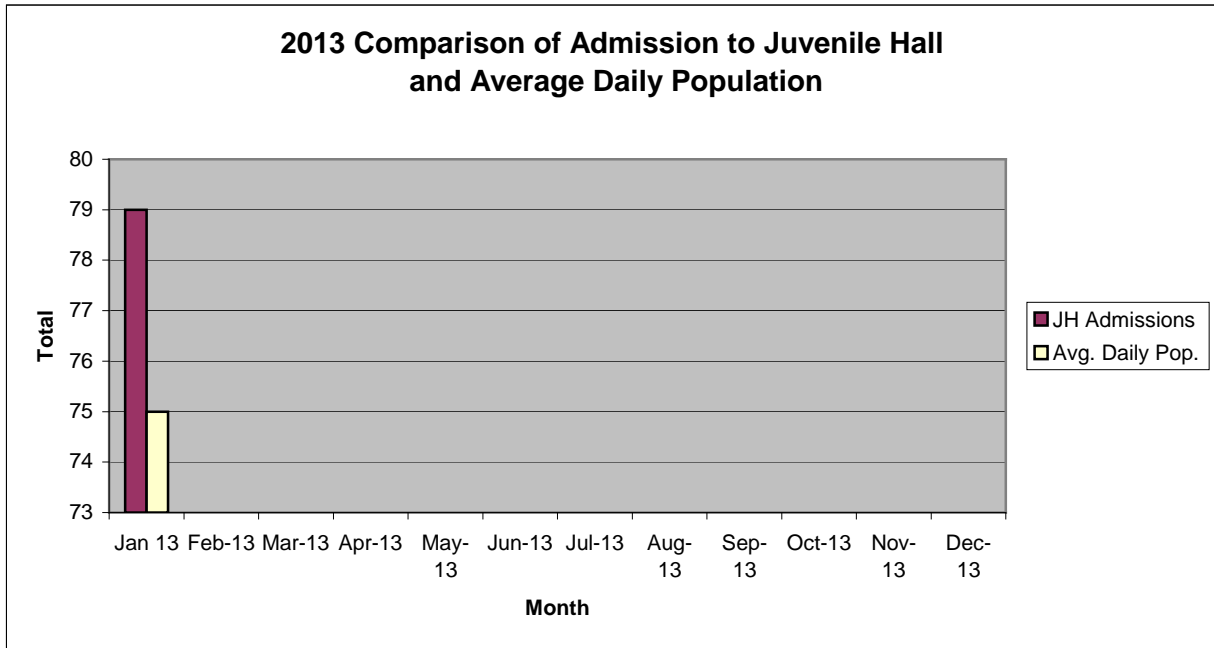
San Francisco Juvenile Probation Department

	Jan 13	Feb-13	Mar-13	Apr-13	May-13	Jun-13	Jul-13	Aug-13	Sep-13	Oct-13	Nov-13	Dec-13
Probation Referrals	132											
JH Admissions	79											
JH Avg. Daily Pop.	75											



San Francisco Juvenile Probation Department

	Jan 13	Feb-13	Mar-13	Apr-13	May-13	Jun-13	Jul-13	Aug-13	Sep-13	Oct-13	Nov-13	Dec-13
JH Admissions	79											
Avg. Daily Pop.	75											

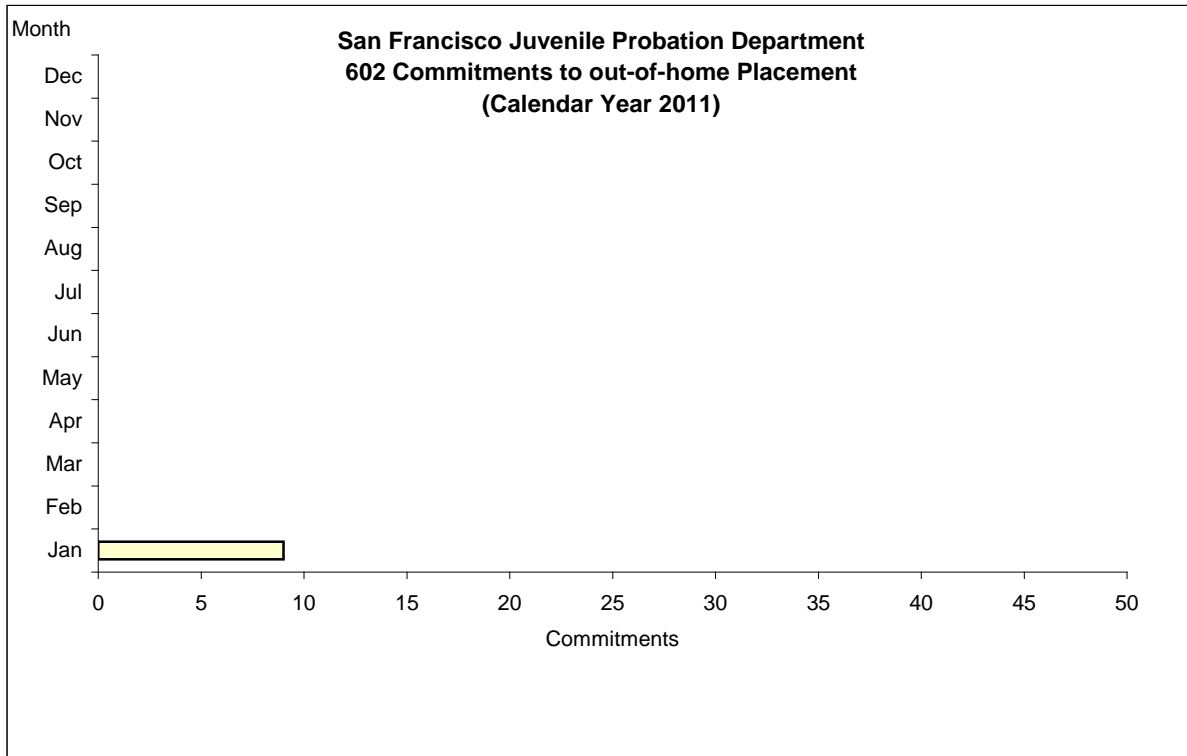


Out-of-Home Placement¹

Commitments of 602's

Calendar Year 2013

Commitments	Jan	Feb	Mar	Apr	May	Jun	Jul	Aug	Sep	Oct	Nov	Dec	Total
2013	9												9



¹ This report is based on 602 Commitments to out-of-home placements. If there is a 601 commitment, it will show as a footnote here. Figures are regularly updated to include reports from previous reporting periods.

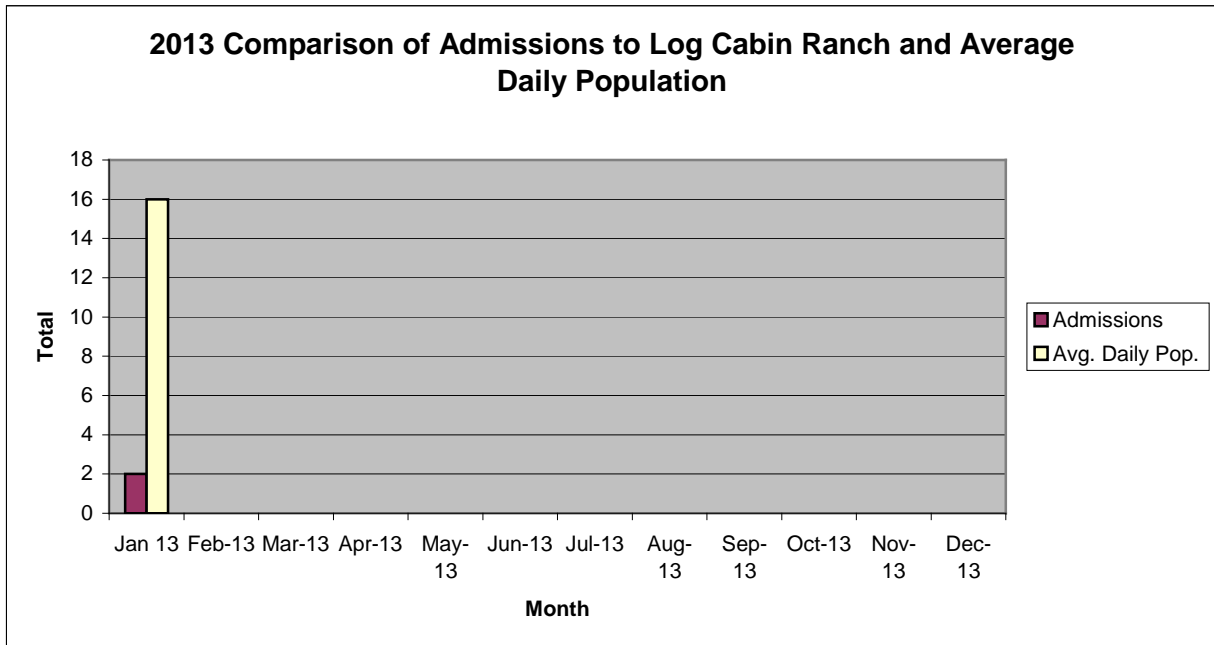
California Youth Authority
Commitments
(Calendar Year 2013)

Commitments	Jan	Feb	Mar	Apr	May	Jun	Jul	Aug	Sep	Oct	Nov	Dec	Total
2013	1												1



San Francisco Juvenile Probation Department

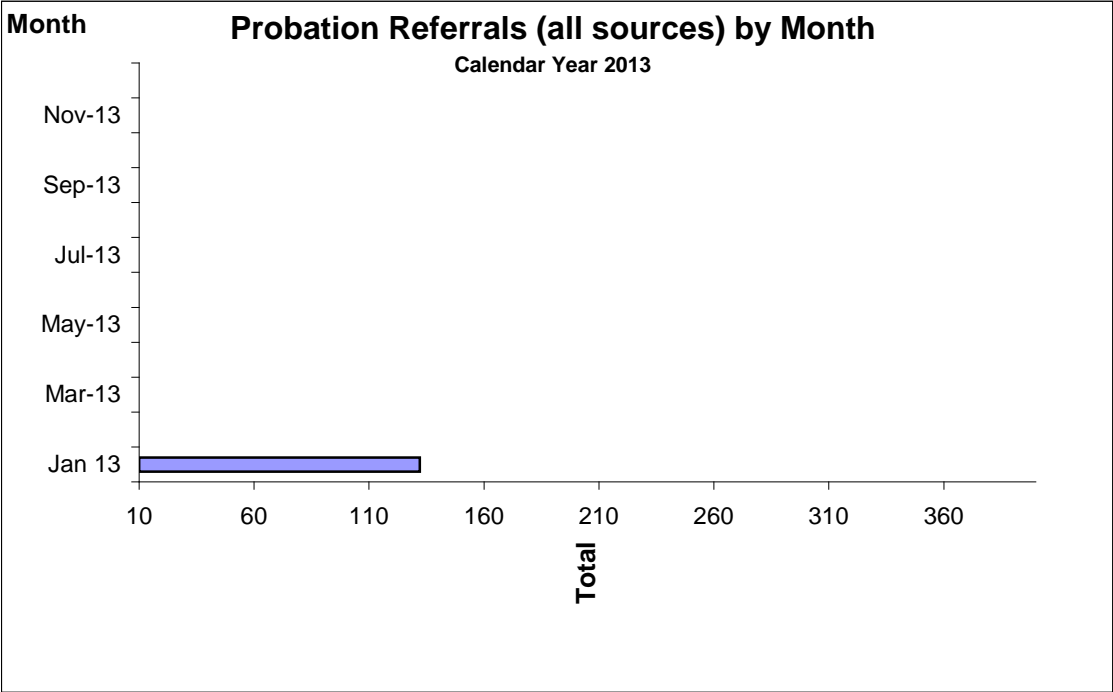
	Jan 13	Feb-13	Mar-13	Apr-13	May-13	Jun-13	Jul-13	Aug-13	Sep-13	Oct-13	Nov-13	Dec-13
Admissions	2											
Avg. Daily Pop.	16											



Probation Referrals by Month Calendar Year 2013

Probation Referrals (all sources) by Month (602 W&I)

Jan 13	132
Feb-13	
Mar-13	
Apr-13	
May-13	
Jun-13	
Jul-13	
Aug-13	
Sep-13	
Oct-13	
Nov-13	
Dec-13	

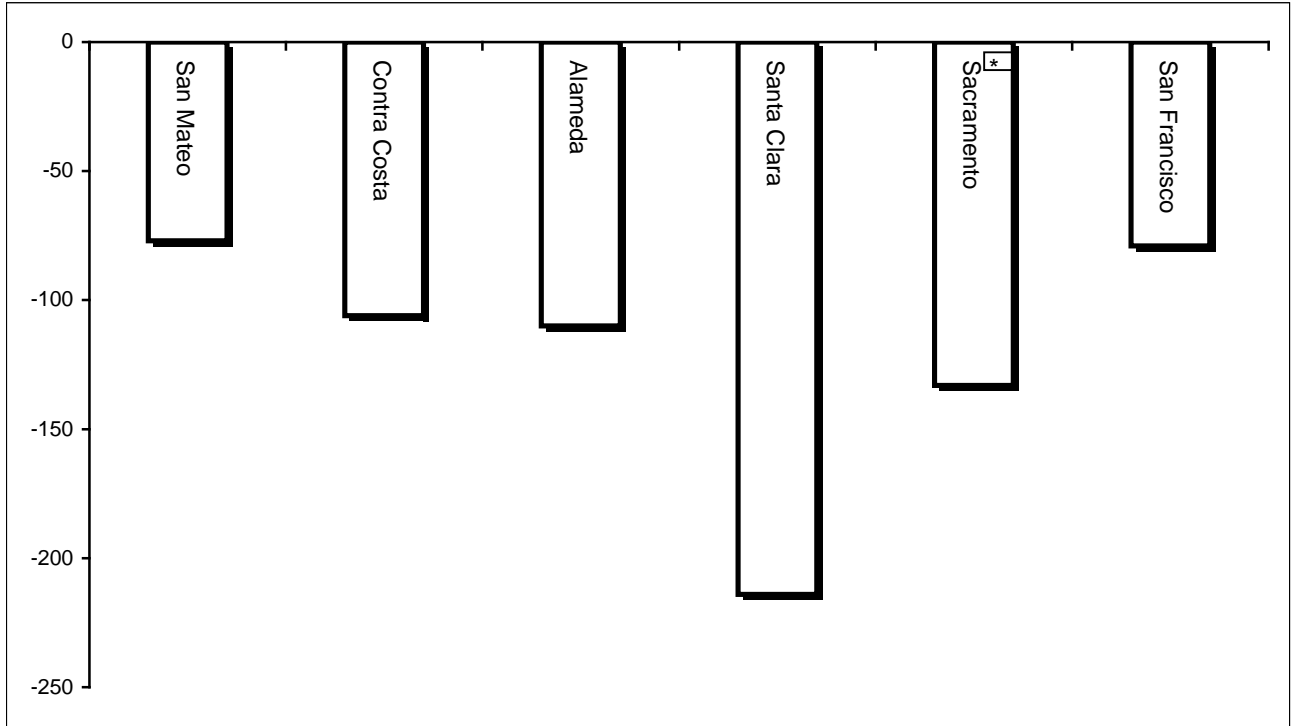


San Francisco Juvenile Probation Department
 Monthly Incident Report Form
 January 2013

Juvenile Hall	Battery on Staff	Injury to Staff Due to Restrain of Minor	Fights Minor on Minor	Battery Youth on Youth	Attempted Escape	AWOL	Attempted Suicide	Serious Contraband (Weapon illegal drug)	Use of Force	Self Inflicted Injuries
	0	2	0	14	0	0	1	24	0	0
	Assaults Minor on Minor	Battery on Staff with Injury	Fire	Fight with Injury	Battery Youth on Youth with Injury	Escape	Death	Suicide	Major Property Destruction	Use of Restraints (Handcuffs/ Shackles)
0	0	0	0	0	0	0	0	0	0	12
Log Cabin Ranch	Battery on Staff	Injury to Staff due to Restraint of Minor	Fight	Battery Youth on Youth	Attempted Escape	AWOL	Attempted Suicide	Serious Contraband	Battery on Staff with Injury	Fire
	0	0	0	0	0	0	0	0	0	0
	Fight With Injury	Battery Youth on Youth with Injury	Escape	Death	Suicide	Major Property Destruction				
0	0	0	0	0	0	0				

Bay Area Resident Juvenile Hall Comparison Over/Under Capacity

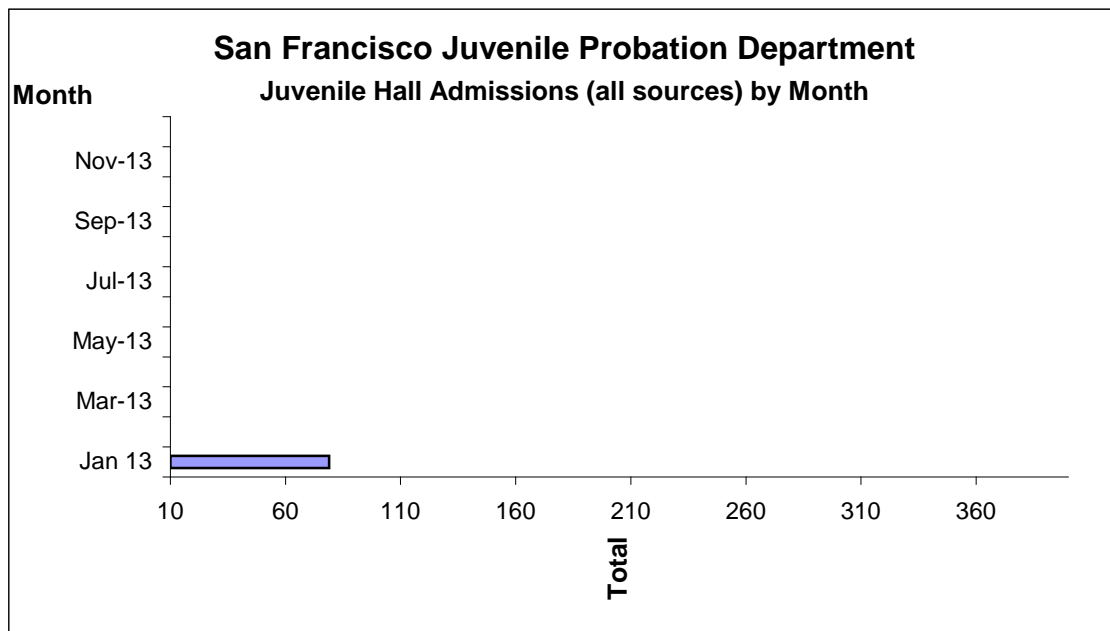
February 1st, 2013



	Rated Capacity	Actual	Over/Under Capacity
San Mateo	180	103	-77
Contra Costa	240	134	-106
Alameda	280	170	-110
Santa Clara	360	146	-214
Sacramento	308	175	-133
San Francisco	150	71	-79

Juvenile Hall Admissions by Month Calendar Year 2013

Jan 13	79
Feb-13	
Mar-13	
Apr-13	
May-13	
Jun-13	
Jul-13	
Aug-13	
Sep-13	
Oct-13	
Nov-13	
Dec-13	

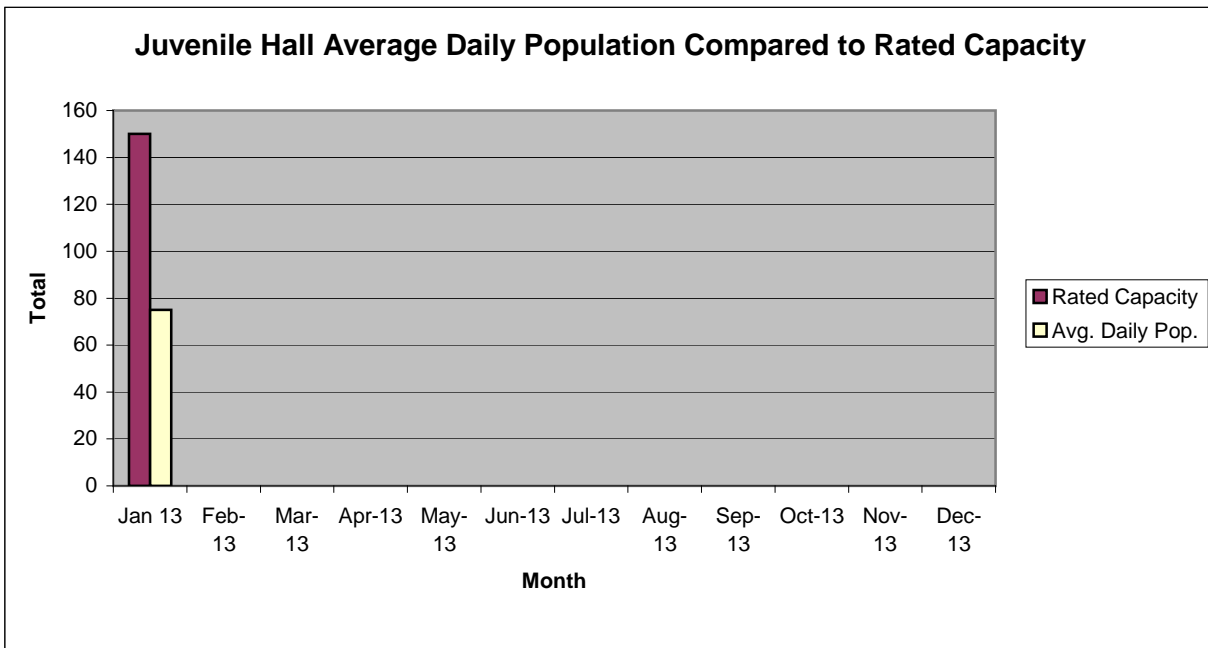


Characteristics of Juvenile Hall Detainees on January 31st, 2013

Detention Reason	Referral Reason	MF*	Count	%
MURDER	187 (A) PC	F	1	1.33%
KIDNAPPING FOR RANSOM	209 (A) PC	F	1	1.33%
ATTEMPTED MURDER	664 /187 (A) PC	F	6	8.00%
ORAL COPULATION IN CONCERT BY THREAT OF RETALIATION	288 A(D)(2) PC	F	1	1.33%
RAPE BY FORCE/FEAR/ETC	261 (A)(2) PC	F	2	2.67%
SEXUAL PENETRATION W/FORCE/FEAR/ETC	289 (A)(1)(A) PC	F	1	1.33%
ROBBERY	211 PC	F	14	18.67%
BURGLARY	459 PC	F	2	2.67%
ASSAULT:DEADLY WEAPON OR FORCE:POSSIBLE GREAT BODILY INJ	245 (A) PC	F	1	1.33%
FORCE OR ADW NOT FIREARM:GBI LIKELY	245 (A)(1) PC	F	3	4.00%
BATTERY ON CUSTODIAL OFFICER	243.1 PC	F	1	1.33%
ALTER/REMOVE/ETC IDENTIFICATION MARKS ON FIREARM	23900 PC	F	1	1.33%
CARRY CONCEALED WEAPON PROHIBITED CLASS/UNLAWFUL POSSESSION	25400 (C)(4) PC	F	2	2.67%
ARSON:PROPERTY	451 (D) PC	F	1	1.33%
THREATEN CRIME W/INTENT TO TERRORIZE	422 PC	F	4	5.33%
GRAND THEFT FROM PERSON	487 (C) PC	F	1	1.33%
RECEIVE/ETC KNOWN STOLEN PROPERTY	496 (A) PC	F	1	1.33%
MFG/IMPORT/ETC SHORT BARRELED RIFLE	33215 PC	F	1	1.33%
VANDALISM (\$400 OR MORE)	594 (B)(1) PC	F	2	2.67%
OBSTRUCT/RESIST/ETC PUBLIC/PEACE OFFICER/EMERGENCY MED TECH	148 (A)(1) PC	M	1	1.33%
LOITER:INTENT:PROSTITUTION	653.22 (A) PC	M	1	1.33%
ENTER/ETC NONCOMMERCIAL DWELLING	602.5(A) PC	M	1	1.33%
FAIL TO OBEY ORDER OF JUVENILE COURT:602 WI	777 (A)(2) WI	M	5	6.67%
CHANGE OF PLACEMENT/PLACEMENT FAILURE	737 WI	M	3	4.00%
VIOLATION(S) OF HOME SUPERVISION CONDITION	628.1 WI	M	4	5.33%
BENCH WARRANT	BENCH WARRANT		3	4.00%
ARREST WARRANT	WRNT602		8	10.67%
COURT ORDER	CTORD 602		3	4.00%
<i>F-Felony; M=Misdemeanor</i>		Total	75	100.00%

San Francisco Juvenile Probation Department

	Jan 13	Feb-13	Mar-13	Apr-13	May-13	Jun-13	Jul-13	Aug-13	Sep-13	Oct-13	Nov-13	Dec-13
Rated Capacity	150											
Avg. Daily Pop.	75											



Juvenile Hall Average Length of Stay

For the Month of January 2013

¹Released

Range of Days	<i>1-10 days</i>	<i>11-20 days</i>	<i>21-30 days</i>	<i>30 or more days</i>	Total
# of Youth Released	39	10	8	30	87
% of Population	44.83%	11.49%	9.20%	34.48%	100%
# of Days	141	135	213	2,027	2,516
% of Total Days	5.60%	5.37%	8.47%	80.56%	100%
Average Length of Stay	3.62	13.50	26.63	67.57	28.92

²In Custody

Range of Days	<i>1-10 days</i>	<i>11-20 days</i>	<i>21-30 days</i>	<i>30 or more days</i>	Total
# of Youth Detained	20	14	5	36	75
% of Population	26.67%	18.67%	6.67%	48.00%	100%
# of Days	107	219	120	4,284	4,730
% of Total Days	2.26%	4.63%	2.54%	90.57%	100%
Average Length of Stay	5.35	15.64	24.00	119.00	63.07

Notes: Less than one day of stay is calculated as one day.

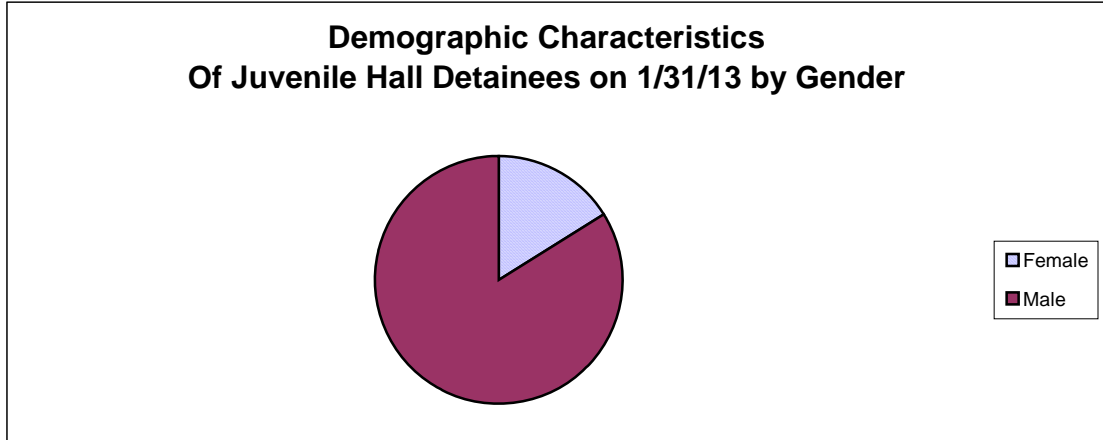
¹Length of stay is calculated according to release date for those who are released.

²For those still in custody, length of stay is calculated at the last day of the month.

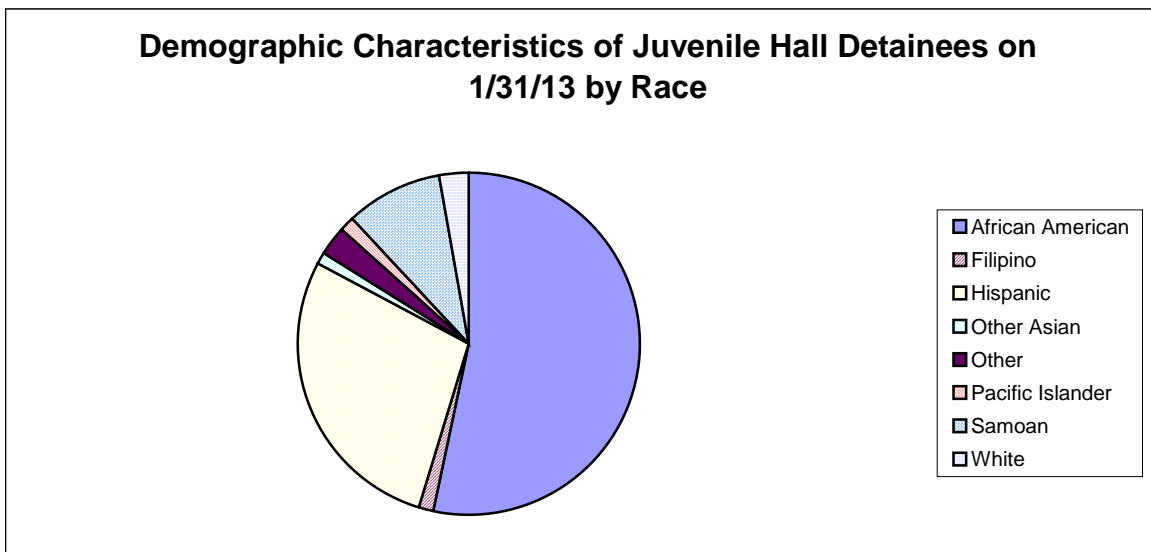
Section III

Demographics

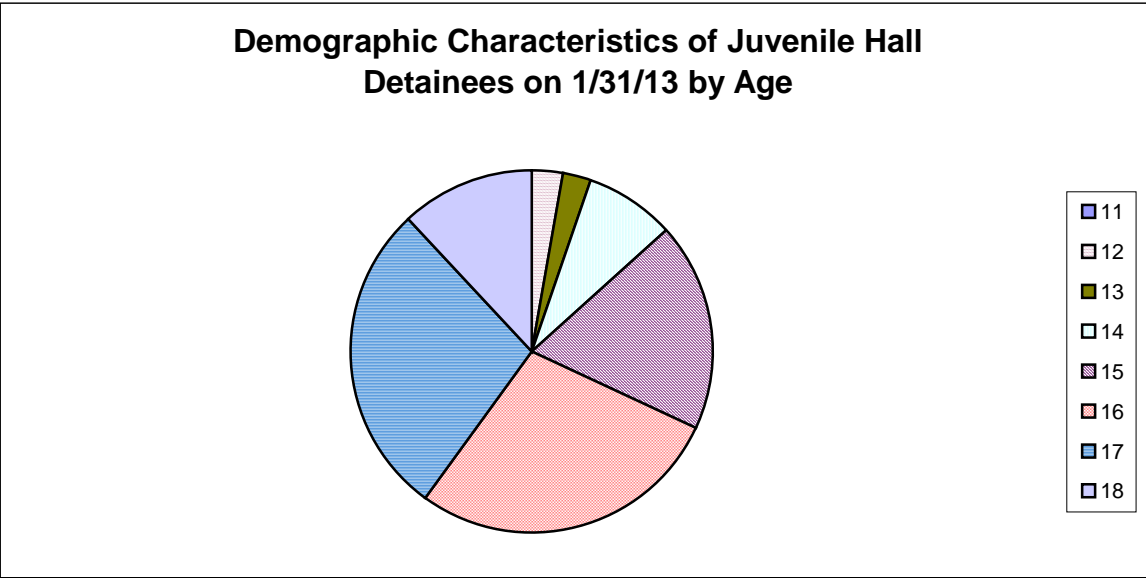
Gender	Frequency	Percent
Female	12	16.00%
Male	63	84.00%
Total	75	100.00%



Race/Ethnic Origin	Frequency	Percent
African American	40	53.33%
Filipino	1	1.33%
Hispanic	21	28.00%
Other Asian	1	1.33%
Other	2	2.67%
Pacific Islander	1	1.33%
Samoan	7	9.33%
White	2	2.67%
Total	75	100.00%

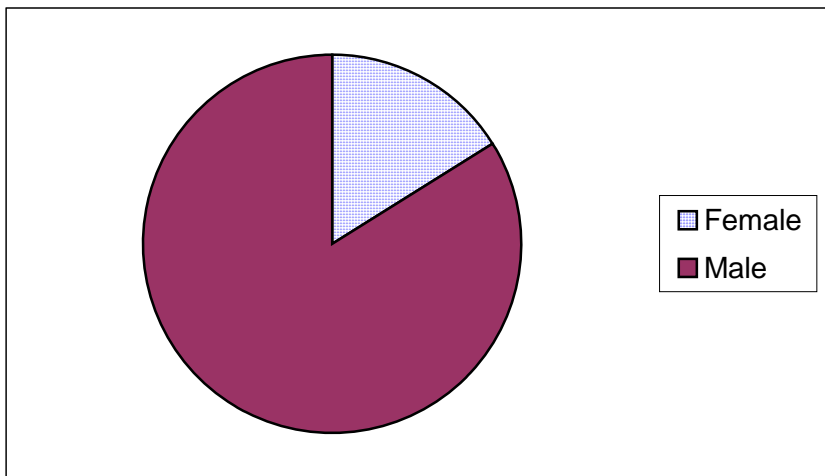


Age	Frequency	Percent
11	0	0.00%
12	2	2.67%
13	2	2.67%
14	6	8.00%
15	14	18.67%
16	21	28.00%
17	21	28.00%
18	9	12.00%
Total	75	100.00%



Demographic Characteristics of Juvenile Hall Detainees
on 1/31/2013
Age by Gender

Age	Female	Male	Total	
11	0	0	0	0.00%
12	0	2	2	2.67%
13	2	0	2	2.67%
14	1	5	6	8.00%
15	2	12	14	18.67%
16	3	18	21	28.00%
17	2	19	21	28.00%
18 and over	2	7	9	12.00%
Total	12	63	75	100.00%
	16.00%	84.00%	100.00%	



Demographic Characteristics
Of Juvenile Hall Detainees on January 31st, 2013

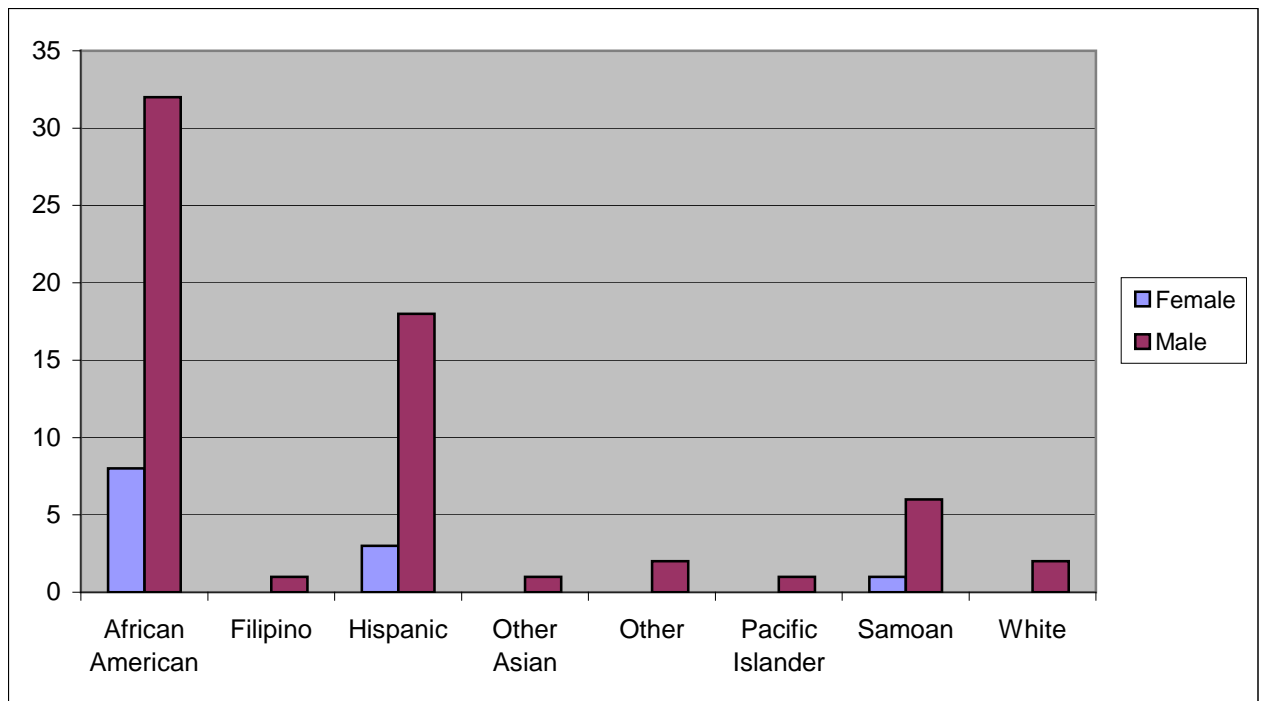
Geographic Residence of Youth	Count	%
Richmond	2	2.7%
Marina	0	0.0%
North of Market/Downtown	3	4.0%
Treasure Island/Yerba Buena Island	0	0.0%
Western Addition	11	14.7%
South of Market/Tenderloin	1	1.3%
Sunset	1	1.3%
Haight Ashbury/Castro/Upper Market	3	4.0%
Inner Mission	5	6.7%
Potrero	2	2.7%
Parkside	1	1.3%
Ingleside (West of Twin Peaks)	6	8.0%
Outer Mission	17	22.7%
Bayview	13	17.3%
Non-San Francisco and Unavailable	10	13.3%
Total	75	100.0%

Non-San Francisco and Unavailable	Count	%
Brisbane	1	10.0%
Daily City	1	10.0%
Modesto	1	10.0%
Oakland	5	50.0%
Stockton	1	10.0%
Unavailable	1	10.0%
Total	10	100.0%

Demographic Characteristics
Of Juvenile Hall Detainees on January 31st, 2013

Race/Ethnic Origin by Gender

Race/Ethnicity	Female	Male	Total	%
African American	8	32	40	53.3%
Filipino	0	1	1	1.3%
Hispanic	3	18	21	28.0%
Other Asian	0	1	1	1.3%
Other	0	2	2	2.7%
Pacific Islander	0	1	1	1.3%
Samoan	1	6	7	9.3%
White	0	2	2	2.7%
Total	12	63	75	100.0%

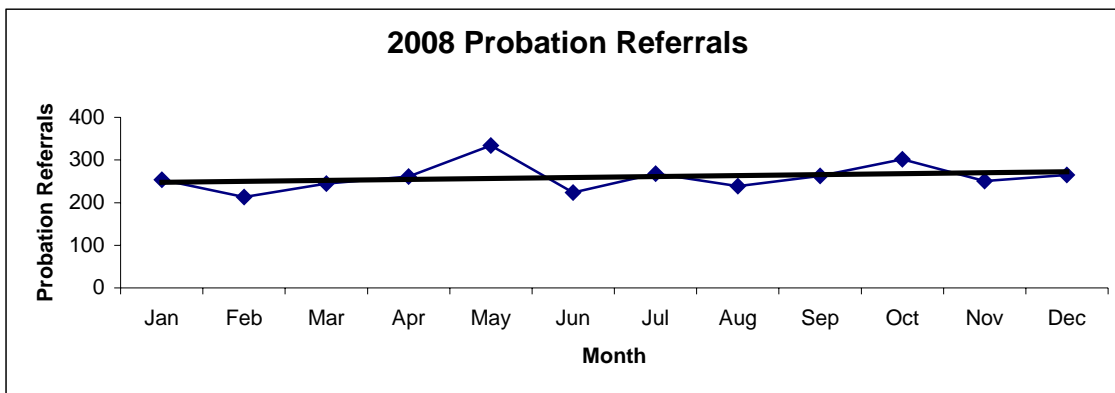


Section IV

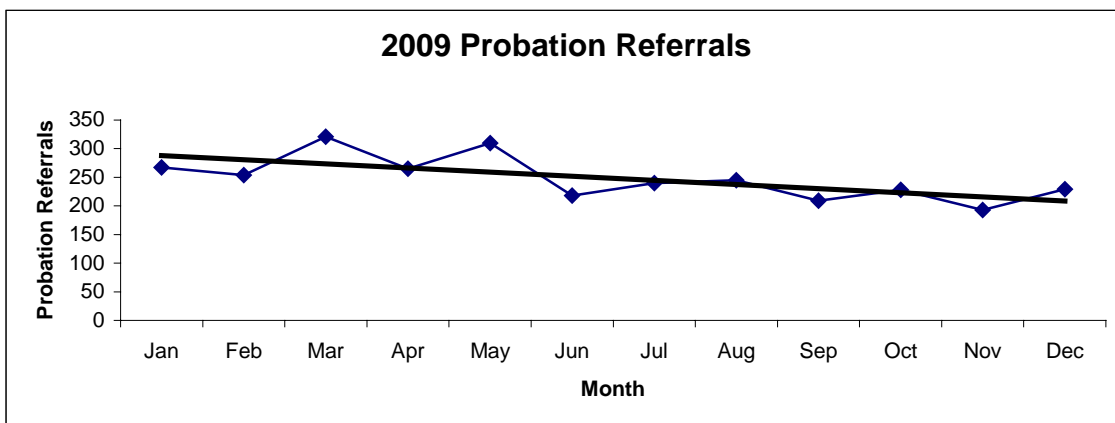
Historical Information

San Francisco Juvenile Probation Department
Probation Referrals (all sources) By Month
(2008-2010)

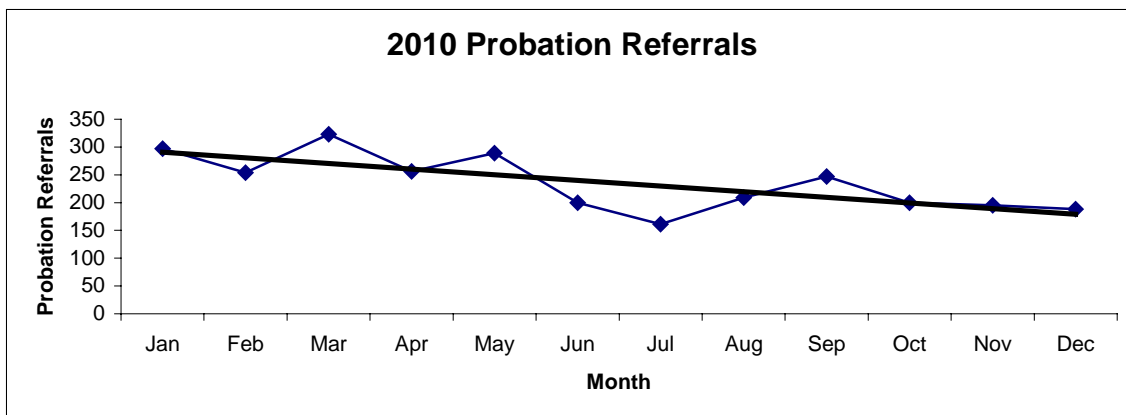
2008 Probation Referrals	Jan	Feb	Mar	Apr	May	Jun	Jul	Aug	Sep	Oct	Nov	Dec	Total
	254	213	245	261	334	224	268	239	263	302	251	265	3119



2009 Probation Referrals	Jan	Feb	Mar	Apr	May	Jun	Jul	Aug	Sep	Oct	Nov	Dec	Total
	267	254	321	265	310	218	240	245	209	228	193	229	2979

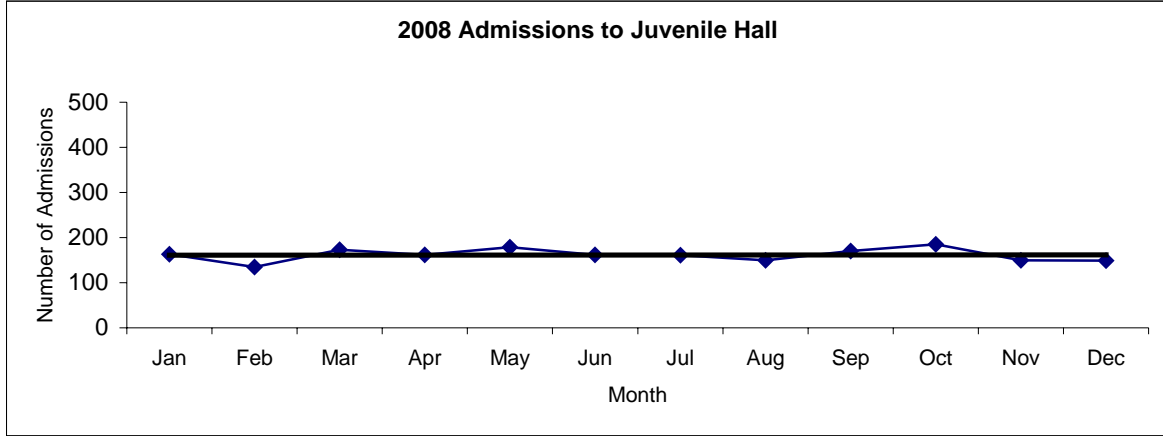


2010 Probation Referrals	Jan	Feb	Mar	Apr	May	Jun	Jul	Aug	Sep	Oct	Nov	Dec	Total
	297	254	323	256	289	200	161	209	247	200	195	188	2819

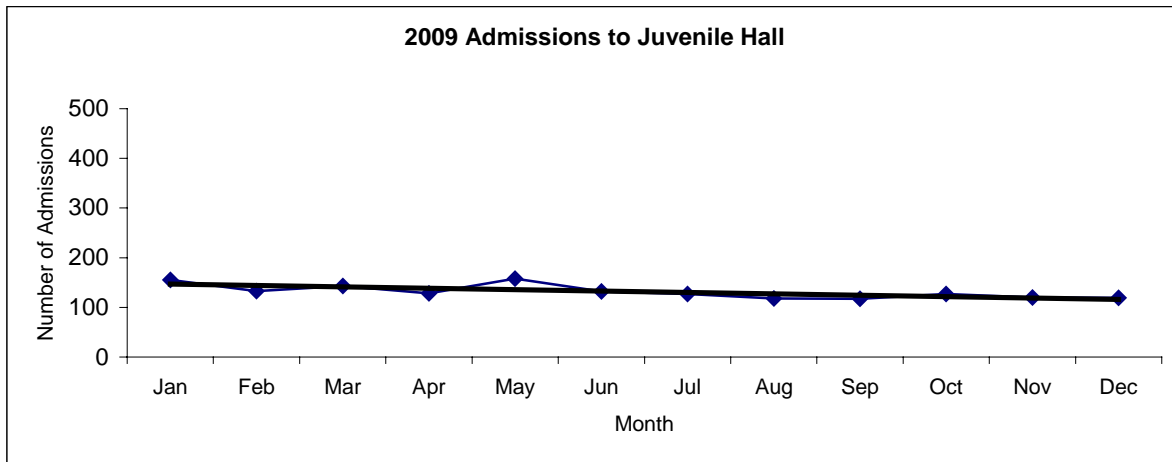


**San Francisco Juvenile Probation
Juvenile Hall Admissions By Month
(2008-2010)**

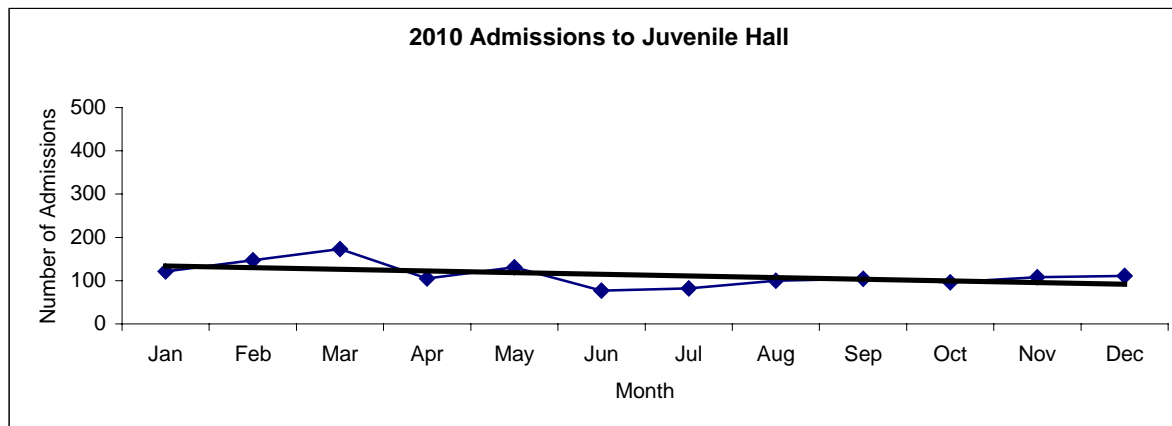
2008 Admissions	Jan	Feb	Mar	Apr	May	Jun	Jul	Aug	Sep	Oct	Nov	Dec	Total
	163	135	173	162	179	162	161	150	170	185	150	149	1939



2009 Admissions	Jan	Feb	Mar	Apr	May	Jun	Jul	Aug	Sep	Oct	Nov	Dec	Total
	155	133	143	128	158	132	127	118	117	127	120	119	1577

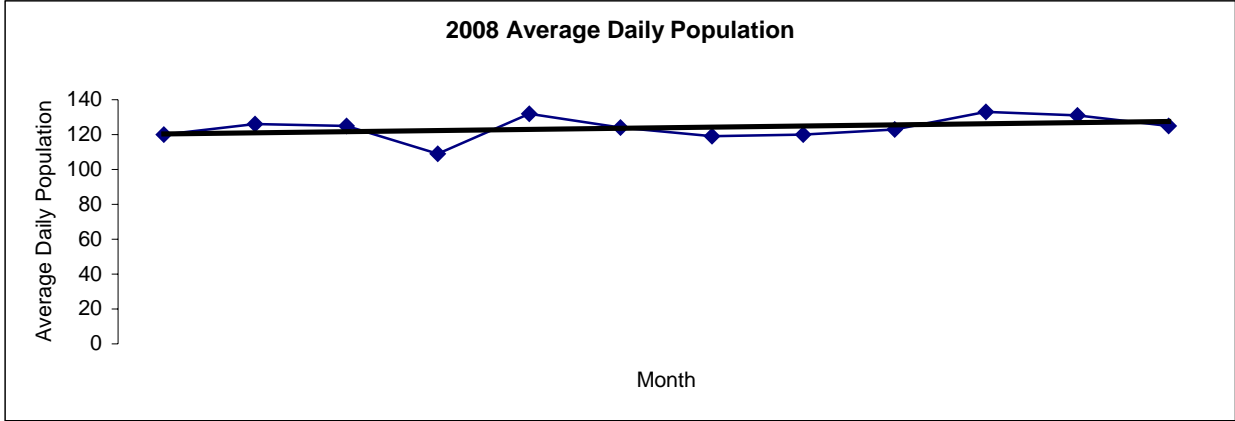


2010 Admissions	Jan	Feb	Mar	Apr	May	Jun	Jul	Aug	Sep	Oct	Nov	Dec	Total
	121	147	173	105	131	77	82	100	104	96	108	111	1355

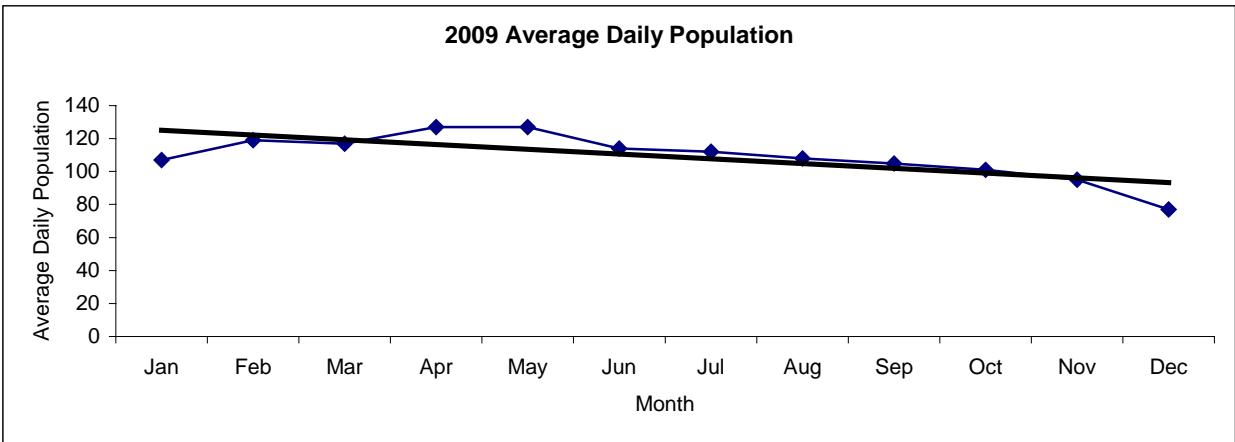


San Francisco Juvenile Probation
Juvenile Hall Average Daily Population By Month
 (2008-2010)

2008 Avg. Daily Pop.	Jan	Feb	Mar	Apr	May	Jun	Jul	Aug	Sep	Oct	Nov	Dec	Total
	120	126	125	109	132	124	119	120	123	133	131	125	124



2009 Avg. Daily Pop.	Jan	Feb	Mar	Apr	May	Jun	Jul	Aug	Sep	Oct	Nov	Dec	Total
	107	119	117	127	127	114	112	108	105	101	95	77	109



2010 Avg. Daily Pop.	Jan	Feb	Mar	Apr	May	Jun	Jul	Aug	Sep	Oct	Nov	Dec	Total
	85	104	110	107	99	97	90	88	90	84	79	92	94

