

# City and County of San Francisco



Juvenile Probation Department

---

## Monthly Report for March 2013

Presented to the Juvenile Probation Commission

April 10<sup>th</sup>, 2013

William P. Siffermann  
Chief Probation Officer

Prepared by Jose Luis Perla  
Information Technology Director  
(415) 753-7686  
[jose.perla@sfgov.org](mailto:jose.perla@sfgov.org)

# Table of Contents

---

## **Section I Summary Reports**

Juvenile Hall, Log Cabin Ranch Summary Statistics .....	1
Probation Services Summary and California Youth Authority Statistics .....	2
Active Cases by Units .....	3

## **Section II Current Month General Detail**

Probation Referrals, Juvenile Admissions And Average Daily Population .....	4
Juvenile Hall Admissions and Average Daily Population .....	5
Commitments to out-of-home placement .....	6
Commitments to California Youth Authority .....	7
Log Cabin Ranch Admissions and Average Daily Population .....	8
Probation Referrals .....	9
Juvenile Hall And Log Cabin Ranch Incident Report .....	10
Bay Area Resident Juvenile Hall Comparison .....	11
Juvenile Hall Admissions .....	12
Juvenile Hall Detainees by Detention Reason .....	13
Juvenile Hall Average Daily Population by Rated Capacity .....	14
Juvenile Hall Average Length of Stay .....	15

## **Section III Demographics**

Juvenile Hall Detainees by Sex and Race/Ethnic Origin .....	16
Juvenile Hall Detainees by Age .....	17
Juvenile Hall Detainees by Age and Sex .....	18
Juvenile Hall Detainees by Geographic Residence of Youth .....	19
Juvenile Hall Detainees by Race/Ethnic Origin and Sex .....	20

## **Section IV**

### **Historical Information**

2004-2006 Probation Referrals .....	21
2004-2006 Juvenile Hall Admissions .....	22
2004-2006 Juvenile Hall Average Daily Population .....	23

---

# **Section I**

## **Summary Reports**

## Summary Report for the Month of March 2013

<b>Juvenile Hall</b>	<i>February 2012</i>	<i>February 2013</i>	<i>March 2012</i>	<i>March 2013</i>	<i>YTD 2012</i>	<i>YTD 2013</i>
Admissions	61	67	78	87	222	233
Average Daily Population	75	75	66	77	74	76
Average Length of Stay (Releases)	38.44	20.10	23.05	31.39	28.04	25.69
Average Length of Stay (In Custody)	76.91	72.11	68.25	65.51	71.60	68.93
Releases	82	67	63	83	226	380
<b>Log Cabin Ranch</b>						
Admissions:						
First Time Commitments	6	1	1	0	9	3
Recommitments	0	0	0	0	0	0
<i>Total</i>	<b>6</b>	<b>1</b>	<b>1</b>	<b>0</b>	<b>9</b>	<b>3</b>
Releases:						
Graduated	0	0	0	0	1	0
Escape	0	0	0	0	0	0
Other releases	2	0	3	4	8	4
<i>Total</i>	<b>2</b>	<b>0</b>	<b>3</b>	<b>4</b>	<b>9</b>	<b>4</b>
Average Daily Population	17	18	19	16	17	17

## Summary Report for the Month of March 2013

<b>Probation Services</b>	<i>February 2013</i>	<i>March 2013</i>	<i>Year To Date 2013</i>
Probation Referrals	142	167	441
Total Petitions including violation of probation	60	73	200
Selected Court Dispositions:			
California Youth Authority	1	0	2
Log Cabin Ranch	0	1	3
Out of Home Placement	11	9	29
Ward Probation	19	23	52
Non-Ward Probation (725a WI)	2	7	12
Informal Probation (654 WI)	5	10	16
Violation of Probation Petitions Filed	10	11	27
<b>California Youth Authority Monthly Count</b> <b>San Francisco County Juvenile Court Cases</b> March 31 <sup>st</sup> , 2013			
Category	Institutions	Parole	
<b>Males</b>			
White	0	0	
Hispanic	2	0	
African American	4	0	
Asian	1	0	
Native American	0	0	
Filipino	0	0	
Pacific Islander	0	0	
Other	0	0	
<b>Total</b>	<b>7</b>	<b>0</b>	
<b>Females</b>			
White	0	0	
Hispanic	0	0	
African American	0	0	
Asian	0	0	
Native American	0	0	
Filipino	0	0	
Pacific Islander	0	0	
Other	0	0	
<b>Total</b>	<b>0</b>	<b>0</b>	
<b>Grand Total</b>	<b>7</b>	<b>0</b>	

## Summary Report for the Month of March 2013

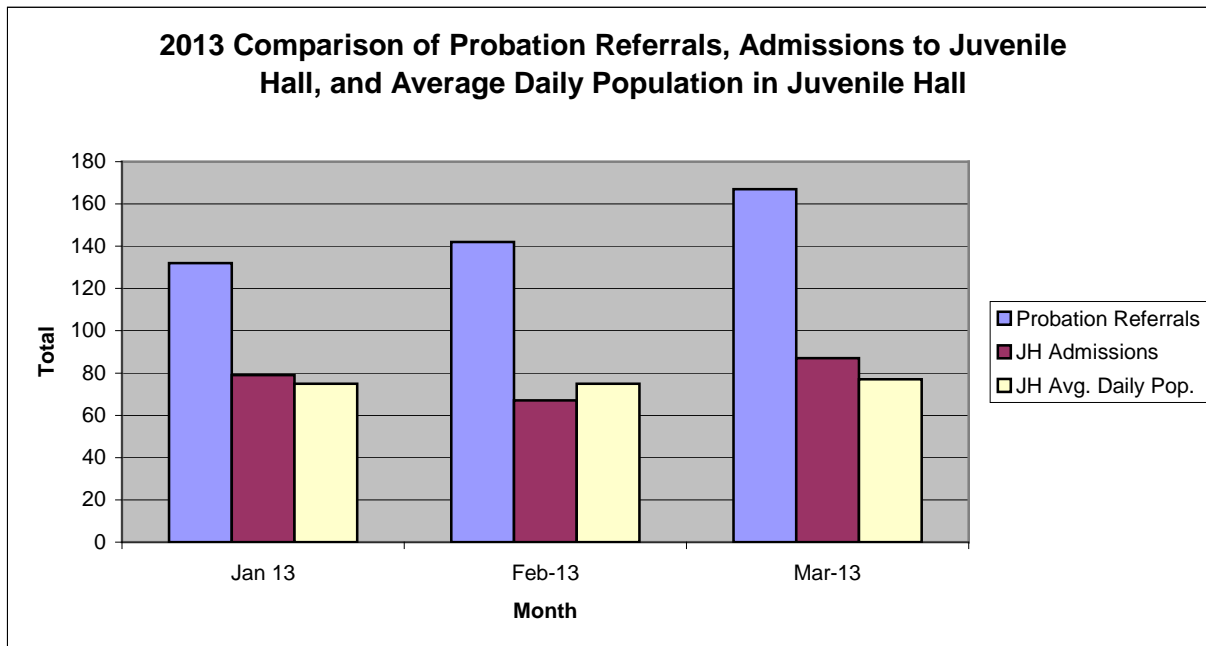
<b>Probation Services</b>			
<b>Active Cases by Units</b>	February 2013	March 2013	March Average # Youth by PO
CARC	174	164	164
Intake Green (Custody Screening Investigation)	102	102	15
Intake Gold (Probation Services 1)	140	153	22
Family Integrated Treatment Services (FITS) PS2	129	131	19
Serious Offenders Program (Probation Services 3)	159	155	22
Out-of-home Placement (Probation Services 4)	154	155	26
Juvenile Collaborative Re-entry Unit (JCRU)	0	29	10
<i>Total</i>	<b>858</b>	<b>889</b>	<b>40</b>
Total Active Intake Cases	431	432	
Total Probation/Supervision Cases	427	457	
<i>Total</i>	<b>858</b>	<b>889</b>	

**Section II**  
**Current Month**  
**General Detail**



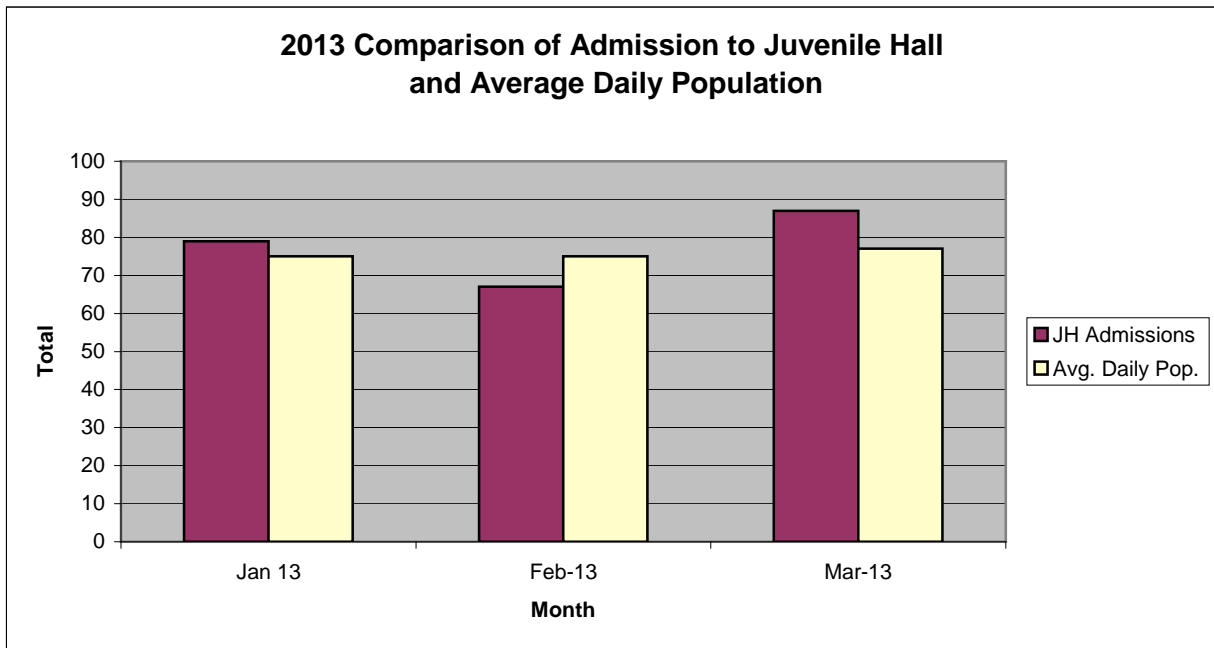
## San Francisco Juvenile Probation Department

	Jan 13	Feb-13	Mar-13	Apr-13	May-13	Jun-13	Jul-13	Aug-13	Sep-13	Oct-13	Nov-13	Dec-13
Probation Referrals	132	142	167									
JH Admissions	79	67	87									
JH Avg. Daily Pop.	75	75	77									



## San Francisco Juvenile Probation Department

	Jan 13	Feb-13	Mar-13	Apr-13	May-13	Jun-13	Jul-13	Aug-13	Sep-13	Oct-13	Nov-13	Dec-13
JH Admissions	79	67	87									
Avg. Daily Pop.	75	75	77									

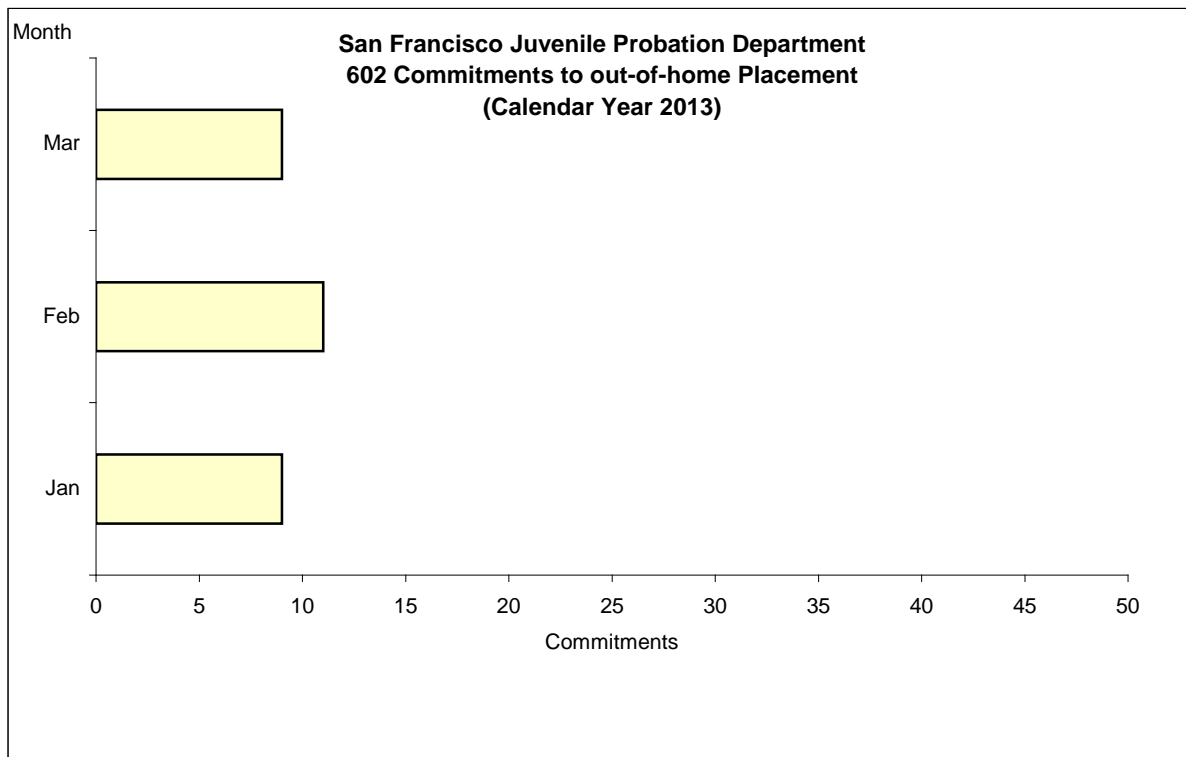


# Out-of-Home Placement<sup>1</sup>

## Commitments of 602's

### Calendar Year 2013

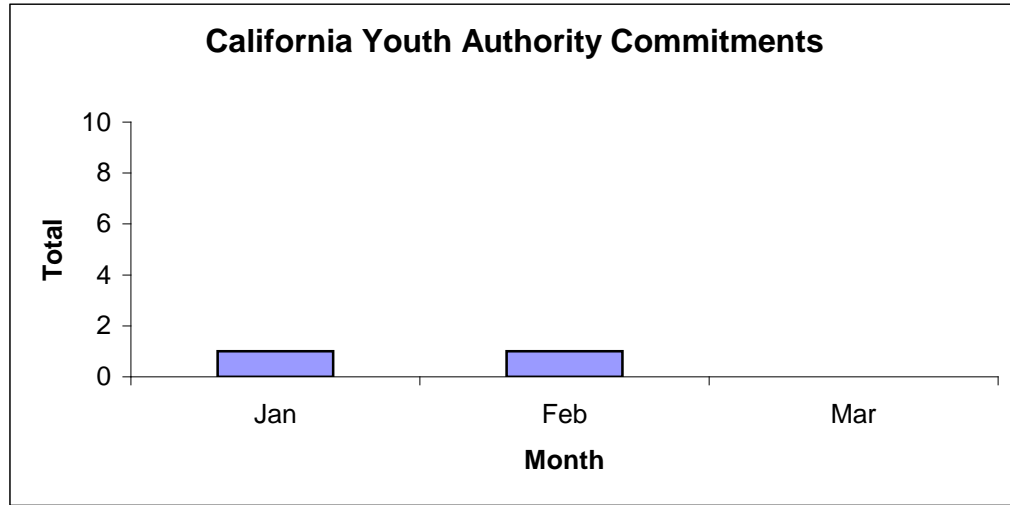
<b>Commitments</b>	<b>Jan</b>	<b>Feb</b>	<b>Mar</b>	<b>Apr</b>	<b>May</b>	<b>Jun</b>	<b>Jul</b>	<b>Aug</b>	<b>Sep</b>	<b>Oct</b>	<b>Nov</b>	<b>Dec</b>	<b>Total</b>
2013	9	11	9										29



<sup>1</sup> This report is based on 602 Commitments to out-of-home placements. If there is a 601 commitment, it will show as a footnote here. Figures are regularly updated to include reports from previous reporting periods.

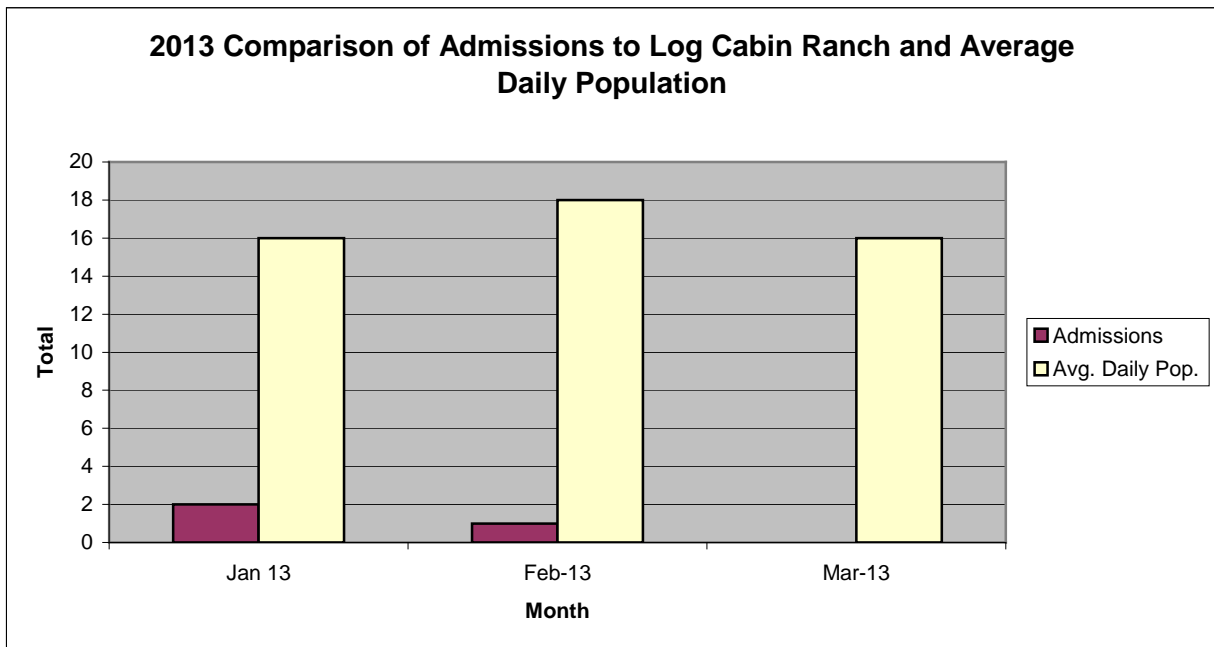
# California Youth Authority Commitments (Calendar Year 2013)

Commitments	Jan	Feb	Mar	Apr	May	Jun	Jul	Aug	Sep	Oct	Nov	Dec	Total
2013	1	1	0										2



## San Francisco Juvenile Probation Department

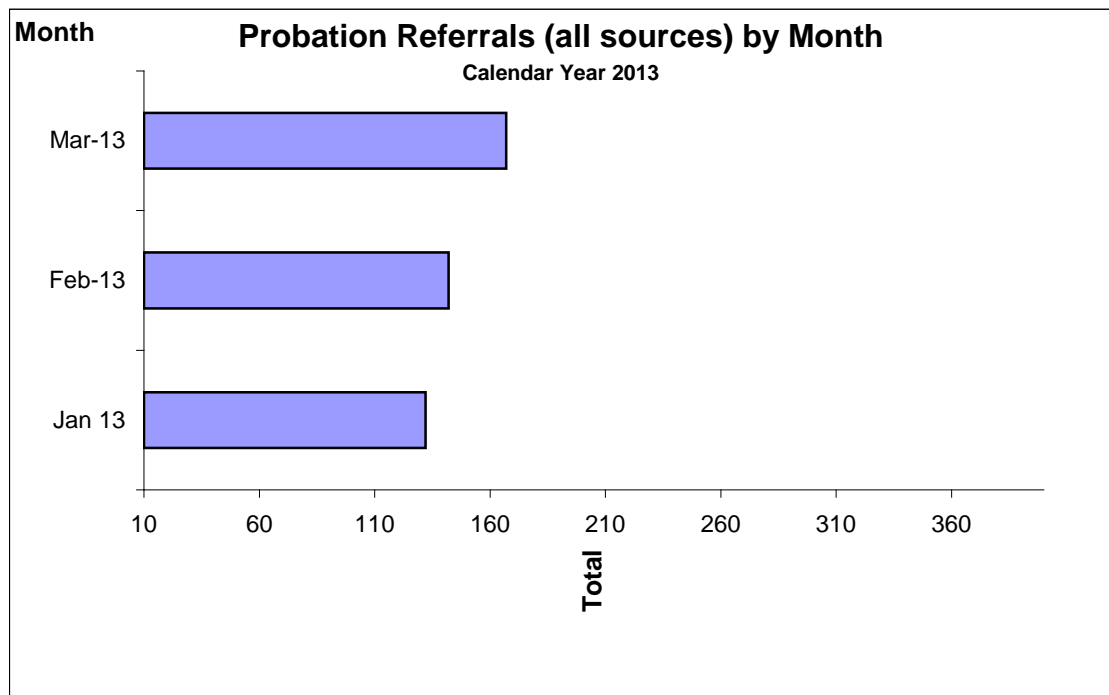
	Jan 13	Feb-13	Mar-13	Apr-13	May-13	Jun-13	Jul-13	Aug-13	Sep-13	Oct-13	Nov-13	Dec-13
Admissions	2	1	0									
Avg. Daily Pop.	16	18	16									



## Probation Referrals by Month Calendar Year 2013

### Probation Referrals (all sources) by Month (602 W&I)

Jan 13	132
Feb-13	142
Mar-13	167
Apr-13	
May-13	
Jun-13	
Jul-13	
Aug-13	
Sep-13	
Oct-13	
Nov-13	
Dec-13	

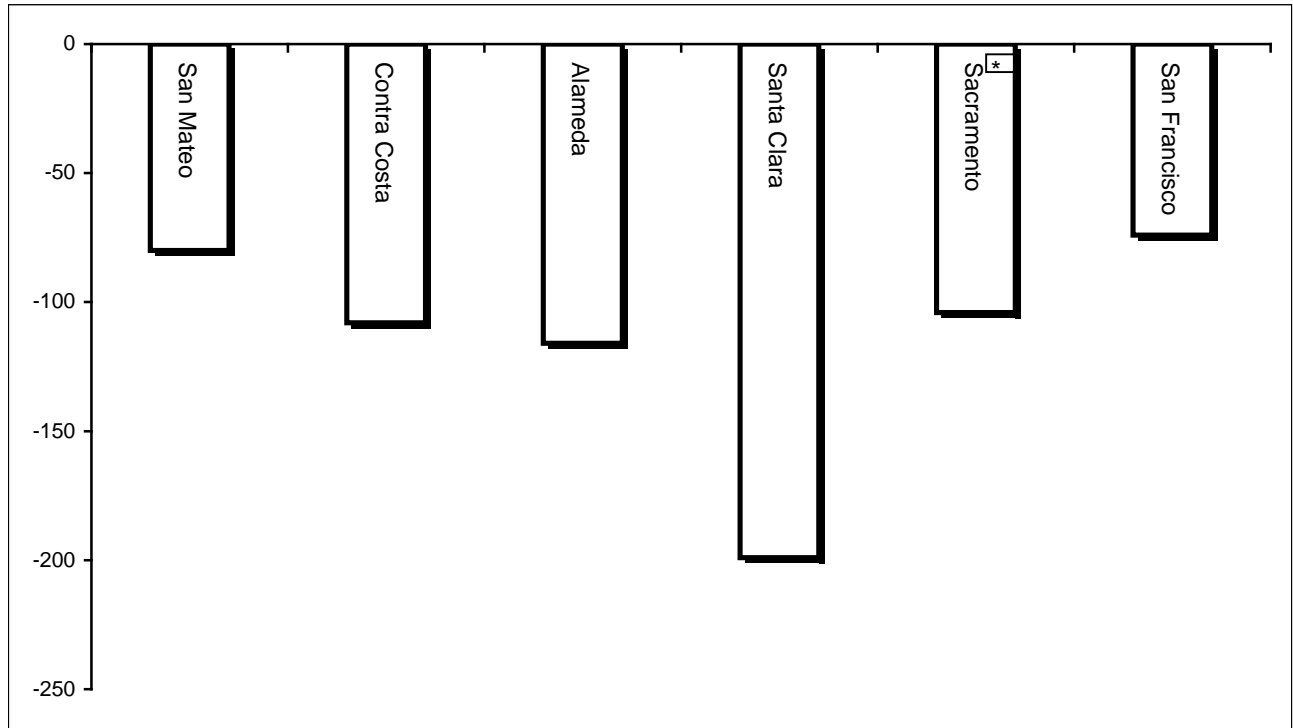


San Francisco Juvenile Probation Department  
Monthly Incident Report Form  
March 2013

<b>Juvenile Hall</b>	Battery on Staff	Injury to Staff Due to Restrain of Minor	Fights Minor on Minor	Battery Youth on Youth	Attempted Escape	AWOL	Attempted Suicide	Serious Contraband (Weapon illegal drug)	Use of Force	Self Inflicted Injuries
	0	0	0	5	0	0	0	18	0	0
	Assaults Minor on Minor	Battery on Staff with Injury	Fire	Fight with Injury	Battery Youth on Youth with Injury	Escape	Death	Suicide	Major Property Destruction	Use of Restraints (Handcuffs/ Shackles)
	0	0	0	0	0	0	0	0	0	2
<b>Log Cabin Ranch</b>	Battery on Staff	Injury to Staff due to Restraint of Minor	Fight	Battery Youth on Youth	Attempted Escape	AWOL	Attempted Suicide	Serious Contraband	Battery on Staff with Injury	Fire
	0	0	0	0	0	0	0	0	0	0
	Fight With Injury	Battery Youth on Youth with Injury	Escape	Death	Suicide	Major Property Destruction				
	0	0	0	0	0	0				

# Bay Area Resident Juvenile Hall Comparison Over/Under Capacity

April 1<sup>st</sup>, 2013

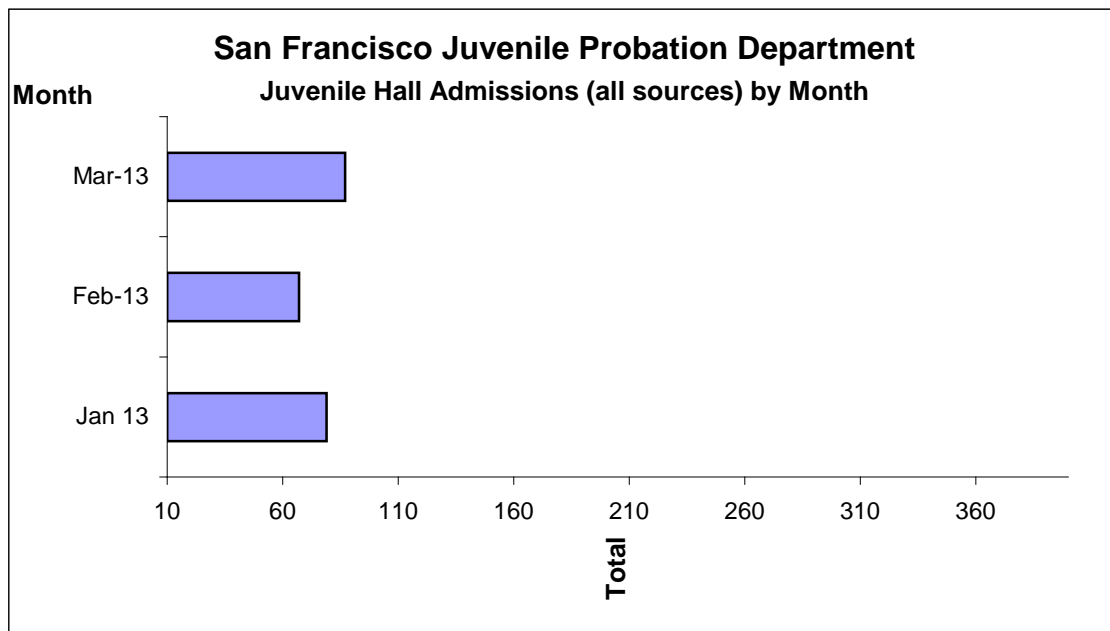


	Rated Capacity	Actual	Over/Under Capacity
San Mateo	180	100	-80
Contra Costa	240	132	-108
Alameda	280	164	-116
Santa Clara	360	161	-199
Sacramento	308	204	-104
San Francisco	150	76	-74



## Juvenile Hall Admissions by Month Calendar Year 2013

Jan 13	79
Feb-13	67
Mar-13	87
Apr-13	
May-13	
Jun-13	
Jul-13	
Aug-13	
Sep-13	
Oct-13	
Nov-13	
Dec-13	

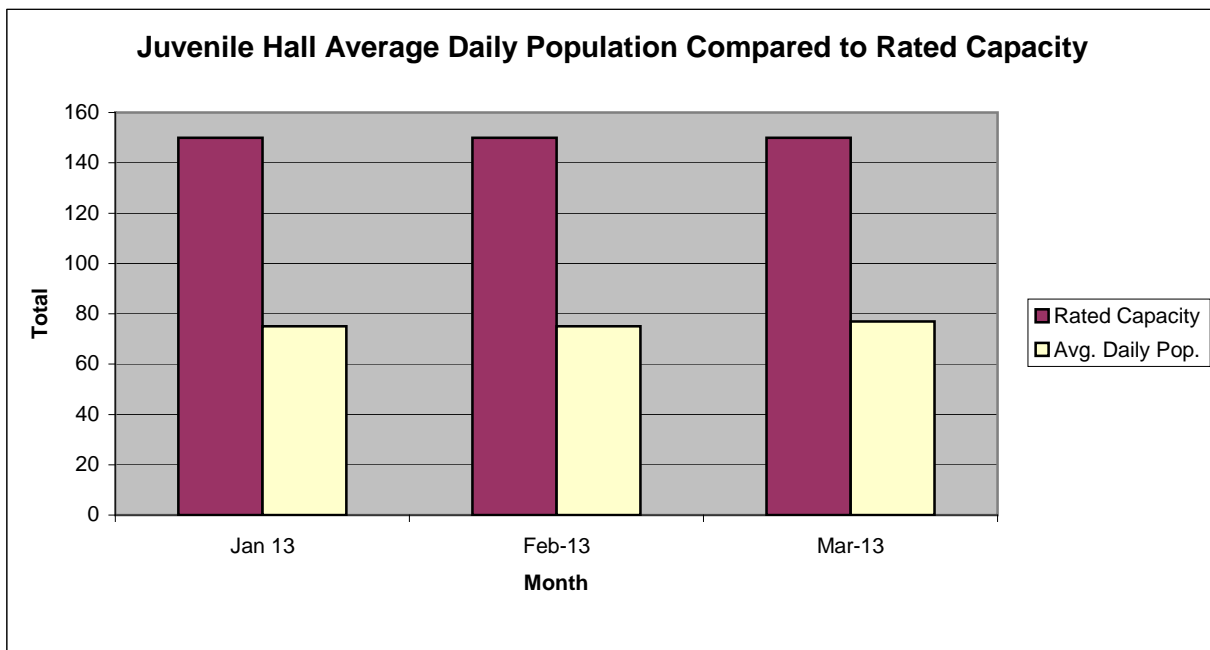


**Characteristics of Juvenile Hall Detainees on March 31st, 2013**

ReferralReason	MF*	Offense	Count	%
187 (A) PC	F	MURDER	2	2.67%
209 (A) PC	F	KIDNAPPING FOR RANSOM	1	1.33%
664 /187 (A) PC	F	ATTEMPTED MURDER	5	6.67%
261 (A)(2) PC	F	RAPE BY FORCE/FEAR/ETC	1	1.33%
288 (A) PC	F	LEWD OR LASCIVIOUS ACTS W/CHILD UNDER 14 YEARS	1	1.33%
211 PC	F	ROBBERY	21	28.00%
220 (A)(1) PC	F	ASSAULT:WITH INTENT TO RAPE	1	1.33%
459 PC	F	BURGLARY:FIRST DEGREE	2	2.67%
212.5 (C) PC	F	ROBBERY:SECOND DEGREE	3	4.00%
245 (A)(1) PC	F	FORCE OR ADW NOT FIREARM:GBI LIKELY	2	2.67%
11350 (A) HS	F	POSSESS NARCOTIC CONTROLLED SUBSTANCE	1	1.33%
29800 (A)(1) PC	F	FELON/ADDICT/POSSESS/ETC FIREARM	1	1.33%
25400 (C)(4) PC	F	CARRY CONCEALED WEAPON PROHIBITED CLASS/UNLAWFUL POSSESSION	4	5.33%
422 PC	F	THREATEN CRIME W/INTENT TO TERRORIZE	1	1.33%
459 PC	F	BURGLARY:SECOND DEGREE	1	1.33%
487 (A) PC	F	GRAND THEFT:MONEY/LABOR/PROPERTY	1	1.33%
10851 (A) VC	F	TAKE VEHICLE W/O OWNER'S CONSENT/VEHICLE THEFT	1	1.33%
496 (A) PC	F	RECEIVE/ETC KNOWN STOLEN PROPERTY	1	1.33%
29815 (A) PC	F	CONVICTED PERSON POSS/OWN/ETC FIREARM:PROBATION RESTRICTION	1	1.33%
594 (B)(1) PC	F	VANDALISM (\$400 OR MORE)	1	1.33%
148 (A)(1) PC	M	OBSTRUCT/RESIST/ETC PUBLIC/PEACE OFFICER/EMERGENCY MED TECH	1	1.33%
484 (A) PC	M	PETTY THEFT	1	1.33%
148.9 (A) PC	M	FALSE IDENTIFICATION TO SPECIFIC PEACE OFFICERS	1	1.33%
777 (A)(2) WI	M	FAIL TO OBEY ORDER OF JUVENILE COURT:602 WI	4	5.33%
628.1 WI	M	VIOLATION(S) OF HOME SUPERVISION CONDITION	4	5.33%
737 WI	M	CHANGE OF PLACEMENT/PLACEMENT FAILURE	1	1.33%
WRNT602		ARREST WARRANT	5	6.67%
BENCH WARRANT		BENCH WARRANT	1	1.33%
CTORD 602		COURT ORDER	5	6.67%
*M=Misdemeanor, F= Felony			<b>Total</b>	<b>75 100.00%</b>

## San Francisco Juvenile Probation Department

	Jan 13	Feb-13	Mar-13	Apr-13	May-13	Jun-13	Jul-13	Aug-13	Sep-13	Oct-13	Nov-13	Dec-13
Rated Capacity	150	150	150									
Avg. Daily Pop.	75	75	77									



## Juvenile Hall Average Length of Stay

For the Month of March 2013

### <sup>1</sup>Released

<b>Range of Days</b>	<i>1-10 days</i>	<i>11-20 days</i>	<i>21-30 days</i>	<i>30 or more days</i>	<b>Total</b>
# of Youth Released	37	15	7	24	83
% of Population	44.58%	18.07%	8.43%	28.92%	100%
# of Days	148	212	171	2,074	2,605
% of Total Days	5.68%	8.14%	6.56%	79.62%	100%
Average Length of Stay	4.00	14.13	24.43	86.42	31.39

### <sup>2</sup>In Custody

<b>Range of Days</b>	<i>1-10 days</i>	<i>11-20 days</i>	<i>21-30 days</i>	<i>30 or more days</i>	<b>Total</b>
# of Youth Detained	21	11	9	34	75
% of Population	28.00%	14.67%	12.00%	45.33%	100%
# of Days	103	155	226	4,429	4,913
% of Total Days	2.10%	3.15%	4.60%	90.15%	100%
Average Length of Stay	4.90	14.09	25.11	130.26	65.51

Notes: Less than one day of stay is calculated as one day.

<sup>1</sup>Length of stay is calculated according to release date for those who are released.

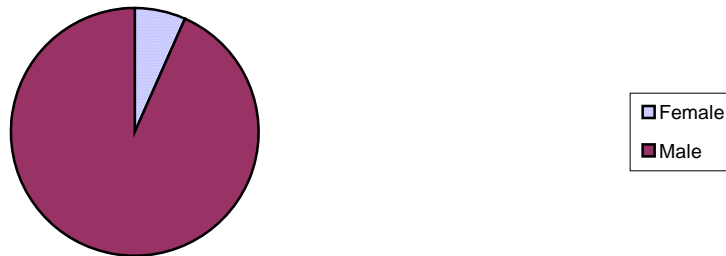
<sup>2</sup>For those still in custody, length of stay is calculated at the last day of the month.

# **Section III**

## **Demographics**

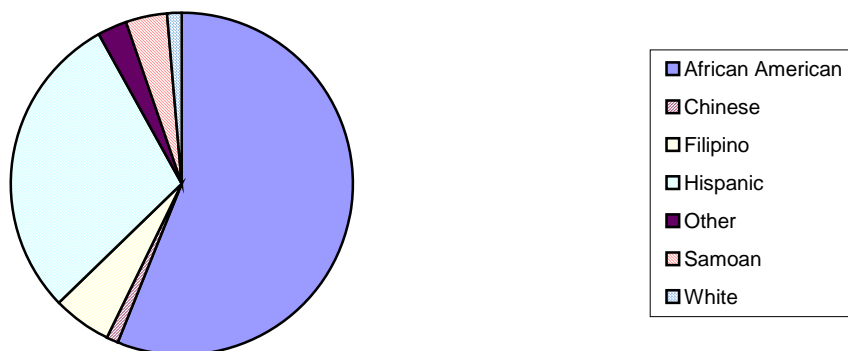
Gender	Frequency	Percent
Female	5	6.67%
Male	70	93.33%
<b>Total</b>	<b>75</b>	<b>100.00%</b>

**Demographic Characteristics  
Of Juvenile Hall Detainees on 3/31/13 by Gender**

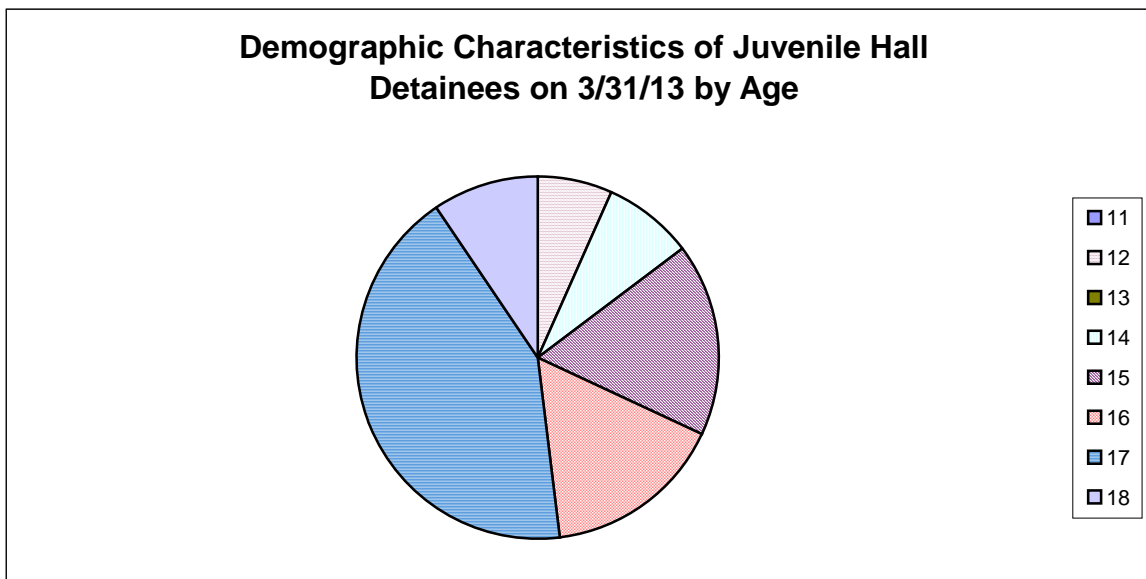


Race/Ethnic Origin	Frequency	Percent
African American	42	56.00%
Chinese	1	1.33%
Filipino	4	5.33%
Hispanic	22	29.33%
Other	2	2.67%
Samoan	3	4.00%
White	1	1.33%
<b>Total</b>	<b>75</b>	<b>100.00%</b>

**Demographic Characteristics of Juvenile Hall Detainees on  
3/31/13 by Race**

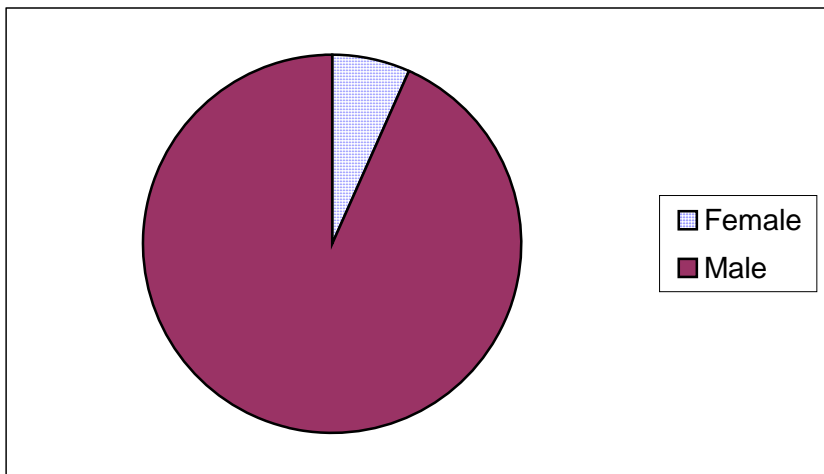


Age	Frequency	Percent
11	0	0.00%
12	5	6.67%
13	0	0.00%
14	6	8.00%
15	13	17.33%
16	12	16.00%
17	32	42.67%
18	7	9.33%
<b>Total</b>	<b>75</b>	<b>100.00%</b>



Demographic Characteristics of Juvenile Hall Detainees  
on 3/31/2013  
Age by Gender

Age	Female	Male	Total	
11	0	0	0	0.00%
12	0	5	5	6.67%
13	0	0	0	0.00%
14	1	5	6	8.00%
15	0	13	13	17.33%
16	0	12	12	16.00%
17	3	29	32	42.67%
18 and over	1	6	7	9.33%
<b>Total</b>	<b>5</b>	<b>70</b>	<b>75</b>	<b>100.00%</b>
	<b>6.67%</b>	<b>93.33%</b>	<b>100.00%</b>	





Demographic Characteristics  
Of Juvenile Hall Detainees on March 31<sup>st</sup>, 2013

---

<b>Geographic Residence of Youth</b>	<b>Count</b>	<b>%</b>
Richmond	1	1.3%
Marina	0	0.0%
North of Market/Downtown	0	0.0%
Treasure Island/Yerba Buena Island	1	1.3%
Western Addition	7	9.3%
South of Market/Tenderloin	3	4.0%
Sunset	1	1.3%
Haight Ashbury/Castro/Upper Market	1	1.3%
Inner Mission	9	12.0%
Potrero	2	2.7%
Parkside	2	2.7%
Ingleside (West of Twin Peaks)	5	6.7%
Outer Mission	13	17.3%
Bayview	17	22.7%
Non-San Francisco and Unavailable	13	17.3%
<b>Total</b>	<b>75</b>	<b>100.0%</b>

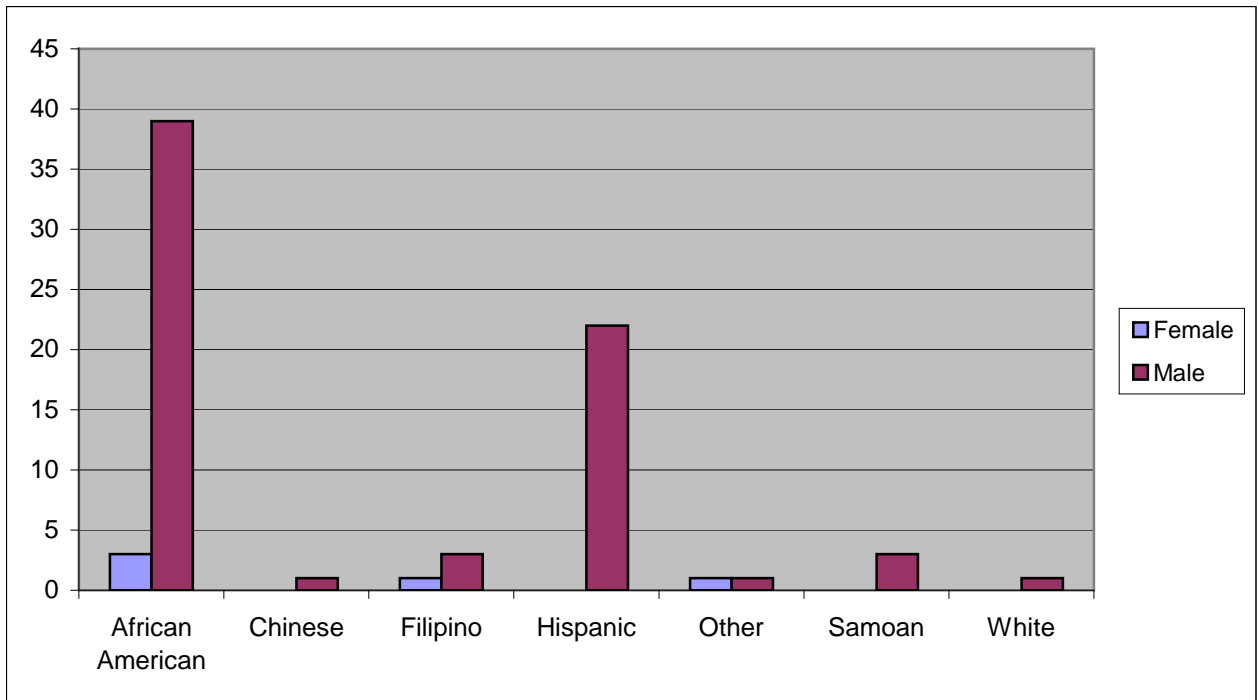
<b>Non-San Francisco and Unavailable</b>	<b>Count</b>	<b>%</b>
Brisbane	1	7.7%
Colma	1	7.7%
Fremont	1	7.7%
Millbrae	1	7.7%
Oakland	3	23.1%
Richmond	1	7.7%
South San Francisco	1	7.7%
Suisun	1	7.7%
Vallejo	1	7.7%
Unavailable	2	15.4%
<b>Total</b>	<b>13</b>	<b>100.0%</b>

Demographic Characteristics  
Of Juvenile Hall Detainees on March 31<sup>st</sup>, 2013

---

**Race/Ethnic Origin by Gender**

Race/Ethnicity	Female	Male	Total	%
African American	3	39	42	56.0%
Chinese	0	1	1	1.3%
Filipino	1	3	4	5.3%
Hispanic	0	22	22	29.3%
Other	1	1	2	2.7%
Samoan	0	3	3	4.0%
White	0	1	1	1.3%
<b>Total</b>	<b>5</b>	<b>70</b>	<b>75</b>	<b>100.0%</b>

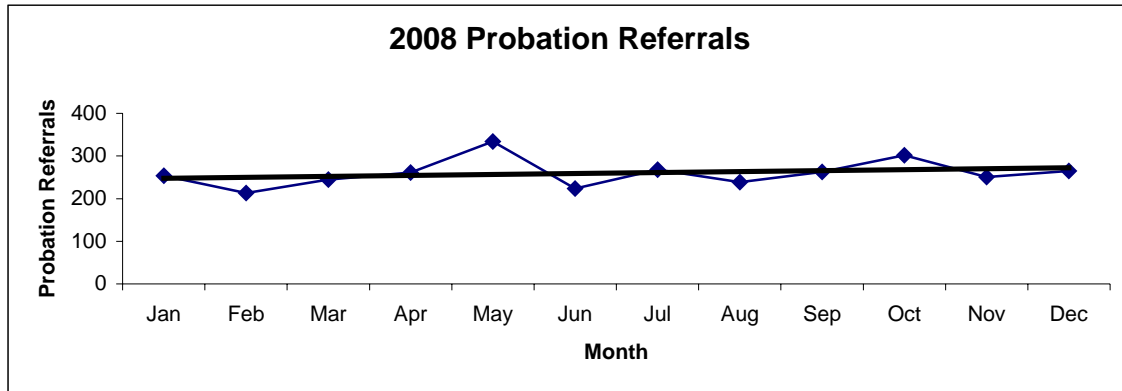


# **Section IV**

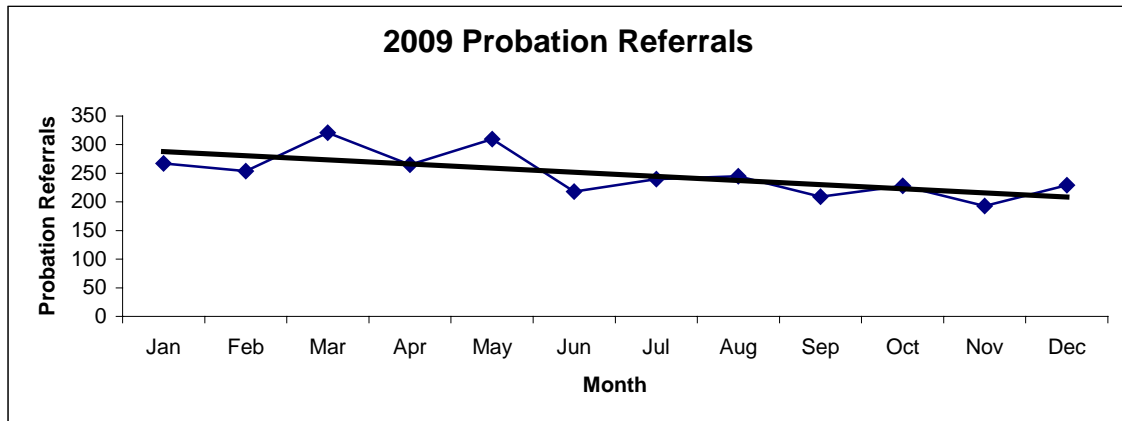
## **Historical Information**

San Francisco Juvenile Probation Department  
**Probation Referrals (all sources) By Month**  
 (2008-2010)

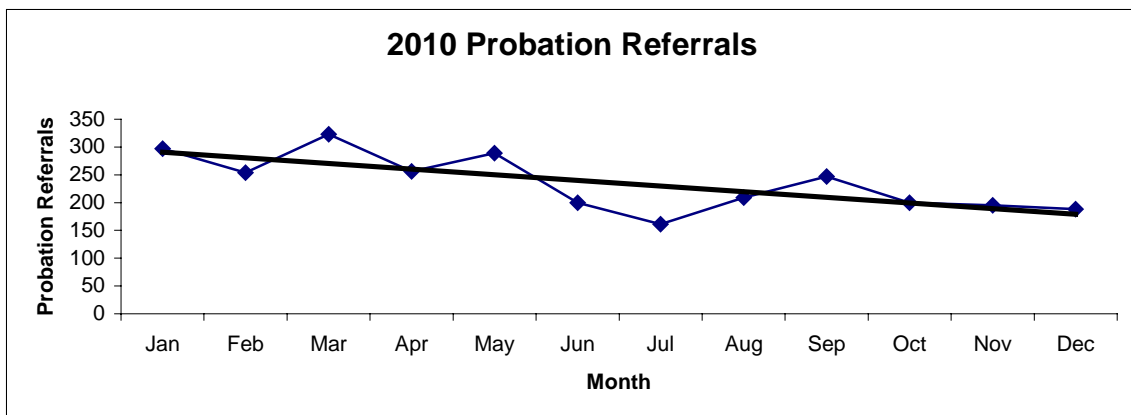
2008 Probation Referrals	Jan	Feb	Mar	Apr	May	Jun	Jul	Aug	Sep	Oct	Nov	Dec	Total
	254	213	245	261	334	224	268	239	263	302	251	265	<b>3119</b>



2009 Probation Referrals	Jan	Feb	Mar	Apr	May	Jun	Jul	Aug	Sep	Oct	Nov	Dec	Total
	267	254	321	265	310	218	240	245	209	228	193	229	<b>2979</b>

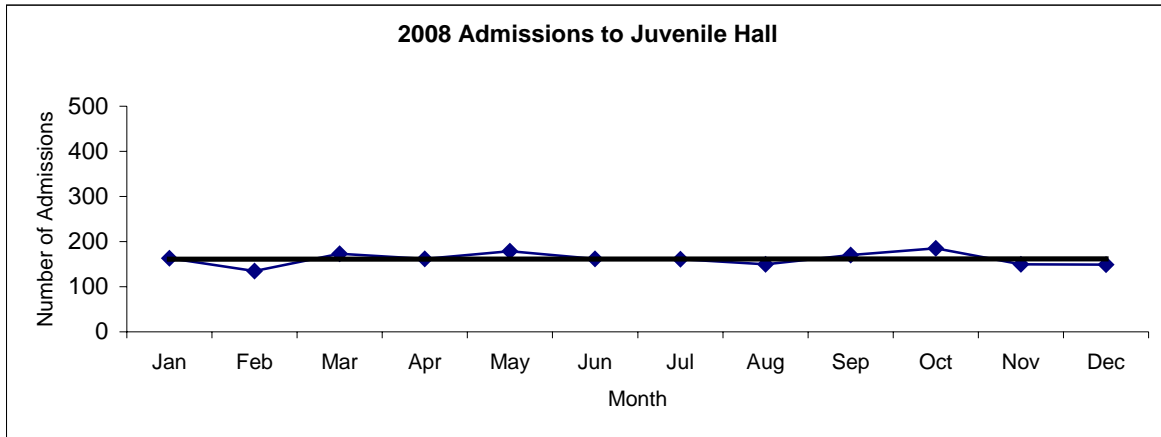


2010 Probation Referrals	Jan	Feb	Mar	Apr	May	Jun	Jul	Aug	Sep	Oct	Nov	Dec	Total
	297	254	323	256	289	200	161	209	247	200	195	188	<b>2819</b>

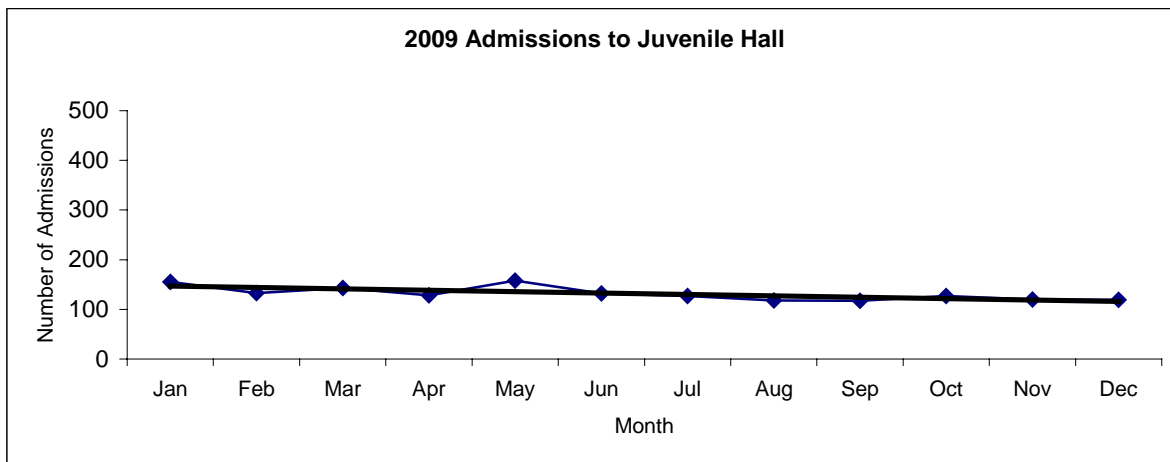


**San Francisco Juvenile Probation**  
**Juvenile Hall Admissions By Month**  
(2008-2010)

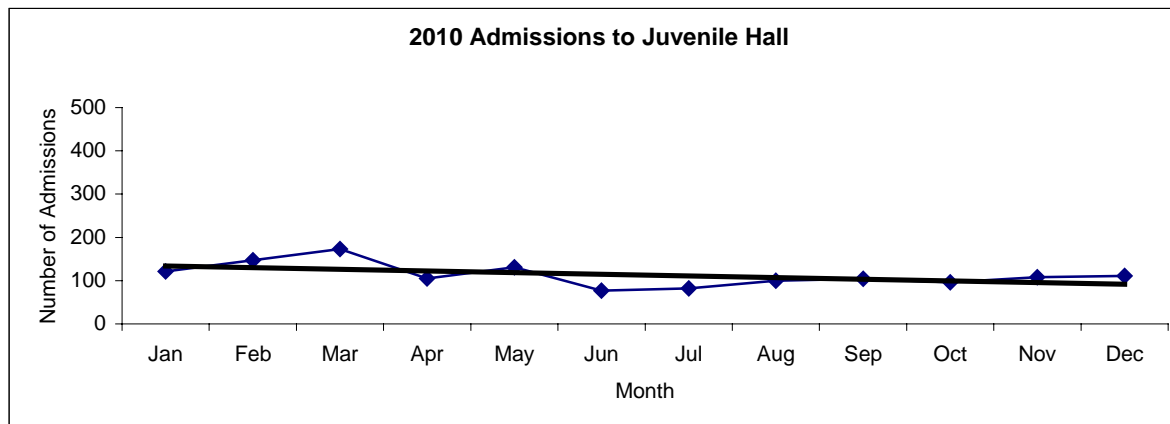
2008 Admissions	Jan	Feb	Mar	Apr	May	Jun	Jul	Aug	Sep	Oct	Nov	Dec	Total
	163	135	173	162	179	162	161	150	170	185	150	149	<b>1939</b>



2009 Admissions	Jan	Feb	Mar	Apr	May	Jun	Jul	Aug	Sep	Oct	Nov	Dec	Total
	155	133	143	128	158	132	127	118	117	127	120	119	<b>1577</b>

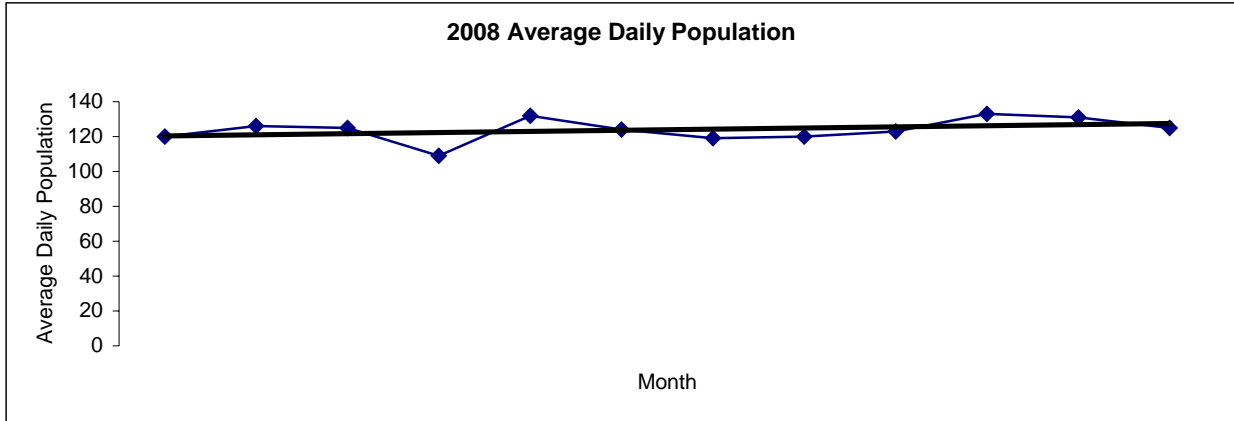


2010 Admissions	Jan	Feb	Mar	Apr	May	Jun	Jul	Aug	Sep	Oct	Nov	Dec	Total
	121	147	173	105	131	77	82	100	104	96	108	111	<b>1355</b>

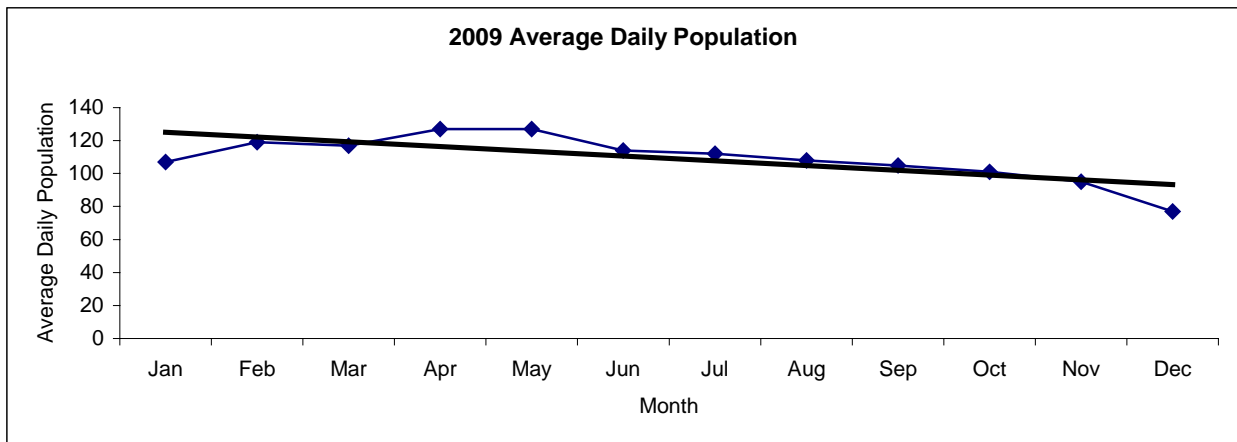


San Francisco Juvenile Probation  
**Juvenile Hall Average Daily Population By Month**  
 (2008-2010)

2008 Avg. Daily Pop.	Jan	Feb	Mar	Apr	May	Jun	Jul	Aug	Sep	Oct	Nov	Dec	Total
	120	126	125	109	132	124	119	120	123	133	131	125	<b>124</b>



2009 Avg. Daily Pop.	Jan	Feb	Mar	Apr	May	Jun	Jul	Aug	Sep	Oct	Nov	Dec	Total
	107	119	117	127	127	114	112	108	105	101	95	77	<b>109</b>



2010 Avg. Daily Pop.	Jan	Feb	Mar	Apr	May	Jun	Jul	Aug	Sep	Oct	Nov	Dec	Total
	85	104	110	107	99	97	90	88	90	84	79	92	<b>94</b>

