

City and County of San Francisco



Juvenile Probation Department

Monthly Report for May 2013

Presented to the Juvenile Probation Commission

June 12th, 2013

William P. Siffermann
Chief Probation Officer

Prepared by Jose Luis Perla
Information Technology Director
(415) 753-7686
jose.perla@sfgov.org

Table of Contents

Section I Summary Reports

Juvenile Hall, Log Cabin Ranch Summary Statistics	1
Probation Services Summary and California Youth Authority Statistics	2
Active Cases by Units	3

Section II Current Month General Detail

Probation Referrals, Juvenile Admissions And Average Daily Population	4
Juvenile Hall Admissions and Average Daily Population	5
Commitments to out-of-home placement	6
Commitments to California Youth Authority	7
Log Cabin Ranch Admissions and Average Daily Population	8
Probation Referrals	9
Juvenile Hall And Log Cabin Ranch Incident Report	10
Bay Area Resident Juvenile Hall Comparison	11
Juvenile Hall Admissions	12
Juvenile Hall Detainees by Detention Reason	13
Juvenile Hall Average Daily Population by Rated Capacity	14
Juvenile Hall Average Length of Stay	15

Section III Demographics

Juvenile Hall Detainees by Sex and Race/Ethnic Origin	16
Juvenile Hall Detainees by Age	17
Juvenile Hall Detainees by Age and Sex	18
Juvenile Hall Detainees by Geographic Residence of Youth	19
Juvenile Hall Detainees by Race/Ethnic Origin and Sex	20

Section IV

Historical Information

2004-2006 Probation Referrals	21
2004-2006 Juvenile Hall Admissions	22
2004-2006 Juvenile Hall Average Daily Population	23

Section I

Summary Reports

Summary Report for the Month of May 2013

Juvenile Hall	<i>April 2012</i>	<i>April 2013</i>	<i>May 2012</i>	<i>May 2013</i>	<i>YTD 2012</i>	<i>YTD 2013</i>
Admissions	86	79	77	90	385	402
Average Daily Population	70	81	63	82	71	78
Average Length of Stay (Releases)	25.38	32.29	24.04	33.89	26.71	28.65
Average Length of Stay (In Custody)	67.86	63.50	68.23	54.86	70.18	65.03
Releases	89	84	78	86	393	550
Log Cabin Ranch						
Admissions:						
First Time Commitments	2	3	0	3	11	9
Recommitments	0	0	0	0	0	0
<i>Total</i>	2	3	0	3	11	9
Releases:						
Graduated	0	0	0	0	1	0
Escape	1	0	0	0	1	0
Other releases	1	1	3	3	12	8
<i>Total</i>	2	1	3	3	14	8
Average Daily Population	18	15	16	17	17	16

Summary Report for the Month of May 2013

Probation Services	<i>April 2013</i>	<i>May 2013</i>	<i>Year To Date 2013</i>
Probation Referrals	149	177	767
Total Petitions including violation of probation	77	89	366
Selected Court Dispositions:			
California Youth Authority	0	0	2
Log Cabin Ranch	3	3	9
Out of Home Placement	3	5	37
Ward Probation	19	18	89
Non-Ward Probation (725a WI)	2	5	19
Informal Probation (654 WI)	7	5	28
Violation of Probation Petitions Filed	5	9	41
California Youth Authority Monthly Count San Francisco County Juvenile Court Cases May 31 st , 2013			
Category	Institutions	Parole	
Males			
White	0	0	
Hispanic	2	0	
African American	4	0	
Asian	1	0	
Native American	0	0	
Filipino	0	0	
Pacific Islander	0	0	
Other	0	0	
Total	7	0	
Females			
White	0	0	
Hispanic	0	0	
African American	0	0	
Asian	0	0	
Native American	0	0	
Filipino	0	0	
Pacific Islander	0	0	
Other	0	0	
Total	0	0	
Grand Total	7	0	

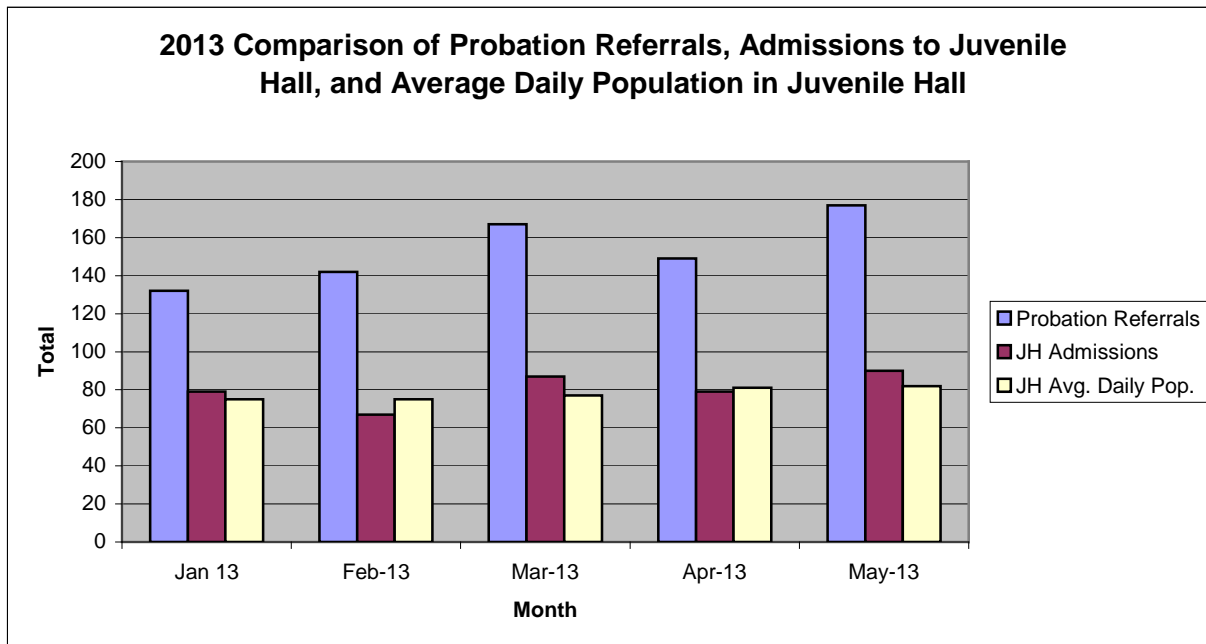
Summary Report for the Month of May 2013

Probation Services			
Active Cases by Units	April 2013	May 2013	May Average # Youth by PO
CARC	167	174	174
Intake Green (Custody Screening Investigation)	121	120	17
Intake Gold (Probation Services 1)	167	167	24
Family Integrated Treatment Services (FITS) PS2	126	127	18
Serious Offenders Program (Probation Services 3)	158	156	22
Out-of-home Placement (Probation Services 4)	156	156	26
Juvenile Collaborative Re-entry Unit (JCRU)	34	36	12
<i>Total</i>	929	936	42
Total Active Intake Cases	463	475	
Total Probation/Supervision Cases	466	461	
<i>Total</i>	929	936	

Section II
Current Month
General Detail

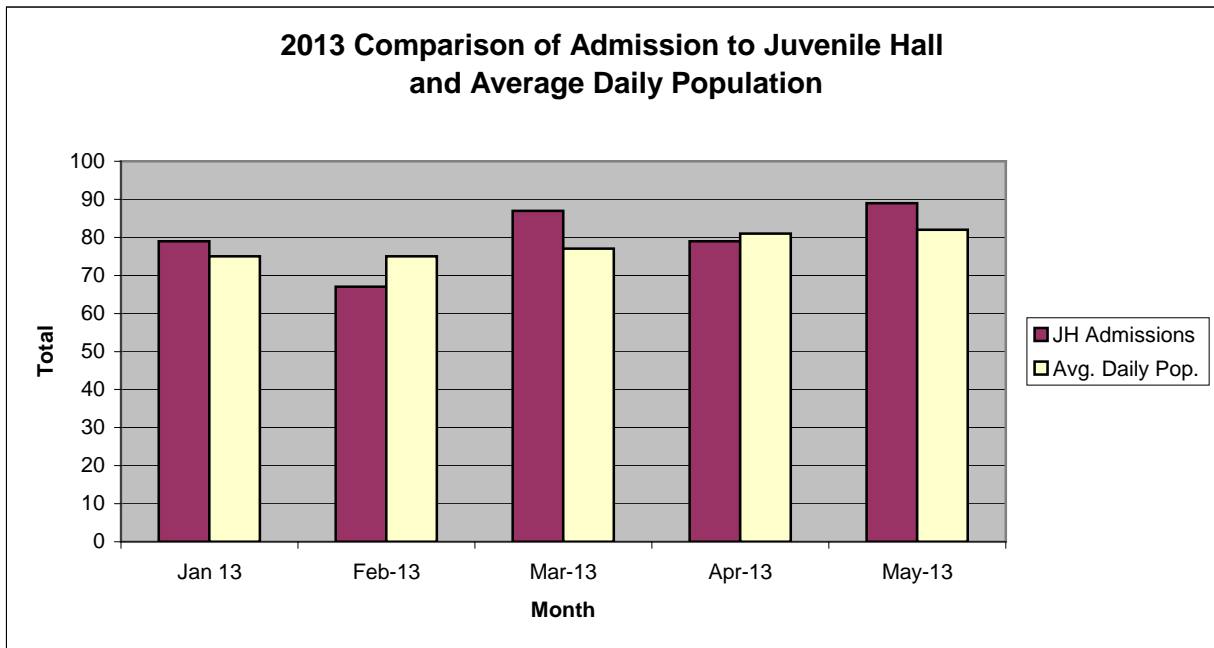
San Francisco Juvenile Probation Department

	Jan 13	Feb-13	Mar-13	Apr-13	May-13	Jun-13	Jul-13	Aug-13	Sep-13	Oct-13	Nov-13	Dec-13
Probation Referrals	132	142	167	149	177							
JH Admissions	79	67	87	79	90							
JH Avg. Daily Pop.	75	75	77	81	82							



San Francisco Juvenile Probation Department

	Jan 13	Feb-13	Mar-13	Apr-13	May-13	Jun-13	Jul-13	Aug-13	Sep-13	Oct-13	Nov-13	Dec-13
JH Admissions	79	67	87	79	89							
Avg. Daily Pop.	75	75	77	81	82							

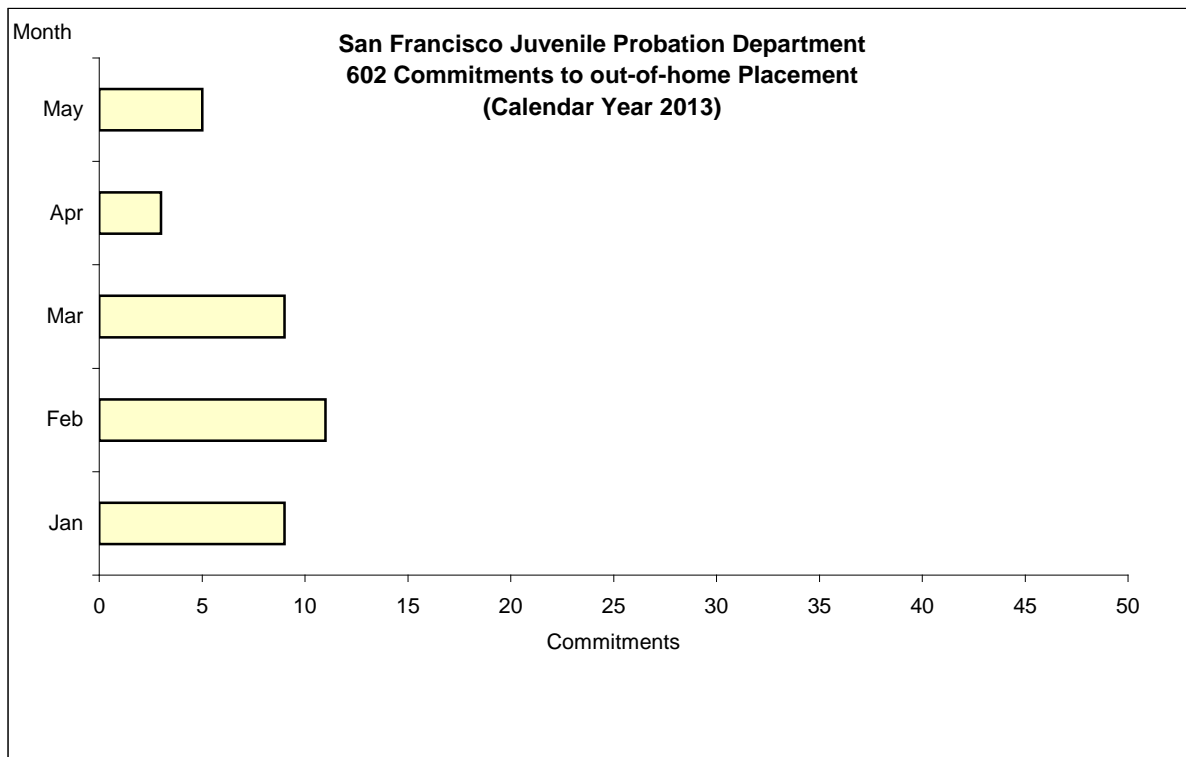


Out-of-Home Placement¹

Commitments of 602's

Calendar Year 2013

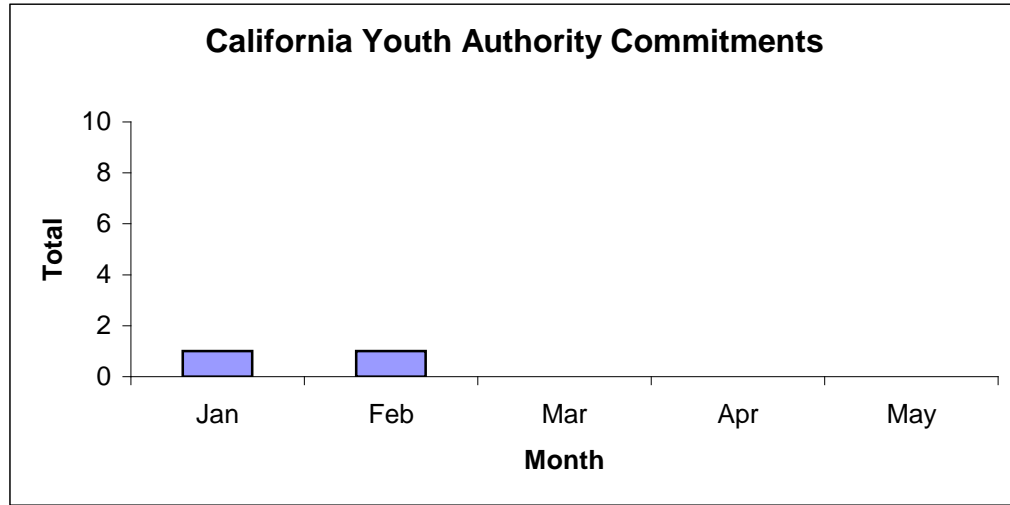
Commitments	Jan	Feb	Mar	Apr	May	Jun	Jul	Aug	Sep	Oct	Nov	Dec	Total
2013	9	11	9	3	5								37



¹ This report is based on 602 Commitments to out-of-home placements. If there is a 601 commitment, it will show as a footnote here. Figures are regularly updated to include reports from previous reporting periods.

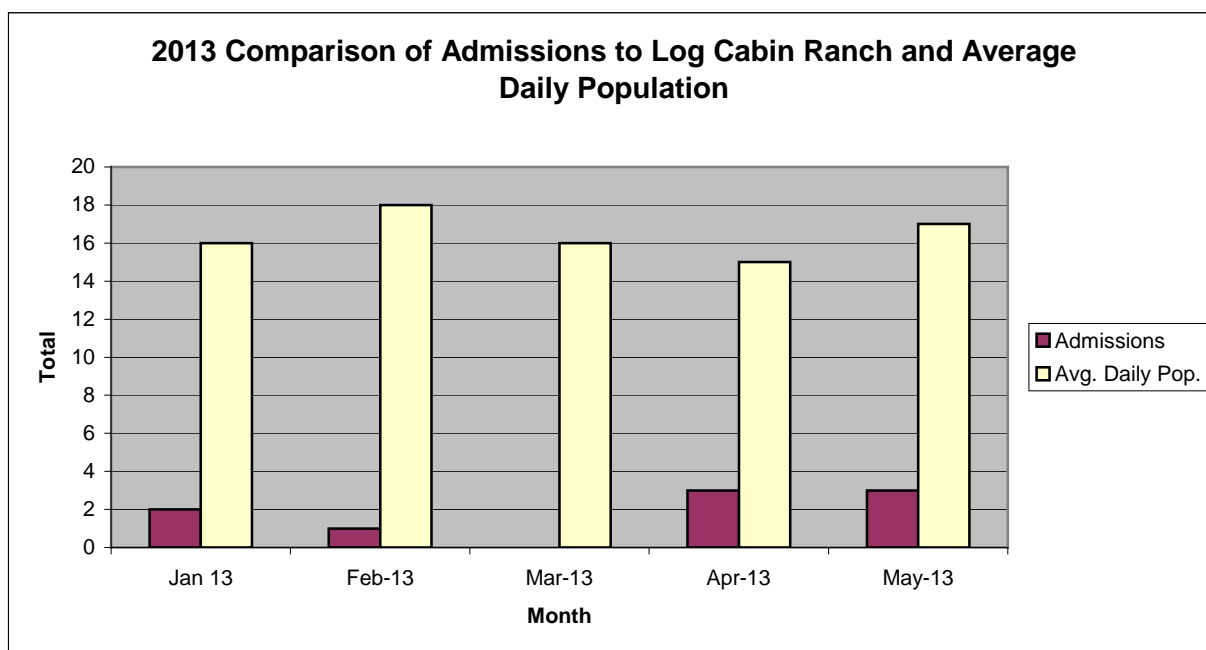
California Youth Authority Commitments (Calendar Year 2013)

Commitments	Jan	Feb	Mar	Apr	May	Jun	Jul	Aug	Sep	Oct	Nov	Dec	Total
2013	1	1	0	0	0								2



San Francisco Juvenile Probation Department

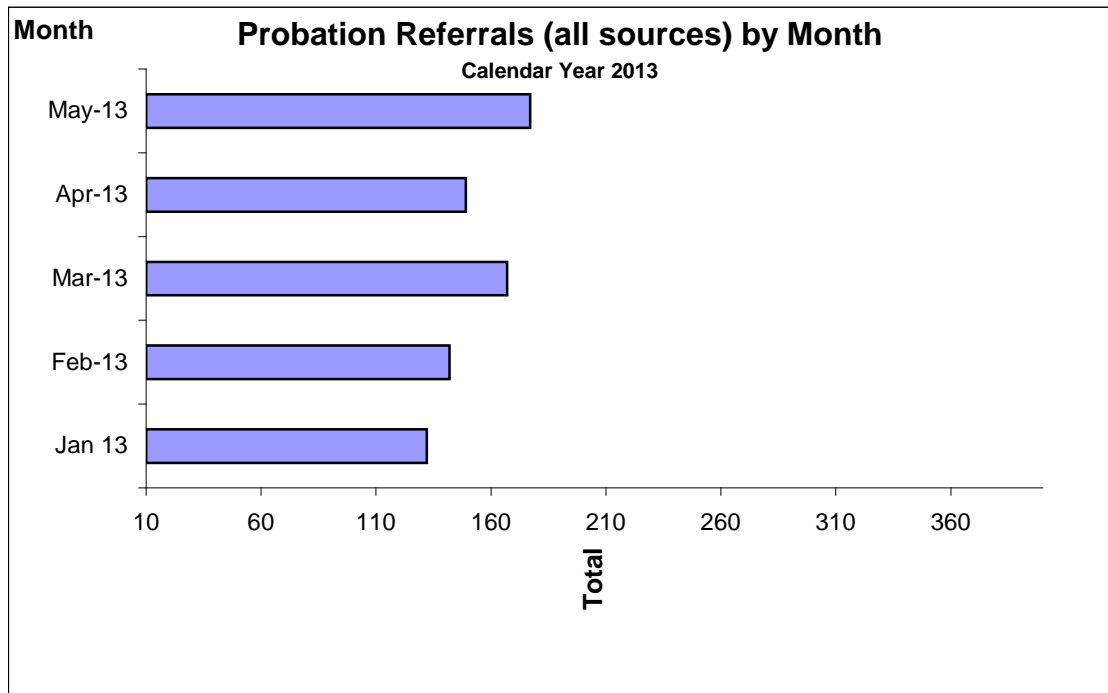
	Jan 13	Feb-13	Mar-13	Apr-13	May-13	Jun-13	Jul-13	Aug-13	Sep-13	Oct-13	Nov-13	Dec-13
Admissions	2	1	0	3	3							
Avg. Daily Pop.	16	18	16	15	17							



Probation Referrals by Month Calendar Year 2013

Probation Referrals (all sources) by Month (602 W&I)

Jan 13	132
Feb-13	142
Mar-13	167
Apr-13	149
May-13	177
Jun-13	
Jul-13	
Aug-13	
Sep-13	
Oct-13	
Nov-13	
Dec-13	

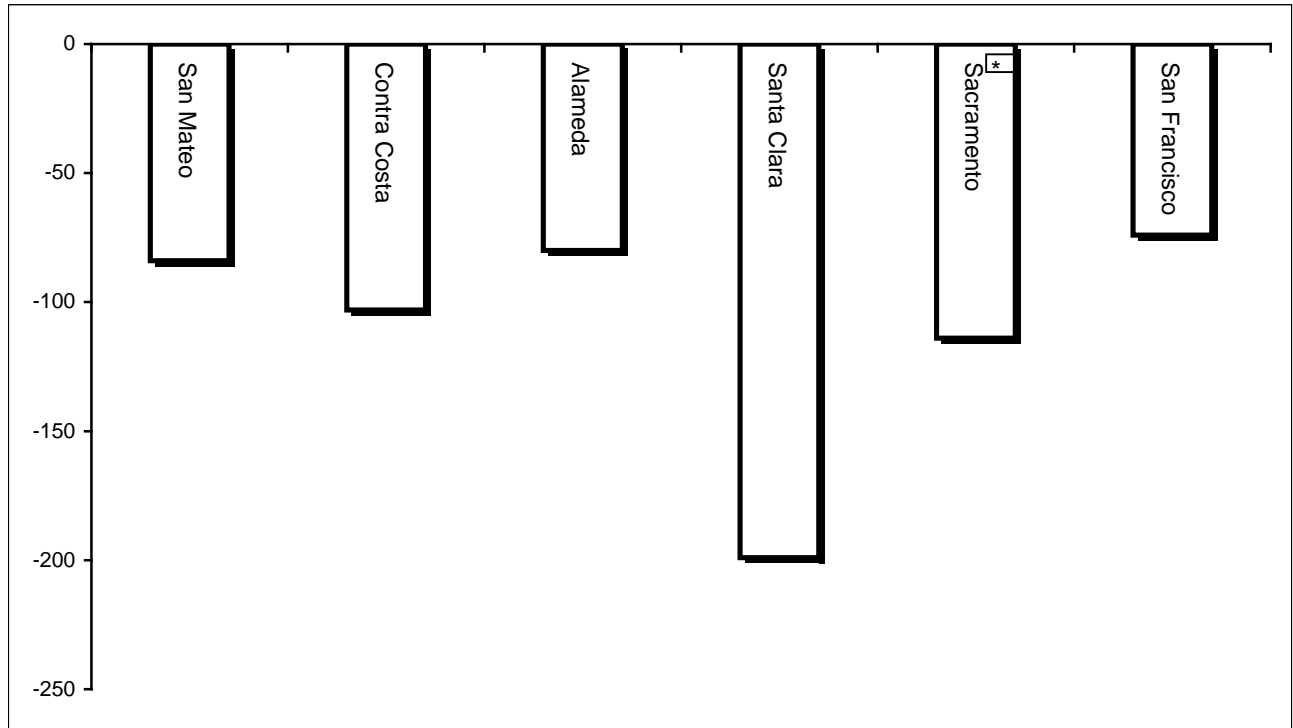


San Francisco Juvenile Probation Department
Monthly Incident Report Form
May 2013

Juvenile Hall	Battery on Staff	Injury to Staff Due to Restrain of Minor	Fights Minor on Minor	Battery Youth on Youth	Attempted Escape	AWOL	Attempted Suicide	Serious Contraband (Weapon illegal drug)	Use of Force	Self Inflicted Injuries
	1	1	0	6	1	0	0	12	0	0
	Assaults Minor on Minor	Battery on Staff with Injury	Fire	Fight with Injury	Battery Youth on Youth with Injury	Escape	Death	Suicide	Major Property Destruction	Use of Restraints (Handcuffs/ Shackles)
	0	0	0	0	0	0	0	0	0	9
Log Cabin Ranch	Battery on Staff	Injury to Staff due to Restraint of Minor	Fight	Battery Youth on Youth	Attempted Escape	AWOL	Attempted Suicide	Serious Contraband	Battery on Staff with Injury	Fire
	0	0	1	0	0	0	0	0	0	0
	Fight With Injury	Battery Youth on Youth with Injury	Escape	Death	Suicide	Major Property Destruction				
	1	0	0	0	0	0				

Bay Area Resident Juvenile Hall Comparison Over/Under Capacity

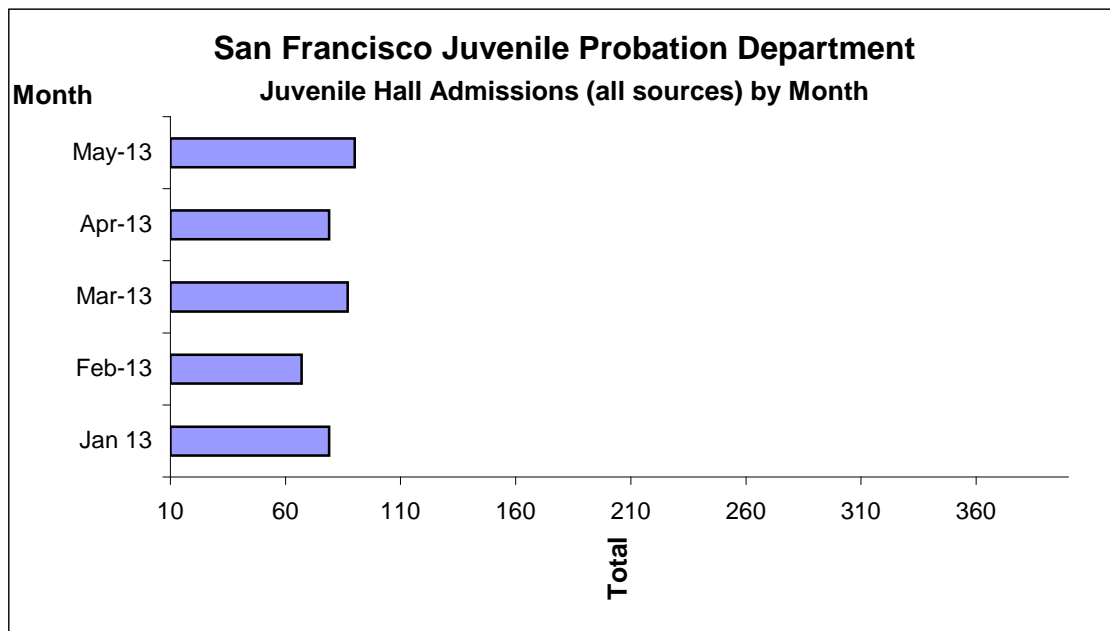
June 3rd, 2013



	Rated Capacity	Actual	Over/Under Capacity
San Mateo	180	96	-84
Contra Costa	240	137	-103
Alameda	280	200	-80
Santa Clara	360	161	-199
Sacramento	308	194	-114
San Francisco	150	76	-74

Juvenile Hall Admissions by Month Calendar Year 2013

Jan 13	79
Feb-13	67
Mar-13	87
Apr-13	79
May-13	90
Jun-13	
Jul-13	
Aug-13	
Sep-13	
Oct-13	
Nov-13	
Dec-13	



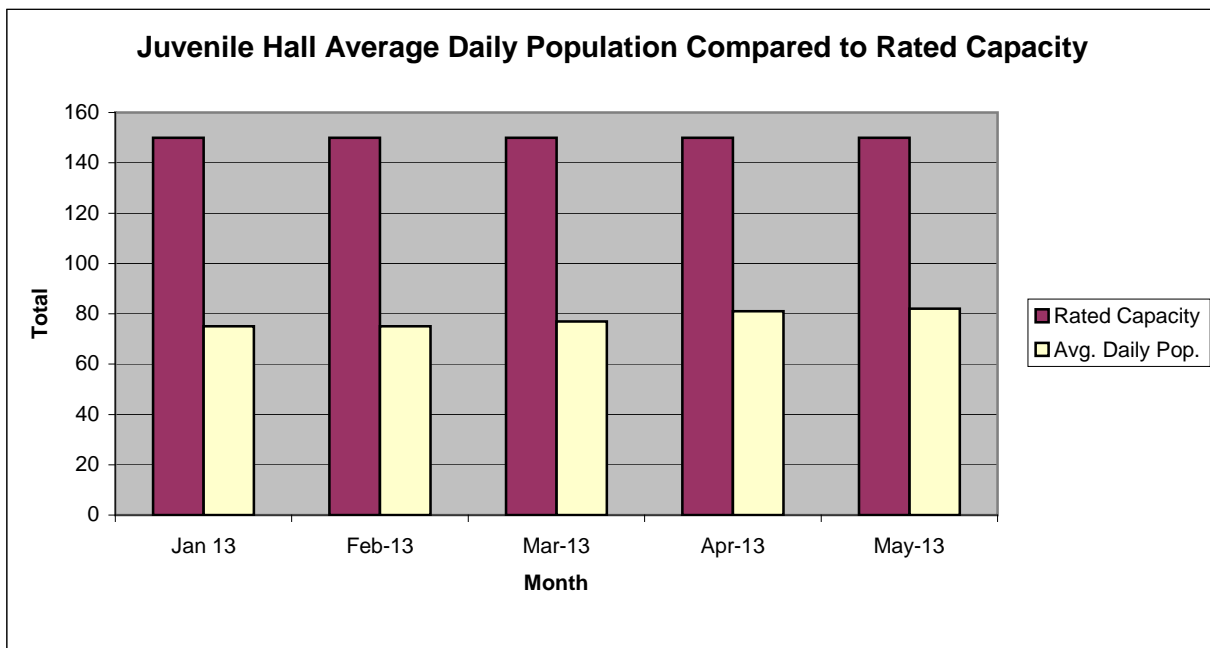
Characteristics of Juvenile Hall Detainees on May 31st, 2013

ReferralReason	MF*	Literal	Count	%
187 (A) PC	F	MURDER	3	3.90%
664 /187 (A) PC	F	ATTEMPTED MURDER	2	2.60%
261 (A)(2) PC	F	RAPE BY FORCE/FEAR/ETC	1	1.30%
207 (A) PC	F	KIDNAPPING	1	1.30%
211 PC	F	ROBBERY	15	19.48%
11352 (A) HS	F	TRANSPORT/SELL NARCOTIC/CONTROLLED SUBSTANCE	2	2.60%
459 PC	F	BURGLARY	1	1.30%
212.5 (C) PC	F	ROBBERY:SECOND DEGREE	2	2.60%
11360 (A) HS	F	SELL/FURNISH/ETC MARIJUANA/HASHISH	1	1.30%
245 (A)(2) PC	F	ASSAULT WITH FIREARM ON PERSON	1	1.30%
245 (A) PC	F	ASSAULT:DEADLY WEAPON OR FORCE:POSSIBLE GREAT BODILY INJ	1	1.30%
245 (A)(1) PC	F	ASSAULT W/DEADLY WEAPON:NOT F/ARM	4	5.19%
245 (A)(4) PC	F	ADW WITH FORCE:POSSIBLE GBI	1	1.30%
25400 (C)(4) PC	F	CARRY CONCEALED WEAPON PROHIBITED CLASS/UNLAWFUL POSSESSION	1	1.30%
242 PC	M	BATTERY	1	1.30%
459 PC	F	BURGLARY:SECOND DEGREE	1	1.30%
487 (A) PC	F	GRAND THEFT:MONEY/LABOR/PROPERTY	1	1.30%
487 PC	F	GRAND THEFT	1	1.30%
496 C PC	F	COPY/ETC REALTY TITLE INFORMATION [OVER \$400]	1	1.30%
496 (A) PC	F	RECEIVE/ETC KNOWN STOLEN PROPERTY	1	1.30%
29820 (B) PC	F	CONVICTED PERSON POSSESS/ETC FIREARM WHILE UNDER AGE 30	1	1.30%
594 (B)(1) PC	F	VANDALISM (\$400 OR MORE)	1	1.30%
148 (A)(1) PC	M	OBSTRUCT/RESIST/ETC PUBLIC/PEACE OFFICER/EMERGENCY MED TECH	1	1.30%
871 (A) WI	M	MINOR ATTEMPT ESCAPE/ESCAPE COUNTY FACILITY	1	1.30%
148.9 (A) PC	M	FALSE IDENTIFICATION TO SPECIFIC PEACE OFFICERS	1	1.30%
628.1 WI	M	VIOLATION(S) OF HOME SUPERVISION CONDITION	6	7.79%
777 (A)(2) WI	M	FAIL TO OBEY ORDER OF JUVENILE COURT:602 WI	4	5.19%
737 WI	M	CHANGE OF PLACEMENT/PLACEMENT FAILURE	2	2.60%
BENCH WARRANT XX		BENCH WARRANT	2	2.60%
WRNT602 XX		WARRANT 602	12	15.58%
CTORD 602 XX		COURT ORDER 602	4	5.19%
		Total	77	100.00%

*M=Misdemeanor; F=Felony

San Francisco Juvenile Probation Department

	Jan 13	Feb-13	Mar-13	Apr-13	May-13	Jun-13	Jul-13	Aug-13	Sep-13	Oct-13	Nov-13	Dec-13
Rated Capacity	150	150	150	150	150							
Avg. Daily Pop.	75	75	77	81	82							



Juvenile Hall Average Length of Stay

For the Month of May 2013

¹Released

Range of Days	<i>1-10 days</i>	<i>11-20 days</i>	<i>21-30 days</i>	<i>30 or more days</i>	Total
# of Youth Released	34	12	10	26	82
% of Population	41.46%	14.63%	12.20%	31.71%	100%
# of Days	186	193	237	2,163	2,779
% of Total Days	6.69%	6.94%	8.53%	77.83%	100%
Average Length of Stay	5.47	16.08	23.70	83.19	33.89

²In Custody

Range of Days	<i>1-10 days</i>	<i>11-20 days</i>	<i>21-30 days</i>	<i>30 or more days</i>	Total
# of Youth Detained	22	12	11	32	77
% of Population	28.57%	15.58%	14.29%	41.56%	100%
# of Days	139	174	268	3,643	4,224
% of Total Days	3.29%	4.12%	6.34%	86.25%	100%
Average Length of Stay	6.32	14.50	24.36	113.84	54.86

Notes: Less than one day of stay is calculated as one day.

¹Length of stay is calculated according to release date for those who are released.

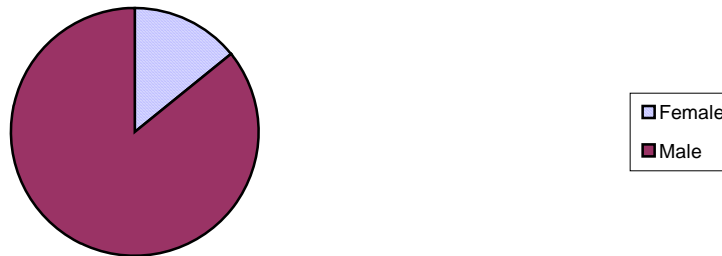
²For those still in custody, length of stay is calculated at the last day of the month.

Section III

Demographics

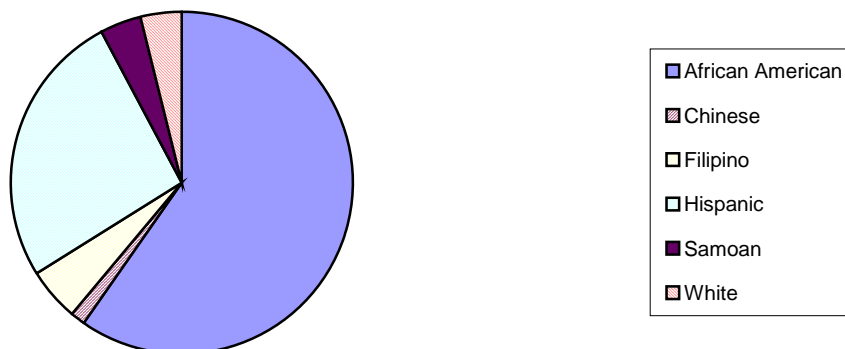
Gender	Frequency	Percent
Female	11	14.29%
Male	66	85.71%
Total	77	100.00%

**Demographic Characteristics
Of Juvenile Hall Detainees on 5/31/13 by Gender**

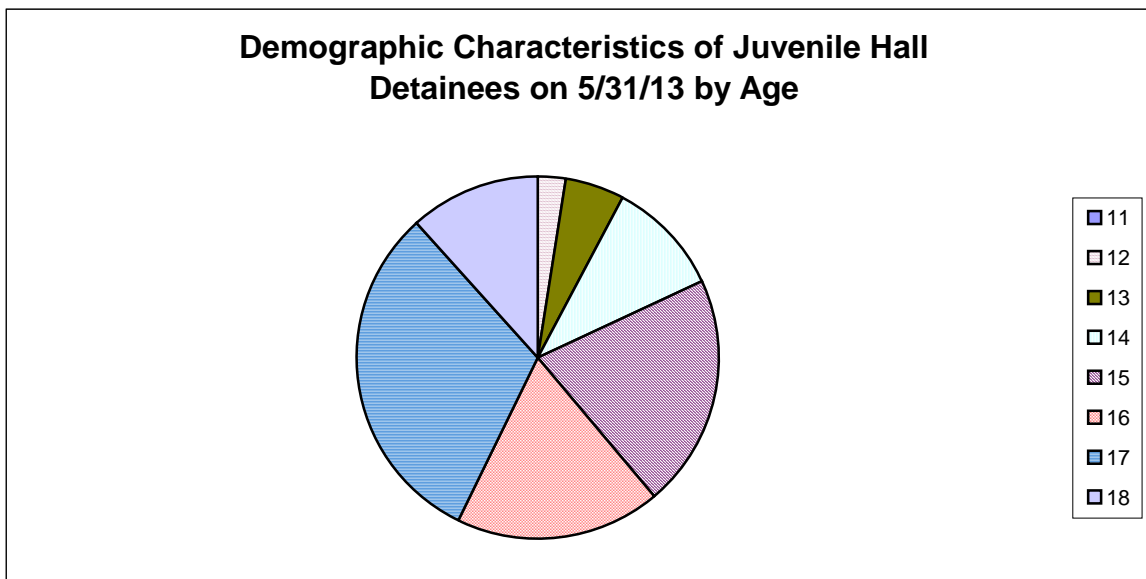


Race/Ethnic Origin	Frequency	Percent
African American	46	59.74%
Chinese	1	1.30%
Filipino	4	5.19%
Hispanic	20	25.97%
Samoan	3	3.90%
White	3	3.90%
Total	77	100.00%

**Demographic Characteristics of Juvenile Hall Detainees on
5/31/13 by Race**

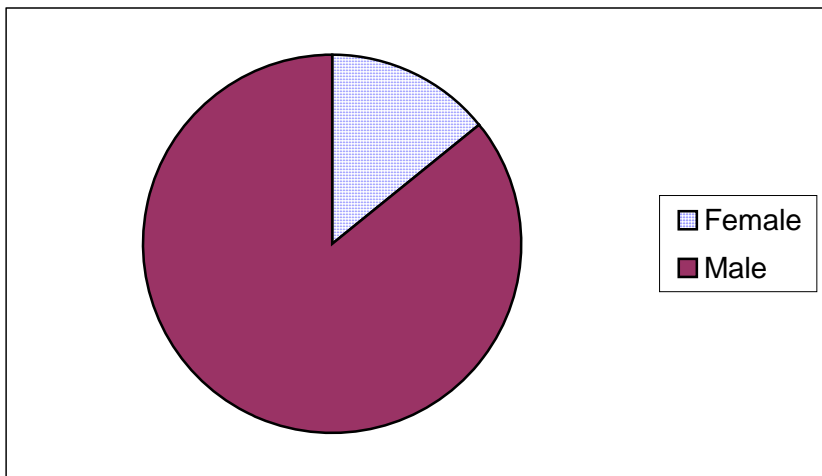


Age	Frequency	Percent
11	0	0.00%
12	2	2.60%
13	4	5.19%
14	8	10.39%
15	16	20.78%
16	14	18.18%
17	24	31.17%
18	9	11.69%
Total	77	100.00%



Demographic Characteristics of Juvenile Hall Detainees
on 5/31/2013
Age by Gender

Age	Female	Male	Total	
11	0	0	0	0.00%
12	0	2	2	2.60%
13	1	3	4	5.19%
14	2	6	8	10.39%
15	1	15	16	20.78%
16	2	12	14	18.18%
17	3	21	24	31.17%
18 and over	2	7	9	11.69%
Total	11	66	77	100.00%
	14.29%	85.71%	100.00%	



Demographic Characteristics
Of Juvenile Hall Detainees on May 31st, 2013

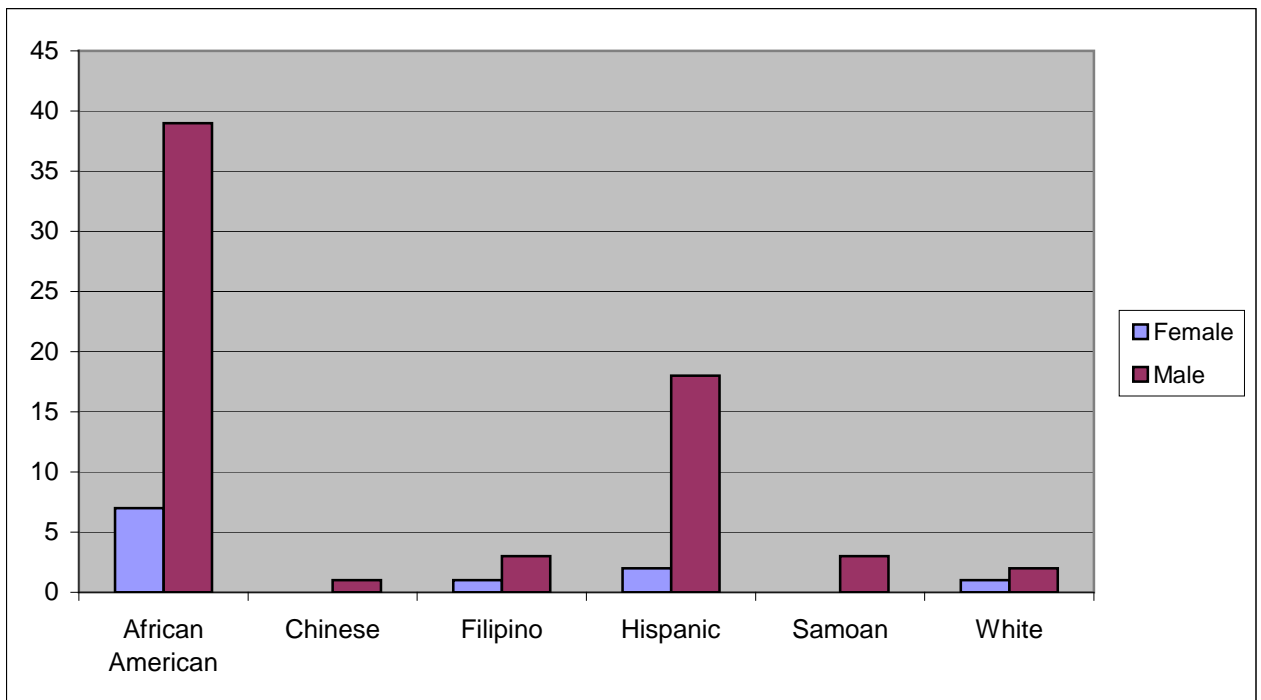
Geographic Residence of Youth	Count	%
Richmond	2	2.6%
Marina	0	0.0%
North of Market/Downtown	0	0.0%
Treasure Island/Yerba Buena Island	2	2.6%
Western Addition	7	9.1%
South of Market/Tenderloin	3	3.9%
Sunset	0	0.0%
Haight Ashbury/Castro/Upper Market	0	0.0%
Inner Mission	6	7.8%
Potrero	3	3.9%
Parkside	0	0.0%
Ingleside (West of Twin Peaks)	4	5.2%
Outer Mission	11	14.3%
Bayview	18	23.4%
Non-San Francisco and Unavailable	21	27.3%
Total	77	100.0%

Non-San Francisco and Unavailable	Count	%
Antioch	1	4.8%
Bay Point	1	4.8%
Daly City	2	9.5%
El Sobrante	1	4.8%
Grass Valley	1	4.8%
Hayward	1	4.8%
Marin City	1	4.8%
Milbrae	1	4.8%
Oakland	3	14.3%
Pacifica	1	4.8%
Sacramento	1	4.8%
San Jose	1	4.8%
Vallejo	2	9.5%
Unavailable	4	19.0%
Total	21	100.0%

Demographic Characteristics
Of Juvenile Hall Detainees on May 31st, 2013

Race/Ethnic Origin by Gender

Race/Ethnicity	Female	Male	Total	%
African American	7	39	46	59.7%
Chinese	0	1	1	1.3%
Filipino	1	3	4	5.2%
Hispanic	2	18	20	26.0%
Samoan	0	3	3	3.9%
White	1	2	3	3.9%
Total	11	66	77	100.0%

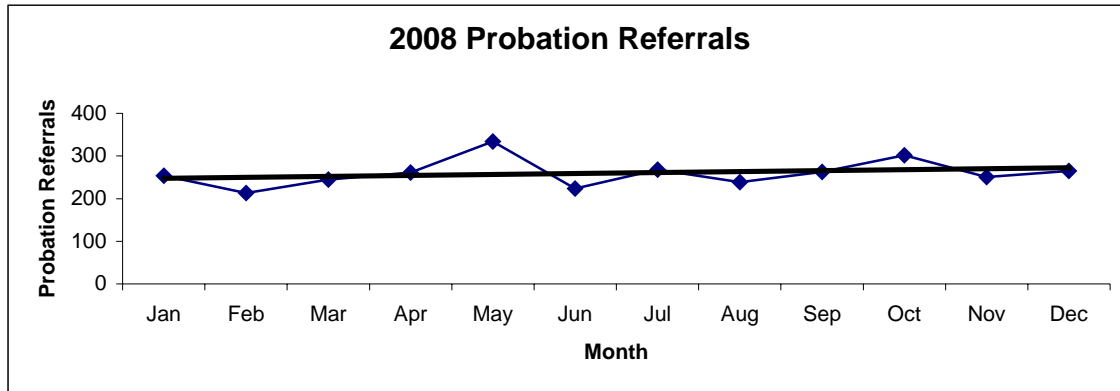


Section IV

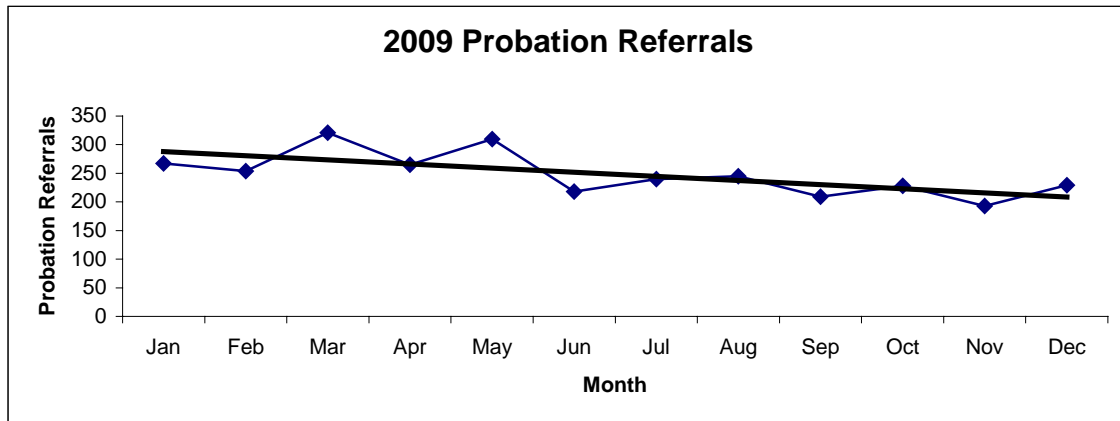
Historical Information

San Francisco Juvenile Probation Department
Probation Referrals (all sources) By Month
 (2008-2010)

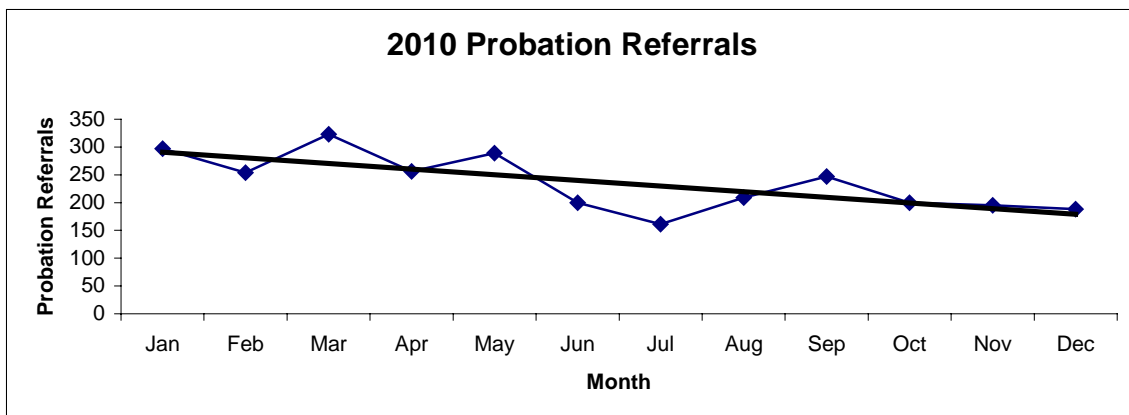
2008 Probation Referrals	Jan	Feb	Mar	Apr	May	Jun	Jul	Aug	Sep	Oct	Nov	Dec	Total
	254	213	245	261	334	224	268	239	263	302	251	265	3119



2009 Probation Referrals	Jan	Feb	Mar	Apr	May	Jun	Jul	Aug	Sep	Oct	Nov	Dec	Total
	267	254	321	265	310	218	240	245	209	228	193	229	2979

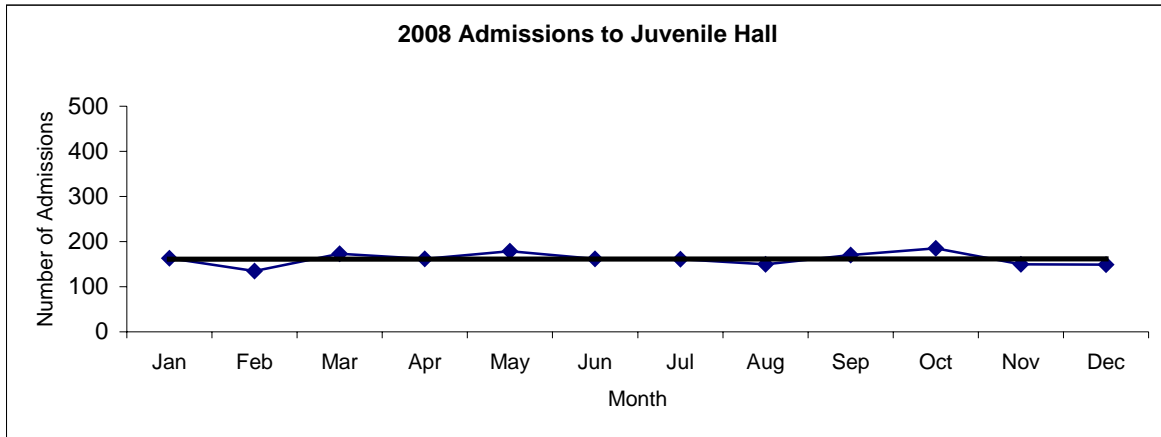


2010 Probation Referrals	Jan	Feb	Mar	Apr	May	Jun	Jul	Aug	Sep	Oct	Nov	Dec	Total
	297	254	323	256	289	200	161	209	247	200	195	188	2819

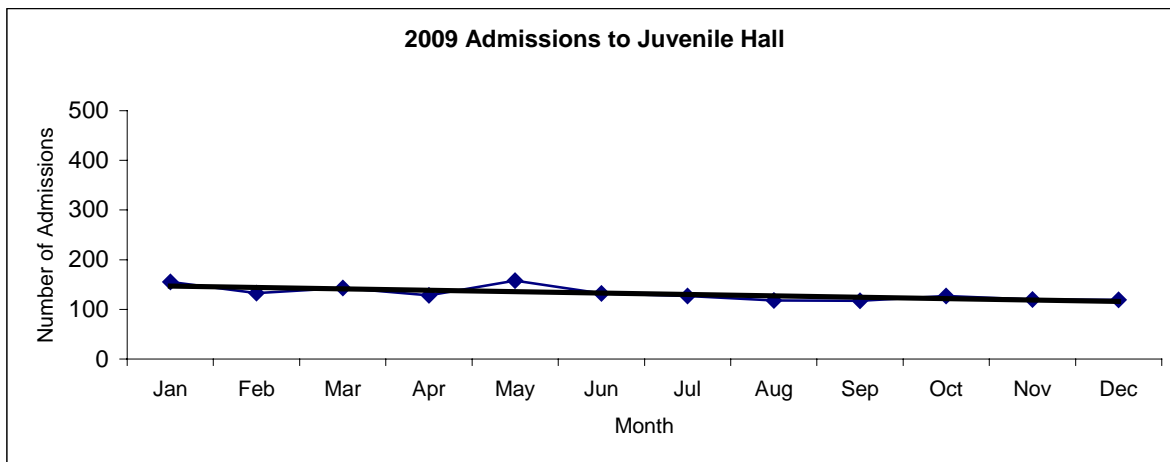


San Francisco Juvenile Probation
Juvenile Hall Admissions By Month
(2008-2010)

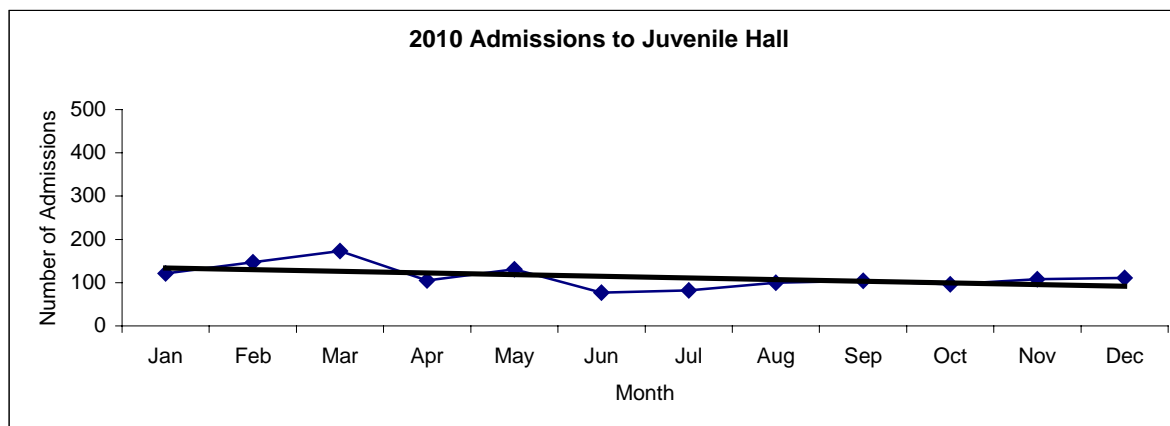
2008 Admissions	Jan	Feb	Mar	Apr	May	Jun	Jul	Aug	Sep	Oct	Nov	Dec	Total
	163	135	173	162	179	162	161	150	170	185	150	149	1939



2009 Admissions	Jan	Feb	Mar	Apr	May	Jun	Jul	Aug	Sep	Oct	Nov	Dec	Total
	155	133	143	128	158	132	127	118	117	127	120	119	1577

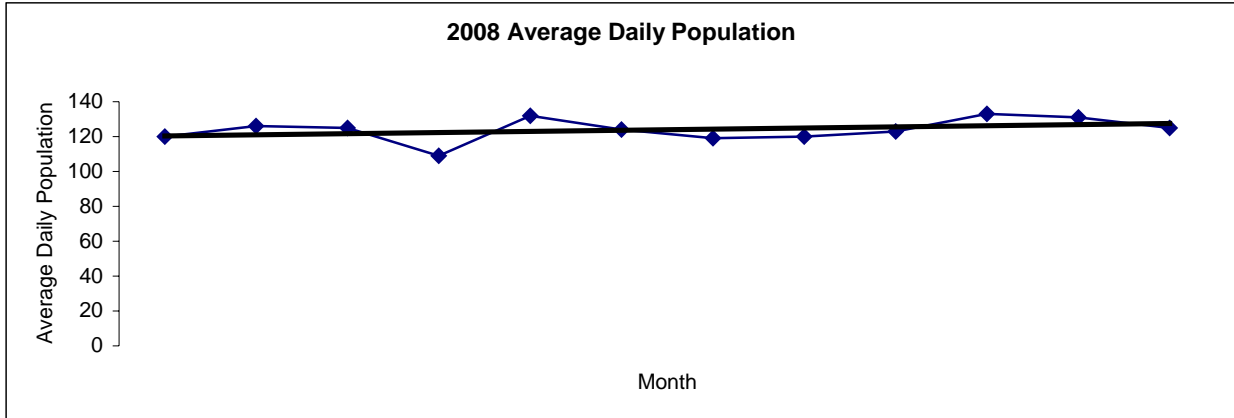


2010 Admissions	Jan	Feb	Mar	Apr	May	Jun	Jul	Aug	Sep	Oct	Nov	Dec	Total
	121	147	173	105	131	77	82	100	104	96	108	111	1355

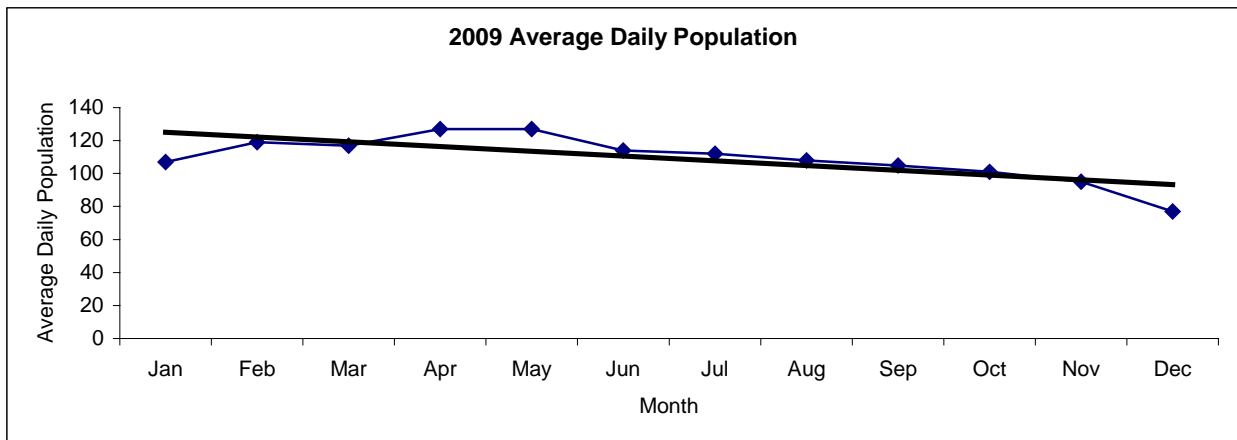


San Francisco Juvenile Probation
Juvenile Hall Average Daily Population By Month
 (2008-2010)

2008 Avg. Daily Pop.	Jan	Feb	Mar	Apr	May	Jun	Jul	Aug	Sep	Oct	Nov	Dec	Total
	120	126	125	109	132	124	119	120	123	133	131	125	124



2009 Avg. Daily Pop.	Jan	Feb	Mar	Apr	May	Jun	Jul	Aug	Sep	Oct	Nov	Dec	Total
	107	119	117	127	127	114	112	108	105	101	95	77	109



2010 Avg. Daily Pop.	Jan	Feb	Mar	Apr	May	Jun	Jul	Aug	Sep	Oct	Nov	Dec	Total
	85	104	110	107	99	97	90	88	90	84	79	92	94

