

City and County of San Francisco



Juvenile Probation Department

---

**Monthly Report for August 2013**

Presented to the Juvenile Probation Commission

September 11<sup>th</sup>, 2013

Allen A. Nance  
Chief Probation Officer

Prepared by Jose Luis Perla  
Information Technology Director  
(415) 753-7686  
jose.perla@sfgov.org

# Table of Contents

---

## Section I Summary Reports

Juvenile Hall, Log Cabin Ranch Summary Statistics .....	1
Probation Services Summary and California Youth Authority Statistics.....	2
Active Cases by Units.....	3

## Section II Current Month General Detail

Probation Referrals, Juvenile Admissions And Average Daily Population .....	4
Juvenile Hall Admissions and Average Daily Population.....	5
Commitments to out-of-home placement .....	6
Commitments to California Youth Authority .....	7
Log Cabin Ranch Admissions and Average Daily Population.....	8
Probation Referrals .....	9
Juvenile Hall And Log Cabin Ranch Incident Report .....	10
Bay Area Resident Juvenile Hall Comparison .....	11
Juvenile Hall Admissions .....	12
Juvenile Hall Detainees by Detention Reason.....	13
Juvenile Hall Average Daily Population by Rated Capacity .....	14
Juvenile Hall Average Length of Stay .....	15

## Section III Demographics

Juvenile Hall Detainees by Sex and Race/Ethnic Origin.....	16
Juvenile Hall Detainees by Age.....	17
Juvenile Hall Detainees by Age and Sex .....	18
Juvenile Hall Detainees by Geographic Residence of Youth.....	19
Juvenile Hall Detainees by Race/Ethnic Origin and Sex.....	20

**Section IV**  
**Historical Information**

2004-2006 Probation Referrals .....21  
2004-2006 Juvenile Hall Admissions .....22  
2004-2006 Juvenile Hall Average Daily Population .....23



# **Section I**

# **Summary Reports**

## Summary Report for the Month of August 2013

<b>Juvenile Hall</b>	<i>July 2012</i>	<i>July 2013</i>	<i>August 2012</i>	<i>August 2013</i>	<i>YTD 2012</i>	<i>YTD 2013</i>
Admissions	85	90	75	74	623	641
Average Daily Population	83	81	74	74	74	77
Average Length of Stay (Releases)	38	22.44	31	31.75	28.31	28.79
Average Length of Stay (In Custody)	69.38	52.13	57.47	53.03	68.37	60.26
Releases	92	81	75	81	629	786
<b>Log Cabin Ranch</b>						
Admissions:						
First Time Commitments	8	2	3	1	25	14
Recommitments	0	0	0	0	0	0
<i>Total</i>	<b>8</b>	<b>2</b>	<b>3</b>	<b>1</b>	<b>25</b>	<b>14</b>
Releases:						
Graduated	0	0	0	0	1	0
Escape	0	1	0	0	1	1
Other releases	0	2	8	5	24	16
<i>Total</i>	<b>0</b>	<b>3</b>	<b>8</b>	<b>5</b>	<b>26</b>	<b>17</b>
Average Daily Population	15	14	21	10	18	15

## Summary Report for the Month of August 2013

<b>Probation Services</b>	<i>July 2013</i>	<i>August 2013</i>	<i>Year To Date 2013</i>
Probation Referrals	131	117	1131
Total Petitions including violation of probation	84	47	551
Selected Court Dispositions:			
California Youth Authority	0	0	3
Log Cabin Ranch	1	3	14
Out of Home Placement	9	12	70
Ward Probation	20	25	162
Non-Ward Probation (725a WI)	4	5	30
Informal Probation (654 WI)	11	7	52
Violation of Probation Petitions Filed	11	9	71
<b>California Youth Authority Monthly Count San Francisco County Juvenile Court Cases August 31<sup>st</sup>, 2013</b>			
Category	Institutions	Parole	
<b>Males</b>			
White	0	0	
Hispanic	3	0	
African American	4	0	
Asian	1	0	
Native American	0	0	
Filipino	0	0	
Pacific Islander	0	0	
Other	0	0	
<b>Total</b>	<b>8</b>	<b>0</b>	
<b>Females</b>			
White	0	0	
Hispanic	0	0	
African American	0	0	
Asian	0	0	
Native American	0	0	
Filipino	0	0	
Pacific Islander	0	0	
Other	0	0	
<b>Total</b>	<b>0</b>	<b>0</b>	
<b>Grand Total</b>	<b>8</b>	<b>0</b>	

## Summary Report for the Month of August 2013

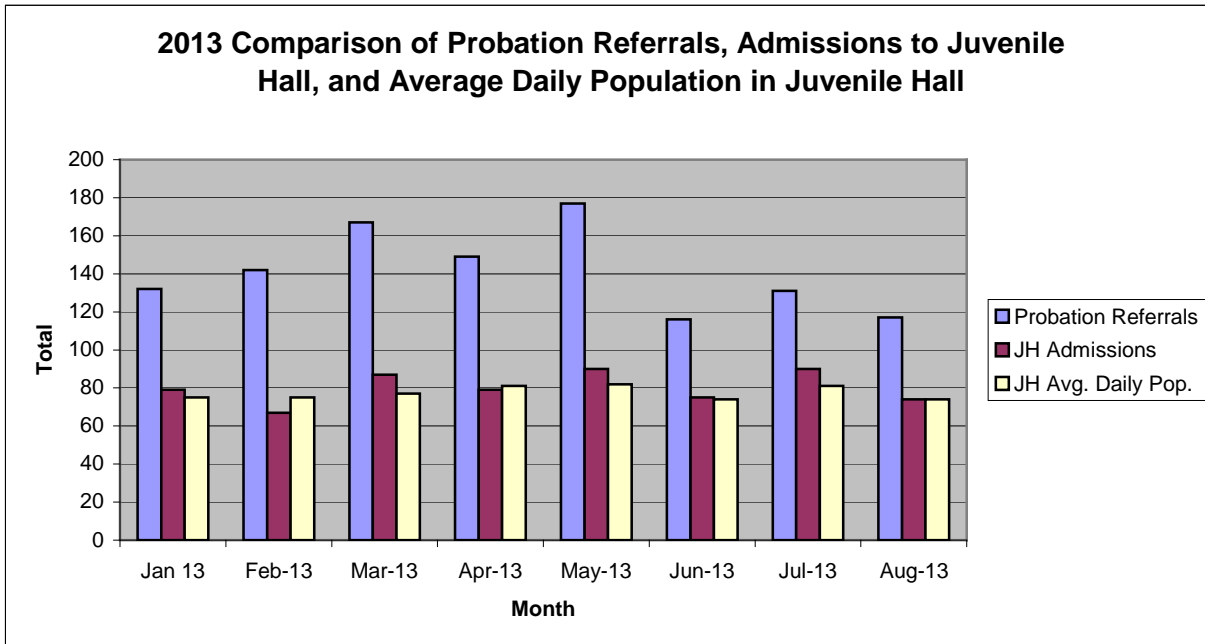
<b>Probation Services</b>			
<b>Active Cases by Units</b>	July 2013	August 2013	August Average # Youth by PO
CARC	134	127	127
Intake Green (Custody Screening Investigation)	98	77	11
Intake Gold (Probation Services 1)	170	134	19
Family Integrated Treatment Services (FITS) PS2	117	128	18
Serious Offenders Program (Probation Services 3)	154	151	22
Out-of-home Placement (Probation Services 4)	147	151	25
Juvenile Collaborative Re-entry Unit (JCRU)	46	49	16
<i>Total</i>	<b>866</b>	<b>817</b>	<b>34</b>
Total Active Intake Cases	410	364	
Total Probation/Supervision Cases	456	453	
<i>Total</i>	<b>866</b>	<b>817</b>	

**Section II**  
**Current Month**  
**General Detail**



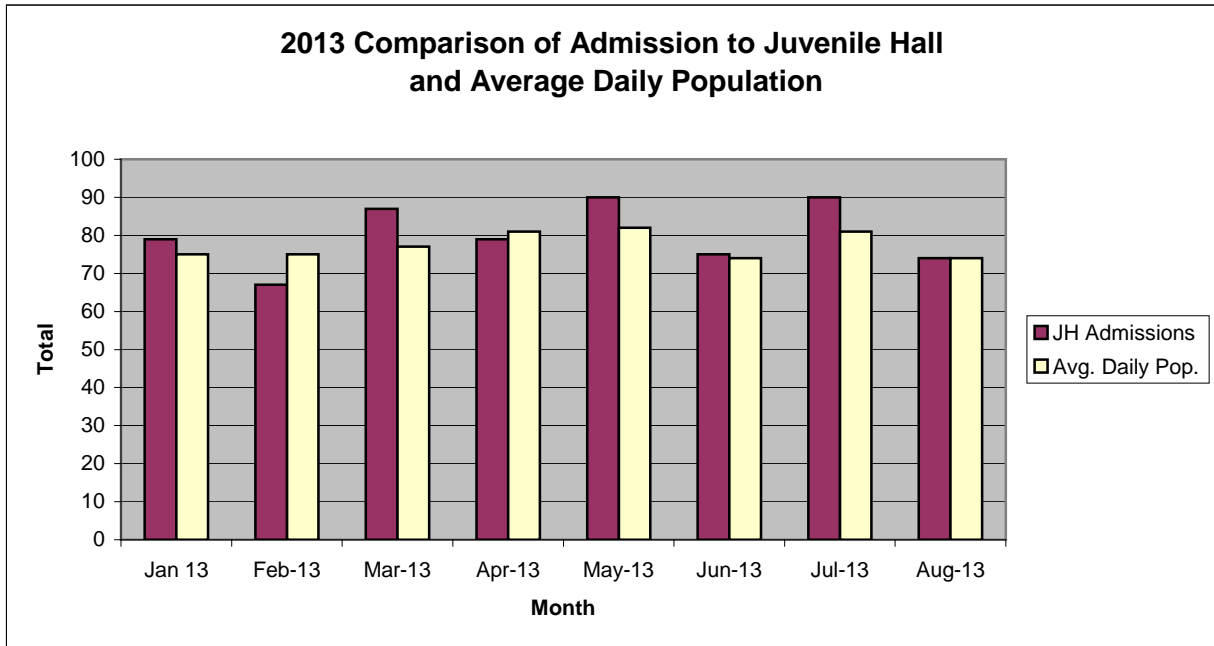
## San Francisco Juvenile Probation Department

	Jan 13	Feb-13	Mar-13	Apr-13	May-13	Jun-13	Jul-13	Aug-13	Sep-13	Oct-13	Nov-13	Dec-13
Probation Referrals	132	142	167	149	177	116	131	117				
JH Admissions	79	67	87	79	90	75	90	74				
JH Avg. Daily Pop.	75	75	77	81	82	74	81	74				



## San Francisco Juvenile Probation Department

	Jan 13	Feb-13	Mar-13	Apr-13	May-13	Jun-13	Jul-13	Aug-13	Sep-13	Oct-13	Nov-13	Dec-13
JH Admissions	79	67	87	79	90	75	90	74				
Avg. Daily Pop.	75	75	77	81	82	74	81	74				

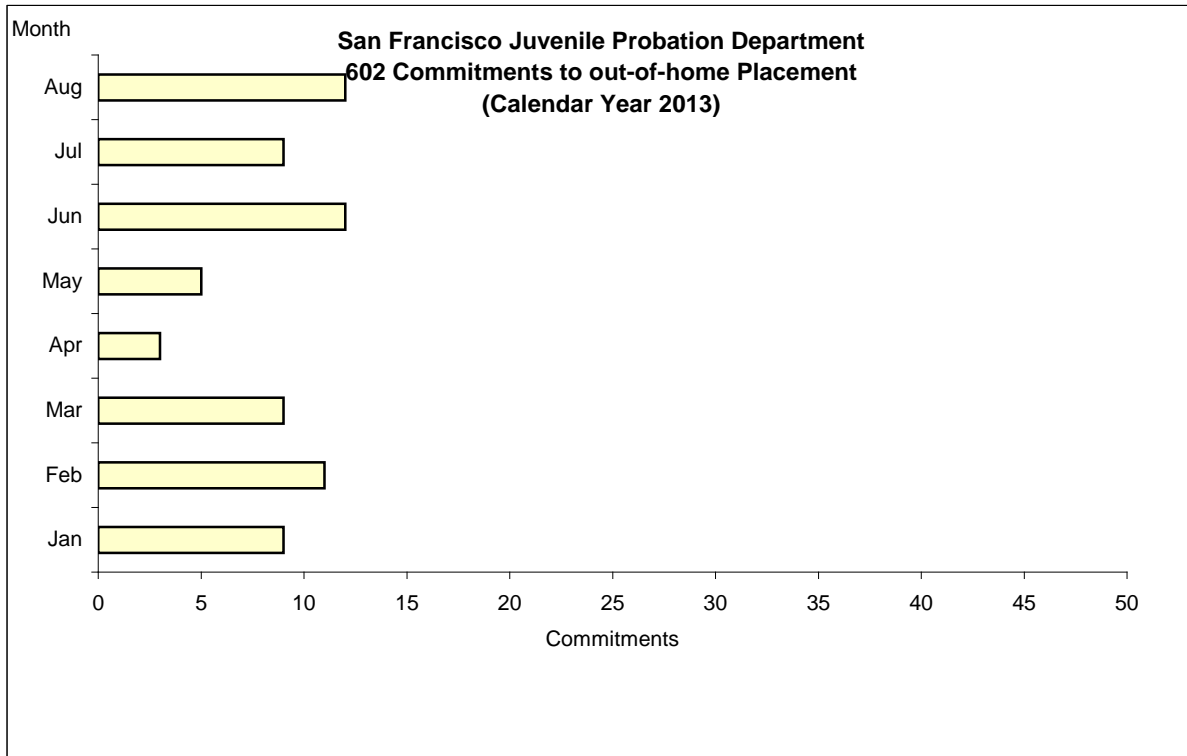


# Out-of-Home Placement<sup>1</sup>

## Commitments of 602's

### Calendar Year 2013

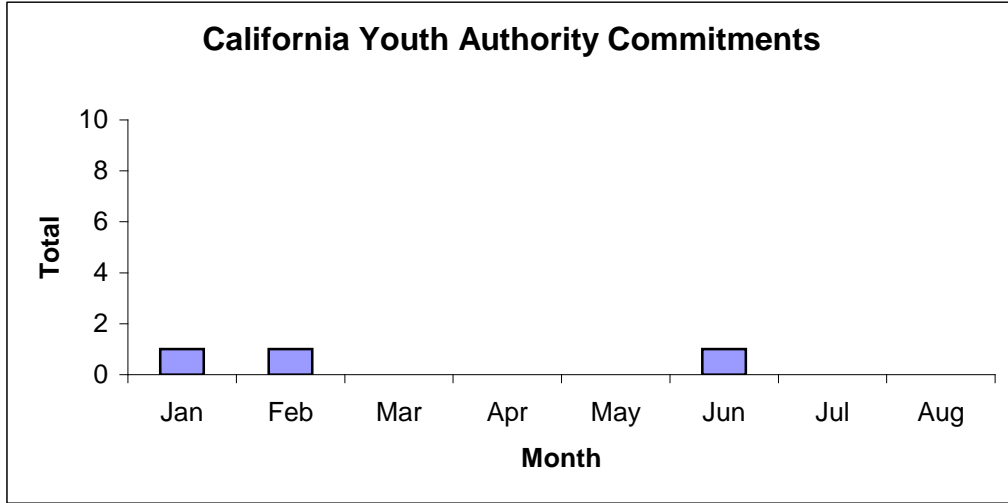
Commitments	Jan	Feb	Mar	Apr	May	Jun	Jul	Aug	Sep	Oct	Nov	Dec	Total
2013	9	11	9	3	5	12	9	12					<b>70</b>



<sup>1</sup> This report is based on 602 Commitments to out-of-home placements. If there is a 601 commitment, it will show as a footnote here. Figures are regularly updated to include reports from previous reporting periods.

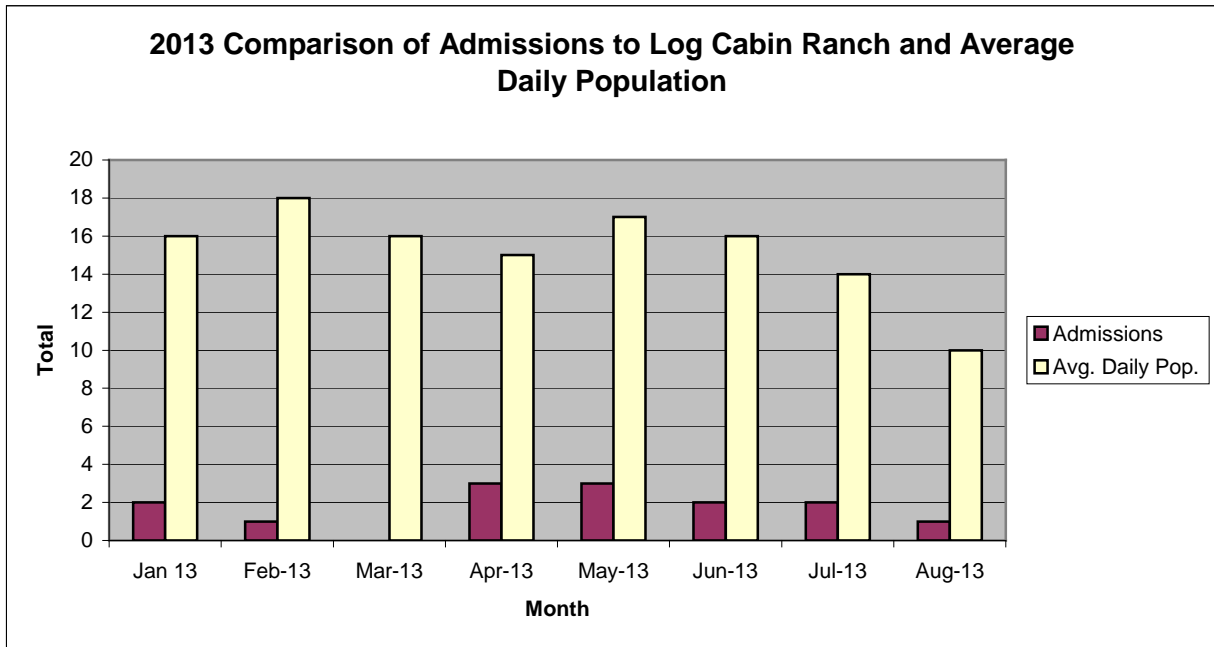
California Youth Authority  
 Commitments  
 (Calendar Year 2013)

Commitments	Jan	Feb	Mar	Apr	May	Jun	Jul	Aug	Sep	Oct	Nov	Dec	Total
2013	1	1	0	0	0	1	0	0					3



## San Francisco Juvenile Probation Department

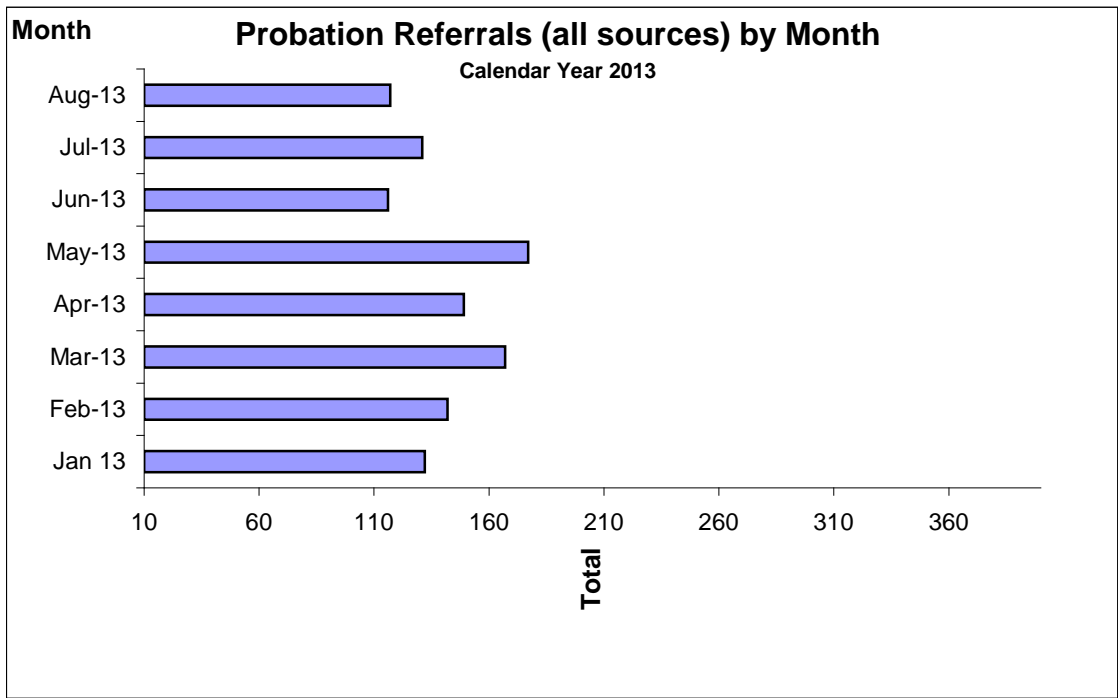
	Jan 13	Feb-13	Mar-13	Apr-13	May-13	Jun-13	Jul-13	Aug-13	Sep-13	Oct-13	Nov-13	Dec-13
Admissions	2	1	0	3	3	2	2	1				
Avg. Daily Pop.	16	18	16	15	17	16	14	10				



## Probation Referrals by Month Calendar Year 2013

### Probation Referrals (all sources) by Month (602 W&I)

Jan 13	132
Feb-13	142
Mar-13	167
Apr-13	149
May-13	177
Jun-13	116
Jul-13	131
Aug-13	117
Sep-13	
Oct-13	
Nov-13	
Dec-13	

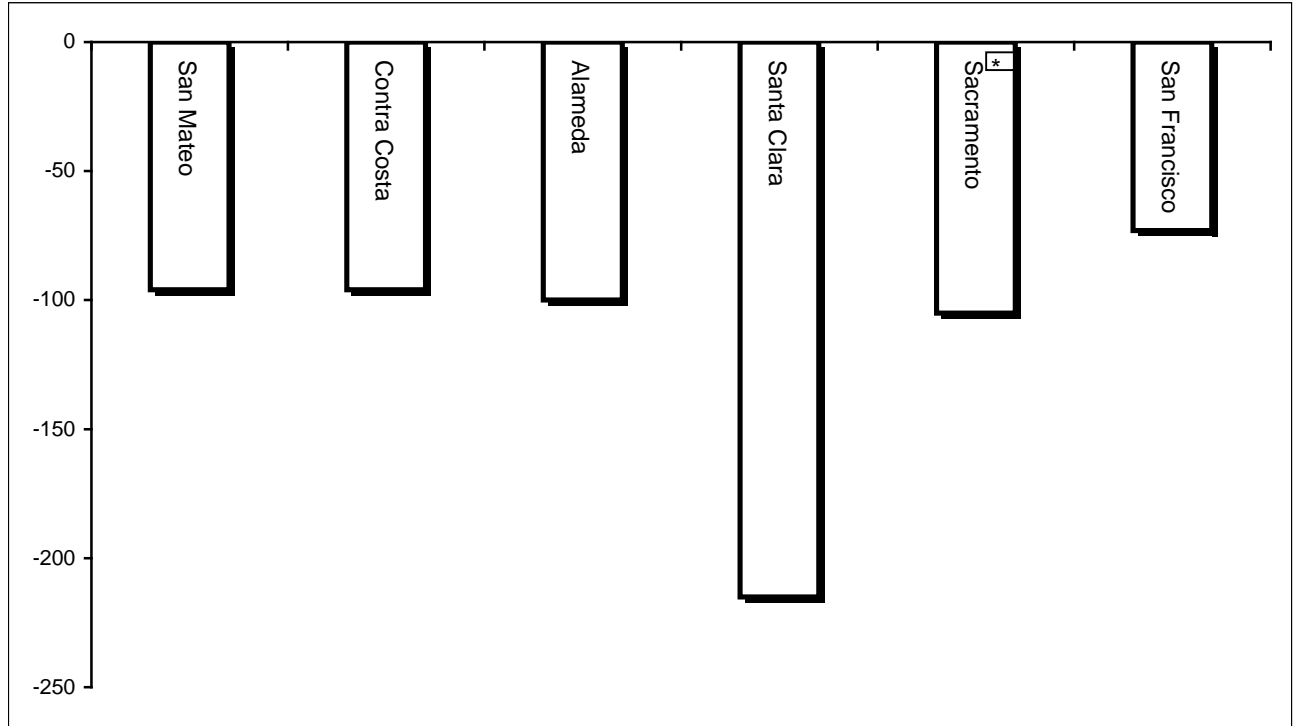


San Francisco Juvenile Probation Department  
 Monthly Incident Report Form  
 August 2013

<b>Juvenile Hall</b>	Battery on Staff	Injury to Staff Due to Restrain of Minor	Fights Minor on Minor	Battery Youth on Youth	Attempted Escape	AWOL	Attempted Suicide	Serious Contraband (Weapon illegal drug)	Use of Force	Self Inflicted Injuries
	<b>0</b>	<b>0</b>	<b>5</b>	<b>5</b>	<b>0</b>	<b>0</b>	<b>0</b>	<b>3</b>	<b>1</b>	<b>1</b>
	Assaults Minor on Minor	Battery on Staff with Injury	Fire	Fight with Injury	Battery Youth on Youth with Injury	Escape	Death	Suicide	Major Property Destruction	Use of Restraints (Handcuffs/ Shackles)
<b>0</b>	<b>0</b>	<b>0</b>	<b>0</b>	<b>0</b>	<b>0</b>	<b>0</b>	<b>0</b>	<b>0</b>	<b>0</b>	<b>0</b>
<b>Log Cabin Ranch</b>	Battery on Staff	Injury to Staff due to Restraint of Minor	Fight	Battery Youth on Youth	Attempted Escape	AWOL	Attempted Suicide	Serious Contraband	Battery on Staff with Injury	Fire
	<b>0</b>	<b>0</b>	<b>0</b>	<b>0</b>	<b>0</b>	<b>1</b>	<b>0</b>	<b>0</b>	<b>0</b>	<b>0</b>
	Fight With Injury	Battery Youth on Youth with Injury	Escape	Death	Suicide	Major Property Destruction				
<b>0</b>	<b>0</b>	<b>1</b>	<b>0</b>	<b>0</b>	<b>0</b>					

## Bay Area Resident Juvenile Hall Comparison Over/Under Capacity

September 5<sup>th</sup>, 2013

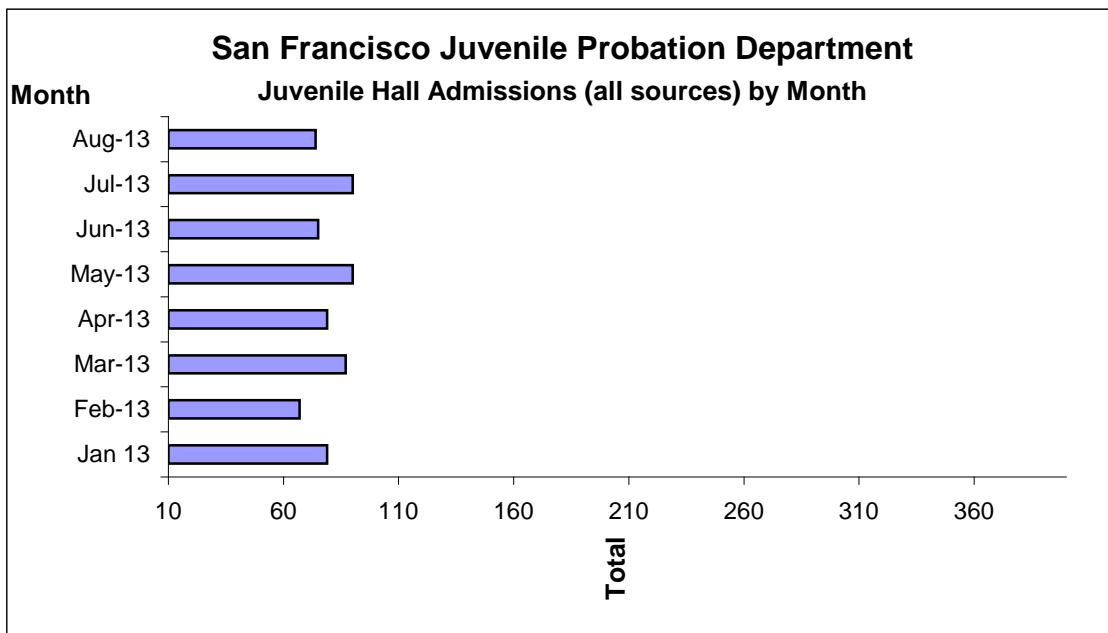


	Rated Capacity	Actual	Over/Under Capacity
San Mateo	180	84	-96
Contra Costa	240	144	-96
Alameda	280	180	-100
Santa Clara	360	145	-215
Sacramento	308	203	-105
San Francisco	150	77	-73



## Juvenile Hall Admissions by Month Calendar Year 2013

Jan 13	79
Feb-13	67
Mar-13	87
Apr-13	79
May-13	90
Jun-13	75
Jul-13	90
Aug-13	74
Sep-13	
Oct-13	
Nov-13	
Dec-13	

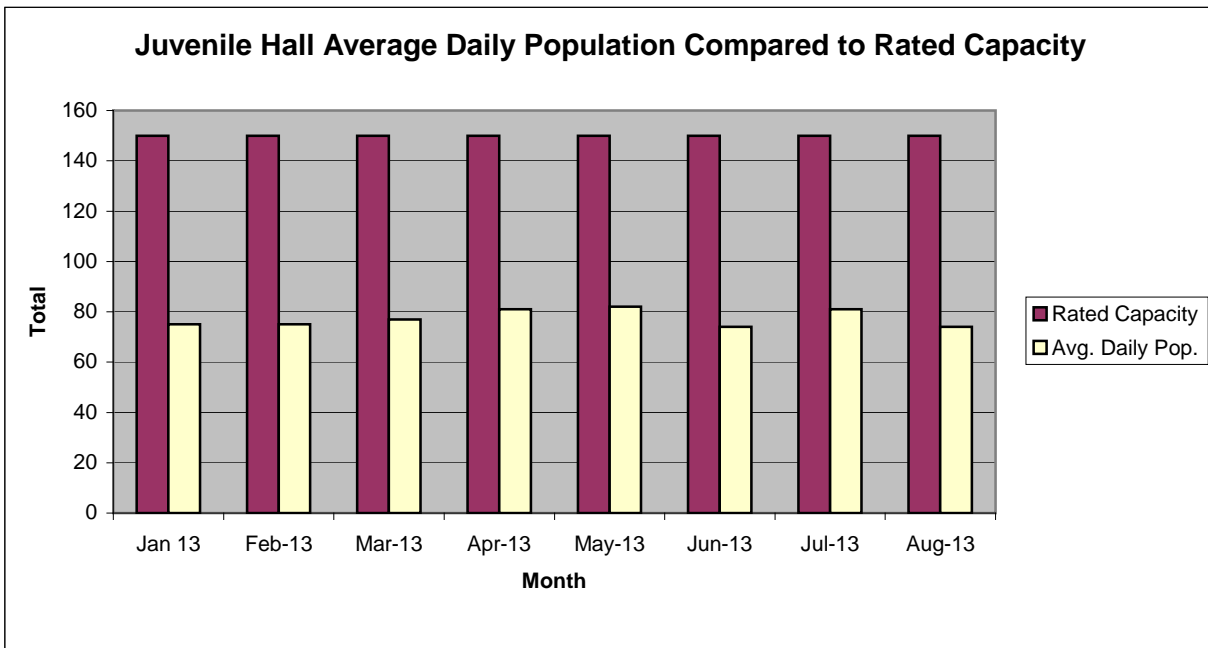


**Characteristics of Juvenile Hall Detainees on August 31<sup>st</sup>, 2013**

Referral Reason	MF*	Literal	Count	%
187 (A) PC	F	MURDER	4	5.06%
664 /187 (A) PC	F	ATTEMPTED MURDER	2	2.53%
211 PC	F	ROBBERY	19	24.05%
11352 (A) HS	F	TRANSPORT/SELL NARCOTIC/CONTROLLED SUBSTANCE	1	1.27%
459 PC	F	BURGLARY	1	1.27%
4502 (A) PC	F	PRISONER POSSESS WEAPON	1	1.27%
245 (A)(2) PC	F	ASSAULT WITH FIREARM ON PERSON	1	1.27%
245 (A) PC	F	ASSAULT:DEADLY WEAPON OR FORCE:POSSIBLE GREAT BODILY INJ	1	1.27%
245 (A)(1) PC	F	ASSAULT W/DEADLY WEAPON:NOT F/ARM	4	5.06%
243 (D) PC	F	BATTERY W/SERIOUS BODILY INJURY	1	1.27%
11359 HS	F	POSSESS MARIJUANA FOR SALE	1	1.27%
29800 (A)(1) PC	F	FELON/ADDICT/POSSESS/ETC FIREARM	1	1.27%
25400 (A)(1) PC	F	CARRY CONCEALED WEAPON IN VEHICLE	1	1.27%
422 PC	F	THREATEN CRIME W/INTENT TO TERRORIZE	1	1.27%
460 (B) PC	F	BURGLARY:SECOND DEGREE	1	1.27%
25400 (A)(2) PC	F	CARRY CONCEALED WEAPON ON PERSON	1	1.27%
21310 PC	F	CARRY CONCEALED DIRK OR DAGGER	1	1.27%
594 (B)(1) PC	F	VANDALISM (\$400 OR MORE)	1	1.27%
148 (A)(1) PC	M	OBSTRUCT/RESIST/ETC PUBLIC/PEACE OFFICER/EMERGENCY MED TECH	2	2.53%
245 (A)(1) PC	M	ASSAULT W DEADLY WEAPON:NOT F/ARM	1	1.27%
459 PC	M	BURGLARY	1	1.27%
871 (A) WI	M	MINOR ATTEMPT ESCAPE/ESCAPE COUNTY FACILITY	1	1.27%
242 PC	M	BATTERY	1	1.27%
777 (A)(2) WI	M	FAIL TO OBEY ORDER OF JUVENILE COURT:602 WI	2	2.53%
602 MP	M	POSSESSION OF BB GUN	1	1.27%
628.1 WI	M	VIOLATION(S) OF HOME SUPERVISION CONDITION	4	5.06%
737 WI	M	CHANGE OF PLACEMENT/PLACEMENT FAILURE	2	2.53%
WRNT602	X	ARREST WARRANT	14	17.72%
BENCH WARRANT	X	BENCH WARRANT	2	2.53%
WRNTOC XX	X	WARRANT FROM ANOTHER COUNTY	1	1.27%
CTORD 602 XX	X	COURT ORDER 602	4	5.06%
*M=Misdemeanor, F=Felony			Total	79 100.00%

## San Francisco Juvenile Probation Department

	Jan 13	Feb-13	Mar-13	Apr-13	May-13	Jun-13	Jul-13	Aug-13	Sep-13	Oct-13	Nov-13	Dec-13
Rated Capacity	150	150	150	150	150	150	150	150				
Avg. Daily Pop.	75	75	77	81	82	74	81	74				



## Juvenile Hall Average Length of Stay

For the Month of August 2013

### <sup>1</sup>Released

<b>Range of Days</b>	<i>1-10 days</i>	<i>11-20 days</i>	<i>21-30 days</i>	<i>30 or more days</i>	<b>Total</b>
# of Youth Released	30	17	12	22	81
% of Population	37.04%	20.99%	14.81%	27.16%	100%
# of Days	127	245	305	1,895	2,572
% of Total Days	4.94%	9.53%	11.86%	73.68%	100%
Average Length of Stay	4.23	14.41	25.42	86.14	31.75

### <sup>2</sup>In Custody

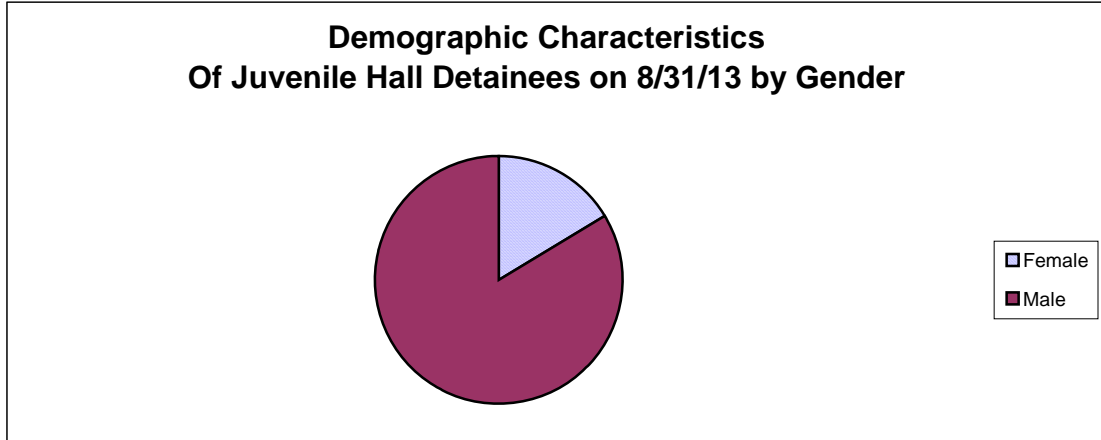
<b>Range of Days</b>	<i>1-10 days</i>	<i>11-20 days</i>	<i>21-30 days</i>	<i>30 or more days</i>	<b>Total</b>
# of Youth Detained	29	8	8	34	79
% of Population	36.71%	10.13%	10.13%	43.04%	100%
# of Days	135	131	200	3,723	4,189
% of Total Days	3.22%	3.13%	4.77%	88.88%	100%
Average Length of Stay	4.66	16.38	25.00	109.50	53.03

Notes: Less than one day of stay is calculated as one day.

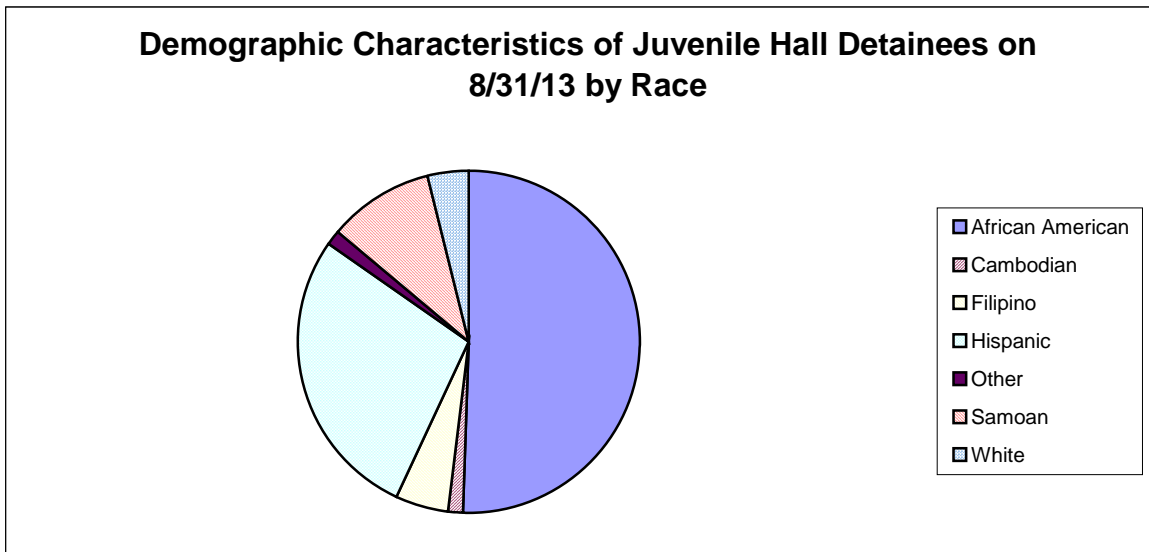
<sup>1</sup>Length of stay is calculated according to release date for those who are released.

<sup>2</sup>For those still in custody, length of stay is calculated at the last day of the month.

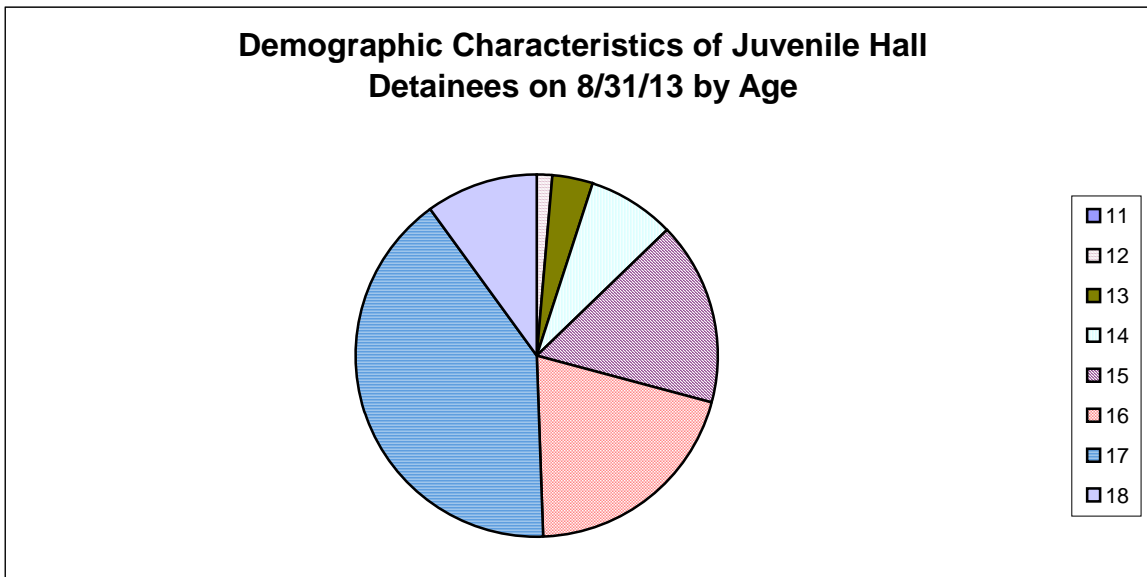
Gender	Frequency	Percent
Female	13	16.46%
Male	66	83.54%
<b>Total</b>	<b>79</b>	<b>100.00%</b>



Race/Ethnic Origin	Frequency	Percent
African American	40	50.63%
Cambodian	1	1.27%
Filipino	4	5.06%
Hispanic	22	27.85%
Other	1	1.27%
Samoan	8	10.13%
White	3	3.80%
<b>Total</b>	<b>79</b>	<b>100.00%</b>

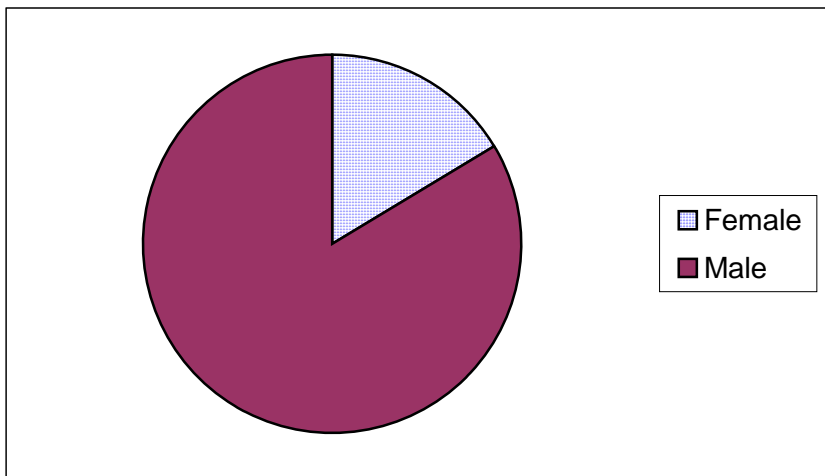


Age	Frequency	Percent
11	0	0.00%
12	1	1.27%
13	3	3.80%
14	6	7.59%
15	13	16.46%
16	16	20.25%
17	32	40.51%
18	8	10.13%
<b>Total</b>	<b>79</b>	<b>100.00%</b>



Demographic Characteristics of Juvenile Hall Detainees  
on 8/31/2013  
Age by Gender

Age	Female	Male	Total	
11	0	0	0	0.00%
12	1	0	1	1.27%
13	0	3	3	3.80%
14	1	5	6	7.59%
15	2	11	13	16.46%
16	4	12	16	20.25%
17	5	27	32	40.51%
18 and over	0	8	8	10.13%
<b>Total</b>	<b>13</b>	<b>66</b>	<b>79</b>	<b>100.00%</b>
	<b>16.46%</b>	<b>83.54%</b>	<b>100.00%</b>	



Demographic Characteristics  
Of Juvenile Hall Detainees on August 31<sup>st</sup>, 2013

---

<b>Geographic Residence of Youth</b>	<b>Count</b>	<b>%</b>
Richmond	0	0.0%
Marina	1	1.3%
North of Market/Downtown	1	1.3%
Treasure Island/Yerba Buena Island	4	5.1%
Western Addition	4	5.1%
South of Market/Tenderloin	2	2.5%
Sunset	0	0.0%
Haight Ashbury/Castro/Upper Market	1	1.3%
Inner Mission	4	5.1%
Potrero	3	3.8%
Parkside	0	0.0%
Ingleside (West of Twin Peaks)	5	6.3%
Outer Mission	19	24.1%
Bayview	20	25.3%
Non-San Francisco and Unavailable	15	19.0%
<b>Total</b>	<b>79</b>	<b>100.0%</b>

<b>Non-San Francisco and Unavailable</b>	<b>Count</b>	<b>%</b>
Daly City	1	6.7%
Grass Valley	2	13.3%
Oakland	4	26.7%
Sacramento	2	13.3%
San Jose	1	6.7%
Turklock	1	6.7%
Vallejo	1	6.7%
Unavailable	3	20.0%
<b>Total</b>	<b>15</b>	<b>100.0%</b>

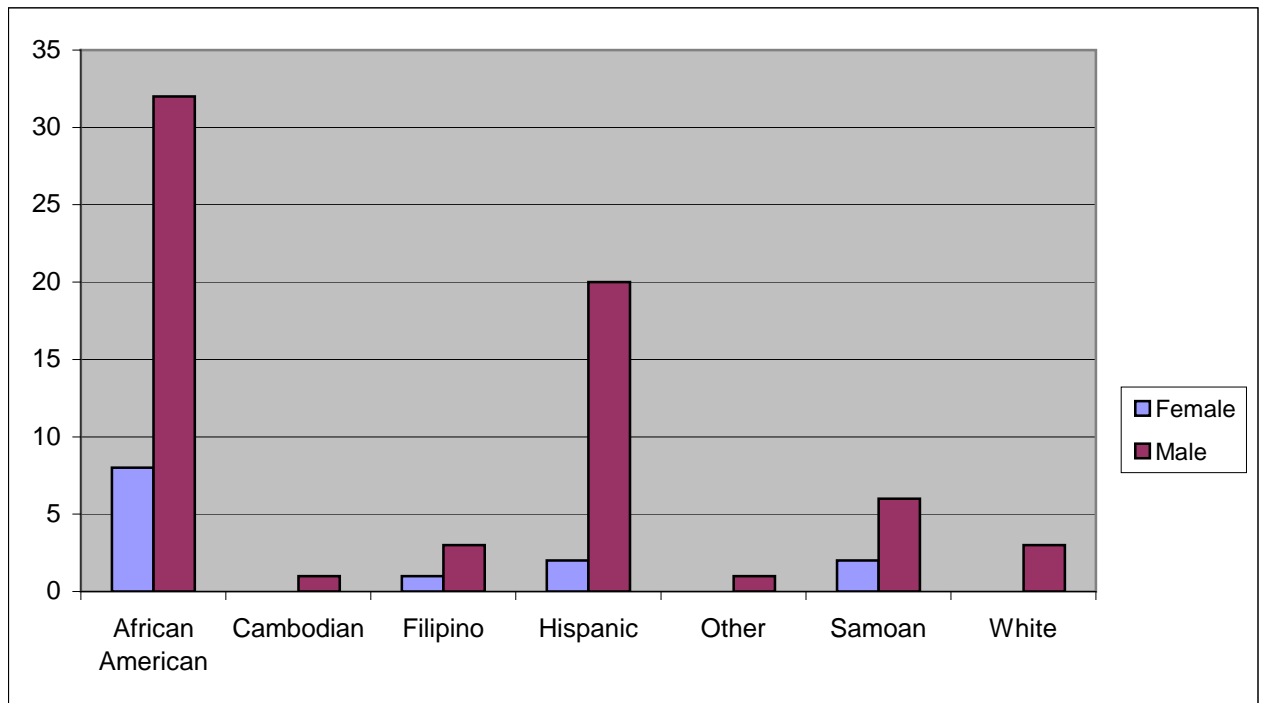


Demographic Characteristics  
Of Juvenile Hall Detainees on August 31<sup>st</sup>, 2013

---

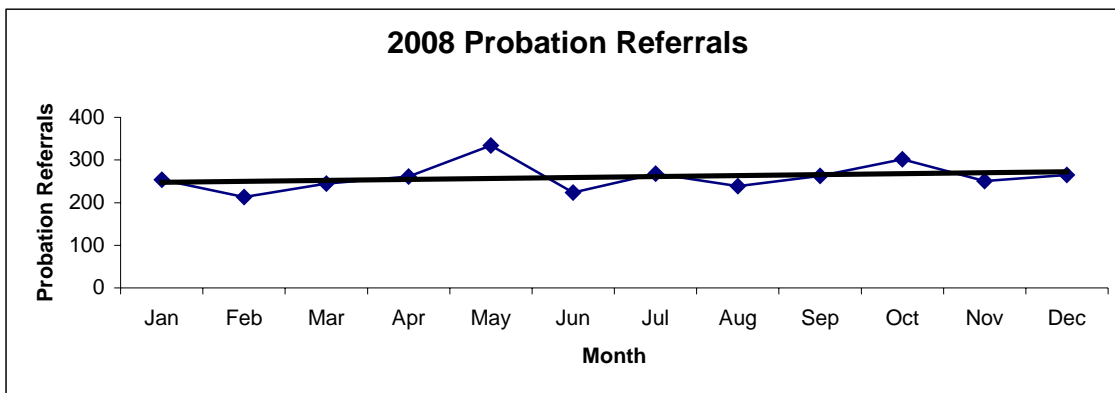
**Race/Ethnic Origin by Gender**

Race/Ethnicity	Female	Male	Total	%
African American	8	32	40	50.6%
Cambodian	0	1	1	1.3%
Filipino	1	3	4	5.1%
Hispanic	2	20	22	27.8%
Other	0	1	1	1.3%
Samoan	2	6	8	10.1%
White	0	3	3	3.8%
<b>Total</b>	<b>13</b>	<b>66</b>	<b>79</b>	<b>100.0%</b>

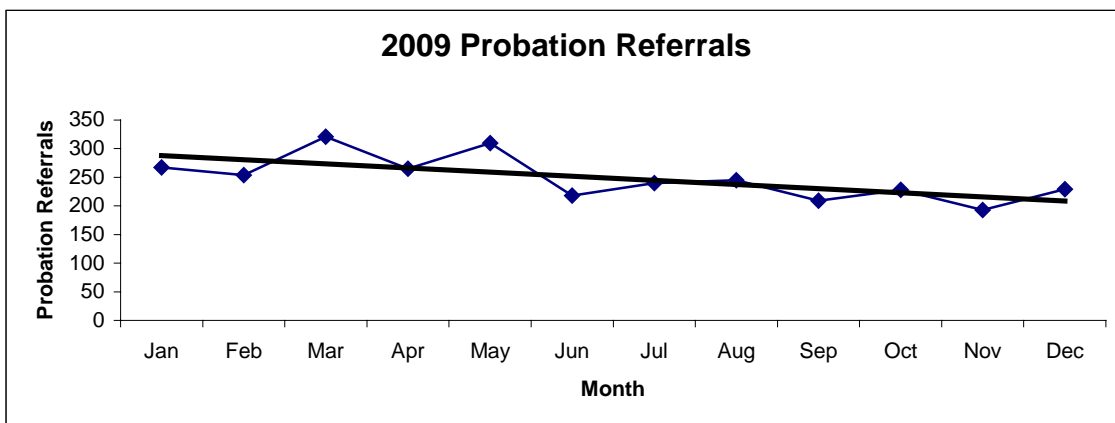


**San Francisco Juvenile Probation Department**  
**Probation Referrals (all sources) By Month**  
(2008-2010)

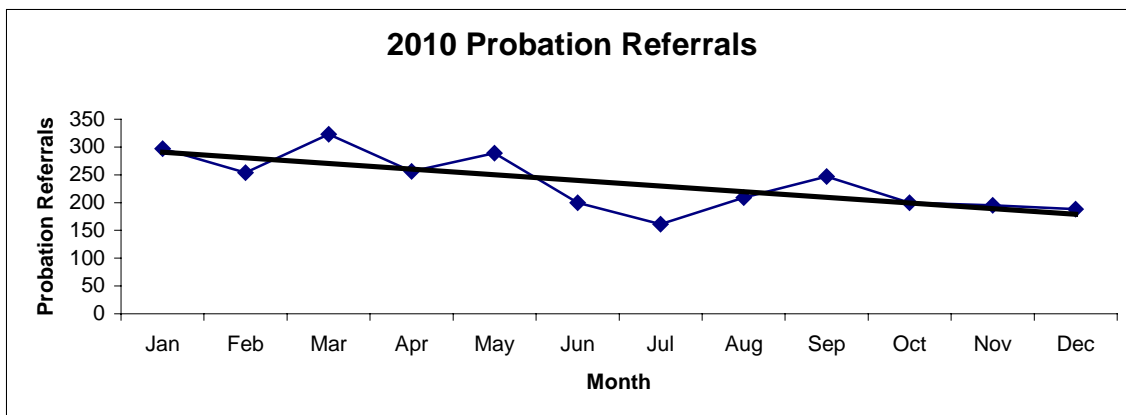
2008 Probation Referrals	Jan	Feb	Mar	Apr	May	Jun	Jul	Aug	Sep	Oct	Nov	Dec	Total
	254	213	245	261	334	224	268	239	263	302	251	265	<b>3119</b>



2009 Probation Referrals	Jan	Feb	Mar	Apr	May	Jun	Jul	Aug	Sep	Oct	Nov	Dec	Total
	267	254	321	265	310	218	240	245	209	228	193	229	<b>2979</b>

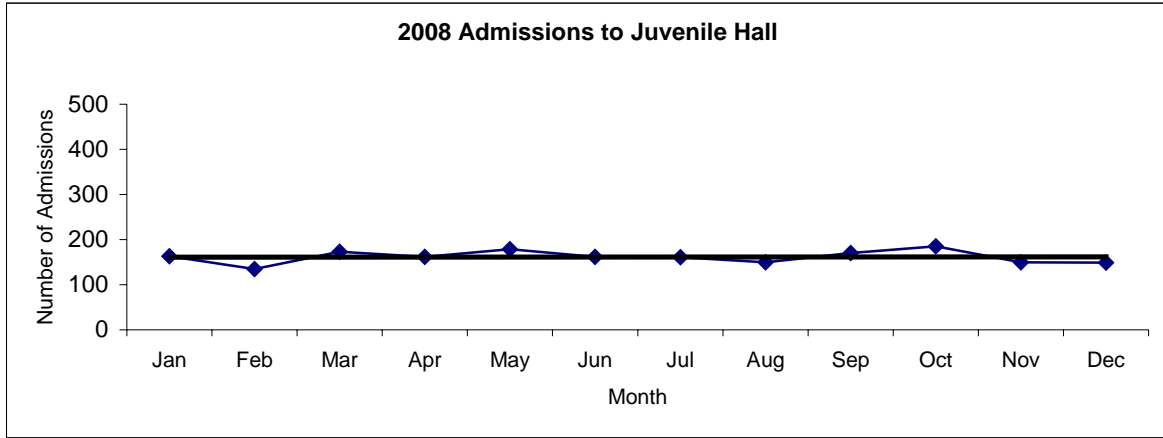


2010 Probation Referrals	Jan	Feb	Mar	Apr	May	Jun	Jul	Aug	Sep	Oct	Nov	Dec	Total
	297	254	323	256	289	200	161	209	247	200	195	188	<b>2819</b>

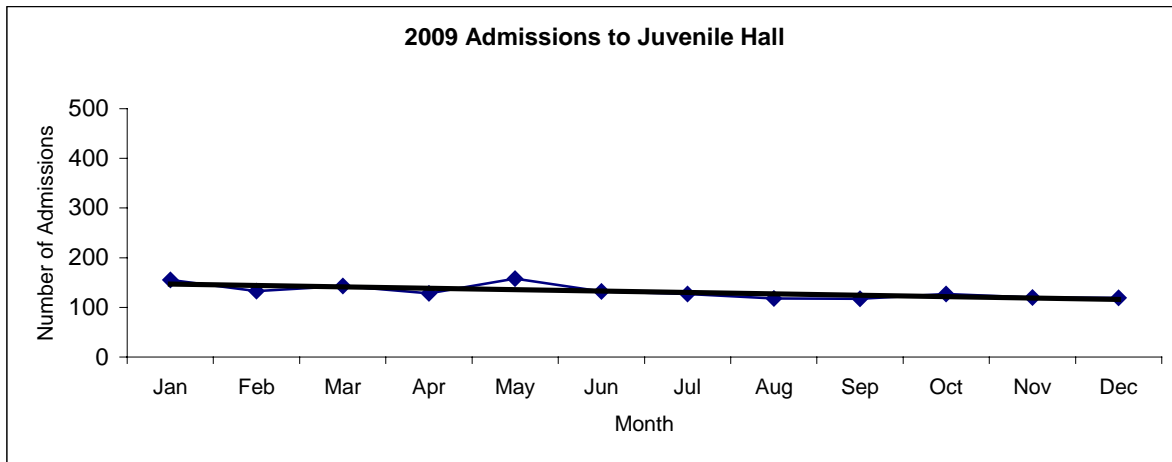


**San Francisco Juvenile Probation  
Juvenile Hall Admissions By Month  
(2008-2010)**

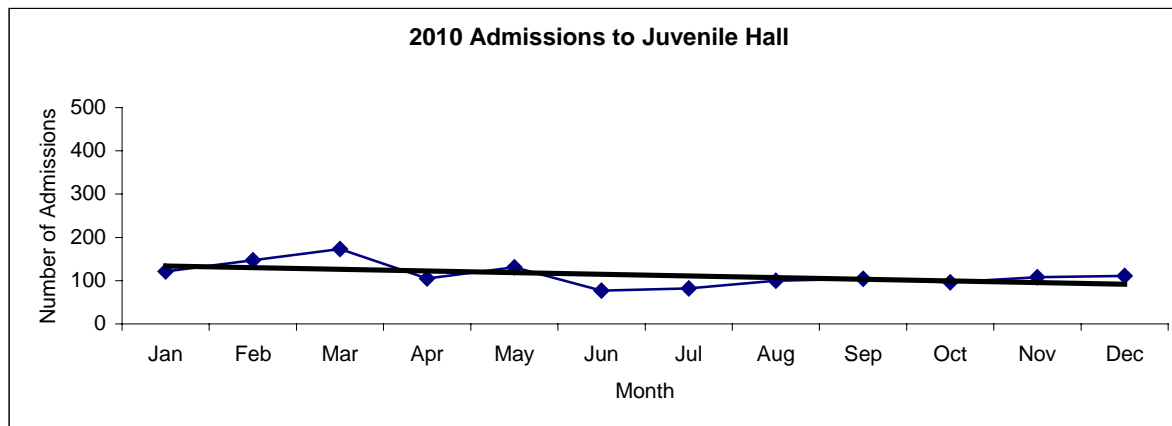
2008 Admissions	Jan	Feb	Mar	Apr	May	Jun	Jul	Aug	Sep	Oct	Nov	Dec	Total
	163	135	173	162	179	162	161	150	170	185	150	149	<b>1939</b>



2009 Admissions	Jan	Feb	Mar	Apr	May	Jun	Jul	Aug	Sep	Oct	Nov	Dec	Total
	155	133	143	128	158	132	127	118	117	127	120	119	<b>1577</b>

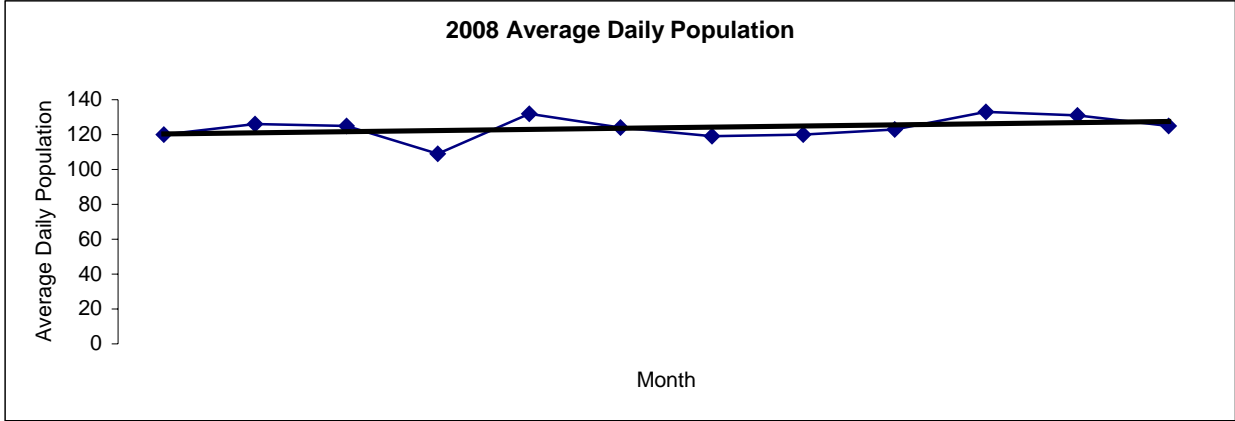


2010 Admissions	Jan	Feb	Mar	Apr	May	Jun	Jul	Aug	Sep	Oct	Nov	Dec	Total
	121	147	173	105	131	77	82	100	104	96	108	111	<b>1355</b>

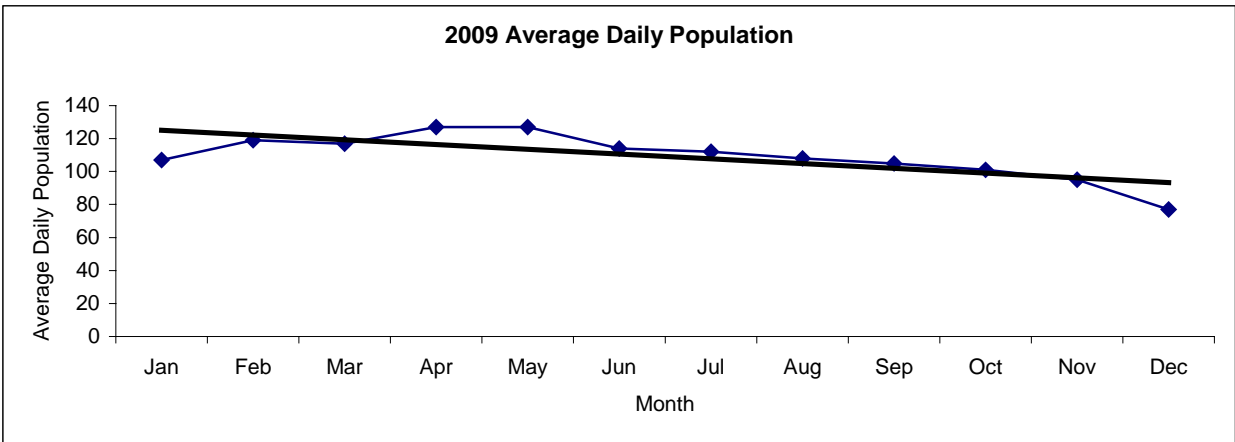


San Francisco Juvenile Probation  
**Juvenile Hall Average Daily Population By Month**  
 (2008-2010)

2008 Avg. Daily Pop.	Jan	Feb	Mar	Apr	May	Jun	Jul	Aug	Sep	Oct	Nov	Dec	Total
	120	126	125	109	132	124	119	120	123	133	131	125	<b>124</b>



2009 Avg. Daily Pop.	Jan	Feb	Mar	Apr	May	Jun	Jul	Aug	Sep	Oct	Nov	Dec	Total
	107	119	117	127	127	114	112	108	105	101	95	77	<b>109</b>



2010 Avg. Daily Pop.	Jan	Feb	Mar	Apr	May	Jun	Jul	Aug	Sep	Oct	Nov	Dec	Total
	85	104	110	107	99	97	90	88	90	84	79	92	<b>94</b>

